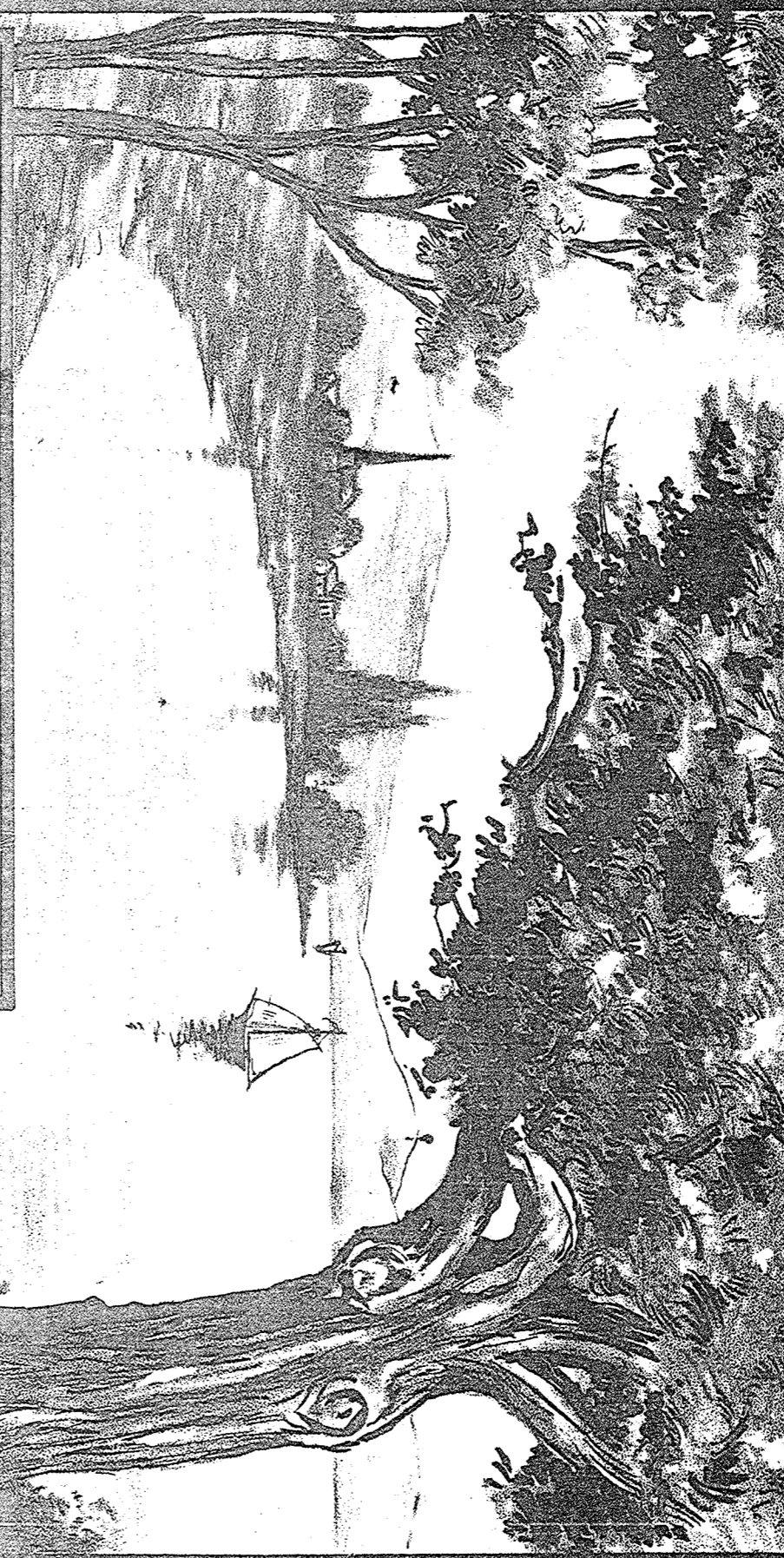


Sam & Annie Tany

POPULAR EDITION

MY ROSALIE SWEET ROSALIE

SENSATIONAL SONG



WORDS AND MUSIC BY
EDWARD G. ALLANSON

Published by
Allanson Pub. Co.
1400 AUDITORIUM BLDG.
CHICAGO, ILL.



Successfully Featured by
THE HARVARD QUINTETTE
14 WEEKS IN CHICAGO

U.S. PAT. N.

Dedicated to the Harvard Quintette.

"MY ROSALIE, SWEET ROSALIE"

REVISED EDITION

Words and Music by
EDWARD G. ALLANSON

Moderato

The first system of the piano accompaniment features a treble and bass clef. The treble clef part begins with a series of chords and eighth notes, marked with a forte 'f' dynamic. The bass clef part provides a steady accompaniment with eighth notes and chords. The key signature has one flat (B-flat), and the time signature is 2/4.

Voice

The sweet sur-prise, In your dear
The day is gone, And ere the

The second system of the piano accompaniment continues the melody from the first system. It includes dynamic markings such as 'p' (piano) and 'f' (forte), and features several accents marked with a triangle symbol. The accompaniment consists of chords and rhythmic patterns in both hands.

eyes, when first I met you, Where the sham-rock grows so green to day be
dawn, I'll sail to meet you, Where the o - cean bil - lows break a - round the

The third system of the piano accompaniment continues the piece. It features a variety of chordal textures and rhythmic accompaniment, including some longer note values and rests. The overall mood is consistent with the 'Moderato' tempo.

neath the skies of blue, You are the fair est one I
one I love so true, I know that you will wait in

The fourth system of the piano accompaniment concludes the piece. It features a final cadence with sustained chords in both hands, providing a sense of closure to the musical phrase.

All Rights Reserved.

Copyright MCMXXVII by Edward G. Allanson.

International Copyright Secured.

know in all the world to me; To - night my heart goes out to you far
 pa - tience there for me each day; And all my heart goes out with love to

off a - cross the sea. To the green hills and the cot - tage by the
 you so far a - way. Oh I long to hear your voice to break the

sea; Where we used to love to wait and watch the
 spell; Just the mu - sic of the voice I love so

tide. It was just a bit of heav - en there for
 dear. Oh I long to see the face I love so

me, well, To And lin - ger in the twi - light by your side. know dear heart that you are ev - er near.

CHORUS

p-f My Ro - sa - lie, Sweet Ro - sa - lie, I'm com - ing

back dear - heart to you, I long to be, a - gain with

thee, And hear your voice so dear and true. Be - side the

stream,..... with you my dream,..... And by the

deep blue sound - ing sea, Each day my

heart, is yearn - ing, With the light of love still burn - ing, For.....

you my Ro - sa - lie..... My Ro - sa - lie.....

My Rosalie 4

Rayner Dalheim & Co.
Music Print Chicago

My Rosalie Sweet Rosalie

MIXED Quartette

Soprano
Alto

My Ro - sa - lie, Sweet Ro - sa - lie, Sweet Ro - sa - lie, I'm com - ing

Tenor
Bass

My Ro - sa - lie, I'm

back dear heart to you, I long to be, A gain with

you, dear heart to you, I long to be

thee, And hear your voice, And hear your voice, So dear and true, So dear and true, Be side the

thee, And hear your voice, So true, So dear and true,

stream, With you my dream, And by the deep blue sound - ing

Be - side the stream With you my dream, With you my dream, by the

sea, blue sound - ing sea, Each day my heart is yearn - ing, With the

Each day my heart is

light of love still burn - ing, For

Yearn of love still burn - ing, For you my Ro - sa - lie

yearn - ing, For