

VARUN PANDIT
SOPHOMORE



SEBASTIEN VIDAL
SOPHOMORE

INDIVIDUAL GROWTH



TEAM GOALS



BEN WIRTH
SOPHOMORE



PETER DAUB
HEAD COACH

TABLE OF CONTENTS/QUICK FACTS



TABLE OF CONTENTS

2008 SEASON INFORMATION

Table of Contents/Quick Facts	2
This is Tribe Tennis	3
McCormack-Nagelsen Tennis Center	4
Busch Tennis Courts	5
Season Preview	6
2008-09 Roster	7
Head Coach Peter Daub	8
Where are They Now?	9
Players in the Pros	10
Associate Head Coach Marcos Asse	11
Keziel Juneau	12
Dominic Pagon	13
Varun Pandit	14
Marwan Ramadan	15
Sebastien Vidal	16
Richard Wardell	17
Ben Wirth	18
Newcomer Biographies	19

2008 SEASON REVIEW

2008 Season Review	21
--------------------------	----

RECORD BOOK AND HISTORY

Records	22
Honors and Awards	23
NCAA Championships	24
Year-by-Year Results	25

THE COLLEGE OF WILLIAM AND MARY

Tribe Athletics	28
The College	30
W&M Administration	32
Athletics Administration	33
Facilities	34
Mark McCormack Tribute	36

CREDITS

The 2008-09 William and Mary Men's Tennis Media Guide is a publication of the William and Mary sports information office. Layout, design and writing by associate sports information director Kris Sears. Editing by the sports information office. Photography by Jim Agnew, Julia Martin, Pete Clawson, Bob Keroack and Kris Sears. Printing by Colonial Printing of Richmond, Va.

ON THE COVER

The 2008-09 team photo appears on the front cover, while seniors Dominic Pagon and Marwan Ramadan appear on the back cover. Cover designed by William and Mary Sports Information.

WILLIAM AND MARY

Location: Williamsburg, Virginia
 Founded: 1693
 Enrollment (Includes Graduate): 7,625
 Nickname: Tribe
 Colors: Green, Gold and Silver
 Conference: Colonial Athletic Association
 President: W. Taylor Reveley III (Princeton, 1965)
 Chancellor: Sandra Day O'Connor (Stanford, 1950)
 Director of Athletics: Terry Driscoll (Boston College, 1969)
 Outdoor Facility: Busch Tennis Courts
 Indoor Facility: McCormack-Nagelsen Tennis Center
 Athletics Department Phone: (757) 221-3400
 Mailing Address: PO Box 399, Williamsburg, VA 23187
 Street Address: 751 Ukrop Way, Williamsburg, VA 23185

SPORTS INFORMATION

Asst. AD, Media Relations: Pete Clawson (Pittsburgh, 1990)
 Assoc. Director/MTN Contact: Kris Sears (Indiana, 2004)
 Office Phone: (757) 221-3368
 Cell Phone: (765) 860-1205
 E-Mail Address: kasear@wm.edu
 Associate Director: Rob Turner (Tennessee, 2003)
 Associate Director: Jacob Skipper (William and Mary, 2005)
 Intern: Scott Burns (Marian College, 2007)
 Phone: (757) 221-3344
 Fax: (757) 221-3412
 Web Site: www.TribeAthletics.com

COACHING STAFF

Head Coach: Peter Daub (Findlay, 1970)
 W&M Record: 222-181 (.551) (15 seasons)
 Career Record: 433-304 (.588) (23 seasons)
 Office Phone: (757) 221-3383
 E-Mail Address: pbdaub@wm.edu
 Associate Head Coach: Marcos Asse (Florida, 2001)
 Office Phone: (757) 221-7375
 E-Mail Address: maasse@wm.edu

TEAM INFORMATION

2008 Record: 16-12 (.571)
 2008 CAA Record: 4-1 (.800)
 Final ITA National Ranking: 67
 Postseason: CAA Finalists
 Players Returning/Lost: 9/2
 Starters Returning/Lost: 5/2
 NCAA Championships: Two (1947, 1948)
 NCAA Tournament Appearances: 10 (1946, 1947, 1948, 1949, 1950, 1951, 1973, 1999, 2005, 2007)
 CAA Championships: Three (1987, 1990, 2005)

THIS IS TRIBE TENNIS

CHAMPIONSHIP-CALIBER PROGRAM

Over the last several seasons, the William and Mary men's tennis program has enjoyed a large amount of success. In 2005, the Tribe won its third CAA crown.

During the fall of 2006, Colin O'Brien and Alex Cojanu won the ITA Mideast Region Doubles Championship. The College went on to enjoy one of the best seasons in school history during the 2007 spring season. The Tribe earned its highest ITA Ranking in school history at No. 31 and garnered an at-large spot in the 2007 NCAA Tournament.

Following its at-large berth in the NCAA Tournament in 2007, the Tribe has participated in the post-season 10 times in school history.

The 2008 campaign saw the Tribe defeat No. 34-ranked Notre Dame for the first time in 30 years and advance to the CAA Championship match for the sixth time since 1999. The College also posted its second straight 16-win dual match season. Alex Cojanu became the first Tribe player to be named the AEF Tribe Club Male Senior Athlete of the Year for the College.

Each of the last two years, the Tribe has sent players to the NCAA Individual Championships. In 2007, Alex Cojanu and Colin O'Brien advanced to the second round of the doubles championship. A year later, W&M sent a singles player and a doubles team to the championships for the first time in over 60 years. Cojanu competed in the singles championship, while both he and Juneau played in the doubles event.

TRIBE OFF THE COURT

• During their careers, W&M men's tennis players travel extensively throughout the country for individual tournaments and team matches.

• In 2008-09, the Tribe will have trips to Athens, Georgia; La Jolla, California; Malibu, California; and Montgomery, Alabama.

• In just the past four years, the Tribe has had extended stays in Hawaii, the Boston area, Florida, California, Tennessee, Kentucky, Texas and Idaho.

• In the spring of 2004, W&M spent nearly a week in sunny Hawaii and California, followed by three days in the snow-capped mountains of Idaho.

FRIENDS OF WILLIAM & MARY TENNIS

The primary purpose of "Friends of William and Mary Men's tennis" is to raise funds to support the men's tennis program. Be a part of the Tribe's success!

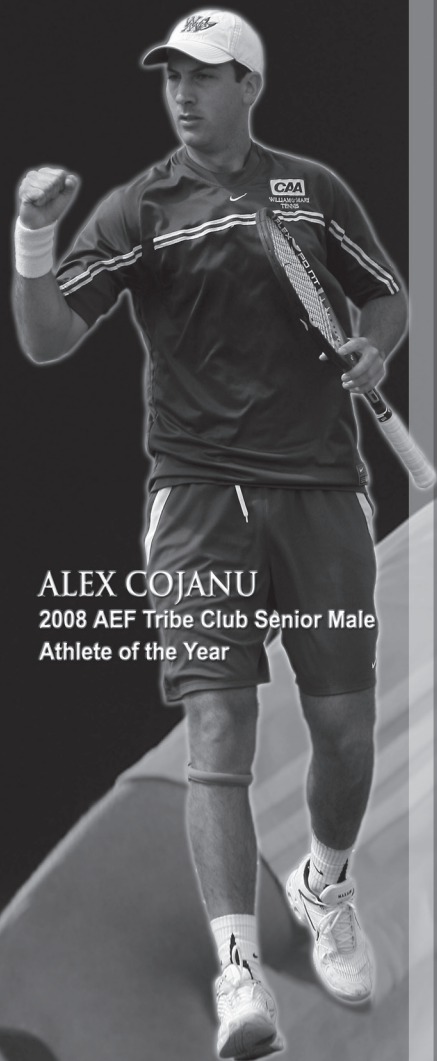
"The Friends of William & Mary Tennis have enabled us to reach standards, and achieve a travel schedule that has put us into position to compete at the national level," head coach Peter Daub said. "Through the generous support of many parents, alumni, and Williamsburg supporters, we are able to give these student-athletes an experience that they will cherish for a lifetime, through our travel and different cultures we'll visit."

For more information about how you can help support the W&M men's tennis team, please contact William and Mary's head mens' tennis coach Peter Daub by phone at (757) 221-3383 or by e-mail at pbdaub@wm.edu.

TRIBE TENNIS IN BOISE, IDAHO



TRIBE TENNIS IN HAWAII



ALEX COJANU
2008 AEF Tribe Club Senior Male
Athlete of the Year



MCCORMACK-NAGELSEN TENNIS CENTER



Dedicated to excellence in academics and athletics, the College of William and Mary in historic Colonial Williamsburg is proud to offer one of the finest athletic facilities in the country—the McCormack-Nagelsen Tennis Center. Located on South Henry Street adjacent to the graduate housing complex, the McCormack-Nagelsen Tennis Center, which opened in 1995, boasts impeccable tennis facilities and houses the Intercollegiate Tennis Association’s Women’s Tennis Hall of Fame. Recently, the courts at the Tennis Center were resurfaced during the summer of 2007.

The facility was made possible through a generous gift from Mark H. McCormack, a 1951 graduate of William and Mary, and his wife, former world-class tennis professional Betsy Nagelsen. As the former chairman, president and chief executive officer of International Management Group, McCormack was widely recognized as the founder of the sports marketing industry.

The McCormack-Nagelsen Tennis Center features six indoor tennis courts using the GreenSet GrandPrix Surface (rubberized base under color coat), air conditioning and indirect lighting at a competitive level. The facility also includes member and team locker rooms, several spacious lobbies and spectator viewing that boasts 362 stadium seats as well as a mezzanine seating area. In addition, the ITA and Rolex generously donated a state-of-the-art electronic scoreboard.

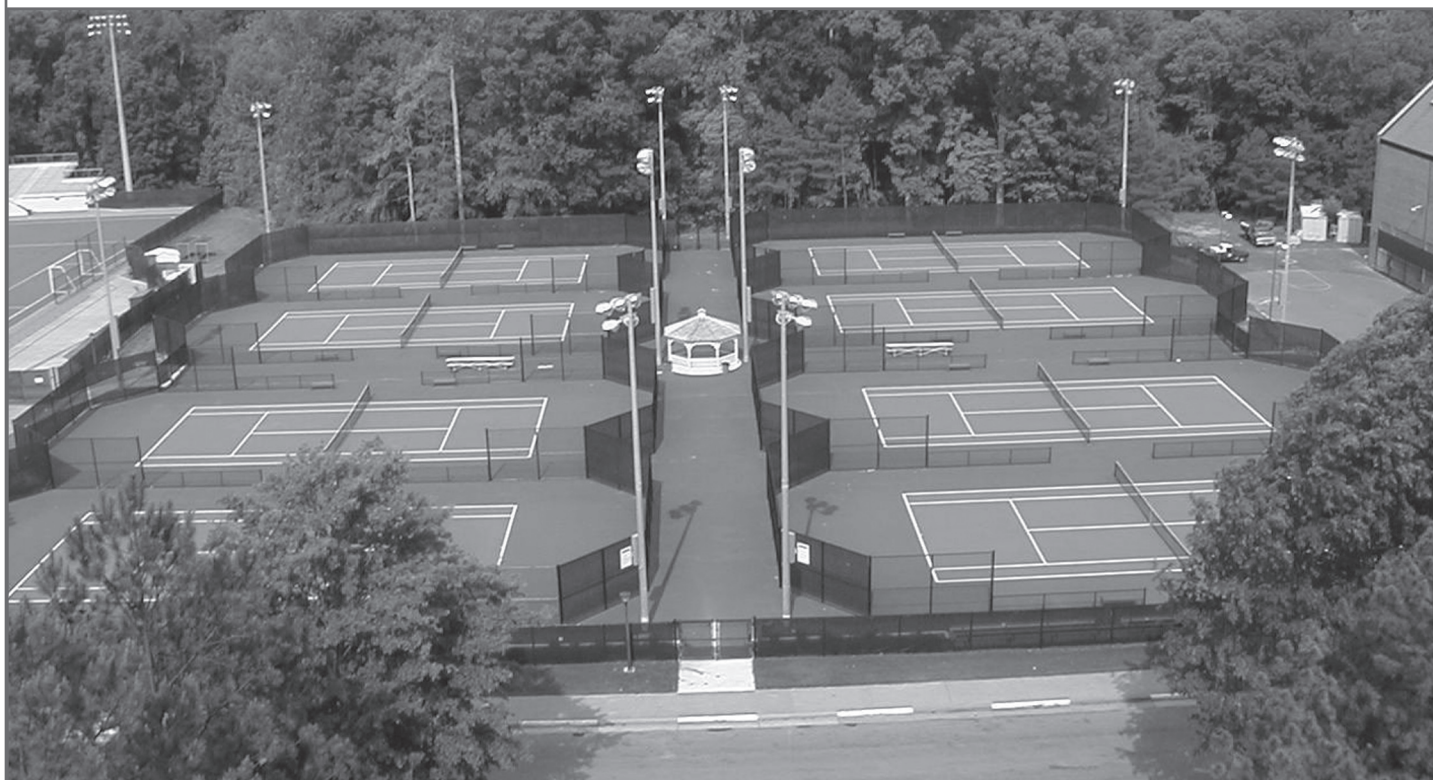
The Intercollegiate Tennis Association’s Women’s Tennis Hall of Fame contains a collection of artifacts and records pertaining to collegiate women’s tennis, and enshrines former players, coaches and contributors that have impacted the sport. The Hall of Fame also functions as a library, archive and research center for intercollegiate women’s tennis.

DIRECTIONS TO BUSCH COURTS

From All Directions: Take I-64 to Exit 242A (Route 199 West). At second stoplight turn right on South Henry Street (Route 132 North). After passing the cemetery, turn right into the first driveway. Follow the street around to the right.



BUSCH TENNIS COURTS



One of the newest athletics venues at the College of William and Mary, the Busch Courts tennis complex opened in September of 2001. It is the outdoor home of the Tribe tennis squads.

The complex features eight individual hard court surfaces. Each court features California Corners, a unique design that includes quarter fences that run along the sidelines to allow for uninterrupted play.

There is stadium seating for approximately 500 people at Busch Courts, and there is also a state-of-the-art lighting system to accommodate night matches.

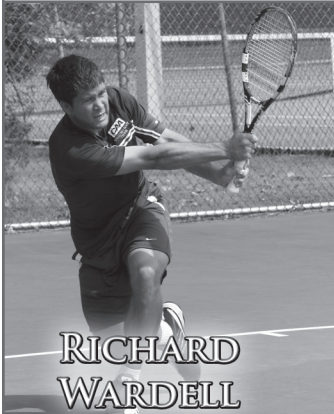
The facility received an upgrade in 2007. During the summer months, the courts at the complex were resurfaced along with the courts at the McCormack-Nagelsen Tennis Center.

DIRECTIONS TO BUSCH COURTS

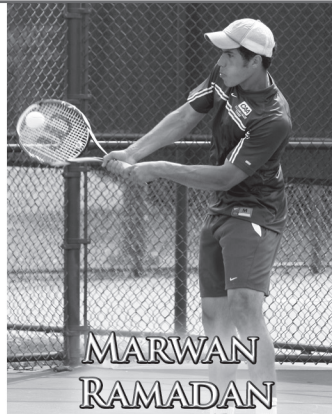
From the North/West: Take I-64 East to Lightfoot Exit 234 (Route 199 East). At top of exit ramp, take a right onto Route 199 East. Stay on 199 East until Monticello Avenue exit. Exit at Monticello Avenue, and bear left on exit ramp. At bottom of ramp, turn left at light onto Monticello (pass under 199). Go straight through first stoplight (at Ironbound Road). After the light, continue straight for about half a mile and take the first right onto Compton Drive (before light at hospital and shopping centers) There may not be a street sign! The road is heavily wooded on both sides. Continue on Compton Drive and turn right at the first stop sign onto Brooks Road. Busch Courts will be on your right.

From the South/East: Take I-64 West to Exit 242A (Route 199 West). Follow 199 to fourth light. At the fourth light, take a right onto Jamestown Road. Follow Jamestown Road 1.1 miles (past Lake Matoaka on left), then take a left onto Ukrop Drive. Take a left at the next stop sign and continue to follow Ukrop Drive while bearing right until you reach William and Mary Hall up the hill on your left. Busch Courts are behind the Hall.





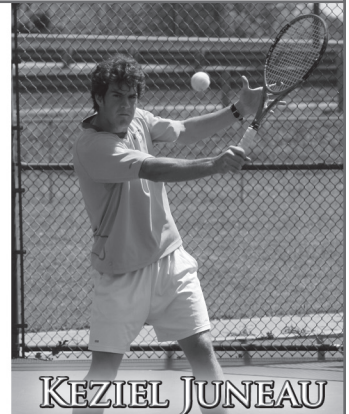
**RICHARD
WARDELL**



**MARWAN
RAMADAN**



DOMINIC PAGON



KEZIEL JUNEAU

EARN "IT" EVERYDAY

Individual Growth and Team Goals

After advancing to the CAA Championship match for the sixth time in nine years last season and winning 16 dual matches for the second straight year, the Tribe men's tennis program is poised to continue on the winning path and further cement itself as a contender on both the conference and national scenes. W&M enters the 2008-09 season with a simple slogan to develop and enhance a talented youthful roster. The Tribe's mantra is, "Earn 'IT' Everyday: Individual Growth and Team Goals." The I standing for Individual Growth as the College strives to individually develop the talent of its players, while the T stands for Team Goals as it tries to combine those individual talents in the hope of reaching its team goals. Quite simply, the Tribe wants to remain in the CAA title hunt and earn another trip to the NCAA Tournament.

The milestones for the W&M program recently have been plentiful. In 2007, the Green and Gold reached its highest point in the in the ITA National Rankings at No. 31 and also earned an at-large bid to the NCAA Tournament. A year later, head coach Peter Daub continued to develop the national reputation of the W&M program as the College notched its second-straight 16-win season. The Tribe also took a huge step on an individual level as W&M advanced both a singles player and a doubles team in the NCAA Individual Championships for the first time in over 60 years. Alex Cojanu (2008 graduate) competed in the NCAA Singles Championship, while playing alongside junior Keziel Juneau in the doubles championship. Cojanu went on to become the first W&M men's tennis player to be named the AEF Tribe Club Senior Male Athlete of the Year. In dual-match competition, the Tribe recorded its first win over then-No. 34 Notre Dame in 30 years.

Leading the way for the Tribe in 2009 will be its senior duo of Marwan Ramadan and Dominic Pagon. The pair combined for over 40 singles wins last season, while playing at the top of the lineup. Ramadan won a team-best 22 matches and played as high as No. 2 in the singles lineup.

After missing the majority of his first two seasons with injury, Pagon became a fixture

at the top of the lineup as a junior. He finished with 19 singles wins, which equaled the total he amassed in his first two injury-plagued years. He notched an impressive win over the No. 91-ranked player from Wake Forest. Pagon also came through in the clutch against Notre Dame, winning the clinching match at the No. 3 slot.

The junior class of Juneau and Richard Wardell has made its presence felt. Juneau garnered a significant amount of experience on the national scene last season, playing in both the All-American Championships and the NCAA Doubles Championship. During the dual match campaign, Juneau showed his ability to compete with the best in the country, knocking off the highest ranked opponent of his career. He defeated the No. 45-ranked player from Rice during the teams' dual match contest. Juneau won his final three matches of the season to finish with 16 singles wins. He was ranked No. 124 nationally in the ITA preseason singles rankings.

Wardell is a fiery competitor who has impressive strength in his 5-9 frame. After struggling a bit during the 2007 fall while making a change to his game, the Fort Myers, Fla., native tallied nine of his 12 wins on the year during the dual-match season. He also was in the Tribe singles lineup during both the CAA semifinal and championship matches.

The makeup of the Green and Gold roster includes a large contingent of talented underclassmen. Five sophomores, including two transfers, are the nucleus of the underclassmen lineup. Both Jacob Braig and William Lang join the Tribe as transfers from Christopher Newport and Tennessee, respectively. Braig was an ITA Scholar-Athlete selection at Christopher Newport during his rookie season, while helping CNU to the NCAA Division III Tournament. Lang comes to W&M from Tennessee after earning five-star credentials from the Tennis Recruiting Network prior to entering the college game. In limited action with the Volunteers, Lang turned in a six singles wins and seven doubles victories during his rookie season.

Sophomores Sebastien Vidal, Ben Wirth and Varun Pandit return for their second sea-

sons. Vidal possesses a very mature game for his youthful age. He quickly became a permanent part of the Tribe rotation, and as the season wore on, he became more confident to the point where he provided valuable wins. Vidal capped his impressive rookie season by coming back to clinch W&M's CAA semifinal win over Old Dominion.

Wirth and Pandit spent the majority of their first seasons refining their untapped talents. Wirth showed the ability to develop into a solid part of the lineup by winning his second collegiate tournament after advancing to the finals in his first. He won his flight of the Virginia State Open after earning a berth in the finals of the Brown bracket of the Virginia Invite. After getting off to a slow start, Pandit went on to win his final four matches of the dual-match season.

The Green and Gold also add a pair of true freshmen in Daniel Mihalov and Ilja Orre. Mihalov was rated the 12th-best player in the state of Illinois by the Tennis Recruiting Network and was a two-time Illinois State Championships qualifier. Orre comes to the Tribe from Helsinki, Finland, where he advanced to the third round of the European Junior Individual Championships in 2006.

As is the norm with Daub-coached teams, the Tribe will have a slew of options in the doubles lineup, providing for a deep tandem's rotation. W&M lives by the pairs' motto of "Wild and Crazy Doubles." Vidal, Pagon and Juneau all earned All-CAA honors in doubles last season with Pagon and Juneau earning first-team accolades. Pagon and Juneau were also VaSID all-state honorees. Vidal turned in an exceptional rookie season in doubles, winning 28 matches. The total ranked as the second-most ever for a W&M rookie and his 77.8 winning percentage in doubles was the third best. Vidal and Juneau were ranked No. 38 in the ITA Preseason doubles rankings. Pagon ended last year with 18 doubles wins and capped the season playing at the No. 1 doubles slot. Wardell also has the ability to play high in the doubles lineup and earlier this fall advanced to the quarterfinals of the ITA Mideast Regional along with Vidal.

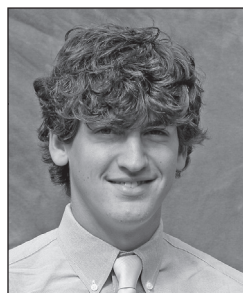
2008-09 ROSTER



JACOB BRAIG
Sophomore • 6-3 • 175
Williamsburg, Va.
Jamestown



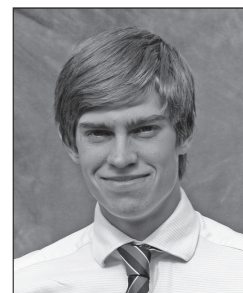
KEZIEL JUNEAU
Junior • 6-2 • 185
Repentigny, Quebec
De Mortagne



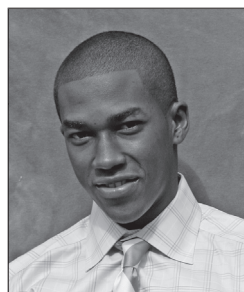
WILLIAM LANG
Sophomore • 6-1 • 170
Memphis, Tenn
Memphis University School



DANIEL MIHALOV
Freshman • 6-1 • 155
Bannockburn, Ill.
Deerfield



ILJA ORRE
Freshman • 6-0 • 150
Helinski, Finland
Ressu



DOMINIC PAGON
Senior • 5-9 • 155
Kingston, Jamaica
Saddlebrook Prep



VARUN PANDIT
Sophomore • 6-1 • 165
Katy, Texas
James E. Taylor



MARWAN RAMADAN
Senior • 6-2 • 170
Alexandria, Va.
Academy for IGCSE



SEBASTIEN VIDAL
Sophomore • 5-11 • 140
Guatemala
Lycee Jules Verne



RICHARD WARDELL
Junior • 5-9 • 170
Fort Myers, Fla.
Fort Myers



BEN WIRTH
Sophomore • 6-2 • 180
Virginia Beach, Va.
Ocean Lakes



MARCOS ASSE
Associate Head Coach
Fifth Season at W&M



PETER DAUB
Head Coach
16th Season at W&M

ROSTER BREAKDOWN

BY YEAR

Seniors (2): Dominic Pagon; Marwan Ramadan
Juniors (2): Keziel Juneau, Richard Wardell
Sophomore (5): Jacob Braig, William Lang, Varun Pandit, Sebastien Vidal, Ben Wirth
Freshmen (2): Daniel Mihalov, Ilja Orre

PRONUNCIATION GUIDE

Keziel Juneau	Kez-eel June-o
Daniel Mihalov	Mi-Hall-ov
Ilja Orre	Ill-ya Or-ee
Sebastien Vidal	Vee-doll



PETER DAUB

Head Coach
15th Season at W&M
23rd Season Overall
Findlay College (1970)

AT W&M

- Led W&M to its highest ITA National Ranking in school history at No. 31 in 2007
- Guided the Tribe to eight seasons of 15-plus victories, including 16 in 2007 and 2008
- W&M advanced to its third NCAA Tournament under Daub in 2007
- Two-time Colonial Athletic Association Coach of the Year (1999, 2001)
- Career coaching record stands at 433-304 (men's and women's combined)
- One of eight head coaches in the history of W&M Athletics to register over 200 victories at the institution.
- Won 200th career match with a 7-0 sweep of George Washington (3/9/07)
- Claimed his 400th career win with a 4-3 win over Georgia State (4/9/07)
- Guided Tribe to the 2005 CAA Championship
- 2005 USTA/Virginia College Coach of the Year
- 2006 USTPA Mid-Atlantic College Coach of the Year
- In 2004, W&M upset Tennessee on the road, 4-3, in its first win over a top-10 SEC team in more than 30 years. W&M also stunned VCU, handing the seventh-ranked Rams its first loss ever in CAA play, as W&M earned another win over a top-10 foe.
- Daub-coached players have earned 47 All-CAA honors (26 singles/21 doubles).
- Coached a singles player to the NCAA Championships and a doubles team to the NCAA Championships on three occasions each
- Saw both a singles player and a doubles team compete at the NCAA Championships in 2008, marking the first time it occurred at the W&M in over 60 years
- Saw Jeff Kader (singles) in 2003 and Alex Cojanu and Colin O'Brien (doubles) in 2006 become the first W&M players to compete in the ITA National Indoor Championships
- Coached a CAA Player of the Year, two CAA Rookies of the Year, an ITA Mideast Region Doubles Championship team and a CAA Tournament MVP
- Slogan of "Wild and Crazy Doubles" revolves around constant movement and motion in a very aggressive, structured atmosphere
- Mid-Atlantic Boys 18's Section Head Coach at the 2008 National Team Championships

COLLEGE COACHING PRIOR TO W&M

- As Georgia's assistant coach, helped the Bulldogs achieve No. 4 and No. 2 national rankings and compete in the NCAA finals in 1993
- In 1995, coached the United States to a gold medal at the World University Games in Japan
- Coached at Redlands College for two seasons
- The men's head coach at Temple from 1982 through 1989, he also led the women's team from 1985 to 1989
- His players at Temple on the combined teams won the "Highest Student-Athlete GPA Award" for averaging over a 3.0 GPA for eight semesters.

PROFESSIONAL COACHING PRIOR TO W&M

- Coached professionals at Wimbledon, Australian Open and U.S. Open
- Coached a pair of doubles teams to the round of 16 at Wimbledon
- A featured speaker at various events, including the USTA and USPTA national conventions and the ITA Coaches Convention
- At the 1997 and 2000 U.S. Opens, gave clinics at the USTA Tennis Teachers Conference
- Served as the coach of the Mid-Atlantic section at the Junior Davis Cup

AS A PLAYER

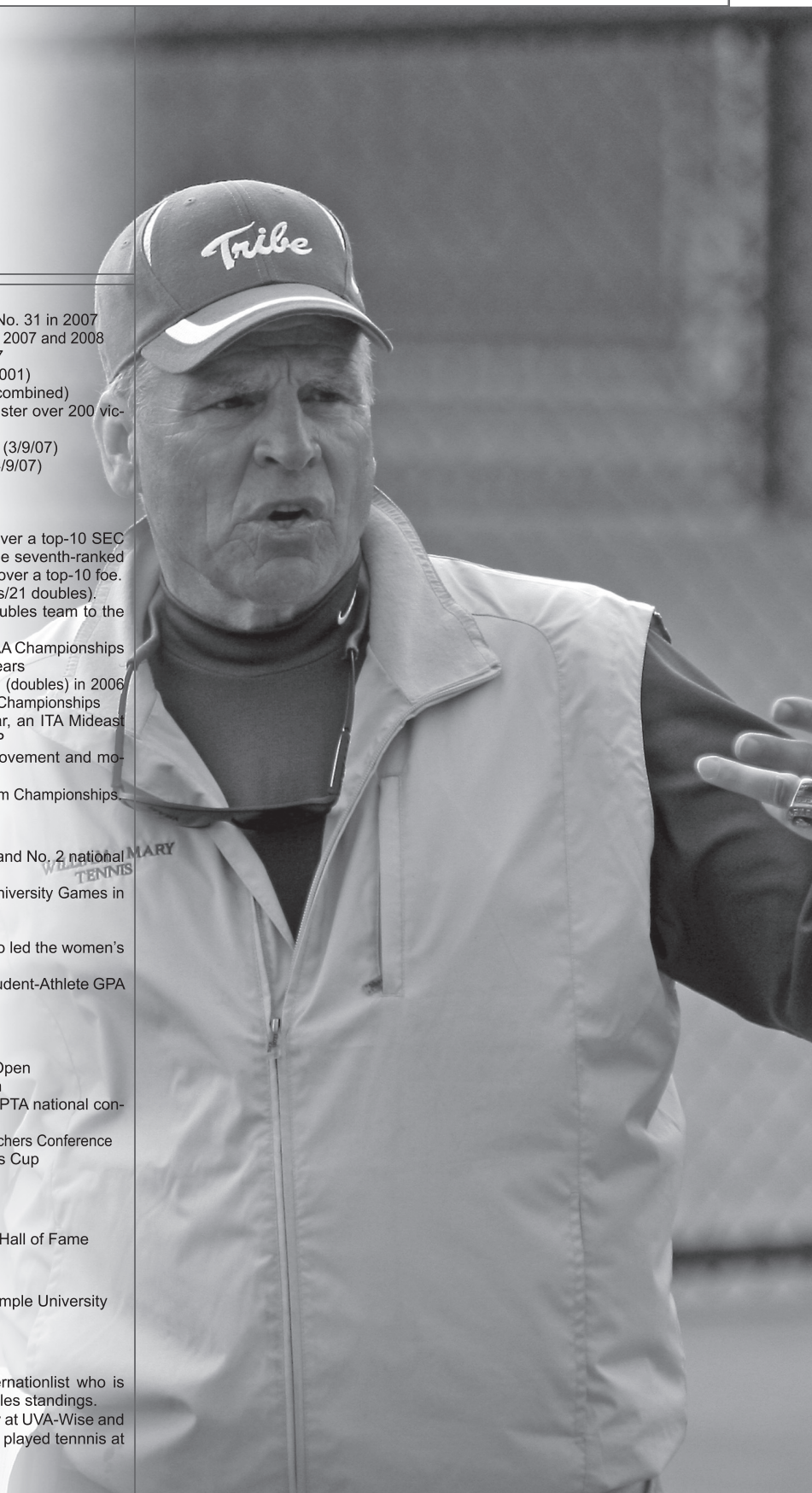
- Played professionally, winning titles in Australia and New Zealand
- First tennis player to be inducted into the Findlay College Athletic Hall of Fame

EDUCATION

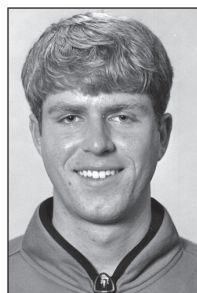
- Earned master's degree in education (sports administration) at Temple University
- A graduate of Findlay College in 1970

PERSONAL

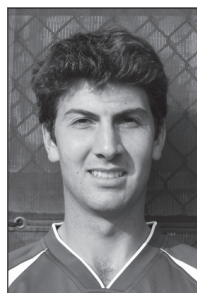
- Lives in Williamsburg with his wife Ruth, a former Scottish Internationalist who is ranked in the top five nationally in the USTA 55s singles and doubles standings.
- Has a daughter, Kate, who played volleyball and tennis collegiately at UVA-Wise and son, Doug, who won the 2000 high school state doubles title, and played tennis at VCU.



WHERE ARE THEY NOW?



PATRICK BROWN · 2001
Commercial Financial
Analyst Laureate Capitol
Morgage



ALEX COJANU · 2008
Professional Tennis
Player



TIM CSONTOS · 2000
Regional Sales
Executive Concur
Technologies, Inc.



ALEX FISH · 2005
Army Military
Intelligence



JAY GOLDSTEIN · 1995
Senior Financial Analyst
Kraft Foods
Chicago, Ill.



LEE HARANG · 1999
Attorney
Business Litigation
Tampa, Fla.



CHRISTIAN JORDAN · 1998
Lawyer
Los Angeles, Calif.



JEFF KADER · 2005
Assistant Men's
Tennis Coach
N.C. State



SEAN KELLEHER · 2005
Teaching Professional



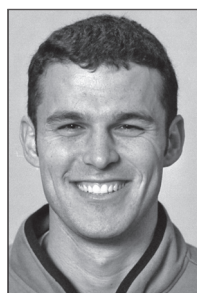
DAVID KENAS · 1999
Professional
Photographer
Mahwah, N.J.



MARTIN LARSSON · 2000
Doctor of Neuropsychiatry
at Univ. Hospital
Lund, Sweden



SCOTT LINDSEY · 1994
Project Management
Atlanta, Ga.



BRIAN LUBIN · 2001
IT Consultant, Accenture
Austin, Texas



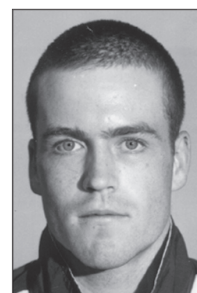
COLIN O'BRIEN · 2007
Professional Tennis
Player



KAL PATRICK · 2004
Teaching Professional



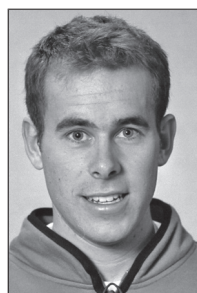
GEOFF RUSSELL · 2004
Morgage Consultant
Morgan Financial, Inc.



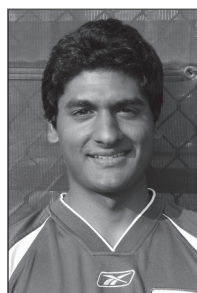
AARON SCOTT · 1997
Orthopedic Resident in
foot and ankle surgery
Durham, N.C.



ALEX SOETERS · 2000
Corporate
Management



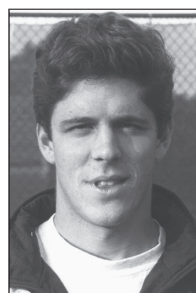
TREVOR SPRACKLIN · 2001
Teaching Professional
at Congressional
Country Club



KAVI SUD · 2008
Economic and Business
Analysis Consultant
at Booz Allen Hamilton
Washington, D.C.



STEPHEN WARD · 2006
Professional Tennis
Player



BRETT WILLIAMS · 1994
Doctor in
Ophthalmology



JOHN WINTER · 1995
Lawyer Baker,
at Boets L.L.P.,
New York, N.Y.