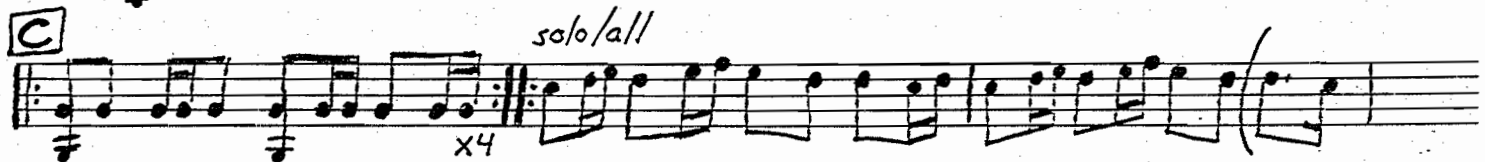
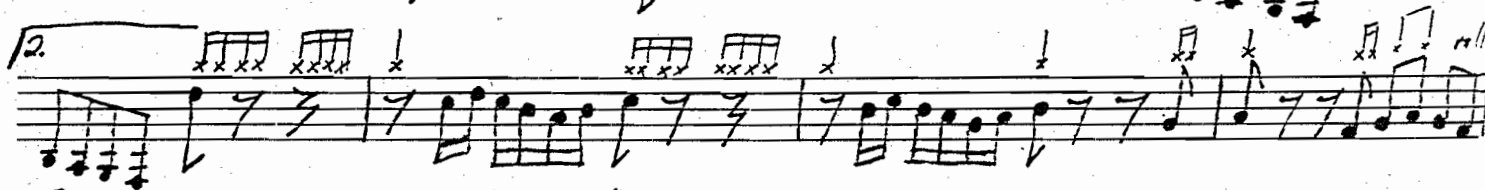
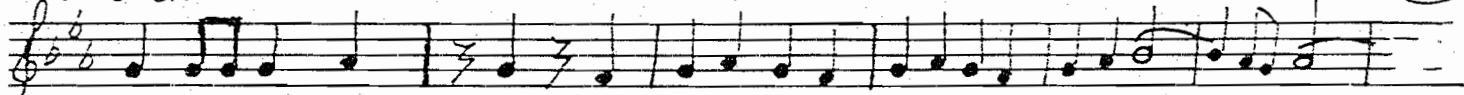


mugaddimah of Nibtidi Mineen il-Hikāya (p.1)

Kurd on G

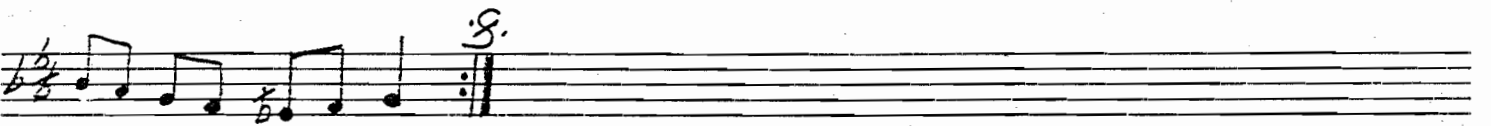


Nibtidi Mineen il-Hikaya

(p.2)



Bayyati on G ray



mugaddimah = instrumental intro.

TAPE 6 side A

composed by Muhammad Abd al-Wahhab
sung by Abd al-Halim Hafiz