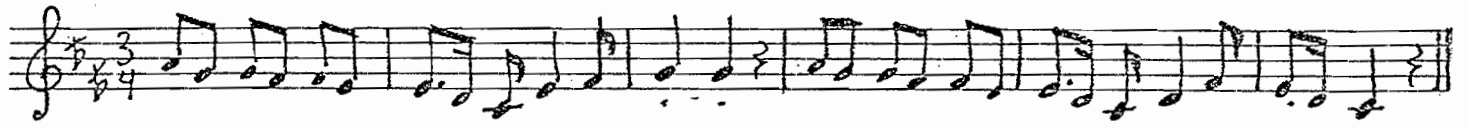
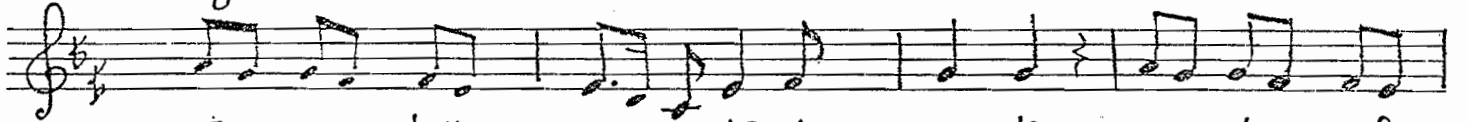


MUWASHSHAH: "Yā Man La'ibat Biki Shamūlu"



Song



yā man la'i bat bi hī sha mū-lū ma al-tafa



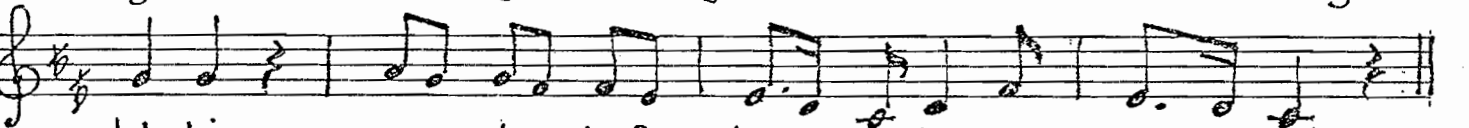
hā di hish sha mā-yil mā al-tafa hā di-hish-sha-mā-yil



yā law yala lā lawyala lā law yala lal li



(w)yala liw yala liw yala liw yā tā w yā tā w yā lawyala



lal-li mā al-tafa hā di hish-sha mā-yil



sā — yi-l.

شامول = rest