

Bayyati Ditty - Ahmed al. Hifnawi

Moderato
(accel. last time)

A

B

C Tempo Rapido

last time

Tagasim sala al Wahdah
Vln, Kay etc.

..... fade to Riga

D.C. al Coda

~~Coda~~

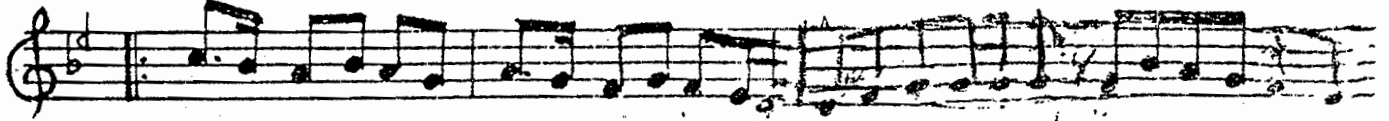
~~trill~~ trill (p)

Er. Anne Rasmussen.

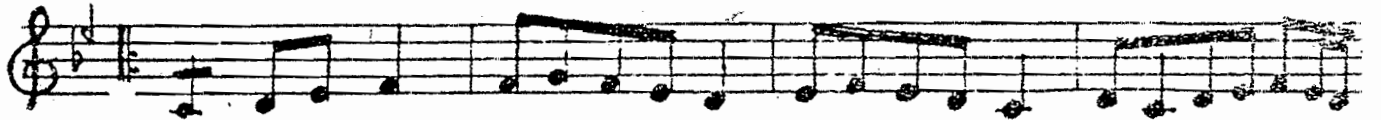
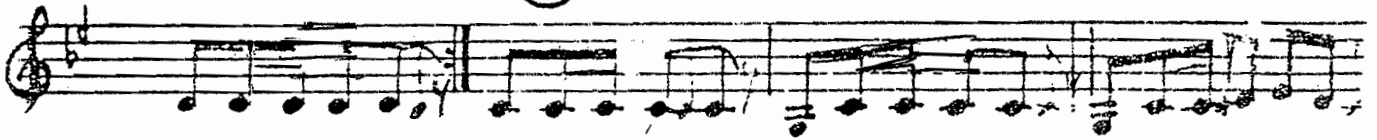
السماعي الدراج تراث قديم



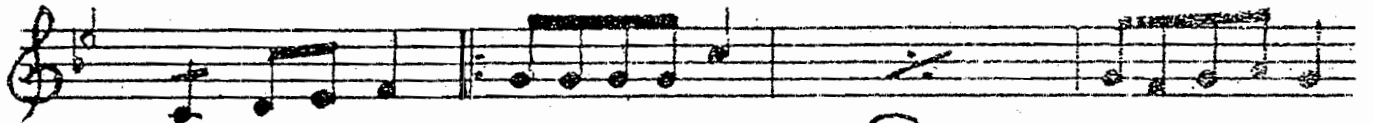
♩



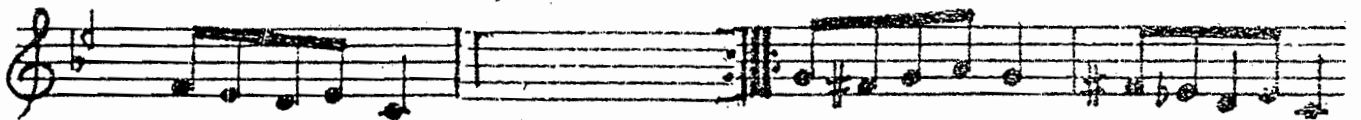
②



♩



♩ ③



♩

Sayyatu

Billadi Askara

Trad. muwanna'an
Unknown composer

A

bi-la-dhi as karamin arf il-la ma | bi-la-thi as karamin arf il-la ma kulla

wala-dhi kahhala jafnay ka bi-ma | wa-la-thi kahhala jaf hay ka bi ma saja

B

Ka' sintakta si-hi-waha bab / Kollo ki'sra takta si-hi waha bab

da sih rula day-hi-wagta rab / saja da sih rula day hi wag ta rab

C

waia thi aj-rada muli sindu ma | Ginda ma a radte minghay ri-sa

D

da'iz la shad ri ya yun na ka fa ma ~ aj da'

bab

E

ra-l ma 'a bi lit fa il-la hab

1st verse A B A B

2nd verse A B A B

C C D E E

C C D E E

Reworked after a recording

by Subh Fakhri

John Cleary / Anne Rasmussen