



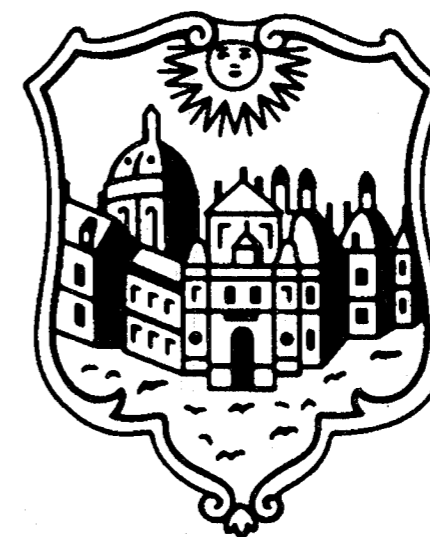
The College of William and Mary



University Databook
1997-98

1997-98

THE COLLEGE OF WILLIAM AND MARY
University Databook



PLANNING AND INSTITUTIONAL RESEARCH
THE COLLEGE OF WILLIAM AND MARY
P.O. Box 8795
WILLIAMSBURG, VIRGINIA 23187-8795



CHARTERED 1693

THE COLLEGE OF WILLIAM AND MARY IN VIRGINIA
OFFICE OF PLANNING AND INSTITUTIONAL RESEARCH

POST OFFICE BOX 8795
WILLIAMSBURG, VIRGINIA 23187-8795

TELEPHONE 757/221-2740
FAX 757/221-2749

June 30, 1998

The *University Databook* is designed to provide the most frequently requested information about the College of William and Mary, using data from a wide variety of sources.

Information in the *Databook* is presented in tabular or graphic form, and occasionally in both formats. The aim is to present the information in the clearest, most useful manner. Suggestions based on actual use of the *Databook* are welcome, although space limitations do affect the amount and depth of information presented.

The information found in the *Databook* comes from the College's computerized databases, and certain offices of the College (please note citations on the tables and graphs). The cooperation of those offices is greatly appreciated.

The information in the *Databook* can also be found on the World Wide Web at:

<http://www.wm.edu/institresearch/index.htm>

Information in the *Databook* is organized as follows: historical and organizational information; admissions to the undergraduate, graduate, and first professional schools; enrollment of students; progress of students; degrees conferred and alumni information; tuition and fees, financial aid, and housing for students; faculty and staff information; financial information; information regarding the physical plant and land holdings; and various rankings of the College among its peer institutions. Each section is shown separately in the Table of Contents.

Office of Planning and Institutional Research

Archives
LD
6051
.W492
U5
1997/98
cop. 2

46-308-11002

TABLE OF CONTENTS

Mission Statement	v
-------------------------	---

LIST OF TABLES

TABLE		PAGE
<i>History</i>		
1.	History of Earned Degrees Currently Offered	1
2.	Chancellors of the College	2
3.	Presidents of the College	3
4.	Administrative Organization, Summer 1998	4
<i>Admissions</i>		
5.	First-Time Freshman and Transfer Applications, Offers, and Accepts, Fall 1988 - Fall 1997	5
6.	First-Time Freshman Statistical Admission Criteria, Fall 1993 - Fall 1997	6
7.	First-Time Freshmen by Geographic Origin, Fall 1993 - Fall 1997	7
8.	Admissions to the Graduate and First Professional Schools, Fall 1993 - Fall 1997	8
9.	Graduate and First Professional Statistical Admission Criteria, Fall 1993 - Fall 1997	9
<i>Enrollment</i>		
10.	Fall Headcount Enrollment by School, 1988 - 1997 (Table)	10
11.	Fall Headcount Enrollment, 1988 - 1997 (Graph)	11
12.	Summer Session Headcount Enrollment by School, 1992 - 1996	12
13.	Fall Headcount Enrollment of Virginia Residents, 1993 - 1997	13
14.	Fall Headcount Enrollment by State, 1992 - 1997 (Table)	14
15.	Fall Headcount Enrollment by State, 1997 (Map)	16
16.	Fall Headcount Enrollment of Virginia Residents by City or County, 1994 - 1997	17
17.	Fall Headcount Enrollment by Ethnic Origin, 1997	20

TABLE	PAGE
18. Fall Headcount Enrollment of African American Students, 1993 - 1997	21
19. Fall Headcount Enrollment of Female Students, 1993 - 1997	22
20. Fall Headcount Enrollment by Full-Time/Part-Time Status, 1993 - 1997	23
21. Fall Headcount Enrollment of Undergraduate Students by School and Academic Level, 1993 - 1997	24
22. Fall Headcount Enrollment by Age, 1997	25
23. Fall Headcount Enrollment by Level, Full-time/Part-Time Status, and Domicile, 1997	26
24. Fall Headcount Enrollment by School, Full-time/Part-Time Status, and Domicile, 1997	27
25. Fall Headcount Enrollment by Level, Ethnic Origin, and Gender, 1997.....	28
26. Fall Headcount Enrollment by School, Ethnic Origin, and Gender, 1997	29
27. Fall Headcount Enrollment by School, Degree Level, and Major, 1993 - 1997	30
28. FTE Students by Department and Course Level, Fiscal Years 1993-94 through 1996-97	32
Academic Progress of Undergraduate Students	
29. Mean Semester Quality Point Averages of Undergraduate Students, 1993-94 through 1996-97	35
30. Graduation and Retention Rates for Undergraduate Students, Classes Entering Fall 1989 though Fall 1996	36
31. Dean's List of Distinguished Students in the Undergraduate Schools	37
32. Undergraduate Academic Suspensions	38
Degrees	
33. Approved Degree Programs, 1997-98	39
34. Distributions of Degrees Conferred by School, Degree Level, and Major, 1992-93 through 1996-97 (Table)	40
35. Degrees Conferred by Level, 1992-93 through 1996-97 (Chart)	42
Alumni	
36. Distribution of Alumni by Current State of Residence, Fall 1997	43

TABLE	PAGE
Tuition and Fees	
37. Full-time Student Costs for an Academic Year (Two Semesters), 1995-96 through 1997-98	44
Financial Aid	
38. Major Federal, State, and Institutional Need-Based Student Aid Program Expenditures for Undergraduates, 1993-94 through 1996-97	45
Housing	
39. Student Housing, Fall 1994 through Fall 1997	47
40. Housing Facilities	47
Faculty and Staff	
41. Salaried Workforce by Ethnic Origin and Gender, Fall 1997	48
42. Salaried Workforce by Major Organizational Unit, Fall 1997	49
43. Faculty by Ethnic Origin and School/Activity, Fall 1997	51
44. Faculty by Gender and School/Activity, Fall 1997	52
45. Faculty by Rank and School/Activity, Fall 1997	53
46. Tenured Full-Time Instructional Faculty by Gender and Ethnic Origin, Fall 1997	54
47. Faculty by Full-Time/Part-Time Status and Age, Fall 1997	55
48. Average Salary of Full-Time Instructional Faculty by Rank	56
49. Average Compensation of Full-Time Instructional Faculty by Rank	57
Finance	
50. Income of the College, 1988-89 through 1996-97	58
51. Consolidated Income of the College, 1988-89 through 1996-97	59
52. Expenditures of the College, 1988-89 through 1996-97	60
53. Consolidated Expenditures of the College, 1988-89 through 1996-97	61
54. Market Value of the Endowments, 1985-86 through 1996-97	62
55. Gift Support, 1988-89 through 1996-97	63
56. Capital Construction and Renovation, 1990-91 through 1998-99	64
57. Investment in the Physical Plant, 1988-89 through 1996-97	65

TABLE	PAGE
58. Sponsored Program Award Summary by School and Grantor, 1996-97	66
<i>Libraries</i>	
59. Size of Collections of the Libraries, 1992-93 through 1996-97	67
<i>Facilities</i>	
60. Facilities by Completion Period (Table)	68
61. Gross Square Footage of Facilities by Completion Period (Chart)	69
62. Net Square Footage of Facilities by Functional Category, as of October 1, 1997	70
63. Land Holdings	71
<i>Peer Institutions</i>	
64. Location of the Peer Institutions (Map)	72
65. Selected Admission Criteria of the Peer Institutions, Fall 1996	73
66. Headcount Enrollment of the Peer Institutions, Fall 1996	74
67. Headcount Enrollment of the Peer Institutions by Gender, Fall 1996	75
68. Headcount Enrollment of the Peer Institutions by Full-Time/Part-Time Status, Fall 1996	76
69. Retention and Graduation Rates of the Peer Institutions, Fall 1996	77
70. Expenditures of the Peer Institutions, Fiscal Year 1995-96	78
71. Faculty Salaries and Alumni Giving of the Peer Institutions, Fall 1996	79

Mission Statement

The College of William and Mary, a public university in Williamsburg, Virginia, is the second-oldest institution of higher learning in the United States. Established in 1693 by British royal charter, William and Mary is proud of its role as the Alma Mater of generations of American patriots, leaders, and public servants. Now, in its fourth century, it continues this tradition of excellence by combining the best features of an undergraduate college with the opportunities offered by a modern research university. Its moderate size, dedicated faculty, and distinctive history give William and Mary a unique character among public institutions, and create a learning environment that fosters close interaction among students and teachers.

The university's predominantly residential undergraduate program provides a broad liberal education in a stimulating academic environment enhanced by a talented and diverse student body. This nationally acclaimed undergraduate program is integrated with selected graduate and professional programs in five faculties -- Arts and Sciences, Business, Education, Law, and Marine Science. Masters and doctoral programs in the humanities, the sciences, the social sciences, business, education, and law provide a wide variety of intellectual opportunities for students at both graduate and undergraduate levels.

At William and Mary, teaching, research, and public service are linked through programs designed to preserve, transmit, and expand knowledge. Effective teaching imparts knowledge and encourages the intellectual development of both student and teacher. Quality research supports the educational program by introducing students to the challenge and excitement of original discovery, and is a source of the knowledge and understanding needed for a better society. The university recognizes its special responsibility to the citizens of Virginia through public and community service to the Commonwealth as well as to national and international communities. Teaching, research, and public service are all integral parts of the mission of William and Mary.

Goals

In fulfilling its mission, William and Mary adopts the following specific goals:

- to attract outstanding students from diverse backgrounds;
- to develop a diverse faculty which is nationally and internationally recognized for excellence in both teaching and research;
- to provide a challenging undergraduate program with a liberal arts and sciences curriculum that encourages creativity, independent thought, and intellectual depth, breadth, and curiosity;
- to offer high quality graduate and professional programs that prepare students for intellectual, professional, and public leadership;
- to instill in its students an appreciation for the human condition, a concern for the public well-being, and a life-long commitment to learning; and
- to use the scholarship and skills of its faculty and students to further human knowledge and understanding, and to address specific problems confronting the Commonwealth of Virginia, the nation, and the world.

Source: *Into the Fourth Century: A Plan for the Future of the College of William and Mary* (1994).

Table 1: History of Earned Degrees Currently Offered

<u>Degree</u>	<u>Authorized by Board of Visitors</u>	<u>Year of First Earned Degree</u>	<u>Degree Offered</u>
Bachelor of Arts	1792	1772 *	A. B.
Master of Arts	1792	1824	M. A.
Bachelor of Science	1906	1908	B. S.
Master of Education	1948	1948	M. Ed.
Master of Science	1957	1966	M. S.
Doctor of Philosophy	1964	1967	Ph. D.
Doctor of Education	1966	1972	Ed. D.
Master of Business Administration	1966	1968	M. B. A.
Juris Doctor	1967	1968	J. D.
Master of Law	1967	1971	L. L. M.
Bachelor of Business Administration	1971	1973	B. B. A.

* The original A. B. degree was the result of the efforts of Lord Botetourt, colonial governor of Virginia, to stimulate students to complete the examinations for the degree of bachelor of arts. In 1792, after the American Revolution, the Board of Visitors established explicit requirements for the bachelor of arts, as well as the bachelor of law degree.

Note: At certain times in its history, the College has offered earned degrees including Bachelor of Chemistry (B. C.), Bachelor of Civil Law (B. C. L.), Bachelor of Law (B. L.), Certificate of Advanced Study in Education, Doctor of Laws - Science (J. S. D.), Licentiate of Instruction (L. I.), Master of Arts in Teaching (M. A. T.), Master of Law and Taxation (M. L. T.), Master of Taxation (M. T.), Master of Teaching in Science (M. T. S.), and Doctor of Law (LL. D.). In addition, honorary degrees including Doctor of Fine Arts (A. E. D.), Doctor of Arts (D. A.), Doctor of Divinity (D. D.), Doctor of Laws (LL. D.), Bachelor of Laws (B. L.), Doctor of Humane Letters (L. H. D.), Doctor of Literature (Litt. D.), Doctor of Taxation and Law (L. T. D.), and Doctor of Science (Sc. D.) have been awarded.

Source: *The College of William and Mary: A History; Vital Facts: A Chronology of the College of William and Mary*; University Archives.

Table 2: Chancellors of the College

Name	Title	Years Served
Henry Compton	Bishop of London	1693 - 1700
Thomas Tenison	Archbishop of Canterbury	1700 - 1707
Henry Compton	Bishop of London	1707 - 1713
John Robinson	Bishop of London	1714 - 1721
William Wake	Archbishop of Canterbury	1721 - 1729
Edmund Gibson	Bishop of London	1729 - 1736
William Wake	Archbishop of Canterbury	1736 - 1737
Edmund Gibson	Bishop of London	1737 - 1748
Thomas Sherlock	Bishop of London	1749 - 1761
Thomas Hayter	Bishop of London	1762 - 1763
Charles Wyndham	Earl of Egremont	1762 - 1764
Philip Yorke	Earl of Harwick	1764 - 1764
Richard Terrick	Bishop of London	1764 - 1776
George Washington	First President of the United States	1788 - 1799
John Tyler	Tenth President of the United States	1859 - 1862
Hugh Blair Grigsby	Historian	1871 - 1881
John Stewart Bryan	Nineteenth President of the College	1942 - 1944
Colgate W. Darden, Jr.	Governor of Virginia	1946 - 1947
Alvin Duke Chandler	Twenty-first President of the College	1962 - 1974
Warren E. Burger	Fifteenth Chief Justice of the United States	1986 - 1993
Margaret Thatcher	Former Prime Minister of Great Britain	1993 -

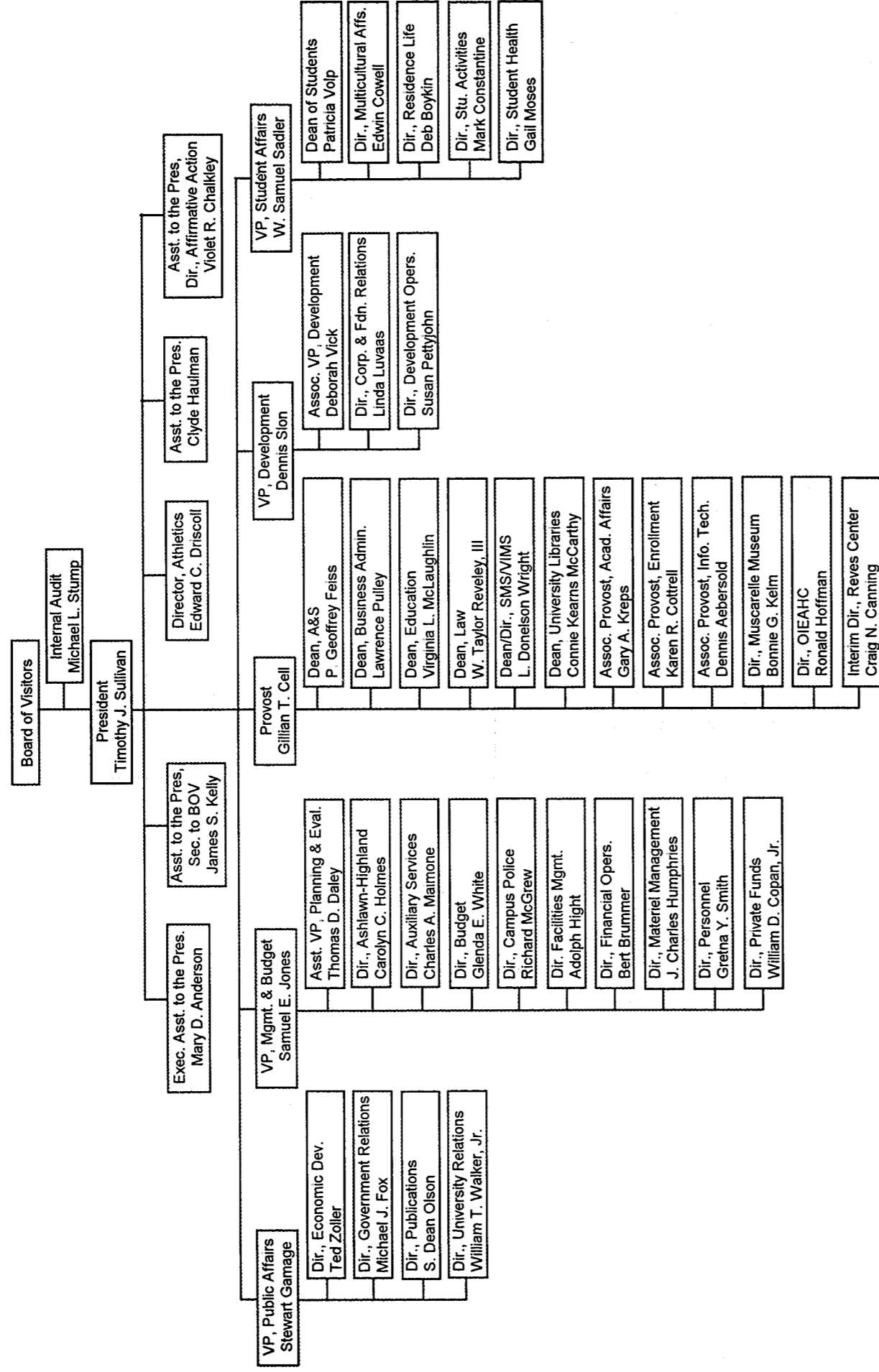
Source: *Vital Facts: A Chronology of the College of William and Mary.*

Table 3: Presidents of the College

Name	Years Served
James Blair	1693 - 1743
William Dawson	1743 - 1752
William Stith	1752 - 1755
Thomas Dawson	1755 - 1760
William Yates	1761 - 1764
James Horrocks	1764 - 1771
John Camm	1771 - 1777
James Madison	1777 - 1812
John Bracken	1812 - 1814
John Augustine Smith	1814 - 1826
William H. Wilmer	1826 - 1827
Adam Empie	1827 - 1836
Thomas Roderick Dew	1836 - 1846
Robert Saunders	1847 - 1848
John Johns	1849 - 1854
Benjamin S. Ewell	1854 - 1888
Lyon G. Tyler	1888 - 1919
Julian A. C. Chandler	1919 - 1934
John Stewart Bryan	1934 - 1942
John Edwin Pomfret	1942 - 1951
Alvin Duke Chandler	1951 - 1960
Davis Young Paschall	1960 - 1971
Thomas Ashley Graves, Jr.	1971 - 1985
Paul Robert Verkuil	1985 - 1992
Timothy Jackson Sullivan	1992 -

Source: *Vital Facts: A Chronology of the College of William and Mary.*

Table 4: Administrative Organization, Summer 1998



Note: Organizational structure as of July 1, 1998.

Source: Provost's Office.

Table 5: First-Time Freshman and Transfer Applications, Offers, and Accepts
Fall 1988 - Fall 1997

First-Time Freshmen	1988	1989	1990	1991	1992	1993	1994	1995	1996	1997
Total Applications	10,000	9,478	7,877	8,140	8,274	7,916	8,169	7,946	7,420	7,200
Completed Applications	8,347	9,446	6,551	7,125	7,222	7,448	7,797	6,804	7,079	6,599
Offers Made	2,400	2,538	2,881	2,878	2,997	3,101	3,118	3,335	3,232	3,033
Offer Rate	24%	27%	37%	35%	36%	39%	38%	42%	44%	42%
Offers Accepted	1,197	1,266	1,235	1,221	1,215	1,211	1,252	1,373	1,333	1,331
Yield	50%	50%	43%	42%	41%	39%	40%	41%	41%	44%
Transfers										
Total Applications	869	921	850	807	634	667	656	623	580	529
Completed Applications	649	885	652	637	581	510	656	582	580	514
Offers Made	163	179	248	191	285	247	328	323	348	297
Offer Rate	19%	19%	29%	24%	45%	37%	50%	52%	60%	56%
Offers Accepted	104	99	146	111	193	172	203	187	179	147
Yield	64%	55%	59%	58%	68%	70%	62%	58%	51%	49%

Note: Offer rate represents "Offers Made" as a percent of "Total Applications." Yield rate represents "Offers Accepted" as a percent of "Offers Made."

Source: SCHEV B8, Admission Profiles (total application data), Office of Admission.

**Table 6: First-Time Freshman Statistical Admission Criteria
Fall 1993 - Fall 1997**

SAT Scores	1993	1994	1995	1996	1997
	Count	Count	Count	Count	Count
Total					
Ninetieth Percentile	1390	1410	1440	1440	1440
Top Quartile (75%)	1330	1330	1380	1380	1380
Median (50%)	1250	1240	1300	1310	1300
Bottom Quartile (25%)	1150	1130	1220	1210	1210
Tenth Percentile	1040	1050	1140	1130	1110
Mean	1233	1227	1295	1295	1287
Verbal					
Ninetieth Percentile	690	690	750	750	750
Top Quartile (75%)	650	650	710	710	710
Median (50%)	600	590	670	660	650
Bottom Quartile (25%)	540	540	600	600	600
Tenth Percentile	480	480	560	560	550
Mean	593	591	657	656	652
Mathematics					
Ninetieth Percentile	730	730	730	720	720
Top Quartile (75%)	700	690	680	690	680
Median (50%)	640	640	650	640	640
Bottom Quartile (25%)	590	580	600	600	590
Tenth Percentile	540	540	560	550	540
Mean	640	636	638	639	635
High School Decile Rank					
Top Tenth	714	645	680	655	648
Second Tenth	192	191	170	163	178
Second Fifth	N.A.	71	79	58	69
Bottom Three-fifths	N.A.	16	11	11	14
Unranked	219	329	433	446	422
	18%	26%	31%	33%	34%

Note: SAT scores were recentered in 1995, which caused the scores, especially verbal, to increase. Transfer students are excluded. Percentages exclude students not reporting a rank (unranked); percentages for "Unranked" represent percentages of the entering class.

Source: Student Information System.

**Table 7: First-Time Freshmen by Geographic Origin
Fall 1993 - Fall 1997**

	1993		1994		1995		1996		1997	
	Count	Percent	Count	Percent	Count	Percent	Count	Percent	Count	Percent
Virginia	744	61%	833	67%	913	66%	863	65%	870	65%
Mid-Atlantic	245	20%	195	16%	235	17%	235	18%	221	17%
South	71	6%	50	4%	59	4%	67	5%	62	5%
New England	56	5%	66	5%	57	4%	62	5%	68	5%
Midwest	42	3%	48	4%	41	3%	48	4%	54	4%
Far West	24	2%	17	1%	28	2%	28	2%	21	2%
Unknown	6	0%	17	1%	9	1%	11	1%	13	1%
U.S. Territories	1	0%	2	0%	4	0%	1	0%	0	0%
Foreign Countries	22	2%	24	2%	27	2%	18	1%	22	2%
Total	1,211		1,252		1,373		1,333		1,331	

Source: Admission Profiles, Office of Admission.

**Table 8: Admissions to the Graduate and First Professional Schools
Fall 1993 - Fall 1997**

	1993		1994		1995		1996		1997	
	Count	Percent	Count	Percent	Count	Percent	Count	Percent	Count	Percent
Arts and Sciences										
Total Applications	1,235		1,226		963		922		839	
Offers Made	334	27% *	312	25%	334	35%	308	33%	331	39%
Offers Accepted	168	50% **	158	51%	176	53%	135	44%	145	44%
Education										
Total Applications	420		342		527		392		398	
Offers Made	258	61%	239	70%	313	59%	217	55%	258	65%
Offers Accepted	151	59%	168	70%	208	66%	144	66%	139	54%
Graduate Business										
Total Applications	394		393		413		395		424	
Offers Made	240	61%	263	67%	248	60%	215	54%	259	61%
Offers Accepted	111	46%	132	50%	144	58%	95	44%	140	54%
Law										
Total Applications	3,321		3,325		3,037		2,661		2,363	
Offers Made	717	22%	703	21%	737	24%	792	30%	722	31%
Offers Accepted	179	25%	188	27%	197	27%	203	26%	180	25%
Marine Science										
Total Applications	262		291		215		240		218	
Offers Made	60	23%	68	23%	56	26%	48	20%	50	23%
Offers Accepted	34	57%	37	54%	27	48%	31	65%	27	54%

* Represents "Offers Made" as a percent of "Total Applications" (offer rate).

** Represents "Offers Accepted" as a percent of "Offers Made" (yield rate).

Note: Unclassified students are excluded. Applicants who apply to more than one school or department are counted once. Masters programs in English, Government, Mathematics, and Sociology were phased out through implementation of the strategic plan, explained in *Into the Fourth Century: A Plan for the Future of the College of William and Mary* (1994). The plan implementation also restructured graduate programs in the School of Education. Results of the restructuring are apparent beginning with 1995.

Source: Office of Planning and Institutional Research.

**Table 9: Graduate and First Professional Statistical Admission Criteria
Fall 1993 - Fall 1997**

	1993	1994	1995	1996	1997
	Arts and Sciences				
GRE Verbal	585	584	563	590	559
GRE Mathematics	621	624	646	669	638
GRE Analytical	635	636	645	664	641
Mean Undergraduate GPA	3.28	3.31	3.36	3.43	3.40
Education					
GRE Verbal	580	543	535	533	535
GRE Mathematics	625	585	577	573	586
GRE Analytical	590	610	590	601	618
Mean Undergraduate GPA	3.17	3.20	3.18	3.24	3.16
Graduate Business Administration					
GMAT	583	580	595	605	620
Mean Undergraduate GPA	3.00	3.10	3.20	3.20	3.30
Law					
LSAT	164	164	163	163	162
Mean Undergraduate GPA	3.34	3.43	3.39	3.36	3.30
Marine Science					
GRE Verbal	573	606	604	590	610
GRE Mathematics	654	681	660	648	661
GRE Analytical	624	699	670	627	674
Mean Undergraduate GPA	3.31	3.25	3.31	3.32	3.31

Note: The range of possible scores for all tests except the LSAT is 200 to 800. The range of possible scores for the LSAT is 120 to 180. Mean undergraduate GPAs are reported on a 4.00 scale.

Source: Dean's Offices, Graduate Arts and Sciences, School of Education, School of Business, School of Law, and Virginia Institute of Marine Science.

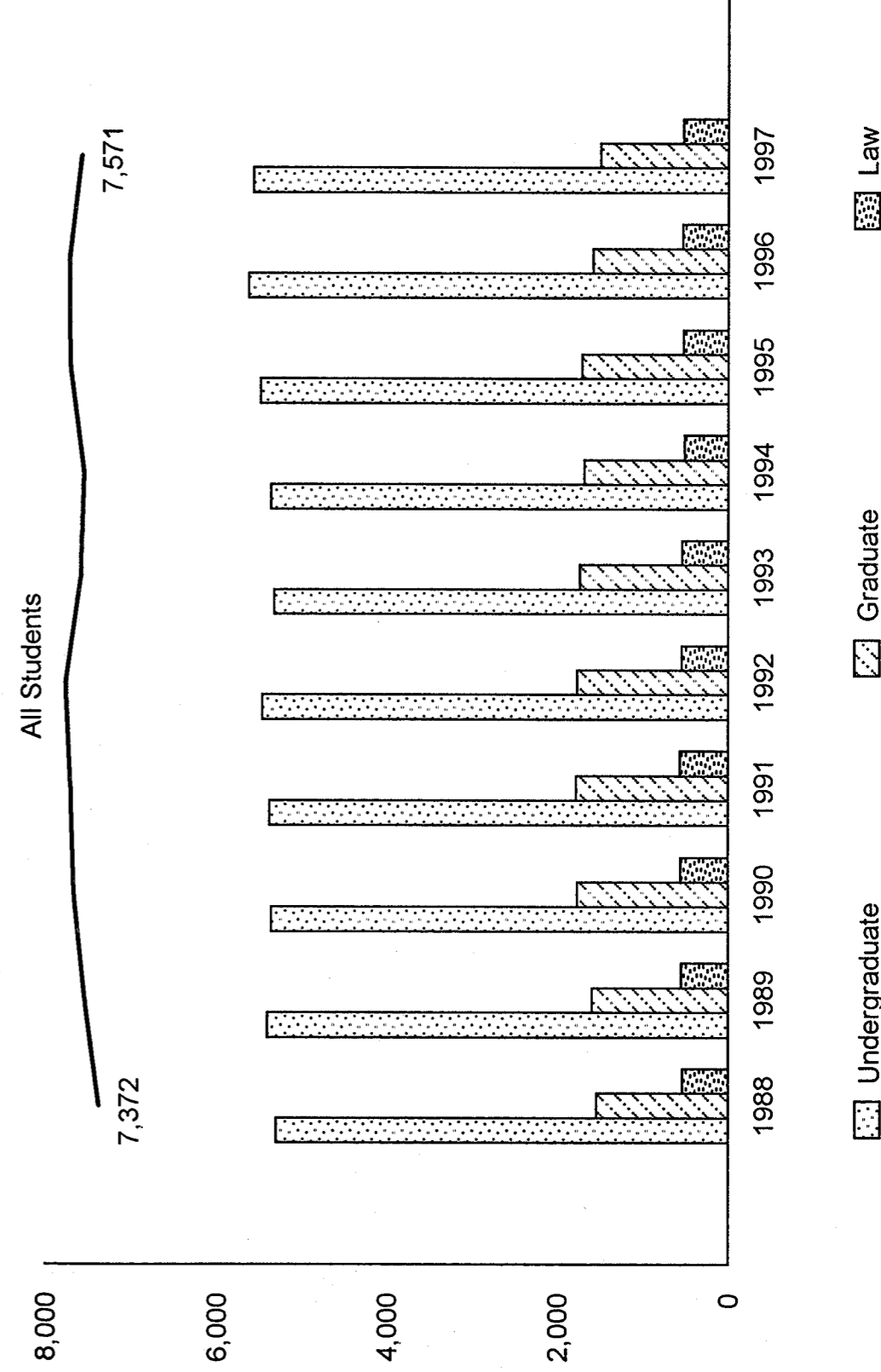
Table 10: Fall Headcount Enrollment by School, 1988 - 1997

	1988	1989	1990	1991	1992	1993	1994	1995	1996	1997
Undergraduate										
Arts and Sciences	4,707	4,799	4,882	4,909	5,027	4,917	4,933	5,061	5,170	5,116
Business	433	429	363	357	308	297	319	304	319	386
Education	60	58	35	3	0	0	0	0	0	0
Unclassified	100	118	76	107	121	106	107	115	129	61
Total Undergraduate	5,300	5,404	5,356	5,376	5,456	5,320	5,359	5,480	5,618	5,563
Graduate										
Arts and Sciences	337	317	369	396	457	463	450	470	430	388
Business	316	367	430	435	411	340	353	386	373	390
Education	392	492	519	489	505	535	511	489	426	369
Graduate Law	35	30	38	32	22	7	9	18	3	6
Marine Science	101	102	107	113	112	124	129	125	122	120
Unclassified	358	282	301	307	258	262	228	219	220	214
Total Graduate	1,539	1,590	1,764	1,772	1,765	1,731	1,680	1,707	1,574	1,487
First Professional										
Law	533	548	552	562	545	535	508	522	530	521
Grand Total	7,372	7,542	7,672	7,710	7,766	7,586	7,547	7,709	7,722	7,571

Note: Beginning in 1997, students studying abroad are excluded. There were 94 such students, all of whom were undergraduates, in 1997. Beginning in fall 1991, undergraduates seeking teaching certifications in education were counted with Arts and Sciences, because such students were required to declare primary concentrations in Arts and Sciences. Masters programs in English, Government, Mathematics, and Sociology were phased out through implementation of the strategic plan, explained in *Into the Fourth Century: A Plan for the Future of the College of William and Mary* (1994). The plan implementation also restructured graduate programs in the School of Education. Results of the restructuring are apparent beginning with 1995.

Source: SCHEV Fall Headcount Enrollment File

Table 11: Fall Headcount Enrollment 1988 - 1997



Note: Beginning in 1997, students studying abroad are excluded. There were 94 such students, all undergraduates, in 1997.
Source: SCHEV Fall Headcount Enrollment File.

**Table 12: Summer Session Headcount Enrollment by School
1992 - 1996**

	1992	1993	1994	1995	1996
<u>Undergraduate</u>					
Arts and Sciences	758	686	644	609	636
Business	61	61	49	56	49
Total Undergraduate	819	747	693	665	685
<u>Graduate</u>					
Arts and Sciences	38	32	25	117	123
Business	215	179	174	182	200
Education	345	385	341	364	291
Graduate Law	0	2	0	2	1
Marine Science	93	97	104	108	103
Total Graduate	691	695	644	773	718
<u>First Professional</u>					
Law	108	80	54	71	61
<u>Unclassified</u>	565	491	507	410	411
Grand Total	2,183	2,013	1,898	1,919	1,875

Source: SCHEV Summer Headcount Enrollment File.

Table 13: Fall Headcount Enrollment of Virginia Residents, 1993 - 1997

	1993	1994	1995	1996	1997
<u>Undergraduate</u>					
Arts and Sciences	3,180	3,256	3,425	3,464	3,463
Business	186	193	184	206	249
Unclassified	86	72	86	87	54
Total Undergraduate	3,452	3,521	3,695	3,757	3,766
<u>Graduate</u>					
Arts and Sciences	203	180	198	188	173
Business	256	251	293	294	309
Education	484	442	421	370	322
Graduate Law	3	2	8	0	0
Marine Science	29	46	49	43	59
Unclassified	216	181	161	173	149
Total Graduate	1,191	1,102	1,130	1,068	1,012
<u>First Professional</u>					
Law	398	361	366	365	375
Grand Total	5,041	4,984	5,191	5,190	5,153

Note: Beginning in 1997, students studying abroad are excluded. In 1997, 57 (61%) of those students, all of whom were undergraduates, were Virginia residents. Beginning in fall 1991, undergraduates seeking teaching certifications in education were counted with Arts and Sciences, because such students were required to declare primary concentrations in Arts and Sciences. Masters programs in English, Government, Mathematics, and Sociology were phased out through implementation of the strategic plan, explained in *Into the Fourth Century: A Plan for the Future of the College of William and Mary* (1994). The plan implementation also restructured graduate programs in the School of Education. Results of the restructuring are apparent beginning with 1995.

Source: SCHEV Fall Headcount Enrollment File.

Table 14: Fall Headcount Enrollment by State, 1992 - 1997

	1992	1993	1994	1995	1996	1997
Alabama	11	8	9	6	6	5
Alaska	3	2	3	1	0	1
Arizona	9	7	7	7	6	7
Arkansas	2	4	1	4	4	3
California	58	83	74	84	68	56
Colorado	15	17	16	9	16	17
Connecticut	104	111	99	97	93	79
Delaware	22	23	21	25	26	30
District of Columbia	20	22	16	17	19	16
Florida	74	74	83	74	73	78
Georgia	57	54	58	52	52	44
Hawaii	3	4	0	3	3	4
Hawaii	3	3	2	6	5	3
Idaho	33	50	46	52	53	50
Illinois	20	14	16	19	18	17
Indiana	8	4	5	2	4	5
Iowa	8	7	6	9	7	9
Kansas	16	13	11	12	14	9
Kentucky	11	9	7	8	8	11
Louisiana	15	23	17	14	11	8
Maine	172	192	182	179	175	171
Maryland	120	116	109	116	105	112
Massachusetts	24	22	21	21	18	21
Michigan	20	16	9	7	7	9
Minnesota	7	8	4	6	7	4
Mississippi	15	23	23	23	24	22
Missouri	1	1	3	3	1	0
Montana	3	4	2	3	2	3
Nebraska	1	2	1	2	3	3
Nevada	22	20	15	18	17	18
New Hampshire	261	265	262	261	272	278

continued on the following page

Table 14: Fall Headcount Enrollment by State, 1992 - 1997 (continued)

	1992	1993	1994	1995	1996	1997
New Mexico	6	8	3	0	1	2
New York	227	272	296	301	294	261
North Carolina	59	65	61	51	52	56
North Dakota	4	2	1	1	0	0
Ohio	66	54	57	51	57	69
Oklahoma	3	5	4	5	4	3
Oregon	5	8	8	4	10	5
Pennsylvania	255	227	205	226	241	233
Rhode Island	14	13	9	11	13	16
South Carolina	21	19	21	22	22	15
Tennessee	14	19	20	24	27	23
Texas	44	50	39	47	40	39
Utah	2	6	4	4	5	3
Vermont	6	8	12	13	10	11
Virginia	5,733	5,041	4,984	5,191	5,190	5,153
Washington	13	12	12	24	13	11
West Virginia	10	14	13	12	12	6
Wisconsin	16	16	25	25	25	21
Wyoming	1	193	2	1	2	1
Unknown	4	241	493	394	442	428
American Territories	5	5	12	14	11	7
Foreign Countries	120	107	138	148	134	115
Total	7,766	7,586	7,547	7,709	7,722	7,571

Note: Beginning in 1997, students studying abroad are excluded.

Source: SCHEV Fall Headcount Enrollment File.

Table 15: Fall Headcount Enrollment by State, 1997

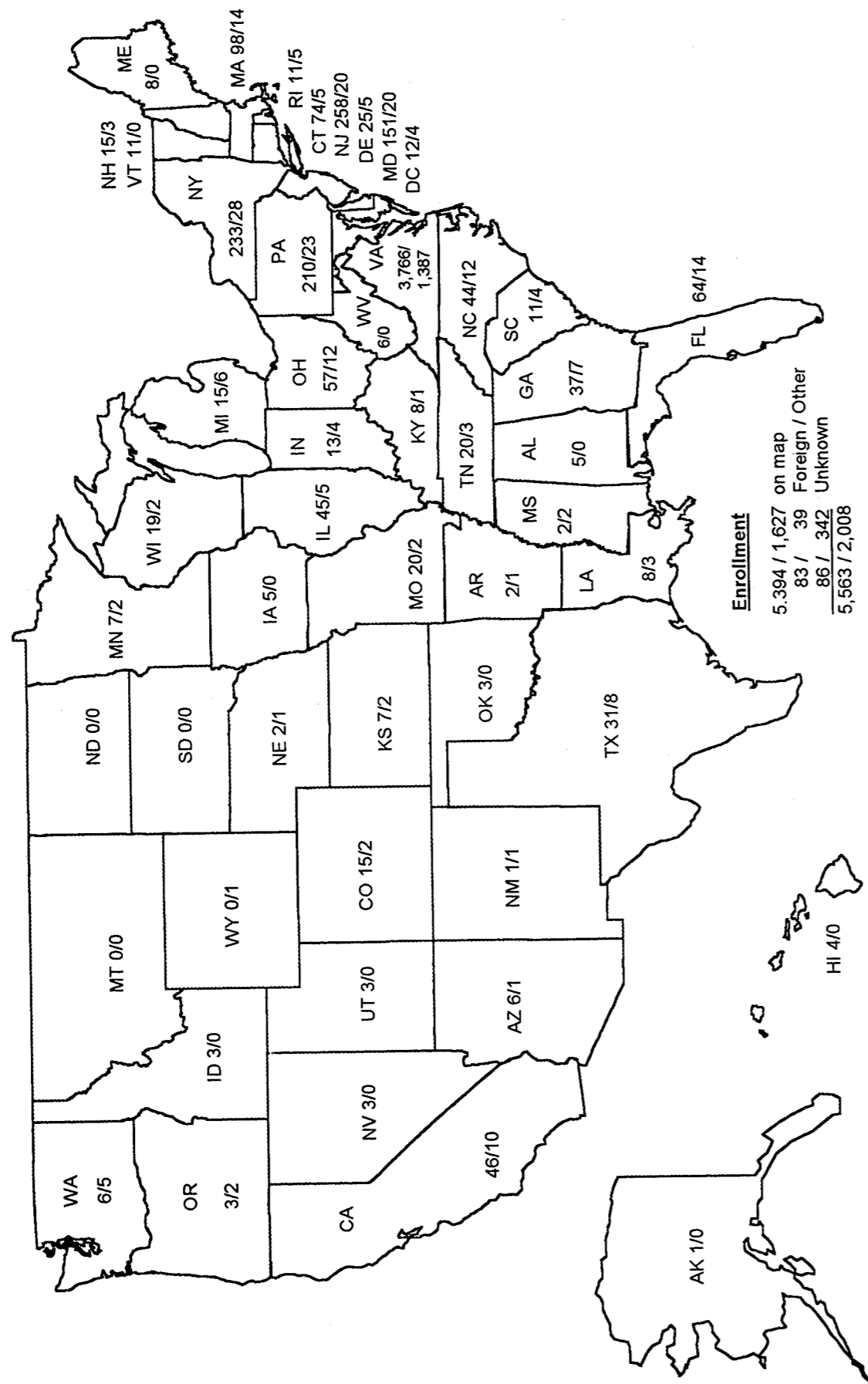


Table 16: Fall Headcount Enrollment of Virginia Residents by City or County 1994 - 1997

City/County	1994		1995		1996		1997	
	Under-Grad	Grad. & 1st Prof.	Under-Grad	Grad. & 1st Prof.	Under-Grad	Grad. & 1st Prof.	Under-Grad	Grad. & 1st Prof.
Accomack County	9	4	14	2	19	0	23	1
Albemarle County	9	2	14	4	17	4	16	4
Alexandria City	171	30	170	24	160	17	156	19
Amelia County	2	0	2	0	2	0	5	0
Amherst County	7	0	6	1	8	1	6	1
Appomattox County	8	0	8	0	5	0	5	0
Arlington County	95	19	105	25	99	18	98	16
Augusta County	10	0	10	0	10	0	9	1
Bath County	0	0	0	1	1	0	2	0
Bedford City	5	0	7	0	5	0	2	0
Bedford County	14	0	15	1	20	1	24	1
Bland County	0	0	0	0	1	0	2	0
Botetourt County	9	0	14	0	14	1	13	1
Bristol City	2	1	5	0	6	0	7	0
Brunswick County	4	2	2	2	2	0	5	0
Buchanan County	4	0	4	0	5	0	3	0
Buckingham County	3	0	5	0	3	0	5	0
Buena Vista City	1	0	2	0	2	0	3	0
Campbell County	9	0	5	0	8	1	7	1
Caroline County	4	2	3	0	2	1	7	1
Carroll County	3	1	2	1	2	0	2	0
Charles City County	6	3	4	6	2	7	2	8
Charlotte County	2	1	2	0	2	0	4	0
Charlottesville City	37	12	43	13	43	10	40	12
Chesapeake City	78	41	70	43	75	39	85	43
Chesterfield County	104	23	102	30	100	25	99	18
Clarke County	6	0	6	0	5	0	9	1
Clifton Forge City	2	1	2	0	2	0	1	0
Colonial Heights City	15	5	19	3	18	3	15	3
Covington City	3	0	3	0	1	0	0	0
Craig County	1	0	2	0	3	0	3	0
Culpeper County	7	0	6	1	6	0	10	0
Cumberland County	0	0	2	0	1	0	1	0
Danville City	21	1	33	1	33	1	27	0
Dickenson County	1	1	0	0	1	0	1	0
Dinwiddie County	6	1	1	3	1	2	2	2
Emporia City	2	1	2	1	0	1	1	1
Essex County	5	3	4	3	3	0	3	1
Fairfax City	177	12	189	8	175	10	160	15
Fairfax County	613	69	641	59	663	54	669	43
Falls Church City	58	4	60	4	63	2	75	1
Fauquier County	21	1	19	1	14	0	18	0
Floyd County	1	1	1	1	1	0	0	0
Fluvanna County	2	1	0	0	1	2	4	2
Franklin City	6	0	6	0	5	2	3	1
Franklin County	8	2	9	1	8	0	7	0
Frederick County	10	1	12	1	10	0	11	0
Fredericksburg City	48	4	55	4	53	4	53	5
Galax City	1	0	2	0	3	0	2	0
Giles County	2	1	2	2	3	1	2	1
Gloucester County	23	52	21	44	28	45	26	43
Goochland County	4	1	3	0	3	3	4	1
Grayson County	1	0	0	0	0	0	0	0

NOTE: Enrollments from each state follow the format "number undergraduate/number graduate and first-professional." Students studying abroad are excluded.
 SOURCE: SCHEV, Fall 1997, Headcount File.

continued on the following page

Table 16: Fall Headcount Enrollment of Virginia Residents by City or County, 1994 - 1997 (continued)

City/County	1994		1995		1996		1997	
	Under-Grad	Grad. & 1st Prof.	Under-Grad	Grad. & 1st Prof.	Under-Grad	Grad. & 1st Prof.	Under-Grad	Grad. & 1st Prof.
Greene County	3	2	4	0	2	0	0	0
Halifax County	5	0	4	0	5	0	3	0
Hampton City	61	80	71	71	74	69	82	52
Hanover County	36	14	34	19	42	15	44	11
Harrisonburg City	21	1	21	2	28	2	20	4
Henrico County	15	8	23	9	30	12	32	13
Henry County	6	2	10	2	12	1	13	0
Hopewell City	13	5	10	5	10	4	10	3
Isle of Wight County	8	4	10	5	8	8	8	6
James City County	9	7	7	7	6	4	4	3
King and Queen County	2	0	3	2	1	2	0	0
King George County	11	2	12	2	7	1	5	0
King William County	7	8	3	5	4	5	3	3
Lancaster County	12	4	14	5	13	2	13	2
Lee County	3	0	3	0	3	0	4	0
Lexington City	5	0	5	0	5	1	8	0
Loudoun County	54	4	65	3	63	8	57	8
Louisa County	4	0	3	1	6	0	5	0
Lunenburg County	4	0	3	1	3	1	1	1
Lynchburg City	36	5	33	5	37	3	41	4
Madison County	6	0	6	0	6	0	9	0
Manassas City	47	0	58	2	63	2	61	2
Manassas Park City	1	0	0	0	1	0	2	0
Martinsville City	11	0	6	0	6	0	7	0
Mathews County	7	3	2	6	2	5	6	7
Mecklenburg County	7	1	11	0	8	1	10	0
Middlesex County	6	2	9	4	11	3	11	3
Montgomery County	28	2	31	1	33	2	28	6
Nelson County	9	1	6	1	5	0	8	2
New Kent County	15	8	15	11	14	6	14	8
Newport News City	95	180	106	168	96	150	88	140
Norfolk City	50	47	57	41	57	33	53	43
Northampton County	3	0	2	0	2	0	5	0
Northumberland County	2	5	1	4	1	3	3	2
Norton City	1	0	0	0	0	0	2	0
Nottoway County	4	0	4	0	5	0	6	1
Orange County	13	1	8	0	7	1	6	0
Page County	4	0	6	0	6	0	8	1
Patrick County	2	0	3	0	4	0	4	0
Petersburg City	16	2	9	3	10	4	10	2
Pittsylvania County	6	0	7	0	6	0	5	0
Poquoson City	19	18	21	16	19	12	16	16
Portsmouth City	21	13	18	14	19	12	21	11
Powhatan County	6	0	3	1	6	0	6	1
Prince Edward County	4	0	5	1	5	4	6	2
Prince George County	11	1	12	2	10	4	8	3
Prince William County	102	5	100	5	111	4	114	7
Pulaski County	12	0	13	0	11	0	6	1
Radford City	4	1	7	2	7	2	11	1
Rappahannock County	1	0	3	1	2	0	5	0
Richmond County	3	2	1	1	2	2	3	3
Richmond City	245	82	230	98	254	96	242	90
Roanoke County	4	0	5	0	3	0	1	1
Roanoke City	61	7	65	7	62	4	63	5
Rockbridge County	3	0	3	0	1	0	0	0

continued on the following page

Table 16: Fall Headcount Enrollment of Virginia Residents by City or County, 1994 - 1997 (continued)

City/County	1994		1995		1996		1997	
	Under-Grad	Grad. & 1st Prof.	Under-Grad	Grad. & 1st Prof.	Under-Grad	Grad. & 1st Prof.	Under-Grad	Grad. & 1st Prof.
Rockingham County	13	2	14	1	13	0	14	0
Russell County	1	0	7	0	8	0	7	0
Salem City	13	0	14	0	15	0	12	1
Scott County	2	0	2	0	0	0	0	0
Shenandoah County	4	1	5	1	9	0	11	0
Smyth County	2	0	5	0	7	0	4	0
South Boston City	3	0	3	0	2	0	2	0
Southampton County	8	0	4	0	7	0	8	0
Spotsylvania County	12	0	11	0	9	0	7	0
Stafford County	19	0	19	1	19	3	22	2
Staunton City	8	1	6	1	9	0	8	0
Suffolk City	18	7	20	6	22	11	24	11
Surry County	3	4	3	2	2	2	2	3
Sussex County	5	2	5	1	4	1	2	1
Tazewell County	8	0	10	0	7	1	7	0
Virginia Beach City	203	84	218	87	242	83	256	72
Warren County	8	0	7	0	5	0	6	1
Washington County	7	0	13	0	12	0	15	0
Waynesboro City	8	1	10	0	8	0	10	1
Westmoreland County	5	2	7	2	8	1	10	1
Williamsburg City	256	403	276	429	258	474	242	454
Winchester City	17	1	22	1	24	0	28	1
Wise County	2	2	3	1	3	0	2	0
Wythe County	7	0	8	0	7	0	5	1
York County	38	79	41	84	46	62	44	68
Unknown	67	44	77	56	80	52	80	55
Total	3,521	1,463	3,695	1,496	3,757	1,433	3,766	1,387

Note: Beginning in 1997, students studying abroad were excluded.

Source: SCHEV Fall Headcount File.

Table 17: Fall Headcount Enrollment by Ethnic Origin, 1997

Undergraduate	Non-Resident Alien		African American		Native American		Asian		Hispanic		White		Total
	Count	%	Count	%	Count	%	Count	%	Count	%	Count	%	
Arts and Sciences	62	1%	280	5%	13	0%	341	7%	131	3%	4,289	84%	5,116
Business	11	3%	16	4%	0	0%	54	14%	8	2%	297	77%	386
Unclassified	1	2%	4	7%	0	0%	3	5%	2	3%	51	84%	61
Total Undergraduate	74	1%	300	5%	13	0%	398	7%	141	3%	4,637	83%	5,563
Graduate													
Arts and Sciences	54	14%	25	6%	2	1%	10	3%	6	2%	291	75%	388
Business	13	3%	7	2%	1	0%	12	3%	7	2%	350	90%	390
Education	1	0%	32	9%	1	0%	11	3%	9	2%	315	85%	369
Graduate Law	5	83%	0	0%	0	0%	0	0%	0	0%	1	17%	6
Marine Science	8	7%	3	3%	0	0%	5	4%	5	4%	99	83%	120
Unclassified	14	7%	15	7%	0	0%	4	2%	1	0%	180	84%	214
Total Graduate	95	6%	82	6%	4	0%	42	3%	28	2%	1,236	83%	1,487
First Professional													
Law	4	1%	78	15%	3	1%	17	3%	7	1%	412	79%	521
Grand Total	173	2%	460	6%	20	0%	457	6%	176	2%	6,285	83%	7,571

Note: This table excludes students studying abroad.

Source: SCHEV Fall Headcount Enrollment File.

Table 18: Fall Headcount Enrollment of African American Students, 1993 - 1997

Undergraduate	1993		1994		1995		1996		1997	
	Count	Percent	Count	Percent	Count	Percent	Count	Percent	Count	Percent
Arts and Sciences	332	7%	331	7%	330	7%	312	6%	280	5%
Business	12	4%	15	5%	18	6%	16	5%	16	4%
Unclassified	6	6%	2	2%	3	3%	8	6%	4	7%
Total Undergraduate	350	7%	348	6%	351	6%	336	6%	300	5%
Graduate										
Arts and Sciences	25	5%	24	5%	26	6%	24	6%	25	6%
Business	16	5%	14	4%	16	4%	12	3%	7	2%
Education	38	7%	37	7%	34	7%	33	8%	32	9%
Graduate Law	0	0%	0	0%	0	0%	0	0%	0	0%
Marine Science	5	4%	6	5%	6	5%	4	3%	3	3%
Unclassified	21	8%	22	10%	19	9%	22	10%	15	7%
Total Graduate	105	6%	103	6%	101	6%	95	6%	82	6%
First Professional										
Law	56	10%	57	11%	61	12%	72	14%	78	15%
Grand Total	511	7%	508	7%	513	7%	503	7%	460	6%

Note: Beginning in 1997, students studying abroad are excluded. In 1997, four (4%) of those students, all of whom were undergraduates, were African American. Beginning in fall 1991, undergraduates seeking teaching certifications in education were counted with Arts and Sciences, because such students were required to declare primary concentrations in Arts and Sciences. Masters programs in English, Government, Mathematics, and Sociology were phased out through implementation of the strategic plan, explained in *Into the Fourth Century: A Plan for the Future of the College of William and Mary* (1994). The plan implementation also restructured graduate programs in the School of Education. Results of the restructuring are apparent beginning with 1995.

Source: SCHEV Fall Headcount Enrollment File.

Table 19: Fall Headcount Enrollment of Female Students, 1993 - 1997

	1993		1994		1995		1996		1997	
	Count	Percent	Count	Percent	Count	Percent	Count	Percent	Count	Percent
<u>Undergraduate</u>										
Arts and Sciences	2,764	56%	2,795	57%	2,989	59%	3,089	60%	3,094	60%
Business	133	45%	140	44%	129	42%	148	46%	190	49%
Unclassified	51	48%	60	56%	67	58%	75	58%	41	67%
Total Undergraduate	2,948	55%	2,995	56%	3,185	58%	3,312	59%	3,325	60%
<u>Graduate</u>										
Arts and Sciences	208	45%	209	46%	227	48%	189	44%	173	45%
Business	99	29%	107	30%	110	28%	105	28%	100	26%
Education	419	78%	394	77%	379	78%	330	77%	286	78%
Graduate Law	2	29%	3	33%	6	33%	2	67%	3	50%
Marine Science	54	44%	61	47%	59	47%	53	43%	52	43%
Unclassified	189	72%	151	66%	158	72%	160	73%	147	69%
Total Graduate	971	56%	925	55%	939	55%	839	53%	761	51%
<u>First Professional</u>										
Law	237	44%	220	43%	230	44%	244	46%	238	46%
Grand Total	4,156	55%	4,140	55%	4,354	56%	4,395	57%	4,324	57%

Note: Beginning in 1997, students studying abroad are excluded. In 1997, 66 (70%) of those students, all of whom were undergraduates, were women. Beginning in fall 1991, undergraduates seeking teaching certifications in education were counted with Arts and Sciences, because such students were required to declare primary concentrations in Arts and Sciences. Masters programs in English, Government, Mathematics, and Sociology were phased out through implementation of the strategic plan, explained in *Into the Fourth Century: A Plan for the Future of the College of William and Mary* (1994). The plan implementation also restructured graduate programs in the School of Education. Results of the restructuring are apparent beginning with 1995.

Table 20: Fall Headcount Enrollment by Full-Time/Part-Time Status, 1993 - 1997

	1993		1994		1995		1996		1997	
	Full-Time	Part-Time	Full-Time	Part-Time	Full-Time	Part-Time	Full-Time	Part-Time	Full-Time	Part-Time
<u>Undergraduate</u>										
Arts and Sciences	4,859	58	4,869	64	5,009	52	5,106	64	5,058	58
Business	297	0	315	4	300	4	318	1	382	4
Unclassified	24	82	21	86	17	98	8	121	4	57
Total Undergraduate	5,180	140	5,205	154	5,326	154	5,432	186	5,444	119
<u>Graduate</u>										
Arts and Sciences	390	73	389	61	406	64	359	71	346	42
Business	189	151	226	127	247	139	239	134	237	153
Education	193	342	183	328	189	300	168	258	160	209
Graduate Law	7	0	9	0	18	0	3	0	6	0
Marine Science	86	38	84	45	92	33	96	26	102	18
Unclassified	12	250	13	215	13	206	22	198	24	190
Total Graduate	877	854	904	776	965	742	887	687	875	612
<u>First Professional</u>										
Law	535	0	508	0	522	0	530	0	521	0
Grand Total	6,592	994	6,617	930	6,813	896	6,849	873	6,840	731

Note: Beginning in 1997, students studying abroad are excluded. In 1997, 94 (100%) of those students, all of whom were undergraduates, were full-time. Beginning in fall 1991, undergraduates seeking teaching certifications in education were counted with Arts and Sciences, because such students were required to declare primary concentrations in Arts and Sciences. Masters programs in English, Government, Mathematics, and Sociology were phased out through implementation of the strategic plan, explained in *Into the Fourth Century: A Plan for the Future of the College of William and Mary* (1994). The plan implementation also restructured graduate programs in the School of Education. Results of the restructuring are apparent beginning with 1995.

**Table 21: Fall Headcount Enrollment of Undergraduate Students by School
and Academic Level, 1993 - 1997**

Year	School	First-Time Freshmen		Other Freshmen		Total Freshmen		Sophomores	Juniors	Seniors	Total
		Count	%	Count	%	Count	%				
1993	Arts and Sciences	1,211		228		1,439		1,162	1,092	1,224	4,917
	Business	0		0		0		0	152	145	297
1994	Arts and Sciences	1,252		116		1,368		1,236	1,144	1,185	4,933
	Business	0		0		0		0	160	159	319
1995	Arts and Sciences	1,373		50		1,423		1,308	1,128	1,202	5,061
	Business	0		0		0		0	149	155	304
1996	Arts and Sciences	1,333		212		1,545		1,331	1,142	1,152	5,170
	Business	0		0		0		0	176	143	319
1997	Arts and Sciences	1,331		57		1,388		1,344	1,208	1,176	5,116
	Business	0		0		0		0	197	189	386

Note: This table is based on cumulative hours earned, not length of time since matriculation. Some students matriculate with enough advanced standing to be considered sophomores; there were 38 such students in 1997. Beginning in 1997, students studying abroad are excluded. All unclassified students are excluded. Beginning in fall 1991, undergraduates seeking teaching certifications in education were counted with Arts and Sciences, because such students were required to declare primary concentrations in Arts and Sciences.

Source: SCHEV Fall Headcount Enrollment File.

Table 22: Fall Headcount Enrollment by Age, 1997

Undergraduate	17 and under		18-21		22-25		26-30		31-35		36 and over		Under 21	
	Count	%	Count	%	Count	%	Count	%	Count	%	Count	%	Count	%
Arts and Sciences	172	3%	4,600	93%	256	98%	41	99%	18	99%	29	100%	3,897	76%
Business	1	0%	342	89%	34	98%	5	99%	1	99%	3	100%	210	54%
Unclassified	25	41%	8	54%	8	67%	7	79%	3	84%	10	100%	31	51%
Total Undergraduate	198	3%	4,950	93%	298	98%	53	99%	22	99%	42	100%	4,138	74%
Graduate														
Arts and Sciences	0	0%	7	2%	137	37%	135	72%	59	87%	50	100%	1	0%
Business	0	0%	2	1%	61	16%	200	67%	77	87%	50	100%	0	0%
Education	0	0%	7	2%	76	22%	82	45%	36	54%	168	100%	1	0%
Graduate Law	0	0%	0	0%	2	33%	2	67%	0	67%	2	100%	0	0%
Marine Science	0	0%	1	1%	41	35%	39	68%	22	86%	17	100%	0	0%
Unclassified	0	0%	7	3%	51	27%	42	47%	20	56%	94	100%	5	2%
Total Graduate	0	0%	24	2%	368	26%	500	60%	214	74%	381	100%	7	0%
First Professional														
Law	0	0%	6	1%	300	59%	159	89%	36	96%	20	100%	0	0%
Grand Total	198	3%	4,980	69%	966	81%	712	91%	272	94%	443	100%	4,145	55%

Note: This table excludes students studying abroad. Percents represent cumulative percents of the school totals, except the "Under 21" column.

Source: SCHEV Fall Headcount Enrollment File.

Table 25: Fall Headcount Enrollment by Level, Ethnic Origin, and Gender, 1997

Level	Ethnic Origin										Gender		Total
	Non-Resident Alien	African American	American Native	Asian	Hispanic	White	Men	Women					
Freshmen	Count	22	65	4	85	53	1,159	555	833	1,388			
	Percent	2%	5%	0%	6%	4%	84%	40%	60%				
Sophomore	Count	12	79	2	82	29	1,147	537	814	1,351			
	Percent	1%	6%	0%	6%	2%	85%	40%	60%				
Junior	Count	17	71	3	108	33	1,166	552	846	1,398			
	Percent	1%	5%	0%	8%	2%	83%	39%	61%				
Senior	Count	22	81	4	120	24	1,114	574	791	1,365			
	Percent	2%	6%	0%	9%	2%	82%	42%	58%				
Law - First Professional	Count	4	78	3	17	7	412	283	238	521			
	Percent	1%	15%	1%	3%	1%	79%	54%	46%				
Law - Graduate	Count	5	0	0	0	0	1	3	3	6			
	Percent	83%	0%	0%	0%	0%	17%	50%	50%				
Graduate Master	Count	32	37	3	28	19	728	457	390	847			
	Percent	4%	4%	0%	3%	2%	86%	54%	46%				
Advanced Graduate	Count	44	30	1	10	8	327	199	221	420			
	Percent	10%	7%	0%	2%	2%	78%	47%	53%				
Unclassified Undergraduate	Count	1	4	0	3	2	51	20	41	61			
	Percent	2%	7%	0%	5%	3%	84%	33%	67%				
Unclassified Graduate	Count	14	15	0	4	1	180	67	147	214			
	Percent	7%	7%	0%	2%	0%	84%	31%	69%				
Total	Count	173	460	20	457	176	6,285	3,247	4,324	7,571			
	Percent	2%	6%	0%	6%	2%	83%	43%	57%				

Note: This table excludes students studying abroad.

Source: SCHEV Fall 1997 Headcount File.

Table 26: Fall Headcount Enrollment by School, Ethnic Origin, and Gender, 1997

School/Level	Ethnic Origin										Gender		Total
	Non-Resident Alien	African American	American Native	Asian	Hispanic	White	Men	Women					
Arts and Sciences Undergraduate	Count	62	280	13	341	131	4,289	2,022	3,094	5,116			
	Percent	1%	5%	0%	7%	3%	84%	40%	60%				
Graduate	Count	54	25	2	10	6	291	215	173	388			
	Percent	14%	6%	1%	3%	2%	75%	55%	45%				
Business Undergraduate	Count	11	16	0	54	8	297	196	190	386			
	Percent	3%	4%	0%	14%	2%	77%	51%	49%				
Graduate	Count	13	7	1	12	7	350	290	100	390			
	Percent	3%	2%	0%	3%	2%	90%	74%	26%				
Education Graduate	Count	1	32	1	11	9	315	83	286	369			
	Percent	0%	9%	0%	3%	2%	85%	22%	78%				
Law 1st-Professional	Count	4	78	3	17	7	412	283	238	521			
	Percent	1%	15%	1%	3%	1%	79%	54%	46%				
Graduate	Count	5	0	0	0	0	1	3	3	6			
	Percent	83%	0%	0%	0%	0%	17%	50%	50%				
Marine Science Graduate	Count	8	3	0	5	5	99	68	52	120			
	Percent	7%	3%	0%	4%	4%	83%	57%	43%				
Unclassified Undergraduate	Count	1	4	0	3	2	51	20	41	61			
	Percent	2%	7%	0%	5%	3%	84%	33%	67%				
Graduate	Count	14	15	0	4	1	180	67	147	214			
	Percent	7%	7%	0%	2%	0%	84%	31%	69%				
Total	Count	74	300	13	398	141	4,637	2,238	3,325	5,563			
	Percent	1%	5%	0%	7%	3%	83%	40%	60%				
1st-Professional	Count	4	78	3	17	7	412	283	238	521			
	Percent	1%	15%	1%	3%	1%	79%	54%	46%				
Graduate	Count	95	82	4	42	28	1,236	726	761	1,487			
	Percent	6%	6%	0%	3%	2%	83%	49%	51%				

Note: This table excludes students studying abroad.

Source: SCHEV Fall 1997 Headcount File.