



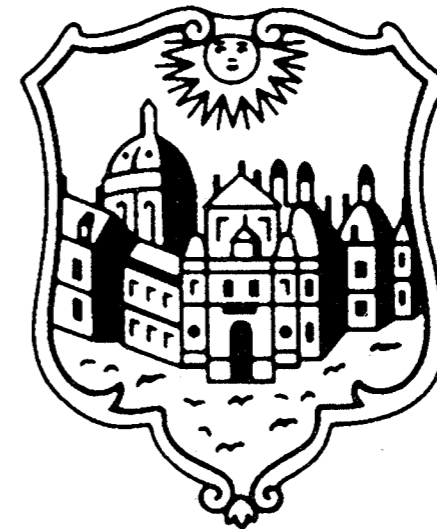
The College of William and Mary



University Databook
1998-99

1998-99

THE COLLEGE OF WILLIAM AND MARY
University Databook



OFFICE OF INSTITUTIONAL RESEARCH
THE COLLEGE OF WILLIAM AND MARY
P.O. Box 8795
WILLIAMSBURG, VIRGINIA 23187-8795



CHARTERED 1693

THE COLLEGE OF WILLIAM AND MARY IN VIRGINIA
OFFICE OF INSTITUTIONAL RESEARCH

POST OFFICE BOX 8795
WILLIAMSBURG VIRGINIA 23187-8795

FAX 757-221-2749

May 14, 1999

The *University Databook*, published annually by the Office of Institutional Research, is designed to provide the most frequently requested information about the College of William and Mary, using data from a wide variety of sources.

Information in the *Databook* is presented in tabular or graphic form, and occasionally in both formats. The aim is to present the information in the clearest, most useful manner. Suggestions based on actual use of the *Databook* are welcome, although space limitations do affect the amount and depth of information presented.

The information found in the *Databook* comes from the College's computerized databases, and certain offices of the College (please note citations on the tables and graphs). The cooperation of those offices is greatly appreciated.

The information in the *Databook* can be found on the World Wide Web at:

<http://www.wm.edu/institresearch/index.htm>.

Office of Institutional Research

Lorne Kuffel
Director
757-221-2144
lorne@wm.edu

Daina P. Henry
Assistant Director
757-221-2571
dphenr@wm.edu

John M. Clayton
Research Analyst
757-221-2147
jmclay@wm.edu

TABLE OF CONTENTS

Mission Statement v

LIST OF TABLES

TABLE		PAGE
<i>History and Organization</i>		
1.	History of Earned Degrees Currently Offered	1
2.	Chancellors of the College	2
3.	Presidents of the College	3
4.	Administrative Organization, 1998-99	4
<i>Admissions</i>		
5.	First-Time Freshman and Transfer Applications, Offers, and Accepts, Fall 1989 - Fall 1998	5
6.	First-Time Freshman Statistical Admission Characteristics, Fall 1994 - Fall 1998	6
7.	First-Time Freshmen by Geographic Origin, Fall 1994 - Fall 1998	7
8.	Admissions to the Graduate and First Professional Schools, 1994 - 1998	8
9.	Graduate and First Professional Statistical Admission Characteristics, 1994 - 1998	9
<i>Enrollment</i>		
10.	Fall Headcount Enrollment by School, 1989 - 1998 (Table)	10
11.	Fall Headcount Enrollment, 1989 - 1998 (Graph)	11
12.	Summer Session Headcount Enrollment by School, 1992 - 1998	12
13.	Fall Headcount Enrollment of Virginia Residents, 1994 - 1998 (Table)	13
14.	Fall Semester Percent of Virginia Residents by School, 1994 - 1998 (Graph)	14
15.	Fall Headcount Enrollment by State, 1992 - 1998 (Table)	15
16.	Fall Headcount Enrollment by State, 1998 (Map)	17

TABLE	PAGE
17. Fall Headcount Enrollment of Virginia Residents by City or County, 1995 - 1998 (Table)	18
18. Fall Headcount Enrollment of Virginia Residents, 1998 (Map)	21
19. Fall Headcount Enrollment by Race and Ethnicity, 1998	22
20. Fall Headcount Enrollment of African American Students, 1994 - 1998	23
21. Fall Headcount Enrollment of Female Students, 1994 - 1998	24
22. Fall Headcount Enrollment by Full-Time/Part-Time Status, 1994 - 1998	25
23. Fall Headcount Enrollment of Undergraduate Students by School and Academic Level, 1994 - 1998	26
24. Fall Headcount Enrollment by Age, 1998	27
25. Students Studying Abroad, Fall 1995 through Fall 1998	28
26. Fall Headcount Enrollment by Level, Full-time/Part-Time Status, and Domicile, 1998	29
27. Fall Headcount Enrollment by School, Full-time/Part-Time Status, and Domicile, 1998	30
28. Fall Headcount Enrollment by Level, Race and Ethnicity, and Gender, 1998	31
29. Fall Headcount Enrollment by School, Race and Ethnicity, and Gender, 1998	32
30. Fall Headcount Enrollment by School, Degree Level, and Major, 1994 - 1998	33
31. FTE Students by Department and Course Level, Fiscal Years 1994-95 through 1997-98	35
Academic Progress of Undergraduate Students	
32. Mean Cumulative Quality Point Averages of Undergraduate Students, 1994-95 through 1997-98	38
33. Graduation and Retention Rates for First-Time Freshmen, Classes Entering Fall 1989 through Fall 1997	39
34. Dean's List of Distinguished Students in the Undergraduate Schools	40
Degrees	
35. Approved Degree Programs, 1998-99	41
36. Distributions of Degrees Conferred by School, Degree Level, and Major, 1993-94 through 1997-98 (Table)	42
37. Degrees Conferred by Level, 1993-94 through 1997-98 (Chart)	44

TABLE	PAGE
Alumni	
38. Distribution of Alumni by Current State of Residence, Fall 1998	45
Tuition and Fees	
39. Full-time Student Costs for an Academic Year (Two Semesters), 1996-97 through 1998-99	46
Financial Aid	
40. Major Federal, State, and Institutional Need-Based Student Aid Program Expenditures for Undergraduates, 1994-95 through 1997-98	47
Housing	
41. Student Housing, Fall 1995 through Fall 1998	49
42. Housing Facilities	49
Faculty and Staff	
43. Salaried Workforce by Race, Ethnicity, and Gender, Fall 1998	50
44. Salaried Workforce by Major Organizational Unit, Fall 1998	51
45. Instructional and Research Faculty by Race, Ethnicity, and School, Fall 1998	53
46. Instructional and Research Faculty by Gender and School, Fall 1998	54
47. Instructional and Research Faculty by Rank and School, Fall 1998	55
48. Tenured Full-Time Instructional and Research Faculty by Race, Ethnicity, Gender, and School, Fall 1998	56
49. Full-Time Instructional and Research Faculty by Tenure Status and School, Fall 1998	57
50. Full-Time Instructional and Research Faculty by Degree Status and School, Fall 1998	58
51. Instructional and Research Faculty by School, Full-Time/Part-Time Status, and Age, Fall 1998	59
52. Average Salary of Full-Time Instructional and Research Faculty by Rank	60
53. Average Compensation of Full-Time Instructional and Research Faculty by Rank	61
Finance	
54. Income of the College, 1988-89 through 1997-98	62
55. Consolidated Income of the College, 1988-89 through 1997-98	63

TABLE	PAGE
56. Expenditures of the College, 1988-89 through 1997-98	64
57. Consolidated Expenditures of the College, 1988-89 through 1997-98	65
58. Market Value of the Endowments, 1985-86 through 1997-98	66
59. Gift Support, 1988-89 through 1997-98	67
60. Capital Construction and Renovation Since 1991-92	68
61. Investment in the Physical Plant, 1988-89 through 1997-98	69
62. Sponsored Program Award Summary by School and Grantor, 1997-98	70
<i>Libraries</i>	
63. Size of Collections of the Libraries, 1993-94 through 1997-98	71
<i>Facilities</i>	
64. Facilities by Completion Period (Table)	72
65. Gross Square Footage of Facilities by Completion Period (Chart)	73
66. Net Square Footage of Facilities by Functional Category, as of October 1, 1998	74
67. Land Holdings	75
<i>Peer Institutions</i>	
68. Location of the Peer Institutions (Map)	76
69. Selected Admission Characteristics of the Peer Institutions, Fall 1997	77
70. Fall Headcount Enrollment of the Peer Institutions, 1997	78
71. Fall Headcount Enrollment of the Peer Institutions by Gender, 1997	79
72. Fall Headcount Enrollment of the Peer Institutions by Full-Time/Part-Time Status, 1997	80
73. Retention and Graduation Rates of the Peer Institutions	81
74. Faculty Salaries, Alumni Giving, and Endowments of the Peer Institutions	82

Mission Statement

The College of William and Mary, a public university in Williamsburg, Virginia, is the second-oldest institution of higher learning in the United States. Established in 1693 by British royal charter, William and Mary is proud of its role as the Alma Mater of generations of American patriots, leaders, and public servants. Now, in its fourth century, it continues this tradition of excellence by combining the best features of an undergraduate college with the opportunities offered by a modern research university. Its moderate size, dedicated faculty, and distinctive history give William and Mary a unique character among public institutions, and create a learning environment that fosters close interaction among students and teachers.

The university's predominantly residential undergraduate program provides a broad liberal education in a stimulating academic environment enhanced by a talented and diverse student body. This nationally acclaimed undergraduate program is integrated with selected graduate and professional programs in five faculties -- Arts and Sciences, Business, Education, Law, and Marine Science. Masters and doctoral programs in the humanities, the sciences, the social sciences, business, education, and law provide a wide variety of intellectual opportunities for students at both graduate and undergraduate levels.

At William and Mary, teaching, research, and public service are linked through programs designed to preserve, transmit, and expand knowledge. Effective teaching imparts knowledge and encourages the intellectual development of both student and teacher. Quality research supports the educational program by introducing students to the challenge and excitement of original discovery, and is a source of the knowledge and understanding needed for a better society. The university recognizes its special responsibility to the citizens of Virginia through public and community service to the Commonwealth as well as to national and international communities. Teaching, research, and public service are all integral parts of the mission of William and Mary.

Goals

In fulfilling its mission, William and Mary adopts the following specific goals:

- to attract outstanding students from diverse backgrounds;
- to develop a diverse faculty which is nationally and internationally recognized for excellence in both teaching and research;
- to provide a challenging undergraduate program with a liberal arts and sciences curriculum that encourages creativity, independent thought, and intellectual depth, breadth, and curiosity;
- to offer high quality graduate and professional programs that prepare students for intellectual, professional, and public leadership;
- to instill in its students an appreciation for the human condition, a concern for the public well-being, and a life-long commitment to learning; and
- to use the scholarship and skills of its faculty and students to further human knowledge and understanding, and to address specific problems confronting the Commonwealth of Virginia, the nation, and the world.

Source: *Into the Fourth Century: A Plan for the Future of the College of William and Mary* (1994).

Table 1: History of Earned Degrees Currently Offered

<u>Degree</u>	<u>Authorized by Board of Visitors</u>	<u>Year of First Earned Degree</u>	<u>Degree Offered</u>
Bachelor of Arts	1792	1772 *	A. B.
Master of Arts	1792	1824	M. A.
Bachelor of Science	1906	1908	B. S.
Master of Education	1948	1947	M. Ed.
Master of Arts in Education	1948	1962	M. A. Ed.
Master of Science	1957	1966	M. S.
Doctor of Philosophy	1964	1967	Ph. D.
Doctor of Education	1966	1972	Ed. D.
Master of Business Administration	1966	1968	M. B. A.
Juris Doctor	1967	1968	J. D.
Master of Law	1967	1971	L. L. M.
Bachelor of Business Administration	1971	1973	B. B. A.

* The original A. B. degree was the result of the efforts of Lord Botetourt, colonial governor of Virginia, to stimulate students to complete the examinations for the degree of bachelor of arts. In 1792, after the American Revolution, the Board of Visitors established explicit requirements for the bachelor of arts, as well as the bachelor of law degree. Certain bachelors degrees are now identified as B. A. degrees.

Note: At certain times in its history, the College has offered earned degrees including Bachelor of Chemistry (B. C.), Bachelor of Civil Law (B. C. L.), Bachelor of Law (B. L.), Bachelor of Philosophy, Certificate of Advanced Graduate Studies in Education (C. A. G. S.), Doctor of Laws - Science (J. S. D.), Licentiate of Instruction (L. I.), Master of Arts in Teaching (M. A. T.), Master of Law and Taxation (M. L. T.), Master of Taxation (M. T.), Master of Teaching in Science (M. T. S.), and Doctor of Law (LL. D.). In addition, honorary degrees including Doctor of Fine Arts (A. E. D.), Doctor of Arts (D. A.), Doctor of Divinity (D. D.), Doctor of Laws (LL. D.), Bachelor of Laws (B. L.), Doctor of Humane Letters (L. H. D.), Doctor of Literature (Litt. D.), Doctor of Taxation and Law (L. T. D.), and Doctor of Science (Sc. D.) have been awarded.

Source: *The College of William and Mary: A History; Vital Facts: A Chronology of the College of William and Mary*; University Archives.

Table 2: Chancellors of the College

Name	Title	Years Served
Henry Compton	Bishop of London	1693 - 1700
Thomas Tenison	Archbishop of Canterbury	1700 - 1707
Henry Compton	Bishop of London	1707 - 1713
John Robinson	Bishop of London	1714 - 1721
William Wake	Archbishop of Canterbury	1721 - 1729
Edmund Gibson	Bishop of London	1729 - 1736
William Wake	Archbishop of Canterbury	1736 - 1737
Edmund Gibson	Bishop of London	1737 - 1748
Thomas Sherlock	Bishop of London	1749 - 1761
Thomas Hayter	Bishop of London	1762 - 1763
Charles Wyndham	Earl of Egremont	1764 - 1764
Philip Yorke	Earl of Harwick	1764 - 1764
Richard Terrick	Bishop of London	1764 - 1776
George Washington	First President of the United States	1788 - 1799
John Tyler	Tenth President of the United States	1859 - 1862
Hugh Blair Grigsby	Historian	1871 - 1881
John Stewart Bryan	Nineteenth President of the College	1942 - 1944
Colgate W. Darden, Jr.	Governor of Virginia	1946 - 1947
Alvin Duke Chandler	Twenty-first President of the College	1962 - 1974
Warren E. Burger	Fifteenth Chief Justice of the United States	1986 - 1993
Margaret Thatcher	Former Prime Minister of Great Britain	1993 - 1993

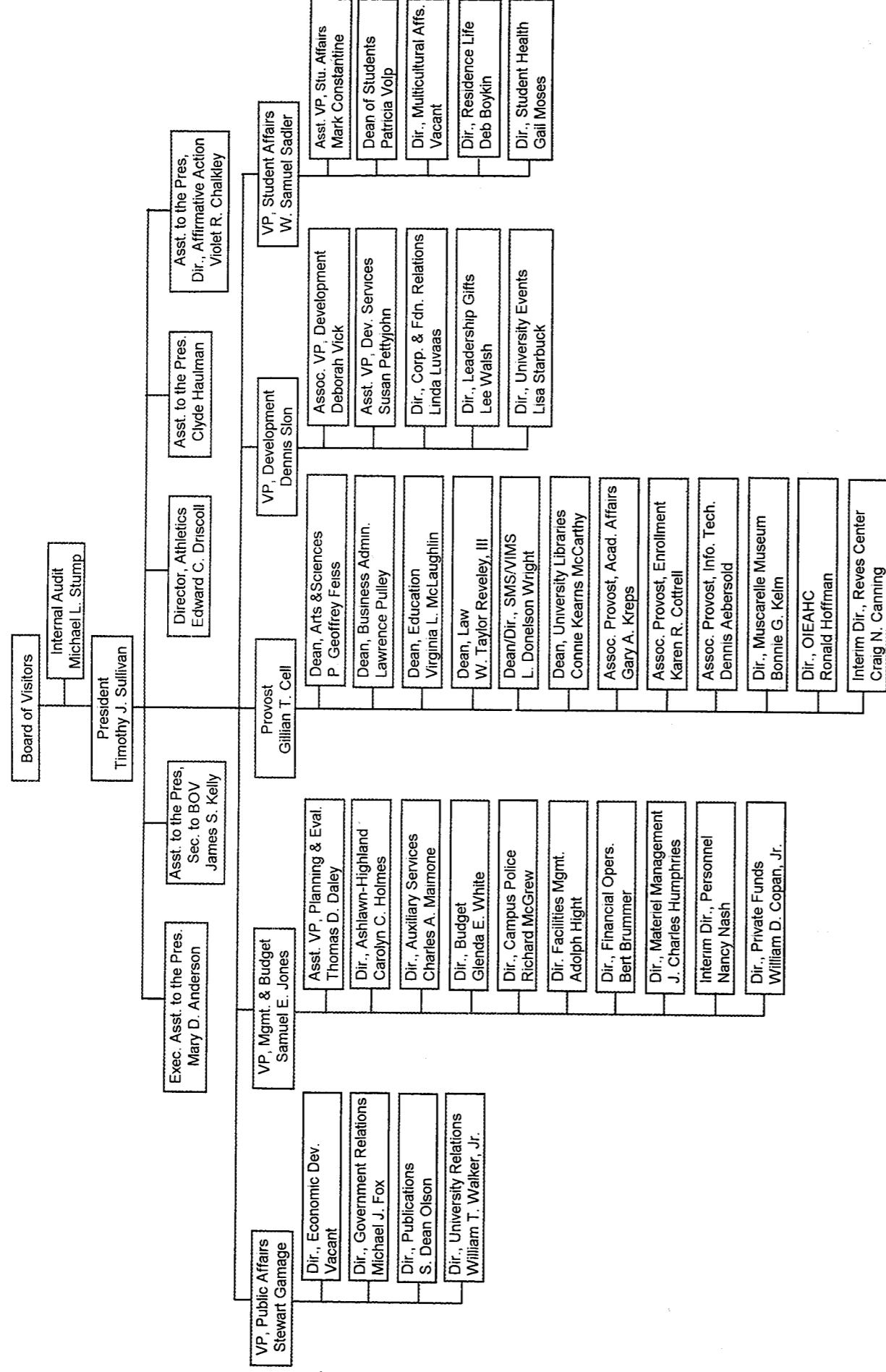
Table 3: Presidents of the College

Name	Years Served
James Blair	1693 - 1743
William Dawson	1743 - 1752
William Stith	1752 - 1755
Thomas Dawson	1755 - 1760
William Yates	1761 - 1764
James Horrocks	1764 - 1771
John Camm	1771 - 1777
James Madison	1777 - 1812
John Bracken	1812 - 1814
John Augustine Smith	1814 - 1826
William H. Wilmer	1826 - 1827
Adam Empie	1827 - 1836
Thomas Roderick Dew	1836 - 1846
Robert Saunders	1847 - 1848
John Johns	1849 - 1854
Benjamin S. Ewell	1854 - 1888
Lyon G. Tyler	1888 - 1919
Julian A. C. Chandler	1919 - 1934
John Stewart Bryan	1934 - 1942
John Edwin Pomfret	1942 - 1951
Alvin Duke Chandler	1951 - 1960
Davis Young Paschall	1960 - 1971
Thomas Ashley Graves, Jr.	1971 - 1985
Paul Robert Verkuil	1985 - 1992
Timothy Jackson Sullivan	1992 -

Source: Vital Facts: A Chronology of the College of William and Mary.

Source: Vital Facts: A Chronology of the College of William and Mary.

Table 4: Administrative Organization, 1998-99



Note: Organizational structure as of March 11, 1999.

Source: Provost's Office

Table 5: First-Time Freshman and Transfer Applications, Offers, and Accepts
Fall 1989 - Fall 1998

	1989	1990	1991	1992	1993	1994	1995	1996	1997	1998
First-Time Freshmen										
Total Applications	9,478	7,877	8,140	8,274	7,916	8,169	7,946	7,420	7,200	7,616
Completed Applications	9,446	6,551	7,125	7,222	7,448	7,797	6,804	7,079	6,599	6,831
Offers Made	2,538	2,881	2,878	2,997	3,101	3,118	3,335	3,232	3,033	3,084
Offer Rate	27%	37%	35%	36%	39%	38%	42%	44%	42%	40%
Offers Accepted	1,266	1,235	1,221	1,215	1,211	1,253	1,373	1,333	1,331	1,292
Yield	50%	43%	42%	41%	39%	40%	41%	41%	44%	42%
Transfers										
Total Applications	921	850	807	634	667	656	623	580	529	525
Completed Applications	885	652	637	581	510	656	582	580	514	478
Offers Made	179	248	191	285	247	328	323	348	297	256
Offer Rate	19%	29%	24%	45%	37%	50%	52%	60%	56%	49%
Offers Accepted	99	146	111	193	172	203	187	179	147	144
Yield	55%	59%	58%	68%	70%	62%	58%	51%	49%	56%

Note: Offer rate represents "Offers Made" as a percent of "Total Applications." Yield rate represents "Offers Accepted" as a percent of "Offers Made."

Source: SCHEV B8, Admission Profiles (total application data), Office of Admission.

**Table 6: First-Time Freshman Statistical Admission Characteristics
Fall 1994 - Fall 1998**

	SAT Scores			
	Non-Recenters		Recenters	
	1994	1995	1996	1997
Total				1998
Ninetieth Percentile	1410	1440	1440	1440
Top Quartile (75%)	1330	1380	1380	1400
Median (50%)	1240	1300	1310	1320
Bottom Quartile (25%)	1130	1220	1210	1230
Tenth Percentile	1050	1140	1130	1140
Mean	1227	1295	1295	1309
Verbal				
Ninetieth Percentile	690	750	750	760
Top Quartile (75%)	650	710	710	710
Median (50%)	590	670	660	670
Bottom Quartile (25%)	540	600	600	610
Tenth Percentile	480	560	560	570
Mean	591	657	656	661
Mathematics				
Ninetieth Percentile	730	730	720	730
Top Quartile (75%)	690	680	690	690
Median (50%)	640	650	640	650
Bottom Quartile (25%)	580	600	600	600
Tenth Percentile	540	560	550	560
Mean	636	638	639	648

	High School Decile Rank					
	1994		1995		1996	
	Count	Percent	Count	Percent	Count	Percent
Top Tenth	645	70%	680	72%	655	74%
Second Tenth	191	21%	170	18%	163	18%
Second Fifth	71	8%	79	8%	58	7%
Bottom Three-fifths	16	2%	11	1%	11	1%
Unranked	329		433		446	
					422	
					410	

Note: SAT scores were recentered in 1995, which caused the scores, especially verbal, to increase. Thus, scores reported for 1994 are not comparable to scores reported for later years. Transfer students are excluded. Percentages exclude students not reporting a rank (unranked).

**Table 7: First-Time Freshmen by Geographic Origin
Fall 1994 - Fall 1998**

	1994		1995		1996		1997		1998	
	Count	Percent	Count	Percent	Count	Percent	Count	Percent	Count	Percent
	Virginia	833	67%	913	66%	863	65%	870	65%	790
Mid-Atlantic	195	16%	235	17%	235	18%	221	17%	240	19%
South	50	4%	59	4%	67	5%	62	5%	64	5%
New England	66	5%	57	4%	62	5%	68	5%	68	5%
Midwest	48	4%	41	3%	48	4%	54	4%	49	4%
Far West	17	1%	28	2%	28	2%	21	2%	48	4%
Unknown	17	1%	9	1%	11	1%	13	1%	1	0%
U.S. Territories	2	0%	4	0%	1	0%	0	0%	14	1%
Foreign Countries	24	2%	27	2%	18	1%	22	2%	18	1%
Grand Total	1,252		1,373		1,333		1,331		1,292	

Note: Far West: AK, AZ, CA, CO, HI, ID, NV, NM, OR, UT, WA, WY; Mid-Atlantic: DC, DE, MD, NJ, NY, PA, WV; Midwest: IL, IN, IA, KS, MI, MN, MO, MT, ND, NE, OH, OK, SD, WI; New England: CT, ME, MA, NH, RI, VT; South: AL, AR, FL, GA, KY, LA, MS, NC, SC, TN, TX. Not all states are represented in a given year.

Source: SCHEV Admission Files.

Table 8: Admissions to the Graduate and First Professional Schools, 1994 - 1998

	1994		1995		1996		1997		1998	
	Count	Percent	Count	Percent	Count	Percent	Count	Percent	Count	Percent
Arts and Sciences										
Total Applications	1,254		985		961		851		756	
Offers Made	334	27% *	344	35%	320	33%	337	40%	306	40%
Offers Accepted	158	47% **	183	53%	146	46%	150	45%	152	50%
Education										
Total Applications	443		575		420		419		364	
Offers Made	293	66%	343	60%	210	50%	279	67%	255	70%
Offers Accepted	211	72%	224	65%	137	65%	156	56%	134	53%
Graduate Business - MBA Programs										
Total Applications	408		449		418		488		469	
Offers Made	280	69%	279	62%	234	56%	299	61%	321	68%
Offers Accepted	148	53%	171	61%	111	47%	174	58%	183	57%
Graduate Business - Executive MBA										
Total Applications	37		42		42		43		36	
Offers Made	34	92%	42	100%	42	100%	42	98%	36	100%
Offers Accepted	34	100%	41	98%	38	90%	38	90%	36	100%
Law										
Total Applications	3,323		3,037		2,662		2,364		2,192	
Offers Made	702	21%	737	24%	793	30%	723	31%	757	35%
Offers Accepted	189	27%	197	27%	204	26%	181	25%	177	23%
Marine Science										
Total Applications	291		215		241		218		177	
Offers Made	68	23%	56	26%	49	20%	50	23%	43	24%
Offers Accepted	37	54%	27	48%	32	65%	27	54%	27	63%

* Represents "Offers Made" as a percent of "Total Applications" (offer rate).

** Represents "Offers Accepted" as a percent of "Offers Made" (yield rate).

Note: An admission year includes the three terms in a calendar year: spring, summer, and fall. Unclassified students are excluded. All applications from those who apply to more than one school or department are counted. Masters programs in English, Government, Mathematics, and Sociology were phased out through implementation of the strategic plan, explained in *Into the Fourth Century: A Plan for the Future of the College of William and Mary* (1994). The plan implementation also restructured graduate programs in the School of Education. Results of the restructuring are reflected beginning with 1995.

Table 9: Graduate and First Professional Statistical Admission Characteristics 1994 - 1998

	1994	1995	1996	1997	1998
	Arts and Sciences				
Mean GRE Verbal	591	571	594	578	560
Mean GRE Mathematics	613	621	649	625	637
Mean GRE Analytical	639	642	664	640	651
Mean Undergraduate GPA	3.30	3.33	3.42	3.42	3.34
Education					
Mean GRE Verbal	548	533	546	535	503
Mean GRE Mathematics	553	563	589	581	561
Mean GRE Analytical	610	596	626	615	596
Mean MAT	57	58	59	57	58
Mean Undergraduate GPA	3.27	3.31	3.32	3.21	3.17
Business Administration					
GMAT	580	595	605	620	630
Mean Undergraduate GPA	3.10	3.20	3.20	3.30	3.21
Law					
LSAT	164	163	163	162	161
Mean Undergraduate GPA	3.43	3.39	3.36	3.30	3.25
Marine Science					
Mean GRE Verbal	606	595	590	620	596
Mean GRE Mathematics	680	656	645	662	677
Mean GRE Analytical	695	667	626	695	641
Mean Undergraduate GPA	3.41	3.40	3.44	3.40	3.50

Note: The range of possible scores for the GRE and the GMAT is 200 to 800. The range of possible scores for the LSAT is 120 to 180. The range of possible scores for the MAT is 0 to 100. Mean undergraduate GPAs are reported on a 4.00 scale.

Source: Office of Institutional Research, School of Business Administration, School of Law.

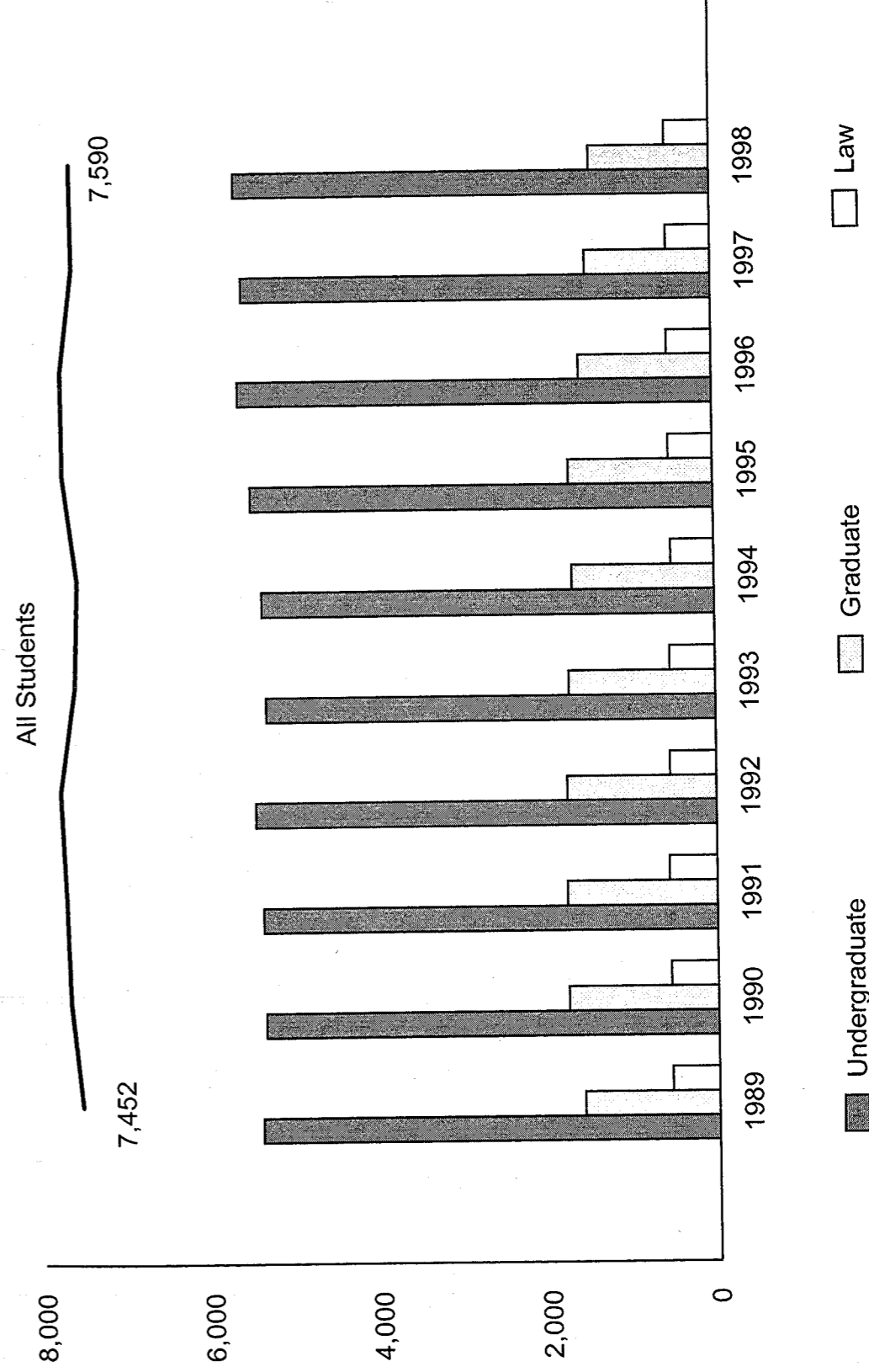
Table 10: Fall Headcount Enrollment by School, 1989 - 1998

	1989	1990	1991	1992	1993	1994	1995	1996	1997	1998
Undergraduate										
Arts and Sciences	4,799	4,882	4,909	5,027	4,917	4,933	5,061	5,170	5,116	5,146
Business	429	363	357	308	297	319	304	319	386	396
Education	58	35	3	0	0	0	0	0	0	0
Unclassified	118	76	107	121	106	107	115	129	61	100
Total Undergraduate	5,404	5,356	5,376	5,456	5,320	5,359	5,480	5,618	5,563	5,642
Graduate										
Arts and Sciences	317	369	396	457	463	450	470	430	388	381
Business	367	430	435	411	340	353	386	373	390	413
Education	492	519	489	505	535	511	489	426	369	328
Graduate Law	30	38	32	22	7	9	18	3	6	4
Marine Science	102	107	113	112	124	129	125	122	120	127
Unclassified	282	301	307	258	262	228	219	220	214	169
Total Graduate	1,590	1,764	1,772	1,765	1,731	1,680	1,707	1,574	1,487	1,422
First Professional										
Law	548	552	562	545	535	508	522	530	521	526
Grand Total	7,542	7,672	7,710	7,766	7,586	7,547	7,709	7,722	7,571	7,590

Note: Students studying abroad are included from 1992 through 1996. See table 25 for information concerning students studying abroad. Beginning in fall 1991, undergraduates seeking teaching certifications in education were counted with Arts and Sciences, because such students were required to declare primary concentrations in Arts and Sciences. Masters programs in English, Government, Mathematics, and Sociology were phased out through implementation of the strategic plan, explained in *Into the Fourth Century: A Plan for the Future of the College of William and Mary* (1994). The plan implementation also restructured graduate programs in the School of Education. Results of the restructuring are reflected beginning with 1995.

Source: SCHEV Fall Headcount Enrollment File

Table 11: Fall Headcount Enrollment 1989 - 1998



Note: Students studying abroad are included from 1992 through 1996.
Source: SCHEV Fall Headcount Enrollment File.

**Table 12: Summer Session Headcount Enrollment by School
1992 - 1998**

	1992	1993	1994	1995	1996	1997	1998
Undergraduate							
Arts and Sciences	758	686	644	609	636	577	630
Business	61	61	49	56	49	36	46
Unclassified	221	198	204	91	102	124	120
Total Undergraduate	1,040	945	897	756	787	737	796
Graduate							
Arts and Sciences	38	32	25	117	123	88	54
Business	215	179	174	182	200	216	210
Education	345	385	341	364	291	249	241
Graduate Law	0	2	0	2	1	1	0
Marine Science	93	97	104	108	103	101	121
Unclassified	344	293	303	319	309	231	88
Total Graduate	1,035	988	947	1,092	1,027	886	714
First Professional							
Law	108	80	54	71	61	93	123
Grand Total	2,183	2,013	1,898	1,919	1,875	1,716	1,633

Source: SCHEV Summer Headcount Enrollment File

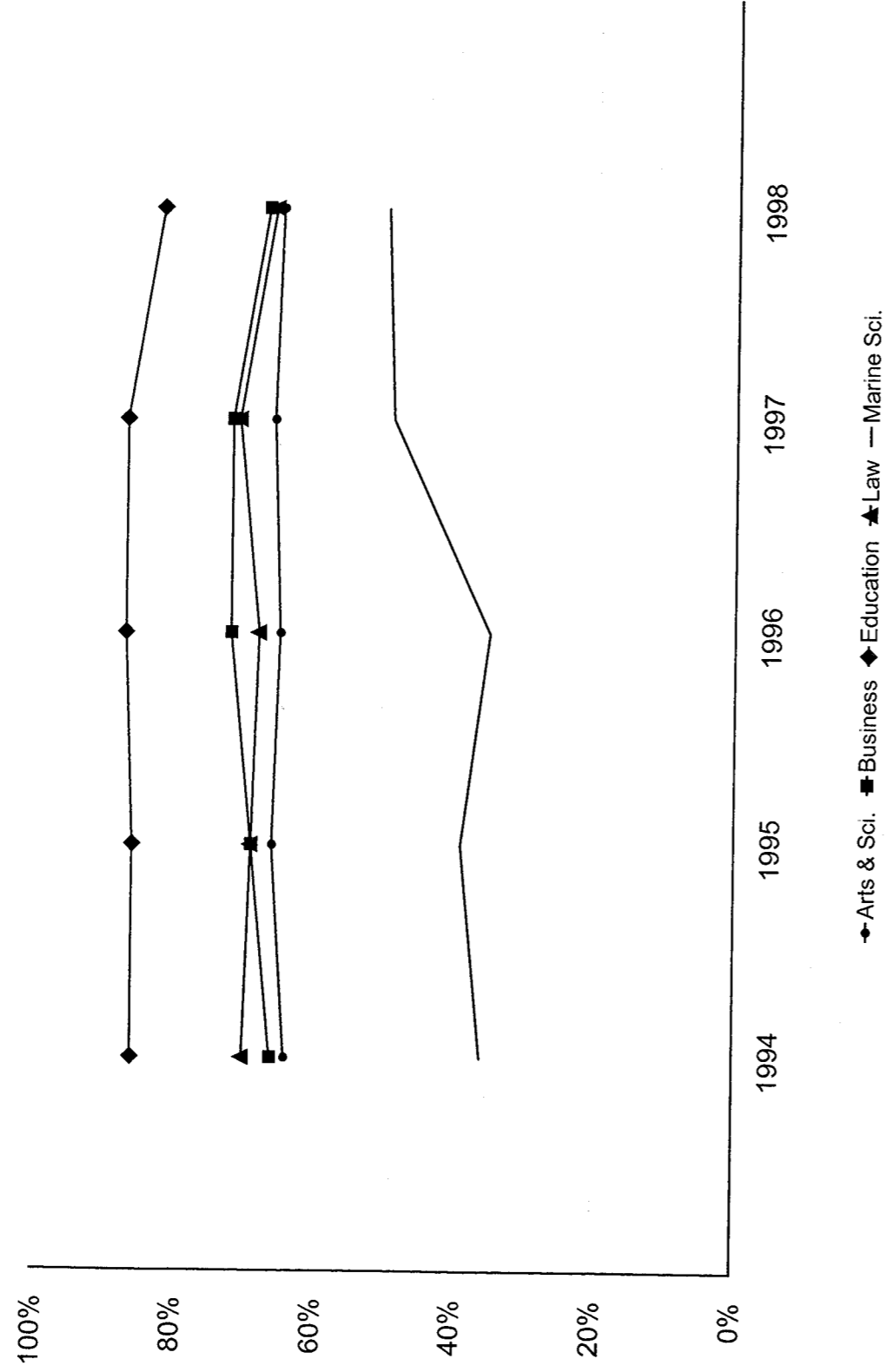
Table 13: Fall Headcount Enrollment of Virginia Residents, 1994 - 1998

	1994		1995		1996		1997		1998	
Undergraduate	Count	Percent	Count	Percent	Count	Percent	Count	Percent	Count	Percent
Arts and Sciences	3,256	66%	3,425	68%	3,464	67%	3,463	68%	3,421	66%
Business	193	61%	184	61%	206	65%	249	65%	240	61%
Unclassified	72	67%	86	75%	87	67%	54	89%	77	77%
Total Undergraduate	3,521	66%	3,695	67%	3,757	67%	3,766	68%	3,738	66%
Graduate										
Arts and Sciences	180	40%	198	42%	188	44%	173	45%	166	44%
Business	251	71%	293	76%	294	79%	309	79%	299	72%
Education	442	86%	421	86%	370	87%	322	87%	269	82%
Graduate Law	2	22%	8	44%	0	0%	0	0%	0	0%
Marine Science	46	36%	49	39%	43	35%	59	49%	64	50%
Unclassified	181	79%	161	74%	173	79%	149	70%	128	76%
Total Graduate	1,102	66%	1,130	66%	1,068	68%	1,012	68%	926	65%
First Professional										
Law	361	71%	366	70%	365	69%	375	72%	349	66%
Grand Total	4,984	66%	5,191	67%	5,190	67%	5,153	68%	5,013	66%

Note: Percentages refer to percents of school totals. Students studying abroad are included from 1994 through 1996. See table 25 for information concerning students studying abroad. Masters programs in English, Government, Mathematics, and Sociology were phased out through implementation of the strategic plan, explained in *Into the Fourth Century: A Plan for the Future of the College of William and Mary* (1994). The plan implementation also restructured graduate programs in programs in the School of Education. Results of the restructuring are reflected beginning with 1995.

Source: SCHEV Fall Headcount Enrollment File.

Table 14: Fall Semester Percent of Virginia Residents by School, 1994 - 1998



Note: Unclassified students are excluded. Students studying abroad are included from 1994 through 1996.

Table 15: Fall Headcount Enrollment by State, 1992 - 1998

	1992	1993	1994	1995	1996	1997	1998
Alabama	11	8	9	6	6	5	7
Alaska	3	2	3	1	0	1	3
Arizona	9	7	7	7	6	7	10
Arkansas	2	4	1	4	4	3	3
California	58	83	74	84	68	56	74
Colorado	15	17	16	9	16	17	18
Connecticut	104	111	99	97	93	79	94
Delaware	22	23	21	25	26	30	23
District of Columbia	20	22	16	17	19	16	18
Florida	74	74	83	74	73	78	79
Georgia	57	54	58	52	52	44	43
Hawaii	3	4	0	3	3	4	6
Idaho	3	3	2	6	5	3	2
Illinois	33	50	46	52	53	50	52
Indiana	20	14	16	19	18	17	21
Iowa	8	4	5	2	4	5	6
Kansas	8	7	6	9	7	9	7
Kentucky	16	13	11	12	14	9	10
Louisiana	11	9	7	8	8	11	11
Maine	15	23	17	14	11	8	13
Maryland	172	192	182	179	175	171	172
Massachusetts	120	116	109	116	105	112	98
Michigan	24	22	21	21	18	21	16
Minnesota	20	16	9	7	7	9	11
Mississippi	7	8	4	6	7	4	5
Missouri	15	23	23	23	24	22	24
Montana	1	1	3	3	1	0	0
Nebraska	3	4	2	3	2	3	3
Nevada	1	4	1	2	3	3	4
New Hampshire	22	20	15	18	17	18	24
New Jersey	261	265	262	261	272	278	298

continued on the following page

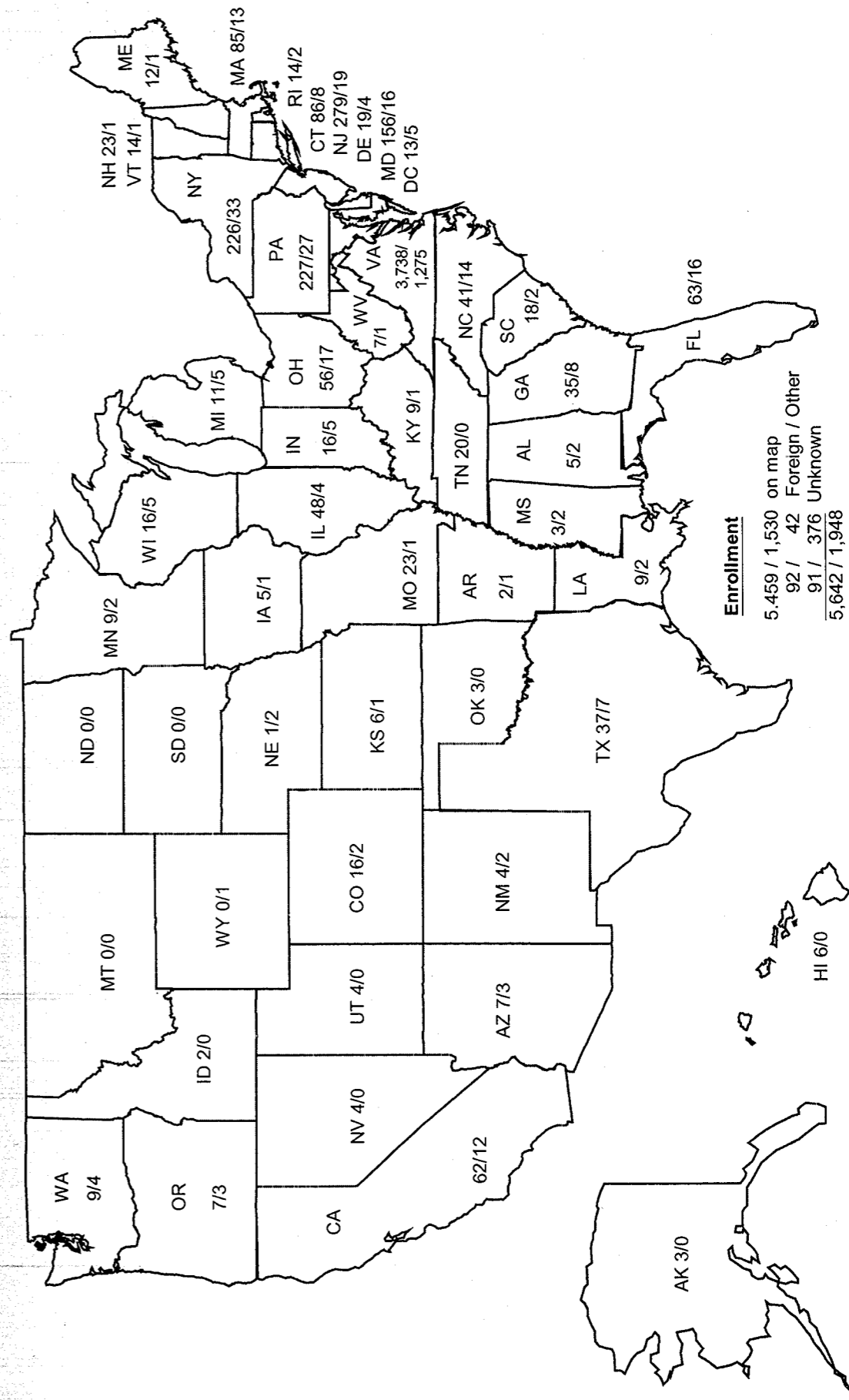
Table 15: Fall Headcount Enrollment by State, 1992 - 1998 (continued)

	1992	1993	1994	1995	1996	1997	1998
New Mexico	6	8	3	0	1	2	6
New York	227	272	296	301	294	261	259
North Carolina	59	65	61	51	52	56	55
North Dakota	4	2	1	1	0	0	0
Ohio	66	54	57	51	57	69	73
Oklahoma	3	5	4	5	4	3	3
Oregon	5	8	8	4	10	5	10
Pennsylvania	255	227	205	226	241	233	254
Rhode Island	14	13	9	11	13	16	16
South Carolina	21	19	21	22	22	15	20
Tennessee	14	19	20	24	27	23	20
Texas	44	50	39	47	40	39	44
Utah	2	6	4	4	5	3	4
Vermont	6	8	12	13	10	11	15
Virginia	5,733	5,041	4,984	5,191	5,190	5,153	5,013
Washington	13	12	12	24	13	11	13
West Virginia	10	14	13	12	12	6	8
Wisconsin	16	16	25	25	25	21	21
Wyoming	1	193	2	1	2	1	0
Unknown	4	241	493	394	442	428	467
American Territories	5	5	12	14	11	7	4
Foreign Countries	120	107	138	148	134	115	130
Grand Total	7,766	7,586	7,547	7,709	7,722	7,571	7,590

Note: Students studying abroad are included from 1992 through 1996.

Source: SCHEV Fall Headcount Enrollment File.

Table 16: Fall Headcount Enrollment by State, 1998



NOTE: Enrollments from each state follow the format "number undergraduate/number graduate and first-professional." Students studying abroad are excluded.
 SOURCE: SCHEV Headcount Enrollment File.

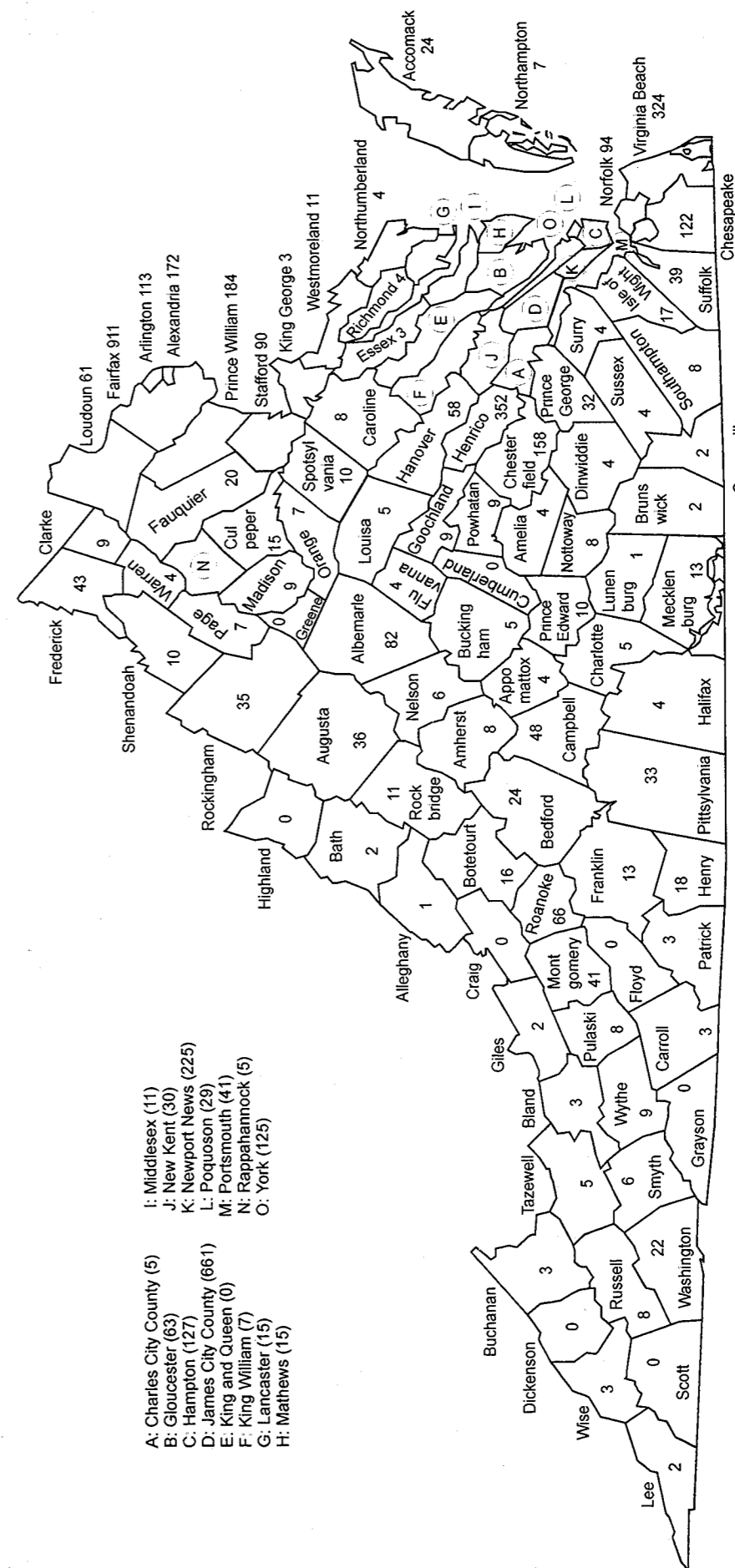
Table 17: Fall Headcount Enrollment of Virginia Residents by City or County, 1995 - 1998 (continued)

City/County	1995		1996		1997		1998	
	Under-Grad	Grad. & 1st Prof.	Under-Grad	Grad. & 1st Prof.	Under-Grad	Grad. & 1st Prof.	Under-Grad	Grad. & 1st Prof.
Prince William County	100	5	111	4	114	7	124	8
Pulaski County	13	0	11	0	6	1	7	1
Radford City	7	2	7	2	11	1	12	1
Rappahannock County	3	1	2	0	5	0	5	0
Richmond City	230	98	254	96	242	90	222	93
Richmond County	1	1	2	2	3	3	4	4
Roanoke City	65	7	62	4	63	5	43	6
Roanoke County	5	0	3	0	1	1	3	1
Rockbridge County	3	0	1	0	0	0	0	0
Rockingham County	14	1	13	0	14	0	14	1
Russell County	7	0	8	0	7	0	8	0
Salem City	14	0	15	0	12	1	12	1
Scott County	2	0	0	0	0	0	0	0
Shenandoah County	5	1	9	0	11	0	10	0
Smyth County	5	0	7	0	4	0	6	0
South Boston City	3	0	2	0	2	0	2	0
Southampton County	4	0	7	0	8	0	8	0
Spotsylvania County	11	0	9	0	7	0	10	0
Stafford County	19	1	19	3	22	2	27	2
Staunton City	6	1	9	0	8	0	11	0
Suffolk City	20	6	22	11	24	11	24	15
Surry County	3	2	2	2	2	3	3	1
Sussex County	5	1	4	1	2	1	3	1
Tazewell County	10	0	7	1	7	0	5	0
Virginia Beach City	218	87	242	83	256	72	252	72
Warren County	7	0	5	0	6	1	4	0
Washington County	13	0	12	0	15	0	16	0
Waynesboro City	10	0	8	0	10	1	12	2
Westmoreland County	7	2	8	1	10	1	10	1
Williamsburg City	276	429	258	474	242	454	247	406
Winchester City	22	1	24	0	28	1	30	4
Wise County	3	1	3	0	2	0	2	0
Wythe County	8	0	7	0	5	1	7	2
York County	41	84	46	62	44	68	57	68
Unknown	77	56	80	52	80	55	74	33
Grand Total	3,695	1,496	3,757	1,433	3,766	1,387	3,738	1,275

Note: Students studying abroad are included in 1995 and 1996.

Source: SCHEV Fall Headcount File.

Table 18: Fall Headcount Enrollment of Virginia Residents, 1998



Note: Certain cities are counted with contiguous or surrounding counties: Bedford - Bedford; Bristol - Washington; Buena Vista and Lexington - Rockbridge; Charlottesville - Albemarle; Clifton Forge and Covington - Alleghany; Colonial Heights - Chesterfield; Danville - Pittsylvania; Emporia - Greensville; Fairfax and Falls Church - Fairfax; Franklin - Franklin; Fredericksburg - Stafford; Galax - Carroll; Harrisonburg - Rockingham; Hopewell and Petersburg - Prince George; Lynchburg - Campbell; Manassas and Manassas Park - Prince William; Martinsville - Henry; Norton - Wise; Radford - Montgomery; Richmond - Henrico; Roanoke and Salem - Roanoke; South Boston - Roanoke; Staunton and Waynesboro - Augusta; Williamsburg - James City; and Winchester - Frederick. In addition, 107 in-state students have an unknown county.

Source: SCHEV Fall Headcount Enrollment File.

Table 19: Fall Headcount Enrollment by Race and Ethnicity, 1998

Undergraduate	Non-Resident Alien		African American		Native American		Asian		Hispanic		White		Total
	Count	%	Count	%	Count	%	Count	%	Count	%	Count	%	
Arts and Sciences	65	1%	237	5%	17	0%	348	7%	143	3%	4336	84%	5,146
Business	15	4%	17	4%	0	0%	41	10%	5	1%	318	80%	396
Unclassified	14	14%	1	1%	0	0%	9	9%	4	4%	72	72%	100
Total Undergraduate	94	2%	255	5%	17	0%	398	7%	152	3%	4,726	84%	5,642
Graduate													
Arts and Sciences	51	13%	26	7%	3	1%	11	3%	7	2%	283	74%	381
Business	34	8%	12	3%	1	0%	15	4%	8	2%	343	83%	413
Education	1	0%	38	12%	1	0%	6	2%	5	2%	277	84%	328
Graduate Law	4	100%	0	0%	0	0%	0	0%	0	0%	0	0%	4
Marine Science	11	9%	5	4%	0	0%	4	3%	4	3%	103	81%	127
Unclassified	4	2%	21	12%	0	0%	6	4%	3	2%	135	80%	169
Total Graduate	105	7%	102	7%	5	0%	42	3%	27	2%	1141	80%	1,422
First Professional													
Law	10	2%	76	14%	4	1%	19	4%	7	1%	410	78%	526
Grand Total	209	3%	433	6%	26	0%	459	6%	186	2%	6,277	83%	7,590

Note: This table excludes students studying abroad.

Table 20: Fall Headcount Enrollment of African American Students, 1994 - 1998

Undergraduate	1994		1995		1996		1997		1998	
	Count	Percent	Count	Percent	Count	Percent	Count	Percent	Count	Percent
Arts and Sciences	331	7%	330	7%	312	6%	280	5%	237	5%
Business	15	5%	18	6%	16	5%	16	4%	17	4%
Unclassified	2	2%	3	3%	8	6%	4	7%	1	1%
Total Undergraduate	348	6%	351	6%	336	6%	300	5%	255	5%
Graduate										
Arts and Sciences	24	5%	26	6%	24	6%	25	6%	26	7%
Business	14	4%	16	4%	12	3%	7	2%	12	3%
Education	37	7%	34	7%	33	8%	32	9%	38	12%
Graduate Law	0	0%	0	0%	0	0%	0	0%	0	0%
Marine Science	6	5%	6	5%	4	3%	3	3%	5	4%
Unclassified	22	10%	19	9%	22	10%	15	7%	21	12%
Total Graduate	103	6%	101	6%	95	6%	82	6%	102	7%
First Professional										
Law	57	11%	61	12%	72	14%	78	15%	76	14%
Grand Total	508	7%	513	7%	503	7%	460	6%	433	6%

Note: Percentages refer to percents of school totals. Students studying abroad are included from 1994 through 1996. See table 25 for information concerning students studying abroad. Masters programs in English, Government, Mathematics, and Sociology were phased out through implementation of the strategic plan, explained in *Into the Fourth Century: A Plan for the Future of the College of William and Mary* (1994). The plan implementation also restructured graduate programs in the School of Education. Results of the restructuring are reflected beginning with 1995.

Source: SCHEV Fall Headcount Enrollment File.

Table 21: Fall Headcount Enrollment of Female Students, 1994 - 1998

<u>Undergraduate</u>	1994		1995		1996		1997		1998	
	Count	Percent	Count	Percent	Count	Percent	Count	Percent	Count	Percent
Arts and Sciences	2,795	57%	2,989	59%	3,089	60%	3,094	60%	3,063	60%
Business	140	44%	129	42%	148	46%	190	49%	201	51%
Unclassified	60	56%	67	58%	75	58%	41	67%	62	62%
Total Undergraduate	2,995	56%	3,185	58%	3,312	59%	3,325	60%	3,326	59%
<u>Graduate</u>										
Arts and Sciences	209	46%	227	48%	189	44%	173	45%	174	46%
Business	107	30%	110	28%	105	28%	100	26%	118	29%
Education	394	77%	379	78%	330	77%	286	78%	250	76%
Graduate Law	3	33%	6	33%	2	67%	3	50%	3	75%
Marine Science	61	47%	59	47%	53	43%	52	43%	58	46%
Unclassified	151	66%	158	72%	160	73%	147	69%	120	71%
Total Graduate	925	55%	939	55%	839	53%	761	51%	723	51%
<u>First Professional</u>										
Law	220	43%	230	44%	244	46%	238	46%	237	45%
Grand Total	4,140	55%	4,354	56%	4,395	57%	4,324	57%	4,286	56%

Note: Percentages refer to percents of school totals. Students studying abroad are included from 1994 through 1996. See table 25 for information concerning students studying abroad. Masters programs in English, Government, Mathematics, and Sociology were phased out through implementation of the strategic plan, explained in *Into the Fourth Century: A Plan for the Future of the College of William and Mary* (1994). The plan implementation also restructured graduate programs in the School of Education. Results of the restructuring are reflected beginning with 1995.

Table 22: Fall Headcount Enrollment by Full-Time/Part-Time Status, 1994 - 1998

<u>Undergraduate</u>	1995		1996		1997		1998					
	Full-Time Count	Part-Time Percent	Full-Time Count	Part-Time Percent	Full-Time Count	Part-Time Percent	Full-Time Count	Part-Time Percent				
Arts and Sciences	5,009	99%	5,106	99%	64	5,058	99%	58	5,093	99%	53	
Business	300	99%	4	318	100%	1	382	99%	4	391	99%	5
Unclassified	17	15%	98	6%	121	4	7%	57	13	13%	87	
Total Undergraduate	5,326	97%	154	5,432	97%	186	5,444	98%	119	5,497	97%	145
<u>Graduate</u>												
Arts and Sciences	406	86%	64	359	83%	71	346	89%	42	330	87%	51
Business	247	64%	139	239	64%	134	237	61%	153	258	62%	155
Education	189	39%	300	168	39%	258	160	43%	209	154	47%	174
Graduate Law	11	61%	7	3	100%	0	6	100%	0	4	100%	0
Marine Science	92	74%	33	96	79%	26	102	85%	18	114	90%	13
Unclassified	13	6%	206	22	10%	198	24	11%	190	16	9%	153
Total Graduate	958	56%	749	887	56%	687	875	59%	612	876	62%	546
<u>First Professional</u>												
Law	522	100%	0	530	100%	0	521	100%	0	526	100%	0
Grand Total	6,806	88%	903	6,849	89%	873	6,840	90%	731	6,899	91%	691

Note: Percentages refer to percents of school totals. Students studying abroad are included in 1995 and 1996. See table 25 for information concerning students studying abroad. Masters programs in English, Government, Mathematics, and Sociology were phased out through implementation of the strategic plan, explained in *Into the Fourth Century: A Plan for the Future of the College of William and Mary* (1994). The plan implementation also restructured graduate programs in the School of Education. Results of the restructuring are reflected beginning with 1995.

Table 23: Fall Headcount Enrollment of Undergraduate Students by School and Academic Level, 1994 - 1998

Year	School	First-Time Freshmen		Other Freshmen		Total Freshmen		Sophomores	Juniors	Seniors	Total
		Count	%	Count	%	Count	%				
1994	Arts and Sciences	1,252		116		1,368		1,236	1,144	1,185	4,933
	Business	0		0		0		0	160	159	319
	Total	1,252		116		1,368		1,236	1,304	1,344	5,252
1995	Arts and Sciences	1,373		50		1,423		1,308	1,128	1,202	5,061
	Business	0		0		0		0	149	155	304
	Total	1,373		50		1,423		1,308	1,277	1,357	5,365
1996	Arts and Sciences	1,333		212		1,545		1,331	1,142	1,152	5,170
	Business	0		0		0		0	176	143	319
	Total	1,333		212		1,545		1,331	1,318	1,295	5,489
1997	Arts and Sciences	1,331		57		1,388		1,344	1,208	1,176	5,116
	Business	0		0		0		0	197	189	386
	Total	1,331		57		1,388		1,344	1,405	1,365	5,502
1998	Arts and Sciences	1,292		44		1,336		1,369	1,205	1,236	5,146
	Business	0		0		0		0	205	191	396
	Total	1,292		44		1,336		1,369	1,410	1,427	5,542

Note: Academic level is based on cumulative hours earned, not length of time since matriculation. Students studying abroad are from 1994 through 1996. All unclassified students are excluded.

Table 24: Fall Headcount Enrollment by Age, 1998

Undergraduate	17 and under		18-21		22-25		26-30		31-35		36 and over		Under 21	
	Count	%	Count	%	Count	%	Count	%	Count	%	Count	%	Count	%
Arts and Sciences	145	3%	4,698	94%	229	99%	34	99%	9	99%	31	100%	3,862	75%
Business	0	0%	362	91%	26	98%	8	100%	0	100%	0	100%	201	51%
Unclassified	40	40%	18	58%	15	73%	6	79%	6	85%	15	100%	54	54%
Total Undergraduate	185	3%	5,078	93%	270	98%	48	99%	15	99%	46	100%	4,117	73%
Graduate														
Arts and Sciences	0	0%	8	2%	142	39%	128	73%	54	87%	49	100%	1	0%
Business	0	0%	3	1%	67	17%	210	68%	75	86%	58	100%	0	0%
Education	0	0%	7	2%	72	24%	77	48%	31	57%	141	100%	0	0%
Graduate Law	0	0%	0	0%	1	25%	2	75%	0	75%	1	100%	0	0%
Marine Science	0	0%	1	1%	46	37%	44	72%	20	87%	16	100%	0	0%
Unclassified	0	0%	1	1%	32	20%	42	44%	19	56%	75	100%	0	0%
Total Graduate	0	0%	20	1%	360	27%	503	62%	199	76%	340	100%	1	0%
First Professional														
Law	0	0%	9	2%	297	58%	160	89%	41	96%	19	100%	1	0%
Grand Total	185	2%	5,107	70%	927	82%	711	91%	255	95%	405	100%	4,119	54%

Note: Age is as of September 1, 1998. Percents represent cumulative percents of the school totals, except the "Under 21" column. Students studying abroad are excluded.

Source: SCHEV Fall Headcount Enrollment File.