



# The College of William and Mary



*University Databook  
2000-01*

2000-01

THE COLLEGE OF WILLIAM AND MARY  
*University Databook*



OFFICE OF INSTITUTIONAL RESEARCH  
THE COLLEGE OF WILLIAM AND MARY  
P.O. Box 8795  
WILLIAMSBURG, VIRGINIA 23187-8795



CHARTERED 1693

THE COLLEGE OF WILLIAM AND MARY IN VIRGINIA  
OFFICE OF INSTITUTIONAL RESEARCH

POST OFFICE BOX 8795  
WILLIAMSBURG VIRGINIA 23187-8795

FAX 757-221-2080

April 13, 2001

The *University Databook*, published annually by the Office of Institutional Research, is designed to provide the most frequently requested information about the College of William and Mary, using data from a wide variety of sources.

Information in the *Databook* is presented in tabular or graphic form, and occasionally in both formats. The aim is to present the information in the clearest, most useful manner. Suggestions based on actual use of the *Databook* are welcome, although space limitations do affect the amount and depth of information presented.

The information found in the *Databook* comes from the College's computerized databases, and certain offices of the College (please note citations on the tables and graphs). The cooperation of those offices is greatly appreciated.

The information in the *Databook* can be found on the World Wide Web at:

<http://www.wm.edu/institresearch/index.htm>

Office of Institutional Research

Lorne Kuffel  
Director  
757-221-2144  
lorne@wm.edu

Daina P. Henry  
Assistant Director of  
Planning and Institutional  
Research  
757-221-2571  
dphenr@wm.edu

Matt Clayton  
Administrative Analyst  
757-221-2147  
jmclay@wm.edu

Archives  
LD  
6051  
.W492  
U5  
2000/  
2001  
cop. 2

467308-15002

## TABLE OF CONTENTS

Mission Statement .....	v
-------------------------	---

### LIST OF TABLES

TABLE		PAGE
<i>History and Organization</i>		
1.	History of Earned Degrees Currently Offered .....	1
2.	Chancellors of the College .....	2
3.	Presidents of the College .....	3
4.	Administrative Organization, 2000-01 .....	4
<i>Admissions</i>		
5.	First-Time Freshman and Transfer Applications, Offers, and Accepts, Fall 1991 – Fall 2000 .....	5
6.	First-Time Freshman Statistical Admission Characteristics, Fall 1996 – Fall 2000 .....	6
7.	First-Time Freshman Historical Admission Profile, Entering Classes Fall 1981 through Fall 2000.....	7
8.	First-Time Freshmen by Previous School Type, Fall 1996 – Fall 2000 .....	8
9.	First-Time Freshmen by Geographic Origin, Fall 1996 – Fall 2000 .....	9
10.	Admissions to the Graduate and First Professional Schools, 1996 – 2000 .....	10
11.	Graduate and First Professional Statistical Admission Characteristics, 1996 – 2000 .....	11
<i>Enrollment</i>		
12.	Fall Headcount Enrollment by School, 1991 – 2000 (Table) .....	12
13.	Fall Headcount Enrollment, 1991 – 2000 (Graph) .....	13
14.	Summer Session Headcount Enrollment by School, 1994 – 2000 .....	14
15.	Fall Headcount Enrollment of Virginia Residents, 1996 – 2000 (Table).....	15
16.	Fall Semester Percent of Virginia Residents by School, 1996 – 2000 (Graph) .....	16
17.	Fall Headcount Enrollment by State, 1994 – 2000 (Table) .....	17

TABLE	PAGE
18. Fall Headcount Enrollment by State, 2000 (Map) .....	19
19. Fall Headcount Enrollment of Virginia Residents by City or County, 1997 – 2000 (Table) .....	20
20. Fall Headcount Enrollment of Virginia Residents, 2000 (Map) .....	23
21. Fall Headcount Enrollment by Race and Ethnicity, 2000 .....	24
22. Fall Headcount Enrollment of African American Students, 1996 – 2000 .....	25
23. Fall Headcount Enrollment of Female Students, 1996 – 2000 .....	26
24. Fall Headcount Enrollment by Full-Time/Part-Time Status, 1997 – 2000 .....	27
25. Fall Headcount Enrollment of Degree-Seeking Undergraduate Students by School and Academic Level, 1996 – 2000 .....	28
26. Fall Headcount Enrollment by Age, 2000 .....	29
27. Fall Headcount Enrollment of Global Education Students, 1997-98 through 2000-01 .....	30
28. Fall Headcount Enrollment by Level, Full-Time/Part-Time Status, and Domicile, 2000 .....	31
29. Fall Headcount Enrollment by Level, Full-Time/Part-Time Status, and Gender, 2000 .....	32
30. Fall Headcount Enrollment by School, Full-Time/Part-Time Status, and Domicile, 2000 .....	33
31. Fall Headcount Enrollment by Level, Race, Ethnicity, and Gender, 2000 .....	34
32. Fall Headcount Enrollment by School, Race, Ethnicity, and Gender, 2000 .....	35
33. Fall Headcount Enrollment by School, Degree Level, and Major, 1996 – 2000 .....	36
34. FTE Students by Department and Student Level, 1996-97 through 1999-2000 .....	38
<b>Academic Progress of Undergraduate Students</b>	
35. Mean Cumulative Quality Point Averages (QPA) of Undergraduate Students, 1996-97 through 1999-2000 .....	41
36. Graduation and Retention Rates for First-Time Freshmen, Classes Entering Fall 1991 though Fall 1999 .....	42
37. Dean's List of Distinguished Students in the Undergraduate Schools .....	43
<b>Degrees</b>	
38. Approved Degree Programs, 2000-01 .....	44

TABLE	PAGE
39. Distribution of Degrees Conferred by School, Degree Level, and Major, 1995-96 through 1999-2000 (Table) .....	45
40. Degrees Conferred by Level, 1995-96 through 1999-2000 (Chart) .....	47
<b>Alumni</b>	
41. Distribution of Alumni by Current State of Residence, Fall 2000 .....	48
<b>Tuition and Fees</b>	
42. Full-Time Student Costs for an Academic Year (Two Semesters), 1998-99 through 2000-01 .....	49
<b>Financial Aid</b>	
43. Major Federal, State, and Institutional Need-Based Student Aid Program Expenditures for Undergraduates, 1996-97 through 1999-2000 .....	50
<b>Housing</b>	
44. Student Housing Occupancy, Fall 1997 through Fall 2000 .....	52
45. Housing Facilities .....	52
<b>Faculty and Staff</b>	
46. Salaried Workforce by Race, Ethnicity, and Gender, Fall 2000 .....	53
47. Salaried Workforce by Major Organizational Unit, Fall 2000 .....	54
48. Instructional and Research Faculty by Race, Ethnicity, and School, Fall 2000 .....	56
49. Instructional and Research Faculty by Gender and School, Fall 2000 .....	57
50. Instructional and Research Faculty by Rank and School, Fall 2000 .....	58
51. Tenured Full-Time Instructional and Research Faculty by Race, Ethnicity, Gender, and School, Fall 2000 .....	59
52. Full-Time Instructional and Research Faculty by Tenure Status and School, Fall 2000 .....	60
53. Full-Time Instructional and Research Faculty by Degree Status and School, Fall 2000 .....	61
54. Instructional and Research Faculty by School, Full-Time/Part-Time Status, and Age, Fall 2000 .....	62
55. Average Salary of Full-Time Instructional and Research Faculty by Rank, 1996-97 through 2000-01 .....	63
56. Average Compensation of Full-Time Instructional and Research Faculty by Rank, 1996-97 through 2000-01 .....	64

TABLE	PAGE
<b>Finance</b>	
57. Income of the College, 1990-91 through 1999-2000 .....	65
58. Consolidated Income of the College, 1990-91 through 1999-2000 .....	66
59. Expenditures of the College, 1990-91 through 1999-2000 .....	67
60. Consolidated Expenditures of the College, 1990-91 through 1999-2000 .....	68
61. Market Value of the Endowments, 1985-86 through 1999-2000 .....	69
62. Gift Support, 1990-91 through 1999-2000 .....	70
63. Capital Construction and Renovation Since 1991-92 .....	71
64. Investment in the Physical Plant, 1990-91 through 1999-2000 .....	73
65. Sponsored Program Award Summary by School and Grantor, 1999-2000 .....	74
66. Sponsored Program Award Summary by School, 1997-98 through 1999-2000 .....	75
<b>Libraries</b>	
67. Size of Collections of the Libraries, 1995-96 through 1999-2000 .....	76
<b>Facilities</b>	
68. Facilities by Completion Period (Table) .....	77
69. Gross Square Footage of Facilities by Completion Period (Chart) .....	78
70. Net Assignable Square Footage of Facilities by Functional Category .....	79
71. Land Holdings .....	80
<b>Peer Institutions</b>	
72. Location of the Peer Institutions (Map) .....	81
73. Selected Admission Characteristics of the Peer Institutions, Fall 1999 .....	82
74. Fall Headcount Enrollment of the Peer Institutions, 1999 .....	83
75. Fall Headcount Enrollment of the Peer Institutions by Gender, 1999 .....	84
76. Fall Headcount Enrollment of the Peer Institutions by Full-Time/Part-Time Status, 1999 .....	85
77. Retention and Graduation Rates of the Peer Institutions .....	86
78. Faculty Salaries, Alumni Giving, and Endowments of the Peer Institutions .....	87

## Mission Statement

The College of William and Mary, a public university in Williamsburg, Virginia, is the second-oldest institution of higher learning in the United States. Established in 1693 by British royal charter, William and Mary is proud of its role as the Alma Mater of generations of American patriots, leaders, and public servants. Now, in its fourth century, it continues this tradition of excellence by combining the best features of an undergraduate college with the opportunities offered by a modern research university. Its moderate size, dedicated faculty, and distinctive history give William and Mary a unique character among public institutions, and create a learning environment that fosters close interaction among students and teachers.

The university's predominantly residential undergraduate program provides a broad liberal education in a stimulating academic environment enhanced by a talented and diverse student body. This nationally acclaimed undergraduate program is integrated with selected graduate and professional programs in five faculties -- Arts and Sciences, Business, Education, Law, and Marine Science. Masters and doctoral programs in the humanities, the sciences, the social sciences, business, education, and law provide a wide variety of intellectual opportunities for students at both graduate and undergraduate levels.

At William and Mary, teaching, research, and public service are linked through programs designed to preserve, transmit, and expand knowledge. Effective teaching imparts knowledge and encourages the intellectual development of both student and teacher. Quality research supports the educational program by introducing students to the challenge and excitement of original discovery, and is a source of the knowledge and understanding needed for a better society. The university recognizes its special responsibility to the citizens of Virginia through public and community service to the Commonwealth as well as to national and international communities. Teaching, research, and public service are all integral parts of the mission of William and Mary.

### Goals

In fulfilling its mission, William and Mary adopts the following specific goals:

- to attract outstanding students from diverse backgrounds;
- to develop a diverse faculty which is nationally and internationally recognized for excellence in both teaching and research;
- to provide a challenging undergraduate program with a liberal arts and sciences curriculum that encourages creativity, independent thought, and intellectual depth, breadth, and curiosity;
- to offer high quality graduate and professional programs that prepare students for intellectual, professional, and public leadership;
- to instill in its students an appreciation for the human condition, a concern for the public well-being, and a life-long commitment to learning; and
- to use the scholarship and skills of its faculty and students to further human knowledge and understanding, and to address specific problems confronting the Commonwealth of Virginia, the nation, and the world.

Source: *Into the Fourth Century: A Plan for the Future of the College of William and Mary* (1994).

**Table 1: History of Earned Degrees Currently Offered**

<u>Degree</u>	<u>Authorized by Board of Visitors</u>	<u>Year of First Earned Degree</u>	<u>Degree Offered</u>
Bachelor of Arts	1792	1772 *	A. B.
Master of Arts	1792	1824	M. A.
Bachelor of Science	1906	1908	B. S.
Master of Education	1948	1947	M. Ed.
Master of Arts in Education	1948	1962	M. A. Ed.
Master of Science	1957	1966	M. S.
Doctor of Philosophy	1964	1967	Ph. D.
Doctor of Education	1966	1972	Ed. D.
Master of Business Administration	1966	1968	M. B. A.
Juris Doctor	1967	1968	J. D.
Master of Law	1967	1971	L. L. M.
Bachelor of Business Administration	1971	1973	B. B. A.
Master of Accounting	1997	2000	M. Acc.

\* The original A. B. degree was the result of the efforts of Lord Botetourt, colonial governor of Virginia, to stimulate students to complete the examinations for the degree of bachelor of arts. In 1792, after the American Revolution, the Board of Visitors established explicit requirements for the bachelor of arts, as well as the bachelor of law degree. Certain bachelors degrees are now identified as B. A. degrees.

Note: At certain times in its history, the College has offered earned degrees including Bachelor of Chemistry (B. C.), Bachelor of Civil Law (B. C. L.), Bachelor of Law (B. L.), Bachelor of Philosophy, Certificate of Advanced Graduate Studies in Education (C. A. G. S.), Doctor of Laws - Science (J. S. D.), Licentiate of Instruction (L. I.), Master of Arts in Teaching (M. A. T.), Master of Law and Taxation (M. L. T.), Master of Taxation (M. T.), Master of Teaching in Science (M. T. S.), and Doctor of Law (LL. D.). In addition, honorary degrees including Doctor of Fine Arts (A. E. D.), Doctor of Arts (D. A.), Doctor of Divinity (D. D.), Doctor of Laws (LL. D.), Bachelor of Laws (B. L.), Doctor of Humane Letters (L. H. D.), Doctor of Literature (Litt. D.), Doctor of Taxation and Law (L. T. D.), and Doctor of Science (Sc. D.) have been awarded.

Source: *The College of William and Mary: A History; Vital Facts: A Chronology of the College of William and Mary*; University Archives.

Table 2: Chancellors of the College

Name	Title	Years Served
Henry Compton	Bishop of London	1693 - 1700
Thomas Tenison	Archbishop of Canterbury	1700 - 1707
Henry Compton	Bishop of London	1707 - 1713
John Robinson	Bishop of London	1714 - 1721
William Wake	Archbishop of Canterbury	1721 - 1729
Edmund Gibson	Bishop of London	1729 - 1736
William Wake	Archbishop of Canterbury	1736 - 1737
Edmund Gibson	Bishop of London	1737 - 1748
Thomas Sherlock	Bishop of London	1749 - 1761
Thomas Hayter	Bishop of London	1762 - 1763
Charles Wyndham	Bishop of London	1762 - 1763
Philip Yorke	Earl of Egremont	1764 - 1776
Richard Terrick	Earl of Harwick	1764 - 1776
George Washington	Bishop of London	1788 - 1799
John Tyler	First President of the United States	1859 - 1862
Hugh Blair Grigsby	Tenth President of the United States	1871 - 1881
John Stewart Bryan	Historian	1942 - 1944
Colgate W. Darden, Jr.	Nineteenth President of the College	1946 - 1947
Alvin Duke Chandler	Governor of Virginia	1962 - 1974
Warren E. Burger	Twenty-first President of the College	1986 - 1993
Margaret Thatcher	Fifteenth Chief Justice of the United States	1993 - 2000
Henry A. Kissinger	Former Prime Minister of Great Britain	2000 -
	Former Secretary of State	-

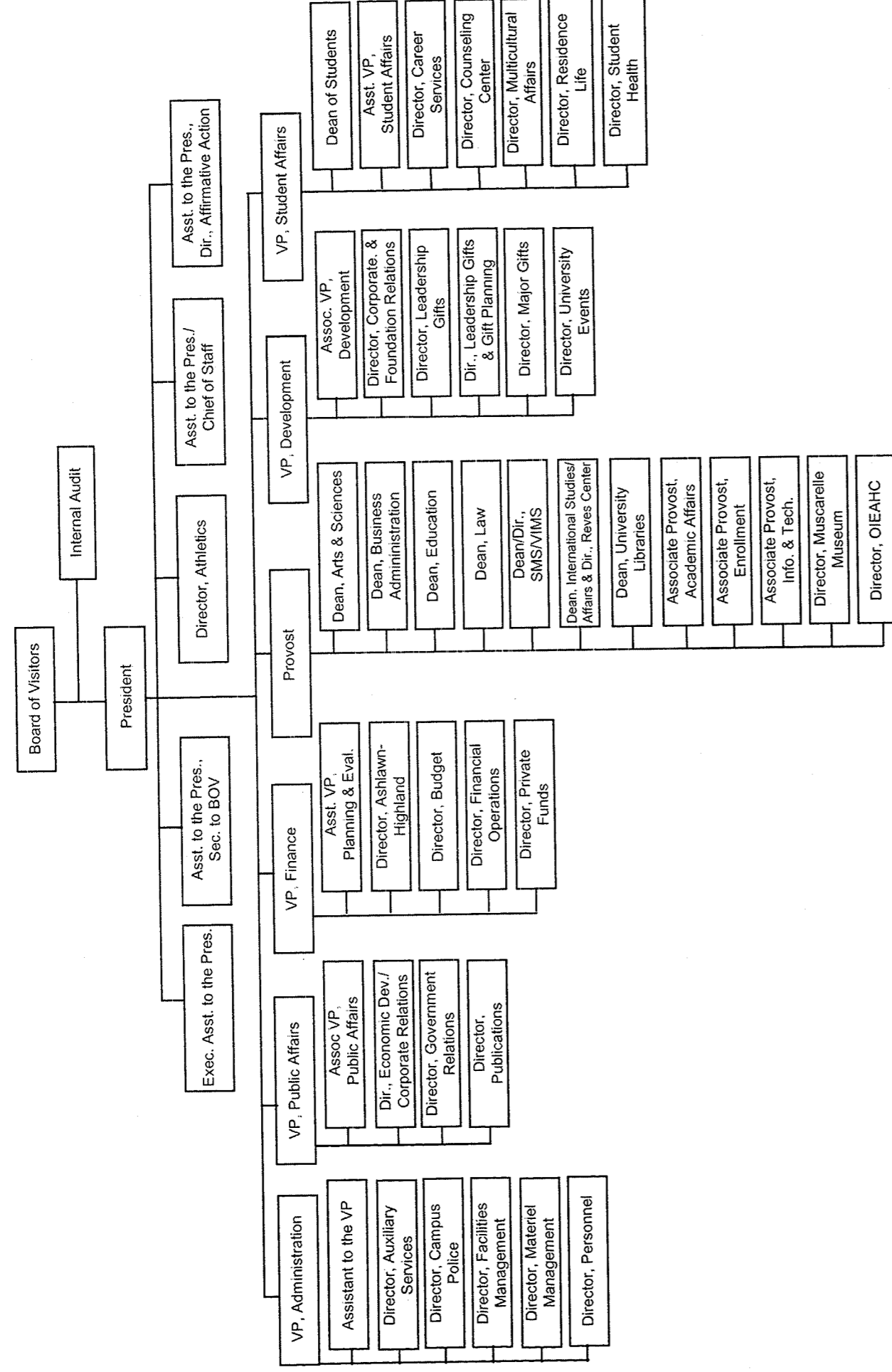
Table 3: Presidents of the College

Name	Years Served
James Blair	1693 - 1743
William Dawson	1743 - 1752
William Stith	1752 - 1755
Thomas Dawson	1755 - 1760
William Yates	1761 - 1764
James Horrocks	1764 - 1771
John Camm	1771 - 1777
James Madison	1777 - 1812
John Bracken	1812 - 1814
John Augustine Smith	1814 - 1826
William H. Wilmer	1826 - 1827
Adam Empie	1827 - 1836
Thomas Roderick Dew	1836 - 1846
Robert Saunders	1847 - 1848
John Johns	1849 - 1854
Benjamin S. Ewell	1854 - 1888
Lyon G. Tyler	1888 - 1919
Julian A. C. Chandler	1919 - 1934
John Stewart Bryan	1934 - 1942
John Edwin Pomfret	1942 - 1951
Alvin Duke Chandler	1951 - 1960
Davis Young Paschall	1960 - 1971
Thomas Ashley Graves, Jr.	1971 - 1985
Paul Robert Verkuil	1985 - 1992
Timothy Jackson Sullivan	1992 -

Source: *Vital Facts: A Chronology of the College of William and Mary.*



**Table 4: Administrative Organization, 2000-01**



Note: Organizational structure as of February 1, 2001.

Source: Provost's Office

**Table 5: First-Time Freshman and Transfer Applications, Offers, and Accepts  
Fall 1991 - Fall 2000**

First-Time Freshmen	1991	1992	1993	1994	1995	1996	1997	1998	1999	2000
Total Applications	8,140	8,274	7,916	8,169	7,953	7,424	7,201	7,615	7,565	8,779
Completed Applications	7,125	7,222	7,448	7,797	6,804	7,079	6,599	6,831	6,877	8,129
Offers Made	2,878	2,997	3,101	3,118	3,335	3,232	3,033	3,084	3,089	3,302
Offer Rate	35%	36%	39%	38%	42%	44%	42%	40%	41%	38%
Offers Accepted	1,221	1,215	1,211	1,253	1,373	1,333	1,331	1,292	1,301	1,350
Yield	42%	41%	39%	40%	41%	41%	44%	42%	42%	41%
<b>Transfers</b>										
Total Applications	807	634	667	656	620	519	542	525	514	469
Completed Applications	637	581	510	548	516	473	498	478	464	467
Offers Made	191	234	230	283	259	264	283	256	250	217
Offer Rate	24%	37%	34%	43%	42%	51%	52%	49%	49%	46%
Offers Accepted	111	146	130	159	135	125	143	144	137	124
Yield	58%	62%	57%	56%	52%	47%	51%	56%	55%	57%

Note: Offer rate represents "Offers Made" as a percent of "Total Applications." Yield rate represents "Offers Accepted" as a percent of "Offers Made."

Source: SCHEV Admission Files; Student Information System; Admission Profiles, Office of Admission.

**Table 6: First-Time Freshman Statistical Admission Characteristics  
Fall 1996 - Fall 2000**

	SAT Scores				
	1996	1997	1998	1999	2000
<b>Total</b>					
Ninetieth Percentile	1440	1440	1450	1460	1460
Top Quartile (75%)	1380	1380	1400	1390	1400
Median (50%)	1310	1300	1320	1330	1330
Bottom Quartile (25%)	1210	1210	1230	1240	1240
Tenth Percentile	1130	1110	1140	1160	1150
Mean	1295	1287	1309	1314	1317
<b>Verbal</b>					
Ninetieth Percentile	750	750	760	760	760
Top Quartile (75%)	710	710	710	710	710
Median (50%)	660	650	670	660	670
Bottom Quartile (25%)	600	600	610	620	620
Tenth Percentile	560	550	570	560	560
Mean	656	652	661	662	663
<b>Mathematics</b>					
Ninetieth Percentile	720	720	730	730	740
Top Quartile (75%)	690	680	690	700	700
Median (50%)	640	640	650	660	660
Bottom Quartile (25%)	600	590	600	610	610
Tenth Percentile	550	540	560	560	570
Mean	639	635	648	651	654

**High School Decile Rank**

	Count	Percent	Count	Percent	Count	Percent	Count	Percent	Count	Percent
Top Tenth	655	74%	648	71%	652	74%	602	74%	667	79%
Second Tenth	163	18%	178	20%	164	19%	171	21%	143	17%
Second Fifth	58	7%	69	8%	60	7%	41	5%	29	3%
Bottom Three-fifths	11	1%	14	2%	6	1%	5	1%	5	1%
Unranked	446		422		410		482		506	

Note: Transfer students are excluded. Percentages exclude students not reporting a rank (unranked).

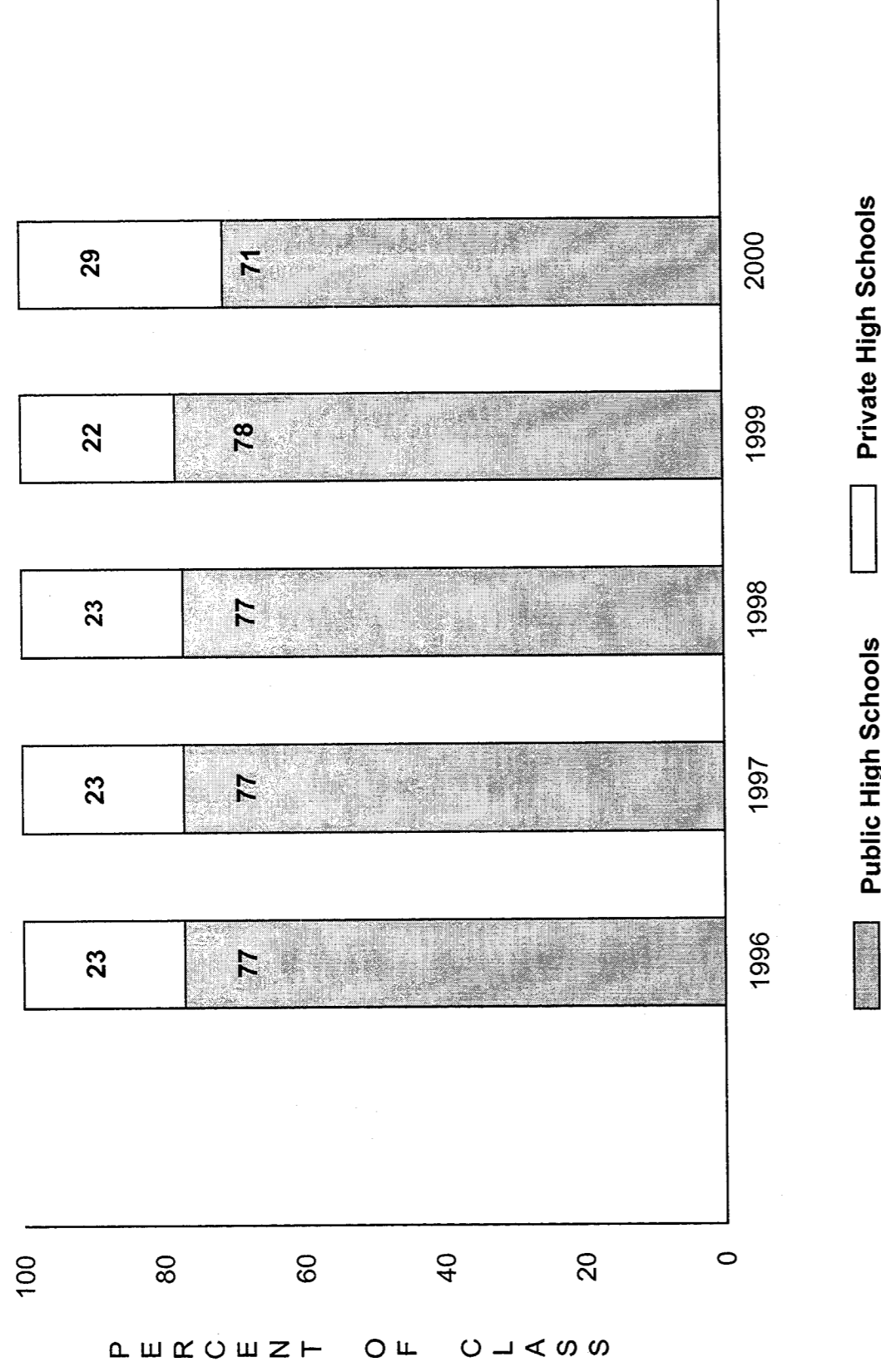
**Table 7: First-Time Freshman Historical Admission Profile  
Entering Classes Fall 1981 through Fall 2000**

Entering Class	Count	Non-Recentered SAT Scores			Recentered SAT Scores			Percent in 1st Decile of HS Class *
		Verbal	Math	Total	Verbal	Math	Total	
1981	1,096	581	616	1197				66%
1982	1,090	587	607	1194				67%
1983	1,107	578	615	1193				57%
1984	1,136	574	611	1185				56%
1985	1,146	583	617	1200				59%
1986	1,331	580	621	1201				60%
1987	1,230	587	634	1221				68%
1988	1,197	594	635	1229				73%
1989	1,266	591	635	1226	659	638	1297	75%
1990	1,235	581	633	1214	650	635	1285	72%
1991	1,221	593	645	1238	661	647	1308	70%
1992	1,215	583	623	1206	652	627	1279	68%
1993	1,211	591	638	1229	659	641	1300	72%
1994	1,253	591	636	1227	658	637	1295	70%
1995	1,373	588	637	1225	657	639	1296	72%
1996	1,333				656	639	1295	74%
1997	1,331				652	635	1287	71%
1998	1,292				661	648	1309	74%
1999	1,301				662	651	1314	74%
2000	1,350				663	654	1317	79%

\* Percentage of those reporting a high school class rank.

Source: Office of Admission Profiles, Student Information System.

**Table 8: First-Time Freshmen by Previous School Type**  
Fall 1996 - Fall 2000



**Table 9: First-Time Freshmen by Geographic Origin**  
Fall 1996 - Fall 2000

	1996		1997		1998		1999		2000	
	Count	Percent	Count	Percent	Count	Percent	Count	Percent	Count	Percent
Virginia	863	65%	870	65%	790	61%	731	56%	840	62%
Mid-Atlantic	235	18%	221	17%	240	19%	300	23%	229	17%
South	67	5%	62	5%	64	5%	81	6%	77	6%
New England	62	5%	68	5%	68	5%	72	6%	84	6%
Midwest	48	4%	54	4%	49	4%	51	4%	54	4%
Far West	28	2%	21	2%	48	4%	35	3%	22	2%
Unknown	11	1%	13	1%	14	1%	14	1%	20	1%
U.S. Territories	1	0%	0	0%	1	0%	0	0%	1	0%
Foreign Countries	18	1%	22	2%	18	1%	17	1%	23	2%
<b>Grand Total</b>	<b>1,333</b>		<b>1,331</b>		<b>1,292</b>		<b>1,301</b>		<b>1,350</b>	

Note: Far West: AK, AZ, CA, CO, HI, ID, NV, NM, OR, UT, WA, WY; Mid-Atlantic: DC, DE, MD, NJ, NY, PA, WV; Midwest: IL, IN, IA, KS, MI, MN, MO, MT, ND, NE, OH, OK, SD, WI; New England: CT, ME, MA, NH, RI, VT; South: AL, AR, FL, GA, KY, LA, MS, NC, SC, TN, TX. Not all states are represented in a given year.

Source: SCHEV Admission Files.

Table 10: Admissions to the Graduate and First Professional Schools, 1996 - 2000

	1996		1997		1998		1999		2000	
	Count	Percent	Count	Percent	Count	Percent	Count	Percent	Count	Percent
<b>Arts and Sciences</b>										
Total Applications	961		856		758		755		803	
Offers Made	318	33% *	339	40%	306	40%	282	37%	278	35%
Offers Accepted	143	45% **	146	43%	151	49%	147	52%	142	51%
<b>Education</b>										
Total Applications	420		421		357		378		374	
Offers Made	209	50%	281	67%	253	71%	279	74%	255	68%
Offers Accepted	136	65%	155	55%	131	52%	175	63%	173	68%
<b>Graduate Business - MBA Programs</b>										
Total Applications	418		489		470		445		461	
Offers Made	235	56%	296	61%	322	69%	276	62%	306	66%
Offers Accepted	106	45%	169	57%	180	56%	169	61%	179	58%
<b>Graduate Business - Executive MBA</b>										
Total Applications	N.A.		N.A.		N.A.		77		65	
Offers Made	N.A.		N.A.		N.A.		50	65%	40	62%
Offers Accepted	N.A.		N.A.		N.A.		44	88%	36	90%
<b>Law</b>										
Total Applications	2,662		2,364		2,228		2,357		2,545	
Offers Made	793	30%	723	31%	770	35%	735	31%	737	29%
Offers Accepted	204	26%	180	25%	182	24%	204	28%	184	25%
<b>Marine Science</b>										
Total Applications	241		218		176		164		141	
Offers Made	49	20%	50	23%	42	24%	60	37%	48	34%
Offers Accepted	31	63%	27	54%	25	60%	34	57%	24	50%

\* Represents "Offers Made" as a percent of "Total Applications" (offer rate).

\*\* Represents "Offers Accepted" as a percent of "Offers Made" (yield rate).

Note: An admission year includes the three terms in a calendar year: spring, summer, and fall. Unclassified students are excluded. All applications from those who apply to more than one school or department are counted.

Table 11: Graduate and First Professional Statistical Admission Characteristics  
1996 - 2000

	1996	1997	1998	1999	2000
	<b>Arts and Sciences</b>				
Mean GRE Verbal	594	578	560	560	566
Mean GRE Mathematics	649	625	637	656	651
Mean GRE Analytical	664	640	651	637	660
Mean Undergraduate GPA	3.42	3.42	3.34	3.44	3.45
<b>Education</b>					
Mean GRE Verbal	546	535	503	515	526
Mean GRE Mathematics	589	581	561	562	577
Mean GRE Analytical	626	615	596	586	592
Mean MAT	59	57	58	56	56
Mean Undergraduate GPA	3.32	3.21	3.17	3.31	3.36
<b>Business Administration</b>					
Mean GMAT	605	620	630	627	626
Mean Undergraduate GPA	3.20	3.30	3.21	3.12	3.12
<b>Law</b>					
Mean LSAT	163	162	161	162	162
Mean Undergraduate GPA	3.36	3.30	3.25	3.31	3.26
<b>Marine Science</b>					
Mean GRE Verbal	590	620	596	588	572
Mean GRE Mathematics	645	662	677	674	681
Mean GRE Analytical	626	695	641	662	678
Mean Undergraduate GPA	3.44	3.40	3.50	3.36	3.52

Note: The range of possible scores for the GRE and the GMAT is 200 to 800. The range of possible scores for the LSAT is 120 to 180. The range of possible scores for the MAT is 0 to 100. Mean undergraduate GPAs are reported on a 4.00 scale.

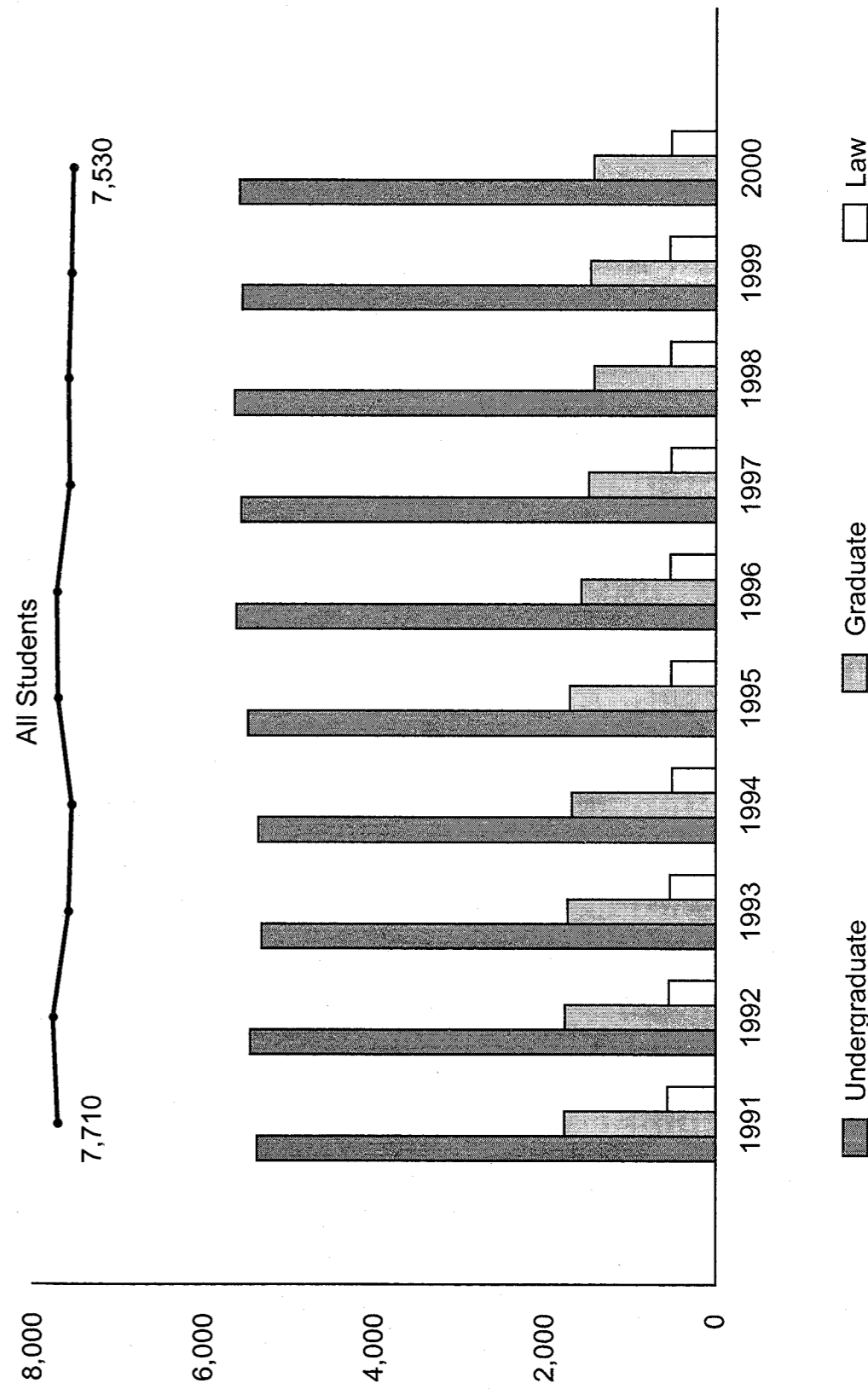
Source: Office of Institutional Research.

**Table 12: Fall Headcount Enrollment by School, 1991 - 2000**

	1991	1992	1993	1994	1995	1996	1997	1998	1999	2000
<b>Undergraduate</b>										
Arts and Sciences	4,909	5,027	4,917	4,933	5,061	5,170	5,116	5,146	5,073	5,073
Business	357	308	297	319	304	319	386	396	396	416
Education	3	0	0	0	0	0	0	0	0	0
Unclassified	107	121	106	107	115	129	61	100	83	96
<b>Total Undergraduate</b>	<b>5,376</b>	<b>5,456</b>	<b>5,320</b>	<b>5,359</b>	<b>5,480</b>	<b>5,618</b>	<b>5,563</b>	<b>5,642</b>	<b>5,552</b>	<b>5,585</b>
<b>Graduate</b>										
Arts and Sciences	396	457	463	450	470	442	402	397	410	393
Business	435	411	340	353	386	373	390	413	414	393
Education	489	505	535	511	489	426	369	328	347	342
Graduate Law	32	22	7	9	18	3	6	4	3	5
Marine Science	113	112	124	129	125	122	120	127	126	126
Unclassified	307	258	262	228	219	208	200	152	165	165
<b>Total Graduate</b>	<b>1,772</b>	<b>1,765</b>	<b>1,731</b>	<b>1,680</b>	<b>1,707</b>	<b>1,574</b>	<b>1,487</b>	<b>1,421</b>	<b>1,465</b>	<b>1,424</b>
<b>First Professional</b>										
Law	562	545	535	508	522	530	521	526	536	521
<b>Grand Total</b>	<b>7,710</b>	<b>7,766</b>	<b>7,586</b>	<b>7,547</b>	<b>7,709</b>	<b>7,722</b>	<b>7,571</b>	<b>7,589</b>	<b>7,553</b>	<b>7,530</b>

Note: Global education (formerly known as "study abroad") students are included from 1992 through 1996. See table 27 for information concerning global education students. Beginning in fall 1991, undergraduates seeking teaching certifications in education were counted with Arts and Sciences, because such students were required to declare primary concentrations in Arts and Sciences. Masters programs in English, Government, Mathematics, and Sociology were phased out through implementation of the strategic plan, explained in *Into the Fourth Century: A Plan for the Future of the College of William and Mary* (1994). The plan implementation also restructured graduate programs in the School of Education. Results of the restructuring are reflected beginning with 1995.

**Table 13: Fall Headcount Enrollment 1991 - 2000**



Note: Global education students are included from 1992 through 1996.  
Source: SCHEV Fall Headcount Enrollment File.

**Table 14: Summer Session Headcount Enrollment by School  
1994 - 2000**

	1994	1995	1996	1997	1998	1999	2000
<b>Undergraduate</b>							
Arts and Sciences	644	609	636	577	630	630	693
Business	49	56	49	36	46	50	53
Unclassified	204	91	102	124	120	132	105
Total Undergraduate	897	756	787	737	796	812	851
<b>Graduate</b>							
Arts and Sciences	25	117	123	88	54	69	55
Business	174	182	200	216	210	198	198
Education	341	364	291	249	241	235	247
Graduate Law	0	2	1	1	0	0	0
Marine Science	104	108	103	101	121	105	105
Unclassified	303	319	309	231	88	159	166
Total Graduate	947	1,092	1,027	886	714	766	771
<b>First Professional</b>							
Law	54	71	61	93	123	41	47
<b>Grand Total</b>	<b>1,898</b>	<b>1,919</b>	<b>1,875</b>	<b>1,716</b>	<b>1,633</b>	<b>1,619</b>	<b>1,669</b>

Source: SCHEV Summer Headcount Enrollment File

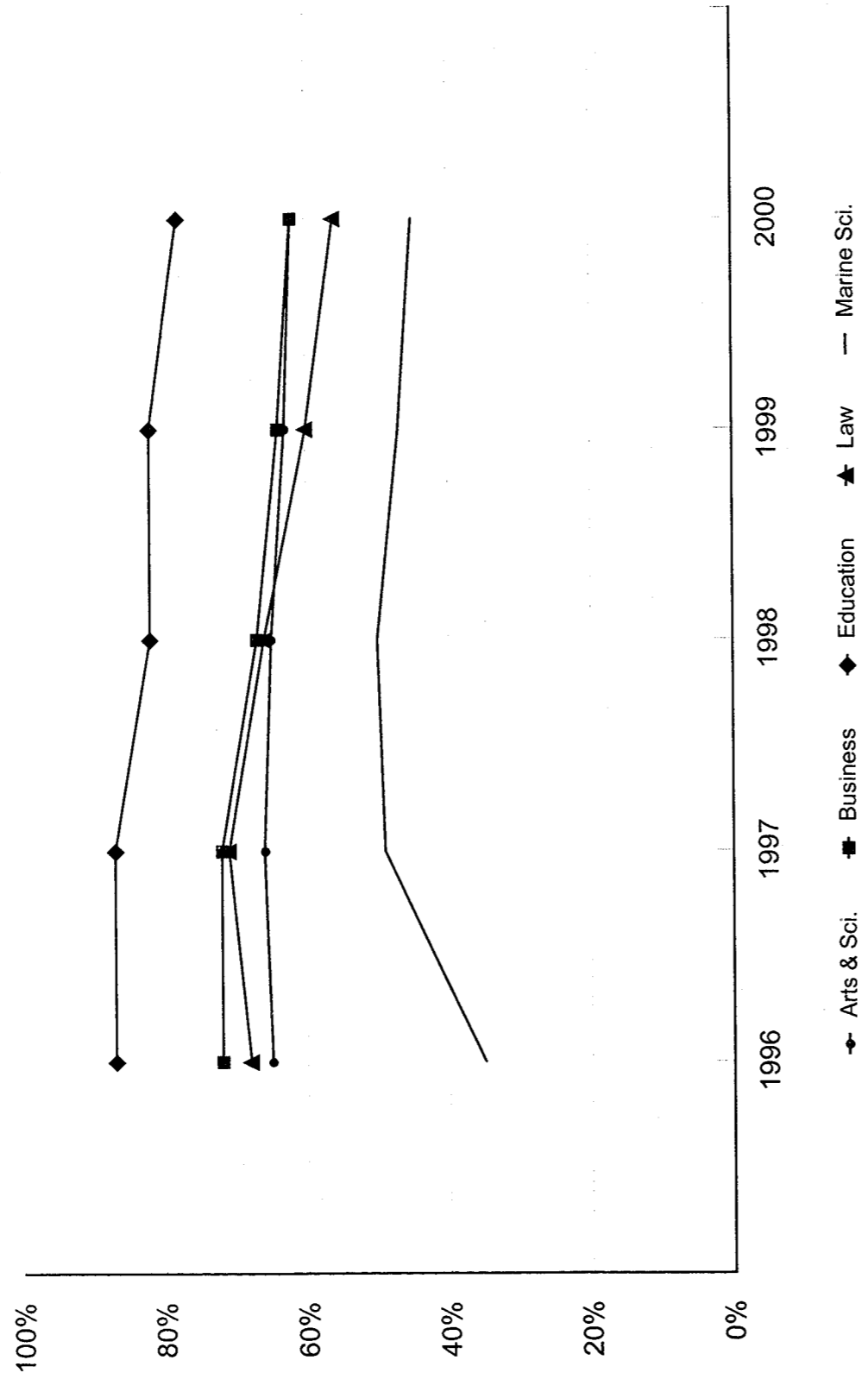
**Table 15: Fall Headcount Enrollment of Virginia Residents, 1996 - 2000**

	1996		1997		1998		1999		2000	
<b>Undergraduate</b>	Count	Percent	Count	Percent	Count	Percent	Count	Percent	Count	Percent
Arts and Sciences	3,464	67%	3,463	68%	3,421	66%	3,262	63%	3,259	64%
Business	206	65%	249	65%	240	61%	246	62%	242	58%
Unclassified	87	67%	54	89%	77	77%	71	71%	67	70%
Total Undergraduate	3,757	67%	3,766	68%	3,738	66%	3,579	63%	3,568	64%
<b>Graduate</b>										
Arts and Sciences	188	44%	173	45%	167	44%	162	43%	145	37%
Business	294	79%	309	79%	299	72%	272	66%	262	67%
Education	370	87%	322	87%	269	82%	285	87%	266	78%
Graduate Law	0	0%	0	0%	0	0%	0	0%	0	0%
Marine Science	43	35%	59	49%	64	50%	59	46%	56	45%
Unclassified	173	79%	149	70%	127	75%	147	87%	140	85%
Total Graduate	1,068	68%	1,012	68%	926	65%	925	65%	869	61%
<b>First Professional</b>										
Law	365	69%	375	72%	349	66%	324	62%	294	56%
<b>Grand Total</b>	<b>5,190</b>	<b>67%</b>	<b>5,153</b>	<b>68%</b>	<b>5,013</b>	<b>66%</b>	<b>4,828</b>	<b>64%</b>	<b>4,731</b>	<b>63%</b>

Note: Percentages refer to percents of school totals. Global education students are included in 1996. See table 27 for information concerning global education students.

Source: SCHEV Fall Headcount Enrollment File.

Table 16: Fall Semester Percent of Virginia Residents by School, 1996 - 2000



Note: Unclassified students are excluded. Global education students are included in 1996.

Table 17: Fall Headcount Enrollment by State, 1994 - 2000

	1994	1995	1996	1997	1998	1999	2000
Alabama	9	6	6	5	7	10	12
Alaska	3	1	0	1	3	4	3
Arizona	7	7	6	7	10	11	16
Arkansas	1	4	4	3	3	5	4
California	74	84	68	56	74	77	78
Colorado	16	9	16	17	18	24	23
Connecticut	99	97	93	79	94	96	89
Delaware	21	25	26	30	23	19	24
District of Columbia	16	17	19	16	18	14	14
Florida	83	74	73	78	79	78	78
Georgia	58	52	52	44	43	40	36
Hawaii	0	3	3	4	6	3	4
Idaho	2	6	5	3	2	2	2
Illinois	46	52	53	50	52	46	46
Indiana	16	19	18	17	21	13	22
Iowa	5	2	4	5	6	9	6
Kansas	6	9	7	9	7	12	11
Kentucky	11	12	14	9	10	17	15
Louisiana	7	8	8	11	11	10	16
Maine	17	14	11	8	13	12	14
Maryland	182	179	175	171	172	183	195
Massachusetts	109	116	105	112	98	102	126
Michigan	21	21	18	21	16	15	15
Minnesota	9	7	7	9	11	11	12
Mississippi	4	6	7	4	5	3	5
Missouri	23	23	24	22	24	26	23
Montana	3	3	1	0	0	2	2
Nebraska	2	3	2	3	3	5	3
Nevada	1	2	3	3	4	3	4
New Hampshire	15	18	17	18	24	22	25

continued on the following page

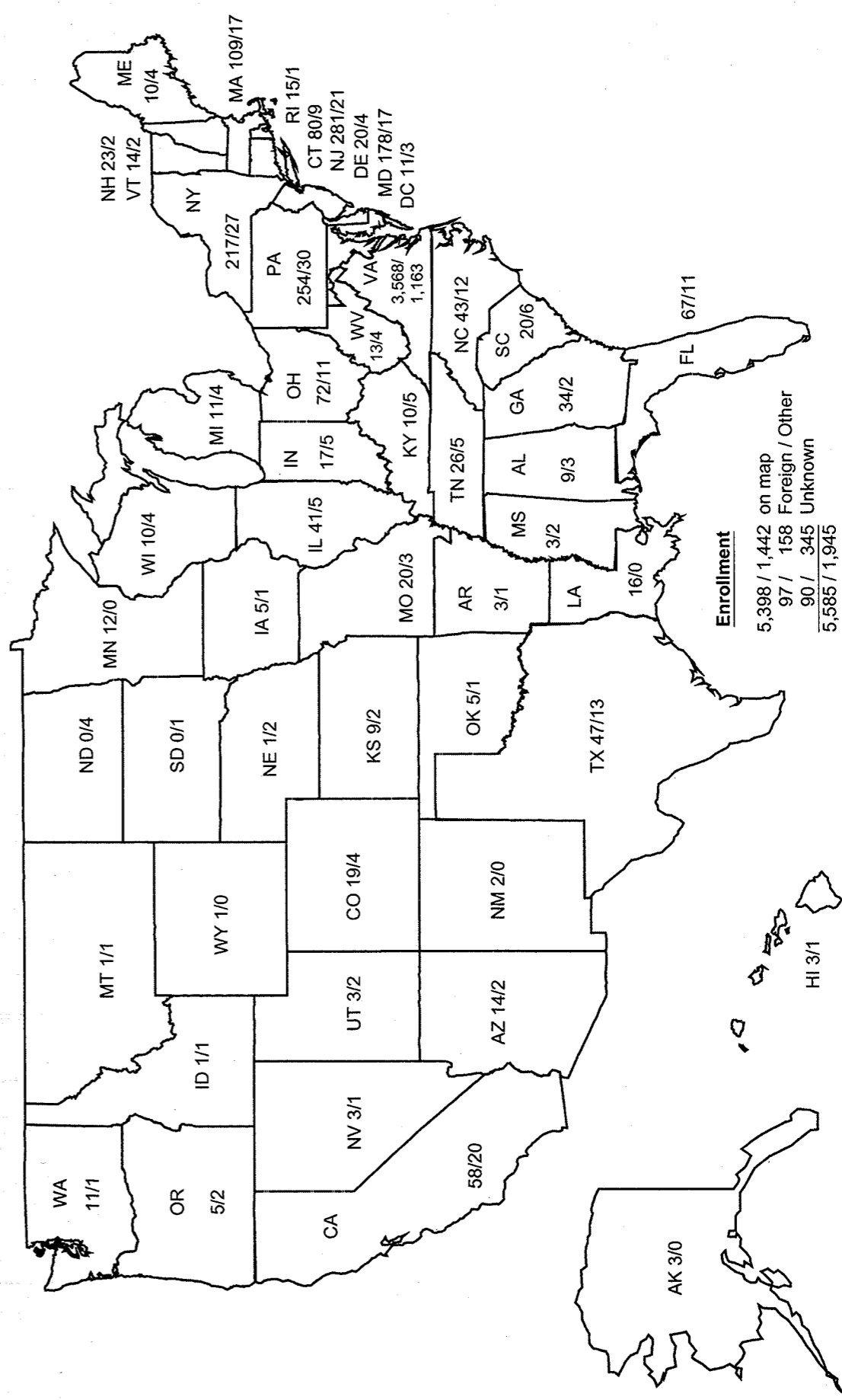
Table 17: Fall Headcount Enrollment by State, 1994 - 2000 (continued)

	1994	1995	1996	1997	1998	1999	2000
New Jersey	262	261	272	278	298	309	302
New Mexico	3	0	1	2	6	4	2
New York	296	301	294	261	259	273	244
North Carolina	61	51	52	56	55	62	55
North Dakota	1	1	0	0	0	1	4
Ohio	57	51	57	69	73	73	83
Oklahoma	4	5	4	3	3	4	6
Oregon	8	4	10	5	10	7	7
Pennsylvania	205	226	241	233	254	281	284
Rhode Island	9	11	13	16	16	17	16
South Carolina	21	22	22	15	20	25	26
South Dakota	0	0	0	0	0	0	1
Tennessee	20	24	27	23	20	21	31
Texas	39	47	40	39	44	60	60
Texas	4	4	5	3	4	8	5
Utah	12	13	10	11	15	14	16
Vermont	12	13	10	11	15	14	16
<b>Virginia</b>	<b>4,984</b>	<b>5,191</b>	<b>5,190</b>	<b>5,153</b>	<b>5,013</b>	<b>4,828</b>	<b>4,731</b>
Washington	12	24	13	11	13	17	12
West Virginia	13	12	12	6	8	15	17
Wisconsin	25	25	25	21	21	17	14
Wyoming	2	1	2	1	0	1	1
Unknown	493	394	442	428	467	403	435
American Territories	12	14	11	7	4	2	2
Foreign Countries	138	148	134	115	130	237	253
<b>Grand Total</b>	<b>7,547</b>	<b>7,709</b>	<b>7,722</b>	<b>7,571</b>	<b>7,590</b>	<b>7,553</b>	<b>7,530</b>

Note: Global education students are included from 1994 through 1996.

Source: SCHEV Fall Headcount Enrollment File.

Table 18: Fall Headcount Enrollment by State, 2000



NOTE: Enrollments from each state follow the format "number undergraduate/number graduate and first-professional."  
 SOURCE: SCHEV Headcount Enrollment File.



**Table 19: Fall Headcount Enrollment of Virginia Residents by City or County, 1997 - 2000**

City/County	1997		1998		1999		2000	
	Under-Grad	Grad. & 1st Prof.	Under-Grad	Grad. & 1st Prof.	Under-Grad	Grad. & 1st Prof.	Under-Grad	Grad. & 1st Prof.
Accomack County	23	1	24	0	18	0	16	0
Albemarle County	16	4	21	3	20	1	22	1
Alexandria City	156	19	157	15	143	16	140	13
Alleghany County	0	0	0	0	0	0	0	0
Amelia County	5	0	4	0	5	0	4	0
Amherst County	6	1	8	0	6	1	6	2
Appomattox County	5	0	4	0	3	0	5	10
Arlington County	98	16	98	15	88	16	86	10
Augusta County	9	1	10	1	11	1	10	2
Bath County	2	0	2	0	2	0	2	0
Bedford City	2	0	1	1	0	2	0	0
Bedford County	24	1	21	1	21	0	14	0
Bland County	2	0	3	0	2	0	2	0
Botetourt County	13	1	14	2	11	2	8	1
Bristol City	7	0	6	0	3	0	2	0
Brunswick County	5	0	2	0	2	0	3	0
Buchanan County	3	0	3	0	2	0	2	0
Buckingham County	5	0	5	0	5	0	4	0
Buena Vista City	3	0	2	1	1	1	0	1
Campbell County	7	1	5	1	6	1	6	1
Caroline County	7	1	7	1	10	0	8	0
Carroll County	2	0	0	0	0	0	1	0
Charles City County	2	8	1	4	2	6	0	5
Charlotte County	4	0	5	0	4	0	3	1
Charlottesville City	40	12	45	13	41	8	46	12
Chesapeake City	85	43	90	32	103	31	98	32
Chesterfield County	99	18	118	22	121	25	111	13
Clarke County	9	1	9	0	9	0	8	0
Clifton Forge City	1	0	0	0	0	0	0	0
Colonial Heights City	15	3	15	3	15	4	13	0
Covington City	0	0	1	0	1	0	3	0
Craig County	3	0	0	0	0	1	0	0
Culpeper County	10	0	15	0	18	1	18	3
Cumberland County	1	0	0	0	0	0	1	0
Danville City	27	0	29	1	24	1	24	0
Dickenson County	1	0	0	0	1	1	1	0
Dinwiddie County	2	2	3	1	2	0	1	2
Emporia City	1	1	1	1	1	1	0	2
Essex County	3	1	3	0	1	1	1	8
Fairfax City	160	15	148	14	154	12	151	8
Fairfax County	669	43	630	48	581	45	602	48
Falls Church City	75	1	66	5	54	3	60	3
Fauquier County	18	0	20	0	31	0	30	0
Floyd County	0	0	0	0	0	0	0	0
Fluvanna County	4	2	3	1	3	1	4	0
Franklin City	3	1	4	3	4	1	8	1
Franklin County	7	0	6	0	4	2	2	0
Frederick County	11	0	9	0	4	1	8	1

continued on the following page

Table 19: Fall Headcount Enrollment of Virginia Residents by City or County, 1997 - 2000 (continued)

City/County	1997		1998		1999		2000	
	Under-Grad	Grad. & 1st Prof.	Under-Grad	Grad. & 1st Prof.	Under-Grad	Grad. & 1st Prof.	Under-Grad	Grad. & 1st Prof.
Fredericksburg City	53	5	56	5	57	4	47	3
Galax City	2	0	3	0	4	0	4	0
Giles County	2	1	1	1	0	0	0	0
Gloucester County	26	43	22	41	19	41	23	52
Goochland County	4	1	8	1	8	1	7	1
Grayson County	0	0	0	0	0	0	0	0
Greene County	0	0	0	0	0	0	0	0
Greensville County	0	0	0	0	0	0	0	0
Halifax County	3	0	2	0	4	0	5	0
Hampton City	82	52	71	56	71	65	70	55
Hanover County	44	11	52	6	57	16	56	17
Harrisonburg City	20	4	19	2	29	2	22	2
Henrico County	32	13	23	12	24	11	20	10
Henry County	13	0	11	1	10	1	10	1
Highland County	0	0	0	0	0	0	0	0
Hopewell City	10	3	13	0	13	1	15	0
Isle of Wight County	8	6	9	8	10	9	10	11
James City County	4	3	2	6	3	3	2	4
King and Queen County	0	0	0	0	1	0	1	2
King George County	5	0	3	0	3	0	3	1
King William County	3	3	5	2	6	5	5	4
Lancaster County	13	2	14	1	12	7	11	3
Lee County	4	0	1	1	2	1	1	0
Lexington City	8	0	8	0	8	1	6	2
Loudoun County	57	8	54	7	62	7	67	6
Louisa County	5	0	5	0	7	0	7	0
Lunenburg County	1	1	1	0	0	0	0	1
Lynchburg City	41	4	40	2	41	3	34	2
Madison County	9	0	9	0	6	0	4	0
Manassas City	61	2	46	4	44	2	47	3
Manassas Park City	2	0	2	0	2	0	2	0
Martinsville City	7	0	6	0	7	1	9	2
Mathews County	6	7	9	6	11	6	10	7
Mecklenburg County	10	0	13	0	5	0	8	0
Middlesex County	11	3	7	4	5	3	3	6
Montgomery County	28	6	26	3	24	1	17	1
Nelson County	8	2	4	2	6	1	6	1
New Kent County	14	8	17	13	14	19	17	11
Newport News City	88	140	114	111	104	105	108	105
Norfolk City	53	43	58	36	59	38	68	29
Northampton County	5	0	6	1	4	0	9	0
Northumberland County	3	2	3	1	2	0	2	2
orton City	2	0	1	0	1	0	1	0
Pottoway County	6	1	7	1	6	2	5	0
Prince George County	6	0	7	0	9	0	8	0
Rage County	8	1	7	0	5	0	5	0
Ratrick County	4	0	3	0	3	0	3	0
Petersburg City	10	2	10	1	12	5	13	1
Pittsylvania County	5	0	3	0	2	0	1	0
Roanoke City	16	16	13	16	12	11	14	14

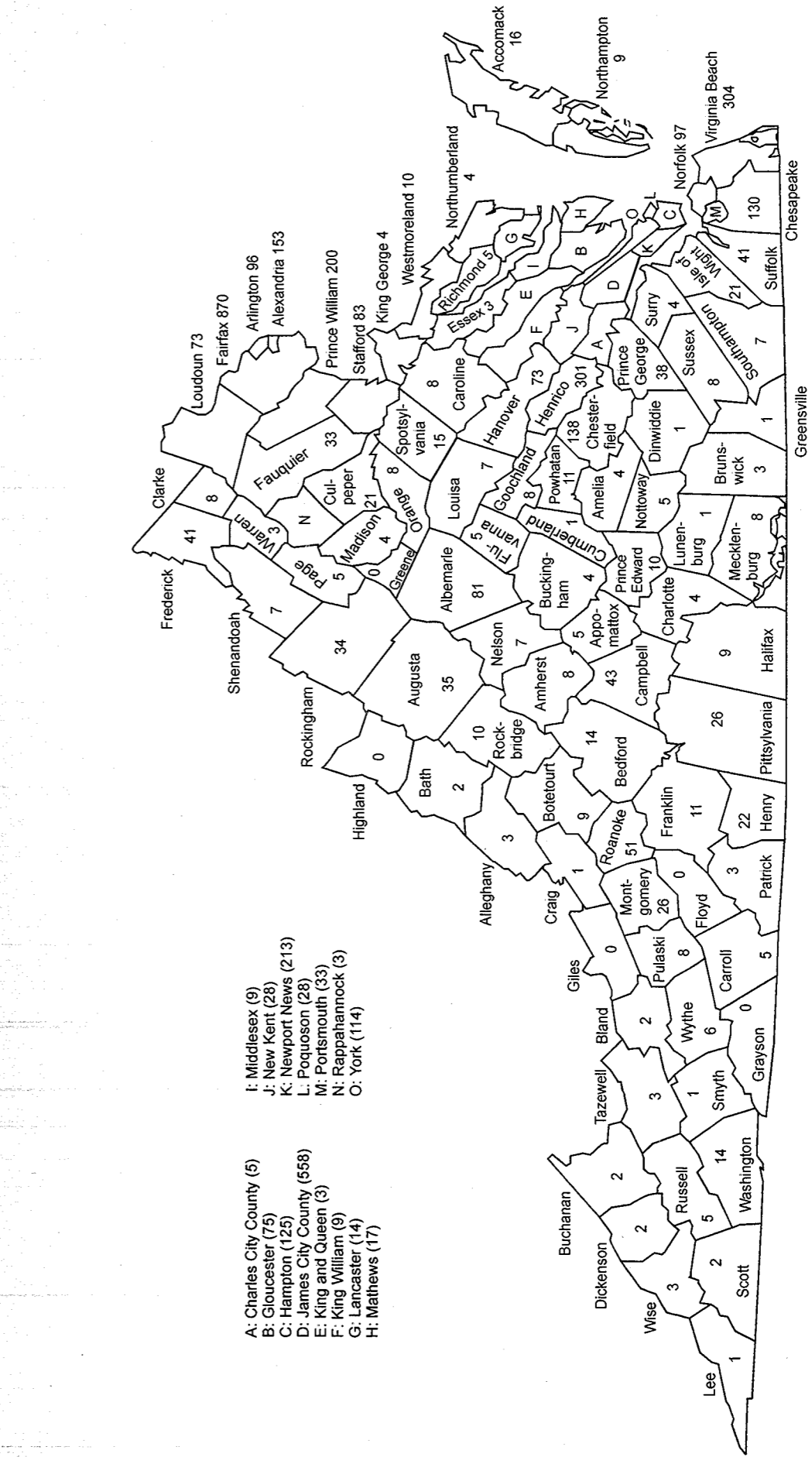
continued on the following page

Table 19: Fall Headcount Enrollment of Virginia Residents by City or County, 1997 - 2000 (continued)

City/County	1997		1998		1999		2000	
	Under-Grad	Grad. & 1st Prof.	Under-Grad	Grad. & 1st Prof.	Under-Grad	Grad. & 1st Prof.	Under-Grad	Grad. & 1st Prof.
Portsmouth City	21	11	32	9	32	6	29	
Powhatan County	6	1	7	2	10	3	9	
Prince Edward County	6	2	7	3	6	1	8	
Prince George County	8	3	6	2	5	3	7	
Prince William County	114	7	124	8	123	10	142	
Pulaski County	6	1	7	1	8	1	8	
Radford City	11	1	12	0	6	1	6	
Rappahannock County	5	0	5	0	2	1	2	
Richmond City	242	90	222	95	216	85	190	
Richmond County	3	3	4	0	4	1	4	
Roanoke City	63	5	43	6	32	8	32	
Roanoke County	1	1	3	1	4	0	4	
Rockbridge County	0	0	0	0	0	0	1	
Rockingham County	14	0	14	0	13	0	10	
Russell County	7	0	8	0	3	0	4	
Salem City	12	1	12	1	11	1	8	
Scott County	0	0	0	0	0	0	2	
Shenandoah County	11	0	10	0	6	0	7	
Smyth County	4	0	6	0	3	0	1	
South Boston City	2	0	2	0	4	0	4	
Southampton County	8	0	8	0	7	0	7	
Spotsylvania County	7	0	10	0	12	0	12	
Stafford County	22	2	27	2	24	0	28	
Staunton City	8	0	11	0	15	0	14	
Suffolk City	24	11	24	15	23	17	27	
Surry County	2	3	3	1	3	1	3	
Sussex County	2	1	3	1	2	1	4	
Tazewell County	7	0	5	0	4	0	3	
Virginia Beach City	256	72	252	72	246	77	231	
Warren County	6	1	4	0	3	0	3	
Washington County	15	0	16	0	11	1	12	
Waynesboro City	10	1	12	2	9	2	7	
Westmoreland County	10	1	10	1	9	1	8	
Williamsburg City	242	454	247	406	242	385	234	
Winchester City	28	1	30	4	28	3	30	
Wise County	2	0	2	0	1	0	2	
Wythe County	5	1	7	2	6	2	5	
York County	44	68	57	68	58	65	56	
Unknown	80	55	74	33	57	15	84	
<b>Grand Total</b>	<b>3,766</b>	<b>1,387</b>	<b>3,738</b>	<b>1,275</b>	<b>3,579</b>	<b>1,249</b>	<b>3,568</b>	<b>1,160</b>

Source: SCHEV Fall Headcount File.

Table 20: Fall Headcount Enrollment of Virginia Residents, 2000



Note: These cities are counted with these counties: Bedford - Bedford; Bristol - Washington; Buena Vista and Lexington - Rockbridge; Charlottesville - Albemarle; Clifton Forge and Covington - Alleghany; Colonial Heights - Chesterfield; Danville - Pittsylvania; Emporia - Greensville; Fairfax and Falls Church - Fairfax; Franklin - Franklin; Fredericksburg - Stafford; Galax - Carroll; Harrisonburg - Rockingham; Hopewell and Petersburg - Prince George; Lynchburg - Campbell; Manassas and Manassas Park - Prince William; Martinsville - Henry; Norton - Wise; Radford - Montgomery; Richmond - Henrico; Roanoke and Salem - Roanoke; South Boston - Halifax; Staunton and Waynesboro - Augusta; Williamsburg - James City; and Winchester - Frederick. In addition, 129 in-state students have an unknown county.

Source: SCHEV Fall Headcount File.

**Table 21: Fall Headcount Enrollment by Race and Ethnicity, 2000**

	African American		Asian		Hispanic		Native American		International Students		White		Total Count
	Count	%	Count	%	Count	%	Count	%	Count	%	Count	%	
<b>Undergraduate</b>													
Arts and Sciences	236	5%	336	7%	148	3%	17	0%	62	1%	4,274	84%	5,073
Business	15	4%	35	8%	6	1%	2	0%	10	2%	348	84%	416
Unclassified	1	1%	5	5%	2	2%	0	0%	17	18%	71	74%	96
Total Undergraduate	252	5%	376	7%	156	3%	19	0%	89	2%	4,693	84%	5,585
<b>Graduate</b>													
Arts and Sciences	31	8%	12	3%	9	2%	3	1%	67	17%	271	69%	393
Business	8	2%	19	5%	9	2%	3	1%	57	15%	297	76%	393
Education	33	10%	6	2%	3	1%	0	0%	2	1%	298	87%	342
Graduate Law	0	0%	0	0%	0	0%	0	0%	5	100%	0	0%	5
Marine Science	4	3%	6	5%	2	2%	0	0%	16	13%	98	78%	126
Unclassified	26	16%	0	0%	4	2%	1	1%	10	6%	124	75%	165
Total Graduate	102	7%	43	3%	27	2%	7	0%	157	11%	1,088	76%	1,424
<b>First Professional</b>													
Law	53	10%	20	4%	9	2%	5	1%	7	1%	427	82%	521
<b>Grand Total</b>	<b>407</b>	<b>5%</b>	<b>439</b>	<b>6%</b>	<b>192</b>	<b>3%</b>	<b>31</b>	<b>0%</b>	<b>253</b>	<b>3%</b>	<b>6,208</b>	<b>82%</b>	<b>7,530</b>

**Table 22: Fall Headcount Enrollment of African American Students, 1996 - 2000**

	1996		1997		1998		1999		2000	
	Count	Percent	Count	Percent	Count	Percent	Count	Percent	Count	Percent
<b>Undergraduate</b>										
Arts and Sciences	312	6%	280	5%	237	5%	221	4%	236	5%
Business	16	5%	16	4%	17	4%	20	5%	15	4%
Unclassified	8	6%	4	7%	1	1%	1	1%	1	1%
Total Undergraduate	336	6%	300	5%	255	5%	242	4%	252	5%
<b>Graduate</b>										
Arts and Sciences	26	6%	28	7%	32	8%	31	8%	31	8%
Business	12	3%	7	2%	12	3%	10	2%	8	2%
Education	33	8%	32	9%	38	12%	38	11%	33	10%
Graduate Law	0	0%	0	0%	0	0%	0	0%	0	0%
Marine Science	4	3%	3	3%	5	4%	4	3%	4	3%
Unclassified	20	9%	12	6%	15	9%	24	13%	26	16%
Total Graduate	95	6%	82	6%	102	7%	107	7%	102	7%
<b>First Professional</b>										
Law	72	14%	78	15%	76	14%	53	10%	53	10%
<b>Grand Total</b>	<b>503</b>	<b>7%</b>	<b>460</b>	<b>6%</b>	<b>433</b>	<b>6%</b>	<b>402</b>	<b>5%</b>	<b>407</b>	<b>5%</b>

Note: Percentages refer to percents of school totals. Global education students are included in 1996. See table 27 for information concerning global education students.

Source: SCHEV Fall Headcount Enrollment File.

Table 23: Fall Headcount Enrollment of Female Students, 1996 - 2000

	1996		1997		1998		1999		2000	
	Count	Percent	Count	Percent	Count	Percent	Count	Percent	Count	Percent
<b>Undergraduate</b>										
Arts and Sciences	3,089	60%	3,094	60%	3,063	60%	2,964	58%	2,946	58%
Business	148	46%	190	49%	201	51%	189	48%	186	45%
Unclassified	75	58%	41	67%	62	62%	45	54%	54	56%
Total Undergraduate	3,312	59%	3,325	60%	3,326	59%	3,198	58%	3,186	57%
<b>Graduate</b>										
Arts and Sciences	199	46%	185	48%	187	49%	188	49%	177	45%
Business	105	28%	100	26%	118	29%	126	30%	120	31%
Education	330	77%	286	78%	250	76%	276	80%	262	77%
Graduate Law	2	67%	3	50%	3	75%	2	67%	1	20%
Marine Science	53	43%	52	43%	58	46%	62	49%	68	54%
Unclassified	150	68%	135	63%	107	63%	127	67%	123	75%
Total Graduate	839	53%	761	51%	723	51%	781	53%	751	53%
<b>First Professional</b>										
Law	244	46%	238	46%	237	45%	228	43%	226	43%
<b>Grand Total</b>	<b>4,395</b>	<b>57%</b>	<b>4,324</b>	<b>57%</b>	<b>4,286</b>	<b>56%</b>	<b>4,207</b>	<b>56%</b>	<b>4,163</b>	<b>55%</b>

Note: Percentages refer to percents of school totals. Global education students are included in 1996. See table 27 for information concerning global education students.

Table 24: Fall Headcount Enrollment by Full-Time/Part-Time Status, 1997 - 2000

	1997		1998		1999		2000					
	Full-Time Count	Part-Time Count	Full-Time Count	Part-Time Count	Full-Time Count	Part-Time Count	Full-Time Count	Part-Time Count				
<b>Undergraduate</b>												
Arts and Sciences	5,058	99%	58	5,093	99%	53	5,001	99%	72	5,031	99%	42
Business	382	99%	4	391	99%	5	388	98%	8	413	99%	3
Unclassified	4	7%	57	13	13%	87	15	18%	68	13	14%	83
Total Undergraduate	5,444	98%	119	5,497	97%	145	5,404	97%	148	5,457	98%	128
<b>Graduate</b>												
Arts and Sciences	350	87%	52	339	85%	59	355	87%	55	348	89%	45
Business	237	61%	153	258	62%	155	274	66%	140	258	66%	135
Education	160	43%	209	154	47%	174	172	50%	175	181	53%	161
Graduate Law	6	100%	0	4	100%	0	3	100%	0	5	100%	0
Marine Science	102	85%	18	114	90%	13	108	86%	18	115	91%	11
Unclassified	20	10%	180	7	5%	145	10	6%	155	15	9%	150
Total Graduate	875	59%	612	876	62%	546	922	63%	543	922	65%	502
<b>First Professional</b>												
Law	521	100%	0	526	100%	0	536	100%	0	521	100%	0
<b>Grand Total</b>	<b>6,840</b>	<b>90%</b>	<b>731</b>	<b>6,899</b>	<b>91%</b>	<b>691</b>	<b>6,862</b>	<b>91%</b>	<b>691</b>	<b>6,900</b>	<b>92%</b>	<b>630</b>

Note: Percentages refer to percents of school totals. Global education students are excluded. See table 27 for information concerning global education students.

Source: SCHEV Fall Headcount Enrollment File.