



*The  
1945-46  
Indian Handbook*

## IDENTIFICATION

*College of William and Mary*  
*Williamsburg, Va.*

Name.....

Home Address.....

College Address.....

Telephone No..... Class.....

In case of accident, notify.....

.....

.....

*The Indian Handbook*

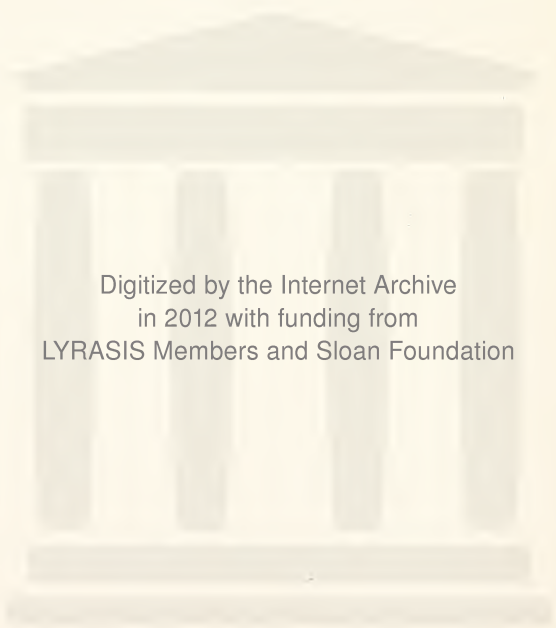
1945 - 1946

FOR

THE CLASS OF 1949

OF

The College of William and Mary  
in Virginia



Digitized by the Internet Archive  
in 2012 with funding from  
LYRASIS Members and Sloan Foundation

# TABLE OF CONTENTS

## SECTION I—INTRODUCTION

	PAGE
College Calendar .....	6
President's Message .....	9
Traditions .....	10
Historical Facts .....	11
Priorities .....	13
Songs .....	14
Library .....	17
Church Directory .....	19
General Information .....	21
College Regulations .....	23
Rules for Freshmen .....	25

## SECTION II—ACTIVITIES

Theatre, Music, Exhibitions, Concert Series .....	27
Publications .....	29
College Honorary Societies .....	30
Professional Societies .....	31
Interest Groups .....	32
Social Societies .....	33
Y. W. C. A. ....	33
War Council .....	34
Red Cross Unit .....	35
Religious Organizations .....	36

## SECTION III—STUDENT GOVERNMENT

Student Body Officers .....	39
Constitution .....	40
Student Assembly By-Laws .....	43
Joint Honor Councils .....	56
Women's Student Cooperative Government Association .....	58
Judicial Committee .....	60

#### SECTION IV—FRATERNITIES AND SORORITIES

	PAGE
A Word About Greek Letters .....	61
Men's Social Clubs .....	61
Message from the Pan-Hellenic Council .....	67
Rushing Rules .....	71
Women's Social Sororities .....	76

#### SECTION V—ATHLETICS

Physical Education .....	85
Athletics for Men .....	86
Athletics for Women .....	87

#### SECTION VI—DIRECTORY

Officers of Administration .....	89
Faculty .....	89
College Telephone Numbers.....	Inside Cover

# CALENDAR

## 1945

JANUARY							APRIL							JULY							OCTOBER						
S	M	T	W	T	F	S	S	M	T	W	T	F	S	S	M	T	W	T	F	S	S	M	T	W	T	F	S
7	8	9	10	11	12	13	8	9	10	11	12	13	8	9	10	11	12	13	7	8	9	10	11	12			
14	15	16	17	18	19	20	15	16	17	18	19	20	15	16	17	18	19	20	14	15	16	17	18	19			
21	22	23	24	25	26	27	22	23	24	25	26	27	22	23	24	25	26	27	21	22	23	24	25	26			
28	29	30	31	..	..	..	29	30	..	..	..	..	29	30	31	..	..	..	28	29	30	31	..	..			

FEBRUARY							MAY							AUGUST							NOVEMBER						
S	M	T	W	T	F	S	S	M	T	W	T	F	S	S	M	T	W	T	F	S	S	M	T	W	T	F	S
..	4	5	6	7	8	9	1	2	3	4	5	6	1	2	3	4	5	6	1	2	3	4	5	6			
11	12	13	14	15	16	17	13	14	15	16	17	18	12	13	14	15	16	17	11	12	13	14	15	16			
18	19	20	21	22	23	24	20	21	22	23	24	25	19	20	21	22	23	24	18	19	20	21	22	23			
25	26	27	28	..	..	..	27	28	29	30	31	..	26	27	28	29	30	31	25	26	27	28	29	30			

MARCH							JUNE							SEPTEMBER							DECEMBER						
S	M	T	W	T	F	S	S	M	T	W	T	F	S	S	M	T	W	T	F	S	S	M	T	W	T	F	S
4	5	6	7	8	9	10	1	2	3	4	5	6	1	2	3	4	5	6	1	2	3	4	5	6			
11	12	13	14	15	16	17	10	11	12	13	14	15	9	10	11	12	13	14	9	10	11	12	13	14			
18	19	20	21	22	23	24	17	18	19	20	21	22	16	17	18	19	20	21	16	17	18	19	20	21			
25	26	27	28	29	30	31	24	25	26	27	28	29	30	31	..	..	..	..	30	31	..	..	..	..			

## 1946

JANUARY							APRIL							JULY							OCTOBER						
S	M	T	W	T	F	S	S	M	T	W	T	F	S	S	M	T	W	T	F	S	S	M	T	W	T	F	S
..	6	7	8	9	10	11	..	7	8	9	10	11	7	8	9	10	11	12	6	7	8	9	10	11			
13	14	15	16	17	18	19	14	15	16	17	18	19	14	15	16	17	18	19	13	14	15	16	17	18			
20	21	22	23	24	25	26	21	22	23	24	25	26	21	22	23	24	25	26	20	21	22	23	24	25			
27	28	29	30	31	..	..	28	29	30	..	..	..	28	29	30	31	..	..	27	28	29	30	31	..			

FEBRUARY							MAY							AUGUST							NOVEMBER						
S	M	T	W	T	F	S	S	M	T	W	T	F	S	S	M	T	W	T	F	S	S	M	T	W	T	F	S
3	4	5	6	7	8	9	..	..	..	..	..	..	4	5	6	7	8	9	3	4	5	6	7	8			
10	11	12	13	14	15	16	12	13	14	15	16	17	11	12	13	14	15	16	10	11	12	13	14	15			
17	18	19	20	21	22	23	19	20	21	22	23	24	18	19	20	21	22	23	17	18	19	20	21	22			
24	25	26	27	28	..	..	26	27	28	29	30	31	25	26	27	28	29	30	24	25	26	27	28	29			

MARCH							JUNE							SEPTEMBER							DECEMBER						
S	M	T	W	T	F	S	S	M	T	W	T	F	S	S	M	T	W	T	F	S	S	M	T	W	T	F	S
3	4	5	6	7	8	9	1	2	3	4	5	6	1	2	3	4	5	6	1	2	3	4	5	6			
10	11	12	13	14	15	16	9	10	11	12	13	14	8	9	10	11	12	13	8	9	10	11	12	13			
17	18	19	20	21	22	23	16	17	18	19	20	21	15	16	17	18	19	20	15	16	17	18	19	20			
24	25	26	27	28	29	30	23	24	25	26	27	28	22	23	24	25	26	27	22	23	24	25	26	27			
31	..	..	..	..	..	..	30	..	..	..	..	..	29	30	..	..	..	..	29	30	31	..	..	..			

# Introduction

## COLLEGE CALENDAR\*

1945-1946

1945

*First Semester*

SEPTEMBER 19-20	ORIENTATION PERIOD (WEDNESDAY - THURSDAY)
SEPTEMBER 21-22	REGISTRATION (FRIDAY-SATURDAY)
SEPTEMBER 24	BEGINNING OF CLASSES: 8 A. M. (MONDAY)
SEPTEMBER 28	AUTUMN CONVOCATION: 11 A. M. (FRIDAY)
NOVEMBER 8	HONORS CONVOCATION: 10 A. M. (THURSDAY)
NOVEMBER 29	THANKSGIVING HOLIDAY (THURSDAY)
DECEMBER 21	BEGINNING OF CHRISTMAS RECESS: 3 P. M. (FRIDAY)

1946

JANUARY 4	END OF CHRISTMAS RECESS: 12 NOON (FRIDAY)
JANUARY 17	END OF CLASSES: 4 P. M. (THURSDAY)
JANUARY 18-19	PRE-EXAMINATION PERIOD (FRIDAY-SATURDAY)
JANUARY 21-31	MID-YEAR EXAMINATIONS (MONDAY - THURSDAY)

*Second Semester*

FEBRUARY 1-2	REGISTRATION (FRIDAY-SATURDAY)
FEBRUARY 4	BEGINNING OF CLASSES: 8 A. M. (MONDAY)
FEBRUARY 8	CHARTER DAY CONVOCATION: 11 A. M. (FRIDAY)

---

\* On account of the war the college calendar is tentative.



MARCH 27	BEGINNING OF SPRING RECESS: 3 P. M. (WEDNESDAY)
APRIL 4	END OF SPRING RECESS: 12 NOON (THURSDAY)
MAY 23	END OF CLASSES: 4 P. M. (THURSDAY)
MAY 24-25	PRE-EXAMINATION PERIOD (FRIDAY-SATURDAY)
MAY 27-JUNE 6	FINAL EXAMINATIONS (MONDAY-THURSDAY)
JUNE 7	CLASS DAY (FRIDAY)
JUNE 8	ALUMNI DAY (SATURDAY)
JUNE 9	BACCALAUREATE AND COMMENCEMENT DAY (SUNDAY)

*Summer Semester*

JUNE 14	BEGINNING OF SUMMER SEMESTER (FRIDAY)
SEPTEMBER 12	END OF SUMMER SEMESTER (THURSDAY)



PRESIDENT JOHN E. POMFRET,  
*Twenty-first president of the College of William and  
Mary in Virginia*

## TO THE CLASS OF 1949

In behalf of the Faculty and Administration of the College I am privileged to extend to the entering class a hearty welcome.

For the past four years life at College has been far from normal. The work of a thousand students has been interrupted by war, and a large proportion of the Faculty is absent in war service. The Navy Training School (Chaplains) is a reminder that the College is still a direct part of the war effort. Many of the undergraduate activities, too, have been directed toward the war effort.

This class may be the first to witness a return to normalcy. The readjustment to peace will pose difficulties for the College as formidable as the shift to a war-time status. The class of 1949 will certainly be called upon to welcome many boys who have been away for two, three, or four years. By exhibiting a spirit of cooperation and cordiality your class will be in a position to make a large contribution to the College during a transition period.

The first task, however, is to make your own personal adjustment to the campus. You will be somewhat surprised by the amount of freedom you enjoy with respect to the conduct of your own affairs. Your time is your own, but you have the adult responsibility of using it wisely. Your first responsibility and challenge lies in the direction of mastering your academic obligations. From this you will derive an immense personal satisfaction. Your second challenge will be to take part in one or two student activities that will enable you to use your personal talents in making a contribution to the life of the College community. The opportunities are legion and, if conducted from the viewpoint of unselfish interest, you will also gain a satisfaction that will make your life at William and Mary rewarding and worthwhile.

JOHN E. POMFRET, *President.*

## TRADITIONS AT WILLIAM AND MARY

There are many traditions here. They will undoubtedly be pointed out to you many times in the course of your college life. We ask, however, that you consider only five traditions, five customs which are not limited to past glories but which are applicable to your present day life as a college student and to your future life as an alumnus of this College.

The first tradition is the tradition of belonging. You will have the feeling of ownership the minute you enter the College yard, seeing for the first time the quiet dignity of the Wren Building, the tall, majestic trees, the cool sweep of the Sunken garden. Who comes here belongs here. This is the first tradition.

The second tradition is the tradition of fellowship. There is a custom here of the universal greeting, to professors, to fellow students, to visitors on our campus—all of whom may be strangers. Here we speak because we want to, because we feel a common ownership, a common bond closely related to the tradition of belonging.

The tradition of scholarship is the third tradition. Great scholars have gone before you here and great scholars will undoubtedly follow. The choice of study is yours, and you can gain much or you can gain little, depending upon you. College serves only as a means of stimulation, but the desire to learn must come from the individual.

The fourth tradition is the tradition of honor. This tradition is perhaps William and Mary's most revered for it is a tradition of thought and conduct. In another part of this book, you will find a clear statement of the principles, purposes, and ideals of the honor system. It is enough to say here that fundamentally your life is governed by your own sense of honor and by it you will be judged.

The fifth and most important tradition, to which all the others contribute is the tradition of service. Only through a deep appreciation of the traditions of belonging, fellowship, scholarship, and honor fostered during the period of College residence can the real understanding of service be attained—service not only to the College and community, but to the broad principles of democracy, for which the College of William and Mary has long been known.

## HISTORICAL FACTS ABOUT THE COLLEGE OF WILLIAM AND MARY

- 1693—On February 8th, a charter was granted by King William and Queen Mary of England, for the establishment of the College of William and Mary in Virginia. In this Charter the Rev. James Blair was named president.
- 1705—The Wren Building was destroyed by fire. It was rebuilt with the original walls and was completed about 1716.
- 1723—The Brafferton Building was erected.
- 1750—The Flat Hat Club, the first college club at William and Mary of which there is a record, was established.
- 1776—Phi Beta Kappa, the first Greek letter fraternity, was founded by students of the College.
- 1779—The College became a university, introducing into the United States the elective system and establishing schools of Modern Languages, Law, and Medicine.
- 1781—The British campaign in Virginia caused a suspension of classes.
- 1801—The statue of Lord Botetourt, which originally stood at the Capitol, was purchased by the faculty and placed in the center of the College Yard.
- 1824-1825—An attempt to remove the College to Richmond, as a means of increasing enrollment, failed.
- 1859—On the 166th anniversary of the founding of the College, the interior of the Wren Building was burned a second time when some early documents, including the original charter, all of the library, and the chemical laboratory were destroyed.
- 1861—The College was suspended in May on account of the Civil War. In 1862 the Wren Building, while occupied by Federal soldiers, suffered a third fire.

- 1865—The College reopened; but it was not until 1869 that the Wren Building was entirely rebuilt, the fourth building on the original foundation and with the original walls.
- 1881—The College was forced to suspend on account of financial difficulties.
- 1893—The United States Congress indemnified the College partially for its losses in the Civil War.
- 1906—The property belonging to the College was transferred to the State of Virginia. Since 1906 the College has been under the direction of a Board of Visitors appointed by the Governor of Virginia.
- 1918—Women were admitted to the College by act of the General Assembly.
- 1919-1934—Fifteen new buildings were erected on the campus. Many new courses were added. The enrollment increased from 150 to 1,300 students.
- 1928-1932—The three earliest buildings of the College were restored to their original appearance through the generosity of John D. Rockefeller, Jr.
- 1943—With simple ceremonies, appropriate to war-time, the College, on February 8, celebrated its two hundred and fiftieth anniversary, inaugurated John Edwin Pomfret as its twenty-first president, and invested John Stewart Bryan as its fourth American chancellor.

## **PRIORITIES, OF THE COLLEGE OF WILLIAM AND MARY**

The first American college to receive a charter from the crown; this was dated 1693, under seal of the Privy Council.

The first and only American college to be granted a coat of arms from the Herald's College, 1694.

The first American college to have a full faculty of president, six professors, writing master, and usher.

The first medals awarded in America as collegiate prizes were those donated by Lord Botetourt, 1771.

The first Greek letter fraternity was founded at William and Mary on December 5, 1776. This fraternity, the Phi Beta Kappa, is the great honor society of the foremost institutions of learning in America.

The first honor system.

The first elective system of studies, 1779.

The first schools of Modern Languages and of Law were established in 1779, under the influence of Jefferson.

The first college to teach Political Economy was William and Mary in 1784.

The first school of History was founded here in 1803.

## COLLEGE SONGS

### *Alma Mater*

Hark, the students' voices swelling,  
Strong and true and clear,  
Alma Mater's love are telling  
Ringing far and near.

#### CHORUS

William and Mary, loved of old,  
Hark, upon the gale  
Hear the thunder of our chorus,  
Alma Mater—hail!

All thy sons are faithful to thee  
Through their college days,  
Singing loud from hearts that love thee  
Alma Mater's praise.

Iron shod or golden sandaled  
Shall the years go by;  
Still our hearts shall weave about thee  
Love that cannot die.

God, our Father, hear our voices,  
Listen to our cry,  
Bless the college of our fathers,  
Let her never die!

J. S. WILSON, '02.



## *William and Mary Hymn*

Beneath thy trees, within thy halls,  
We come, dear school, with praise for thee,  
To pledge ourselves, whate'er befalls—  
To pledge unfailing loyalty.  
Our hearts are with thee, dear William and Mary,  
However far we stray.  
Our noble college, hear us now—  
Thy children sing to thee today!

Dear school, thou'rt old in years and fame,  
And richly old in honors, too.  
Time shall not dull the shining name  
Whose gleam our songs will e'er renew.  
And as years go by, dear William and Mary,  
Thy fame will never cease.  
But each new year rejoice to see  
Thy children's praise to thee increase.

We honor thee, not for our gain  
But to make known thy majesty,  
Thy truth and courage that remain  
However harsh the fates may be.  
As through troublous years, dear William and Mary,  
Our country fought, so thou hast fought and won,  
And lived to hear thy children singing to thee now.

O thou, our guardian and our guide,  
Renew our courage every hour,  
And keep thy spirit by our side  
To aid us with its watchful power.  
Throughout all our lives, dear William and Mary,  
We pledge our loyalty.  
Dear college, now and evermore thy children cry  
"All Hail to Thee!"

JEANNE ROSE, '33.

G. M. SMALL.

## FOOTBALL SONGS

### *Fight, Fight, Fight for the Indians*

Oh, we will fight, fight, fight for the Indians  
When the Indian Team appears;  
We will pull like hell for the Indians  
When they hear our mighty cheers.

Wah-Hoo-Wah!

We will circle the ends for the Indians,  
And we'll romp right down the field—  
Touchdown! Touchdown! Indians!  
And—————line will surely yield.

### *Indian Warrior Song*

#### *Wa-Hoo*

(Chorus)

Sing a song to our fighting men,  
A song of victory  
Sing along while they win again  
For William and Mary.  
The brave of the bravest, fleet and strong,  
They're going to win, it won't take long, so  
Sing a song and our praise renew  
To our fighting men and Wa-Hoo.

## THE LIBRARY

The Library of the College contains about 191,000 catalogued volumes, and receives regularly 1244 periodicals. Students are allowed to go freely to the stack rooms to select the books they need, or to browse at leisure.

The Library is open on week days from 8:00 a. m. until 10:00 p. m. except from 6:00-7:00 p. m. On Saturdays, it is closed after 6:00 p. m.; Sunday hours are 2:00-6:00 p. m. and 7:00-10:00 p. m.

Freshmen should become acquainted with the War Memorial Book Shelf and the unusual Records Collection. The first contains a selection of recently published books of significance. These are exhibited on special shelves in the Saunders Reading Room. The second is a fine collection of recordings of classical music. Both collections were established by the Friends of the College of William and Mary for student use.

The principles of the Honor System are to be observed in the Library. The stealing of books from the Library is considered an offense similar to the theft of other property on the campus. Lying or any form of deceit in regard to the use of the reserved books or to the borrowing of books is considered an infraction of the Honor System and will be reported to the Honor Councils.

The Library offers to each freshman guidance by a professionally trained librarian in the preparation of his first term paper. The purpose of this is to acquaint him with the resources of the library. An appointment for this service should be scheduled at the circulation desk.

1. The Student Government of the College requires that a student in the Library rooms, should forbear unnecessary and loud talking, in order that he may not attract attention and disturb others.

2. All books borrowed from the Library except reserved books must be charged at the circulation desk.

3. A book may be kept out for two weeks, subject to a fine of two cents per day for every day over that time, if the book has not been renewed. If necessary, a book may be recalled by the librarian at any time.

4. Books which are on reserve may be borrowed from the Library at 9:00 p. m., to be returned by 9:15 a. m. the next morning; or 5:30 p. m. Saturday, to be returned by 2:30 p. m. Sunday. A fine of twenty-five cents for each book will be charged if it is not returned on time and an additional charge of five cents per hour until it is returned.

5. Books in the reference department must not be taken out of the building at any time.

6. Current numbers of periodicals may be borrowed from the Library between 9 p. m. and 10 p. m. to be returned by 9:15 a. m. the following morning. A fine of fifty cents will be charged on each periodical which is returned after 9:15 a. m. and ten cents per hour for each additional hour until it is returned to the periodical desk. Not more than three periodicals or three issues of a single periodical may be borrowed by one person overnight.

## CHURCH DIRECTORY

### *Williamsburg Baptist Church*

Rev. Archibald F. Ward, Jr., Pastor

Regular Services: Sunday

9:45 A. M.	Sunday School
11:00 A. M.	Morning Worship
6:45 P. M.	Young Peoples Societies
8:00 P. M.	Evening Worship

### *Church of Saint Bede (Catholic)*

Richmond Road at Bright St.

Rev. Thomas J. Walsh, Pastor

Address: College Terrace

Holy Mass: Sundays

9:30 A. M. and 11:00 A. M.

Sunday School during school year at 10:15 A. M.

Mass is celebrated on Holydays at 7 A. M. and 9 A. M.

Daily Mass at 7:30 A. M.

Gibbons Club, Every other Thursday, 7:30 P. M.

### *The Christian Science Society*

Sunday Services

Sunday School	9:45 A. M.
Service	11:00 A. M.
Wednesday Evening	8:00 P. M.

*Bruton Parish Church (Episcopal)*

Established 1633

Rev. Francis H. Craighill, Jr., Rector

Regular Services: Sunday

8:00 A. M.....	Holy Communion
9:30 A. M.....	Church School
11:00 A. M.....	Morning Service
5:15 P. M.....	Organ Recital
8:00 P. M.....	Evening Service

*Williamsburg Methodist Church*

(At the College Entrance)

Rev. Lewis F. Havermale, D.D., Minister

Regular Sunday Services:

9:45 A. M.....	Church School
11:00 A. M.....	Morning Worship
6:45 P. M.....	Wesley Foundation Service

Followed by informal fellowship

Members of the faculty and college students are most cordially invited to all of these services. Church office and reading rooms are open daily.

*Williamsburg Presbyterian Church*

Rev. Charles Pratt, Minister

Jean Goodwyn, Moderator

Sunday Services:

10:00 A. M.....	Student Bible Class
11:15 A. M.....	Morning Worship
6:00-7:30 P. M.....	Sunday Evening Supper Club

## GENERAL INFORMATION

### *The College Infirmary*

The David J. King Infirmary is located on South Boundary Street. Dr. B. I. Bell of Williamsburg, is the College Physician, and a staff of four nurses is on full-time duty. The nurses are: Sue M. Hartsfield, Annie L. Hall, Mrs. Edward F. Lodge and Virginia Northington.

Office hours for both men and women for infirmary treatment are: 7:30-10:00 a. m.; 12:30-2:30 p. m.; 6:30-8:00 p. m. For Dr. Bell, office hours are from 9-10:00 a. m. and from 6:30-7:30 p. m.

You are asked to observe these hours except in cases of emergency.

### *Laundry*

The College Laundry handles all of the student's laundry. Laundry will be collected at the dormitories on Monday, Tuesday and Wednesday mornings. Students will call at the Laundry to get their bundles between 8 a. m. and 5 p. m. any day of the week.

### *Mail*

Mail is delivered to all sorority houses. Students not residing in these buildings may either rent post office boxes at seventy-five cents a quarter, or receive their mail at the General Delivery window.

### *Lost and Found Office*

The Lost and Found Office is located in the Office of the Registrar, 116 Marshall-Wythe Hall. Students are requested to turn in all articles found to this office where they may be identified and recovered by their owners.

## *The Wigwam*

Text books, both new and used, and other student supplies may be obtained at *The Wigwam*. This store was established three years ago by the Board of Visitors for the use and convenience of the students. Net profits from the Wigwam and the Coca-Cola Concession are used for scholarships to students.

## *Student Emergency Loan Fund*

Small sums of money, up to \$10.00, may be borrowed at any time from the Work Study Office or from the Office of the Assistant Dean of Women. No interest is charged, but students should repay these loans as soon as possible in order that others may have the use of the money. Students having need of larger sums should consult the Auditor. The Student Emergency Loan Fund was established by The Friends of the College of William and Mary.



# COLLEGE REGULATIONS

## I.

The College assumes that men and women of college age are able and willing to maintain standards of self-discipline appropriate to membership in a college community. Therefore, the College purposely refrains from promulgating a rigid code of discipline. However, it reserves the right to take disciplinary measures compatible with its own best interests.

The discipline of the College is vested in the President by the action of the Board of Visitors. Cases involving minor infractions of discipline are handled through the offices of the Dean of Men and the Dean of Women respectively. Serious infractions are considered by the Discipline Committee, which represents administration, faculty, and students.

Aside from cheating, lying, and stealing, which fall under the Honor System, and infractions of the rules set down by the Women Students' Government Association and enforced by the Judicial Committee, the fundamental test for disciplinary action by the College authorities is whether the behavior complained of tends to throw discredit on the name of the College of William and Mary, or to manifest ungentlemanly conduct on the part of the students.

Hazing or the subjection of a student to any form of humiliating treatment is forbidden. The hazing of students in a state supported institution is a violation of the laws of the Commonwealth of Virginia. The College regards any evidence of the misuse of alcohol as a serious breach of accepted standards of deportment, and such abuse is punishable by probation or dismissal. By regulation of the Board of Visitors students are not allowed to have automobiles. Firearms may not be kept in the dormitories. They should be deposited in the office of the Dean of Men.

In general, the College strongly disapproves of all forms of vandalism and disturbance. Students who deface property or destroy fixtures will be dealt with summarily. The defacement or destruction of state property is a violation of the laws of the Commonwealth of Virginia. Students who through noisiness or other disturbance continually annoy their neighbors will be asked to withdraw.

Manners and behavior that would not be tolerated in the student's home cannot be tolerated in the classrooms, the dining halls, or the dormitories. The College highly approves of regular habits of living, and these include hours of rising and retiring that are compatible with regular classroom appointments and regular study habits. Long experience has shown a striking correlation between irregular and slovenly habits of living and lack of adequate performance in the classroom. Students are expected to keep their rooms reasonably clean and tidy at all times. It is important that the students' rooms be as presentable as the College grounds, the classrooms, and the dining halls.

## II.

Any undergraduate who marries without the full knowledge and consent of his or her parents will be required to withdraw. Such consent must be submitted to the College in writing by the parents prior to the marriage. Information concerning the regulations governing the admission and residence of married undergraduates may be obtained from the office of the Registrar.

## III.

Students are expected to be present at all their regularly scheduled classroom appointments. This rule applies especially to the periods just preceding and following the Thanksgiving, Christmas, and Spring Holidays. Absence at such times interferes with the orderly progress of academic work and is contrary to collective interests of the College. Students who do not conform to the catalogue regulations respecting attendance at such times will be placed on Absence Probation. Students also who fail to meet a registration date will be placed under such probation. For a second offense a student will be required to withdraw from the College.

Attendance rules do not apply to students on the Dean's List.

At the Christmas recess all residences for men and women students close at 12 noon on the day following the end of classes, and re-open at noon on the day before the resumption of classes. At the end of the session the residences will close at 12 noon on the day following graduation exercises. Students may not remain in the residences beyond 12 noon on the days specified. Exception will be made for those men who are employed,

in which case arrangements must be made with the Assistant Dean of Men.

#### IV.

Students desiring to have overnight guests in any one of the dormitories or sorority houses are required to make arrangements in advance with the Assistant Dean of Women or the Assistant Dean of Men, as the case may be.

All guests must be registered with the Housemothers in the residences for women students, and with the Proctors in the residences for men students. Visits of such guests should be limited to three days and confined to week-ends. Guests will not be entertained during the periods of examinations.

#### V.

In order to maintain a proper balance between hours of employment and academic loads, the College requires that all student employment on the campus or in the city be assigned by the Chairman of the Committee on Student Aid.

#### VI.

In the session 1945-46 and thereafter, the social standing of every student will be identical with the academic.

#### VII.

The College reserves the right at any time to suspend or dismiss a student whose conduct or academic standing is in its judgment unsatisfactory.

Registration as a student of the College of William and Mary implies that the student will familiarize himself with those general regulations governing the conduct of students, and that he will abide by such regulations so long as he remains a student of the College.

## **RULES AND REGULATIONS FOR FRESHMEN**

### I. Duc Caps.

- A. All Freshmen must wear duc caps when on the campus or in Williamsburg and vicinity:

1. From 7 A. M. to 10 P. M. on weekdays.
2. From 7 A. M. to 6 P. M. on Saturdays.
3. No caps worn on Sundays.
4. Freshmen men are required to wear black bow ties on Saturday nights and Sundays, and Freshmen women are required to wear ribbons on Saturday nights and Sundays.

## II. Campus Walks.

- A. Freshmen will use only the middle campus walk when going to and from town.
- B. When passing the statue of Lord Botetourt, Freshmen men are required to tip their hats, the women to curtsy.

## III. Attendance at College Functions.

- A. Freshmen are expected to attend all convocations, student body meetings, tribunal meetings, Freshmen class meetings and pep rallies.
  1. In cases of necessity, permission to be absent from any of the above meetings may be obtained from any member of the Tribunal.
- B. Freshmen are expected to attend all major home athletic contests and will:
  1. Occupy a cheering section designated for them.
  2. Use their megaphones at all games.
  3. Learn all college cheers and songs before the first home football game.

## IV. Courtesy and General Conduct.

- A. In accordance with William and Mary's long record of friendliness, it is expected that Freshmen will show due respect and courtesy to their classmates, to other students, to the faculty, and to visitors to the College.
- V. All Freshman rules will continue until Christmas vacation, but, if William and Mary beats Richmond in football, the rules will be suspended at once. Any violation of the above rules is subject to the action of the Tribunal.

# Activities

## Colonial Williamsburg

The educational facilities of Colonial Williamsburg are available to all students enrolled in the College of William and Mary.

Beginning with the opening of the term in September, students at the College of William and Mary will be issued complimentary tickets which will give them the privilege of visiting the Restored Buildings at their convenience and as often as they desire. This cooperative agreement with Colonial Williamsburg, Inc., will make it possible for students to have a unique opportunity to study colonial history and culture. Freshmen are urged to visit the Restored Buildings as early as possible during their freshman year in order that they may know what is available for them.

## *The William and Mary Theatre*

Four plays are produced during each college year by students under faculty direction. Presented during the 1944-45 season were: *Quality Street*, by Sir James M. Barrie; *Juno and the Paycock*, by Sean O'Casey; *Volpone*, by Ben Jonson (adapted by Stefan Zweig); *Private Lives*, by Noel Coward. Any interested student may try out for a part in the plays, or assist in the making of sets and costumes. Season tickets for the events may be purchased early in the school year.

## Music

The *College Choir*, open to men and women students, sings at the weekly chapel services and at many functions, such as convocations and special exercises.

*The William and Mary Chorus* offers additional opportunity for special choral work.

*The William and Mary Orchestra* presents programs of music during the course of the year. Students may take Orchestra, Choir and Chorus for regular college credit, if so desired.

*The Music Club*, a student organization, sponsors a series of Sunday afternoon concerts during the year.

*A College Dance Band* plays for the regular Saturday night dances and other social affairs. Students may try out for this organization.

### *Concert Series*

The *Friends of the College of William and Mary* make it possible for the College to bring a series of outstanding artists to the campus each year. Season tickets may be purchased by students at a special rate early in the College year.

### *Faculty Concerts*

The members of the Music Faculty will give a series of three or four concerts in Phi Beta Kappa Hall. There is no admission charged for these concerts.

### *Exhibitions*

The Department of Fine Arts brings to the College each year a series of exhibits of architecture, painting, sculpture, theatre, and industrial arts. These are open to the public and are shown in the foyer of Phi Beta Kappa Hall. The final exhibition each year is devoted to the work of the students in the drawing, painting, sculpture, architecture, and theatre classes.

## PUBLICATIONS

Positions on the staffs of the several student publications are open to all students with the requisite training and ability. Selections to the staffs are made after try-outs which are held in the fall of each year. Freshmen are eligible to compete in these tryouts.

### *The Colonial Echo*

*Editor* ..... MARY PHIPPS

*Business Manager* ..... BILL MACE

The Colonial Echo is the student yearbook of the College. It contains a record of all classes and of all activities of the college year. It is published toward the end of the second semester.

### *The Flat Hat*

*Editor* ..... JOYCE REMSBURG

*Business Manager* ..... MONIE PRICE

The Flat Hat, the College newspaper, is published on Tuesday of each week during both semesters.

### *The Royalist*

*Editor* ..... ELISE LEIDHEISER

The Royalist is the student literary magazine.

## COLLEGE HONORARY SOCIETIES

### SCHOLARSHIP

#### *Phi Beta Kappa*

##### *Alpha of Virginia*

Phi Beta Kappa is an honorary scholastic fraternity and was founded at the College of William and Mary, December 5, 1776. It elects to membership senior students of outstanding scholastic attainment and alumni of the College and persons other than graduates who are distinguished in letters, science, education or a learned profession.

### LEADERSHIP

#### *Omicron Delta Kappa*

##### *Eta Circle*

Omicron Delta Kappa is an honorary fraternity for men, installed at William and Mary in 1921. Its members are chosen each year for eminence in college activities. This organization will be inactive for the duration.

#### *Mortarboard*

Mortarboard is a women's honor society whose members are elected in their junior year on the three-fold basis of scholarship, leadership, and service. It endeavors to assist the College each year by fostering scholarship among the students and encouraging a wholesome college atmosphere.

#### *Officers for 1945-1946*

<i>President</i> .....	PAM PAULY
<i>Vice-President</i> .....	JAN FREER
<i>Secretary</i> .....	SUE MCGEACHIN
<i>Treasurer</i> .....	ANNE VINEYARD
<i>Editor</i> .....	JOYCE REMSBURG
<i>Historian</i> .....	JEAN BEAZLEY
<i>Other Members</i> .....	EDIE HARWOOD



## *Aides to the President*

The Aides to the President are a group of men students, usually juniors and seniors, appointed by the President to serve as his personal aides in receiving and entertaining guests of the College. The Aides occupy a position in the academic procession and assist in all public affairs. The following are the Aides for the session 1944-45:

ROBERT HARVEY CHAPPELL, JR.  
THOMAS EDWARD DINGLE  
FRED LEON FRECHETTE, JR.  
AUBREY L. MASON  
THOMAS M. MIKULA  
HUGH MILTON MOORE

RICHARD DALE MYERS  
THOMAS LANIER SMITH  
WILLIAM L. WILLIAMS,  
*Chief Aide*  
WILLIAM AUSTIN WRIGHT

## PROFESSIONAL SOCIETIES

Chi Delta Phi (honorary literary fraternity for women)  
*President* ..... JANET GINSBURG

Eta Sigma Pi (honorary ancient languages fraternity)  
*President* ..... HARRIET PHILLIPS

Kappa Chi Kappa (honorary Girl Scouting fraternity)  
*President* ..... DOROTHY WILLIAMS

Kappa Delta Pi (honorary education fraternity)  
*President* ..... DOROTHY SCARBOROUGH

Kappa Omicron Phi (honorary home economics fraternity)  
*President* ..... ANNE VINEYARD

Lambda Phi Sigma (honorary music fraternity)  
*President* ..... MARION WEBB

Theta Alpha Phi (honorary dramatics fraternity)  
*President* ..... VIRGINIA GRAHAM

H<sub>2</sub>E Club (Physical Education majors)  
*President* ..... PEGGY BURDICK

## INTEREST GROUPS

- Clayton Grimes Biological Club  
*President* ..... AUDREY FORREST
- Inter-Collegiate Debate Council  
*President* ..... VIRGINIA STEPHENS
- Dramatic Club  
*President* ..... ROBERT HAYNE
- French Club  
*President* ..... GLORIA IDEN
- International Relations Club  
*President* ..... VIRGINIA STEPHENS
- Library Science Club  
*President* ..... DOROTHY SCARBOROUGH
- Music Club  
*President* ..... GLORIA McCAWLEY
- Orchesis  
*President* ..... CAROLYN THOMAS
- Scarab Society  
*Senior Board* ..... MARY BAKER
- William and Mary Chorus  
*President* ..... To Be Elected
- Women's Monogram Club  
*President* ..... ANNE VINEYARD
- Spanish Club  
*President* ..... DOROTHY FITZCHARLES
- Psychology Club  
*President* ..... JO-ANNE ARMSTRONG
- Student Affiliates of the American Chemical Society  
*President* ..... DOROTHY HAMMER

## SOCIAL SOCIETIES

### *F. H. C. Society*

The F. H. C. Society, the oldest undergraduate organization in the United States, was founded at the College of William and Mary, November 11, 1750. The society will be inactive for the duration.

### *The German Club*

(Women interested in sponsoring co-ed formal dances)

*President* ..... DONNIE LEPPER

### Y. W. C. A.

*President* ..... PAM PAULY

Every woman at William and Mary who is interested in the aims of the Y. W. C. A. will be given the opportunity to join in September. By her membership in the Y. W. C. A. a student also becomes a member of the World's Student Christian Federation which is composed of representatives from many different countries of the world.

### *Big Sister Plan*

Every year the Y. W. C. A., in cooperation with the Women's Student Government, organizes a group of "Big Sisters" who feel that this endows them with a special kind of friendly ownership and interest in their "Little Sisters" of the freshman class.

It is the special duty of the Big Sister to help her Little Sister become adjusted to college life.

### *Meetings*

Alternate Thursday nights are set for meetings of the Y. W. C. A. Lectures, entertainments, vespers, or discussion groups will be held.

## WAR COUNCIL

The War Council was organized in 1943 by the women students to initiate and coordinate all student war activities on campus.

In September, 1943, the WAM corps (War Activity Members) was sponsored by the War Council. Any coed who volunteers to pledge at least five hours of war work each month may become a member. Ten hours of acceptable war work in one month makes a WAM eligible to wear the WAM Insignia.

War Council Members are elected by popular vote each January on the basis of time and energy spent on war activities.

<i>Chairman</i> .....	HARRIET IRVIN
<i>Publicity Chairman</i> .....	GLO RANKIN
<i>Social Chairman</i> .....	BEV BOSE
<i>Salvage Chairman</i> .....	HELEN BROOKS
<i>Personnel Chairman</i> .....	BARBARA NYCUM
<i>Stamps and Bonds</i> .....	JO-ANNE ARMSTRONG
<i>U. S. O Chairman</i> .....	DONNIE LEPPER
<i>Child Care Agency</i> .....	FRANCES LOESCH
<i>Gardening</i> .....	JEAN MORGAN
<i>Chairman of the Representatives</i> .....	To Be Elected

In addition to these members of the Council, a representative is chosen from each dormitory and sorority house.

## WILLIAM AND MARY RED CROSS UNIT

The College Unit was established in 1943 as a branch of the James City County Chapter, American Red Cross in accordance with the National organization's policy of giving increased responsibility and opportunity to College students to share in Red Cross work.

*Chairman* ..... BETTY MARIE ELLETT  
*Vice-Chairman* ..... FRAN MOORE  
*Treasurer* ..... MARY PHIPPS  
*Secretary* ..... PEGGY POTTER

### *Chairman of:*

Production ..... ALICE PEEBLES  
Camp and Hospital ..... NONNIE FEHSE  
Staff Assistance ..... MARY GRAY  
Motor Corps ..... CAROL TALBOT  
Nurses Aide and Home Nursing ..... PAT MARTIN  
Publicity ..... DOROTHY FERENBAUGH  
Water Safety ..... JOANNE PRINCE

## RELIGIOUS ORGANIZATIONS

### *Student Religious Union*

*President* ..... BOB BRYANT

The Students' Religious Union is a non-denominational organization representing the various religious clubs on the campus.

### DENOMINATIONAL GROUPS

There are religious organizations of several denominations at William and Mary, for the purpose of maintaining religious contacts and affording the student increased social life with the members of his own church.

### *The Canterbury Club*

The Canterbury Club is an organization composed of Episcopal students and their friends at the College of William and Mary.

*President* ..... JOAN SAYERS

### *Westminster Fellowship*

The Westminster Fellowship is an organization of Presbyterian students of the College, which also serves the religious needs of Reformed, Dutch Reformed, Congregational and some Lutheran students.

*President* ..... JEAN GOODWYN

### *Gibbons Club*

The Gibbons Club is an organization of Catholic students of the College.

*President* ..... BRENDA CAHILL

### *Wesley Foundation*

The Wesley Foundation is an organization of students sponsored by the Methodist Church but is open to all those interested.

*President* ..... BOB BRYANT

### *The Balfour Club*

The Balfour Club is an organization of Jewish students of the College.

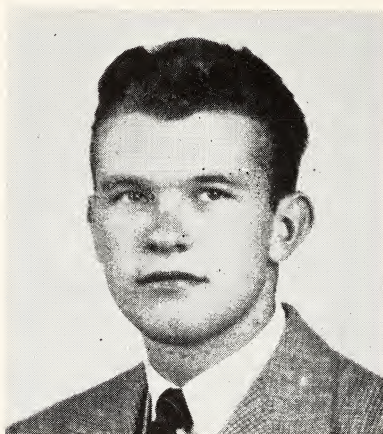
*President* ..... RITA KOPPELMAN

### *Baptist Student Union*

Any student who becomes a member of the Williamsburg Baptist Church, or the College Bible Class, or the Young People's Training Union of the Baptist Church, or of the China Study Club is a member of the Baptist Student Union of the College of William and Mary. There are morning and evening worship services, a Bible class, and a Young People's Training Union each Sunday. The China Study Club has bi-monthly meetings on Thursday evenings. The Baptist Student Union has general meetings several times during the year.

*President* ..... JULIAN ORRELL

# *Student Government*



On behalf of the student body, I would like to extend a cordial welcome to the class of 1949 and to all new students.

For many of you, college will be the last stepping stone before you take your place in society. The next four years will be the important phase of your education. College, besides offering you courses of study, also offers many activities in which you can take part, the most important of which is student government.

Student government is subject to you and not you to it. Take an active interest in it as it is now your responsibility. Some of you entering students will be leaders and some will be followers. Both groups have important responsibilities. The leaders have the responsibility of carrying out the wishes of their followers, to the followers falls the important responsibility of selecting the right type of leaders. Select the candidate which is the best qualified for the office, do not select just a per-



sonality. I urge you to become familiar with the constitution of the student government, pay special attention to the preamble, in it you will find the purposes of your government. Your task is to carry out and further these ideals. Prove to yourself that you are able to accept the responsibility of managing your own affairs. The success of student government rests with you. Remember, you only get as much out of student government as you put into it.

FRITZ H. ZEPHT,  
*President of the Student Body.*

### *Student Government Officers*

#### *Senate:*

*President of the Senior Class* ..... NANCY GRUBE  
*President of the Junior Class* ..... HARVEY CHAPPELL  
*President of the Sophomore Class* ..... BREN MACKEN  
*President of the Men's Honor Council* ..... TOMMIE SMITH  
*Vice-President of the Men's Honor Council* ... GREG MANN  
*President of the W. S. C. G. A.* ..... EDITH HARWOOD  
*Chairman of the Women's Honor Council* ..... JAN FREER  
*Chairman of the Judicial Council* ..... JEAN BEAZLEY  
*President of the Student Body* ..... FRITZ ZEPHT  
*President of the Freshman Class* ..... To Be Elected

#### *Assembly:*

MEN

WOMEN

Seniors:

AL APPELL  
TOM DINGLE  
PETE QUINN

JOYCE REMSBERG  
DOROTHY SCARBOROUGH  
MARY DEVOL

Juniors:

TOM CAMPBELL  
DICK BAKER  
GREG MANN

GINNY TOWNES  
CAROLYN THOMAS  
BONNIE WOLFGAM

Sophomores:

KNOX RAMSEY  
TUT BARTZEN  
BUD JONES

HELEN THOMPSON  
BETSY DEVOL  
JO-ANN PRINCE

Freshmen: (To be elected)

*Speaker of the Assembly*.....FRITZ ZEPHT

# WILLIAM AND MARY STUDENT GOVERNMENT CONSTITUTION

## *Preamble*

We, the students of the College of William and Mary in Virginia, believing that there are common problems that can best be resolved, and common purposes that can be achieved through united effort; and believing that the traditions of student government at William and Mary should be preserved as a sure means of contributing to character and leadership; and desiring to assume responsibility in the management of our affairs, do hereby establish this constitution.

## *Article I—Name*

The name of this association shall be the Student Body of the College of William and Mary in Virginia.

## *Article II—Membership*

The membership of this association shall consist of all regularly enrolled students of the College of William and Mary in Virginia.

## *Article III—Powers*

The powers of the Student Body as herein provided for under this constitution shall extend to all student activities common to both men and women students.

## *Article IV—The President*

There shall be a President of this association, who shall be elected by direct vote of the entire Student Body, and who shall always be a Senior man.

## *Article V—The Assembly*

Section 1: The Assembly shall be composed of thirty-four members, as follows: Three men and three women, elected from each of the four classes, each member of

this association voting for six candidates from his class; and the ten members of the Senate provided for in Article VI.

The President of the Student Body shall be the Speaker of the Assembly.

Section 2. The legislative and the administrative powers of this association shall be vested in the Assembly.

Section 3. The powers and duties of the Assembly shall be such as are provided for in by-laws passed by the Assembly, and approved by the General Cooperative Committee and as constituted in Article VII, Section one, and by the President of the College.

Section 4. The Assembly shall, subject to such limitations as may be otherwise contained in this constitution, determine its own rules of procedure; fix its own time and place for meetings; establish regulations governing all student body elections herein and hereinafter provided for, including the election of its own membership. It shall have also the power to adopt such rules and regulations for the conduct of its own meetings and for the performance of its duties as the Legislative and the Administrative authority for this association as are not otherwise inconsistent with the provisions of this constitution.

#### *Article VI—The Senate*

Section 1. The Senate shall be composed of eleven members as follows: the Presidents of the four classes, the President of the Student Body, the President and the Vice-President of the Men's Honor Council, the President of the Women's Student Cooperative Government Association, the Chairman of the Women's Honor Committee, the Chairman of the Women's Judicial Committee, and the Chairman of the Men's Inter-Dormitory Committee.

Section 2. The Senate shall be a permanent standing committee of the Assembly, to which all by-laws shall be referred, and it shall represent the Assembly on the General Cooperative Committee.

Section 3. The President of the Student Body shall preside over the Senate.

#### *Article VII—The General Cooperative Committee*

Section 1. The General Cooperative Committee shall be composed of twenty-three members as follows: the

President of the College; four administrative Officials; four Faculty members; the Executive Secretary of the Alumni Association; the Senate; the President of the Inter-Fraternity Council, the President of the Pan-Hellenic Council, and the Editor of the *Flat Hat*.

Section 2. The General Cooperative Committee shall meet at least once a month, during the regular college session.

#### *Article VIII—Elections*

Section 1. The Class Officers shall be elected by the direct vote of their respective classes.

Section 2. All members of the Senate with the exception of the officers of the Freshmen Class shall be elected at least two weeks prior to the date set by the Assembly for the election of its new members. No member of the Senate shall be eligible for election to this assembly for the same term.

#### *Article IX—Amendments*

Amendments may be made to this constitution by a two-thirds vote of the total membership of the Assembly after a resolution for amendment has been tabled for one regular meeting.

#### *Article X—Ratification*

This constitution shall go into effect immediately upon its being ratified by a majority of the total of the student body and upon its formal approval by the President of the College.

#### *Article XI—Initial Elections*

The first elections of members to the Senate and Assembly shall be under the supervision of the present student government.

# STUDENT ASSEMBLY BY-LAWS

## *Article I—Organization*

Section 1. A regular meeting of the Student Assembly shall be held the first Tuesday of each month of the academic year.

Section 2. A quorum shall consist of two-thirds of the total membership.

Section 3. Special meetings shall be called by the President upon notification by the Secretary.

## *Article II—Inauguration of Officers*

Section 1. The following pledge shall be taken by members at the first meeting after election: "I do solemnly swear to uphold the Constitution of the Student Body of the College of William and Mary, to discharge faithfully the duties incumbent upon my office."

Section 2. Members of the new Student Assembly shall be installed after their election in the spring before a general meeting of the Student Body called by the President.

## *Article III—Rules of Order*

Section 1. The President of the Senior Class shall be President ex-officio in case of the absence of the President.

Section 2. At the first meeting of the newly elected Assembly, the Secretary shall be elected.

Section 3. The President shall present the order of business:

- (a) The Secretary shall call the roll and read the minutes of the previous meetings.
- (b) The President shall call for committee reports.
- (c) The President shall call for old business.
- (d) The President shall call for new business.
- (e) The President shall ask for voluntary remarks.
- (f) The President shall call for a motion of adjournment.
- (g) Unless otherwise provided for in these by-laws, the power of appointing committees shall rest in the hands of the President of the Assembly.

Section 4. Robert's Rules of Parliamentary Procedure shall be followed, except when in conflict with these By-Laws.

Section 5. Voting shall be by show of hands unless a majority calls for a secret ballot.

Section 6. The meeting shall be open, but it may be closed by an accepted motion.

#### *Article IV*

Section 1. Every officer on leaving his office shall give to his successors all papers, documents, books and money belonging to the society which shall be a part of a permanent record.

Section 2. All records shall be open to the Student Body.

#### *Article V*

The Student Assembly shall have the power to conduct student elections in accordance with the procedure contained in these by-laws:

Section 1. There shall be instituted a Committee on Elections composed of the presidents of the four classes and two members of the Assembly appointed at large by the President. At least two members of the Committee shall be women students. The duties of this Committee shall be the following:

- (a) To call for petitions of nominees for Class and Student Body offices (members of the Assembly, representatives to the Men's Honor Council, Head Cheer Leader).
- (b) To determine the eligibility of nominees according to the qualifications set forth in these by-laws.
- (c) To set a time for holding every regular Class and Student Body election, provided, however, that such elections must be held between the first and last days of April, between the hours of one and six P. M., in places to be specified by the Committee on Conduct of Elections. Elections of Freshmen Class officers and representatives to the Student Assembly shall be held during the first two weeks of November.

- (d) To announce the date of each election at least two weeks before the holding of the election.
- (e) The Chairman of the Elections Committee is to be selected at the first meeting of the Committee.

Section 2. There shall be instituted a Committee for the Conduct of Elections, consisting of the representatives to the Men's Honor Council and of the members of the Honor Committee of the Women Students' Cooperative Government Association. The duties of this Committee shall be to hold elections by secret ballot, in accordance with the provisions set forth in these by-laws. . The Committee shall determine rules and procedure of elections, and shall govern the conduct of elections. The Committee shall count ballots and make known the results of elections. A plurality of votes shall determine election. Talled summaries of the votes cast shall be recorded in the minutes of the Men's and Women's Honor Councils.

Section 3. Students shall make known their candidacy for office by petitioning the Committee on Elections, each petition to bear eleven signatures, including the signature of the nominee. Petitions for class offices shall be signed by members of the class which the candidate seeks to represent. Petitions shall be presented at the office of the Dean of Men within the time determined by the Committee on Elections.

#### Section 4. Qualifications for Office:

##### (a) Freshman Offices:

- (1) A candidate for a Freshman Class or Assembly Office must be a student in his first year at the College of William and Mary, a qualified member of the Freshman Class and must have attended no other college or university previous to his enrollment at William and Mary.

##### (b) All Other Offices:

- (1) A candidate must be a bona fide member of the class which he seeks to represent.
- (2) A candidate for any office other than that of President of the Student Body must have maintained during the semester pre-

ceding the semester in which the election is held a quality point average at least as high as the average for the entire Student Body.

- (c) A candidate for the office of President of the Student Body must have maintained during each of the three semesters preceding the semester in which the election is held a quality point average at least as high as the average for the entire Student Body.

Section 5. Vacancies in Class and Student Body offices shall be filled at special elections held in accordance with the provisions set forth for regular elections in these by-laws, except that the time for a special election may be set at the discretion of the Committee on Elections.

Section 6. Nominations Committee:

- (a) There shall be instituted a Committee on Nominations composed of the senior members of the Student Assembly. The duty of this Committee is to nominate candidates when there are less than three (3) qualified candidates nominated for each office by general petition.
- (b) The President of the Student Body shall preside over the Nominations Committee.

Amendment passed by the Assembly for the duration: Be it resolved that for the duration of the emergency the Men's Honor Council be empowered to appoint men to fill vacancies on the Men's Honor Council and that the Nominating Committee of the Assembly be empowered to fill vacancies in Assembly offices between the fall and spring elections.

### *Article VI*

The Student Assembly shall have the power to make recommendations to the General Cooperative Committee concerning social policies and activities of the Student Body and to ask the Committee or officials to effect such changes as may be deemed reasonable and necessary. The secretary shall submit formal notification of such recommendation to the proper authority.



## Article VII

Section 1. The Student Assembly shall have the power to recognize the formation of new clubs and organizations on campus.

- A. New organizations must petition the Student Assembly for recognition.
- B. Organizations which have not obtained recognition from the Student Assembly will not be allowed a place on the Social Calendar or representation in the College year book.

Section 2. The Student Assembly shall have the power to supervise all clubs and organizations on the campus.

- A. There shall be an Interclub Council consisting of the following persons:
  1. Presidents of all clubs and organizations.
  2. The vice-president of the W.S.C.G.A.
  3. A chairman elected by the Assembly from the junior or senior membership of the Assembly.
  4. A secretary to be elected by and from the council and whose duties shall be to keep minutes of all council meetings and a record of the clubs and organizations in it.
  5. The President of the Accounting Club shall act as comptroller of finances, keep a record of financial statements, and with the aid of the Accounting Club help other organizations to set up books and audit them.
- B. The duties and powers of the Interclub Council shall be the following:
  1. To hold three regular meetings a semester, the Chairman having the power to call any additional meetings that are necessary.
  2. To organize the club calendar.
  3. To enforce the club standards.
  4. To submit a semester report to the Student Assembly.

### Section 3. Club standards.

- A. Standards for clubs and organizations shall be the following:
  1. Membership. Persons may not become members of a special interest club whose average in the field of interest is below a C. Membership will be withdrawn from the member who fails to attend two consecutive meetings or three meetings throughout the year without legitimate excuse.
  2. The clubs and organizations are required to meet for at least 75 percent of the stated meetings. A quorum of two thirds of the club membership is required at every regular meeting.
  3. A faculty advisor is required of every club.
  4. Other qualifications of standards as the Interclub Council or Assembly deems advisable.
- B. Failure of any club or organization to comply with these regulations shall constitute grounds for withdrawal of recognition by the Assembly on recommendation of the Interclub Council.

### *Article VIII*

The Student Assembly shall have the authority to enforce the following "duc" rules by means of a Freshman tribunal:

- (a) The Freshman Tribunal is to be composed of the six sophomore members of the Student Assembly, the President of the Sophomore Class, who shall be the Chairman, the President of the Interfraternity Association, and the President of the Pan-Hellenic Council.
- (b) The "Duc" Rules:
  - (1) Duc Caps
    - a. All freshmen must wear duc caps when on campus or in Williamsburg and vicinity.

- (a) From 7 a. m. to 10 p. m. on week days.
- (b) From 7 a. m. to 6 p. m. on Saturdays.
- (c) No caps worn on Sundays.
- (d) Freshmen men are required to wear black bow ties on Saturday nights and Sundays, and freshmen women are required to wear ribbons on Saturday nights and Sundays.

(2) Campus Walks

- a. Freshmen will use only the middle campus walk when going to and from town.
- b. When passing Lord Botetourt, Freshmen men are required to tip their hats, the women to curtsy.

(3) Attendance at College Functions

- a. Freshmen are expected to attend all convocations, Student Body meetings, Tribunal meetings, Freshman Class meetings, and pep rallies.
  - (a) In cases of necessity, permission to be absent from any of the above meetings may be obtained from any member of the Tribunal.
- b. Freshmen are expected to attend all major home athletic contests and will:
  - (a) Occupy a cheering section designated for them.
  - (b) Use their megaphones at all games.
  - (c) Learn all college cheers and songs before the first home football game.

(4) Courtesy and General Conduct.

- a. In accordance with William and Mary's long record of friendliness, it is expected that Freshmen will show due respect and courtesy to their classmates, to other students, to the faculty, and to visitors to the College.

(5) All Freshmen rules will continue until Christmas vacation; but, if William and

Mary beats Richmond in football, the rules will be suspended at once. Any violation of the above rules is subject to the action of the Tribunal.

#### Article IX

The Student Assembly shall have the authority to discuss and act upon all petitions presented to the Assembly by the Student Body.

#### Article X

The Student Assembly shall have the right to discuss anything related to the general welfare of the College and to make recommendations thereon to the General Cooperative Committee.

#### Article XI

Section 1. There shall be a Publications Committee consisting of the following persons:

- (1) A Chairman, elected by the Assembly from among the junior and senior membership of the Assembly.
- (2) The Editor of the *Flat Hat*.
- (3) The Editor of the *Colonial Echo*.
- (4) The Editor of the *Royalist*.
- (5) A member of the Faculty elected by the Assembly.
- (6) A member of the Faculty elected by the Student Activities Committee.
- (7) The President of the Student Body.

Section 2. The duties and powers of the Publications Committee shall be the following:

- (1) To elect the Editor of the *Flat Hat*, the Editor of the *Colonial Echo*, the Editor of the *Royalist*, the Business Manager of the *Flat Hat*, the Business Manager of the *Colonial Echo*, and the Circulation Manager of the *Flat Hat*.
- (2) To review elections and appointments of other members of the various staffs.
- (3) To serve as board for hearing and acting on complaints concerning staff organization or staff administration.

- (4) To hold regular meetings, at intervals of not more than four weeks, for the purpose of scrutinizing staff organizations, of assuring itself that the provisions of these By-Laws are observed, and of discussing the general conduct of the publications.
- \* (5) To establish rules and regulations governing the organization and operation of the several publications, and to provide and enforce penalties for the failure to comply with such rules and regulations.

Section 3. The Publications Committee shall have no voice in the editorial policy of any publication.

Section 4. The members of the Publications Committee shall be elected during the first week of May. The term of their membership shall begin on the first of June and shall last for one year.

Section 5.

- (1) The Editor of the *Flat Hat*, the Editor of the *Colonial Echo*, the Editor of the *Royalist*, the Business Manager of the *Flat Hat*, the Business Manager of the *Colonial Echo*, and the Circulation Manager of the *Flat Hat* shall receive salaries to be fixed by the Student Activities Committee.
- (2) In order to be eligible for election to one of the salaried offices listed in the preceding subsection, a candidate must have maintained during the semester preceding the semester in which the election is held a quality point average at least as high as the average for the entire student body.

Section 6. The editorial staff of the *Flat Hat* shall consist of the following persons:

- (1) An Editor elected from among the Junior Editors. The Editor shall be a bona fide member of the Senior Class.
- (2) A Managing Editor elected from among the Junior Editors, or he may be an underclassman if so desired.

---

\*Amended during the 1943-44 session.

- (3) A Sports Editor, a Make-Up Editor, a News Editor, and a Feature Editor. There shall be no more than six nor less than four junior editors selected by the Editor and approved by the Publications Committee. These junior editors shall have had at least one year's previous experience and preferably shall be members of the Junior Class.
- (4) Editorial assistants to be appointed by the Editor, Managing Editor and Junior Editors. These shall be bona fide members of the Sophomore, Junior, and Senior Classes. There shall be no more than six Editorial Assistants.
- (5) The duties and functions of staff members shall be reported for approval of the Publications Committee by the Editor of the *Flat Hat* at the regular meetings of the Publications Committee. These duties and functions relate to staff organization only and in no way refer to the editorial policy of the *Flat Hat*.
- (6) Not fewer than fifteen nor more than twenty Freshmen, and not fewer than eight, nor more than ten Sophomores, who shall be elected to the staff by the Editor and the three Junior Editors. Should the number of members in either the Freshman staff or the Sophomore staff fall below the proposed minimum, the Editor shall call for candidates and shall hold tryouts for the purpose of filling vacancies.
- (7) Feature writers and specialty writers of whatever class rank, to be appointed by the Editor and Junior Editors.

Section 7. The editorial staff of the *Colonial Echo* shall consist of the following persons:

- (1) An Editor elected from among the Junior Editors. The editor shall be a bona fide member of the Senior Class.
- (2) An Associate Editor appointed by the Editor, with the specific approval of the Publications Committee, from among the Junior Editors.
- (3) Class Editor, an Athletic Editor, a Fraternities and Organizations Editor, and a Photography Editor. There shall be no more than six nor

less than four junior editors selected by the Editor and approved by the Publications Committee. These junior editors shall have had at least one year's previous experience and preferably shall be members of the Junior Class.

- (4) Not fewer than twelve nor more than eighteen Freshmen, and not fewer than eight nor more than twelve Sophomores, who shall be elected by the Editor, the Associate Editor, and the four Junior Editors. Should the number of Freshmen or Sophomore staff members fall below the proposed minimum, the Editor shall call for candidates and shall hold tryouts for the purpose of filling vacancies.

Section 8. The staff of the *Royalist* shall consist of the following persons:

- (1) An Editor elected from among the Junior Editors. The Editor shall be a bona fide member of the Senior Class.
- (2) Associate Editors appointed by the Editor from among the Junior Editors.
- (3) A Fiction Editor, a Poetry Editor, an Articles Editor, an Art Editor, and an Exchange Editor. There shall be no more than six nor less than four junior editors selected by the Editor and approved by the Publications Committee. These junior editors shall have had at least one year's previous experience and preferably shall be members of the Junior Class.
- (4) Ten Staff Assistants who are bona fide members of the Sophomore Class and five Staff Assistants who are bona fide members of the Freshman Class, to be chosen by the Editor and Junior Editors on the basis of applications and tryouts. Each Staff Assistant shall be assigned particular routine tasks under the supervision of the Editor and Junior Editors, in order that he may have practice in collecting material, editing it, and reading proof.
- (5) An adequate number of typists appointed (regardless of class rank) by the Editor and Junior Editors.

- (6) A Circulation Manager appointed by the Editor and Junior Editors from the members of the Sophomore, Junior and Senior Classes.
- (7) A staff of photographers appointed (regardless of class rank) by the Editor and Junior Editors.

Section 9. The duties of the Editors of the three publications shall be to supervise and to administer staff organization. Each Editor shall accept final responsibility for the quality and the form of materials in his publication.

Section 10.

- (1) The business staff of the *Flat Hat*, shall consist of not fewer than fifteen and not more than twenty members, to be appointed by the Business Manager.
- (2) The business staff of the *Colonial Echo* shall consist of not fewer than fifteen and not more than thirty members to be appointed by the Business Manager.
- (3) The circulation staff of the *Flat Hat* shall consist of not fewer than four and not more than eight members, to be appointed by the Circulation Manager.
- (4) Not fewer than twenty per cent and not more than forty per cent of the members of any business or circulation staff shall be from a single College Class.

Section 11. Every Editor, every Business Manager, and the Circulation Manager of the *Flat Hat* shall be required to file a report with the Publications Committee not later than the twentieth of April, giving tangible evidence as to the amount and quality of work work done by each member of his staff.

The following resolution was passed: "Be it resolved that the Publications Committee be granted the right to depart from the strict provisions of subsection 1 of sections 6, 7, and 8 of Article XI of the By-Laws during the period of the emergency."

For the duration of the war the President of the Student Body of the College of William and Mary in Virginia must be either a senior man or senior woman.\*

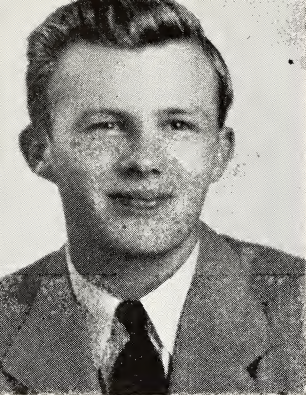
\*Adopted May 13, 1943.



Amendment passed for the duration: that the Publications Committee be granted the right to depart from the strict provisions of sub-sections 3 and 6 of section 6, sub-sections 3 and 4 of section 7, and sub-sections 3 and 4, of section 8 of Article XI of the By-Laws.

#### *Article XII*

Every proposed alteration, amendment, or addition to these by-laws and rules of order hereunto annexed, must be handed to the President in writing, who shall publish the same to the Assembly, and at the next regular meeting, it may be adopted by a two-thirds vote of the entire membership, and thereupon referred to the General Cooperative Committee for approval.



**TOMMY SMITH**  
*Chairman, Men's  
Honor Council*

## **TO THE CLASS OF 1949 FROM THE JOINT HONOR COUNCILS:**

We should like to introduce to you, as new students on the campus of William and Mary this fall, one of our most cherished traditions—the Honor System.

The Honor System of the College of William and Mary is the oldest in existence in American Universities. Inaugurated in 1779, this system has been proudly upheld by the students for 166 years.

Based wholly on the honor of each individual student, infractions of this code are enforced by the students through the Men's and Women's Councils elected from and by the student body.

Since the Honor System is such a vital and integral part of the College of William and Mary, each entering student is automatically responsible to himself and to his fellow students to uphold the System. It is not optional. You will be thoroughly instructed in the principles of the Code, so that you may not violate it through ignorance, for violation causes injury to the character, the reputation, and the future of the student. It also causes an equally grave lowering of the morale of the Student Body, which must always suffer by the disgrace of any of its members.

Breaches of the Honor Code are stealing, cheating, lying, and failure to report an of-

**JAN FREER**  
*Chairman, Women's  
Honor Council*



fense, and as such they are punishable by dismissal from College.

Clear-cut advantages are to be gained from the Honor System. It assumes that every student, upon entering College, has reached that stage of maturity where strict supervision is no longer necessary. During examinations you will find no proctors and furthermore, you will be free to leave and return to the examination room at any time.

The success of the Honor System depends upon the support of each student. We feel confident that you will share our great respect for this System, and can be entrusted to continue the maintenance of its high ideals.

Sincerely yours,

JAN FREER, *Chairman*,  
Women's Honor Council.

TOMMY SMITH, *Chairman*,  
Men's Honor Council.

### *Men's Honor Council*

*Senior Members*:..... } FRED FRECHETTE  
  } JULIAN ORRELL  
  } TOMMY SMITH, *President*

*Junior Members*..... } TOM CAMPBELL  
  } CREGG MANN, *Vice-Pres.*  
  } HARRY STINSON

*Sophomore Member*..... CLAIRBORNE ANDREWS, *Secretary*

### *Women's Honor Council*

*Senior Members*..... } JAN FREER, *Chairman*  
  } ANNE VINEYARD  
  } BARBARA NYCUM

*Junior Members*..... } NANCY EASLEY, *Secretary*  
  } BETTY BORENSTEIN  
  } FRAN MOORE

*Sophomore Member*..... JOAN PRINCE



EDITH HARWOOD,  
*President, Women's  
Student Government*

## A WELCOME TO THE NEW STUDENTS FROM THE EXECUTIVE COUNCIL

The Women Students' Co-operative Government Association wishes to extend a very happy welcome to the class of 1949 and all new students.

All of you girls will automatically become members of this organization when you enter the College of William and Mary.

The women students are proud of our self governing organization and we hope you will share with us our feeling of pride and respect.

The association was organized because the women students, believing in self government, wanted a greater voice and responsibility in the conduct of their affairs.

Our aim is to represent and further the best interests of the women students.

The work of the organization is carried on by three councils and with the aid and advice of the Faculty and Administration.

We can only accomplish our aim with the help and cooperation of each individual member. That means that each member must assume a definite responsibility.

We hope that each of you will realize the important role you have to play in Student Government, and that you will have a real interest in the work of the Association. The greatest asset this organization can have is a student body with an appreciation of the ideals and principles of student government, with a genuine belief in its value; a student body with a sense of individual and group responsibility, and of personal dignity and integrity.

We hope to find these qualities in you, who are now members and prospective leaders of the Women Students' Co-operative Government Association.

EDITH HARWOOD,  
*President, Executive Council.*

Women Students' Cooperative Government  
Association Officers for 1945-1946

*Executive Council*

President.....	EDITH HARWOOD
Vice-President.....	PAT JONES
Secretary.....	NONNIE FEHSE
Treasurer.....	SHIRLEY SPRAGUE
Representative-at-large.....	GUNESH GURAN

*Honor Committee*

Chairman.....	JAN FREER
Secretary.....	NANCY EASLEY
Senior Members.....	{ BETTY MARIE ELLETT ANNE VINEYARD
Junior Members.....	{ BETTY BORENSTEIN NANCY EASLEY FRAN MOORE
Sophomore Member.....	JO-ANN PRINCE

*Judicial Committee*

Chairman.....	JEAN BEAZLEY
Secretary.....	SUSIE SEAY
Junior Member.....	BONNIE WOLFGAM
Sophomore Member.....	BARBARA DAVIS
Representatives at large.....	{ JERRY HEALEY DOROTHY SCARBOROUGH

*House Presidents*

Chandler.....	SHIRLEY PARISH
Barrett.....	JANET GINSBURG
Brown.....	SHIRLEY DAVIS
Monroe.....	JEAN PETERS
Jefferson.....	MARY STUART MASON



JEAN BEAZLEY  
*Chairman of the  
Judicial Committee*

## A MESSAGE TO THE CLASS OF 1949 FROM THE JUDICIAL COMMITTEE

On behalf of the Judicial Committee I should like to extend a welcome to you who are now new students at the College of William and Mary. In order for Student Government to function efficiently, it is essential that you, its members, understand and abide by its regulations.

A part of your orientation program will include getting acquainted with these rules and understanding them thoroughly. After an upper-classman sponsor has explained the social, house, and park regulations to you, you will be given an examination. Upon passing it you will be expected to conform not only to the letter but to the spirit of these rules.

Perhaps you are wondering what the functions of the Judicial Committee are and just how these rules are made. We of the Judicial Committee have as our function the interpretation of these rules and the responsibility of dealing with any violations of them. In addition to this function, the Committee each year makes a thorough investigation of existing rules in order to clarify them, to revise them if necessary, and thus eliminate any undue restraint. If the revisions are approved by the administration, they are presented to the students who vote on them. If the revisions are accepted, they are then embodied in the rule book for the next year. In this way the Judicial Committee attempts to see that each rule has a reason for its existence and that the regulations are as clear and fair as possible.

We hope that you will make conforming to these rules an integral part of your College life. Student Government can be successful only so far as each one of you feels a responsibility towards upholding its principles and the high standards of the College at all times.

JEAN BEAZLEY,  
*Chairman of the Judicial Committee.*

# *Fraternities and Sororities*

## A WORD ABOUT GREEK LETTERS

Until May, 1943, there were eleven fraternities and nine sororities on the campus. At that time it was unanimously decided by the Fraternity Association, composed of all men's fraternities, to suspend all activities for the duration.

During the college year 1943-44, local social clubs were organized to provide social life and promote fellowship among men. These social clubs will operate only for the duration of the War and will voluntarily revoke their charters as soon as the Inter-Fraternity Council re-organizes and fraternities operate again on the campus of William and Mary.

## MEN'S SOCIAL CLUBS

*The Inter-Social Club Council of  
The College of William and Mary*

### CONSTITUTION

#### *Article I — Name*

The name of this organization shall be:

The Inter-Social Club Council of the College of William and Mary.

#### *Article II — Objects*

The objects of this Council shall be:

1. To promote cordial relationships among the men's social clubs of this College by providing a common medium through which to act in furthering the common aims of the organizations.
2. To establish rules governing matters of general Inter-Social Club activity.

#### *Article III — Membership*

1. The Inter-Social Club Council of the College

shall include all men's social clubs at present established in this college, and such other that may be established in the future by the joint authority of the Dean of Men, Student Assembly, and General Cooperative Committee.

2. The membership of this Council shall consist of the presidents of each member of the Council and one representative at large from each member.

#### *Article IV — Meetings*

1. There shall be at least one meeting during the months of September, October, November, December, February, March, April and May.
2. Additional meetings may be called at the initiative of the President or at the request of any member.

#### *Article V — Officers*

1. The officers shall be a President, Vice President, and Secretary.
2. The President, Vice President, and Secretary shall be elected semi-annually from among the membership of the Council.
3. The duties of these officers shall be those usually performed thereby.

#### *Article VI — Voting*

1. An unanimous vote of the entire Council shall be necessary in order to:
  - A. Amend the Constitution.
  - B. Modify rules and regulations governing rushing and pledging; rules and regulations attached hereto are made a part of this Constitution.
2. Each member of this Council shall be entitled to one vote and all business shall be transacted by an unanimous vote less one vote, except as herein provided.

### APPENDIX — RULES AND REGULATIONS RUSHING RULES

1. Time and limits:
  - a. Formal rushing shall begin on the fourth Monday of October continuing through to the



evening of the following Wednesday. This rushing shall take place between the hours of 8:00 A.M. and 12:00 P.M. of each day included above.

- b. The following Thursday is here designated as "Silence Day."
- c. The following Friday invitations to join clubs shall be issued.
- d. Bids shall be returned by 2:00 P.M. the following Sunday to the Inter-Social Club Council box.

2. Pre-rushing Regulations:

- a. Club members shall be on their honor not to "dirty rush" prospective candidates for membership.
- b. Prior to the formal rushing period, there shall be no rushing of prospective candidates for membership in any manner whatsoever, provided, however, that normal or customary friendly associations may be obtained.

3. Formal Rushing Regulations:

- a. Total rushing expenses shall not exceed \$25 per club.
- b. See appendix — rules and regulations number one.
- c. No intoxicants shall be served during formal rushing period.

4. Action in Event of Violations of Regulations:

For a violation of rules stated herein, this Council shall have the power of proper, corrective, disciplinary action subject to the approval of the Dean of Men.

Members under disciplinary consideration shall have all rights granted herein except that of the right to vote until immediately after such a time as final action shall have been taken.

## REGULATIONS GOVERNING SOCIAL AFFAIRS IN THE MEN'S FRATERNITY HOUSES

1. A proposed calendar of social events planned by a fraternity during each semester must be pre-

sented to the Schedule Committee at the beginning of each semester. An approved schedule will be returned to each fraternity by the Schedule Committee. No dance or party may be scheduled unless a request is made at least three days prior to the day of the party.

2. No more than three dances or parties can be held by a fraternity during the session. No more than two such parties can be held during any semester. Parties or dances are not permitted to be held off campus.
3. Before a dance or party is held, a complete list of chaperons and guests must be submitted to the office of the Assistant Dean of Women before noon on the day of the party. Names may not be added after this hour. Chaperons must be persons associated with the College.
4. Parties may be held on Friday or Saturday nights only, except on special occasions specifically approved (see Number 9). No parties will be allowed on Saturday nights when College dances are scheduled.
5. Parties held on Friday and Saturday nights must be brought to a close in time for the women to be in their respective houses by 12 o'clock midnight. Picnics and such other affairs must be brought to a close in time for the women to return to the campus by 8 P.M. Parties held on special occasions must be brought to a close in time for the women to be in their respective houses by 11 p. m.
6. Any fraternity against which financial complaints have been filed may be denied permission to have parties.
7. Each fraternity is held responsible for the conduct of its members in conforming with these regulations.
8. The privilege of holding parties on special occasions, subject to such rules as may appear desirable in each case, is subject to the discretion of the Schedule Committee.



Club pins with "plege pins" above, left to right: Phi Delta Pi, Sovereigns, Kappa Tau. Not shown: Zeta Zeta Zeta.

## *Phi Delta Pi*

Established October 3, 1943

Monthly Dues: \$1.00

Gene Albertson, Al Appell, Dick Baker, Gene Butler,

Leroy Canoles, Harvey Chappell, Frank Davis, George Davis, Ed Dunbar, Arthur Fousekis, Bill Greer, Jack Hoey, Bill Hornsby, Bud Jones, Al Long, Chet Mackiewicz, Stan Magdzaik, Bob Marim, Billy May, Dencer Mills, John Pel- lar, Carl Pirble, Harvey Pope, Dick Quynn, Pete Quynn, Joe Rego, Chuck Riley, Bob Rodney, Bob Sherry, \*Harry Stinson, Bubby Vaughn, Red Wood, Fritz Zepht.

## *Kappa Tau*

Established October 31, 1943

Pledge Fee: None.

Pledge Dues: 40c a Month.

Initiation Fee: \$5.00.

Active Dues: 50c a Month.

Description of badge: Gold Shield and Torch, jewelled.

### MEMBERS:

Robert Ascherl, Charles Hyle, Thomas Bartron, Perry Foster, Joseph Baler, Daniel Putnam, Hooker Harbour, Gregory Mann, Claiborne Andrews, William White, George Sullivan, James Dowd, James Weddle, \*Robert Jacobs, Robert Piland, Garland Drake, Louis Moncure, Robert Hewitt, Will B. Wright, Julian Orrell, Lyle Thornhill, Eric Brown, Gene Purdum, Buddy Lachy, Edward Hudgins, Robert Anderson, George Reese, Eugene Lench, Louis Creekmur, Knox Ramsey, Paul Reynolds, Stanley Vautram, Robert Dent, Albert Clark.

### *Pledges:*

Cecil Tinder.

---

Asterisk (\*) indicates president.

## *The Sovereign Club*

Established October 3, 1944

Initiation Fee: \$1.00.

Monthly Dues: 75c.

### MEMBERS:

Gus Andrade, "Tut" Bartzen, Ben Bray, Jim Bray, Tom Campbell, Gary Clark, John Daley, Clay Dance, Bob De Forest, Tom Dingle, Bob Doll, Fred Frechette, Bill Guidice, Pat Indence, Lee Lively, Bill Mace, Bren Macken, Bill Murphy, Bob Orebaugh, Bert Parr, Bill Pegram, Bob Piefke, Bert Rance, Charles Richardson, Jim Sawyer, Frank Scott, Tom Smith, Dave Struminger, Bernard Swan, John Trempus.

\*President to be elected.

## *Zeta Zeta Zeta*

Established April 16, 1945

Initiation Fee: \$7.50.

Monthly Dues: \$1.00.

### MEMBERS:

\*Dale Parker, Mike Hopkins, Bill Norgren, Jon Kirtz, Herbert Tucker, Don Anderson, Clinton Atkinson, Wally Bolding, Pat Ellison, Billy Hux, Trueman Jones, Floyd Joyner, Jack London, John Scott, Osburn Wynkoop.

## **PAN-HELLENIC COUNCIL MESSAGE**

The purpose of the Pan-Hellenic Council is to draw up the rushing rules, sponsor a faculty reception and sponsor discussion groups and mass meetings for freshmen, transfers and sorority women.

I know it is confusing for freshmen women to be suddenly thrust into a whirl of Greek letters, rushing rules and sorority phrases, so I should like to present a few facts about sororities and rushing.

Asterisk (\*) indicates president.

Sororities are groups of girls organized for the purpose of furthering interest in activities, encouraging high scholarship and fostering definite and lasting friendships and mutual service among their members. There are nine national sororities on this campus, that is, sororities with chapters at other colleges.

Including their pledges, the membership of these sororities range from about 20 to 60 girls. New girls are chosen mainly from among the newly enrolled women after a period of about ten days of formal rushing—a system by which both sorority girls and freshmen get a chance to know and judge each other. An invitation to a sorority comes unsought and is not applied for.

This year, we are incorporating a new system of rushing and one which has not been used on this campus for the past five years. There will be no association between sorority and freshmen women during the period before formal rushing. Rushing will begin Thursday, September 27, at which time the sorority girls will visit the freshmen at their rooms in the dorm. Following this, there will be a period of rushing in the sorority houses. We feel that this system will be easier for both the freshmen and the sorority girls since it will take place before exams and during a period when there will be a minimum of outside studying.

There are several terms which you ought to know:

**ACTIVE**—A fraternity girl who has been regularly initiated.

**CHAPTER**—Greek letter names given to the individual groups of the national fraternity organization.

**PLEDGE**—Newly elected member of a fraternity who has not yet been initiated.

**RUSHING**—The system by which the fraternities select and pledge new members.

**SILENCE DAY**—The day between preferentials and acceptance day when there is to be no correspondence, spoken or otherwise, between freshmen or transfers and sorority women. This day is to give you a chance to do some hard thinking and to make up your mind as to what you want to do.

Rushing during the week is informal and it is not necessary to change from your classroom clothes. It is customary to wear a hat and carry gloves at the Sunday and Monday parties. Always remember that it is *very* important to be neat in appearance and natural in your conduct. Be yourself. You are choosing, and the sororities are choosing groups who are congenial and sorority women realize that unless your likes and general personality fit in with theirs, neither you nor they will be happy in the group. If you disguise your personality before you join an organization, circumstances may prove unhappy.

If you cannot accept an invitation to one of the houses, do not fail to decline by phone or by a note put in the boxes in the lobby of Barrett Hall. Do *not*, by any means, cut any classes to attend a party.

Sorority life is like family life. Everyone must pull together toward a common purpose. Your actions reflect on the rest of your group and it is a method of give and take.

I suggest that you read and learn the rushing rules printed in the Indian Handbook. Every sorority girl is required to learn them and it is an excellent idea for the freshmen to know them too, because the responsibility for adherence to them is shared by both the sorority women and the freshmen and transfers.

"Rushing" gives you a good opportunity to meet both upperclassmen and other freshmen. On your visits to the various sorority houses, you may find one that you feel suits your type of personality. On the other hand, you may not. Remember, it is not vital to your college career to join a sorority. You can have an extremely happy and successful college life without joining a sorority.

Be careful in choosing. Think over your choice and make a special effort to know all the girls before you pledge. Remember that when you hand in your choice at 7 o'clock on Silence Day, it is final and cannot be changed. So choose wisely, for your decision may affect the four best years of your life.

DONNIE LEPPER,  
*President, Pan-Hellenic Council*

*Pan-Hellenic Council for 1945-1946*

*President*

DONNIE LEPPER ..... Pi Beta Phi

*Secretary*

GUNESH GURAN ..... Phi Mu

*Treasurer*

MARY BROOKS HARPER ..... Alpha Chi Omega

*Social Chairman*

DOROTHY HOPE ..... Kappa Delta

*Faculty Advisor*

MISS MARION REEDER

*Sorority Officer*

MISS MARGUERITE WYNNE-ROBERTS

*Members:*

MARGARET KNOWLTON, Chi Omega

TRINKA ROBINSON, Chi Omega

PATTY WHITCOMB, Kappa Alpha Theta

BOBBIE STEELY, Kappa Alpha Theta

HELEN JORDAN, Kappa Kappa Gamma

BETTY JANE TAYLOR, Kappa Kappa Gamma

JEANNE LAMB, Pi Beta Phi

ELIEN DIGGS, Phi Mu

JOY WRIGLEY, Alpha Chi Omega

VIRGINIA RASSINIER, Kappa Delta

POLLY KROTTS, Delta Delta Delta

ELIZABETH PARHAM, Delta Delta Delta

PEGGY WALKER, Gamma Phi Beta

MARTHA LAMBORN, Gamma Phi Beta



# PAN-HELLENIC RUSH RULES

## 1945-46

### A. Association

1. There shall be no association of Freshmen and Transfers with sorority women until closed rushing begins including orientation week. The following restrictions must be observed on or off campus:

- a. There is to be no sorority talk by any sorority woman. Information about each sorority will be found in the Indian Handbook, and in the short histories of each sorority which will be available at the respective houses when formal rushing begins. Literature, publications, and periodicals of the sororities will also be available at all times at the college library.
- b. Absolutely no money shall be spent on freshmen or transfers or gifts sent to them by sorority women; nor shall freshmen or transfers spend money on sorority women or send them gifts.
- c. No dates shall be arranged by sorority women for freshmen and transfers or by freshmen and transfers for sorority women.
- d. There shall be no overnight visiting between freshmen or transfers and sorority women at any time.
- e. New women are not allowed in sorority houses until formal rushing begins, with the exception of Sunday, September 23, Open House.

2. Town women will be under the same rules as all other freshmen, transfers and sorority women.

3. Y.W.C.A. "big sisters" who are sorority women with the exception of Saturday afternoon, September 22, will be under the same restrictions as all other sorority women with the exception of Saturday afternoon, September 22, and Sunday morning, September 23.

4. There can be free association only at scheduled club meetings and church gatherings.

5. Alumnae will be under the same restrictions as undergraduate sorority women at all times.

6. Sorority women may wear their pins at all times.

7. The Pan-Hellenic Council will hold mass meetings for freshmen and transfers on Thursday, September 20, at 4:00 and on Wednesday, September 26, at which problems concerning rushing will be freely discussed and explained.

B. *Pledging and Repledging:*

1. There shall be no pledging or bidding of any student, freshman, transfer, or old student during the period beginning with the last day of class of winter school session until the Pan-Hellenic pledge day terminating formal rushing in October.

2. Repledging and initiation of a woman may take place at any time according to the discretion of the individual sorority.

C. *Open House:*

1. In conjunction with the freshman orientation program, each sorority house shall be open for freshmen on Sunday, September 23. The purpose of this invitation is to create a better feeling of understanding and democracy. No entertainment or refreshments may be provided.

D. *Formal Rushing:*

1. There shall be no association of freshmen and transfers with sorority women during the period termed "closed rushing" outside set rushing hours.

2. There shall be no sorority talk during the period by any sorority woman, patroness, or alumna. "Sewing up" at any time before the end of rushing is sorority talk. Scrapbooks and publications may be used without comment from members in the sorority houses. Songs may be sung.

3. Rushing shall be confined to the William and Mary campus. There shall be no driving of rushees in cars except of rushees not living in dormitories. These girls may be brought to and from dates at the sorority houses.

4. There shall be no outside entertainment at either of the rushing parties or at the open house, and no men may attend either party of the open house, or be in evidence during any time when rushing is going on in the houses. No sorority may request men to rush for them.

5. There shall be no telephone messages or conversations of freshmen or transfers with sorority women dur-

ing the period of closed rushing except concerning an invitation from a sorority.

6. The following program of rushing has been adopted by the Council for 1945-1946:

a. Dormitory rushing will begin on Thursday, September 27 and Friday, September 28, when sorority women may visit freshmen and transfers in the rooms of the freshmen or transfers, from 4-6 and 7-9.

1. The visiting group of any one sorority shall consist of not more than four or less than two women.

2. No sorority women may visit a rushee for more than twenty minutes. This means two groups of the same sorority must not follow each other unless the twenty minute period has *not* elapsed.

b. There shall be no rushing on Saturday, September 29, or Sunday, September 30.

c. Rushing in the houses will begin on Monday, October 1, and is by invitation only. Dates for all girls shall be arranged by the Council.

(1) Monday, October 1, 4-6 P. M.—Invitations will be issued to those girls whose initials are A-M.

(2) Tuesday, October 2, 4-6 P. M.—Invitations will be issued to those girls whose initials are I-P.

From 7-9. P. M.—Invitations will be issued to those girls whose last initials are O-Z.

(3) Wednesday, October 3, through Friday, October 5, 4-6 P. M. and 7-9 P. M.—Visiting by invitation.

(4) Saturday, October 6—No rushing and no association.

(5) Sunday, October 7—Reception from 3-6 P. M.

(6) Monday, October 8—Preferential parties 7-10 P. M.

(7) Tuesday, October 9—Silence day. Bids must be returned to Phi Beta Kappa Hall by 7 P. M. These bids are *final* and will not be changed after 7 P. M.

- (8) Wednesday, October 10—Acceptance. Sororities will issue invitations in the morning. New pledges are not to associate with sorority women until they go to their respective houses at 1 P. M.

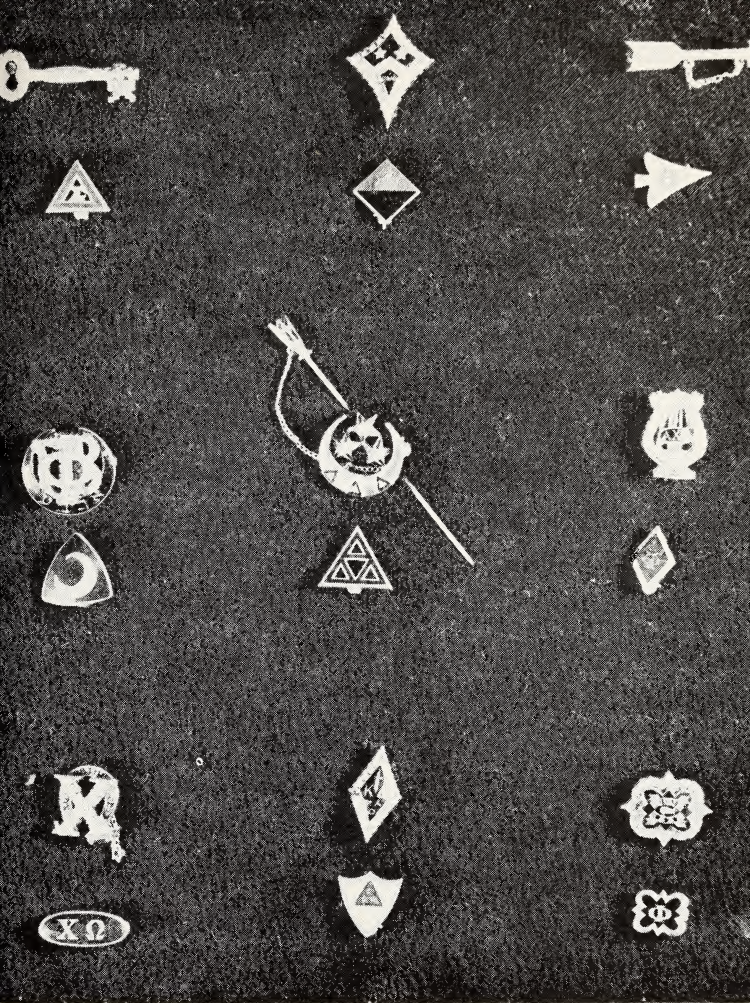
E. *Expenditures:*

1. The Council has fixed 50 dollars as the maximum sum to be spent on rushing. This includes all foods, favors, invitations, and any other expenses incurred from the entertainment. There shall be no contributions of any sort by sorority women, their parents, friends, alumnae, or patronesses.

2. The amount in excess of ten dollars in payment for the histories must be deducted from the 50 dollars maximum.

3. Note paper and cigarettes will not be deducted from the 50 dollars.

4. If a freshman or transfer cannot accept an invitation, she must notify the sorority inviting her on receipt of the invitation. If she does not decline the invitation, and does not go to the house, she will probably be dropped by that sorority. Decline by telephone or by note in the sorority box in Barrett Hall.



“Active” pins are pictured directly above “pledge” pins. Reading, top row, left to right: Kappa Kappa Gamma, Kappa Alpha Theta, Pi Beta Phi. Middle row, left to right: Gamma Phi Beta, Delta Delta Delta, Alpha Chi Omega. Bottom row, left to right: Chi Omega, Kappa Delta, Phi Mu.

## WOMEN'S SOCIAL SORORITIES

### *Chi Omega*

#### *Omicron Beta Chapter*

Established 1921

Chi Omega was founded at the University of Arkansas, April 5, 1895.

Pledge fee: \$10.00, including pledge pin.

Pledge dues: \$1.00 per month.

Initiation fee: \$59.00, including badge, one year's subscription to *Eleusis*, and national dues for one year.

Active dues: Local, \$3.00 per month.

National, \$8.00 per year.

Description of badge: Monogram of a pearl Chi over a gold Omega.

#### MEMBERS

##### *Class of 1946:*

Daphne Andrews, Barbara Black, Doris Brandt, Susan Claypool, Shirley Davis, Priscilla Fuller, Edith Harwood, Jerrie Healey, Henrietta Kapler, Margaret Knowlton, Elise Leidheiser, Beth Long (Catherine Mitchell), Barbara Nycum, Virginia Ratcliffe, \*Sally Reik, Barbara Richardson, Alicia Stauf.

##### *Class of 1947:*

Ann Anderson, Jacqueline Armour, Carol Beinbrink, Janet Campbell, Louise Cumming, Barbara Davidson, Mildred Draper, Nancy Easley, Jane Eversman, Dorothy Ferenbaugh, Janice Groh, Elizabeth Gilliam, Harriett Hochstrasser, Leontine Jones, Marjorie Oak, Sally Phillips, Marion Robinson, Susie Seay, Ruth Sinclair, Ruth Thistle, Carolyn Thomas, Virginia Turner, Virginia Ruhl.

##### *Class of 1948:*

Priscilla Barnard, Margaret Barnes, Elizabeth Bauman, Carolyn Beach, Jane Beatty, Barbara Bechtol, Mary Ellen Bovie, Ann Callahan, Barbara Holliday, Mary Ann Hook, Lucy Jones, Virginia McCarthy, Jean McOuat, Evelyn Myers, Nancy Noyes, Phyllis Coulter, Betty Jean Goodé, Bette Hotopp, Alice Newbill.

---

Asterisk (\*) indicates president.

*Kappa Alpha Theta*  
*Beta Lambda Chapter*  
Established 1922

Kappa Alpha Theta was founded at De Pauw University, Greencastle, Indiana, in 1870.

Pledge fee: \$10.00, including pledge pin.

Pledge dues: \$2.50 per month.

Initiation fee: \$50.00 including subscription to *Kappa Alpha Theta*.

Active dues: \$5.50 per month, including national dues.

Description of badge: Kite-shaped, black enamel, white chevron with Greek letters. Two diamonds.

MEMBERS

*Class of 1946:*

Dorothy Fitzcharles, Virginia Hartnell, Eleanor Holden, Harriet Irvin, Marjorie Kellogg, Joan Kueffner, Joyce Le Craw, Tillie Mills, Carol Parker, Sally Lou Smith, Patricia Whitcomb, \*Marilyn Wood.

*Class of 1947:*

Isabelle Clark, Bland Devaney, Barbara LaMont, Virginia Lewis, Dorothea Shinn, Audrey Smith, Bobette Steeley, Virginia Tunstall, Miriam White, Jane Whitmore, Bonnie Wolfgram.

*Class of 1948:*

Margaret Ballentine, Jean Bevans, Mary Minton Cregar, Barbara Hughes, Nancy Jackson, Priscilla Leggett, Nancy Laughlin, Mary Louise McNabb, Dorothy Morris, Jane Seaton, Nora Spann.

*Pledges:*

Dorothy Baitsell, Frances Brigham, Katherine Hardiman, Carol Talbot.

---

Asterisk (\*) indicates president.

*Kappa Kappa Gamma*  
*Gamma Kappa Chapter*  
Established 1923

Kappa Kappa Gamma Fraternity was founded at Monmouth College, Monmouth, Illinois, on October 13, 1870.

Pledge fee: \$5.00, including pledge pin.

Pledge dues: \$2.00 per month.

House fund pledge: \$5.00, payable at time of pledging; \$5.00, payable at initiation.

Initiation fee: \$35.00, including subscription to Key.

Active dues: Local, \$5.50 per month; National \$4.00 per semester.

Description of badge: Gold key, plain or set with pearls or sapphires or diamonds.

MEMBERS

*Class of 1946:*

Barbara Jean Adams, Beverley Bose, Fran Buttler, Ann Davison, \*Mary DeVol, Mary Sue Ebeling, Betty Grodecour, Betsy Hall, Martha Humbert, Helen Jordan, Phyllis Laskey, Clara Moses, Dot Ould, Dot Schwarz, Virginia Stephens, Mary Lou Strong.

*Class of 1947:*

Evelyn Bell, Joan Crawford, Dulcie Daniels, Peggy Darby, Barbara DuBorg, Pat Jones, Shen Kressler, Jeanne McKay, Meg Megerle, Barbara Stevens, Betty Jane Taylor, Eleanor Weber.

*Class of 1948:*

Audre Barthold, Mary Battle, Mary Belford, Jean Black, Barbara Davis, Betsy DeVol, Eleanor Duvoisin, Marnie Haynes, Peggy Helms, Eloise Hughes, Betty Ann Kah, Kay Larson, Jean Morgan, Nancy Morton, Shirley Ostermeyer, Emily Russell, Ann Seitz, Jane Spencer, Sidney Strider, Helen Thomson, Marian Wadsworth, Muriel Wadsworth.

---

Asterisk (\*) indicates president.



*Pi Beta Phi*  
*Virginia Gamma Chapter*  
Established 1925

Pi Beta Phi was founded under the name of I. C. Sorosis, at Monmouth College, Monmouth, Illinois.

Pledge fee: \$10.00, including pledge pin.

Pledge dues: 75c per month.

Iniation fee: \$65.00, includes badge, life subscription to *Arrow*, *Pi Beta Phi Directory*, local dues for one year and national dues for four years.

Active dues: \$36.00 per year after first year. No national dues.

Description of badge: Gold Arrow.

MEMBERS

*Class of 1946:*

Versie Rae Brown, Martha Colflesh, Mary Elford, Jane Fessler, Jan Freer, Mary Gray, Nancy Grube, Dorothy Hammer, Eleanor Herman, Nancy Keane, Betty Lawson, Donna Lepper, \*Marcia Levering, Betty Mills, Janet O'Donoghue, Ann Singer, Marian Webb, Patricia Wheelan, Cherry Whitehurst.

*Class of 1947:*

Jane Achenbach, Clarice Garrison, Barbara Grant, Jean Lamb, Frances Moore, Barbara Nesbit, Elaine Ott, Phyllis Shade, Thelma Murray, Laurie Pritchard, Marjorie Williams, Jacqueline Wilkinson.

*Class of 1948:*

Sara Fowlkes, Jo Hickey, Joan Kelley, Sylvia Lagerholm, Jean McLeod, Shirley Sprague, Nell Springer, Doiores Sunstrum, Marjorie Wedge, Priscilla Wheelan.

*Pledges:*

Ann Andrews, Libby Baynard, Emma Buchanan, Gloria duBusc, Jo-Ann Dunn, Sally Freer, Betsy Griffen, Winifred Lichty, Lorabeth Moore, Barbara Musselman, Peggy Pennewell, Shirley Seibert.

---

Asterisk (\*) indicates president.

*Phi Mu*  
*Gamma Alpha Chapter*  
Established 1926

Phi Mu was founded at Wesleyan College, Macon, Georgia, in 1852.

Pledge fee: \$10.00, including pledge pin.

Pledge dues: \$1.50 per month.

Initiation fee: \$55.00, including badge, subscription to *Aglaia*, all other publications.

Active dues: Local, \$3.25 per month; National, \$8.00 per year.

Description of badge: Shield of black enamel and gold displaying hand clasping heart and Greek letters.

MEMBERS

*Class of 1946:*

Gloria Beale, Barbara Bellen, Shirley Dixon, Jean Goodwyn, Dorothy Green, \*Gunesh Guran, Elaine Hall, Sally Rue Justis, Ann Mason, Eve Sturtevant.

*Class of 1947:*

India Boozer, Priscilla Cobb, Kitty Coburn, Elsie Cottam, Betty Cranston, Ellen Diggs, Marjorie Dykes, Millie Gaito, Emily Scott, Marise Small, Nancy Tucker, Eleanor Westbrook.

*Class of 1948:*

Vera Beck, Lois Blake, Betty Breed, Winona Colona, Helen Franklin, B. Gene Hatcher, Mimi Miller, Gerry Post, Shirley Robinson, Iris Tolley, Mary Yarborough.

*Pledges:*

Peggy LaGattuta, Joan Warrick.

---

Asterisk (\*) indicates president.

## *Alpha Chi Omega*

### *Beta Delta Chapter*

Established 1927

Alpha Chi Omega was founded by a group of students at the School of Music at DePauw University in Greencastle, Indiana, in 1885.

Pledge fee: \$10.00, including pledge pin and pledge book.

Pledge dues: \$2.50 per month.

Initiation fee: \$50.00, including badge, subscription to *Lyre*, all books.

Active dues: \$4.00 per month, plus \$5.00 per year for house fee.

Description of badge: Gold Greek Lyre, jewelled.

#### MEMBERS

##### *Class of 1946:*

Adina Allen, Joanne Armstrong, Mary Baker, Betty Marie Ellett, Mary Louise Ellett, Mary Brooks Harper, Olive Ann Hasty, Mary Laura Hoey, Gloria Iden, Carol MacNeil, Betty Rose Marvin, Sharon McCloskey, \*Pam Pauly, Monie Price, Shirley Printz, June Sellars, Ann Vineyard.

##### *Class of 1947:*

Dorothy Bacon, Peggy Bubb, June Haller, Joan LeFevre, Patricia Nunes, Nancy Seal, Marilyn Woodberry, Joy Wrigley.

##### *Class of 1948:*

Elaine Akehurst, Ann Allan, Mary Alice Cooper, Macy Diggs, Janet Fehm, Nancy Hall, Carolyn Henry, Mary Keeney, Ann Lawrence, Lois Loucks, Peggy Moser, Anne Moore, Virginia Northcott, Harriett Rigby, Mary Elizabeth Rigby, Mary Sagnette, Barbara Skoog, Patricia Snyder, Peggy Thompson, Virginia Weston, Virginia Whittemore, Virginia Wierum.

##### *Pledges:*

Betty Coumbe, Muriel Garcin, Lucy Laib, Toni Martensen, Maby Watson.

Asterisk (\*) indicates president.

*Kappa Delta*  
*Alpha Pi Chapter*  
Established 1928

Kappa Delta was founded at Farmville State Teachers College, Farmville, Virginia, October 23, 1897.

Pledge fee: \$15.00, including pledge pin.

Pledge dues: \$2.25 per month.

Initiation fee: \$40.00, including badge, national dues one year, life subscription to *Angelos*, membership certificate, song book, and payment on house note.

Active dues: Local, \$3.75 per month.

National, \$5.00 per year.

Description of badge: Diamond-shaped with black center.

MEMBERS

*Class of 1946:*

Joy Allen, \*Peggy Burdick, Virginia Graham, Janet Hilton, Dorothy Hope, Ann Johnson, Peggy Smith, Betty Spicer, Judy Thorpe.

*Class of 1947:*

Marge Bowman, Jean Cline, Lois Fredenburgh, Lois Frost, Joan Kelley, Jane McDowell, Ruth Paul, Kitty Settle, Penny Jessee, Helen Staples.

*Class of 1948:*

Ann Allen, Evelyn Armstrong, Gussie Arnold, Marjorie Beers, Jean Bennett, Ann Bennett, Dana Brandes, Ruth Chase, Jeanne Corby, Dolly Cox, Audrey Fajans, Elaine Fox, Jane Godard, Betty Hafner, Jackie Hale, Virginia Jewell, Mary McGinnis, Mary Ann McKinney, Libby McLaughlin, Shirley Major, Carol Newman, Jean Peter, Gin Rassinier, Robbie Robinson, Margo Ross, Ty Thysen, Annis Walker, Willie Willis, Elaine Wilsey.

*Pledges:*

Kay Foltz, Dee Isele, Audrey Kneece, Ruth Lynch, Jean Owens, Vee Price, Beth Walton.

Asterisk (\*) indicates president.

## *Delta Delta Delta*

### *Alpha Mu Chapter*

Established 1928

Delta Delta Delta was founded at Boston University, Thanksgiving Eve, 1888.

Pledge fee: \$10.00, including pledge pin.

Pledge dues: \$2.00 per month.

Initiation fee: \$55.00, including badge, subscription to *Trident*.

Active dues: Local, \$4.00 per month.

National, \$9.00 per year.

Description of badge: Gold crescent with three pearl stars.

#### MEMBERS

##### *Class of 1946:*

Martha Adams, Ann Batchelder, \*Jean Beazley, Jean Bormann, Ann Bruce, Brenda Cahill, Betty Dahlberg, Keith, Ann Gamble, Polly Krotts, Patricia Martin, Betty Jane Relph, Joyce Remsberg, Helen Robinson, Dorothy Scarborough, Patricia Slosson, Barbara Thompson, Roberta Volkert, Margery Wallace.

##### *Class of 1947:*

Virginia Bourlay, Norma Fehse, Nellie Jackson, Joan Kennington, Gloria McCawley, Elizabeth Parham, Evelyn Stryker, Virginia Townes, Mary Wood, Virginia Wright.

##### *Class of 1948:*

Mary Clary, Jane Cornwell, Patricia Crovo, Frances Fleming, Nancy Holland, Nancy Hynson, Arleen McLean, Elizabeth Mylander, Janice Nairn, Helen Annette Newing, Elaine O'Hare, Alice Peebles, Jo-Ann Prince, Mary Prince, Elizabeth Richardson, Janet Wessling, Patricia Young.

##### *Pledges:*

Elizabeth Ewart, Mary Keen, Virginia Rowe.

---

Asterisk (\*) indicates president.

*Gamma Phi Beta*  
*Alpha Chi Chapter*  
Established 1933

The Gamma Phi Beta Sorority was founded November 11, 1874, at Syracuse University.

Pledge fee: \$15.00, including pledge pin.

Pledge dues: \$3.00 per month.

Initiation fee: \$50.00, including life subscription to *Crescent*, life alumnae membership.

Active dues: \$5.00 per month.

Description of badge: Monogram of three letters enclosed in a crescent.

MEMBERS

*Class of 1946:*

Joy Bryan, Betty Cutshall, \*Dorothy Grove, Margy Hartcopf, Jean McCreight, Joan Sayers, Gayle Schwinn, Betty Jane Seely, Alice White, Dorothy Williams.

*Class of 1947:*

Mary Daffron, Patricia Dancy, Helen Fisher, Jo Ann Gage, Doris Gonzolez, Rita Marriott, Beth Spain, Betty Sue Wade, Peggy Walker.

*Class of 1948:*

Martha Adams, Marian Allen, Frances Baker, Barbara Baldwin, Jane Bast, Barbara Brink, Elsie Cappelman, Mary Cappelman, Betty Gall, Mary Hardie, Olive Krastell, Martha Lamborn, Nancy MacLean, Elaine Niebuhr, Marian Pratt, Evelyn Rapee, Blanco Rollins, Barbara Rommel, Ruth Schank, Peggy Shaw, Alice Sloan, Helen Stapf, Betty Sybert.

*Pledges:*

Edith Horne, Ann Kohler, Carol Passow, Barbara Simmons, Patricia Smith, Mary Timmons, Dora Waring.

---

Asterisk (\*) indicates president.

# *Athletics*

## PHYSICAL EDUCATION

All students are required to take physical education.

The physical education program is organized and conducted to give every student skilled instructions in a number of activities. The policy of the Department is to allow students the opportunity to select activities. Each activity is of eight weeks' duration. Especial emphasis is placed on golf, swimming, and tennis, and students may take advanced work in these activities. Instruction is provided in the following activity courses: apparatus, badminton, basketball, boxing, dancing, fencing, touch football, golf, handball, individual activities, riding, softball, swimming, tennis, track and field, tumbling, volley ball, and wrestling. The men's program this year also included a program in commando gym.

### *Intramural Sports*

Provision is made for participation in the following intramural sports: badminton, horseshoes, touch football, tennis, track and field athletics, boxing, wrestling, and swimming. Because of the body building, social, and character-forming values of competitive sport, every encouragement is made to have students enter into one or more forms of intramural athletics. Schedules are arranged for dormitory, fraternity, and independent competition.

### *Facilities*

The George Preston Blow Gymnasium was built in 1924. In this gymnasium are two basketball courts, swimming pool, three handball courts, volley ball courts, showers, lockers, trophy room and athletic administrative offices and social room.

The Women's Gymnasium and swimming pool are located in Jefferson Hall.

Cary Field Park, named in honor of T. Archibald Cary, provides the following facilities: tennis courts for

men and women, hockey field for women, archery range for women, baseball field for men, stadium for football and track and field athletics, with a seating capacity of 9,000, practice fields for varsity and freshman football, and space for softball and intramural games.

## ATHLETICS FOR MEN

### *Intercollegiate Athletics*

The general supervision of athletics for men has been delegated by the President to the Faculty Committee on Athletics.

The College is a member of the Southern Conference, and the Chairman of the Faculty Committee is charged with administration of the Southern Conference rules on eligibility.

A competent staff of coaches provides instruction in various sports. A full program of intercollegiate athletics has been scheduled for the 1945-46 session.

### *Faculty Committee on Athletics*

SHARVY UMBECK

*(Chairman)*

R. G. ROBB

J. E. POMFRET

C. J. DUKE

R. N. MCCRAY

} *ex-officio*

### *Athletic Staff*

R. N. MCCRAY.....	<i>Director of Athletics and Head Coach</i>
MARVIN BASS.....	<i>Assistant Coach</i>
ERIC TIPTON.....	<i>Assistant Coach</i>
JAMES EASTERBROOK.....	<i>Assistant Coach</i>
S. B. HOLT.....	<i>Assistant Coach</i>
KENNETH RAWLINSON..	<i>Trainer</i>



# ATHLETICS FOR WOMEN

## *Women's Athletic Council*

### *Faculty Members*

MARGUERITE WYNNE-ROBERTS .....	<i>Chairman</i>
MARTHA BARKSDALE	
MARION REEDER	
CAROLINE SINCLAIR .....	<i>Ex-Officio</i>

### *Student Members*

FRANCES BUTLER .....	<i>President</i>
BONNIE WOLFGRAM .....	<i>Point Recorder</i>
BETTY LITTLEFIELD .....	<i>Secretary</i>

Women's athletics are conducted at William and Mary to afford every student an opportunity to participate in sports activities. Limited intercollegiate contests are held in certain activities and recognition is given to honorary varsity teams.

The intra-mural program of the Women's Athletic Association offers an opportunity to all to engage in some form of competition and to win recognition for participation and skill. One or more teams are entered by each dormitory and sorority in competitive sports events. The winning teams receive points which are credited toward yearly awards for the residence groups, and each individual receives points based on her team's standing in various tournaments.

Awards for accomplishment are the intra-mural emblem, inter-collegiate monogram, and individual honor awards. When an individual accumulates 350 points, she is awarded an intra-mural emblem. The honor award, a gold medal, is given to reward the sports accomplishments of an individual who attains a total of 500 points earned by playing on a varsity team, participating in the dormitory or sorority leagues, open meets or dance club, and by passing tests or serving in a managerial capacity.

HELEN BLACK.....	<i>Faculty Head of Intra-murals</i>
PEGGY BURDICK.....	<i>Student Head of Intra-murals</i>

## *Managers*

<i>Publicity</i> .....	GLORIA RANKIN, Head; BETTY COUMBE, NANCY MORTON, MARJORIE WILLIAMS
<i>Archery</i> .....	MARGUERITE WALKER
<i>Badminton</i> .....	GLORIA MCCAWLEY
<i>Basketball</i> .....	JACQUELINE ARMOR, NORMA FEHSE, ASST.
<i>Dance</i> .....	CAROLYN THOMAS
<i>Fencing</i> .....	JANE ANN HOGG
<i>Hockey</i> .....	HARRIET HOCHSTRASSER, CAROLYN HENRY
<i>Hostess</i> .....	BARBARA HUGHES
<i>Swimming</i> .....	JO ANN PRICE, Head of Life Saving; CAROL BEINBRINK, Swimming Head; MARTHANNE ADAMS, ASST.
<i>Tennis</i> .....	DOROTHY BAITSELL
<i>Softball</i> .....	INEZ SMITH, BETTY MULLINIX, ASST.
<i>Soccer</i> .....	To be chosen

# Directory

## OFFICERS OF ADMINISTRATION

- President*—JOHN E. POMFRET, 101 Marshall-Wythe Hall.
- Dean of the Faculty*—JAMES W. MILLER, 111 Marshall-Wythe Hall.
- Dean of Women*—GRACE WARREN LANDRUM, 112 Marshall-Wythe Hall.
- Acting Dean of Men*—SHARVY G. UMBECK, 112 Marshall-Wythe Hall.
- Assistant Dean of Women*—MARGUERITE WYNNE-ROBERTS, Barrett Hall.
- Registrar*—KATHLEEN ALSOP, 116 Marshall-Wythe Hall.
- Acting Chairman of the Committee on Admissions*—DOROTHY HOSFORD, 112 Marshall-Wythe Hall.
- Bursar*—CHARLES J. DUKE, JR., 101 Marshall-Wythe Hall.
- Auditor*—VERNON L. NUNN, 102 Marshall-Wythe Hall.
- Librarian Emeritus*—E. G. SWEM.
- Acting Librarian*—MARGARET GALPHIN.
- College Physician*—B. I. BELL, M. D., First Floor, the David J. King Infirmary.

---

*Acting Executive Secretary of the Society of the Alumni*—ALYSE TYLER, Brafferton Kitchen.

---

## FACULTY

- ACOMB, EVELYN M. *Acting Asst. Prof. of History.* Office, 208 Rogers Hall; Residence, 119 Chandler Court; Telephone 53-W.
- ADAIR, DOUGLAS G. *Asst. Prof. of History.* Office, 208 Rogers Hall; Residence, 510 Newport Avenue; Telephone 446-W.

- ALSOP, KATHLEEN. *Asst. Prof. of Secretarial Science and Registrar.* Office, 116 Marshall-Wythe Hall; Residence, Faculty Apartments; Telephone 206-W.
- ARMSTRONG, ALFRED R. *Asso. Prof. of Chemistry.* Office, 202 Rogers Hall.
- BARKSDALE, MARTHA. *Asso. Prof. of Physical Education.* Office, Jefferson Gymnasium; Residence, 616 College Terrace; Telephone 235-W.
- BARRETT, JOSEPH E. *Lecturer in Psychology.* Office, Eastern State Hospital.
- BASS, MARVIN. *Athletics Coach.* Office, Blow Gymnasium; Residence, Brown Annex.
- BLACK, HELEN H. *Instructor in Physical Education.* Office, Jefferson Gymnasium; Residence, 616 College Terrace.
- BLANK, GRACE J. *Asst. Prof. of Biology.* Office, 111 Washington Hall; Residence, 134 Chandler Court.
- BOYT, JOHN T. *Acting Instructor in Fine Arts.* Office, Fine Arts Building; Residence, President's Kitchen.
- BUCK, W. ROGER, III. *Acting Asst. Prof. of Chemistry.* Office, 207 Rogers Hall; Residence, 704 College Terrace; Telephone 573-J.
- CALDWELL, ROBERT G. *Associate Professor of Sociology.* Office, 307 Marshall-Wythe Hall.
- CALKINS, ELEANOR. *Asst. Prof. of Mathematics.* Office, 201 Washington Hall; Residence, 121 Chandler Court.
- CARTER, J. D. *Asso. Prof. of French and Spanish.* Office, 309 Washington Hall; Residence, 207 Griffin Avenue; Telephone 130-M.
- CLARK, G. GLENWOOD. *Asso. Prof. of English.* Office, 209 Washington Hall; Residence, 110 North Boundary Street; Telephone 182-M.
- COREY, HIBBERT D. *Professor of Economics and Business Administration.* Office, 318 Marshall-Wythe Hall; Residence, Capitol Landing Road; Telephone 123-J.

CROSBY, ARMINA E. *Instructor in Library Science.* Office, Library; Residence, 234 Jamestown Road; Telephone 53-J.

CUMMINGS, LILLIAN A. *Prof. of Home Economics.* Office, 307 Washington Hall; Residence, 427 Scotland Street; Telephone 378-J.

DAVIS, DONALD W. *Prof. of Biology.* Office, 105 Washington Hall; Residence, 349 Scotland Street; Telephone 242-M.

DUKE, CHARLES J., JR. *Bursar.* Office, 101 Marshall-Wythe Hall; Residence, 205 Richmond Road; Telephone 689.

EASTERBROOK, JAMES. *Athletics Coach.* Office, Blow Gymnasium.

FEHR, CARL A. *Asst. Prof. of Fine Arts.* Office, Fine Arts Building.

FLOYD, JOE S., JR. *Asst. Prof. of Economics and Business Administration.* Office, 313 Marshall-Wythe Building.

FOLTIN, EDGAR M. *Prof. of Psychology and Jurisprudence.* Office, 313 Wren Building; Residence, Matoaka Court; Telephone 536-J.

GALPHIN, MARGARET. *Acting Librarian.* Office, Library; Residence, Pollard Park; Telephone 225-J.

GIBBS, WAYNE F. *Prof. of Accountancy.* Office, 304 Marshall-Wythe Hall; Residence, 606 College Terrace; Telephone 173-J.

GRAHAM, MAE. *Asso. Prof. of Library Science.* Office, Library; Residence, 211 Cary Street; Telephone 523-W.

GREGORY, CHARLES D. *Asso. Prof. of Mathematics.* Office, 314 Rogers Hall; Residence, 708 Richmond Road; Telephone 257-W.

GUY, WILLIAM G. *Prof. of Chemistry.* Office, 202 Rogers Hall; Residence, 600 Pollard Park; Telephone 213-J.

HAIGH, ANDREW C. *Asso. Prof. of Fine Arts.* Office, Fine Arts Building; Residence, Semple House Kitchen.

- HARRISON, CHARLES T. *Prof. of English.* Office, 302 Wren Building; Residence, 13 Indian Springs Road; Telephone 879.
- HASEROT, FRANCIS S. *Asso. Prof. of Philosophy.* Office, 205 Washington Hall; Residence Jamestown Road; Telephone 441-J.
- HELSETH, INGA O. *Prof. of Education.* Office, 211 Washington Hall; Residence, 119 Chandler Court; Telephone 53-W.
- HENNEMAN, RICHARD H. *Asso. Prof. of Psychology.* Office, 313 Wren Building.
- HOLT, S. B. *Athletics Coach.* Office, Blow Gymnasium.
- HOPKINS, SEWELL H. *Asso. Biologist in the Virginia Fisheries Laboratory.* Office, 105 Washington Hall.
- HUNT, ALTHEA. *Asso. Prof. of Fine Arts.* Office, Wren Kitchen; Residence, Faculty Apartments; Telephone 532-W.
- ITURRALDE, MAXIMO. *Acting Asso. Prof. of Modern Languages.* Office, 311 Washington Hall; Residence, 24 Taliaferro Hall.
- ITURRALDE, VICTOR. *Asso. Prof. of Spanish and French.* Office, 311 Washington Hall; Residence, 703 College Terrace; Telephone 375-J.
- JACKSON, JESS H. *Professor of English.* Office, 208 Washington Hall; Residence, Little Neck o'Land; Telephone 441-W.
- JOHNSON, J. R. L. *Prof. of English, Emeritus.* Residence, 134 Jamestown Road; Telephone 268-W.
- JOHNSON, ROBERT E. *Acting Instructor in Fine Arts.* Office, Fine Arts Building; Residence, 153 Richmond Road.
- JONES, W. MELVILLE. *Asso. Prof. of English.* Office, 302 Wren Building; Residence, 14 Indian Springs Road; Telephone 869-M.
- KERNODLE, R. WAYNE. *Instructor in Sociology.* Office, 307 Marshall-Wythe Hall.

KOCHER, H. LAWRENCE. *Lecturer in Fine Arts.* Office, Fine Arts Building; Residence, Coke-Garrett House.

LANDRUM, GRACE WARREN. *Prof. of English and Dean of Women.* Office, 112 Marshall-Wythe Hall; Residence, 404 Griffin Avenue; Telephone 126-J.

MCCARY, B. C. *Asso. Prof. of French.* Office, 309 Washington Hall; Residence, 614 Richmond Road; Telephone 666-W.

MCCORMICK, W. W. *Professor of Physics.* Office, 117 Rogers Hall.

MCCRAY, R. N. *Head Coach, Director of Athletics, and Asst. Prof. of Physical Education.* Office, Blow Gymnasium; Residence, Prince George Street; Telephone 537-W.

MCCULLY, BRUCE T. *Asst. Prof. of History.* Office, 208 Rogers Hall; Residence, 199 Armistead Avenue; Telephone 556-R.

MACKIN, JOHN G. *Asso. Biologist in the Virginia Fisheries Laboratory.* Office, 109 Washington Hall.

MACY, PIERRE. *Prof. of Modern Languages.* Office, 311 Washington Hall; Residence, 202 North Henry Street; Telephone 567-W.

MARSH, CHARLES F. *Professor of Economics and Business Administration.* Office, 313 Marshall-Wythe Hall; Residence, 705 Powell Street; Telephone 170-W.

MENZEL, R. WINSTON. *Assistant Biologist in the Virginia Fisheries Laboratory.* Office, 107 Washington Hall; Residence, Yorktown; Telephone Yorktown 2621.

MERRYMON, W. W. *Asso. Prof. of Physics.* Office, 113 Rogers Hall; Residence, 714 College Terrace; Telephone 235-R.

MERTON, E. STEPHEN. *Acting Asst. Prof. of English.* Office, 208 Washington Hall; Residence, 140B Chandler Court.

MILLER, JAMES W. *Prof. of Philosophy and Dean of the Faculty.* Office, 111 Marshall-Wythe Hall; Residence, 11 Indian Springs Road; Telephone 692-W.

- MORTON, RICHARD L. *Prof. of History*. Office, 207 Rogers Hall or the Goodwin Building; Residence, 116 Chandler Court; Telephone 163.
- MOSS, W. W. *Prof. of Government*. Office, 319 Marshall-Wythe Hall; Residence, 704 Powell Street; Telephone 418-W.
- NELSON, LAWRENCE G. *Acting Asst. Prof. of English*. Office, 207 Washington Hall; Residence, 202 Jamestown Road; Telephone 245-J.
- NEWCOMBE, CURTIS L. *Biologist and Director of the Virginia Fisheries Laboratory, and Assistant Prof. of Biology*. Office, 109 Washington Hall; Residence, Prince George Street.
- NUNN, VERNON L. *Auditor*. Office, 102 Marshall-Wythe Hall; Residence, Richmond Road; Telephone 65-W.
- OWEN, MALCOLM. *Asst. Biologist in the Virginia Fisheries Laboratory*. Office, 107 Washington Hall.
- PATE, JAMES E. *Prof. of Political Science*. Office, 318 Marshall-Wythe Hall; Residence, Jamestown Road; Telephone 195-M.
- PHALEN, H. R. *Asso. Prof. of Mathematics*. Office, 201 Washington Hall; Residence, 404 Griffin Avenue, Telephone 126-M.
- POMFRET, JOHN EDWIN. *President*. Office, 101 Marshall-Wythe Hall; Residence, The President's House; Telephone 30.
- RAWLINSON, KENNETH. *Asso. Prof. of Physical Education*. Office, Blow Gymnasium; Residence, 616 Prince George Street; Telephone 663-R.
- REEDER, MARION D. *Asst. Prof. of Physical Education*. Office, Jefferson Gymnasium; Residence, Brown Annex; Telephone 429-M.
- ROBB, R. G. *Prof. of Organic Chemistry*. Office, 306 Rogers Hall; Residence, Chandler Court; Telephone 135-R.



- RYAN, GEORGE J. *Prof. of Ancient Languages.* Office, 308 Washington Hall; Residence, 216 Jamestown Road; Telephone 432.
- RYLAND, ARCHIE G. *Prof. of French.* Office, 315 Washington Hall; Residence, 331 East Francis Street; Telephone 470.
- SINCLAIR, CAROLINE. *Asso. Prof. of Physical Education.* Office, Jefferson Gymnasium; Residence, 218 Jamestown Road.
- SOUTHWORTH, S. DONALD. *Prof. of Economics.* Office, 218 Marshall-Wythe Hall.
- STETSON, JOHN M. *Prof. of Mathematics.* Office, 201 Washington Hall; Residence, 232 Jamestown Road; Telephone 486-M.
- STEWART, ALAN C. *Asst. Prof. of Fine Arts.* Office, Fine Arts Building; Residence, 616 Prince George Street.
- STEWART, JEAN J. *Asso. Prof. of Home Economics.* Office, 307 Washington Hall; Residence, 701 Powell Street.
- STILES, LINDLEY J. *Asso. Prof. of Education.* Office, 211 Washington Hall.
- STRICKLAND, J. C. *Acting Asst. Prof. of Biology.* Office, 113 Washington Hall; Residence, Court House Green; Telephone 280-W.
- SWEM, EARL G. *Librarian Emeritus.* Residence, 119 Chandler Court; Telephone 53-W.
- TAYLOR, R. L. *Asso. Prof. of Biology.* Office, 102 Washington Hall; Residence, 627 Powell Street; Telephone 195-R.
- THORNE, THOMAS. *Asso. Prof. of Fine Arts.* Office, Fine Arts Building; Residence, Semple House; Telephone 364-J.
- TIPTON, ERIC. *Athletics Coach.* Office, Blow Gymnasium.
- TOWLE, H. LEDYARD. *Lecturer in Business Administration.* Office, 318 Marshall-Wythe Hall.

TURBEVILLE, HAZEL. *Asst. Prof. of Secretarial Science.* Office, 301 Rogers Hall; Residence, 312 Jamestown Road.

TUTTLE, MARIE H. *Acting Instructor in Physics.* Office, 101 Rogers Hall; Residence, Jamestown Road; Telephone 191-W-1.

UMBECK, SHARVY G. *Prof. of Sociology and Acting Dean of Men.* Office, 112 Marshall-Wythe Hall; Residence, 117 Matoaka Court; Telephone 147-J.

WAGENER, A. PELZER. *Prof. of Ancient Languages.* Office, 305 Washington Hall; Residence, 702 Jamestown Road; Telephone 177-R.

WEEKS, HELEN F. *Prof. of Education.* Office, 211 Washington Hall; Residence, 616 Blair Avenue; Telephone 173-W.

WILKIN, ALMA. *Asst. Prof. of Home Economics.* Office, 302 Washington Hall; Residence, 197 Armistead Avenue; Telephone 556-W.

WOODBRIDGE, D. W. *Prof. of Jurisprudence, Acting Dean of the Department of Jurisprudence, and Military Adviser.* Office, 312 Marshall-Wythe Hall; Residence, 118 Griffin Avenue; Telephone 139-J.

WYNNE-ROBERTS, MARGUERITE. *Asst. Dean of Women.* Office, Barrett Hall; Residence, 454 E. Duke of Gloucester Street; Telephone 193.

## COLLEGE TELEPHONE NUMBERS

*Administration Building .....	300
Alpha Chi Omega House .....	8-J
Alumni Association Office .....	269
Assistant Dean of Women, Miss Marguerite Wynne-Roberts .....	208
Athletic Association (Blow Gymnasium) .....	55
Barrett Hall .....	782-784
Brown Hall .....	787
Chandler Hall .....	780
Chi Omega House .....	174
Delta Delta Delta .....	472
Dining Hall (Office) .....	114
Dining Hall (Pay) .....	760
Fine Arts Department .....	367-J
Gamma Phi Beta House .....	266
Home Management House .....	556-W
Infirmery .....	156
Jefferson Hall .....	766
Kappa Alpha Theta House .....	473
Kappa Delta House .....	155
Kappa Kappa Gamma House .....	474
Monroe Hall .....	777
News Release Bureau, Wren Building .....	550
Old Dominion Hall (Chaplain School) .....	765
Phi Mu House .....	492
Pi Beta Phi House .....	82
Power Plant .....	303
Taliaferro Dining Hall .....	367-M
Taliaferro Hall .....	742
Tyler Hall .....	751
Student Publications Office .....	157-W
Wigwam .....	864
Women's Phys. Ed. Department (Jefferson Gymnasium) .....	548

\*Switchboard connecting office of the President, Bursar, Auditor, Registrar, Deans, Library, Placement Bureau, and the Power Plant.

