

THE
INDIAN HANDBOOK



*The College of William and Mary
in Virginia*

1941-1942

IDENTIFICATION

College of William and Mary, Williamsburg, Va.

Name.....

Home Address.....

College Address.....

Telephone No..... Class.....


In case of accident, notify.....

.....

THE
INDIAN HANDBOOK
1941-1942



*Information and advice concerning
the College of William and Mary in Virginia
prepared for the class of 1945*



Digitized by the Internet Archive
in 2012 with funding from
LYRASIS Members and Sloan Foundation

Table of Contents



	PAGE
College Telephone Numbers.....	3 of Cover
College Calendar, 1941-42.....	4
Illustration—Statue of Lord Botetourt	6
Description of Statue of Lord Botetourt.....	7
Historical Sketch	9
Priorities of William and Mary.....	13
The Honor System	14
Discipline	17
Rules and Regulations for Freshmen.....	19
Songs and Cheers	21
Miscellaneous	27
William and Mary Student Government Constitu- tion	36
Student Assembly By-Laws	39
Student Government Officers	49
Class Officers	51
General Cooperative Committee	52
Men's Honor Council	53
Women Students' Cooperative Government.....	54
Religious Organizations	55
Church Directory	58
Athletics for Men	60
Directory of Buildings	64
Map of Campus	66
Athletics for Women	68
Publications	70
College Societies	71
Fraternity Regulations	75
Men's Social Fraternities	78
Women's Social Sororities	100
Officers of Administration	122
Faculty	123

College Calendar, 1941-1942



1941

First Semester

SEPTEMBER 15-18	ORIENTATION PERIOD (MONDAY-THURSDAY)
SEPTEMBER 19-20	REGISTRATION (FRIDAY-SATURDAY)
SEPTEMBER 22	BEGINNING OF CLASSES: 8 A. M. (MONDAY)
SEPTEMBER 26	AUTUMN CONVOCATION: 11 A. M. (FRIDAY)
OCTOBER 15	HONORS CONVOCATION: 10 A. M. (WEDNESDAY)
NOVEMBER 20	THANKSGIVING HOLIDAY
DECEMBER 20	BEGINNING OF CHRISTMAS RECESS: 12 NOON (SATURDAY)

1942

JANUARY 5	END OF CHRISTMAS RECESS: 11 A. M. (MONDAY)
JANUARY 15	END OF CLASSES: 4 P. M. (THURSDAY)
JANUARY 16-17	PRE-EXAMINATION PERIOD (FRIDAY-SATURDAY)
JANUARY 19-29	MID-YEAR EXAMINATIONS (MONDAY-THURSDAY)

Second Semester

JANUARY 30-31	REGISTRATION (FRIDAY-SATURDAY)
FEBRUARY 2	BEGINNING OF CLASSES: 8 A. M. (MONDAY)
*FEBRUARY 9	CHARTER DAY CONVOCATION: 11 A. M. (MONDAY)

*Inasmuch as Charter Day, February 8, falls on a Sunday in 1942, the convocation to celebrate it will be held on Monday, February 9.

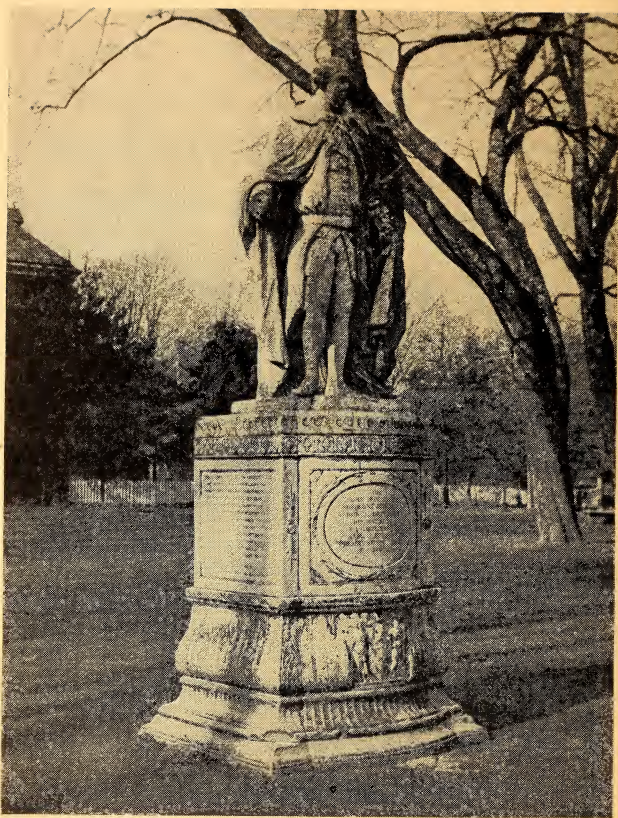
1942

Second Semester

APRIL	4	BEGINNING OF SPRING RECESS: 12 NOON (SATURDAY)
APRIL	13	END OF SPRING RECESS: 11 A. M. (MONDAY)
MAY	21	END OF CLASSES: 4 P. M. (THURSDAY)
MAY	22-23	PRE-EXAMINATION PERIOD (FRIDAY-SATURDAY)
MAY	25	} FINAL EXAMINATIONS (MONDAY-THURSDAY)
TO		
JUNE	4	
JUNE	5	CLASS DAY (FRIDAY)
JUNE	6	ALUMNI DAY (SATURDAY)
JUNE	7	BACCALAUREATE DAY (SUNDAY)
JUNE	8	COMMENCEMENT DAY (MONDAY)

Summer Session

JUNE	18	BEGINNING OF SUMMER SESSION (THURSDAY)
AUGUST	20	END OF SUMMER SESSION (THURSDAY)



THE RIGHT HONOURABLE NORBORNE BERKELEY, BARON DE
BOTETOURT, HIS MAJESTIE'S LATE LIEUTENANT AND
GOVERNOR GENERAL OF THE COLONY AND
DOMINION OF VIRGINIA

Statue of Lord Botetourt



The statue of Norborne Berkeley, Baron de Botetourt, has looked down upon successive generations of William and Mary students since 1801. It is the center of tradition and reverence, connecting the present College with its colonial past. Before it, each freshman doffs his cap and to it each freshman woman curtsies. Hallowed by tradition and revered for its long association with William and Mary, it possesses incalculable value and is honored as a symbol of a great College.

VIRGINIANS, who heartily welcomed the arrival of their new Governor, Norborne Berkeley, Baron de Botetourt, in October, 1768, were soon to express their opposition to British infringements of their rights. Lord Botetourt, learning of the resolutions adopted by the House of Burgesses, dissolved that body. However, as John Page, Jr., wrote in May, 1769, that act did not lessen Lord Boutetourt "in their Esteem, for they suppose he was obliged to do so; he is universally esteemed here, for his great Assiduity in his Office, Condescension, good Nature & true Politeness." Governor Botetourt's death, on October 15, 1770, at the age of fifty-two, was deeply lamented throughout Virginia. At his own request, his body was buried below the College Chapel. During his residence of two years in the colony, Lord Botetourt had served as a member of the Board of Visitors of William and Mary. His interest in the College was attested by a gift which enabled the faculty to present two gold medals a year for four years as awards to students for excellence in the classics and in natural philosophy and mathematics. Thus William and Mary became the first college within the bounds of the United States to offer collegiate prizes for scholarship.

With the approval of the whole colony, in 1771, the General Assembly unanimously resolved that a marble statue, "executed by the best Statuary in England," be erected "to the Memory of our late Worthy Governor Lord Botetourt." John Norton of London, who was commissioned to have the statue carved, was extremely assiduous that the work was done "in a handsome and elegant manner." He wrote to Virginia with satisfaction upon securing the services of the sculptor, Richard Hayward, and the advice of Isaac Gosset. Hayward "luckily hit on a Block of fine Marble," and the statue, which "met with the highest Commendations in England," was shipped to the colony in the spring of 1773 by one of Hayward's masons who came over to erect it in the Capitol at Williamsburg. Virginians "universally admired" the statue which cost them around £1000. Sometime during the Revolution, when hatred of England was highest, the head and one arm were knocked off and the statue was otherwise disfigured. In 1801, the President and Professors of William and Mary purchased the statue for \$100, had it dexterously repaired, and placed it "in the center of the College walk, facing the town." There it has since remained, except for a while during the War Between the States, when it was removed to the grounds of the Eastern State Hospital for safe keeping. "It probably is the oldest extant piece of portrait statuary in America."

Historical Sketch



A FEW YEARS after the founding of Jamestown and before the Pilgrim Fathers came to America, a movement was started in Virginia to establish a college, and its construction actually was begun at a settlement called Henrico near the present City of Richmond. The Indian massacre of 1622, together with the dissolution of the Virginia Company of London in 1624, disrupted these plans, but the idea persisted. In 1660-61 the Grand Assembly of Virginia provided for the establishment of a "Colledge," but it was not until 1693 that the College of William and Mary in Virginia was chartered by the joint sovereigns whose names it bears. In the meantime, Harvard College was established; the College of William and Mary thus became the second oldest American college in actual operation. The Bishop of London was named its first chancellor and the Reverend James Blair became the first president, occupying this office until his death fifty years later. In 1695, while Jamestown was still the capital of Virginia, construction of the new college was begun at the Middle Plantation, located approximately midway between the James and York rivers. In 1699, the Middle Plantation became Williamsburg and the capital of Virginia.

Holding a royal charter, with arms granted by the College of Heralds, the College of William and Mary enjoyed the benefits of royal favor and until the American Revolution was perhaps the wealthiest college in America. While the charter provided for a president and six masters or professors, it was not until 1729 that all these professorships were established. The chairs were: Divinity, Philosophy, Oriental Languages, Mathematics, the Grammar School, and the Indian School. The Indian School was endowed from a large estate which The Honorable Robert Boyle, the great English physicist and the discoverer of "Boyle's Law," left for "pious and religious uses" and was housed in the Brafferton, named for a manor in Yorkshire from which its revenues were derived. It languished, however, and failed to survive the Revolution.

When America resisted the policies of the British Crown, William and Mary, although wealthy and under royal patronage, chose to risk the loss of material substance for principle. It furnished to the Revolutionary and early Republican periods many of the great leaders. Among the foremost of these were: Richard Bland, John Tyler, Sr., Benjamin Harrison, George Wythe, Peyton Randolph, Thomas Jefferson, Dabney Carr, John Taylor of Caroline, James Monroe, Spencer Roane, John Marshall, John Blair, and Bushrod Washington. While George Washington never attended William and Mary, he received his surveyor's commission from the College and served as its chancellor from 1789 until his death. So intimately associated is the name of William and Mary with the names of famous Americans that its history forms an important part of the history of the nation. Among the distinguished William and Mary names in the years subsequent to the great flowering of the eighteenth century are those of another President of the United States, John Tyler; John Randolph of Roanoke; Philip Pendleton Barbour; William T. Barry; Alexander H. H. Stuart; William Cabell Rives; John J. Crittenden, author of the Crittenden Compromise; Lieutenant General Winfield Scott, hero of the Mexican War and Commander of the Army of the United States in 1861; Edmund Ruffin, famous Southern agriculturist who is credited with firing the first shot at Fort Sumter; James M. Mason of "Mason and Slidell" fame; William B. Taliaferro, Major General, C.S.A.; William Barton Rogers, founder of the Massachusetts Institute of Technology; James Branch Cabell; and Admiral Cary T. Grayson. The roll of fame of William and Mary includes the first president and fifteen members of the Continental Congress, four signers of the Declaration of Independence, three presidents of the United States, one Chief Justice and three Associate Justices of the Supreme Court, thirteen Cabinet members, twenty-nine Senators, three Speakers and fifty-five members of the House of Representatives, eighteen Foreign Ministers, one Lieutenant General, twenty-one Governors of Virginia, twenty-two judges of the Virginia Supreme Court of Appeals, besides many others dis-

tinguished in civil and military life, in letters, science, education, and the church.

On the fifth of December, 1776, a group of William and Mary students founded the Phi Beta Kappa Society, the first Greek letter fraternity in America, now recognized and honored throughout the world. Three years later there was instituted at the College the Honor System, that important, revered, and enduring contribution to Southern academic life. Always a liberal arts college, William and Mary, however, refused to be slavishly traditional. The sharpest break with academic tradition came in 1779 when Thomas Jefferson, then Governor of Virginia, also was a member of the Board of Visitors of the College. As the result of his influence the Grammar School and the professorships of Divinity and Oriental Languages were abolished and in their places were substituted a professorship of Law and Police (the latter word meaning Government), one of Anatomy, Medicine, and Chemistry, and one of Modern Languages. In 1781, during the memorable Yorktown campaign, the academic life of the College was interrupted temporarily and the buildings were occupied in turn by the army of Cornwallis and by the American and French allies. The President's House, built in 1732 and occupied by every president of the College, accidentally was partly burned by the French troops. It was restored by Louis XVI, who also presented a number of books to the College Library. Only two have survived.

The close of the Revolution found William and Mary impoverished by the loss of royal grants and revenues. Under the able administration of Bishop James Madison, cousin to President James Madison, the College recovered rapidly and during the presidency of Thomas Roderick Dew (1836-46) reached its peak enrollment until comparatively recent times. In 1855 Benjamin Stoddert Ewell became president.

With the advent of war in 1861, the College closed, the President, faculty, and student body entered the Confederate service. Again the academic halls echoed to the tramp of soldiers, the College buildings being occupied successively by both the Union and Confederate armies. In 1862 the Sir Christopher Wren

Building was burned by Union troops acting without orders. With the return of peace in 1865 the College was reopened by President Ewell who, as Colonel C.S.A., had served as Adjutant General to General Joseph E. Johnston. With resources gone, students and faculty scattered, the main building with the library burned, the College was a monument to the desolation of war. Heroically, Ewell fought an apparently losing fight, and, although its buildings were rehabilitated and over 40 students were in attendance one session, the College was forced to suspend operations in 1881 for lack of revenue. Each year for seven years when the time for the opening of the session arrived, Ewell rang the College bell, keeping the charter alive and giving notice to the world that William and Mary was open, even though only a handful of volunteer students remained for gratuitous instruction.

In 1888 with state aid the College reopened under the presidency of Lyon G. Tyler, son of President John Tyler. In 1906 it became a state institution and in 1918 became co-educational. Julian Alvin Carroll Chandler, an alumnus, succeeded Tyler in 1919. Starting with comparatively few buildings, none in too excellent repair, with a faculty of approximately 20, and a student body of about 130, Chandler, during his amazing administration of fifteen years, rebuilt the College to its present size of approximately 1,300 students and 100 faculty, with old buildings restored and new buildings erected. He died in 1934 sacrificing his health and life for William and Mary. The administration of John Stewart Bryan, who followed, has been marked by a continued physical improvement of the College, with a cultural rebirth, and an academic advancement not unlike that which took place in 1779. Through three fires, two wars, and economic chaos, William and Mary has survived and today in the unique setting of Williamsburg, with the cultural heritage of the past, and an academic vision for the future, it serves Virginia and the nation as it originally served Virginia and the Crown.

Priorities of William and Mary



The *first* American college to receive a charter from the crown; this was dated 1693, under seal of the Privy Council.

The *first* and *only* American college to be granted a coat of arms from the Herald's College, 1694.

The *first* American college to have a full faculty of president, six professors, writing master, and usher.

The *first* medals awarded in America as collegiate prizes were those donated by Lord Botetourt, 1771.

The *first* Greek letter fraternity was founded at William and Mary on December 5, 1776. This fraternity, the Phi Beta Kappa, is the great honor society of the foremost institutions of learning in America.

The *first* honor system.

The *first* elective system of studies, 1779.

The *first* schools of Modern Languages and of Law were established in 1779, under the influence of Jefferson.

The *first* college to teach Political Economy was William and Mary in 1784.

The *first* school of History was founded here in 1803.

The Honor System at the College of William and Mary



AMONG her many priorities, William and Mary justly claims that of leading the way in the formulation and adoption of the Honor System. It was inaugurated here in 1779. Early in college days when no other idea of college government prevailed throughout America than that the student should be watched like a suspected criminal for offenses, either actual or potential, the faculty of William and Mary appointed a committee, whose head was the distinguished jurist, Beverly Tucker, to draw up a statement of the spirit and content of an honor system by which the conduct of the students of the old college was to be guided. At once put into operation, this system has been in continuous existence since its establishment.

But glorious and inspiring as is the historical origin of the Honor System, it is with its operation now and in the future that the men and women of the new day at the old college are primarily concerned. In the first place, it is of vital importance that every new student enrolling in September, should clearly understand what the Honor System really is and what it means in his life and in the corporate life of the College. Ignorance of it may bring the possibility—even the probability of breaking it, and at once there follows a well nigh irreparable injury to the character, the reputation, and the future of the individual student and an equally grave lowering of the morale of the student body, for this must always suffer by the disgrace of any of its members. It is in this spirit that the present serious attempt is made to set forth, especially for the benefit of the students, just what the Honor System is and what is required of each in order to translate it into his life.

The Honor System may be defined in a word as individual responsibility. It brings home to the individual man or woman who would stay at the college and share in the advantages she offers, his personal responsibility for her fair name and honor. It emphasizes two things: first, that the student must recognize that he is

answerable in the very fullest degree for every one of his actions and dealings with the members of the faculty and with his fellows, in his or their rooms, in the dining halls, the athletic fields, the social centers, and the class rooms; and, second, that he must recognize his personal responsibility for the well-being of the college in every phase of life in which he touches her existence.

Such phases, in the large, will at once suggest themselves to every one. They include, primarily, everything which touches the securing of aid, assistance, or profit in scholastic work of whatsoever kind, whether in term class work, periodical tests, or in the work handed in to the instructor.

Stealing, defrauding, and lying, are breaches of honor upon which a student may be placed on trial by his fellow students, to determine whether or not he is fit to continue as a member of the College.

As applied to scholastic work the following interpretations of the Honor System are set forth by the Student Honor Councils:

- I. All scholastic work, whether it be in the lecture room, the library, the student's room, or elsewhere, is under the Honor System. All cheating, whether in work pledged or unpledged, whether in tests, assignments, or examinations is a violation of the Honor System. Giving aid to any student or receiving aid from any student, without the consent of the professor, in tests, assignments, or examinations, is cheating.
- II. All written tests and examinations given in the classroom will require a formal pledge. The pledge is required not for the purpose of creating the obligation but to remind the student of the obligation already existing under the Honor System.
- III. For any forms of scholastic work other than written examinations and tests in which the professor desires the use of a pledge, the professor or instructor will prescribe the form of pledge to be used and will make clear the scope of the pledge and responsibility of the individual under the pledge.

The Honor System is supported and handled by the students themselves and they are wholly responsible for

it. Violations of the Honor Code are reported, not to the Faculty, but to the Student Honor Councils. It is the duty of every student to report another student seen in a dishonorable act. Loyalty to the student body demands it. If a student fails to report another student because he is a close associate the Honor System is defunct. Reporting cases is not spying or tale-bearing, for the Honor Councils are representatives of students themselves.

Discipline



THE discipline of the College is vested in the President by action of the Board of Visitors. Cases involving minor infractions of discipline are handled by the Dean of Men and the Dean of Women—respectively. The President may in cases which are referred to him seek the advice of a discipline committee, which represents both the faculty and the administration.

The Honor System as established at William and Mary assumes that every student is trustworthy and will not do a dishonest or dishonorable act or violate his pledged word. In compliance with this established practice each student is required to sign the following pledge on written work: "I hereby declare upon my word of honor that I have neither given nor received help on this test (examination or assignment)." The young men and the young women, through their student councils, immediately take cognizance of any violation of the Honor System, and any student found guilty of violating the accepted code is regarded as unfit to remain as a member of the college community.

The respective student councils also take cognizance of any matters which, in their judgment, are injurious to the well-being of the College. So understandingly is the Honor System enforced by the students that there is rarely any appeal from their decision.

When non-resident students are permitted to withdraw, or are dropped from the roll, or are suspended, they must forthwith leave Williamsburg and the vicinity. Until this requirement has been fulfilled, they remain subject to the authority of the institution and may be expelled.

Hazing or the subjection of a student to any form of humiliating treatment is forbidden. The fundamental test for disciplinary action by the college authorities is whether the behavior complained of tends to throw discredit on the name of the College of William and Mary, or to manifest ungentlemanly conduct on the part of the students. The College believes

it essential to draw a clear line between use and misuse of intoxicating liquors. Therefore, the College regards any evidence of the misuse of alcohol as a serious breach of accepted standards of deportment, and such abuse may be punished by loss of social privileges, probation or separation.

By regulation of the Board of Visitors, students are not allowed to have automobiles, except by special permission which is to be secured from the President.

Registration as a student at the College of William and Mary implies that the student will familiarize himself with the rules and regulations governing the conduct of students, and that he will abide by such regulations so long as he remains a student at the College.

Rules and Regulations for Freshmen



I. Duc Caps.

- A. All freshmen must wear duc caps when on the campus or in Williamsburg and vicinity:
 1. From 7 A. M. to 10 P. M. on weekdays.
 2. From 7 A. M. to 6 P. M. on Saturdays.
 3. No caps worn on Sundays.
 4. Freshmen men are required to wear black bow ties on Saturday nights and Sundays, and freshmen women are required to wear ribbons on Saturday nights and Sundays.

II. Campus Walks.

- A. Freshmen will use only the middle campus walk when going to and from town.
- B. When passing the statue of Lord Botetourt, Freshmen men are required to tip their hats, the women to curtsy.

III. Attendance at College Functions.

- A. Freshmen are expected to attend all convocations, student body meetings, tribunal meetings, Freshman class meetings and pep rallies.
 1. In cases of necessity, permission to be absent from any of the above meetings may be obtained from any member of the Tribunal.
- B. Freshmen are expected to attend all major home athletic contests and will:
 1. Occupy a cheering section designated for them.
 2. Use their megaphones at all games.
 3. Learn all college cheers and songs before the first home football game.

IV. Courtesy and General Conduct.

- A. In accordance with William and Mary's long record of friendliness, it is expected that Fresh-

men will show due respect and courtesy to their classmates, to other students, to the faculty, and to visitors to the College.

- V. All Freshman rules will continue until Christmas vacation, but, if William and Mary beats Richmond in football, the rules will be suspended at once.

Any violation of the above rules is subject to the action of the Tribunal.

Songs and Cheers**ALMA MATER**

Hark, the students' voices swelling,
Strong and true and clear,
Alma Mater's love are telling
Ringing far and near.

CHORUS

William and Mary, loved of old,
Hark, upon the gale
Hear the thunder of our chorus,
Alma Mater—hail!

All thy sons are faithful to thee
Through their college days,
Singing loud from hearts that love thee
Alma Mater's praise.

Iron shod or golden sandaled
Shall the years go by;
Still our hearts shall weave about thee
Love that cannot die.

God, our Father, hear our voices,
Listen to our cry,
Bless the college of our fathers,
Let her never die!

J. S. WILSON, '02.

WILLIAM AND MARY HYMN

Beneath thy trees, within thy halls,
We come, dear school, with praise for thee,
To pledge ourselves, whate'er befalls—
To pledge unfailing loyalty.
Our hearts are with thee, dear William and Mary,
However far we stray.
Our noble college, hear us now—
Thy children sing to thee today!

Dear school, thou'rt old in years and fame,
And richly old in honors, too.
Time shall not dull the shining name
Whose gleam our songs will e'er renew.
And as years go by, dear William and Mary,
Thy fame will never cease,
But each new year rejoice to see
Thy children's praise to thee increase.

We honor thee, not for our gain
But to make known thy majesty,
Thy truth and courage that remain
However harsh the fates may be.
As through troublous years, dear William and Mary,
Our country fought, so thou hast fought and won,
And lived to hear thy children singing to thee now.

O thou, our guardian and our guide,
Renew our courage every hour,
And keep thy spirit by our side
To aid us with its watchful power.
Throughout all our lives, dear William and Mary,
We pledge our loyalty.
Dear college, now and evermore thy children cry
"All Hail to Thee!"

JEANNE ROSE, '33.

G. M. SMALL.

The song below was the prize-winning selection in a contest sponsored during the spring of 1941 by the General Cooperative Committee. The Committee hopes that this song will be used interchangeably with "Alma Mater," and, if it proves popular, that it will be adopted as the official Alma Mater.

Alma Mater, William and Mary,
Hear while we sound thy praise as of old.
Ancient College, William and Mary,
Thy love sustains and will e'er enfold.

CHORUS:

Through ages past did thy children hail thee
And through their deeds have honored thy name,
So in the future thy banners raise thee
Till all the nations shall tell of thy fame.

Alma Mater, William and Mary,
Freely we offer our loyalty
Ancient College, William and Mary,
Naught will excell our love for thee.

Music: MILDRED LYONS, '44.

JOHN HENRY PRINZIVALLI, '41.

Words: MARGARET ANN FRENCH, '41.

FIGHT, FIGHT, FIGHT FOR THE INDIANS

Oh, we will fight, fight, fight for the Indians,
When the Indian Team appears;
We will pull like Hell for the Indians
When they hear our mighty cheers.

Wah-Hoo-Wah!

We will circle the ends for the Indians,
And we'll romp right down the field—
Touchdown! Touchdown! Indians!
And _____ line will surely yield.

INDIANS

(Tune, "Ham and Eggs")

Indians, Indians
 Watch us start out with a win
 Richmond takes it on the chin
 Indians, Indians
 Scalp 'em, swamp 'em
 Bring home wampum
 Indians.

INDIAN WARRIOR SONG

Wa-Hoo

(Chorus)

Sing a song to our fighting men,
 A song of victory.
 Sing along while they win again
 For William and Mary.
 The brave of the bravest, fleet and strong,
 They're going to win, it won't take long, so
 Sing a song and our praise renew
 To our fighting men and Wa-Hoo

SPELL IT

(Easy) W-i-l-l-i-a-m-M-a-r-y
 (Louder) W-i-l-l-i-a-m-M-a-r-y
 (Loudest) W-i-l-l-i-a-m-M-a-r-y
 Fight—————Team—————Fight

PEP

Yeah Team
 Yeah Team
 Fight——Fight——Fight

FIFTEEN

Rah, Rah, Rah-Rah-Rah
 Rah, Rah, Rah-Rah-Rah
 Rah, Rah, Rah-Rah-Rah
 Team—Team—TEAM!

WILLIAM-----MARY

(Slow) William----Mary
 (Faster) William--Mary
 (Fast) William_Mary
 GO TEAM GO!

INDIANS

Indians ----- Rah-Rah-Rah-Rah ----- Indians

SKYROCKET

(Long whistle)-----Boom-----Rah-----Team!

TEAM YELL

T-e-a-m, Yea-a-a Team
 T-e-a-m, Yea-a-a Team
 T-e-a-m, Yea-a-a Team

YEAH TEAM

Yeah ----- Team
 (long)

Yeah ----- Team
 (long)

Fight — Fight — Fight!

INDIAN YELL

With an I
 With an N
 With an I-N-D-I-A-N-S
 Yeah ————— Indians

THE OLD FIGHT

The old fight ————— the old fight
 The William and Mary fight
 The old fight ————— the old fight
 The William and Mary fight
 Yeah ————— Team
 Fight—Fight—Fight

INDIVIDUAL

Ray ————— Rah —————.

LOCOMOTIVE

(Slow) Rah—Rah—Rah—Rah
 Wil—liam—Ma—ry
 (Fast) Rah—Rah—Rah—Rah
 Wil—liam—Ma—ry
 (Faster) Rah-Rah-Rah-Rah
 William-Mary
 (Fast) Team—Team—TEAM.

Miscellaneous**CONVOCATION**

Convocations of the entire student body are held at frequent intervals in the Phi Beta Kappa Auditorium at times announced in advance by the President.

INFIRMARY

The following schedule has been established for students desiring to receive infirmary treatment:

Office Hours—Nurses

7:30 A.M.	-----	10:00 A.M.
12:30 P.M.	-----	2:30 P.M.
6:30 P.M.	-----	8:00 P.M.

Office Hours—Dr. Bell

9:00 A.M.	-----	10:00 A.M.
7:00 P.M.	-----	8:00 P.M.

Except in cases of emergency, all students desiring to answer sick call, are requested to call at the Infirmary during the regularly established office hours.

Visiting Hours for Patients

9:00 A.M.	-----	10:00 A.M.
12:30 P.M.	-----	2:00 P.M.
6:30 P.M.	-----	8:00 P.M.

No exception to the above schedule of visiting hours will be permitted except with the special permission of the nurses. This permission will be granted in the case of parents, relatives, and other out-of-town visitors.

TEXT BOOKS

Text books, both new and used, may be secured at the College Shop.

MAIL

Mail is delivered in three dormitories, Monroe and Old Dominion for men, in Brown Hall for women, and in all

fraternity and sorority houses. Students not residing in these buildings may either rent post office boxes or receive their mail at the General Delivery window. Mail addressed to those buildings having delivery service should be marked with the name of the dormitory. Lock boxes may be rented in advance by mail at seventy-five cents per quarter.

Schedule of Arrivals and Departures of Mails

<i>Departure</i>	
East	West
9:30 A.M.	10:00 A.M.
2:20 P.M.	3:20 P.M.
7:30 P.M.	8:00 P.M.
<i>Arrival</i>	
East	West
10:27 A.M.	3:00 A.M.
3:53 P.M.	9:55 A.M.
8:30 P.M.	2:53 P.M.
	7:50 P.M.

LAUNDRY

The College Laundry handles all of the students' laundry. The method that will be used for collecting and distributing the laundry will be announced upon registration.

HORSEBACK RIDING

The College maintains a stable on Jamestown Road where students can secure horses for riding. All riding is done under the supervision of Mr. H. M. Keyser, riding master. Instruction is given beginners. Women planning to ride must present written permission from home.

Rates

Physical Education classes, Mondays and Wednesdays or Tuesdays and Thursdays. (One hour and fifteen minutes each day), \$22.00 for nine weeks.

Book of tickets, 7 rides	\$10.00
Single rides	\$1.50 per hour
Horses stabled	\$35.00 per month

OLD DOMINION CANTEEN

The College operates a canteen in the recreation room of Old Dominion Hall where students may purchase candy, sandwiches, soft drinks, cigarettes, athletic equipment, men's physical education uniforms, et cetera. Profits from sales are added to the scholarship fund.

LOST AND FOUND OFFICE

The Lost and Found Office is located in the Office of the Registrar, 116 Marshall-Wythe Hall. Students are requested to turn in all articles found to this office where they may be identified and recovered by their owners.

SPEAKING CUSTOM

It is a William and Mary custom to greet students, faculty members, and visitors when passing them on campus. Freshmen are urged to co-operate in the continuance of this friendly custom.

CUTTING CAMPUS

The William and Mary Varsity Club has as one of its objectives the elimination of campus cutting. All students are requested to use campus walks and thus assist in preserving the beauty of the campus.

MATOAKA PARK, BOAT HOUSE, PLAYERS' DELL

The campus of the College of William and Mary extends westward into Matoaka Park, a wooded area of approximately 1,200 acres, lying between the Jamestown and the Richmond Roads. In the midst of this park is Lake Matoaka extending from Jamestown Road northward into five branches, which cover a large area of the park.

A boathouse and canoes have been provided on the lake for the use of students. Students are permitted to use canoes in the fall and spring under the supervision of the Director of Intra-Mural Athletics after having passed a canoe test.

The eastern portion of the park, which joins the campus, is well interspersed with foot-trails and bridle-paths. The natural features of this area have been preserved. Native flora and wild life are abundant.

In the center of this park is Players' Dell, in which have been provided a stage with natural setting and adequate seating facilities to accommodate large audiences. It affords an excellent opportunity for outdoor concerts, plays, masques, and pageants. Players' Dell is well suited to develop and enrich the aesthetic appreciation of the students.

THE LIBRARY

The Library of the College contains about 200,000 volumes. It receives regularly 1,100 periodicals. Members of the faculty and students are allowed to go freely to the stack room and consult books. It is open every day from 7:45 a. m. until 11:00 p. m., except from 6:00 p. m. to 7:00 p. m. On Sundays, it is open from 2:00 p. m. until 11:00 p. m., except from 6:00 p. m. to 7:00 p. m.

The principles of the Honor System are to be observed in the Library. The stealing of books from the Library is considered an offence similar to the theft of other property on the campus. Lying or any form of deceit in regard to the use of the reserved books or to the borrowing of books is considered an infraction of the Honor System and will be reported to the Honor Councils.

In order that the Library may serve the College properly, there are certain rules which must be enforced. Among the most important of the rules are:

1. There is a well established principle of good conduct and courtesy, that no one should appear conspicuous in a public place. This principle should be observed in the College Library. A student in the Library rooms, therefore, should forbear unnecessary and loud talking, in order that he may not attract attention and disturb others.
2. All books borrowed from the Library must be charged at the circulation desk.
3. A book may be kept out for two weeks, subject to a fine of two cents per day for every day over

that time, if the book has not been renewed. If necessary, a book may be recalled by the librarian at any time.

4. Books which are on reserve may be borrowed from the Library at 9:30 p. m., to be returned by 9:15 a. m. the next morning. A fine of twenty-five cents for each book will be charged if it is not returned on time and an additional charge of five cents per hour until it is returned.
5. Books in the reference department must not be taken out of the building at any time.
6. Current numbers of periodicals may be borrowed from the Library between 9 p. m. and 10 p. m. to be returned by 9:15 a. m. the following morning. A fine of 50c will be charged on each periodical which is returned after 9:15 a. m. and 10c per hour for each additional hour until it is returned to the periodical desk. Not more than 3 periodicals or 3 issues of a single periodical may be borrowed by one person over night.

INTER-COLLEGIATE DEBATE

Inter-collegiate debate activities are sponsored by the Men's and Women's Debate Councils. Several Varsity trips are made each year, including a freshman trip. Campus debates are held throughout the year. Varsity teams met debaters from forty colleges and universities during the 1940-41 season. At the final debate of the year between members of the two councils, a silver cup is awarded the best individual debater. A cup is also presented at the end of the year to the most outstanding woman debater of the year by Dean Landrum.

New members are selected after try-outs, held in the fall of each year. Officers of the councils for 1941-42 are:

Men's Debate Council

<i>President</i>	DEWITT RICHARD SEARLES
<i>Vice-President</i>	AUGUSTUS M. WINDER
<i>Secretary</i>	RAOUL J. SALAMANCA
<i>Publicity Manager</i>	JACK W. HOLLOWELL
<i>Manager</i>	GUY E. HORSLEY, JR.

Women's Debate Council

<i>President</i>	JEAN LOUISE REINDOLLAR
<i>Vice-President</i>	EDITH G. RATHBUN
<i>Manager</i>	DORIS FRANCES MILLER
<i>Assistant Managers</i>	{ SARA JANE SNYDER
	{ ELIZABETH G. SEAY

FINE ARTS EVENTS PROGRAM

The Department of Fine Arts produces during the college year four plays. During the season of 1941-42 these will be given on the nights of October 30 and 31, December 11 and 12, March 5 and 6, and April 23 and 24. The second play of the season, Moliere's, *The School for Husbands*, combines brilliant comedy with music and dancing, and will enlist the services of the music division and of *Orchesis*, the popular dance group of the college. Season tickets to the four events are sold in book form at \$2.50 for reserve seats and \$1.75 for general admission. The books are on sale at the Information Desk in Marshall-Wythe Hall.

The Department also brings to the College each year a series of exhibits of architecture, painting, sculpture, and theatre and industrial arts. These are open to the public and are shown in the foyer of Phi Beta Kappa Hall. The final exhibition each year is devoted to the work of the students in the drawing, painting, sculpture, architecture, and theatre classes.

MUSICAL ORGANIZATIONS

The Music Division of the Department of Fine Arts offers to students many opportunities to sing or play in choral or instrumental organizations.

The College Choir, open to men and women students, sings at the weekly chapel services and at many functions, such as convocations, throughout the year. The Men's Glee Club and Women's Glee Club offer additional opportunities for active participation in choral music.

The William and Mary Symphonic Band is open to all students who play wind instruments. It goes on

a three-day concert tour in the early spring. The marching band of men students plays for football games and pep rallies. A Dance Band supplies music for the College dances.

The Concert Orchestra includes both string and wind instruments, and presents programs of music during the course of the year, frequently in conjunction with the choral organizations or other activities.

TRAIN SCHEDULES

West Bound

Lv. Norfolk.....	C. & O.....	9:00 A.M.	2:20 P.M.	7:00 P.M.
Lv. Newport News.....	C. & O.....	9:57 A.M.	3:17 P.M.	7:57 P.M.
Lv. Williamsburg.....	C. & O.....	10:27 A.M.	3:50 P.M.	8:30 P.M.
Ar. Richmond.....	C. & O.....	11:25 A.M.*	4:50 P.M.*	9:30 P.M.*
Lv. Richmond.....	R. F. & P.....	12:10 P.M.†	5:22 P.M.*	10:20 P.M.†
Ar. Washington.....	R. F. & P.....	2:40 P.M.	8:45 P.M.	1:10 A.M.

East Bound

Lv. Washington.....	R. F. & P.....	5:35 A.M.	11:15 A.M.	3:00 P.M.
Ar. Richmond.....	R. F. & P.....	8:00 A.M.†	1:40 P.M.†(see note)	5:45 P.M.*
Lv. Richmond.....	C. & O.....	9:00 A.M.*	2:00 P.M.*	7:00 P.M.*
Lv. Williamsburg.....	C. & O.....	9:55 A.M.	2:53 P.M.	7:55 P.M.
Ar. Newport News.....	C. & O.....	10:32 A.M.	3:30 P.M.	8:32 P.M.
Ar. Norfolk.....	C. & O.....	11:30 A.M.	4:30 P.M.	9:30 P.M.

NOTE: Lv. Wash. 9:05 A.M., Ar. Rich. 11:50 A.M.* would insure connection.

*Main Street Station, Richmond.

†Broad Street Station, Richmond.

BUS SCHEDULES

West Bound

Lv. Newport News.....	8:30 A.M.	10:30 A.M.	2:30 P.M.	6:15 P.M.	8:30 P.M.	12:55 A.M.
Lv. Williamsburg.....	9:22 A.M.	11:22 A.M.	3:22 P.M.	7:07 P.M.	9:22 P.M.	1:43 A.M.
Ar. Richmond.....	10:45 A.M.	12:45 P.M.	4:45 P.M.	8:30 P.M.	10:45 P.M.	3:00 A.M.

East Bound

Lv. Richmond.....	1:15 A.M.	10:30 P.M.*	7:15 P.M.	3:15 P.M.	1:15 P.M.	10:15 A.M.	7:15 A.M.
Lv. Williamsburg..	2:40 A.M.	11:47 P.M.	8:40 P.M.	4:40 P.M.	2:40 P.M.	11:40 A.M.	8:40 A.M.
Ar. Newport News..	3:25 A.M.	12:35 A.M.	9:25 P.M.	5:25 P.M.	3:25 P.M.	12:25 P.M.	9:25 A.M.

*Sundays only.

William and Mary Student Government Constitution



Preamble

We, the students of the College of William and Mary in Virginia, believing that there are common problems that can best be resolved, and common purposes that can be achieved through united effort; and believing that the traditions of student government at William and Mary should be preserved as a sure means of contributing to character and leadership; and desiring to assume responsibility in the management of our affairs, do hereby establish this constitution.

Article I—Name

The name of this association shall be the Student Body of the College of William and Mary in Virginia.

Article II—Membership

The membership of this association shall consist of all regularly enrolled students of the College of William and Mary in Virginia.

Article III—Powers

The powers of the Student Body as herein provided for under this constitution shall extend to all student activities common to both men and women students.

Article IV—The President

There shall be a President of this association, who shall be elected by direct vote of the entire Student Body, and who shall always be a Senior man.

Article V—The Assembly

Section 1. The Assembly shall be composed of thirty-four members, as follows: Three men and three women, elected from each of the four classes, each

member of this association voting for six candidates from his class; and the ten members of the Senate provided for in Article VI.

The President of the Student Body shall be the Speaker of the Assembly.

Section 2. The legislative and the administrative powers of this association shall be vested in the Assembly.

Section 3. The powers and the duties of the Assembly shall be such as are provided for in by-laws passed by the Assembly, and approved by the General Cooperative Committee and as constituted in Article VII, Section one, and by the President of the College.

Section 4. The Assembly shall, subject to such limitations as may be otherwise contained in this constitution, determine its own rules of procedure; fix its own time and place for meetings; establish regulations governing all student body elections herein and hereinafter provided for, including the election of its own membership. It shall have also the power to adopt such rules and regulations for the conduct of its own meetings and for the performance of its duties as the Legislative and the Administrative authority for this association as are not otherwise inconsistent with the provisions of this constitution.

Article VI—The Senate

Section 1. The Senate shall be composed of ten members as follows: the President of the four classes, the President of the Student Body, the President and the Vice-President of the Men's Honor Council, the President of the Women's Student Cooperative Government Association, the Chairman of the Women's Honor Committee, and the Chairman of the Women's Judicial Committee.

Section 2. The Senate shall be a permanent standing committee of the Assembly, to which all by-laws shall be referred, and it shall represent the Assembly on the General Cooperative Committee.

Article VII—The General Cooperative Committee

Section 1. The General Cooperative Committee shall be composed of twenty-two members as follows: the President of the College; four administrative Officials; four Faculty members; the Executive Secretary of the Alumni Association; the Senate; the President of the Inter-Fraternity Council, and the President of the Pan-Hellenic Council.

Section 2. The General Cooperative Committee shall meet at least once a month, during the regular college session.

Article VIII—Elections

Section 1. The Class Officers shall be elected by the direct vote of their respective classes.

Section 2. All members of the Senate with the exception of the officers of the Freshmen Class shall be elected at least two weeks prior to the date set by the Assembly for the election of its new members. No member of the Senate shall be eligible for election to this Assembly for the same term.

Article IX—Amendments

Amendments may be made to this constitution by a two-thirds vote of the total membership of the Assembly after a resolution for amendment has been tabled for one regular meeting.

Article X—Ratification

This constitution shall go into effect immediately upon its being ratified by a majority of the total of the student body and upon its formal approval by the President of the College.

Article XI—Initial Elections

The first elections of members to the Senate and Assembly shall be under the supervision of the present student government.

Student Assembly By-Laws



Article I—Organization

Section 1. A regular meeting of the Student Assembly shall be held the first Tuesday of each month of the academic year.

Section 2. A quorum shall consist of two-thirds of the total membership.

Section 3. Special meetings shall be called by the President upon notification by the Secretary.

Article II—Inauguration of Officers

Section 1. The following pledge shall be taken by members at the first meeting after election: "I do solemnly swear to uphold the Constitution of the Student Body of the College of William and Mary, to discharge faithfully the duties incumbent upon my office."

Section 2. Members of the new Student Assembly shall be installed after their election in the spring before a general meeting of the Student Body called by the President.

Article III—Rules of Order

Section 1. The President of the Senior Class shall be President ex-officio in case of the absence of the President.

Section 2. At the first meeting of the newly elected Assembly, the Secretary shall be elected.

Section 3. The President shall present the order of business:

- (a) The Secretary shall call the roll and read the minutes of the previous meetings.
- (b) The President shall call for committee reports.
- (c) The President shall call for old business.
- (d) The President shall call for new business.
- (e) The President shall ask for voluntary remarks.
- (f) The President shall call for a motion of adjournment.

(g) Unless otherwise provided for in these by-laws, the power of appointing committees shall rest in the hands of the President of the Assembly.

Section 4. Robert's Rules of Parliamentary Procedure shall be followed, except when in conflict with these By-Laws.

Section 5. Voting shall be by show of hands unless a majority calls for a secret ballot.

Section 6. The meeting shall be open, but it may be closed by an accepted motion.

Article IV

Section 1. Every officer on leaving his office shall give to his successors all papers, documents, books and money belonging to the society which shall be a part of a permanent record.

Section 2. All records shall be open to the Student Body.

Article V

Section 1. The Student Assembly shall have the power to conduct student elections in accordance with the procedure contained in these by-laws.

- I. There shall be instituted a Committee on Elections composed of the presidents of the four classes and two members of the Assembly appointed at large by the President. At least two members of the Committee shall be women students. The duties of this Committee shall be the following:
 1. To call for petitions of nominees for Class and Student Body offices (members of the Assembly, representatives to the Men's Honor Council, Head Cheer Leader).
 2. To determine the eligibility of nominees according to the qualifications set forth in these by-laws.
 3. To set a time for holding every regular Class and Student Body election, provided, however, that such elections must be held during the first two weeks of May, between the hours of 3:00 and 6:00 p. m. in Phi Beta Kappa Hall, and

provided, further, that elections of Freshmen Class officers and representatives to the Student Assembly shall be held during the first two weeks of November.

4. To announce the date of each election at least two weeks before the holding of the election.

II. There shall be instituted a Committee for the Conduct of Elections, consisting of the representatives to the Men's Honor Council and of the members of the Honor Committee of the Women Students' Co-operative Government Association. The duties of this Committee shall be to hold elections by secret ballot, in accordance with the provisions set forth in these by-laws. The Committee shall determine rules and procedure of elections, and shall govern the conduct of elections. The Committee shall count ballots and make known the results of elections. A plurality of votes shall determine election.

III. Students shall make known their candidacy for office by petitioning the Committee on Elections, each petition to bear ten signatures. Petitions for class offices shall be signed by members of the class which the candidate seeks to represent. Petitions shall be presented at the office of the Dean of Men within the time determined by the Committee on Elections.

IV. Qualifications for Office:

1. Freshman Offices:

A candidate for a Freshman Class or Assembly Office must be a student in his first year at the College of William and Mary, a qualified member of the Freshman Class and must have attended no other college or university previous to his enrollment at William and Mary.

2. All Other Offices:

- (1) A candidate must be a bona fide member of the class which he seeks to represent.
- (2) A candidate for any office other than that of President of the Student Body must have maintained during the semester preceding the semester in which the election is held

a quality point average at least as high as the average for the entire Student Body.

- (3) A candidate for the office of President of the Student Body must have maintained during each of the three semesters preceding the semester in which the election is held a quality point average at least as high as the average for the entire Student Body.

V. Vacancies in Class and Student Body offices shall be filled at special elections held in accordance with the provisions set forth for regular elections in these by-laws, except that the time for a special election may be set at the discretion of the Committee on Elections.

VI. Nominations Committee:

There shall be instituted a Committee on Nominations composed of the senior members of the Student Assembly. The duty of this Committee is to nominate candidates when there are less than three (3) qualified candidates nominated for each office by general petition.

Section 2. The Student Assembly shall have the power to make recommendations to the General Cooperative Committee concerning social policies and activities of the Student Body and to ask the Committee to effect such changes as may be deemed reasonable and necessary.

Section 3. The Student Assembly shall have the power to recognize the formation of new clubs and organizations on the campus:

1. New organizations must petition the Student Assembly for recognition.
2. Organizations which have not obtained recognition from the Student Assembly will not be allowed a place on the Social Calendar of the College or representation in the College Yearbook.

Section 4. The Student Assembly shall have the authority to enforce the following "duc" rules by means of a Freshman Tribunal:

1. The Freshman Tribunal is to be composed of the six sophomore members of the Student Assembly, the President of the Sophomore Class, who shall be the Chairman, the President of the Interfraternity Association, and the President of the Pan-Hellenic Council.
2. The "Duc" Rules:
 - (1) Duc Caps
 - a. All freshmen must wear duc caps when on campus or in Williamsburg and vicinity.
 - (a) From 7 a. m. to 10 p. m. on week days.
 - (b) From 7 a. m. to 6 p. m. on Saturdays.
 - (c) No caps worn on Sundays.
 - (d) Freshmen men are required to wear black bow ties on Saturday nights and Sundays, and freshmen women are required to wear ribbons on Saturday nights and Sundays.
 - (2) Campus Walks
 - a. Freshmen will use only the middle campus walk when going to and from town.
 - b. When passing Lord Botetourt, Freshmen men are required to tip their hats, the women to curtsy.
 - (3) Attendance at College Functions
 - a. Freshmen are expected to attend all convocations, Student Body meetings, Tribunal meetings, Freshman Class meetings, and pep rallies.
 - (a) In cases of necessity, permission to be absent from any of the above meetings may be obtained from any member of the Tribunal.
 - b. Freshmen are expected to attend all major home athletic contests and will:
 - (a) Occupy a cheering section designated for them.
 - (b) Use their megaphones at all games.
 - (c) Learn all college cheers and songs before the first home football game.
 - (4) Courtesy and General Conduct.
 - a. In accordance with William and Mary's long record of friendliness, it is expected that Freshmen will show due respect and courtesy

to their classmates, to other students, to the faculty, and to visitors to the College.

- (5) All Freshmen rules will continue until Christmas vacation; but, if William and Mary beats Richmond in football, the rules will be suspended at once. Any violation of the above rules is subject to the action of the Tribunal.

Section 5. The Student Assembly shall have the authority to discuss and act upon all petitions presented to the Assembly by the Student Body.

Section 6. The Student Assembly shall have the right to discuss anything related to the general welfare of the College and to make recommendations thereon to the General Cooperative Committee.

Article VI

Section 1. There shall be a Publications Committee consisting of the following persons:

- (1) A Chairman, elected by the Assembly from among the junior and senior membership of the Assembly.
- (2) The Editor of the *Flat Hat*.
- (3) The Editor of the *Colonial Echo*.
- (4) The Editor of the *Royalist*.
- (5) A member of the Faculty elected by the Assembly.
- (6) A member of the Faculty elected by the Student Activities Committee.

Section 2. The duties and powers of the Publications Committee shall be the following:

- (1) To elect the Editor of the *Flat Hat*, the Editor of the *Colonial Echo*, the Editor of the *Royalist*, the Business Manager of the *Flat Hat*, the Business Manager of the *Colonial Echo*, and the Circulation Manager of the *Flat Hat*.
- (2) To review elections and appointments of other members of the various staffs.
- (3) To serve as a board for hearing and acting on complaints concerning staff organization or staff administration.

- (4) To hold regular meetings, at intervals of not more than four weeks, for the purpose of scrutinizing staff organizations, of assuring itself that the provisions of these By-Laws are observed, and of discussing the general conduct of the publications.
- (5) To dismiss any Editor, Business Manager, or Circulation Manager who fails to fulfill the obligations of his office.

Section 3. The Publications Committee shall have no voice in the editorial policy of any publication.

Section 4. The members of the Publications Committee shall be elected during the first week of May. The term of their membership shall begin on the first of June and shall last for one year.

Section 5.

- (1) The Editor of the *Flat Hat*, the Editor of the *Colonial Echo*, the Editor of the *Royalist*, the Business Manager of the *Flat Hat*, the Business Manager of the *Colonial Echo*, and the Circulation Manager of the *Flat Hat* shall receive salaries to be fixed by the Student Activities Committee.
- (2) In order to be eligible for election to one of the salaried offices listed in the preceding subsection, a candidate must have maintained during the semester preceding the semester in which the election is held a quality point average at least as high as the average for the entire student body.

Section 6. The editorial staff of the *Flat Hat* shall consist of the following persons:

- (1) An Editor elected from among the Junior Editors. The Editor shall be a bona fide member of the Senior Class.
- (2) A Sports Editor, a Make-up Editor, a Staff Editor, and a News Editor. These shall be bona fide members of the Junior Class and shall be elected from among Sophomore members of the staff by the outgoing Editor and Junior Editors. It shall be the duty of the Staff Editor to make assignments and to supervise the gathering of material by the reporters. It shall be the duty of

the News Editor to prepare copy for publication and to evaluate material for its placement in the paper. It shall be the duty of the Make-up Editor to prepare the layout, to write headlines, and to read proof. It shall be the duty of the Sports Editor to make assignments, to prepare copy for publication, to prepare the layout, and to read proof.

- (3) Not fewer than fifteen nor more than twenty Freshmen, and not fewer than eight, nor more than ten Sophomores, who shall be elected to the staff by the Editor and the three Junior Editors. Should the number of members in either the Freshman staff or the Sophomore staff fall below the proposed minimum, the Editor shall call for candidates and shall hold tryouts for the purpose of filling vacancies.
- (4) Feature writers and specialty writers of whatever class rank, to be appointed by the Editor and the Junior Editors.

Section 7. The editorial staff of the *Colonial Echo* shall consist of the following persons:

- (1) An Editor elected from among the Junior Editors. The Editor shall be a bona fide member of the Senior Class.
- (2) An Associate Editor appointed by the Editor, with the specific approval of the Publications Committee, from among the Junior Editors.
- (3) Class Editor, an Athletic Editor, a Fraternities and Organizations Editor, and a Photography Editor. These shall be bona fide members of the Junior Class and shall be elected from among the Sophomore staff members by the outgoing Editor, Associate Editor, and Junior Editors.
- (4) Not fewer than twelve nor more than eighteen Freshmen, and not fewer than eight nor more than twelve Sophomores, who shall be elected by the Editor, the Associate Editor, and the four Junior Editors. Should the number of Freshmen or Sophomore staff members fall below the proposed minimum, the Editor shall call for candidates and shall hold tryouts for the purpose of filling vacancies.

Section 8. The staff of the *Royalist* shall consist of the following persons:

- (1) An Editor elected from among the Junior Editors. The Editor shall be a bona fide member of the Senior Class.
- (2) Associate Editors appointed by the Editor from among the Junior Editors.
- (3) A Fiction Editor, a Poetry Editor, an Articles Editor, an Art Editor, and an Exchange Editor. These shall be bona fide members of the Junior Class and shall be chosen from among the Sophomore staff members by the outgoing Editor and Junior Editors. Each Junior Editor shall be held responsible for soliciting, collecting, editing, and proof-reading of material falling within his department.
- (4) Ten Staff Assistants who are bona fide members of the Sophomore Class and five Staff Assistants who are bona fide members of the Freshman Class, to be chosen by the Editor and Junior Editors on the basis of applications and tryouts. Each Staff Assistant shall be assigned particular routine tasks under the supervision of the Editor and Junior Editors, in order that he may have practice in collecting material, editing it, and reading proof.

Section 9. The duties of the Editors of the three publications shall be to supervise and to administer staff organization. Each Editor shall accept final responsibility for the quality and the form of materials in his publication.

Section 10.

- (1) The business staff of the *Flat Hat* shall consist of not fewer than fifteen and not more than twenty members, to be appointed by the Business Manager.
- (2) The business staff of the *Colonial Echo* shall consist of not fewer than fifteen and not more than thirty members to be appointed by the Business Manager.
- (3) The circulation staff of the *Flat Hat* shall consist of not fewer than four and not more than

eight members, to be appointed by the Circulation Manager.

- (4) Not fewer than twenty per cent and not more than forty per cent of the members of any business or circulation staff shall be from a single College class.

Section 11. Every Editor, every Business Manager, and the Circulation Manager of the *Flat Hat* shall be required to file a report with the Publications Committee not later than the twentieth of April, giving tangible evidence as to the amount and quality of work done by each member of his staff.

Article VII

Every proposed alteration, amendment, or addition to these by-laws and rules of order hereunto annexed, must be handed to the President in writing, who shall publish the same to the Assembly, and at the next regular meeting, it may be adopted by a two-thirds vote of the entire membership, and thereupon referred to the General Cooperative Committee for approval.

Student Government Officers



SENATE

- President of Senior Class*---JOHN THOMAS MOUGEY
President of Junior Class---H. WESCOTT CUNNINGHAM
President of Sophomore Class -----JOHN M. BELLIS, JR.
President of Freshman Class -----(to be elected)
President of Men's Honor Council -----CLAUDE KELSO KELLY
Vice-President of Men's Honor Council -----CHAS. MALCOLM SULLIVAN
President of Student Body---DOUGLAS ROBERT ROBBINS
President of Women Students' Cooperative Government Association-----THEO. S. KELCEY
Chairman of the Women's Honor Committee-----MILDRED ANNE HILL

ASSEMBLY

The Assembly consists of the members of the Senate and the following class representatives:

Seniors

JANE ALDEN	TABB TAYLOR
EDWARD MORRISON COOK	VIRGINIA TRIPP

Juniors

ANNE EMILY ARMITAGE	SIDNEY GRAYSON CLARY
HELEN H. BLACK	ROBERT S. MARSHALL
CHARLES ROBERT BUTLER	LOIS REA

Sophomores

ROBERT B. ELLERT

JEANNE AUDREY MENCKE

JAMES B. HENDRY

MARILYN M. MILLER

MARJORIE E. LENTZ

ROBERT E. WALSH

Freshmen

(To be elected)

*Speaker of the Assembly**(President of the Student**Body) ----- DOUGLAS ROBERT ROBBINS*

Class Officers



1942

<i>President</i>	JOHN THOMAS MOUGEY
<i>Vice-President</i>	PATRICIA NICHOLS
<i>Secretary-Treasurer</i>	MARY MARGARET FIGLEY

1943

<i>President</i>	H. WESCOTT CUNNINGHAM
<i>Vice-President</i>	PAUL DE S. COUCH
<i>Secretary-Treasurer</i>	OWEN LEE BRADFORD

1944

<i>President</i>	JOHN M. BELLIS, JR.
<i>Vice-President</i>	JAMES HENDRY
<i>Secretary-Treasurer</i>	ROBERT E. WALSH

General Cooperative Committee



President ----- JOHN STEWART BRYAN

Administrative Officers

JOHN E. HOCUTT MARGUERITE WYNNE-ROBERTS
J. WILFRED LAMBERT

Faculty Members

WILLIAM G. GUY GRACE WARREN LANDRUM
CHARLES T. HARRISON

*Executive Secretary of the
Alumni Association*----- CHARLES P. MCCURDY, JR.

Student Members

*President of Interfraternity
Council* ----- (To be elected)

*President of the Panhellenic
Council* ----- PHYLLIS A. HILE

Members of the Senate

JOHN M. BELLIS, JR.	CLAUDE KELSO KELLEY
H. WESCOTT CUNNINGHAM	JOHN THOMAS MOUGEY
MILDRED ANNE HILL	DOUGLAS ROBERT ROBBINS
CLAIRE LOUISE HULCHER	CHAS. MALCOLM SULLIVAN
THEODOSIA S. KELCEY	PRESIDENT OF THE FRESH- MAN CLASS

Men's Honor Council

<i>Senior Members</i> -----	{	CLAUDE KELSO KELLEY, President
	{	CHARLES MALCOLM SULLIVAN, Vice-President
	{	ANTHONY MAUCIONE
<i>Junior Members</i> -----	{	ROBERT W. COINER
	{	HARRY D. COX
	{	HENRY VANAMBURGH JOSLIN
<i>Sophomore Member</i> -----		WILLIAM E. ALBERT

Women Students' Cooperative Government
1941-1942



Executive Council

<i>President</i> -----	THEO S. KELCEY
<i>Vice-President</i> -----	ANNE EMILY ARMITAGE
<i>Secretary</i> -----	JACQUELINE FOWLKES
<i>Treasurer</i> -----	HAZEL D. RIGGS
<i>Representatives-at-Large</i> ---	{ MARJORIE DEBORAH DAVIS
	{ VIRGINIA ALICE TRIPP
<i>Freshman Representative-at-Large</i>	(To be elected)

Honor Council

<i>Chairman</i> -----	MILDRED ANNE HILL
<i>Secretary</i> -----	HELEN H. BLACK
<i>Senior Members</i> -----	{ MARY MARGARET FIGLEY
	{ NATALIE NICHOLS
<i>Junior Members</i> -----	{ JANE TAYLOR
	{ BETTY JEAN BUNTIN
<i>Sophomore Member</i> -----	KATHARINE M. LEE

Judicial Committee

<i>Chairman</i> -----	CLAIRE LOUISE HULCHER
<i>Secretary</i> -----	MARY ELOISE SCHICK
<i>Junior Member</i> -----	ELIZABETH PARKS JONES
<i>Sophomore Member</i> -----	SALLY DOUGLAS
<i>Representatives-at-Large</i> -	{ PATRICIA NICHOLS
	{ ETHEL VIRGINIA TEAL
<i>Freshman Member</i> -----	(To be elected)

Dormitory Presidents

<i>Barrett Hall</i> -----	JEAN R. EDWARDS
<i>Brown Annex</i> -----	KATHRYN BROSSARD
<i>Brown Hall</i> -----	LOIS JACQUELINE PHILLIPS
<i>Chandler Hall</i> -----	FLORENCE R. YACHNIN
<i>Jefferson Hall</i> -----	JANICE ELIZABETH HARVEY

Religious Organizations



Y. W. C. A.

Officers

<i>President</i>	CLAIRE LOUISE HULCHER
<i>Vice-President</i>	EVELYN L. COSBY
<i>Secretary</i>	MARGARET LEE ALEXANDER
<i>Treasurer</i>	ELIZABETH G. SEAY
<i>Senior Program Chairman</i>	FRANCES VIRGINIA STERNE
<i>Junior Program Chairman</i>	HELEN S. MARSHALL
<i>Worship Chairman</i>	EMILY JANE SNYDER
<i>Social Chairman</i>	BARBARA JANE GRAY
<i>Public Affairs Chairman</i>	MARY C. HAMNER
<i>Flat Hat and Publicity</i>	
<i>Chairman</i>	JACQUELINE FOWLKES

Purpose of the Y. W. C. A.

The Young Women's Christian Association of the College of William and Mary, a member of the Young Women's Christian Associations of the United States of America and a participant in the World's Student Christian Federation, declares its purpose to be:

"We, the members of the Young Women's Christian Association of the College of William and Mary, unite in the desire to realize full and creative life through a growing knowledge of God.

"We determine to have a part in making this life possible for all people.

"In this task we seek to understand Jesus and follow Him."

Membership in the Y. W. C. A.

Every woman at William and Mary who is interested in the aims of the Y. W. C. A. will be given the opportunity to join in September. By her membership in the Y. W. C. A. a student also becomes a

member of the World's Student Christian Federation, which is composed of representatives from many different countries of the world.

Big Sister Plan

Every year the Y. W. C. A., in co-operation with the Women's Student Government, organizes a group of "Big Sisters," who feel that this endows them with a special kind of friendly ownership and interest in their "Little Sisters" of the freshman class.

It is the special duty of the Big Sister to help her Little Sister become adjusted to college life.

Meetings

Alternate Thursday nights are set for meetings of the Y. W. C. A. Lectures, entertainments, vespers, or discussion groups will be held.

The Y. W. C. A. works in close cooperation with the Red Cross, and similar organizations in the City of Williamsburg. The "Y" acts as the campus representative for these groups.

The Y. W. C. A. Room

The Y. W. C. A. room is on the first floor in Jefferson Hall. It is open at all times for the use of the women students who are especially invited to enjoy it.

WESLEY FOUNDATION

The Wesley Foundation is an organization of students sponsored by the Methodist Church but is open to all those interested. It attempts to minister to the religious life and needs of the College community and to offer the friendly atmosphere of a "home away from home" for all its members.

Officers

President.....RICHARD M. MEARS

Secretary.....HARRY ROSS KENT

Treasurer.....EMALEE I. EWING

Committee Chairmen:

Worship.....HARRIET ELIZABETH MURRAY

Personnel and Publicity...ROBERT W. EASTHAM

Recreation.....ERMA R. POWERS

WESTMINSTER FELLOWSHIP

The Westminster Fellowship is an organization of Presbyterian students of the College, which also serves the religious needs of Reformed, Dutch Reformed, Congregational and some Lutheran students. To fulfill its three-fold purpose of religious growth, expression and social life, it sponsors a Student Bible Class led by a faculty member; a Sunday Evening Supper Club led by the Student Moderator of the Fellowship; and a varied social program led by the Social Committee.

Officers

<i>Student Moderator</i>	HARVEY MARRINER
<i>Student Assistant</i>	(To be appointed)
<i>Faculty Advisor</i>	DR. LIONEL H. LAING

GIBBONS CLUB

The Gibbons Club is an organization of Catholic students of the College. An opportunity is provided for students to discuss matters of a religious nature and of common interest to them.

Officers

<i>President</i>	BRENDAN AUSTIN BURNS, JR.
<i>Vice-President</i>	ROBERT EDWARD GRIFFIN
<i>Secretary</i>	HELEN ELIZABETH JERRY
<i>Treasurer</i>	CRYSTAL G. P. AMMER
<i>Advisors</i>	{ FATHER JAMES WALSH DR. GEORGE J. RYAN

BALFOUR CLUB

The Balfour Club is an organization of Jewish students of the College.

Officers

<i>President</i>	BERNARD ITZKOWITZ
<i>Secretary</i>	ROSANNE SONIA STRUNSKY

Church Directory



BRUTON PARISH CHURCH (Episcopal)

Established 1633

Rev. Francis H. Craighill, Jr., Rector

Rev. G. P. La Barre, Assistant Rector

Grayson Clary, Student Assistant

Maria Lee Goodwin, Parish Secretary

Regular Services: Sunday,

8:00 A. M. Holy Communion

9:30 A. M. Sunday School

11:00 A. M. Morning Service

Other services to be announced.

CHURCH OF SAINT BEDE (Catholic)

Richmond Road at Bright St.

Rev. Thomas J. Walsh, Pastor

Address: College Terrace.

Holy Mass: Sundays

October 1st to June 1st—9:30 A. M. and 11 A. M.

June 1st to October 1st—7:00 A. M. and 9 A. M.

Sunday School during school year at 10:30 A. M.

Evening Devotions on Mondays at 7:15.

Mass is celebrated on Holydays at 7 A. M.

Daily Mass at 7:30 A. M.

WILLIAMSBURG BAPTIST CHURCH

Rev. Carter Helm Jones, D.D., Pastor

Regular Meetings: Sunday,

9:45 A. M. Sunday School

11:00 A. M. Morning Worship

7:00 P. M. B. S. U.

8:00 P. M. Evening Worship

Mid-week Meeting: Wednesday, 8:00 P. M.

WILLIAMSBURG METHODIST CHURCH

(At the College Entrance)

Rev. William L. Murphy, D.D., Minister

Regular Sunday Services:

- 9:45 A. M.-----Church School
11:00 A. M.-----Morning Worship
7:00 P. M.-----Wesley Foundation Service

Members of the faculty and college students are most cordially invited to all of these services. Church office and reading rooms are open daily.

WILLIAMSBURG PRESBYTERIAN CHURCH

Rev. Charles Pratt, Minister

Sunday Services:

- 10:00 A. M.-----Student Bible Class
11:15 A. M.-----Morning Worship
5:45-7:15 P. M.-----Sunday Evening Supper Club

Athletics for Men



ATHLETIC COMMITTEES

Faculty

CHARLES J. DUKE, JR.,	T. J. STUBBS, JR.
<i>Chairman</i>	L. TUCKER JONES,
HAROLD L. FOWLER	<i>Ex-Officio</i>
CHARLES F. MARSH	CARL M. VOYLES, <i>Ex-Officio</i>

Alumni

J. LESTER HOOKER,	ASHTON DOVELL
<i>Chairman</i>	OTTO LOWE
J. D. CARNEAL, JR.	

ATHLETICS STAFF

Administrative Members

<i>Director</i> -----	CARL M. VOYLES
<i>Business Manager</i> }	-----WILLIAM S. GOOCH, JR.
<i>Program Manager</i> }	
<i>Athletic Publicity Director</i> ----	IRA ("SPIKE") MOORE

Coaches

<i>Head Coach of Football</i> -----	CARL M. VOYLES
<i>Assistant Coach of Football</i> ----	R. N. MCCRAY
<i>Coach of Basketball</i> }	-DWIGHT STUESSY
<i>Freshman Coach of Football</i> }	
<i>Assistant Coach of Football</i> }	-A. H. WERNER
<i>Head Coach of Baseball</i> ----	
<i>Assistant Coach of Football</i> ----	ERIC TIPTON
<i>Coach of Track and Cross</i> }	-JOSEPH C. CHANDLER
<i>Country</i>	
<i>Director of Intramurals</i> -----	

<i>Freshman Coach of Basketball</i> -----	}	RICHARD GALLAGHER
<i>Freshman Coach of Baseball</i> -----		
<i>Assistant Coach of Football</i> -----		
<i>Trainer</i> -----		
<i>Coach of Swimming</i> -----		WILLIAM S. GOOCH, JR.
<i>Coach of Fencing</i> -----		L. TUCKER JONES
<i>Coach of Tennis</i> -----		SHARVY UMBECK

Captains

<i>Football</i> -----	WILLIAM GOODLOW
<i>Basketball</i> -----	GLENN KNOX
<i>Track</i> -----	HARLIE MASTERS
<i>Fencing</i> -----	EUGENE GLASSMAN
<i>Swimming</i> -----	{ ROY MERRITT VINCENT WOOLLEY
<i>Baseball</i> -----	{ (To be elected during the school year)
<i>Tennis</i> -----	

Managers

<i>Football</i> -----	MONTIE MEEKS
<i>Basketball</i> -----	MALCOLM SULLIVAN
<i>Baseball</i> -----	RICHARD DAVIS
<i>Track</i> -----	GEORGE BLANFORD
<i>Swimming</i> -----	VICK SWANSON
<i>Fencing</i> -----	WILLIAM GROVER
<i>Tennis</i> -----	(To be elected during the school year)

PHYSICAL EDUCATION

All students are required to take physical education during their freshman and sophomore years.

The physical education program is organized and conducted to give every student skilled instruction in a number of activities. The policy of the Depart-

ment is to allow students the opportunity to select activities. All students must successfully complete a minimum of six activity courses, two each semester, for a total of four semesters. Each activity is of eight weeks' duration. Especial emphasis is placed on golf, swimming, and tennis, and students may take advanced work in these activities. Instruction is provided in the following activity courses: apparatus, badminton, basketball, boxing, dancing, fencing, touch football, golf, handball, individual activities, riding, softball, swimming, tennis, track and field, tumbling, volley ball, and wrestling.

Intramural Sports

Provision is made for participation in the following intramural sports: badminton, horseshoes, touch football, tennis, track and field athletics, boxing, wrestling, and swimming. Because of the body building, social, and character-forming values of competitive sport, every encouragement is made to have students enter into one or more forms of intramural athletics. Schedules are arranged for dormitory, fraternity, and independent competition.

Intercollegiate Athletics

The general supervision of athletics for men has been delegated by the President to an Athletic Committee. Cooperating with the President and Faculty Committee is an Alumni Athletic Council, which, together with the Faculty Committee, constitutes the General Athletic Council.

The College is a member of the Southern Conference, and the Faculty Committee chairman is charged with administration of the Southern Conference rules on eligibility.

A competent staff of coaches, all of whom have academic rank in the College, who are appointed for the full academic year, provide instruction in the following intercollegiate sports: baseball, basketball, cross country, fencing, football, golf, swimming, tennis and track and field athletics.

Intercollegiate athletics are provided freshmen in the following sports: baseball, basketball, football, swimming, and track and field athletics.

FACILITIES

The George Preston Blow Gymnasium was built in 1924. In this gymnasium are two basketball courts, swimming pool, three handball courts, volley ball court, showers, lockers, trophy room and athletic administrative offices and social room.

Cary Field Park, named in honor of T. Archibald Cary, provides the following facilities: tennis courts for men and women, hockey field for women, archery range for women, baseball field for men, stadium for football and track and field athletics, with a seating capacity of 9,000, practice fields for varsity and freshman football, and space for softball and intramural games.

Directory of Buildings



1—**The College**—“Sir Christopher Wren Building.” Basement, north wing, dramatic art. First floor, English. Second floor, English. Third floor, psychology.

2—**The President’s House.** The private residence of the President of the College.

3—**Brafferton Hall.** The guest house and quarters for the Faculty Club.

4—**The Alumni Office.**

5—**Phi Beta Kappa Memorial Hall.**

6—**Washington Hall.** First floor, biology. Second floor, philosophy, mathematics and English. Third floor, home economics, ancient languages and modern languages.

7—**Proposed Building.**

8—**Marshall-Wythe Hall.** First floor, administrative offices. Second floor, economics, history and government. Third floor, sociology and law and the offices of the student publications.

9—**William Barton Rogers Science Hall.** First floor, physics. Second and third floors, chemistry.

10—**Library.**

11—**Monroe Hall.** A dormitory for men.

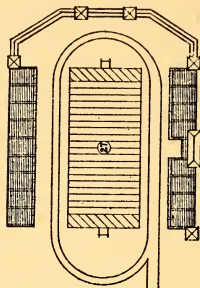
12—**George Preston Blow Gymnasium.**

13—**Old Dominion Hall.** A dormitory for men.

14—**Chandler Hall.** A dormitory for women.

- 15—Kate Waller Barrett Hall. A dormitory for women.
- 16—Jefferson Hall. A dormitory for women.
- 17—Trinkle Hall. The College Refectory.
- 18—Taliaferro Hall. A dormitory for men.
- 19—Old Taliaferro. The Department of Fine Arts.
- 20—Service Plant.
- 21—Warehouse and Laundry.
- 22—David J. King Infirmary.
- 23—Tyler Hall. A dormitory for men.
- 24—Robinson Conservatory.
- 25—Dormitory for College Employees.
- 26—Sorority Court.
- 27—Stadium.
- 28—Sunken Garden.
- 29—Women's Athletic Field.

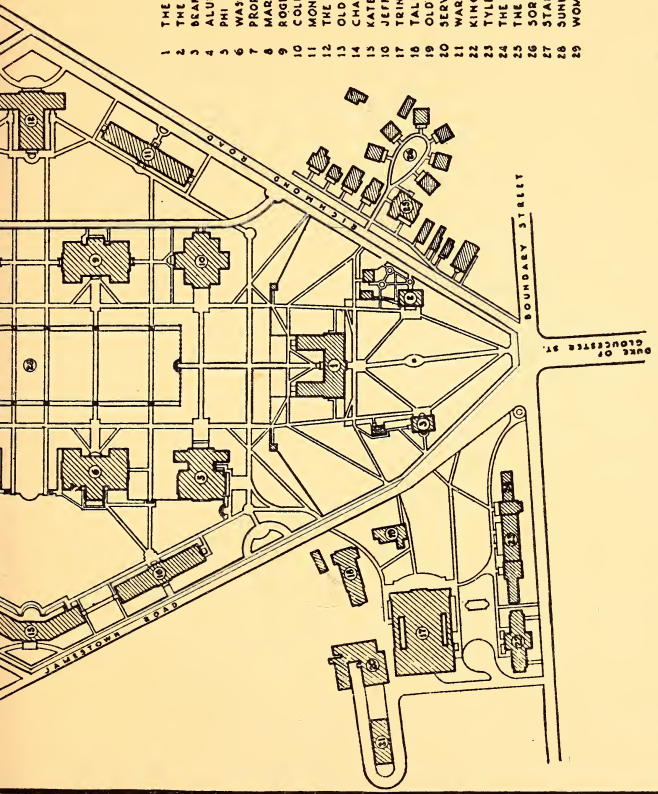
CAMPUS PLAN OF
COLLEGE OF WILLIAM & MARY
WILLIAMSBURG, VIRGINIA



6

KEY

- 1 THE WREN BUILDING
- 2 THE PRESIDENTS HOUSE
- 3 BRAFFERTON HALL
- 4 ALUMNI OFFICE
- 5 PHI BETA KAPPA MEMORIAL HALL
- 6 WASHINGTON HALL
- 7 PROPOSED BUILDING
- 8 MARSHALL WYTHE HALL
- 9 ROGERS SCIENCE HALL
- 10 COLLEGE LIBRARY
- 11 MONROE HALL
- 12 THE GEORGE PRESTON BLOW GYMNASIUM
- 13 OLD DOMINION HALL
- 14 CHANDLER HALL
- 15 KATE WALLER BARRETT HALL
- 16 JEFFERSON HALL
- 17 TRINKLE HALL (DINING HALL)
- 18 TALIAFERRO HALL
- 19 OLD TALIAFERRO HALL
- 20 SERVICE PLANT
- 21 WAREHOUSE & LAUNDRY
- 22 KING INFIRMARY
- 23 TYLER HALL
- 24 THE MIRIAM ROBINSON CONSERVATORY
- 25 THE HOME MANAGEMENT HOUSE
- 26 SORORITY COURT
- 27 STADIUM
- 28 SUNKEN GARDEN
- 29 WOMENS ATHLETIC FIELD



Athletics for Women



WOMEN'S ATHLETIC COUNCIL

Faculty

L. TUCKER JONES MARTHA BARKSDALE
MARGUERITE WYNNE-ROBERTS
JEANNE PARQUETTE

Students

President.....ETHEL VIRGINIA TEAL
Point Recorder.....ANNE ARMITAGE
Secretary.....MARY WILSON CARVER

Women's athletics are conducted at William and Mary with the aim of giving to every student an opportunity to participate. Intramural activities offer to all some form of competition and an opportunity to win recognition for participation and for skill. The awards open to all are the Intramural Emblem, Point Monogram, and Stars.

A limited number of intercollegiate games are scheduled in hockey, basketball, tennis, swimming, lacrosse, and fencing. Successful competitors receive varsity monograms.

Coaches

FencingL. TUCKER JONES
Hockey }
Basketball }.....MARTHA BARKSDALE
Tennis }
Junior Varsity Hockey..... } GRACE FELKER
LaCrosse..... }
Swimming..... }
Freshman Basketball..... } JEANNE PARQUETTE
Director of Intramurals..... }
Student Head of Intramurals... FLORENCE YACHNIN

Managers

<i>Publicity Head</i> -----	MARY RUTH BLACK
<i>Head of Archery</i> -----	BARBARA ANDERSON
<i>Head of Badminton</i> -----	JEAN BURNSIDE
<i>Head of Basketball</i> -----	VIRGINIA LONGINO
<i>Assistants</i> -----	{ VIRGINIA KNERR THELMA WILLIAMS
<i>Head of Bowling</i> -----	AUGUSTA WILLIAMS
<i>Head of Fencing</i> -----	ETHEL TEAL
<i>Assistants</i> -----	{ LUCILLE FIZER JOAN NOURSE
<i>Head of Hockey</i> -----	DORIS MILLER
<i>Assistant</i> -----	LILLIAN ROUSCH
<i>Hostess Manager</i> -----	MARGARET ALEXANDER
<i>Assistants</i> -----	{ ELIZABETH SEAY BETTY JONES VIRGINIA MARKLE MARGARET LUCAS ELIZABETH MYERS MARY LOUISE TAYLOR DORIS ARMOR
<i>Head of LaCrosse</i> -----	JOANNE TIFFANY
<i>Assistant</i> -----	CARYL CROY
<i>Head of Riding</i> -----	DORIS ARMOR
<i>Head of Softball</i> -----	JEAN WILFONG
<i>Head of Swimming</i> -----	CLAIRE BARDWELL
<i>Head of Tennis</i> -----	JANE CHRISTIANSEN

Publications



POSITIONS on the staffs of the several student publications are open to all students with the requisite training and ability. Selections to the staffs are made after tryouts which are held in the fall of each year. Freshmen are eligible to compete in these tryouts.

THE COLONIAL ECHO

Editor-----GERALD ROSE
Associate Editor----EDITH RATHBURN
Business Manager---CHARLES MALCOLM SULLIVAN

The Colonial Echo is the student yearbook of the College. It contains a record of all classes and of all activities of the college year. It is published toward the end of the second semester.

THE FLAT HAT

Editor-----ROBERT S. MARSHALL
Business Manager---CLARENCE FOSTER JENNINGS

The Flat Hat, the College newspaper, is published on Tuesday of each week during both semesters.

THE ROYALIST

Editor-----ROSANNE STRUNSKY

The *Royalist*, a pocket-size magazine designed to appeal to the student body as a whole and to provide a vehicle for the expression of both literary and artistic talents, succeeded *The William and Mary Literary Magazine* in the fall of 1937. The *Royalist* contains such diverse features as short stories, illustrations and cartoons, poetry, snapshots of campus personalities and activities, articles of local and universal interest, and book reviews. It is published four times a year.

THE WILLIAM AND MARY COLLEGE HISTORICAL QUARTERLY

The William and Mary College Historical Quarterly, edited by John Stewart Bryan, President of the College, and E. G. Swem, Librarian, is published by the College. The aim of the editors is to publish new information about the history of Virginia.

College Societies



PHI BETA KAPPA

Alpha of Virginia

Phi Beta Kappa is an honorary scholastic fraternity and was founded at the College of William and Mary, December 5, 1776. It elects to membership senior students of outstanding scholastic attainment and alumni of the College and persons other than graduates who are distinguished in letters, science, education, or a learned profession.

OFFICERS FOR 1941-42

<i>President</i>	JAMES NOAH HILLMAN
<i>Vice-President</i>	GRACE WARREN LANDRUM
<i>Recording Secretary</i>	DONALD W. DAVIS
<i>Corresponding Secretary</i> ...	T. J. STUBBS, JR.
<i>Treasurer</i>	R. G. ROBB
<i>Historian</i>	R. L. MORTON

LEADERSHIP SOCIETIES

OMICRON DELTA KAPPA

Eta Circle

Omicron Delta Kappa was founded at Washington and Lee University in 1914. Eta Circle was installed at the College of William and Mary in 1921.

Omicron Delta Kappa is an honorary fraternity for men; its members are chosen for eminence in college activities. Each year there is a tap service in college convocation for the designation of new members.

Active Members

Students: Huntington W. Curtis, Edgar J. Fisher, Jr., James B. Hickey, Douglas R. Robbins, Samuel B. Robbins, Jr., Charles Malcolm Sullivan (President).

Faculty: Theodore S. Cox, William George Guy, Charles Trawick Harrison, John E. Hocutt, Charles Post McCurdy, Jr.

AIDES TO THE PRESIDENT

The Aides to the President are a group of students, usually juniors and seniors, appointed by the President to serve as his personal aides in receiving and entertaining guests of the College. The Aides occupy a position in the academic procession and assist in all public affairs. The following, with others to be appointed in September, are the Aides for the session 1941-42:

DOUGLAS R. ROBBINS	HUNTINGTON W. CURTIS
SAMUEL B. ROBBINS, JR.	ROBERT STANLEY HORNSBY
BENJAMIN SMITH READ	CHARLES MALCOLM SULLIVAN

MORTARBOARD

Mortarboard is a women's national honor society whose members are elected in their junior year on the three-fold basis of scholarship, leadership, and service. It endeavors to assist the College each year by fostering scholarship among the students and encouraging a wholesome college atmosphere.

OFFICERS FOR 1941-42

<i>President</i> -----	CAROLYN COOK	/	
<i>Vice-President</i> -----	JEANNE LOUISE REINDOLLAR	A	
<i>Secretary</i> -----	TABB TAYLOR	A	
<i>Treasurer</i> -----	FLORENCE R. YACHNIN	A	
<i>Historian</i> -----	MARY MARGARET FIGLEY	D	
<i>Editor</i> -----	EDITH GRINNELL RATHBUN	A	
<i>Members</i> -----	{	MILDRED ANNE HILL	D
		CLAIRE LOUISE HULCHER	D
		THEODOSIA S. KELCEY	D
		ETHEL VIRGINIA TEAL	D

PROFESSIONAL SOCIETIES

Accounting Club, Hugh Latimer Watson, President.
 Chi Delta Phi (literature), Jane Alden, President.
 Eta Sigma Phi (ancient languages), Sidney Grayson Clary, President.
 Euclid Club (mathematics), Huntington W. Curtis, President.

- Kappa Delta Pi (education), Patricia Nichols, President.
- Kappa Omicron Phi (home economics), Margaret Mary Polatty, President.
- Lambda Phi Sigma (music), John P. Feaster, Vice-President.
- Sigma Pi Sigma (physics), Huntington W. Curtis, President.
- Theta Alpha Phi (dramatics), Anthony Belmont Manzi, President.
- Theta Chi Delta (chemistry), Gilmer T. Fitchett, President.
- Wythe Law Club, Anthony Champa, Chancellor.

INTEREST GROUPS

- Backdrop Club (production of annual all student Varsity Show), Jane Harden, Secretary.
- Clayton Grimes Biological Club, Elizabeth Jane Wakeman, President.
- Dramatic Club, Anthony Belmont Manzi, President.
- French Club, Virginia Alice Tripp, President.
- Foreign Travel Club, Jean Rhodes Edwards, President.
- House of Burgesses (government), Edward Morrison Cook, Leader.
- International Relations Club, Edward Morrison Cook, President.
- J. Lesslie Hall Literary Society (women), Doris Berg-Johnsen, President.
- Library Science Club, Margaret Lee Alexander, President.
- Psychology Club, Virginia Alice Tripp, Vice-President.
- Scarab Society (art), Paul deS. Couch, President.
- Spanish Club, Cecil Allan Brown, Vice-President.
- The Pan American League (promoting interest in Latin American geography, government, and music), Emalee I. Ewing, President.

The Phoenix Literary Society (men, merged with Philomathean Literary Society in 1938), Albert Simerman, Vice-President.

Thomas R. Dew Club of Economics, Frederick A. Gage, President.

Varsity Club, William F. Goodlow, President.

William and Mary History Club, Tabb Taylor, President.

Women's Glee Club, Jacqueline Phillips, President.

Women's Monogram Club, Florence R. Yachnin, President.

SOCIAL SOCIETIES

F.H.C. Society

The F.H.C. Society, the oldest undergraduate organization in the United States, was founded at the College of William and Mary, November 11, 1750. It is an honorary social organization and annually elects six outstanding men from the Junior Class.

Active Members:

Students: William F. Goodlow, Gordan Elliot Hanson, Montie S. Meeks, Benjamin Smith Read, Douglas R. Robbins (President).

Faculty: Joseph C. Chandler, Harold L. Fowler, J. Wilfred Lambert, Roscoe C. Young.



The German Club (women interested in sponsoring co-ed formal dances), Mary Margaret Figley, President.



"13" Club (selects thirteen socially outstanding men annually), William C. West, Vice-President.

Fraternity Regulations



FOR purposes of inspection and regulation all fraternity houses are classified by the Board of Visitors as dormitories and are subject to all dormitory rules and regulations concerning general conduct.

Inspection

College authorities at all times have the right of access to fraternity houses for purposes of inspection and administration.

Residence

A Freshman may not room in a fraternity house during his or her first year at college or before initiation, provided, however, that special permission to assume residence in a fraternity house may be granted at the beginning of the second semester when the Freshman and the fraternity agree upon initiation within fifteen days after the beginning of the second semester. In the case of men, this exception will be granted only with regard to rooming privileges and does not excuse the student from boarding in the College Refectory.

A transfer student who is not a member of a fraternity upon entering the College of William and Mary must conform to the residence requirements which apply to Freshmen. A transfer student who is a member of a fraternity upon entrance must meet all requirements for initiation before permission to live in a fraternity house will be granted.

No person who is not a bona fide student of the College and a member of the fraternity will be permitted to live in a fraternity house.

No student who has reserved a room in a dormitory will be permitted to transfer to a fraternity or sorority house after August 15.

No student may move from a dormitory to a fraternity house after registration for the second semester begins.

Initiation

To be eligible for initiation a student must have passed ten academic hours in the preceding semester.

No student may be initiated by a fraternity except upon the presentation of a statement from the Registrar to the effect that the academic requirement has been met.

Fiscal Management

All fraternities are required to submit statements of income and expenses, together with statements of operating costs and accounts receivable and payable at such times and upon such occasions as the College may require.

Discipline

Hazing or the subjection of a student to any form of humiliating treatment is forbidden.

REGULATIONS GOVERNING SOCIAL AFFAIRS IN THE MEN'S FRATERNITY HOUSES

1. Women are not permitted to visit fraternity houses except on occasions of parties, dances, receptions, etc., held in accordance with College regulations.
2. A proposed calendar of social events planned by a fraternity during each semester must be presented to the Schedule Committee at the beginning of each semester. An approved schedule will be returned to each fraternity by the Schedule Committee. No dance or party may be scheduled unless a request is made at least three days prior to the day of the party.
3. No more than three parties or dances can be held by a fraternity during the session. No more than two such parties can be held during any semester. Parties or dances are not permitted to be held off campus.
4. Before a dance or party is held, a complete list of chaperons and guests must be submitted to the

office of the Assistant Dean of Women before noon on the day of the party. Names may not be added after this hour. Chaperons must be persons associated with the College.

5. Parties may be held on Friday or Saturday nights only, except on special occasions specifically approved (see Number 9). No parties will be allowed on Saturday nights when College dances are scheduled.
6. Parties held on Friday and Saturday nights must be brought to a close in time for the women to be in their respective houses by 12 o'clock midnight. Picnics and such other affairs must be brought to a close in time for the women to return to the campus by 8 p. m. Parties held on special occasions must be brought to a close in time for the women to be in their respective houses by 11 p. m.
7. Any fraternity against which financial complaints have been filed may be denied permission to have parties.
8. Each fraternity is held responsible for the conduct of its members in conforming with these regulations.
9. The privilege of holding parties on special occasions, subject to such rules as may appear desirable in each case, is subject to the discretion of the Schedule Committee.

Men's Social Fraternities



THE present extensive system of collegiate social fraternities had its inception at the College of William and Mary with the founding of Phi Beta Kappa on December 5, 1776. Phi Beta Kappa was established as a secret organization and so remained until 1831 when the Chapter at Harvard University was, as a result of vigorous assault on anti-democratic organizations by the leaders of the Anti-Mason political party, forced to divulge its secrets. Since that time the Phi Beta Kappa has been a purely honorary fraternity, membership in which constitutes the highest honor which can be achieved by a college student.

The first social fraternity, in the modern sense of the term, to be established at the College of William and Mary was Theta Delta Chi, which placed its Epsilon Charge here in 1853. Sigma Alpha Epsilon followed in 1857, and a few years later, 1871, Pi Kappa Alpha received permission to establish a chapter. These three remained the only fraternities at the College until 1890, when chapters were established by Kappa Alpha and Kappa Sigma. Sigma Phi Epsilon, which had been founded at Richmond College a few years before, entered the fraternity field at William and Mary in 1904.

The limited number of students at the College rendered unnecessary further fraternity expansion until about 1919. In that year the College began a period of rapid growth and the greatly increased enrollment led to the establishment of a number of new fraternities on the campus. Most of these organizations were started as local clubs but all have now been absorbed by national fraternities. From 1922 to 1931, the following national fraternities established chapters at William and Mary: Sigma Nu in 1922, Phi Kappa Tau in 1926, Lambda Chi Alpha and Phi Alpha in 1927, Pi Lambda Phi in 1929, Alpha Phi Delta in 1930 and Sigma Pi in 1931. Sigma Rho, a local fraternity, was established in 1937.

The Fraternity Association, composed of the presidents of the various fraternity chapters, acts as a gov-

erning body and in this capacity draws up regulations for the conduct of the individual chapters, prescribes rules for rushing and in general promotes wholesome interfraternity relations.

THE FRATERNITY ASSOCIATION OF THE COLLEGE OF WILLIAM AND MARY

Constitution

Article I—Name.

The name of this association shall be: The Fraternity Association of the College of William and Mary.

Article II—Objects.

The objects of this association shall be:

1. To promote cordial relationships among the fraternities of this college by providing a common medium through which to act;
2. To encourage interest in scholarship and intellectual attainment;
3. To cooperate with the faculty and administrative officers of the college for the general welfare of the college;
4. To establish rules governing matters of general interfraternity activity.

Article III—Membership.

1. The Fraternity Association of the College shall include all men's social fraternities at present established in this college, and such others as may be established in the future by the authority of the Board of Visitors;
2. The supreme authority of this Association shall be vested in an Executive Committee composed of the presidents of each member of the Association who shall hold membership in this Committee *ex officio*. The term of each member shall last from the regular meeting in May of the year for which he is elected until May of the following year;
3. Each member of this Committee shall be entitled to one vote and all business shall be transacted by majority vote except as otherwise herein provided;

4. With approval of the President of this Association any member of this Association may appoint a representative to act on his behalf.

Article IV—Meetings.

1. There shall be at least one meeting during the months of September, October, November, December, February, March, April, and May, which meetings shall be called by the president;
2. Additional meetings shall be called at the initiative of the president, or at the request of any member;
3. For the purpose of transacting business, a quorum shall consist of three-fourths of the members in good standing.

Article V—Officers.

1. The officers shall be a President and a Secretary-Treasurer;
2. The office of President shall rotate annually among the members of the Executive Committee of this Association in the order of the establishment of their respective fraternities at the College;
3. The office of Secretary-Treasurer shall rotate annually among the members of the Executive Committee of the Association in the reverse order of establishment, provided, however, that, if under this clause the Secretary-Treasurer in normal course would be a member of the same fraternity as the President, the office of Secretary-Treasurer shall devolve upon the next fraternity in line;
4. The terms of these officers shall run for one year from the regular meeting in May. The regular May meeting shall be presided over by the new officers after they have been inducted at that meeting;
5. The duties of these officers shall be: those usually performed thereby, and in addition, such others as may be directed by the Executive Committee.

Article VI—Voting.

1. A three-fourths vote of the entire Executive Committee shall be necessary in order to:
 - a. Amend this Constitution;

- b. Modify the rules and regulations governing rushing, pledging, and initiation; rules and regulations attached hereto are made a part of this Constitution;
 - c. Place any member thereof on probation.
2. The vote of any member, or members, of this Association against which charges have been presented shall be suspended automatically pending final action, provided, however, the suspension of the right to vote shall apply only to matters pertinent to such charges.

Article VII—Dues.

1. Each member of this Association shall pay annual dues of five (\$5.00) dollars. At the end of each tribunal period any sum in excess of fifty (\$50.00) dollars in the treasury of the Association shall be returned pro rata;
2. Dues shall be payable at the September meeting, and any member which has not paid within two weeks thereafter shall lose its vote in the Executive Committee until it is paid;
3. All disbursements shall be made only on written order signed by the President and Secretary-Treasurer.

Article VIII—Probation.

1. Probation, for the purposes of this Constitution, shall be deemed to mean that the member placed thereon is no longer in good standing:
2. The following acts shall be cause for placing the offending member on probation:
 - a. Any willful violation of this Constitution or the rules or regulations hereinbefore mentioned;
 - b. Any act which the Association by a three-fourths vote shall deem detrimental to the welfare of the College and this Association;
 - c. Whenever a member of the Association is alleged to have committed an act which may result in its being placed on probation, a charge to this effect, signed by a member of the Executive

Committee, shall be placed before such Committee; whereupon the alleged offending member shall be notified of the nature of the charge and by whom made, and the Committee shall hear the defense, if any, before taking action.

3. By a three-fourths vote within the discretion of the Executive Committee of this Association, one or more of the following penalties may be imposed upon any member of this Association placed on probation:
 - a. Denial of the right to hold any social function;
 - b. Deferred rushing;
 - c. Deferred pledging;
 - d. Deferred initiation;
 - e. Loss of vote in the Executive Committee.
4. When a member of this Association shall be placed on probation, the President of the College shall be notified of the Association's action. When approved by him, there shall be published in two successive issues of the *Flat Hat* notice to this effect, and the Secretary-Treasurer of this Association shall notify the proper national officers of the fraternity placed on probation.

Article IX—Secrecy.

The Executive Committee, by unanimous vote of all members entitled to vote, may provide in advance that disclosures of matters coming to its attention, either as a result of charges brought against a member, or members, of this Association, or as to internal affairs of the individual members voluntarily disclosed thereby, shall constitute dishonorable conduct and shall be referred to the Honor Council for appropriate action.

AMENDMENTS

I. Membership

1. There shall be two representatives from each fraternity in the Association. Of these, one shall be the president of the fraternity and the other a member of the fraternity appointed by the president of the fraternity.

2. There shall be a member of the faculty elected as advisor for the Association by the members of the Association for a term of one year.

II. Time of Meetings

Meetings shall be held on the first Wednesday after the second Tuesday in each month.

APPENDIX—RULES AND REGULATIONS

Rushing Rules.

1. *Time and limits.*
 - a. Formal rushing shall begin at two o'clock p. m. on the first Saturday following the date on which fall mid-semester grades are due at the office of the Registrar.
 - b. From twelve o'clock midnight on Friday until the following Sunday at noon, no fraternity man shall mention a fraternity to a freshman.
 - c. Invitations to join fraternities shall be transmitted by mail by letters posted not earlier than four o'clock p. m. on Friday, the final day of the formal rushing period.
2. *Pre-rushing regulations.*
 - a. A freshman may visit in a fraternity house until twelve o'clock midnight.
 - b. Fraternity members shall be on their honor not to "talk fraternity" to freshmen until the formal rushing period begins.
 - c. No freshman may be invited to meals by any fraternity man before the formal rushing period begins.
 - d. Prior to the formal rushing period there shall be no rushing of freshmen in any manner whatsoever, provided, however, that normal or customary friendly associations may be maintained.
3. *Formal rushing period regulations.*
 - a. Total rushing expenses shall not exceed \$85.00 per fraternity, and an itemized account of all expenses shall be submitted to the President of the Fraternity Association of the College by

each fraternity not later than noon on Saturday following the period (Silence Day).

- b. No freshman shall remain in a fraternity house overnight.

4. *Repledging.*

- a. No man pledged to a fraternity whose pledge is terminated shall be pledged to another social fraternity for a period of sixty (60) days.

- b. The president of the fraternity or the man dep-pledged, shall notify the Secretary-Treasurer of the Association of the date of the termination of the pledge.

- c. A man will be considered deppledged upon the date that the Secretary-Treasurer of this Association receives notification.

EXECUTIVE COMMITTEE OF THE FRATERNITY ASSOCIATION

President—_____, Kappa Alpha.

Secretary-Treasurer—BERNARD ITZKOWITZ, Phi Alpha.

Members:

SIDNEY GRAYSON CLARY, Lambda Chi Alpha
 EDWARD MORRISON COOK, Sigma Alpha Epsilon
 JOHN P. FEASTER, Pi Kappa Alpha
 WILLIAM F. GOODLOW, Sigma Rho
 GORDON ELLIOT HANSON, Phi Kappa Tau
 HERBERT V. KELLY, Sigma Pi
 HARRY ROSS KENT, Kappa Sigma
 EARL OLIVER KLINE, Kappa Sigma
 JOSEPH HAROLD MARKOWITZ, Pi Lambda Phi
 ANTHONY WILLIAM MAUCIONE, Lambda Chi Alpha
 JOHN THOMAS MOUGEY, Theta Delta Chi
 THOMAS G. PAYNTER, Phi Kappa Tau
 JAMES EDGAR POINTER, JR., Sigma Pi
 SAMUEL B. ROBBINS, JR., Sigma Alpha Epsilon
 JOSEPH H. SOLOMON, Pi Lambda Phi
 JAMES A. WELSH, JR., Theta Delta Chi

✓ **THETA DELTA CHI****Epsilon Charge**

Established 1853

Theta Delta Chi Fraternity was founded at Union College in 1847. The Epsilon Charge was established at the College of William and Mary in 1853. Theta Delta Chi was the first fraternity to use a pledge pin, have an official flag, issue an official publication, and to adopt official flower and colors.

The Fraternity is located at 606 Richmond Road.

Pledge fee: \$5.00.

Pledge dues: None.

Initiation fee: \$70.00, including pin, certificate of initiation, directory, and life subscription to *The Shield*.

Active dues: \$6.00 per month.

Description of badge: A shield displaying the Greek letters "Theta Delta Chi" surmounted by two stars; below are two crossed arrows.

Members**Class of 1942:**

Willard A. Bergwall, Brendan Austin Burns, Jr., John Thomas Mougey,* Benjamin Smith Read, James Augustus Welsh, Jr.

Class of 1943:

William A. Bogg, Jr., Wesley Earle Chesson, Jr., Hughes Wescott Cunningham, Stuart Palmer Hurley, Wesley H. Newhouse, George Shepherd Peck, Robert W. Sanderson, William B. Tarry, Jr.

Class of 1944:

Thomas L. Bartlett, Robert Durfee Chapman, David Sanford Williamson.

Pledges:

John Douglass Camp, '44, David Chittim, '43, Robert Bernard Ellert, '44, Wilfred Ferguson, Jr., '43, Thomas H. Forrer, '44, Kenneth Rand McGinn, '44, Robert S. Marshall, '43, George L. Olmstead, '44, Edgar K. Wells, '44.

Asterisk (*) indicates president.

✓ SIGMA ALPHA EPSILON

Virginia Kappa Chapter

Established 1857

Sigma Alpha Epsilon Fraternity was founded at the University of Alabama in 1856. Virginia Kappa Chapter was established at William and Mary in 1857. The local chapter was discontinued after the War Between the States, since a large number of its members fought in the War and many were killed. The Chapter was revived in 1925 and has been in existence ever since.

Sigma Alpha Epsilon, with 113 chapters, is the largest fraternity in the country.

Pledge fee: \$10.00, including Pledge Manual and Paragraph History.

Pledge dues: \$1.50 per month.

Initiation fee: \$60.00, including pin, certificate of initiation, and life subscription to *The Record of Sigma Alpha Epsilon*.

Active dues: \$5.00 per month.

Description of badge: Lozenge shaped, bearing a crest depicting a lion and the Goddess of Liberty above which are the Greek letters "Sigma Alpha Epsilon"; below, the Greek letters "Phi Alpha" in an olive wreath.

Members

Class of 1942:

Robert L. Amonette, Jr., George Thomas Blanford, Edward Morrison Cook, Richard Joseph Davis, Louis Lansing Jones, John D. May, Douglas R. Robbins, Samuel B. Robbins, Jr.*

Class of 1943:

Peter M. Axon, Jr., Marvin Crosby Bass, William Albert Chafin, Chipman W. Cunningham, Harvey F. Marriner, Orville R. Vaughan, Jr., James Joseph Ward, Jr., William H. Weeks.

Asterisk (*) indicates president.

Class of 1944:

William E. Albert, John Scott Entwisle, Robert F. Longacre, Willard S. Smith, Walter W. Weaver.

Pledges:

David William Bucher, '44, Robert William Conkey, '44, Charles G. Ellett, '44, Walter Charles Hackett, '44, Richard A. Hill, '44, John Milton Hollis, '44, Drewery H. Holloway, '44, Mark Oreste Lapolla, '44, Donald Lyle Ream, '44, Caleb Van Warrington, '44.

✓
PI KAPPA ALPHA

Gamma Chapter

Established 1871

Pi Kappa Alpha was founded at the University of Virginia in March, 1868. Until 1909 the fraternity was confined to the South, later becoming national in scope. There are now eighty-three chapters with a membership of more than 22,000. Five of these chapters are in Virginia.

Gamma Chapter of Pi Kappa Alpha was founded at the College of William and Mary in 1871, and now has more than 350 Alumni.

Pledge fee: None.

Pledge dues: None.

Initiation fee: \$65.00.

Active dues: \$5.00 per month.

Description of badge: Diamond surmounted upon shield.

Members

Class of 1942:

John P. Feaster, Montie S. Meeks, Charles Malcolm Sullivan, Hugh Latimer Watson, William Clyde West.

Class of 1943:

Cecil Allan Brown, Harry D. Cox, Edward F. Dratz, Harold Baker King.

Class of 1944:

Frank Anton Eger, Jr.

Pledges:

Hudson Lane Dudley, '44, Robert W. Eastham, '44, James B. Hendry, '44, Jesse Benjamin Kendler, '44, Harvey Grover Pope, '44, Joseph E. Sandlin, '43, Edgar Everet Trout, '44, William Benedict Ward, '44.

Asterisk (*) indicates president.

✓ **KAPPA ALPHA****Alpha Zeta Chapter**

Established 1890

Kappa Alpha Order was founded at Washington College (now Washington and Lee University) in 1865. The order was begun with the aid of General Robert E. Lee of the Confederate Army, then President of the College. At present there are sixty-eight chapters stretching from coast to coast. Alpha Zeta Chapter was founded at the College of William and Mary in 1890, and has been continually active longer than any other fraternity on campus.

Pledge fee: \$25.00.

Pledge dues: None.

Initiation fee: \$50.00, including badge, certificate of initiation, directory, publications, life subscription to *Kappa Alpha Journal*.

Active dues: No national dues. Local dues, \$5.00 per month.

Description of badge: A gold shield, in the center of which is a circle of black enamel enclosing a cross, and above which are the Greek letters "Kappa Alpha."

Members**Class of 1942:**

Hunter Booker Andrews, George Farish, Edgar J. Fisher, Jr., Hansford Oliver Foster, Arthur Vick Swanson.

Class of 1943:

Lloyd A. Clarke, Jr., Nathaniel R. Coleman, Jr., Paul deS. Couch, William E. Harding, Henry Lester Hooker, Jr., Henry VanAmburgh Joslin, Robert S. Knight, William B. Pope, Jr., Carl Marvin Voyles, Jr.

Class of 1944:

Richard C. Alcorn, Chester J. Claudon, Jr., William M. Grover, Jr., Donald Hahne, William Vernon Hanson, Robert F. Matthews, Jr., William C. Remick.

Pledges:

William Garland Clarke, '44, Joseph Troy Fowlkes, '44, Dixon L. Foster, '44, Wayne Fulton Gibbs, Jr., '44, John Calvert Marshall, '44, Frank Foster Macklin, '43, Robert Luman Wing, '43.

✓ **KAPPA SIGMA****Nu Chapter**

Established 1890

The Kappa Sigma Fraternity was founded on December 10, 1869 at the University of Virginia. The Nu Chapter was established on this campus in 1890. Since its inception the fraternity has grown rapidly, having at the present time one hundred and ten active chapters located all over the United States and Canada. The fraternity has initiated over 46,000 members. Nu Chapter alone has initiated over 300 members.

Pledge fee: \$10.00.

Pledge dues: None.

Initiation fee: \$50.00, including a life subscription to the Fraternity Magazine, *The Caduceus*, and a plain gold pin.

Description of badge: Crescent, turned downward, holding five pointed star with the Greek letters "Kappa Sigma."

Members**Class of 1942:**

William E. Downing, Thomas E. Smith.

Class of 1943:

Marvin J. Allison, James Robert Anderson, Francis E. Clark, William H. Hollings, Jr., Harry Ross Kent, Earl Oliver Kline,* Page Harding Seekford.

Class of 1944:

Norman A. Allen, Jr., Theodore H. Bailey, Jr., Albert Webster Clay, Otho Wescott Custis, John Gordon, Kenneth Arthur Murray, Richard D. Sanders, Jr.

Pledges:

George Allan Chapman, '43, Florencio Coll, '44, Pascal Wilson Cooper, '44, Harry Lee Morton, '42, Gilbert Cecil Reveille, Jr., '43, Charles Edward Smith, '43, John Wesley Todd, '43, Kenneth Joseph Winfield, '44, Dudley L. S. Woods, Jr., '44.

Asterisk (*) indicates president.

PHI KAPPA TAU

Alpha Theta Chapter

Established 1926

Phi Kappa Tau was founded at Miami University, Oxford, Ohio, on March 17, 1906. Since that time it has grown steadily and conservatively, until today it is one of the better-known American Greek Letter Societies. The forty-seven chapters of Phi Kappa Tau—initiating over 500 men annually—represent it in outstanding colleges and universities throughout the United States.

The Alpha Theta Chapter of Phi Kappa Tau was established at William and Mary in 1926. The chapter has striven to maintain the ideals of the national organization, and today is one of the leaders in all phases of campus activities.

Pledge fee: \$15.00.

Pledge dues: Determined by pledges, ususally nothing.

Initiation fee: \$45.00 including national dues, certificate of initiation, directory, publications, life subscription to *Phi Kappa Tau Laurel*.

Active dues: Local, \$3.00 to \$4.00 per month.

Description of badge: Oblong, rounded on four corners, jewelled star and Greek symbols, "Phi Kappa Tau," in center, border composed of pearls.

Members

Class of 1942:

Robert D. Aldrich, Ewing Thomas Boles, Jr., Patrick E. Cirigliano, William M. Clinton, Gordon Elliott Hanson,* Clarence Foster Jennings, Anthony Belmont Manzi, Thomas G. Paynter.

Class of 1943:

Charles Robert Butler, Thomas W. Miller, Jr., Robert John Rose, Jr., Mervyn Wood Simpson, Dyckman W. Vermilye.

Asterisk (*) indicates president.

Class of 1944:

William C. Gill, Jr., Joseph Gordon Gilliam, Charles Webster Massey.

Pledges:

Frances Joseph Brichter, '42, William K. Diehl, '43, Robert J. Faulconer, '44, Robert B. Warner, '44, Vincent D. Woolley, '42.

LAMBDA CHI ALPHA

Epsilon Alpha Zeta

Established 1927

Alpha Zeta of Lambda Chi Alpha was founded at Boston University on November 2, 1909, and by 1920 had established a central office at Indianapolis, Indiana.

Steadily and discriminatingly the fraternity has expanded until today it has one hundred and seven chapters.

On May 16, 1927, Alpha Tau Epsilon at the College of William and Mary became the seventy-third chapter of Lambda Chi Alpha. Epsilon Alpha Chapter was originally located on Jamestown Road, but in the spring of 1934 bought the house located at 607 Richmond Road, which it now occupies.

Pledge fee: \$15.00.

Pledge dues: None.

Initiation fee: \$35.00.

Active dues: Local, \$15.00 per semester.

National, \$5.00 per semester.

Description of badge: A pearled Lambda over Chi and Alpha within a pearled crescent.

Members

Class of 1942:

Robert Donnelly, Jr., Anthony William Maucione.

Class of 1943:

Sidney Grayson Clary,* Richard W. Thomas.

Class of 1944:

H. E. Bruce Simmons.

Pledges:

George M. Heathcote, Jr., '44, Colin C. Macdonald, Jr., '44.

Asterisk (*) indicates president.

PHI ALPHA**Tau Chapter**

Established 1927

The Phi Alpha national social fraternity was founded at George Washington University in 1914. The fraternity includes twenty active undergraduate chapters, and sixteen alumni chapters. On February 22, 1927, the Zeta Theta Pi local fraternity, which had been established on this campus in 1925, was installed as Tau Chapter of Phi Alpha Fraternity.

Pledge fee: None.

Pledge dues: None.

Initiation fee: \$70.00.

Active dues: \$1.00 per month.

Description of badge: Oblong pin with upraised letters "Phi Alpha" surrounded by fifteen inset pearls.

Members**Class of 1942:**

Bernard Itzkowitz,* Lawrence L. Leshan.

Class of 1943:

Ira Bernard Dworkin, Eugene James Glassman.

Class of 1944:

David Norman Glucksman, Walter Harry Horvitz.

Pledges:

Stanley D. Friedman, '44, Eugene Philip Goldschmidt, '44.

Asterisk (*) indicates president.

✓ PI LAMBDA PHI

Psi Chapter

Established 1929

The Pi Lambda Phi fraternity was founded at Yale University in 1895, having for its cardinal principles, non-sectarianism and the recognition of men on the basis of ability. Since its founding the fraternity has spread throughout the east and middle west. In 1916 the fraternity was re-organized with the objective of establishing more chapters, and to that end the National Executive Council was organized to guide the policies and procedure of the fraternity.

Psi Chapter at William and Mary was established in 1929 with nine charter members.

Pledge fee: None.

Pledge dues: None.

Initiation fee: \$75.00.

Active dues: \$3.00.

Description of badge: Shield, surmounted by lion's head, crossed swords, torch, and lamp.

Members

Class of 1942:

Joseph Harold Markowitz.*

Class of 1943:

Milton Greenblatt, James K. Levy, Joseph Herman Solomon.

Class of 1944:

Jerome Elliot Hyman, Robert L. Weinberg.

Pledge:

Iver Morton Brook, '44.

Asterisk (*) indicates president.

SIGMA PI**Alpha Eta Chapter**

Established 1931

Sigma Pi Fraternity was founded at Vincennes, Indiana, in 1897. There are thirty-one active chapters. The chapter on this campus was founded in 1931. For the first four years the chapter had a house on the Richmond Road. In 1934 it moved to South Tyler Annex, its present location.

Pledge fee: \$5.00.

Pledge dues: \$1.00 per month.

Initiation fee: \$37.50.

Active dues: \$3.00 per month.

Description of badge: Greek cross bearing a raised oval with emerald at center, between the Greek letters "Sigma" and "Pi." The arms of cross display a scroll, a balance, a wreath, and ten stars.

Members**Graduate Students:**

Robert Edward Griffin, Herbert Valentine Kelley.*

Class of 1942:

Huntington W. Curtis, Claude Kelso Kelley, James Davis Leftwich, Harlie Hugh Masters, Clement Forrest Sinclair, Augustus Milton Winder.

Class of 1943:

Lewis Powell Butterworth, Arthur duPont Chambliss, Robert Wilmer Coiner, William Alda Lugar, James Edgar Pointer, Philip Randolph Thomas, Joseph Montgomery Holland.

Class of 1944:

Henry Bowers Pitzer.

Asterisk (*) indicates president.

Pledges:

Robert Gordon Appenzeller, '44, Ernest Melvin Bowman, '44, Regis Bernard Brown, '44, William Murchison Ditto, '44, Roy Barclay Merritt, '42, Henry August Schutz, '44, Howard Marston Smith, '43, Robert Edward Walsh, '44, William Fleming Way, '42.

 **SIGMA RHO**

Established 1937

Sigma Rho was formally established as a local fraternity at William and Mary on May 12, 1937, by a group of men who realized the advantages of a local fraternity. Sigma Rho is well represented in varsity and in intramural athletics. The intramural championship for the past three years has been won by Sigma Rho.

Pledge fee: None.

Pledge dues: None.

Initiation fee: None.

Active dues: 25c per week to provide social functions for the group.

Description of badge: Shield, handle and tip of sword at diagonal, with chain from handle to tip. The shield bears a lamp and crown and a panel bearing the Greek letters "Sigma Rho."

Members**Class of 1942:**

William F. Goodlow,* James Benton Hickey, Glenn Charles Knox, Vincent A. Lascara, Charles Herbert Moore.

Class of 1943:

Harvey P. Johnson, Guy Hart Moates, Garrard S. Ramsey, Alfred B. Vandeweghe.

Class of 1944:

William Abbots, III, Salvatore Victor Colonna, John Frank Grembowitz, Robert John Howard.

Pledges:

Joseph J. Bottalico, '44, Delmar John Dee, Jr., '43, Harold H. Fields, '43, Howard A. Fiery, '43, John Joseph Freeman, '43, Elmo C. Gooden, '44, Newell S. Irwin, Jr., '42, Garland L. Isaacs, '43, John Frank Korczowski, '43, John F. Peterson, '43.

Asterisk (*) indicates president.

Women's Social Sororities



PAN-HELLENIC COUNCIL

President

PHYLLIS ANNE HILE.....Gamma Phi Beta

Secretary-Treasurer

NATALIE JANE ROGERS.....Chi Omega

Scholarship Chairman

KATHERINE LEA DONALD.....Kappa Alpha Theta

Social Chairman

VIRGINIA M. SMITH.....Kappa Kappa Gamma

Members:

CLAIRE PAULINE BARDWELL, Chi Omega
 EVELYN GOODWIN BUELL, Kappa Kappa Gamma
 EVELYN L. COSBY, Pi Beta Phi
 ELIZABETH J. COSTENBADER, Delta Delta Delta
 DORIS RUTH FREER, Alpha Chi Omega
 ELEANOR R. GRAHAM, Alpha Chi Omega
 MARJORIE E. HOPKINS, Phi Mu
 CARRIE VIRGINIA HUMPHRIES, Kappa Delta
 MARY JO HUNDLEY, Phi Mu
 THEODOSIA S. KELCEY, Pi Beta Phi
 NATALIE L. SMITH, Kappa Alpha Theta
 FRANCES VIRGINIA STERNE, Delta Delta Delta
 DOROTHY ROBERTA VOGEL, Kappa Delta
 SUZANNE C. ZIHLMAN, Gamma Phi Beta

PANHELLENIC RUSHING RULES FOR 1941

THE Panhellenic Council approves the following system of rushing and bidding. The rules are here printed in order that Freshmen and other new students may know them and cooperate with the Council in upholding them.

There is to be no sorority talk by any sorority member. Information about each sorority will be found in the **Indian Handbook**, and in short histories of each sorority, which will be available at the respective houses when open rushing begins. Such talk accordingly will not be necessary. Miss Beverly Massei, the Panhellenic faculty adviser, will give a short talk to the new students during the first week of the session to explain the sorority system on this campus and the rushing rules. She will also answer any necessary questions which the freshmen may wish to ask. Following the preferential rushing period, open rushing will prevail throughout the college year.

On Monday, September 22, any *one* sorority girl accompanied by any *one* of another sorority between 9 a. m. and 6 p. m. may visit once any friends in the dormitories for not more than half an hour per visit. "Little sisters" (in Y. W. C. A.) may be visited at any time for a period of one half hour per visit by the "Big Sister" alone.

The following rules have been adopted by the Council:

1. There shall be no sorority talk during the period by any sorority member, patroness, or alumna. "Sewing up" at any time before the end of rushing is sorority talk. Scrapbooks and publications may be used *without comment* from the members in the sorority houses. Songs may be sung. During dormitory rushing notepaper with sorority identification may be used.
2. Rushing shall be confined to the William and Mary campus, and the first block of Duke of Gloucester Street. There shall be no driving of rushees in cars except of rushees not living in dormitories. These girls may be brought to and from dates at the sorority houses.
3. No money shall be spent beyond the sum of forty-five dollars, which the Council has fixed as the maximum. This does not include the notepaper used during the dormitory rushing, the cigarettes or the invitation cards to the houses from September 29-October 2. All other rushing expenses

- must come out of this sum, and the expense accounts of each sorority shall be read before the Council.
4. Girls may be offered cigarettes during dormitory rushing.
 5. There shall be no outside entertainment at either of the rushing parties or at the open house, and no men may attend either party or the open house or be in evidence during any time when rushing is going on in the houses. No sorority may request men to rush for them.
 6. In conjunction with the Freshman Orientation program each fraternity house shall be open to all freshmen on Sunday, September 21. The purpose of this invitation is to create a better feeling of understanding and democracy. No refreshments or entertainment may be provided.
 7. For dates with town girls down town, sorority girls may treat the town girls to a ten-cent drink, or may treat them out of their own money, not out of the rushing fund, at their discretion.
 8. Sorority girls may accept candy and cigarettes from the rushees at their discretion.

The following program for the rushing period has been adopted by the Council:

1. From September 22 through September 26 any sorority girl, including any sorority girl living in a dormitory, may visit a new student at any place on the campus or on the first block of the Duke of Gloucester Street (except in sorority houses) for a time of one-half hour a day. No dates may be arranged except with girls not living in dormitories.
2. The rushing hours during this period will be:
 - Monday, September 22: 4-6 p. m., ~~7-9 p. m.~~
 - Tuesday, September 23-Thursday, September 25: 4-6 p. m., and 7-9 p. m. or 8-10 p. m.
 - Friday, September 26: 4-6 p. m.
3. Rushing in the houses shall begin on Sunday, September 28. Dates for all girls will be ar-

8-10

ranged by the Council. Such rushing will last through Thursday, October 2.

Sunday, September 28: Receptions 2-6 p. m.

No rushing on Monday, September 29.

Friday, October 3: Preferential Party, 7-10 p. m.

Saturday, October 4: Silence Day .

Sunday, October 5: Acceptance.

NOTE: These hours are subject to change in accordance with College functions.

CHI OMEGA
Omicron Beta Chapter
 Established 1921

Chi Omega was founded at the University of Arkansas, April 5, 1895. In these brief forty-six years it has grown until now it is the largest national woman's social fraternity with ninety-six active and seventy-four alumni chapters.

Omicron Beta Chapter of Chi Omega, installed May 30, 1921, was the first national woman's fraternity on the William and Mary campus. The Chapter, in a constructive effort toward social and civic service, awards annually a prize to the woman student in the College who attains the highest average in the Department of Sociology.

Pledge fee: \$10.00, including pledge pin.

Pledge dues: \$1.00 per month.

Initiation fee: \$59.00, including badge, one year's subscription to *Eleusis*, and national dues for one year.

Active dues: Local, \$3.00 per month.

National, \$8.00 per year.

Description of badge: Monogram of a pearl Chi over a gold Omega.

Members

Class of 1942:

Mary Margaret Figley, Mildred Anne Hill, Claire Louise Hulcher,* Charlotte Ruth Mooers, Jean E. Outland, Natalie Jane Rogers.

Class of 1943:

Jean Elinor Andrews, Anne Emily Armitage, Claire Pauline Bardwell, Betty Jean Buntin, Suzanne R. Eppes, Margaret Langfitt, Margaret Ann McClellan, Mary Lucile Proctor, Gladys G. Scott, Nancy Wise Wescott.

Class of 1944:

Doris Marie Armor, Fay D. Beeks, Louise Catherine Brown, Anne Burton, Mary Wilson Carver,

Asterisk (*) indicates president.

Winifred F. Gill, Barbara Ann Gunnell, Murial Doris Heden, Geraldine Jane Hess, Patricia Leonhard, Elizabeth N. Myers, Joan W. Nourse, Jean Alice Otto, Laura C. Quinn, Ann J. Ray, Elizabeth G. Seay, Marion K. Smith, Nancy O. Throckmorton, Marjorie Jane Webster.

Pledges:

Elsie Dunnick, '44, Lucile Beverly Fizer, '44, Eugenia L. Hutton, '44, Virginia Knerr, '43, Muriel Helen Koch, '44, Dorothy Julia Lay, '44, Hallie Vaughn Rennie, '44.

KAPPA ALPHA THETA

Beta Lambda Chapter

Established 1922

Kappa Alpha Theta, the oldest Greek letter fraternity for women, was founded at De Pauw University, Greencastle, Indiana, in 1870. Since that date it has grown and prospered. Theta is now represented in every section of the United States and in Canada by sixty-four active chapters.

Beta Lambda Chapter of Kappa Alpha Theta, the second women's fraternity on the campus, was established at William and Mary in 1922.

Pledge fee: \$10.00, including pledge pin.

Pledge dues: \$2.50 per month.

Initiation fee: \$50.00 including subscription to *Kappa Alpha Theta*.

Active dues: \$5.50 per month, including national dues.

Description of badge: Kite-shaped, black enamel, having four sides, two diamonds.

Members

Class of 1942:

Barbara Jane Anderson, Katharine Lea Donald, Joan du Laux Lehman, Patricia Nichols.

Class of 1943:

Edith Jacqueline DeBow, Betty Ruth Kirst, Lois Rea,* Natalie L. Smith, Margaret-Anne Thomas.

Class of 1944:

Lillian H. Bourne, Beverly Bruner, Maureen Elizabeth Gothlin, Mary Jane Hollingshead, Marjorie Jean Retzke, Katherine Jane Rohn, Priscilla Jane Schumacher.

Asterisk (*) indicates president.

Pledges:

Patricia Casey, '44, Dorothy Jane Dodd, '43, Nancy Gibb, '44, Nancy Garnett Norris, '44, Joan Schutter, '44, Dorothy Anne Shelby, '44, Elizabeth Steely, '44, Patricia Way Williams, '43.

KAPPA KAPPA GAMMA

Gamma Kappa Chapter

Established 1923

The Upsilon Delta Beta Club was founded on the campus of William and Mary in 1920. On February 16, 1923 the twelve members of Upsilon Delta Beta became charter members of Gamma Kappa Chapter of Kappa Kappa Gamma.

Kappa Kappa Gamma Fraternity was founded at Monmouth College, Monmouth, Illinois, on October 13, 1870. It now extends across the United States and into the southern part of Canada. The national organization includes seventy-two active chapters and one hundred and eighteen alumnae chapters.

Pledge fee: \$5.00, including pledge pin.

Pledge dues: \$2.00 per month.

Initiation fee: \$35.00, including subscription to *Key*.

Active dues: Local, \$4.40 per month.

National, \$4.00 per semester.

Description of badge: Gold key, plain or set with pearls or sapphires or diamonds.

Members

Class of 1942:

Mary Tyler Chadwick, Caroline Cook, Elizabeth E. Craighead, Martha Watkins Gaines, Kitty Trudell Green,* Jane Harden, Betsy Lee Hooper, Nancy Elizabeth Ryan, Frances Smith, Virginia M. Smith, Charlotte Elsie Steitz.

Class of 1943:

~~Evelyn Goodwin Buell, Martha Lu Davidson, Betty Blair Denit, Katharine S. Jones, Wilma Jay Lambert, Mary Ellen Lokey, Mary Louise Morton, Lucille Bennett Pelham, Mary Eloise Schick, Patricia May Steele, Virginia S. Stuart, Priscilla Janet Wilson.~~

Class of 1944:

Margaret Beard, Wilhemena S. Davison, Dorothy Jane Douglas, Helen Hartman, Marjorie Elizabeth

Asterisk (*) indicates president.

Lentz, Lucia Dean Lhamon, Charlotte McElroy, Ann L. Merrihew, Marian Ross, Katharine A. Rutherford, Ann Washington.

Pledges:

Jean Mabel Burnside, '44, Sally Douglas, '44, Rosemary H. Evans, '44, Delores Louise Hampton, '44, Mary Elliott Henderson, '42, Jean Holmes Lochridge, '44, Dorothy Lee Nelson, '44, Patricia Price, '44, Rebecca Lee Ramsey, '44, Jane C. Schilling, '44.

PI BETA PHI
Virginia Gamma Chapter

Established 1925

Pi Beta Phi, pioneer among national fraternities for women, was founded under the name of I. C. Sorosis, at Monmouth College, Monmouth, Illinois. Today Pi Beta Phi has eighty-three chapters and a living membership of 31,772. The Local Chapter was established in 1925. In 1926 the Chapter moved into the historic Blair House. Three years later the Chapter moved into the house that it now occupies in Sorority Court.

Pledge fee: \$10.00, including pledge pin.

Pledge dues: 75c per month.

Initiation fee: \$65.00, includes badge, life subscription to *Arrow*, *Pi Beta Phi Directory*, local dues for one year and national dues for four years.

Active dues: \$36.00 per year after the first year. No national dues.

Description of badge: Gold Arrow.

Members

Class of 1942:

Virginia Baker Doepke, Eleanor Ely, Louise Dubose Gordon, Sena Lucile Jennings, Theodosia S. Kelcey, Virginia Anna Lyons, Natalie Nichols,* Marion Anne Pate, Edith Grinnell Rathbun, Virginia Beverly Sims, Ethel Virginia Teal.

Class of 1943:

Barbara H. Cooper, Evelyn L. Cosby, Elizabeth Ann Douglass, Jacqueline Fowlkes, Mary C. Hamner, Jean Garland Jordan, Elizabeth Lyon, Jane Taylor.

Class of 1944:

Carolyn Geneva Brooks, Marjorie Deborah Davis, Elaine McDowell, Jeanne Fleur McHugh, Katharine Ann Ribal, Mary Ann Swensen, Mary Virginia ZuCal.

Asterisk (*) indicates president.

Pledges:

Isabel Woodward Bethea, '42, Madeline Jean Handy, '44, Janice Audrey Hendricks, '44, Jean Watkins Horgan, '44, Patricia H. Howard, '44, Dorothy Jean Landon, '44, Marion Elizabeth Leach, '44, Margaret Ann Webb, '43.

PHI MU

Gamma Alpha Chapter

Established 1926

Phi Mu is the second oldest secret organization for women in America. It was founded at Wesleyan College, Macon, Georgia, in 1852, by three Wesleyan students. At first it was called Philomathean, but in 1904 the name of the organization was changed to Phi Mu. In 1911 Phi Mu became a member of National Panhellenic Congress, and now has sixty-three chapters all over the country. The local chapter of Phi Mu was installed at the College of William and Mary in 1926.

Pledge fee: \$10.00, including pledge pin.

Pledge dues: \$1.50 per month.

Initiation fee: \$55.00, including badge, subscription to *Aglai*a, all other publications.

Active dues: Local, \$3.25 per month.
National, \$8.00 per year.

Description of badge: Shield of black enamel and gold displaying hand clasping heart and Greek letters.

Members

Class of 1942:

Eleanor Jane Brooks, Marjorie E. Hopkins, Eleanor L. Nottingham, Margaret Propst, Jean Dorothy Reiff, Ann Hicks Seward, Tabb Taylor.*

Class of 1943:

Jean Margaret Benham, Mary Jo Hundley, Lulu Anne Nottingham.

Class of 1944:

Jane Weaver Bendall, Floria Bradley Hall, Eleanor Stran Haupt, Dorothy Jane Nelson, Betty Jean Niederlander, Eleanor Marie Payne, Loise Frances Weiss, Jean Audrey Wilder, Mary Elizabeth Wood.

Asterisk (*) indicates president.

Pledges:

Mary Elizabeth Bitzer, '44, Eleanor Allen Bond, '44, Annie Virginia Bruce, '42, Virginia Gertrude Croxton, '43, Marilyn E. Humphrey, '44, Barbara Blair Ruhl, '44, Mary G. Scott, 44, Alice W. Stirewalt, '44, Barbara Doris Widmer, '44.

ALPHA CHI OMEGA

Beta Delta Chapter

Established 1927

Alpha Chi Omega is one of the oldest of the national women's fraternities. It was founded by a group of students at the School of Music at DePauw University in Greencastle, Indiana, in 1885. The lyre was chosen as the official badge because of its musical significance and has since been voted the most beautiful fraternity pin in a contest held by the National Panhellenic Association. Today Alpha Chi Omega has chapters throughout the United States and in Canada, with a total of 63 active chapters, 49 alumnae chapters, and 78 alumnae clubs. Alpha Chi Omega offers financial assistance in the form of scholarship funds and loans.

The local chapter was originally the Alpha Beta Chi local sorority, and was admitted to membership as Beta Delta chapter in 1927, and occupied the first woman's fraternity house on the campus before moving into sorority court.

Pledge fee: \$10.00, including pledge pin and pledge book.

Pledge dues: \$2.50 per month.

Initiation fee: \$50.00 including badge, subscription to *Lyre*, all books.

Active dues: \$4.00 per month, plus \$5.00 per year for house fee.

Description of badge: Gold Greek Lyre, jewelled.

Members

Class of 1942:

Doris Berg-Johnsen, Annette Jane Carter, Virginia Ann Fitz Hugh, Eleanor R. Graham, Jane Kirkpatrick, Lucy M. McClure,* Mary Margaret Polatty, Jeanne Louise Reindollar, Dorothy Jean Ross, Elizabeth Ann Smith, Mary Arther Triplett, Jean A. Weigand.

Asterisk (*) indicates president.

Class of 1943:

Jane R. Christiansen, Jane Thompson Craig, Doris Ruth Freer, Emilia Marie Garcia, Elizabeth Harris, Almera Estelle Hicks, Hilda Mason Lynn, Aline Fay Mims, Kathryne Jeanne Stigall.

Class of 1944:

Janet Howerton Brooks, Martha S. Eddy, Viola May Gompf, Barbara Jane Gray, Ruth Higgins, Doris Emma Mears, Jeanne Audrey Mencke, Marilyn M. Miller, Hazel Dorsey Riggs, Emily Jane Snyder, Mildred R. Talmadge, Gloria Hoover Tyler.

Pledges:

Ruth Eleanor Dumper, '44, Anne Teresa Mahoney, '44, Sara Jane Snyder, '44, Mary Elizabeth Thomson, '44.

KAPPA DELTA

Alpha Pi Chapter

Established 1928

Kappa Delta was founded at Farmville State Teachers College, Farmville, Virginia, October 23, 1897. In the comparatively short period of its growth, Kappa Delta has become the fifth largest National Panhellenic Sorority and is the only sorority to have been admitted to the Panhellenic Council on the first petition. It has sixty-eight active chapters throughout the United States and one hundred and eleven alumnae associations. The Alpha Pi Chapter at William and Mary received its charter in 1928 from the National Council of Kappa Delta after having functioned as a local chapter for several years.

Among Kappa Delta's outstanding members are Pearl Buck the Nobel Prize Winner in 1938-39; Helene Claire of dramatic fame; Georgia O'Keefe, the painter; and Hildegard Fillmore, fashion editor of *McCall's Magazine*.

Pledge fee: \$15.00, including pledge pin.

Pledge dues: \$2.25 per month.

Initiation fee: \$40.00, including badge, national dues one year, life subscription to *Angelos*, membership certificate, song book, and payment on house note.

Active dues: Local, \$3.75 per month.

National, \$5.00 per year.

Description of badge: Diamond-shaped with black center.

Members

Class of 1942:

Jane Alden,* Alice Ruth Black, Mae Brown Ervin, Dorothy L. Hogshire, Mary Turner Morgan, Mary Leola Prince, Frances D. Rudasill, Doris Smith, Nancy Webster Trice, Virginia Alice Tripp, Dorothy Roberta Vogel, Julia Lewis Wright.

Asterisk (*) indicates president.

Class of 1943:

Miriam Guthrie Boone, Mavis Mercer Bunch, Jane Jordan Enberg, Elizabeth Anne Fisher, Mary Jean Goodson, Carolyn Margaret Harley, Carrie Virginia Humphries, Marion Aleen Jardine, Anna Korn, Evelyn Grace Miller, Dorothy H. Rickes, Martha Mitchell Snow.

Class of 1944:

Ruth Virginia Murphy, Frances G. Pendleton, Ann Scarlett Pettigrew, Mary Florence Pettigrew, Norma Lee Smith.

Pledges:

M. Elizabeth Darragh, '44, Violet Reed Hargroves, '44, Mary Rebecca Koehler, '44, Betty Baker Mitchell, '44, Gloria Jet Morgan, '44, Louise Ann Musante, '44, Billy Winston Snead, '44, Prudence Ann Triem, '44.

DELTA DELTA DELTA

Alpha Mu Chapter

Established 1928

Delta Delta Delta was founded at Boston University, Thanksgiving Eve, 1888. Since then it has grown until today there are eighty-eight active chapters and one hundred and thirty-five alumnae organizations in the United States and Canada. Tri Delta was one of the six fraternities participating in the organization of the first Panhellenic Council in 1891.

Alpha Mu Chapter at the College of William and Mary was chartered in 1928. In the previous year a local fraternity, Delta Chi Delta, was organized by Alice Claibourne, a Tri Delta pledge from Sewanee, for the express purpose of petitioning Tri Delta for a charter. Before installation of the Chapter took place Alice Claibourne died. In memory of her the charter members presented to the Chapter a diamond pin which has been handed down to successive presidents.

Tri Delta is well represented in activities at William and Mary.

Pledge fee: \$10.00, including pledge pin.

Pledge dues: 50c per month.

Initiation fee: \$55.00, including badge, subscription to *Trident*.

Active dues: Local, \$3.00 per month.

National, \$9.00 per year.

Description of badge: Gold crescent with three pearl stars.

Members

Class of 1942:

Arlie Virginia Alexander, Margaret Lee Alexander, Constance Rabetau Curtis, Virginia Ruth Gould,* Constance Elizabeth Reed, Frances Virginia Sterne.

Class of 1943:

Elizabeth Jayne Costenbader, Jean Grant Geiselmann, Phyllis Virginia Hantz, Helen St. Julien Marshall, Helen Corinne Myers, Mary Lucille Peavy, Anne Dobie Peebles, Mary Louise Taylor.

Asterisk (*) indicates president.

Class of 1944:

Kathryn Vernon Brown, Jean Casterton Bulette, Georgianna DeShong, Margaret Ellen Horn, Nancy Anne Morrow, Gladys Clifton Wallace.

Pledges:

Barbara M. Bothwell, '44, Gloria Jean Brush, '44, Marion Jean Commery, '44, Luella A. Fitzgerald, '44, Helen Foster, '43, Barbara Pogue, '43, Mary Jane Riddick, '44, Phyllis Virginia Reid, '43, Janet Weaver, '44.

GAMMA PHI BETA

Alpha Chi Chapter

Established 1933

The Gamma Phi Beta Sorority was founded November 11, 1874, at Syracuse University by four young women who met in the study of a Professor Brown, in whose honor the colors of double brown were adopted. Today the sorority has forty-five active chapters and twenty-seven alumnae associations in the United States and Canada.

Gamma Phi Beta actively engaged in social service work during and after the World War. The Sorority maintains camps for underprivileged children in Colorado and Vancouver, Canada.

Alpha Chi Chapter was installed at the College of William and Mary September 11, 1933.

Pledge fee: \$15.00, including pledge pin.

Pledge dues: Decided by pledges.

Initiation fee: \$50.00, including life subscription to *Crescent*, life alumnae membership.

Active dues: \$5.00 per month.

Description of badge: Monogram of three letters enclosed in a crescent.

Members

Class of 1942:

Margaret Buell Allen, Elizabeth Irene Beck, Mary Ruth Black, Elizabeth Louise Bull, Margaret Adelia Eaton, Phyllis Anne Hile,* Virginia Ann Longino, Sarah Elizabeth Moore, Lois Jacqueline Phillips, Sally Bet Walker, Audrey Lee Wallace.

Class of 1943:

Helen Hunter Black, Dorothy Marion Bunn, Helen Louise Holbrook, Margaret L. McSweeney, Genevieve D. Rile, Suzanne C. Zihlman.

Class of 1944:

Barbara G. Burbank, Marian Lois Heiden, Marjorie E. Henderson, Margaret R. Moore, Virginia L. Southworth, Mary Edna Trumbo.

Asterisk (*) indicates president.

Pledges:

Harriett P. Holland, Betty Carter Howell, Jean Elizabeth Parker, Shirley Ann Schellenberg.

Officers of Administration



President—JOHN STEWART BRYAN, 101 Marshall-Wythe Hall.

Dean of the Faculty—JAMES W. MILLER, 112 Marshall-Wythe Hall.

Dean of Men—J. WILFRED LAMBERT, 112 Marshall-Wythe Hall.

Dean of Women—GRACE WARREN LANDRUM, 112 Marshall-Wythe Hall.

Assistant Dean of Men—JOHN E. HOCUTT, 111 Marshall-Wythe Hall.

Assistant Dean of Women—MARGUERITE WYNNE-ROBERTS, Barrett Hall.

Registrar—KATHLEEN ALSOP, 116 Marshall-Wythe Hall.

Bursar—CHARLES J. DUKE, JR., 101 Marshall-Wythe Hall.

Auditor—VERNON L. NUNN, 102 Marshall-Wythe Hall.

Librarian—E. G. SWEM, Library.

College Physician—B. I. BELL, M. D., First Floor, the David J. King Infirmary.

Nurses—MISS RUTH MORECOCK, MISS FLORA DALRYMPLE.

Executive Secretary of the Alumni Association—CHARLES P. MCCURDY, JR., Brafferton Kitchen.

Director of Public Relations—THOMAS PINCKNEY, President's House Kitchen.

Faculty



- ALSOP, KATHLEEN. *Asst. Prof. of Secretarial Science and Registrar.* Office, 116 Marshall-Wythe Hall; Residence, Faculty Apartments.
- ARMACOST, GEORGE H. *Asso. Prof. of Education.* Office, 211 Washington Hall; Residence, Powell Street; Telephone 116-J-11.
- ARMSTRONG, ALFRED. *Asst. Prof. of Chemistry.* Office, 207 Rogers Hall; Residence, Newport Avenue; Telephone 213-W.
- ASH, ROY P. *Asst. Prof. of Biology.* Office, 105 Washington Hall; Telephone 675-W; Residence, Pollard Park; Telephone 213-J.
- BARKSDALE, MARTHA. *Asso. Prof. of Physical Education.* Office, Jefferson Gymnasium; Telephone 548; Residence 616 Blair Avenue, College Terrace; Telephone 235-W.
- BEUTEL, F. K. *Prof. of Jurisprudence.* Office, 217 Marshall-Wythe Hall; Residence, Indian Springs; Telephone 664.
- BLANK, GRACE. *Asst. Prof. of Biology.* Office, 110 Washington Hall; Residence, 134 Chandler Court; Telephone 135-R.
- BLOCKER, D. J. *Prof. of Sociology.* Office, 307 Marshall-Wythe Hall; Residence, 719 Richmond Road; Telephone 164.
- BORISH, M. E. *Asso. Prof. of English.* Office, 207 Washington Hall; Residence, Indian Springs; Telephone 316-J.
- BOTTKOL, J. MCG. *Asst. Prof. of English.* Office, 303 College; Residence 153 Richmond Road.
- BROWN, GEORGE W. *Lecturer in Clinical Psychology.* Office, Eastern State Hospital; Telephone 21; Residence, Francis Street; Telephone 256.

- BRYAN, JOHN STEWART. *President*. Office, 101 Marshall-Wythe Hall; Residence, President's House; Telephone 30.
- CALKINS, ELEANOR. *Instructor in Mathematics*. Office, 201 Washington Hall; Residence, 121 Chandler Court; Telephone 159.
- CARPER, MARVIN L. *Instructor in Education*. Office, 211 Washington Hall; Residence, Newport Avenue; Telephone 446-J.
- CARTER, J. D. *Asso. Prof. of French*. Office, 309 Washington Hall; Residence, Griffin Avenue; Telephone 130-M.
- CHANDLER, JOSEPH C. *Asso. Prof. of Physical Education*. Office, Blow Gymnasium; Residence, Magruder Heights; Telephone 204-W.
- CLARK, G. GLENWOOD. *Asso. Prof. of English*. Office, 209 Washington Hall; Residence, 110 North Boundary Street; Telephone 182-M.
- COGAR, JAMES L. *Lecturer in History*. Office, Goodwin Building; Telephone 330; Residence, York Street; Telephone 482.
- COREY, HIBBERT D. *Asso. Prof. of Economics*. Office, 215 Marshall-Wythe Hall; Residence, Capitol Landing Road; Telephone 123-J.
- COX, THEODORE S. *Prof. of Law and Police; Dean of the Department of Jurisprudence*. Office, 312 Marshall-Wythe Hall; Residence, Jamestown Road at Chandler Court; Telephone 7.
- CUMMINGS, LILLIAN A. *Prof. of Home Economics*. Office, 307 Washington Hall; Residence, 427 Scotland Street; Telephone 378-J.
- DAVIS, D. W. *Prof. of Biology*. Office, 109 Washington Hall; Telephone 675-W; Residence, 349 W. Scotland Street; Telephone 242-M.
- DELISLE, ALBERT L. *Asst. Prof. of Biology*. Office, 113 Washington Hall; Residence, Palace Green.

- DOUGHTY, LLOYD A. *Instructor in Fine Arts.* Office, Fine Arts Building; Telephone 367-J; Residence, Prince George Street; Telephone 368-W.
- DOUSÉ, RAMON. *Asst. Prof. of Music.* Office, Music Building; Residence, 616 West Prince George Street; Telephone 293-M.
- DUKE, CHARLES J., JR. *Bursar.* Office, 101 Marshall-Wythe Hall.
- EMBREE, ROYAL. *Asst. Prof. of Psychology and Director of Counseling.*
- FELKER, GRACE. *Asst. Prof. of Physical Education.* Office, Jefferson Gymnasium; Residence, Pollard Park; Telephone 209-J.
- FISHER, JOHN R. *Prof. of Modern Languages.* Office, 315 Washington Hall; Residence, Indian Springs.
- FOLTIN, EDGAR M. *Professor of Jurisprudence.* Office, 313 Marshall-Wythe Hall; Residence, Matoaka Court.
- FOWLER, HAROLD L. *Asso. Prof. of History.* Office, 207 Marshall-Wythe Hall; Residence, Pollard Park; Telephone 169-W.
- GALLAGHER, RICHARD. *Instructor in Physical Education.* Office, Blow Gymnasium; Residence, Newport News Road; Telephone, 395-J.
- GIBBS, WAYNE F. *Prof. of Accountancy.* Office, 304 Marshall-Wythe Hall; Residence, 606 Blair Avenue, College Terrace; Telephone 173-J.
- GRAHAM, MAE. *Asst. Prof. of Library Science.* Office, Library; Residence, Chandler Court; Telephone 486-W.
- GREGORY, CHAS. D. *Asso. Prof. of Mathematics.* Office, 314 Rogers Hall; Residence, 708 Richmond Road; Telephone 257-W.
- GUY, W. G. *Prof. of Chemistry.* Office, 202 Rogers Hall; Residence, Pollard Park; Telephone 213-J.
- HALL, EMILY M. *Instructor in English.* Office, 209 Washington Hall; Residence, 432 W. Scotland Street; Telephone 57.

- HARRISON, CHARLES T. *Prof. of English.* Office, 207 Washington Hall; Residence, Indian Springs; Telephone 692-J.
- HARVEY, ANDREW EDWARD. *Asso. Prof. of Modern Languages.* Office, 315 Washington Hall; Residence, 704 Blair Avenue, College Terrace; Telephone 573-J.
- HASEROT, FRANCES S. *Asst. Prof. of Philosophy.* Office, 205 Washington Hall; Residence, Jamestown Road; Telephone 441-J.
- HELSETH, INGA OLLA. *Prof. of Elementary Education.* Office, 211 Washington Hall; Residence, 119 Chandler Court; Telephone 53-W.
- HENNEMAN, R. H. *Asst. Prof. of Psychology.* Office, 315 College; Residence, Richmond Road; Telephone 275-W.
- HOCUTT, JOHN E. *Instructor in Chemistry and Asst. Dean of Men.* Office, 111 Marshall-Wythe Hall; Residence, Faculty Apartments.
- HOFFMAN, WALTER E. *Instructor in Jurisprudence.* Office, 313 Marshall-Wythe Hall; 608 Seaboard Bank Building, Norfolk, Va.; Telephone, Norfolk 27055.
- HOKE, K. J. *Prof. of Education and Dean of the Summer School.* Office, 112 Marshall-Wythe Hall; Residence, Jamestown Road; Telephone 144.
- HUNT, ALTHEA. *Asso. Prof. of English and Director of Dramatics.* Office, Wren Kitchen; Residence, Faculty Apartments.
- ITURRALDE, VICTOR. *Asso. Prof. of Modern Languages.* Office, 311 Washington Hall; Residence, 702 Blair Avenue, College Terrace; Telephone 375-J.
- JACKSON, J. H. *Prof. of English.* Office, 208 Washington Hall; Residence, Little Neck O'Land Farm, Jamestown Road; Telephone 441-W.
- JOHNSON, J. R. L. *Prof. of English.* Office, 215 Washington Hall; Residence, 134 Jamestown Road; Telephone 268-W.

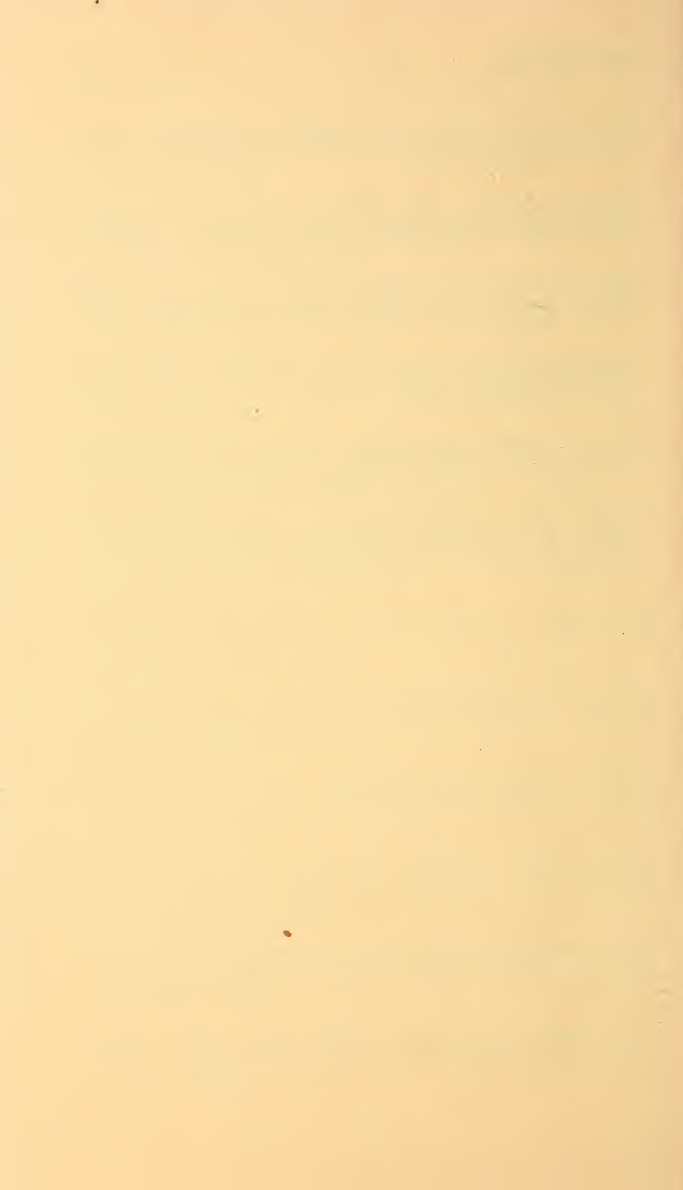
- JONES, L. TUCKER. *Prof. of Physical Education.* Office, Jefferson Gymnasium; Telephone 548; Residence, Jamestown Road; Telephone 287-M.
- JONES, WILLIAM MELVILLE. *Asso. Prof. of English.* Office, 207 Washington Hall; Residence, 119 Armistead Avenue; Telephone 556-J.
- KESSLER, ESTHER. *Instructor in Secretarial Science.* Office, 307 Rogers Hall; Residence, 129 Richmond Road; Telephone 206-J.
- LAING, LIONEL H. *Asst. Prof. of Government.* Office, 316 Marshall-Wythe Hall; Residence, Chandler Court; Telephone 237-W.
- LAMBERT, J. WILFRED. *Asst. Prof. of Psychology and Dean of Men.* Office, 112 Marshall-Wythe Hall; Residence, Griffin Avenue at Hairpin Road; Telephone 568-M.
- LAND, ROBERT HUNT. *Instructor in History.* Office, Library; Residence, Pollard Park; Telephone 225-W.
- LANDRUM, GRACE WARREN. *Prof. of English and Dean of Women.* Office, 112 Marshall-Wythe Hall; Residence, Griffin Avenue; Telephone 126-J.
- LEWIS, JOHN LATANE, JR. *Instructor in Jurisprudence and Law Librarian.* Office, Law Library; Residence, Griffin Avenue; Telephone 696-M.
- MCCARY, B. C. *Asso. Prof. of French.* Office, 309 Washington Hall; Residence, 614 Richmond Road; Telephone 666-W.
- MCCRAY, R. N. *Instructor in Physical Education.* Office, Blow Gymnasium; Residence, Prince George Street; Telephone 663-J.
- MCCULLY, BRUCE. *Instructor in History.* Office, 207 Marshall-Wythe Hall; Residence, Griffin Avenue.
- MCDIARMID, ORVILLE J. *Asst. Prof. of Economics and Business Administration.* Residence, 201 N. Henry Street.

- MARSH, C. F. *Prof. of Economics.* Office, 204 Marshall-Wythe Hall; Residence, Powell Street; Telephone 170-W.
- MASSEI, BEVERLY. *Instructor in Modern Languages.* Office, 315 Washington Hall; Residence, Faculty Apartments.
- MEIKLEJOHN, DONALD. *Asso. Prof. of Philosophy.* Office, 205 Washington Hall; Residence, Chandler Court; Telephone 559.
- MERRYMON, WILLIAM WALTER. *Asso. Prof. of Physics.* Office, 113 Rogers Hall; Residence, 714 Blair Avenue, College Terrace; Telephone 235-R.
- MILLER, JAMES W. *Prof. of Philosophy and Dean of the Faculty.* Office, 112 Marshall-Wythe Hall; Residence, Indian Springs; Telephone 692-W.
- MORALES, CECIL R. *Asst. Prof. of Modern Languages.* Office, 311 Washington Hall; Residence, 704 Blair Avenue, College Terrace; Telephone 573-J.
- MORTON, RICHARD LEE. *Prof. of History.* Office, 212 Marshall-Wythe Hall; Residence, 116 Chandler Court; Telephone 163.
- MOSS, WARNER. *Prof. of Government.* Office, 319 Marshall-Wythe Hall; Residence, Powell Street; Telephone 116-W-11.
- NEIMAN, FRASER. *Instructor in English.* Office, 301 College; Residence, 704 Blair Avenue, College Terrace; Telephone 573-W.
- NEWCOMBE, CURTIS L. *Asso. Prof. of Biology.* Office, 109 Washington Hall; Telephone 675-W; Residence, 322 Scotland Street; Telephone 242-R.
- NUNN, VERNON L. *Auditor.* Office, 102 Marshall-Wythe Hall; Residence, 225 Richmond Road; Telephone 693-J.
- PARQUETTE, JEANNE. *Instructor in Physical Education.* Office, Jefferson Gymnasium; Residence, Pollard Park; Telephone 209-J.

- PATE, J. E. *Prof. of Political Science.* Office, 318 Marshall-Wythe Hall; Residence, Jamestown Road; Telephone 195-M.
- PHALEN, H. R. *Asso. Prof. of Mathematics.* Office, 201 Washington Hall; Residence, Griffin Avenue; Telephone 126-M.
- PINCKNEY, THOMAS. *Director of Public Relations and Instructor in Latin.* Office, President's Kitchen; Telephone 550; Residence, Semple House, East Francis Street; Telephone 364-R.
- RICHARDSON, W. R. *Asst. Prof. of English.* Office, 312 College; Residence, 127 Richmond Road.
- ROBB, R. G. *Prof. of Organic Chemistry.* Office, 306 Rogers Hall; Residence, 134 Chandler Court; Telephone 135-R.
- ROSS, ARTHUR H. *Instructor in Fine Arts.* Office, Fine Arts Building; Telephone 367-J; Residence, Taliaferro Hall.
- RUST, EDWIN C. *Asso. Prof. of Fine Arts.* Office, Fine Arts Building; Telephone 367-J; Residence, Semple House Kitchen, East Francis Street; Telephone 364-M.
- RYAN, GEORGE J. *Asso. Prof. of Ancient Languages.* Office, 308 Washington Hall; Residence, Jamestown Road.
- RYLAND, ARCHIE GARNETT. *Prof. of French.* Office, 315 Washington Hall; Residence, 331 E. Francis Street; Telephone 470.
- SLY, ALLAN B. *Asso. Prof. of Music.* Office, Music Building; Residence, Richmond Road; Telephone 172-J.
- SOUTHWORTH, S. D. *Prof. of Economics.* Office, 204 Marshall-Wythe Hall; Residence, Burns Lane and Powell Street; Telephone 307-W.
- STETSON, J. M. *Prof. of Mathematics.* Office, 201 Washington Hall; Residence, 232 Jamestown Road; Telephone 316-W.

- STEWART, JEAN J. *Asso. Prof. of Home Economics.* Office, 307 Washington Hall; Residence, Pollard Park; Telephone 135-W.
- STONE, CHARLES H. *Asst. Librarian and Prof. of Library Science.* Office, Library; Residence, 610 Prince George Street; Telephone 65-R.
- STUBBS, T. J., JR. *Asso. Prof. of History.* Office, 213 Marshall-Wythe Hall; Residence, 131 Chandler Court; Telephone 130-R.
- STUESSY, DWIGHT T. *Instructor in Physical Education.* Office, Blow Gymnasium; Residence, 404 S. England Street; Telephone 168.
- SWEM, E. G. *Librarian.* Office, Library; Residence, 119 Chandler Court; Telephone 53-W.
- TAYLOR, A. G. *Prof. of Economics and Asst. Dean of the Marshall-Wythe School of Government and Citizenship.* Office, 218 Marshall-Wythe Hall; Residence, Powell Street; Telephone 170-J.
- TAYLOR, R. L. *Asso. Prof. of Biology.* Office, 102 Washington Hall; Residence, Burns Lane and Powell Street; Telephone 195-R.
- THORNE, THOMAS. *Instructor in Fine Arts.* Office, Fine Arts Building; Telephone 367-J; Residence, Pollard Park; Telephone 287-R.
- UMBECK, SHARVY G. *Asst. Prof. of Sociology.* Office, 307 Marshall-Wythe Hall; Residence, Matoaka Court; Telephone 147-J.
- VOYLES, CARL M. *Director of Athletics.* Office, Blow Gymnasium; Telephone 55; Residence, 431 Scotland Street; Telephone 445.
- WAGENER, A. PELZER. *Prof. of Ancient Languages.* Office, 305 Washington Hall; Residence, Jamestown Road; Telephone 177-R.
- WEEKS, HELEN FOSS. *Prof. of Education.* Office, 212 Washington Hall; Residence, 616 Blair Avenue; Telephone 173-W.

- WERNER, A. H. *Instructor in Physical Education.* Office, Blow Gymnasium; Residence, 207 Nelson Avenue; Telephone 481-J.
- WILKIN, ALMA. *Asst. Prof. of Home Economics.* Office, 302 Washington Hall; Residence, Practice House, 197 Armistead Avenue; Telephone 556-W.
- WOOD, CARLTON L. *Asst. Prof. of Government and Economics.* Office, 318 Marshall-Wythe Hall; Residence, Indigo Farm, Route 5.
- WOODBIDGE, D. W. *Prof. of Jurisprudence.* Office, 315 Marshall-Wythe Hall; Residence, 118 Griffin Avenue; Telephone 139-J.
- WYNNE-ROBERTS, MARGUERITE. *Asst. Dean of Women.* Office, Barrett Hall, Telephone 208; Residence, 454 E. Duke of Gloucester Street, Telephone 193.
- YOUNG, R. C. *Prof. of Physics.* Office, 117 Rogers Hall; Telephone 276; Residence, Jamestown Road; Telephone 274.



College Telephone Numbers



*ADMINISTRATION BUILDING -----	300
ALPHA CHI OMEGA HOUSE -----	8-J
ALUMNI ASSOCIATION OFFICE -----	269
ASSISTANT DEAN OF WOMEN, MISS MARGUERITE WYNNE-ROBERTS -----	208
ATHLETIC ASSOCIATION (BLOW GYMNASIUM) -----	55
BARRETT HALL -----	784
BROWN HALL -----	787
BROWN HALL ANNEX -----	752
CHANDLER HALL -----	780
CHANDLER HALL HOSTESS -----	157-J
CHI OMEGA HOUSE -----	174
COLLEGE INFIRMARY -----	156
DELTA DELTA DELTA HOUSE -----	472
DINING HALL (OFFICE) -----	114
DINING HALL (PAY) -----	760
DIRECTOR OF PUBLIC RELATIONS -----	550
FINE ARTS DEPARTMENT -----	367-J
GAMMA PHI BETA HOUSE -----	266
JEFFERSON HALL -----	766
KAPPA ALPHA HOUSE -----	299
KAPPA ALPHA THETA HOUSE -----	473
KAPPA DELTA HOUSE -----	155
KAPPA KAPPA GAMMA HOUSE -----	474
LAMBDA CHI ALPHA HOUSE -----	560-R
MONROE HALL -----	777
MONROE HALL HOSTESS -----	578
MORRIS HOUSE -----	751
OLD DOMINION HALL -----	765
PHI ALPHA HOUSE -----	273
PHI KAPPA TAU HOUSE -----	279
PHI MU HOUSE -----	492
PI BETA PHI HOUSE -----	82
PI LAMBDA PHI HOUSE -----	75-W
POWER PLANT -----	303
SIGMA ALPHA EPSILON HOUSE -----	372-M
SIGMA PI HOUSE -----	776
SIGMA RHO HOUSE -----	690
THETA DELTA CHI HOUSE -----	391
WOMEN'S PHYS. ED. DEPARTMENT (JEFFERSON GYMNASIUM) -----	548

*Switchboard connecting office of the President, Bursar, Auditor, Registrar, Deans, Library, Placement Bureau, Sir Christopher Wren Building, and the Power Plant.

