

William and Mary Women's Tennis



Candice Fuchs



Nina Kamp



Kari Olsen

2002-03 William and Mary Women's Tennis

William and Mary Quick Facts

The College

Location Williamsburg, Virginia
 Founded 1693
 Enrollment 5,560
 President Timothy J. Sullivan
 Athletics Director Terry Driscoll
 Associate Athletics Director Barbara Blosser
 Nickname Tribe
 Colors Green, Gold and Silver

Women's Tennis Information

Head Coach Brian Kalbas (Notre Dame, 1989
 Kalbas at William and Mary 189-79 (.705) (10 seasons)
 Assistant Coach Kord Schwarz (Wheaton, 1997)
 Kalbas' Phone (757) 221-3384
 Kalbas' E-mail bjkalb@wm.edu
 Schwarz' Phone (757) 221-7374
 2002 Record 19-8
 2002 CAA Record 3-0, 1st Place, Tournament Champions
 2002-03 Captain Kari Olsen (2003)

Sports Information

Associate SID/Tennis Contact Dan Wakely
 Address PO Box 399, Williamsburg, VA 23187
 Wakely's Phone (757) 221-3368
 Wakely's E-mail ddwake@wm.edu
 Sports Information Fax (757) 221-3412
 Web site www.TribeAthletics.com



Media Information

The William and Mary sports information office is always interested in assisting members of the media in their coverage of Tribe women's tennis. Publicity and media information for William and Mary women's tennis are coordinated by associate sports information director **Dan Wakely**.

Photographs, feature ideas and results are always available from the William and Mary sports information office. For information and interviews call Wakely at **(757) 221-3368**, e-mail him at ddwake@wm.edu or visit the official W&M web site at www.TribeAthletics.com.

Table of Contents

Quick Facts	IFC
William and Mary	1
Tribe Athletics	2
Season Outlook	3
Head Coach Brian Kalbas	4
Asst. Coach Kord Schwarz	5
Millie West	5
Nina Kamp	6
Kari Olsen	7
Kelli Partlow	8
Kate Boomershine	8
Candice Fuchs	9
Melissa Reed	9
Lena Sherbakov	10
Amy Wei	10
Megan Muth	11
Lingda Yang	11
Roster	11
2001-02 Review	12
W&M in the Postseason	13
Honors and Awards	14
Records	15
Student-Athlete Support	16
Facilities	IBC
2003 Schedule	BC

TOP STORIES

www.TribeAthletics.com
 THE OFFICIAL SITE OF WILLIAM & MARY ATHLETICS

MEN'S SPORTS	WOMEN'S SPORTS
Baseball	Basketball
Basketball	Cross Country
Cross Country	Field Hockey
Football	Golf
Golf	Gymnastics
Gymnastics	Lacrosse
Soccer	Soccer
Swimming & Diving	Swimming & Diving
Tennis	Tennis
Track & Field	Track & Field
	Volleyball

Staff Directory • Facilities • Tribe Club • Sports Medicine • About W&M Athletics • Ticket Office

Live Audio • Email Hotline • Links & News

Tribe fans can follow all of the action of the 2002-03 season on the Internet at www.TribeAthletics.com.

The web site features the latest athletics news, press releases, pictures, stats and feature stories.

Credits: The 2002-03 William and Mary Women's Tennis Media Guide is a publication of the William and Mary sports information office. Layout, design and writing by associate sports information director Dan Wakely. Editing by the sports information office. Photography by Pete Clawson, Lawrence l'Anson, David Kenas, Bob Keroack, Colby Loucks, Lisa Purdy, Logan Wallace, Julie Warner and the William and Mary Publications Office. Printing by Colonial Printing of Richmond, Virginia

William and Mary

For more than 300 years, the College of William and Mary has been a symbol of academic distinction in America. Now in its fourth century, the College is prepared to educate the leaders of the 21st century.

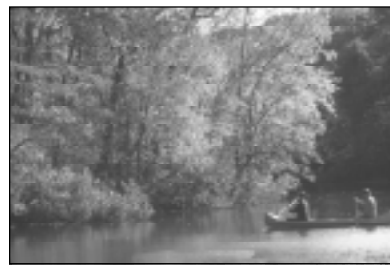
The College of William and Mary was chartered February 8, 1693, by King William III and Queen Mary II of England to bring education to a growing number of British colonists and Christianity to the Native Americans. Today, William and Mary is a public, four-year, co-educational residential university, with a nationally recognized liberal arts program. Although it has retained the college name in its title, William and Mary is now a modern university.

Many of America's early leaders were educated at William and Mary, including U.S. Presidents Thomas Jefferson, James Monroe and John Tyler, and renowned U.S. Chief Justice John Marshall. George Washington served as the college's first American chancellor from 1788 until his death in 1799.

William and Mary students founded Phi Beta Kappa, the premier academic honor society in America, in 1776. The College was the first to offer elective courses and to use the honor code system of conduct. The first chair of law in America was established at William and Mary in 1779. In addition, the College awarded the first degree in law in 1793.

The College's historic campus includes the Sir Christopher Wren Building (1695), the oldest college building in the nation where classes are still conducted. This and other 18th-century structures of William and Mary were restored to their original appearance through grants from philanthropist John D. Rockefeller during the restoration of Colonial Williamsburg in the late 1920s.

Although polls, rankings and guidebooks cannot fully capture the character of any educational institution, they do provide useful indications of the quality that students can expect. For years, the academic excellence of the College of William and Mary has been widely recognized by the growing raft of magazines and guidebooks that annually rank American colleges and universities. From *U.S. News and World Report* to *The Princeton Review*, William and Mary and



its programs are listed among the nation's strongest.

U. S. News and World Report (2002)

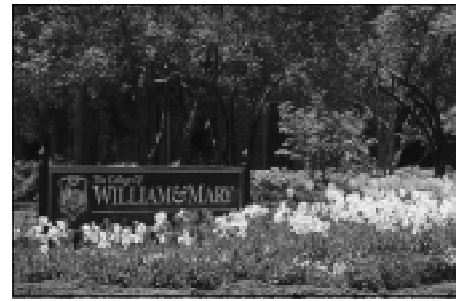
- W&M ranked sixth among all public universities
- W&M ranked 33rd among national universities that offer the best value
- W&M ranked 30th overall among the nation's best universities
- W&M ranked 17th in graduation rates for national universities

Fiske Guide to Colleges (2002)

- W&M given the highest rating of academics - five stars
- W&M designated a "Best Buy" because of its combination of quality and cost
- A junior reported to *Fiske* of the professors: "We are being led and constantly motivated by passionate people."
- "The W&M formula of blending the old and the new has been working for more than 300 years, and it's only getting better with age."

Princeton Review: Best 331 Colleges (2002)

- W&M is "a small public university with a big reputation ... one of the best and most competitive public schools in the nation."
- W&M "admission is ultra-competitive", comparable to such institutions of higher education as Yale, Stanford, Duke, Georgetown and Harvard.
- W&M offers an "excellent location and a down-to-earth attitude ... Its students are certainly aware of this traditional liberal arts college's strengths and express them with intelligence and ease: 'William and Mary is an undiscovered gem', writes one student."



Did You Know That:

- William and Mary ranks first among American public universities in terms of commitment to undergraduate teaching, according to *U.S. News and World Report*. It is also the highest ranked small public university in the country.
- William and Mary is one of only eight U.S. institutions of higher education designated a "Public Ivy." A Public Ivy is a state-assisted institution, which offers a superior education at a cost far below that of Ivy League schools.
- A recent study shows that only William and Mary and Stanford University reported student-athlete SAT scores of at least 1,000 in eight categories based on gender and sport.
- More than 90 percent of all undergraduate courses are taught by full-time faculty.
- W&M's 12-1 student-faculty ratio is among the lowest of national public universities.
- The Campus is located approximately 150 miles south of Washington, D.C., midway between Norfolk and Richmond, Virginia.
- There are 7,560 students enrolled in the College (5,560 are undergraduates) who populate a 1,200 acres scenic campus setting that includes picturesque Lake Matoaka and the College Woods.



Tribe Athletics

Over the last 300 years, William and Mary has developed a sterling national reputation for its academic standard of success. And for the last century, the Tribe athletics program has been working just as diligently to maintain its position as one of the top athletics departments in the nation ...

When the College's stringent academic standards are taken into consideration, the accomplishments of W&M's athletic programs are even more amazing. Over 500 student-athletes participate in 23 intercollegiate sports, and last year, those teams won over 57 percent of their competitions en route to a combined record of 205-154-2.

The 2001-02 athletic year was a typically strong one for the Tribe. Five Colonial Athletic Association titles, one East Coast Athletic Conference championship, a share of the Atlantic 10 football crown and a first place showing at the USA Collegiate Gymnastics meet are examples of William and Mary's strong season.

The women's tennis team captured its 16th CAA Championship, while the women's soccer squad qualified for the NCAA Tournament for the 10th straight season. Perennial powerhouses like the cross country and track and field squads didn't disappoint, either, challenging for conference titles yet again in 2001.

The success isn't limited to just those programs. The volleyball and men's gymnastics teams earned their first berths in NCAA postseason action, while the men's golf team earned a bid to the NCAA East Regional, showing that improvement is occurring across the board.

Since the merger of the men's and women's athletics departments in 1986, William and Mary has seen more than its fair share of success on and off the field. With graduates of the program running major corporations or running down the opposition in a National Football League game, a degree from W&M has proven to be a stepping-stone to a successful future.

William and Mary fields Division I teams for both men and women in basketball, cross country, golf, gymnastics, soc-

WILLIAM AND MARY ATHLETICS MISSION STATEMENT:

"To provide academically qualified student-athletes with the best qualitative and quantitative athletic experience within the available resources."



While at W&M, Lauren Nikolaus was a three-time CAA Player of the Year, earned six All-America honors and was named National Senior Player of the Year.

cer, swimming and diving, tennis, and indoor and outdoor track and field. There are also field hockey, lacrosse and volleyball squads for women at the College, while there are two additional sports (baseball and football) for men.

Continuity is emphasized in the W&M athletics department. As the shaded box below shows, William and Mary has a history of stability with its head coaches. The current head coaches at W&M have been with the program for an average of 12.5 years. This retention rate leads to better performances on the field and a better overall experience for the student-athlete.

From the administration to the training staff to the coaches, the Tribe sports family is committed to providing each student-athlete at the College with the best possible experience, both academically and athletically, for his or her collegiate career.

Nine W&M head coaches have been in their current positions for 15 or more years: Al Albert - men's soccer (31 years), Cliff Gauthier - men's gymnastics (29 years),

hockey (15 years), John Sauer - strength and conditioning (15 years)

Tribe

WILLIAM AND MARY ATHLETICS BY THE NUMBERS

- 225 - Combined years of coaching experience with the Tribe by all current head coaches
- 205 - Wins by W&M teams in 2001-02
- 134 - Conference, state or regional championships won by W&M teams since 1983-84
- 130 - Athletes named to all-conference squads (CAA, ECAC, Atlantic 10) in 2000-01
- 110 - Academic All-Americans in the last 21 seasons
- 65 - Number of NCAA appearances by William and Mary teams since 1987-88
- 40 - Percent of William and Mary's Rhodes Scholars who have been athletes
- 7 - Tribe sports teams that qualified for NCAA postseason action in 2001-02
- 6 - Coach of the Year awards won by Tribe coaches in 2001-02
- 5 - William and Mary athletes who have earned their sport's National Player of the Year award since 1995
- 2 - Tribe squads that earned their first NCAA tournament appearances in 2001-02 (volleyball, men's gymnastics)
- 1 - The College's rank among all CAA schools in terms of number of conference titles captured, as W&M's count of 67 championships cannot be matched.



Debbie Hill - volleyball (25 years), Jimmye Laycock - football (22 years)

John Daly - women's soccer (15 years), Dan Stimson - director of track and field (16 years), Pat Van Rossum - women's cross country (16 years), Peel Hawthorne - field

2002-03 Outlook

In 2002 William and Mary's women's tennis team proved that the disappointing 2001 season was an aberration, as the Tribe bounced back to win its 16th Colonial Athletic Association championship in 17 seasons and advanced to the NCAA Tournament for the 11th time overall, making its seventh appearance in the last eight years. The College also earned its 12th No. 1 East Region Ranking, ending the season 18th in the nation. Three singles players and two doubles teams earned all-conference recognition and for the fourth time a W&M player was named the league's rookie of the year. Tribe head coach **Brian Kalbas** was named CAA and ITA East Region Coach of the Year, the fourth time he has earned each honor.

Looking to lead the Tribe to its 17th CAA title this season will be a solid corps of three seniors. **Kari Olsen** has grown into a team leader during her time at the College and, last spring, her teammates voted her as the captain for the 2002-03 campaign. She leads all returning players with 113 wins (46 singles, 67 doubles) and last season earned All-CAA honors in doubles. One of the hardest workers on the team, she has consistently elevated her game throughout her career.

One of the Tribe's top players as a sophomore, **Nina Kamp** spent much of last year recovering from shoulder surgery, but is expected to return to form this year. An extremely tough competitor, her commitment to rehabilitation and strength training should help propel her back into the starting lineup.

Rounding out the senior class is **Kelli Partlow**. One of the team's top students in the classroom, she has continued to mature as a player and worked very hard to improve her game and elevate her position in the lineup.

Following the lead of the seniors will be a group of very talented underclassmen. Four sophomores, who combined for three all-conference accolades, are back and Kalbas has also brought three newcomers to the team.

Topping the list of young players is **Candice Fuchs**. Last year's CAA Rookie of the Year, Fuchs also earned first team all-league honors in singles and doubles, finished the season nationally ranked and participated in the NCAA postseason doubles tournament. Her participation in the NCAAs gave her a

taste of her potential for collegiate success and she has worked very hard over the summer to ensure that she maximize her abilities.

Sophomore **Lena Sherbakov** was a consistent player in the middle of the lineup last year, leading the team with 24 singles victories. She began her career with an outstanding fall and made a



Last season's CAA Rookie of the Year, Candice Fuchs

smooth transition from high school to college competition. One of the key components to the team's success, it will be important for her to use her experience from last year to help elevate her game.

A second team All-CAA pick in doubles, **Amy Wei** came on strong in the spring, with an 18-7 singles record, including wins in nine of her last 10 matches. As she continued to gain confidence throughout the spring, she helped spark the team to success, not only with her achievements on the court, but also with her consistently positive attitude.

Melissa Reed saw limited action last season, but was a key part of the team's achievements. With an outstanding attitude and work ethic, it is essential for her to continue to compete and push, or even pass, those ahead of her in the lineup.

A sophomore transfer from Illinois,

Kate Boomershine was initially recruited by Kalbas out of high school and will be eligible to play three years at W&M. As a freshman last season she played in the middle of the Illini lineup and compiled 12 singles wins and eight doubles victories. With terrific natural ability, she is capable of being an outstanding college player.

One of the Tribe's two freshmen, **Megan Muth** has already demonstrated the ability to play at the college level with big wins in ITA Indoor Summer Circuit singles and doubles competitions. Strong mental toughness and extreme maturity on the court have combined to put her game at a very high level.

Freshman **Lingda Yang** also has significant experience on the national scene and has been nationally ranked her entire career. Another very hard worker, she will need to draw on her experience and earlier success to adapt her game to the college level.

Kalbas and first-year assistant **Kord Schwarz** have set some lofty, but achievable, goals for the team this year: win the CAA Championship for the 17th time and advance to the round-of-16 at the NCAA Tournament.

"To do that it will be important for each member of the team to strive to be No. 1," explains Kalbas. "We need everyone to want to play as high as possible in the lineup.

"We have a very young team [seven freshmen and sophomores and just three seniors], so everyone will have to be a leader and show maturity. Conditioning in the fall will be a major factor, as will individual workouts both on and off the court."

As is the case every season, Kalbas has put together a very difficult schedule. Opening the fall at home with one of the largest and most competitive women's tournaments in the country, the W&M Invitational involves close to 100 competitors from nine nationally-ranked teams. In the spring season the Tribe's schedule features 15 teams that ended 2002 nationally-ranked and five that finished in the top 10. W&M will take road trips to defending national champion Stanford, No. 8 Wake Forest and No. 10 Texas, and will host fifth-ranked North Carolina and No. 9 Arizona State.

Head Coach Brian Kalbas



Brian Kalbas
Notre Dame (1989)

Kalbas' Coaching Philosophy

"I've always been one who works extremely hard while never being satisfied with mediocrity. Whatever I'm doing (if it's playing or coaching), I'm putting forth 100% physically and mentally. This attitude has convinced me that a quality work ethic really pays off in the end.

"What I look for in a potential student-athlete is an individual who is hard-working, competitive, goal- and team-oriented and one who will accept challenges and grow from the experiences. I don't look for a particular style of player and I don't coach everyone the same. I look for the competitor who has the skills to grow and develop into a complete tennis player. The coaching staff at William and Mary is extremely active in organizing and preparing the student-athletes for competition. We structure a diverse conditioning program and implement a weight workout. Foremost, the opportunity to develop playing skills on a one-on-one basis is always available."

Head Coach Brian Kalbas, last season's CAA and ITA East Region Women's Tennis Coach of the Year, is entering his 11th season at W&M where he has posted an excellent career mark of 189-79. Under Kalbas' tutelage, Tribe individuals have been represented in the NCAA Championships in nine of his 10 years, highlighted with All-America performances by Lauren Nikolaus in singles in 1996, 1997 and 1998 and in doubles by Nikolaus and Michelle O in 1998, Nikolaus and Johanna Sones in 1997, Katrin Guenther and Nikolaus in 1995 and Karen van der Merwe and Guenther in 1993.

During Kalbas' 10-year tenure, the Tribe has also produced the top-ranked doubles tandem in the East Region seven times, including last season when Jessyca Arthur and Candice Fuchs were ranked No. 1. Kalbas was named the 1998 ITA National Coach of the Year and he was also honored with the CAA Coach of the Year award for the 1995, 1996, 1999 and 2002 campaigns. He received the Regional Coach of the Year award for the 1995, 1998, 1999 and 2002 seasons. In 1998, he coached Nikolaus to the ITA National Senior Player of the Year award and the Gladys Heldman Award.

Not only a superb developer of tennis playing ability, Kalbas has a reputation for developing exceptional tennis coaches as well. His first two assistants, Brian Fleishman and Tyler Thomson each earned ITA East Region Assistant Coach of the Year honors and have gone on to become head coaches at top college programs. Fleishman is currently at Wake Forest and was named ITA National Coach of the Year in 2002, while Thomson is beginning his second season at the University of Minnesota. A pair of recent W&M players, Tari Ann Toro and Michelle O are currently assistant coaches at Miami (FL) and Loyola Marymount, respectively.

Prior to his arrival at W&M, Kalbas spent three years as the assistant men's tennis coach at the University of Notre Dame. He helped the Fighting Irish, which had never before been ranked, climb into the nation's top-20. The Irish were finalists at the 1992 NCAA Championships and finished with an ITCA ranking of No. 3.

Kalbas has personally coached Dave Dilucia, an All-America selection and a current pro player. He has also managed and directed summer tennis camps for the last five years, including the Nike Tennis Camp at



Brian Kalbas with senior captain Kari Olsen.

William and Mary.

A four-year varsity player at Notre Dame, where he earned a bachelor's degree in marketing, Kalbas played No. 1 or No. 2 most of his career. He served as captain his senior year and received the Most Valuable Player and the Sportsmanship awards. Kalbas continued his play on the professional circuit, recording wins over several top players including Todd Martin, a semifinalist at the 2000 US Open, and Royce Deppe, an All-American from Texas. Kalbas resides in Williamsburg with wife, Suzanne, daughter, Sarah, and son, Joseph.

Kalbas at William and Mary

1992-93	13-6	.684
1993-94	17-7	.708
1994-95	23-6	.793
1995-96	20-8	.714
1996-97	23-7	.767
1997-98	23-9	.719
1998-99	21-7	.750
1999-00	20-9	.690
2000-01	10-12	.455
2001-02	19-8	.704
Career	189-79	.705

CAA Championships

1993, 1994, 1995, 1996, 1997, 1998, 1999, 2000, 2002

CAA Coach of the Year

1995, 1996, 1999, 2002

East Region Coach of the Year

1995, 1998, 1999, 2002

National Coach of the Year

1998

Assistant Coach Kord Schwarz/Millie West



Kord Schwarz
Wheaton (1997)

This year Kord Schwarz begins his first season as the assistant women's tennis coach at William and Mary.

A 1997 graduate of Wheaton College, Schwarz was a psychology major with a minor in sociology. Playing at the No. 1 position all four years, he was an All-American his senior season, having achieved a top-16 national ranking. He also competed on Wheaton's soccer and ski teams and was involved in numerous community service activities.

Schwarz comes to William and Mary from Kenyon College, where he served as the assistant men's and women's tennis coach. Last season, both the men and the women advanced to the NCAA Tournament and were nationally-ranked 12th and ninth, respectively. The men won the North Coast Atlantic Conference title, while the women finished second.

After graduating from Wheaton, Schwarz competed on the international satellite tour. He also served as the adult tennis coordinator for Topnotch at Stowe Resort and Spa, currently the fourth-ranked tennis resort in the country.

My goal is to hire somebody who wants to be a head coach and Kord has all the ingredients to successfully lead his own program. He has an outgoing personality, is a very hard worker and is an outstanding tennis player. I am very excited to have him on the team."

— W&M Head Coach Brian Kalbas

In Appreciation - Millie West



The women's tennis team and its coaching staff would like to thank Millie West for her contributions to the Tribe tennis program. As the Director of Special Projects at William and Mary, West was instrumental in making the McCormack-Nagelsen Tennis Center a reality. In addition, she rallied for the Intercollegiate Tennis Association's Women's Tennis Hall of Fame to be housed at the McCormack-Nagelsen Tennis Center.

An integral part of W&M athletics for more than 40 years, West served as Women's Athletics Director and Associate Athletics Director prior to her role as Director of Special Projects. During her tenure at W&M, she also held various coaching positions, including a 13-year stint as head women's tennis coach. In April

1995 her 1978-79 squad was inducted into the W&M Athletics Hall of Fame for achievements that include a third-place showing at the AIAW Small College Nationals. In November 2002 she will be inducted into the Mid-Atlantic Tennis Association Hall of Fame.

The past, present and future of W&M women's tennis is truly indebted to Millie West for her dedication and contributions. She has given us the tradition and avenue for the success of our program.



Millie West was instrumental in bringing the ITA Women's Tennis Hall of Fame to Williamsburg.

Nina Kamp



Nina Kamp
5-6 • Senior
Pine Brook, NJ
Newark Academy

Ask Nina ...

Someday I would like to take a trip to ...
Australia

Biggest sports thrill in my life to date ...
Beating Duke in 2000

TV show I would like to appear on ...
Friends

When I was growing up I pretended to be ...
an astronaut

Favorite sports hero growing up ...
Pete Sampras

If I could spend one day with anyone it would be ...
Jerry Seinfeld

Favorite ice cream flavor ...
cookies and cream

2001-02: Battled injuries throughout the season and was limited to nine singles and one doubles match ... Scored W&M's only point against UNLV with a 6-4, 6-2 singles win over Marianne Bakken ... Also won singles matches against Richmond, Old Dominion, Drexel (in the CAA Tournament) and Virginia Tech ... Won her only doubles match of the year, teaming up with Kelli Partlow for a win in the CAA Tournament against Drexel.

2000-01: Followed up a strong freshman season with an equally impressive sophomore campaign, leading the team in total (51) singles (26) and doubles (25) victories ... Final ITA East Region ranking of #23 in singles ... After losing her first singles match in the fall, she ran off a streak of 12-straight victories, winning her flight championships in the Maryland and Wake Forest Invitationals ... Went 11-3 against the CAA in the regular season (5-2 singles and 6-1 doubles) ... Also had a strong fall doubles record (10-4), and (with Kari Olsen) won the second flight title match of the Maryland Invitational ... The pair were undefeated (4-0) in spring dual matches ... Went 3-0 with Carlijn Buis in spring doubles including winning both of their matches in the CAA Tournament ... Recipient of the team's Best Attitude Award.

1999-00: Won the first singles match of her college career, defeating Amanda Hastings-Phillips (Princeton), 6-3, 6-4 at the William and Mary Invitational September 18 ... Reached the finals of her flight at the University of Maryland Invitational ... Did not drop a set in her seven singles matches in Colonial Athletic Association dual match competition, including two matches in the conference tournament ... Spring singles record of 10-4 ... Her first career doubles win came with Elizabeth O against Peller/Pierko (Marshall), 9-7, September 25 ... Combined with Olsen for a 9-1 record at doubles ... The two reached the finals of their flights at the Lady Gamecock Fall Classic and the Tribe Classic ... Recorded a 5-1 doubles record with Buis in the spring ... With a 22-6 doubles



record, ranks tied for 10th on W&M's freshman doubles wins list and has the fifth-best winning percentage (.786) for a freshman in school history.

High School: Played four years of No. 1 singles under coach Arky Crook ... Named team's most valuable player in 1997 and 1999 ... Earned school's Mark Adest Award in 1998 ... First player at high school to play at No. 1 singles all four years ... ETA Sportsmanship Award in 1994 ... Nationally-ranked 40th in 18-and-unders.

Personal: Full name is Nina Jennifer Kamp ... Daughter of Willi and Karin Kamp ... Born October 10, 1980 in Weinheim, Germany ... Enjoys playing soccer and basketball, skiing, working with kids and listening to music ... Majoring in international relations with a minor in math.

Kamp's Career Statistics

	Singles	Doubles
1999-00	17-13 (.567)	22-6 (.786)
2000-01	26-25 (.510)	25-12 (.676)
2001-02	5-4 (.556)	1-0 (1.000)
Career	48-42 (.533)	48-18 (.727)

Kari Olsen



Kari Olsen
5-6 • Senior
San Diego, CA
Torrey Pines

Ask Kari ...

Craziest ambition ...
sky diving

Favorite surface to play on ...
clay

Typical breakfast ...
oatmeal

Someday I would like to take a trip to ...
Norway

Favorite sports hero growing up ...
Steffi Graf

Favorite comedian ...
Jay Leno

Top sporting event seen in person ...
Acura Classic in San Diego

Best thing about playing a college sport ...
road trips

Elected team captain for the 2002-03 season.

2001-02: Earned second team All-CAA honors with Amy Wei in doubles ... The pair finished the season as the East Region's 13th-ranked doubles team ... Won seven-straight singles matches at the beginning of the spring season ... Included in that stretch was a three-set win in W&M's one-point victory over VCU ... Recorded 27 doubles wins, second-best on the team ... 24 of those wins came with Wei, the most wins for a doubles team on the year ... Won the 50th doubles match of her career as she and Wei defeated Nicole Ptak/Katherine Williams (Pennsylvania) on January 20 ... The pair won five-straight in the fall and opened the spring season winning 15 of their first 17 matches ... Narrowly missed upsetting #T60 Jessica Johnson/Ashley Kroh (Marshall), losing 8-9 (5).

2000-01: Perfect 12-0 record (6-0 singles and 6-0 doubles) against the CAA in the regular dual match season ... Started off the spring season strong, winning her first seven singles matches ... Her 25th career singles victory came against Courtney Zalinski (North Carolina) at the Carolina Indoor Invitational, January 13 ... With Lindsay Sullivan won her 25th career doubles match, defeating Karen Chao/Annie Goodrich (Rice), 8-4, at the Wake Forest Invitational, October 15 ... Won the final round of her flights' backdraw at the William and Mary Invitational and the Tribe Classic ... With Nina Kamp won the second flight title match of the Maryland Invitational ... The pair were undefeated (4-0) in spring dual matches ... Won the top flight consolation finals with Sullivan at the Wake Forest Invitational ... Recipient of the team's Most Improved Player Award.

1999-00: First career singles win came against teammate Elizabeth O (6-2, 5-7, 6-0) in the William and Mary Invitational September 19 ... Her first doubles victory was an 8-4 decision with Sullivan against Monika Peetes/Janelle Williams (Richmond), also in the W&M Invitational September 17 ... Perfect in spring singles action (4-0) ... Won the finals of her singles flight at the Lady Game-

cock Fall Classic ... Reached the finals of the University of Maryland Invitational, falling to teammate Kelli Partlow ... Won the only singles match she played in the CAA Tournament ... Teamed up with Kamp for a 9-1 doubles record (including a perfect 4-0 in the fall) ... Their only loss was a tiebreaker in the second flight finals of the Tribe Classic.

High School: Played four years at No. 1 singles and doubles under coach Ann Meigs ... Rookie of the Year ... Most Valuable Player Award senior season ... CIF High School singles and doubles champion ... National Honor Society.

Personal: Full name is Kari Anne Olsen ... Born January 20, 1981 in San Diego, California ... Daughter of Bernt and Suzanne Olsen ... Older sister, Kirsten, played No. 1 singles at UC San Diego ... Majoring in government and Spanish ... Plans to attend graduate school and become a teacher ... Studied in Guadalajara for two weeks ... Enjoys reading, going to the beach and traveling.



Olsen's Career Statistics

	Singles	Doubles
1999-00	15-5 (.750)	17-7 (.708)
2000-01	19-14 (.576)	23-11 (.676)
2001-02	12-10 (.545)	27-12 (.692)
Career	46-29 (.613)	67-30 (.691)

Kelli Partlow/Kate Boomershine



Kelli Partlow
5-9 • Senior
Winchester, VA
John Handley

2001-02: Recorded dual match doubles wins with Kari Olsen (against James Madison) and with Nina Kamp (in the CAA Tournament against Drexel).

2000-01: Perfect 8-0 record against the CAA in the spring (4-0 singles and 4-0 doubles) ... Spring dual match wins against George Mason, Richmond, UNC Wilmington and East Carolina ... Helped the Tribe to advance in the CAA Tournament by teaming up with Jessyca Arthur to defeat Christy Michaux/Liz Simon (James Madison), 8-0, in the semifinals ... Won five doubles contests with Nina Kamp in the spring, including matches against nationally-ranked Southern California and Mississippi.

1999-00: Won the first singles match of her career, defeating Arizona's Siri Fansgaard, 6-2, 6-1, in the William and Mary Invitational September 18 ... Also won her first collegiate doubles match, teaming with Elizabeth O to defeat Mareno/Taylor (Arizona), 8-5, in the quarterfinal round of the W&M Invitational September 17 ... Had the best singles winning percentage on the team (.824, 14-3) ... Won the singles finals of her flights at the Maryland Invitational and the Tribe Classic ... With O compiled a 4-1 dual match doubles record, all against CAA opponents.

High School: Four years of tennis under coaches Skip Redondo and Jim Kasser ... Team won state championship in 1997 ... Sophomore year state doubles champion ... Also played one year of volleyball and two of basketball ... Na-

tional Honor Society.

Personal: Full name is Kelli Lynn Partlow ... Born November 17, 1980 in Winchester, Virginia ... Daughter of Jerry Partlow and Kathye Partlow ... Brothers Michael and Brian played football at William and Mary ... Majoring in finance with a minor in philosophy ... Monroe Scholar.



Partlow's Career Statistics

	Singles	Doubles
1999-00	14-3 (.824)	7-2 (.700)
2000-01	5-12 (.294)	9-10 (.474)
2001-02	0-3 (.000)	2-1 (.667)
Career	19-18 (.514)	18-14 (.563)



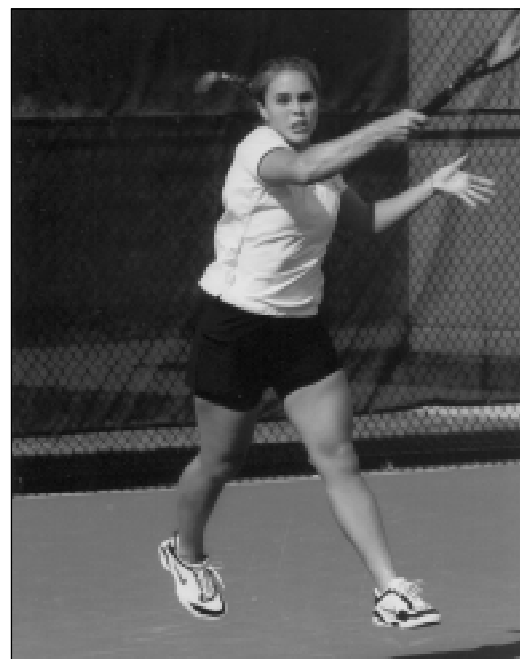
Kate Boomershine
5-4 • Sophomore
Glenwood, MD
Glenelg

Won ITA summer circuit doubles event held at William and Mary with current Tribe classmate Candice Fuchs.

2001-02 (Illinois): Won 12 singles matches, playing predominantly at the four and five spots in the lineup ... Won two matches at the Hurricane Invitational ... Lost a close three-set match to 82nd-ranked singles opponent ... Won two doubles matches with Jennifer McGaffigan in the consolation round of the ITA Midwest Regionals.

High School: Played just her freshman year of high school tennis ... Was named South Jersey Player of the Year and was selected to the all-state first team ... Also set school record for most matches won in a single season ... Made the honor roll throughout high school career.

Personal: Full name is Kate Irene Boomershine ... Born May 30, 1983 in Mt. Laurel, New Jersey ... Daughter of David and Melinda Boomershine ... Plans to major in business ... Enjoys playing sports and running.



Boomershine's Career Statistics

	Singles	Doubles
2001-02	11-16 (.407)	8-17 (.320)

Candice Fuchs/Melissa Reed



Candice Fuchs
5-7 • Sophomore
Sarasota, FL
Pendleton

2001-02: CAA Rookie of the Year ... Also received first team all-league honors in both singles and doubles ... Ended the season nationally ranked 91st in singles and 23rd in doubles (with Jessyca Arthur) ... She and Arthur were the top-ranked doubles team in the region and she was the No. 10 singles player in the East ... The pair were selected to compete in the NCAA Doubles Tournament ... Her 21-6 (.778) doubles record is the sixth-best rookie mark in school history ... Won the first singles match of her career on January 12, defeating Michelle DeCosta (Michigan) at the Tribe Classic, 7-6 (4), 7-6 (5) ... Also won her first career doubles match on the same day, as she and Arthur defeated Rebecca Ho/Megan Marton (Penn State), 8-4 ... Opened her career with 7-0 records in both singles and doubles ... Recorded wins over four ranked singles opponents, including #55 Lia Jackson (Northwestern) in the fifth match of her career ... Defeated seven ranked doubles teams with Arthur, including two in the top-25 ... All but one of their losses were to opponents ranked 18th or better at the end of the year.

High School: Ranked as high as #5 in the USTA 18 and under rankings ... Ranked #400 in the world by the WTA with three wins over top 100 opponents ... Played in the qualifying round of the US Open ... Runner-up at 2000 USTA 18 and under national championships ... Won the USTA National Girls 16 Indoor singles title in 1998 ... Member of the San Diego Tennis Hall of Fame ... Represented the U.S. in the World Junior Tennis competition (the equivalent to the Fed Cup) in doubles in 1996 ... Won the Easter Bowl Singles Championships in Girls 14 (1996) and Girls 16 (1998), as an unseeded player ... Ranked #1

in 16 and under United States juniors ... 1999 Southern California Player of the Year.

Personal: Full name is Candice Michelle Fuchs ... Daughter of Axel and Stacy Fuchs ... Uncle John played football at the Naval Academy ... Has future goal of representing the U.S. in the Olympic Games ... Enjoys playing baseball and going to movies ... Born March 31, 1982 in Poway, California.



Fuchs' Career Statistics

	Singles	Doubles
2001-02	16-6 (.727)	21-6 (.778)



Melissa Reed
5-7 • Sophomore
Wyomissing, PA
Wyomissing

2001-02: Won her first career singles match on September 22 against Brandi Washington (Pennsylvania), 6-3, 5-7, 6-4 at the W&M Invitational ... First career doubles win was on the same day with Kelly Kennedy against Kristin Roth/Monica Villarreal (Maryland), 8-2 at the W&M Invitational ... The pair won their flight of the Penn State Fall Invitational, defeating teams from Eastern Michigan and Cincinnati ... Earned team's best attitude award.

High School: Four-time letterwinner ... First team all-state in 2000 ... Second team all-state in 1998 and 1999 ... Team won PIAA State Championship in 2000 ... Team captain senior season ... Member of National Honor Society, Student Council, International Student Committee and Spanish Club.

Personal: Full name is Melissa Ann Reed ... Daughter of Clifford and Debra Reed ... Enjoys skiing, running and traveling ... Born June 14, 1983 in Wyomissing, Pennsylvania.



Reed's Career Statistics

	Singles	Doubles
2001-02	1-5 (.167)	3-3 (.500)

Lena Sherbakov/Amy Wei



Lena Sherbakov
5-5 • Sophomore
Mountain View, CA
Los Altos

2001-02: Led W&M with 24 singles wins ... Won the first singles match of her career, defeating #68 Sanela Kunovac (Pennsylvania), 4-6, 6-1, 6-3 at the W&M Invitational on September 21 ... Won the top singles flight at the Penn State Fall Invitational, defeating #84 Rebecca Ho (Penn State), 6-4, 6-3 ... Opened the spring season winning nine of her first 10 singles contests ... Won her singles matches in the CAA semifinals (against James Madison) and the championship (against Virginia Commonwealth) ... Recorded the Tribe's only point against Duke, defeating Ioana Plesu, 6-4, 3-6, 1-0 (7) ... Her first career doubles win came with Jessyca Arthur against Megan Marton/Leigh Ann Merryman (Penn State), 8-3, at the Penn State Fall Invitational on October 13 ... Won doubles matches with Angela Buergis against Wake Forest and Miami.

High School: Team MVP for three years (1998, 1999 and 2001) ... Finished third at the National Grass Court Championships ... Finished sixth at the USTA Girls 18 Super National Hard Court Championships last year ... Ranked as high as 16th nationally in the girls 18 division.

Personal: Full name is Lena Olga Sherbakov ... Daughter of Oleg and Elena Sherbakov ... Enjoys biking, volleyball, drawing and playing the guitar ... Born May 10, 1983 in Moscow, Russia.



Sherbakov's Career Statistics

	Singles	Doubles
2001-02	24-13 (.649)	10-8 (.556)



Amy Wei
5-0 • Sophomore
Marietta, GA
New Braunfels (TX)

2001-02: Won 26 doubles matches, the fourth-best total for a rookie in school history ... Second team All-CAA with Kari Olsen in doubles ... Her 23 singles wins was the second-best mark on the team ... Won her first collegiate singles match, defeating Meredith Vincent (Virginia Tech), 6-1, 6-2, at the W&M Invitational on September 21 ... Advanced to the top-flight semifinals of the Penn State Fall Invitational and the third round of the ITA East Regionals ... Among her 18 dual-match singles victories were wins against individuals from Northwestern, Wake Forest, Miami, Mississippi, Texas and Virginia Commonwealth (in the CAA final) ... Also won her match in the NCAA Tournament against Clemson ... Finished the year very strong, winning nine of her last 10 singles contests ... Teamed up with Lena Sherbakov to earn her first career doubles win, an 8-5 decision over Kristen Stubbs/Meredith Vincent (Virginia Tech) on September 21 at the W&M Invitational ... Recorded a 24-10 doubles record with Olsen as they finished the season as the East Region's 13th-ranked doubles team ... The pair won five-straight in the fall and opened the spring season winning 15 of their first 17 matches ... Narrowly missed upsetting #T60 Jessica Johnson/Ashley Kroh (Marshall), losing 8-9 (5) ... Won her 25th career doubles match in the CAA Championship on April 21, as she and Olsen defeated Jana Carollo/Christina Gago (Virginia Commonwealth) to clinch the crucial team doubles point ... Earned team's best attitude award.

High School: MVP of Walton Tennis Team as a freshman ... Ranked No. 1 in the south and as high as 19th

in the nation in girls 18s ... Involved in student government ... National Merit nominee ... Recipient of Principal's Award for most outstanding student.

Personal: Full name is Hai-Lin Wei ... Daughter of Bee Chong and Ying Lan Wei ... Sister, Tracy, a senior, was George Washington's No. 1 women's tennis player last season ... Plans to major in business ... Born June 22, 1983 in Taiwan.



Wei's Career Statistics

	Singles	Doubles
2001-02	23-11 (.676)	26-12 (.684)

Megan Muth/Lingda Yang/Roster



Megan Muth
5-4 • Freshman
Covington, LA
Covington

High School: Played high school tennis her freshman and senior years ... Both years selected as team MVP, won the state 5-A singles title and was named the best female athlete of the year in Louisiana and to the all-metro team ... Broke high school record for most career wins and was the first player to go undefeated and win two state titles ... Ranked No. 1 in south region and as high as No. 20 in girls 16s ... Participated on Louisiana Fed Cup team ... Competed on first place Southern Section team at Intersectionals ... Won singles and doubles title at Indiana's ITA Tournament in summer of 2002 ... Member of National Honor Society, Spanish Club, Beta Club and secretary of Mu Alpha Theta ... Maintained a GPA of 3.5 or higher all four years.

Personal: Daughter of Michael Muth and Sandy Tusson ... Enjoys writing, riding horses and camping. Plans to major in biology ... Born December 14, 1983 in New Orleans, Louisiana.



Lingda Yang
5-8 • Freshman
Coconut Creek, FL
Cardinal Gibbons

Cardinal Gibbons: Played three years of tennis at the No. 1 and 2 positions ... Winner of numerous junior championships, including doubles titles in the Tampa and Atlanta National Opens and the Bush Florida Open ... Three-time district, regional and state champion in both singles and doubles ... Team also won district, regional and state titles all three years ... Ranked as high as 17th in Florida and 59th in the nation in the 18 and under age group ... Ranked eighth in the nation in under-18 doubles ... 2000-01 National High School Tennis All-American ... Member of the Senior Athletic Club ... Contributed time to a number of food and clothing drives.

Personal: Daughter of Honggang Yang and Jie Shi ... Enjoys swimming, sports, running and reading ... Plans to major in biology and is interested in medicine and surgery ... Born March 9, 1984 in Harbin, China.

2002-03 Tribe Women's Tennis Roster

Name	Cl.	Hometown	High School
Kate Boomershine	So.	Glenwood, MD	Glenelg
Candice Fuchs	So.	Sarasota, FL	Pendleton
Nina Kamp	Sr.	Pine Brook, NJ	Newark Academy
Megan Muth	Fr.	Covington, LA	Covington
Kari Olsen	Sr.	San Diego, CA	Torrey Pines
Kelli Partlow	Sr.	Winchester, VA	John Handley
Melissa Reed	So.	Wyomissing, PA	Wyomissing
Lena Sherbakov	So.	Mountain View, CA	Los Altos
Amy Wei	So.	Marietta, GA	New Braunfels (TX)
Lingda Yang	Fr.	Coconut Creek, FL	Cardinal Gibbons

Pronunciation Guide

Candice Fuchs	Candice FUKES
Nina Kamp	KNEE-na Kamp
Megan Muth	MAY-gan MOOTH
Kari Olsen	CARE-ee Olsen
Lena Sherbakov	LENN-a SHIR-ba-kov
Amy Wei	Amy WAY



2001-02 Results and Highlights

2002 Schedule and Results

19-8 overall, 3-0 CAA

January

20	#36 PENNSYLVANIA	W 5-2
26	#9 NORTHWESTERN	W 6-1

February

3	TEMPLE	W 7-0
3	JAMES MADISON *	W 7-0
12	#47 VIRGINIA COMM. *	W 4-3
17	#74 RICHMOND	W 7-0
17	HAMPTON	W 7-0
20	at #10 North Carolina	L 1-6
23	#6 WAKE FOREST	L 2-4
24	#25 MIAMI (FL)	W 4-3

March

3	at #8 Arizona State	L 1-6
6	at #41 UNLV	L 1-5
9	at #42 Pepperdine	W 6-1
17	at #60 Maryland	W 5-1
23	vs. #24 South Alabama	W 5-2
24	at #25 Mississippi	W 6-1
28	#4 DUKE	L 1-6
30	PENN STATE	W 7-0

April

2	at Old Dominion *	W 4-3
4	MARSHALL	W 6-1
7	#12 TEXAS	L 3-4
13	#25 NOTRE DAME	L 2-5
<i>CAA Tournament</i>		
19	vs. Drexel	W 4-0
20	vs. James Madison	W 4-0
21	#21 VIRGINIA COMM.	W 4-3
27	VIRGINIA TECH	W 7-0

May

<i>NCAA Tournament</i>		
11	vs. #40 Clemson	L 3-4

* Colonial Athletic Association match.
Home matches in **BOLD CAPS**.

- The team finished the season ranked 18th in the nation, won its 16th CAA championship and advanced to the NCAA Tournament for the seventh time in the last eight years.
- For the eighth consecutive year the team did not lose to an unranked opponent.
- Captain Jessyca Arthur was named the regional and national recipient of the ITA/Arthur Ashe, Jr. Award. Arthur was also a Verizon Academic All-District selection.
- Coach Brian Kalbas earned his fourth ITA East Region and CAA Coach of the Year honors.
- Arthur was selected to compete at the NCAA Individual Tournament in both singles and in doubles with Candice Fuchs. Arthur finished the year ranked 67th in singles, Fuchs ended up ranked 91st and the pair were the 23rd-ranked doubles team in the country.
- Named the CAA Rookie of the Year, Fuchs headed a list of five athletes earning all-league honors. Arthur and Fuchs were both first team selections in singles and doubles.
- Four singles players and two doubles teams were ranked in the ITA East Region at the end of the season: Jessyca Arthur (7), Candice Fuchs (10), Lena Sherbakov (21), Delphine Troch (T30), Arthur/Fuchs (1) and Kari Olsen/Amy Wei (13). The team finished the year ranked first in the region.

William and Mary Wins vs. the Top-10

In the past years William and Mary has enjoyed considerable success against the top women's tennis programs in the nation. Since 1995, the year when the Tribe defeated top-ranked and defending team indoor, NCAA outdoor and ITA indoor champion Georgia in Athens (the first time the Bulldogs had lost at home in 25 consecutive matches), 14 top-10 teams have fallen to the Green and Gold.

2002	Jan. 26	#9 Northwestern	W 6-1
2000	Feb. 9	#5 Duke	W 5-4
1999	Jan. 29	#2 Duke	W 5-4
1998	Feb. 14	#4 Texas	W 5-4
	Feb. 19	#2 UCLA	W 6-3
	April 5	#10 Wake Forest	W 5-4
	May 15	#6 California	W 5-3
1997	Feb. 2	#3 Duke	W 5-4
	March 2	#6 Mississippi	W 5-4
	March 9	#7 Pepperdine	W 6-3
	May 15	#5 Georgia	W 5-0
1996	April 5	#9 Wake Forest	W 6-3
1995	Feb. 10	#7 Kansas	W 6-3
	April 11	#1 Georgia	W 5-4



Jessyca Arthur recorded upset wins in both singles and doubles in 2002 to lead W&M to a win over No. 9 Northwestern.

2001-02 Statistics

Singles

Player	Overall	Dual	Tourn.	CAA
Jessyca Arthur	18-17	12-11	6-6	1-2
Angela Buergis	12-6	12-6	0-0	0-2
Candice Fuchs	16-6	13-6	3-0	1-1
Nina Kamp	5-4	5-4	0-0	1-0
Kelly Kennedy	3-5	1-0	2-5	0-0
Kari Olsen	12-10	8-4	4-6	2-0
Kelli Partlow	0-3	0-0	0-3	0-0
Melissa Reed	1-5	0-0	1-5	0-0
Lena Sherbakov	24-13	15-10	9-3	2-1
Delphine Troch	15-13	14-8	1-5	3-0
Amy Wei	23-11	18-5	5-6	2-0
Totals	129-93	98-54	31-39	12-6

Doubles Teams

Player	Overall	Dual	Tourn.	CAA
Arthur/Buergis	2-1	2-1	0-0	0-0
Arthur/Fuchs	20-5	18-4	2-1	3-0
Arthur/Olsen	2-1	0-0	2-1	0-0
Arthur/Sherbakov	2-1	0-0	2-1	0-0
Arthur/Troch	3-3	0-0	3-3	0-0
Buergis/Fuchs	1-0	1-0	0-0	0-0
Buergis/Sherbakov	2-1	2-1	0-0	0-0
Buergis/Troch	6-7	6-7	0-0	1-1
Fuchs/Sherbakov	0-1	0-1	0-0	0-0
Kamp/Partlow	1-0	1-0	0-0	0-0
Kennedy/Partlow	0-1	0-0	0-1	0-0
Kennedy/Reed	3-3	0-0	3-3	0-0
Olsen/Partlow	1-0	1-0	0-0	1-0
Olsen/Sherbakov	0-1	0-0	0-1	0-0
Olsen/Wei	24-10	17-8	7-2	1-1
Sherbakov/Troch	5-2	5-1	0-1	0-0
Sherbakov/Wei	1-2	0-0	1-2	0-0
Troch/Wei	1-0	1-0	0-0	1-0
Totals	74-39	54-23	20-16	7-2

Doubles

Player	Overall	Dual	Tourn.	CAA
Jessyca Arthur	29-11	20-5	9-6	3-0
Angela Buergis	11-9	11-9	0-0	1-1
Candice Fuchs	21-6	19-5	2-1	3-0
Nina Kamp	1-0	1-0	0-0	0-0
Kelly Kennedy	3-4	0-0	3-4	0-0
Kari Olsen	27-12	18-8	9-4	2-1
Kelli Partlow	2-1	2-0	0-1	1-0
Melissa Reed	3-3	0-0	3-3	0-0
Lena Sherbakov	10-8	7-3	3-5	0-0
Delphine Troch	15-12	12-8	3-4	2-1
Amy Wei	26-12	18-8	8-4	2-1

Postseason

William and Mary at the NCAA Championships

William and Mary's rise to national prominence is due, at least in part, to the team's success at the NCAA Championships. Although the College had previously placed athletes in the NCAA Tournament as individuals or doubles teams, William and Mary first reached the NCAAs as a team in 1989. In the spring of 1992 the Tribe achieved its first victory at the NCAAs, defeating 15th-ranked University of Miami in the first round.

Under the guidance of head coach Brian Kalbas the squad has dominated the East Region and reached the NCAA Championships round-of-16 four of the last eight seasons.

It was during the spring of 1997 that Kalbas earned his first victory in the round-of-16 as mentor of the Tribe. His team posted a 5-0 victory over fifth-ranked Georgia to earn a trip to the quarterfinals for the first time in school history. In 1998, the Tribe again advanced to the quarterfinals as it earned a 5-3 victory over sixth-ranked California in the round-of-16.

Although William and Mary can boast of team accomplishments at the NCAA Championships, numerous individuals and doubles teams have also had success at the NCAAs. The first individual to represent the Tribe was Namratha Appa-Roa, who qualified in the singles draw in 1986. During the past

15 years, W&M has placed a member of the team in the singles draw of the NCAAs 21 times while 13 teams qualified for the doubles championship.

The Tribe saw its first NCAA All-American in 1991 when Kristine Kurth advanced to the second round. Julie Shiflet would pick up the honor in 1992 when she reached the round-of-16. Karen van der Merwe earned two of her three All-America honors in 1992 when she advanced to the round-of-16 on the singles side and teamed with Michele Mair to reach the round-of-16 on the doubles side. She added her third honor in doubles in '93 when she teamed with Katrin Guenther to reach the quarterfinals. Guenther would add another All-America honor in 1995 when she teamed with Lauren Nikolaus to reach the round-of-eight at the NCAAs. Nikolaus would add a whopping five more All-America honors to the Tribe's trophy case as she captured the award in singles in 1996, 1997 and 1998 and in doubles with Johanna Sones in 1997 and Michelle O in 1998.

In all, eight different athletes have captured 17 All-America honors for William and Mary while 23 different athletes have represented the team in 34 events at the NCAAs in either singles or doubles since 1986.

NCAA Postseason Results		
2002 Regional	#40 Clemson	L 3-4
2000 Regional	Loyola	W 5-0
	#18 Tennessee	L 3-5
1999 Regional	UMBC	W 6-0
	#T20 Fresno State	L 3-5
1998 East Regional	#53 Richmond	W 5-1
	#39 Virginia Tech	W 5-1
	#24 Virginia Commonwealth	W 5-3
1998 Championship	#6 California	W 5-3
	#4 Georgia	L 2-5
1997 East Regional	#53 Richmond	W 5-0
	#35 Brown	W 5-0
	#28 Harvard	W 5-3
1997 Championship	#5 Georgia	W 5-0
	#2 Stanford	L 0-6
1996 East Regional	Seton Hall	W 5-0
	#47 Virginia	W 5-0
	#24 Harvard	W 5-2
1996 Championship	#7 Texas	L 4-5
1995 Championship	#5 California	L 2-5
1992 Championship	#15 Miami (FL)	W 5-4
	#3 Texas	L 3-6
1991 Championship	#14 Miami (FL)	L 3-6
1990 Championship	#13 South Carolina	L 0-6
1989 Championship	#16 San Diego State	L 3-6

Colonial Athletic Association

The women's tennis team has been dominant within the CAA, winning the team championship 16 times in the last 17 years, and finishing second in the league twice. Even more impressive was its recently ended 79 match winning streak against CAA opponents, stretching from April 1984 through April 2001. In 2002 three Tribe singles and two doubles teams were named all-conference, led by Jessyca Arthur and CAA Rookie of the Year Candice Fuchs, who each received first team honors in both singles and doubles. A William and Mary player has been honored as the CAA's Player of the Year for 11 of the past 14 seasons.

CAA Women's Tennis Champions

Year	Champion	Runner-Up
2002	William and Mary	VCU
2001	Old Dominion	William and Mary
2000	William and Mary	VCU
1999	William and Mary	Richmond
1998	William and Mary	VCU
1997	William and Mary	Richmond
1996	William and Mary	VCU
1995	William and Mary	Richmond
1994	William and Mary	Richmond
1993	William and Mary	Richmond
1992	William and Mary	Richmond
1991	William and Mary	James Madison
1990	William and Mary	James Madison
1989	William and Mary	Richmond
1988	William and Mary	James Madison
1987	William and Mary	James Madison
1986	William and Mary	James Madison
1985	Richmond	William and Mary



The 2002 women's tennis team after winning its 16th CAA Championship.

Honors and Awards

Team Honors

NCAA Appearances (11)
1989, 1990, 1991, 1992, 1995,
1996, 1997, 1998, 1999, 2000, 2002

National Indoors Appearances (9)
1990, 1991, 1992, 1995, 1996,
1997, 1998, 1999, 2000

No. 1 East Region Ranking (12)
1989, 1990, 1991, 1992, 1994,
1995, 1996, 1997, 1998, 1999,
2000, 2002

CAA Championships (16)
1986, 1987, 1988, 1989, 1990,
1991, 1992, 1993, 1994, 1995,
1996, 1997, 1998, 1999, 2000,
2002

Player Awards

All-American

- 1981** Marion Gengler
Margie Waters
- 1982** Cheri Dow
Marion Gengler
Margie Waters
- 1991** Kristine Kurth (singles)
- 1992** Michele Mair (doubles)
Julie Shiflet (singles)
Karen van der Merwe (singles &
doubles)
- 1993** Katrin Guenther (doubles)
Karen van der Merwe (doubles)
- 1995** Katrin Guenther (doubles)
Lauren Nikolaus (doubles)
- 1996** Lauren Nikolaus (singles)
- 1997** Lauren Nikolaus (singles &
doubles)
Johanna Sones (doubles)
- 1998** Lauren Nikolaus (singles &
doubles)
Michelle O (doubles)

National Rookie of the Year

- 1991** Kristine Kurth

USTA Sportsmanship Award

- 1997** Lauren Nikolaus

Gladys H. Heldman Award

- 1998** Lauren Nikolaus

National ITA/Arthur Ashe, Jr. Award

- 2000** Carolijn van Rossum
2002 Jessyca Arthur



1997 CAA Rookie of the Year Carolijn van Rossum won the national ITA/Arthur Ashe Award in 2000.

National Senior Player of the Year

- 1998** Lauren Nikolaus

Regional Senior Player of the Year

- 1993** Karen van der Merwe
1997 Johanna Sones
1998 Lauren Nikolaus

Regional Sportsmanship Award

- 1992** Karen Gallego

Regional Rookie of the Year

- 1991** Kristine Kurth
1995 Lauren Nikolaus
1999 Delphine Troch

CAA Player of the Year

- 1989** Julie Kaczmarek
1990 Danielle Durak
1991 Kristine Kurth
1992 Julie Shiflet
1993 Karen van der Merwe
1995 Katrin Guenther
1996 Lauren Nikolaus
1997 Lauren Nikolaus
1998 Lauren Nikolaus
1999 Tari Ann Toro
2000 Carlijn Buis

CAA Rookie of the Year

- 1995** Lauren Nikolaus
1997 Carolijn van Rossum
1999 Delphine Troch
2002 Candice Fuchs

CAA Tournament MVP

- 1995** Katrin Guenther
1996 Johanna Sones
1997 Lauren Nikolaus
1998 Lauren Nikolaus
2000 Carlijn Buis

All-CAA

- 1985** Mimi Roche (3)
Debbie MacColl (5)
Tracy Ruoff (6)
H. Clark/M. Roche (1)
D. MacColl/T. Ruoff (2)
- 1986** Namratha Appa-Rao (1)
Mimi Roche (3)
Kathy Chronister (6)
N. Appa-Rao/K. Chronister (3)

- 1987** Namratha Appa-Rao (1)
Leslie Whipple (4)
Kirsten Caister (6)
N. Appa-Rao/K. Caister (2)
C. Mitchell/M. O'Bryan (3)

- 1988** Danielle Webster (4)
Cynthia Mitchell (5)
Kirsten Caister (6)
D. Durak/J. Kaczmarek (1)
K. Caister/D. Webster (2)

- 1989** Julie Kaczmarek (1)
Danielle Durak (2)
Kirsten Caister (3)
Danielle Webster (4)
Cynthia Mitchell (5)
Lindsay Whipple (6)
D. Durak/J. Kaczmarek (1)
C. Mitchell/D. Webster (2)
K. Caister/D. Herring (3)

- 1990** Danielle Durak (1)
Cynthia Mitchell (2)
Kirsten Caister (3)

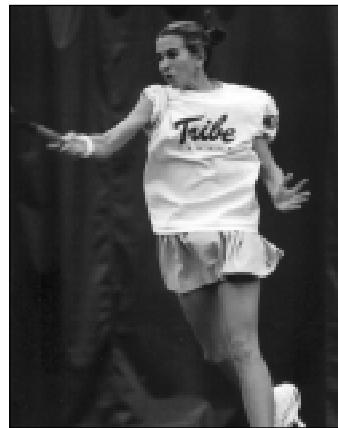
- Deb Herring (5)
Danielle Webster (6)
D. Webster/J. Wood (2)
D. Herring/C. Mitchell (3)

- 1991** Singles not played
K. Kurth/J. Wood (1)
M. Mair/K. van der Merwe (2)
K. Gallego/D. Herring (3)

- 1992** Julie Shiflet (1)
Karen van der Merwe (3)
Michele Mair (4)
Deb Herring (5)
Katrin Guenther (6)
M. Mair/K. van der Merwe (1)
K. Guenther/J. Shiflet (2)
D. Herring/K. Siegel (3)

- 1993** Karen van der Merwe (1)
Katrin Guenther (2)
Allegra Milholland (3)
Shannon Blackwell (5)
Raissa Remandaban (6)
K. Guenther/K. van der Merwe (1)
S. Blackwell/A. Milholland (2)

- 1994** Allegra Milholland (2)
Johanna Sones (3)
Megan Coakley (4)
Christine Caltoun (5)
Shawn Arrowsmith (6)
K. Guenther/A. Milholland (1)
C. Caltoun/J. Sones (2)



Four-time All-CAA selection Lindsay Sullivan won the team's Most Valuable Player award in 2001.

- 1997** Lauren Nikolaus
Michelle O
Johanna Sones
Carolijn van Rossum
L. Nikolaus/J. Sones
M. O/C. van Rossum

- 1998** Michelle O
Lauren Nikolaus
L. Nikolaus/M. O

- 1999** Carolijn van Rossum (1)
Tari Ann Toro (1)
Delphine Troch (1)
Lindsay Sullivan (2)
T. Toro/L. Tsaggaris (1)
D. Troch/C. van Rossum (1)

- 2000** Carlijn Buis (1)
Delphine Troch (1)

- Carolijn van Rossum (1)
Jessyca Arthur (2)
Lindsay Sullivan (2)
C. Buis/D. Troch (1)
J. Arthur/L. Sullivan (2)

- 2001** Delphine Troch (1)
Jessyca Arthur (2)
Lindsay Sullivan (2)
J. Arthur/D. Troch (1)

- 2002** Jessyca Arthur (1)
Candice Fuchs (1)
J. Arthur/C. Fuchs (1)
Delphine Troch (2)
K. Olsen/A. Wei (2)

Mark H. McCormack Most Valuable Player Award

- 1993** Karen van der Merwe
1994 Johanna Sones
1995 Michelle O
1996 Lauren Nikolaus
1997 Johanna Sones
1998 Michelle O
1999 Tari Ann Toro
2000 Carlijn Buis
2001 Lindsay Sullivan
2002 Jessyca Arthur

Most Improved Player Award

- 1993** Katrin Guenther and
Shannon Blackwell
1994 Megan Coakley
1995 Johanna Sones
1996 Maya Klavora
1997 Christine Caltoun
1998 Carolijn van Rossum
1999 Lindsay Sullivan
2000 Jessyca Arthur
2001 Kari Olsen
2002 Amy Wei

Best Attitude Award

- 1994** Christine Caltoun
1995 Michelle O
1996 Tari Ann Toro
1997 Carolijn van Rossum
1998 Maya Klavora
1999 Delphine Troch
2000 Kari Olsen
2001 Nina Kamp
2002 Melissa Reed

Coach Awards

National Coach of the Year
1998 Brian Kalbas

ITA East Region Coach of the Year

- 1991** Ray Reppert
1995 Brian Kalbas
1998 Brian Kalbas
1999 Brian Kalbas
2002 Brian Kalbas

ITA East Region Assistant Coach of the Year

- 1997** Brian Fleishman
1999 Tyler Thomson

CAA Coach of the Year

- 1987** Ray Reppert
1991 Ray Reppert
1992 Ray Reppert
1995 Brian Kalbas
1996 Brian Kalbas
1999 Brian Kalbas
2002 Brian Kalbas

William and Mary Records

Career Records

Singles Victories

1. Lauren Nikolaus	1994-98	137-46
2. Michelle O	1994-98	132-53
3. Johanna Sones	1993-97	117-49
Carolijn van Rossum	1996-00	117-64
5. Tari Ann Toro	1995-99	111-48
6. Lindsay Sullivan	1997-01	103-49
7. Jessyca Arthur	1998-02	95-62
Katrin Guenther	1991-95	95-47
9. Christine Caltoum	1993-97	89-45
Marion Gengler	1980-84	89-45

Singles Winning Percentage (Minimum 50 Matches)

1. Karen van der Merwe	1990-93	78-21 (.788)
2. Kirsten Caister	1986-90	84-23 (.785)
3. Karen Gallego	1989-92	55-17 (.764)
4. Lauren Nikolaus	1994-98	137-46 (.749)
5. Margie Waters	1980-82	38-15 (.717)
6. Cherie Dow	1981-83	43-17 (.717)
7. Michelle O	1994-98	132-53 (.714)
8. Danielle Durak	1986-90	82-33 (.713)
9. Michelle Mair	1990-92	37-15 (.712)
10. Johanna Sones	1993-97	117-49 (.705)

Doubles Victories

1. Johanna Sones	1993-97	107-36
2. Lauren Nikolaus	1994-98	105-36
3. Chris Mast	1978-82	102-47
4. Michelle O	1994-98	98-45
5. Tari Ann Toro	1995-99	96-27
6. Jessyca Arthur	1998-02	88-45
7. Julie Kaczmarek	1985-89	86-43
8. Katrin Guenther	1991-95	83-25
9. Kirsten Caister	1986-90	79-23
Danielle Webster	1986-90	79-37

Johanna Sones



Season Records

Singles Victories

1. Michelle O	1996-97	39-16
2. Tari Ann Toro	1998-99	37-11
Lauren Nikolaus	1997-98	37-14
Tari Ann Toro	1996-97	37-12
5. Lindsay Sullivan	1998-99	36-11
Carolijn van Rossum	1996-97	36-11
7. Lauren Nikolaus	1994-95	35-8
8. Katrin Guenther	1992-93	34-8
9. Lauren Nikolaus	1996-97	33-13
Michelle O	1995-96	33-15

Michelle O



Singles Winning Percentage (Minimum 20 Matches)

1. Julie Shiflet	1991-92	29-5 (.853)
2. Danielle Durak	1988-89	27-5 (.844)
3. Caroline Gaskin	1983-84	20-4 (.833)
4. Karen Gallego	1990-91	24-5 (.828)
Kirsten Caister	1986-87	24-5 (.828)
6. Michelle O	1994-95	28-6 (.824)
7. Karen van der Merwe	1991-92	32-7 (.821)
8. Lauren Nikolaus	1994-95	35-8 (.814)
9. Katrin Guenther	1992-93	34-8 (.810)
10. Megan Coakley	1993-94	28-7 (.800)
Kirsten Caister	1989-90	20-5 (.800)

Doubles Victories

1. Johanna Sones	1996-97	32-10
2. Lauren Nikolaus	1996-97	31-7
Katrin Guenther	1994-95	31-6
Lauren Nikolaus	1994-95	31-6
5. Tari Ann Toro	1997-98	30-9
Anne Shoemaker	1981-82	30-4
Chris Mast	1980-81	30-11
Margie Waters	1980-81	30-11
9. Jessyca Arthur	2001-02	29-10
Michelle O	1997-98	29-15

Doubles Winning Percentage (Minimum 20 Matches)

1. Anne Shoemaker	1981-82	30-4 (.882)
2. Tari Ann Toro	1996-97	24-4 (.857)
3. Kirsten Caister	1988-89	22-4 (.846)
Deb Herring	1988-89	22-4 (.846)
5. Namratha Appa-Rao	1986-87	26-5 (.839)
6. Katrin Guenther	1994-95	31-6 (.838)
Lauren Nikolaus	1994-95	31-6 (.838)
8. Kirsten Caister	1986-87	28-6 (.824)
9. Marion Gengler	1981-82	23-5 (.821)
10. Karen Dudley	1981-82	27-6 (.818)

Freshman Records

Singles Victories

1. Carolijn van Rossum	1996-97	36-11
2. Lauren Nikolaus	1994-95	35-8
3. Julie Kaczmarek	1985-86	32-11
4. Jessyca Arthur	1998-99	31-12
5. Johanna Sones	1993-94	30-8
6. Delphine Troch	1998-99	29-14
Annette Oosters	1997-98	29-14
Julie Shiflet	1991-92	29-5
9. Michelle O	1994-95	28-6
Christine Caltoum	1993-94	28-10
Megan Coakley	1993-94	28-7

Singles Winning Percentage (Minimum 20 Matches)

1. Julie Shiflet	1991-92	29-5 (.853)
2. Caroline Gaskin	1983-84	20-4 (.833)
3. Kirsten Caister	1986-87	24-5 (.828)
4. Michelle O	1994-95	28-6 (.824)
5. Lauren Nikolaus	1994-95	35-8 (.814)
6. Megan Coakley	1993-94	28-7 (.800)
7. Johanna Sones	1993-94	30-8 (.789)
8. Chris Mast	1978-79	22-6 (.786)
9. Kristen Kurth	1990-91	25-7 (.781)
10. Carolijn van Rossum	1996-97	36-11 (.766)

Doubles Victories

1. Lauren Nikolaus	1994-95	31-6
2. Kirsten Caister	1986-87	28-6
Chris Mast	1978-79	28-4
4. Amy Wei	2001-02	26-12
Karen Dudley	1980-81	26-8
Johanna Sones	1993-94	26-9
7. Danielle Webster	1986-87	25-15
8. Jessyca Arthur	1998-99	23-7
Michelle O	1994-95	23-8
10. Nina Kamp	1999-00	22-6
Delphine Troch	1998-99	22-7
Christine Caltoum	1993-94	22-11
Deb Herring	1988-89	22-4



Tari Ann Toro

Doubles Winning Percentage (Minimum 40 Matches)

1. Tari Ann Toro	1995-99	96-27 (.780)
2. Kirsten Caister	1986-90	79-23 (.775)
3. Katrin Guenther	1991-95	83-25 (.769)
4. Johanna Sones	1993-97	107-36 (.748)
5. Lauren Nikolaus	1994-98	105-36 (.745)
6. Karen Dudley	1980-84	64-22 (.744)
7. Elizabeth O	1996-00	37-13 (.740)
8. Deb Herring	1988-92	47-17 (.734)
9. Carlijn Buis	1998-01	33-12 (.733)
10. Lisa Milligan	1979-83	35-13 (.729)

Doubles Winning Percentage (Minimum 20 Matches)

1. Deb Herring	1988-89	22-4 (.846)
2. Lauren Nikolaus	1994-95	31-6 (.838)
3. Kirsten Caister	1986-87	28-6 (.824)
4. Shawn Arrowsmith	1993-94	19-5 (.792)
5. Nina Kamp	1999-00	22-6 (.786)
6. Candice Fuchs	2001-02	21-6 (.778)
7. Annette Oosters	1997-98	17-5 (.773)
8. Jessyca Arthur	1998-99	23-7 (.767)
9. Karen Dudley	1980-81	26-8 (.765)
10. Tari Ann Toro	1995-96	16-5 (.762)

Student-Athlete Support

Goals

We take pride in the many achievements of William and Mary athletes, both in the classroom and on the playing field. These support services and many others are in place to help each student-athlete achieve their goals. It is our hope that at the completion of their undergraduate career they can reflect upon:

1. An academic experience that prepared them for a successful career.
2. An athletic challenge that brought many rewards.
3. A feeling of loyalty and pride in identifying themselves as a varsity athlete with a degree from The College of William and Mary.

Compliance and Academic Support

As members of the Colonial Athletic Association and NCAA Division I, the College is committed to full compliance with all NCAA and conference regulations. The department has a full time Director of Compliance committed to assisting students, staff and coaches through education and monitoring of compliance issues.

All entering students are assigned a faculty academic advisor through the Academic Advising Office, directed by Dr. Randolph Coleman. Students remain with this advisor until they declare a major at which time they select a faculty advisor in their major field of concentration. The Academic Advising Office provides support and guidance to students as they plan their academic progress to graduation.

Within the athletic department, the Academic Support Coordinator is a valuable resource for student-athletes serving in a liaison role with the various student service offices throughout the campus community. The College has offices for Volunteer Services, Career Services, a Writing Resource Center and Oral Communication Studio, to name a few.

The department offers a variety of study, life and career building skills programs, but holds firm to the concept of self-determination—each student must take responsibility for his or her collegiate experience. Our goal is to assure that there is a support system in place to assist students to make positive and informed decisions.

Strength, Speed and Conditioning

Tribe athletics is very proud of the Joseph W. Montgomery Strength Training Center, a 5,000 square foot weight training facility. Under the guidance of the Head and Assistant Strength Coach each sport is provided with a program designed to enhance individual strength and flexibility development specific to the skills and movements required for their sport. Individuals are educated on proper lifting techniques and workouts are monitored to assure safety at all times.

Sports Psychology

The athletic department has on staff a sports psychologist, who holds a Ph.D. in sports psychology. All consultations are confidential and all student-athletes, teams or coaches are welcome regardless of the issues they wish to discuss. Consultation is available for sport psychology education, performance enhancement skills training, strategies for dealing with stress or injury, or for personal issues that may affect performance. The sports psychology consultant is considered a member of the Counseling Center and refers individuals to the Center when appropriate.



Sports Medicine

The Division of Sports Medicine provides a comprehensive health care program for the department of intercollegiate athletics. The staff consists of a team physician, six fulltime certified athletic trainers, graduate and undergraduate student trainers and medical specialists from the local community. The College is also in the process of evaluating and pursuing CAAHEP accreditation of its entry-level athletic training education program. The team physician has overall responsibility for supervision of the sports medicine program.

The priority for the athletic training staff is to enhance and assure lines of communication and cooperation among its staff, student-athletes, parents, coaches, the Student Health Center and involved medical specialists. Through a team approach to health care the sports medicine program can offer comprehensive health care services to the student-athletes in a caring and cooperative manner.

Facilities

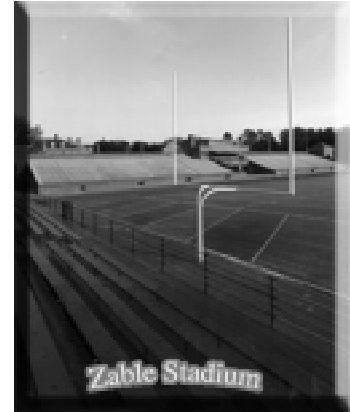
William and Mary boasts some of the finest athletic arenas in the nation, from its newest venue, Busch Tennis Courts, to the oldest, Walter J. Zable Stadium at Cary Field, a campus landmark since 1935. The College is committed to providing the student-athlete the most enjoyable and rewarding atmosphere possible.

Below are a few highlights of some of the athletic facilities that the College has to offer:

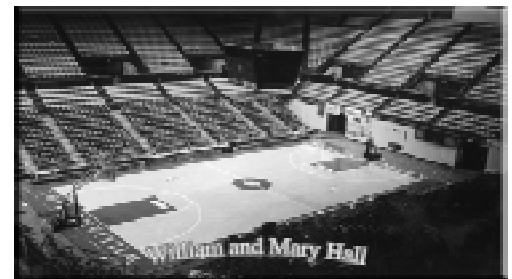


- * Home of the Tribe's tennis teams for the outdoor season
- * The College's newest venue, completed in September, 2001
- * Eight individual hard court surfaces
- * Features California Corners, a unique design that includes quarter fences that run along the sidelines to allow uninterrupted play
- * Stadium seating for approximately 500
- * State-of-the-art lighting system to accommodate night matches

- * Home of the Tribe's football and track and field teams
- * Campus landmark since 1935
- * Seating for more than 13,000
- * Eight-lane 400 meter track surrounds the field and is home to the prestigious Colonial Relays
- * Joseph Montgomery football practice facility is located adjacent to the stadium



- * Home of the Tribe's basketball, gymnastics and volleyball teams
- * Seats over 8,500
- * Three level building includes 12 locker room areas, a spacious training room, 5,000 square foot weight room and a gymnastics training center
- * The concourse and lower levels house administrative and coaching staff offices



McCormack-Nagelsen Tennis Center

Dedicated to excellence in academics and athletics, the College of William and Mary in historic Colonial Williamsburg is proud to offer one of the finest athletic facilities in the country—the McCormack-Nagelsen Tennis Center. Located on South Henry Street adjacent to the graduate housing complex, the McCormack-Nagelsen Tennis Center boasts impeccable tennis facilities and houses the Intercolle-

giate Tennis Association's Women's Tennis Hall of Fame.

The facility was made possible through a generous gift from Mark H. McCormack, a 1951 graduate of William and Mary, and his wife, world-class tennis professional Betsy Nagelsen. As the chairman, president and chief executive officer of International Management Group, McCormack is widely recognized as the founder of the sports marketing industry. The company represents such athletes as Pete Sampras and Monica Seles.

The McCormack-Nagelsen Tennis Center features six indoor tennis courts using the GreenSet GrandPrix Surface (rubberized base under color coat), air conditioning and indirect lighting at a competitive level. The facility also includes member and team locker rooms, several spacious lobbies and spectator viewing that boasts 362 stadium seats as well as a mezzanine seating area. In addition, the ITA and Rolex generously do-



The McCormack-Nagelsen Tennis Center was honored as one of the USTA's outstanding public tennis facilities.

nated a state-of-the-art electronic scoreboard.

The Intercollegiate Tennis Association's Women's Tennis Hall of Fame contains a collection of artifacts and records pertaining to collegiate women's tennis, and enshrines former players, coaches and contributors that have impacted the sport. The Hall of Fame also functions as a library, archive and research center for intercollegiate women's tennis.



Mark McCormack and his wife, Betsy Nagelsen.

2003 William and Mary Women's Tennis Schedule



Kelli Partlow



Lena Sherbakov



Amy Wel

Jan. 19	MARSHALL	9:00 AM
Jan. 19	GEORGE WASHINGTON	2:00 PM
Jan. 24	MISSISSIPPI	5:00 PM
Jan. 26	ARIZONA STATE	11:00 AM
Feb. 2	UNC WILMINGTON *	10:00 AM
Feb. 2	JAMES MADISON *	3:00 PM
Feb. 6-9	ITA National Team Indoors (Madison, WI)	
Feb. 15	NORTH CAROLINA	2:30 PM
Feb. 16	NC STATE	11:00 AM
Feb. 22	vs. Minnesota \$	11:00 AM
Feb. 23	at Wake Forest	12:00 PM
Mar. 1	at Northwestern	10:00 AM
Mar. 4	at Stanford	10:30 AM
Mar. 6	at Fresno State	10:00 AM
Mar. 16	MARYLAND	10:00 AM
Mar. 16	GEORGE MASON *	4:00 PM
Mar. 22	vs. Iowa %	10:00 AM
Mar. 23	at Notre Dame	9:00 AM
Mar. 29	AMERICAN	4:00 PM
Apr. 1	OLD DOMINION *	4:00 PM
Apr. 5	VIRGINIA TECH	11:00 AM
Apr. 6	MIAMI (FL)	12:00 PM
Apr. 9	at Virginia Commonwealth *	3:00 PM
Apr. 12	at Texas A&M	12:30 PM
Apr. 13	at Texas	11:00 AM
Apr. 17-20	CAA Tournament (Richmond, VA)	
May 9-11	NCAA Regionals (Campus Sites)	
May 15-24	NCAA Championships	

* CAA match

\$ at Wake Forest

% at Notre Dame

All times Eastern.

Home matches in **BOLD CAPS**.

This schedule is subject to change.

Please check the Internet at www.TribeAthletics.com for the most recent schedule.