

WILLIAM AND MARY WOMEN'S TENNIS

-2003-04-



2003-04 Tribe Women's Tennis

Women's Tennis Quick Facts

The College

Location Williamsburg, Virginia
 Founded 1693
 Enrollment 5,560
 President Timothy J. Sullivan (William and Mary, 1966)
 Athletics Director Terry Driscoll (Boston College, 1969)
 Associate Athletics Director .. Barbara Blosser (Ohio State, 1975)
 Nickname Tribe
 Conference Colonial Athletic Association
 Colors Green, Gold and Silver

Women's Tennis Information

Head Coach Kevin Epley (Southern Methodist, 1996)
 Epley Career Record 55-19 (.743) (First season at W&M)
 Assistant Coach Jon Reeves (South Carolina, 1993)
 Epley's Phone (757) 221-3384
 Epley's E-mail epper3210@cs.com
 Reeves' Phone (757) 221-7374
 2003 Record 25-6
 Final National Rank Eighth
 2003-04 Captain Amy Wei (2005)

Sports Information

Associate SID/Tennis Contact Dan Wakely
 Address PO Box 399, Williamsburg, VA 23187
 Wakely's Phone (757) 221-3368
 Wakely's E-mail ddwake@wm.edu
 Sports Information Fax (757) 221-3412
 Web site www.TribeAthletics.com



Media Information

The William and Mary sports information office is always interested in assisting members of the media in their coverage of Tribe women's tennis. Publicity and media information for William and Mary women's tennis are coordinated by associate sports information director **Dan Wakely**.

Photographs, feature ideas and results are always available from the William and Mary sports information office. For information and interviews call Wakely at **(757) 221-3368**, e-mail him at **ddwake@wm.edu** or visit the official W&M web site at **www.TribeAthletics.com**.

Table of Contents

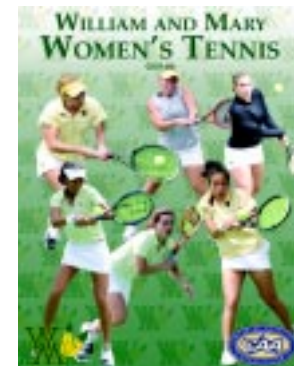
Quick Facts	IFC
William and Mary	1
Tribe Athletics	2
Athletics Administration	3
Head Coach Kevin Epley	4
Asst. Coach Jon Reeves	5
Roster and Pronunciations	5
Season Outlook	6
Kate Boomershine	7
Candice Fuchs	8
Lena Sherbakov	9
Amy Wei	10
Megan Muth	11
Lingda Yang	11
Freshmen	12
2002-03 Review	13
Colonial Athletic Association	14
NCAA Postseason	15
Honors and Awards	16
Records	17
Women's Tennis Hall of Fame ...	18
Student-Athlete Support	19
Facilities	20
Tribute to Mark McCormack	IBC
Team Photo and Schedule	BC



Media Information The William and Mary Sports Information Office is always interested in assisting members of the media in their coverage of Tribe women's tennis. Updated information, including statistics and releases, can be found on the William and Mary athletics web site at **www.TribeAthletics.com**. Publicity and media information for William and Mary women's tennis are coordinated by associate sports information director **Dan Wakely**.

Photographs, feature ideas and results are always available from the William and Mary Sports Information Office. Requests for further information and interviews should be directed to Dan Wakely at **(757) 221-3368** or by email at **ddwake@wm.edu**.

Credits The 2003-04 William and Mary Women's Tennis Media Guide is a publication of the William and Mary Sports Information Office. Layout, design and writing by associate sports information director Dan Wakely. Editing by the sports information office. Photography by Pete Clawson, Bob Kenas, Dave Kenas, Bob Keroack and Dan Wakely. Printing by Central Lithographic of Lynchburg, Virginia.



On the Cover: (Clockwise from top left) Returning Tribe players Lena Sherbakov, Candice Fuchs, Kate Boomershine, Amy Wei, Megan Muth and Lingda Yang.

*Tribe fans can follow all of the action of the 2003-04 season on the Internet at **www.TribeAthletics.com**. The web site features the latest athletic news, press releases, pictures, stats and feature stories.*

William and Mary

The College of William and Mary - The Best Small Public University in the United States

For more than 300 years, William and Mary has been a symbol of academic distinction in America. Now, in its fourth century, the College is prepared to educate the leaders of the 21st century.

The College of William and Mary was founded in 1693 by King William III and Queen Mary II of England. Four Presidents of the United States received their education at the College - George Washington, Thomas Jefferson, James Monroe and John Tyler. The current chancellor of the College is former Secretary of State Henry Kissinger, and he took over the post from former British Prime Minister Margaret Thatcher.

William and Mary was the first college to institute an honor code of conduct. The premier academic society, Phi Beta Kappa, was founded by William and Mary students in 1776. The Society of the Alumni, founded in 1842, is the sixth oldest alumni group in the nation. Now the College is designated as a "Public Ivy", and ranks 15th among the best regional business schools.



The Wren Building is the oldest one in the United States in which classes are still taught.



Lake Matoaka provides an on-campus field laboratory and recreational activities, and includes an amphitheatre to host concerts.

Did You Know?

- W&M is the best small public university in the nation, according to an analysis by *U.S. News and World Report*.
- W&M ranked sixth among all public universities in the analysis.
- W&M ranked 30th overall among the nation's best universities.
- The average freshman retention rate is 96 percent.
- The College's student/faculty ratio is 12/1.
- Over 46 percent of the classes at W&M have less than 20 students.
- The maximum enrollment for freshman seminars is 17 students.
- W&M ranked 17th in graduation rates for national universities.
- Over 20,000 internships are posted on the school's web site.
- 10,400 high school students applied for 1,300 spots in the freshman class for the 2003-04 school year.
- More W&M graduates go on to earn doctorates than any other university in the state of Virginia.
- Over 83 percent of freshmen at W&M were in the top 10 percent of their high school graduating class.

In addition to the historic Williamsburg setting of the College, there are many other attractions offered within a reasonable driving distance from campus. W&M is located within three hours of Washington, D.C. Whether you like surfing at Virginia Beach (one hour away) or skiing at Massanutten (less than three hours away), there is something for everyone in the W&M vicinity.

Amusement Parks

Busch Gardens (Williamsburg, 10 min.)
Water Country (Williamsburg, 10 min.)
Kings Dominion (Ashland, 45 min.)
Ocean Breeze (Virginia Beach, 60 min.)

You can watch the sunrise at Virginia Beach (below) or watch your life pass before your eyes on one of the thrilling roller coasters at Busch Gardens (right).

Sports/Concerts

Norfolk Scope (Norfolk, 45 min.)
Chrysler Hall (Norfolk, 45 min.)
Harbor Park (Norfolk, 45 min.)
Verizon Wireless Amphitheatre (Virginia Beach, 60 min.)
Hampton Coliseum (Hampton, 30 min.)
Richmond Coliseum (Richmond, 45 min.)
Richmond International Raceway (Richmond, 45 min.)
The Diamond (Richmond, 45 min.)



Tribe Athletics

**"Exercise and recreation ... are as necessary as reading;
I will say rather more necessary, because health is worth more than learning.
A strong body makes the mind strong."
—Thomas Jefferson, W&M Class of 1762**

Few colleges in America can boast of the combination of athletic and academic excellence that is found at the College of William and Mary. Each year, more than 500 Tribe student-athletes, competing on 23 Division I teams, prove that it is possible to simultaneously excel at the highest levels of athletics and academics.

Athletic Excellence

The 2002-03 season was one of the best in W&M history, as the Tribe had a school-record 10 teams compete in the NCAA Tournament. Four teams won conference championships, while six teams ended the season nationally ranked in the top-25. Each year the goal of the athletics department is to finish in the top-100 nationally in the NACDA Directors' Cup standings and this season W&M far exceeded that standard, ending the 2002-03 campaign ranked 58th. It marked the eighth time in the last 10 years that the Tribe finished in the top-four in Virginia and first or second in the Colonial Athletic Association.

William and Mary fields Division I teams for both men and women in basketball, cross country, golf, gymnastics, soccer, swimming and diving, tennis, and indoor and outdoor track and field.

While at William and Mary, **Lauren Nikolaus** was a three-time CAA Player of the Year and was named National Senior Player of the Year in 1998. She earned six All-America honors in her career and competed in the NCAA singles tournament four times and in the national doubles championships three times, including 1998 when she reached the semifinals.

There are also field hockey, lacrosse and volleyball squads for women of the College, while there are two additional sports (baseball and football) for men.

Overall, the College has proven dominant in the CAA, leading the league with 73 conference titles, 24 more than the next closest school. In recent years, it has become typical for W&M to win at least five conference championships and send seven or more teams to the NCAA Tournament each season.

Academic Success

The Tribe's athletic accomplishments do not come at the expense of its students' academic responsibilities. In the 2002-03 season, W&M student-athletes, who make up close to 10% of the entire student body, compiled a 3.03 grade point average.

In 2002-03 the CAA began a Scholar-Athlete of the Year award for each of the league's 21 sports. Not surprisingly, W&M set the pace with five athletes winning the honor—Tara Flint (women's soccer), Ali Henderson (women's cross country), Adam Hess (men's basketball), Chris Parsons (men's track and field) and Ann Schnell (women's golf)—more than any other school.



William and Mary - A College of Champions

NCAA Championships (2)
Men's Tennis (2) 1947, 1948

CAA Championships (73)

Baseball (1) 2001

Men's Cross Country (11) 1990, 1991, 1993, 1994, 1995, 1996, 1997, 2000, 2001, 2002, 2003

Women's Cross Country (11) 1987, 1988, 1990, 1991, 1992, 1993, 1994, 1996, 1997, 1998, 2003

Men's Golf (1) 1985

Women's Lacrosse (1) 1992

Men's Soccer (6) 1983, 1987, 1995, 1996, 1999, 2000

Women's Soccer (9) 1993, 1994, 1996, 1997, 1998, 1999, 2000, 2001, 2003

Men's Tennis (2) 1988, 1990

Women's Tennis (16) 1986, 1987, 1988, 1989, 1990, 1991, 1992, 1993, 1994, 1995, 1996, 1997, 1998, 1999, 2000, 2002

Men's Track and Field (3) 1992, 1993, 2003

Women's Track and Field (4) 1999, 2001, 2002, 2003

Volleyball (8) 1985, 1986, 1987, 1988, 1989, 1990, 1991, 2001

Atlantic 10 Football Championships (2)

1996, 2001

ECAC Championships (6)

Men's Gymnastics (2) 1992, 1994

Women's Gymnastics (4) 1999, 2001, 2002, 2003

Southern Conference Championships (48)

Men's Cross Country (15) 1955, 1956, 1957, 1963, 1964, 1966, 1967, 1968, 1969, 1970, 1971, 1972, 1973, 1974, 1975

Football (4) 1942, 1947, 1966, 1970

Men's Soccer (1) 1976

Men's Indoor Track and Field (11) 1957, 1966, 1967, 1968, 1969, 1970, 1971, 1972, 1973, 1974, 1975

Men's Outdoor Track and Field (12) 1957, 1958, 1966, 1967, 1968, 1969, 1970, 1971, 1972, 1973, 1974, 1975

Wrestling (5) 1968, 1969, 1970, 1971, 1977

Athletics Administration



Terry Driscoll

Athletics Director

With a strong personal commitment to the concept of the scholar-athlete and to competitive success, Edward C. "Terry" Driscoll, Jr. enters his eighth year as director of athletics at the College.

"In the athletic world, William and Mary is well recognized for a rare combination of two attributes: its academic strength in the classroom and its competitive strength on the field," said Driscoll. "I look forward to the challenge of

continuing the tradition of academic and athletic achievement."

A basketball All-America selection and an Academic All-America honoree at Boston College, Driscoll is an exemplary leader. Since his collegiate days, Driscoll has filled a variety of executive posts in the sporting goods industry, as well as completing an 11-year stint as a player in the National Basketball Association and as a player and coach in the Italian professional basketball league.

Driscoll has supervised the marketing of athletic products in national and international markets, enhanced the television exposure of a variety of NCAA events (including the Final Four basketball tournament) and organized and directed such internationally recognized events as the World Cup soccer games in Boston and the women's World Volleyball Grand Prix in Hawaii.

The athletic program Driscoll directs fields a total of 23 men's and women's teams which boast strong records in NCAA, Colonial Athletic Association and Atlantic 10 competition. Last year was one of the most successful in W&M history, as a school-record 10 teams competed in NCAA Tournaments. Four teams won conference cham-

pionships and six squads ended the season nationally ranked in the top 25.

Driscoll, who graduated with a Bachelor of Science degree in biology from Boston College in 1969, began his postgraduate career as a first-round draft pick of the Detroit Pistons. Before joining the Pistons, however, Driscoll opted for a year of professional basketball in Italy where he fulfilled his dream of living abroad and learning a second language. He rejoined the Pistons in 1970 and played with the Bullets and Bucks before returning to Italy in the fall of 1975, where he was named Outstanding Foreign Player of the Year. He played three years before an injury forced his retirement in 1978. He then coached his former team to two Italian League Championships before returning to the United States.

Driscoll began his post-playing career as an athletic sales promotion agent in 1980 and quickly moved up the corporate ladder. With the purchase of Bike Athletic by Kazmaier Associates in 1986, KSG Inc. was formed with the objective of becoming the first, and only, national sales agency in the Sporting Goods Industry. Driscoll was named president of KSG Inc. in 1987 and expanded the agency from 24 to 50 states by 1989. With the domestic sales agency in place, Driscoll expanded to international marketing and sales from 1989-93. In early 1990, Driscoll's contribution to a marketing research project for the NCAA was the initial step moving him from product marketing and sales to sports marketing and management. The result of the project was a joint venture between Kazmaier Associates and Host Communication - with Driscoll being named managing director and chief operating officer of NCAA International. Also in 1993-94, Driscoll assisted with the 1994 World Cup Organizing Committee as Venue Executive Director, and his Boston venue was cited for its operational success. In September of 1994, Driscoll was again enlisted to launch a new business, Eagle International Group, an event management and services company. As vice president, Driscoll worked with Hawaii Pacific Sports as well as organizing the Women's World Volleyball Grand Prix, a five-week competition in Honolulu.

Driscoll resides in Williamsburg with his wife Susan. The couple has two children, Keith, 28, a 1997 graduate of Holy Cross, and Leslie, 24, a 2001 graduate of William and Mary.



Barbara Blosser

Associate AD

Barbara Blosser comes into her 12th year as the College's associate athletics director. Blosser started her career at William and Mary as the head women's basketball coach in 1978 and guided the Tribe to a VAIW crown in her first season with a school-record 16 wins (16-13). Her 1980 Tribe team (11-14) placed third, while the 1981 squad (16-16) was VAIW runner-up. She was also at the helm during the 1984-

85 season when William and Mary made the jump to NCAA Division I. Overall, she finished her coaching career with 115 wins, 84 of which came at William and Mary.

When the College's men's and women's athletic programs merged in May of 1986, she moved to administration, first serving as

the Assistant to the Associate Athletics Director. Over the past 16 years, her administrative responsibilities at W&M have included the monitoring of financial aid matters, coordinating the scheduling of athletic facilities, supervision of coaches and staff and, currently, serving as the person primarily responsible for administering the day-to-day operations of the department.

From October 1992 to June 1993 and August 1995 to July 1996, Blosser also served as acting athletics director in an interim capacity. For her efforts, she was named the first recipient of the John Randolph Inspiration Award. Blosser has served on various committees such as the NCAA Strategic Planning Committee and the Colonial Athletic Association Competition Committee.

Blosser began her coaching career at the helm of the women's basketball program at Ashland College in Ohio. During two seasons there, she led the Eagles to successive 15-7 and 16-8 ledgers. Her 1977 squad won the AIAW Region V Championship, while her 1978 team took the OAISW Small College title.

A former three-sport standout at Ohio State, Blosser graduated Cum Laude in 1975 with a Bachelor of Science degree in physical education. At OSU, she was selected to both Phi Beta Kappa and Mortar Board. She competed in basketball, field hockey and tennis and captained both the basketball and field hockey squads her senior year. She went on to earn her master's degree from the University of North Carolina Greensboro in 1978. In 1993, she was selected as a member of the first class of women inducted to the Ohio State University Athletic Hall of Fame.

Head Coach Kevin Epley



Kevin
Epley

**Head Coach, First Season
Southern Methodist (1996)
Career Record: 55-19 (.743)**

Coaching Experience

William and Mary
Head Coach, 2003-04

Fresno State
Head Coach, 2000-03

U.S. Federation Cup Team
Assistant Coach, 1996-2002

St. Louis Aces (World Team Tennis)
Head Coach, 2001

U.S. Olympic Team
Assistant Coach, 2000

University of Arizona
Assistant Coach, 1999-2000

University of Alabama
Assistant Coach, 1998-99

Kevin Epley is in his first season as the head women's tennis coach at William and Mary. Epley comes to Williamsburg from Fresno State where he coached women's tennis for the last three years, compiling a 55-19 (.743) record.

"We believe that Kevin's competitive experience and his success with student-athletes on the court and in the classroom make him an ideal fit for William and Mary," said W&M's Director of Athletics Terry Driscoll at the time of the hire. "We look forward to him continuing the tradition of our excellent women's tennis program."

While at Fresno State, Epley led the team to the second round of the NCAA Tournament and a final national ranking of 25th or better each year, including a program-high eighth during the 2001 season. The Bulldogs won the Western Athletic Conference championship and Epley was named the WAC Coach of the Year in both 2003 and 2002. A strong developer of individual talent, he has coached eight All-Americans, two WAC Players of the Year and a WAC Freshman of the Year. His teams have achieved a combined grade point average of 3.6 or higher each year at Fresno State.

"I'm very excited to have the opportunity to coach at William and Mary," said Epley. "W&M is obviously a very strong team and this also gives me a chance to return to the East Coast. I'm thrilled at the chance to work at a school that can combine such a high commitment to academics with outstanding athletic achievement."

Prior to his time at Fresno State, Epley was an assistant coach at the University of Arizona for the 1999-2000 season, helping the Wildcats to a No. 24 final national ranking and a trip to the Sweet 16 of the NCAA

"I can't say enough about Kevin. He's a wonderful person and an excellent teacher and motivator."

Billie Jean King

20-Time Wimbledon Champion

Tournament. He was also an assistant coach at the University of Alabama for the 1998-99 campaign.

Epley has significant experience in coaching some of America's top professional players, including working with legendary Billie Jean King as an assistant coach for the 2000 United States Olympic Women's Tennis Team, helping the U.S. win a gold and bronze medal in singles and another gold medal in doubles. In the summer of 2001 he was the head coach of the Saint Louis Aces of the World Team Tennis pro league, which included players such as Andy Roddick, Rick Leach, Lindsay Davenport and Jared Palmer. Epley served as an assistant coach on the U.S. Women's Tennis Federation Cup Team from 1997-2002 and also was a personal coach for Davenport and Patty Schnyder.

Epley grew up in the Baltimore area and graduated from Southern Methodist University in 1996 with a degree in finance. He was the team's No. 1 player and captain, and was twice selected to the Commissioner's Honor Roll for Academic and Athletic Excellence.

Kevin Epley Resumé

Head Coach, Fresno State

2000-01	21-5 (.808)	Final Rank #14; WAC Runner-up; NCAA Second Round
2001-02	17-6 (.739)	Final Rank #25; WAC Champions; NCAA Second Round
2002-03	17-8 (.680)	Final Rank #20; WAC Champions; NCAA Second Round
Totals	55-19 (.743)	

Western Athletic Conference Championships
2002, 2003

Western Athletic Conference Coach of the Year
2002, 2003

- Coached eight players to All-American status, two Western Athletic Conference Players of the Year, one WAC Freshman of the Year
- Teams had a combined grade point average of 3.6 or better every season

Player, Southern Methodist

- Team's No. 1 player and captain
- First team All-Southwest Conference (1995)
- Two-time Commissioner's Honor Roll for Academic and Athletic Excellence
- Earned a degree in finance with a 3.3 overall GPA

Assistant Coach Jon Reeves/Roster



Jon Reeves

Assistant Coach, First Season South Carolina (1993)

Coaching Experience

William and Mary
Assistant Coach, 2003-04

UCLA
Assistant Coach, 2000-02

Jon Reeves is in his first year as the Tribe's assistant women's tennis coach. Reeves comes to the Tribe after stints at UCLA and a pair of acclaimed tennis academies on both sides of the country.

A 1993 graduate of the University of South Carolina, Reeves played for the Gamecocks under coach Kent Demars. In 1999, he took a job as the co-director of tennis at the Weil Tennis Academy in Ojai, California. After serving in that role for a year, Reeves then accepted a position as an assistant women's tennis coach at UCLA.

With the Bruins, Reeves was responsible for all aspects of the program, including recruiting and player development. In his first year with UCLA, the Bruins finished with a final ranking of No. 27, compiling a record of 9-18 and ending the year in the Sweet 16 of the NCAA Tournament. In the 2001-02 season, the Bruins ended the year ranked fourth in the nation with a 19-5 record, while advancing to the quarterfinals of the NCAA Championships.

Reeves served as the Director of High Performance Coaching at the Peachtree City Tennis Center in Georgia last year before coming to Williamsburg to join the Tribe.

"I am very excited to have Jon on board this year. His experience coaching the best collegiate and junior players is unparalleled. I feel very fortunate to have someone at his caliber to begin my coaching career at William and Mary"

— William and Mary Head Coach Kevin Epley

2003-04 Tribe Women's Tennis Roster

Name	Ht	Year	Hometown	High School
Kate Boomershine	5-4	Junior	Glenwood, MD	Glenelg
Alex de Guzman	5-3	Freshman	Holmdel, NJ	Holmdel
Kristen Dunbar	5-5	Freshman	Atlanta, GA	Westminster Schools
Candice Fuchs	5-7	Junior	Sarasota, FL	Pendleton
Megan Moulton-Levy	5-0	Freshman	Monroe, MI	Laurel Springs
Emily Mowery	5-4	Freshman	Bradenton, FL	Texas Tech Univ. HS
Megan Muth	5-4	Sophomore	Covington, LA	Covington
Lena Sherbakov	5-5	Junior	Mountain View, CA	Los Altos
Amy Wei	5-0	Junior	Marietta, GA	New Braunfels (TX)
Lingda Yang	5-8	Sophomore	Coconut Creek, FL	Cardinal Gibbons

Pronunciation Guide

Candice Fuchs	FUKES
Alex de Guzman	de GOOZ-man
Megan Moulton-Levy	MOLE-ton - LEE-vee
Megan Muth	MAY-gan MOOTH
Lena Sherbakov	LENN-a SHIR-ba-kov
Amy Wei	WAY

2003-04 Outlook

Last season the William and Mary women's tennis team had one of its most successful campaigns in history, setting a school record for wins with 25 and ending the year ranked eighth in the nation. The Tribe also advanced to the NCAA Tournament for the 12th time overall and the eighth time in the last nine years, reaching the Sweet 16. Five singles players and three doubles teams earned All-Colonial Athletic Association honors, and W&M sent two players to the NCAA Individual Tournament, while also claiming the ITA East Region singles title and the CAA and ITA East Region Rookies of the Year.

Despite all that success, the 2004 season looks to be even stronger for first-year head coach **Kevin Epley**, as the Tribe returns six players from last season, including five starters at both singles and doubles, while also adding four very talented freshman recruits. With no seniors on the current roster, the entire group should be able to play together for two full seasons, making the College a formidable force in the near future.

The team's leadership on the court will come from its four-person junior class, which combined for a record of 92-46 in singles and 60-32 in doubles, while totaling six All-CAA honors.

Leading the way at the top of the lineup is **Candice Fuchs**, a two-time first team all-league selection in singles and doubles. Playing No. 1 singles and doubles virtually the entire season, Fuchs ended the year ranked 26th in the nation in singles and 15th in doubles, as she made the NCAA Individual Tournament in both.

The team's captain this season is **Amy Wei**, who entered the year ranked fourth in



Megan Muth was named the ITA East Region and CAA Rookie of the Year in 2003.

school history with a .757 (53-17) career singles winning percentage. A first team All-CAA pick in singles and doubles last year, Wei teamed up with sophomore Megan Muth in the fall to win the ITA East Region doubles title. She ended last season ranked 104th in the nation in singles, as she put together a 30-6 record, including a 21-3 singles record in dual matches.

Rounding out the junior class are **Kate Boomershine** and **Lena Sherbakov**. Boomershine had an immediate impact on the team last season after transferring from Illinois, teaming up with Fuchs in doubles to end the year in the NCAA Tournament and ranked 15th in the nation. A first team All-CAA selection in doubles and second team in singles, she ended the year by winning eight of her last 11 singles matches.

Sherbakov also was a valuable contributor, posting a 20-6 singles record in the spring and ending the year by winning 13 of her last 15 contests, including three of four in the postseason.

Sophomore **Megan Muth** piled on the honors early in her career, as she was named the ITA East Region and CAA Rookie of the Year, while earning first team all-conference honors in singles and doubles. The region's singles champion in 2002 and doubles champion (with Wei) in 2003, Muth had one of the best rookie seasons in school history, with 32 singles wins and 20 doubles victories.

Also returning for the Tribe this season is sophomore **Lingda Yang**, who was a second team All-CAA pick in doubles with 2003 graduate Kari Olsen. Yang's 25 doubles wins on the year is tied for the seventh-best rookie

mark in W&M history, and she also put together an impressive 15-4 singles mark on the year, winning all six of her matches while dropping just two games in the spring.

Four talented freshman will also be in the mix for the Tribe this season and all will be immediately pushing for time in the starting lineup this spring. **Alex de Guzman** comes to the Tribe from Holmdel, New Jersey, where she was ranked as high as 180th in the nation in juniors. From Atlanta, Georgia, **Kristen Dunbar** was a four-time state champion and was ranked as high as 120th in juniors. The rookie with the most high-level experience is **Megan Moulton-Levy**, from Monroe, Michigan. Ranked as high as 58th in singles and 34th in doubles in the ITF World Junior Rankings, she competed at the Junior U.S. Open, Junior French Open and Junior Wimbledon in 2003 and won three of her four matches while playing for Jamaica in the 2003 Fed Cup. **Emily Mowery**, from Bradenton, Florida, rounds out the freshman class. Mowery was ranked as high as 358th in singles and 604th in doubles in the world junior rankings, and was 52nd in the U.S. junior rankings.

As always, the Tribe will face one of the toughest schedules in the nation, as W&M is slated to face at least 16 teams that either made the 2003 NCAA Tournament or finished ranked at the end of last season, including seven that ended the year ranked in the top-25. Matchups with perennial national powers Texas, Northwestern, Wake Forest, North Carolina, Miami, Florida, South Alabama, Notre Dame and Virginia Commonwealth are scattered throughout the spring schedule. In addition, the Tribe has once again been invited to compete at the prestigious ITA National Team Indoor Championships in Madison, Wisconsin, featuring 16 of the best women's tennis teams in the nation.



Candice Fuchs (left) and **Kate Boomershine** ended the year ranked 15th in the nation.



Amy Wei ended last season nationally ranked in singles and earned first team All-CAA honors.

Kate Boomershine



Kate
Boomershine

5-4 • Junior
Glenwood, MD
Glenelg

Off the Court with Kate

Favorite post-match meal
Chicken or pasta

Favorite playing surface
Hard

If I could spend a week with anyone it would be
My grandmother

Favorite actor
Bruce Willis

One word that describes you
Energetic

Favorite movie
Forrest Gump

My ultimate SportsCenter highlight would be
W&M winning the NCAA championship

Favorite book
Tuesdays with Morrie

Favorite tennis player
Andre Agassi

Favorite sporting event
College basketball

Favorite vacation spot
Anywhere warm with beaches

Favorite professional athlete
Michael Jordan

2002-03: Played at the NCAA Doubles Championships with teammate Candice Fuchs ... The two ended the year ranked 15th in the nation and first in the East Region and were ranked as high as ninth in the country ... First team All-CAA in doubles (with Fuchs) and second team in singles ... Ranked 25th in the East Region in singles ... Upset three ranked singles opponents ... Ended the year by winning eight of her last 11 singles matches ... Advanced to the round of 16 at the ITA East Region singles championships ... With Fuchs in doubles went 21-8, including a 7-0 record in the fall ... The pair defeated seven nationally-ranked opponents, including the then-No. 1 team of Lauren Barnikow / Erin Burdette (Stanford), 8-5, on the road ... The two won the top flight of the W&M Invitational and advanced to the round-of-16 of the ITA All-American Championships Qualifying Draw, before withdrawing due to injury. **2001-02 (Illinois):** Won 12 singles matches, playing predominantly at the four and five spots in the lineup ... Won two matches at the Hurricane Invitational ... Lost a close three-set match to 82nd-ranked singles opponent ... Won two doubles matches with Jennifer McGaffigan in the consolation round of the ITA Midwest Regionals. **Juniors/High School:** Played just her freshman year of high school tennis ... Was

named South Jersey Player of the Year and was selected to the all-state first team ... Also set school record for most matches won in a single season ... Made the honor roll throughout high school career. **Personal:** Full name is Kate Irene Boomershine ... Born May 30, 1983 in Mt. Laurel, New Jersey ... Daughter of David and Melinda Boomershine ... Plans to major in business ... Enjoys playing sports and running.

Career Statistics		
	Singles	Doubles
2001-02*	11-16 (.407)	8-17 (.320)
2002-03	17-12 (.586)	26-10 (.722)
Career	28-28 (.500)	34-27 (.557)
* at Illinois		
Honors		
2002-03	First Team All-CAA (doubles) Second Team All-CAA (singles)	
Final National Ranking		
	Singles	Doubles
2002-03	—	15
Final East Region Ranking		
	Singles	Doubles
2002-03	25	1



Candice Fuchs



Candice
Fuchs

5-7 • Junior
Sarasota, FL
Pendleton

Off the Court with Candice

- Favorite tennis player*
Monica Seles
- Person would most like to meet*
Robin Williams
- Favorite vacation spot*
San Diego
- What I like most about playing tennis*
The competition
- Favorite playing surface*
Hard
- Best player ever faced*
Jennifer Capriati
- Favorite pro sports team*
Tampa Bay Buccaneers
- Favorite actor*
Adam Sandler
- Favorite actress*
Julia Roberts
- People would be surprised to know that*
I am ambidextrous
- Favorite junk food*
Swedish fish
- Worst fear*
Spiders
- Favorite band*
Dashboard Confessional

Currently tied for the ninth-best career doubles winning percentage (.734, 47-17) in school history. **2002-03:** Advanced to the second round of the NCAA Singles Tournament ... Also competed in the national doubles championships with Kate Boomershine ... Ended the year nationally ranked 26th in singles and 15th in doubles ... Nationally ranked as high as 21st in singles and ninth in doubles during the season ... Ranked fourth in the East Region in singles and first in doubles with Boomershine ... First team All-CAA selection in singles and doubles for second straight year ... Every singles loss was to an opponent who ended the season nationally ranked ... 14 singles wins and seven doubles victories against ranked opponents ... Clinched W&M's NCAA Tournament second round win with a straight-set victory over 32nd-ranked Viktoria Stoklasova (South Alabama), 6-2, 6-2 ... Won first and second round singles matches of the ITA All-American Qualifying Draw ... Clinched W&M's 4-3 victory over Kentucky at the ITA National Team Indoor Championships with her 25th career singles win on Feb. 8, a 4-6, 7-5, 6-2 decision over No. 37 Sarah Witten ... With Boomershine in doubles, went 21-8, including a 7-0 record in the fall ... The pair defeated seven nationally-ranked opponents, including the then-No. 1 team of Lauren Barnikow/Erin Burdette (Stanford), 8-5, on the road ... Earned her 25th career doubles win when the two won the top flight of the W&M Invitational on Sept. 22, defeating Jennifer McGaffigan/Michelle Webb (Illinois), 8-4 ... The pair advanced to the round-of-16 of the ITA All-American Championships Qualifying Draw, before withdrawing due to injury. **2001-02:** CAA Rookie of the Year ... Also received first team all-league honors in both singles and doubles ... Ended the season nationally ranked 91st in singles and 23rd in doubles (with Jessyca Arthur) ... She and Arthur were the top-ranked doubles team in the region and she was the No. 10 singles player in the East ... The pair were selected to compete in the NCAA Doubles Tournament ... Her 21-6 (.778) doubles record is the sixth-best rookie mark in school history ... Won the first singles match of her career on Jan. 12, defeating Michelle DeCosta (Michigan) at the Tribe Classic, 7-6 (4), 7-6 (5) ... Also won her first career doubles match on the same day, as she and Arthur defeated Rebecca Ho/Megan Marton (Penn State), 8-4 ... Opened her career with 7-0 records in both singles and doubles ... Recorded wins over four ranked singles opponents, including No. 55 Lia Jackson (Northwestern) in the fifth match of her career ... Defeated seven ranked doubles teams with Arthur, including two in the top-25 ... All but one of their losses were to opponents ranked 18th or better at the end of the year. **Juniors/High School:** Ranked as high as No. 5 in the USTA 18 and under rankings ... Ranked 400th in the world by the WTA with three wins over top 100 opponents ... Played in the qualifying round of the US Open ... Runner-up at 2000 USTA 18 and under national championships ... Won the USTA

Career Statistics		
	Singles	Doubles
2001-02	16-6 (.727)	21-6 (.778)
2002-03	19-14 (.576)	26-11 (.703)
Career	35-20 (.636)	47-17 (.734)
Honors		
2001-02	CAA Rookie of the Year First Team All-CAA (singles and doubles) NCAA Individual Tournament (doubles)	
2002-03	First Team All-CAA (singles and doubles) NCAA Individual Tournament (singles and doubles)	
Final National Ranking		
	Singles	Doubles
2001-02	91	23
2002-03	26	15
Final East Region Ranking		
	Singles	Doubles
2001-02	10	1
2002-03	4	1

National Girls 16 Indoor singles title in 1998 ... Member of the San Diego Tennis Hall of Fame ... Represented the U.S. in the World Junior Tennis competition (the equivalent to the Fed Cup) in doubles in 1996 ... Won the Easter Bowl Singles Championships in Girls 14 (1996) and Girls 16 (1998), as an unseeded player ... Ranked No. 1 in 16 and under United States juniors ... 1999 Southern California Player of the Year. **Personal:** Full name is Candice Michelle Fuchs ... Daughter of Axel and Stacy Fuchs ... Uncle, John, played football at the Naval Academy ... Has future goal of representing the U.S. in the Olympic Games ... Enjoys playing baseball and going to movies ... Born March 31, 1982 in Poway, California.



Lena Sherbakov



Lena Sherbakov

5-5 • Junior
Mountain View, CA
Los Altos

Off the Court with Lena

Favorite musical artist
Jack Johnson

Favorite playing surface
Grass

Best tennis player ever faced
Ashley Harkleroad

Favorite class at W&M
Psychology 101

One word that describes you
Easy-going

Favorite place on the W&M campus
Greenhouse on top of Millington

What I like most about W&M
Small and personal

Favorite book
Siddhartha

Person would most like to meet
Patrick Rafter

Favorite food
Golubtsi

Favorite actor
Matthew McConaughey

Favorite actress
Jennifer Aniston

Favorite post-match meal
Power Bar

2002-03: Won 20 of her 26 spring singles matches, ending the season by winning 13 of her last 15 contests ... Won all three of her singles matches at the Tribe Classic in the fall ... Won her 25th career singles match on Sept. 20 at the W&M Invitational, defeating Nikki Ptak (Pennsylvania), 6-0, 6-2 ... Her 50th career singles win came in the Tribe's second round NCAA Tournament win over South Alabama, as she defeated Klara Jarova, 6-1, 6-4 ... Went 2-1 with Kate Boomershine in doubles, including a win against Kentucky at the ITA Team Indoors ... Won two matches to advance to the round-of-16 with Megan Muth at the ITA East Regionals ... 3-1 record with Kari Olsen as they advanced to the final match of the second flight at the W&M Invitational. **2001-02:** Led W&M with 24 singles wins ... Won the first singles match of her career, defeating No. 68 Sanela Kunovac (Pennsylvania), 4-6, 6-1, 6-3 at the W&M Invitational on Sept. 21 ... Won the top singles flight at the Penn State Fall Invitational, defeating No. 84 Rebecca Ho (Penn State), 6-4, 6-3 ... Opened the spring season winning nine of her first 10 singles contests ... Won her singles matches in the CAA semifinals (against James Madison) and the championship (against Virginia Commonwealth) ... Recorded the Tribe's only point against

Duke, defeating Ioana Plesu, 6-4, 3-6, 1-0 (7) ... Her first career doubles win came with Jessyca Arthur against Megan Marton/Leigh Ann Merryman (Penn State), 8-3, at the Penn State Fall Invitational on Oct. 13 ... Won doubles matches with Angela Buergis against Wake Forest and Miami. **Juniors/High School:** Team MVP for three years (1998, 1999 and 2001) ... Finished third at the National Grass Court Championships ... Finished sixth at the USTA Girls 18 Super National Hard Court Championships he senior year ... Ranked as high as 16th nationally in the girls 18 division. **Personal:** Full name is Lena Olga Sherbakov ... Daughter of Oleg and Elena Sherbakov ... Enjoys biking, volleyball, drawing and playing the guitar ... Born May 10, 1983 in Moscow, Russia.

Career Statistics		
	Singles	Doubles
2001-02	24-13 (.649)	10-8 (.556)
2002-03	26-14 (.650)	9-8 (.529)
Career	50-27 (.649)	19-16 (.543)
Final East Region Ranking		
	Singles	Doubles
2001-02	21	—



Amy Wei



Amy
Wei

5-0 • Junior
Marietta, GA
New Braunfels (TX)

Off the Court with Amy

Favorite junk food
Snickers

Worst fear
Heights

Favorite pro sports team
L.A. Lakers

What I like most about playing tennis
Winning

Person would most like to meet
Madonna

Favorite vacation spot
Bahamas

Craziest ambition
To work for and appear on E!

Favorite tennis player
Michael Chang

Favorite actor
Ben Affleck

Favorite actress
Reese Witherspoon

One word that describes you
Happy

Favorite TV show
Friends

Favorite sports memory
Making it to the Sweet 16 of the NAAs in 2003

Team captain ... Enters her junior year with the fourth-best career singles winning percentage (.757, 53-17) in school history. **2002-03:** Ended the year ranked 104th in the nation in singles, and was as high as 102nd during the season ... Ranked 16th in the East Region in singles and 11th in doubles with Megan Muth ... First team All-CAA in singles and doubles ... Third on the team with 30 singles wins ... Finished with the fifth-best season singles winning percentage (.833, 30-6) in school history ... Posted a 21-3 singles record in the spring, including a 17-match winning streak near the end of the season ... 2-2 record against singles opponents who were ranked at the end of the season ... Won the third singles flight of the W&M Invitational ... Advanced to the third round of the ITA East Region Singles Championship ... 25th career singles win came on Sept. 20 against Ginger Lowdermilk (Virginia Tech), 6-1, 6-1, at the W&M Invitational ... Won her 50th career singles match on April 13 at Texas against Ziva Grasic (7-5, 6-1) ... 13-8 record with Muth in doubles ... The two won the top flight of Wake Forest's Deacon Classic in the fall. **2001-02:** Won 26 doubles matches, tied for the fourth-best total for a rookie in school history ... Second team All-CAA with Kari Olsen in doubles ... Her 23 singles wins was the second-best mark on the team ... Won her first collegiate singles match, defeating Meredith Vincent (Virginia Tech), 6-1, 6-2, at the W&M Invitational on Sept. 21 ... Advanced to the top-flight semifinals of the Penn State Fall Invitational and the third round of the ITA East Regionals ... Among her 18 dual-match singles victories were wins against individuals from Northwestern, Wake Forest, Miami, Mississippi, Texas and Virginia Commonwealth (in the CAA final) ... Also won her match in the NCAA Tournament against Clemson ... Finished the year very strong, winning nine of her last 10 singles contests ... Teamed up with Lena Sherbakov to earn her first career doubles win, an 8-5 decision over Kristen Stubbs/Meredith Vincent (Virginia Tech) on Sept. 21 at the W&M Invitational ... Recorded a 24-10 doubles record with Olsen as they finished the season as the East Region's 13th-ranked doubles team ... The pair won five-straight in the fall and opened the spring season winning 15 of their first 17 matches ... Narrowly missed upsetting 60th-ranked Jessica Johnson/Ashley Kroh

Career Statistics		
	Singles	Doubles
2001-02	23-11 (.676)	26-12 (.684)
2002-03	30-6 (.833)	23-12 (.657)
Career	53-17 (.757)	49-24 (.671)
Honors		
2001-02	Second Team All-CAA (doubles)	
2002-03	First Team All-CAA (singles and doubles)	
Final National Ranking		
	Singles	Doubles
2002-03	104	—
Final East Region Ranking		
	Singles	Doubles
2001-02	—	13
2002-03	16	11

(Marshall), losing 8-9 (5) ... Won her 25th career doubles match in the CAA Championship on April 21, as she and Olsen defeated Jana Carollo/Christina Gago (Virginia Commonwealth) to clinch the crucial team doubles point ... Earned team's best attitude award. **Juniors/High School:** MVP of Walton Tennis Team as a freshman ... Ranked No. 1 in the south and as high as 19th in the nation in girls 18s ... Involved in student government ... National Merit nominee ... Recipient of Principal's Award for most outstanding student. **Personal:** Full name is Hai-Lin Wei ... Daughter of Bee Chong and Ying Lan Wei ... Sister, Tracy, was a member of George Washington's women's tennis team and graduated last May ... Majoring in business ... Born June 22, 1983 in Taiwan.



Megan Muth/Lingda Yang



Megan Muth

5-4 • Sophomore
Covington, LA
Covington

2002-03: ITA East Region Rookie of the Year ... CAA Rookie of the Year ... Ended the season ranked 65th in the nation in singles, after reaching a high of 52 during the year ... Ranked seventh in the East Region in singles and 11th in doubles with Amy Wei ... First team All-CAA in singles and doubles ... Second on the team with 32 singles wins, tied for the third-best total by a rookie in W&M history ... Won six-straight matches, upsetting five higher seeds and four ranked opponents, on her way to winning the ITA East Region singles title ... Competed at the National Intercollegiate Indoor Championships in the fall ... 22-7 singles record in the spring, including winning 13-straight at one point ... Defeated nine ranked singles players ... First career singles win was Sept. 20 against Carolyn Kramer (Virginia Tech), 6-3, 6-4, at the W&M Invitational ... 25th career singles win came on April 1 with a win

over Old Dominion's Maretha van Niekerk (3-0, ret.) ... Won the first doubles match of her career, as she and Wei teamed up to defeat Vanessa Bagnato/Lindsay Cox (Richmond), 8-3, on Sept. 20 at the W&M Invitational. **Juniors/High School:** Played high school tennis her freshman and senior years ... Both years selected as team MVP, won the state 5-A singles title and was named the best female athlete of the year in Louisiana and to the all-metro team ... Broke high school record for most career wins and was the first player to

go undefeated and win two state titles ... Ranked No. 1 in south region and as high as No. 20 in girls 16s ... Participated on Louisiana Fed Cup team ... Competed on first place Southern Section team at Intersectionals ... Won singles and doubles title at Indiana's ITA Tournament in summer of 2002 ... Member of National Honor Society, Spanish Club, Beta Club and secretary of Mu Alpha Theta ... Maintained a GPA of 3.5 or higher all four years. **Personal:** Full name is Megan Elizabeth Muth ... Daughter of Michael Muth and Sandy Tusson ... Enjoys writing, riding horses and camping. Plans to major in biology ... Born December 14, 1983 in New Orleans, Louisiana.



Career Statistics

	Singles	Doubles
2002-03	32-12 (.727)	20-15 (.571)

Honors

2002-03	ITA East Region Rookie of the Year CAA Rookie of the Year First Team All-CAA (singles and doubles) ITA East Region Champion (singles)	
---------	--	--

Final National Ranking

	Singles	Doubles
2002-03	65	—

Final East Region Ranking

	Singles	Doubles
2002-03	7	11



Lingda Yang

5-8 • Sophomore
Coconut Creek, FL
Cardinal Gibbons

2002-03: Second team All-CAA in doubles with Kari Olsen ... Recorded 25 doubles wins, tied for the seventh-best total by a rookie in school history ... Won her first six singles matches, including the finals of her flight at the W&M Invitational ... Went 6-0 in singles in the spring, dropping just two games ... First career singles win was Sept. 20 at the W&M Invitational against Joelle Good (Marshall), 6-2, 6-2 ... 14-7 record in doubles with Olsen, including an 11-5 mark in the spring ... First career doubles win was Sept. 21 with Nina Kamp against Holly Asel/Lille Nzudie (Marshall), 8-5, at the W&M Invitational ... 25th career doubles win came with Olsen on May 9 over Rene Deyzel/Laura Seiverling (Temple) in W&M's first round NCAA Tournament victory. **Juniors/High School:** Played three years of tennis at the No. 1 and 2 positions ... Winner of numerous junior championships, including doubles titles in the Tampa and Atlanta National Opens and the Bush Florida Open ... Three-time

district, regional and state champion in both singles and doubles ... Team also won district, regional and state titles all three years ... Ranked as high as 17th in Florida and 59th in the nation in the 18 and under age group ...

Ranked eighth in the nation in under-18 doubles ... 2000-01 National High School Tennis All-American ... Member of the Senior Athletic Club ... Contributed time to a number of food and clothing drives. **Personal:** Full name is Lingda Yang ... Daughter of Honggang Yang and Jie Shi ... Enjoys swimming, sports, running and reading ... Plans to major in biology and is interested in medicine and surgery ... Born March 9, 1984 in Harbin, China.



Career Statistics

	Singles	Doubles
2002-03	15-4 (.789)	25-12 (.676)

Honors

2002-03	Second Team All-CAA (doubles)	
---------	-------------------------------	--

Freshmen



Alex
de Guzman

5-3 • Freshman
Holmdel, NJ
Holmdel

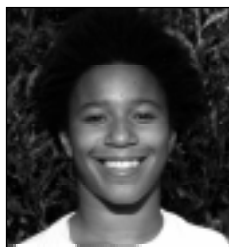
Juniors/High School: Nationally ranked 180th in the girls 18s in July of 2003 and has been as high as 17th in the Eastern section in her career ... Played No. 1 singles her last three seasons after playing No. 2 as a rookie ... Career record of 74-10 ... Four-time first team all-state ... State Player of the Year as a senior ... Reached the finals of the state championship as a senior after making the quarterfinals as a junior ... Team won the state championship freshman year ... High school won the Group II NJSIAA state championship her freshman year ... Also was a member of Social Action, was a photographer for school publications and volunteered in a soup kitchen. **Personal:** Full name is Alexandra Samala de Guzman ... Daughter of Allen and Terry de Guzman ... Enjoys drawing and listening to music ... Born January 23, 1985 in Teaneck, New Jersey.



Kristen
Dunbar

5-5 • Freshman
Atlanta, GA
Westminster Schools

Juniors/High School: Named high school team MVP last three years and team captain as a senior ... Four-time state champion with a combined 54-2 career record ... Competed on the first place Georgia Fed Cup team and the Southern Fed Cup team ... Ranked 120th in the nation in July of 2003 ... In 2002 ranked first in the state and fourth in the southern section ... Ranked 43rd in the nation in 16s ... Won the Clemson Bullfrog Designated, Georgia State Qualifier and Southern Junior Indoor Championships in 2002 ... Also ran cross country for two years ... Member of National Honor Society, Mu Alpha Theta and Spanish Club ... Honor Roll every quarter ... AP Scholar. **Personal:** Full name is Kristen Elizabeth Dunbar ... Daughter of Mark and Glenda Dunbar ... Enjoys running ... Plans to major in biology ... Born July 26, 1985 in Atlanta, Georgia.



Megan
Moulton-Levy

5-0 • Freshman
Monroe, MI
Laurel Springs

Juniors/High School: Ranked as high as 58th in singles and 34th in doubles in the ITF World Junior Rankings ... As of July 2003, was ranked 16th nationally in 18s and has been as high as third in the Midwest section ... Competed at Junior U.S. Open, Junior French Open and Junior Wimbledon in 2003 ... Won three of her four matches while playing for Jamaica in the Fed Cup competition in April 2003 ... Won four titles and finished in the quarterfinals, or better, in 24 singles and doubles tournaments in her career ... Also participated on basketball, track and field and ski teams. **Personal:** Full name is Megan Nicole Moulton-Levy ... Daughter of George Levy and Paulette Moulton-Levy ... Father ran track at Nebraska and competed in the 1972 Munich Olympic Games in the 100 and 4x100 ... Sister, Natasha, graduated from William and Mary in 1995 ... Considering a major in psychology ... Born March 11, 1985 in Detroit, Michigan.



Emily
Mowery

5-4 • Freshman
Bradenton, FL
Texas Tech Univ. HS

Juniors/High School: Ranked as high as 358th in singles and 604th in doubles in the ITF World Junior Rankings ... As of July 2003, ranked 52nd nationally and as high as 12th in Florida in girls 18s ... Won state championship during freshman year at Upper Arlington HS ... Also competed in soccer, gymnastics and horseback riding. **Personal:** Full name is Emily Meredith Mowery ... Daughter of James and Anne Mowery ... Plans to major in international relations ... Born February 1, 1985 in Columbus, Ohio.

2002-03 Results and Statistics

2003 Schedule and Results

26-5 overall, 4-0 CAA

January

19	#T75 MARSHALL	W 7-0
24	#36 MISSISSIPPI	W 7-0
26	#6 ARIZONA STATE	L 1-6

February

2	UNC WILMINGTON	W 7-0
2	JAMES MADISON	W 7-0
<i>ITA Team Indoor Championships</i>		
6	vs. #10 California	L 0-7
7	at #27 Wisconsin	W 5-2
8	vs. #34 Kentucky	W 4-3
15	#7 NORTH CAROLINA	L 3-4
22	vs. #51 Minnesota	W 6-1
23	at #42 Wake Forest	W 5-2

March

1	at #15 Northwestern	W 4-3
4	at #3 Stanford	L 2-5
6	at #16 Fresno State	W 5-2
16	#63 MARYLAND	W 6-1
16	GEORGE MASON	W 7-0
22	vs. Iowa	W 7-0
23	at #27 Notre Dame	W 4-3
29	AMERICAN	W 7-0

April

1	OLD DOMINION	W 6-1
1	GEORGE WASHINGTON	W 7-0
5	#61 VIRGINIA TECH	W 6-1
6	#19 MIAMI	W 5-2
12	at #30 Texas A&M	W 4-3
13	at #33 Texas	W 5-2

CAA Tournament

18	GEORGE MASON	W 4-0
19	vs. James Madison	W 4-0
20	vs. #13 VA Commonwealth	L 3-4

May

NCAA Tournament

9	TEMPLE	W 4-0
10	#14 SOUTH ALABAMA	W 4-1
15	vs. #3 Duke	L 0-5

- W&M set a school record with 26 wins and finished the season ranked eighth in the nation, tied for the Tribe's highest-ever final ranking.
- The Tribe advanced to the Sweet Sixteen of the NCAA Tournament for the sixth time.
- For the ninth consecutive year W&M did not lose to an unranked opponent.
- Three singles players and a doubles team ended the year in the national rankings.
- Candice Fuchs competed at the NCAA Individual Tournament in singles and in doubles with Kate Boomershine.
- Megan Muth won the ITA East Region singles title and was named CAA and ITA East Region Rookie of the Year.
- Five singles players and three doubles teams earned All-CAA honors, and head coach Brian Kalbas was named CAA Coach of the Year for the fifth time.
- W&M defeated nine teams that ended the season ranked in the top-35 nationally.
- Five singles players and two doubles teams were ranked in the East Region at the end of the year.

2002-03 Tribe Women's Tennis

All-Colonial Athletic Association

First Team: *Singles* - Candice Fuchs, Megan Muth, Amy Wei. *Doubles* - Kate Boomershine / Candice Fuchs, Megan Muth / Amy Wei.

Second Team: *Singles* - Kate Boomershine, Nina Kamp. *Doubles* - Kari Olsen / Lingda Yang.

Rookie of the Year: Megan Muth

Coach of the Year: Brian Kalbas

Final National Rankings

Team	8
Candice Fuchs	26
Megan Muth	65
Amy Wei	104
Kate Boomershine / Fuchs	15

ITA East Region

Team	2
Candice Fuchs	4
Megan Muth	7
Amy Wei	16
Nina Kamp	24
Kate Boomershine	25
Boomershine / Fuchs	1
Muth / Wei	11

Rookie of the Year: Megan Muth

Singles Champion: Megan Muth

2002-03 Statistics

Singles

Player	Overall	Dual	Tourn.	CAA
Kate Boomershine	17-12	11-10	6-2	2-0
Candice Fuchs	19-14	13-11	6-3	1-1
Nina Kamp	36-11	21-8	15-3	3-0
Megan Muth	32-12	22-7	10-5	4-0
Kari Olsen	26-4	14-1	12-3	3-0
Kelli Partlow	6-3	1-0	5-3	1-0
Melissa Reed	6-5	0-0	6-5	0-0
Lena Sherbakov	26-14	20-6	6-8	3-0
Amy Wei	30-6	21-3	9-3	3-0
Lingda Yang	15-4	6-0	9-4	3-0
Totals	213-85	129-46	84-39	23-1

Doubles

Player	Overall	Dual	Tourn.	CAA
Kate Boomershine	26-10	19-9	7-1	3-0
Candice Fuchs	26-11	17-10	9-1	3-0
Nina Kamp	13-4	5-0	8-4	3-0
Megan Muth	20-15	13-13	7-2	3-0
Kari Olsen	24-13	17-9	7-4	2-0
Kelli Partlow	6-3	5-0	1-3	3-0
Melissa Reed	3-2	0-0	3-2	0-0
Lena Sherbakov	9-8	2-4	7-4	1-0
Amy Wei	23-12	15-10	8-2	3-0
Lingda Yang	25-12	17-7	8-5	3-0

Doubles Teams

Player	Overall	Dual	Tourn.	CAA
Boomershine / Fuchs	21-8	14-7	7-1	1-0
Boomershine / Partlow	1-0	1-0	0-0	0-0
Boom. / Sherbakov	2-1	2-1	0-0	1-0
Boomershine / Yang	2-1	2-1	0-0	1-0
Fuchs / Kamp	1-0	0-0	1-0	0-0
Fuchs / Muth	2-2	2-2	0-0	1-0
Fuchs / Olsen	1-1	1-1	0-0	1-0
Fuchs / Wei	1-0	0-0	1-0	0-0
Kamp / Olsen	1-0	1-0	0-0	0-0
Kamp / Partlow	3-0	2-0	1-0	2-0
Kamp / Sherbakov	2-2	0-0	2-2	0-0
Kamp / Wei	2-0	2-0	0-0	1-0
Kamp / Yang	4-2	0-0	4-2	0-0
Muth / Olsen	1-0	1-0	0-0	0-0
Muth / Sherbakov	2-4	0-3	2-1	0-0
Muth / Wei	13-8	8-7	5-1	2-0
Muth / Yang	2-1	2-1	0-0	0-0
Olsen / Sherbakov	3-1	0-0	3-1	0-0
Olsen / Wei	4-4	3-3	1-1	0-0
Olsen / Yang	14-7	11-5	3-2	1-0
Partlow / Reed	0-2	0-0	0-2	0-0
Partlow / Yang	1-1	1-0	0-1	1-0
Partlow / Wei	1-0	1-0	0-0	0-0
Wei / Yang	2-0	1-0	1-0	0-0
Reed / Other	3-0	0-0	3-0	0-0
Totals	89-45	55-31	34-14	12-0

Colonial Athletic Association

Final 2003 Standings

	Overall		CAA	
	W-L	Pct.	W-L	Pct.
1. (8) WILLIAM AND MARY	25-6	.806	4-0	1.000
2. (15) Virginia Commonwealth	24-1	.960	3-0	1.000
3. Old Dominion	10-12	.455	1-2	.333
4. James Madison	14-7	.667	5-1	.833
5. UNC Wilmington	10-8	.556	3-3	.500
6. Delaware	8-11	.421	4-1	.800
7. Towson	10-14	.417	2-3	.400
8. George Mason	5-12	.294	1-7	.125
9. Hofstra	1-12	.077	1-4	.200
10. Drexel	3-11	.214	0-4	.000

Numbers in parentheses indicate final 2003 national ranking. Teams were seeded in the CAA Tournament by vote of the league's head coaches.

CAA Tournament Results

First Round - Towson 4, Drexel 3; George Mason 4, Hofstra 2.

Quarterfinals - Old Dominion 4, Delaware 1; Virginia Commonwealth 4, Towson 0; **William and Mary 4, George Mason 0**; James Madison 4, UNC Wilmington 0.

Semifinals - Virginia Commonwealth 4, Old Dominion 0; **William and Mary 5, James Madison 0**.

Championship - Virginia Commonwealth 4, **William and Mary 3**.

All-CAA

FIRST TEAM

Singles - Beatriz Cabrera (VCU), Nataly Cahana (ODU), Marina Escobar Martinez (VCU), **Candice Fuchs (W&M), Megan Muth (W&M), Amy Wei (W&M)**, Barbora Zahnova (VCU).

Doubles - **Kate Boomershine/Candice Fuchs (W&M), Megan Muth/Amy Wei (W&M)**, Silvia Urickova/Barbora Zahnova (VCU).

SECOND TEAM

Singles - **Kate Boomershine (W&M)**, Kerstin Endlich (ODU), **Nina Kamp (W&M)**, Silvia Urickova (VCU), Jessica Wilkes (Del.), Margie Zesinger (JMU).

Doubles - Christina Arribas/Beatriz Cabrera (VCU), Lindsey Hess/Sallie Kiser (UNCW), **Kari Olsen/Lingda Yang (W&M)**.

Player of the Year: Nataly Cahana (Old Dominion)

Rookie of the Year: Megan Muth (William and Mary)

Coach of the Year: Brian Kalbas (William and Mary)

CAA Women's Tennis Champions

Year	Champion	Runner-Up
2003	VCU	William and Mary
2002	William and Mary	William and Mary
2001	Old Dominion	William and Mary
2000	William and Mary	VCU
1999	William and Mary	Richmond
1998	William and Mary	VCU
1997	William and Mary	Richmond
1996	William and Mary	VCU
1995	William and Mary	Richmond
1994	William and Mary	Richmond
1993	William and Mary	Richmond
1992	William and Mary	Richmond
1991	William and Mary	James Madison
1990	William and Mary	James Madison
1989	William and Mary	Richmond
1988	William and Mary	James Madison
1987	William and Mary	James Madison
1986	William and Mary	James Madison
1985	Richmond	William and Mary

William and Mary has dominated the CAA in women's tennis, winning 16 of 19 league titles, more than any other school in any one sport. The Tribe finished second each of the three times it did not win the conference championship.

William and Mary All-CAA Selections

1985	Mimi Roche (3) Debbie MacColl (5) Tracy Ruoff (6) H. Clark/M. Roche (1) D. MacColl/T. Ruoff (2)	Shannon Blackwell (5) Raissa Remandaban (6) K. Guenther/K. van der Merwe (1) S. Blackwell/A. Milholland (2)
1986	Namratha Appa-Rao (1) Mimi Roche (3) Kathy Chronister (6) N. Appa-Rao/K. Chronister (3)	1994 Allegra Milholland (2) Johanna Sones (3) Megan Coakley (4) Christine Caltoum (5) Shawn Arrowsmith (6) K. Guenther/A. Milholland (1) C. Caltoum/J. Sones (2)
1987	Namratha Appa-Rao (1) Leslie Whipple (4) Kirsten Caister (6) N. Appa-Rao/K. Caister (2) C. Mitchell/M. O'Bryan (3)	1997 Lauren Nikolaus Michelle O Johanna Sones Carolijn van Rossum L. Nikolaus/J. Sones M. O/C. van Rossum
1988	Danielle Webster (4) Cynthia Mitchell (5) Kirsten Caister (6) D. Durak/J. Kaczmarek (1) K. Caister/D. Webster (2)	1998 Michelle O Lauren Nikolaus L. Nikolaus/M. O
1989	Julie Kaczmarek (1) Danielle Durak (2) Kirsten Caister (3) Danielle Webster (4) Cynthia Mitchell (5) Lindsay Whipple (6) D. Durak/J. Kaczmarek (1) C. Mitchell/D. Webster (2) K. Caister/D. Herring (3)	1999 Carolijn van Rossum (1) Tari Ann Toro (1) Delphine Troch (1) Lindsay Sullivan (2) T. Toro/L. Tsaggaris (1) D. Troch/C. van Rossum (1)
1990	Danielle Durak (1) Cynthia Mitchell (2) Kirsten Caister (3) Deb Herring (5) Danielle Webster (6) D. Webster/J. Wood (2) D. Herring/C. Mitchell (3)	2000 Carlijn Buis (1) Delphine Troch (1) Carolijn van Rossum (1) Jessyca Arthur (2) Lindsay Sullivan (2) C. Buis/D. Troch (1) J. Arthur/L. Sullivan (2)
1991	(Singles not played) K. Kurth/J. Wood (1) M. Mair/K. van der Merwe (2) K. Gallego/D. Herring (3)	2001 Delphine Troch (1) Jessyca Arthur (2) Lindsay Sullivan (2) J. Arthur/D. Troch (1)
1992	Julie Shiflet (1) Karen van der Merwe (3) Michele Mair (4) Deb Herring (5) Katrin Guenther (6) M. Mair/K. van der Merwe (1) K. Guenther/J. Shiflet (2) D. Herring/K. Siegel (3)	2002 Jessyca Arthur (1) Candice Fuchs (1) J. Arthur/C. Fuchs (1) Delphine Troch (2) K. Olsen/A. Wei (2)
1993	Karen van der Merwe (1) Katrin Guenther (2) Allegra Milholland (3)	2003 Candice Fuchs (1) Megan Muth (1) Amy Wei (1) K. Boomershine/C. Fuchs (1) M. Muth/A. Wei (1) Kate Boomershine (2) Nina Kamp (2) K. Olsen/L. Yang (2)



In 2002 the W&M women's tennis team won its 16th CAA title.

NCAA Postseason

William and Mary's rise to national prominence is due, at least in part, to the team's success at the NCAA Championships. Although the College had previously placed athletes in the NCAA Tournament as individuals or doubles teams, William and Mary first reached the NAAs as a team in 1989. In the spring of 1992 the Tribe achieved its first victory at the NAAs, defeating 15th-ranked University of Miami in the first round.

Under the guidance of former head coach Brian Kalbas, the squad dominated the East Region and reached the NCAA Championships round-of-16 five of the last nine seasons. Last year the Tribe defeated Temple and South Alabama at home in the first two rounds, before falling to third-ranked Duke at Gainesville in the Sweet Sixteen.

It was during the spring of 1997 that Kalbas earned his first victory in the round-of-16 as mentor of the Tribe. His team posted a 5-0 victory over fifth-ranked Georgia to earn a trip to the quarterfinals for the first time in school history. In 1998, the Tribe again advanced to the quarterfinals as it earned a 5-3 victory over sixth-ranked California in the round-of-16.

Although William and Mary can boast of team accomplishments at the NCAA Championships, numerous individuals and doubles teams have also had success at the NAAs. The first individual to represent the Tribe was Namratha Appa-Roa, who qualified in the singles draw in 1986. During the past 16 years, W&M has placed a member of the team in the singles draw of the NAAs 22 times while 14 teams qualified for the doubles championship.

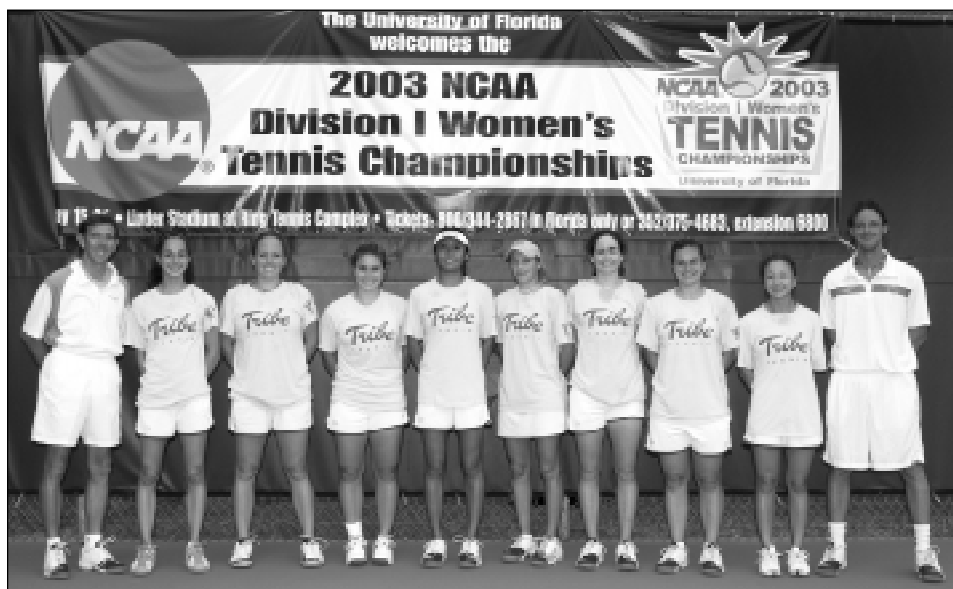
The Tribe saw its first NCAA All-American in 1991 when Kristine Kurth advanced



Last season **Candice Fuchs** competed at the NCAA singles and doubles championships.

to the second round. Julie Shiflet would pick up the honor in 1992 when she reached the round-of-16. Karen van der Merwe earned two of her three All-America honors in 1992 when she advanced to the round-of-16 on the singles side and teamed with Michele Mair to reach the round-of-16 on the doubles side. She added her third honor in doubles in '93 when she teamed with Katrin Guenther to reach the quarterfinals. Guenther would add another All-America honor in 1995 when she teamed with Lauren Nikolaus to reach the round-of-eight at the NAAs. Nikolaus would add a whopping five more All-America honors to the Tribe's trophy case as she captured the award in singles in 1996, 1997 and 1998 and in doubles with Johanna Sones in 1997 and Michelle O in 1998.

In all, eight different athletes have captured 17 All-America honors for William and Mary while 24 different athletes have represented the team in 36 events at the NAAs in either singles or doubles since 1986.



In 2003, the Tribe women's tennis team reached the Sweet Sixteen of the NCAA Tournament for the fifth time in the last nine seasons.

W&M in the NCAA Tournament

1989		
<i>First Round</i>		
5/10	vs. #16 San Diego State ¹	L 3-6
1990		
<i>First Round</i>		
5/9	vs. #13 South Carolina ¹	L 0-6
1991		
<i>First Round</i>		
5/8	vs. #14 Miami ²	L 3-6
1992		
<i>First Round</i>		
5/13	vs. #15 Miami ²	W 5-4
<i>Second Round</i>		
5/14	vs. #3 Texas ²	L 3-5
1995		
<i>Second Round</i>		
5/13	vs. #5 California ³	L 2-5
1996		
<i>East Regional</i>		
5/3	vs. Seton Hall ⁴	W 5-0
5/4	vs. #47 Virginia ⁴	W 5-0
5/5	vs. #24 Harvard ⁴	W 5-2
<i>First Round</i>		
5/18	vs. #7 Texas ⁵	L 4-5
1997		
<i>East Regional</i>		
5/9	vs. #53 Richmond ⁶	W 5-0
5/10	vs. #35 Brown ⁶	W 5-0
5/11	vs. #28 Harvard ⁶	W 5-3
<i>First Round</i>		
5/15	vs. #5 Georgia ²	W 5-0
<i>Quarterfinal</i>		
5/16	at #2 Stanford ²	L 0-6
1998		
<i>East Regional</i>		
5/15	vs. #53 Richmond ⁷	W 5-1
5/16	at #39 Virginia Tech ⁷	W 5-1
5/17	vs. #24 VA Commonwealth ⁷	W 5-3
<i>First Round</i>		
5/21	vs. #6 California ⁸	W 5-3
<i>Quarterfinal</i>		
5/22	vs. #4 Georgia ⁸	L 2-5
1999		
<i>Regional</i>		
5/15	Maryland-Baltimore County ⁹	W 6-0
5/16	#T20 Fresno State ⁹	L 3-5
2000		
<i>Regional</i>		
5/12	Loyola ⁹	W 5-0
5/13	#18 Tennessee ⁹	L 3-5
2002		
<i>Regional</i>		
5/11	vs. #40 Clemson ¹⁰	L 3-4
2003		
<i>Regional</i>		
5/9	Temple ⁹	W 4-0
5/10	#14 South Alabama ⁹	W 4-1
<i>Round of 16</i>		
5/15	#3 Duke ¹	L 0-5
1-Gainesville, FL		
2-Palo Alto, CA		
3-Malibu, CA		
4-Syracuse, NY		
5-Tallahassee, FL		
6-Providence, RI		
7-Blacksburg, VA		
8-South Bend, IN		
9-Williamsburg, VA		
10-Winston-Salem, NC		

Honors and Awards

Team Honors

- NCAA Appearances (12)**
 1989, 1990, 1991, 1992, 1995, 1996,
 1997, 1998, 1999, 2000, 2002, 2003
- National Indoors Appearances (10)**
 1990, 1991, 1992, 1995, 1996, 1997,
 1998, 1999, 2000, 2003
- No. 1 East Region Ranking (12)**
 1989, 1990, 1991, 1992, 1994, 1995,
 1996, 1997, 1998, 1999, 2000, 2002
- CAA Championships (16)**
 1986, 1987, 1988, 1989, 1990, 1991,
 1992, 1993, 1994, 1995, 1996, 1997,
 1998, 1999, 2000, 2002

Player Awards

- All-American**
- 1981** Marion Gengler
 Margie Waters
- 1982** Cheri Dow
 Marion Gengler
 Margie Waters
- 1991** Kristine Kurth (singles)
- 1992** Michele Mair (doubles)
 Julie Shiflet (singles)
 Karen van der Merwe (singles
 & doubles)
- 1993** Katrin Guenther (doubles)
 Karen van der Merwe
 (doubles)
- 1995** Katrin Guenther (doubles)
 Lauren Nikolaus (doubles)
- 1996** Lauren Nikolaus (singles)
- 1997** Lauren Nikolaus (singles &
 doubles)
 Johanna Sones (doubles)
- 1998** Lauren Nikolaus (singles &
 doubles)
 Michelle O (doubles)
- National Rookie of the Year**
1991 Kristine Kurth
- USTA Sportsmanship Award**
1997 Lauren Nikolaus
- Gladys H. Heldman Award**
1998 Lauren Nikolaus



1997 CAA Rookie of the Year Carolijn van Rossum won the national ITA/Arthur Ashe Award in 2000.



Lauren Nikolaus earned six All-America honors, was a three-time CAA Player of the Year and was named the ITA's National Senior Player of the Year in 1998.

National ITA/Arthur Ashe, Jr. Award

- 2000** Carolijn van Rossum
2002 Jessyca Arthur

National Senior Player of the Year

- 1998** Lauren Nikolaus

Regional Senior Player of the Year

- 1993** Karen van der Merwe
1997 Johanna Sones
1998 Lauren Nikolaus

Regional Sportsmanship Award

- 1992** Karen Gallego

Regional Rookie of the Year

- 1991** Kristine Kurth
1995 Lauren Nikolaus
1999 Delphine Troch
2003 Megan Muth

CAA Player of the Year

- 1989** Julie Kaczmarek
1990 Danielle Durak
1991 Kristine Kurth
1992 Julie Shiflet
1993 Karen van der Merwe
1995 Katrin Guenther
1996 Lauren Nikolaus
1997 Lauren Nikolaus
1998 Lauren Nikolaus
1999 Tari Ann Toro
2000 Carlijn Buis

CAA Rookie of the Year

- 1995** Lauren Nikolaus
1997 Carolijn van Rossum
1999 Delphine Troch
2002 Candice Fuchs
2003 Megan Muth

CAA Tournament MVP

- 1995** Katrin Guenther
1996 Johanna Sones
1997 Lauren Nikolaus
1998 Lauren Nikolaus
2000 Carlijn Buis

Mark H. McCormack Most Valuable Player Award

- 1993** Karen van der Merwe
1994 Johanna Sones
1995 Michelle O
1996 Lauren Nikolaus
1997 Johanna Sones
1998 Michelle O
1999 Tari Ann Toro
2000 Carlijn Buis
2001 Lindsay Sullivan
2002 Jessyca Arthur
2003 Candice Fuchs

Most Improved Player Award

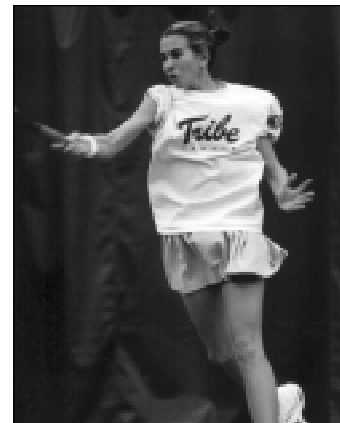
- 1993** Katrin Guenther and
 Shannon Blackwell
1994 Megan Coakley
1995 Johanna Sones
1996 Maya Klavora
1997 Christine Caltoom
1998 Carolijn van Rossum
1999 Lindsay Sullivan
2000 Jessyca Arthur
2001 Kari Olsen
2002 Amy Wei
2003 Nina Kamp

Best Attitude Award

- 1994** Christine Caltoom
1995 Michelle O
1996 Tari Ann Toro
1997 Carolijn van Rossum
1998 Maya Klavora
1999 Delphine Troch
2000 Kari Olsen
2001 Nina Kamp
2002 Melissa Reed
2003 Lingda Yang

Coach Awards

- National Coach of the Year**
1998 Brian Kalbas



Lindsay Sullivan, a four-time All-CAA selection, won the team's Most Valuable Player award in 2001.

ITA East Region Coach of the Year

- 1991** Ray Reppert
1995 Brian Kalbas
1998 Brian Kalbas
1999 Brian Kalbas
2002 Brian Kalbas

ITA East Region Assistant Coach of the Year

- 1997** Brian Fleishman
1999 Tyler Thomason

CAA Coach of the Year

- 1987** Ray Reppert
1991 Ray Reppert
1992 Ray Reppert
1995 Brian Kalbas
1996 Brian Kalbas
1999 Brian Kalbas
2002 Brian Kalbas
2003 Brian Kalbas

William and Mary Wins vs. the Top-10

In the past years William and Mary has enjoyed considerable success against the top women's tennis programs in the nation. Since 1995, the year when the Tribe defeated top-ranked and defending team indoor, NCAA outdoor and ITA indoor champion Georgia in Athens (the first time the Bulldogs had lost at home in 25 consecutive matches), 14 top-10 teams have fallen to the Green and Gold.

2002	Jan. 26	#9 Northwestern	W 6-1
2000	Feb. 9	#5 Duke	W 5-4
1999	Jan. 29	#2 Duke	W 5-4
1998	Feb. 14	#4 Texas	W 5-4
	Feb. 19	#2 UCLA	W 6-3
	April 5	#10 Wake Forest	W 5-4
	May 15	#6 California	W 5-3
1997	Feb. 2	#3 Duke	W 5-4
	March 2	#6 Mississippi	W 5-4
	March 9	#7 Pepperdine	W 6-3
	May 15	#5 Georgia	W 5-0
1996	April 5	#9 Wake Forest	W 6-3
1995	Feb. 10	#7 Kansas	W 6-3
	April 11	#1 Georgia	W 5-4



Jessyca Arthur recorded upset wins in both singles and doubles in 2002 to lead W&M to a win over No. 9 Northwestern.

Records

Career Records

Singles Victories

1. Lauren Nikolaus	1994-98	137-46
2. Michelle O	1994-98	132-53
3. Johanna Sones	1993-97	117-49
Carolijn van Rossum	1996-00	117-64
5. Tari Ann Toro	1995-99	111-48
6. Lindsay Sullivan	1997-01	103-49
7. Jessyca Arthur	1998-02	95-62
Katrin Guenther	1991-95	95-47
9. Christine Caltoom	1993-97	89-45
Marion Gengler	1980-84	89-45

Singles Winning Percentage (Minimum 50 Matches)

1. Karen van der Merwe	1990-93	78-21 (.788)
2. Kirsten Caister	1986-90	84-23 (.785)
3. Karen Gallego	1989-92	55-17 (.764)
4. Amy Wei	2001-	53-17 (.757)
5. Lauren Nikolaus	1994-98	137-46 (.749)
6. Margie Waters	1980-82	38-15 (.717)
7. Cherie Dow	1981-83	43-17 (.717)
8. Michelle O	1994-98	132-53 (.714)
9. Danielle Durak	1986-90	82-33 (.713)
10. Michelle Mair	1990-92	37-15 (.712)

Doubles Victories

1. Johanna Sones	1993-97	107-36
2. Lauren Nikolaus	1994-98	105-36
3. Chris Mast	1978-82	102-47
4. Michelle O	1994-98	98-45
5. Tari Ann Toro	1995-99	96-27
6. Kari Olsen	1999-03	91-43
7. Jessyca Arthur	1998-02	88-45
8. Julie Kaczmarek	1985-89	86-43
9. Katrin Guenther	1991-95	83-25
10. Kirsten Caister	1986-90	79-23
Danielle Webster	1986-90	79-37

Johanna Sones



Doubles Winning Percentage (Minimum 40 Matches)

1. Tari Ann Toro	1995-99	96-27 (.780)
2. Kirsten Caister	1986-90	79-23 (.775)
3. Katrin Guenther	1991-95	83-25 (.769)
4. Johanna Sones	1993-97	107-36 (.748)
5. Lauren Nikolaus	1994-98	105-36 (.745)
6. Karen Dudley	1980-84	64-22 (.744)
7. Elizabeth O	1996-00	37-13 (.740)
8. Nina Kamp	1999-03	61-22 (.735)
9. Candice Fuchs	2001-	47-17 (.734)
Deb Herring	1988-92	47-17 (.734)

Season Records

Singles Victories

1. Michelle O	1996-97	39-16
2. Tari Ann Toro	1998-99	37-11
Lauren Nikolaus	1997-98	37-14
Tari Ann Toro	1996-97	37-12
5. Nina Kamp	2002-03	36-11
Lindsay Sullivan	1998-99	36-11
Carolijn van Rossum	1996-97	36-11
8. Lauren Nikolaus	1994-95	35-8
9. Katrin Guenther	1992-93	34-8
10. Lauren Nikolaus	1996-97	33-13
Michelle O	1995-96	33-15



Singles Winning Percentage (Minimum 20 Matches)

1. Kari Olsen	2002-03	26-4 (.867)
2. Julie Shiflet	1991-92	29-5 (.853)
3. Danielle Durak	1988-89	27-5 (.844)
4. Caroline Gaskin	1983-84	20-4 (.833)
5. Amy Wei	2002-03	30-6 (.833)
6. Karen Gallego	1990-91	24-5 (.828)
Kirsten Caister	1986-87	24-5 (.828)
8. Michelle O	1994-95	28-6 (.824)
9. Karen van der Merwe	1991-92	32-7 (.821)
10. Lauren Nikolaus	1994-95	35-8 (.814)

Doubles Victories

1. Johanna Sones	1996-97	32-10
2. Lauren Nikolaus	1996-97	31-7
Katrin Guenther	1994-95	31-6
Lauren Nikolaus	1994-95	31-6
5. Tari Ann Toro	1997-98	30-9
Anne Shoemaker	1981-82	30-4
Chris Mast	1980-81	30-11
Margie Waters	1980-81	30-11
9. Jessyca Arthur	2001-02	29-10
Michelle O	1997-98	29-15

Doubles Winning Percentage (Minimum 20 Matches)

1. Anne Shoemaker	1981-82	30-4 (.882)
2. Tari Ann Toro	1996-97	24-4 (.857)
3. Kirsten Caister	1988-89	22-4 (.846)
Deb Herring	1988-89	22-4 (.846)
5. Namratha Appa-Rao	1986-87	26-5 (.839)
6. Katrin Guenther	1994-95	31-6 (.838)
Lauren Nikolaus	1994-95	31-6 (.838)
8. Kirsten Caister	1986-87	28-6 (.824)
9. Marion Gengler	1981-82	23-5 (.821)
10. Karen Dudley	1981-82	27-6 (.818)

Freshman Records

Singles Victories

1. Carolijn van Rossum	1996-97	36-11
2. Lauren Nikolaus	1994-95	35-8
3. Megan Muth	2002-03	32-12
Julie Kaczmarek	1985-86	32-11
5. Jessyca Arthur	1998-99	31-12
6. Johanna Sones	1993-94	30-8
7. Delphine Troch	1998-99	29-14
Annette Oosters	1997-98	29-14
Julie Shiflet	1991-92	29-5
10. Michelle O	1994-95	28-6
Christine Caltoom	1993-94	28-10
Megan Coakley	1993-94	28-7

Singles Winning Percentage (Minimum 20 Matches)

1. Julie Shiflet	1991-92	29-5 (.853)
2. Caroline Gaskin	1983-84	20-4 (.833)
3. Kirsten Caister	1986-87	24-5 (.828)
4. Michelle O	1994-95	28-6 (.824)
5. Lauren Nikolaus	1994-95	35-8 (.814)
6. Megan Coakley	1993-94	28-7 (.800)
7. Johanna Sones	1993-94	30-8 (.789)
8. Chris Mast	1978-79	22-6 (.786)
9. Kristen Kurth	1990-91	25-7 (.781)
10. Carolijn van Rossum	1996-97	36-11 (.766)

Doubles Victories

1. Lauren Nikolaus	1994-95	31-6
2. Kirsten Caister	1986-87	28-6
Chris Mast	1978-79	28-4
4. Amy Wei	2001-02	26-12
Karen Dudley	1980-81	26-8
Johanna Sones	1993-94	26-9
7. Lingda Yang	2002-03	25-12
Danielle Webster	1986-87	25-15
9. Jessyca Arthur	1998-99	23-7
Michelle O	1994-95	23-8



Doubles Winning Percentage (Minimum 20 Matches)

1. Deb Herring	1988-89	22-4 (.846)
2. Lauren Nikolaus	1994-95	31-6 (.838)
3. Kirsten Caister	1986-87	28-6 (.824)
4. Shawn Arrowsmith	1993-94	19-5 (.792)
5. Nina Kamp	1999-00	22-6 (.786)
6. Candice Fuchs	2001-02	21-6 (.778)
7. Annette Oosters	1997-98	17-5 (.773)
8. Jessyca Arthur	1998-99	23-7 (.767)
9. Karen Dudley	1980-81	26-8 (.765)
10. Tari Ann Toro	1995-96	16-5 (.762)

ITA Women's Collegiate Tennis Hall of Fame

The ITA Women's Collegiate Tennis Hall of Fame was created to celebrate the milestones in women's collegiate tennis, from the early struggles for recognition to the achievement of full-fledged intercollegiate competition. Established by the Intercollegiate Tennis Association, the Hall of Fame is operated by the College of William and Mary and is housed in the McCormack-Nagelsen Tennis Center on the William and Mary campus.

The Hall of Fame aspires to preserve the history and further the development of women's intercollegiate tennis through the collection of printed materials, trophies, photographs, equipment and other significant items.

Each year, the Hall of Fame enshrines exceptional players, coaches and contributors in women's intercollegiate tennis. The ITA Hall of Fame Committee selects inductees from the following categories:

- Outstanding collegiate players
- Players who attended college and had a significant impact on women's tennis
- Outstanding collegiate coaches
- Individuals or corporations playing a major role in the development of women's intercollegiate tennis



Millie West serves as the curator of the ITA Women's Collegiate Tennis Hall of Fame. An integral part of William and Mary athletics for more than 40 years, she is currently Director of Special Projects for W&M, after retiring in 1991 as the College's Associate Athletics Director. West also served as Women's Athletics Director and coached both tennis and swimming in her tenure.

A highly successful fundraiser, she has been a key in the success of the four BASF

Wightman Cup tennis tournaments held at the College, as well as the annual Joseph J. Plumeri/W&M Pro-Am golf tournament which has reaped great benefits for the Tribe. West coordinated W&M's Indoor Tennis Center Project, which brought the state-of-the-art McCormack-Nagelsen Tennis Center to the Williamsburg campus. She was inducted into the ITA Women's Collegiate Tennis Hall of Fame in 1998, and has also been selected to the William and Mary and Mid-Atlantic Tennis Hall of Fame.

A 1957 graduate of Georgia College, West received that school's Alumni Achievement Award. She serves on executive committees for the Virginia Sports Hall of Fame and Williamsburg Community Health Foundation and is a member of the Old Point National Bank Advisory Board.

Contact the Hall of Fame

705 South Henry Street
Williamsburg, VA 23187

Phone: (757) 221-3331

Fax: (757) 221-1730

Email: mbwest@aol.com

Web Site: www.ITAHallofFame.com

ITA Women's Collegiate Tennis Hall of Fame Inductees

1995

Pauline Betz Addie
Althea Gibson
Doris Hart
Shirley Fry Irvin
Billie Jean King
Helen Lewis
Betsy Nagelsen McCormack
Mark Hume McCormack
Dr. Anne Pittman
Hazel Hotchkiss Wightman

1996

Margaret Varner Bloss
E. Marguerite Chesney
Louise Brough Clapp
Margaret Osborne duPont
Helen Hull Jacobs
Dr. Joan D. Johnson
Eve F. Kraft
Helen Wills Moody Roark

1997

Lois Blackburn Bryan
Donna Floyd Fales
Carole Caldwell Graebner
Darlene Hard
Virginia Mack

1998

Florence 'Flo' Blanchard
Dorothy Bundy Cheney
Gladys M. Heldman
Julie M. Heldman
Margaret 'Peggy' Michel
Mildred B. West

1999

Janet Hopps Adkisson
Tory Ann Fretz
Nancy Pearce Jeffett
Fern 'Peachy' Kellmeyer

2000

Julie Anthony
Emilie Burrer Foster
Jane Albert Willens
Patricia Henry Yeomans

2002

Pam Richmond Champagne
Laura DuPont
Ann Valentine
Betty Rosenquest Pratt
Nancy Reed
Jeanne Arth

Student-Athlete Support

Goals

We take pride in the many achievements of William and Mary athletes, both in the classroom and on the playing field. These support services and many others are in place to help each student-athlete achieve their goals. It is our hope that at the completion of their undergraduate career they can reflect upon:

1. An academic experience that prepared them for a successful career.
2. An athletic challenge that brought many rewards.
3. A feeling of loyalty and pride in identifying themselves as a varsity athlete with a degree from The College of William and Mary.

Compliance and Academic Support

As members of the Colonial Athletic Association and NCAA Division I, the College is committed to full compliance with all NCAA and conference regulations. The department has a fulltime Director of Compliance committed to assisting students, staff and coaches through education and monitoring of compliance issues.

All entering students are assigned to a faculty academic advisor assigned by the Director of Academic Advising. Students remain with this advisor until their sophomore year at which time they select a faculty advisor in their chosen major.

Within the athletic department, the Academic Support Coordinator is a valuable resource for student-athletes serving in a liaison role with the various student service offices throughout the campus community. The College has offices for Volunteer Services, Career Services, a Writing Resource Center and Oral Communication Studio, to name a few.

The department offers a variety of study, life and career building skills programs, but holds firm to the concept of self-determination—each student must take responsibility for his or her collegiate experience. Our goal is to assure that there is a support system in place to assist students to make positive and informed decisions.

Strength, Speed and Conditioning

Tribe athletics is very proud of the Joseph W. Montgomery Strength Training Center, a 5,000 square foot weight training facility. Under the guidance of the Head and Assistant Strength Coach each sport is provided with a program designed to enhance individual strength and flexibility development specific to the skills and movements required for their sport. Individuals are educated on proper lifting techniques and workouts are monitored to assure safety at all times.

Sports Psychology

The athletic department has on staff a sports psychologist, who holds a Ph.D. in sports psychology. All consultations are confidential and all student-athletes, teams or coaches are welcome regardless of the issues they wish to discuss.

Consultation is available for sport psychology education, performance enhancement skills training, strategies for dealing with stress or injury, or for personal issues that may affect performance. The sports psychology consultant is considered a member of the Counseling Center and refers individuals to the Center when appropriate.



Sports Medicine

The Division of Sports Medicine provides a comprehensive health care program for the department of intercollegiate athletics. The staff consists of a team physician, six fulltime certified athletic trainers, graduate and undergraduate student trainers and medical specialists from the local community. The College is also in the process of evaluating and pursuing CAAHEP accreditation of its entry-level athletic training education program. The team physician has overall responsibility for supervision of the sports medicine program.

The priority for the athletic training staff is to enhance and assure lines of communication and cooperation among its staff, student-athletes, parents, coaches, the Student Health Center and involved medical specialists. Through a team approach to health care the sports medicine program can offer comprehensive health care services to the student-athletes in a caring and cooperative manner.



Facilities

The College of William and Mary and its student-athletes take a great deal of pride in the quality of its athletic facilities. Over the last several years, the College has bolstered its lineup of venues to match the success that the Tribe has shown in the athletic arena, which has been unmatched in the Colonial Athletic Association. William and Mary boasts some of the finest athletic arenas in the nation, from its newest venue, Albert-Daly Field, to the oldest, Walter J. Zable Stadium at Cary Field, a campus landmark since 1935. The College is committed to providing the student-athlete the most enjoyable and rewarding atmosphere possible.



- Home of the Tribe's field hockey team
- Made possible by a generous grant from the Anheuser-Busch Corporation
- Playing surface is a unique combination of a poured pad with an AstroTurf playing surface
- Seats over 2,200
- State-of-the-art computerized lighting system and an elevated press box



- New home of the Tribe men's and women's soccer and lacrosse teams, slated to open in 2004.
- Made possible by a generous grant from the Mr. and Mrs. Jim Ukrop
- Natural grass playing surface
- Named after longtime Tribe soccer coaches Al Albert and John Daly



- Home of the Tribe's tennis teams
- Six indoor courts
- Houses the ITA Women's Tennis Hall of Fame
- Mezzanine and Stadium seating areas
- Built with a gift from W&M graduate Mark McCormack and his wife Betsy Nagelsen
- State-of-the-art lighting system and scoreboard

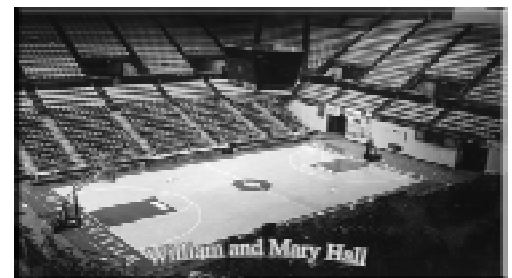


- Home of Tribe baseball-made possible by a generous grant from Joe Plumeri
- Seating for over 1,000
- Indoor and outdoor batting cages
- Lighting for night games
- Locker room, box seats and concessions



- Home of the Tribe's tennis teams for the outdoor season
- One of the College's newest venues, completed in September, 2001
- Eight individual hard court surfaces
- Features California Corners, a unique design that includes quarter fences that run along the sidelines to allow uninterrupted play
- Stadium seating for approximately 500
- State-of-the-art lighting system to accommodate night matches

- Home of the Tribe's football and track and field teams
- Campus landmark since 1935
- Seating for more than 13,000
- Eight-lane 400 meter track surrounds the field and is home to the prestigious Colonial Relays
- Joseph Montgomery football practice facility is located adjacent to the stadium



- Home of the Tribe's basketball, gymnastics and volleyball teams
- Seats over 8,500
- Three-level building includes 12 locker room areas, a spacious training room, 5,000 square foot weight room and a gymnastics training center
- The concourse and lower levels house administrative and coaching staff offices

Tribute to Mark McCormack



William and Mary Reflects on the Life of Mark McCormack

“Mark McCormack was truly an honored son of the College. Few individuals in the course of their lifetime have the chance to see and feel and know the influence they have had on the quality and character of an institution. Mark’s influence on William and Mary can be seen not only in the physical buildings he made possible by his generosity, but in the highest level of excellence he expected from his alma mater and from those of us fortunate enough to call him a friend.”

—W&M President Timothy J. Sullivan

“Obviously his loss is enormous, to both the athletics department and the general campus community. He was an icon and a founder of an industry and his generosity touched many within the W&M community. What made Mark even more special was, despite his hectic schedule, he always found the time to show a special interest in the lives of our student-athletes and took the time to establish lasting personal relationships.”

—W&M Director of Athletics Terry Driscoll

“There is no way that I can adequately express the loss of a person like Mark McCormack. He was a devoted contributor of time, resources and talent to the College of William and Mary, and especially the men’s and women’s tennis programs.

—W&M Director of Special Projects Millie West

William and Mary lost a favorite son on May 16, 2003, with the death of **Mark Hume McCormack** a 1951 graduate of the College. McCormack had been in coma since January after suffering a heart attack. Named by ESPN as one of the century’s most influential people in the business of sport, he revolutionized the world of sports marketing with the founding of International Management Group (IMG).

“Personally, the area that impressed me most about Mark McCormack was that he always wanted to blend in and not stand out. He came to the tennis center he built for our program and would just want to watch, he wasn’t out to call attention to himself or make himself look impressive. Professionally, he was the W&M men’s tennis program. He donated the money and vision to build the best tennis center in the nation, but he also gave the program much more in terms of his time and interest in its progress and success.”

—W&M Head Men’s Tennis Coach Peter Daub

A devoted and dedicated supporter of Tribe athletics, he and his wife, Betsy Nagelsen founded W&M’s McCormack-Nagelsen Tennis Center, endowed a tennis scholarship and were continuing sponsors of the ITA Women’s Tennis Hall of Fame. Also a member of W&M’s Board of Visitors, McCormack chaired the College’s fund-raising campaign in 1993 that raised \$153 million and was the honorary chair of the College’s current \$500 million campaign.

“There are not enough words to describe what Mark McCormack has done for me and the W&M women’s tennis program. His generosity and support played a direct role in all of our team’s successes. One of the many traits that I truly admired was his ability to treat everyone with respect and make them feel special and appreciated.”

—Former W&M Head Women’s Tennis Coach Brian Kalbas



Mark McCormack with W&M’s Director of Special Projects Millie West and President Timothy J. Sullivan.



Mark McCormack provided the funding for the McCormack-Nagelsen Tennis Center, one of the finest indoor college tennis facilities in the nation.



2003-04 Women's Tennis Team

Back (Left to Right): Head Coach Kevin Epley, Assistant Coach Jon Reeves, Emily Mowery, Megan Moulton-Levy, Alex de Guzman, Amy Wei.

Front (Left to Right): Kate Boomershine, Lena Sherbakov, Lingda Yang, Candice Fuchs, Kristen Dunbar, Megan Muth.

2004 William and Mary Women's Tennis Schedule

Jan. 18	GEORGE WASHINGTON	9:00 AM	Mar. 11	at Florida	5:00 PM
Jan. 18	RICHMOND	2:30 PM	Mar. 15	SOUTH ALABAMA	4:00 PM
Jan. 24	TEXAS	1:00 PM	Mar. 17	OKLAHOMA	4:00 PM
Jan. 25	NORTHWESTERN	11:00 AM	Mar. 21	BOSTON UNIVERSITY	10:00 AM
Jan. 31-Feb. 1	at Minnesota Invitational		Mar. 30	at Maryland	2:30 PM
Feb. 5-8	ITA National Team Indoors \$		Apr. 4	at Old Dominion *	1:00 PM
Feb. 14	LOYOLA MARYMOUNT	10:00 AM	Apr. 10	NOTRE DAME	11:00 AM
Feb. 14	TEMPLE	4:00 PM	Apr. 14	VA COMMONWEALTH *	3:00 PM
Feb. 22	PENNSYLVANIA	10:00 AM	Apr. 17	at Virginia Tech	10:00 AM
Feb. 22	JAMES MADISON *	3:00 PM	Apr. 17	vs. East Tennessee State %	3:00 PM
Feb. 27	WAKE FOREST	5:00 PM	Apr. 22-25	CAA Tournament	
Feb. 29	OHIO STATE	9:30 AM	May 14-16	NCAA Tournament Regionals	
Mar. 3	at North Carolina	4:00 PM	May 20-23	NCAA Team Tournament Finals	
Mar. 7	at South Florida	2:00 PM	May. 24-29	NCAA Individual Tournament	
Mar. 9	at Miami (FL)	6:00 PM			

Home matches in **BOLD CAPS**. All times Eastern.

* Colonial Athletic Association match; \$ at Wisconsin; % at Virginia Tech

This schedule is subject to change. Please check the Internet at www.TribeAthletics.com for the most recent schedule.