

# GRAND SLAM FUN, GRAND SLAM PROFITS



**Williams®**

# GRAND SLAM

2-PLAYER

REPLAY MODEL

with

EXTRA INNING FEATURE  
AND OVER-THE-FENCE HOME RUNS



Players actually run the bases with William's patented base runner unit

Mystery pitcher throws fast ball and curve balls... inside-outside pitches

Hitting all targets scores extra inning

Grand slam home run lights up letters in name

**New**  
**IMPROVED**

Pitching Unit  
Batting Unit  
Motor Unit

## REPLAYS FOR

- High Score
- Grand Slam Home Run by hitting "bulls-eye" target
- Spelling name of game (adjustable 2 or 5)

"10th INNING"  
NOVELTY  
MODEL  
ALSO  
AVAILABLE



**Williams®** ELECTRONIC MANUFACTURING CORP.  
4242 W. FILLMORE ST. • CHICAGO 24, ILLINOIS

Cable Address: WILCOIN, CHICAGO... NEVADA 2-4900

When you buy a baseball game—buy Williams



Available in  
single or twin  
coin chutes

- ✓ Latch-lock playfield
- ✓ Larger cash box
- ✓ New drum units
- ✓ Plastikote finish playfield for longer wear
- ✓ Stainless steel trim
- ✓ Multicolored cabinet

## Meeting Dates and Trade Events

### MAY

- 25-28 National Restaurant Association and American Motor Hotel Association, Annual Convention  
Place: McCormick Place, Chicago, Ill.
- 26 National Automatic Merchandisers Association, Executive Committee  
Place: Chicago
- 27 New Jersey Operators Council  
Place: The Brunswick Inn, East Brunswick, N.J.
- 28 National Association of Concessionaires, Midyear Board Meeting  
Place: Sheraton-Blackstone Hotel, Chicago

### JUNE

- 5-7 Coin-Operated Industry of Nebraska, Annual Meeting  
Place: Paxton Hotel, Omaha, Neb.
- 5-7 California Automatic Vendors Association  
Place: Mark Thomas Inn, Monterey, California
- 6 Wisconsin Automatic Merchandising Council  
Place: Park Motor Inn, Madison, Wisconsin
- 6 1964 U.J.A. Coin Division Victory Dinner  
Place: Statler Hilton Hotel, New York City
- 7-10 National Confectioners Association  
Place: Americana Hotel, New York City
- 13 Massachusetts Automatic Merchandising Council  
Place: Dinkler Plaza Hotel, Atlanta, Georgia
- 16 Music Operators of New York Quarterly Meeting (General)  
Place: To Be Announced
- 18 National Association of Coin Laundry Equipment Operators, Inc.  
Place: Beverly-Hilton Hotel, Los Angeles, Calif.
- 18-20 Indiana Tobacco-Candy Distributors & Vendors, Inc.  
Place: Claypool Hotel, Indianapolis, Ind.
- 20-23 Southern Wholesale Tobacco and Candy Association, Inc.  
Place: Dinkler Plaza Hotel, Atlanta, Georgia
- 21 Music & Vending Association of South Dakota  
Place: Lieberman Music Co., Minneapolis, Minn.
- 22-25 Catholic Hospital Association, Convention  
Place: New York Hilton, N.Y.C.
- 26-28 Cigarette Merchandisers Association, Inc.  
Place: Laurels Country Club, Sackett Lake, Monticello, N.Y.

### AUGUST

- 2-4 National Candy Wholesalers Association  
Place: Sheraton Park Hotel, Washington, D.C.
- 3-5 American Management Association  
Place: 135 W. 50th St., N.Y.C.
- 24-26 National Association of Concessionaires Eastern Regional Conference  
Place: Mayflower Hotel, Plymouth, Mass.
- 26-30 National Automatic Laundry & Cleaning Council  
Place: N. Y. Coliseum (exhibits); Baiton-Plaza (meetings), New York City

### SEPTEMBER

- 24-26 Michigan Tobacco & Candy Distributors and Vendors Association  
Place: Statler-Hilton Hotel, Detroit, Mich.
- 24-26 Texas Merchandising Vending Association—Texas and Oklahoma Tobacco Distributors (joint meet)
- 25-27 Music Operators of America Annual Meeting  
Place: Nevele Hotel, Ellenville, N.Y.
- 27-Oct. 2 National Association of Concessionaires  
Place: Conrad Hilton Hotel, Chicago, Ill.
- 28-Oct. 1 Motion Picture & Concessions Industries Trade Show  
Place: Conrad Hilton Hotel, Chicago, Ill.

### OCTOBER

- 14-16 Music Operators of America  
Place: Sherman House, Chicago, Ill.
- 17-20 National Automatic Merchandising Assoc. Convention  
Place: McCormick Place, Chicago, Ill.



Presents

**YOUR GREATEST PROFIT OPPORTUNITY for 1964**  
—DELUXE 6-POCKET  
and BUMPER POOL®  
—The Dependable Tables!

See Your Distributor or Write.  
Complete Selection Parts and Accessories.

**VALLEY SALES CO.**  
333 Morton St. Bay City, Michigan

## KEENEY'S ALL-NEW COLORAMA

the DIFFERENT  
2-PLAYER  
FLIPPER GAME!

See your Distributor  
or contact

**J. H. KEENEY & CO., Inc.**

2600 W. 50th St., Chicago 32, Ill.  
Phone: HEMlock 4-5500

## Scopitone Featured At West Side Club

NEW YORK—Mister 'J's', a posh cabaret located on West 50th St. in Manhattan, is currently conducting an advertising program, using as its feature attraction, the Scopitone film machine, which has been placed in the niter by Al Miniaci of Paramount Vending. One of the ads says, "people

are flocking to Mister 'J's' to see the fabulous French-import Scopitone—a combination juke box video screen. According to the hatcheck girl, in assessing the success of the machine, "it's been running more than it hasn't."

## WURLITZER 2800

Makes the Swing to  
Higher Earnings

## August 3rd Set Aside For Trimount Day

BOSTON—On Monday, August 3rd, approximately 400 friends and business associates of Dave Bond and his Trimount Automatic Sales Company will descend upon the Blue Hills Country Club in Canton for the anxiously anticipated 1924-1964 Trimount-Bond 40th Anniversary celebration. In order to accommodate the large number of operators and friends, and guarantee the best time ever, Bond advised that they take over the entire Blue Hills Club for the one-day outing.

Highlighting the celebration will be the redemption of 'gift points' gathered between January 1st and July 1st, 1964 by operator-customers of Trimount, for such prizes as television sets, radios, and other household appliances.

According to Bond, who initiated the 'gift point' program, each time an operator purchased a new piece of equipment from Trimount (before July 1st) he earns one point for every dollar spent for the equipment, redeemable for gifts the day of the outing. The number of points gathered will determine the value of the gift. Every operator who purchases or has already purchased \$1,000 worth of new equipment (or more), Bond said, will automatically be invited to the outing.

Operators will also have two additional opportunities to win prizes—at the door prize drawing and at the grand prize drawing of gift-stubs also gained by operators from the purchase of equipment. Also among the many events and activities planned for the grand outing will be a golf tournament, swimming, cocktails, a shore dinner, and as Bond has said, "good fellowship and a lot of fun."

A display of the gifts for which the points are redeemable the day of the celebration will shortly be set up in the Trimount showroom, Bond advised, and operators may make their selections now, depending upon the number of points they have collected. However, those hoping to win a door prize must be present the day of the outing or forfeit their stubs.

With the gift point redemption and other activities to be conducted next August 3rd, the 40th Anniversary celebration should prove to be an overwhelming success. Says Bond, "we expect this to be the greatest time that the New England operators have ever had." The operators will do everything to prove him correct.

## Miller Tells Ops They Get What They Pay For

OAKLAND, CALIF.—"The operator is only going to get from his association what he is willing to pay for," is the way George Miller summarizes association benefits to operators resulting from paid membership. The comment was in reference to the recent per-machine tax passed on vending machines in the City of Buffalo. Buffalo vending operators formed an association the week the ordinance was passed and will fight the ruling (CB May 16, 23).

"The license which was recently passed in Buffalo could have probably been avoided if it were not for the complacency of the operators," said Miller in a statement last week. Miller heads the California Music Merchants Association here, a statewide coin machine association.

Miller said that City, County and State officials must be informed of the minimum profits that are derived from business and must be acquainted with the members of the associations. "If you are to have the public relations between various governments and the coin machine industry, the officials should personally know the leaders of this industry," said Miller.

Cash Box—May 30, 1964

# OUR FACE IS RED!

We scheduled production of twice as many SKY DIVERS as MONTE CARLO and thought maybe we had our neck out. But again the assembly lines were drained while orders continued to pour in. We are very sorry to disappoint our many friends who did not get their SKY DIVERS. Please don't be mad...get MAD WORLD (see ad below) and be glad!

GET NEW *Bally* 2-PLAYERS

# MAD WORLD



Comical, colorful backglass and clever off-center playfield layout get immediate attention. Fast, exciting action... insured by exclusive Bally actionizing features... strong last-ball suspense, and "came-close-try-again" play-appeal keep players coming back, keep coins tinkling into the MAD WORLD cash-box.

## FREE-BALL ALLEY STIMULATES REPEAT-PLAY

Ball shot through Free-Ball Gate remains in Free-Ball Alley, from player to player and from game to game... getting closer and closer to final escape. Players in duo competition "cash in" on each other's skill, and, if they quit with a ball in the Alley other players are quick to try for the "left-over" ball. Location tests prove MAD WORLD Free-Ball Alley to be the strongest carry-over idea ever built into a 2-players game.

NEW DIVIDED  
COIN-BOX

NEW E-Z OUT  
BACKGLASS

ALL METAL  
BACK-DOOR

MATCH FEATURE

Get the most for your money with Ballygames. Rugged construction...brilliant colors...sleek styling...thrilling action...smooth trouble-free performance, all add up to high earning-power, lowest operating cost, top resale value. Get MAD WORLD working for you today.

See your distributor or write BALLY MANUFACTURING COMPANY • 2640 BELMONT AVENUE, CHICAGO 18, ILLINOIS, 60618, U. S. A.

**FOR THE FIRST TIME...  
A REALISTIC GOLF GAME UNDER GLASS**

# Little Pro

Pres Struve, salty skipper of Struve Distributing Company, Denver and Salt Lake, says:

"Machines may come, machines may go—but my vote goes to Little Pro!"

## A GAME OF SKILL!

Player turns "Little Pro" toward lighted hole. Player controls "Little Pro's" stroke with "hard" or "easy" button. Player strives to finish all 9 holes in par or under.

ADJUSTABLE  
EXTENDED  
PLAY



**10¢ PLAY**

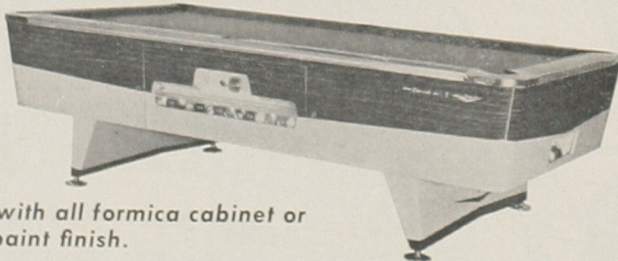
Manufactured by  
**SOUTHLAND  
Engineering, Inc.**  
"THE HOUSE OF ORIGINAL IDEAS"  
1657 Euclid St., Santa Monica, Calif.  
Telephone: EXbrook 3-3724

## SUPERLATIVE!

The only word to describe the

**NEW, DELUXE Eldorado FOR 1964**

- Mark I  
77" x 45"
- Mark II  
85" x 47"
- Mark III  
92" x 52"
- Mark IV  
105" x 57"
- Mark V  
114" x 64"



Available with all formica cabinet or standard paint finish.

- NEW Streamlined, flush ball drawer. No underhang.
- NEW! Balls release to rackers' end. Speeds up game.
- NEW! Five inch chrome plated leg levelers. Table can be leveled without lifting.

See the complete line at your distributor's now!

Irving Kaye Co. Inc.

363 Prospect Place Brooklyn 38, N. Y.

STerling 3-1200

Exclusive Chicago Area  
Distributors for WURLITZER  
PHONOGRAPHS and PARTS

**IMPORTERS—**  
Send for **FREE**  
LATEST CATALOG  
64 PAGES—Fully Illustrated

**FIRST** COIN MACHINE EXCHANGE, INC.

Joe Kline • Cable: "FIRSTCOIN"—Chicago  
1750 W. NORTH AVE. • CHICAGO 22, ILLINOIS • Dickens 2-0500

## Williams Releases 'San Francisco' 2-Plyr. Pin, Has 'Moving Arrow'

CHICAGO—Sam Stern, president of Williams Electronic Manufacturing Corporation, in this city, asserted this past week that greater demands in the coin machine markets of the world for Williams amusement equipment has sparked the introduction this week of another new flipper-skill game. Last week (May 23 issue of *Cash Box*) the Chicago based firm released a new single-player Add-A-Ball, "Palooka," to the coin machine trade. This newest Williams Electronic creation—"San Francisco"—is a two-player amusement game, with adjustable three or five ball play.

Several exciting innovations incorporated into "San Francisco" are being roundly hailed by Stern and Williams Electronic sales manager Jack Mittel as important new Williams features, "geared to attract considerably more play. And, of course, a far greater profit potential."

Stern added: "We must not overlook the fact that Williams Electronic Mfg. now has quite an interesting array of amusement games being distributed in most coin machine markets throughout the world—such as, 'San Francisco,' two-player; 'Palooka,' single-player; and, 'Grand Slam,' baseball amusement game.

### OOPS!

CHICAGO — An announcement story on the new Williams single-player pingame "Palooka" carried a headline on page 62 of the May 23rd issue of *Cash Box* which stated incorrectly that the game was a two-player. "Palooka" is a single-player machine which features a drum-type scoring unit in the backbox, a new motor design for improving scoring, five drop targets, three jet bumpers and two flippers. The amusement machine also has an add-a-ball feature.

Williams Electronic Manufacturing Corporation released its new two-player pingame last week. Details of the new two-player—"San Francisco"—appear elsewhere on this page.

"Although 'San Francisco' is loaded with exciting playing and scoring skill features we cannot overlook the attraction contained in the competitive play feature in a well designed, planned and constructed two-player machine."

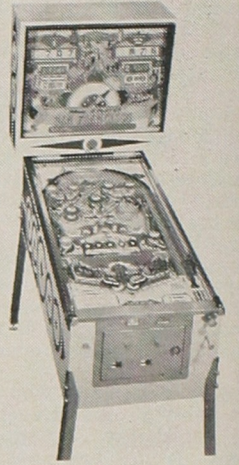
In continuing Stern revealed a novel feature on the very colorful backglass—a "moving arrow" which lights up corresponding buttons on the playfield. Every lighted button increases the center hole value an additional 100 points.

## Redd Opens Record One-Stop

WATERTOWN—The Redd Distributing Company, Inc., Wurlitzer distributors, announced the opening, last week, of its new, one-stop phonograph record division. The one-stop is designed, according to Redd officials, to cater to the needs of the juke box operator to whom "time is money."

The company has added Bill Thompson to its staff. Thompson was formerly with RCA Victor Records, and according to the Redd officials, "brings to our one-stop record location division, sixteen years of experience in all phases of music, radio disc-jockey, and retail and wholesale distribution.

Redd has invited all persons to visit their new facilities at Watertown. They are particularly proud of their repair department, which they say is "extensive," and their parts department, which they contend is "well stocked." Their showrooms feature equipment manufactured by Wurlit-



WMS. SAN FRANCISCO

In the action on the playfield there are replays for high score and the Williams "Number Match" feature. Six bumpers and two skill targets on the playfield move the arrow (on the backglass). Furthermore, two eject holes also cause the arrow to move.

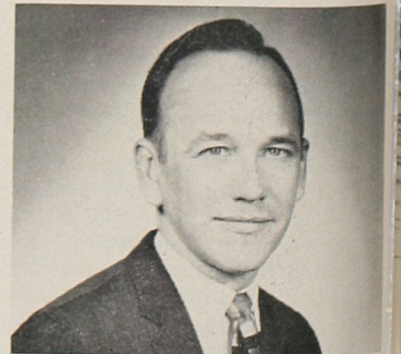
The top rollover button scores 100 points when lit. A "moving gate" scores 50 points when lit. Included among the action equipment are two bottom lanes which score an additional 50 points when lit. There are two jet bumpers and five rollover buttons, which score 10 points when lit. "San Francisco" has two flippers at the bottom of the play field for more thrilling action shooting, two slingshot kickers, and other Williams scoring and playing features.

The stunning Williams pinball cabinet is attractively equipped with high-gloss stainless siderails and legs. It has a "Plastikote" finish playfield for far longer durability, twin coin chutes, and a slug rejector.

"San Francisco" is also equipped with the new Williams trouble-free drum units for faster scoring recording on the backglass, the "Latch-Locked" playfield, and a larger locked cash box.

Stern was fairly eloquent in hailing the mechanical excellence in all Williams Electronic Mfg.'s amusement games being shipped all over the world. He stated that this is what makes an amusement equipment manufacturer an important supplier to the coin machine operators in all of the world markets.

Mittel advised that the Williams factory is now in heavy production in "San Francisco" (2-player); "Palooka" (single-player) and "Grand Slam" (baseball game), and that shipping is on a normal—good basis.



BILL THOMPSON

zer, Bally, Smoke-Shop, Fischer and Chicago Coin.

Up until now, Redd has been without a one-stop at the Watertown spot. Redd had a one stop previously at their Brighton, Mass. location but has not been able to offer operator such a service until now.

# Kaye Says Bumper's Bigger Than Ever!

BROOKLYN, N.Y.—Bumper pool has rejuvenated itself in many markets of the nation, according to Howard Kaye, Sales Director of the Irving Kaye Company, manufacturers of 6-pocket coin-operated and non-coin operated pool tables. Recently released is the new Kaye "Klub Pool," a bumper pool table with new style construction and design. The table, which is available in regular 56 x 40 size, also comes in a jumbo 75 x 43 model.

According to Kaye, one of the main reasons for the renewed interest in bumper pool is that the game has always been "a crowd pleaser" to begin with. "The 'Klub Pool' game has features unlike anything seen on the bumper game of several years back and this is another reason for the sales success we've been having," continued the manufacturing exec. "Our rails are four and one-half inches wide, the leg levelers are heavy-duty and the color schemes are fantastic," said Kaye. The games come in two color styles—cardinal red and white, and iridescent blue and white. "You ought to see the red and white table," said Kaye, "the locations go wild for it!"

Irving Kaye, who attended the Billiard and Bowling Convention in Denver, Colorado, last week, advised that the firm is shipping the "Ambassador" non-coin models and the "Deluxe Eldorado" coin-operated models, both lines of which are on a peak production schedule.

## "Complacent" Ops Say They Pay More Than \$75 Dues

NEW YORK—A Cash Box editorial which appeared in the May 16th issue entitled "The Complacent Operator" stated that membership dues in various associations "average around \$75 per year—some run higher with added benefits, others are not as high." The attempt to pinpoint an "average" dues figure using the \$75 fee has brought about telephone calls from operators to their associations. Many membership dues to associations amount to much more than \$75 per month.

These operators, in most instances, pay a per-machine dues fee and many large operators pay dues totaling \$175 and \$200 per month to associations such as the California Music Merchants Association.

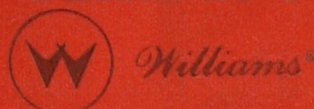
In many cities, association dues are scaled higher because of the high cost of combatting legislation through well-equipped offices with staffs of four and five paid employees.

CMMA members in the Oakland area, for instance, pay 75¢ per machine per month. While many members are charged \$20 to \$25 per month, based on this rate, the larger operator-members are charged upwards of \$150 monthly. CMMA operates on a statewide basis with meetings held regularly in eight local areas. Actually, national operating companies pay associations of the size of an NAMA, annual dues in the neighborhood of \$10,000.

## Runyon To Hold 2nd 'Tropicana' Class

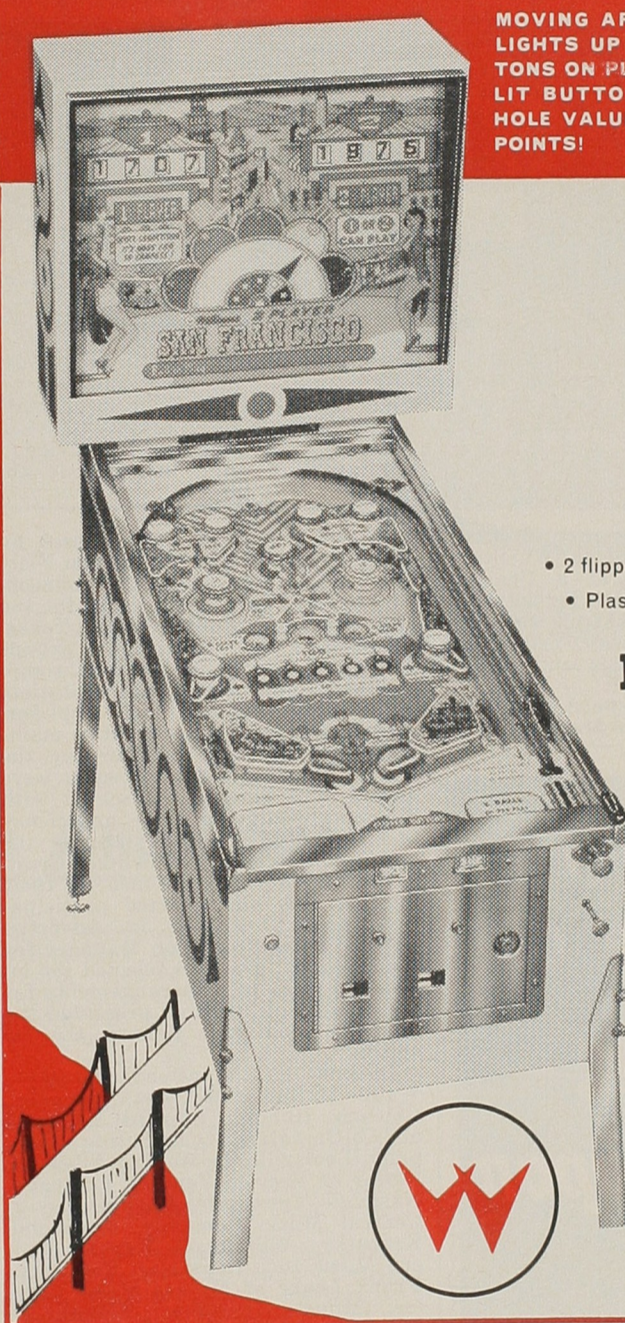
NEW YORK—Louie Wolberg, sales representative at the Runyon Sales Company, announced last week that his coin firm will host their second of three planned service classes on the Rowe 'Tropicana' phonograph, on Monday evening, May 25th. The program is designed to familiarize metro New York ops and mechanics with every facet of the machine.

DESIGNED FOR BIG PROFITS and STEADY PLAY...

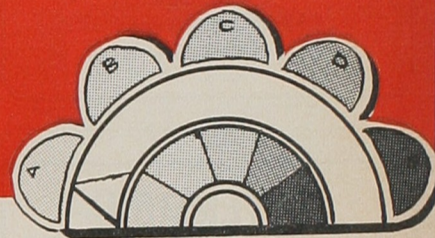


# SAN FRANCISCO

2-PLAYER GAME with ADJUSTABLE 3 or 5 BALL PLAY



MOVING ARROW IN BACK GLASS LIGHTS UP CORRESPONDING BUTTONS ON PLAYFIELD... AND, EVERY LIT BUTTON INCREASES CENTER HOLE VALUE AN ADDITIONAL 100 POINTS!

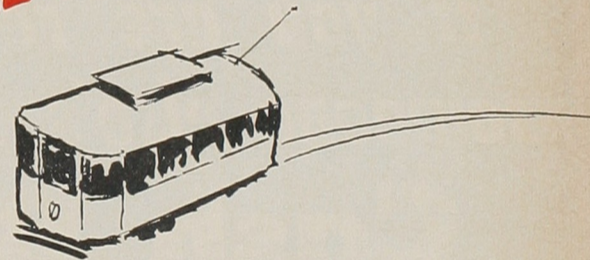


- Replays for high score and number match
- 6 bumpers and 2 targets move arrow
- 2 eject holes move arrow
- Top roll-over button scores 100 points when lit
- Swinging gate scores 50 points when lit
- 2 bottom lanes score 50 points when lit
- 2 jet bumpers and 5-roll-over buttons score 10 points when lit
- 2 flippers
- 2 Sling Shot Kickers
- Plastikote finish playfield
- Slug rejector
- Twin Chutes (optional)

## IMPORTANT WILLIAMS FEATURES

**NEW**

- Trouble free drum units
- Coin switch
- Latch-locked playfield
- Motor unit
- Larger, locked cash box



Williams® ELECTRONIC MANUFACTURING COR  
4242 W. FILLMORE ST. • CHICAGO 24, ILLINOIS  
Cable Address: WILCOIN, CHICAGO . . . NEVADA 2-4900

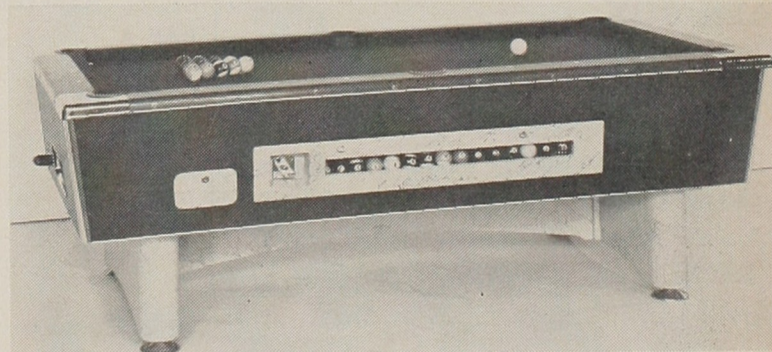
BUY THE BEST—BUY WILLIAMS

## U.S. Billiards Expands Eastern Distribution

AMITYVILLE, NEW YORK—U.S. Billiards has gained distribution of its recently introduced "Professional Series" pool table line in the eastern half of the United States and will continue to further its distribution as production permits. This was the word last week from President Albert Simon following discussions with Sales Manager Art Daddis who is responsible for the distributor arrangement in the east. Daddis has been on the road for more than one month.

The 6-pocket series called "Pro 1" (78 x 46); "Pro 2" (88 x 51); "Pro 3" (93 x 53), and "Pro 4" (103 x 58) was originally introduced in March of this year. The tables replace the original "Comet" series released last year. The U.S. Billiards "Deluxe Rotation Bumper" models "48" and "67" will be continued in production however.

The "Pro Series" features a cue-ball lock-in with the 15th ball locking



the cue ball in place until another coin is dropped. The table also offers a pre-assembled base instead of the wedge construction. "We have gotten away from the wedge-type leg," stated Simon in an interview from his plant offices here last week, "because that style doesn't seem as satisfactory as our pre-assembled construction."

Reception, according to the veteran coin machine manufacturer and distributor, has been good enough to keep production schedules at a peak. "We will gradually expand distribution into the western states but not before we can fulfill deliveries to the satisfaction of our distributors," concluded Simon.

## FIELD SERVICE REPRESENTATIVE

Leading coin machine manufacturer requires experienced Field Service men to cover each of the following areas: Eastern, Southern, Southwestern, Western and Central United States. This will be a challenging opportunity for a qualified individual in each territory. Representatives must have a thorough knowledge of all types and makes of coin operated machines. Send resume to

**Box #703**

CASH BOX  
1780 BROADWAY  
NEW YORK 19, N.Y.

## ATTENTION OHIO AND KENTUCKY

MEET YOUR NEW  
AREA DISTRIBUTOR

A&M ENTERPRISES  
2110 GILBERT AVE.  
CINCINNATI 6, OHIO

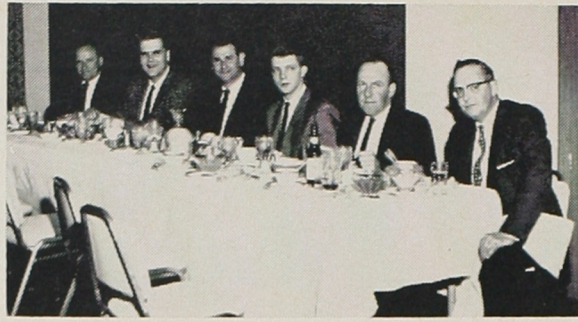
CONTACT HIM FOR KITS TO  
CONVERT YOUR OLD SEEBURG  
200 DUAL CREDIT WALLBOXES  
INTO ALBUM PLAYING BOXES

OTHER AREA DISTRIBUTORS  
WILL BE ANNOUNCED LATER

COIN MACHINE  
IMPROVEMENT &  
MFG. CO.

3018 W. DAVIS DALLAS, TEXAS 75211  
Tel: FE 7-1979

# 30 Attend 5-Day Wurlitzer Class



From left to right, servicemen who were Wurlitzer guests at the banquet following the service seminar at Chicago: Roy Wright, Cliff Mueller, Leo Zaitler, Bob Warner, Art Weidner, and Howard Pistor.



At another side of the table, this group is obviously enjoying the menu. Shown here are: David Combs, Charles Colyer, Kenneth Irish, Frank Leake, Eddie Maher, Al Vetter, and John Stasi.



Bill Van Koughnet of Union Coin Machine Service Company, Detroit, receives his training course certificate from C. B. Ross. Others in the picture, left to right, are A. D. Palmer Jr. standing, H. W. Peteet seated left, and Karel Johnson.



More of the men who completed the Wurlitzer Service Seminar and received their certificates at the closing banquet. Left to right, starting at the end of the table: A. D. Palmer Jr., George Feathers, Al Moermond, George Moran, Howard Moore, Russell Kanode, and Gerald Gibbs.

CHICAGO—A five-day comprehensive service training course on Wurlitzer equipment was held at a Chicago Loop hotel from May 4th through the 8th. Thirty servicemen from such diverse states as Kentucky, Tennessee, Ohio, Wisconsin, Illinois and Michigan were in attendance.

The school was planned by C. B. Ross, Wurlitzer Service Manager, who

was assisted in training classes by H. W. Peteet, Wurlitzer Eastern Field Service Engineer, and Karel Johnson, who is Field Service Engineer for the company working out of Dallas, Texas.

The men were divided into groups of ten and each group rotated through instruction on mechanical operation, circuitry, electronics and amplifier, coin mechanism, and preventive maintenance of all units. On Thursday, the closing evening, the servicemen were hosted at a banquet, presented with diplomas certifying their proficiency and awarded tie clasps bearing the one-hundred-year-old Wurlitzer Crest.

On hand to thank the men for their interest and wholehearted participation was A. D. Palmer, Jr., Advertising and Sales Promotion Manager for the company, who had selected the locale and made prior arrangements for the seminar. C. B. Ross presented the diplomas and Mr. Palmer the tie clasps.

Included in the attendance were: Walter McRae of McGowan Company, Chicago, Illinois; Edward Wheatley of Co-Operative Distributing Company, Louisville, Kentucky; Albert R. Vetter of Service Vending Company, Nashville, Tennessee; Earl Beazley of Central Music Company, Richmond, Kentucky; William G. Ray of Modern Music Inc., Lancaster, Kentucky; Frank Leake of Muncie Music Service, Muncie, Indiana; Arthur M. Weidner of Mel's Coin Machine Company, Green Bay, Wisconsin; Howard

Pistor, Alfred P. Moermond and Russell L. Kanode, all of Royal Distributing, Inc., Columbus, Ohio; William H. Van Koughnet of Union Coin Machine Service Company, Detroit, Michigan; Kenneth Irish of Shank Brothers Music Company, Kalamazoo, Michigan; David M. Combs of Combs Music Company, Vicco, Kentucky; Charles Colyer of Central Music Company, Richmond, Kentucky; Frank J. Kirk of Advance Music, Chicago, Illinois; Clifford Mueller of First Music Company, Inc., Chicago, Illinois; Amber Moody of Co-Operative Distributing Company, Louisville, Kentucky; Robert Warner of Ace Automatic Music Company, Saginaw, Michigan; Edward L. Maher of Maher's Coin Machines, Piqua, Ohio; Howard J. Moore of Hopkins Music, Galion, Ohio; John Stasi of Melody Music, Chicago, Illinois; Gerald M. Gibbs of Northern Music Company, Oscoda, Michigan; Leo Zaitler of A. C. Amusement, Lincolnwood, Illinois; George Moran of Ace Vending, Columbus, Ohio; Royce L. Wright of A. B. Long Music Company, Paducah, Kentucky; George Feather of Barentsen Candy Company, Benton Harbor, Michigan; Harold Freeman of F & M Phonograph Service, Chicago, Illinois; and Donald J. Smith of Ray Jenner and Company Waupaca, Wisconsin.

So enthusiastic were the trainees that a similar course of instruction covering a period of fully five days is slated for the latter part of June.

*If you are reading  
someone else's copy of*  
**Cash Box**  
*why not mail this coupon  
today!*

CASH BOX  
1780 BROADWAY  
NEW YORK 19, N. Y.

Enclosed find my check.

- \$15 for a full year (52 weeks) subscription  
 \$30 for a full year (Airmail in United States)  
 \$30 for a full year (outside United States)  
 \$45 for a full year (Airmail outside U.S.)

NAME .....

FIRM .....

ADDRESS .....

CITY ..... ZONE ..... STATE .....

Be Sure To Check Business Classification Above!

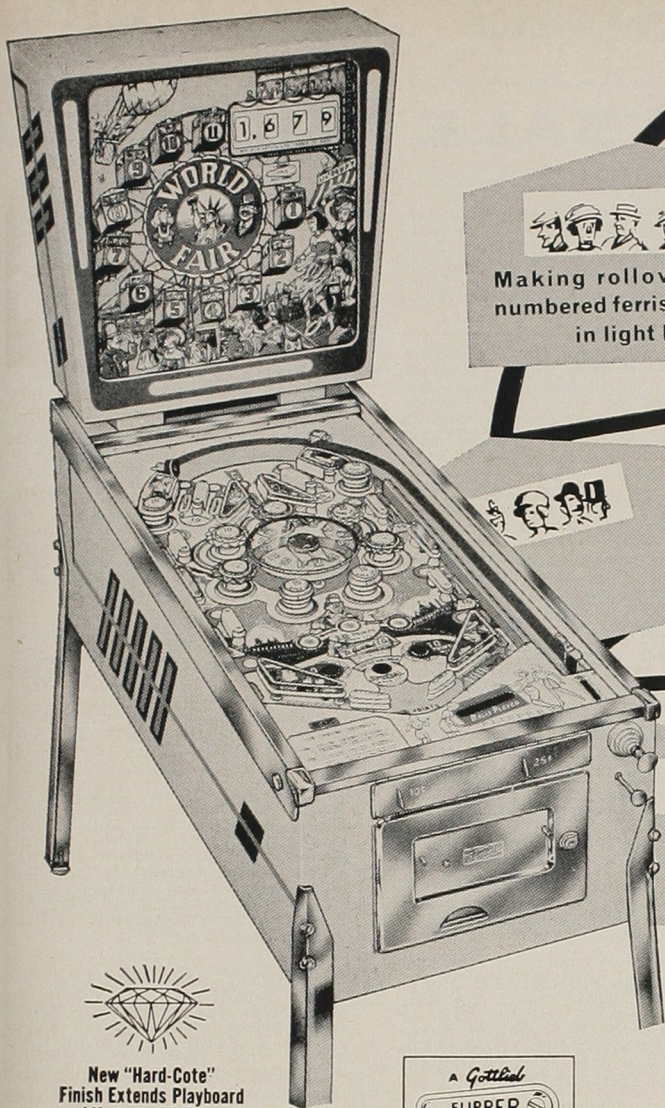
(Check One)

- I AM A  
DEALER .....  
ONE STOP .....  
DISTRIB .....  
RACK JOBBER .....  
COIN FIRM .....  
OTHER .....

## Rowe AC Tells 'Em How To Make Change



Ellis Royal (left) and Bill Dorn, field sales engineers for Rowe AC Manufacturing, conduct service school for Bill Changers in Atlanta, Ga., as part of company's continuing program of service schools for vending machine distributors and operators. Some 37 service people representing 19 different customer companies attended the Atlanta sessions.



New "Spin-Disc" Feature spots any one of 11 numbered cars.

Making rollovers lights numbered ferris wheel cars in light box.

Lighted red bumpers and out hole activate "Spin-Disc."

Lighting all cars awards special and relights one rollover for additional special scoring.

Playboard Auto-Clamp. Stainless cabinet trim. Match feature.

Thrill to Fun at the Fair! Player Appeal! More Profit!

Just in time for the New York World's Fair!

**D. Gottlieb & Co.**

1140-50 N. Kostner Avenue • Chicago, Illinois 60651

*That Extra Touch of Quality*

New "Hard-Cote" Finish Extends Playboard Life to an All-Time High!



## California Clippings

The expected arrival on the scene of several new games from the factories anticipated by distributors and wholesalers this week. In the meantime, business continues to hold up extremely well with sales of used equipment at an all-time high. . . . At Advance Automatic Sales Co., Bob Portale said that Williams new add-a-ball game, Palooka has received a tremendous reception from the local operators. Also going well, said Bob, is the Grand Slam baseball game. Advance swamped with orders for the Irving Kaye pool tables, and also Chicago Coin Cadillac Bowlers.

The new parts department running a special sale through the end of this month. . . . The new Rowe SK-9 single brewer coffee brewer on display at the R. F. Jones Co. Chuck Klein said the competitively priced vendor is getting very good response from the operators. Mr. Hans Von Reydt, factory regional representative for Rowe, visiting customers with Ed Wilkes. Billy Gray returned from a trip up the coast, and Don Edwards, this week, covering the San Diego territory.

Richard Harris, a new employee at the Jones Co., working in the repair shop. Ed Wilkes and Bill Gray looking forward to meeting many of their friends in the business at the NAMA western division regional meeting to be held at the Mark Thomas Hotel in Monterey, Calif. on June 5 and 6. Representatives from the vending industry will be attending from California, Nevada, Arizona, Utah, and Wyoming.

Chuck Klein's daughter, Joyce was gifted with a sewing machine by the employees at Jones on the occasion of her marriage to Bud Laymon. . . . At Paul A. Laymon, Inc., Charlie Daniels said that pool table sales have been exceptionally good with the tables going faster than they can get them.

Hank Tronick at C. A. Robinson Co. received another shipment of United's Bank Pool in response to increasing popularity of the game and the receipt of new and repeat orders. A mixture of activity reflecting sales in pool tables, Bowlers, Baseball Games, and used equipment is keeping volume up on an even keel. Another game enjoying popularity this spring is Midway's Top Hit baseball game. Hank now anxiously awaiting the new game due shortly from Midway. . . . Marian Jepson, wife of Ray Jepson of Palomar Vending flying in the Women's International Derby.

Chuck Meyers, Decca Records local promotion rep brought Bobby Gordon by Leuenhagens Record Bar to check on sales on his recording of "Malta." . . . Leo Simone at Amco Music and Vending Co., reported that Moe Barrett has successfully used the Seeburg mobile van to upgrade 15 of his locations with the Seeburg LP Console. Leo said Amco's move back to their Pico Blvd. location has stimulated business considerably. John Montgomery of the vending sales department on a trip up north, and George Smith covering the San Diego area this week. . . . At Duarte International Sales Co., Joe Duarte reported shipments leaving for Manila and Tokyo this week. Visiting at Duarte this week were Angel Rosas and Rudolfo Romo from Mexico.

A large shipment of phonographs and games in preparation for shipment to Europe at Simon Distributing Co. The Rock Ola Grand Prix on display in the new phonograph display room. . . . Ronnie Ricklin, son of Sammy Ricklin of California Music Co., was married last Sunday to JoAnne Thomas with a reception held at the Beverly Hilton Hotel. Buddy Cagle is seeing Buddy Robinson at California checking on the sales of his new Capitol Records hit, "The Gold Cup."

DAVIS DAVIS DAVIS DAVIS DAVIS DAVIS DAVIS DAVIS DAVIS

# DEPENDABLE Coin-Operated Equipment FROM DAVIS

You can depend on Davis Distributing Corp. for reconditioned and used coin-operated music machines. Our guarantee is synonymous with top quality the world over. With Davis you can be assured of expert workmanship and technical know-how. The following location-ready phonographs have been steam cleaned, reconditioned and refinished to look and operate like new:

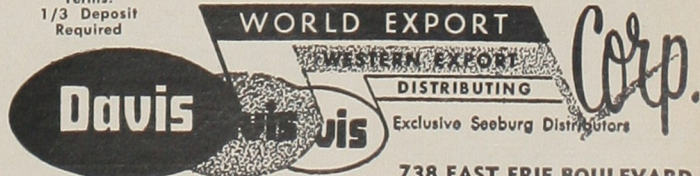
PHONOGRAPHS	
Seeburg AY 160 SHR	\$925.00
Seeburg AQ 160S	695.00
Seeburg Q 160	650.00
Seeburg KD 200	350.00
Seeburg HF 100R	350.00
Seeburg VL200	275.00
Seeburg V200L	250.00
Seeburg V200	195.00
Seeburg HF 100G	275.00
Seeburg W 100	250.00
Seeburg D-3WA (200 Sel. W.B.)	49.00
Seeburg 3W1 (100 Sel. W.B.)	25.00
CIGARETTE VENDORS	
Seeburg E-2 Reconditioned	\$225.00
Seeburg E-1 Reconditioned	125.00

**IN EUROPE**  
Holland-Belge-Europe  
276 Ave. Louise  
Brussels, Belgium

**IN PUERTO RICO**  
Cancel Hermanos Inc.  
1816 Loiza St.  
Santurce, Puerto Rico

Write or visit our representative for guaranteed quality used equipment

Terms:  
1/3 Deposit  
Required



**WORLD EXPORT**  
**WESTERN EXPORT**  
**DISTRIBUTING**  
Exclusive Seeburg Distributors  
738 EAST ERIE BOULEVARD  
SYRACUSE, NEW YORK 13210  
PHONE GRanite 5-1631  
AREA CODE 315

DAVIS DAVIS DAVIS DAVIS DAVIS DAVIS DAVIS DAVIS DAVIS

# CLASSIFIED ADVERTISING SECTION

## CLASSIFIED AD RATE 20 CENTS PER WORD

Count every word including all words in firm name. Numbers in address count as one word. Minimum ad accepted \$5.00. CASH OR CHECK MUST ACCOMPANY ALL ORDERS FOR CLASSIFIED ADVERTISING. If cash or check is not enclosed with order your classified ad will be held for following issue pending receipt of your check or cash.

NOTICE—\$67 Classified Advertisers. (Outside USA add \$52 to your present subscription price). You are entitled to a classified ad of 40 words in each week's issue for a period of One Full Year, 52 consecutive weeks. You are allowed to change your Classified Ad each week if you so desire. All words over 40 will be billed at the rate of 20c per word. Please count words carefully. Be sure your Classified Ad is sent to reach New York publication office by Wednesday, 12 Noon, of preceding week to appear in the following week's issue.

## Classified Ads Close WEDNESDAY

Send all copy to: CASH BOX, 1780 Broadway, New York 19, N.Y.

## WANT

USED 45 RPM RECORDS. WE PAY freight & top prices. KING SALES—1415 WASHINGTON STREET—BOSTON, MASS.

MECHANIC AND BE USEFUL FOR TRAVELING ARCADE. NO BOOZE. NO CAR NEEDED. JOIN VICINITY DETROIT. PAY YOUR OWN TO JOIN. BOX 705—CASH BOX—1780 BROADWAY, NEW YORK, N.Y.

USED 45 RPM RECORDS. ALL TYPES AS they run, right off the route. No sorting or picking. We pay freight from anywhere in USA. Standing order available for regular shippers. JALEN AMUSEMENT CO. INC.—1215 S. HOWARD STREET—BALTIMORE, MD. 21230.

SURPLUS 45 RPM RECORDS. WE BUY large quantities, on a very steady basis. We are the nation's foremost packager of promotional priced and packaged phonograph record packs. Bank references furnished. We are rated in D & B. NATIONAL BAG-O-TUNES, INC., 15 ALABAMA AVENUE, ISLAND PARK, L.I., N.Y. (Tel. 516-TU 9-9300).

SEEBURG M100c, HF100R, VL200, 222S, AY160S, DS160S, Wurl: 1900, 2000, 2100, 2150, 2200, 2250, 2300S, 2400S, 2500S, 2600S, 2700S, Rockola 1448, 1454, 1455, AMI H200E, J200ES, Gans, Bowlers, Bingos. Rush offers to VICTOR HUGO—KONINGIN ASTRID-LAAN—49 MECHELEN, BELGIUM.

JUKE BOX OPERATORS. FOR A STEADY year round outlet for your used records. Manufacturers'. For your overruns and surplus LP's & 45s. Call or write. EASTERN RECORD SALES & DIST., INC., 751 10th AVE., N.Y. 19, N.Y. (Tel. CI 5-9469).

PANORAMS AND PANORAM PARTS. United Triple Plays Wanted. ADVANCE AUTOMATIC SALES CO., 1350 HOWARD ST., SAN FRANCISCO, CALIF. (Tel. HElock 1-1750).

WE PAY THE HIGHEST PRICES FOR ALL Bally Bingos and Gottlieb Pinballs manufactured 1958 and up. Interested all brand new closeouts. Also arcade equipment. Cable or write to: HOLLAND-BELGIE, EUROPE SPRI., 276 AVENUE LOUISE, BRUSSELS & BELGIUM. (Cable address. HOBEL-EUROPE-BRUSSELS).

MUSIC, GAMES, VENDING. CALL ATLAS DISTRIBUTORS 1024 COMMONWEALTH AVE., BOSTON 15, MASS. (Tel. RE 4-1384).

LATE BINGOS MISS AMERICA/UP. GOTTlieb 2-4 Players. Bowlorama Late Bally Bowlers. Unshopped, complete, working, packed original cartons. Pay cash in dollars. Prices FOB nearest seaport. MAX LOBO & CO., MEIR 23, ANTWERP, BELGIUM. Cable: LOBOMA. (Tel. 33.81.33).

USED MILLS OR JENNINGS SLOT MACHINES. GENERAL AMUSE CO., GRENS-BEEKLAAN 2, BERCHEM, BELGIUM.

JUKE BOX AND BOWLER MECHANIC. United Bowlers and Rock-Ola Juke Boxes. Call or write. H & H MUSIC CO., 1626 3rd AVENUE, MOLINE, ILLINOIS. (Tel. 767-6703).

RECORDS, 45's AND LP'S, SURPLUS, RETURNS, overstock, cut-outs, etc. HARRY WARRINER, KNICKERBOCKER MUSIC CO.—453 McLEAN AVE., YONKERS, N.Y. (Tel. Greenleaf 6-7778).

ATTENTION: DISTRIBUTORS AND RECORD SHOPS. There's Gold on your shelf. Want 45 rpm records up to 10 years old. Highest prices paid anywhere. Up to 43¢ each—our choice. BIG JOHN RECORDS, 687 WASHINGTON ST., BOSTON, MASS. (Tel. 338-7426).

WE PAY CASH AS ALWAYS FOR: SEEBURG; Wurlitzer; AMI and Rock-Ola music. Gottlieb Pins; Arcade equipment; Bally Bingos; Write or cable: PALMER AT BELIN-TRACO—31 SOMERSTRAAT—ANTWERP 1, BELGIUM.

FOR RESALE: SEEBURG AND WURLITZER Phonographs, Games. Send inventory and lowest cash prices. HASTINGS DIST. CO., INC.—6100 WEST BLUEMOUND ROAD—MILWAUKEE 13, WISC.

ANY AGE USED 45 RPM RECORDS. TELL us what you have. We pay all freight from anywhere. We pay highest prices. Try us and profit. Don't wait! Write us today! MUSIC SERVICE CO., 424 E. Broad St., Richmond 19, Va.

JUKE BOX OPERATORS FOR A STEADY year round outlet for your used records. We pay freight. Top prices, manufacturers no quantity too large. LP's or 45's. Call or write. BULLDOG DIST., INC.—33 SPRING ST.—LYNN, MASS. (Tel. 593-3920).

45 RPM RECORDS, NEW OR USED. NO quantity too large or small. Highest prices paid. Write stating quantity on hand. TONY GALGANO DIST. CO., 4135 W. ARMISTAGE, CHICAGO 39, ILL. (Tel. Dickens 2-7060).

YOUR USED OR SURPLUS 45 RPM RECORDS, also new surplus LP's. We buy all year 'round and pay top prices. No lot too large or too small. We pay freight. BEACON RECORD DIST., INC., 725 BRANCH AVE., PROVIDENCE, R.I. (Tel. UNION 1-7500. JACKSON 1-5121).

KEENEY DELUXE RED ARROWS; BLACK Dragons; Buckley Track Odds; Sun Chiefs; Standard Chiefs; Mills Four Bells and similar type machines. SASKATCHEWAN COIN MACHINE CO.—1025-104th STREET—NORTH BATTLEFORD, SASK., CANADA.

FIRST CLASS SERVICE REPAIR MAN EXPERIENCED in repairing and rebuilding phonographs, vendors, and amusement games. DAN CONNY—1026 BUFFALO AVE., NIAGARA FALLS, N.Y. (Tel. 285-0582).

NEW 45 RPM RECORDS. NO QUANTITY too large or small. We pay the highest price, plus all freight. Also over-run return hit records. Contact immediately for quick transaction. We pay cash. SUTTON RECORD CO.—26 WEST 20th ST.—NEW YORK, N.Y. (Tel. CH 2-3250).

NEEDS PIN GAMES. SUNSET 3 IN LINE; COW-BOY; FLIPPER FAIR; ETC. BINGOS 30 Miss America; Roller Derby; Circus Queen etc; Arcade equipment: Juke-Box; Rock-Ola; Seeburg; Wurl: 1962/1963; EXPORT-EXPORT MARCEL GROSCHE—3 BLD. AVROY—LIEGE, BELGIUM.

## FOR SALE

SHOPPED, CLEAN AND READY FOR LOCATION: AMI 1-200 \$650; Cont. 11-100 \$595; Lyric \$425; K-100 \$475; J-200 \$435; J-200 Manuals \$325; AMI W 80 WB \$20; WQ 200 WB \$49.50. BIRD MUSIC DIST., INC.—124-126 POYNTZ AVE.—MANHATTAN, KANSAS.

POKERINO, REFINISHED, RECONDITION, new backglass with drop chute, knock off, with or without match feature. Match feature in kit form for your present games. Also new backglass, points, decals. JAMES TRAVIS—P.O. BOX 206—MILLVILLE, N.J.

FOR SALE—OR TRADE—C.C. BULLS EYE DROP Ball \$50; United Handicap Shuffle Alley \$75; Bally Club Bowler \$150; Bally Deluxe Club Bowler \$175; Bally ABC Shuffle Alley \$75; United Regulation Shuffle Alley \$75; United Niagara Shuffle Alley \$150; Bally Bank Ball \$150; Fischer 6 Pocket Pool Table \$195; Exhibit 6 Pocket Pool Table \$175; 20 Col. Corsair \$110; 30 Col. Corsair \$115; Rowe 2-700, electric \$105; 22 Col. National Model 222. Make offer: Seeburg M100B \$110; Seeburg M100C \$125; U-Select-It RDS and APD Candy Machines \$85; 4 Col. Superior Gum Vendors \$25; Dan CONNY—1026 BUFFALO AVE.—NIAGARA FALLS, N.Y. (Tel. 285-0582).

SIX VACUUMATIC CARD MACHINES \$150.00 ea.; 1 All-Tech Chuck Wagon, new, \$475.00; 1 Keeney Popcorn \$275.00; MIKE MUNVES CORP., 577 TENTH AVENUE, NEW YORK 36, N.Y. (BRyant 9-6677).

WE HAVE A CHOICE SELECTION OF late Williams Two Players. Write for prices. MID-WEST DIST., 709 LINWOOD BLVD.—KANSAS CITY, MO.

NEW KIDDIE RIDES SOUTHLAND TRAVELING Pony; X17 Space Ship; Traveling Dinosaur; Top locations available. Write or phone. WESTERN RAILS AMUSE. CO.—132 SHAKER ROAD—EAST LONGMEADOW, MASS. (Also 3249 N. BROADWAY, CHICAGO, ILL. (Tel. DI8-2900).

100,000 NEW 45 RPM 6 MONTHS TO 1 year old. \$10 per 100, \$95 per 1000. Also 25,000 EP's \$25 per C; \$200 per M; 12' LP's available \$100 per C; \$950 per M. RAY-MAR SALES CO., 170-21 JAMAICA AVE., JAMAICA 32, N.Y. (Tel. OLYmpia 8-4012).

BALLY CHALLENGERS 14FT; UNITED; Bonus; & Handicap-16ft. Make us an offer. TOLEDO COIN MACHINE, TOLEDO, OHIO. (Tel. CH 3-7191).

BALLY SHUFFLES: ABC SUPER, Deluxe, Congress, Whiz and Speed United Shuffles; Eagles and Atlas. GLOBE DIST. CO., INC., 2330 N. WESTERN AVENUE, CHICAGO 47, ILL.

50 RECORDED SONGS ONLY \$3.00. MANY great songs by favorite artist, our choice. New records, guaranteed. State style of music preferred—Pop, R & B or Country. Offer good only U.S.A. No C.O.D.'s. RHYTHM RECORDS—BOX A—ARCADIA, CALIF.

HAVE YOUR "SQUOITS FUN WITH Water" games factory reconditioned. Includes new scoring arrangement, improved pump, repair, refinish cabinet, replace worn mechanical parts. New machines made to order. Write — AQUATIC PRODUCTS CORP.—8038 ALVERSTONE AVE.—LOS ANGELES, CALIF. (Tel. 645-1980).

AMI H 120 \$245; J 120 \$345; K 120 \$445; CONTINENTAL 2-200 \$595; SEEBURG V 200's \$150 or five for \$695; Q's \$595 to \$695; HV 200 Hideaways \$95 or three for \$250; Wurl: 1900's \$225 or three for \$600; Bally Fun Phones like new \$95; Spinner \$50; Table Hockey's \$95; Pro Golfer \$395; Also used vending equipment direct overseas shipment from Port of Detroit. MARTIN AND SNYDER CO.—13200 W. WARREN AVE. DEARBORN, MICH. (Tel. LUzon 2-2300)

1460 ROCK-OLA HIDEAWAY LIKE NEW \$445; Rock-Ola Model 1555 Wall Boxes \$55; Model 1546 Wall Boxes \$35; three for \$100; WESTERN DIST., 1226 SW. 16th AVE., PORTLAND 5, OREGON. (Tel. CApitol 8-7565).

ARCADE OWNERS. CLEARING WAREHOUSE. Write for Bargain Deals. We have an assortment of small and large Ball Bowlers, Guns and Assorted Arcade pieces. Make offer MILLER-NEWMARK DIST. CO., 3767 EAST 28th ST., GRAND RAPIDS 8, MICH. (Tel. 949-2030 or 9492031).

WE HAVE A LIMITED NUMBER OF Keeney Venus bingos for sale at various attractive close out prices. Brand new. If any one is interested contact GENERAL SALES CO., LTD.—IRELAND ISLAND, BERMUDEA.

WE INVITE DISTRIBUTOR INQUIRIES ON BILLIARD ACCESSORIES AND COIN MACHINE PARTS.—DYNABALL CO.—8039 LAWNDALE AVE.—SKOKIE, ILL. (Tel. 677-0773) (Chicago. Tel. LI 9-5100) Cable address: DYNABALL.

REGISTERED FOR EXPORT: 15 KEENEY's Red Arrows \$150; 1 Gott: Liberty Bell \$450; Gott: Oklahomas \$350; Assortment of Bally Bingo machines. Write D & P MUSIC—27 EAST PHILADELPHIA STREET—YORK—PA. (Tel. 81846).

EXPORT. KEY WEST; SHOW TIME; BEACH TIME; HOLLY CRANES; BALLERINA, ETC.: Bally Wild Lemon, F.P. Double Up; Triple Bell Drawl Bell; Keeney; Red Arrow; Flashback; Sweet Shawnee; Black Dragon; Buckley Track Odds; Rock-Ola & AMI Phonos. CROSSE—DUNHAM & CO.—225 WRIGHT BLVD.—NEW ORLEANS, LA. (Tel. 367-4365)

HI-SPEED SUPER FAST SHUFFLE BOARD Wax. 24 one-pound cans per case, \$8.50 f.o.b. Dallas, Texas. Sold on money back guarantee. Distributor for D. Gottlieb, ChiCoin. STATE MUSIC DISTRIBUTORS INC., 3100 MAIN ST., DALLAS, TEXAS.

6 ROWE AMI JAL \$775; 3 ROCK-OLA 1475 \$375; 8 AMI E-80 and 120 \$85; 1 Seeburg VL-200 \$150; 3 Wurl: 1800 \$115; 3 WMS Short Stop Baseball \$135; 1 Bally Heavy Hitter \$150; WALLACE DIST. CO., INC.—P.O. BOX 75—MINERAL WELLS, TEXAS. (Tel. FA 5-3600 Area Code 817)

UNITED JUMBO OR ROYAL 16' BOWLER \$75; Bonus 16' \$125; Duplex 16' \$175; Advance 16' \$200; ABC Tournament \$75. All are as is, not shopped. Have Gun five balls, drink machines and cigarette vendors. Write or call. CENTRAL DIST. INC.—2315 OLIVER ST.—ST. LOUIS 8, MO. (Tel. MAL 3511).

SHUFFLE ALLEYS: UNITED SUPER Bonus \$95; Keeney Deluxe Challenge \$95; United Top Notch \$129; Ball Bowlers: Twin Bowler \$275; T.V. Bowler \$150; Classic Bowler \$150; Strike Bowler \$95; All of the above mentioned machines have been completely shopped and refinished. TRI-STATE DIST. CO.—CALLIER SPRING ROAD—P.O. BOX 615—ROME, GA. (Tel. 234-7123. Area code 404).

ATTENTION! WE ARE THE TRADE'S largest suppliers of Pool Table supplies—slates, cues, balls, cloth, etc. Best quality, lowest prices, write or phone for our new catalog. EASTERN NOVELTY DISTRIBUTORS, 3726 TONNELE AVE., NORTH BERGEN, N.J. (Tel. UNION 3-8627).

SOUTHLAND ENGINEERING'S NEW Improved model "Time Trials" in original cartons \$450. IMPERIAL COIN MACHINE EXCHANGE INC.—498 ANDERSON AVENUE, CLIFFSIDE PARK, N.J.

EXPORT ONLY. RED ARROWS \$125 ea.; Trail Blazers \$135 ea.; Jamboree \$135; Old Plantation & El Ranchos; Barrel O Funs & Lotta Funs. Write. D & L COIN MACHINE CO.—BOX L713—HARRISBURG, PA. (Tel. 717-324-1051) Cable DALCOIN.

GAMES & MUSIC OF ALL KINDS: BASEBALLS \$100 up; Pin Games \$75 up; 8. Alleys \$50 up; Games \$125 up; Bally Horos \$200 ea.; 6 for \$1000. Also used Vending & Cigarette Machines. Wire, write, or call GABRIELSON & CO.—724 MEMORIAL DRIVE S.E.—ATLANTA 16, GA. (Tel. 525-7441).

WURLITZER HIDEAWAYS: 1—2311 100 Selection \$225; 2—1919 104 Selection \$175; 4—1717 104 Selection \$150; 18—5207 104 Selection wall boxes \$25 each; Completely shopped and painted—ready for location. OPERATORS SALES INC.—4122 WASHINGTON AVENUE—NEW ORLEANS, LA. (Tel. 822-2370).

TIP TOP CONDITION UNITED SILVER \$250. FOB, N.Y. UNITED CIRCUS \$300. while they last. UNITED EAST COAST CORP.—585 TENTH AVENUE—NEW YORK, N.Y.

IF IT'S PANORAM PARTS YOU WANT PHIL GOULD HAS 'EM. ALL TYPES OF FILMS FOR Panoram Peeks. PHIL GOULD—224 MARKET ST.—NEWARK, N.J. (Tel. 201-Market 4-3297)

NEED CAPITAL FOR NEW PATENTED COIN OPERATED POOL TABLE. LOCATION tested, good potential. Consider outright sale or royalty. BOX 704—CASH BOX—1780 BROADWAY—NEW YORK, N.Y. 10019.

GUN SMOKE \$175; BINGO ROLL \$30; BALLY DERBY \$150; ABC BOWLING LANE \$75; Pokerino \$30; Night Fighter \$50; Seeburg R \$300; Seeburg BL \$150; 22' Shuffleboard \$125; KELLY COIN—8447 MT. ELLIOTT—DETROIT, MICH. (Tel. PR 1-4511)

WALLBOXES: SEEB. CONSOLETTES \$210; 200 Sel. Boxes \$40; Wurl: 5250 \$55; 5210 \$30; 5207 \$25; Gott: 2 pl. Atlas \$195; Seeburg AY160's equipped \$825; Slate Bumper Pool \$150; Ten Big Ball Bowlers; United; Writco. GREG BROS. AMUSE. CO. INC., 1258 BROADWAY, ALBANY, N.Y. (Tel. HObart 5-0228).

SPECIALS: COMPLETELY RECONDITIONED: Bally Deluxe Bowler 16' \$645; Cue Tease (2 pl.) \$245; Williams Deluxe Titan Gun \$245; Major League \$395; Ten Spot \$195; Serenade (2 pl.) \$145; Wurl: 1700P \$145; 1800 \$165; 1900 \$195; AMIF80 \$125; Gott: Sweet Sioux (4 pl.) \$195; Texan (4 pl.) \$245; Queen of Diamonds \$145. MICKEY ANDERSON AMUSE CO., 314 EAST 11th ST., ERIE, PA. (Tel. GLendale 2-3207).

# CLASSIFIED ADVERTISING

FOR SALE—(Cont'd)

# MANUFACTURERS NEW EQUIPMENT CURRENTLY IN PRODUCTION

Prices shown are list prices f.o.b. factory. Manufacturers have not authorized prices where no price is shown

**1 SWEDEN 4 FLAVOR SLUSH MACHINE USED 2 MONTHS, LIKE NEW ORIGINAL PRICE \$2195; Will sacrifice \$800; Write-wire-call. SUSIE'S DRIVE IN—264-9358 FAIRVIEW AVENUE. — MONTGOMERY, ALABAMA.**

**WM'S VANGUARD GUN \$185; WM'S SPACE GLIDER GUN \$175; UN. YANKEE BASE \$145; UN. SPACE SLUGGER \$60; Bally De Luxe Jumbo \$145; Bally Official Jumbo \$125; Un League B/A \$145; Un. Flash \$145; Un Cyclone \$125; BETSON ENTERPRISES INC.—3726 Tonnele Avenue—North Bergen, N.J. (Tel. UNION 3-8627—Area code 201)**

**RELAYS—SWITCH ASSEMBLIES. LOW cost, high quality, general purpose open style made to your specifications. Short run our specialty. Also electrical harnesses. MARVEL MFG. CO.—2847 W. FULLERTON AVE. — CHICAGO, ILL. (Tel. DI 2-2424).**

**ALL LATE MODEL CHICAGO COIN, BALLY SHUFFLE ALLEYS. Call UNITED EAST COAST CORP., 585 TENTH AVENUE, NEW YORK, N.Y.**

**WURL: 1800 \$225; WURL: 2150 \$345; Wurl: 2200 \$495; Wurl: 2300 \$595; Wurl: 2400 \$695; Wurl: 2500 \$795; NORTH-WEST SALES CO. OF OREGON.—1040 S.W. 2nd AVE.—PORTLAND 4, OREGON. (Tel. 228-6557).**

**UNITED 16' FALCON B.A. \$425; 16' Jumbo B.A. \$195; Silver Roll-Down \$550; Super Slugger Baseball \$95; Shuffle Baseball (Floor sample) \$595; Chicoin: Six Game Bowler S/A \$325; 6-Pl. Home Run Baseball \$95; WMS. Titan Gun \$325; Midway: Slugger Baseball \$350; Deluxe Shooting Gallery \$225; CENTRAL OHIO COIN-MACHINE EXH. INC. 315 E. 5th AVE.—COLUMBUS 1, OHIO. (Tel. 294-3529).**

**SEEBURG 100 C: WURL: MODEL 1015; GOTT: SWING ALONG; FISCHER BUMP-ER Pool; Cleaned & ready for your location or for resale. Call or write. NASTASI DIST. CO.—839 BARONNE ST. NEW ORLEANS, LA. (Tel. 523-6386) We handle all kinds of coin machines.**

**5,000 NEW 78 RPM RECORDS, POP, ARTISTS, TOP LABELS. MAKE OFFER. NEW BALLY BANK Balls in original crates. Wms. Ten Strike, Bally Beauty Contest. WANT: See: Mod. L100's. NOBRO NOV-ELTY CO.—142 DORE ST.—SAN FRANCISCO, CALIF. (Tel. MA 1-5438)**

**MILLS AND JENNINGS FRUITSLIP MACHINES. BALLY BINGOS. HOLLY CRANES and Flipper Pin Games for export. ALMAN ENTERPRISES—BENDER WAREHOUSE—P.O. BOX 4300—RENO, NEVADA.**

**ATTENTION: WHOLESALERS AND EXPORTERS. Write for our prices on phonographs ready for export shipment. UNITED DIST. INC.—902 WEST SECOND STREET—WICHITA 3, KANSAS.**

**EXPORTERS ALL TYPES EQUIPMENT IMMEDIATE SHIPMENT FOR SALE: NEW BALLY TABLE Hockey—profitable, low cost under \$100; Coffee Machine and the amazing Cinch Shoe Shine Vendor. Samples of shine available on request. REDD DIST. CO. 80 Coolidge HILL ROAD — WATERTOWN, MASS. (Tel. 926-2250)**

**SPECIAL—WILLIAMS: EL TOROS \$360; Official Baseballs \$175; Merry Widows \$525; Gott: Gauchos \$390; Chicago Coin; All Star Baseballs \$340; Fire Crackers \$360; Princess Bowlers \$550; Bally: Monte Carlos \$300; Bally Bowler \$450; Marksman Guns \$195; Sharpshooter Guns \$125; Skill Parade \$50; Misc: Panorams \$195. NEW ORLEANS NOVELTY CO., 1055 DRYADES ST., NEW ORLEANS, LA. (Tel. 529-7321).**

**ALL CHROME WALL BOXES, ACTION CLOSEOUT, IMMEDIATE DELIVERY. SEEBURG L26 3W1, 100 Selection each \$15; 100 V3WA, 200 Selection each \$35; We buy, sell or exchange any make or model of Late Phonographs and wall boxes. Inquiries invited, lowest prices. SEACOAST DIST.—1200 NORTH AVENUE, ELIZABETH 4, N.J. (Tel. BI 8-3524-5).**

## MISCELLANEOUS

**30,000 PROFESSIONAL COMEDY LINES! Largest laugh library in show business. 36 books; over 400,000 copies sold! Used by 1,000 disc jockeys! Orben's Current Comedy our monthly topical gag service features deejay material each issue. Free catalog. Write: ORBEN DEE-JAY LAUGHS, 3536 DANIEL CRESCENT — BALDWIN HARBOR, N.Y.**

### ALL-TECH INDUSTRIES

Gold Crest (3 1/2 x 6' 6 Pkt. Table) ..  
Gold Crest (4 1/2 x 9' 6 Pkt. Table) ..  
Gold Crest (3 1/2 x 7' 6 Pkt. Table) ..  
Gold Crest (4 x 8' 6 Pkt. Table) ..

### AMERICAN SHUFFLEBOARD CORP.

Electra "6" (6' 6-pkt. table) ..  
Electra "7" (7' 6-pkt. table) ..  
Electra "8" (8' 6-pkt. table) ..  
Classic "6" (6' 6-pkt. table) ..  
Classic "7" (7' 6-pkt. table) ..  
Classic "8" (8' 6-pkt. table) ..  
Imperial Shuffleboard (16' to 22') ..  
Imperial Cushion Model (12') ..  
Bank Shot Model (9')

### AUTOMATENBAU FOERSTER

Natl. Sales Agents, L. T. Patterson Dis-  
tributors.  
Football Match ..  
Europa Meister Eishockey ..  
Musikbar 100 ..  
Billiard Tables Miniatur ..

### AUTOMATIC PRODUCTS CO.

CIGARETTE VENDORS  
Smokeshop "Starlite 450"; 18 sel., cap. 450  
Smokeshop "Starlite 630"; 18 sel., cap. 630  
Smokeshop "Starlite 850"; 27 sel., cap. 850

### AUTO-PHOTO CO.

Model 12 Studio .. \$3,245.00  
V-2 Auto-Voice Recorder

### BALLY MFG. CO.

Mad World 2P (5/64) ..  
Bongo 2P Pin (3/64) ..  
Deluxe Bally Bowler 16' lengths  
(Jan. 1964)  
Super 8 Shuffle (4/63)  
Bucky Bronco Kiddie Horse .. \$995.00

### T. H. BERGMAN CO.

Natl. Sales Agents, Duncan Sales Co.  
Arizona Gun (Live action pellets)

### CAMECA

Scopitone-Audio-Visual Machine, 36-Sel., 26  
inch screen. Natl. Sales Agents, Scopit-  
one Inc., USA.

### COAN MFG. CO.

CIGARETTE VENDORS  
Model 74-MD; 74 sel., cap. 74  
Model 74-APC; 74 sel., cap. 74  
Model 94-UM; 94 sel., cap. 94  
Model 94-UC; 94 sel., cap. 94  
Model 116-WM; 116 sel., cap. 116  
Model 116-WC; 116 sel., cap. 116  
CANDY VENDORS  
Model 74-APD; 74 sel., cap. 74  
Model 94-UD; 94 sel., cap. 94  
Model 116-WD; 116 sel., cap. 116  
Model 188-D; 188 sel., cap. 188  
Model 47-Pastry; 47 sel., cap. 47

### CHICAGO COIN MACHINE

Bronco 2P (5/64) ..  
Champion Rifle Range (1/64) ..  
Cadillac Ball Bowler (1/64) ..  
Spotlite Shuffle 11/63 ..

### CONTINENTAL-APCO, INC.

CIGARETTE VENDORS  
Continental "30"; 30 sel., cap. 830  
Tobacco Shoppe "30"; 30 sel., cap. 830

### GARWOOD METAL CO., INC.

CIGARETTE VENDORS  
El Dorado; 13, 16, and 21 columns

### EXHIBIT SUPPLY CO.

Card Vender (Mechanical). Model  
412 "Vacuumatic." Vends Exhibit's  
Trading Cards. Capacity: 600 .. \$73.50  
(Including 3,000 FREE cards)  
Card Vender (Mechanical). Model  
X500 (2 push chutes). Vends Ex-  
hibit's Trading Cards. Capacity:  
1,000 Cards. .. \$49.50  
(Including 1,500 FREE Cards)  
Post Card Vender (Electrical).  
Models SV-1 & MSV "Vacuumatic."  
Vends Standard Scenic Post Cards.  
Capacity: 1,000 Cards. .. \$99.50  
(Slug rejector included)  
Plastic Laminator (Mechanical).  
Model 444PV "Vacuumatic." Vends  
laminating material. Capacity: 300. \$98.50

### FISCHER SALES & MFG. CO.

Empress 101 (101") ..  
Empress 92 (92") ..  
Crown One Hundred (100") ..  
Regent 91 (91") ..  
Regent 77 (77") ..  
Crown Fiesta—Reg. Bumper ..  
(Non Coin) Empire VIII (101") ..  
Empire VII (92") ..

### J. F. FRANTZ MFG. CO.

Little Leaguer (12/62) ..  
Double Header (12/62) ..  
Save Our Business ..  
U.S. Marshall 5¢ Gun ..  
Kicker & Catcher ..  
ABT Challenge Pistol ..  
ABT Guesser Scale ..  
ABT Rifle Sport ..  
Aristo Scale ..

### D. GOTTLIEB CO.

World Fair 1P (5/64) ..

### PAUL W. HAWKINS MFG.

Rodeo Pony .. \$ 845.00  
Ben Hur Chariot .. 645.00  
Twin Quarterhorse .. 575.00  
Derby Pony Jr. .. 550.00  
Sam The Clown .. 395.00

### IRVING KAYE CO., INC.

NON-COIN MODELS  
Deluxe Continental (4 1/2 x 9') ..  
Ambassador 70 (85" x 47") ..  
Ambassador 75 (92" x 52") ..  
Ambassador 80 (106" x 58") ..  
Ambassador 90 (114" x 64") ..  
Deluxe Eldorado 6 Pkt. Series ..  
Mark I, 77x45 ..  
Mark II, 85x47 ..  
Mark III, 92x52 ..  
Mark IV, 106x58 ..  
Mark V, 118x63 ..  
Deluxe Satellite, 77x45 ..  
Deluxe Klub Pool ..

Regular 56x40 ..  
Jumbo 75x43 ..

### J. H. KEENEY & CO.

Colorama 2P Pin (12/63) ..

### LEHIGH, INC.

CIGARETTE VENDORS  
"Smoke Center" M-156, M-220, M-220 AC;  
15 or 12 sel., 156 and 220 caps.  
Model M-407-AC; 19 sel., cap. 402

### MARVEL MFG. CO.

Slugger-Counter Baseball  
(1¢, 5¢, 10¢) ..

### MIDWAY MFG. CO.

Top Hit Baseball (3/64)

### NATIONAL VENDORS, INC.

CIGARETTE VENDORS  
Series 113; 13 8-column shifts, cap. 447  
Upright-Series 113; 13 8-col. shifts, cap. 447  
Crown series 222; 22 sel., cap. 616  
Crown series 800; 20 sel., cap. 850  
Console-Series 650; 20 sel., cap. 670  
Moduline-22M; 22 sel., cap. 616  
Moduline-80M; 20 sel., cap. 850

### REDD DISTRIBUTING CO.

Cinch Instant Shine Vendor ..  
(Vendor and packaged Cinch product)  
Giepen Coffee Vendor (Natl. Agents)  
Vend-A-Book Comic Book Vendor

### ROCK-OLA MFG. CO.

Caravella (20 Col. 800 Packs) Model 3002  
Cigarette Machine ..  
Model 425 160-Sel. (Grand Prix) 7" LP Del.  
St.-Mon. ..  
Model 418-SA 160-Sel. (Rhapsody II) 7" LP,  
Del. St.-Mon. ..  
Model 414 100-Sel. (Capri II) with St. Op-  
tional ..  
Model 403 100-Sel. Wall Phono (33-1/3 Op-  
tional) ..  
1628 Deluxe "Stereo Twins" Speakers ..  
1629 "Stereo Twins Jr" Speakers ..  
1950 Remote Volume Control Unit ..  
Model 500 160-Sel. Stereo Speaker Wallbox  
3 level personal pushbutton volume control  
1578 160-Sel. Wallbox ..  
1584 100-Sel. Wallbox ..  
1551 Universal Wall Box Bar Bracket ..  
1981 Money Counter for Model 425, 418-SA,  
& 414 ..  
Model TRLB-M—Coffee, Hot Chocolate, Soup  
Vendor—Batch fresh brew, modulator door  
and light, 600 cup capacity, coffee 4 ways,  
extra cream and sugar, whipped powdered  
chocolate, liquid sugar, liquid soup, fresh  
cream, with changer.  
Model 1403-S—Coffee, Hot Chocolate, Soup—  
Single cup fresh brew. 500 cup capacity.  
Coffee 4 ways, extra cream and sugar,  
with sugar and cream buttons a standard  
feature. (Extra strong coffee button kit,  
Model 2017, available for Model 1403-S.  
Also available as Model 1403 without hot  
whipped soup feature.)  
Model 1200—Coffee, Hot Chocolate, Soup—  
single cup fresh brew. 500 cup capacity.  
Coffee 4 ways, extra cream and sugar  
buttons are standard.  
Model 3402—Coffee, Hot Chocolate, Soup and  
Tea—(Compact Model). Single cup, fresh  
brew, serves coffee and tea 4 ways.  
Model 3403—as above, without 4 way tea  
feature.  
Model 450 Book-O-Mat/Shop-O-Mat, all pur-  
pose visual merchandiser—General sun-  
dries and pocket books, 40-Selections—ca-  
pacity variable on merchandise.  
Model 3300 Can Soft Drink Vendor, 4-flavors,  
200-can capacity, 32-cans precool storage.

### ROWE AC SERVICES

Rowe—AMI M-200 Phonograph with Auto-  
mix, Stereo-Round (Plays 33-1/3-45 stereo  
or monaural records, intermixed.) Has  
three-in-one convertibility, 200 selections,  
160 selections, or 100 selections.  
HAC-200 Hideaway, 200 Sel. Mon.  
HEB-200 Hideaway, 200 Sel. Selective Stereo  
CFA Stepper, CFD Stepper, WQ-100 100  
Sel. W.B., WQ-100 100 Sel. W.B., WQ-120  
120 Sel. W.B., WQ-200 200 Sel. W.B.,  
WQ-200 1 200 Sel. W.B., Dual Price Play,  
WQ-200-3 200 Sel. W.B., Dual Price Play,  
4-coin Rejector.  
F-10436 Bar Grip, W.B. Mounting Bracket  
EX-600 Cylindrical Wall Speaker  
EX-700 Wall Speaker  
L-2130 Ceiling Spkr., Choice of Grille  
Types Listed: L-2136 Random Pattern,  
L-2136 Uniform Pattern, L-2605 Circular  
Flush-Mount Grille  
Riviera Cigarette, 20 sel. 800 pack.  
Celebrity Cigarette Merchandiser, 14 selec-  
tion, 510 pack capacity, modular line.  
Ambassador Cig. Vendor 286; 14 sel., cap.  
510  
Celebrity Cig. Vendor 260; 20 sel., cap. 800  
Celebrity Candy Merchandiser, 11 selections,  
360 capacity, modular.  
77 Candy Merchandiser, 11 sel., 360 cap.  
Tasty 20 Candy Merchandiser, 20 sel.,  
560 cap.  
Celebrity Pastry Merchandiser, 5 selection,  
100 capacity, modular.  
Celebrity Hot Food Merchandiser, 7 selec-  
tion, 140 capacity, modular.  
Celebrity All Purpose Merchandiser, 130 ca-  
pacity, 130 selection, modular.  
Celebrity Fresh Brew Coffee Merchandiser,  
11 selection, 750 cup capacity, modular.  
Celebrity Cold Drink Merchandiser, 4 selec-  
tion, 1000 cup capacity, crushed ice fea-  
ture optional, modular.  
Dollar Bill Changer, 10 change combina-  
tions, up to \$300 bank capacity.  
Celebrity Condiment unit, accommodating  
oven, can opener, ketchup, mustard, salt,  
pepper, etc., modular.  
Customic Background Music (Tape Car-  
tridge)

### THE SEEBURG CORP.

LPC-1B (Blonde Cabinet) Stereo LP Con-  
sole, 100 Selection Phono.  
LPC-1BR (Blonde Cabinet) Stereo LP Con-  
sole, 160 Selection Phono, with remote  
control.  
LPC-1—Stereo LP Console, 160 Selection  
Phono.  
LPC-1R—Stereo LP Console, 160 Selection  
Phono, 160 Selection Phono.  
BMC-1—Background Music Compact  
BMC-2—Background Music Compact  
BMC-3—Background Music Compact  
BMC-4—Background Music Compact  
BMC-5—Background Music Compact  
BMC-6—Background Music Compact  
BMC-7—Background Music Compact  
BMC-8—Background Music Compact  
BMC-9—Background Music Compact  
BMC-10—Background Music Compact  
BMC-11—Background Music Compact  
BMC-12—Background Music Compact  
BMC-13—Background Music Compact  
BMC-14—Background Music Compact  
BMC-15—Background Music Compact  
BMC-16—Background Music Compact  
BMC-17—Background Music Compact  
BMC-18—Background Music Compact  
BMC-19—Background Music Compact  
BMC-20—Background Music Compact  
BMC-21—Background Music Compact  
BMC-22—Background Music Compact  
BMC-23—Background Music Compact  
BMC-24—Background Music Compact  
BMC-25—Background Music Compact  
BMC-26—Background Music Compact  
BMC-27—Background Music Compact  
BMC-28—Background Music Compact  
BMC-29—Background Music Compact  
BMC-30—Background Music Compact  
BMC-31—Background Music Compact  
BMC-32—Background Music Compact  
BMC-33—Background Music Compact  
BMC-34—Background Music Compact  
BMC-35—Background Music Compact  
BMC-36—Background Music Compact  
BMC-37—Background Music Compact  
BMC-38—Background Music Compact  
BMC-39—Background Music Compact  
BMC-40—Background Music Compact  
BMC-41—Background Music Compact  
BMC-42—Background Music Compact  
BMC-43—Background Music Compact  
BMC-44—Background Music Compact  
BMC-45—Background Music Compact  
BMC-46—Background Music Compact  
BMC-47—Background Music Compact  
BMC-48—Background Music Compact  
BMC-49—Background Music Compact  
BMC-50—Background Music Compact  
BMC-51—Background Music Compact  
BMC-52—Background Music Compact  
BMC-53—Background Music Compact  
BMC-54—Background Music Compact  
BMC-55—Background Music Compact  
BMC-56—Background Music Compact  
BMC-57—Background Music Compact  
BMC-58—Background Music Compact  
BMC-59—Background Music Compact  
BMC-60—Background Music Compact  
BMC-61—Background Music Compact  
BMC-62—Background Music Compact  
BMC-63—Background Music Compact  
BMC-64—Background Music Compact  
BMC-65—Background Music Compact  
BMC-66—Background Music Compact  
BMC-67—Background Music Compact  
BMC-68—Background Music Compact  
BMC-69—Background Music Compact  
BMC-70—Background Music Compact  
BMC-71—Background Music Compact  
BMC-72—Background Music Compact  
BMC-73—Background Music Compact  
BMC-74—Background Music Compact  
BMC-75—Background Music Compact  
BMC-76—Background Music Compact  
BMC-77—Background Music Compact  
BMC-78—Background Music Compact  
BMC-79—Background Music Compact  
BMC-80—Background Music Compact  
BMC-81—Background Music Compact  
BMC-82—Background Music Compact  
BMC-83—Background Music Compact  
BMC-84—Background Music Compact  
BMC-85—Background Music Compact  
BMC-86—Background Music Compact  
BMC-87—Background Music Compact  
BMC-88—Background Music Compact  
BMC-89—Background Music Compact  
BMC-90—Background Music Compact  
BMC-91—Background Music Compact  
BMC-92—Background Music Compact  
BMC-93—Background Music Compact  
BMC-94—Background Music Compact  
BMC-95—Background Music Compact  
BMC-96—Background Music Compact  
BMC-97—Background Music Compact  
BMC-98—Background Music Compact  
BMC-99—Background Music Compact  
BMC-100—Background Music Compact  
BMC-101—Background Music Compact  
BMC-102—Background Music Compact  
BMC-103—Background Music Compact  
BMC-104—Background Music Compact  
BMC-105—Background Music Compact  
BMC-106—Background Music Compact  
BMC-107—Background Music Compact  
BMC-108—Background Music Compact  
BMC-109—Background Music Compact  
BMC-110—Background Music Compact  
BMC-111—Background Music Compact  
BMC-112—Background Music Compact  
BMC-113—Background Music Compact  
BMC-114—Background Music Compact  
BMC-115—Background Music Compact  
BMC-116—Background Music Compact  
BMC-117—Background Music Compact  
BMC-118—Background Music Compact  
BMC-119—Background Music Compact  
BMC-120—Background Music Compact  
BMC-121—Background Music Compact  
BMC-122—Background Music Compact  
BMC-123—Background Music Compact  
BMC-124—Background Music Compact  
BMC-125—Background Music Compact  
BMC-126—Background Music Compact  
BMC-127—Background Music Compact  
BMC-128—Background Music Compact  
BMC-129—Background Music Compact  
BMC-130—Background Music Compact  
BMC-131—Background Music Compact  
BMC-132—Background Music Compact  
BMC-133—Background Music Compact  
BMC-134—Background Music Compact  
BMC-135—Background Music Compact  
BMC-136—Background Music Compact  
BMC-137—Background Music Compact  
BMC-138—Background Music Compact  
BMC-139—Background Music Compact  
BMC-140—Background Music Compact  
BMC-141—Background Music Compact  
BMC-142—Background Music Compact  
BMC-143—Background Music Compact  
BMC-144—Background Music Compact  
BMC-145—Background Music Compact  
BMC-146—Background Music Compact  
BMC-147—Background Music Compact  
BMC-148—Background Music Compact  
BMC-149—Background Music Compact  
BMC-150—Background Music Compact  
BMC-151—Background Music Compact  
BMC-152—Background Music Compact  
BMC-153—Background Music Compact  
BMC-154—Background Music Compact  
BMC-155—Background Music Compact  
BMC-156—Background Music Compact  
BMC-157—Background Music Compact  
BMC-158—Background Music Compact  
BMC-159—Background Music Compact  
BMC-160—Background Music Compact  
BMC-161—Background Music Compact  
BMC-162—Background Music Compact  
BMC-163—Background Music Compact  
BMC-164—Background Music Compact  
BMC-165—Background Music Compact  
BMC-166—Background Music Compact  
BMC-167—Background Music Compact  
BMC-168—Background Music Compact  
BMC-169—Background Music Compact  
BMC-170—Background Music Compact  
BMC-171—Background Music Compact  
BMC-172—Background Music Compact  
BMC-173—Background Music Compact  
BMC-174—Background Music Compact  
BMC-175—Background Music Compact  
BMC-176—Background Music Compact  
BMC-177—Background Music Compact  
BMC-178—Background Music Compact  
BMC-179—Background Music Compact  
BMC-180—Background Music Compact  
BMC-181—Background Music Compact  
BMC-182—Background Music Compact  
BMC-183—Background Music Compact  
BMC-184—Background Music Compact  
BMC-185—Background Music Compact  
BMC-186—Background Music Compact  
BMC-187—Background Music Compact  
BMC-188—Background Music Compact  
BMC-189—Background Music Compact  
BMC-190—Background Music Compact  
BMC-191—Background Music Compact  
BMC-192—Background Music Compact  
BMC-193—Background Music Compact  
BMC-194—Background Music Compact  
BMC-195—Background Music Compact  
BMC-196—Background Music Compact  
BMC-197—Background Music Compact  
BMC-198—Background Music Compact  
BMC-199—Background Music Compact  
BMC-200—Background Music Compact  
BMC-201—Background Music Compact  
BMC-202—Background Music Compact  
BMC-203—Background Music Compact  
BMC-204—Background Music Compact  
BMC-205—Background Music Compact  
BMC-206—Background Music Compact  
BMC-207—Background Music Compact  
BMC-208—Background Music Compact  
BMC-209—Background Music Compact  
BMC-210—Background Music Compact  
BMC-211—Background Music Compact  
BMC-212—Background Music Compact  
BMC-213—Background Music Compact  
BMC-214—Background Music Compact  
BMC-215—Background Music Compact  
BMC-216—Background Music Compact  
BMC-217—Background Music Compact  
BMC-218—Background Music Compact  
BMC-219—Background Music Compact  
BMC-220—Background Music Compact  
BMC-221—Background Music Compact  
BMC-222—Background Music Compact  
BMC-223—Background Music Compact  
BMC-224—Background Music Compact  
BMC-225—Background Music Compact  
BMC-226—Background Music Compact  
BMC-227—Background Music Compact  
BMC-228—Background Music Compact  
BMC-229—Background Music Compact  
BMC-230—Background Music Compact  
BMC-231—Background Music Compact  
BMC-232—Background Music Compact  
BMC-233—Background Music Compact  
BMC-234—Background Music Compact  
BMC-235—Background Music Compact  
BMC-236—Background Music Compact  
BMC-237—Background Music Compact  
BMC-238—Background Music Compact  
BMC-239—Background Music Compact  
BMC-240—Background Music Compact  
BMC-241—Background Music Compact  
BMC-242—Background Music Compact  
BMC-243—Background Music Compact  
BMC-244—Background Music Compact  
BMC-245—Background Music Compact  
BMC-246—Background Music Compact  
BMC-247—Background Music Compact  
BMC-248—Background Music Compact  
BMC-249—Background Music Compact  
BMC-250—Background Music Compact  
BMC-251—Background Music Compact  
BMC-252—Background Music Compact  
BMC-253—Background Music Compact  
BMC-254—Background Music Compact  
BMC-255—Background Music Compact  
BMC-256—Background Music Compact  
BMC-257—Background Music Compact  
BMC-258—Background Music Compact  
BMC-259—Background Music Compact  
BMC-260—Background Music Compact  
BMC-261—Background Music Compact  
BMC-262—Background Music Compact  
BMC-263—Background Music Compact  
BMC-264—Background Music Compact  
BMC-265—Background Music Compact  
BMC-266—Background Music Compact  
BMC-267—Background Music Compact  
BMC-268—Background Music Compact  
BMC-269—Background Music Compact  
BMC-270—Background Music Compact  
BMC-271—Background Music Compact  
BMC-272—Background Music Compact  
BMC-273—Background Music Compact  
BMC-274—Background Music Compact  
BMC-275—Background Music Compact  
BMC-276—Background Music Compact  
BMC-277—Background Music Compact  
BMC-278—Background Music Compact  
BMC-279—Background Music Compact  
BMC-280—Background Music Compact  
BMC-281—Background Music Compact  
BMC-282—Background Music Compact  
BMC-283—Background Music Compact  
BMC-284—Background Music Compact  
BMC-285—Background Music Compact  
BMC-286—Background Music Compact  
BMC-287—Background Music Compact  
BMC-288—Background Music Compact  
BMC-289—Background Music Compact  
BMC-290—Background Music Compact  
BMC-291—Background Music Compact  
BMC-292—Background Music Compact  
BMC-293—Background Music Compact  
BMC-294—Background Music Compact  
BMC-295—Background Music Compact  
BMC-296—Background Music Compact  
BMC-297—Background Music Compact  
BMC-298—Background Music Compact  
BMC-299—Background Music Compact  
BMC-300—Background Music Compact  
BMC-301—Background Music Compact  
BMC-302—Background Music Compact  
BMC-303—Background Music Compact  
BMC-304—Background Music Compact  
BMC-305—Background Music Compact  
BMC-306—Background Music Compact  
BMC-307—Background Music Compact  
BMC-308—Background Music Compact  
BMC-309—Background Music Compact  
BMC-310—Background Music Compact  
BMC-311—Background Music Compact  
BMC-312—Background Music Compact  
BMC-313—Background Music Compact  
BMC-314—Background Music Compact  
BMC-315—Background Music Compact  
BMC-316—Background Music Compact  
BMC-317—Background Music Compact  
BMC-318—Background Music Compact  
BMC-319—Background Music Compact  
BMC-320—Background Music Compact  
BMC-321—Background Music Compact  
BMC-322—Background Music Compact  
BMC-323—Background Music Compact  
BMC-324—Background Music Compact  
BMC-325—Background Music Compact  
BMC-326—Background Music Compact  
BMC-327—Background Music Compact  
BMC-328—Background Music Compact  
BMC-329—Background Music Compact  
BMC-330—Background Music Compact  
BMC-331—Background Music Compact  
BMC-332—Background Music Compact  
BMC-333—Background Music Compact  
BMC-334—Background Music Compact  
BMC-335—Background Music Compact  
BMC-336—Background Music Compact  
BMC-337—Background Music Compact  
BMC-338—Background Music Compact  
BMC-339—Background Music Compact  
BMC-340—Background Music Compact  
BMC-341—Background Music Compact  
BMC-342—Background Music Compact  
BMC-343—Background Music Compact  
BMC-344—Background Music Compact  
BMC-345—Background Music Compact  
BMC-346—Background Music Compact  
BMC-347—Background Music Compact  
BMC-348—Background Music Compact  
BMC-349—Background Music Compact  
BMC-350—Background Music Compact  
BMC-351—Background Music Compact  
BMC-352—Background Music Compact  
BMC-353—Background Music Compact  
BMC-354—Background Music Compact  
BMC-355—Background Music Compact  
BMC-356—Background Music Compact  
BMC-357—Background Music Compact  
BMC-358—Background Music Compact  
BMC-359—Background Music Compact  
BMC-360—Background Music Compact  
BMC-361—Background Music Compact  
BMC-362—Background Music Compact  
BMC-363—Background Music Compact  
BMC-364—Background Music Compact  
BMC-365—Background Music Compact  
BMC-366—Background Music Compact  
BMC-367—Background Music Compact  
BMC-368—Background Music Compact  
BMC-369—Background Music Compact  
BMC-370—Background Music Compact  
BMC-371—Background Music Compact  
BMC-372—Background Music Compact  
BMC-373—Background Music Compact  
BMC-374—Background Music Compact  
BMC-375—Background Music Compact  
BMC-376—Background Music Compact  
BMC-377—Background Music Compact  
BMC-378—Background Music Compact  
BMC-379—Background Music Compact  
BMC-380—Background Music Compact  
BMC-381—Background Music Compact  
BMC-3



# COIN MACHINE INVENTORY LISTS—USED EQUIPMENT

A Compilation of Phonographs and Amusement Machines Actively Traded On Used Coin Machine Markets—New Machines Are Listed Elsewhere in This Section

MUSIC MACHINES	Bounty (Bingo) (10/63)	Old Plantation (2/61)	Player's Choice (9/58)	K Del. Big Tent (5/59)	Mid Joker Ball (11/59)
AM I	Can-Can (10/61)	Black Dragon	Twin Bowler (10/58)	K Big 3 (5/59)	Midway Bazooka (10/60)
D-40, '51, 40 Sel.	Carnival (11/57)	El Rancho Hacienda	King Bowler (3/59)	K Touchdown (9/59)	Midway Shooting Gallery (2/60)
D-80, '51, 80 Sel.	Carnival Queen (11/58)	Rainbow (6/62)	Queen Bowler (9/59)	K Big Dipper (10/59)	Midway Del. Baseball (5/62)
E-40, '53, 40 Sel.	Circus (8/57)	Go-Cart IP (5/63)	Duke Bowler (8/60)	K Twin Big Tent	Mid. Target Gallery (7/62)
E-80, '53, 80 Sel.	Circus Queen (2/61)	Poker Face 2P (9/63)	Duchess Bowler (8/60)	Criss Cross Diamond (1/60)	Mid. Carn. Tgt. Gtry. (2/63)
E-120, '53, 120 Sel.	County Fair (10/59)	WILLIAMS	Princess (4/61)	K Red Arrow (4/60)	Mid. Slugger BB (3/63)
F-40, '54, 40 Sel.	Crossroads (1/56)	Beat The Clock (12/63)	Gold Crown (3/62)	Sweet Shawnee '60	Mid. Rifle Range (6/63)
F-80, '54, 80 Sel.	Cue-Tease 2P (7/63)	Big Daddy IP (9/63)	Royal Crown (8/62)	Black Dragon '60	Mid. Raceway (10/63)
F-120, '54, 120 Sel.	Cypress Gardens (6/58)	Big Deal IP (2/63)	Grand Prize (3/63)	K Twin Red Arrow (5/60)	Mid. Winner 2P (12/63)
G-80, '55, 120 Sel.	Double Header (7/56)	Black Jack IP (1/60)	Official Spare Lite (9/63)	K Flashback (6/61)	Mills Panorama Peek (11/54)
G-120, '55, 120 Sel.	Funspot '62 (11/62)	Casino 17P (10/58)	SHUFFLES—BOWLERS	ABT 6 Gun Rifle Range	Munves Bike Race (5/58)
G-200, '56, 200 Sel.	Flying Circus 2P (6/61)	Club House IP (10/59)	UNITED	Air Football	Munv. Sat. Trkr. (5/59)
H-120, '57, 120 Sel.	Golden Gate (6/62)	Coquette (4/62)	Shuffles	Air Hockey	Mu Atomic Bomber
H-200, '57, 200 Sel.	Hootenanny (Pin) IP (11/63)	Crossword IP (4/59)	Clipper (5/55)	Auto Photo Model 9	Mu Ace Bomber
I-100M, '58, 100 Sel.	Key West (12/56)	Darts IP (6/60)	5th Inning (6/55)	Amer. Shuffle Situation (5/61)	Mu Dr. Mobile
I-200M, '58, 200 Sel.	Laguna Beach (3/60)	El Toro 2P (8/63)	Capitol (6/55)	B Undersea Raider	Mu Fly Saucers
I-200E, '58, 200 Sel.	Lido (2/62)	Fiesta 2P (12/59)	Super Bonus (9/55)	B Derby Gun (2/60)	Muto Lord's Prayer
J-200K, '59, 200 Sel.	Lite-A-Line (2/61)	Four Roses IP (12/62)	Deluxe model	B Bulls Eye Shooting Gallery (9/55)	Mu Photo (Pre-War)
J-200M, '59, 200 Sel.	Lotta-Fun (9/59)	Four Star IP (7/58)	Top Notch (10/55)	B Big Inning (5/58)	Mu Photo (DeLuxe)
J-120, '59, 120 Sel.	Miami Beach (9/54)	Gay Paree (6/57)	Regulation (11/55)	B Heavy Hitter (4/59)	Mu Silver Gloves
K-200, '60, 200 Sel.	Miss America (2/58)	Gldn. Bells IP (9/59)	6-Star (10/57)	B Ball Park (4/60)	Mu Sky Fighter
K-120, '60, 120 Sel.	Monte Carlo IP (Pin) (2/64)	Gldn. Gloves IP (1/60)	Midget Bowling (3/58)	B Sharpshooter (2/61)	Muto Voice-O-Graph
Continental '60, 200 Sel.	Moonshot (3/63)	Gusher IP (9/58)	Shooting Stars (4/58)	B Golf Champ (8/58)	Pre-War Model
Lyric, '60, 100 Sel.	Night Club (4/56)	Jig Saw IP (12/57)	Eagle (5/58)	B Bat. Practice (8/59)	Post-War Model
Continental 2, '61, 200 Sel.	Parade (6/56)	Jumpin' Jacks 2P (4/63)	Atlas (8/58)	B Skill Roll (B 3/58)	Mu K. O. Champ
Continental 2, '61, 100 Sel.	Queens (Beh., Is., Trop.) (3/60)	Jungle IP (9/60)	Cyclone (10/58)	B Moon Raider (7/59)	Mu Drive Yourself
ROCK-OLA	Roller Derby (6/60)	Kingpin (9/62)	Niagara (11/58)	B Target (10/59)	Mu Bang-O-Rama (4/57)
1436, '52, Fireball, 120 Sel.	Sea Island (2/59)	Kings IP (8/57)	Dual (1/59)	B Spook Gun (9/58)	Philadelphia Toboggan
1436A, '53, Fireball, 120 Sel.	Ship-Mates 4P (2/64)	Mardi Gras 4P (11/62)	Zenith (6/59)	B Skill Derby (10/60)	Skee Alley
1438, '54, Comet, 120 Sel.	Shoot-A-Line (6/62)	Merry Widow 4P (10/63)	Flash (6/59)	B Del. Skill Parade (4/59)	Scientific Pitch 'Em
1446, '54, HiFi, 120 Sel.	Show Time (3/57)	Music Man 4P (8/60)	3-Way (9/59)	B Table Hockey (2/63)	Seeburg Bear Gun
1488, '55, HiFi, 120 Sel.	Silver Sails (11/62)	Naples 2P (9/57)	4-Way (12/59)	B Spinner (2/63) Novelty	Seeburg Coon Hunt
1452, '55, 50 Sel.	Sky Diver IP (4/64)	Nags IP (3/60)	Big Bonus (2/60)	B Bank Ball (1/63)	Set Shot Basketball
1454, '56, 120 Sel.	Star Jet (Pin) 2P (12/63)	Oh, Boy 2P (2/64)	Sunny (5/60)	B Fun Phone (3/63)	Southland's Speedway (6/63)
1455, '57, 200 Sel.	Sun Valley (7/57)	Reno IP (10/59)	Sure Fire (10/60)	CC Bullseye Baseball	Southland Fast Draw '63
1458, '58, 120 Sel.	Sun Valley (7/57)	Rocket IP (11/59)	Line-Up (1/61)	CC Basketball Champ	Southland Time Trials (9/63)
1465, '58, 200 Sel.	Target Roll (1/58)	Satellite IP (7/58)	5-Way (5/61)	CC 4-Player Derby	Teleguiz
1475, '59, 200 Sel. Tempo I	3-In-Line 4P (8/63)	Sea Wolf IP (7/59)	Avalon (4/62)	CC Coalee	Un Jungle Gun
1468, '59, 120 Sel. Tempo I	Touchdown (11/60)	Serenade 2P (5/60)	Silver (6/62)	CC Midget Skee Super model	Un Carn. Gun (10/54)
1485, '60, 200 Sel. Tempo II	Twist (11/62)	Skill Pool IP (6/63)	Shuffle Baseball (6/62)	CC Big League (5/55)	Un Bonus Baseball (3/62)
1478, '60, 120 Sel. Tempo II	U.S.A. (8/58)	Space Ship 2P (12/61)	Action (7/62)	CC Twin Hockey (5/56)	Un Bonus Gun (1/55)
1495, '61, 200 Sel. Regis	CHICAGO COIN	Starfire (1/57)	Embassy (9/62)	CC Shoot The Clown	Un Star Slugger (7/55)
1488, '61, 120 Sel. Regis	Sun Valley (8/63)	Steeplechase IP (11/57)	Circus Roll-Down (9/62)	CC Stm. Shovel (5/56)	Un Spr. Slugger (4/56)
1496, '62, 120 Sel. Empress	Firecracker 2P (12/63)	Swing Time IP (5/53)	Lancer (11/62)	CC Batter Up (4/58)	Un Pirate Gun (10/56)
1497, '62, 200 Sel. Empress	GOTTLIEB	10 Strike 2P (1/58)	Sparky (12/62)	CC Criss Cross	Un Yankee BB (3/59)
1493, '62, 100 Sel. Princess	Around Wild 2P (7/59)	3-D IP (11/58)	Caravelle (2/63)	CC Criss Cross Hockey (10/58)	Un Sky Raider (10/58)
SEEBURG	Atlas 2P (5/59)	Tic Tac-Toe IP (1/59)	Crest (4/63)	CC Croquet (8/58)	Wm. Del. BB (4/53)
M100A, '51, 100 Sel.	Big IP (1/64)	Tom-Tom 2P (1/63)	Rumpus Targette (5/63)	CC Playland Rifle	Wm. Major Leagner
M100B, '51, 100 Sel.	Brite Star 2P (4/58)	Top Hat (10/58)	Astro (6/63)	CC Gallery (8/59)	Wm. Big Lg. BB (2/54)
M100BL, '51, 100 Sel.	Captain Kidd 2P (7/60)	Trade Winds (6/62)	Ultra (8/63)	CC Pony Express (4/60)	Wm. Jet Fighter (10/54)
Light Cab	Contest 4P (10/58)	Turf Champ (8/58)	Skippy (11/63)	CC Rav Gun (10/60)	Wm. Safari (2/54)
M100C, '52, 100 Sel.	Contl. Cafe 2P (7/57)	Twenty-One IP (2/60)	Jill-Jill (11/63)	CC Wild West (5/61)	Wm. Polar Hunt (3/55)
HF100G, '53, 100 Sel.	Cover Girl 1-Plyr. (7/62)	Valient 2P (8/62)	Topper (2/64)	CC Long Range Rifle	Wm. Sidewalk Eng (4/55)
HF100R, '54, 100 Sel.	Criss Cross IP (3/58)	Vagabond (10/62)	Tempest (2/64)	CC All-Star Baseball (1/63)	Wm. King of Swat (5/55)
V200, '55, 200 Sel.	Dneg. Dolls IP (6/60)	Viking 2P (10/61)	Ball Bowlers	CC Big Hit (10/62)	Wm. 4-Bagger (4/56)
VL200, '56, 200 Sel.	Dbl. Action 2P (1/59)	SHUFFLES—BOWLERS	Bowling Alley (11/56)	CC Pro Basketball (6/61)	Wm. Crane (10/56)
KD200H, '57, 200 Sel.	Egg Head IP (12/61)	BALLY	Jumbo Bowling (9/57)	CC Riot Gun (6/63)	Wm. Penny Clown (12/56)
L100, '57, 100 Sel.	Fair Lady (12/56)	Shuffles	Royal Bowler (12/57)	Ex Gun Patrol	Wm. 1957 Baseball
201, '58, 200 Sel.	Falstaff 4P (11/57)	ABC Bowler (7/55)	Pixie Bowler (8/58)	Ex Jet Gun	Wm. 10-Strike (12/57)
161, '58, 160 Sel.	Fashion Show 2P (6/62)	Jumbo Bowler (9/55)	Duplex (11/58)	Ex Space Gun	Wm. Pinchhitter (4/59)
222, '59, 160 Sel.	Flagship (1/57)	King Pin Bowler (9/55)	Simplex (5/59)	Ex Pony Express	Wm. Vanguard (10/58)
220, '59, 100 Sel.	Flipper IP (11/60)	ABC Spr. Del. (9/57)	Advance (5/59)	Ex Six Shooter	Wm. Hercules (2/59)
Q-160, '60, 160 Sel.	Flipper Clown (4/62)	All-Star Bowling (12/57)	League (10/59)	Ex Shooting Gal. (6/54)	Wm. Crusader (6/59)
Q-100, '60, 100 Sel.	Flipper Cowboy 1-P (10/62)	All-Star Deluxe (2/58)	Handicap (11/59)	Ex Star Shtg. Gal. (9/54)	Wm. Titan (8/59)
AY1005, '61, 160 Sel.	Flipper Fair IP (11/61)	Lucky Shuffle (9/58)	Teammate (12/59)	Ex Sportland Shooting Gallery (11/54)	Wm. Del. Bat. Champ (5/61)
AY1005, '61, 100 Sel.	Flpr. Parade (5/61)	Star Shuffle (10/58)	Falcon (4/60)	Ex "500" Shooting Gallery (3/55)	Wm. Extra Inning (5/62)
DS 160, '62, 160 Sel.	Foto Finish IP (1/61)	Speed Bowler (11/58)	Savoy (5/60)	Ex Treasure Cove Shooting Gal. (6/55)	Wm. World Series (5/62)
DS 100, '62, 100 Sel.	Flying Chariots 2P (10/63)	Club Bowler (2/59)	Bowl-A-Rama (9/60)	Ex Jungle Hunt (3/57)	Wm. Road Racer (5/62)
WURLITZER	Gaucho 4P (1/63)	Club Deluxe (5/59)	Tip Top (10/60)	Ex Ringer Ball (11/56)	Bally Champion Horse
1250, '50, 48 Sel., 45 or 78 RPM	Gigi IP (12/63)	Monarch Bowler (11/59)	Dixie (1/61)	Ex Pop Gun (9/57)	Bally Moon Ride
1400, '51, 48 Sel., 45 or 78 RPM	Gondolier 2P (8/58)	Official Jumbo (9/60)	Cameo 5-Star Bowling (5/61)	Ge Lucky Seven	Wm. Official Baseball (4/60)
1450, '51, 48 Sel., 45 or 78 RPM	Hi-Diver IP (4/59)	Jumbo Deluxe (9/60)	Classic (6/61)	Ge Sky Gunner	Wm. Major League (3/63)
1500, '52, 104 Sel., 45 & 78 Intermix	Kewpie Doll IP (10/60)	Ball Bowlers	Alamo (4/62)	Ge Night Fighter	Wm. Voice-O-Graph 1962
1500 A, '53, 104 Sel., 45 & 78 Intermix	Lancer 2P (8/61)	ABC Bowl. Lane (1/57)	Sahara (7/62)	Ge 2-Player Basketball	KIDDIE RIDES
1600, '53, 48 Sel., 45 & 78 Intermix	Liberty Belle 4P (3/62)	ABC Tournament (6/57)	Tropic Bowler (9/62)	Ge Rifle Gal. (6/54)	Bally Champion Horse
1650, '53, 38 Sel.	Ltng. Ball IP (12/59)	ABC Champion (10/57)	Lucky (11/62)	Ge Big Top Rifle	Bally Moon Ride
1650A, '54, 48 Sel.	Lite-A-Card 2P (3/60)	Strike Bowler (11/57)	Cypress (12/62)	Ge Gallery (6/54)	Pony Twins
1700, '54, 104 Sel.	Mademoiselle 2P (11/59)	Trophy Bowler (4/58)	Sabre (2/63)	Ge Super model (12/55)	Bally Space Ship
1800, '55, 104 Sel.	Majestic (4/57)	Lucky Alley (8/58)	Regal (4/63)	Ge Gnn Club	Bally Speed Boat
1900, '56, 200 Sel.	Melody Lane 2P (9/60)	Pan American (6/59)	Fury (8/63)	Ge Wild West Gun (2/55)	Bert Lane Lancer Horse
2000, '56, 200 Sel.	Mry-Go-Round 2P (12/60)	Challenger (9/59)	Futura (12/63)	Ge Sky Rocket Rifle	Bert Lane Merry-Go-Round
2100, '57, 200 Sel.	Miss Annabelle IP (8/59)	Super Shuffle (12/61)	WILLIAMS	Ge Championship	B.L. Miss America Boat
2104, '57, 104 Sel.	Oklahoma 4P (2/61)	Big 7 Shuffle (9/62)	Ball Bowlers	Ge Baseball (9/55)	Bert Lane Fire Engine
2150, '57, 200 Sel.	Olympics 1-P (9/62)	CHICAGO COIN	Roll-A-Ball (12/56)	Ge Quarterback (10/55)	B.L. Whirlybird (3/61)
2200, '58, 200 Sel.	Picnic 2P (10/58)	Shuffles	6 Player	Ge Hi Fly Baseball (5/56)	B.L. Moon Rocket (3/61)
2204, '58, 104 Sel.	Preview 2-P (8/62)	Triple Strike (2/55)	UPRIGHTS	Ge State Fair Rifle Gal. (6/56)	Capitol Donald Duck
2250, '58, 200 Sel.	Qun. of Diam. (6/59)	Arrow (2/55)	AB Circus (5/56)	Ge Davy Crockett (10/56)	Capitol Elsie
2300, '59, 200 Sel.	Race Time 2P (3/59)	Cr. Cross Targette (1/55)	AB County Fair (3/57)	Ge Circus Rifle (3/57)	Capitol Palomina Horse
2304, '59, 104 Sel.	Rack-A-Ball IP (12/62)	Bonus Score (4/55)	AB Circus Wagon	Ge Motorama (10/57)	Capitol See Saw
2310, '59, 100 Sel.	Rocket Ship IP (5/58)	Hollywood (5/55)	Wheels (12/58)	Ge Gypsy Grandma (5/57)	Chicago Coin Super Jet
2400, '60, 200 Sel.	Roto Pool IP (7/58)	Blinker (8/55)	AB Galloping Dominos	Ge Fun Fair (5/58)	World Trainer
2404, '60, 104 Sel.	Royal Flush (5/57)	Score-A-Line (9/55)	AB Circus Play Ball (4/59)	Ge Space Age Gun (6/58)	Deco Merry-Go-Round
2410, '60, 100 Sel.	Seven Seas 2P (1/60)	Bowling Team (10/55)	AB Magic Mirror	Ke Air Raider	Deco Space Ranger
2500, '61, 200 Sel.	Showboat IP (4/61)	Rocket Shuffle (3/58)	Horoscope (11/59)	Ke Sub Gun	Exhibit Big Broncho
2504, '61, 104 Sel.	Silver IP (10/57)	Explorer Shuffle (6/58)	AB Mermaid (3/60)	Ke Snortland DeLuxe model	Exhibit Mustang
2510, '61, 100 Sel.	Sittin' Pretty IP (11/58)	ReBound Shuffle (12/58)	AquatiProd.Squirts (11/57)	Ke Ranger (3/58)	Exhibit Sea Skates
2600, '62, 200 Sel.	Spot-A-Card IP (3/60)	Championship (11/58)	B Jumbo (5/59)	Ke Two-Gun Fun (3/62)	Exhibit Space Patrol
2610, '62, 100 Sel.	Str. Flush IP (12/57)	Double Feature (12/58)	B Sportsman (6/59)	Mid Red Ball (5/59)	Exhibit Rudolph The Reindeer
PINGAMES	Straight Shooter (2/59)	Red Pin (2/59)	B Jamboree (10/60)		
BALLY	Sunset 2-player (11/62)	Bowl Master (8/59)	B Super Jumbo (11/60)		
Acapulco (5/61)	Sunshine IP (10/58)	4-Game Shuffle (11/59)	CC Star Rocket (5/59)		
Barrel-O-Fun (9/60)	Spr. Circus 2P (10/57)	Bull's Eye Drop Ball (12/59)	GA Skee Shoot (1/57)		
Barrel-O-Fun '61 (4/61)	Sweet Hearts IP (9/63)	6-Game Shuffle (6/60)	GA Super Hunter (6/57)		
Barrel-O-Fun '62 (11/61)	Sweet Sioux 4P (9/59)	Triple Gold Pin Pro (2/61)	GA Double Shot (4/58)		
Ballerina (6/59)	Swing Along 2P (7/63)	Starlite (5/62)	GA Wild Cat (12/58)		
Beach Beauty (11/56)	Texan 4P (4/60)	Citation (10/62)	GA Spr. Wild Cat		
Beach Time (9/58)					

UNITED'S

# TORNADO

## BOWLING ALLEY

**NEW**  
**Flash-Bonus**  
**SCORING**

with  
**NEW**  
**HIGH**  
**SCORES**

**NEW**  
**Bonus**  
**SCORING**

**Dual-Flash**  
**SCORING**

**FAST**  
**4-Reel**  
**Score Totalizers**

**Flash**  
**SCORING**

**FLUORESCENT**  
**LIGHTING**

**Regulation**  
**SCORING**  
•  
**TOP SCORE**  
**300**

**Handicap Feature**  
**EASY STRIKE** OR **NORMAL STRIKE**

Standard  
**10¢ Play**  
\*  
**DOUBLE-NICKEL-DIME-QUARTER**  
**HALF-DOLLAR PLAY**  
(Optional at Extra Cost)  
\*  
**STAINLESS STEEL**  
**ENCLOSURE**

**1 TO 6**  
**CAN**  
**PLAY**

**4**  
**Roller-Type**  
**Game**  
**Leveling**  
**Casters**

Available in  
13 FT. and 16 FT.  
Standard Lengths  
4 FT. and 8 FT. Sections  
are available to  
increase lengths as desired

Designed by the  
**ORIGINATOR**  
of Coin-Operated  
**SHUFFLE ALLEYS**  
and  
**BOWLING ALLEYS**

See United's Fabulous New  
**BANK POOL**  
**NOW AT**  
**YOUR**  
**DISTRIBUTOR**

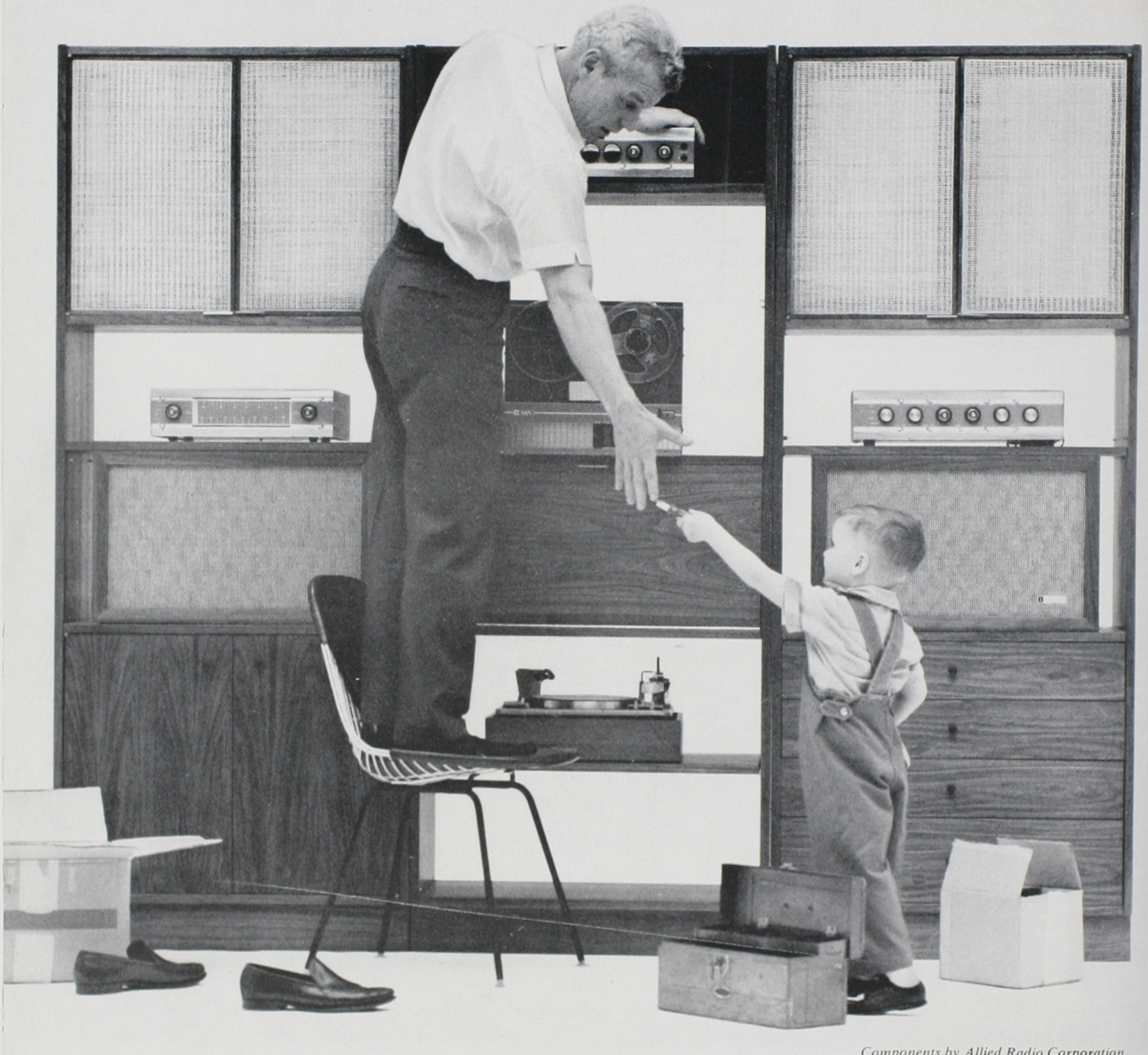
13 Ft. Shipping Weight (Crated) 740 lbs.  
16 Ft. Shipping Weight (Crated) 775 lbs.

**HIGHEST RESALE VALUE**

**ORDER FROM YOUR UNITED DISTRIBUTOR TODAY!**

UNITED MANUFACTURING COMPANY • 3401 NORTH CALIFORNIA AVE., CHICAGO 18, ILLINOIS • CABLE ADDRESS: UMCO

# You'd have to be a stereo bug to top ROCK-OLA sound



Components by Allied Radio Corporation

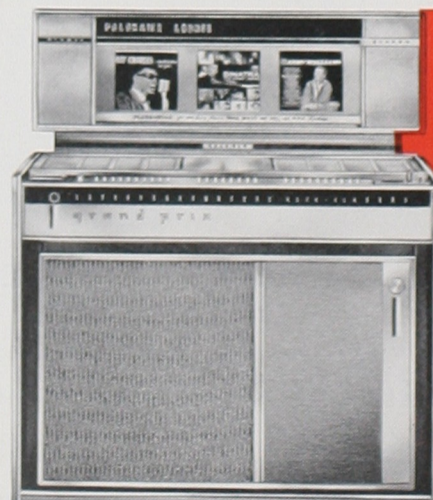
It's a new world of sound . . . so good that even if you built your own system with the most expensive equipment, Rock-Ola full dimensional stereo sound would still go you one better.

Our versatile new Grand Prix proves it . . . by reproducing today's greatest sounds with stereophonic fidelity unmatched by any other machine . . . on 7" LP's, on singles, on 33 $\frac{1}{3}$  or 45 rpm records in any intermix. It's the prestige phonograph for all locations . . . styled to look right . . . engineered to perform perfectly in a location of any size or shape, neighborhood spot or downtown club.

**More Profits with Stereo Phonette.** The remarkable new Rock-Ola Phonette coin-activated remote speaker-selector unit brings private listening pleasure to any booth or bar location . . . collects extra profits on every play. Best of all, it can be used with any current model Rock-Ola phonograph—Capri, Rhapsody, or the new 1964 Grand Prix.

A new world of profit . . . that's what Rock-Ola brings you . . . along with a brand new world of unsurpassed stereo sound.

## the 1964 GRAND PRIX...the prestige phonograph for all locations



Look to  
**ROCK-OLA**

for advanced products  
for profit

ROCK-OLA MANUFACTURING  
CORPORATION  
800 North Kedzie Avenue  
Chicago, Illinois 60651