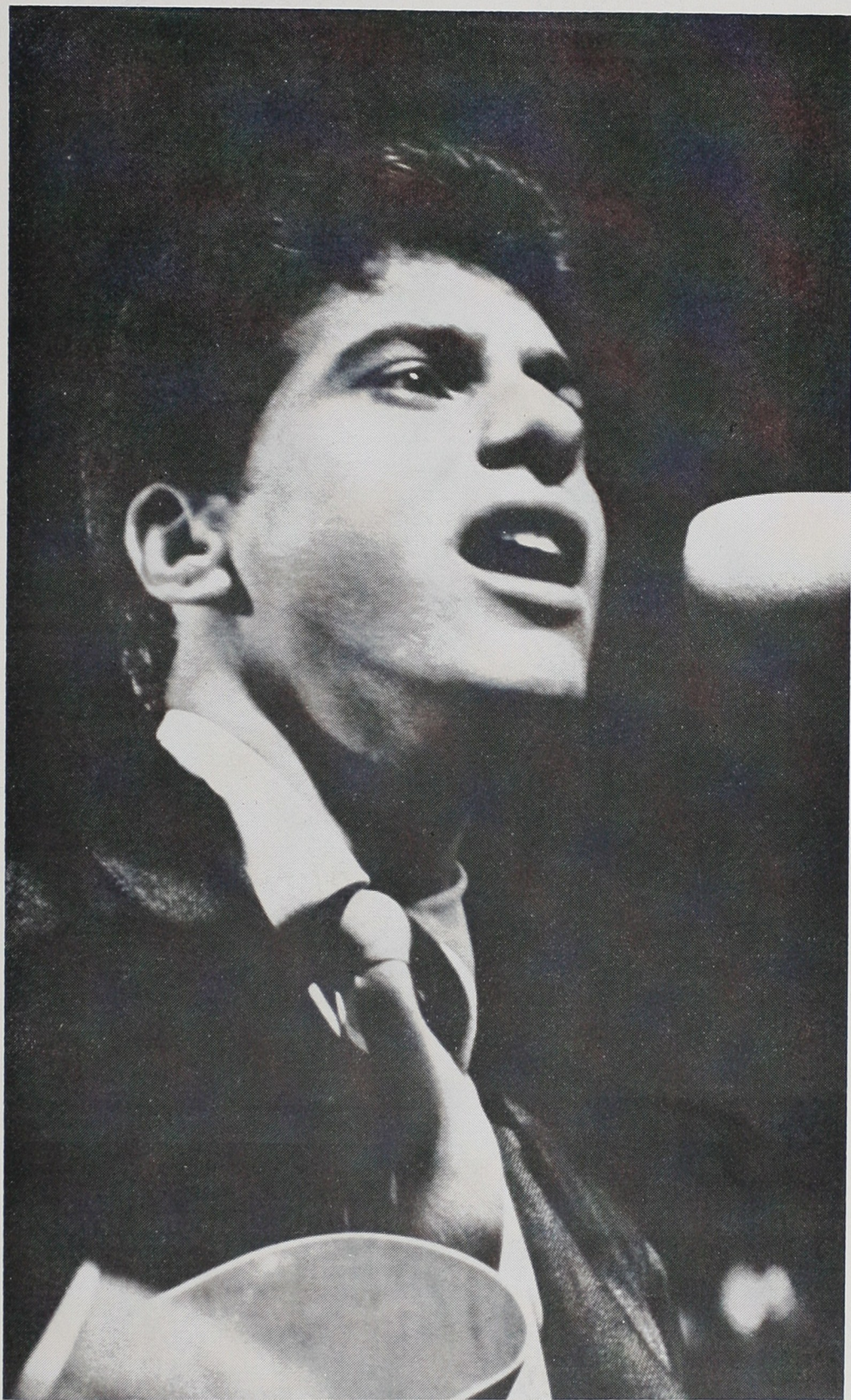


# Cash Box

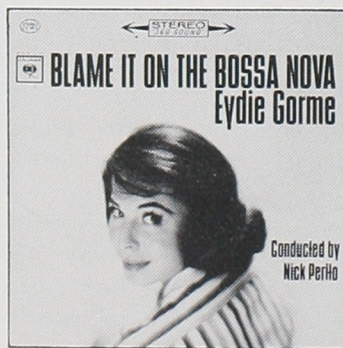
JULY 18, 1964



A young man in a hurry is Johnny Rivers, who in a few short weeks has catapulted to the top in the music world. His first single for Imperial, "Memphis," is one of the nation's hottest; his album, "Johnny Rivers At The Whisky A Go Go," recorded live at the Hollywood nitery by Lou Adler of Dunhill Productions (pictured on left with Bob Skaff, Imperial chief), is number 15 on this week's chart. Johnny will be seen on the first Jack Paar Show next season on September 25. He will tour this country and Europe in the coming months.



## Direct Line to a Hit!



Call your local Columbia Distributor today and order this fast breaking product

N  
 JOE O  
 NORM  
 GEOR  
 EDITO  
 M.  
 IR  
 IR  
 DI  
 BO  
 MI  
 JE  
 ADVE  
 JE  
 MA  
 NE  
 LE  
 JA  
 GE  
 ADVE  
 See  
 Bel  
 MANA  
 MA  
 T.  
 NE  
 62  
 HOLLAN  
 The  
 GERMA  
 28, M  
 ITALY:  
 Legio  
 SCANDI  
 holm  
 Tel:  
 FRANCE  
 Paris  
 AUSTRAL  
 Heath  
 BELGIUM  
 Paul  
 71.57  
 MEXICO:  
 1870  
 ARGENT  
 3978  
 BRAZIL:  
 gуста  
 61.38  
 CANADA  
 Montr  
 JAPAN:  
 Editor  
 466 H  
 SPAIN: I  
 Apart  
 SUBSCR  
 where in t  
 lass posta  
 Copyright  
 Co., Inc. A  
 Universal C



FOUNDED BY BILL GERSH

# Cash Box

Vol. XXV—Number 45

July 18, 1964

## Cash Box

(Publication Office)

1780 Broadway

New York 19, N. Y.—10019

(Phone: JUdson 6-2640)

CABLE ADDRESS: CASHBOX, N. Y.

JOE ORLECK, President and Publisher  
NORMAN ORLECK, Vice President  
GEORGE ALBERT, Vice President

### EDITORIAL—Music

MARTY OSTROW, Editor-in-Chief  
IRA HOWARD, Editor  
IRV LICHMAN, Editor  
DICK ZIMMERMAN, Editorial Assistant  
BOB ETTINGER, Editorial Assistant  
MIKE MARTUCCI, Editorial Assistant  
JERRY ORLECK, Editorial Assistant

### ADVERTISING

JERRY SHIFRIN, Nat'l. Adv. Dir. of Music  
MARTY TOOHEY, Nat'l. Dir.—Coin Machine  
NEIL BOGART, N.Y.C., Music  
LEE BROOKS, Manager, Chicago  
JACK DEVANEY, Manager, Los Angeles  
GEORGE GOLDMAN, Art Director

### ADVERTISING: INTERNATIONAL

See List of International Representatives Below

### MANAGERS

MARTY TOOHEY, Coin Machine Dept.  
T. TORTOSA, Circulation  
NEVILLE MARTEN, European Director

### CHICAGO

LEE BROOKS  
29 E. Madison St., Chicago 2, Ill.  
(All Phones: FInancial 6-7272)

### HOLLYWOOD

JACK DEVANEY  
6290 Sunset Blvd., Hollywood 28, Cal.  
(Phone HOLlywood 5-2129)

### ENGLAND

NEVILLE MARTEN  
Dorris Land  
9a New Bond St.  
London, W1, Eng.  
Tel: Hyde Park 2868

HOLLAND: PAUL ACKET, Theresiastraat 81a,  
The Hague, Holland, Tel: 070-722546

GERMANY: MAL SONDOCK, Amalienstrasse  
28, Munich, Germany, Tel: 220197

ITALY: MARIO PANVINI ROSATI, Viale  
Legioni Romane 5 Milan, Tel: 4073963

SCANDINAVIA: SVEN G. WINQUIST, Kagge-  
holmshvagen 48, Stockholm-Enskede, Sweden,  
Tel: 59-46 85

FRANCE: ROGER SELLAM, 36 rue de Moscou,  
Paris, France, Tel: Laborde 8523

AUSTRALIA: RON TUDOR, 8 Francis St.,  
Healthmont, Victoria, Tel: 87-5677

BELGIUM: FRANS ROMEYNS,  
Paul Hymanslaan, 8, Brussels 15, Tel:  
71.57.51

MEXICO: ENRIQUE ORTIZ, Insurgentes Sur  
1870 Mexico 20, D. F., Tel: 24-65-57

ARGENTINA: MIGUEL SMIRNOFF, Rafaela  
3978, Buenos Aires, Argentina, Tel: 69-1538

BRAZIL: LUIS DE M. C. GUEDES, Rua Au-  
gusta 2110, sobre-loja, Soa Paulo, Tel:  
61.38.13

CANADA: JOHN MURPHY, 1455 Drummon dSt.,  
Montreal 25, Que., Can., Tel: (514) 845 3201

JAPAN: Adv. Mgr.: SHOICHI KUSANO  
Editorial Mgr.: Morihiro Nagata  
466 Higashi-Oizumi Nerimaku, Tokyo

SPAIN: FEDERICO HALPERN, Sagasta 23,  
Apartado 4025, Madrid, Spain

SUBSCRIPTION RATES \$15 per year any-  
where in the U. S. A. Published weekly. Second  
class postage paid at Bristol, Conn.

Copyright © 1964 by The Cash Box Publishing  
Co., Inc. All rights reserved. Copyright under  
Universal Copyright Convention.

# GLOBAL PROMO

The concept of a one-world music market continues on its inexorable course toward fruition. Sometimes it takes great dramatic events — the Beatles' triumph to name one — to bear this out.

But, one mustn't neglect a subtle flow of developments that goes unnoticed, yet, when evaluated, is a clear index of global thinking when it comes to disks.

As a music trade publication, we are naturally inundated with a vast array of written material and photos that pertains to a particular disk attraction. The source is either the performer's disk affiliation or the numerous publicity firms that deal almost exclusively in keeping disk acts in the consumer and/or music trade eye.

For sometime now, we have been receiving such material from cities other than New York, Chicago, Hollywood or, in fact, any other American city.

You'll have to try some foreign city to get the answer. Yes, our offices in New York are receiving—with greater frequency each week—advance promo word on disk acts from a number of foreign countries. Even new disk releases are sometimes part of the promo package.

A highly interesting feature of this material is that some of it involves performers who are not only completely unknown to U.S. disk buyers, who have yet to be offered any releases by them, but may just be starting out in their native countries! To those who are somewhat myopic and cannot visualize the

one-world market idea, this may seem strange, indeed. But, there is method to this "madness." The world over disk acts today spring up with overnight success, and, before you know it, their wares are available to a world-wide audience.

The label that believes it's got that new sensation is, in our view, making the proper move when it sees the need for exploiting its find with a world release schedule in mind.

Astute manager Brian Epstein, the man who guides the careers of the Beatles and other English disk attractions, has gone as far as to open an office in New York, directed by a female English flack, for the U.S. exploitation of his established stable of stars and his new discoveries.

Though it hasn't been fully realized yet, isn't it natural for some American label to station its own man or a man representing a group of labels in foreign locales for similar reasons?

Advanced legwork on a new performer or one who is already recognized, but may have news value, is bound to make disk appearances by these artists easier to put over—whether this procedure is followed for the U.S. market or countless others.

World-wide publicity is a newer music industry function that has much to say to the trade. It boils down to the arrival in the near future of global thinking on an artist even before he walks into the recording studio.



# Cash Box TOP 100



JULY 18, 1964

	Position 7/11	7/4		Position 7/11	7/4		Position 7/11	7/4
<b>1 RAG DOLL</b> (Saturday, Gavadima—ASCAP) ☆FOUR SEASONS-Philips-40211	1	3	<b>35 WHAT'S THE MATTER WITH YOU BABY</b> (Jobete—BMI) ☆MARVIN GAYE & MARY WELLS-Motown-1057	25	33	<b>69 FIRST NIGHT OF THE FULL MOON</b> (Famous—ASCAP) ☆JACK JONES-Kapp-589	77	84
<b>2 I GET AROUND</b> (Sea Of Tunes—BMI) ☆BEACH BOYS-Capitol-5174	3	1	<b>36 I'LL BE IN TROUBLE</b> (Jobete—BMI) ☆TEMPTATIONS-Gordy-7032	34	32	<b>70 PEOPLE SAY</b> (Trio—BMI) ☆DIXIE CUPS-Red Bird-10-006	—	—
<b>3 MEMPHIS</b> (Arc—BMI) ☆JOHNNY RIVERS-Imperial-66032	2	2	<b>37 REMEMBER ME</b> (Gil—BMI) ☆RITA PAVONE-RCA-8365	35	35	<b>71 C'MON AND SWIM</b> (Taracrest—BMI) ☆BOBBY FREEMAN-Autumn-2	78	79
<b>4 CAN'T YOU SEE THAT SHE'S MINE</b> (Beechwood—BMI) ☆DAVE CLARK FIVE-Epic-9692	5	18	<b>38 WHERE DID OUR LOVE GO</b> (Jobete—BMI) ☆SUPREMES-Motown-1060	82	—	<b>72 HOW DO YOU DO IT</b> (Just—BMI) ☆GERRY & PACEMAKERS-Laurie-3261	—	—
<b>5 THE GIRL FROM IPANEMA</b> (Duchess—BMI) ☆GETZ & GILBERTO-Verve-10322	7	10	<b>39 TELL ME WHY</b> (Signet—BMI) ☆BOBBY VINTON-Epic-9687	27	14	<b>73 ANYONE WHO KNOWS WHAT LOVE IS</b> (Metric—BMI) ☆IRMA THOMAS-Imperial-166041	76	83
<b>6 MY BOY LLOIPOP</b> (Nom—BMI) ☆MILLIE SMALL-Smash-1893	4	4	<b>40 TENNESSEE WALTZ</b> (Acuff, Rose—BMI) ☆SAM COOKE-RCA-8368	38	40	<b>74 EVERYBODY NEEDS SOMEBODY TO LOVE</b> (Keetch, Caesar & Dino—BMI) ☆SOLOMON BURKE-Atlantic-2241	—	—
<b>7 THE LITTLE OLD LADY (FROM PASADENA)</b> (Trousdale—BMI) ☆JAN & DEAN-Liberty-55704	15	28	<b>41 (YOU DON'T KNOW) HOW GLAD I AM</b> (Roosevelt—BMI) ☆NANCY WILSON-Capitol-5198	59	66	<b>75 SHE'S THE ONE</b> (Liphilben-Chartbuster—BMI) ☆CHARTBUSTER-Mutual-502	88	96
<b>8 DANG ME</b> (Tree—BMI) ☆ROGER MILLER-Smash-1881	11	19	<b>42 I LIKE IT LIKE THAT</b> (Jobete—BMI) ☆MIRACLES-Tamla-54098	55	71	<b>76 OH! BABY (WE GOT A GOOD THING GOIN')</b> (Nujac—BMI) ☆BARBARA LYNN-Jamie-1277	76	83
<b>9 A HARD DAY'S NIGHT</b> (Unart, Maclen—BMI) ☆BEATLES-Capitol-5222	56	—	<b>43 LAZY ELSIE MOLLY</b> (Evanston, Picturetone—BMI) ☆CHUBBY CHECKER-Parkway-920	40	39	<b>77 WORRY</b> (Ridge—BMI) ☆JOHNNY TILLOTSON-MGM-13255	—	—
<b>10 WISHIN' AND HOPIN'</b> (Jonathan—ASCAP) ☆DUSTY SPRINGFIELD-Philips-40207	18	29	<b>44 DON'T WORRY BABY</b> (Sea Of Tunes—BMI) ☆BEACH BOYS-Capitol-5174	42	37	<b>78 I'M INTO SOMETHING GOOD</b> (Screen Gems, Columbia—BMI) ☆EARL JEAN-Colpix-729	83	99
<b>11 DON'T LET THE SUN CATCH YOU CRYING</b> (Pacemaker—BMI) ☆GERRY & PACEMAKERS-Laurie-3251	8	6	<b>45 ALONE WITH YOU</b> (Metric—BMI) ☆BRENDA LEE-Decca-31628	36	27	<b>79 A TEAR FELL</b> (Progressive—BMI) ☆RAY CHARLES-ABC Paramount-10571	—	—
<b>12 KEEP ON PUSHING</b> (Curton—BMI) ☆IMPRESSIONS-ABC-10554	17	23	<b>46 SOMETHING YOU GOT</b> (Tunetell—BMI) ☆ALVIN ROBINSON-Tiger-104	53	54	<b>80 SAILOR BOY</b> (Screen Gems, Columbia—BMI) ☆CHIFFONS-Laurie-3262	96	—
<b>13 DON'T THROW YOUR LOVE AWAY</b> (Wyncote—ASCAP) ☆SEARCHERS-Kapp-593	14	17	<b>47 GIVING UP</b> (Trio—BMI) ☆GLADYS KNIGHT & PIPS-Maxx-326	46	49	<b>81 AIN'T SHE SWEET</b> (Advance—ASCAP) ☆BEATLES-Atco-6308	—	—
<b>14 NOBODY I KNOW</b> (Maclen—BMI) ☆PETER & GORDON-Capitol-5211	23	41	<b>48 HANDY MAN</b> (Travis—BMI) ☆DEL SHANNON-Amy-905	75	88	<b>82 I WANT TO HOLD YOUR HAND</b> (Duchess—BMI) ☆ARTHUR FIELDER & BOSTON POPS-RCA-8387	80	86
<b>15 A WORLD WITHOUT LOVE</b> (Maclen—BMI) ☆PETER & GORDON-Capitol-5175	6	5	<b>49 YOU'RE MY WORLD</b> (Hill & Range—BMI) ☆CILLA BLACK-Capitol-5196	57	64	<b>83 LIKE COLUMBUS DID</b> (Myto—BMI) ☆REFLECTIONS-Golden World-12	84	—
<b>16 UNDER THE BOARDWALK</b> (T.M.—BMI) ☆DRIFTERS-Atlantic-2237	31	51	<b>50 SUGAR LIPS</b> (Tree—BMI) ☆AL HIRT-RCA-8391	74	—	<b>84 IT AIN'T NO USE</b> (Curton, Jalyne—BMI) ☆MAJOR LANCE-Okeh-7197	87	92
<b>17 GOOD TIMES</b> (Kags—BMI) ☆SAM COOKE-RCA-8368	16	20	<b>51 DO I LOVE YOU?</b> (Mother Bertha, Hill & Range —BMI) ☆RONETTES-Philles-121	58	69	<b>85 IF I'M A FOOL FOR LOVING YOU</b> (Drury Lane, Beckie—BMI) ☆BOBBY WOOD-Jay-285	91	93
<b>18 EVERYBODY LOVES SOMEBODY</b> (Sands—ASCAP) ☆DEAN MARTIN-Reprise-0281	48	70	<b>52 PEG O' MY HEART</b> (Leo Feist—ASCAP) ☆ROBERT MAXWELL-Decca-25637	51	55	<b>86 LITTLE LATIN LUPE LU</b> (Robert Maxwell, Conrad—BMI) ☆KINGSMEN-Wand-157	—	—
<b>19 CHAPEL OF LOVE</b> (Trio—BMI) ☆DIXIE CUPS-Red Bird-10-001	9	7	<b>53 I BELIEVE</b> (Cromwell—ASCAP) ☆BACHELORS-London-9672	63	73	<b>87 IT'S A SIN TO TELL A LIE</b> (Bergman, Vocco & Conn) ☆TONY BENNETT-Columbia-43073	—	—
<b>20 TRY IT BABY</b> (Jobete—BMI) ☆MARVIN GAYE-Tamla-54094	20	24	<b>54 MIXED-UP, SHOOK-UP GIRL</b> (Merioda—BMI) ☆PATTY & EMBLEMS-Herald-590	70	80	<b>88 LOVE IS ALL WE NEED</b> (Trovis—BMI) ☆VIC DANA-Dolton-95	90	97
<b>21 BAD TO ME</b> (Metric—BMI) ☆BILLY J. KRAMER & DAKOTAS-Imperial-66027	10	12	<b>55 I STILL GET JEALOUS</b> (E. H. Morris—ASCAP) ☆LOUIS ARMSTRONG-Kapp-597	33	36	<b>89 I SHOULD HAVE KNOWN BETTER</b> (Unart, Maclen—BMI) ☆BEATLES-Capitol-5222	—	—
<b>22 PEOPLE</b> (Chappell—ASCAP) ☆BARBRA STREISAND-Columbia-42965	12	11	<b>56 TELL ME</b> (Southern—ASCAP) ☆ROLLING STONES-London-9682	69	85	<b>90 ALL GROWN UP</b> (Mother Bertha, Trio—BMI) ☆CRYSTALS-Philles-122	98	—
<b>23 I WANNA LOVE HIM SO BAD</b> (Trio—BMI) ☆JELLY BEANS-Red Bird-10-003	30	43	<b>57 JUST BE TRUE</b> (Curton-Conrad—BMI) ☆GENE CHANDLER-Constellation-130	68	78	<b>91 WHAT'S HAPPENING TO ME</b> (Screen Gems, Columbia—BMI) ☆DALE & GRACE-Montel-930	—	—
<b>24 NO PARTICULAR PLACE TO GO</b> (Arc—BMI) ☆CHUCK BERRY-Chess-1898	13	9	<b>58 WHAT HAVE I GOT OF MY OWN</b> (Sawtell & Herring—ASCAP) ☆TRINI LOPEZ-Reprise-0276	60	68	<b>92 LOOKING FOR LOVE</b> (Merna—BMI) ☆CONNIE FRANCIS-MGM-13256	—	—
<b>25 FARMER JOHN</b> (Venice—BMI) ☆PREMIERS-Warner Bros.-5443	32	46	<b>59 NOT FADE AWAY</b> (Nor Va Jak—BMI) ☆ROLLING STONES-London-9657	47	44	<b>93 IT'S A COTTON CANDY WORLD</b> (Leo Feist—ASCAP) ☆JERRY WALLACE-Mercury-72292	—	—
<b>26 ALONE</b> (Selma—BMI) ☆FOUR SEASONS-Veejay-597	24	31	<b>60 AL DI LA</b> (M. Witmark & Sons—ASCAP) ☆RAY CHARLES SINGERS-Command-4049	72	—	<b>94 HAUNTED HOUSE</b> (Venice B Flat—BMI) ☆GENE SIMMONS-Hi-2076	97	100
<b>27 LITTLE CHILDREN</b> (Rumbalero—BMI) ☆BILLY J. KRAMER & DAKOTAS-Imperial-66207	19	18	<b>61 ANGELITO</b> (Gil-Epps—BMI) ☆RENE & RENE-Columbia-43054	66	79	<b>95 HEY GIRL, DON'T BOTHER ME</b> (Low-Twi—BMI) ☆TAMS-ABC Paramount-10573	—	—
<b>28 LOVE ME WITH ALL YOUR HEART</b> (Peer Int'l—BMI) ☆RAY CHARLES SINGERS-Command-4046	21	13	<b>62 SHARE YOUR LOVE WITH ME</b> (Don—BMI) ☆BOBBY BLAND-Duke-377	62	65	<b>96 BABY COME HOME</b> (Rosewood-Day, Bob Hilliard —ASCAP) ☆RUBY & ROMANTICS-Kapp-601	99	—
<b>29 WALK ON BY</b> (Blue Seas, Jac—BMI) ☆DIONNE WARWICK-Sceptor-1274	22	16	<b>63 WALK DON'T RUN '64</b> (Forshay—BMI) ☆VENTURES-Dolton-96	—	—	<b>97 SUNNY</b> (Screen Gems, Columbia—BMI) ☆NEIL SEDAKA-RCA Victor-8382	—	—
<b>30 STEAL AWAY</b> (Fame—BMI) ☆JIMMY HUGHES-Fame-6401	39	50	<b>64 THE WORLD I USED TO KNOW</b> (In—ASCAP) ☆JIMMIE RODGERS-Dot-16595	61	63	<b>98 A TASTE OF HONEY</b> (Songfest—ASCAP) ☆TONY BENNETT-Columbia-43073	—	—
<b>31 YESTERDAY'S GONE</b> (Unart—BMI) ☆CHAD & JEREMY-World Artists-1021 ☆OVERLANDERS-Hickory-1258	28	30	<b>65 MY GUY</b> (Jobete—BMI) ☆MARY WELLS-Motown-1056	44	21	<b>99 IN THE MISTY MOONLIGHT</b> (4 Star Sales—BMI) ☆JERRY WALLACE-Challenge-59246	—	—
<b>32 HEY HARMONICA MAN</b> (Jobete, Little Darlin'—BMI) ☆STEVIE WONDER-Tamla-54096	37	40	<b>66 YOU'RE MY REMEDY</b> (Jobete—BMI) ☆MARVELETTES-Tamla-54097	65	75	<b>100 IT'S ALL OVER NOW</b> (Kags—BMI) ☆VALENTINOS-Sar-152	92	94
<b>33 LOVE ME DO</b> (Beechwood—BMI) ☆BEATLES-Tollie-9008	26	15	<b>67 BEG ME</b> (T. M.—BMI) ☆CHUCK JACKSON-Wand-154	50	53			
<b>34 HELLO DOLLY</b> (E. H. Morris—ASCAP) ☆LOUIS ARMSTRONG-Kapp-573	29	22	<b>68 KICK THAT LITTLE FOOT, SALLY ANN</b> (Screen Gems, Columbia—BMI) ☆ROUND ROBIN-Domain-1404	71	74			

★ SHARP UPWARD MOVE  
★ BEST SELLING RECORDS  
★ OTHER VERSIONS STRONGLY REPORTED  
ALPHABETIZED, TOP 100 IN EACH ISSUE

# THE ROLLING STONES

Hit!

JUST RELEASED

## IT'S ALL OVER NOW

#9687



Attractive 45 sleeve

Hit!



#LL 3375

LP includes "Not Fade Away" and "Tell Me"

Hit!

## TELL ME

#9682

Attractive 45 sleeve



*LONDON*  
REGD. TRADE MARK  
RECORDS

Hit!

Lulu and the Luvvers

## SHOUT

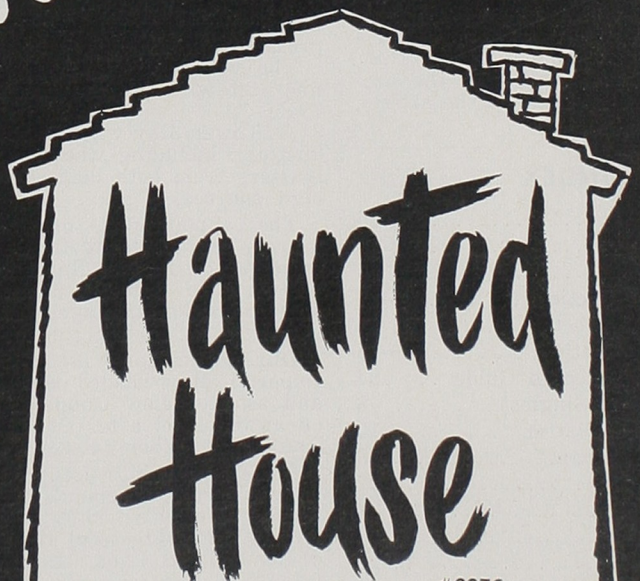
#9678



PARROT

THE AMERICAN LONDON GROUP

Hit! Gene Simmons



#2076



THE AMERICAN LONDON GROUP

## Capitol Int'l Names Bill Mikels VP & Director; Jack Brandvein Merch. Mgr.; Other Posts Filled

HOLLYWOOD—Capitol Records' international dept. has made a number of major exec appointments, including the election of Bill Mikels as vp and promotion to director of the label's international department.

In other appointments and promotions, Jack H. Brandvein has joined the int'l dept. as merchandising manager; Brad Engel has been promoted assistant merchandising manager of Capitol's Angel, Promenade and Capitol of the World product lines; Bob Reid has been appointed import A&R manager; Jerome Prager, Jr. has been appointed import sales manager; and Art Duncan has been appointed administrative director of the int'l division.

Mikels, formerly int'l marketing manager of the int'l dept., will be in charge of Capitol's export, import and foreign licensing operations. He replaces Gordon R. Fraser, recently named to head-up the label's upcoming

ing subsid, Tower. He started with Capitol Records Distributing Corp. as a salesman in July, 1950, and was promoted to St. Louis branch sales head in 1953. In Jan., 1957, he was named district sales manager of CRDC, and in July, 1960 was named national merchandising manager. He was next appointed album product sales manager, and became int'l manager in Jan., 1963.

In his post, Jack Brandvein will be responsible for advertising and merchandising of Angel, Capitol of the World and Promenade product. His previous association was with Charles Schlaifer & Co., large ad agency, where for the past year he headed the west coast office, working on such accounts as 20th Century Fox, Columbia Pictures, Decca Records and Revue Studios.

Brad Engel, as assistant mer- (Continued on page 35)

## Decca Sales Meets To Showcase Fall LP's, Plans

NEW YORK—Decca distrib branches get a chance to inspect the label's new product and plans this week in a series of annual sales meets.

Kick-off meet, covering the western division, is set for the Beverly Hilton Hotel in Los Angeles on Monday (13), to be followed on Wed. (15) at the Edgewater Beach Hotel in Chicago for the southwestern, midwestern and north central divisions. Final gathering is Fri. (17) at the Cherry Hill Inn in Cherry Hill, N.J. for southern and eastern divisions.

Decca brass on hand at each meet will include Syd Goldberg, vp and general sales manager of Decca Distributing Corp., Claude Brennan, national sales manager, and Lou Sebok, assistant general sales manager.

## Vee-Jay Expands Roster, Buys Host of Masters

NEW YORK—Ever active, Vee Jay Records has made a number of artist and master deals.

Randy Wood, label topper, has announced the pacting of jazz pianist Victor Feldman, formerly on the Ava label, folk-singer Hoyt Axton and songstress Georgia Carr. Feldman will debut on the label via a late Sept. album release, part of the label's big fall LP schedule. Axton's first release, "L.A. Town," is due next week.

In the master purchase area, the label has made a deal for another master from the Fame label, which sold Vee Jay a current chart rider, Jimmy Hughes' "Steal Away." New deck is Dan Penn's "Close to Me" and "Let Them Talk."

Other master deals include: for the label's Tollie subsid, "Somethings Got a Hold of Me" by Don and Al-leyne Cole and "Darla" by Rick and the Kens, originally on the LeCam label.

Vee Jay is also distributing on its original label, Nola Records, Smoke Johnson's "It Ain't My Fault."

For its expanding roster, the diskery is launching a three-fold plan to build up the sales and fan interest (Continued on page 35)

## Liberty Execs Hit Road To Tell Fall Product Story

HOLLYWOOD—Liberty Records is telling its fall sales program story plus those for the Dolton and Imperial labels via a road show featuring its top execs.

Starting July 28, label toppers, armed with a stereo slide presentation and special merchandisers will visit each distrib in his home territory.

The label says its fall product is its most ambitious to date and is intent on letting all distrib sales people learn of the new albums.

Set to make the trek are: Al Bennett, president; Phil Skaff, exec vp; Harold Linick, vp; Don Bohanan, marketing director; Lee Mendell, LP sales director; and Bob Fead, singles sales head.

The execs will be joined by divisional salesmen Dick Bowman and Rick Frio. Making the trek for Imperial is the label's sales manager, Ken Revercomb, who will hold a series of confabs with distrib who carry the line.

## Columbia Distributing Re-Aligns Execs

NEW YORK—Columbia Record Distributors has announced a number of key exec appointments, according to Jack Loetz, vice president and general manager for Columbia Record Distributors.

Warner Pagliara has been appointed director of administration and will be responsible to Loetz for the administrative direction of CRD and the implementation of administrative policies and procedures for all CRD's branch locations. Prior to his new position, Pagliara was regional manager in mid and south-

eastern region.

Joe Lyons, director of sales for CRD, has announced a number of additional major appointments: Paul Smith as manager of phono sales; Louis Koppel as manager of special markets; John Craig as regional manager in the Mid and Southeastern region; Joseph Rieland as regional manager of the South Central region; Harold Komisar as district manager of Southeastern district; Robert Van Metre as manager of the St. Louis branch, and Norman Ziegler as manager of the Chicago branch.

Paul Smith, as manager of phono sales, reports to Lyons, and will supervise all phono sales and promo activities of CRD's field sales organization. Previously, Smith was branch manager in Chicago.

Louis Koppel, as manager of special markets, will also report to Lyons. Located in Chicago, his duties will include the maintenance of liai- (Continued on page 34)

## Vee Jay Creates Label For Foreign Masters

HOLLYWOOD—Vee Jay Records, already releasing singles and albums on two subsid as well as the parent label, has created a third new subsid, Interphon, specifically to release foreign masters domestically.

Interphon, according to Jay Lasker, exec vp of the diskery, will offer an immediate release package of three singles from Pye label in England and one each from Germany's Metro- nome and Australia's Festival labels.

Initial Interphon sides are "She's Mine" by the Chants, "Willyer Won't yer" by the Hi-Fi's and "Just Want to Make Love to You" by the Soul Agents all from Pye; the German-English "Be My Baby" by Suzanne Doucet, and the Australian "Make the World Go Away" by April Bryon.

Lasker said Interphon will have separate administrative, sales and distrib staffs. Company also plans to separate the Tollie subsid from Vee-Jay in the same manner, and will shortly announce new exec appointments for both labels.

Vee-Jay, as part of its lease arrangements with foreign companies to release their product in the U.S., also holds first option with the artists for follow-up disks on the artists, Lasker said.

## Monument At MOA

NEW YORK—Monument Records is the latest addition to the label exhibitors at the Music Operators of America (MOA) meet in Chicago this Oct. Diskery joins Columbia, RCA Victor, Capitol, Decca and Jay Jay, the polka diskery.

## Tower Label Names Eddie Ray A&R Head

HOLLYWOOD—Tower Records, Capitol's new subsid label, has named Eddie Ray to the post of A&R producer, according to Gordon Frazer, president of the diskery.

The vet A&R producer previously had been with Imperial Records since 1955.

At Tower, Ray will direct disk production, including the purchase of masters from both domestic and foreign sources.

The appointment of Ray gives Tower, set to debut in Sept., four major execs. Besides Ray and Frazer, there's Vito Samela, national sales and promotion manager, and Perry Mayer, merchandising manager.

During his long association with Imperial, Ray headed national sales and assisted Lew Chudd. He stayed on at the label after Chudd sold the operation to Liberty Records last year.

Some of the hits produced by Ray include Ernie Freeman's "Raunchy," Sandy Nelson's "Let There Be Drums," five successful albums by the drummer, and Irma Thomas' recent hit, "Wish Someone Would Care."

Ray has been in the disk business since the 1940's, having served with the old Aladdin label and Central Record Sales, once the largest indie distrib in the U.S.

## Screen Gems-Col. Sues Adler For \$2,250,000

HOLLYWOOD—A \$2,250,000 damage suit has been filed in the U.S. District Court of Los Angeles by Screen Gems and Screen Gems-Columbia Music against 13 defendants, including Lou Adler, former vp of Screen Gems-Columbia, Jan (Berry) and Dean (Torrance), the star duo on the Liberty label also named in the suit.

A complaint charges breach of contract, infringement of common law copyright, violation of fiduciary duties, unfair competition and conspiracy.

The action asks for an injunction and accounting and charges that Adler, while in charge of west coast operations for the plaintiff, acquired for himself rights and musical compositions and negotiated Pierre Cossette and Bobby Roberts, also named (Continued on page 36)

## RCA Profits Reach High In 1st Half, 2nd Qtr.

NEW YORK—The Radio Corporation of America registered record profits for second quarter and the first half of 1964.

Revenues that did the trick came from consumer products, network broadcasting, electronic devices and an increase in orders for electronic data processing systems, according to a report from David Sarnoff, chairman of the board, and Elmer W. Engstrom, president.

The execs reported further that record sales were reached in home entertainment products, including phonos. No figures are available on earnings of RCA Victor Records.

Net income for the first half of the year came to \$37.6 million, or 69¢ a share, up 28% from the previous year's \$29.4 million, or 53¢ a share. Sales in the six months were a record-breaking \$899.1 million, up 2% from 1963's \$877.3 million.

Net income in the second quarter went up 32% to \$16 million, or 29¢ a share, from \$12.1 million during the same period last year.

Sales, however, for the second period dropped to \$437.7 million from \$441.3 million a year before.

Sarnoff and Engstrom predicted that the company would show record profits for the whole of 1964.

## Riverside Label In Financial Straits

NEW YORK—Facing financial difficulty, Riverside Records has closed its offices for the time being, Cash Box has learned. Although the label has not filed a petition for bankruptcy, it's understood that creditors, including a factor, are calling for a settlement.

Riverside, with an extensive jazz-inclined catalog, was formed in 1962 by the late Bill Grauer. Following Grauer's death last Dec., the operation of the company was taken over by Orrin Keepnews.

## Philips Rushes 6 LP's; Discount Deal Offered

CHICAGO—Philips Records is rushing six albums to market under a special discount plan.

Plan offers a 10% discount on the new albums, as well as catalog products, and includes a merchandising and promo push.

The new packages include: "Rag Doll" by The Four Seasons, named after their smash single (LP also includes their recent hit, "Ronnie"); two Lester Lanin albums, "Dancing at the Discotheque" and "Lester Lanin Plays for Dancing," the society maestro's first two dates for the label; "The World of a Country Boy" by Johnny Sea; "Michel Legrand

Sings"; and "The Double Six of Paris Sing Ray Charles."

Merchandising aids made available are two insert-into-album die-cut cards to be issued together with die-cut jackets. One, in support of both Lanin LP's, is a 15" illustration of a dancing couple with the message, "If You Want to Dance, You'll Want Lester Lanin." The second insert intended for the Four Seasons' "Rag Doll" is a 15" card with line drawings of a rag doll in die-cut form. The doll peers over a child's blackboard with appropriate sell copy chalked in. Promo and publicity programs emphasize a heavy artist push tailored to the product in the release.

### INDEX

Album Plans	26
Album Reviews	32, 33
Bois for DJ's	25
Coin Machine Section	46-60
Country Music Section	37, 38
International Section	39-45
Juke Box Ops Record Guide	24
Looking Ahead (Singles)	8
Platter Spinner Patter	10
Radio Active Chart	18
R & B Top 50	22
Record Ramblings	21, 22
Single Reviews	12, 14, 16
Sure Shots	28
Top 100 Albums (Mono)	31
Top 50 Albums (Stereo)	31
Top 100 labels	28
Top 100 Singles (Alphabetized)	26
Vending News	52

**Command Salutes**

**The Beatles**

**AND THEIR SMASH HIT SONG**

**A HARD**

**DAY'S NIGHT**

**NOW HEAR**

**THE FANTASTIC**

**INSTRUMENTAL VERSION**

**By ENOCH LIGHT & His Orchestra**

**A HARD DAY'S NIGHT**

**B/w**

**CARRIBE**

**NO.4050**

**ORDER IMMEDIATELY FROM YOUR COMMAND DISTRIBUTOR**

**Command**® RECORDS  
WORLD LEADER IN RECORDED SOUND  
a subsidiary of ABC-PARAMOUNT RECORDS INC  
1501 BROADWAY, NEW YORK 36, N. Y.

IN CANADA:  
DISTRIBUTED BY  
"SPARTON OF CANADA"



# LOOKING AHEAD

A compilation, in order of strength, of up and coming records showing signs of breaking into The Cash Box Top 100. List is compiled from retail outlets.

- 1 **NO ONE TO CRY TO**  
(Hill & Range—BMI)  
Ray Charles (ABC Paramount 10571)
- 2 **IF YOU SEE MY LOVE**  
(Four Star—BMI)  
Lenny Welch (Cadence 1446)
- 3 **BACHELOR BOY**  
(Jungnickel & Harms—ASCAP)  
Cliff Richard & Shadows (Epic 9691)
- 4 **SOLE SOLE SOLE**  
(MRC—BMI)  
Siv Malmkvist & Umberto Marcato  
(Jubilee 5479)
- 5 **A SHOT IN THE DARK**  
(Twin Chris—ASCAP)  
Henry Mancini (RCA Victor 8381)
- 6 **IT'S SUMMERTIME U.S.A.**  
(Merjoda—BMI)  
Pixies Three (Mercury 72288)
- 7 **INVISIBLE TEARS**  
(Central—BMI)  
Ray Conniff (Columbia 43061)
- 8 **I'M SORRY**  
(Champion—BMI)  
Pete Drake (Smash 1910)
- 9 **GOOFUS**  
(Leo Feist—ASCAP)  
Bent Fabric (Atco 6304)
- 10 **WHAT CAN A MAN DO**  
(T.M.—BMI)  
Ben E. King (Atco 1303)
- 11 **LOOKIN' FOR BOYS**  
(Grand Canyon—BMI)  
Pin-Ups (Stork T)
- 12 **THE NEW "FRANKIE & JOHNNY" SONG**  
(Hollis—BMI)  
Greenwood Singers (Kapp 591)
- 13 **IT WILL STAND**  
(Travis—BMI)  
Showmen (Imperial 66033)
- 14 **SHE'S MY GIRL**  
(Spectorious—BMI)  
Bobby Shafto (Rust 5082)
- 15 **SAY YOU**  
(T.M.—BMI)  
Ronnie Dove (Diamond 167)
- 16 **A QUIET PLACE**  
(Rittenhouse—BMI)  
Garnet Mimms & Enchanters  
(United Artists 715)
- 17 **A THING CALLED SADNESS**  
(Pomper—BMI)  
Chuck Howard (Fraternity)
- 18 **I STAND ACCUSED**  
(Curton—BMI)  
Jerry Butler (VeeJay 598)
- 19 **OH, ROCK MY SOUL**  
(Pepamar—ASCAP)  
Peter, Paul & Mary (Warner Bros. 5442)
- 20 **PART OF ME**  
(Shirleys & Roted—BMI)  
Johnny Adams (Watch 6333)
- 21 **ME**  
(Acclaim & Somos Island—BMI)  
Bill Anderson (Decca 31630)
- 22 **WATER SKIING**  
(Linduane-Eddy—BMI)  
Duane Eddy (RCA Victor 8376)
- 23 **NIGHTINGALE MELODY**  
(Cicero/Voycon—BMI)  
Little Johnny Taylor (Galaxy 731)
- 24 **THE THINGS I USED TO DO**  
(Venice—BMI)  
James Brown (Smash 1908)
- 25 **SECURITY**  
(East-Time—BMI)  
Otis Redding (Volt 117)
- 26 **ONLY YOU**  
(Wildwood—BMI)  
Wayne Newton (Capitol 5203)
- 27 **NEW ORLEANS**  
(Rock Masters—BMI)  
Bern Elliot & Fenmen (London 9670)
- 28 **FATHER SEBASTIAN**  
(4 Star Sales—BMI)  
Ramblers (Almont 311)
- 29 **CLOSE YOUR EYES**  
(Miller—ASCAP)  
Jamie Coe & Gigalos (Enterprise 5005)
- 30 **MY HEART SKIPS A BEAT**  
(Bluebook—BMI)  
Buck Owens (Capitol 5136)
- 31 **HELP THE POOR**  
(Noma—BMI)  
B. B. King (ABC Paramount 10552)
- 32 **JOHNNY LOVES ME**  
(Seven Brothers—BMI)  
Florraine Darlin (Ric 105)
- 33 **G.T.O.**  
(Buck Horn—BMI)  
Ronnie & Daytonas (Mala 481)
- 34 **CLOSE YOUR EYES**  
(Miller—ASCAP)  
Arthur Prysock (Old Town 1163)
- 35 **SHOUT**  
(Wemar, Nom—BMI)  
Lulu & Luvers (Parrott 9678)
- 36 **MORE**  
(E. B. Marks—BMI)  
Danny Williams (United Artists 601)
- 37 **TASTE OF TEARS**  
(Prize, Elm Drive—ASCAP)  
Johnny Mathis (Mercury 72287)
- 38 **ANNIE'S BACK**  
(Little Richard, Kags—BMI)  
Little Richard (Specialty 692)
- 39 **I'LL KEEP TRYING**  
(Kags—BMI)  
Theola Kilgore (KT 501)
- 40 **A CASUAL KISS**  
(Lode—BMI)  
Leon Peels (Whirlybird 2002)
- 41 **SUMMER MEANS FUN**  
(Trousdale—BMI)  
Bruce & Terry (Columbia 43055)
- 42 **DANCE, FRANNY, DANCE**  
(Abnak—BMI)  
Floyd Dakil Combo (Guyden 2111)
- 43 **SILVER DOLLAR**  
(Hampshire House—ASCAP)  
Mike Minor (Dot 16606)
- 44 **ALL MY LOVIN'**  
(Northern—ASCAP)  
Hollyridge Strings (Capitol 5207)
- 45 **SELFISH ONE**  
(Chevis—BMI)  
Jackie Ross (Chess 1903)
- 46 **MICKEY MOUSE**  
(Wonderland—BMI)  
Danny Proviso (20th Fox 506)
- 47 **THE JAMES BOND THEME**  
(Unart—BMI)  
Billy Strange (Crescendo 2320)
- 48 **LICORICE STICK**  
(Two-Beat—BMI)  
Pete Fountain (Coral 62413)
- 49 **THANK YOU BABY**  
(The Girls—BMI)  
Shirelles (Scepter 1278)
- 50 **THE LONG SHIPS**  
(Screen Gems, Columbia—BMI)  
Charles Albertine (Colpix 726)



**SUMMERTIME SMASH!**

## DALE & GRACE

**"DARLING  
IT'S WONDERFUL"  
"WHAT'S HAPPENING  
TO ME"**

**MONTEL #930**



**BEST  
SELLING  
ALBUM  
MLP 100**



**JAMIE/GUYDEN** Dist. Corp.

Phila. 21, Pa.



Movie Theme Hit of the Year!

# BROOK BENTON'S

## "a house is not a home"

72303



as sung  
by Brook  
in the new  
Joseph E.  
Levine  
presentation  
**a house  
is not  
a home**

Starring  
**SHELLEY  
WINTERS**  
as  
Polly Adler

**ROBERT  
TAYLOR**  
as  
**FRANK**

based on  
Polly Adler's  
best-selling  
shocker!



*Foremost  
in fine  
recording*

song  
published  
by  
Diplomat  
Music  
Corp.





# PLATTER SPINNER PATTERN

## COMIN' UP STRONG "COMIN' HOME BABY"

JACK LA FORGE R 309



A HIT ALBUM

AND

## THE G-CLEFFS

ARE BACK WITH A NEW HIT SINGLE

## "I BELIEVE IN ALL I FEEL"

R 1314

**Regina** RECORDS

2742 E. Tremont Ave.  
Bronx, New York

LP, R 309

**BILLBOARD:** Spotlight Pick

**CASHBOX:** Best Bet

**RECORD WORLD:** Pick Hit  
of the Week

(Also available a great single  
from the album "COMIN'  
HOME BABY" R308)

SINGLE, R 1314

**A CASHBOX:** Pick  
**A RECORD WORLD:** Pick Hit  
of the Week

WMCA-New York recently told a white lie the other afternoon—but it was all in fun and resulted in "Good Guy" sweatshirts for five lucky listeners. The station had been announcing the Beatles as the artists heard on the single, "Because." Since it was actually recorded by the Dave Clark Five, spinner Dan Daniel had a chance to see how sharp his audience really is. "Some time during the next half-hour you'll be hearing us fib," he explained. Listeners were asked to call WMCA as soon as they spotted the white lie. Moments later the switchboard was flooded with calls. The first five phoners received the popular gold-and-black "Good Guy" sweatshirts for which WMCA is now famous.

Dick Starr of Professional Programming sends along word that recent interviews with the Beatles, Bobby Wee, the Rolling Stones, Gerry and the Pacemakers and Dave Clark are now available in open-end interview form, to one station in each market. The interviews are supplied on tape at 7½ I. P. S., and each averages 90 seconds in length. The open-end interviews are available, with complete scripts, for \$5 from Professional Programming, 1720 S.W. 93rd Place, Miami, Florida.

WLS-Chicago's news director, Harold Salzman, is one of the ten news directors selected from ABC radio stations to assist the label's news staff in covering the GOP convention at the Cow Palace in San Francisco beginning July 13. Salzman, a veteran radio newsman of 15 years, has been given the specific assignment of reporting on the Illinois delegation for ABC and WLS.

As part of its continued effort to assist the Boston community and the State of Massachusetts in their highway safety program, WCOP-Boston initiated a Mortorists Safety Stop Campaign over the recent Fourth of July weekend. The campaign was designed to provide Independence Day travelers with two "Safety Stops," where coffee and donuts were served from 8PM to 6AM on Friday, July 3 and from 8PM to 2AM on Sunday, July 5. The "Safety Stops" were located at the Ponkapoag Trail Exit off Route 128 in Canton and trailer park at the Weston end of the Massachusetts Turnpike. WCOP broadcast live from the Weston location on both Friday and Sunday evenings.

A group of talented high school and college age "hooters," who have performed on WHNB-TV-Hartford's "Summer Hootenanny Roundup" have been invited by the Governor's World's Fair Advisory Committee to appear on a special show on the Plaza of the U.S. Pavilion as part of a week-long observance honoring Connecticut. Don Blair, popular WHNB-TV personality is host-emcee for the program and will travel with the group to the Fair.

WINS-New York's popular jockey Stan Z. Burns will now do the night owl circuit. His new schedule at the station will be from 1 AM to 6 PM.

A lucky steel town high school grad recently received a \$1,000 Edison scholarship from KDKA-Pittsburgh. The award was made possible by a grant from the Edison Foundation which each year cites a radio station for its "outstanding service to youth." The outlet received the Mass Media for its program activities during 1963

and the opportunity to present the scholarship to a Tri-State high school graduate.

WFLA-Tampa-St. Petersburg personality Pat Downey and station news director Marty Giles have invaded TV. They are both the stars of a new program on WFLA-TV tabbed "Today And Tonight." The show is seen Monday-Thursday from 5:30-6:30 PM.



LARRY FISCHER  
WLOL-Minneapolis

Marty gives a quick news summary and Pat interviews many interesting guests. The program also features a live band and a "Weather Chick" who gives the weather summary. The whole concept of the show was Pat's—a main point in his thinking was that the show should be live. The show is doing very well in the market and Pat is really hopping. He does a daily four radio show in addition to his TV program.

For the third consecutive year KHJ-TV-Hollywood will present its highly-lauded telecast of an evening at the Hollywood Bowl. Selected for presentation this year is "An Evening Of Opera," which will be shown on August 19, with Mary Costa and Jan Peerce starring. The orchestra is led by Maurice Abravanel. The over-all program will run two hours, from 8:00 to 10:00 PM. The entire show is being video-taped from the concert performed August 6. Special features relating to the Bowl will be added to the musical and operatic portions of the program.

KALI-San Gabriel recently became the first station in the annals of FCC history to be liable to fine for "failure to originate a majority of its programs locally." The FCC, in notifying the outlet of a possible \$4,000 fine, said KALI used studio in Los Angeles to broadcast "majority" of programs. FCC inspectors said they found that the station's main studio in San Gabriel was unused room in civic auditorium. KALI has 30 days to either pay or contest the fine.

In a special edition of Bob Maxwell's WABC-New York "Sounding Board" program, the outlet saluted R. Peter Strauss, president of the competing WMCA and the Strauss Broadcasting Group. Strauss, who led a successful fight for reapportionment within the state legislature, appeared on the show to explain the events leading up to the significant Supreme Court decision concerning legislative reapportionment, and received the praise of WABC for his stand on the subject and on broadcast editorials.

### VITAL STATISTICS:

Fred Swanson given the green light as program director of WHAY-New Britain . . . Jack R. Rader, formerly with WOHO-Toledo, joins the personality staff and production staff of KSTT-Davenport . . . Larry Fischer given the nod as program director of WLOL-Minneapolis . . . Hal Levin named vee and general manager of WINZ-Miami.

**ABC-PANCAKES**



**EXTRA PREMIUM**

AVAILABLE  
JULY 15

**2**

**BRAND NEW  
LP's FOR  
DYNAMIC  
ALBUM  
SALES**



RAY CHARLES  
Have A Smile With Me  
ABC-495 / ABCS-495

THE IMPRESSIONS  
Keep On Pushing  
ABC-493 / ABCS-493

# ABC-PARAMOUNT

*serves up*  
*Six Sizzling Singles*  
*for Sensational*  
*Summer*  
*Sales*



**THE IMPRESSIONS**

*Keep On Pushing*

*c/w I Love You (Yeah)*

ABC-10554

**THE TAMS**

*Hey Girl, Don't Bother Me*

*c/w Take Away*

ABC-10573

**RAY CHARLES**

*No One To Cry To*

*c/w A Tear Fell*

ABC-10571

**FATS DOMINO**

*Mary, Oh Mary*

*c/w Packin' Up*

ABC-10567

**LULA REED**

*Baby, Baby (Your Love)*

*c/w Call Me Darlin'*

TANGERINE-943

**THE V.I.P.'s**

*Flashback*

*c/w You Pulled A Fast One*

BIG TOP-518



DISTRIBUTED IN CANADA BY SPARTON OF CANADA, LTD.



# RECORD REVIEWS

• best bet B+ very good B good C+ fair C mediocre

only those records best suited for commercial use are reviewed by Cash Box

## Pick of the Week

I'LL CRY INSTEAD (2:05) [Unart, Maclen BMI—Lennon, McCartney]  
I'M HAPPY JUST TO DANCE WITH YOU (1:49)  
[Unart, Maclen BMI—Lennon, McCartney]  
THE BEATLES (Capitol 5234)

Here's two more sides from the soundtrack of the Beatles' initial pic effort, "A Hard Day's Night," and once again it's money-in-the-bank for all concerned. One half's a driving rocker, labeled "I'll Cry Instead," while the other's a stomp-a-rhythmic delight, tagged "I'm Happy Just To Dance With You." Two-sided sales dynamite from the boys.

SUCH A NIGHT (2:57) [Raleigh BMI—Chase]  
NEVER ENDING (1:58) [Gladys ASCAP—Kaye, Springer]  
ELVIS PRESLEY (RCA Victor 8400)

This new Presley single's billed as a summer vacation special and it's an oldie, "Such A Night"—culled by popular demand from an early LP. It's a real appealing rock-a-rhythmic revival that again features a top flight Jordanaires backing. Coupler's an enchanting cha cha beat newcomer tagged "Never Ending" that could make this another giant two-sider for EP.

MAYBE I KNOW (2:40) [Trio-BMI—Greenwich, Barry]  
WONDER BOY (2:15) [Earth-BMI—Wyche, Steward]  
LESLEY GORE (Mercury 72309)

Lesley Gore comes up with a summer sales sizzler to add to her unbroken chain of disk successes with this tuneful teen-angled vocal romp tagged, "Maybe I Know." It's a handclappin' thumper geared for easy dancing and listening approval. The pulsating item on the reverse, "Wonder Boy," is a romantic sparkler that sports an effective "Heat Wave"-like backdrop. This end could get plenty of attention too!

I'LL KEEP YOU SATISFIED (2:04)  
[Metric BMI—Lennon, McCartney]  
BILLY J. KRAMER (Imperial 66048)

Billy J. Kramer, who (along with the Dakotas) is still riding high with his double-barreled sensation from England, "Little Children" and "Bad To Me," comes up with two more items that should soon keep 'em company. One end's a tantalizing (Lennon & McCartney-penned) cha cha twist affair, tabbed "I'll Keep You Satisfied." The other's a softer cha cha beat sentimental opus, dubbed "I Know." Two more winners here.

DOWN WHERE THE FOUR WINDS BLOW (Chilly Winds) (2:45)  
[Serendipity BMI—Madden, Sennett, Bowers]  
THE NEW FRANKIE AND JOHNNY SONG (2:28)  
[Hollis BMI—Silverstein, Gibson]  
THE SERENDIPITY SINGERS (Philips 40215)

The fine pop-folk song stylists, who now own a pair of singles giants in "Don't Let The Rain Come Down" and "Beans In My Ears" (in addition to their smash packages), can have a real big singles double-header in these two sides-culled from their current LP chart-riser, "The Many Sides Of The Serendipity Singers."

One's an ear-arresting, hush-voiced lilter, tabbed "Down Where The Four Winds Blow," while the other's an enticing up tempo, handclapper, "The New Frankie And Johnny Song." Superb Bob Bowers arrangements on two sides that'll be filling the airwaves in the weeks to come.

IT'S ALL OVER NOW (3:20) [Kags BMI—B.&S. Womack]  
GOOD TIMES BAD TIMES (2:28) [ASCAP—Jagger, Richard]  
THE ROLLING STONES (London 9687)

London's chart sensations, the shaggy-haired Rolling Stones, who are all over the place with "Not Fade Away" and "Tell Me" (singles-wise) and a sizzling LP bearing their name, are in for more singles honors with this contagious cover of the Valentinos' click, "It's All Over Now." It's an infectious thumper that should head right for chartsville. The bluesy undercut takes a lazy beat-ballad ride.

THE FAR SIDE OF THE HILL (2:28) [Caravelle ASCAP—Ames]  
SILLY OL' SUMMERTIME (2:12)  
[New Christy BMI—Sparks, Turner, Under]  
NEW CHRISTY MINSTRELS (Columbia 43092)

The New Christy Minstrels, who are still pulling coin with their long-lasting chart-rider of "Today," are a cinch to duplicate that success with this new hitsville contender tagged "The Far Side Of The Hill." The tune is a hauntingly beautiful lyrical pop-folk romancer about a guy bitten with wanderlust. The attractive undercut, "Silly Ol' Summertime," is a rousing, uptempo seasonal ditty with a pleasing, rhythmic beat.

ONE PIECE TOPLESS BATHING SUIT (2:25)  
[Trousdale BMI—Altfeld, Sloan, Barri]  
WAH-WAHINI (2:11) [Trousdale BMI—Sloan, Barri]  
THE RIP CHORDS (Columbia 43093)

The fellas, who now have two biggies tucked away under their hit belts in "Hey Little Cobra" and "Three Window Coupe," can have a twin-hit this time out. One end's a timely quick beat delighter dubbed "One Piece Topless Bathing Suit" while the other's a sizzler, tagged "Wah-Wahini"—that's more in the groove of their previous successes. Top notch arranging credits belong to Terry Melcher and Bruce Johnston.

## Pick of the Week

HELLO MUDDUH, HELLO FADDUH! (New 1964 Version) (2:58)  
[Curtain Call ASCAP—Sherman, Busch]  
HELLO MUDDUH, HELLO FADDUH! (Original Version) (2:47)  
[Curtain Call ASCAP—Sherman, Busch]  
ALLAN SHERMAN (Warner Bros. 5449)

Sherman has up-dated his comically-terrifying letter from a kid at Camp Granada to his parents and the same happy chart results can happen this time around. This version of "Hello Mudduh, Hello Fadduh!" was recorded live on a recent Johnny Carson "Tonight" telecast and it's more than likely that you'll roar along with the "Tonight" audience. Coupler's the original version that started it all.

JAMAICA JOE (2:17)  
[Grand Canyon-BMI—Feldman, Goldstein, Gottehrer]  
DREAM BOY (2:28)  
[Grand Canyon-BMI—Feldman, Goldstein, Gottehrer, Spencer]  
THE ANGELS (Smash 1915)

The Angels hop on the "blue beat" bandwagon with "Jamaica Joe" and could easily return to the charts in the "My Boyfriend's Back" manner. It's a spirited and happy sounding ska affair served up in polished Angels fashion. The reverse is a lilting teen romancer that the girls deliver in unison with background chorus. Watch this one closely for early activity—the ska is in vogue and this a first-rate offering.

AND I LOVE HER (2:59) [Maclen & Unart-BMI—Lennon, McCartney]  
RINGO'S THEME (THIS BOY) (2:25)  
[Maclen-BMI—Lennon, McCartney]  
GEORGE MARTIN (United Artists 745)

"And I Love Her" is a haunting melody in the "More" tradition played by George Martin and his ork and penned by Beatles John Lennon and Paul McCartney for their debut film, "A Hard Day's Night." Inventively arranged and orchestrated, this one could be the first big instrumental theme for the rock-oriented group. The pattern continues on the undercut with an easy-listening version of a previously-released vocal tabbed, "This Boy." Loads of loot to be made here.

A HARD DAY'S NIGHT (2:44)  
[Unart, Maclen-BMI—Lennon, McCartney]  
CARRIBE (1:54) [Record Songs-ASCAP—Davies, Light]  
ENOCH LIGHT (Command 4050)

The big orchestra of Enoch Light is heard on the title tune from the Beatles film debut, "A Hard Day's Night." Lush strings and bright brass are rhythmically combined on this pulsating Lennon-McCartney tune. Command has made profitable inroads on the singles market and this issue could add to its winning streak. The undercut's a Latin-flavored opus with lots of appeal. The orkster fronts a 60-piece ork on this session.

NEVER PICK A PRETTY BOY (2:30)  
[Wyncote ASCAP—Jackson, Wisner]  
HE'S NO ORDINARY GUY (2:15)  
[Hill & Range, Shelrose BMI—Gamble, Ross, Renzetti, Richards]  
DEE DEE SHARP (Cameo 329)

This could be the one to send the canary zooming way back up the top ten ladder. It's a happy-go-lucky sounding, ska shuffle blue beat affair, labeled "Never Pick A Pretty Boy," that Dee Dee and her vocal-instrumental support wrap up in delightful style. However, don't overlook the inviting cha cha beat romancer, "He's No Ordinary Guy." It can also step way out.

IF YOU LOVE HIM (2:16) [T. M. Champion BMI—Darin]  
I THINK I'M GONNA CRY (2:58) [Vine Street ASCAP—Cole, Tipton]  
JOANIE SOMMERS (Warner Bros. 5454)

This could be the lark's biggest deck in some time. It's a terrific, Bobby Darin-penned tune, tagged "If You Love Him" (from the soon-due pic, "The Lively Set"), that Joanie races thru with telling multi-track effect. Sensational instrumental arrangement rounds out the winner. Also keep close tabs on the touching, slow beat-ballad dramatic love affair, "I Think I'm Gonna Cry." It, too, is loaded with chart potential.

YOURS (2:25) [E. B. Marks BMI—Roig]  
JOLIE JACQUELINE (2:20) [Hill & Range BMI—Warfield]  
LUCILLE STARR (Almo 209)

Lucille Starr, a big name up Canada way and now on her way in the U.S. as a result of her "French Song" chart-making bow, can really move way out with this new Almo effort. It's the lovely oldie, "Yours," that the lark delivers in charming English and French fashion. Her heartfelt delivery has a flavor of the Vera Lynn and Kay Star styles. Fine Latin beat arrangement by Herb Alpert. Companion piece is an inviting all-French toe-tapper.

LET ME LOVE YOU (2:35) [MMPC BMI—King, Ling]  
YOU'RE GONNA MISS ME (2:32) [Modern BMI—King, Taub]  
B. B. KING (Kent 396)

King, following his solid-selling pop-r&b dual-mart'er, "Rock Me Baby," with another Kent stand that could make it a repeat chart performance. It's a funky, slow shuffle-rhythm blueser, tabbed "Let Me Love You," that B. B. delivers with heartfelt sincerity. Also stay with the pulsating, hard-hitting companion piece, "You're Gonna Miss Me." It's a potent double-header.

Looks like both Columbia's Claude King and Victor's Bobby Bare will go the dual-market success route with their new releases. See pop reviews.

LEIBER



STOLLER



GOLDNER

PRESENT

THE

# DIXIE CUPS



SMASH FOLLOW-UP TO "CHAPEL OF LOVE"

# "PEOPLE SAY"

REDBIRD 10-006

**OH YES!**  
**THERE IS AN ALBUM 20-100**  
**AND IT SOUNDS**  
**LIKE A SMASH**  
**TO ME**

\*JOHNNY HALONKA  
("BETA DIST. CO."—  
NEW YORK) BROKE  
IT 1ST.



**RED BIRD**

WRITTEN BY  
JEFF BARRY & ELLIE GREENWICH

1619 B'WAY  
NEW YORK, N.Y.  
212 LT 1-3420

PRODUCED BY  
LEIBER & STOLLER



# RECORD REVIEWS

• best bet B+ very good B good C+ fair C mediocre

only those records best suited for commercial use are reviewed by Cash Box

## Newcomer Picks

BREAD AND BUTTER (1:58) [Acuff-Rose BMI—Parks, Turnbow]  
TOUGH LITTLE BUGGY (2:23) [Acuff-Rose BMI—Allen]  
THE NEWBEATS (Hickory 1269)

Here's a sensational-sounding group of newcomers that can make it big with their first-time-out on Hickory stint. Artists turn in a steady paced, up beat novelty, tabbed "Bread And Butter," that's sure to make the teeners sit up and take notice in no time flat. "Tough Little Buggy" is a jet-speed thump-a-rhythmic hot-rod affair that also has what it takes for stardom. Great instrumental backdrops on both ends.

SHOW ME YOUR MONKEY (2:10)  
[Keetch, Caesar & Dino-BMI—Russell, Leander]  
TIME (1:55) [Hewlett-BMI—Johnson]  
KENNY HAMBER (De Jac 7994)

New comer Kenny Hamber can quickly jump into the winner's circle with this ultra-commercial De Jac item labeled, "Show Me Your Monkey." Tune is a pulsating, chorus-backed pop-R&B handclapper with a contagious multi-dance beat. Watch it closely. The attractive undercut, "Time," is a tradition-oriented shufflin' blues tear-jerker with a nostalgic while-back sound. Label is dist. by Atlantic.

## Best Bets

TOBIN MATTHEWS

(Warner Bros. 5455)  
● DON'T MAKE FACES (2:28)  
[Elephant, Valbo ASCAP—Gaudio, Linzer] Matthews, who clicked awhile back with "Ruby Dooby Doo," can make an even bigger chart impression aboard this WB outing. Side's a tantalizing, multi-track stomp'er with a Denny Randell arrangement. (B+) LITTLE WATERFRONT GIRL (2:12) [Northern ASCAP—Keller, Wayne] Heartfelt up-tempo tale.

DREAMTEAM (Epic 9701)

● INKA DINKA DOO (2:08)  
[Bourne ASCAP—Durante, Ryan] The Jimmy Durante classic finds a tantalizing new teen-styled rock-a-cha-cha rhythmic format in this Dreamteam stand. Catchy cut that features a bright Tommy Goodman arrangement.  
● I'M NOT AFRAID (2:33)  
[T.M. BMI—Clark, Gari] The change-of-pace beat-ballad romancer also has the earmarks of success.

DICK DALE & DEL-TONES  
(Capitol 5225)

● G L O R Y W A V E (2:01)  
[Laughter BMI—Haskell, Dunham] Dick Dale and his crew serve up a bit of gospel with their surfin' on this handclappin' shouter about the glory wave. It's a happy pop-r&b sound that could catch on. Tune has more than regional possibilities. (B+) NEVER ON SUNDAY (2:04)  
[Unart, Sidmore BMI—Hadjidakis, Towne] Fiesta-like treatment of much-played and waxed film theme. Smooth trumpet solo fronts Latin beat.

THE HOT TAMALES (Detroit 410)

● LOVE'S INVENTIONS (1:57)  
[Mead BMI—Small] Detroit, the newest addition to the London-distributed roster, can boast a solid-selling debut deck in this thumpin'-rock delight. Side's chock full of hit, pop-r&b vocal and instrumental sounds. Eye it closely. (B+) MR. STARLIGHT (2:20)  
[Mead BMI—Alexander, Thompson, Sumner, Hill, Wright] Tender, slow-beat-ballad love affair.

HAL MILLER (Amy 909)

● ON MY OWN TWO FEET (2:45) [Saturday ASCAP—Crewe, Rambeau, Rehak] The songster could have a hit on his hands with this infectious, fast-moving, hand-clappin' ode about a guy fightin' to get over a broken romance. Eye it. (B+) I STILL CARE (2:34) [Tomorrow's BMI—Gaudio] Sentimental, slow-moving teen-styled ballad.

PATTI PAGE (Columbia 43078)

● DRINA (LITTLE SOLDIER BOY) (2:36) [Regent BMI—Horton, Binckl] Here's a charming newbie by Patti Page with that "Doggie In The Window" attraction that could get attention from a variety of areas. Tune begins with a march beat and slips into a lively hora. Pleasant listening all the way. (B+) PROMISES (2:48) [S-P-R-BMI—Wecht, Manning] Tune-ful ballad with rock-a-string, choral background.

BRIAN POOLE (Monument 846)

● SOMEONE, SOMEONE (2:00)  
[Nep ASCAP—Petty, Greines] Brian Poole, who is currently riding up the English charts with this easy-going, chorus-backed shufflin' teen-angled romancer has a good chance of scoring in same fashion on this side of the foam. Watch it closely. (B+) (MEET ME) WHERE WE USED TO MEET (2:02)  
[Catherine ASCAP—Powers, Wayne, Jordan] High-powered, rhythmic danceable twister.

MILVA (4 Corners 105)

● I'LL SET MY LOVE TO MUSIC (2:49) [E. B. Marks BMI—Grudeff, Oliviero] Lark, who is extremely hot in her native Italy, can make an American reputation with this lyrical, slow-moving full orchestrated tale of devotion. Side's a natural for good music deejays. (B+) VOGLIO BENE AL MONDO (2:49) [E. B. Marks BMI—Castaldi, Torti, Oliviero] Italian version of the top side.

GALENS (Challenge 59253)

● STRANGER IN PARADISE (2:11) [Frank ASCAP—Wright, Forrest] The Galens can do Top 100 business with this first-rate re-working of the romantic evergreen. Side boasts a lush arrangement and some effective sound effects. Plenty of potential here. (B+) CHINESE LANTERNS (2:08)  
[4-Star BMI—Seals, MacKendrick, Crofts] Pleasant, medium-paced shufflin' tear-jerker.

LEON PEELS (Whirlybird 2002)

● A CASUAL KISS (2:32)  
[Lode BMI—Aguirre] Peels, former lead with the Blue Jays, goes it alone on this romantic ballad softie that could see considerable pop-r&b success. The chanter's reading is feelingful and polished. Side is reportedly getting west coast action. (B+) COTTONHEAD JOE (2:08)  
[Lode BMI—Peels] Danceable r&b rocker with lively beat.

## Best Bets

THE TRENDS (Smash 1914)

● DANCE WITH ME BABY (2:26) [Yvonne, Near North BMI—Dorsey] Newcomers, the Trends could capture plenty of sales and spins and head up the hitsville path with this shuffle-rock opus geared to the delight of the teen dance crowd. (B+) (TO BE) HAPPY ENOUGH (2:42) [Yvonne, Near North BMI—Dorsey] R&B romancer with falsetto lead.

SUSAN LYNNE (Capitol 5201)

● DON'T DRAG NO MORE (2:30) [Screen Gems-Col BMI—Kornfeld] The young lark feelingfully pleads with her guy to drag no more. A hard-driving beat insures teen dancing pleasure. Spinners could send it on its way. (B+) IN HIS CAR (2:07) [Screen Gems-Col BMI—Kornfeld] A slowed-down drag tune.

THE RIVINGTONS (Reprise 0293)

● ONE MONKEY (Don't Stop The Show) (2:01) [Frazier, White, Harris] The delightful novelty act can again capture a chart berth with this engaging, foot-stompin' rocker. Lotsa partytime fun here.  
● I TRIED (2:26) [Clinton, Cha-Wa-Wa BMI—Frazier, White, Harris] Complete change-of-pace beat-ballad tear-jerker that can also break thru.

ANTONIO CARLOS JOBIM  
(Verve 10327)

● CORCOVADO (Quiet Nights Of Quiet Stars) (2:20) [Duchess BMI—Jobim] Jobim, one of the leading clefters in the bossa nova idiom, can carry his much cut beaut to chart territory. Lush, but soft string-filled Claus Ogermann arrangement should help the deck win loads of airtime. (B+) ONE NOTE SAMBA (2:15)  
[Duchess BMI—Jobim, Mendonca] Enticing treatment of one of Jobim's earliest bossa nova successes.

THE REVELIERS (Lawn 237)

● MAUREEN (2:38) [Palmina-BMI—James] The Reveliers come on strong with a tough up tempo, hand clapping swinger. The all instrumental rocker has good possibilities for chart success. Eye this one carefully. (B+) PART III (2:36) [Palmina-BMI—Crane-Desmond-Lombardi-Dush-Dush-James] Hard rock blues stuff on this end.

FREDERICK FENNEL  
(Mercury 72304)

● I AIN'T DOWN YET (2:13)  
[Frank ASCAP—Willson] Fennell, famed for his work in the symphonic field, can become an important factor in the pop singles dept.—a la Arthur Fiedler—with this rousing, full ork treatment of the "Unsinkable Molly Brown" dandy. (B+) SEVENTY-SIX TROMBONES SKA (2:16) [Frank ASCAP—Willson] Another Meredith Willson delight—this one from "Music Man." But ends are in Fennell's "Broadway Marches" LP.

JOHNNY KNIGHT  
(20th-Century-Fox 518)

● COME SUMMER, COME LOVE (1:55) [Ameropean, Coats-Of-Arms ASCAP—Gluk] Knight appears to be on the right track with this real catchy jump-a-rhythmic affair. Pleasant teen fare that can easily find its way onto the deejay turntables. (B+) SWEET LIKE A ROSE (2:02) [Precedent BMI—Dar-row] Soft and pretty cha cha romancer.

LOU RAWLS (Capitol 5227)

● LOVE IS BLIND (2:30) [Metric BMI—Newman] Lou Rawls could see both pop and r&b action with this smooth blues item tagged "Love Is Blind." The lilting Nashville-flavored backdrop is an enhancement to the chanter's soulful reading. Melody and lyrics are captivating. Side merits deejay attention. (B+) I FELL IN LOVE (2:21)  
[Metric BMI—Rielly] A rock-a-rhythmic handclapper with a spirited reading from Rawls. Plenty of appeal here.

DON THOMAS (Coral 62418)

● HEY LITTLE DANCING GIRL (2:36) [Painted Desert BMI—Thomas, Randell] Here's a Mersey beat type rocker with an arresting melody and lyric that should give the teen crowd plenty of dance excitement. A honky-tonk boogie piano solo is added effect. The sound is in vogue and this one could pull some coin. (B) SHE ACTS LIKE SHE DOESN'T CARE (2:17)  
[Champion BMI—Thomas, Thomas] Silly teen romancer.

THE PROFESSORS (Omen 3)

● LITTLE RED RIDING HOOD (2:27) [Goldteak, Irving BMI—Drake] Here's a rhythmic thumper on the Omen label (Dist by A&M) by the professors that could cause plenty of stir at the marketplace. It's a driving-beat affair with some first rate instrumentation. Unison vocal & hand-clappin' is high spirited and contagious. (B+) THE THREE BEARS (2:39)  
[Goldteak, Irving BMI—Brown, Shannon] More of the same.

THE CONVENTIONALS  
(Swan 4189)

● NO, NO, NO, THEY GOTTA GO (2:03) [Suffolk BMI—Balandine, Deane] The Conventionals lash out with a timely novelty rocker that votes nay to the topless swim suit. Beaches are polled convention style and all shout No! Peppery rock sound has natural teen appeal. This one could happen on the air and on the market. (B+) PINK & PURPLE (2:20)  
[Ludlow BMI—Stride, Deane] Usual r&r vocal affair.

TEDDY MERTENS (Cameo 328)

● THIS IS MY PRAYER (2:18)  
[Chappell ASCAP—Nisa, Panzeri] The recent San Remo Song Festival winner gets a silky trumpet essay by Teddy Mertens. The tune shows melodic goodness that warrants repeated listening. A top-notch programming item that could come from left field to score. (B+) MY RIVER OF MEMORIES (3:14) [Zodiac BMI—Cogoi, Gary] Another warm trumpet offering with soft choral-harp background.



# THE SERENDIPITY SINGERS

the hottest group in the industry  
— with sales to back it up!

NEW! THEIR 3RD SMASH SINGLE IN A ROW!

## DOWN WHERE THE WINDS BLOW

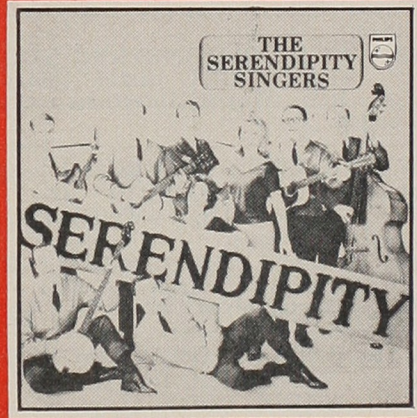
(CHILLY WINDS)

Prettiest new ballad of the Summer from their best selling LP, "The Many Sides Of The Serendipity Singers" Backed with "THE NEW FRANKIE AND JOHNNY SONG" . . . . #40215

2 BIG ALBUMS RIDING HIGH ON THE CHARTS



The Many Sides Of The Serendipity Singers  
PHM 200-134 PHS 600-134



The Serendipity Singers  
PHM 200-115 PHS 600-115



### PHILIPS RECORDS

ONE WORLD OF MUSIC  ON ONE GREAT LABEL



# RECORD REVIEWS

● best bet B+ very good B good C+ fair C mediocre

only those records best suited for commercial use are reviewed by Cash Box

## Best Bets

### JOE HARNELE (Kapp 604)

● SONTA PORTUGUESE (2:32) [Robbins ASCAP—Lytelton, Young] The 88'er-orkster can get back in his money-making ways with this delightful, easy-going, danceable jazz-flavored affair with a top-drawer melodic sound.

(B+) I'LL SET MY LOVE TO MUSIC (2:27) [E. B. Marks BMI—Grudeff, Jessel, Oliviero] Romantic, middle-of-the-road offering.

### RAY ALLEN (DCP 1103)

● NO TOP SUIT (2:00) [Wanessa, South Mt. BMI—Allen, Merrell] The chanter tells a tale of the guy who went bug-eyed at the sight of a lass in a topless swim suit. However, the finale is in the "Naughty Lady" vein. It's topical with a clever ending and could happen with a bit of airtime.

(B+) YESTERDAY A SWEET-HEART BUT TODAY A SOUVENIR (3:17) [So. Mt. BMI—Ranzazzo, Barberis, Weinstein] Al Martino-like schmaltz tune.

### BUD & TRAVIS (Liberty 55713)

● GIMMIE SOME (1:56) [E. H. Morris BMI—Strouse, Adams] The pop-folk songsters could create some sales excitement with this rollicking, contagious novelty with a warm Latinish beat. Tune is from the forthcoming production of "Golden Boy."

(B+) HOW LONG, HOW LONG BLUES (2:11) [Leeds ASCAP—Joseph, Carr] Funky, soulful folk-blueser.

### DAVE BRUBECK QUARTET (Columbia 43091)

● TOKI'S THEME (2:07) [Gorton & E. B. Marks BMI—Brubeck] The Brubeck crew have had hits in the past and they can do it again with this extremely fast-moving, pulsating midstream jazz instrumental. A natural for ops and platter spinners.

(B+) UNISPHERE (2:26) [Derry BMI—Brubeck] Catchy, happy quick-paced jazz sounds.

## B+ REVIEWS

### RICK JARRARD

(Chattahoochee 657)

(B+) CONSTANTLY (2:00) [World Wide BMI—Seracini, Julien] Very pretty, soft beat cha cha romancer with strings.

(B) WHY (2:10) [Conte-Fowley BMI—McClane, Siefert, Marley, Nelson] Tender beat-ballad pleader.

### THE KING PINS (Federal 12519)

(B+) YOU'RE USING ME (2:17) [Sonlo BMI—Lee, Thompson] Driving, thump-a-rhythmic blueser.

(B) I GOT THE MONKEY OFF MY BACK (2:59) [Sonlo BMI—Thompson] Throbbing beat-ballad opus.

### THE DAYLIGHTERS (Tip Top 2009)

(B+) MAGIC TOUCH (2:15) [Anthor, World Int. BMI—Colbert, Jr.] Rhythmic shuffle-jumper. Not the oldie.

(B) I CAN'T STOP CRYING (2:00) [Anthor, World Int. BMI—Colbert] Touching, cha cha-like love affair.

### THE MOORE TWINS (Todd 1100)

(B+) ROSEMARY (2:00) [Merge BMI—Duncan] Most attractive, teen beat cha cha romantic. Watch it.

(B) IT CAN NEVER BE THE SAME (2:24) [Merge BMI—Duncan] Tear-compelling ballad softie.

### DELLA REESE (RCA Victor 8394)

(B+) IF I DIDN'T CARE (2:30) [Chappell ASCAP—Lawrence] Standard done in winning jazz-blues fashion.

(B) THE WIND IN THE WILLOWS (2:12) [Alexis ASCAP—Livingston, Adelson] Pleasant ballad.

### CLAUS OGERMAN (MGM 13260)

(B+) ROCK DEM BELLS (2:17) [Merna BMI—Ogerman] Organ led jumper from fine arranger.

(B+) CONNIE FRANCIS—LADY VALET THEME (2:17) [Merna BMI—Ogerman] Catchy and soothing instrumental theme from "Looking For Love."

### THE CAMBRIDGE STRINGS (London 9683)

(B+) CHARMAINE (SKA) (1:45) [Miller ASCAP—Pollack] Oldie, revised in fetching ska tempo.

(B+) SO BLUE (1:49) [Brown & Henderson, Jungnickel ASCAP—DeSylva, Brown, Henderson, Crawford] More ska stylings on another years back tune.

### MARY SAENZ (Dot 16639)

(B+) MY THREE FRIENDS (2:23) [Criterian ASCAP—Wayne, Silbert] Teenage tear-jerker ballad.

(B) I HAVE SOMETHIN' YOU CAN'T GET (2:21) [Mary Saenz BMI—Wayne] Infectious rock-a-ballad.

### WAYNE WHITE (Gaye 234)

(B+) RUN'N RABBITS (2:17) [Margie-G BMI—White] Blues up-tempo stomper.

(B) WALK THE CHALK LINE (2:15) [Margie-G BMI—White] Funky blues sound.

### GALE GARNETT (RCA Victor 8388)

(B+) WE'LL SING IN THE SUNSHINE (2:54) [Lupercalia Garnett] Easy-going, pop-folk lyrical affair.

(B+) PRISM SONG (2:35) [Lupercalia ASCAP—Garnett] Interesting folk-blueser.

### MINUTE MEN (Original Sound 095)

(B+) GREAT DAY COMIN' [Bonnyview ASCAP—Holden, Woods] Folk ode with a utopian theme.

(B) FLAG WAVIN' [Bonnyview ASCAP—Holden] Nationalistic, dual-track folk march.

### ROGER WEBB & TRIO (Swan 4188)

(B+) SHE LOVES YOU (2:32) [Gil BMI—Lennon, McCartney] Up-tempo jazz-oriented version of Beatles' smash. Strong change-of-pace programming fare.

(B+) DO YOU WANT TO KNOW A SECRET (2:13) [Metric BMI—Lennon, McCartney] Most appealing, Latin beat treatment of big hit.

## B+ REVIEWS

LINK WRAY (Swan 4187)  
(B+) SUMMER DREAM (2:42) [Florentine, Andval, Palmina BMI—Wray] Saccharine instrumental.  
(B) DEUCES WILD (2:22) [Florentine, Andval, Palmina] Surfin'-type instrumental.

PANCHO VILLA (Pee Vee 100)  
(B+) AIN'T THAT BAD (2:07) [Pan-Vil BMI—Taylor, Villa] Funky blues with vocal sound effects.  
(B) PROGRESS (2:26) [Pan-Vil BMI—Villa, Witherspoon] Jazz-like rock instrumental.

CANADIAN BEADLES (Tide 2003)  
(B+) THINK I'M GONNA CRY (2:10) [Cepha BMI—Triune] Very mild rock vocal.  
(B) I'LL SHOW YOU THE WAY (1:50) [Cepha BMI—Blunt, Triune] Uptempo Liverpool sound.

DENNY & JAY (Capitol 5216)  
(B+) H-U-R-T (2:06) [Patrel ASCAP—Rockwell, Cabbage] Polished romancer with folk flavor.  
(B+) TWO LIES (2:15) [Patrel ASCAP—Rockwell, Cabbage] Latin-folk-pop affair with good lyric.

THE PRINCETON FIVE (Princeton 711)  
(B+) SUMMERTIME BLUES (2:01) [American BMI—Cochran, Capehart] Slick rocka-billy.  
(B) SURE KNOW A LOT ABOUT LOVE (2:14) [Maverick, Kavelin BMI—Mize] Hard-beat rock vocal.

THE WANDERERS THREE (MGM 13257)  
(B+) GIMME SOME (1:50) [E. H. Morris ASCAP—Strouse, Adams] Folk novelty, good fun deck.  
(B+) LONG TIME MAN (2:12) [P. D.] Traditional folk tune smoothly delivered.

ED AMES (RCA Victor 8393)  
(B+) GIVE ME BACK MY LIFE (2:33) [Marimba ASCAP—Weiss, Sherman] Ramblin' Rose type lilter.  
(B+) MONICA (2:13) [Famous ASCAP—Shuman, Bernstein] Feelingful rendition of "Carpetbaggers" love theme.

NOMADS (Pharos 100)  
(B+) SAN FRANCISCO BAY BLUES (2:16) [Hollis BMI—Fuller] High-spirited reading of folk sturdie.  
(B) OH JENNIE (2:38) [P.D.] Emotion-packed version of the folk traditional.

FREEWHEELERS (Epic 9700)  
(B+) SAN FRANCISCO BAY BLUES (2:28) [Hollis BMI—Fuller] Jazz-flavored treatment of folk oldie.  
(B) SUSU (2:20) [Valiant ASCAP—Evans, Van Dam] Infectious near-tango romantic novelty.

RONNIE BAKER (Laurie 3250)  
(B+) SEE YOU IN SEPTEMBER (2:30) [Vibar ASCAP—Edwards, Wayne] Pleasant, soft cha cha beat-ballad revival of short-while-back hit.  
(B) YOUNG AT HEART (2:30) [Cherio BMI—Lee, Richards] Silky smooth up-dating of Sinatra's goldie.

BILLY DANIELS (Liberty 55716)  
(B+) THAT OLD BLACK MAGIC (2:30) [Famous ASCAP—Arlen, Mercer] Daniels updates his own hit.  
(B) WOE, WOE, WOE (2:09) [10 East BMI—Horton] Soulful wailing of bluesy item.

THE FIVE-HUNDREDS (Mercury 72291)  
(B+) WHEEL'S LAST RIDE (2:10) [Circle Seven, Lonette BMI—Carroll] Fast-paced, unhappy-ending motorcycle rocker.  
(B+) RUN LITTLE RABBIT (2:07) [T.M. BMI—Darin] Bright Bobby Darin-penned thumper.

ROGER HOPKINS & CHEVELLES (Little Nashville 0779)  
(B+) RONDA ROAD RUNNER (1:40) [Martys BMI—Nation] Chuck Berry-like pounder.  
(B) I MADE HER THAT WAY (2:55) [New Keys, Sun Star BMI—Hager, Glenn] Haunting beat-ballad weeper.

THE JOKERS (Brunswick 55268)  
(B+) SPANISH HULLY GULLY (2:10) [Regent BMI—Rendall, Clauwers] "Malaguena" re-visited in teen-styled hully gully fashion. Mostly instrumental.  
(B+) DRINA (2:05) [Regent BMI—Binicki] Thumpin' instrumental rocker.

"5" ROYALES (King 5053)  
(B+) THINK (2:34) [Armo BMI—Pauling] Hard-driving, rhythmic pop-r&b weeper.  
(B) I'D BETTER MAKE A MOVIE (2:17) [Armo BMI—Carter, Moore, Tanner] Low-down funky bluser.

HARRY "SWEETS" EDISON (Sue 101)  
(B+) I WISH YOU LOVE (3:04) [Leeds ASCAP—Trenet, Beach] Jazz-blues treatment of chestnut.  
(B+) HELLO DOLLY (2:45) [E. H. Morris BMI—Herman] Instrumental of the oft-cut show tune.

MARY ANN MILES (Celeste 801)  
(B+) WITHOUT SOMEONE TO LOVE (2:15) [Herlinda BMI—Allen] Raunchy, uptempo blues tear-jerker.  
(B) PRIVATE WORLD (2:15) [Melodic BMI—Allen] Ditto.

WILLIS JACKSON (Prestige 327)  
(B+) NIGHTINGALE (1:50) [E. B. Marks BMI—Cugat, Rosner] Funky, lyrical jazz instrumental.  
(B+) PEOPLE (3:25) [Chappell ASCAP—Merrill, Styne] Impressive reading of B'way ballad.

DAVID ALLEN (Everest 2046)  
(B+) SWEET AND LOVELY (1:37) [Robbins ASCAP—Arnheim, Tobias, Lemure] Top-drawer reading of the evergreen.  
(B+) SKYLARK (2:45) [G. Simon ASCAP—Mercer, Carmichael] Another sturdie smoothly essayed.

CAROL HEDIN (Franc 4503)  
(B+) TOMORROW IS A LONG TIME (2:53) [M. Witmark ASCAP—Dylan] Extremely pretty popfolk ballad.  
(B) SOME OLD WOMAN (3:03) [P.D.] Feelingful rendition of the folk oldie.



# HEAT-UP YOUR CASHBOX WITH CAPITOL'S GIGANTIC BLAST FOR "PROMENADE"!



## TIE IN

...with the biggest and the most important  
consumer campaign now running for any label!

<b>TV GUIDE</b> July 11th New York Metropolitan Southern California Washington-Baltimore Kansas City St. Louis Dallas Houston	<b>TV GUIDE</b> July 18th Kansas City St. Louis Dallas Houston	<b>LIFE</b> July 24th New York Chicago Los Angeles Philadelphia Boston-Providence	<b>SPORTS ILLUSTRATED</b> August 24th
<b>SUNSET</b> July	<b>SHOW</b> August	<b>PLAYBOY</b> August & September	<b>ESQUIRE</b> September
			<b>NEW YORKER</b> May 2nd May 30th June 6th June 13th August 15th

...with the specially designed PROMENADE  
window and counter display!\*

...with your own city's current PROMENADE concerts!

## CASH IN

...on the 106 different PROMENADE titles that  
make any record buyer a PROMENADE customer!

...on the price — just right for the consumer — and just  
right for you: \$2.02 mono, \$2.52 stereo!

...on the August PROMENADE release:  
**"Music From Great French Motion Pictures"** —  
 12 haunting themes, including the Academy Award  
 Winner "Black Orpheus", "7 Capital Sins",  
 "And God Created Woman"!

\*Ask your C.R.D.C. sales representative for this free display!



## I WANT YOU TO MEET MY BABY

4-43082  
EYDIE GORME

## SAM HILL

4-43083  
CLAUDE KING

## Toki's Theme

4-43091  
DAVE BRUBECK

## ANGELITO

4-43045  
RENE AND RENE

## Invisible Tears

4-43061  
RAY CONNIFF

**COLUMBIA RECORDS**



© COLUMBIA MARCAS REG. PRINTED IN U.S.A.



# RADIO ACTIVE CHART

A survey of key radio stations in all important markets throughout the country to determine by percentage of those reporting which releases are being added to station play lists this week for the first time and also the degree of concentration combining previous reports. Percentage figures on left indicate how many of the stations reporting this week have added the following titles to their play list for the first time. Percentage figures on right include total from left plus the percentage title received in prior week or weeks. (SURVEY COMPLETED TO JULY 8TH)

% OF STATIONS ADDING TITLES TO PROG. SCHED. THIS WEEK	TITLE	ARTIST	LABEL	TOTAL % OF STATIONS TO HAVE ADDED TITLES TO PROG. SCHED. TO DATE
75%	People Say—Dixie Cups—Red Bird			75%
71%	Tell Me—Rolling Stones—London			71%
67%	Sugar Lips—Al Hirt—RCA Victor			99%
65%	Hey Girl Don't Bother Me—Tams—ABC Paramount			65%
63%	How Do You Do It—Gerry & Pacemakers—Laurie			70%
61%	Worry—Johnny Tillotson—MGM			61%
59%	Never Pick A Pretty Boy—Dee Dee Sharp—Cameo			59%
59%	Al Di La—Ray Charles Singers—Command			84%
45%	Handy Man—Del Shannon—Amy			95%
40%	In The Misty Moonlight—Jerry Wallace—Challenge			47%
39%	Everybody Needs Somebody To Love—Solomon Burke—Atlantic			39%
35%	Where Did Our Love Go—Supremes—Motown			80%
34%	It's A Cotton Candy World—Jerry Wallace—Mercury			34%
33%	Walk Don't Run '64—Ventures—Dolton			95%
31%	Ain't She Sweet—Beatles—Atco			31%
30%	G.T.O.—Ronnie & Daytones—Amy			30%
29%	A Tear Fell—Ray Charles—ABC Paramount			29%
26%	Mixed-Up Shook-Up Girl—Patty & Emblems—Herald			97%
25%	I Should Have Known Better—Beatles—Capitol			25%
23%	(You Don't Know) How Glad I Am—Nancy Wilson—Capitol			96%
22%	It's A Sin To Tell A Lie—Tony Bennett—Columbia			22%
20%	Close Your Eyes—Arthur Prysock—Old Town			20%
20%	A Hard Day's Night—Beatles—Capitol			98%
19%	She's The One—Chartbusters—Mutual			86%
18%	Invisible Tears—Ray Conniff—Columbia			59%
17%	Hangin' On To My Baby—Tracey Dey—Amy			51%
16%	Everybody Loves Somebody—Dean Martin—Reprise			96%
14%	Looking For Love—Connie Francis—MGM			14%
13%	I Believe—Bachelors—London			55%
12%	A Taste Of Honey—Tony Bennett—Columbia			12%
11%	Sunny—Neil Sedaka—RCA Victor			37%
11%	Sailor Boy—Chiffons—Laurie			11%
10%	All Grown Up—Crystals—Philles			18%
10%	I Surrender Dear—April Stevens & Nino Tempo—Atco			10%

### LESS THAN 10% BUT MORE THAN 5%

TITLE	TOTAL % TO DATE	TITLE	TOTAL % TO DATE	TITLE	TOTAL % TO DATE
I Like It Like That Miracles (Tamla)	87%	Summer Means Fun Bruce & Terry (Columbia)	29%	Better Watch Out Boy Accents (Commerce)	17%
Thank You Baby Shirelles (Scepter)	48%	Goofus Bent Fabric (Atco)	8%	Angelito Rene & Rene (Columbia)	41%
Mickey Mouse Denny Provisor (20th Fox)	9%	C'mon & Swim Bobby Freeman (Autumn)	40%	Seventh Dawn Henry Jerome (Decca)	7%

THEY'VE GOT ANOTHER SMASH!

# THE LETTERMEN PUT AWAY YOUR TEAR DROPS



b/w SEVENTH DAWN THEME #5218

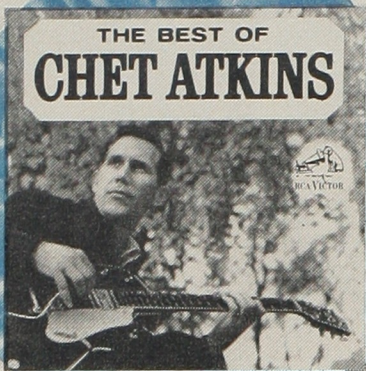
P.S. The Lettermen open at New York's fabulous Latin Quarter July 15!



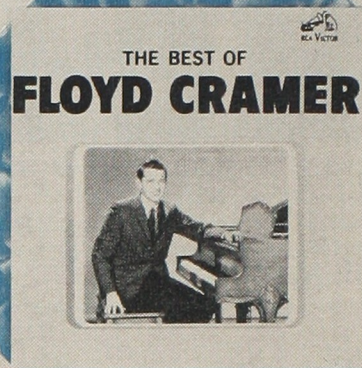
(S)T-2083



Personal Management; Jess Rand, 140 South Beverly Drive, Beverly Hills, California



Chet's greatest hits from the past, like "Yankee Doodle Dixie," "Main Street Breakdown," "Country Gentlemen," "Malaguena" and "Blue Ocean Echo."  
LPM/LSP-2887 (e)

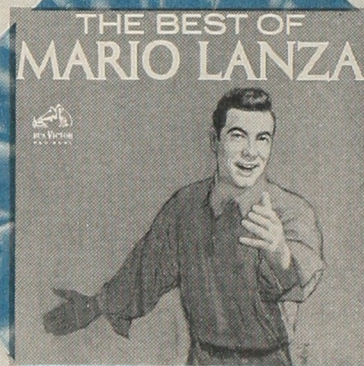


Floyd's big hits in one great album, such as "Last Date," "Java," "Satan's Doll," "Unchained Melody," "Your Last Goodbye."  
LPM/LSP-2888

# 'BEST OF' ALBUMS - EVERY ONE A SALES WINNER!



"Glibness of Mort Sahl, irreverence of Lenny Bruce!"—Chicago Sunday Tribune. Your customers know he's very, very funny, too!  
LPM/LSP-2852



A great singer—and the songs that made him a legend. "Be My Love," "Because You're Mine," "Serenade" from "The Student Prince," others.  
LM/LSC-2748 (e)



The leading man's outstanding performances. Includes "Peter Gunn" and "Mr. Lucky" from TV, "Moon River," "Charade," "Days of Wine and Roses" and "Hatari" from the movies.  
LPM/LSP-2693



The kings of the folk world sing "We Shall Overcome," "This Train," "The Midnight Special," "Gunslinger," "Reedy River," "A Wayfaring Stranger."  
LPM/LSP-2889



Jim sings his heart out on tunes like "He'll Have to Go," "Am I Losing You?," "Four Walls," "Guilty," "Danny Boy," "The Blizzard."  
LPM/LSP-2890

## RCA VICTOR



# RECORD RAMBLINGS

## NEW YORK:

West Coast disk promoter Irwin Zucker in New York for confabs with clients and big promo on etchings from "Bedtime Story" flick. Mrs. Zucker, known professionally as Dee Hill, in town with hubby to meet with the publishers of her first novel, "Three To Make Merry," which is being considered for films. . . . Hannah Joyce (RCA Victor) is hobbling about on crutches since spraining her ankle last week at a swimming pool—our best wishes for a speedy recovery. . . . Another disk rep on the sick list is

currently clicking with a deck dubbed, "I Like It Like That." . . . Congratulations to fellow CB staffer Ira Howard and his lovely wife Beverly on the birth of their third son, born Jul. 7. They've named him Corey Lee. . . . Bobby Poe, president of Kansoma-Chartbuster Music & Productions, writes the company is swinging with two hits, "She's The One" by the Chartbusters and "Mary Oh Mary" by Fats Domino on ABC-Paramount. . . . Pubbery credits on a recent review of the Beatles tunes "Taste Of Honey" and "Misery" should have gone to Geo. Pincus & Sons-ASCAP and Gil-



LOU RAWLS



EYDIE GORME



RIP CHORDS

Roy Botachio of Capitol. Roy's been recuperating at home for several weeks—we also wish him a quick return to his Capitol desk. . . . Congratulations to Phil and Elaine Wesen who celebrated their 14th wedding anniversary on Jul. 4. Phil's the branch manager of London Records here. . . . In our recent review of Earl Wrightson's new album on Columbia, "Shakespeare's Greatest Hits," we should have referred to the composer as Dick Hyman. Our apologies to Dick. . . . Burl Ives has dropped 75 pounds in the last four months and sez he plans to lose another 75 before the end of the year. Burl's new LP on Decca is "True Love."

BMI respectively. . . . Atlantic's Len Sachs sez the Beatles' Atco disk of "Ain't She Sweet" is a blockbuster along with the new April Stevens and Nino Tempo waxing, "I Surrender Dear."

Mike Corda of Corda Music, writes he's now settled in Las Vegas and has written two new tunes with Jack Wilson that have been cut by Sammy Davis Jr., and Maurice Chevalier—"Let's Make The Most Of A Beautiful Thing" and "Speaking Of Girls." Mike's pals can reach him at 3143 Industrial Road in Las Vegas. . . . We had a nice letter from Al Cechere of Audition Records in Syracuse that the Vaqueros, currently clicking territorially with "Echo," appeared with the Lettermen at the Ontario Arena in Niagara Falls. . . . Folk gal Carol Hedin has etched a new Bob Dylan tune for the Franc label tagged, "Tomorrow Is A Long Time." . . . Mary Picano of I. J. Morgan in Philly buzzes that "La La" by the Cobras is an unbelievable seller despite the fact there is almost no local air play. . . . Powertree Records in New York have assigned distribution for the Philadelphia area to Progress Distributors.

Warner Bros. chanter Freddie Cannon was stricken with a sore throat and exhaustion aboard a plane last week (1) on his way to a signing engagement in Cleveland. Cannon was met at the airport by doctors who treated him, after which he made his skedded appearance. After the show Cannon flew to California for a three-week rest in a hospital. . . . Sue Records' Barry Resnick buzzed that a recent appearance at Palisades Park by the Johnson Sisters—who performed their new etching of "I Found My Place" was an overwhelming success and met with great approval from the fans attending. . . . Colin Romoff, conductor for Carol Burnett's "Fade Out, Fade In" show, has been signed by Abbe Lane as musical coordinator for her new nitery act which bows this month (20) at the Shoreham in Wash., D.C.

Jack Fine, ABC-Paramount promo rep, buzzes that the Tams have their biggest side to date with "Hey Girl, Don't Bother Me." Also happening for Jack are "Mary Oh, Mary" by Fats Domino and both sides of the new Ray Charles deck, "No One To Cry To" and "A Tear Fell." . . . It was nice to meet Lesley Miller who paid a visit to the CB offices last week with indie promo rep Morty Wax. Lesley has a first issue on RCA Victor tagged "Once A Fool" backed with "Just Another Fresh Boy." . . . Claudette Rogers (Mrs. William Smokey Robinson) of the Miracles, has left the click vocal group to take time out for a little "Miracle." . . . The group is

Eydie Gorme and Columbia have high hopes for the lark's new single, "I Want You To Meet My Baby" paired with "Can't Get Over (The Bossa Nova)." Initial orders are heavy according to diskery execs. . . . Ruth Olay, Della Reese and Lou Rawls are skedded for p.a.'s on the Steve Allen Show this month. Della's latest for RCA Victor is "If I Didn't Care" and Lou's new Capitol etching is "Love Is Blind." . . . Kristin White is "Love Is Blind." . . . Kristin White is

(Continued on page 22)

# FOR EXTRA SALES PUSH THESE PROVEN PROFIT MAKERS



## USE THIS HANDY FORM TO ORDER FROM YOUR RCA DISTRIBUTOR

QUANTITY  
STEREO MONO

THE BEST OF MANCINI—Henry Mancini LPM/LSP-2693	_____	_____
THE BEST OF MARIO LANZA LM/LSC-2748 (e)	_____	_____
THE BEST OF DAVE GARDNER LPM/LSP-2852	_____	_____
THE BEST OF CHET ATKINS LPM/LHP-2887 (e)	_____	_____
THE BEST OF FLOYD CRAMER LPM/LSP-2888	_____	_____
THE BEST OF THE LIMELITERS LPM/LSP-2889	_____	_____
THE BEST OF JIM REEVES LPM/LSP-2890	_____	_____
"THE GLENN MILLER STORY" AND OTHER HITS LPM/LSP-1192 (e)	_____	_____
ELVIS' GOLDEN RECORDS, VOL. I LPM/LSP-1707 (e)	_____	_____
JEANETTE MacDONALD AND NELSON EDDY FAVORITES IN STEREO LPM/LSP-1738	_____	_____
THE BEST OF THE AMES LPM/LSP-1859 (e)	_____	_____
COMO'S GOLDEN RECORDS— Perry Como LPM/LSP-1981 (e)	_____	_____
ELVIS' GOLDEN RECORDS, VOL. II LPM/LSP-2075 (e)	_____	_____
BIG HITS BY PRADO LPM/LSP-2104	_____	_____
COOL WATER—Sons of the Pioneers LPM/LSP-2118	_____	_____
TWILIGHT MEMORIES—Three Suns LPM/LSP-2120	_____	_____
THE BROWNS SING THEIR HITS LPM/LSP-2260	_____	_____
EDDY ARNOLD SINGS THEM AGAIN LPM/LSP-2185	_____	_____
HANK SNOW SOUVENIRS LPM/LSP-2285	_____	_____
EDDIE FISHER'S GREATEST HITS LPM/LSP-2504 (e)	_____	_____
THE BEST OF SAM COOKE LPM/LSP-2625	_____	_____
NEIL SEDAKA SINGS HIS GREATEST HITS LPM/LSP-2627	_____	_____
PAUL ANKA'S 21 GOLDEN HITS LPM/LSP-2691	_____	_____
ELVIS' GOLDEN RECORDS, VOL. III LPM/LSP-2765	_____	_____
BELAFONTE AT CARNEGIE HALL LOC/LSO-6006	_____	_____

NAME \_\_\_\_\_  
COMPANY \_\_\_\_\_ TITLE \_\_\_\_\_  
ADDRESS \_\_\_\_\_  
CITY \_\_\_\_\_ STATE \_\_\_\_\_

# RCA VICTOR

The most trusted name in sound

Peter Sellers?

NO!

Wine Cellars?

NO!

Baseball Cellars?

NO!

Salt Cellars?

NO! JUST HOT RECORD SELLERS!

SELFISH ONE  
Jackie Ross - Chess 1903

BREAKING POINT b/w  
THAT MAN BELONGS  
BACK HERE WITH ME

Etta James - Argo 5477

LOVER COME BACK TO ME  
The Flamingos - Checker 1084

JO ANN  
Bo Diddley - Checker 1083

CHESS  
producing company

2120 Michigan Ave., Chicago 16, Ill.



TOP 50  
IN  
R&B LOCATIONS

Table with 3 columns: Rank, Song Title, Artist. Includes songs like 'GOOD TIMES', 'UNDER THE BOARDWALK', 'KEEP ON PUSHIN'', etc.



RECORD  
RAMBLINGS

(Continued from page 21)

infos that Sammy Davis Jr.'s new disk, "Not For Me," has some first rate harmonica backing by Billy Riley...



ROBERT SILVER



CANADIAN BEADLES



THE WAYFARES

fall to star Toni Arden and her brother Jan... The Rip Chords come up with a timely topic for their new Columbia dinking dubbed, "One Piece Topless Bathing Suit..."

CHICAGO:

Australian singer-guitarist Danny DeLacy was in Chi for appearances at the Music Show. Danny, who's been on a U.S. tour, waxed two new sides in the states for release on DeVille Records...

The Impacs, held over at Club Laurel, will perform their "Kool It" (King) click at the big Harvey, Ill. hop this week...

leans took over Bert's former post... It's Chicago's Venturas and not The Ventures who'll appear with Li'l Wally and his Harmony Boys at the Aragon 7/17...

More" by Nathan McKinney (Ray-Co).

HOLLYWOOD:

Epic Records new recording group, The Back Porch Majority feted at a party at Ledbetters... Randy Wood, Vee-Jay president trekked to Phoenix to sign two new artists, singer Donnie Cole, and vocal group, The Heavenly Mariachis...

Capitol's public relations director, Brown Meggs in town for home office confabs... Dick Clark has set Jimmy Rodgers, Wayne Newton, Terry Stafford, The Paris Sisters, and Johnny Rivers for guest stints on American Bandstand...

PHILADELPHIA:

Talked to Matty "The Humdinger" Singer, ABC-Paramount's jovial promo rep at David Rosen, who was jubilant over the early sales returns and airplay on "Hey Girl, Don't Bother Me" by the Tams...

# ELVIS

**A NEW TWO-SIDED  
SUMMER VACATION HIT**



45 RPM

RCA VICTOR



## ELVIS

**SUMMER VACATION SPECIAL**

By popular demand

First time on 45 RPM

## SUCH A NIGHT

Plus new song

## NEVER ENDING

Ask for the **VIVA LAS VEGAS EP** with the hit song "C'MON EVERYBODY"

**AVAILABLE NOW FROM YOUR RCA VICTOR DISTRIBUTOR**

### #8400

# RCA VICTOR



The most trusted name in sound



# BLUE NOTE HAS THE HOTTEST JAZZ SINGLES

IT'S A HIT!

# JIMMY SMITH PORK CHOP

BLUE NOTE 45x1906

The Big Single  
From The Hit Album

# DONALD BYRD

# CRISTO REDENTOR / ELIJAH

BLUE NOTE 45x1907

From His New Album BLP 4124

"A NEW PERSPECTIVE"

# BLUE NOTE

43 W 61st St. New York 23, N. Y.

ELVIS PRESLEY	WHAT'D I SAY	RCA VICTOR
	Progressive Music Inc.	
BILLY J. KRAMER	LITTLE CHILDREN	LIBERTY
	Rumbalero Music, Inc.	
	DO I LOVE YOU	
RONETTES		PHILLES
	Hill & Range/Mother Bertha	
	MILORD	
BOBBY DARIN		ATCO
	Alamo Music, Inc.	
	WORLD OF LONELY PEOPLE	
ANITA BRYANT		COLUMBIA
	Ross Jungnickel	
	A TEAR FELL	
RAY CHARLES		ABC PARAMOUNT
	Progressive Music, Inc.	
	NO ONE TO CRY	
RAY CHARLES		ABC PARAMOUNT
	Hill & Range Songs, Inc.	
	ON THE OUTSIDE (LOOKING IN)	
BILLY EDD WHEELER		KAPP
	Aberbach, Inc.	
	POUPEE BRISEE	
AL HIRT		RCA VICTOR
	Hill & Range Songs	
	TALKIN' BOUT YOU	
RAY CHARLES		ATLANTIC
	Progressive Music Inc.	
	I'LL TOUCH A STAR	
TERRY STAFFORD		CRUSADER
	Gladys-Bien-LesJohn	
	TITENA	
ART MOONEY		KAPP
	Ross Jungnickel	
	HERE I GO AGAIN	
THE HOLLIES		IMPERIAL
	Rumbalero Music, Inc.	
	HEARTS ARE MADE TO BE BROKEN	
SAPPHIRES		ABC PARAMOUNT
	Hill & Range Songs Inc.	
	LET'S BREAK UP FOR AWHILE	
SAPPHIRES		ABC PARAMOUNT
	Hill & Range Songs Inc.	
	SHAKE RATTLE AND ROLL	
THE SWINGING BLUE JEANS		IMPERIAL
	Progressive Music, Inc.	
	THE ABERBACH GROUP	
	1619 Broadway, New York, N. Y.	



# JUKE BOX OPS' RECORD GUIDE

## ACTIVE with OPS

(Selections NOT on Cash Box Top 100 reported going strongly with ops.)

LOVE AIN'T NOTHIN' Johnny Nash (Argo 5471)	TROUBLE I'VE HAD Clarence Ashe (J&S 1466)
BREAKING POINT Etta James (Argo 5477)	TIME IS ON MY SIDE Irma Thomas (Imperial 66041)
DOWN BY THE RIVERSIDE Herbie Mann (Atlantic 7786)	SOLE, SOLE, SOLE Siw Malmkvist (Jubilee 5479)
JAMAICA SKA Ska Kings (Atlantic 2232)	IT WILL STAND Showmen (Imperial 66033)
WHAT CAN A MAN DO Ben E. King (Atco 1303)	OH! BABY (WE'VE GOT A GOOD THING GOIN') Barbara Lynn (Jamie 1277)
GOOFUS Bent Fabric (Atco 6304)	TITENA/SATIN DOLL Art Mooney (Kapp 598)
PORK CHOP Jimmy Smith (Blue Note 1906)	TASTE OF TEARS Johnny Mathis (Mercury 72287)
IF YOU SEE MY LOVE Lenny Welch (Cadence 1446)	CLOSE YOUR EYES Arthur Prysock (Old Town 1163)
MORE AND MORE OF YOUR AMOR Nat King Cole (Capitol 5219)	MY KIND OF TOWN Frank Sinatra (Reprise 0279)
ALL MY LOVIN' Hollyridge Strings (Capitol 5207)	HELLO DOLLY Lou Monte (Reprise 0284)
MORE SOUL, THAN SOUL Eddie Harris (Columbia 43075)	LET'S HAVE A PARTY/LITTLE DONNA Rivieras (Riviera 1402)
THE SEVENTH DAWN Henry Jerome (Decca 735)	DEVIL WITH THE BLUE DRESS Shorty Long (Soul 35001)
ONCE UPON A SUMMERTIME Jane Morgan (Colpix 732)	NIGHT TIME IS THE RIGHT TIME/ THAT'S REALLY SOME GOOD Rufus & Carla (Stax 151)
SATIN DOLL Earl Grant (Decca 25638)	MY MAN Walter Gates (Swan 4180)
STARDUST Peter Duchin (Decca 25632)	THE SEVENTH DAWN Ferrante & Teicher (United Artists 31635)
DON'T TAKE YOUR LOVE FROM ME Gloria Lynne (Everest 2044)	CAN'T BUY ME LOVE/HELLO DOLLY Ella Fitzgerald (Verve 10234)
A THING CALLED SADNESS Chuck Howard (Fraternity 923)	SECURITY Otis Redding (Volt 117)
NIGHTINGALE MELODY Johnny Taylor (Galaxy 731)	OH, ROCK MY SOUL Peter, Paul & Mary (Warner Bros. 5442)
RUN LITTLE GIRL Donnie Elbert (Gateway 731)	

## NEW ADDITIONS to TOP 100

63—WALK DON'T RUN '64 Ventures (Dolton 96)	87—IT'S A SIN TO TELL A LIE Tony Bennett (Columbia 43073)
70—PEOPLE SAY Dixie Cups (Red Bird 10-006)	89—I SHOULD HAVE KNOWN BETTER Beatles (Capitol 5222)
72—HOW DO YOU DO IT Gerry & Pacemakers (Laurie 3261)	91—WHAT'S HAPPENING TO ME Dale & Grace (Montel 930)
74—EVERYBODY NEEDS SOMEBODY TO LOVE Solomon Burke (Atlantic 2241)	92—LOOKING FOR LOVE Connie Francis (MGM 13256)
77—WORRY Johnny Tillotson (MGM 13255)	93—IT'S A COTTON CANDY WORLD Jerry Wallace (Mercury 72292)
79—A TEAR FELL Ray Charles (ABC Paramount 10571)	95—HEY GIRL, DON'T BOTHER ME Tams (ABC Paramount 10573)
81—AIN'T SHE SWEET Beatles (Atco 6308)	97—SUNNY Neil Sedaka (RCA Victor 8382)
86—LITTLE LATIN LUPE LU Kingsmen (Wand 157)	98—A TASTE OF HONEY Tony Bennett (Columbia 43073)
	99—IN THE MISTY MOONLIGHT Jerry Wallace (Challenge 59246)



# 30 FT. PACEMAKER DELUXE EXPRESS CRUISER

Perfect For Fishing - Cruising - Family Boat

3 Yrs. Old. Yard Maintained. Captain Maintained. 185 H.P. Chrysler Seavee. Sleeps Four. Custom Fly Bridge. Cost \$1800.00. Built-In Stainless Steel Fishwell. Radio. Depth Finder. Sniffer. Electric Winch. Propane Gas Stove. Two Batteries With Sudsberry Switch. Aqua Pure Filter. Anchor Guide Wheel on Bow. Jacket Life Savers. Four Folding Captain Chairs. Boarding Ladder. Swimming Ladder. Automatic and Manual Bilge Pump. Winter Cover. Fly Bridge Cover. Other Extras. Originally Over \$15,000.00 Asking \$10,000.00.

Box 711 Cash Box, 1780 Broadway, NY 10019



# "JOHNNY LOVES ME"

BY FLORRAINE DARLIN S 105

BILLBOARD ..... Breakout Single  
CASH BOX ..... Looking Ahead  
RECORD WORLD ..... Coming Up  
MUSIC BUSINESS ... Radio Exposure Chart  
MOVING UP ALL CHARTS

CALL YOUR RIC DISTRIB. NOW

On trumpet . . .

# TEDDY MERTENS

C-328

# "THIS IS MY PRAYER"

(Instrumental)

THE BIG ONES ARE ON CAMEO/PARKWAY

The BIG One!

# I SURRENDER DEAR

NINO TEMPO

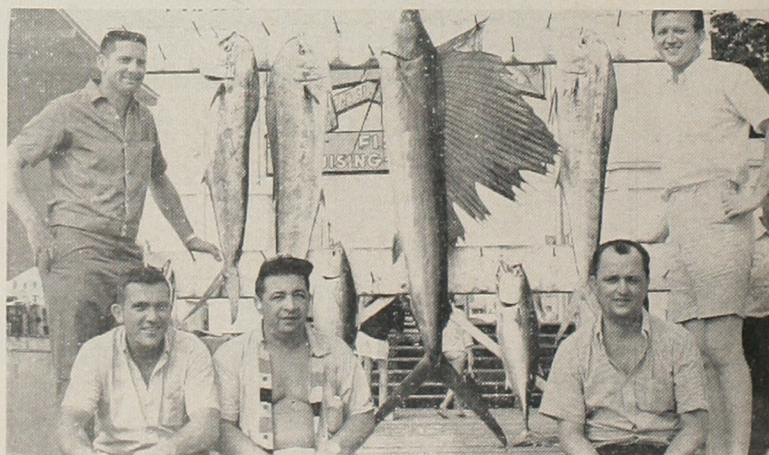
and

APRIL STEVENS

(Atco)

MILLS MUSIC, INC.

## An Armada of Fishermen



MIAMI—It was a good haul for the proud fishermen pictured above after a day of fishing during the recent ARMADA convention. The rod 'n reelers are (standing left to right) Doyal McCollum, manager of Godwin distributors and Don Carroll, promo manager for the distrib. Seated (left to right) are Art Godwin, Pete Garris of Scepter Records and Jimmy Davenport of WFOM in Marietta, Ga.



# THE VILLAGE STOMPERS HAVE ANOTHER SENSATIONAL HIT!

MOZAMBIQUE 5-9702



## HERE'S THE SOUND OF "FOLK - DIXIE - SOUL"

A NEW DIMENSION IN ENTERTAINMENT FROM



© "EPIC", Marca Reg. T.M. PRINTED IN U.S.A.