

William and Mary News



Volume I, Number 15

December 19, 1972

Conference is Homecoming for Physicists

Two graduates of the College were speakers at the final sessions last week of the 1972 meeting of the group on Antennas and Propagation of the Institute of Electrical and Electronic Engineers, a national professional society, and the U.S. National Committee of the Union Radio-Scientifique International.

C. T. Swift, aerospace technologist-physicist micro wave physical electronics for the NASA Langley Research Center, who received a Ph.D. in physics at William and Mary in 1969 and Steven R. Mcsier, who received a bachelor's degree in physics at the College in 1964, were both program speakers.

Frank Hohl, head of the astrophysics section, NASA Langley Research Center who received his doctorate in physics at the College in 1967 and was the first to receive the Ph.D. degree from William and Mary, was the principal speaker at a banquet meeting.

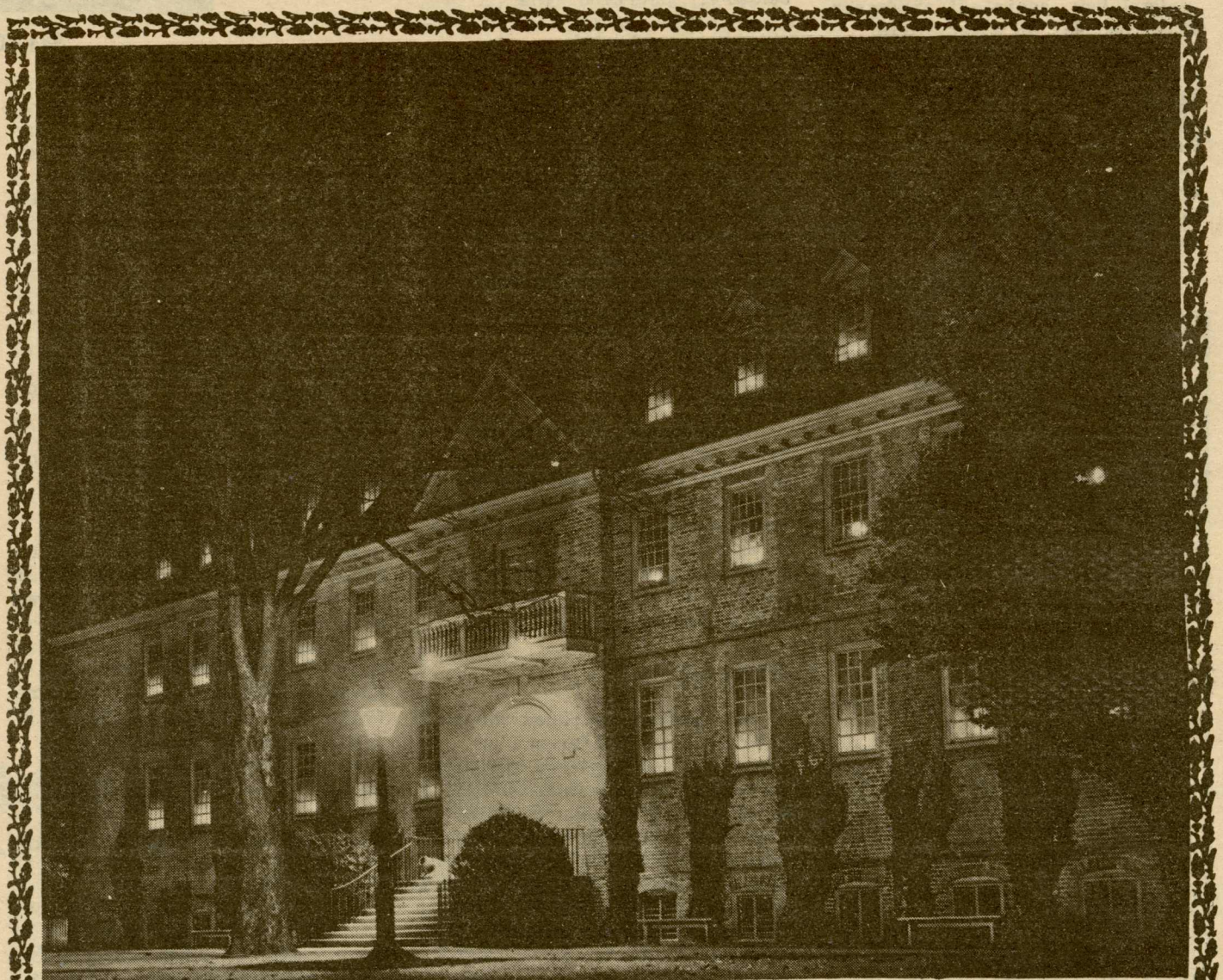
He took as his topic, "Computer Simulation of Galactic Evolution," in which he described his computer simulation of the interaction of stars and star clusters which coagulate to form galaxies.

The meetings provided a "homecoming" for several William and Mary graduates. Seven of the scheduled speakers were associated with the Physics Department of the College.

J. D. Lawrence, Jr., adjunct professor of physics, reviewed some of his work at NASA Langley Research Center in a talk entitled "Review of remote detection of atmospheric pollutants." This work is an effort to detect and identify air pollutants by means of laser light and other methods of detection from a distance.

Two other NASA scientists who presented talks included M. P. McCormick, (Ph.D. 1967) head of the photo-electronic instrumentation section, and S. H. Melfi (Ph.D. 1970) physicist, meteorologist in the environmental space science division.

The Conference was held at the Williamsburg Conference Center and on campus.



The Wren Building

Fires burning brightly in cressets, candles in the windows, and music in the Great Hall make the Open House at the Wren Building one of the more popular events during Williamsburg's Christmas fortnight. The building is the oldest academic building still standing in this country.

Photo courtesy of Colonial Williamsburg

President Elected to Board

President Graves has been elected to the Board of Directors of the Jamestown Corporation.

Assembly Proposal Approved by Four Faculties

To date, the College Assembly proposal has been approved by the faculties of the Marshall-Wythe School of Law, the School of Business Administration, the School of Education, and Arts and Sciences. The proposal has also been approved by the MBA Association.

To Our Reporters

Many thanks for your service. Keep up the good work. We wish to take this opportunity to wish all of you a Merry Christmas and a Prosperous New Year! Ed.



Season's Greetings to everyone

FACULTY NEWS

English

Carl Dolmetsch, chairman, was one of 25 invited scholars who participated in a "working" Conference on Southern Literary Studies at Chapel Hill, N.C., Nov. 30 - Dec. 2, under sponsorship of the Department of English of the University of North Carolina and the National Endowment for the Humanities and the Arts. The purpose of the conference was to survey the current status of studies in Southern literature and to delineate research problems and projects in the field to be accomplished in the next three decades.

Carl Daw, assistant professor, is the editor of a facsimile edition of Johathan Swift's *Miscellanies in Prose and Verse* (1711), published in England this month by The Scolar Press. Mr. Daw was responsible for selecting the copy for reproduction and for writing a detailed critical and bibliographical introduction to the volume.

John W. Conlee, associate professor, has written two articles: "The Meaning of Troilus' Ascension to the Eighth Sphere," *The Chaucer Review*, The Pennsylvania State University Press (University Park and London), Vol. 7, No. 1, pp. 27-36; and "The Pardoner's Symbolic Treasure," *Studies in the Humanities*, Indiana University of Pennsylvania, Indiana, Pa., Vol. 3, No. 1, October, 1972, pp. 1-3.

Fine Arts

Thomas Thorne gave a talk on the work of Albert Pinkham Ryder to a group in Franklin on Wednesday, November 29. He also gave a talk on "Realism Versus Reality in Art" to the Gloucester Chapter of the Virginia Museum of Fine Arts on Thursday, Dec. 7.

Geology

Bruce K. Goodwin participated in an environmental information system workshop sponsored by the Richmond Regional Planning District Commission and the U.S. Soil Conservation Service in Richmond recently. Mr. Goodwin will be responsible for providing the geological data to a land use model based on a 60 square mile area in Henrico and Hanover Counties.

Gerald H. Johnson, associate professor, attended the second biennial meeting of the American Quaternary Association in Miami, Fla., Dec. 1-4. AMQUA is an interdisciplinary association concerned with the study of the glacial and recent ages. Mr. Johnson participated in two field trips, one to the reefs of the northern Florida Keys and the other to the southern Everglades.

Law

Emeric Fischer, professor, conducted a one-day Professional Development Seminar in the Effective Tax Planning Series of American Institute of Certified Public Accountants, on Dec. 14 in Richmond. The subject covered

was: "Problems of the Closely Held Corporation." Topics covered were:

- "Tax Free Incorporation"
- "Thin Incorporation"
- "Multiple Corporations"
- "Subchapter S Corporations"
- "Compensation of the Stockholder - Employee"
- "Dividend Distributions"
- "Accumulated Earnings Tax"
- "Personal Holding Companies"

Dr. William F. Swindler has delivered to his publishers, Bobbs-Merrill Co., the manuscript for the third and final volume of his *Court and Constitution in the 20th Century*. Entitled "The Constitution of the United States: A 20th Century Interpretation," the manuscript consists of a section-by-section commentary on the text of the Constitution, drawn from the principal cases described in the first two volumes, which traced the development of constitutional issues in the Supreme Court from 1889 to the end of the administration of Chief Justice Earl Warren in 1969.

Music

Robin Roark, lecturer in voice, will appear with the Williamsburg Madrigal singers on a special CBS television special, December 24. The broadcast, to be aired nationally at 11:15 p.m., will feature this chamber ensemble in music of Christmas.

Physics

Neil Heiman attended the 18th International Conference on Magnetism and Magnetic Materials in Denver, Colo., Nov. 27-Dec. 2. He presented a paper entitled "Zero Velocity Mössbauer Effect Determination of the Relaxation Time of Magnetically Generated rf Phonons in Fe." The paper was co-authored by two physics graduate students, R. K. Hester and S. T. Weeks, and will be published in the conference proceedings.

STAFF NOTES

Education

Dorothy Bryant, a 1961 ancient languages graduate of William and Mary, has been promoted to assistant registrar effective January 1. Mrs. Bryant is currently secretary in the School of Education.

Psychological Services

Frances Clemons, secretary, will accompany her husband, Sgt. Edward G. Clemons, to Okinawa on December 28. Mrs. Clemons' last day in the Department will be Friday.

Psychology

Betty Davies has been transferred to this Department from the Department of Biology, with a promotion.

CAMPUS PROFILE/Warren J. Green



Mr. Green

Christmas Eve at historic Bruton Parish Church will be televised this year by CBS.

Viewers across the country will enjoy the beauty of the candlelit church, decorated with swags and wreaths of fresh greens and fruits for the holiday season.

The artistic hand behind those decorations belongs to Warren J. Green, director of the Campus Center, who has been directing the "changing of the greens" at Bruton for the past six years.

Decorations are hung just before Christmas Day and remain up through the 12 days of Christmas until Epiphany. Wreaths of apples, berries and other fresh fruit including pineapples, arranged in the style of Della Robbia, will be used along with ropes of greenery.

A regular exhibitor in the Green Spring Garden Club Christmas Homes Tour and Garden Week, Mr. Green has won several first place awards for his arrangements and one year was runner-up for the top tricolor.

CW Initiates Pilot Program for W&M Students

Colonial Williamsburg wishes to initiate a pilot program at the Williamsburg Inn. If successful, the program will be enlarged to include additional food-service facilities.

William and Mary students above the freshman level, both male and female, will be employed as kitchen-utility workers. There will be opportunity for advancement to waiter or waitress trainee, etc.

This employment will be primarily evening work with pleasant, comfortable working conditions and good pay (dressing time and meal included).

For more details and a referral slip, contact the Student Aid Office, Blair Hall 310.

Security

William E. Keadle and Elmer C. Rackley, patrolmen, recently graduated from the Thomas Nelson Academy of Criminal Justice.

Business Office

Mary Andrews, head switchboard operator, will retire at the end of this month. She joined the staff in 1949.

award for the entire show. He is an honorary member of the Williamsburg Garden Club.

A graduate of Amherst College, Mr. Green came to William and Mary in the fall of 1963 after completing 22 years of service in the U.S. Army Artillery. He retired at Fort Monroe with the rank of lieutenant colonel. During World War II he participated in both the Italian campaign and the invasion of southern France.

Prior to service with the Army he worked for the New York Biltmore Hotel and was office manager for the New York office of National Gypsum Company before entering the Army. In 1946 he was director of student activities at Sampson College of the Associated Colleges of Upper New York. As well as being director of the Campus Center, he is currently director of the William and Mary Concert Series which has brought artists of international fame to the campus.

William and Mary News

Volume I, Number 15
December 19, 1972

Published weekly through the Office of Information Services by the College of William and Mary for faculty, staff and students. Produced by the College News Office, 125 Richmond Road, Mrs. Barbara Ball, Director.
Editor:

Mrs. Eleanor R. Anderson
Assistants:
Miss Sharon Kurtz
Mrs. Gay Money
Miss Greyson Pannill
Miss Carolyn Gray

Mailed to addresses of employees as on record at the Payroll Office, James Blair Hall, to which office address changes should be directed.

Christmas Around Campus

Before leaving campus, students were active in a number of community service projects.

Various campus organizations held their traditional parties and exchanged gifts and also went out into the Williamsburg community to help make the holiday season brighter for others.

Chi Omega sorority filled a Christmas basket for a needy family in Williamsburg. Kappa Delta sorority sent presents to its adopted Indian child in Oklahoma and members sent cards and presents to the Crippled Children's Hospital in Richmond.

Kappa Alpha Theta made a donation to the Circle K fund drive for books for underprivileged children. Members also gave food to the Community Christmas Basket Drive and donated gifts to the Jaycee Christmas Gift Shop for Eastern State Hospital.

Kappa Kappa Gamma sorority contributed to the United Fund and the Christmas Seal Drive and members made Christmas stockings for the children's ward at Eastern State Hospital. Pi Beta Phi sorority members made clothing for needy children in the Williamsburg community and contributed to the Circle K book drive.

Phi Mu sorority held a work drive to earn money for Project HOPE. Delta Delta Delta, in conjunction with Kappa Sigma fraternity, held a Christmas party with gifts and refreshments for orphaned children in the area.



Swem Library held a party Tuesday for its 140 student assistants in the Botetourt Gallery on the ground floor of the building. Chief planner was Miss Kathy Shirley, bibliographer in the Acquisitions Department.

The gallery was gaily decorated for the occasion and the "guest of honor," Lord Botetourt, sported a gay accessory for the holiday party.

In William and Mary hall, secretaries feted the coaches at their annual Christmas luncheon Friday. The menu included turkey, roast beef, ham biscuits and Hawaiian meat balls. The meat balls have become a regular item on the holiday luncheon since they were first introduced several years ago by Mrs. Betty Adams. The secretaries presented their bosses with a gift - a new coffee pot.

The Christmas tree in the athletic office is truly a campus decoration. Golden balls and golden garlands on the green tree reflect William and Mary's school colors.

There are many unusual decorations on campus but the Mathematics Department has delved into the academic past for its ornaments. Students of Robert W. Miller's math 105 constructed Grecian

Kappa Alpha fraternity adopted a needy family in the community and donated a Christmas basket. Pi Kappa

Alpha fraternity members were very successful in their recent fund raising drive for the TB society and Pi Lambda Phi fraternity made a donation to a community fund which will provide food for needy families.

Sigma Chi fraternity took the children of the Williamsburg Pre-School for Special Children as its service project and held a party for them with refreshments and gifts.

Circle K, a service unit on campus, held a campus-wide fund drive this fall so that each child who participates in its projects would receive a book this Christmas. They held a party for the elementary school children involved in the tutorial program and one for the pre-school children.

The Williamsburg Area Tutorial Service presented books to the children it works with throughout the year at their annual party. An evening program with a nativity pageant was held this year. All the parents were invited to attend.

The Day Care Center held two children's parties. William and Mary students entertained the children at a party with refreshments and gifts and the Day Care Center held its own party for the children last week.

polyhedra in class, three dimensional figures constructed out of polygons. With the approach of the holiday season they added some red and gold glitter and red balls and donated their work to decorate a corner of the main floor in Jones Hall.

Institute of Early American History and Culture staffers will be feted with a party given by the director, Thaddeus Tate. The group will also contribute baskets for the needy.

The entire James Blair Hall staff and individual departments have scheduled Christmas parties this week. One of the traditions of these parties is carol singing by Dennis Cogle. The party for the entire staff of the building will be held this year in the new staff lounge on the second floor.

Students in Virgil McKenna's Psychology 419 class gave a Christmas party at the Day Care Center for the children they have been working with throughout the semester, and their parents, last Thursday night.

Checks Mailed/Deposited

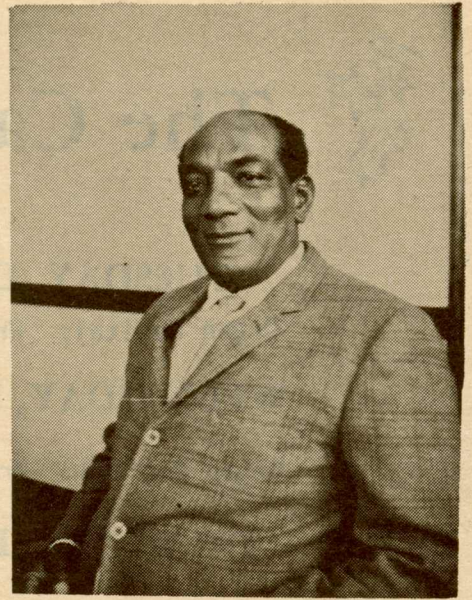
Anyone going on Christmas vacation who wishes to have his check mailed or deposited one time only in Williamsburg, should contact the Payroll Office.

Alton Wynn is Promoted

Effective January 1, Alton Wynn, chauffeur, will assume the position of supervisor for official passenger vehicle transportation. Mr. Wynn's office will be located in the new campus Post Office in Old Dominion Hall.

In his new position, Mr. Wynn will be responsible for the assignment of all state owned cars assigned to the College motor pool. He will work on an independent basis and handle the paper work involving car scheduling heretofore handled by the Purchasing Office, to which he will report daily. Mr. Wynn's new position also will require him to adjust the scheduling of cars on a long-term basis, as well as to do pre-planning for inspections, repairs, and/or replacement.

A member of the William and Mary staff since 1963, Mr. Wynn previously worked as a waiter in the Conference Center of the Williamsburg Lodge for nine years, and, until July of this year, was a driver for the Williamsburg Cab Company.



Mr. Wynn

Mr. Wynn is a native of James City County and a member of Mt. Gilead Baptist Church in Grove. He holds membership in the James City County Lodge #152, A. F. & A. M., the Maliche Chapter of the Royal Arch Masons, and the Knights Templar in Newport News. He has three sons, Raymond, Roger and Horace, and one daughter, Joyce, all of Williamsburg.

BULLETIN

Job Openings

The following positions are open at the College. For information about these positions, apply at the Personnel Office in person, Room 201, James Blair Hall:

Clerk-Typist B

Clerk-Typist C

Clerk-Stenographer B

Clerk C

Individuals who are currently employed by the College will be considered for these positions provided that they have first advised their immediate supervisors in writing of their interest in being considered for other positions. A copy of this correspondence and an acknowledgement by the employee's supervisor must be received in the Personnel Office before the applicant will be considered.

Christmas Holidays

The administrative offices, the plant department (except for those employees required to maintain essential services), and the mail room of the College of William and Mary will be closed on the following dates to allow employees a seasonal holiday:

From noon on Friday, December 22 through Monday, December 25, 1972

and

All day Saturday, December 30 through Monday, January 1, 1973

Regular hours will be observed on Saturday, December 23 and 30, and on Sunday, December 24 and 31, 1972, for those personnel who normally work on Saturday and/or Sunday.

The names of permanent classified employees who are required to work on either December 25 or January 1 should be reported in writing to the Personnel Office in order that they may be credited with compensatory leave. Permanent classified employees who are required to work on any of these days should take compensatory leave earned as soon thereafter as possible in order to avoid excessive leave accumulation. Hourly employees who work on any of these days will be paid at their regular hourly rates.

Higher Social Security Deductions

Beginning with Employee Pay Checks disbursed in January 1973, there will be higher deductions for Social Security than were withheld in 1972. Employees will contribute 5.85 percent on the first \$10,800 of their Gross Annual Salary, instead of 5.2 percent on the first \$9,000 as was done in 1972.



The Calendar

TUESDAY, DECEMBER 19

Organ Recital: Wren Chapel, 11 a.m.

WEDNESDAY, DECEMBER 20

Organ Recital: Wren Chapel, 11 a.m.

THURSDAY, DECEMBER 21

Organ Recital: Wren Chapel, 11 a.m.

FRIDAY, DECEMBER 22

Organ Recital: Wren Chapel, 11 a.m.

SATURDAY, DECEMBER 23

no activities scheduled

SUNDAY, DECEMBER 24

no activities scheduled

MONDAY, DECEMBER 25

Christmas

TUESDAY, DECEMBER 26

Organ Recital: Wren Chapel, 11 a.m.

CW: Illumination of Wren Building and Courtyard.
Open House, Wren Great Hall, 6 p.m.



A Magic Touch?

Chef Reveals Special Recipe

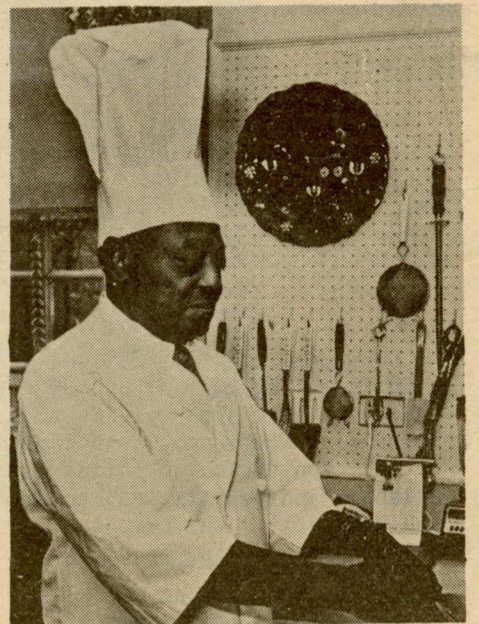
Chef Fred Crawford must have a magic touch - his portfolio is filled with letters praising his cooking.

His delicacies have delighted an impressive list of dignitaries. The late Presidents Roosevelt and Eisenhower, President Harry Truman, Queen Elizabeth and Prince Phillip of England, and the late Sir Winston Churchill and Lady Churchill have all feasted upon his southern dishes.

Chef Crawford, who prepares meals on special occasions for President and Mrs. Graves, began his cooking career when he was 16 and served as a chef with the Ship Grills Corporation in New York for seven years prior to coming to the Williamsburg Inn in 1937.

In 1947 he was awarded the title of Master Chef of the Commonwealth of Virginia and in 1962 he was elected outstanding chef of the year by the Quando Mandacomus Fraternity of Epicures. He retired the first of this year.

Does he have a secret touch? "I have certain methods that make me an above average chef, and I



Mr. Crawford

never trust my memory to remember a recipe. Everything is kept on file," he said.

At home he helps his wife, Magnolia, who is employed at the Information Center, with the cooking.

Here is one of Chef Crawford's special holiday recipes:

Carrot Souffle

2 lbs. med.-size carrots	3 eggs
3 1/3 tbs. sugar	2 tsp. salt
2 1/2 tbs. melted butter, unsalted	1 1/3 tsp. cornstarch
13 tbs. milk	13 tbs. cream, 20%

Cover the carrots with water and cook until tender. Let cool slightly, peel and put through food chopper or sieve. Beat the eggs, yolks and whites separately, until light and add to the carrot mixture, together with the sugar, salt and melted butter. Mix cornstarch with a little milk to make a paste and add to above mixture. Lastly, stir in the milk and cream and mix well. Place in a buttered baking dish and set in pan of hot water to bake. Bake in a 350-degree oven for 45 minutes or until light brown. Serve hot. Yields 10 portions.

CLASSIFIED ADVERTISEMENTS

For Sale

Musical Instruments.

'59 Gibson SG Special electric guitar, \$100. '56 Wurlitzer electric piano, \$60. '68 Fender Bassman Amp pre-CBS, \$200. Phone 229-5350.

Persian Lamb fur coat, size 16 and fur hat, \$75. Gray wool coat, size 16, \$30. Blue cashmere coat, size 12, \$50. Black London Fog raincoat with winter liner, worn once, 42 regular, \$45. Call 229-4617.

2 Early American chairs. Dark maple wood frames with leather upholstery in brown. Good condition. Easler - Call 229-6623 after 5 p.m.

1971 VW Convertible. Canary Yellow, radio, low mileage. \$2,000 or best offer.

1970 Pontiac Lemans Sport. A/C, P/S, P/B (disc), A/T, vinyl roof; new steel belted radial tires. \$2,500 or best offer. Call 877-1470.

'72 Pontiac Ventura, 12,000 miles, AC, PS, A/T, V8, radio, 4-door, exc. cond. 229-1272.

Dodge Dart 1966 - A/T, P/S, 4 doors, AM radio, good condition. \$400. Call 229-8855 after 2 p.m.

1 Winston Guitar, \$10.
1 Silvertone Guitar, \$5. 1 Lady Sunbeam Mist & Sauna Hair Dryer, \$25. 1 16' Arrowcraft fiberglass canoe, \$150. 1 Colonial wooden gun rack; holds 3 guns plus a locked ammunition drawer, \$20. Please call G. R. Thomas at 229-2032 after 5:30 p.m. weekdays and weekends.

New, unused Persian Rugs. Two beautiful handwoven imports. Tags still attached. Significant saving from retail prices. Superb Christmas gifts. 4' x 2'8" Bokhara. 3'6" x 2' Meshkin. Both predominantly deep red. Call 229-8697.

Wanted

The Department of Religion would like to locate an apartment or home for visiting professor and family for period from June 18 to July 20. If necessary, beginning date of rental can start later than beginning of summer session. Please contact Mrs. Hooker or Miss Brecht at Ext. 384.

Found

An Economics notebook has been found at the Infirmary. It may be claimed there, or identified by calling Ext. 386.

College of William and Mary
Williamsburg, Virginia 23185

A key ring with three keys attached. Found in Phi Beta Kappa parking lot Dec. 5. Keys may be claimed at College News Office, 125 Richmond Road, between 8 a.m. and 5 p.m.

For Rent

For rent beginning January: Need someone to take on lease. 2 bedroom apartment. New, completely modern kitchen, central air conditioning and heat, cable tv, pool. \$188 per mo. inc. utilities. Phone Ken Petzinger, 220-0641 (home).

Non-Profit
Organization
U. S. Postage
PAID
Williamsburg
Virginia
Permit No. 26