

William and Mary News



Volume I, Number 35

May 22, 1973

Board of Visitors Meets May 18-19

The Board of Visitors' quarterly meeting was held Friday and Saturday, May 18-19 in the Rare Books Room of the Swem Library. The meeting was preceded by Board committee sessions on matters pertaining to academic affairs, development, buildings and grounds, finance, student affairs, and honorary degrees, which were held Friday morning in the Campus Center. Members of the Board and special guests honored four retirees at functions Friday: Dr. George Crawford, Physics; Dr. Charles Marsh, Business Administration; Dr. Birdena Donaldson, Dean of Women; and J. Wilfred Lambert, Vice President for Student Affairs.

Consistent with the State's Freedom of Information Act, with new amendments taking effect June 1, the Board made announcements of applicable actions at a press conference immediately following adjournment. For details of Board action, see pages 4, 5, 6 and 7.

Approval was given the revised and updated Statement on Academic Freedom, Tenure and Due Process Procedures endorsed by the Faculties earlier this spring for inclusion in the new *Faculty Handbook*.

The Board accepted a statement, "Policies Governing the Admission of Undergraduate Students," presented to it by the Admissions Policy Committee in place of one adopted in 1963.

A number of faculty promotions, leaves of absence, resignations, and appointments were approved. Among administrative appointments approved were those of Frank L. Field, Associate Dean of Students for Career Planning; Lynn S. Schulz, Associate Dean of Students for Student Development; Morris Wray, Associate Dean of Students for Residence Hall Life; Jerry Van Voorhis, Assistant to the President; Miriam W. Cardi, Staff Clinical Psychologist for the Center for Psychological Services; and Dr. Franklin A. Munsey, Assistant Director of the Student Health Services.

The Board approved revised By-Laws of the Marshall-Wythe School of Law, to reflect changes in the College's administrative structure.

It adopted as College policy the Virginia Equal Employment Opportunity Plan promulgated on January 1, 1973 by the Governor.

The Board asked that appropriate steps be taken to have legislation introduced in 1974 to restore a requirement that appointments of members of the Board by the Governor be confirmed by the General Assembly. The requirement, although traditionally observed, had inadvertently been omitted from the Code

of Virginia in a 1962 revision of Section 23-41, which applies to the College. The Boards of other State-supported colleges and universities operate under such a procedure.

The Board tabled for further study and consultation with the drafting group a Revised Statement of Rights and Responsibilities which had been ratified by students and faculty earlier this year. The statement would replace one adopted in 1968.

The Board approved 1973-74 operating budgets for expenditure of athletic and recreational fees, the Men's Athletic Association and the Women's Athletic Association.

The Board approved a number of actions affecting Richard Bland and Christopher Newport Colleges, including retirement policies conforming to William and Mary's at both institutions. It approved establishment of a President's Advisory Council for Christopher Newport.

Members reviewed the report of the College's Bicentennial Planning Committee, submitted to President Graves.

The Board agreed to hold a special meeting July 16 to consider the College's biennial budget request. Its next regular meeting was scheduled for September 28-29. Other future meetings are scheduled for November 16-17, 1973; January 11-12 and May 10-11, 1974.

S. Dean Olson Named Director of Publications

S. Dean Olson, assistant to the President, has been appointed the College's first director of publications, effective Sept. 1.

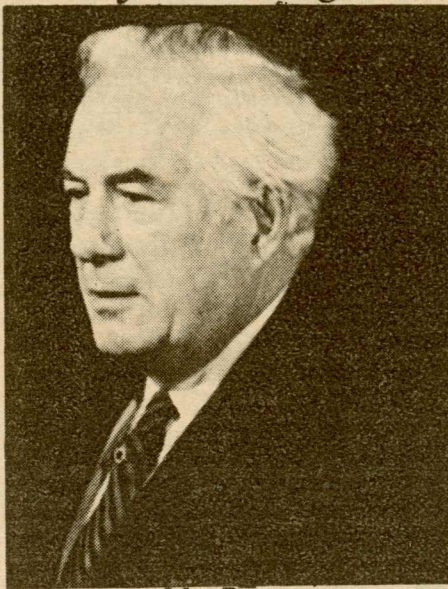
Mr. Olson will be succeeded by Jerry A. Van Voorhis, a 1963 alumnus of the College, who is a former administrative assistant to the President, and now a candidate for the Ph.D. degree at Johns Hopkins University.

Mr. Van Voorhis' appointment, also effective Sept. 1, was approved by the Board at its May 19 meeting.

Establishment of a centrally managed publications program as part of the Office of Information Services had been under study for more than two years. Mr. Olson's appointment will permit carrying out the proposal.

The director of publications will have the responsibility to supervise final editing, design and production details of all non-student publications at the College to insure their appropriateness and effectiveness, as well as to maximize economy. Mr. Olson will also prepare certain original articles and manuscripts for use in College and non-College publications.

Chief Justice Burger is Commencement Speaker



Mr. Burger

The Honorable Warren E. Burger, Chief Justice of the United States, will make the commencement address at the College, June 3.

Carter O. Lowance to Head Gubernatorial Campaign

Carter O. Lowance, Executive Vice President of the College, will become state director of former Democratic Governor Mills E. Godwin, Jr.'s gubernatorial campaign this year. The announcement was made last Saturday by Mr. Godwin.

Mr. Lowance, who has served as executive assistant to six Virginia Governors and who was commissioner of administration and executive assistant during Mr. Godwin's administration from 1966 to 1970, said he would take a leave of absence from the College to direct the campaign.

Exercises will be held at 3 p.m. in the historic Wren Yard.

The program of events for commencement will begin with ROTC commissioning ceremonies which will be held Saturday, June 2, at 11 a.m. in Phi Beta Kappa Hall.

President and Mrs. Thomas A. Graves, Jr., will be hosts at a reception for graduating students, their families and friends, Saturday afternoon in the Wren Yard and President's House from 4-5:30 p.m.

Dinner for the students and their guests will be served in the Commons Saturday from 5:30-7:30 p.m. at a cost of \$2.75 per person.

The Peninsula Symphony Orchestra will give a concert in Phi Beta Kappa Hall at 8:30 p.m., Saturday.

The Board of Visitors granted Mr. Lowance's request for a leave of absence at its meeting last Saturday.

"No one has contributed more to the philosophy and stability of Virginia's government than has Carter Lowance," Mr. Godwin said in making the announcement. "His impartiality in serving Virginia governors is recognized by men and women of all political persuasions."

Mr. Lowance entered state service in 1947 and served as an aide to Govs. William M. Tuck, John S. Battle, Thomas B. Stanley, J. Lindsay Almond, Jr. and Albertis S. Harrison, Jr., in addition to Mr. Godwin.

Richard Bland College

Acting President Appointed

Cornelis Laban, 39, has been named Acting President of Richard Bland College in Petersburg from September 1 to August 31, 1974. He succeeds Col. James M. Carson who will retire September 1.

Mr. Laban, associate professor and chairman of the Department of Biology at Richard Bland College, is a native of Rotterdam, The Netherlands. He received a bachelor's and master's degree from Western Michigan University, 1960, 1962; and a Ph.D. degree from Oregon State University, 1966.

From 1966-69 he received a post-doctoral research grant from the National Institutes of Health and undertook his work at Bowling Green University.

Announcement of Laban's appointment was made at noon on Monday by President Thomas A. Graves, Jr., and George R. Healy, Vice President for Academic Affairs, at a meeting of the Richard Bland College faculty.

Education

S. Stuart Flanagan has been elected president of the newly formed Peninsula Council of Mathematics which held its organizational meeting on campus, Monday, May 14.

The new organization is an affiliate of the National Council of Teachers of Mathematics and is one of two geographical units which have been formed to replace the Tidewater Council of Mathematics.

Government

Chonghan Kim has been elected to the Board of Directors of the National Collegiate Conference Association, Inc., which sponsors the National Model United Nations.

As one of two faculty advisers, Mr. Kim will meet in New York in June with the planning committee for the 1974 Model U.N.

Mr. Kim, who served with the Korean Mission to the United Nations, 1961-63, attended the Model United Nations session this spring with the William and Mary student delegation which included Celia Williams, Barbara Rambo, Christine Howlett, Steve Hopkins and Bruce Cleland.

The College delegation represented Kenya at the Model U.N. The delegation introduced a resolution opposing the policy of apartheid in South Africa which was accepted on the agenda and passed by a substantial majority.

Physics

The following paper has been published:

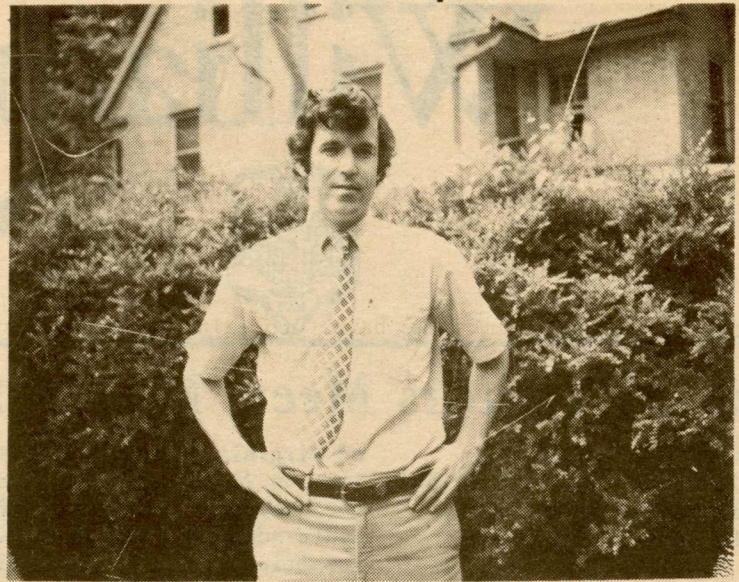
"Linearized Theory of Inhomogeneous Multiple 'Water Bag,'" H. L. Berk. *Journal of Plasma Physics* 9, 325 (1973).

John Delos, assistant professor, attended an ARPA meeting in Washington, D.C., dealing with the atmospheric chemistry of ozone, on May 9. He also presented a seminar entitled "Potential Curve Crossings in Molecular Collisions," at the University of Chicago on May 14.

Modern Languages

R. Merritt Cox, associate professor, attended the meeting of the American Society for Eighteenth-Century Studies at McMaster University in Hamilton, Ontario, from May 5-9. He participated in a panel discussion on Spanish eighteenth-century studies. Mr. Cox is also the Spanish editor for the Society's bibliography that appears annually in the *Philological Quarterly*.

The manuscript of Mr. Cox's third book (on the Spanish poet Juan Meléndez Valdés) has just been accepted for publication (Twayne Publishers, New York) and should go to press within a year.



In his new position as president of the Student Bar Association for the next academic year, James B. Murray, Jr., hopes to "perpetuate and improve the Association as a law school service organization - one that will provide a lot of activities unique to a legal education."

The SBA is not primarily a student government, in the undergraduate sense, he stated. "It is a service organization which is responsible for the vast majority of student activities at the law school."

One of the most critical issues confronted by the SBA is funding. Due to lack of financial stability, the organization has not been readily able to provide all the services desired, according to Murray.

"Under the current arrangement, every law student pays a \$15 student activities fee with his tuition, and this money is allocated to student activities by the Board of Student Affairs. Only 40 per cent of the money contributed by the law students is allocated to the SBA and law school activities. The other 60 per cent is spent on undergraduate concerns that are of little or no value to the law students who are helping to pay for them. There is some reliable indication that the amount of the BSA allocation to the Student Bar Association will be noticeably increased next year.

"More importantly, the resulting lack of funds available for law school activities necessitates the SBA collecting dues to meet its budget. These dues are voluntary.

"Many students are reluctant to pay the dues and the result is that about 60 per cent of the law students end up footing the bill for a wide array of services that benefit all the students - the law school newspaper, a student lounge, a minority recruitment program, sponsorship of student groups such as the Environmental Law group and the Women Law Students Association, a speakers program (open to the entire College), and the presentation of an orientation program for incoming students.

"In the past the SBA has also provided financial support for programs which yield academic credit for the participants, such as Moot Court and the Post Conviction Assistance Project and programs which do much to enhance William and Mary's national and state reputation, such as the Intercollegiate Moot Court Tournament and Law Day," said Murray.

"Each year the range and scope of these services broadens and further improvements of these programs is my goal," Murray concluded.

Murray chaired the Law Day 1972, which won William and Mary first place in national competition and acclaim as the "best in the nation" by the Law Student Division of the American Bar Association. He is the outgoing editor-in-chief of the *Amicus Curiae*, the law school newspaper, and he is a past director of the law school's minority recruitment program.

Murray received a B.A. in sociology from the University of Virginia in 1968, after which he taught and coached for three years at Landon School in Bethesda, Md.

A member of Omicron Delta Kappa, he was the winner of the Environmental Law Essay Contest at William and Mary sponsored by the American Trial Lawyers Association.

He is a rising third year student in the law school and is married to the former Bruce Randolph of Charlottesville, an employee of the Williamsburg Community Hospital.

His future plans include a small town general law practice in Virginia.

Office of Development

National Portrait Gallery Training Fellowship

Two one-year \$7500 Training Fellowships are available to students who have completed or will complete a Master's Degree program or its equivalent in History by August 31, 1973. Internes will participate in a museum program designed to acquaint them with the uses of objects such as historical documents and to expose them to the procedures and techniques required for museum-related careers. The program will be conducted at the National Portrait Gallery in Washington, D.C., from September 4, 1973 to August 31, 1974, under the supervision of the Director and the Historian of the Gallery.

Deadline: July 16, 1973

Notification: by August 3, 1973

For further details call Mrs. Neiman, Development Office, Ext. 517.

American Revolution Bicentennial

The National Science Foundation and the National Endowment for the Humanities each has announced it will support special projects connected with the nation's 200th anniversary celebration in 1976. Each received special grants of \$200,000 for the projects from the American Revolution Bicentennial Commission (ARBC). The National Endowment for the Arts received a similar amount. Funds awarded under the programs must be matched with non-Federal funds.

NSF said its programs will encourage activities which give special consideration to youth, minority or ethnic groups, involve local, state or regional leadership and, where possible, have a continuing value and use after 1976. NSF said examples of science projects might include the planning and development of exhibits, scholarly works, motion picture and television presentations, radio broadcasts, conferences, colloquia, seminars, curricular support activities at levels of education including adult programs, and research which may serve the objectives of the program.

NEH said grants under its special program "will be extensions of its customary activities and will be conducted through the usual grant-making processes of the endowment." It said it will encourage applications for projects "which bring the humanities to bear on serious study of the American experience from colonial times to the present, with particular--but not exclusive--emphasis on the period surrounding the founding of the nation." It added: "Projects must have national or regional significance and should be operational during or before 1976. Grant amounts must be matched dollar-for-dollar from non-Federal sources, and individual awards will not normally exceed \$25,000.

William and Mary News

Volume I, Number 35

May 22, 1973

Published weekly through the Office of Information Services by the College of William and Mary for faculty, staff and students. Produced by the College News Office, 125 Richmond Road, Mrs. Barbara Ball, Director. Editor:

Mrs. Eleanor R. Anderson

Assistants:

Miss Sharon Kurtz

Mrs. Gay Money

Miss Carolyn Gray

Mailed to addresses of employees as on record at the Payroll Office, James Blair Hall, to which office address changes should be directed.

Official Memoranda

College Housing Rent Increases

During this year, the Business Affairs staff has made a concerted effort to upgrade the level of maintenance of the College's housing for faculty and staff. The program was initiated by Dennis Cogle, who made a survey of all housing and developed the list of correction items for each house and apartment. Ervin Farmer and the Buildings and Grounds staff then followed up to make the corrections.

In making these improvements, we have become increasingly aware that the rents for College housing have been unrealistically low. After noting the cost of this new maintenance and improvement program, it became clear that we should undertake a study by a professional appraiser in order to determine the commercial equivalent of rents for comparable housing. It is our understanding that no such appraisal had been made in the past fifteen years or more.

The study was completed by the end of March and it showed that rentals for College housing were below the market from 17% to over 80%. (College rents include all utilities except telephone.) A plan for adjusting the level of rents was then developed in consultation with the Faculty Housing Committee.

This Committee's first recommendation for housing regulations was that the underlying philosophy in the administration of College housing should be to afford temporary assistance for new faculty members rather than to provide fringe benefits for the faculty as a whole. The object of College housing, in the view of the Committee, was to help newcomers rather than to subsidize housing for faculty in general. Rents will be adjusted upward in two annual steps during a catch-up period. Even then, the new schedule will be 17% lower than equivalent commercial rents. The increases have not been made across the board but separately on the basis of the desirability of the housing.

All tenants whose leases were due to expire this year have been mailed a new lease with a letter of explanation on the need for the increase. Of course not all the leases were up for renewal this year; only about half could be raised for next year because of the two-year term of the lease. All leases in the future, however, will be for one year at a time. Even with this increase in revenue, College housing will still have a deficit of over \$45,000 for 1973-74. Hopefully, when the increases have been made for 1974-75 and 1975-76, it will be possible to offset the deficit within these restructured rents.

We are looking for ways to increase the supply of College housing at moderate rates, for we realize such housing is scarce in Williamsburg. We will also continue to take better care of the housing we already have.

William J. Carter
Vice President for
Business Affairs

To: All Deans and Department Heads

College Office Furniture and Equipment Pool

In order to utilize effectively College office furniture and equipment, a supply pool of usable items not currently in use, i.e. desks, chairs, tables, book cases, filing cabinets and other office furnishings and equipment, will be established under the direction of the Department of Purchases and Stores.

An inventory of such items not presently in use is needed in order to get this program started. We would greatly appreciate receiving this information from each department head. Forms for the submission of such data are available at the College Warehouse.

Departments which require additional or replacement furniture should submit their requests on the regular warehouse requisition forms (W&M Form 57C) to the Department of Purchases and Stores. If no satisfactory item can be supplied from the pool, the Purchasing Office will then take steps to procure new articles, provided the departmental budget can support the requisition.

Under this system the charge for items supplied from the pool will be minimal to cover the handling costs and/or the cost of refinishing when necessary.

It is our plan to make this use of an Office Furniture and Equipment Pool a continuing procedure to insure that the College makes the most effective use of its existing furniture and equipment without resorting to needless duplication of present unused inventories, which will be collected and stored in Trinkle Hall until reassignment is made.

William T. Allen
Director of Department of
Purchases and Stores

Personnel Bulletin

Job Openings

The following positions are open at the College. For information about these positions, apply at the Personnel Office in person, Room 201, James Blair Hall:

Clerk-Typist A

Clerk-Typist B

Clerk-Stenographer C - position located at VARC

Clerk-Stenographer B

Individuals who are currently employed by the College will be considered for these positions provided that they have first advised their immediate supervisors in writing of their interest in being considered for other positions. A copy of this correspondence and an acknowledgement by the employee's supervisor must be received in the Personnel Office before the applicant will be considered. The College of William and Mary is an Equal Opportunity Employer. Qualified women and minority applicants are encouraged to apply.

Memorial Day

In accordance with the holiday schedule as revised by the 1970 General Assembly, Memorial Day falls on Monday, May 28, 1973.

This holiday should be given, as far as practicable, to members of each department. It is recognized that certain services must be maintained in the various departments, but these services should be furnished on the holiday by a minimum number of employees of the department.

A leave slip should be submitted to the Personnel Office for any permanent classified employee who takes leave on this holiday. Permanent classified employees who are required to work on this holiday should take the compensatory leave earned as soon thereafter as possible in order to avoid leave accumulation. Hourly employees who work on this holiday will be paid at their regular hourly rates.

Blue Cross/Blue Shield Enrollment Period

May is enrollment month for the Blue Cross/Blue Shield Insurance Plan for State Employees. This is the time when eligible State employees who are not presently enrolled in the Plan can join and when those already enrolled can change their coverage. Employees who are eligible for the State Plans but who are not interested in taking coverage or changing their present policy need not contact the payroll office. Employees wishing to change or take coverage must have their applications completed and in the payroll office not later than May 31, 1973. Those who do not have their revised applications in the payroll office by that date will not be eligible until May, 1974. New or changed coverage will become effective July 1, 1973. Payroll deductions will become effective with the June 22, 1973 paycheck.

Progress Made on College Playground



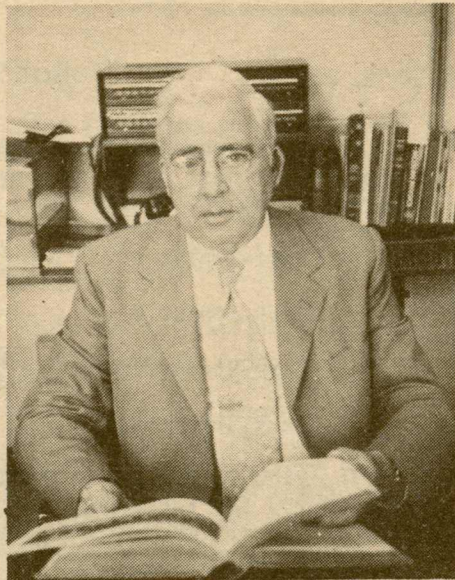
Lara Miller, Robin Katzke and David Smith (l-r) make good use of the sandbox in the playground on Richmond Road for faculty and staff children. The playground, which was started by a neighborhood group, has received support from many sectors of the College community including the College Women's Club Service Organization, fraternity and sorority members. The area provided by the College for the playground is a shaded, fenced-in spot with plenty of play area for youngsters and benches for mothers to chat while they supervise the children. Future plans call for more equipment and decorative plantings to screen the playground.

Photo by Mary Goetz
(Courtesy The Daily Press)

Four Honored on Retirement



J. Wilfred Lambert



George W. Crawford



Birdena E. Donaldson



Charles F. Marsh

The Board of Visitors honored four retirees at a luncheon Friday in the Sit 'N Bull Room of the Campus Center. Each received an official William and Mary Chair. (Resolutions by the Board on the retirement of the four are printed below.)

J. Wilfred Lambert

J. Wilfred Lambert entered the College as a freshman in September, 1924 and with but a few absences of relatively short duration, has been a member of the William and Mary community ever since. A native of Ryan, in Loudoun County, he began his association with William and Mary at the urging of then-Governor Westmoreland Davis. He earned his A.B. degree in English a year ahead of schedule, and then undertook graduate work in psychology at The Johns Hopkins University. President J. A. C. Chandler persuaded him to return to William and Mary in January, 1931, as Instructor in Psychology. He returned two years later to Johns Hopkins to complete course work for his Master's degree, and resumed teaching at William and Mary in 1934.

President John Stewart Bryan immediately handed Mr. Lambert several administrative responsibilities and appointed him Dean of Freshmen. Since that time, he has handled at one time or another virtually every aspect of student affairs administration, including admissions. He was successively Dean of Men, Dean of Students, Registrar, and, since January, 1970, Vice President for Student Affairs. Throughout his professional association with the College, he has continued to teach in the Department of Psychology and earned the rank of Professor in 1959.

Few who have been a part of the College community in the last 40 or more years have not come to know "Dean" Lambert and to hold him in great respect. He, in turn, has nearly instant recall of important information and personal recollections of most of these associations and students. Mr. Lambert is also an acknowledged authority on ancient and modern traditions of the College. It is on the history of the College that he is the least taciturn.

The 1973 Thomas Jefferson Award appropriately recognized "Dean" Lambert as a "man for all seasons" and a gentleman in the tradition of Jefferson.

RESOLVED, That the Board of Visitors takes cognizance with deep regret of the forthcoming retirement of J. Wilfred Lambert as Vice President for Student Affairs and expresses its lasting appreciation for his outstanding service to the College of William and Mary and its best wishes for the relaxation and enjoyment to which he is entitled in the status of Vice President for Student Affairs and Professor of Psychology, Emeritus, effective September 1, 1973, and

RESOLVED FURTHER, That a copy of this Resolution be spread on the Minutes of this Board and a copy be transmitted to Mr. Lambert.

George W. Crawford

George W. Crawford was appointed Associate Professor of Physics in 1960 after many years of experience as a teacher of Physics in secondary schools and colleges. He was promoted to Professor of Physics in 1972.

Throughout his career he has been primarily concerned with teaching Physics to undergraduates and has maintained a special interest in the training of prospective high school teachers. For many years he has directed the Annual Science Contest for high school seniors.

BE IT RESOLVED, That the Board of Visitors acknowledges with deep regret the retirement of George W. Crawford and gratefully approves a change in his status from Professor of Physics to Professor of Physics, Emeritus, effective at the close of the 1972-73 session, and

BE IT FURTHER RESOLVED, That a copy of this Resolution be spread on the Minutes of the Board and a copy be transmitted to Professor Crawford.

Birdena E. Donaldson

Dr. Birdena E. Donaldson was appointed Dean of Women and Associate Professor of History and joined the faculty and staff of the College in September, 1956 as the sixth person to hold the position of Dean of Women. She received her Bachelor of Arts degree at Franklin College in 1926, her Master of Arts degree from Northwestern University in 1927, and the Doctor of Education from Teachers College of Columbia University in 1952. She attended summer courses at the University of Wisconsin and at Oxford University.

In her 17 years at William and Mary she has been primarily responsible for the personal and academic counseling of women students. She has been a member of the Committee on Academic Status, the Committee on Discipline, and the Committee on Prizes and Awards. She has participated in the activities of Mortar Board, the National Association of Women Deans and Counselors, and the Association of American University Women.

Through her efforts and interest a chapter of the national freshman honor society, Alpha Lambda Delta, was established at William and Mary and has become an important academic influence.

Her broad interest in the activities and affairs of the women students at William and Mary has been manifested in all facets of their academic life and has contributed notably to their personal and academic achievements.

Charles F. Marsh

Charles F. Marsh has had two distinguished careers at the College, between which his great abilities as administrator and educator were applied at Wofford College as its President. He became Associate Professor at William and Mary in 1930, full Professor in 1933, and Chancellor Professor in 1950. From 1952 until 1958, Dr. Marsh was Dean of the Faculty, leaving to accept the Presidency at Wofford. He returned as Lecturer in Business Administration in 1968, after being appointed President Emeritus at Wofford.

An alumnus of Lawrence College, with advanced degrees from the University of Illinois and the honorary LL.D. degree from Furman University, Dr. Marsh has been recognized for his scholarly and civic achievements on numerous occasions. He is a member of Phi Beta Kappa and Omicron Delta Kappa, and is a past Chairman of the Commission on Colleges of the Southern Association of Colleges and Schools. Locally, he has served on the City Planning Commission and City Council, and has been President of the Chamber of Commerce and Director of the Community Fund. He has been a dedicated participant and leader in the affairs of the Williamsburg Methodist Church and the Virginia United Methodist Conference, as well as a participant in the Church's national commissions on church union and ecumenical affairs. His expertise in government-business relations has been employed in a variety of federal, State and local government activities.

Dr. Marsh's careers at William and Mary have earned for him a reputation of the highest calibre. He is an effective teacher, able administrator and wise counsellor, with a sincere interest in the people with whom he comes in contact.

RESOLVED, That the Board of Visitors regrettably approves the designation of Dr. Charles F. Marsh as Lecturer Emeritus, effective at the close of the 1973-73 academic year, and expresses its sincere appreciation for his loyal and constructive service to the College.

RESOLVED FURTHER, That this resolution be spread on the Minutes of the Board and a copy be presented to Dr. Marsh.

Action by Board of Visitors

Promotions

The following promotions have been approved by the Board of Visitors:

ASSOCIATE PROFESSOR to PROFESSOR: Garnett R. Brooks, Jr., biology; Morton Eckhause, physics; Jack D. Edwards, government; Herbert Friedman and Virgil V. McKenna, psychology; and Robert E. Scott, law.

ASSISTANT PROFESSOR to ASSOCIATE PROFESSOR: Samuel H. Baker, III, economics; Donald J. Baxter, government; James DeWitt Cowles and S. Stuart Flanagan, School of Education; Ching Seng Fang, Albert Y. Kuo and Frank O. Perkins, School of Marine Science; David L. Holmes, Jr., religion; Robert P. Maccubbin and Robert J. Scholnick, English; Kelly G. Shaver, psychology; and James E. Smith, School of Business Administration.

INSTRUCTOR to ASSISTANT PROFESSOR: Ruth A. Beck, biology; Thomas L. Heacox, Terry L. Meyers and Helen M. Pike, English; and Clifford H. Pence, Jr., theatre and speech.

Faculty Appointments

Faculty appointments to fill existing vacancies include the following:

Stephen B. Brush, assistant professor of anthropology. A.B., University of California, Berkeley, 1965; M.A., University of Wisconsin, Madison, 1970; Ph.D. candidate, University of Wisconsin.

Craig N. Canning, assistant professor of history. A.B., University of Utah, 1965; M.A., Stanford University, 1968; Ph.D. candidate, Stanford University.

Michael Castagna, assistant professor of marine science. B.S., Florida State University, 1953; M.S., Florida State University, 1955.

Norman J. Fashing, assistant professor of biology. A.B., 1965, M.A., 1967, Chico State College; Ph.D. candidate, University of Kansas, Lawrence. Instructor, Chico State College, 1966-67.

Don E. Fehrenbacher, James Pinckney Harrison Professor of History. A.B., Cornell College, 1946; M.A., Ph.D., University of Chicago, 1948, 1951; M.A., Oxford University, 1967. Assistant professor, Coe College, 1949-53; assistant professor, associate professor, professor, Stanford University, 1953-; Harmsworth Professor, Oxford University, 1967-68.

Frank L. Field, associate dean of students for career planning. A.B., 1958, Ed.M., 1961, Ed.D., 1963, Harvard University.

David H. Finfter, assistant professor of economics. B.S., Loyola College, Baltimore, 1969; M.A., University of Pittsburgh, 1972; Ph.D. candidate, University of Pittsburgh.

Thomas M. Finn, associate professor and chairman, department of religion. A.B., M.A., St. Paul's College, 1956, 1958; Th.L., Th.D., The Catholic University of America, 1960, 1965. Assistant professor, St. Paul's College, 1965-66; assistant professor, Syracuse University, 1967-69; editor-in-chief, G. K. Hall and Company, 1969-.

Christian Fronsdal, visiting professor of physics, first semester, 1973-74. B.S., University of Bergen, 1953; Ph.D., University of California, Los Angeles, 1957. Assistant professor, associate professor, professor, University of California, Los Angeles, 1961-; Senior Scientist, International Centre for Theoretical Physics, Trieste, 1964-72.

Trudier Harris, assistant professor of English. A.B., Stillman College, 1969; M.A., Ph.D., Ohio State University, 1972, 1973.

John P. Jacobson, instructor in marine science. B.S., Worcester Polytechnic Institute, 1965; M.S., University of Massachusetts, 1973.

Kevin P. Kelly, assistant professor of history and Fellow, The Institute of Early American History and Culture. A.B., M.A., Michigan State University, 1965, 1966; Ph.D., University of Washington, 1972.

Mary Anne Kreutzer, assistant professor of psychology. A.B., Simon Fraser University, Canada, 1969; Ph.D. candidate, University of Minnesota.

Irma Lang, visiting professor of law. B.A., Ohio State University, 1948; M.A., 1950, Ph.D., 1972, Harvard University; J.D., Georgetown University, 1960.

Donald J. Messmer, assistant professor of business administration. B.S.B.A., Washington University, 1969.

Colin Park, professor of business administration. M.B.A., University of Buffalo, 1950; Ph.D., University of Chicago, 1955.

Bruce D. Rigelman, assistant professor of government. A.B., University of Minnesota, 1969; Ph.D. candidate, Princeton University.

Allen B. Sanderson, assistant professor of economics. A.B., Brigham Young University, 1967; M.A., University of Chicago, 1970; Ph.D. candidate, University of Chicago. Assistant professor, Georgia State University, 1970-71.

Elmer J. Schaefer, assistant professor of law. B.A., Northwestern University, 1961; M.A., Harvard University, 1965; J.D., Harvard Law School, 1968.

Edward A. Shearls, instructor in marine science. B.A., Indiana University, 1968; M.A., Indiana University, 1971.

Lynn S. Schulz, associate dean of students for student development. A.B., William and Mary, 1967; M.A., 1969, Ph.D., 1970, University of Virginia.

Nicola Vuletic, visiting associate professor of chemistry. B.Sc. (chemistry), University of Sarajevo, Yugoslavia, 1963; M.Sc., Ph.D., University of Zagreb, 1968, 1969. Research Associate, Senior Research Associate, Institute of Agricultural Research, Sarajevo, 1964-72; Senior Research Associate, Tobacco Institute, Zagreb, 1972-.

Terrence C. Winebrenner, instructor in theatre and speech. B.S., M.A., Southwest Missouri State College, 1971, 1972. Instructor, Drury College, 1972-73.

Morris Wray, associate dean of students for residence hall life. B.A., Mars Hill College, 1964; M. Div., Wake Forest, 1967; M.A., Vanderbilt University, 1970.

The Board approved two faculty appointments to fill new positions.

Mario D. Zamora, visiting professor of anthropology. A.B., M.A., University of the Philippines; Ph.D., Cornell University, 1963. Chairman, anthropology department, University of the Philippines, 1963-70; Director General of the Philippine Government's National Research Center for Ethnic Minorities; Director, Museum and Institute of Ethnology and Archeology, University of the Philippines; visiting professor, Eastern Montana College, 1972-73.

Douglas Rendleman, assistant professor of law. B.A., M.A., and J.D., University of Iowa; L.L.M., University of Michigan, 1970.

New Psychologist

Miriam W. Cardi, B.A., M.A., and Ph.D., Ohio State University, has been appointed staff clinical psychologist for the Center for Psychological Services.

Assistant Director of Student Health Services

Franklin A. Munsey, M.D., has been appointed Assistant Director of Student Health Services, effective August 1.

Dr. Munsey, 55, is a native of Massachusetts. He attended Phillips Academy, Dartmouth College, and Boston University School of Medicine.

He took his internship at Gorgas Hospital, Ancon, Canal Zone, and his residency in pediatrics at the Research and Educational Hospital in Chicago. He has been engaged in private practice in pediatrics in Rockford, Ill., since 1949.

Leaves of Absence

Nine faculty members were granted leaves of absence during the 1973-74 session by the Board.

Gilbert A. Cooke, instructor in modern languages, was granted a leave from September through June to fulfill military obligations.

Richard E. Damon, assistant professor of government, will be on leave from September through June as a Fulbright Fellow at the University of Clermont, France.

Carl P. Daw, assistant professor of English, has been given leave for the first semester of the 1973-74 academic year to engage in research under a faculty research fellowship award.

Jan B. deWeyenthal, assistant professor of government, will be on leave from September 1 through January 31 to accept a grant from the American Council of Learned Societies.

Franz L. Gross, associate professor of physics, will be away from September through June to continue his work with the U.S. Arms Control and Disarmament Agency.

Anthony L. Guenther, associate professor of sociology, will be on leave for the first semester of next year to engage in research under a Faculty Research Fellowship Award.

Continued on page 6

Charlotte P. Mangum, associate professor of biology, will be at the University of Aarhus, Denmark, for the first semester of next year undertaking research.

William L. Morrow, professor of government, has accepted a grant from the Department of Health, Education and Welfare from September 1 through June 30.

Charles F. Perdrisat, associate professor of physics, has been granted leave of absence from August 1, 1973 through July 31, 1974 to conduct experimental work at the Laboratory of High Energy Physics, Federal Institute of Technology, Zurich, Switzerland.

Resignations

The following resignations, effective June 30, were accepted by the Board: Charles F. Baes, Jr., visiting research professor of chemistry; William J. Bangs, assistant professor of mathematics; N. Stephen Bauer, assistant professor of English; Brian Bromberger, assistant professor of law; Miriam Cardi, acting assistant professor of psychology; James A. Cornette, Jr., instructor in English; Taylor K. Cousins, assistant professor of economics; Jerome J. Curtis, Jr., assistant professor of law; Wallace A. Elliott, assistant dean of men; Gerald A. Greenberger, visiting assistant professor of history.

Also T. Henry Hutchinson, visiting professor of law; Christina W. Jackson, acting assistant professor of physical education for women; Virginia S. Jordan, assistant professor of mathematics; James E. Marlow, assistant professor of English; William McCormick, Jr., associate dean and professor of business administration; John J. McCusker, assistant professor of history and Fellow of the Institute of Early American History and Culture; Joel C. McGurk, assistant dean of men.

Also William G. McNairy, lecturer in business administration; Karl E. Peters, visiting assistant professor of religion; Stephen P. Reyna, assistant professor of anthropology; James M. Roherty, professor of government; Anthony J. Santoro, associate dean and associate professor of law; C. Diane Terry, circulation librarian; Betty Jo Kremer Thomas, instructor in theatre and speech; Richard J. Vargo, associate professor of business administration; and Sue W. Welch, assistant cataloging librarian.

The Board also accepted the resignations of Andre J. Bourde, James Pinckney Harrison Professor of History; Mark E. Chittenden, assistant professor of marine science; and Richard W. Moncure, instructor in marine science, effective, Feb. 1, 1973.

Admissions

The Admissions Policy Committee submits the following revision of the policy statement governing the admission of undergraduate students to the College. The principal differences between this statement and the earlier one (adopted by the Board in 1963) are the following: a distinction has been made between matters of policy and matters of procedure, and only matters of policy have been included; the statement includes less specific and transitory data, and should in this way stay viable longer than has been true of the last statement; and, finally, the statement incorporates a series of diverse aspects of obligations and considerations of the College, as a selective state university desiring both strong bonds to its past and a stronger vision of both excellence and diversity.

BE IT RESOLVED, That the Board of Visitors accepts the attached statement, labeled "Policies Governing the Admission of Undergraduate Students to the College of William and Mary in Virginia" presented to it by the Admissions Policy Committee of the College.

Policies Governing the Admission of Undergraduate Students to the College of William and Mary in Virginia

Application for admission to the College of William and Mary is open to all, acceptance to be decided on a competitive basis within the framework of certain concepts, balances, and constraints discussed below.

The College accepts and seeks to blend the diverse aspects of its character. As a publicly-supported state institution it must be responsive to the needs of higher education in Virginia. As a selective institution it must look for students who can bring academic excellence to the college community. As an institution wishing some sense of continuity and sustained interest it must relate to its alumni. And in its need to enrich the fabric of the college community, to avoid rigidity, and to enlarge its possibilities, the College must try to reach out to a rich diversity of background and talent. In all of this, two paramount considerations must be the potential benefit of the College to the student and of the student to the College.

As a state supported institution of higher learning, the major responsibility of the College is to Virginia residents. The Board of Visitors specifies the ratio of in-state to out-of-state students to be admitted to the College. Recognizing that the infusion of talent from other parts of the United States and from foreign countries allows William and Mary to achieve a greater complexity and diversity, the College will continue to admit a significant percentage of out-of-state students.

The College expects high academic qualifications from its entering students. An entering freshman must have shown an ability to perform well in his pre-college years, both scholastically and on standard examinations. An entering transfer student must have shown an ability to perform well at the college level. Evidence of imagination and tenacity are considered indicative of promise in academic matters as well as in special interest areas. A student unable to meet the academic challenge of William and Mary will be frustrated in attempting to realize his potential. A binding limitation on admissions, therefore, is that the student should, in the best judgment of the Admissions Office, be able to meet this challenge.

The College recognizes strong bonds with its alumni. Other considerations being essentially equal, preference will be given to the applications of children of alumni.

Along with these considerations, the College desires to incorporate into its community a wide variety of backgrounds, attitudes, and interests. This has meant a commitment to recognize and to try to meet the educational needs of members of minority groups. Diversity of geographical and economic backgrounds is sought. There is also a conscious effort to include in each class men and women with special talents and abilities or interests, whether artistic, athletic, scientific, or in some other area. In some instances acceptance of such a student is based upon a special skill, subject again to the general premise that the student should be judged capable of solid academic accomplishment.

Admissions policies are made by the Admissions Policy Committee in consultation with the Admissions Office and are subject to review by the Board of Visitors. Admissions procedures are developed by the Admissions Office in consultation with the Admissions Policy Committee.

Retirement of Richard Bland College President

For twelve years, Colonel James M. Carson has devoted his full energies and great abilities to the development and administration of Richard Bland College, the two-year branch of the College of William and Mary at Petersburg.

From the moment of his appointment to head the institution on June 1, 1961, Colonel Carson began the mobilization of the limited resources then available for the operation of the new college so that students could be promptly accommodated and the educational needs of the region be better served.

With the enthusiastic support of Petersburg, Dinwiddie and neighboring communities in which the President's own enthusiasm and leadership were salient factors, Richard Bland soon became an important member not only of the William and Mary family but of the State system of higher education.

Colonel Carson's tenure at Richard Bland and the ability of the college to overcome many difficulties reflected his determination and perseverance, characteristics demonstrated in his distinguished military career which he cut short to accept the Richard Bland assignment.

A native of Summerton, South Carolina, Colonel Carson received the B.S. degree from The Citadel, graduating in the upper third of his class, and a master's degree in educational psychology from the University of South Carolina. He also did graduate work in education, administration, guidance and psychology at the Universities of Virginia and Maryland. Prior to military service spanning 21 years, he served as teacher, principal, and superintendent of schools in the Pamlico school system, South Carolina.

RESOLVED, That the Board of Visitors of The College of William and Mary in Virginia hereby expresses its sincere appreciation to James M. Carson for his dedicated service to the cause of higher education in Virginia, and particularly for his able development and direction of Richard Bland College as the two-year branch of this institution at Petersburg.

RESOLVED FURTHER, That the Board take note of Colonel Carson's impending retirement September 1, 1973 by entering this resolution in its permanent annals and conveying a copy to him and Mrs. Carson with its best wishes for the fullest possible enjoyment of the years ahead.

President's Advisory Council - Christopher Newport

The Board approved the appointment of a President's Advisory Council for Christopher Newport College. Council members are: Franklin O. Blechman, attorney; Harrol A. Brauer, Jr., Vice President and Director, Peninsula Broadcasting Corporation (WVEC-AM-FM-TV); F. Hunter Creech, Vice President, Newport News Shipbuilding and Dry Dock Company; David G. Fluharty, Jr., M.D.; Mary C. Hastings, Vice President, Hastings-Raydist.

Also Joseph H. Lyles, Assistant Superintendent in Charge of Instruction, Hampton Public School System; E. J. King Meehan, Executive Director, Peninsula Industrial Committee; Mary Ellen Mitchell, Principal, Palmer Elementary School; Major General Howard Schiltz, U.S. Army, Retired, Former Commanding General, Fort Eustis; Harry Wason, Wason Realty; William Wilkerson, Director, Mariners Museum; and Y. B. Williams, President's Staff, Newport News Shipbuilding and Dry Dock Company.

Equal Opportunity Plan

On January 1, 1973, the Governor of Virginia, by Executive Order No. 29, promulgated the Virginia Equal Employment Opportunity Plan which states:

"It shall be the policy of the Commonwealth of Virginia to maintain and promote employment opportunity. Appointments and tenure are based upon merit and fitness without regard to sex, age, race, religion, national origin, political affiliation, or other non-merit job-related factors."

The Order charged Agency Heads with the responsibility of administering and enforcing the Plan and provided detailed guidelines for its administration. The College of William and Mary established an "Equal Employment Opportunity Plan" in August, 1970, which is in substantial agreement with the Virginia Plan of January 1, 1973. Although the provisions of the 1970 William and Mary Plan have been observed carefully since it was developed, it is desirable that the College officially take cognizance of the Governor's Executive Order and its applicability to this institution.

RESOLVED, That the Board of Visitors hereby adopts the Virginia Equal Employment Opportunity Plan promulgated by the Governor January 1, 1973, as the official policy of the College of William and Mary, applicable to all employment practices.

Athletic and Recreational Budgets

The Board approved 1973-74 operating budgets for expenditure of athletic and recreational fees, the Men's Athletic Association and the Women's Athletic Association.

**ATHLETIC AND RECREATION FEES
PROPOSED OPERATING BUDGET
1973-74**

Revenues:		
Athletic and Recreation Fee of \$88 for 4,700 students		\$413,600
	<u>Budget</u>	<u>Budget</u>
	1972-73	1973-74
Operating Budget:		
Men's Athletics	\$357,315	\$336,198
Women's Athletics	19,965	36,230
Men's Physical Education	-0-	12,000
William and Mary Hall		
Operating Fund	-0-	9,400
Student Recreation:		
Dances and Special Events	3,500	3,500
Concerts and Lectures	4,500	4,500
Band Fund	2,800	3,500
Overhead (2%) charged by Commonwealth of Virginia	<u>7,920</u>	<u>8,272</u>
Totals	\$396,000	\$413,600

**MEN'S ATHLETIC ASSOCIATION BUDGET
Year Ending June 30, 1974**

	<u>Budget</u>	<u>Budget</u>
	1972-73	1973-74
Revenue:		
Football	\$132,500	\$183,000
Basketball	30,000	34,000
Student Fees	357,315	336,198
Educational Foundation	75,000	90,000
Miscellaneous - Program Sales, Vending, Concession, Television and Radio	40,000	45,000
General Current Fund Local	30,000	58,772
Donation	-0-	10,000
Total Revenue	\$664,815	\$756,970

Expenditures:

Salaries	\$210,000	\$242,970
General Expense	26,000	43,000
Baseball	5,000	5,900
Basketball	26,000	36,000
Fencing	700	700
Football	69,400	90,000
Golf	1,900	2,800
Gymnastics	1,200	1,600
Lacrosse	2,200	2,700
Rifle	1,200	1,400
Soccer	2,200	2,600
Swimming	2,200	2,700
Tennis	1,900	2,000
Track	9,500	10,000
Wrestling	4,500	4,900
Publicity	13,415	8,000
Contingencies	13,500	-0-
Medical	<u>10,000</u>	<u>14,700</u>
Total Operating Expense	\$400,815	\$471,970
Grants-in-Aid	\$264,000	\$285,000
Grand Total	<u>\$664,815</u>	<u>\$756,970</u>

**WOMEN'S ATHLETIC ASSOCIATION
EXPENSE OF OPERATION
1973-74**

	<u>Budget</u>	<u>Budget</u>
	1972-73	1973-74
Administrative and General Expense:		
Managerial Staff and Offices	\$ 6,080	\$15,800
General Expense	2,007	3,189
Sports:		
Badminton	200	470
Basketball	1,325	1,550
Dance	1,015	1,400
Fencing	-0-	526
Golf	955	1,352
Hockey	1,325	2,010
Lacrosse	1,175	1,775
Mermettes	920	1,300
Swimming Team	1,500	2,138
Tennis	1,100	1,800
Track and Field	-0-	250
Volleyball	813	900
Special Events	400	450
Miscellaneous (awards, intramurals, laundry, etc.)	900	1,010
Other:		
Maintenance of Building and Equipment	200	250
Maintenance of Athletic Fields	50	60
Totals	<u>\$19,965</u>	<u>\$36,230</u>

Advertisements (For Rent) continued from page 8

3 bedroom fully furnished house June 18 to August 24, (1 cat to take care of). Call 229-7578.

Previous renter has sudden change in plans; help him get his down-payment back! 3 BR house 2 miles from campus, c. June 10-August 25. Air-conditioned, fenced back yard, \$175 per month, \$425 for whole summer, \$400 if paid in advance (+ utilities). Prefer families and non-smokers. James R. Baron, 229-7660.

Furnished townhouse available early June until late August, 2 blocks from campus - 1 1/2 blocks from restored area. 2 bedrooms, 1 1/2 baths, family room, complete kitchen and utility room. Utilities included. 229-0946.

Apartment to sublease for summer. Fully furnished Townhouse at Marlboro Apts. (2 bedrooms, large kitchen, living room with fold out couch, 2 bathrooms) central air conditioning, pool privileges, available both summer sessions. \$180 per month plus electricity. Call 229-0996.

3 bedroom rancher, Skipwith Farms, available beginning this summer, sublet for 1 year or rent for longer; contact Sam Baker 229-0074 after 6 p.m.

Apt. for rent - Midtown Newport News, air-cond., all utilities paid, 2 rms. & bath. Available June 7, lease expires Sept. \$133.50/mo. 229-3117 after 3 p.m.

THE CALENDAR

TUESDAY, MAY 22

Flash Gordon Serial: CC, Theatre, 12:30 & 6 p.m.
Catholic Mass: Wren Chapel, 7 p.m.

WEDNESDAY, MAY 23

Flash Gordon Serial: CC, Theatre, 12:30 & 6 p.m.

THURSDAY, MAY 24

Flash Gordon Serial: CC, Theatre, 12:30 & 6 p.m.
Holy Communion: Wren Chapel, 5 p.m.
Christian Science: Wren Chapel, 6:15 p.m.

FRIDAY, MAY 25

Flash Gordon Serial: CC, Theatre, 12:30 & 6 p.m.
Math Dept. Picnic: Matoaka Shelter, 4 p.m.
Hillel: Temple Beth El, 7:30 p.m.

SATURDAY, MAY 26

Organ Recital: Wren Chapel, 11 a.m.

SUNDAY, MAY 27

no activities scheduled

MONDAY, MAY 28

School of Education Doctoral Exam: CC, Gold Room, 10 a.m.

TUESDAY, MAY 29

M.B.A. Association Party: Matoaka Shelter, 4 p.m.
Catholic Mass: Wren Chapel, 7 p.m.

CLASSIFIED ADVERTISEMENTS

For Sale

Singer Zigzag sewing machine. Excellent condition. Carrying case. 229-6794.

5 ft. Coldspot refrigerator, freezer compartment at top. 1 year old - like new. Automatic defrosting. Will deliver. \$80. 220-0357.

'66 Volvo, 122S, well cared for. \$750. Contact R. Maccubbin 229-8265.

1966 Oldsmobile 88, 4 door, H.T., power steering, power brakes, auto. trans., low mileage. Call 229-9356.

Maple twin-size bed, box spring and mattress, \$35. 19 cm. Head skis, \$50. Women's ski boots, size 7, \$10. 564-9749.

7 cu. ft. refrigerator. Excellent condition. Call Derek Smith, Bryan 304, Ext. 205.

Air conditioner, Fedders, 11,000 BTU, 110 V, 2 yrs. old, excellent condition, \$150. Garrard Type A record changer, stereo, 4 speed, good condition, \$15. Phone 229-4967 after 6 p.m.

Need a refrigerator? Family size (5'5" tall) with plenty of freezer space! \$50 (negotiable). Also, we have 2 sofas, 1 large chair, 3 large rugs, 3 pr. curtains, 1 dining room table, 2 beds, 4 end and coffee tables. Must sell! Call Jeanne or Cindy 229-9294.

Brick Ranch House, 3 bedrooms, 1 1/2 baths, country kitchen, central air conditioning, attached garage. In Norge. Available June 1. Call 564-9817 after 6 p.m.

Two royal blue wing chairs with wood trim. After 4 p.m., 125 Richmond Road above College News Office.

RCA Victor Color TV, 23" diagonal, floor model, just serviced, perfect working condition, \$250. Ranch style aluminum frame WINDOW SCREENS, 7 in various sizes, excl. cond., \$2 ea. 1 wood frame screen door w/hdwe, approx. 32x80x1", \$6. Lavatory sink and toilet, white porcelain, most fittings, good cond., \$25. Call Mrs. Furey, 229-6099.

'71 Chevelle. 4 door, automatic transmission, power steering, air-conditioned, radio, vinyl roof, 2 mounted steel-belted radial snow tires. Excellent condition, \$2400. Call 874-0141.

1970 Westinghouse Refrigerator-Freezer; 14 cu. ft.; separate freezer compartment. \$100. Call Debbie or Linda, Landrum 315, Ext. 421.

1968 Jamestown Mobile Home - Furnished, carpeted, air-conditioned, with washer and utility shed. 2 miles from the College. Occ. July 1. 229-9626.

Triumph Spitfire. 1963, metallic gray. Three tops (removable hard top and regular convertible and tonneau tops), radio. New clutch, new rear end, new tires, new shocks, new deluxe exhaust system, overhauled transmission, body and finish like new. Engine needs some work. \$650. 229-7836.

Beautiful, luxurious, custom made damask king size lined bedspread with matching bolster in French (light) blue. In excellent condition and cost many times the asking price of \$75. Matching venetian style and fringed lined draperies available to cover windows plus wall, elegant living room or bedroom. Custom made and in fine condition, \$75. Will sell separately. Call 229-7563 - Barbara Johnson.

4-piece redwood patio furniture (chair, lounge, settee, and coffee table), standing metal storage shelves. Best offers, eager to sell. Call: Dolmetsch, 229-1277 evenings.

FOR SALE: (delivery on June 11th) 1969 VW-363 (Squareback Stn. Wgn. w/Sunroof), AM-FM radio. Very good condition. Price negotiable. Call: Dolmetsch, 229-1277 evenings.

Extension ladder, \$35; 20 foot Sears best industrial standard aluminum ladder in perfect condition, normally selling for over \$55. I am replacing it with a longer one. Call J. McKnight at 229-5294 evenings or weekends.

Ten-foot surf board, condition like new, w/rack, \$40. Call 229-2332 after 5 p.m. during week or weekend.

Name your price on a Silver-tone 21" Idiot Box. Good condition, clear picture. Today through Thursday \$25, Friday \$20, Saturday \$15, Sunday \$10, Monday \$5, Tuesday Free! John Delos, 229-0902.

Beseler 23C enlarger, w/dust cover, 35 mm and "Ideal Format," neg. carriers, 2 months old. Like new. Call Henry Grunder, 229-6572 after 5 p.m.

Wanted

Ride - Anywhere in West. Will share expenses and driving. Please call 229-2928.

Wanted: to buy a piano. Preferably small in size. Call anytime. 229-1459.

Female roommate wanted - 3 bedroom townhouse, a/c, furnished, pool. About 2 1/2 mi. from Wren on Rt. 60. Summer and/or next fall. 220-0732.

Room wanted: from June 1 - June 18 or entire summer. Must be near campus, moderately priced. Also: 24 inch bike (girl's). Call Sarah Tolson, 229-3000, Ext. 364. If necessary leave message.

Married couple - no children, require from September, 1 bedroom apt. in Williamsburg area. Call 595-8187 collect.

Apartment or house wanted for rent or sublet beginning September, close to campus. Call 220-0742.

College of William and Mary
Williamsburg, Virginia 23185

For Rent

Summer sublet: 3 bedroom furnished house. Family room, dishwasher, utility room with washer and dryer, nice yard. Available approximately June 16-mid august. \$175 per month. 229-9639.

Furnished house for rent. 4 bedroom, double garage, fire place, corner lot, washer, dryer. Married couples only, ideal for visiting faculty or married grad. student with family. Available for 1 year beginning July 1. For information, 229-4906 evenings.

Summer rental: Large mobile home, nice yard, 2 mi. from College. Couple only. June through August. Call 229-7192 after 5 p.m.

House for rent - immediate occupancy. Two-bedroom, furnished, w/large kitchen, yard and large two-room shed, located on Page St., 1 mile from campus. \$200/mo. Call 220-1027 evenings.

Furnished 3 bedroom house in Skipwith Farms. 1 1/2 bath, eat-in kitchen, separate dining area, large living room with fireplace, utility-recreation room, fenced-in pebblestone patio, large yard. Responsible couple preferred. Available from September 1, 1973 to July 1, 1974 (dates somewhat flexible). 229-0556 evenings.

Trailer for rent - 1 bedroom, 8'x45'. Mobile Estates, Williamsburg area, 5 miles from campus. \$110 plus \$60 deposit. Call 220-1405.

Continued on page 7

Non-Profit
Organization
U. S. Postage
P A I D
Williamsburg
Virginia
Permit No. 26