

William Mary News

Number 11

November 19, 1974

NASA-Langley Gives \$100,000 To Applied Science Program

The Langley Research Center of the National Aeronautics and Space Administration has made a new award of \$100,000 to the College for continued support of the Applied Science Program.

According to Dr. George T. Rublein of the mathematics department, director of the Applied Science Program, the new grant will be step funded over the next three years through August, 1977. Since the program was established in 1971, NASA has contributed a total of \$548,400.

The Applied Science Program is an interdisciplinary program staffed by faculty from the departments of chemistry, mathematics and physics. It

offers curricula leading to a master's degree in Computer Science, Atmospheric Science, Applied Mathematics, and Liquids and Solids. Courses are given on the Williamsburg campus and at the Virginia Associated Research Campus (VARC) in Newport News, so both full time and part time students can participate.

Funds from the grants are used to sustain research activities of faculty and students who are involved in the program. Special emphasis is placed on those areas of research that are related to the interests of NASA, Langley. Recent work has been done in several areas including upper atmosphere molecular processes, synthesis and characterization of polymeric materials, plasma theory, graph theory, linear systems, optimization theory and programming languages.

continued on page 7

DEAN ELECTED CENTEX HEAD

Dr. James M. Yankovich, Dean of the School of Education, has been elected president of the Center of Excellence, Inc., a Peninsula organization which is working toward establishment of a new educational resource center and telecommunications system.

Dr. Yankovich succeeds Dr. Richard B. Brooks as president of the Centex. Dr. Brooks was also Dean of the School of Education until his retirement in August and was instrumental in organizing the corporation.

Mrs. Stella Neiman, chairman of the Board of the Williamsburg Pre-School for Special Children, was added to the Centex board as a community representative. She is a member of the development staff at William and Mary and active in local public school circles. Mrs. Neiman is a former member of City Council.

Centex last spring filed applications for federal grants to enable construction of a transmitter near West Point for use by WTEC, Channel 46, which would initially use programming from WHRO-TV and television studios at William and Mary. Related to the applications were requests for funds to study use of special 6-megahertz broadcast channels as a means of delivering educational services to handicapped persons in the Peninsula area.

John A. Curtis, a retired telecommunications executive and consultant, has been instrumental in developing and following through on applications for federal funds. The applications are currently under review in Washington. Curtis, who is executive vice president of Centex, reports that progress is being made on the applications for funding despite the economic uncertainties which face government operations.

Holiday Invitations

Faculty and staff members interested in sharing the Thanksgiving or Christmas holidays with a foreign student are asked to call Dean Susan Albert's office.

There are approximately 35 foreign students living on campus, many of whom will not have relatives to visit during the holidays, when the residence halls will be closed.

Dean Albert may be reached at Ext. 581

Profile of Freshmen and Transfers

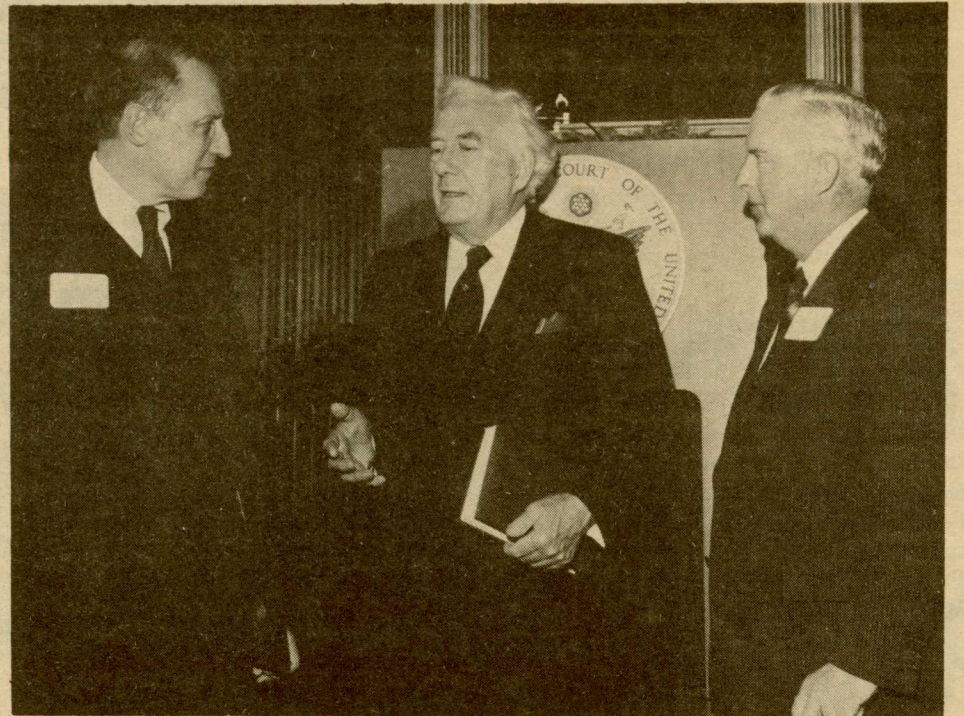
An analysis of the freshman class by the Admissions Office indicates that seventy-two percent finished in the upper tenth of their high school classes.

Of the 1066 enrolled, 532 are men and 534 are women. There are approximately 713 Virginians and 353 out-of-state students selected from more than 5100 applicants. The class total of in-state and out-of-state students reflects the long-standing Board of Visitors policy to maintain undergraduate enrollment at 70 percent in-state students.

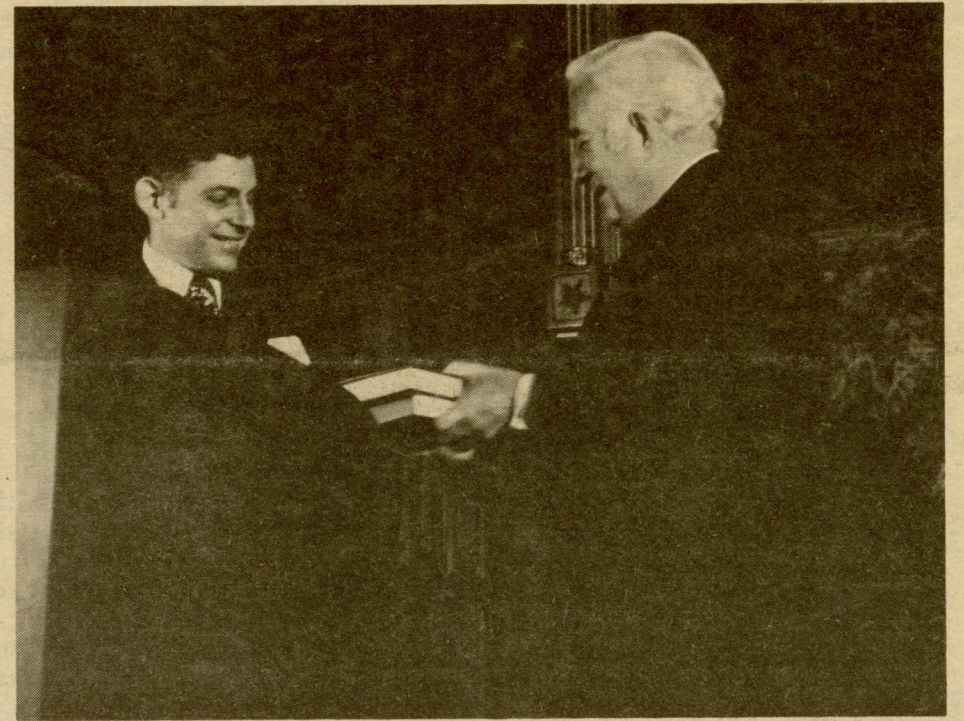
Aptitude test scores show that 59 percent of the freshmen admitted had total scholastic aptitude scores of 1200 or better. Six percent scored over 1399. For transfer students the mean grade point average was 3.11 on a 4.0 scale. The College accepted 178 transfer students this year from an application list of 882.

The Office of Student Aid reports grants and loans of \$101,641 awarded to 10 percent of the entering students. Average amount of financial aid per student, excluding student employment, is \$806.

MARSHALL PRESENTATION



(Top) Chief Justice Burger displays a copy of the first volume of the papers of John Marshall, which were presented to him Monday in the Supreme Court Building by Dr. Herbert A. Johnson (Bottom) of the Institute of Early American History and Culture, senior editor of the project. In top picture, Chief Justice Burger is flanked by President Graves and Dr. N. Ferebee Taylor, Chancellor of the Chapel Hill Campus of the University of North Carolina. UNC press is the publisher of the papers. SEE related story, page 2



Seven percent of enrolled freshmen and 95 percent of the transfer students were admitted as day students.

According to the geographic distribution of enrolled Virginia freshmen and transfer students, 27 percent are from Northern Virginia, including Alexandria, Arlington, Falls Church, and Fairfax counties.

Seven percent of the freshmen are sons and daughters of alumni. Thirty-four percent of the entering students were admitted under the early decision plan.

Thirteen percent of the students are from the Richmond, Hopewell, Petersburg area including Henrico and Chesterfield counties. Thirty percent come from the Peninsula and Tidewater areas, including Norfolk, Virginia Beach, Chesapeake, Portsmouth, Newport News, Hampton, York County and Williamsburg. Four percent of the class is from the Piedmont area of the state, including Bedford County, Roanoke County, Lynchburg and Roanoke.

continued on page 7

College of William and Mary
Williamsburg, Virginia 23185

Non-Profit
Organization
U. S. Postage
PAID
Williamsburg
Virginia
Permit No. 26

Judge's Papers Part of Exhibit

Several John Marshall manuscripts from the College's collection of Marshall Papers are on loan to the Supreme Court Library through the end of November.

The manuscripts are included in an exhibition being shown in conjunction with the ceremony held November 18 to commemorate the publication of the first volume of the Papers of John Marshall.

On loan are the law notes Marshall made as a law student of George Wythe at the College, 1780. Also on loan are three letters written by Marshall to his wife, Polly. Two letters written in 1797 relate to Marshall's sailing to and arriving in Europe as Envoy Extraordinary and Minister Plenipotentiary. He was also a member of the commission with Charles Cotesworth Pinckney and Elbridge Gerry, which was involved in what is today known as the X.Y.Z. affair, so called for the bribes demanded by anonymous French agents.

The third letter, dated January 2, 1803, was written from Raleigh, North Carolina, where Marshall was presiding over one of the U. S. District Courts.

Historical Society Sponsors Trip

The Lyon Gardner Tyler Historical Society is sponsoring a field trip to the Kingsmill Plantation on Nov. 22.

All who are interested in touring the site are invited to assemble in the PBK parking lot at 2 p.m. Transportation to the site will be available.

In case of rain, the tour will be postponed until Saturday, Nov. 23.

Ken Landfield, Ext. 464, is in charge of arrangements.

PBK Announces New Members

Members-elect of the Alpha of Virginia chapter of Phi Beta Kappa have been announced. The 31 William and Mary seniors will be initiated at the annual meeting of Phi Beta Kappa on December 5.

The members-elect and their majors are as follows:

Deborah Lee Allen, Economics; Cynthia Leigh Anderson, Classical Studies; Nancy Patricia Burgess, Government; Anne French Dalke, English; Candace Arlene Deen, German; Edmond Craig Dukes, Physics; Anne Marie Etgen, Inter-Disciplinary; Diane Hal Gropper, Economics; Alexis Catherine Hoare, Classical Studies; William Edward Hopkins, Mathematics; Peyton Kent Humphries, Classical Studies; Margaret Catherine Lascara, Fine Arts; Cynthia Ann Lewis, Government; Gregory Evers May, History; Barbara Ann McCulloh, Theatre & Speech; Emily Paul Miller, English; Dorothy Ellen Mills, Biology; James Paul Monacell, Government; Judith Lynne Perry, Psychology; Laura Catherine Pickett, French; Sara Shirley Rogers, History; Robert Alan Scarr, Chemistry; Charles Booker Schelberg, History; Joseph Wytch Stubbs, Chemistry; Cynthia Jane Sturgis, History; Tracy Jane Trentadue, History; Karen Rae Trimmer, Chemistry; Rowena Tucker, Elem. Education; James Arthur Wickenden, Classical Studies; Robin Wilker, English; and Marylie Catherine Williams, Psychology.



Interlochen Jazz Group Featured In Concert Series

The Interlochen Jazz Quintet is next on the current Concert Series.

The Quintet will perform Thursday, Nov. 21, at 8:15 p.m. in Phi Beta Kappa Hall. If available, single admission tickets will be sold the evening of the performance after season ticket holders have been accommodated. According to Warren J. Green, director of the Campus Center, the series has been fully subscribed this year.

Thursday night's concert will include several numbers written by members of the quintet. The quintet is composed of Dave Sporney, trombone; John Lindenau, trumpet; Jon Peterson, piano; Jerry Hartweg, drums; and Joseph McFarland, bass. All members are accomplished performers of classical music as well as exciting jazz musicians. Their combined talents have gained for the quintet an enthusiastic following, far beyond its home base of Traverse City, Mich.

Project PLUS Administrator Needed

A resident administrator is needed for Project PLUS, beginning Jan. 5, 1975.

To qualify, applicants must be married and either have a college degree or have academic progress close to that of a degree.

The couple will reside in the building. The administrator will be employed full time to counsel students in both social and organizational matters as well as to carry general administrative responsibilities for the residence.

Applications are available in the College Personnel Office, Room 201, James Blair Hall, and must be turned in to that office by December 13.

Minority applicants are encouraged to apply.

Library and CC Holiday Hours

Swem Library will observe the following hours during the Thanksgiving holidays:

Wednesday, Nov. 27: 8 a.m. - 5 p.m.

Thursday, Nov. 28: Closed

Friday, Nov. 29: 8 a.m. - 5 p.m.

Saturday, Nov. 30: 9 a.m. - 6 p.m.

The regular schedule will be resumed Sunday, Dec. 1.

The schedule for closing the Campus Center and Wigwam during the Thanksgiving recess is as follows:

Wednesday, Nov. 27: 4:30 p.m. --

Campus Center and Wigwam close.

Sunday, Dec. 1: 4 p.m. -- Campus Center reopens.

Monday, Dec. 2: 7 a.m. -- Wigwam reopens.

Asia House Seeks Applicants

Asia House is currently accepting applications for residence for spring semester, 1975.

A coeducational residential unit, Asia House is open to 32 undergraduates, sophomore or above, regardless of concentration, who are interested in gaining a broader understanding of Asia.

Applicants must demonstrate interest in the study of Asia by taking or having taken courses on the subject, or by having lived or travelled in Asia.

Application forms are available from Bruce Fenner, 229-8523, and must be completed and returned to him by 5 p.m., Dec. 13.

Magazine Announces 1975 Contest

Students are invited to participate in GLAMOUR Magazine's Top Ten College Contest for 1975. Young women from colleges and universities throughout the country will compete in GLAMOUR's search for ten outstanding students. A panel of GLAMOUR editors will select the winners on the basis of their solid records of achievement in academic studies and/or in extracurricular activities on campus or in the community.

The Top Ten College Winners of 1975 will be photographed by leading New York photographers and featured in GLAMOUR's August College Issue. During June, the ten winners will be invited to New York to meet the GLAMOUR staff and will receive a \$500 cash prize.

Anyone who is interested in entering the search should contact the News Office for more information. The deadline for submitting an application to GLAMOUR is February 15, 1975.

F.H.C. Society Inducts Members

The F.H.C. Society recently inducted six new members: Rick Bader, Lane Chambers, George Duke, Glenn Gundersen, Dicky Rhyne, and Don Zuckerman.

Membership in the Society is limited by its constitution to sixteen, including six juniors, six seniors and four professors.

The eighteenth century Society was the first student secret society in America and the forerunner of the American fraternity system. Its influence is recognized in the founding of two contemporary fraternities: the P.D.A. Society in 1773 and the Phi Beta Kappa Society in 1776.

Early membership in the Society included Thomas Jefferson, St. George Tucker, Bishop James Madison, James Innes, and John Page.

Although members never disclosed what the Society's initials represented, their correspondence suggests that the initials were for *fraternitas, hilaritas* and *cognitio* (brotherhood, conviviality and learning.)

Luncheon Club Opens Dec. 2 For Faculty

The Faculty Luncheon Club will open Dec. 2, in the old Wig from 11:30 a.m. to 1:30 p.m. daily, Monday through Friday.

Part of the Hoi Polloi at night, the old Wig will be used during the day for lunch.

The new facility will be open to members of all faculties of the College and administrators. It will offer a soup du jour, selection of sandwiches with potato chips, salad bar, and a collection of desserts and beverages. A luncheon of soup, sandwich, salad and coffee for \$1.60 will be offered with other items a la carte.

Planners hope the new facility, which was established through the efforts of the Faculty Club, will prove a popular spot for faculty and administrators to eat.

William and Mary News

Volume III, Number 11
November 19, 1974

Published weekly through the Office of Information Services by the College of William and Mary for faculty, staff and students. Produced by the College News Office, 125 Richmond Road. Inquiries should be directed to Marjorie N. Healy, Information Officer. Mailed to addresses of employees as on record at the Personnel Office, James Blair Hall, to which office address changes should be directed.

Graduating Senior Is Talented Musician

by Jeanne Nicholson, '77

Greg Greenway, '75, has been singing and strumming his guitar for a number of years, and his music has grown along the way from an enjoyable pastime into a major part of his life.

His classmates have become accustomed to the campus' "resident minstrel" playing in many different places — at the Hoi Polloi, Uncle Morris' Coffee House, or perhaps on the steps outside Madison Hall, where he is a resident advisor this year.

Self-taught Guitar Player

Greg, a graduate of George Wythe High School in Richmond, is a self-taught guitar player. He started at the age of ten, and has been busy playing his guitar on campus since his freshman year. In those days he often found himself playing for friends in the freshman residence halls of DuPont and Yates when he wasn't practicing in the hall bathroom "where the acoustics were so good." This year he is still playing for students, and he actually started before the academic year got underway as one of the key entertainers during the freshman orientation.

Throughout the year Greg is often asked to play for fraternity parties at the Hoi Polloi, or during warmer weather at the Lake Matoaka shelter where many groups can hold outdoor get-togethers. However, this year Greg is probably kept busiest with his position as key organizer of Uncle Morris's Coffee House. The Coffee House was begun last year with the efforts of Morris G. Wray, former Associate Dean of Residence Hall Life,

and provides a series of informal musical evenings, usually drawing anywhere from 100 to 150 students.

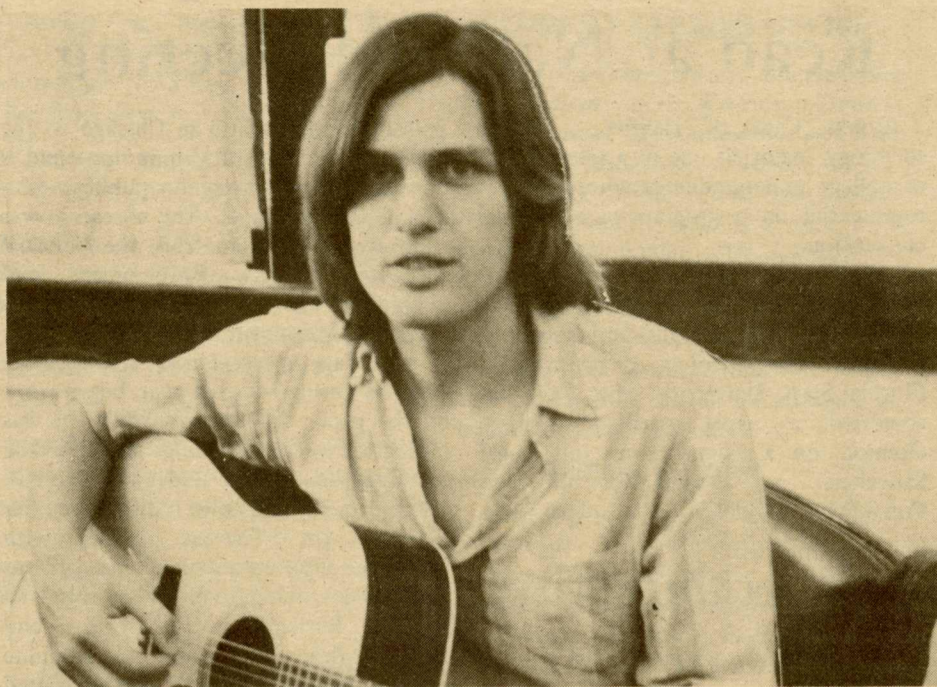
Plays "Music to sit down by"

Greg usually starts an evening off with what he calls "music to sit down by" playing, for example, the more well-known songs of Cat Stevens or James Taylor. Playing familiar tunes, Greg says, is like "getting your foot in the door," and from that point he can break into songs he has written himself. He prefers playing his own works because writing and composing is his true ambition and he hopes to soon be playing a repertoire of songs for the Coffee House which are entirely self-composed. Campus listeners have already developed favorites and often ask for "Christina's World" or the one they refer to as "the railroad song," a song whose lyrics grew out of Greg's long-time associations with trains.

Greg's father, who works for Amtrak's passenger service, often meets students traveling to and from Williamsburg, and in conversation will only refer to Greg's guitar playing as "plunkin' ". Greg admits his parents see his preoccupation with music as somewhat impractical; however, he hopes to associate with music all his life in one way or another.

Destination: Boston

Greg will graduate in June, at which time his immediate plans are to head for New England, preferably the Boston area. He describes the young atmosphere of universities, mini-concert circuits and folk communities there as being full of



Greg Greenway, '75

opportunity for the beginning musician, and he cites musician John Denver as one who got his start there.

In the past Greg has worked a four-week stand at the Hospitality House, at a Holiday Inn during the summer, and this fall he played a number of weeks at the Bonhomme Richard Inn. Yet, as much as he enjoys singing and playing, Greg feels he will not be doing as much actual playing this year so that he can spend more time writing.

W&M Classes Inspiring

Greg's strong desire to write music is the prime reason he is majoring in English. He sees literature and music as

being "so close" and compares reading a novel to listening to an album. The study of the creative process involved in producing great literature is closely related to what Greg works toward when developing his lyrics and music. He says he feels William and Mary has a "magnificent" English department and remarked how he has come out of a number of courses feeling "super-charged." Getting this type of inspiration from classes and being able to apply it and work it into his songs convinces Greg he is truly "carrying his education out of the classroom."

Public Events Aired By WCWM

News of College-related events may be broadcast on the campus radio station, WCWM-FM.

WCWM recently established a Continuity Department to insure that all events are announced over the air. Anne Waring and Kathy Eason, Directors of Continuity, ask to be notified of announcements a few days in advance of the event, and they will be glad to broadcast them. Information can either be sent to the station office on the second floor of PBK or phoned in using Ext. 544 or 229-4068.

Panel on SE Asia Set for Thurs.

Insurgency in Southeast Asia is the discussion topic for a panel to be held at Asia House on Nov. 21, at 7:30 p.m.

Two William and Mary professors and a senior anthropology major will participate in Thursday's panel. Vinson H. Sutlive, associate professor of anthropology, will discuss the economic and historical factors which have traditionally given rise to insurgency movements. Visiting professor of anthropology, Mario D. Zamora, will speak on the current insurgency movement in the Philippines. Chris Neuman, who is writing his senior thesis on insurgency movements, will present a theoretical framework for such movements as well as discuss the social relations and lines of authority within the movements.

The public is invited to attend the panel discussion.

J.H.Cocke, Alum, Is Lecture Topic

Botetourt Society

To Meet
Thursday

John Hartwell Cocke, an early alumnus of the College, will be the subject of a talk by M. Boyd Coyner, Jr., professor of history, to the Botetourt Bibliographical Society, Thursday, Nov. 21.

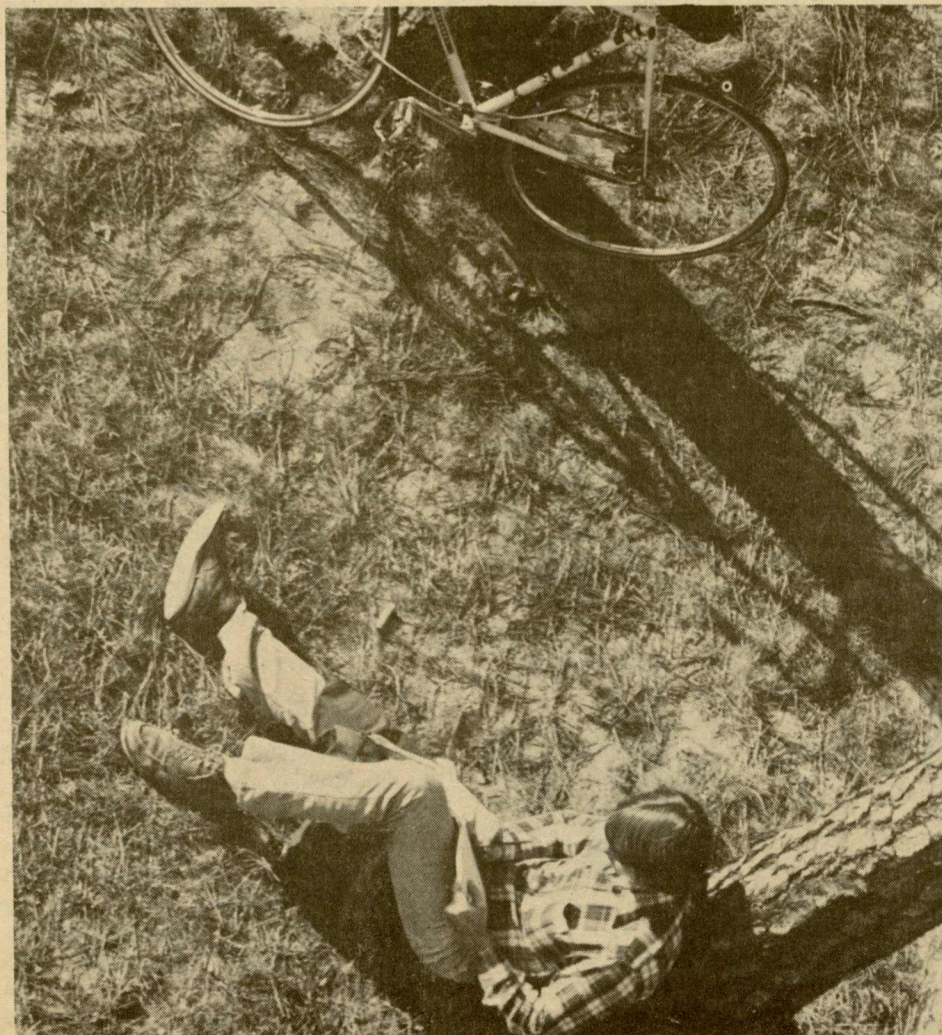
Coyner, who is currently writing a biography of Cocke, will speak on "John Hartwell Cocke (1780-1866): The Patrician as Social Critic," in the Rare Books Room of Swem Library at 8:15 p.m. Copies of books owned by Cocke will be on display for the meeting.

Cocke was a member of one of the wealthiest families in Virginia. Born in Surry County, he received his education at both the early grammar school and the College, leaving the latter in 1800.

Owner of a tobacco plantation in Bremo, Virginia, and a cotton plantation in Alabama, Cocke was an educator; a humanitarian who worked to modify the harshness of slavery; and an evangelical convert, becoming the first president of the American Temperance Union. He was also one of the three prominent founders of the University of Virginia, where many of his papers are kept.

His family plantation which still stands in Fluvanna County, has been called "the capstone of the Greek revival in America."

View From the Top



A student studying is caught by photographer looking down from atop Millington Hall.

Student Co-edits Paper, Read at National Meeting

Robin Cage of Halifax, a junior sociology major, is one of a select group of college undergraduates whose work is represented on a program of a national convention.

Along with Dr. Charles W. Thomas, director of the Metropolitan Criminal Justice Center on campus, and Samuel C. Foster of the sociology department at Florida State University, Miss Cage has co-edited a paper entitled, "Public Opinion on Criminal Law and Legal Sanctions: An Examination of Two Conceptual Models." The paper was

presented this month in Chicago to the American Society of Criminology and is currently up for review for publication in sociological journals. The research was supported by a grant from the National Institute of Law Enforcement and Criminal Justice of the Law Enforcement Assistance Administration.

Miss Cage, a research assistant for Dr. Thomas during the past year, began work on the paper this summer while she was taking a Directed Readings course in the sociology department under Dr. Thomas. Using data she had collected for an earlier project for Thomas dealing with victimization, she mailed surveys to households in the four-city area of Norfolk, Portsmouth, Chesapeake, and Virginia Beach, in order to examine public attitudes toward a very restricted number of behaviors, most of which fall within the scope of standard criminal offenses.

A member of the varsity tennis team at William and Mary, Miss Cage is a 1970 graduate of Halifax High School. She is currently in the process of researching court and school data for a study of juvenile delinquency in the Tidewater area.

U.S. Architecture Topic of Talk

A discussion of architecture in the United States will be the next program in the Project PLUS Forum series, "The State of the American Dream," on Wednesday, Nov. 20, at 7:30 p.m. in Millington auditorium.

Participating in the discussion will be architects Carlton S. Abbott and Wright B. Houghland. Abbott is an award winning Virginia artist and architect-planner whose local designs include the Waller Mill Park recreational area. Houghland, a member of the College's Department of Fine Arts, is responsible for the design of several buildings in the area, including the Williamsburg Public Library and St. Martin's Episcopal Church.

The discussion will be preceded by a video-tape showing of an interview by William F. Buckley, Jr., of Ada Louise Huxtable, architectural critic for the New York Times, and James Rossant, the architect-planner responsible for the design of the planned community at Reston, Virginia.

Debaters Win

Area students continue to assist the College garner new laurels in intercollegiate debating.

Andy Davenport of Williamsburg teamed with Laura Dunlap of Staunton at the Madison College Tournament this weekend and had a 6-2 win loss record in the preliminaries. They lost to the University of Pittsburgh in the quarterfinals on a split decision by the judges.

Nancy Short and Sharon Simon, both of Hampton, were 5-3 for the preliminaries and again lost on a split decision in the quarterfinals to the University of West Virginia. If it was any consolation to the debaters, the two teams which defeated them ended up ranked one, two for the tournament.

In their division, Davenport ranked as sixth speaker and Dunlap as fifth.

In the senior division of the same tournament, Mary Addamiano of Alexandria and Marjorie Dunbar of Lithia were 6-2 in the preliminaries and defeated the Naval Academy in the quarterfinals. They met another team from William and Mary, Al Sykes of Vienna, Va., and George S. Butts, Jr., of Los Angeles, in the semi-finals which went on to the final rounds. The team of Butts and Sykes defeated the University of Ohio and lost in the final round on a 2-1 decision to Clarion State College in Pennsylvania.

In the senior division, Sykes was judged top speaker and Addamiano, tenth.

Soffen to Discuss Life on Mars

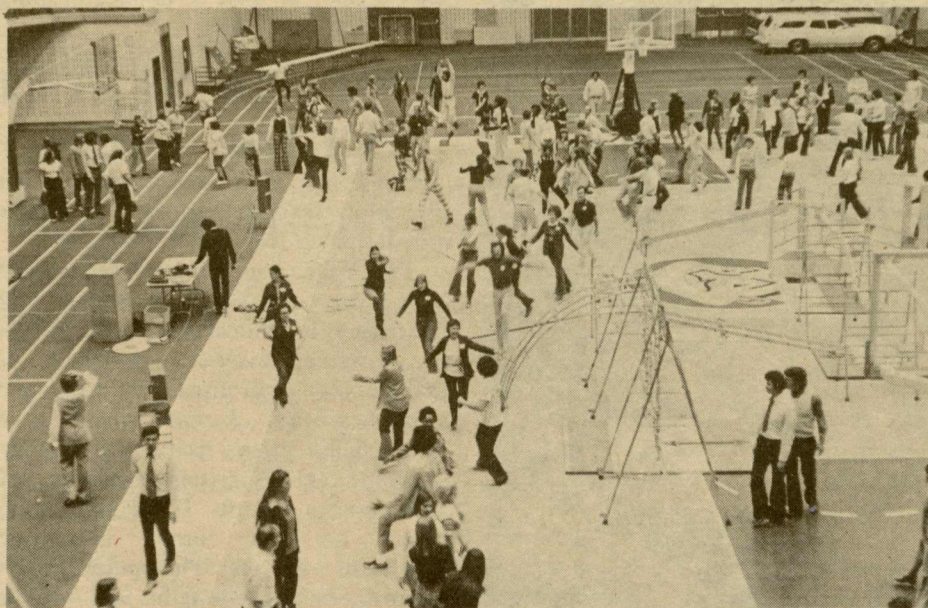
Dr. Gerald A. Soffen, chief scientist of the Viking Project at NASA's Langley Research Center, will discuss the "Current Status of the Search for Life on Mars" on Nov. 25.

Monday's lecture, which is part of the biology department's series of seminars, is open to all who are interested. It will be held in Millington 117 at 4 p.m.

Coffee will be served at 3:45 p.m. in Room 117 to provide an opportunity to meet and talk with Dr. Soffen.

THANKSGIVING REMINDER

Thursday, November 28, is Thanksgiving Day—a legal holiday for permanent classified State employees. Following the custom of past years, all administrative offices of the College will be closed on that day. No leave slip is required for taking this day as a holiday.



Elementary Physical Education Workshop Held in W&M Hall

Well over 200 Tidewater area school administrators, supervisors, teachers and student majors attended the workshop, which was held Nov. 6. Sponsored by the men's Physical Education Department

In Wren Chapel

Bruton Organist Continues Tradition

by Barbara Blake, '74

Visitors and residents alike who attend the organ recitals held every Saturday morning in the Wren Chapel soon recognize how gifted is the player seated at the keyboard.

That player is Mr. James S. Darling, organist and choirmaster at Bruton Church, musical consultant for Colonial Williamsburg, and lecturer in music at the College.

A native of Hampton, Mr. Darling has enjoyed a life-long interest in music. He began to develop his talent on the piano at the age of six and has been playing keyboard instruments ever since.

After graduating from the Phillips-Andover Academy, Mr. Darling received bachelor degrees from Yale University in piano and music theory. He earned a Master's in organ from the University of Michigan School of Education.

Mr. Darling joined the staff of Bruton Parish in the fall of 1961 and his association with the College began soon after. One of his earliest recitals was given at the inauguration of former William and Mary President Davis Y. Paschall.

Mr. Darling was especially pleased to return to the Tidewater area because of his interest in colonial history. In keeping with his desire to discover and preserve the past, Mr. Darling says the Saturday morning recitals in Wren Chapel are offered in the spirit of the regular demonstration recitals that used to be performed in Bruton Parish Church. These recitals were begun after Bruton Parish installed its organ in 1755 and employed the well-known Peter Pelham as organist.

To describe this spirit, Mr. Darling quotes a Williamsburg resident who wrote forty years later: "A week rarely passes in which a number of the inhabitants do not assemble . . . at church while the ancient organist or some of his pupils perform."

His work in historic Williamsburg has involved Mr. Darling not only in developing a repertoire of colonial music but also in restoring the famous Wren Chapel organ to its present authentic setting. According to Mr. Darling, the organ is an instrument with a history all its own.



Experts ascribe the Wren Chapel organ to John Snetzler, 1710-1785. Mr. Darling says the pipes, case, windchest, bellows, reservoir, and many internal parts all date from the eighteenth century. He says Noel Mander, preeminent restorer of English organs, obtained the organ from the Kimberly House in Norfolk, England, and put it in good playing order. Mr. Darling and Mr. John Graham, chief curator of Colonial Williamsburg in charge of purchasing, suggested placing the organ in the Wren Chapel.

Mr. Darling explains that the Chapel plans show a clear design for a back gallery, which was the usual location for an organ in a colonial chapel or an English University chapel. Thus, he says, the 18th century organ is now being played in a location for which it was clearly designed.

Mr. Darling's College responsibilities have expanded, due to the increased number of organ students. In addition to giving organ lessons, Mr. Darling also supervises two part-time organ instructors. Because the College doesn't own an organ suitable for teaching, Mr. Darling and his associates instruct their students on neighborhood church organs. In the future, Mr. Darling hopes to see the College secure not only a teaching organ but also a practice instrument or two.

Mr. Darling is married and the father of three boys and two girls. Though all of his children play keyboard instruments, he says it is too early to tell whether any of them will follow his footsteps and devote their professional lives to music. His wife, Mary Lee, is a native of Gloucester and is currently enrolled as a student in the School of Education.

Mr. Darling says he has no real favorite among his many occupational activities. In fact, he considers their very diversity to be their most valuable asset, because it enables him to meet many different kinds of people. "It is these wonderful people," he feels, "that have been most fun to work with."

Jr. Year Abroad

A question and answer period will be held on Monday, Nov. 25, at 8 p.m. in the conference room of Swem Library for all students interested in the William and Mary Junior Year Abroad in France program at Montpellier.

The program will be conducted by Associate Professor Luke Martel. Mr. Martel returned recently from a seven weeks' stay in France, where he made final arrangements for the Junior Year Abroad participants.

FACULTY NEWS

ECONOMICS

Carlisle Moody, assistant professor, Martin Garrett, professor, and Samuel Baker, associate professor, collaborated with Richard H. Bigelow of Old Dominion University over the summer on a report for the U. S. Department of Transportation entitled, "Feasibility Study of Inter-City Transit Via Southern R/W, Norfolk and Virginia Beach Corridor." The paper reports a benefit-cost study of rail rapid transit between Virginia Beach and downtown Norfolk. The report will be released through the National Technical Information Service.

GOVERNMENT

Alan J. Ward, associate professor, published an article, "Cabinet Government and Political Power in the Irish Republic," in the fall issue of *Irish University Review*. In recent months he has reviewed the following books: J. D. B. Miller, *Survey of Commonwealth Affairs; Problems of Expansion and Attrition, 1953-1969 (Choice)*; Richard Rose, *Politics in England (Choice)*; J. Bowyer Bell, *The Secret Army: A History of the I.R.A. (Perspective)*. Mr. Ward was an invited participant to the University of North Carolina Institute for Research in the Social Sciences symposium on "Urbanization in Ireland," Sept. 23-26.

Assistant Professor Joseph A. Miri has been chosen a member of the Arrangements Committee of the Virginia chapter of the American Society for Public Administration (ASPA). The committee will make plans for next year's meetings of the Southern Regional Conference of ASPA, which will be held in Williamsburg in October of 1975. Mr. Miri was also re-elected to his second term as a member of the Executive Council of Public Administration Fellow with the U.S. Environmental Protection Agency.

HISTORY

Professor Richard M. Brown was chairman of the program committee for the annual meeting of the Southern Historical Association at Dallas, Nov. 6-9. John E. Selby, professor and graduate dean of arts and sciences, chaired a session on North American Slavery in a Revolutionary Age, and Kevin P. Kelly, assistant professor, read a paper on "The Structure of Household Labor in Late Seventeenth-Century Virginia."

Thaddeus Tate, professor and director of the Institute of Early American History and Culture (IEAHC), Michael McGiffert, professor, Norman S. Fiering, lecturer and member of the IEAHC, John Selby, Kevin Kelly and Russell Menard, assistant professor, attended the Conference on The Seventeenth-Century Chesapeake at the University of Maryland, Nov. 1-2. The conference, the 32nd of the series on early American history, was sponsored by the IEAHC, by the University of Maryland's history department and by the Saint Mary's City Commission. Kevin Kelly contributed a paper on "Political Order in Surry County, Virginia, 1682-1703," and Russell Menard was co-author of "Immigration and Opportunity: Servants and Freeman in Early Colonial Maryland."

MODERN LANGUAGES

Ronald St. Onge, assistant professor, participated in "Surrealism—A Celebration," Nov. 7-9 at the Pennsylvania State University. The event marked the observance of the fiftieth anniversary of the *Manifesto of Surrealism* and was attended by artists and scholars from Europe and South America.

PSYCHOLOGY

A chapter entitled, "Lateral Dominance as a Determinant of Response Ordering," by E. Rae Harcum, professor, will appear in a forthcoming book to be published by Cambridge University Press. The book, *Asymmetric Functioning of the Brain*, edited by Prof. Marcel Kinsbourne of the University of Toronto, was first intended to report the proceedings of an international conference at Oxford. It was later expanded to include broader discussions of the selected topics. Chapters in the book were written by authorities from Italy, France, the United Kingdom, Canada, and the United States.

"Cognitive Appraisal of Stress and Schizophrenic Subtype," an article by Glenn Shean, associate professor, Christina Faia, research associate, and Eileen Schmaltz, former graduate student, has been published in the *Journal of Abnormal Psychology*, 1974, 83, 523-528. The research reported was conducted under the auspices of the College and the Psychiatric Research Institute at Eastern State Hospital. The research was funded by a grant from the National Aeronautics and Space Administration. Ms. Schmaltz, who received her M.A. from the College, is now a doctoral student in clinical psychology at Vanderbilt University.

PHYSICS

The following papers were presented by physics faculty and graduate students at the annual meeting of the Division of Plasma Physics of the American Physical Society, Albuquerque, New Mexico, Oct. 28-31.

"Ion Acceleration at an Anode Sheath," S. L. Hsieh, S. Peter Gary, and H. W. Bloomberg, *Bull. Am. Phys. Soc.* 19, 861 (1974).

"Ion Acceleration in a Plasma Focus," S. Peter Gary and Frank Hohl, *Bull. Am. Phys. Soc.* 19, 945 (1974).

"Thermal Relaxation of a Plasma in a Uniform Magnetic Field," J.-Y. Hsu, G. Joyce, D. Montgomery, L. Turner and G. Vahala, *Bull. Am. Phys. Soc.* 19, 880 (1974).

"Transmission Line Simulation of Ion Waves in a Streaming Plasma," Walter F. Schoellmann and F. R. Crownfield, Jr., *Bull. Am. Phys. Soc.* 19, 970 (1974).

"Reflection of Ion Acoustic Waves from a Plasma Sheath," I. Alexeff and S. Peter Gary, *Bull. Am. Phys. Soc.* 19, 970 (1974).

"A New Interpretation of Bernstein-Greene-Kruskal Theory for One-Dimensional Vlasov Plasmas," F.R. Crownfield, Jr., *Bull. Am. Phys. Soc.* 19, 940 (1974).

The following papers have been published:

"Electron Detachment in Low Energy Collisions of H⁺ and D⁺ with He," S. K. Lam, J. B. Delos, R. L. Champion, and L. D. Doverspike, *Phys. Rev. A* 9, 1828 (1974).

"Studies of the Potential Curve Crossing Problem III. Collisional Spectroscopy of Close Crossing," J. B. Delos, *Phys. Rev. A* 9, 1626 (1974).

Research by William and Mary physicists has been mentioned in the Oct. 24 issue of the *New Scientist*, which is probably the world's best newsweekly for science and technology. The research concerns using the decays of positive muons to measure internal magnetic fields in type II superconductors.

Colloquium

Harold Weitzner of Courant Institute of New York University will conduct the physics colloquium in Small 109 at 4:30 p.m. on Nov. 22. He will speak on "Problems in Plasma Stability." Coffee will be served in the conference room at 4 p.m.

SCHOOL OF BUSINESS

ADMINISTRATION

Wagih Dafashy, associate professor, John Quinn, professor, James E. Smith, associate professor, and Stuart Williams, assistant professor, attended an accounting conference entitled "Meeting with the Educators" in Richmond on Nov. 1. The meeting was sponsored by the Virginia Society of CPA. Mr. Smith participated in a panel discussion of "What the Colleges Provide/What the Accounting Profession Needs."

The entry on Virginia, included in the fifteenth edition of the *Encyclopaedia Britannica*, was written by Charles L. Quittmeyer, dean.

SCHOOL OF EDUCATION

Donald R. Lashinger, associate professor, and John F. Lavach, associate professor, will participate in a symposium entitled "Federal Support of Reading: Past, Present and Future," which is part of the Southeastern Regional Conference of the International Reading Association's annual meeting in Washington, Nov. 14-16. Between three and five thousand people are expected to attend.

Mr. Lashinger will present "A Speculative View of the Education Amendment of 1974." Mr. Lavach will treat "The Historical View: Research Training and Demonstrations."

Earlier this month, Mr. Lashinger met in Williamsburg with Tidewater members of the Association in an informational exchange session which was attended by Dean James M. Yankovich, Associate Dean Robert C. Jones, and Eugene Edelman, assistant professor.

LAW SCHOOL

William F. Swindler, John Marshall Professor of Law who is Visiting Distinguished Professor at the University of Oklahoma this semester, delivered an all-university lecture on Nov. 8 on the subject, "The Constitution After Watergate." An article based on the lecture will appear in an early issue of the *Oklahoma Law Review*.

Swindler participated last week in ceremonies in the United States Supreme Court marking publication of the first volume of the Papers of John Marshall. He is chairman of the Chief Justice's committee on Supreme Court history.

Jerome Leavell, associate professor, has had an article accepted for publication by the Walter F. George School of Law, Mercer University. It is entitled "Professional Sports and the Anti-trust Laws."

STAFF NOTES

STUDENT AFFAIRS OFFICE

The 1974 Conference of the Regional Association for Women Deans, Administrators and Counselors was held in Williamsburg, Nov. 10-12. Representing William and Mary were Susan J. Albert, associate dean for student development, and Carolyn L. Moseley, associate dean for administration and special programs. John D. Morgan, associate dean for residence hall life, and Samuel Sadler, dean of students, also attended some of the meetings as observers.

SWEM LIBRARY

Eleven Swem Library staff members attended the Virginia Library Association meeting at the Homestead at Hot Springs, Nov. 14-16. Those attending were William C. Pollard, librarian; Beth A. Blier, assistant reference librarian; Kathryn Blue, assistant catalog librarian; Mary Lou Cobb, catalog librarian; Linda Friend, reserve room librarian; Merle Kimball, assistant catalog librarian; Leah Rae Miron, assistant catalog librarian; Sandra K. Peterson, documents librarian; Paul A. Roy, VARC librarian; Dortha Skelton, reference librarian; and Ailene A. Zirkle, acquisitions librarian. Ms. Peterson participated in a colloquy on state documents. Ms. Cobb is outgoing secretary of VLA.

COUNSELING CENTER

Mary Beth Surma has been promoted from Clerk D to Psychology Test Technician in the Psychological Counseling Center.

PRESIDENT'S OFFICE

A review by Jerry Van Voorhis, assistant to the president, was published recently in *History: Review of the New Books*. Mr. Van Voorhis reviewed Douglas H. Robinson's *The Dangerous Sky: A History of Aviation Medicine*.

Faculty Party Set Friday

The Faculty Club will sponsor a cocktail party Nov. 22 at the Alumni House from 5:30 - 7:30 p.m.

Department chairmen and deans of the Schools of the College will be guests of the Club for the party.

Tickets will be sold at the door.

Membership for the year is \$5. This entitles members (faculty and administration) and husbands, spouses or guests, to tickets for each party for \$2 per person, non-drinkers \$1 per person. Non-members may buy tickets at \$3.50 each, non-member non-drinkers, at \$2 per person.

The Lafayette restaurant will offer a 15 percent discount for dinner that evening to faculty club members attending the party.

Londoners Visit

Mr. Claude Blair of London's Victoria and Albert Museum and Mrs. Blair visited in Williamsburg recently, after Mr. Blair had delivered a lecture at the Smithsonian Institution.

Mr. Blair is one of the world's leading arms historians and is the author of numerous books on the history and development of arms and armour.

He and his wife were guests of James Lavin, associate professor, modern languages.

Student Address Center Established on Campus

To meet the need for registering and maintaining current student addresses and other student directory information, a center for student address information has been established, Dean James C. Livingston has announced.

The center will be maintained in the office of the Associate Dean of Students for Administration and Special Programs, under the supervision of Dean Carolyn Moseley.

In accordance with the new procedure, undergraduates will register changes in information, other than in on-campus housing assignments, by coming to Dean Moseley's office and completing the form available. Changes in housing which relate to rental fees—change in room, change in status from resident to day or day to resident—will be processed as usual through the Office of Residence Hall Life and sent along to Dean Moseley's office for transmittal to the Computer Center.

Graduate students are to register changes through their individual schools, and the forms are to be forwarded routinely to Dean Moseley's office for transfer to the Computer Center.

Arrangements have been made to pass these slips along twice a week to Mrs. Betty Greene in the Computer Center, the person designated to oversee the input of the information for the computer. Mrs. Greene will provide Dean Moseley's office with a print-out of the changes as recorded for verification and sets of labels of the changes prepared for the Registrar's Office and the Treasurer's Office, these labels to be attached to their records to keep them up to date.

This procedure is now in effect. Questions may be directed to Dean Moseley.

Phone Costs Detailed

A number of inquiries have been directed to the Business Office recently concerning the costs involved in various types of telephone service.

Dennis K. Cogle, assistant to the vice president for business affairs, has furnished the following list of costs in response to such inquiries.

To install a plain desk set	\$25.00
To install a key set (button and lights)	\$50.00
Monthly charge, plain set	\$1.80
Monthly charge, key set:	
With 2 numbers	\$2.95
With 3 numbers	\$3.45
With 4 numbers	\$3.95
Monthly charge for button and buzzer	\$.45 each,
(or \$.90 for one such set)	
Monthly charge for dial intercom:	
\$5.75 for a 9-number system, plus	
\$1.00 additional for each instrument	
in the system	
To make any type of inside move:	
Plain desk set	\$25.00
Key set	\$50.00
To change cords:	
Plain set, 13-foot cord	\$30.00
Key set, 9-foot cord	\$35.00
Key set, 13-foot cord	\$37.00
To change from simple set to key set	\$38.00
To add to a key set	\$23.00 per additional number

Arrangements for telephone installation and service may be made through Mr. Cogle.

SECURITY LOG

11-4-9:25 p.m.	Suspicious male reported trespassing in Chandler Hall. Search failed to locate subject.
11-5-7:48 p.m.	Suspicious persons reported trespassing between Chandler and Landrum Halls. Subjects located and issued verbal trespass warnings.
11-5-9:10 p.m.	Bicycle previously reported stolen located on east side of PBK Hall. Owner notified and recovery reported to Williamsburg Police Department.
11-7-1:30 a.m.	Two male students observed exploding pyrotechnics from Camm Hall window. Subjects referred to Mr. Gunson.
11-9-11:15 p.m.	Theft of auto reported from parking lot between Bryan Complex and Cary Field. Williamsburg Police Department notified. WPD later found three suspects driving car and charged them with grand larceny.
11-10-6 p.m.	Disorderly conduct of male student reported in Jefferson Hall. Incident referred to Dean Sadler.
11-11-9:15 p.m.	Coed confronted by male subject at corner of North Boundary Street and Richmond Road. Search failed to locate subject.
11-12-10 a.m.	Two juvenile females reported loitering around JBT for several weeks. Subjects located in Campus Center and identified. Parents of subjects notified.
11-13-12:05 a.m.	Cigarette machine in DuPont Hall basement vandalized and an undetermined amount of cigarettes taken. Vending machine company notified.
The following items were reported stolen and are under further investigation:	
11-6-2:45 p.m.	3-speed bicycle, city tag number 4609, from Jefferson Hall bicycle area.
11-8-11:45 p.m.	Antenna and steel shock spring from car parked on New Campus Drive.

OFFICE OF DEVELOPMENT

NATIONAL SCIENCE FOUNDATION

NSF's Office of Science Information Service (OSIS) is currently accepting applications for FY 1976 assignments as Scholar-in-Residence under provision of the Intergovernmental Personnel Mobilization Act. Assignments are for 4-month periods, between July 1, 1975, and June 30, 1976, and include completion of an approved research project and professional interaction with members of the OSIS staff. To qualify for this assignment, an individual must currently hold a position with a college or university or State or local government agency.

The purpose is to augment OSIS' staff analytical capability by providing the assignee an opportunity for independent research of an interdisciplinary nature within a Federal Government science support agency. Inquiries should be forwarded to Robert S. Cutler, OSIS, NSF, Washington, D.C. 20550. Applicants should include a vita and description of research interest.

NATIONAL INSTITUTES OF HEALTH

The Swedish Medical Research Council will make available in 1975 three research fellowships to qualified biomedical scientists who are U.S. citizens. They will provide research experience and training in Sweden at the postdoctoral level in basic or clinical sciences related to health.

Candidates must have a doctoral degree and must have been engaged in independent responsible research. They must present evidence of aptitude and promise in basic science or clinical research with an active interest in pursuing a research career.

It is the applicant's responsibility to arrange for his research training with the preceptor in Sweden under whom he will train. Fellowships will normally extend for 12 months after the starting date. The fellowship award will cover payment of a stipend and transportation expenses.

The deadline for receipt of completed applications is January 31, 1975. An NIH committee will review applications and forward nominations to the Swedish Medical Research Council. Final selection will be made at the May 1975 meeting of the council and nominees will be notified of the results thereafter.

Further information may be obtained from Dr. Eugene L. Walter, Jr., Swedish Medical Research Fellowship Program, Fogarty International Center, NIH, Bethesda, Maryland 20014.

NIH provides National Research Service Awards to postdoctoral individuals for training experiences in specified areas of biomedical and behavioral research. Awards are made to individual applicants, for specified training proposals, selected as a result of a national competition. Provisions of this announcement are tentative in nature and their final applicability will depend upon their being consistent with final regulations, which are now being developed and will be published in the Federal Register.

Applicants must be citizens or non-citizen nationals of the United States, or have been lawfully admitted to the United States for permanent residence. As of the beginning date of the proposed fellowship, an applicant must have received a Ph.D., M.D., D.D.S., D.O., D.V.M., O.D., Sc.D., D.Eng., D.N.S., or equivalent domestic or foreign degree. Proposed study must encompass biomedical research training with an opportunity to carry out supervised research in specified areas, and offer opportunity to research health scientists, research clinicians, etc., to broaden their scientific background, or to extend their potential for research in health-related areas. Applicants must apply in one of the research discipline areas specified by NIH.

For further information regarding specified research disciplines, period of support, stipends and allowances, deadlines, and application; contact Mrs. Neiman at Ext. 518.

ATOMIC ENERGY COMMISSION UNIVERSITY LABORATORY PROGRAMS

Faculty Research Participation—Summer appointments and short-term visits during the year for participation in ongoing research activities at Atomic Energy Commission laboratories in Oak Ridge, Puerto Rico, and Savannah River.

Laboratory Graduate Participation—Opportunities for master's and doctoral degree candidates to conduct year-round research for thesis and dissertation in established programs at AEC and other approved laboratories. Short research visits to a laboratory, to perform thesis parts, under a special ORAU contract.

Undergraduate Research Training—Ten-week appointments for college juniors, primarily during the summer, for independent study and research on problems in the biological, environmental, and physical sciences, in engineering, and in mathematics.

For further information and application material, please write:

University Programs Office
Oak Ridge Associated Universities
P.O. Box 117
Oak Ridge, Tennessee 37830.

Graduate School Opportunities

Students who are residents of Virginia and of other southeastern states may qualify for admission to certain graduate programs in other states on an in-state tuition basis.

Participating southern states have formed an Academic Common Market which is an interstate agreement for sharing academic programs. Initial arrangements provide for the sharing of over 120 unusual graduate programs.

Virginia's Common Market coordinator is Gordon K. Davies, Associate Director, State Council of Higher Education, 10th floor—911 E. Broad Street, Richmond, Va. 23219.

Residents of Alabama, Arkansas, Florida, Georgia, Kentucky, Louisiana, Maryland, Mississippi, North and South Carolina, Tennessee, Virginia and West Virginia should contact Mr. Davies for details.

HEATING TO BE TURNED OFF FOR NECESSARY REPAIRS

There will be an interruption in the heat and hot water provided to all buildings in the new Campus area from noon on Wednesday, November 27 to noon on Friday, November 29.

During this time repairs will be made to the high temperature hot water heating piping system located near the new building for Chemistry and Philosophy. The piping system has developed a large leak causing a loss in thermal heat distribution and a corresponding loss in energy.

Every effort will be made to expedite the needed repairs but personnel occupying buildings in the new campus area should be prepared to be without heat and hot water during this time. We hope the inconveniences caused will be minimized by having the repairs done over the holiday weekend.

The buildings that will be affected during this outage are:

- Andrews Hall
- Commons Dining Hall
- DuPont Student Residence
- Fraternity Complex
- Hugh Jones Hall
- Millington Hall
- Morton Hall
- Botetourt Residences
- Phi Beta Kappa Hall
- Swem Library
- William and Mary Hall
- William Small Hall
- Yates Hall

William J. Carter
Vice President for Business Affairs

Personnel Bulletin

The following positions at the College are or will be vacant. Qualified employees who wish to be transferred to these positions may receive additional information at the Personnel Office. The College is an Equal Opportunity Employer. Accordingly, women and minority employees are encouraged to apply for those positions for which they feel they are qualified.

- Executive Housekeeper B
- Clerk—Stenographer B (2 positions)
- Clerk—Stenographer C
- Clerk—Typist B
- Institutional Policeman

NEW CENTEX HEAD

continued from first page

The new Centex president was dean of academic affairs at the University of Michigan's Flint campus before joining William and Mary this year. A native of Richmond, he holds degrees from the University of Richmond, University of Virginia and University of Michigan.

CLASS PROFILE

continued from first page

The list of secondary school activities from the freshman class profile reveals a rise in the number of honor graduates over last year and a continued diversity of activities. Some 141 were valedictorians or salutatorians of their high school classes; 343 were National Merit finalists and commendation winners; over 591 were members of service clubs; 732 participated in high school publications. Over 1461 indicated participation in high school athletic teams.

Karate Clubs Meet in Tourney

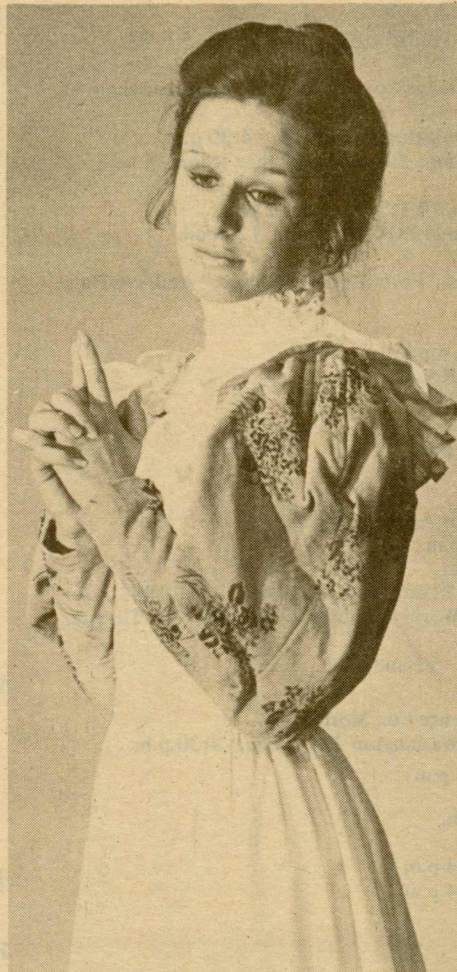
The public is invited to attend the annual Virginia Open Karate Championship at Blow Gymnasium, Nov. 24, from 11:30 a.m. to 5 p.m.

Sunday's tournament is sponsored by William and Mary's Karate Club. Clubs from Universities in Maryland, North Carolina and Virginia are expected to compete.

MISS CLOSE, '74 GRADUATE, STARS ON BROADWAY

From starring roles in the William and Mary Theatre to lead actress in a current play on Broadway has taken Glen Close (Wade), '74, just six short months.

Miss Close opened last week at the Helen Hayes Theatre in New York as Angelica, a leading lady in the New Phoenix Company's production of William Congreve's "Love for Love."



Miss Close

She took over the lead from the role of understudy when actress Mary Ure was unexpectedly fired from the play. Directed by Harold Prince, the play opened in New York on Nov. 11 and was reviewed by respected veteran New York Times theatre critic Clive Barnes. Not one known to dole out excessive praise, Barnes called Miss Close "a touching actress... whose warning hints of love throughout the play, a blush on a rose petal, were admirably done."

Helen Hayes was in the audience for the performance, and came backstage afterwards to congratulate Miss Close.

While at William and Mary, Miss Close was a member of Phi Beta Kappa, Mortar Board honorary leadership society, and she held title roles in many W&M Theatre productions. From her first College performance as Olivia in Shakespeare's "Twelfth Night," to her final role as Dol Common in Ben Johnson's "The Alchemist," Miss Close was one of the most sought after players in every stage production. Portraying a variety of characters ranging from Gertrude in "Hamlet" to Sally Bowles in "Cabaret," Miss Close had some of the most demanding roles the theatre can offer.

Howard Scammon, professor of theatre and speech who directed Miss Close in many productions, cites her devotion to finding the essence of each character she portrays as the prime element of her greatness.

"It just seems as though she is able to become a part of the character. She mentally, physically and vocally gives you a new character on stage with every performance." According to Scammon, the actress is "the most talented person the William and Mary Theatre has had since 1926 when it came into existence." While at William and Mary, Miss Close received nothing but acclaim for her acting.

Perhaps this break is the chance she needs to demonstrate the talent that overwhelmed Williamsburg theatre buffs, the chance to succeed as a professional.

Newcomers Plan Party

A dinner theatre party has been planned by the Newcomers of the College Women's Club for Friday, Dec. 6.

The evening's entertainment will include dinner at the Hilton 1776 and the Williamsburg Player's production of "Outward Bound" by Sutton Vain. Refreshments will follow the play.

All members are invited to join the Newcomers.

Reservations should be made by Wednesday, Nov. 20, with Mrs. David Finifter at 220-0935.

CAMPUS EXHIBIT

John Weaver Exhibit, Botetourt Museum, Swem Library, Monday-Friday, 8 a.m. - 5 p.m.; Saturday, 9 a.m. - 1 p.m. Exhibit ends Dec. 1.

Freshman Complex Is Lively Community

Within the College's current residence hall life program, the Jamestown Road complex is proving an enthusiastic participant.

The community, composed of Hunt, Taliaferro, Tyler and Jefferson Halls, has initiated a number of joint projects to benefit its residents.

A weekly newsletter, the "John Jargon," keeps students up to date on events going on in the complex. The newsletter has no regular distribution. To conserve paper, it is posted prominently throughout the complex.

News pertaining to the complex, trivia questions and announcements of coming events make up the "Jargon."

Intramural football and volleyball teams were formed earlier this fall, and



Presidents of the hall councils in the Jamestown Road Complex l to r, Rob Sedgewick, Tyler; Patience Dean, Jefferson; John Noons, Taliaferro; and Dave Seitz, Hunt.

the spirit of competition has made many exciting games.

Living-learning sessions of a more academic-cultural nature have also been held.

Although directions which future programs will take have not yet been clearly defined, joint committees were recently established to explore such possibilities as a talent show by and for members of the complex, continued intramural competition, bike hikes and a program of guest speakers.

Students went all out on a Halloween Party last month, which included trick-or-treating, pumpkin carving, apple dunking and costume judging. Spontaneous get togethers are also frequent.

THE CALENDAR

Events of interest to the College community are listed as scheduled on the Campus Calendar, Campus Center, Ext. 557.

TUESDAY, NOVEMBER 19

Placement Office Interviews: New York University Graduate School of Business, Morton 104.
School of Education Basic Grants Training Projects State Workshop: CC Rooms A&B, 9 a.m. - 4 p.m.
Placement Office Banking Career Seminar: Call Ext. 605 for location, 3:30 p.m.
Interhall: CC Theatre, 4 p.m.
WRA Softball Practice: Women's Intramural Field, 4 p.m.
WMCF Prayer Meeting: Swem G2, 5 p.m.
Free University: Beginning Frisbee, Yates Field, 6 p.m.
Panhellenic Council: CC Room C, 6:45 p.m.
Catholic Mass: Wren Chapel, 7 p.m.
SA Senate Meeting: CC Theatre, 7 p.m.
Christian Science Organization: CC Gold Room, 7:30 p.m.
Films: "Evolution of a Yogi" and "The Illusion of Separateness," Asia House, 8 p.m.

WEDNESDAY, NOVEMBER 20

Placement Office Interviews: New York Life Insurance Co. and the UVa McIntire School of Commerce, Morton 104.
Teacher Placement Interviews: Hampton, Va., Washington 211, 9 a.m. - 4:30 p.m.
National Center for State Courts Directors Meeting: Swem Conference Room, 8 a.m. - 3 p.m.
Residence Hall Life R.A. Training: CC Gold Room, 10-11 a.m. and 1-2 p.m.
Residence Hall Life Advisory Council Lunch Meeting: CC Gold Room, 12 noon.
Wednesday Lunch Group: CC Room D, 12 noon.
Films on Art Series: "Art of the Middle Ages" and "From Doric to Gothic," Andrews Hall, Room 101, 3 p.m.
Coffee Hour: French House, 3:30 p.m.
WRA Softball Practice: Women's Intramural Field, 4 p.m.
Committee of Graduate Study: Swem Conference Room, 4 p.m.
Lesson in Sume-i Art: Asia House, 5 p.m.
Delta Phi Alpha Initiation: Wren Chapel, 5:30 p.m.
Delta Phi Alpha Reception: Wren Great Hall, 6:30 p.m.
Circle K: CC Rooms A&B, 7 p.m.
W&M Bridge Club: CC Sit 'n Bull Room, 7 p.m.
Free University: Beginning Photography, CC Rooms A&B, 7:30 p.m.
Project Plus Forum: Millington Auditorium, 7:30 p.m.
Delta Omicron Student Recital, CC Ballroom, 8 p.m.
Lecture by F. Clark Howell: "The Omo Research Expedition, 1966-1973: An Interdisciplinary Study of Earliest Man in His World in Southern Ethiopia," CC Theatre, 8 p.m.
Communal Meditation: St. Bede's Church, 11 p.m. - 12 midnight.

THURSDAY, NOVEMBER 21

Placement Office Interviews: New York Life Insurance Co., Morton 104.
Teacher Placement Interviews: York County, Va., Washington 211, 9 a.m. - 4:30 p.m.
Transportation Appeals Board: CC Room C, 12:30 p.m.
Board of Visitors: Swem Library, 1-6 p.m.
Spanish Discussion Group: Spanish House, 3:30 p.m.
BSA: CC Room C, 3:45 p.m.
Procedural Review Committee: Conference Room, 4 p.m.
WRA Softball Practice: Women's Intramural Field, 4 p.m.
Episcopal Holy Communion: Wren Chapel, 5 p.m.
Chess Club: CC Room C, 7 p.m.
Mortar Board: CC Room D, 7 p.m.
W&M Sport Parachute Club: Blow Gym, Room 5, 7 p.m.
YAF Film: "Politics: The Conservative Viewpoint," Botetourt Theatre, 7:30 p.m.
Panel on Insurgency Movement in Southeast Asia: Asia House, 7:30 p.m.
Phi Delta Kappa Panel Discussion: Millington Auditorium, 8 p.m.
Deutschlandspiegel and Cultural Films: German House, 8 p.m.
Concert Series: Interlochen Jazz Quintet, PBK, 8:15 p.m.
Botetourt Bibliographical Society: Lecture by Prof. M. Boyd Coyner, Jr., "John Hartwell Coker (1780-1866): The Patrician as Social Critic," Swem Rare Book Room, 8:15 p.m.

FRIDAY, NOVEMBER 22

Placement Office Interviews: Wake Forest University Babcock Graduate School of Management, Morton 104.
Teacher Placement Interviews: Essex-Middlesex, Saluda, Va., Washington 211, 9 a.m. - 3 p.m.
KKG Reception for Law and Graduate Students: KKG House, 3 - 5 p.m.
Board of Visitors: Swem Rare Book Room, 9 a.m. - 6 p.m.
Residence Hall Life R.A. Training: CC Gold Room, 4 p.m.
Faculty Club Cocktail Party: Alumni House, 5:30 p.m.

WMCF: CC Sit 'n Bull Room, 6 p.m.
Scripture Study and Shared Prayer: St. Bede's Church Basement, 6:30 p.m.
Hillel: Temple Beth El, across from PBK, 7:30 p.m.
SA Films: "Pat Garrett and Billy the Kid," 7:30 p.m. and "Charlie Chan in London," 9:30 p.m., W&M Hall.
Pi Kappa Alpha Dance: CC Ballroom, 9 p.m. - 1 a.m.

SATURDAY, NOVEMBER 23

Board of Visitors: Swem Rare Book Room, 8:30 a.m.
Circle K Tutoring Program: Washington 203A, 204, 303, 304, 9 a.m. - 12 noon.
Organ Recital: Wren Chapel, 11 a.m.
Gamma Phi Beta Fall Pledge Dance: CC Ballroom, 9 p.m. - 1 a.m.
Phi Mu Alpha Sinfonia Dance: CC Theatre, 9 p.m. - 1 a.m.

SUNDAY, NOVEMBER 24

Karate Club Tournament: Blow Gym, 11:30 a.m. - 5 p.m.
Eucharistic Liturgy followed by Dinner: St. Bede's Parish Center, 5 p.m.
Coffee Hour: German House, 5 p.m.
CaMU Forum, Wren Chapel, 8 p.m.

MONDAY, NOVEMBER 25

Teacher Placement Interviews: Chesapeake, Va., Washington 211, 9 a.m. - 4:30 p.m.
Free University: Colonial Williamsburg Seminars, Information Center, 3 p.m.
Tri Delta Founder's Day Banquet: CC Ballroom, 5:30 p.m.
Free University: Beginning Photography, CC Rooms A&B, 7:30 p.m.
Free University: Beginning Guitar, CC Room C, 8 p.m.
Baha'i Fireside: Wesley Foundation, 8 p.m.
Lecture by JeRoyd X Greene: "Class and Race: Parallels and Contrasts," Millington Auditorium, 8 p.m.
Film: "Japan-East is West," Asia House, 8 p.m.

TUESDAY, NOVEMBER 26

Placement Office Interviews: Harvard University, MBA Program, Morton 104.
Faculty Affairs Committee: Swem Conference Room, 3:30 p.m.
Interhall: CC Theatre, 4 p.m.
WRA Softball practice: Women's Intramural Field, 4 p.m.
WMCF Prayer Meeting: Swem G2, 5 p.m.
Free University: Beginning Frisbee, Yates Field, 6 p.m.
SA Senate Meeting: CC Theatre, 7 p.m.
Catholic Mass: Wren Chapel, 7 p.m.
Christian Science Organization: CC Gold Room, 7:30 p.m.

WEDNESDAY, NOVEMBER 27

Residence Hall Life R.A. Training: CC Gold Room, 10 - 11 a.m., 1 - 2 p.m.
Residence Hall Life Advisory Council Luncheon: CC Room C, 12 noon.
Wednesday Lunch Group: CC Room D, 12 noon.
Thanksgiving Holiday Begins: 1 p.m.
Piano Recital: Linn Glisson, PBK, 8:15 p.m.
Communal Meditation: St. Bede's Church, 11 p.m. - 12 midnight.

THURSDAY, NOVEMBER 28

Thanksgiving Holiday.

FRIDAY, NOVEMBER 29

Scripture Study and Shared Prayer: St. Bede's Church Basement, 6:30 p.m.
Hillel: Temple Beth El, across from PBK, 7:30 p.m.

SATURDAY, NOVEMBER 30

Organ Recital: Wren Chapel, 11 a.m.
Basketball: W&M vs. Pace, W&M Hall, 7:30 p.m.

SUNDAY, DECEMBER 1

Eucharistic Liturgy followed by Dinner: St. Bede's Parish Center, 5 p.m.

MONDAY, DECEMBER 2

Thanksgiving Holiday Ends: 8 a.m.
Placement Office Interviews: Tobe-Coburn School for Fashion Careers, Ltd., Morton 104.
Free University: Colonial Williamsburg Seminars, Information Center, 3 p.m.
Free University: Beginning Photography, CC Rooms A&B, 7:30 p.m.
Basketball: W&M vs. Haverford, W&M Hall, 7:30 p.m.
Free University: Beginning Guitar, CC Room C, 8 p.m.
Lecture by JeRoyd X Greene: "The Organized Bar's Contributions to Repression of Free Speech by Lawyers," Millington Auditorium, 8 p.m.

CLASSIFIED ADVERTISEMENTS

FOR SALE

Brand new TV, never uncrated. 12 inch Panasonic, color, with warranty. Call Mike Dobson, Ext. 456 or 229-9043. (11/19)

1889 Mehlin parlor grand piano with bench, \$950, good condition. Child's violin, \$50. Violin, bow and case, \$100. Autoharp, \$30. Rosewood music cabinet, \$75. Call 564-9601 after 6:30 p.m. or anytime on weekends. (11/19)

Girl's 10-speed bike, \$40.00. Call 229-0325 or come by 426 S. Henry St. after 5 p.m. (11/19)

1962 Buick Skylark Convertible. Only 62,000 miles. One owner. \$250. Call 229-0447. (11/19)

S.C.M. Typewriter, portable, hardly used. \$50. Call 229-4508. (12/3)

Farfisa Band Organ, 49 Keyboard organ, complete with Leslie Tone Cabinet, in good condition, \$500. Call 229-2802 after 6 P.M. (11/26)

Yamaha Classical Guitar with case. Brand new; never used. Original price, \$115. Will sell for \$75. Call 229-2958. (11/26)

1974 Vega. AM/FM; 4 speed. Call 220-0922. (11/26)

Ivers & Pond console piano, beautiful condition, \$400. Call 229-0241 after 6 p.m. (11/26)

WANTED

First year law student needs quiet place to live. Call 220-1499. (12/3)

Ride needed to Midwest; in particular, Fayetteville, Arkansas. Need to be there before Dec. 1. Call 220-0639. (11/26)

Male faculty member wishes to rent or sublet furnished apartment for second semester. Please write J. B. Savage, 405 Strafford Ave., Apt. 2B, Wayne, Pa. 19087 (12/3)

Rider wanted to Burlington, Vermont and return for Thanksgiving holiday. Share expenses and driving, stick shift car. Call 564-9668. (11/19)

Male student would like to rent private room. Prefer within walking distance of William and Mary. I have references. Also need a used bike. 3-speed preferred. Call 229-6904. (11/19)

Roommate needed to share 2 BR apt. at Williamsburg East Apts. Available about Dec. 1. \$75/month & utilities - Call Fred Kozak, 220-1499. (11/26)

3-4 bedroom house or apt. Lease to begin preferably Dec. 1 or Jan 1. Contact 220-2623 (11/26)

Student to share two-bedroom apt., \$75/month, plus utilities. 3 miles from campus; A-C; pool; nice kitchen; quiet building. Call 220-0955. (11/26)

A single room off campus--\$70-\$80/month--within walking distance of campus. Need immediately until January 23, 1975. Respond to Brian Ganderson, College Station, General Delivery. (11/19)

FOR RENT

Small house with extra large fenced-in yard near James York Shopping Center. \$195/month. Please call 220-0729 after 7 p.m. or on week-ends.

LOST AND FOUND

Key ring with 12 keys (appr. between Law School and Deli, evening of Oct. 22. If found, please return to Bland Crowder, Law Library.

Lady's gold Bulova watch. Square timepiece with stiff watchband. If found, please contact Sandy at Ext. 364.

One lady's gold Omega wristwatch. Reward offered. Call Ext. 566 anytime. Ask for Heidi.

Lady's wristwatch near Matoaka amphitheatre. To claim, contact John Snyder, Ext. 200, and identify. (11/26)

St. Christophers Medal. Lost 11/8/74. Call Mike Hagon, ext. 358.

MISCELLANEOUS

Qualified riding instruction (English or Western) will be given in exchange for handyman assistance. Call Toano, 564-9891, evenings. (11/19)