

See Pages 3-5
For Actions of Board

William and Mary News

Volume III, No. 24

Tuesday, March 11, 1975

Orchesis Program Features Original Works

Orchesis, the College's modern dance group, will present its annual "Evening of Dance" performance Wednesday, March 19, and Thursday, March 20, at 8:15 p.m. in Phi Beta Kappa Hall.

Project PLUS Schedules Film

An award-winning film, *The Savage Eye*, will be shown for the Project PLUS Forum in Millington Hall on Wednesday, March 12, at 7:30 p.m. A question period following the showing will be moderated by Jay Chambers and Thad Tate. Mr. Chambers is professor of psychology and director of the Psychological Counseling Center, while Mr. Tate is professor of history and director of the Institute of Early American History and Culture at William and Mary.

The film is the story of a young divorcee attempting to come to terms with life in the world of an often grotesque contemporary American city. A New York Times critic described *The Savage Eye* as "a raw, Daumier-like commentary on the disenchanted, the disillusioned, the hopeless, and the lost people of contemporary society."

There is no charge for viewing the film, which is open to the public.

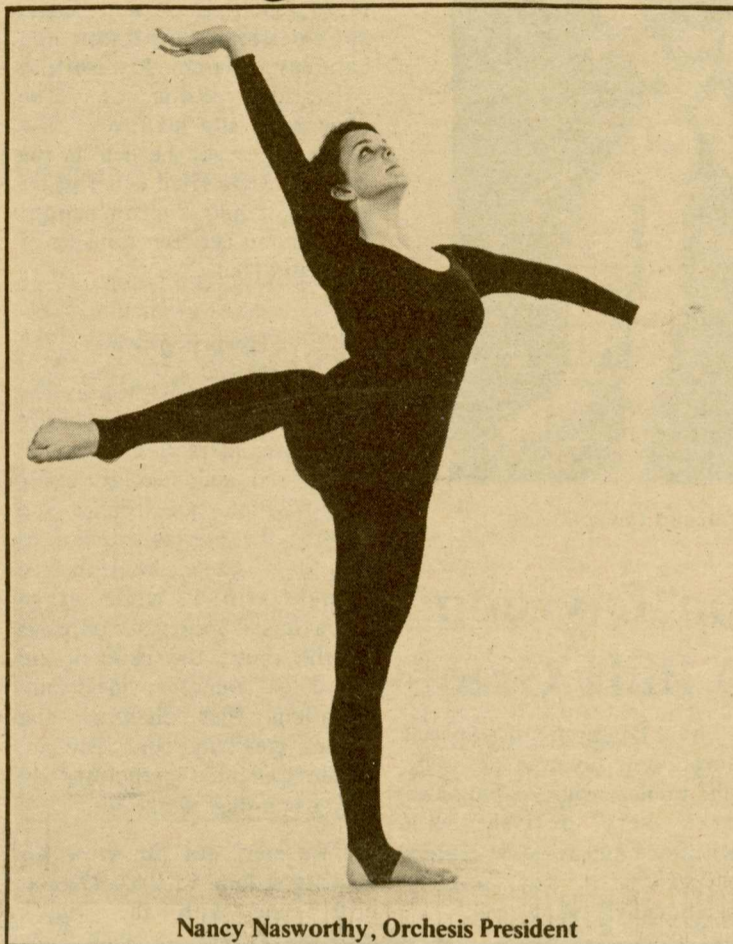
The program features dances choreographed and performed by Orchesis members under the direction of Associate Professors Shirley Roby and Carol Sherman. Many of the performances are accompanied by student musicians, and two of the scores are music composed or arranged by students. There is no admission for the performance, and the public is invited to attend.

"Graphik," choreographed by Meg Lascara as an abstract interpretation of form and line, opens the program. Other works seek to interpret natural phenomena, such as the four seasons in Lynn Melzer's "Seasons Sung" or butterflies in Cathy Meyer's "Lepidoptera."

Nancy Nasworthy, Orchesis president, has choreographed and will perform the only solo number. Entitled "Credo, Credo," it is based on a medieval dance form. She has also choreographed "Earthcome, Skyborne," which is similarly based on primitive dance forms and rituals and will be accompanied by original music composed by Don Zuckerman.

Three poems by Emily Dickinson form the basis for Sally Moren's "In Vespers Cochineal." The works of Chagall inspired Meg Bartenstein's "Chagallesque."

Other dances include "A Child Comes... Innocence is Breath," an evolution of human innocence choreographed by



Nancy Nasworthy, Orchesis President

Diane Hull; Cathy Mapp's "Blues for an Odd Number," a jazz piece composed to Gershwin music; and "Meditations" by Tracy Trentadue, based on three different images of meditations.

The program will conclude with the entire Orchesis company performing "Antiphony," a number choreographed by Diane Hull

and Sally Moren. Orchesis dancers also include Lynn Allison, Barbara Bruno, Marcia Daley, Janet Diggs, Madeleine Herlong, Pat Kearney, Mickey Kersey, Maggie Kneip, Carrie Lukeman, Sherri Manfredi, Mark Martino, Linda Owens, Keith Savage, Lynne Shackelford, Lynn Smith, Leslie Stone, Bonnie Tschirhart and Gita Vasers.

School Receives Grants From Anheuser-Busch

The School of Business Administration has received grants totaling \$10,000 from Anheuser-Busch, Inc., it was announced by Dean Charles L. Quittmeyer.

One grant, of \$5,000, is for the School's unrestricted use. The other, for an equal amount, will fund a series of lectures on the subject of the entrepreneurial system and its significance for American business and the national economy.

Dean Quittmeyer said the unrestricted grant will be used in the School's faculty development and research program.

A committee of faculty and Anheuser-Busch executives has been established to plan for the lecture program, he added. Donald J. Messmer, assistant professor of business administration, is faculty representative to the committee.

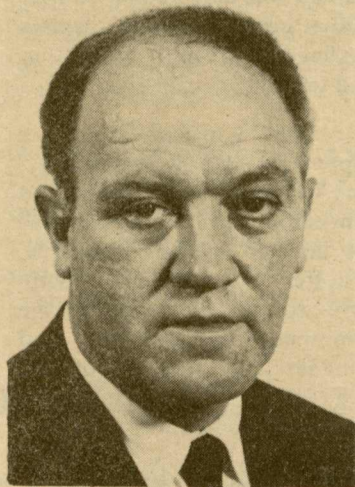
The dean said he was "most grateful to August A. Busch III and his colleagues at Anheuser-Busch for this very tangible additional evidence of support for the School of Business Administration. Mr. Busch has been active for some time as a director of the School of Business Administration Sponsors, Inc. and we value this relationship very much." August A. Busch III is president of Anheuser-Busch.

Greek Scholar To Discuss Intellectual Revolution

Bernard Knox, director of the Center for Hellenic Studies in Washington, D. C., will speak on "The Intellectual Revolution of the Fifth Century" Wednesday, March 12.

The former professor of classics at Yale University will lecture in the Campus Center Little Theatre at 8 p.m. as part of the Visiting Scholars series. There is no admission charge.

Mr. Knox wrote the script for and performed in four half-hour films for educational television concerning Sophocles' *Oedipus the King*. The films were originally prepared for a television course in humanities in Boston secondary schools but are now distributed by Encyclopedia Britannica Films to classrooms across the country.



Bernard Knox

A recipient of the National Institute of Arts and Letters award for literature, Mr. Knox is the author of *Oedipus at Thebes*, *The Ajax of Sophocles*, *Oedipus the King*, and *The Heroic Temper*.

Maze Named New President Of R. Bland

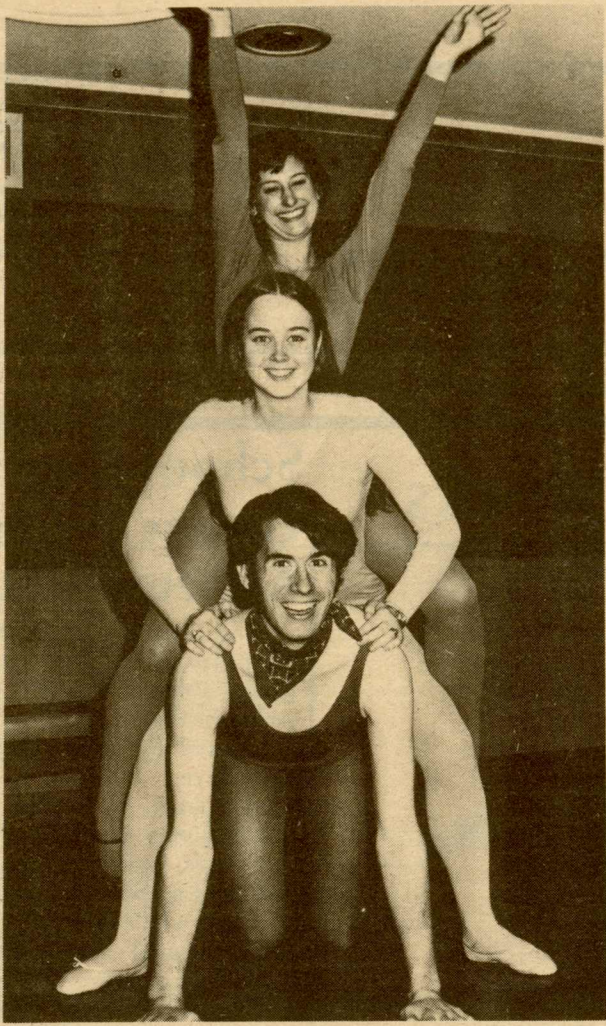
Clarence Maze, Jr., now dean of academic affairs at Glenville State College in West Virginia, has been chosen by the Board of Visitors as President of Richard Bland College, effective August 1.

Maze, 43, is a native of Industry, W. VA., and an alumnus of Glenville State. He received his master's degree in 1956 from West Virginia University and his Ed. D. degree in 1962 from Indiana University.

He returned to Glenville as dean in 1972 after seven years as professor of business education and office administration at the University of Tennessee in Knoxville. From 1962-65 he was on the staff of Ohio University as chairman of its commercial education program and later as assistant director of its center for international programs.



President Clarence Maze



Linda Voorhis, Laurie Smith and David Barton

Children's Theatre Troupe Opens Season With 'Shoemaker and Elves' on Saturday

Mime, music and poetry are just a few of the ingredients in a new series of children's theatre productions staged by The Lollipop Players, a troupe of performing students at the College.

Directed by Pamela Bailey Kator, an experienced actress, author and director of children's theatre in Texas and Florida, the troupe will open their four-performance season on Saturday, March 15, with a rollicking version of "The Shoemaker and his Elves." The performance will be held in the Phi Beta Kappa Hall Lab Theatre at 10 a.m. and is recommended for children between the ages of three and 10.

Players improvise

According to Ms. Kator, The Lollipop Players emphasize "intensive interaction" between actors and audience. By using improvisation, song, dance and poetry, the players attempt to involve the children in conversations with stage characters. During some portions of the show, the children are asked to volunteer ideas and situations that challenge the actor's creativity, and they are encouraged to participate in various on-stage situations.

"We start out the show by walking around in the audience conversing with the kids,"

explained Ms. Kator. "Then the actors will spring into what we call a mind machine -- we'll act out their favorite nursery rhymes, toys, colors, almost anything the children want us to stick in."

"The most important thing for this kind of theatre to really work is the constant dialogue between the actors and the children," she continued. "It's something they can't get from television or film -- it's pure theatre, pure communication."

Experienced director

Ms. Kator recently moved to Williamsburg from Paris, when her husband accepted an assistant professorship with William and Mary at the Virginia School of Marine Science. She has directed and performed children's theatre for National Young Audiences Inc., The Pied Piper Players of Florida and the Foubie and Poupie players. She has also served as educational director for a two-branch day-care center and has performed in shows with a list of

luminaries that includes Gian Carlo Menotti, Dana Andrews and Lotte Lenya.

Student troupe

Ms. Kator, who is completing work on an undergraduate arts and science degree from the College, will be joined on stage by two freshmen, three sophomores and two juniors with impressive theatre backgrounds. The troupe members are David Barton, Springfield; Stephanie Harpur, Harrisonburg; John Livengood, Cumberland, Md.; Bob Powers, Boston Mass.; Laurie Smith, Fairfax; Lois Thomas, West Chester, Pa.; and Linda Vorhis, Annandale.

The troupe will also make all its own costumes and design the sets and lighting for all performances.

The Lollipop Players have scheduled different performances for April 12, April 26 and May 10. Tickets for each performance are one dollar per child, and adults accompanied by a child will be admitted free.

Special Education Division Receives \$40,000 BEH Grant

The Division of Special Education at the School of Education has received a grant of \$40,000 from the U.S. Office of Education, Bureau of Education of the Handicapped (BEH).

The grant is the second in as many years and will be used for scholarship grants to full-time students in graduate programs, staff and curriculum materials.

According to Louis P. Messier, associate professor of education and coordinator of the Division of Special Education, the two grants received so far from BEH, amounting to \$80,000, comprise part of a \$120,000 grant which is being step-funded over four years.

Approximately 12 full time students at the graduate level will receive aid under the grant for preparation as teachers of the mentally retarded, learning disabled or emotionally disturbed children. Application information is available from the Division of Special Education in the office of Robert C. Jones, associate dean, School of Education.

Students who enter under the grant in September will take a full year of field work as well as 36 to 39 hours of course work. Completion of the program will lead to certification in one of the three areas of special education as well as a master's degree in education.

There are 27 full time students now enrolled in graduate study in special education. Twelve are expected to complete their work in June and the remainder in August.

The Division of Special Education is involved primarily with public schools but also works very actively with institutions and regional centers dealing with the severely educationally handicapped.

Office of Development

NATIONAL SCIENCE FOUNDATION

Workshops to Explore Opportunities for Basic Research in Energy Field--NSF has announced a series of workshops designed to delineate opportunities for basic research in solving energy problems. The workshops will bring together experts from colleges, universities, industry and government to identify key problems. The sessions, listed below, are open to the public on a space available basis.

April 4-5, Interdependence of Energy Growth: Kenneth Arrow, Allan Manne, and Dale Jorgenson; Department of Economics, Harvard University, Cambridge, MA 02138.

April 17-18, Political Economy of Exhaustible Resources: Mancur Olson and Anthony Fisher, Department of Economics; Davis Bobrow, Department of Political Science; University of Maryland, College Park, MD 20742.

July 7-11, Research Application Conference on Energy: Fred Roberts, Society for Industrial and Applied Mathematics, New Canaan, CT 06840.

Research Activities in Geothermal Energy--NSF intends to allocate approximately \$1,000,000 of FY75 funds to support applied research on the environmental effects related to the development of energy from geothermal resources. Unsolicited proposals are encouraged. Specific areas include: 1) water quality; 2) air quality; 3) biological impact; 4) physical effects; 5) socioeconomic impact; 6) problems related to environmental impact reporting. NOTE: NSF's pamphlet "Guidelines for Preparation of Unsolicited Proposals to Research Applied to National Needs" contains guidelines regarding preparation of proposals.

For further information and above pamphlet contact: Office of Programs and Resources, National Science Foundation, 1800 G. Street, N.W., Room 630, Washington, D.C. 20550. Proposals should be submitted as early as possible. Proposals received after March, 1975, may be considered for FY76 funding.

NATIONAL ENDOWMENT FOR THE HUMANITIES

Youthgrants in the Humanities--Deadline Reminder: April 1.

Series of Workshops To Examine Reading

The future of reading in the 80's and how to help the poor reader in the classroom, will be two of the topics under discussion at three workshops which the Reading Center of the School of Education will offer for Tidewater educators March 15, April 12 and May 3.

Mr. William D. Sheldon, director of the Reading and Language Arts Center at Syracuse University since 1948, will direct the first workshop March 15, on "The Future of Reading - Where Do We Go in the 1980's?"

Mr. Sheldon is past president of the International Reading Association and author of over 100 articles, books and chapters dealing with reading instruction and research.

"The Language-Experience Approach - A New Perspective," will be the topic for the second workshop April 12, which will be directed by Mr. Russell G. Stauffer, H. Rodney Sharp Professor of Education at the University of Delaware and founder and director of the University of Delaware Reading-Study Center.

Mr. Albert J. Harris, whose book "How to Increase Reading Ability" is now in its sixth edition, will lead the discussion of ways of helping the poor reader in the classroom at the third workshop, May 3.

The workshop series, the first of its kind in this area, is being offered by the School of Education through the Office of Special Programs. While primarily geared to the classroom teacher, the programs are open to interested parents and other members of the community who would like to attend any or all.

Coordinator for the workshop series is Donald R. Lashinger, associate professor of education.

Further information concerning the workshops may be obtained from the Office of Special Programs at the College of William and Mary, 12070 Jefferson Avenue, Newport News, phone 877-9231 or the Reading Center, 229-3000 (ext. 334).

W&M NEWS

Volume III, No. 24

March 11, 1975

Published weekly through the Office of Information Services by the College of William and Mary for faculty, staff and students. Produced by the College News Office, 125 Richmond Road. Inquiries should be directed to Marjorie N. Healy, Information Officer. Mailed to addresses of employees as on record at the Personnel Office, James Blair Hall, to which office address changes should be directed.

Va. Landmarks Commission Moves Into Wren Quarters

The Virginia Historic Landmarks Commission has set up temporary quarters in the north end of the Wren Building basement in the area of the Wren Kitchen.

The move is temporary because the General Assembly has authorized the Commission to develop a research center here for archaeology in the state. In the recent session, House Bill 1753, chief patron, Thomas Michie; co-patron, George Grayson, was passed unanimously by both the House and the Senate. The bill broadens the scope of the new center's work to include both historical and prehistorical archaeology. Formerly the center was to have dealt only with historical archaeology.

According to William M. Kelso, historical archaeologist for the Virginia Landmarks Commission who heads the staff at the temporary quarters on campus, Governor Godwin is expected soon to appoint a nine-member advisory board for the new center.

The proposed new center will follow the pattern of similar centers in North and South Carolina and Arkansas, which have been located on university campuses. The center at the University of Arkansas is considered one of the finest in the country.

Part of the area being used by the new Wren basement tenants is being readied for a small exhibition area with exhibits relating primarily to 17th century architectural sites. Kelso said he hopes the museum will be ready for the May meeting of the Landmarks Commission, which will be held in Williamsburg. When it is completed, the exhibit in the Wren building will be open to the public and anyone interested in the work of the Commission is invited to stop in.

Seminar Series Begins March 15

A series of seminars on current world affairs has been inaugurated by several campus organizations in honor of President and Mrs. Graves.

Sponsored by the International Circle, the Student Association and the Anthropology Club, under the direction of Visiting Professor of Anthropology Mario D. Zamora, the six seminars are open to the public at no charge.

"Greece: Yesterday, Today and Tomorrow" will be presented by Mr. John Makulowich of United Press International on Saturday, March 15, at 7 p.m. Phillips Francisco Gonzalez Gonzalez of the International Circle is

Conference Focus Is Psychological Education

More than 400 counselors from across the state will participate in the annual meeting of the Virginia Personnel and Guidance Association (VPGA) at the Hilton 1776, March 13-15.

Mr. Alfred Alschuler, professor of education at the University of Massachusetts at Amherst, will be the keynote speaker at the three-day VPGA convention. He will speak on "The Political and Psychological Aspects of Counseling" at 10 a.m. Friday in the Middle Plantation Room.

Associate Professor of

Education Fred Adair, program director for the conference, says that "psychological education is fast becoming a major movement in the field of counseling and its impact should be felt in the public schools in the near future."

Trosvig Scholarship Established Here To Honor Sisters

A new scholarship fund has been established for students at William and Mary who have been graduated from Walsingham Academy or Lafayette High School.

Known as the Trosvig Scholarship, the fund was made possible by a recent bequest of approximately \$45,000 to the College endowment by Alma and Clara Trosvig, longtime area residents, in honor of their sisters, Ida and Milla Trosvig.

Recipients will be selected by the committee on student aid and placement, on the advice of the director of student aid. Preference will be given to students in financial need.

Ida and Milla Trosvig, both alumnae of the college, were teachers. The scholarships will be limited to students in the fields of mathematics and social science, reflecting the sisters' educational interests.

Convention chairperson Kevin Geoffroy, also an associate professor of education at the College, reports that more than a dozen programs will complement the keynote presentation, including discussions on psychological education in community colleges, counseling minority students, and sex equality in guidance opportunities.

Other guest lecturers for the conference include Jack Duncan, president of the VPGA, and Charles Lewis, executive director of the American Personnel and Guidance Association.

Law Alumnus Challenges Donors To Up Fund Total

Newport News lawyer Louis Ellenson has challenged alumni, faculty, students and friends of the Marshall-Wythe School of Law to surpass last year's annual fund total by \$15,000.

Ellenson, an alumnus of Marshall-Wythe, and his wife Goldye have offered to match dollar-for-dollar, up to a total of \$15,000, all gifts and pledges over last year's campaign total of \$57,037.

The Ellenson gift will be dedicated to an endowment providing continuing support of the law library.

Campus Exhibits

Pastels by James Peters '75, Andrews Gallery, Monday-Friday, 8:30 a.m.-4:30 p.m., March 17-April 3.

The Colonial Naturalist: Facsimiles of Mark Catesby Prints, Botetourt Museum, Swem Library, Monday-Friday, 8 a.m.-5 p.m.; Saturday, 9 a.m.-1 p.m.; March 12-April 25.

Board of Visitors Actions, March 7-8

Dr. Clarence Maze Is Selected As President of Bland

The Richard Bland College Presidential Search Committee was formed by the Board of Visitors on September 28, 1974, and charged with the responsibility of recommending to the Board as many as three nominations for appointment of a permanent President at Richard Bland. The decision was motivated by the recent strengthening and stabilization of the College as a State-supported two-year institution, administered as a branch of the College of William and Mary. The Committee included representation from the faculty, student body, alumni organization, and the Board of Visitors and was chaired by Miss Anne Dobie Peebles of the Board.

The search was nationwide and conducted with careful regard for affirmative action policies and procedures. There were 195 nominations and applications for the Presidency, from 38 states and five other countries. The Search Committee worked closely with all interested members of the Richard Bland community as well as in the Tri-City area served by the College. Miss Peebles extended great personal effort in presenting Richard Bland College to acquire the most qualified candidates.

The Board has reviewed the report of the Search Committee and unanimously selected Dr. Clarence Maze, Jr. as President, effective August 1. Dr. Maze, now dean of academic affairs at Glenville State College in West Virginia, has an outstanding teaching and administrative background at Glenville, the University of Tennessee and Ohio University. His appointment promises an important opportunity to build on Richard Bland College's strengths and brings to the Commonwealth and Tri-City area a strong educational leader.

Board Statement Recognizes Service Of Laban As Acting President

Cornelis Laban assumed the office of Acting President of Richard Bland College in September 1973, at a time of great uncertainty regarding the future of the College. He had not sought the position, but was elected to it by the Board of Visitors, upon the recommendation of President Graves, after the Presidential Search Committee proved unable, in light of Richard Bland's apparently unclear future, to identify an acceptable and willing candidate for the presidency. Accepting the Board's request, Dr. Laban dutifully gave up the teaching of biology

for the duration of the College's need for his administrative services and addressed himself vigorously and ably to the large and exceptionally difficult responsibilities of an acting president.

In his years of office, Dr. Laban has worked effectively with the faculty and administration to instill in the College a strong sense of order, stability, and continuity. While properly assuming that the major decisions regarding the basic objectives, goals, and educational policy of the College should be reserved for the leadership of the succeeding President, in his acting capacity Dr. Laban has provided encouragement and leadership to enable Richard Bland to do a better job in its current activities and program. In a difficult inflationary period, he has worked assiduously and successfully to hold escalating costs to a minimum consistent with educational need. He has made difficult decisions, inevitably not all popular, but each one of them informed with characteristic personal integrity and courage. Richard Bland College is today in an evidently stronger and better position than it has ever been. Every positively contributing member of that academic community can and should share the credit for this, but a disproportionate share of the credit and praise must be assigned to Dr. Laban, who could easily and comfortably have allowed himself to conceive of his responsibilities simply as those of an administrative caretaker, but who never did.

As he returns to his teaching and research in biology, it is proper and right that the Board of Visitors express its sincere thanks to Dr. Laban, for a job very well done in trying circumstances. It is appropriate also that this gratitude take a form consistent with the values of the academic profession to which Dr. Laban now returns, and in which he has served at Richard Bland since 1969, after considerable prior research and teaching elsewhere. It is especially important that he not in any way be penalized, in the progress of his academic career, by his dutiful willingness to interrupt that career to accept administrative responsibilities which were unsought but willingly accepted.

His is an unusual circumstance, in which an unusual resolution should not be considered irregular. While recognizing, therefore, that the regular review procedures for consideration for promotion and the award of tenure have not been followed in this exceptional case, be it nonetheless.

RESOLVED, that the Board of Visitors expresses its profound appreciation and gratitude for the devoted and able service given to Richard Bland College by Dr. Cornelis Laban as its Acting President since September 1973; and

RESOLVED FURTHER, that the Board of Visitors hereby promotes Dr. Laban to the academic rank of Professor of Biology at Richard Bland College, and confirms him in that rank in a status of permanent tenure, as that status is understood within the statutory rule of the Commonwealth of Virginia, which prohibits the granting of a contract of unlimited duration; the promotion to be effective September 1975, the assumption of tenured status to be effective September 1975.

Board Actions Continued on Pages 4-5

4 Revised Capital Outlay Projects For 1976-82

Capital outlay requests for the 1976-78 biennium and projections for the succeeding two biennia must be filed with the Governor's Office by March 15, 1975.

The Board of Visitors, at its meeting on January 16-17, 1975, approved the projects, listed by priority and estimated costs, which were recommended by the President and his administrative officers. Final revisions of the cost estimates for these projects for 1976-78 have now been completed and are listed in the attached schedule. No revisions are recommended for 1978-80 or 1980-82 at this time.

RESOLVED, That the Board of Visitors hereby approves the final recommendations of the President for institutional capital outlays for 1976-78, as revised in the attached schedule.

Proposed Capital Outlay Projects For the Period 1976-78

Priority	Project	Total Est. Cost	From Gen. Fund	Other
1.	New Law School Building and Equipment, adjacent to National Center for State Courts	\$5,324,150	\$5,105,900*	-
1A.	Utilities and Site Work for New Law School Building	486,150	486,150	-
2.	Renovation of Rogers Hall for School of Business Administration and Equipment	1,717,825	1,668,325*	-
2A.	Utilities and Site Work for Renovation of Rogers Hall	36,000	36,000	-
3.	Renovation of Physical Plant Services Complex and Equipment	723,750	691,000*	-
3A.	Utilities and Site Work for Renovation of Physical Plant Services Complex	275,000	275,000	-
4.	Installation of Storm Drainage System: Final Phase	261,000	261,000	-
5.	Replacement of Aged Steam and Condensate Return Lines - Colonial Campus: Phase I	103,000	103,000	-
6.	Installation of Twelve Tennis Courts	310,000	310,000	-
TOTALS FOR 1976-78		\$9,236,875	\$8,936,375	-

*The difference between the total estimated costs and the amounts presently requested from the General Fund are accounted for as follows:

- Item #1 - \$218,250 was provided by the 1974 General Assembly for the plans covering this project
- Item #2 - \$ 24,750 was provided by the 1973 General Assembly for preliminary plans
24,750 was provided by the 1974 General Assembly toward the completion of working drawings
\$ 49,500 Total already provided for Item #2
- Item #3 - \$ 32,750 was provided by the 1974 General Assembly for the plans covering this project

NOTE: The cost figures listed are tentative estimates, and they are subject to further refinement before the final submission to the State on March 15, 1975.

Proposed Capital Outlay Projects For the Period 1978-80

Priority	Project	Total Est. Cost	From Gen. Fund	Other
1.	Renovation of Marshall-Wythe Hall and Equipment	\$ 42,500	\$ 42,500	-
2.	Renovation of James Blair Hall and Equipment	816,000	816,000	-
2A.	Utilities and Site Work for Renovation of James Blair Hall	35,000	35,000	-
3.	Renovation of Ewell Hall and Equipment	380,000	380,000	-
3A.	Utilities and Site Work for Renovation of Ewell Hall	20,000	20,000	-
4.	Replacement of Aged Steam and Condensate Return Lines - Colonial Campus: Phase II	78,000	78,000	-
5.	Addition and Equipment for Adair Gymnasium	364,000	364,000	-
5A.	Utilities and Site Work for Addition to Adair Gymnasium	30,000	30,000	-
6.	Demolition of Tyler Hall	20,000	-	\$20,000
7.	Installation of Twelve Tennis Courts	350,000	350,000	-
8.	Improvement of Jamestown Road Parking Area: Area II	212,000	212,000	-
TOTALS FOR 1978-80		\$2,347,500	\$2,327,500	\$20,000

*This "Other" funding is to be provided from funds of Auxiliary Enterprises.

NOTE: The cost figures listed are tentative estimates, and they are subject to further refinement before the final submission to the State on March 15, 1975.

Proposed Capital Outlay Projects For the Period 1980-82

Priority	Project	Total Est. Cost	From Gen. Fund	Other
1.	Renovation of Jones Hall for School of Education and Equipment	\$ 52,000	\$ 52,000	-
2.	Renovation of Washington Hall and Equipment	1,877,000	1,877,000	-
2A.	Utilities and Site Work for Renovation of Washington Hall	46,000	46,000	-
3.	Addition to Swem Library and Equipment	1,979,000	1,979,000	-
TOTALS FOR 1980-82		\$3,954,000	\$3,954,000	-

NOTE: The cost figures listed are tentative estimates, and they are subject to further refinement before the final submission to the State on March 15, 1975.

Tuition and General Fee, And Other Fees 1975-76

Requirements for the educational program and supporting services have been carefully evaluated by the President and his administrative officers for the year 1975-76. In accordance with the plan for the biennium, no increase in the tuition and general fee for tuition itself is recommended. However, unprecedented inflationary pressures on operating costs in certain areas oblige the President to recommend selective increases in allocations to enable the College to maintain the calibre and scope of present programs.

RESOLVED, That the Board of Visitors hereby approves the attached Schedule of Tuition and General Fee, and Other Fees for 1975-76, its allocations and the revisions in charges detailed below for the session 1975-76.

Increase in tuition and general fee for in-state, full-time students by \$15 per semester, increasing therefore this fee from \$457 to \$472 per semester, a total of \$944 for both semesters of the regular session.

Increase in tuition and general fee for out-of-state, full-time students by \$15 per semester, increasing therefore this fee from \$1,106 to \$1,121 per semester, a total of \$2,242 for both semesters of the regular session.

Increase in board rate by \$45 per semester, increasing therefore the board rate from \$303 to \$348 per semester, a total of \$696 for both semesters of the regular session.

Increase in room rent from a present range per semester of \$260 to \$340 to a range of \$286 to \$374 per semester, a total of \$572 to \$748 for both semesters of the regular session.

Reduction in the Applied Music fee from \$108 to \$100 per semester for one half-hour lesson per week. Of this fee, 10% will be withheld to cover overhead costs, with 90% being paid to the instructor. The 10% overhead proceeds will be allocated to the Department of Music for the purchase of equipment, which is critically needed to meet student enrollment increases.

NOTE: The Board of Visitors, at its meeting November 21-22, 1974, increased the Tuition and General Fee by \$11 per semester, increasing the total allocation to Athletic and Recreational Activities from \$44 to \$55 per semester, or from \$88 to \$110 per both semesters of the regular session.

Continued on Page 5

Tuition and General Fee, and other Fees — Actual for 1974-75 and Proposed for 1975-76

	ACTUAL 1974-75		PROPOSED 1975-76		INCR/(DECR) OVER 1974-75	
	Virginia	Out-of-State	Virginia	Out-of-State	Virginia	Out-of-State
	\$					
TUITION AND GENERAL FEE (TOTAL):	\$ 914	2,212	944	2,242	30	30
This total Tuition and General Fee is allocated as follows:						
Tuition	634	1,932	634	1,932	-0-	-0-
** Student Activities	18	18	18	18	-0-	-0-
Athletic and Recreational Activities	88	88	110	110	22	22
Student Health Service	60	60	72	72	12	12
General Auxiliary Enterprise Services	47	47	47	47	-0-	-0-
Debt Service	67	67	63	63	(4)	(4)
OTHER FEES (TOTAL):	<u>1,176</u>	<u>1,176</u>	<u>1,356</u>	<u>1,356</u>	<u>180</u>	<u>180</u>
Board	606	606	696	696	90	90
Room (Average)	570 *	570 *	660 *	660 *	90	90
TOTAL FEES: TUITION AND GENERAL, AND OTHER:	<u>\$2,090</u>	<u>\$3,388</u>	<u>\$2,300</u>	<u>\$3,598</u>	<u>\$ 210</u>	<u>\$ 210</u>

* At the time this schedule was submitted to the Board in 1974, the average was estimated at \$570. After the rent equalization was accomplished, the actual average for 1974-75 became \$600. Thus, the 10% increase results in an average of \$660.

** Does not include Law School Activities Allocation of \$8.00 which is applicable to students of the Marshall-Wythe School of Law for the funding of the non-social services coordinated through the Student Bar Association.

Approval of 1975-76 Athletic Budgets

Budgets for the fiscal year beginning July 1, 1975, through June 30, 1976 have been prepared for the Men's Athletic Association, the Women's Athletic Association and for the Men's and Women's Intramural and Recreational Sports Programs. The budgets are predicated on the allocation of a portion of the Tuition and General Fee, in accordance with the guidelines for the Implementation of the Statement of Athletic Policy which was approved by the Board of Visitors at its meeting on November 22, 1974.

Summaries of revenues and the proposed expenditures have been prepared by the athletic departments and have been carefully reviewed by the President and his administrative officers.

RESOLVED, That the Board of Visitors hereby approves the attached 1975-76 Budgets for the Athletic and Recreational Activities, The Men's Athletic Association, The Women's Athletic Association, and for the Men's and Women's Intramural and Recreational Sports.

Athletic and Recreational Activities 1975-76 Budget

Revenue:	Budget 1974-75	Budget 1975-76
Allocation of \$110 for 4,900 students	\$ 539,000	
Operating Budget:		
Men's Athletic Association	\$ 355,604	\$ 392,000
Women's Athletic Association	48,185	98,000
Men's Intramural and Recreational Sports	2,400	14,700
Women's Intramural and Recreational Sports	-0-	14,700
Student Recreation:		
Dances and Special Events	3,675	3,675
Concerts	3,150	3,150
Lectures	1,575	1,575
Band Fund	3,675	3,675
Overhead charged by the Commonwealth of Virginia	8,536	7,525
Totals	<u>\$ 426,800</u>	<u>\$ 539,000</u>

Breakdown of Allocation per Student

The following breakdown is in accordance with the distribution indicated in the guidelines for the Implementation of the Statement of Athletic Policy approved by the Board of Visitors on November 22, 1974:

Intercollegiate Football)	\$ 36
Intercollegiate Basketball)	
Men's Non-Revenue Sports	20
Supporting Activities for Men's Athletics	24
Men's Intramural and Recreational Sports	3
Women's Intramural and Recreational Sports	3
Women's Non-Revenue Sports	20
Student Recreation	2
State Overhead	2
Total allocation per student	<u>\$ 110</u>

Men's Athletic Association 1975-76 Budget

	Actual 1972-73	Actual 1973-74	Budget 1974-75 (as revised)	Budget Request 1975-76
REVENUES				
*As allocated	\$ 357,315	\$ 336,198	\$ 355,604	\$ 392,000
Football	146,085	237,025	220,000	205,000
Basketball	31,962	34,989	40,000	60,000
Educational Foundation	75,000	90,000	110,000	240,000
Donation (for Gymnastics)	6,678	10,100	10,000	10,000
General Current Funds Local	30,000	58,772	30,000	-0-
Chancellor's Fund	10,000	-0-	-0-	-0-
Miscellaneous - Program Sales, Vending, Concessions, Television, Radio, etc.	<u>53,654</u>	<u>12,844</u>	<u>76,000</u>	<u>31,211</u>
Total Revenues	<u>\$ 710,694</u>	<u>\$ 779,928</u>	<u>\$ 841,604</u>	<u>\$ 938,211</u>
EXPENDITURES				
Salaries	\$ 215,610	\$ 238,757	\$ 257,180	\$ 274,031
Grants-in-Aid	244,881	274,674	305,100	383,350
General Expense	<u>250,203</u>	<u>266,497</u>	<u>279,324</u>	<u>280,830</u>
Total Expenditures	<u>\$ 710,694</u>	<u>\$ 779,928</u>	<u>\$ 841,604</u>	<u>\$ 938,211</u>
*4,900 students @ \$36 each, for intercollegiate football and basketball			- \$ 176,400	
4,900 students @ \$20 each, for men's non-revenue sports			- 98,000	
4,900 students @ \$24 each, for supporting activities			- <u>117,600</u>	
Total allocation for 1975-76			<u>\$ 392,000</u>	

Women's Athletic Association 1975-76 Budget

	Actual 1972-73	Actual 1973-74	Budget 1974-75	Budget Request 1975-76
REVENUES				
*As allocated	\$ 19,949	\$ 33,045	\$ 48,185	\$ 98,000
General Current Funds				
Local	-0-	-0-	500	-0-
Miscellaneous	-0-	-0-	3,185	-0-
Total Revenues	<u>\$ 19,949</u>	<u>\$ 33,045</u>	<u>\$ 51,870</u>	<u>\$ 98,000</u>
EXPENDITURES				
Salaries	\$ 3,667	\$ 14,468	\$ 26,300	\$ 53,500
General Expense	<u>16,282</u>	<u>18,577</u>	<u>25,570</u>	<u>44,500</u>
Total Expenditures	<u>\$ 19,949</u>	<u>\$ 33,045</u>	<u>\$ 51,870</u>	<u>\$ 98,000</u>

*4,900 students @ \$20 each, for 1975-76.

Campus Wrap-Up

Grayson Sets Legislative Report

Delegate George W. Grayson, associate professor of government, will present a "legislative report" on the recently concluded 1975 session of the Virginia General Assembly. This report, which will last approximately one hour, will be given at 7:30 p.m. on Tuesday, March 11, in Room 20 of Morton Hall. Students and other members of the College community are invited to attend.

Campus G.O.P. Launches Effort

Local College Republicans will launch a grass roots effort to strengthen Republican sentiment in the area at 8 p.m. Wednesday, March 12. The meeting will be held in duPont residence hall.

Campus Republicans will be sponsoring community education programs, a media program to acquaint people with the spending habits of their elected officials and a series of speakers. Karl Rove, National Chairman of the College Republicans will kick off the effort with a discussion on the impact of youth on political parties.

The effort is intended to increase the input of G.O.P. youth in the Republican Party and in the community.

Thailand Lecture Announced

"Thailand--the next Vietnam?" is the topic of an address to be given by Donald Baxter, associate professor of government, at Asia House on Thursday, March 13, at 7:30 p.m. Mr. Baxter has been teaching at the College since 1967. His special interest is comparative government, and he is particularly interested in those of South and Southeast Asia. He has lived and taught in Thailand, the Philippines and India. The lecture is open to the public.

Sociology Course Pre-Registration

There will be a pre-registration briefing session on Monday, March 17, for all students interested in enrolling in the Sociology 330-331 course "Sociology of Mental Illness: The Community and Social Psychiatry."

The session will be held at 7:30 p.m. in the library/conference room of Morton Hall, Morton 237. Those who are interested in the two semester, six credit course, but who cannot attend the briefing, are urged to contact Professor R. Wayne Kernodle (Ext. 332 or 326) or Mr. Richard D. Morrison, graduate assistant (Ext. 327 or 229-7060).

Orchestra Seeks Members

The College-Community Orchestra is seeking new members, according to director Alan C. Stewart. Additional string players are always needed, he said. Other specific needs include french horn, trombone, clarinet, tympani and percussion players.

Interested musicians should contact Mr. Stewart at 229-1492.

The orchestra rehearses at the College each Wednesday, 7:30-9:30 p.m.

Merit Exam Forms Available

Applications for taking the Virginia Merit Exam are available in the Office of Placement, 104 Morton Hall, until March 27. The application is to be completed and returned to the Office of Placement by March 27. The exam will be administered by the Virginia Employment Commission in Room D of the Campus Center on the following dates:

Thursday, April 3 at 2 p.m.
Friday, April 4 at 9 a.m.
Thursday, April 10 at 9 a.m.
Friday, April 11 at 2 p.m.

Only those persons returning the completed application to the Office of Placement by March 27 will be admitted to the exam. Each exam will be limited to 25 participants.

Since this is probably the only time this year that the exam will be open to college graduates, the Placement Office urges those interested to register.

Among those agencies requiring successful scoring on the exam prior to consideration for employment are:

Division of Welfare, including local departments
Division of Drug Abuse Control
Virginia Commission for Visually Handicapped
Virginia Employment Commission
Department of Mental Health and Mental Retardation

Swem Changes Overdue Book Notice System

Early next month Swem Library will change its procedure for notifying students about overdue books.

Sending out first overdue notices to students has become too costly, time consuming for library staff, and unreliable. Circulation Librarian Robert Burr estimates that such notices now "have only a 50% chance of reaching their destination." He cites incorrect, incomplete or illegible information furnished by the borrower on the charge card as a major source of error. Notices also frequently arrive only after long delays.

To correct this situation and to cut communication costs, the library will now post the names of student borrowers with overdue books in the library and Campus Center. Mr. Burr emphasized that this places greater responsibility on student borrowers to check the list regularly and to then contact the

circulation desk for detailed information.

A written notice will be sent to the student borrower if an overdue book has not been received at the library approximately four weeks after it was due. The student must take action within two weeks of this notice in order to clear overdue records and avoid library delinquent status.

PERSONNEL BULLETIN

The following positions at the College are or will be vacant. Qualified employees who wish to be transferred to these positions may receive additional information at the Personnel Office. The College is an Equal Opportunity Employer. Accordingly, women and minority employees are encouraged to apply for those positions for which they feel they are qualified.

Inquiries about vacancies should be directed to the Personnel Office and not to the department where the opening exists.

Call 229-JOBS (5627) for an updated listing of job vacancies on campus and 24-hour service.

CLERK STENOGRAPHER C: College Housing Office; 2.83 per hour.

CLERK TYPIST B: English Department; \$4,920-6,432.

CLERK C: Printing Office; \$5,640-7,344.

CLERK STENOGRAPHER B: Office of the Dean of the Faculty of Arts and Sciences; \$5,400-6,720.

CLERK STENOGRAPHER C: Residence Hall Life; \$5,880-7,680.

HOUSEKEEPING SUPERVISOR C: Completion of elementary education plus 5 years experience in housekeeping work, one year of which must have been in a supervisory capacity; Plant and Maintenance Department; \$7,032-8,784.

BUILDING AND GROUNDS SUPERVISOR B: Completion of high school plus 3 years experience at supervisory level in a building trade; college or technical school may be substituted for experience; Plant and Maintenance Department; \$10,512-12,528.

SCIENTIFIC MACHINIST: Minimum of 5 years experience in operation of all types of machine shop equipment used in research lab; must be able to work to close tolerance, work from sketches; very essential to interpret and carry through job from oral directions; welding and heliarc helpful; WSPL Machine and Instrument Shop; \$4.25-5.50 per hour.

SERVICE RATINGS

FOR PERMANENT CLASSIFIED EMPLOYEES

Continued employment in the service of the Commonwealth is assured by the Virginia Personnel Act on the basis of merit and fitness. It is incumbent upon each appointing authority to take those actions within his purview which will assure appointment on the basis of merit and fitness, and to remove from the service of the Commonwealth those persons who do not meet this measure. Accordingly, employees at the College shall be rated annually in accordance with the following procedure:

- During the latter part of each year supervisors are requested to evaluate the job performance of classified employees based on the following characteristics: Habits of Work, Quality of Work, Amount of Work, Cooperation, Intelligence, and Initiative.

- The rating scale is Excellent, Very Good, Good, Fair, or Poor. The supervisor must review the service rating with the employee so that the employee may know how his performance has been judged. Each employee is required to sign the rating to indicate that he/she has seen and discussed the rating with the supervisor.

- It should be noted that the following ratings constitute an unsatisfactory evaluation, and will cause the employee's merit increase to be denied:

- Any appraisal of "Poor" and/or
- More than two appraisals of "Fair."

- The primary intent of the annual rating is to aid in the development of the employee and in the evaluation of his work when considered for a promotion, or a salary increase. Ratings of Fair and Poor indicate marginal and unsatisfactory performance and may be grounds for termination.

- Employees may review at any time (by appointment) their service rating in the Personnel Office.

EQUAL EMPLOYMENT OPPORTUNITY POLICY

The Commonwealth of Virginia shall provide equal employment opportunity to its employees and applicants for employment on the basis of fitness and merit without regard to race, color, religion, national origin, political affiliation, sex or age (except where sex or age is a *bona fide* occupational qualification). This policy shall be followed in recruiting, hiring, promotion into all position classifications, compensation, benefits, transfers, layoffs, returns from layoff, demotions, terminations, State sponsored training programs, educational leave, social and recreational programs and use of State facilities. Any person employed by the Commonwealth of Virginia who fails to comply with this policy is subject to disciplinary action.

Financial Assistance Information Given

Undergraduates who seek to renew their student financial assistance or who wish to file an initial application should secure from the Student Aid Office the Institutional Application and the Parents' Confidential Statement or the Student's Financial Statement during March or April. The deadline for applying for 1975-76 is May 1.

Graduate students who wish to apply for a National Direct Student Loan should secure the NDSL Application and the Student's Financial Statement from the Student Aid Office during April or May. The deadline for applying for 1975-76 is July 1.

Students Establish Exchange Service

Student volunteers recently established an exchange service on campus for wanted and for sale items. Called the "Tribe Trader," the project is supported by the Student Association and is located in SA headquarters in the Campus Center basement.

The volunteers keep a file of wanted and for sale items and will also regularly post lists of the items in such central locations as the library, Campus Center and Commons. They will not keep information about rooms for rent, since the Campus Housing Office handles that, and also will not keep information about rides, since that can be posted on the ride board in the Campus Center lobby.

Items may be phoned in by calling Ext. 394. Hours for the Tribe Trader are: Mondays and Wednesdays, 3-5 p.m.; Tuesdays and Thursdays, 11 a.m.-1 p.m.; Fridays, 12 noon-2 p.m.

The service will include items from both the campus and Williamsburg communities.

Faculty/Staff News

HISTORY

Professor Richard Maxwell Brown's article, "Pivot of American Vigilantism: The San Francisco Vigilance Committee of 1856," has just been reprinted in Stephen Salisbury, ed., *Essays on the History of the American West* (Hinsdale, Ill.: Dryden Press, 1975). The article originally appeared in John A. Carroll, ed., *Reflections of Western Historians* (Tucson: University of Arizona Press, 1969).

MATHEMATICS

Three members of the department presented papers at the 81st annual meeting of the American Mathematical Society in Washington, D.C., held Jan. 21-26. The papers presented were: "Weak parallelogram laws for Banach spaces," by William L. Bynum, associate professor; "Finitely generated projective modules," by Robert W. Miller, assistant professor; and "The enumeration of Boolean graphs," by Paul K. Stockmeyer, assistant professor. Professor Stockmeyer's paper was presented at the special session on Advances in Graph Theory.

Norman Gibbs, associate professor, has had a paper entitled, "The Heart of Computer Science," published in the December 1974 issue of the *SIGCSE Bulletin*. The paper was co-authored by D. Loveland, chairman of the dept. of computer science at Duke University, and Jim Ortega, director of ICASE at the NASA-Langley Research Center.

MODERN LANGUAGES

R. Merritt Cox, associate professor, has published a review of Eva Marja Rudat's *Las ideas esteticas de Estaban de Arteaga: origenes, significado y actualidad*, in the Winter, 1975, issue of *Hispanic Review*.

PHYSICS

The following papers have been published: (*p, pd*) *Reaction on ${}^6\text{Li}$ at 590 MeV for High Recoil Momenta*, P. Kitching, W. C. Olsen, H. S. Sherif, W. Dollhopf, C. Lunke, C. F. Perdrisat, J. R. Priest, and W. K. Roberts *Phys. Rev. C 11*, 420 (1975).

Measurement of Kaonic X-Rays from Al, Si, Ni, and Cu, P. D. Barnes, R. A. Eisenstein, W. C. Lam, J. Miller, R. B. Sutton, M. Eckhause, J. R. Kane, R. E. Welsh, D. A. Jenkins, R. J. Powers, A. R. Kunselman, R. P. Redwine, and R. E. Segel, *Nucl. Phys. A 231*, 477 (1974).

Precise Determination of E2 and E4 Moments in ${}^{165}\text{HO}$ from Muonic X-Rays, R. J. Powers, F. Boehm, P. Vogel, A.

Zehnder, T. King, A. R. Kunselman, P. Roberson, P. Martin, G. H. Miller, R. E. Welsh, and D. A. Jenkins, *Phys. Rev. Lett. 34*, 492 (1975).

The following papers have been published: "Semiclassical Calculation of Regge Poles," J. B. Delos and C.E. Carlson, in *Phys. Rev. A 11*, 210 (1975).

"Conductive String: A Relativistic Quantum Model of Particles with Internal Structure," C.E. Carlson, L.N. Chang, F. Mansouri, J. F. Willemsen, in *Phys. Rev. D 10*, 4218 (1974).

"Model of Weak Interactions Based on Exact Partial Conservation of Axial Vector Current," C. E. Carlson and C. Fronsdal, in *Phys. Rev. D 10*, 4252 (1974).

Application of the On-Mass-Shell Current Algebra to the K_{13} Form Factor, A. A. Golestaneh and C. E. Carlson II *Nuovo Cimento 23*, 153 (1974).

"Muonium-formation Measurement in Low-pressure Argon Gas," B. A. Barnett, C. Y. Chang, G. B. Yodh, J. B. Carroll, M. Eckhause, C. S. Hsieh, J. R. Kane, and C. B. Spence, in *Phys. Rev. A 11*, 39 (1975).

Colloquium

On Friday, Feb. 28, T. H. Fields, from Argonne National Laboratory, spoke on "Clusters in \bar{p} -p Annihilation and in pp Pionization" at 4:30 p.m. in room S109.

PSYCHOLOGY

Jay L. Chambers, professor, and Barbara Woodall Kragie are co-authors of an article, "Motivation Concepts and Headaches Among Student Mental Health Referrals," which has been accepted for publication in the *Journal of the American College Health Association*. Ms. Kragie, a 1973 graduate of the College, received her degree with honors in inter-disciplinary studies, and is now a law student at Indiana University.

Virgil V. McKenna, professor, and Willafay A. McKenna, law student, attended a national conference of regional chairpersons of Danforth Associates in St. Louis, Feb. 13-14. The Conference was attended by chairpersons from each of the 16 regions of Danforth Associates in the United States.

Associate Professor Glenn Shean was invited to present the results of his research in a symposium on "Research on the Etiology and Mechanisms of Schizophrenia," held at Emory University, Feb. 21 and 22. The symposium was sponsored by the clinical psychology graduate program at Emory. The other participants in the symposium were Dr. Rue

Cromwell of the University of Rochester School of Medicine and Dr. Phillip Holzman of the department of psychiatry at the University of Chicago.

Assistant Professor Lynn S. Schulz gave an invited address in collaboration with Douglas Chesson, M.D., on "Death and Dying" to the first annual conference of the Virginia Student Nursing Association, Feb. 22, at the Virginia Beach Hilton.

SCHOOL OF BUSINESS ADMINISTRATION

An article entitled "Toward a Curriculum for Competence" by George D. Cole, Jr., associate professor, has been published in the *AACSB Bulletin* for January, 1975. The *Bulletin* is the official publication of the American Assembly of Collegiate Schools of Business, under which the William and Mary School of Business Administration is accredited.

SCHOOL OF EDUCATION

Ron Wheeler, assistant professor, presented a workshop on "Instructional Strategies" at the State Department of Education's Social Studies Conference for Elementary Classroom Teachers in Fredericksburg, Feb. 15.

Associate Professor Bob Maidment has been awarded a plaque from the Commission on Secondary Schools of the Southern Association of Colleges and Schools "in appreciation for distinguished service to the secondary schools of Virginia." Mr. Maidment has served on the SACS Virginia Committee for five years.

John F. Lavach, associate professor, has been invited to present a workshop on "The McCarthy Scales of Childhood Development" in Roanoke, March 18. He will serve as workshop director for "The School Social Worker" at the School Psychologist annual conference.

Professor Armand Galfo's article entitled "Measurement of Group Versus Educational Leaders' Perception of Leadership Style and Administrative Theory Orientation" has been accepted for publication in the *Journal of Educational Research*. The article reports a 1974 research in which Mr. Galfo studied the inter-relationship of leader Machiavellianism (theory orientation) and leadership style as perceived by school principals, assistant principals, etc. and the teachers with whom they work.

More than 100 elementary and secondary school educators recently attended a learning disabilities conference in Phi Beta Kappa Hall sponsored by the School of Education. Dolores B. Storey, a member of the Richard Scott Educational Consulting firm, was the featured lecturer at the two-day conference. Among the topics discussed by the group of school psychologists, reading specialists and counselors were hyperkinesis, eye-hand coordination and dyslexia.

SWEM LIBRARY

Sarah Gray, periodicals librarian, attended a planning meeting of the executive committee, College and University section, Southeastern Library Association, March 3-5 in Atlanta. Ms. Gray was recently elected secretary of the section and will serve a two-year term.

Alva W. Stewart, associate librarian, is the author of an article describing the findings and recommendations of the Commission on City-County Relationships, a legislative study group which submitted its report to Governor Godwin and the Virginia General Assembly in January, 1975. The article will appear in the March issue of the *National Civic Review*, the official journal of the National Municipal League.

Another article by Mr. Stewart, describing major bills enacted by the 1975 General Assembly, will appear in the April issue of the *Review*.

Alumni Office Creates Bureau Seeks Speakers From Campus

The Alumni Office has established a Speaker's Bureau for programs at alumni chapter meetings. Lee Vliet, who is coordinating the bureau, reports that about 30 faculty members and administrators have responded to a preliminary questionnaire sent out early in January. Respondents have offered to speak on subjects

History Department Dissertation Defense

The final examination for William Parks in defense of his doctoral dissertation in history, entitled "The Influence of Scottish Sentimentalist Ethical Theory on Thomas Jefferson's Philosophy of Human Nature," will be held on Friday, March 14, at 3 p.m. in the Blue Room of the Wren Building. The examination is open to members of the William and Mary faculty.

VIRGINIA INSTITUTE OF MARINE SCIENCE

William J. Hargis, Jr., director, was named recently by President Ford to be chairman of the National Advisory Committee on Oceans and Atmosphere. The committee provides continuing review of progress of marine and atmospheric science and service programs.

Senator Elected

Nell Glasgow Wynne of Newport News was chosen in a special election held recently to replace a Day Student S.A. Senator.

Three Elected To Lisle Board

At the annual meeting of Lisle International in Greenwich, Ct., on March 1, Mr. George Cole was re-elected to the board of directors and was elected chairman of the board. Mr. Cole is an associate professor in the School of Business Administration, and a member of the York County Board of Supervisors.

Associate Professor William Bullock and Robert Maidment of the School of Education were also re-elected to the institute's board of directors.

Lisle is an international institute of human relations with a 40 year history of offering programs for college students and young adults which have pioneered in interpersonal and intergroup processes. There are now alumni members in 91 countries.

ranging from Affirmative Action to physics.

Mrs. Vliet is also interested in extending the program beyond local chapters. She urges all faculty and staff members who are attending conferences in cities where there are alumni chapters, to contact her if they would be willing to present a program on a subject which interests them to that chapter.

This month Hans von Baeyer, associate professor of physics, will be speaking on Project PLUS to alumni chapters in Philadelphia and Pittsburgh, and David Holmes, associate professor of religion, will address an Atlanta chapter on Colonial churches in Virginia.

Mrs. Vliet urges all faculty and staff members who are interested in giving such programs to contact her at Ext. 302.

THE CALENDAR

CLASSIFIEDS

WEDNESDAY, MARCH 12

Placement Office Interviews: Leggett Dept. Stores, Morton 104.
 Teacher Placement Interviews: Chesapeake, Va.; Dade County, Miami, Fla., Washington 213, 9 a.m. - 4:30 p.m.
 Wednesday Lunch Group, CC Room D, 12 noon - 1 p.m.
 Residence Hall Life Luncheon, CC Gold Room, 12 noon - 1 p.m.
 Title I In-Service Training Program for Child Day Care Staff, CC Rooms A and B, 1-3 p.m.
 Coffee Hour, French House, 3:30 p.m.
 Evensong, Wren Chapel, 5-6 p.m.
 Student Aid and Placement Committee Meeting, Jones 101, 5-6 p.m.
 Special Education Videotape, Swem G-3, 5-8 p.m.
 PDA Society Initiation Ceremony, Wren Chapel, 6-8 p.m.
 W&M Science Fiction Club Organizational Meeting, CC Room C, 7-9 p.m.
 Circle K, CC Rooms A and B, 7 p.m.
 Bridge Club, CC Sit 'n Bull Room, 7 p.m.
 SA Free University: Beginning Photography, CC Gold Room and Dark Room, 7-8:30 p.m.
 Omicron Delta Epsilon Meeting, Morton 137, 7:30-8:30 p.m.
 Project Plus Forum, Millington Auditorium, 7:30-9:30 p.m.
 Visiting Scholar Benard Knox, "Intellectual Revolution of the Fifth Century," CC Theatre, 8 p.m.
 "Slapwater," Hoi Polloi, 8:30 p.m.
 Recreational Swimming, Adair Pool, 9:30-10:30 p.m.
 Meditation Hour, St. Bede's Church, 11 p.m. - 12 midnight.

THURSDAY, MARCH 13

Teacher Placement Interviews: Norfolk, Va., Washington 213, 9 a.m. - 4:30 p.m.
 Recreational Swimming, Adair Pool, 10:50-11:50 a.m. and 9:30-10:30 p.m.
 Coffee Hour, German House, 3:30 p.m.
 Board of Student Affairs, CC Room C, 3:45-5:30 p.m.
 Episcopal Holy Communion, Wren Chapel, 5 p.m.
 Christian Science Organization, CC Theatre, 5-5:45 p.m.
 Chess Club, CC Room C, 7 p.m.
 Donald Baxter: "Thailand - The Next Vietnam," Asia House, 7:30 p.m.
 Economics Club Meeting, Morton 137, 7:30-8:30 p.m.
 SA Free University: Embroidery, Botetourt Unit 3, Lobby, 8 p.m.
 Culture Films, German House, 8 p.m.
 Prayer Meeting, St. Bede's Basement, 8 p.m.
 WMCF Pop Gospel Concert with Billy Benton, CC Theatre, 8-10 p.m.
 College Women's Club, Flowerdew Hundred Hall of Washington Hall, Dr. Norman Barka, speaker, 8-10 p.m.
 SBA Libel Night Program, PBK, 8 p.m.
 JBT "Good Evening" with Susan Albert, "Foreign Study: W&M Study Abroad Programs," JBT 42, 8 p.m.
 "Amateur," Hoi Polloi, 8:30 p.m.

FRIDAY, MARCH 14

Placement Office Interviews: National Bank of Fairfax, Joseph E. Seagram and Sons, Inc., Morton 104.
 Teacher Placement Interviews: Hanover County, Ashland, Va., Washington 213, 9 a.m. - 4:30 p.m.
 School of Education Faculty Meeting, CC Room C, 2-4:30 p.m.
 History Dept. Dissertation Defense, Wren Blue Room, 3-5 p.m.
 Party, Alphi Chi Omega House, 3 p.m.
 Morton Hall Volleyball Tournament, Adair, 3 and 4:30 p.m.
 Recreational Swimming, Adair Pool, 3-4:45 p.m.
 Tennis: W&M vs. U. of Rochester, Adair Courts, 3:30 p.m.
 Law Fraternities Initiation, Wren Chapel and Great Hall, 4-6 p.m.
 International Circle "Open House," Int'l Circle Cottage on Boundary St., 4-7 p.m.
 Physics Colloquium with Barry Casper, "New Approaches to Scientists and Public Policy," Small 109, 4:30 p.m.
 WMCF, CC Sit 'n Bull Room, 6-7:30 p.m.
 Course on Sacred Scriptures, St. Bede's Parish Centre, 6:30-7:30 p.m.
 Hillel, Temple Beth El, 7:30 p.m.
 SA Films, W&M Hall: "Last Tango in Paris," 7:35 p.m.; "Dr. Strangelove" 10:45 p.m.
 Phi Alpha Delta Invitation Party, CC Rooms A and B, 8 p.m. - 12 midnight.
 Phi Delta Invitation Party, CC Theatre, 8 p.m. - 12 midnight.
 "Passage," Hoi Polloi, 8:30 p.m.
 Pi Kappa Alpha Invitation Dance, CC Ballroom, 9 p.m. - 1 a.m.

SATURDAY, MARCH 15

CPA Preparation Program, Jones 302, 9 a.m. - 4 p.m.
 Circle K Tutoring Program, Washington 203-A, 204, 303, 304, 9 a.m. - 12 noon.
 Delta Omicron Scholarship Competition, Ewell 100, 9 a.m. - 5 p.m.
 W&M Chess Championship, CC Theatre, 9 a.m. - 10 p.m.
 I.F.C. Rush Workshop, CC Rooms A and B, 9:30 a.m. - 12 noon.
 College Women's Club Swim Classes, Adair Pool, 9:30 a.m.
 School of Education Reading Conference, CC Ballroom, 9:30 a.m. - 12 noon.
 Circle K Swim Program, Blow Pool, 10 a.m. - 12 noon.
 Organ Recital, Wren Chapel, 11 a.m.
 International Circle "Open House," Int'l Circle Cottage on Boundary St., 12 noon - 6 p.m.
 Recreational Swimming, Adair Pool, 1-4 p.m.
 Fencing: W&M vs. VMI, U. of Maryland, Adair, 1 p.m.
 Gymnastics: State Intercollegiate Meet, W&M Hall; preliminaries, 1 p.m., finals 7:30 p.m.
 "Quarterpath," Hoi Polloi, 8:30 p.m.
 Tri-Delt Pledge Dance (by invitation only), CC Ballroom, 9 p.m. - 1 a.m.

SUNDAY, MARCH 16

W&M Chess Championship, CC Theatre, 10 a.m. - 10 p.m.
 Fencing (Invitational), Blow Gym, 1 p.m.
 Recreational Swimming, Adair Pool, 1-4 p.m.
 Catholic Mass, followed by dinner, St. Bede's Church, 5 p.m.
 Tap Class, Ewell 100, 7:30-8:30 p.m.
 S.I.M.S. Meeting, CC Room C, 7:30-9:30 p.m.
 Women's Equality Group Committee Meetings, CC Gold Room, 7:30-9:30 p.m.
 SA Film: "The Magician," Millington Auditorium, 7:35 p.m.

MONDAY, MARCH 17

Placement Office Interviews: Strawbridge and Clothier, Union Trust of Maryland, Morton 104.
 Biology Dept. Seminar: coffee, 3:45 p.m., seminar, 4 p.m., Millington 117.

SA Free University: Women's Rights, CC Room D, 7-8:30 p.m.
 Chemistry Dept. lecture by Tom D. Schlabach, Small 113, 8-10 p.m.
 Ba'hai, Wesley Foundation, 8 p.m.
 Recreational Swimming, Adair Pool, 8-9 p.m.
 SA Free University: Bartending, CC Sit 'n Bull Room, 8 p.m.
 Phi Eta Sigma Meeting, CC Sit 'n Bull Room, 8 p.m.
 School of Education Graduate Student Association Meeting and Reception for Dean Yankovich, CC Rooms A & B, 8:30-10:30 p.m.

TUESDAY, MARCH 18

John Roberts Co. Display of Class Rings, CC Lobby, 10 a.m. - 4 p.m.
 Recreational Swimming, Adair Pool, 10:50-11:50 a.m. and 9:30-10:30 p.m.
 Coffee Hour, French House, 3:30 p.m.
 Interhall, CC Theatre, 4 p.m.
 WMCF, Swem G-2, 5-6 p.m.
 Publications Council, CC Room D, 6:30-10 p.m.
 SA Senate, CC Theatre, 7 p.m.
 W&M Outing Club, CC Rooms A and B, 7-9 p.m.
 SA Free University: Scottish Highland Dancing, CC Ballroom, 7:30 p.m.
 Church of Christ Discussion Group, CC Gold Room, 7:30-8:30 p.m.
 Catholic Mass, followed by Faith Renewal Discussion Groups, St. Bede's Church, 7:30 p.m.
 Marshall-Wythe Law Wives Bridge Lessons, CC Sit 'n Bull Room, 7:30 p.m.
 Chemistry Dept. lecture by Tom D. Schlabach, Small 113, 8-10 p.m.

WEDNESDAY, MARCH 19

Placement Office Interviews: Kraftco Corporation, Morton 104.
 Teacher Placement Interviews: Hampton, Va., Washington 213, 9 a.m. - 4:30 p.m.
 John Roberts Co.: Display of Class Rings, CC Lobby, 10 a.m. - 4 p.m.
 Wednesday Lunch Group, CC Room D, 12 noon - 1:15 p.m.
 Residence Hall Life Luncheon, CC Gold Room, 12 noon - 1 p.m.
 Title I In-Service Training Program for Child Day Care Staff, CC Rooms A and B, 1-3 p.m.
 Lacrosse: W&M vs. Yale, Intramural Fields, 3 p.m.
 Tennis: W&M vs. UVA, Adair Courts, 3:30 p.m.
 Graduate Studies Meeting, Swem Conference Room, 4-6 p.m.
 Evensong, Wren Chapel, 5-6 p.m.
 Special Education Videotape, Swem G-3, 5-8 p.m.
 Pi Delta Phi: Initiation Ceremony, Wren Great Hall, 6:30-7:30 p.m.; Reception, CC Rooms A and B, 7-8 p.m.
 SA Free University: Beginning Photography, CC Gold Room and Dark Room, 7-8:30 p.m.
 Circle K, CC Theatre, 7-8 p.m.
 Bridge Club, CC Sit 'n Bull Room, 7-11 p.m.
 Project PLUS Forum, Millington Auditorium, 7:30-9:30 p.m.
 Delta Phi Alpha, CC Room C, 7:30-9:30 p.m.
 Orchestis: "An Evening of Dance," PBK, 8:15 p.m.
 "Sebastian," Hoi Polloi, 8:30 p.m.
 Recreational Swimming, Adair Pool, 9:30-10:30 p.m.
 Meditation Hour, St. Bede's Church, 11 p.m.-12 midnight.

THURSDAY, MARCH 20

Placement Office Interviews: Paralegal Training, Morton 104.
 Recreational Swimming, Adair Pool, 10:50-11:50 a.m. and 9:30-10:30 p.m.
 Tennis: W&M vs. ECU, Adair Courts, 2-6 p.m.
 Coffee Hour, German House, 3:30 p.m.
 Episcopal Holy Communion, Wren Chapel, 5 p.m.
 Christian Science Organization, CC Gold Room, 5-5:45 p.m.
 Chess Club, CC Room C, 7-11 p.m.
 SA Free University: Embroidery, Botetourt Unit 3 Lobby, 8 p.m.
 Culture Films, German House, 8 p.m.
 Prayer Meeting, St. Bede's basement, 8 p.m.
 Orchestis: "An Evening of Dance," PBK, 8:15 p.m.
 Spring Break Party with "Sebastian," Hoi Polloi, 8:30 p.m.

FRIDAY, MARCH 21

Spring Break: Begins at 5 p.m. - ends April 1 at 8 a.m.
 Tennis: W&M vs. UVA, Adair Courts, 3:30 p.m.
 Course on Sacred Scriptures, St. Bede's Parish Centre, 6:30-7:30 p.m.
 Hillel, Temple Beth El, 7:30 p.m.

Campus Security Log

Mar. 1/12:15 a.m. Two students detained for manufacturing and attempting to light a homemade projectile. Report submitted to Dean of Students.

Mar. 4/7:30 a.m. Apparent arson discovered in Yates Dorm. Investigation to continue.

Mar. 4/9:20 a.m. Broken lock discovered on door to tunnel in basement of Wren Building. Investigation to continue.

These items were reported stolen and are under further investigation:

Feb. 27/12 noon Wallet taken from purse in office in James Blair Hall.

Feb. 28/8:25 p.m. Bar stool taken from recreation room in Old Dominion Hall. Subsequently returned by student who had borrowed it.

Feb. 28/1:30 p.m. Headlight taken from car parked in Infirmary Parking Lot.

Mar. 1/6 p.m. Mans short brown corduroy coat and a set of keys taken from coat rack in Millington Hall.

Mar. 6/2 a.m. Green William and Mary jacket taken from Pub.

Mar. 5/3 p.m. Blue Peugeot U-08 10-speed bicycle taken from balcony stairs of Sigma Chi Fraternity House.

Safety Slogan: "Slowdown - be safe."
 Submitted by Peggy Bogle, English Department.

FOR SALE

Admiral air-conditioner, 14,000 BTU's, excellent condition, \$200; one twin bed, \$15; 30-gallon aquarium, fluorescent light plus all accessories, \$50. Call 229-5678. (3/11)

Gas stove, Brunswick "Royal Rose", 4 burners, broiler and oven, \$40; refrigerator, Hotpoint, full size, \$15. Call 229-7052. (3/11)

Fruitwood desk/bureau w/4 drawers and mirror, formica top, like new, \$60. 12-string guitar, mahogany, beautiful condition, \$55. Kanakal Ukelele w/capo \$15. Wicker couch and chair, both for \$45. Large brown rug \$20. '65 Tr. Spitfire \$500. Call Judy, 220-1362. (3/11)

Baby crib, complete with mattress. Excellent condition, has been used only for rare visits by grandchildren. 229-1086. (3/18)

Men's Koflach ski boots, size 9, \$15; Philco portable stereo, new cartridge, \$25; 8-volt marine battery, \$10; motorcycle helmet, used very little, medium size, \$20. Call 220-0327. (3/18)

Williamsburg West, lovely fully-carpeted, tri-level home on golf course; 3 BR, LR, DR, eat-in-kitchen, large family room, 2 baths, screened porch, central AC, garage. Quiet surroundings. \$47,250. Call 229-9679. (3/18)

Sears shredder with extra chute. Excellent condition - used two seasons. Bargain at \$85. 229-4126. (3/25)

'72 Honda CB-100, excellent condition. 2 helmets and all accessories. \$300. Call 220-0455. (3/25)

2 brand new, never-used Dunlop-Maxply Fort Tennis rackets. Victor gut, strung at 57 lbs., \$45 each or best offer. Call 220-1421. (3/25)

MISCELLANEOUS

For sale: 400 used books - for sale, for trade, for barter on any item. Wanted to buy: portable b/w TV (\$25 - \$50); 45 and 33 rpm records - folk and rock 'n roll (25 cents - 50 cents); old men's magazines (25 cents per copy); small refrigerator (\$25 - \$50), Call Ext. 616. (3/11)

FOR RENT

Jamestown Farms: 4 bdrms. 1 1/2 baths, LR with dining area and fireplace, eat-in kitchen, double garage. \$300 per month. 229-6652. (3/25)

For married students (or teachers) of W&M only: attractive three-room apartment, reasonable. Phone 229-1929. (3/25)

WANTED

Comic books, all types. Also interested in science fiction books, magazines of all types, and all nostalgia items. Top prices paid! No amount too large or too small. Call Craig Jackson, ext. 442. (3/18)

Ride needed during Spring break to Colorado (Durango, ideally) or within 500 miles. Expenses. Call Ext. 531: Doug or Skip. (3/18)

FOR SALE/RENT

3 bedroom, 2 1/2 bath townhouse. Wall-to-wall carpet, fenced-in yard. Livingroom, diningroom, fully equipped kitchen, utility room, and patio. Located in Denbigh. Call 599-5013 after 6 p.m. and all day on the weekend. Ask for Bridget. (3/11)

LOST

A necklace with multi-colored mosaic pattern heart-shaped stone on gold chain. Of great sentimental value to owner. Please call Ext. 265. (3/18)

Texas Instruments SR 11 Calculator lost in area of Jones Hall. Engraved on back: "M. Stall, 231-84-4800." Generous reward offered, no questions asked. Call Mark Stall, ext. 254. (3/25)