

William and Mary News

VOLUME IV, NO. 5

TUESDAY, SEPTEMBER 30, 1975

Graves Issues Statement On Marshall-Wythe

Continued delay on funding a new building for the William and Mary law school is now seriously jeopardizing the school's accreditation, and emergency action by the State is required, President Thomas A. Graves, Jr. warned last week.

See pages 4-5 for text
of statement on law school

The warning was based on a reinspection of the school's facilities by a representative of the Council of Accrediting of the American Bar Association last month. Following this visit, the representative advised Graves and James P. Whyte, Jr., then law school dean, that the William and Mary building is "the most inadequate physical plant of any ABA approved law school in the country."

The new ABA warning was discussed Sept. 19-20 during the quarterly meeting of Wil-

liam and Mary's Board of Visitors. The Board authorized President Graves to bring the matter to the "direct attention" of the Governor and other key State and legislative officials.

Dr. Graves said at a press conference Wednesday that he had done so in letters sent to the appropriate officials.

Dr. Graves pointed out that a new building for the past three years has been the highest priority of the College. He also cited a position paper of December, 1974 in which the State Council of Higher Education formally declared that William and Mary's "old and respected law school" warrants

Continued on page 6

College's Collection of Art Features 18th Century Portraits

During its long history, the College has acquired a fine art collection, and some of the best

of that collection is on display daily for the general public.

Donated by alumni and friends of the College, it includes paintings, sculpture, prints, ceramics and porcelains from Western Europe, the Orient and America.

One of the collection's greatest strengths is a group of fine 18th century portraits, several of which hang in the Sir Christopher Wren Building.

In the gallery on the second floor are portraits of 13 William and Mary presidents, from James Blair to Davis Y. Paschall, who retired in 1970.

Over the fireplace in the Great Hall hangs a large portrait of Queen Anne, one of the College's early benefactors. The Wren Building, then called simply the College Building was ravaged by fire in October, 1705, and for three years the young College struggled for its existence. In March, 1708, by Royal Warrant, Queen Anne bestowed upon the College 500 pounds to rebuild the main College building. Her gift was duplicated the next year.

Her portrait, from the school of Kneller, was a gift to the College from the Drapers' Company of London upon the occasion of the inauguration of Dr. Paschall as president in 1961.

Also in the Great Hall are

portraits of members of the Warner Lewis family as well as one of Robert Boyle, another of the College's early benefactors. When Boyle, an eminent natural philosopher, died in England in 1691, he provided that 4,000 pounds sterling of his money should be employed in "pious and charitable uses." Several years later the Rev. James Blair, first president of W&M, was able to persuade the executors of Boyle's estate to direct a fund under this provision to the support of an Indian School at the College. The Brafferton, the second oldest building on campus which now houses administra-

Continued on Page 2

Two Grad Students Cited For Outstanding Teaching

Two students currently enrolled in the School of Education's graduate program were named as outstanding young educators by the Williamsburg Jaycees last week for their work in local schools.

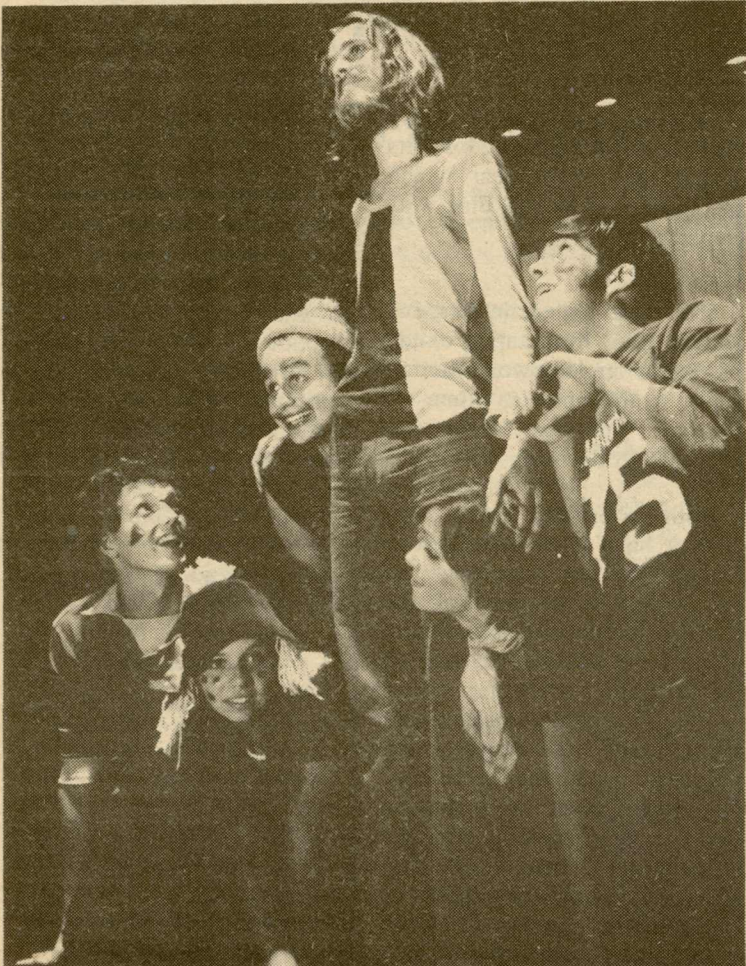
Connie Watson, a William and Mary graduate working on a Master of Arts in Teaching of English, won the top award for her classroom work at Lafayette High School and her work with

the student newspaper and literary magazine.

Runner-up in the balloting was Stephen Lewis, a mathematics teacher at Queens Lake Intermediate School, who was cited for his continuous efforts to find ways to improve his courses and for work with the Student Cooperative Association. Lewis is working toward a master of arts degree in teaching mathematics. He is a graduate of Campbell College, N.C.



The Battle of Dunkirk by John Singleton Copley (1738-1815) is among works in the College Collection. The painting hangs in Wren 100, the College's Information Room.



The William and Mary Theatre opens its fiftieth season on Thursday, Oct. 2, with "Godspell," a musical based on The Gospel According to St. Matthew. Performances will be given Oct. 2, 3, 4 and 9, 10, 11 at 8:15 p.m. in Phi Beta Kappa Hall.



President and Mrs. Graves held a reception Saturday for foreign students at William and Mary. They are pictured above with several of the students who attended.

Russian Physicist Will Lecture On Education

Education in the Soviet Union is the topic of a public lecture that will be presented on campus by a visiting Russian physicist.

Yurii N. Demkov, professor of physics at the Leningrad State University, will speak Monday, Oct. 6, at 4:30 p.m. in 113 William Small Hall. Coffee will be served in the Physics Conference Room prior to the lecture.

Demkov has been visiting the United States during the past year under the auspices of the Joint Institute for Laboratory Astrophysics in Boulder, Colorado.

Piano Recital Slated

The Music Department will sponsor a piano recital by Meade Crane in the Campus Center Ballroom on Tuesday evening, Oct. 7, at 8:15. Mr. Crane is currently a student at the Peabody Conservatory of Music in Baltimore and studies with Fernando Laires.

Mr. Crane began his piano studies at the age of five. When he was eight years old, he was soloist with the Fort Worth Symphony Orchestra, and a year later he played with the Wichita Falls Symphony. Crane studied at the Interlochen Arts Academy and since 1972 has presented numerous recitals. He has been invited for a second successive year to participate in the annual festival of the American Liszt Society.

In the Tuesday recital Mr. Crane will play Beethoven's F Major Variations, Stravinsky's Petrushka, and the Eighth Piano Sonata of Prokofiev.

There is no admission charge for this recital.

MBAA Invites Entries In Stock Market Contest

Monday, Oct. 6, at 5 p.m. is the deadline for submitting portfolios for the MBA Association's fall semester stock market contest.

The contest is open to all students and College employees. Each participant submits a portfolio with a \$10,000 hypothetical investment in anywhere from three to ten stocks. The portfolio showing the greatest return on that original investment when the contest period ends Dec. 5 wins the \$100 first prize. Second, third and last place prizes will also be awarded.

New this year is a special prize to be awarded to the fraternity submitting the most profitable portfolios.

MBA students will run all calculations necessary on the computer and will post weekly results in the MBA Association office.

Entry forms and further information will be available Oct. 3-6 in the MBA Association office, 203 Jones Hall, Ext. 543. The entry fee is \$1 per portfolio.

Winners will be announced early in December.

Collection Features Wide Variety

Continued from First Page
tive offices, was built in 1723 to house the Indian School. The portrait of Boyle was given to the College by Boyle's nephew and executor of his estate, the Earl of Burlington, and began a long list of gifts of portraits to the College through the years.

Busts of Washington and Jefferson are also on display in the Great Hall.

The Blue Room in the Wren Building contains four 18th century portraits of prominent figures in William and Mary's history. They include portraits of James Blair and his wife, Sarah Harrison Blair, and King

Volleyball Tourney

Students, faculty and staff are invited to participate in the Bryan Complex Invitational Coed Volleyball Tournament, Oct. 4 and 5.

Sign-up deadline is 5 p.m. tomorrow in the Residence Hall Life office.

According to tournament organizers, the double elimination will be strictly coed, with three males and three females on each team.

For further information, contact Greg Campbell, 229-4971.

Edwin Godshall To Present Medieval University Talk, Oct. 8

H. Edwin Godshall, Jr., lecturer in music, will perform an organ recital at Bruton Parish Church, tonight at 8 p.m. Godshall is also organist at St. Bede's Roman Catholic Church.

A native of Lansdale, Penn., he received his B.A. in German from William and Mary in 1966. He spent his junior year studying at the University in Freiburg-Breisgau, Germany. Godshall also has a master's degree from Temple University and has done further graduate work at the University of Virginia and at Virginia Commonwealth University. He has held teaching positions in German at William and Mary, Temple University and the University of Virginia.

During the past year he has served as musical director for

the Williamsburg Players' production of "Another Evening with Noel and Cole."

The candlelight recital will include works by Buxtehude, Stanley, and Widor. Featured will be the Variations on "America" by the twentieth-century American composer Charles Ives, and two pieces by William Selby, an English-born composer who emigrated to the Colonies just before the Revolution to become organist at King's Chapel, Boston.

Society Chooses Officers

The College's South Asia Society, founded last year to generate interest in the peoples and cultures of South Asia and to complement Asia House programs, has named its officers and advisors for 1975-76. They are President James Lett '77, New Providence, N.J.; Vice Presidents Ram Lal Munjal, physics graduate student from India; and Cindy Castle '76, Williamsburg; and Secretary-Treasurer Traci L. Gage '76, Dunwoody, Ga.

Advisers are S.N. Pillai, accountant for the acquisitions department of Swem Library, and Mario D. Zamora, visiting professor of anthropology.

Membership in the Society is open to any interested member of the College and Williamsburg communities.

The Great Hall of the Wren Building will be the setting for the Oct. 8 Project Plus lecture on "The Medieval University."

Thomas M. Finn, head of the religion department, will lecture at 7:30 p.m.

The public is invited to attend.

Professor Finn joined the William and Mary faculty two years ago. A specialist in the history of theology and the early church, he received his doctorate from Catholic University. He was a member of the faculty of St. Paul's College, Washington, D.C., from 1966-67 and of Syracuse University, 1967-69. Prior to coming to William and Mary, he served as editor-in-chief of G.K. Hall publishers.

Concert Series Sold Out

Season Tickets for the William and Mary Concert Series are sold out.

Director Warren J. Green reports this year's sales were brisk, and for the second consecutive season all concerts are sold out.

Any available seats for individual concerts will be sold at the box office the night of the performance. There will be no advance sale of individual tickets.

William and Queen Mary for whom the College was named.

Chrysler Collection

In the lobby of Ewell Hall, adjacent to the Wren Building, a collection of selected paintings from the Jean Outland Chrysler Collection is on display.

The Chrysler Collection, given in 1964 to the College by

Mrs. Chrysler, an alumna, has been enlarged by Mrs. Chrysler with significant additions in 1967 and 1973. Emphasis of the collection, which includes drawings, oils, watercolors, sculpture and glass, is on American abstract expressionist painting of the 50's and 60's.

Portraits in Swem

In the Virginia Room and Botetourt Gallery on the ground floor of Swem Library are Bolling and Randolph family portraits attributed to John Durand, Gustavus Hesselius, William James Hubbard, John Hesselius and John Wollaston.

All but one of the Bolling and Randolph family portraits now hanging in the library are the gift of the late Mr. and Mrs. Robert Malcolm Littlejohn of New York City. They were presented to the College in memory of Robert Bolling I, founder of the Bolling family in Virginia, from whom Mrs. Littlejohn was descended. A

portrait of Jane Bolling Randolph Walke, included in the collection, was given by Mr. and Mrs. O.W. June of New York City.

The small gallery in Andrews Hall is used for rotating exhibits during the school year which are sponsored by the Fine Arts Department.

The large gallery in Andrews Hall is used for rotating exhibits, often student work, and is used from time to time to display paintings from the Chrysler Collection.

Both President and Mrs. Graves have been interested in recognizing the importance of the various collections of the College and the part they should play in the life and heritage of the College.

The President's House contains many art objects and paintings from the collection. President Graves has indicated that he is concerned that the items in the College's collection are not readily available or displayed as extensively as he would like them to be.

"We owe the donors of our collections and the people of Virginia the opportunity to have the collection on display," said

President Graves.

A panoramic scene of the Battle of Dunkirk during the Napoleonic Wars, painted by John Singleton Copley (1738-1815), is hung in room 100 of the Wren Building which is used as an information center for visitors to the College.

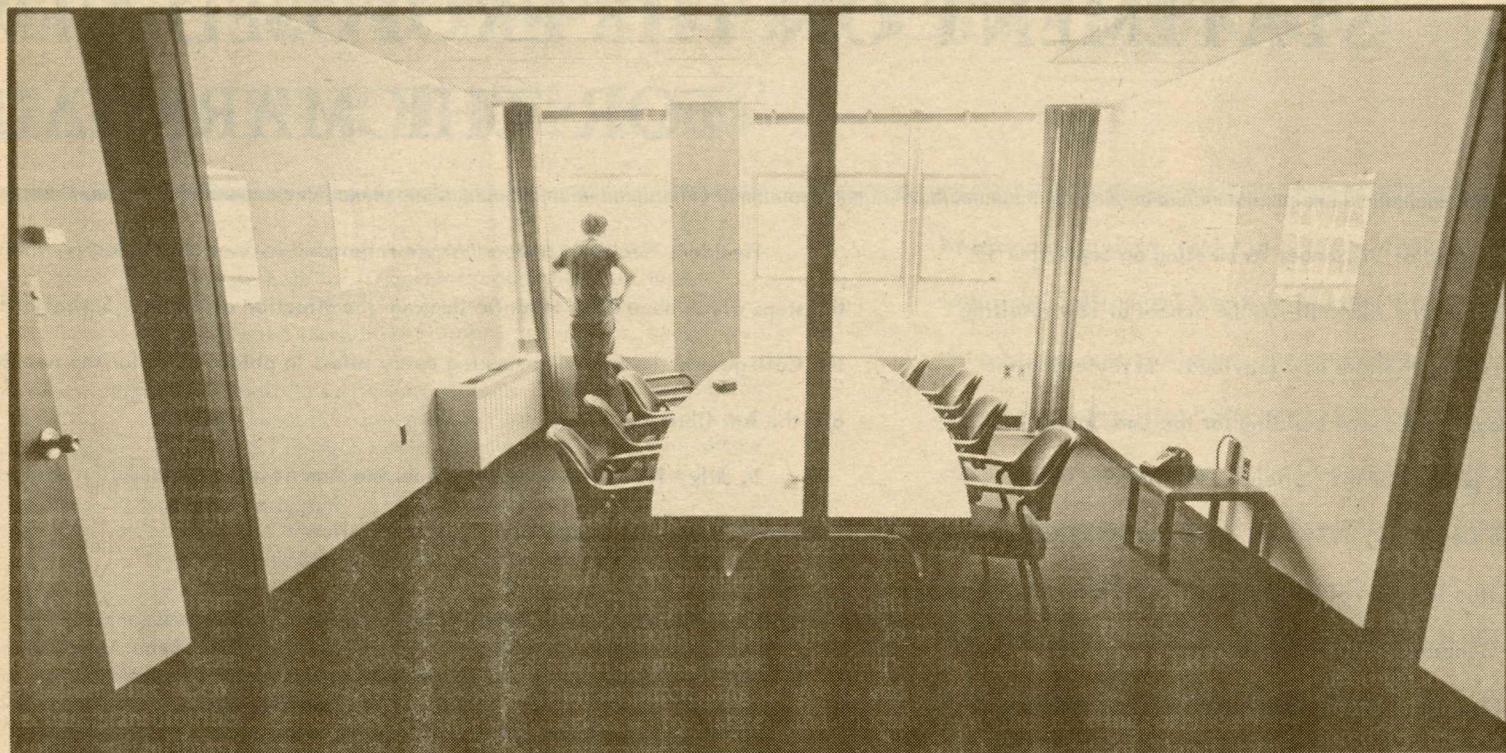
Catalogue Undertaken

A comprehensive catalogue of the collection was undertaken in 1973 to update and collate previous catalogues under the direction of Miles Chappell of the fine arts faculty and is continuing under the direction of the registrar of the College collection, Mrs. Louise Lambert Kale.

W&M NEWS

Volume IV, No. 5
September 30, 1975

Published weekly through the Office of Information Services by the College of William and Mary for faculty, staff and students. Produced by the College News Office, 125 Richmond Road. Inquiries should be directed to Marjorie N. Healy, Information Officer. Mailed to addresses of employees as on record at the Personnel Office. James Blair Hall, to which Office address changes should be directed.



Slides and prints by Lyle Rosbotham, photographer and staff member in the anthropology department, are among works selected for the Virginia Museum's "Virginia Photographers 1975" exhibit.

The exhibition begins Sept. 30 at the Virginia Museum in Richmond and will run through Oct. 26.

Lyle Rosbotham

Energy Exhibit To Be On Campus Thursday

The American Petroleum Institute's traveling energy exhibit "New Frontiers for Energy--Project '76," will be open free to the public all day Thursday, Oct. 2, at the Campus Center.

The sparkling red-white-and-blue exhibit unit, on tour of seven East Coast states and the District of Columbia, uses a series of illuminated slides, transparencies, maps and charts to relate interesting aspects of America's energy use and resources. It projects America's future energy requirements and explores ways of meeting them. Particular emphasis is placed on

stepping-up oil and gas exploration and development on the Outer Continental Shelf.

Special exhibit features include a five-foot model of an offshore oil and gas production platform, and two electronic devices, one for answering visitors' questions and the other for recording visitors' opinions on offshore exploration for oil and gas. Those who may be waiting in line to see the exhibit also have something to look at. "New Frontiers" features a brief movie on American history visible on the outside of the exhibit unit.

Women's Teams Are Predicting Successful Fall Sports Season

Despite the torrential rains which have plagued players and coaches, women sports are optimistic and looking forward to good seasons in tennis, golf and field hockey.

Forty-five tried out for the 18 spots open in tennis this fall.

Catharine Scheibner is new this year as coach of the junior varsity. Millie West is varsity coach.

William and Mary will be represented by six players at the Eastern Collegiate Tournament in New Paltz, N.Y., Oct. 3-5. Jane Lennon and Kathy Lindsey will play singles, and Libba Galloway, Lynn Russell, Maria Malerba and Amy Moll are entered in doubles.

The varsity team has a heavy schedule this year and will play most of its games away. The first home match is Oct. 14 at 3:30 p.m. against Mary Baldwin. The J.V. team will play area high school tennis players Oct. 1 at 3:30 p.m. at home.

The tennis team last year was second in the state, losing out to UVA.

Ann Lambert, golf coach, says that she is thrilled to have the facilities of the Kingsmill on the James course and forecasts "an ideal season," if the rain would stop falling and the mosquitoes stop biting.

With a "home course" this year for the first time, the team will play two home matches, Oct. 7 against Madison and October 24 against Randolph Macon Women's College. Nassau match play is used for all team matches and medal play for tournaments.

The team plays in an Invitational tournament at Mary Baldwin Oct. 3-4 which will include entries from 18 schools in Virginia, North Carolina and South Carolina.

Carrying the W&M colors this year in golf are Kathy Allen, Tina Brashers, Robin Brown, Mary Lou Cumberpatch, Charlotte Dyer, Carol Freedman, Debby Jackson, Katrina Kipp, Beth Lett, Melissa McFarland, Connie Ritter, Kathy Schmidt, Susan Watson and Priscilla Wood.

The field hockey team, which ended last season with a five win, one loss, two ties, is out for the number one spot in the state this year. The team is looking for a defeat over Longwood in a home game, Oct. 2 at 3:30 p.m. on Barksdale Fields.

Part of the confidence Nancy Porter's players have this fall comes from some special coaching team members received from Richard Kentwell, coach of the U.S. Olympic team who was on campus earlier this month for a weekend clinic.

Coach Porter characterizes the team as "young but very good and very enthusiastic." The only senior on the team is the captain, Jo Ousterhout. Other members of the team are Kim Buchanan, Nelda Casper, Cindy Heldt, Barbara Logan, Heather Medrum, Susan Morrison, Sheryl Proscino, Ginny Ramsey, Susan Simone, Susan Wright, Christina Wood and Michelle Zimmer.

The team hopes to do well enough in the regionals to gain a spot in the National Collegiate championships, which will be held at Madison College over the Thanksgiving holiday.

Visiting French Teacher, Critic To Discuss Women and Writing

Germaine Bree, internationally acclaimed critic and teacher of contemporary French literature, will speak on "The Writer's Profession: The Woman's Point of View", in a public lecture to be given Oct. 8 in Millington Auditorium at 8 p.m.

Her publications, in both French and English, include works on Marcel Proust, Andre Gide, Jean-Paul Sartre, Albert Camus and, more recently, "Women Writers in France", in which she analyses the participation of women in French literary creativity from medieval to modern times.

During her academic career, she has taught at Bryn Mawr College, Wellesley College, the Washington Square Campus of New York University and held, for some twelve years, a chair in the Institute for Research in the Humanities at the University of Wisconsin-Madison.

Since 1973, she has been Professor of French at Wake Forest University, Winston-Salem, North Carolina. The recipient of many academic awards, Ms. Bree was also decorated by the French government as a Chevalier de la Legion d'honneur.

Her talk, sponsored by the department of modern languages and literatures, will be given in English and the public is invited to attend.

'Creative Anachronists' To Joust

Regional members of a national organization that is "dedicated to the re-creation of the Middle Ages, not as they were, but as they should have been" will stage a medieval fighting practice on campus this weekend.

Members of the Society for Creative Anachronism will begin the practice session around 1 p.m. (exact timing was not a feature of life in the Middle Ages) on Sunday, Oct. 5, at the field between the Commons and Botetourt Residence.

The fighting practice has been planned through Project Plus.

Members of the society choose a country and a time period before 1650 and try to individually re-create that period.

All members of the College community are invited to attend.

Members of the College community will have an opportunity to donate blood when the Red Cross Bloodmobile is in the area on Monday, Oct. 8, from 11 a.m. to 5 p.m. at the Williamsburg United Methodist Church, 514 Jamestown Road.

At the last visit of the Bloodmobile on July 28, donations exceeded by three pints the 100 pint quota. Twenty students and 12 employees contributed nearly a third of the total donation.

At the July Bloodmobile visit two students, Robert C. Lorigan and Peter C. Krone, and an employee, John C. Blush, were awarded one gallon pins. Dennis K. Cogle, assistant to the vice president for business affairs, received a ten gallon pin.

Theatre Slates Auditions

All members of the college community are invited to audition for the second William and Mary Theatre production of this season, Lanford Wilson's earthy comedy called "The Hot L Baltimore." Auditions will be held starting at 7 p.m. Monday and Tuesday, Oct. 6 and 7, in Phi Beta Kappa Memorial Hall.

"The Hot L Baltimore" was winner of "Best American Play of the 1972-73 New York Season," and will be presented Nov. 19, 20, 21, and 22.

Louis E. Catron, director of "Hot L," emphasizes that auditions are open to students, faculty, staff, administration, and spouses.

Reading copies of "Hot L Baltimore" are in the Reserve Room of Swem Library.

Yamada Named Council Head

Gayle Yamada, a senior from Arlington, Va., has been named chairperson of the honor council.

William and Mary was the first college in America to establish the honor system which was introduced at the College in 1779 by Thomas Jefferson.

Council members include Maureen Lucey, vice chairperson, McLean, Va.; Nancy Turrentine, president of the senior class, Nashville, Tenn.; and John Weiner, Cherry Hill, New Jersey, from the senior class; and Lisa Bolanovich, Pittsburgh, Pa.; Kathy Eason, Richmond, Va.; George Tsahakis, Roanoke, Va.; and Cathy Wilson, Falls Church, Va., from the junior class.

Representatives from the sophomore class include Kevin Dunn, Ramsey, N.J.; Betsy Page, Storrs, Conn.; Elizabeth Sowder, Roanoke, Va.; and Jane Tylus, Morris Plains, N.J.

STATEMENT ON THE PROPOSED NEW BUILDING AND IMPROVED LAW LIBRARY FOR THE MARSHALL-WYTHE SCHOOL OF LAW

President Graves reported to the Board of Visitors at its meeting on September 19 regarding the serious and critical situation at the Marshall-Wythe School of Law resulting from the wholly inadequate physical facilities that are now provided. In reviewing the continuing problem, he reminded the Board that a new building for the Law School has been for the past three years the highest priority of the College. This priority was documented in a position paper developed in December, 1974, and presented to the Governor, the State Council of Higher Education, the Division of the Budget, the Division of Engineering and Buildings, and the members of the General Assembly at that time.

In December, 1974, the State Council of Higher Education took the following position, as quoted in the position paper:

The College of William and Mary has an old and respected law school. The Council recommends that the Commonwealth would do well to increase its support from a marginal level to one which will enable it to maintain its reputation as a strong law school of national stature. With this support, especially in constructing its new building, the law school at The College of William and Mary will be able to expand to almost double its present size should any unforeseen need for lawyers develop.

The Council concludes... that the problems now facing the Marshall-Wythe School of Law can be remedied. ... In a time of financial exigency and increasing competition on the State's purse, it is clearly preferable to maintain and improve existing services in higher education and to increase where possible the entry-level access to higher education which clearly benefits far greater numbers of Virginians...

The 1975 General Assembly, which had voted planning funds of \$218,250 for the proposed new Law School building in 1974 (those plans now being complete) did not provide these funds for the construction of the building at the 1975 Session.

Priority number one among proposed capital outlay projects for the 1976-78 biennium continues to be for the College of William and Mary the new Law School building, estimated at \$5,592,050, and this proposal will be the major focus of the College's budget request at the 1975 General Assembly.

President Graves reminded the Board that in March, 1975, the Law School was visited by a consultant from the Council of the Section of Legal Education and Admissions to the Bar of the American Bar Association. This visit was the result of a routine reinspection of the School (documented in the position paper of December, 1974) by the American Bar Association in August, 1973, which identified budgetary and space problems of a serious nature. The consultant summarized his major conclusions in May, 1975, in a letter to President Graves and Dean Whyte as follows:

The Law School has possibly the most inadequate physical plant of any ABA approved law school in the country.

The President and Dean reported to me on their plans for construction of a new law school building which would be built adjacent to the proposed building for a national center for state courts. It was reported to me that there was no possibility of funding this in the current session of the legislature but that the matter remained very high on the list of priorities, both within the College of William and Mary and the College within the State budget. It is my opinion, given the dearth of adequate and satisfactory condition of the facilities at the College of William and Mary, this building should be of the very highest priority, both within the College and within the State College System. Continued instruction and research in existing facilities is not possible. I call to your attention Standard 701 of the ABA Standards for the Approval of Law Schools, which states:

701 The law school shall have a physical plant that is adequate both for its current program and for such growth in enrollment or program as should be anticipated in the immediate future.

The consultant also expressed concern about other inadequately supported aspects of the Law School program, but the major thrust of his report focused on the problem of physical facilities and the law library.

President Graves and Dean Whyte responded in June to this letter, indicating the steps which have been taken to improve the situation at the Law School and committing the College and the School to making every effort to obtain funds for the new building and the law library.

In July, 1975, the consultant from the American Bar Association wrote again to President Graves and Dean Whyte in part as follows:

I am writing you with regard to the action taken by the Council of the Section of Legal Education and Admissions to the Bar of the American Bar Association and its Accreditation Committee at their meeting on July 10-13, 1975. The College of William and Mary and its Marshall-Wythe School of Law were considered in response to a progress report submitted by both of you, dated June 3, 1975, and the report of the Consultant as the result of his visit to the Marshall-Wythe School of Law of the College of William and Mary on March 19, 1975. As you know, the American Bar Association is the official accrediting organization as recognized by the United States Department of Health, Education and Welfare.

The resolution of the Council of the Section of Legal Education and Admissions to the Bar is as follows:

WHEREAS, the Council has received and considered the progress report of President Graves of the College of William and Mary and Dean Whyte of its Marshall-Wythe School of Law dated June 3, 1975, and the report of the Consultant on Legal Education to the American Bar Association as the result of his visit to the College of William and Mary on March 19, 1975; and

WHEREAS, The Council has considered the recommendations of its Accreditation Committee; and

WHEREAS, The Council notes very grave concern with regard to the following matters:

- 1) the continued inadequacy of the law building of the Marshall-Wythe School of Law and the fact that portions of the School of Law are housed in four additional buildings other than the building of the School of Law;
- 2) the continued inadequacy of faculty salaries of the Marshall-Wythe School of Law, which are below the national median and below those schools in the geographical area in which the School is located;
- 3) the continue inadequacy of professional staffing support for the law library;
- 4) the continued need for additional strengthening of the law library;

NOW, THEREFORE, BE IT RESOLVED, that the President of the College of William and Mary and the Dean of its Marshall-Wythe School of Law are hereby notified pursuant to Rule IV (2), Rules of Procedure for Approval of Law Schools by the American Bar Association, that the Council has reason to believe that the Marshall-Wythe School of Law of the College of William and Mary has failed to maintain the Standards established by the American Bar Association. Further, that unless the deficiencies shown in this resolution are resolved satisfactorily on or before December 1, 1975, the Marshall-Wythe School of Law of the College of William and Mary will be placed on the agenda of the Accreditation Committee at its first 1976 meeting for the purpose of determining whether a notice for a hearing shall issue.

You will note that this resolution requests a response on or before December 1, 1975. Under language of the resolution, the Council of the Section of Legal Education and Admissions to the Bar hereby notifies the President of the College of William and Mary and the Dean of its Marshall-Wythe School of Law of the deficiencies and asks for an explanation of them. The Council will then determine whether the School is, in fact, not in compliance with the Standards and Rules of Procedure for Approval of Law Schools. If the Council feels the College of William and Mary and its Marshall-Wythe School of Law are not in compliance with the Standards for Approval of Law Schools, it will take appropriate action for removal of the College of William and Mary, Marshall-Wythe School of Law from the list of law schools approved by the American Bar Association.

The consultant's letter continued as follows:

Items of concern to the Council are the following:

- (1) Inadequacy of the building, and the fact that the School of Law is housed in four additional buildings other than the School of Law. I wish to call to your attention Standards 701, 702, 703, 704 and 705 of the ABA Standards for Approval of Law School, which state:

701 The law school shall have a physical plant that is adequate both for its current program and for such growth in enrollment or program as should be anticipated in the immediate future.

702 There shall be sufficient adequate classrooms and seminar rooms to permit reasonable scheduling of all courses and there shall be such additional rooms as may be necessary adequately to provide for all other aspects of the law school's program.

(a) The physical facilities shall be under the exclusive control and reserved for the exclusive use of the law school. If the facilities are not under the exclusive control of the law school or are not reserved for its exclusive use, then the arrangements must permit proper scheduling of all law classes and other law school activities.

(b) Adequate provision should be made for the conduct of moot court programs, both at the trial and appellate level, either by a separate courtroom, or one or more classrooms that can readily be adapted to such a program, or by reasonably available public courtroom facilities.

703 Each full-time member of the faculty shall have a private office. In addition, suitable office space shall be provided for the use of part-time faculty members.

704 Space for study purposes shall be provided in the law school library or in an adjacent law school facility that is sufficient to accommodate at the least the following percentage of the total enrollment: if the school is exclusively a day school, 40 percent; if the school is exclusively an evening school, 25 percent; if the school has both day and evening divisions, 40 percent of whichever division is the larger. In addition to the regular study area, there shall be one or more suitable areas in which students may gather in small groups for discussion.

705 There shall be adequate areas for secretarial and administrative personnel and for the maintenance of all necessary records. These areas shall be in close proximity to the persons or offices served thereby.

(2) The Council expressed additional concern about the continued inadequacy of the faculty salaries of the Marshall-Wythe School of Law which are below the national median and below salaries paid to faculty in most of the ABA approved law schools within your geographical region.

(3) The Council expressed concern about the continued inadequacy of the professional staffing for the law library.

(4) The Council expressed concern with regard to the continued need for additional strengthening of the law library.

(8) Finally, the Council expressed concern that the College of William and Mary and its Marshall-Wythe School of Law was not in full compliance with the ABA Standards for Approval of Law Schools. I wish to call to your attention Standard 105 of the ABA Standards for Approval of Law Schools, which states:

105 An approved school should seek to exceed the minimum requirements of the Standards.

The Council resolution is intended to notify both of you of the apparent deficiencies of the College of William and Mary and its Marshall-Wythe School of Law and to ask you to report on these matters in order to permit the Council and its Accreditation Committee to determine whether or not the School is in compliance with the Standards for Approval of Law Schools, and, if not, to recommend appropriate action for the removal of the Marshall-Wythe School of Law of the College of William and Mary from the list of schools approved by the American Bar Association.

The Council of the Section of Legal Education and Admissions to the Bar has requested that this report be made to the Council as soon as possible and no later than December 1, 1975. The Council of the Section of Legal Education and Admissions to the Bar has asked me to assist both of you in any way you might find helpful in preparing your response to the Council and the Accreditation Committee's concerns. I am available to assist you in your response, including a visit to meet with you and your Trustees and the law school faculty to discuss the action of the Council and its Accreditation Committee if you believe such a visit would be helpful.

President Graves reported to the Board that both Dean Whyte and his successor, Acting Dean Fischer, have been in continuing contact with the consultant from the American

Bar Association since receipt of the July letter, and that all possible steps are being taken within the College and School to be responsive to the recommendations of the ABA, within the resources now available. The consultant will be visiting the School again this fall to review the further steps being taken to strengthen the School, so that he may assist the administration in its report to the Council later this year.

Dr. Graves informed the Board of Visitors that, in view of the ABA Council action, and despite all of the efforts that are being made to alleviate problems of inadequate space and resources, the situation at the Law School is of an emergency nature. Failure to provide a new law school building and adequate funding for a law library at the College of William and Mary is seriously jeopardizing the Law School's accreditation. Continued lack of positive action on the matter is threatening the future of the oldest professional law program in America.

President Graves pointed out further that continued uncertainty as to the much-needed new physical plant and an adequate law library would make it difficult to attract an eminently qualified person to provide leadership to the Law School as its new Dean. The decision of the National Center for State Courts to locate in Williamsburg was based on the assumption that the new building of the Law School would be adjacent to its headquarters on College land; and a substantial portion of the original pledges for the National Center are conditional upon the new School building's being authorized for construction. The Faculty of the Law School has continued to maintain a high quality of instruction and morale among the students despite inadequate resources and serious overcrowding, but this high level of education cannot be maintained for long in the face of continuing uncertainties as to the future.

The Board of Visitors, in response to this report from Dr. Graves, directed him to take all appropriate steps to bring the serious problem at the Law School to the direct attention of the Governor, the State Council of Higher Education, the General Assembly, and all other individuals and groups who are in a position to take positive action in providing capital outlay funds from the General Funds of the Commonwealth for the construction of the new building and providing adequate M&O funds for the staffing and collections of the law library, at the 1976 General Assembly.

The Marshall-Wythe School of Law, as an institution of long-standing reputation in service to the citizens of Virginia and the legal profession, is in grave jeopardy unless the State Council of Higher Education, the 1976 General Assembly and the Governor consider that a crisis continues to exist and take emergency action to provide capital outlay funds for construction of the new Law School building and maintenance and operating funds sufficient to allow the law library to meet standards of the American Bar Association. Such action will mean that the Law School will meet its obligations to the American Bar Association and its commitment to legal education in the Commonwealth.

September 20, 1975

Faculty/Staff News

MARSHALL-WYTHE SCHOOL OF LAW

William F. Swindler, John Marshall Professor of Law, is the author of a recently published article, "Politics as Law: The Cherokee Cases," appearing in the current issue of the *American Indian Law Review*.

Swindler has also been named a member of the national advisory committee for the American Bar Association's Model Procurement Code Project. This project seeks to draft constitutional guidelines to guard against waste and corruption in purchasing of goods and services by state and local governments.

Doug Rendleman, associate professor, is the author of "Beyond Contempt: Obligors to Injunctions," published in the current issue of the *Texas Law Review*.

MODERN LANGUAGES

Vickie Babenko, assistant professor, has been invited to submit her biographical data for inclusion in the third edition of *World Who's Who of Women*, to be published by Melrose Press Ltd., Cambridge, Great Britain. The publication includes biographical information about outstanding women throughout the world.

PHYSICS

Assistant Professor G. Vahala presented a talk on "Stability of the Bumpy Theta Pinch" at the third topical conference on pulsed high beta plasmas held at the UKAEA Culham Laboratory in England, Sept. 9-12. Grad-

'Occasion' Offers Arts Seminar

An Occasion for the Arts, Inc., will hold its first art seminar Saturday, Oct. 4, from 1 to 5 p.m. in Andrews Auditorium.

Entitled "A Happy Medium", the program will feature five speakers: Maxine Brown, craftsmen of Chelsea Court; Robert Gray, director, Southern Highlands Guild; Van Hawkins, art editor, Times Herald; Jean Nickolic, Fredericksburg Gallery of Modern Art; H. Morton Whitman, W&M campus minister. Each speaker will present his views on communication barriers which exist between the five areas. Each speaker will also discuss the methods and techniques of solutions to problems which are encountered in his profession.

Registration to the seminar is free, but limited to 250 persons. Anyone interested should register as soon as possible by writing to: Occasion Seminar, Box 363, Williamsburg, Virginia 23185.

uate students **T. Cayton** and **M. Schmidt** participated in the research for this paper. The travel was supported by an NSF International Travel Grant.

The following paper has been published:

"Lepton Conservation in the Double Beta Decay of ^{82}Se ," by **B.T. Cleveland**, **W.R. Leo**, **C.S. Wu**, **L.R. Kasday**, **A.M. Rushton**, **P.J. Gollon**, and **J.D. Ullman** in *Phys. Rev. Letters* 35, 757 (1975).

SCHOOL OF BUSINESS ADMINISTRATION

At the meeting of the National Academy of Management in New Orleans, Aug. 11-13, Associate Professor **William H. Warren** delivered a paper entitled "A Multi-Media Approach to Teaching Business Policy." The paper will also be published in the proceedings.

On Sept. 16 he discussed "The Construction Site Bill-Congressional Squeeze Play" before the Subcontractors Association of Virginia, Inc., in Norfolk. He also spoke on "The Construction Site Bill-Death Knell for Minority Contractors and Skilled Black Con-

SCHEV Official To Discuss Faculty Tenure

Gordon Davies, associate director of the State Council of Higher Education, will discuss the faculty tenure and work load study being organized under his direction at the Oct. 6 meeting of the William and Mary AAUP chapter.

Monday's meeting will be held in the Alumni House. Sherry will be served at 7:30 p.m. and the business meeting will begin at 8 p.m.

Members of all faculties and the administration are invited to attend.

struction Workers" at a Sept. 26 meeting of the National Association of Minority Contractors in Washington, D.C.

James E. Smith, associate professor, presented a paper entitled "Divisive Reorganizations and Partial Liquidation" at the Old Dominion University Annual Tax Conference in Virginia Beach, Sept. 19.

SCHOOL OF EDUCATION

Kevin Geoffroy, associate professor, attended a two-day meeting in Washington of the Board of Journal Editors sponsored by the American Personnel and Guidance Association. Geoffroy represented Division 11, the Association for Specialists in Group Work.

Mrs. Graves To Welcome Newcomers

Mrs. Thomas A. Graves Jr., will be hostess Tuesday, Oct. 7, from 8 to 10 p.m., for a Dessert Party at the President's House, welcoming women new to the College community.

Members of the College Women's Club Board of Directors will also be on hand to greet newcomers.

Those planning to attend should note that the date of the party has been changed from Oct. 14 to Oct. 7.

Development

National Endowment for the Humanities - Fellowships in Residence for College Teachers

These fellowships are designed for teachers in "smaller private and state colleges," and emphasize the improvement of knowledge and understanding of academic subjects in order to improve teaching. Two activities are involved: participation in an academic year seminar and pursuit of an individual program of study and research.

Stipends for 9 months: \$14,500. Postmark deadline for request of application materials and descriptions of seminars is Oct. 14. Contact: Karen Fuglie, Division of Fellowships, NEH, 806 15th St., N.W., Washington, D.C. 20506. Tel.: (202) 382-5827.



Katherine Wallace

Katherine Wallace Retires

Katherine R. Wallace - is retiring from the College staff today after 23 years as a custodian in Jefferson Hall.

Nearly a quarter of a century has not daunted her enthusiasm for the students she has met and the work she has done in Jefferson. "I just love it," she said.

Thus far, Mrs. Wallace has no special plans for her retirement and will simply "take each day as it comes," she said.

A native of Williamsburg, Mrs. Wallace worked at Eastern State Hospital for many years before joining the College staff.

In her free time she enjoys sewing and upholstering furniture.

The Wallaces have two sons, Oscar and Ernest, living in Williamsburg, as well as two grandchildren and one great grandchild.

Mrs. Wallace is a member of Oak Grove Baptist Church.

Lecture Set On Medieval Village

Maurice W. Beresford, James Pinckney Harrison Visiting Professor of History, will give an illustrated lecture tomorrow at 7:30 p.m. in Andrews Hall auditorium.

Part of the Project Plus Forum, Beresford's lecture concerns the "Fabric of the Medieval Village."

The Forum this year is exploring the theme of medieval and renaissance man, and the public is invited to attend the lectures.

Professor Beresford graduated from Cambridge University with First Class Honors in 1941. He joined the faculty of the School of Economic Studies at the University of Leeds in 1948, where he has been professor of economics since 1959.

Beresford is an authority on medieval archaeology as well as economic history. His several books on the subject of aerial photography for studying archaeological sites include "The Lost Villages of England," "History on the Ground," and "Medieval England: An Aerial Survey."

Continued from First Page

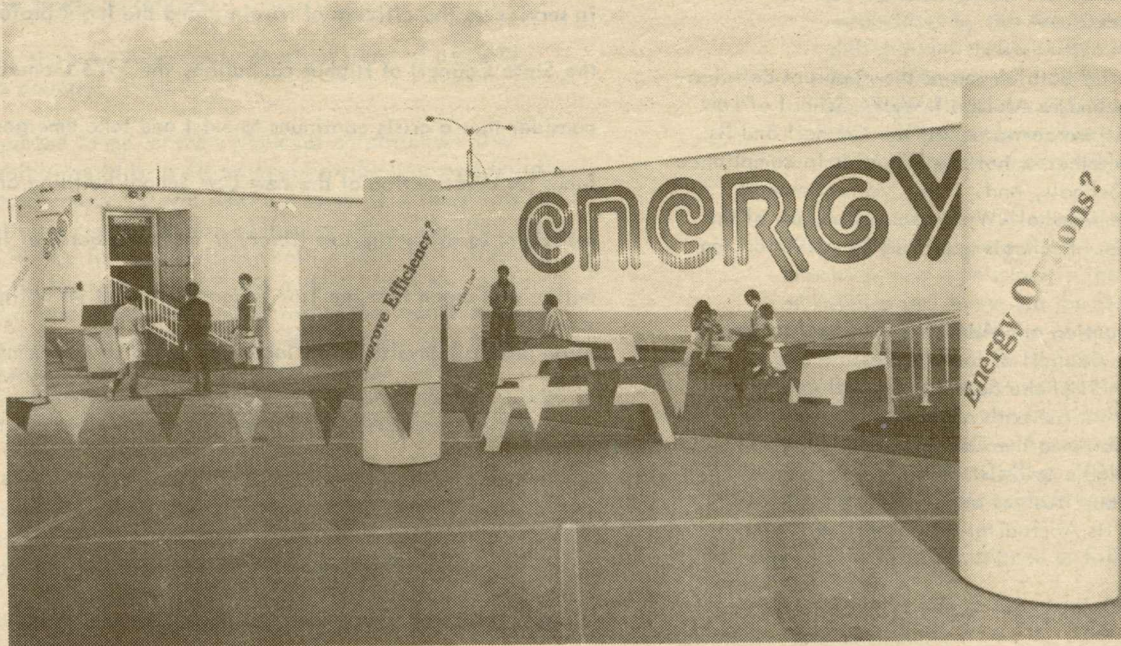
LAW SCHOOL

increased state support "from a marginal level to one which will enable it to maintain its reputation as a strong law school of national stature," with particular emphasis on a new building.

In 1974 the General Assembly appropriated planning funds of \$218,750 for the proposed new building. Although these plans were completed by the time of the 1975 session, the legislature failed to provide construction funds for the facility. The College has made the capital outlay request of \$5,592,050 its top priority in the budget request to the 1976 session.

The critical situation in physical plant was also top priority among the concerns included in the ABA report. Dr. Graves in his statement advised the Board that "all possible steps are being taken within the College and the law school" to provide satisfactory response to these matters, which cover salary scales, the professional staffing for the law library, and law library acquisition funds.

But the building question, which is largely out of the College's control, is the crucial matter, Graves' statement stressed. "Continued lack of positive action on the matter is threatening the future of the oldest professional law program in America," he said. The William and Mary president added that it is also making it "difficult to attract an eminently qualified person" as the new dean, and that the decision of the National Center for State Courts to locate its headquarters in Williamsburg was "based on the assumption that the new building for the law school would be adjacent to its headquarters."



"Energy" a major educational exhibit of the U.S. Energy Research and Development Administration (ERDA), will be at the Williamsburg Shopping Center on Richmond Road through Oct. 5. "Energy" is operated for ERDA by the Oak Ridge Associated Universities, a non-profit educational and research organization of 42 southern colleges and universities including William and Mary.

Official Memorandum

To: The College Community

From: William J. Carter, Vice President for Business Affairs

Subject: Clarification of Cary Field Lighting Proposal

The September 23 issue of the *William & Mary News* published the Report on Buildings and Grounds which had been presented to the Board of Visitors' meeting of September 19-20 by the Vice President for Business Affairs.

This statement on the Cary Field Lighting Proposal was made in that Report: "A study has been made of lighting for Cary Field and cost estimates prepared. The feasibility of capital funds of more than \$100,000 being provided by the Williamsburg-James City County School Board is now under study."

My intent in this brief two-line report was to inform the Board of Visitors, as I had done at the May meeting, that the feasibility of providing capital funds was under study by the *School Board rather than by the College.*

To clarify further the position of the College on this matter, it would be helpful to quote from my letter of May 20, 1975 to Professor R. Wayne Kernodle. This was the last statement by the Administration of the College on this matter, and we have no reason to believe that a proposal will be forthcoming.

Professor R. Wayne Kernodle, Chairman
Committee on Facilities, Policy and Scheduling
College of William and Mary
May 20 1975

SUBJECT: Lighting of Cary Field

Dear Wayne:

I am writing to assure you that the feasibility study on lighting Cary Field has not progressed beyond the most preliminary stages, despite all the coverage and discussion by local newspapers and interested parties to this proposed project. Any assumptions made by the advocates of this proposal are completely without foundation as far as the College is concerned.

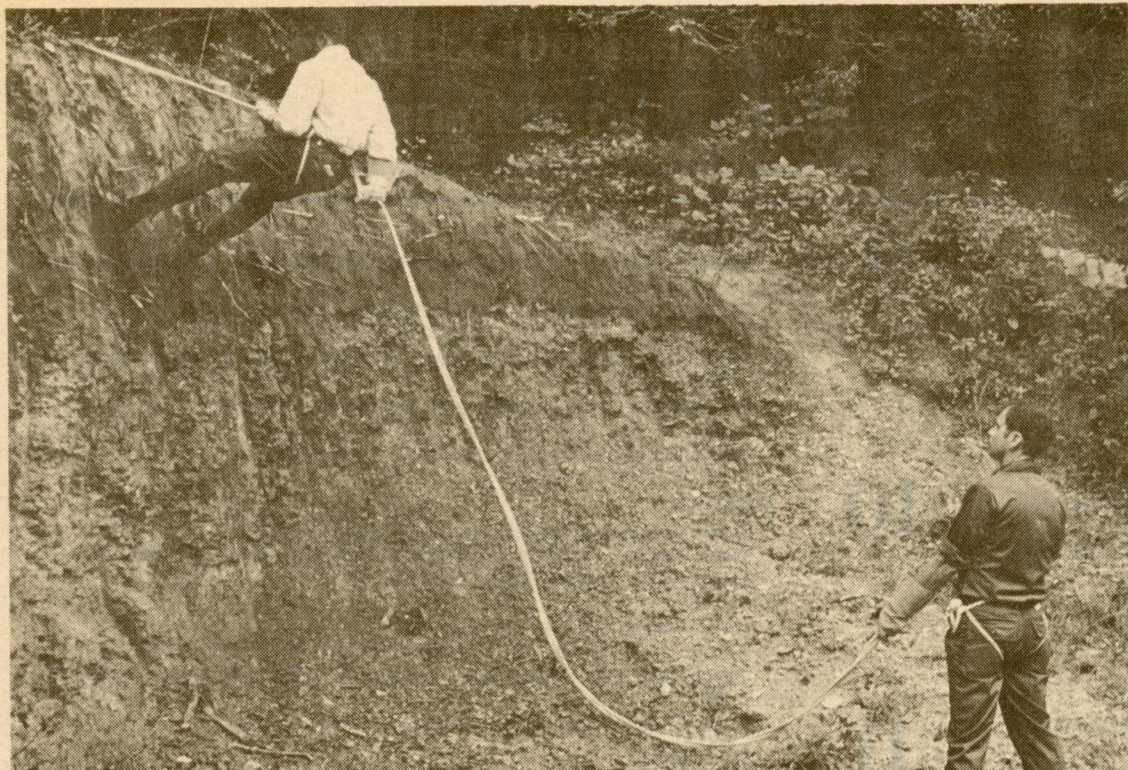
The major initial capital outlay, the high operating costs, the environmental impact and student concerns continue to be major obstacles which have not yet been sufficiently considered or quantified. Only cursory consideration of these major subjects has been given in very preliminary discussions with Gil Granger and Ben Carnevale. It appears now that these obstacles will be insurmountable.

Let me assure you that no commitments have been made and, as far as the College is concerned, all discussions are at a standstill and will not be resumed until we receive in writing a proposal from the School Board that the feasibility study proceed, based on the level of financial support which appears possible. When that formal proposal is received, we will meet with your committee to make certain that all aspects of the proposal are thoroughly considered...

Sincerely,
William J. Carter
Vice President for Business Affairs

cc: President Graves
Vice President Healy
Mr. Ben Carnevale
Professor John Donaldson
Mr. Gilbert L. Granger
Dr. Henry a Renz,
School Superintendent
Mayor Vernon M. Geddy, Jr.

Clearly the question of the availability of capital funds from the School Boards is but one of the major priority factors. Equally important, and perhaps insurmountable, are the questions of environmental impact, long-term maintenance costs involving the State and College, and the concerns of students and other members of the College Community.



Sam Eure, a freshman from Springfield, rappels down a bank near Lake Matoaka under the supervision of Assistant Professor of Military Science, Major Herman Schmidt. About 35 students, including women cadets, participated in the exercise last week as part of a class on mountaineering techniques being taught to freshmen and sophomore Army ROTC cadets.

Courses Offered for Non-Credit

Starting dates are nearing for a number of non-credit courses being offered this fall by the College's Office of Special Programs.

Jerry C. Smith, assistant professor of modern languages at the College, will teach a course in basic conversational German, beginning Sept. 30. The 12-week course employs an innovative approach to learning conversational German through the use of a film series developed under the auspices of the German government. Participants will meet on the Williamsburg campus Tuesdays from 8-10 p.m.

An eight-week short course on mental health rehabilitation counseling taught by Peter Nickerson, director of the Williamsburg Social Service Bureau, begins Oct. 1. Classes meet Wednesdays, from 7:30-10 p.m., at the Virginia Associated Research Campus in Newport News.

Another eight week course reviewing the fundamentals of traditional English grammar and principles of writing will be offered Wednesdays, 7-9:30 p.m., in Newport News, beginning Oct. 1.

Other non-credit courses that will be starting soon include Plant Appreciation, Oct. 4; Techniques of Self Defense for Men and Women, Oct. 4; Basic Field Archaeology, Oct. 4;

Upper Level Yoga for Men and Women, Oct. 6; Estate Planning Seminar: Making the Most of your Assets, Oct. 6; Taxation and Business Decisions, Oct. 7; and Psychology for Daily Living, Oct. 7.

Continuing Education Units will be awarded for successful completion of these courses.

Colonial Dancing Classes Set

Classes in 18th century dancing will be held in the Dodge Room of Phi Beta Kappa Hall, beginning Monday, Oct. 6 at 8 p.m.

Sponsored by the Williamsburg-James City County Bicentennial Committee, the series of ten classes is being offered to students at a special rate, \$5, and to others for \$17.50 per couple, \$10 individual.

To register, send a check to Bicentennial Dances, in care of I.H. Robitshek, treasurer, at 1329-A Mt. Vernon Avenue. Those interested may also register at 7:30 p.m. in the Dodge Room before the first class.

For further information, call Mrs. Daw, 229-0720, or Mrs. Gail Ticknor, 229-7588.

Detailed information on these and other courses may be obtained from the Office of Special Programs, phone 877 9231, Ext. 200.

Cypress Creek Featured In Audubon Film

The Biology Club will sponsor a series of five Audubon Wildlife film programs this year, beginning Oct. 8 with "Florida Cypress Sanctuary: Fisheating Creek."

Narrated by Richard Kern of the National Audubon Society staff, the film will be shown in the Campus Center Ballroom at 7:45 p.m.

Subsequent programs will deal with the Everglades, Rio Grande, Newfoundland and New Guinea.

Season and individual admission tickets may be purchased at the door prior to the film showings, or by writing to Audubon Wildlife Films in care of the biology department at the College.

Personnel Bulletin

The following positions at the College are or will be vacant. Those denoted with an asterisk (*) are available to any qualified individual. The remainder are open only to permanent classified employees or faculty of the College. To apply, contact the Personnel Office, James Blair Hall, Room 201. The College of William and Mary is an equal opportunity employer. Accordingly, women and minority employees are encouraged to apply for those positions for which they feel they are qualified.

Inquiries about vacancies should be directed to the Personnel Office and not to the department where the opening exists.

Call 229-JOBS (229-5627) for an updated listing of job vacancies and 24-hour service.

*CLERK TYPIST C: W&M Hall, \$5,880, deadline Oct. 3

*GEOLOGY LIBRARIAN: \$2.50 per hour, 20 hours per week, deadline Oct. 4

FOR SALE

Magic Chef electric range. Harvest gold. 36" wide, almost new. Original price-\$369; sacrifice for \$150. Also, harvest gold washing machine. 18 lbs. capacity. Signature brand. 1 yr. old. Heavy-duty, many cycles. \$150. Call 229-9894. (9/30)

Yashica Super 40-Super 8 movie camera with case. \$70. Keystone custom 702 Super 8 movie projector. \$70. Baia Ed-viewer Mark II. \$30, or all three items for \$150. 229-9894. (9/30)

1971 Mercury Cougar. Power, Air, low mileage, recently inspected. \$1850. Call 229-2332 after 5. (10/7)

Modestly priced component stereo system: Lafayette #25 amplifier, 2 Minuet speakers, Lafayette pre-amp and BSR 310 turntable. \$125. Call 229-9319. (10/7)

1971 TR Spitfire. Red conv., over-drive. Excellent condition. \$1350. Call 229-0772. (9/30)

1970, 12'x54' two BR mobile home. \$4,000. Avail. in Nov. Call 229-3086, early morning or late evening. (10/14)

'72 Jeep Wagoneer. 4 wheel drive, 360 engine, power steering and brakes, heavy-duty equipment. \$2300. 229-3325 (10/14).

Early Am. maple family room furniture, recently recovered: sofa, rocker, tables, lamps, desk, chair. Good condition. Large stuffed chair-\$10; Sears safety car seat-\$15; '66 Porsche 911, some rust, needs oil line-\$2000. 229-7660. (10/14).

FOR RENT

3 BR mobile home near campus. \$160/mo. Please call 1-353-2609 evenings and weekends. (9/30)

WANTED

Want to be close to campus this winter? Roommate needed at King and Queen Motel. \$92.50 pays everything! Furnished, wall-to-wall carpet, 3 beds, A/C. Contact Peter Berinato, Apt. 17. If not in, please leave message. No phone. (10/14)

1963-67 VW convertible in good condition. Call 229-4510. (10/14)

LOST

Light-brown suede jacket lost in Commons. \$5 reward. Call Chris at Ext. 208 (Cam 239). (10/14)

OCTOBER CALENDAR

Events of interest to the College community are listed as scheduled on the Campus Calendar, Campus Center, Ext. 557.

1

WEDNESDAY

President's Advisory Council, Swem G-1, 10:30 a.m.
Residence Hall Life Advisors Lunch, CC Gold Room, 12 noon.
Wednesday Lunch Group, CC Room C, 12 noon.
Tidewater Superintendents Mtg., CC Theatre, 1:30 p.m.
Coffee Hour, French House, 3:30 p.m.
Delta Phi Alpha Pledging, Wren Chapel, 6 p.m.
Kappa Delta Sorority Pledging, Wren Great Hall, 6:30 p.m.
W&M Bridge Club, CC Rooms A and B, 7 p.m.
Circle K, Circle K Cottage on Boundary Street, 7 p.m.
Project PLUS Forum presents Maurice W. Beresford: "The Fabric of the Medieval Village," Andrews Auditorium, 8 p.m.
Film for History 101 students: "The Virgin Spring," Millington Auditorium, 8 p.m.
"Harvest," Hoi Polloi, 8:30 p.m.

2

THURSDAY

Third Annual SA Art Exhibit and Print Sale, CC, 9a.m.-7p.m.
BSO Sickle Cell Anemia Tests, CC Ballroom, all day.
Math Film Series: "Applications of the Marriage Theorem," Gian-Carlo Rota, Botetourt Theatre, 2:30 p.m.
Women's Field Hockey: W&M vs. Longwood, Martha Barksdale Field, 3:30 p.m.
Episcopal Holy Communion, Wren Chapel, 5 p.m.
Marshall-Wythe Law Wives, CC Theatre, 7 p.m.
Athletic Policy Committee, Morton 237, 7 p.m.
Fellowship of Christian Athletes, CC Gold Room, 7:30 p.m.
W&M Theatre Performance: "Godspell," PBK, 8:15 p.m.
"Harvest," Hoi Polloi, 8:30 p.m.

3

FRIDAY

Third Annual SA Art Exhibit and Print Sale, CC, 9a.m.-7p.m.
Endowment Assoc. Meetings, Swem Library, all day.
Dept. of Sociology Picnic, Matoaka Shelter, 3 p.m.
Faculty Club Cocktail Party, Alumni House, 5:30 p.m.
WMCF, CC Theatre, 6 p.m.
Hillel, Temple Beth El, 7:30 p.m.
SA Films: "Ladies and Gentlemen," W&M Hall, 7:30 p.m.; "Pink Floyd," 9:30 p.m.
"Cadillac," Hoi Polloi, 8:30 p.m.

4

SATURDAY

Endowment Assoc. Meetings, Swem Library, all day.
Dept. of History and School of Education Conference on "The Revolution in American History," CC, all day.
CPA Preparation Program, Jones 302, 8 a.m. - 5 p.m.
Circle K Tutoring Program, Washington Hall, 9 a.m.
College Women's Club Swim Lessons, Adair Pool, 9:30 a.m.
Circle K Swim Program, Blow Pool, 10 a.m.
Organ Recital, Wren Chapel, 11 a.m.
Women's Field Hockey: W&M vs. Richmond Club, Martha Barksdale Field, 11 a.m.
An Occasion for the Arts Seminar: "A Happy Medium," Andrews Auditorium, 1 p.m.
Men's Soccer: W&M vs. VMI, Intramural Field, 2 p.m.
S.B.A. Picnic, Matoaka Shelter, 4 p.m.
Law School Reception for American Bar Association, Wren Great Hall, 5:30 p.m.
Current World Affairs Seminar: George Grayson, "Portugal-Left or Right?," International Cottage, Boundary St., 7 p.m.
Language Houses Film Series: Ingmar Bergman's "The Magician," German House Lobby, 8 p.m.
W&M Theatre Performance: "Godspell," PBK, 8:15 p.m.
SA "Oktoberfest" Party, W&M Hall, 9 p.m. (admission \$1 with student I.D.)

5

SUNDAY

Project Plus "Medieval Jousting Tournament," Yates Field, 1 p.m.
An Occasion for the Arts, CC Ballroom, 12 noon-4 p.m.
Phi Mu Alpha Pledging, Wren Great Hall, 4:30 p.m.
Baptist Student Union Dinner and Program, 244 S. Boundary, 5 p.m.
Wesley Foundation Dinner and Program, 526 Jamestown Road, 5:30 p.m.
SA Film: "Smiles of a Summer Night," Millington Auditorium, 7:30 p.m.

6

MONDAY

Science Fiction Club, CC Rooms A and B, 7 p.m.
18th Century Dance Instruction, PBK Dodge Room, 8 p.m. (Special student rate - 10 lessons for \$5.)

7

TUESDAY

Residence Hall Life Mtg., with Area Coordinators, CC Gold Room, 9:30 a.m.
Coffee Hour, French House, 3:30 p.m.
Physics Dept. Ascent of Man Film: "Music of the Spheres," Millington Auditorium, 5 and 8 p.m.
SA Senate, CC Theatre, 7 p.m.
Catholic Mass, Wren Chapel, 7 p.m.
Women's Equality Group, CC Rooms A and B, 7:30 p.m.
College Women's Club Newcomers Dessert Party, President's House, 8 p.m.
Piano Recital by Meade Crane, CC Ballroom, 8:15 p.m.

8

WEDNESDAY

Wednesday Lunch Group, CC Room C, 12 noon.
Residence Hall Life Advisors Lunch, CC Gold Room, 12 noon.
Panhellenic Council Mtg., CC Room C, 6:45 p.m.
W&M Bridge Club, CC Rooms A and B, 7 p.m.
Chemistry Club, Chem. Bldg., Room 109, 7:30 p.m.
Project PLUS Forum Presents Thomas M. Finn: "The Medieval University," Wren Great Hall, 7:30 p.m.
Audubon Wildlife Film: "Florida's Cypress Sanctuary: Fish-Eating Creek," CC Ballroom, 7:45 p.m.
Modern Languages Dept. Lecturer Germaine Bree: "Status of Women as Writers," Millington Auditorium, 8 p.m.
"Church," Hoi Polloi, 8:30 p.m.

9

THURSDAY

Steering Committee of Eastern Shore Mental Health Project, CC Rooms A and B, 10 a.m.-4 p.m.
Women's Golf: W&M vs. Madison, Kingsmill course, 1 p.m.
Episcopal Holy Communion, Wren Chapel, 5 p.m.
Order of the White Jacket Reception, CC Rooms A and B, 6 p.m.; dinner, CC Ballroom, 7 p.m.
Fellowship of Christian Athletes, CC Gold Room, 7:30 p.m.
Visiting Scholar: Myron Lieberman, CC Theatre, 8 p.m.
W&M Theatre Performance: "Godspell," PBK, 8:15 p.m.
"Church," Hoi Polloi, 8:30 p.m.

10

FRIDAY

School of Education Faculty Mtg., CC Room C, 1 p.m.
Men's Soccer: W&M vs. Alumni, Intramural Field (or JBT), 3 p.m.
Sunset Parade, Sunken Garden, 5 p.m.
WMCF, CC Theatre, 6 p.m.
Hillel, Temple Beth El, 7:30 p.m.
English Dept. Social for Victorian Institute, Wren Great Hall, 7:30 p.m.
David Crosby and Graham Nash in concert at W&M Hall, 8 p.m. (Tickets: \$6, \$5)
W&M Theatre Performance: "Godspell," PBK, 8:15 p.m.

11

SATURDAY

Homecoming.
English Dept. Victorian Institute, Swem Library, all day.
Law School Admission Test, Millington Auditorium, 8 a.m.-5 p.m.
CPA Preparation Program, Jones 302, 8 a.m.-5 p.m.
Graduate Studies Foreign Language Test, Rogers 100, 9 a.m.-1 p.m.
Circle K Tutoring Program, Washington Hall, 9 a.m.
College Women's Club Swim Lessons, Adair Pool, 9:30 a.m.
Circle K Swim Program, Blow Pool, 10 a.m.
Quadrangular Cross-Country Meet, W&M, U. of Richmond, Richmond Track and Field Club, Peninsula Track Club, Dunbar course behind Eastern State, 11 a.m.
Law School Association Luncheon, CC Ballroom, 12 noon; reception following game.
Football: W&M vs. Ohio U., Cary Field, 2 p.m.
English Dept. Conference, Small 113, 2 p.m.
Current World Affairs Seminar: Gerald Johnson, "Energy and World Crisis," International Cottage, Boundary St., 7 p.m.
Language House Film Series: Leni Riefenstahl's "Triumph of the Will," German House Lobby, 8 p.m.
SA Senior Class Dance, W&M Hall, 8 p.m.
W&M Theatre Performance: "Godspell," PBK, 8:15 p.m.
BSO Dance, CC Ballroom, 9 p.m.
Sigma Pi Dance, CC Theatre, 9 p.m. (by invitation only)

12

SUNDAY

Sunday Series: Richard Burnett, fortepiano, and Alan Hacker, clarinet, CC Ballroom, 4 p.m.
SA Films: "The Great Gatsby," Millington Auditorium, 7:30 p.m.; "It Happened One Night," 9:30 p.m.
Royal Shakespeare Company Performance: "Hollow Crown," PBK, 8:15 p.m.

13

MONDAY

Placement Office Federal Career Seminar, CC Theatre, 2 p.m.
Men's Soccer: W&M vs. Randolph Macon, Intramural Field, 3 p.m.
Undergraduate Program Committee Mtg., Swem Conference Room, 3:30 p.m.
Phi Mu Alpha Pledge Mtg., PBK Dodge Room, 7 p.m.
Science Fiction Club, CC Rooms A and B, 7 p.m.
18th Century Dance Instruction, PBK Dodge Room, 8 p.m.

14

TUESDAY

Residence Hall Life Mtg. with Area Coordinators, CC Gold Room, 9:30 a.m.
Special Education Conference, PBK Dodge Room, 3:30 p.m.
Women's Tennis: W&M vs. Mary Baldwin, Adair Courts, 3:30 p.m.
Physics Dept. Ascent of Man Film: "The Starry Messenger," Millington Auditorium, 5 and 8 p.m.
SA Senate, CC Theatre, 7 p.m.
Catholic Mass, Wren Chapel, 7 p.m.

Campus Exhibitions

Andrews Gallery

GOYA'S LOS DESASTRES DE LA GUERRA--Sept. 27-Oct. 15. (Hours, 10 a.m. - 4 p.m., Monday through Friday.) Forty etchings from a series of eighty, recently purchased by the Virginia Museum for its permanent collection. The series is one of Goya's most famous and is one of the most outspoken protests by an artist against the inhumanity of war.

Botetourt Museum

WILLIAM MORRIS EXHIBIT--Oct. 1-Dec. 1. (Hours, 8 a.m. - 5 p.m., Monday through Friday; 9 a.m. - 1 p.m. Saturday.) Books, manuscripts and artifacts of William Morris, poet, artist, printer and socialist. The display is being held in conjunction with the meeting of the Victorian Institute in Williamsburg, Oct. 11.

Botetourt Gallery

A BICENTENNIAL TRIBUTE by Oscar de Mejo--exhibit ends Oct. 31. (Hours, same as Botetourt Museum.) Series of 12 "naive" paintings depicting various events in America's war for independence. On loan from the Interpublic Group of Companies of New York.