



William and Mary News

Volume V, No. 11
Tuesday, November 16, 1976

In the News

Anyone for an excursion to Africa? There exists a program that offers students a chance to spend next summer working for Operation Crossroad Africa, and to live and work among the African people. Last summer two William and Mary students went to Africa under the program, Julia Mills and Steven Banker, and came back saying the trip was quite an experience.

Maria Fonseca, director of recruitment for Operation Crossroad Africa, will be the guest at a special program for interested students Tuesday, Nov. 16, at 4:30 and 7:30 p.m. in the Sit 'n Bull Room at the Campus Center. The informational program will include a series of color slides.

Books of many shapes and forms--paperbacks, hard covers, novels, poems, short stories, dictionaries and literature textbooks--are on the "most wanted" list under a book drive sponsored by the Committee on Special Programs.

The recreational books will be donated to Eastern State Hospital's adolescent ward, says Dean Carolyn Moseley, whose office is directing the project. Collection points have been established at the Campus Center, Swem Library, Campus Post Office and Dean Moseley's office, and if you have too many books to carry, she'll even provide transportation. The first collection of books will take place before Thanksgiving, and the Student Association Book Fair, the College Bookstore and Swem Library have already promised to make donations.

Students need not feel they should donate their cherished textbooks and research materials, however, either before or after exams. Eastern State officials say that these types of materials are not needed.

Foreign Study Program Expands

College Goes 'International'

The College has quietly and without much fanfare been going "international," and with great success.

Study abroad is attracting more and more students, and next year travel-study opportunities will be available in the British Isles, Europe and East Asia.

In 1959 the Drapers' Exchange Scholarship, one of the major study abroad programs, was established by the College and the Drapers' Company of London. There was only one other opportunity for foreign study at that time, at the University of Exeter in England. Today there are more than ten options, and plans are being made to expand existing ones and add another.

Former President Alvin Duke Chandler has been credited with the establishment of the Drapers' Program which offers William and Mary graduates two years of study at a British University of their choice. Alive, well and thriving today, the Drapers' Program is building an impressive roster of alumni who have done well in their careers and recall their study abroad with satisfaction and affection.

A recent poll of Drapers' scholars indicated that almost without exception they were well satisfied with their years abroad and would not want to change them if they had an opportunity to relive their experience.

"My background helped me

understand people better," said a former Scholar, now a New York insurance broker. The scholarship for one student, now a foreign service officer in the Department of State, provided him a "good back-

Continued on Page Two

College Announces Christmas Vacation

From: William J. Carter
Vice President for Business Affairs

To: The College Community

Subject: *Holiday Schedule*

Again this year the College will observe an extended Christmas-New Year's holiday period, from Friday, December 24, 1976 through Sunday, January 2, 1977, dates inclusive.

Administrative offices, the plant department (except for those employees required to maintain essential services), and the Campus Post Office will be closed during that period.

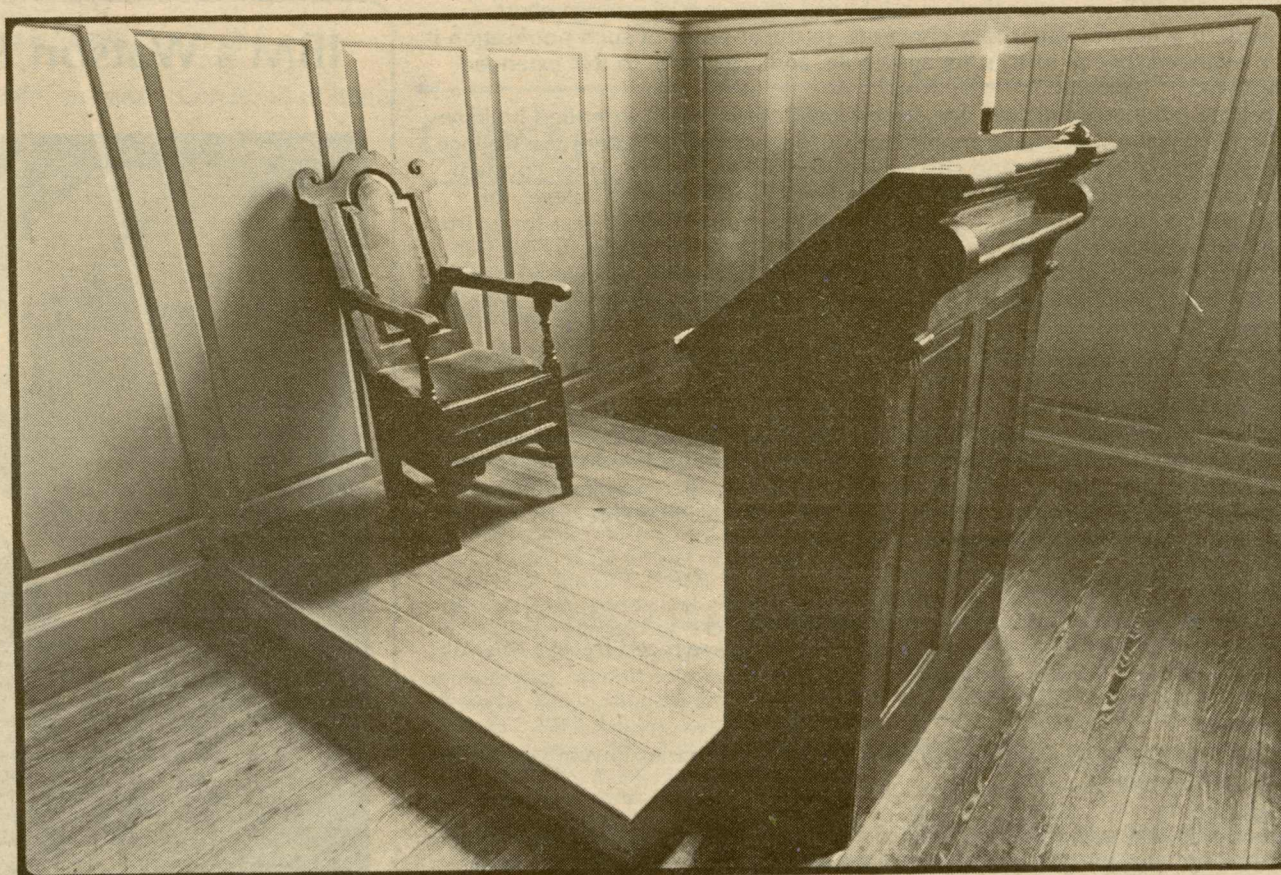
The Campus Police Department will maintain regular hours.

The College Switchboard will be closed *only* on Saturday and Sunday, December 25 and 26; regular switchboard hours will be maintained during the remainder of the holiday.

Emergency service may be obtained at *any time* by calling the regular College telephone number, 229-3000.

The names of permanent classified employees who are required to work during this holiday period should be reported in writing to the Personnel Office in order that they may be credited with compensatory leave. Permanent classified

Continued on Page Two



IN THE EIGHTEENTH CENTURY, this rather stark room in the Sir Christopher Wren Building was the scene of quite a lot of intense activity--and deep

thought. It was the "moral philosophy" classroom, where courses in rhetoric, logic and ethics were taught.

College Goes 'International'

Continued from Page One

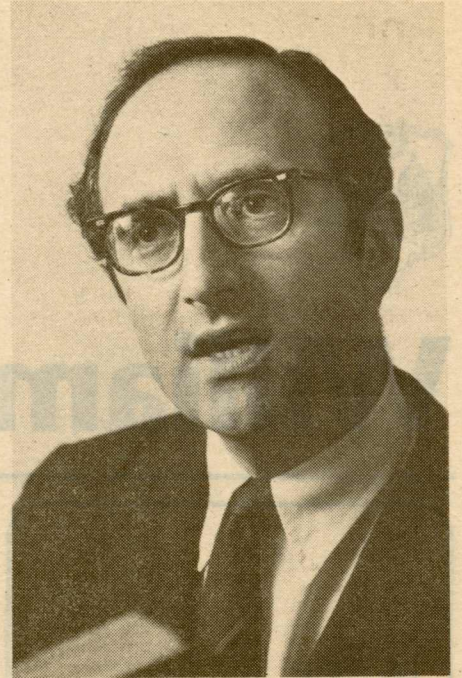
ground and credentials." Another student said it was "one of the most significant experiences of my life."

The response of students echoes the sentiments of James C. Livingston, dean of the Undergraduate

Program, who feels study abroad is important in terms of the goals of a liberal education by helping students broaden their perspective and not only see but experience how other people live.

Susan Deery, associate dean of

students in charge of study abroad programs, says students come back glad they went and characterizing their experience as worthwhile and exciting. Dean Deery finds students much more self sufficient, much more self confident when they return from study abroad. While heartily advocating foreign study, Deery cautions students that they will have to make many adjustments in their lifestyle while they are away. Most programs are geared to second semester sophomores or juniors who have completed their basic requirements and must return to spend their senior year on campus to fulfill graduation requirements.



Poet Martin Robbins

Robbins Reads Poetry at Swem

Dr. Martin Robbins will give a poetry reading, Thursday, November 19 at 4 p.m. in the Boteourt Theatre in Swem Library.

A westerner transplanted to New England, Martin Robbins has worked with words as a journalist, editor, teacher, writer and singer.

Now teaching at the Radcliffe Institute, he taught writing courses in journalism and science at Harvard College from 1973-76. He taught American poetry, in English and Spanish, at the National University of Buenos Aires, on a Senior Fulbright-Hays lectureship in Argentina during the return of Juan Peron.

He has published two books of poetry with the Swallow Press, "A Refrain of Roses" (Denver, 1965), and "A Reply the Headlines" (Chicago, 1970).

For the past two years, he has been working on the text for the Phi Beta Kappa Bicentennial Oratorio, "To Form a More Perfect Union, which will be performed at the College in December.

Thursday's reading, which is

sponsored by Phi Beta Kappa and the Committee on Lectures, will include some of the poetry written for the Oratorio, as well as some performance poems where words are both read and sung.



Former U.S. Senator from North Carolina Sam Ervin visited the Marshall-Wythe School of Law last Friday to talk to his friend from the Senate -- Dean William Spong -- and to Marshall-Wythe students.

Ervin, best known as the chairman of the Watergate Committee, was in Williamsburg to receive an award from Former Members of Congress.

College Announces X-mas Vacation

Continued from Page One

employees who are required to work on any of these days should take compensatory leave earned as soon thereafter as possible in order to avoid excessive leave accumulation. Hourly employees who work on any of these days will be paid at their regular hourly rates.

This holiday decision has been considered from many standpoints, since it is recognized that a few people might be inconvenienced by such a close-down over a continuous period.

Those individuals or groups who might be so inconvenienced by this extended holiday should direct their concerns to me, *IN WRITING*, no later than Friday, December 10, 1976, in order that we might make any special arrangements necessary to accommodate those concerns. In the absence of such notification it will be assumed that all offices are agreeable, and adaptable, to this extended close-down.

Employee morale constitutes one strong justification for an extended holiday. Another justification, of equal importance, is the fact that it enables the College to exercise effective energy and cost savings measures. We are under constant pressure on these points, and, with the students away from the College, this holiday period affords the best opportunity of the entire College year for a virtual close-down of most facilities.

Paychecks for permanent employees will be available at the normal location (Payroll Office, 2nd Floor, James Blair Hall) from 9:00 AM to 12:00 Noon only on Thursday, December 30.

Access to buildings during the holiday will be as follows:

- Student Residences**
No access after Wednesday, December 22, except to 216 Jamestown Road, 312 Jamestown Road, and Thiemes'. Heat will be reduced elsewhere to 60° on that date, to extend through Sunday, January 9, 1977. Separate instructions to Area Coordinators, Resident Tutors, and Resident Directors will be issued by the Office of Residence Hall Life.
- Offices**
Access at the discretion of the individual who occupies the office. However, after 5:00 PM on Friday, December 24, heat will be reduced to 60°; this will extend through Sunday, January 2.
- Libraries**
Access governed by hours established by the two libraries (Swem Library and the Law Library).

Actual savings last year from this holiday closing amounted to more than \$14,000. It is estimated conservatively that this year's schedule will produce savings in excess of \$30,000. The increase is primarily attributed to the tripling in the cost of electricity and the inflated cost of other utilities since last year. We are confident that, with your continued cooperation, such significant savings can be achieved without hardship or dislocation to our educational objective.

Employment

The following positions are open to all qualified individuals; however, current faculty and classified employees will receive first considerations.

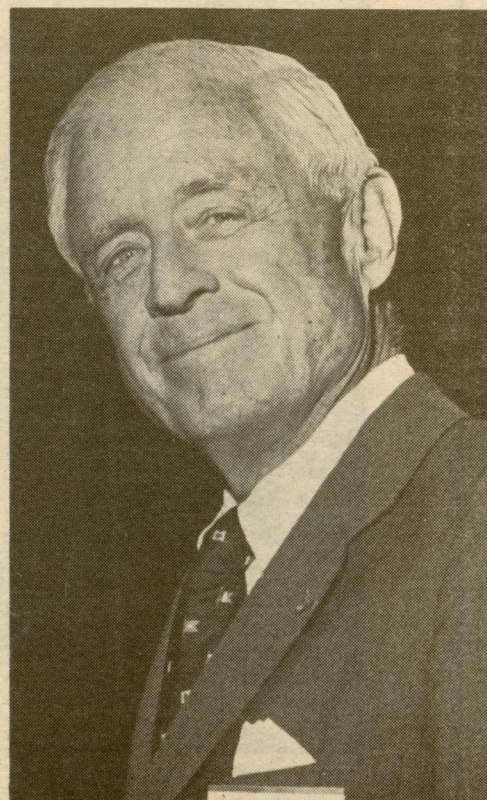
WELDER-MACHINIST

\$5.00 per hour and up, depending on experience. No State Benefits - Unclassified. William Small Physical Laboratory Machine and Instrument Shop. Deadline - November 19, 1976.

CLERK TYPIST C - \$6,432 per year. Law School Admissions Office. Deadline - November 21, 1976.

CLERK TYPIST - Half Time. \$3.23 per hour. No State Benefits - Unclassified. Office of Development. Deadline - November 20, 1976.

IBM's Watson Receives First Medallion



Thomas J. Watson, Jr., chairman of the Board of IBM, received the first Business School Medallion as the highlight of the school's third annual Sponsors' Day.

The award is made by the faculty of the School of Business Administration to recognize an individual whose distinguished career in management represents the highest standards of professional and integrity.

Watson, the son of the founder of IBM, was elected president of the company in 1952, chief executive officer in 1956, chairman of the board in 1961, and chairman of the executive committee in 1971.

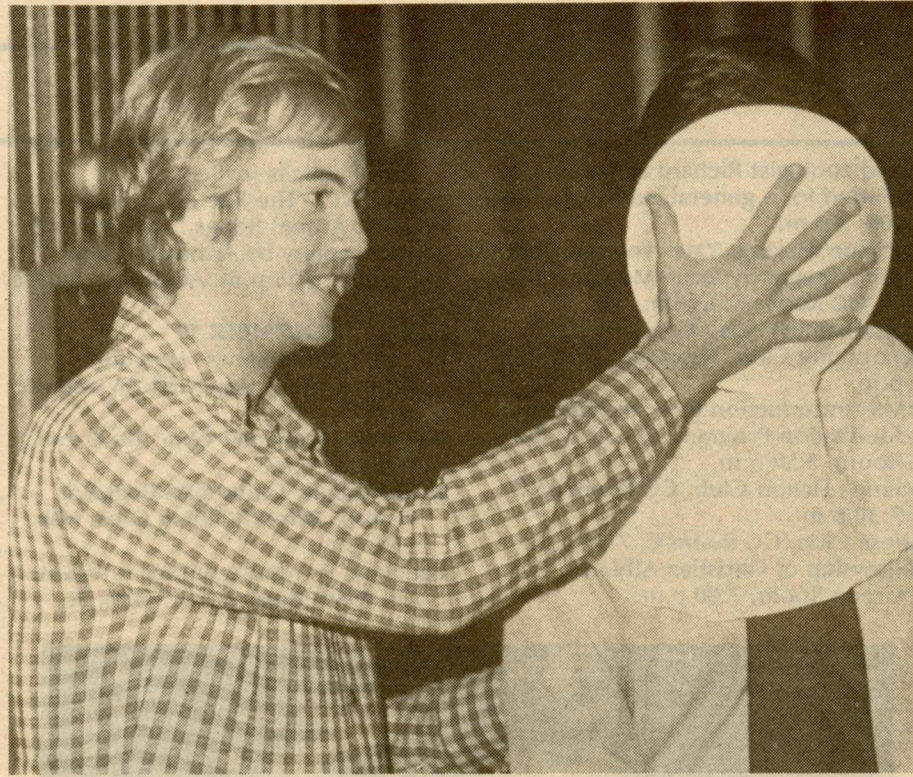
The award was made by Dean Charles L. Quittmeyer after welcoming remarks by President Graves. Quittmeyer said he expects the medallion presentation to become a regular part of the Sponsors' Day program.

Eminent Scholar To Present 'Fire of Love'

"The Fire of Love and Other Ardent Songs" is the unusual title of a "Concert with Commentary" to be presented by Arthur F. Schrader, visiting professor of music under the Eminent Scholar program. Schrader's program will begin in the Campus Center Little Theater, Thursday, Nov. 18, at 8:15 p.m.

The concert will range widely from the 17th to the 20th century, and from guitar transcriptions of old English lute songs to unaccompanied folksongs collected in modern times.

Since 1961, Schrader has directed the historical music program at Old Sturbridge Village in Massachusetts. There he is responsible for locating music that was actually performed in Federal New England farm villages from 1790 to 1840 and training performers to recreate the music in its authentic setting. In addition to articles on early music, Schrader has produced three scholarly recordings of early New England music and his own recording, with Folkways, of Revolutionary War topical songs taken from the original 18th century newspapers.



PIE A LA SMITH was Friday's main course in the Campus Center, where Ken Smith, associate dean of student activities, was "pie-killed" by members of Pi Kappa Alpha fraternity to raise money for muscular dystrophy.

Religious

BAPTIST - Smith Memorial Baptist Church provides bus transportation for students for Sunday School at

9:45 a.m., and worship services at 11 a.m. and 7:45 p.m. each Sunday. For information, call 229-2998.

CATHOLIC MASS, Tuesdays, Wren Chapel, 7 p.m.

CATHOLIC - Mass, Fridays, 7:15 a.m., on campus.

CATHOLIC MASS, Sunday 12 noon, Wren Chapel, Nov. 21.

Mass, Sundays, 5:30 p.m., St. Bede's Parish Center. Supper following, \$1.

Catholic Student Association Mass, Wren Chapel, 7 p.m., Nov. 23.

CHRISTIAN SCIENCE organization, Thursdays, Campus Center Green Room, 4:30 p.m.

EPISCOPAL HOLY Communion, Thursdays, Wren Chapel, 5:30 p.m.

EPISCOPAL - St. Martin's Episcopal Church provides transportation for students to attend the 10 a.m. Sunday services. Call 229-1100 weekdays.

EPISCOPAL - Candelit Evensong, Sundays, 5:30, at Bruton Parish Church.

Exhibits

Pugs, People and the Peter Chapin Collection. Pug figurines and graphics. Zollinger Museum, Swem Library. Gallery hours; 8 a.m.-5 p.m., Monday through Friday, and 9 a.m. - 1 p.m. on Saturday. October 20-December 1.

PAINTINGS by Sam Roussi, Gallery of Robert Andrews Hall. Nov. 1 through 19.

Richard Estes: Urban Landscapes, Robert Andrews Hall, upper foyer, Nov. 8 through Nov. 20.

Jean Dubuffet: Phenomenes, Robert Andrews Hall, lower foyer, Nov. 8 through Nov. 20.

WATERCOLORS by Douglas Denniston, Andrews Hall, Monday through Friday, 9 - 4 p.m. Oct. 27 - Nov. 24.

Published weekly by the Office of Information Services during the academic year, except when the College is in recess, and twice each month in June, July and August. Marjorie N. Healy, editor
Karen G. Detwiler, calendar
Karen Ross, classifieds
Publications Office, production

Thanksgiving Holiday

The administrative offices, the plant department (except for those employees required to maintain essential services), and the mail room will be closed on November 25 and 26, 1976. The Campus Police Department and the College Switchboard will maintain regular hours.

The names of permanent classified employees who are required to work on either day should be reported in writing to the Personnel Office in order that they may be credited with compensatory leave. Hourly employees who work on either of these days will be paid at their regular hourly rates.

Surplus Office Equipment Available

There exists surplus office equipment available for issue to any department having a need within the college community. All surplus items can be examined daily from 8 a.m. - 4 p.m., November 15-30, at Trinkle Hall.

Departments who would like to examine surplus property should contact Julius Green at the Plant Department, extension 303, 382 or 383.

All Surplus office equipment is issued on an "as is" basis.

Item No.	Item Description	Quantity on hand	Condition of Items
1.	Calculator, Remington, Electric	2 ea.	Poor
2.	Calculator, Smith Corona, Electric	1 ea.	Poor
3.	Calculator, Monroe, Electric	3 ea.	Poor
4.	Calculator, Olivetti, Electric	1 ea.	Fair
5.	Duplicator, Heyer Conqueror, Manual	1 ea.	Poor
6.	SRC Reading Accelerator, Electric	1 ea.	Poor
7.	Collator, Table Top-8, Electric	1 ea.	Fair
8.	Auto-Typist, American Automatic, less Typewriter	1 ea.	Fair
9.	Alphabetic Accounting Machine M.A.I. 402	1 ea.	Fair
10.	Electric Stencil Maker, A.B. Dick, Model 580	1 ea.	Poor
11.	Chair, high back, wood with arms	2 ea.	Fair
12.	Chair, molded plywood seat and back	25 ea.	Fair to good
13.	Dental chair	1 ea.	Fair
14.	Demonstration table, with built-in power pack	1 ea.	Fair

In addition, over 60 miscellaneous items of equipment and vehicles are listed on the latest surplus property sale notice from the State Department of Purchases and Supply. The sale is "as is and where is" without warranty. Bids will be opened November 23 at 2 p.m. Successful bidders will be required to remit within 10 calendar days and remove property within 20 calendar days from the day of notice of award.

The 1970 Virginia Conflict of Interest Act prohibits any employee, spouse or relatives residing in the employee's household, to purchase property belonging to the agency by which that person is employed.

A schedule of items on sale, including several from the College, as well as from Virginia Tech., the University of Virginia and the Department of State Police, is available in the Purchasing Office, the College News Office and the Plant Office.

Classifieds

FOR SALE

1972 3-SPEED green Duster with A-C. \$1590 or best offer. Call Ext. 541 days; or 1-353-2609 evenings and weekends. (11/16)

1970 CHEVROLET IMPALA. 4-door sedan, clean, good tires, A/C, power steering, one owner, \$975. Call 220-1757 or 229-2950 anytime. (11/16)

MINI-BIKE, \$125 (orig. \$239) used less than 2 mo., excellent cond., Sears 5 h.p. Craftsman engine. Call 229-3963. (11/23)

'67 MGB Hardtop, very good cond., engine & transmission have 50,000 miles, AM-FM cassette stereo, wire wheels, new steel radials, \$1250 or best offer; Call 220-2431 or 229-5171. (11/23)

BABY ITEMS, good cond. Hedstrom combination carriage/stroller, \$15; GM infant love seat, \$15; Cosco playpen, \$5; crib bumper pad, unused crib sheets and blankets. Also custom-made drapes, 324"x85", 100% Belgian linen, natural color, casement weave, \$85. Call 229-8005. (11/30)

TYPEWRITER, Royal manual office model, italic type, exc. cond., \$40. Call 220-0177 after 7 p.m. (11/30)

HIDE-A-BED, queen size, modern, off white, plaid throw pillows 4 mo. old, \$400 or best offer. Call 229-9721 after 5 p.m. or 229-2775 before 5 p.m. (11/30)

TIRES, two 40,000 mile Goodyear tires, DR 78-14, less than 4,000 mi. wear. Cost \$144 - sell for \$70 for the pair. 229-5555. (11/30)

RCA 18" B&W TV, good reception in Williamsburg on rabbit ears only, \$50. 229-7646 after 5 p.m. (11/30)

SANSUI 2000X receiver-amp, Sony TC-366 reel-to-reel deck, (2) Akai SW-125 speakers, Realistic turntable. Call 229-0591. (11/30)

BIKES, Sears Boy's 20" Spyder and Girl's 20" - \$25, boys excellent cond., \$15, girls good cond. Call 229-4817 after 5 p.m. weekdays, anytime weekends. (11/30)

WANTED

HOUSE TO RENT, two girls looking for a house close to campus. Can move in after Dec. 15. Call Vicki or Laurel 220-3789. (11/30)

LOST

GOLD CROSS PEN, engraved "Nancy C. Eiselt"; if found, please call Ext. 250. Thank you. (11/16)

WATCH, ladies gold Benrus w/light brown suede band. Lost in vicinity of Jones or Small Halls on Fri., Oct. 22. Sentimental value. If found, please call Judy Barnes, 229-4153. Reward! (11/16)

CAR COAT, men's tan corduroy. Call 229-8005. (11/30)

RING, York High School Class of 1976 ring. If found, please contact Meo Curtis at 229-3000, Ext. 259. (11/30)

Calendar

TUESDAY, NOVEMBER 16

Placement Interviews: Vanderbilt Graduate School of Management. By appointment.
 Graduates are invited to attend a career planning conference. Mr. Kelly McGuire of Sambo's Restaurants will discuss job opportunities at 7:30 p.m. at the Holiday Inn on Mercury Boulevard, Hampton. For a ride or information call Ext. 604, Placement Office.
 Chesapeake City Public Schools, 9 a.m. to 4:30 p.m. By appointment. Call Office of Educational Placement.
 BLOODMOBILE: 10 a.m. - 4 p.m., Williamsburg United Methodist Church, 514 Jamestown Rd. Sponsored by Gamma Phi Beta.
 S.A. Staff Meeting, CC Room D, 10:30 a.m.
 Ultimate Frisbee, Sunken Gardens, 1 p.m. Taught by Jamie Heath.
 Tour of the Greenhouse: 4 p.m. in Millington Greenhouse. Given by Professor Mathes.
 Interhall Meeting, CC Theatre, 4 p.m.
 Basketball (w) Adair Gym, 4:30 p.m.
 S.A. Senate, CC Theatre, 7 p.m.
 Law Wives Bridge, CC Ballroom, 7:30 p.m.
 Chess Club, CC Room C, 7:30 p.m.
 Williamsburg Church of Christ, Millington Auditorium, 7:30 p.m.
 Volleyball (w) Adair Gym, 8 p.m.
 FILM: German House presents "Nachtschatten," German House, 8 p.m.
 CONCERT SERIES: PBK Hall, 8:15 p.m., Richmond Symphony featuring Yong Uck Kim, violinist.
 OD Study Break, OD 1st floor lounge, 10:30 p.m.

WEDNESDAY, NOVEMBER 17

Placement Interviews: U.S. Navy Officers Information Team; G.C. Murphy: Burroughs Corporation, Richmond, Newport News. By appointment.
 U.S. Navy, CC Lobby, 9 a.m. - 4 p.m.
 Environmental Law Group, CC Rooms A&B, 1 p.m. Topic: Kepone prosecution. Public invited.
 Basketball (w) Adair Gym, 4:30 p.m.
 International Circle, Karate demonstration and lecture by Mr. Hiro Hamada, 7 p.m., CC Little Theatre. Public is invited.
 Circle K, Circle K House, 7 p.m.
 SIMS--Introduction to Transcendental Meditation Program, CC Sit 'n Bull Room, 7:30 p.m.
 Williamsburg Church of Christ, Andrews 101, 7:30 p.m.
 PROJECT PLUS FORUM: Paul Spreiregen will speak on "Environmental Design: Past Achievements and Future Prospect," Millington Auditorium, 7:30 p.m. Public is invited to attend.
 Volleyball (w) Adair Gym, 8 p.m.
 Hoi Polloi, presents Andrew Lewis Band, 9 p.m.

THURSDAY, NOVEMBER 18

Placement Interviews: U.S. Navy Officer Information Team; New York Life Insurance, Tidewater. By appointment. York County Public Schools, 1 p.m. - 4:30 p.m. (Dec. 76 graduates). By appointment. Call Office of Educational Placement.
 U.S. Navy, CC Lobby, 9 a.m. - 4 p.m.
 DISSERTATION DEFENSE: Michael McCormick will defend his doctoral dissertation in education, entitled "The Impact of Individualized Curriculum Organization on Faculty Attitudes, Student Attitudes and Student Achievement," CC Room C, 9 a.m.
 Ultimate Frisbee, Sunken Gardens, 1 p.m. Taught by Jamie Heath.
 "Take the World from Another Point of View", a 60-minute filmed interview with physicist Richard Feynman

and zoologist Richard Lewontin. Intended for a general audience. Small 109, 3 p.m.
 Decision Making, Yates Lounge, 3:30 p.m. Taught by Dean Morgan.
 BSA, CC Room C, 4 p.m.
 Basketball (w) Adair Gym, 4:30 p.m.
 Accounting Club, Botetourt Theatre, 7 p.m.
 SIMS--Introduction to Transcendental Meditation Program, CC Sit 'N Bull Room, 7:30 p.m.
 Science Fiction Club, CC Room A&B, 7:30 p.m.
 Chess Club, CC Room C, 7:30 p.m.
 Fellowship of Christian Athletes, CC Green Room, 7:30 p.m.



YOUNG CANADIAN SOPRANO Barbara Shuttleworth will perform in the Sunday Series, November 21, at 4 p.m. in the Campus Center Ballroom. A popular performer in opera on both sides of the Atlantic, Shuttleworth has received the plaudits of press and public as "a soprano of lyric elegance." Her performances with the New York City Opera, the Vancouver Opera, Welsh National Opera, Baltimore Opera, New York Philharmonic, Miami Philharmonic and the Richmond Symphony have won critical acclaim for her acting as well as her voice.
 The public is invited to attend. Although there is no admission charge, a silver collection is taken following the performance.

LECTURE: Dept. of Modern Languages, Dodge Room, 7:30 p.m. Public is invited. Professor Jack Moore will speak on "A Critical New Look at Dulcinea," and Professor Frank Triolo on "Literary Activity in the Second Half of the XVI Century: Speculation on Aristotle's Poetics." Williamsburg Church of Christ, Millington Auditorium, 7:30 p.m.
 Rug Hooking: Swem G-2, 7:30 p.m. Taught by Mrs. Skelton.
 Spanish House "Tertulias" (coffee house), Spanish House lobby, Botetourt Unit 9, 7:30 p.m.
 Volleyball (w) Adair Gym, 8 p.m.
 LECTURE: Department of Modern Languages presents Miles Chappell, "Portraits and Pedagogy in a Painting." Dodge Room, PBK Hall, 8 p.m.
 Techniques of Conversation-Theory and Practice, Yates Lounge, 8 p.m. Taught by Mrs. Arnold Moss.
 Student Organizations: A Nuts and Bolts Approach, 8 p.m. in CC Lobby. Sessions taught by Ken Smith will deal with publicity, how to keep accurate financial records, college regulations affecting organizations, etc.
 LECTURE: The Lyon G. Tyler Historical Society and the German House will present Dr. George V. Strong in a slide presentation and lecture on "Germany in the Third Reich." German House, Botetourt Unit 5, 8

p.m. Public is invited.
 CONCERT: "The Fire of Love and Other Ardent Songs," concert with commentary by Arthur Schrader, CC Theatre, 8:15 p.m. Admission is free.

FRIDAY, NOVEMBER 19

Placement Interviews: Hercules Incorporated, Hopewell. By appointment.
 Basketball (w) Adair Gym, 10:30 a.m. and 4:30 p.m.
 W&M Faculty Club hosts Board of Visitors, Wren Building Great Hall, 5:30 p.m.
 Fencing: St. Mary's of Md. vs W&M J.V. Men, Adair Gym, 7 p.m. St.

nar Room G-1, 6 p.m.
 Minority Student Affairs Symposium, CC Theatre, 7 p.m.

MONDAY, NOVEMBER 22

BSA Housing Committee, Swem Seminar Room G-3, 2:15 p.m.
 Basketball (w) Adair Gym, 4:30 p.m.
 Coed Badminton, Adair Courts, 7 p.m.
 Rug Hooking, Swem G-2, 7:30 p.m. Taught by Mrs. Skelton.
 S.A. Senate, Swem Seminar G-1, 7:30 p.m.
 DOCUMENTARY FILM: German House presents "Berlin-Gedanken uber die Zukunft", German House, 8 p.m.

Notices

W&M FACULTY CLUB will host the Board of Visitors in the Great Hall of the Wren Building from 5:30 to 7:30 p.m. on Friday, November 19.
 DISCUSSION GROUP--An Edgar Cayce Discussion Group is forming now. If you are interested in dreams, psychic phenomena, meditation, or reincarnation please call David Hamilton at 220-3120.

BLOODMOBILE--10 a.m. to 4 p.m. at the Williamsburg United Methodist Church, at 514 Jamestown Road on November 16.

CRAFTS FESTIVAL--The first annual Campus Center Crafts Festival will be held Saturday, Dec. 4, in the lobby of the Campus Center from 10 a.m. to 5 p.m. If interested in displaying and selling any of your own creations, contact the Campus Center at Ext. 235 or 236 for entry forms and details. Deadline for entries is November 30.

KARATE DEMONSTRATION--International Circle is sponsoring a Karate Demonstration and Lecture by Mr. Hiro Hamada at 7 p.m. All are urged to attend at the Little Theatre of the Campus Center, November 17.

OMICRON DELTA EPSILON--The economics honorary is conducting its fall membership drive. If you have had 4 or more courses in economics with a 3.0 for those courses and an overall GPA of 3.0, but are not a declared economics concentrator, please give your name to Clyde Haulman by Friday, November 19.

GRADUATE FELLOWSHIPS--The National Council of Alpha Lambda Delta will award ten fellowships of \$2,000 each for graduate study in 1977-78. Any member of Alpha Lambda Delta who was graduated with a cumulative average of Alpha Lambda Delta initiation standard is eligible. Graduating seniors may apply, if they have achieved this average to the end of the first semester of this year. For application blanks and information, contact Dean S.A. Deery, 210 James Blair Hall.

P.E. PROFICIENCY TESTS--Women's Physical Education Proficiency Tests will be given Nov. 30 and Dec. 1 at Adair Gym from 7:30-9 p.m.

SWEM LIBRARY will observe the following schedule during the Thanksgiving holidays:

Wednesday, Nov. 24, 8 a.m. - 5 p.m.
 Thursday, Nov. 25, CLOSED.
 Friday, Nov. 26, 8 a.m.-5 p.m.
 Saturday, Nov. 27, 9 a.m. - 6 p.m.

The regular schedule resumes Sunday, Nov. 28, and continues until Dec. 21, with the exception of Saturday, Dec. 11, when the Library will remain open until midnight for the benefit of students preparing for semester exams.

Mary's of Md. vs W&M Women, A Team, Adair Gym, 7 p.m.
 S.A. Film Series, "One Flew Over the Coo Coo Nest" and "The Misfits," W&M Hall, 7:30 p.m.
 Fencing: St. Mary's of Md. vs W&M Women, B Team, Adair Gym, 8:30 p.m.

SATURDAY, NOVEMBER 20

Special Programs Workshop, CC Theatre, 9 a.m.
 IFC Dance Marathon, W&M Hall, from 6 p.m. Saturday to 6 p.m. Sunday.
 Phi Mu Sorority Dance, CC Ballroom, 9 p.m. By invitation only.

SUNDAY, NOVEMBER 21

Environmental Law Group, CC Green Room, 12 noon.
 Biology Potluck Supper, Graduate Student Center, 12 noon.
 Fencing: Va. Div. Mens 1976 Championship, Adair Gym, 12 noon.
 Rugby vs Hampden-Sydney, Field behind W&M Hall, 1 p.m.
 Sigma Delta Pi will hold a reception in honor of Hispanic students, Great Hall, 3 p.m. By invitation only.
 THE SUNDAY SERIES: Barbara Shuttleworth, soprano, CC Ballroom, 4 p.m. Public invited. Admission is free, silver collection taken at the door.
 IFC Dance Marathon, W&M Hall, from 6 p.m. Saturday to 6 p.m. Sunday.
 S.A. Senate Committee, Swem Semi-