



William and Mary News

Volume V, No. 13
Tuesday, November 30, 1976

In the News



LOOKING FOR homemade crafts to give as Christmas gifts? The Campus Center Lobby will be filled with crafts made by William and Mary students and area residents for the first annual Campus Center Crafts Festival, Saturday, Dec. 4, from 10 a.m. to 5 p.m.

Parents are invited to bring their children along to watch free showings of the film "Scrooge" in the Campus Center Little Theatre, while they browse among the craft items.

Christmas ornaments, wreaths, and stockings, corn husk dolls, sand candles, plants, woodcarvings, and hammocks are among the many items on sale. Paintings, decoupage and puppets are also included in the Festival.

Campus Center Director Ken Smith anticipates that there will also be demonstrations of pottery making, macrame, weaving and leatherwork. Members of Panhellenic will hold a bake sale.

Although the deadline for entering items for sale was originally Nov. 30, Smith advises those interested that he will accept new entries as long as space remains available. Contact the Campus Center at Ext. 235 or 236 for information.



INDIVIDUAL TICKETS for the Concert Series performance tonight by baritone Simon Estes may be purchased at the Campus Center desk and preceding the performance at the PBK box office. Admission for W&M students and employees is \$3, and \$4 for the general public. Estes will perform at 8:15 p.m. in PBK Hall.

Campus Invited To Dec. 3 Preview Of PBK Original Dramatic Oratorio

"To Form a More Perfect Union," a dramatic oratorio which has been composed especially for the Bicentennial of Phi Beta Kappa, will be previewed at a public performance Dec. 3 at 7:30 p.m. in Phi Beta Kappa Memorial Hall.

Area residents and students are being invited to attend the dress rehearsal performance of the oratorio, which will be premiered for Phi Beta Kappa delegates Dec. 4. A second public performance will be held Dec. 6 at 8:15 p.m. There is no admission charge.

The music and script for the oratorio were written by Martin Robbins of the Radcliffe Institute and James Yannatos of Harvard to "restate the promise of America through the words and deeds that shaped its principles, recreating the dramatic and meditative moments of public, official and private persons in American history. . ."

Through the media of music, dance and visual projections, the oratorio will trace the history of the country through its moods and the characteristics of its people.

The cast will include the William and

Mary choir; a sevenpiece orchestra, dancers from Orchesis, soloists and a narrator. The audience will be directly involved in the performance and will be asked to take the speaking role of "the people" using a commemorative booklet as a script.

Sets will be minimal with props used to give a suggestion of the locale. Costuming will also not be elaborate, with pieces of apparel used to portray the essence of the era.

Howard Scammon, former chairman of the department of theatre and speech and director of "The Common Glory," has been staging the production during rehearsals. The choir has been in rehearsal under the direction of Frank T. Lendrim, chairman of the department of music, and Carol Sherman and Shirley Roby have been rehearsing dancers. Anne McCartney has been working with soloists, who include Cliff Williams, Kathy Exton, Herbert Deppe, Christopher Hux, Beverly Tourdo, Louise March and Ronn Harris.

Roger Sherman, head of the theatre and speech department, has been

working with lighting for the oratorio, and Christopher Boll has been handling technical arrangements.

The narrator for the performance will be the Rev. Cotesworth P. Lewis, rector of Bruton Parish Church. The director will be one of the composers, James Yannatos.

The kaleidoscope of historical events will culminate on a note of hope with the cast and audience singing the Netherlands hymn, "We Gather Together To Ask the Lord's Blessing."

The music will include a medley from Stephen Foster, adaptations of folk and gospel music, barbershop quartet songs, a Mormon hymn, lively square dance tunes and special choral arrangements.

Over 600 delegates are expected to attend the triennial Council meeting of the United Chapters of Phi Beta Kappa, which will be held at the Conference Center at the Williamsburg Lodge.

The five-day program will include several business sessions and addresses by notables in many different areas, as well as the presentation of PBK awards. Among the speakers scheduled are Daniel Boorstin, Librarian of Congress; Edward H. Levi, Attorney General of the United States; Philip Handler, president, National Academy of Sciences; and David Mathews, Secretary of Health, Education and Welfare.

Planning for the Bicentennial meeting of Phi Beta Kappa was initially undertaken by a committee of the Phi Beta Kappa Senate, headed by Edgar F. Shannon, former president of the University of Virginia. Thad Tate, director of the Institute of Early American History and Culture, has been serving as local coordinator.

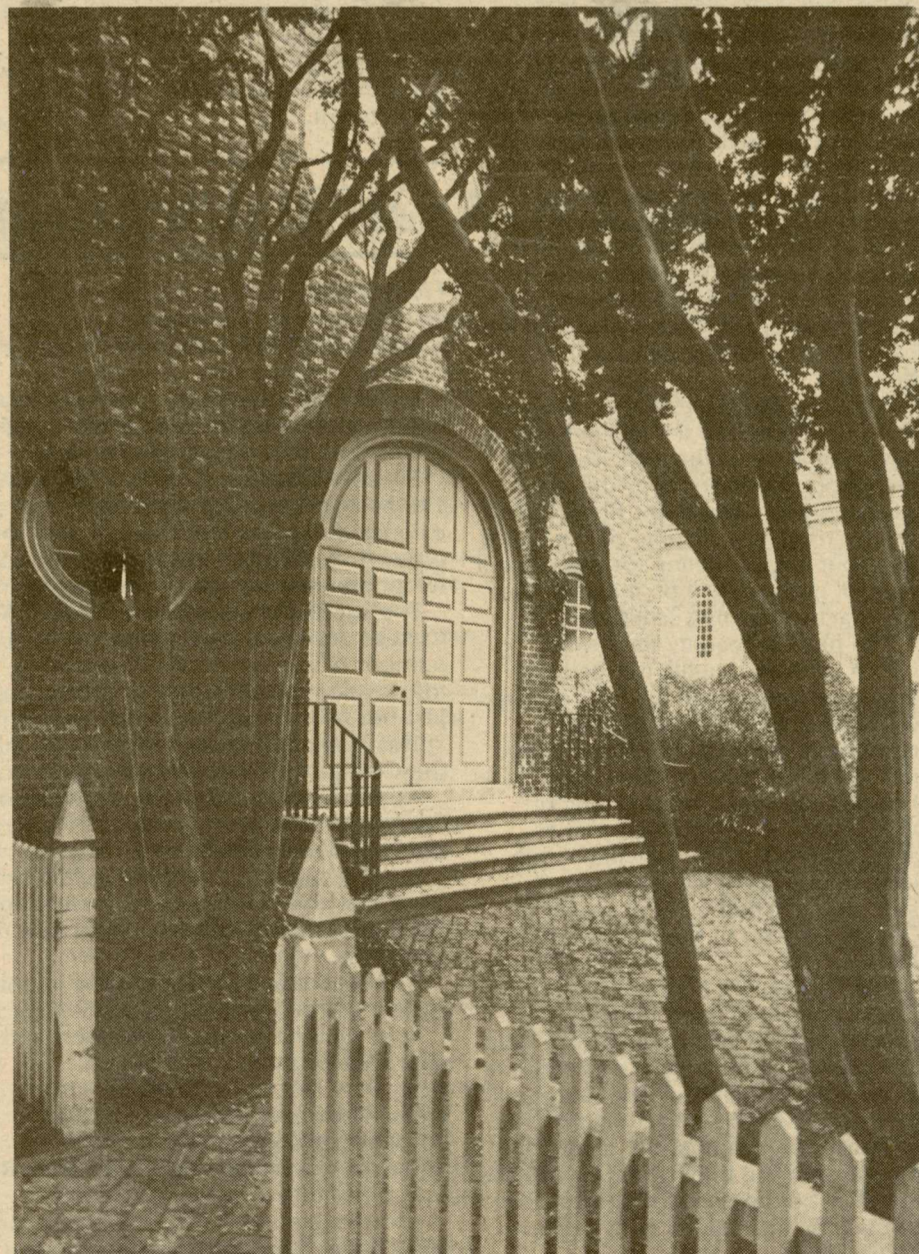
Conference Views Collective Bargaining

A conference on "Collective Bargaining in the Public Sector" will be sponsored December 1 by the School of Education in cooperation with the State Department of Education, for Tidewater school superintendents and their staffs.

Conference sessions will be led by Ronald C. Brown of the Marshall-Wythe School of Law. Brown is a member of the American Arbitration Association and its Public Disputes Settlement Panel. He is active as a labor arbitrator and as a consultant in management-labor relations matters. He is also the author of numerous articles in the area of public sector labor law.

The December 1 conference is the first of a series planned to take up special problems confronting school superintendents. Both the morning and afternoon sessions will be held in the Campus Center.

Royce W. Chesser, professor of education, is local coordinator for the conference.



CREPE MYRTLE trees frame the entrance to the Wren Great Hall.

Fraternity, Sorority Members Greet Conference Participants

Bob Thompson, Inter-Fraternity Council president, and Donna Szuba, Panhellenic president, will present a slide show on the history of fraternities at the College. The presentation, which will cover the founding of Phi Beta Kappa in 1776 to the present day, will be given at the joint meeting of governing bodies of social and professional fraternities in Williamsburg, Dec. 1 and 2.

The National Inter-Fraternity Council, the National Panhellenic Council, the Professional Panhellenic Association and the Professional Inter-Fraternity Council will hold individual business meetings on Wednesday and come together for a fraternity day program on Thursday.

Wednesday evening, sororities on campus will hold open house for members of the NPC.

Margaret Chase Smith, former U.S. Senator from Maine, will be the luncheon speaker for the conference on Thursday, and a formal dinner is planned that evening. Students are packaging informational material in anticipation of 500 conference participants. Conference sessions will be held at the Conference Center at the Williamsburg Lodge.

Hiram College Professor, Poet Slates Public Reading, Dec. 1

Hale Chatfield, a writer whose poetry readings have been termed "funny, dramatic, outrageous, ruthless and emotionally true," will give a public reading of his poetry and fiction on Wednesday, Dec. 1, as part of a three-day visit to the College.

His performance, which is open to the public, begins at 8 p.m. in the Little Theatre of the Campus Center.

Chatfield is associate professor of English and poet in residence at Hiram College, Ohio, and is founder of the "Hiram Poetry Review," an internationally distributed poetry journal



Writer Hale Chatfield

which was first published in 1967.

His published works include three volumes of poetry, "The Young Country and Other Poems" (New York, 1959), "Teeth" (Trumansburg, N.Y., 1967), and "At Home" (Ashland, Ohio, 1971). Four additional works have been accepted for publication in 1977 and 1978.

In 1970 Chatfield was the first recipient of the annual George E.P. Mountcastle Lectureship at the Gilman School in Baltimore. He received a creative writing grant from the National Endowment for the Arts in 1975, and the following year a substantial grant from the National Endowment for the Humanities to operate at Hiram College a three week poetry seminar for high school teachers.



Pianist Karen Przypyszny

Freshman Is Piano Soloist In Orchestra Concert Tuesday

The William and Mary College-Community Orchestra will give its first concert of the season on Tuesday evening, Dec. 7, at 8:15 p.m. in Phi Beta Kappa Hall.

Under the direction of Dora Short, the orchestra will perform the Third Brandenburg Concerto by Bach, Schubert's Unfinished Symphony, the

L'Arlesienne Suite No. 1 by Bizet and Mendelssohn's First Piano Concerto.

The Mendelssohn Concerto will feature a solo performance by freshman Karen Przypyszny of Chicago. Przypyszny, who has studied piano for 11 years and violin for five, was awarded a special merit in the Lyon and Healy Piano Auditions and has received a scholarship from the MacDowell Artists Association. At William and Mary she studies piano with Yona Knorr and violin with Dora Short.

Admission to the concert is \$1 for adults and \$.50 for students. Tickets are available in the Music Department Office, Ext. 374, or at the box office at PBK preceding the concert.

The orchestra has scheduled two additional concerts in its 1976-77 season. On February 6 the orchestra will premiere two works for wind and percussion instruments, by Thomas Rice of Virginia Beach.

On April 26 the orchestra will perform with soloists from the applied music students at William and Mary, chosen in competition.

Biologists At Work On Plant Projects

An attractive mini-museum in Millington Hall and a small amphitheatre near Crim Dell are two project goals toward which Martin C. Mathes of the biology department and others are working.

The museum has been partially completed with a \$2,000 grant from the Treake Foundation of Gloucester, Va. Using the foyer area at the entrance to the greenhouse atop Millington Hall, Mathes has designed display areas which contain some small animals of the area, local species of fish, aquatic plants and insects, and botany displays. Mathes hopes to be able to install projection equipment which would provide a film or slide program for visitors as part of the educational facilities of the museum.

There is currently a cytogenetics display in the area and a case devoted to the "save the osprey" effort in which Mitchell Byrd of the biology department has been very active.

Just inside the doors of the greenhouse, the educational display is con-

tinued with a "Plant of the Month" shelf and a free cuttings bin.

The amphitheatre is projected for the ravine area near Crim Dell, which has been set aside as a Wild Flower Refuge. The plan calls for a five-tiered amphitheatre which fits the natural contours and encompasses a stream which will flow under a small lecture platform. The structure would be used for informal instructional purposes. The amphitheatre has been designed as part of the overall plan for the area by landscape architect Ralph Griswold.

The plantings in the area would take advantage of existing habitats, such as upland woods and moist lowlands, and would include areas for a collection of ferns, representative wild flowers such as Virginia Trillium and Hepatica, and carefully selected shrubs. The plan also calls for meandering paths with benches.

Now that the leaves are off the trees, it is possible to see the labeling which has been done in the area. The C&P Telephone Company provided small silver numbers which are being tested on the trees as a labeling device keyed to a tour map. Labeling for a pest-plant control program will be initiated prior to an active planting schedule.

The plan to beautify the ravine, which takes in roughly two acres of land, was initiated about two years ago when Mathes formed a steering committee composed of Donna Ware of the biology faculty, Miss Libby Hodges and Mrs. Arthur Strong of Williamsburg. The ravine area was accurately surveyed, individual trees located and classified according to size, and detailed maps prepared by Gerald Johnson of the geology department.

Planners received assistance from the Board of Visitors, who formally established the William and Mary Wild Flower Refuge to serve the community as an educational area. The refuge will be devoted to the collection and study of native Virginia plants in a natural habitat with the understanding that the area will not be used for construction but will be maintained in its present natural state.

The ravine, which is bordered by the

old fraternity lodges, Old Campus Road, the Swem Library parking lot and Crim Dell, is well suited to the project. Existing facilities include a small stream, brick walks and security lighting.

The steering committee on the ravine project is currently seeking funds for the program, as well as more supporters. Interested individuals or groups who wish to become involved should contact Mathes in the biology department.

Official Memoranda

From: Dennis K. Cogle
To: The College Community
Subject: **CENTREX Telephone System**

For several months the Chesapeake and Potomac Telephone Company has been installing equipment which will give us one of the most modern and efficient telephone systems available.

Effective February 5, 1977, a CENTREX Telephone System will go into operation. The basic principle of this system is to permit incoming calls to go directly to an extension user without being routed through the conventional switchboard. In order to accomplish this, each extension user will be assigned a private telephone number which will enable an outside caller to dial him directly.

The successful operation of CENTREX depends upon persons within the College and those with whom we do business knowing and dialing the telephone number of the person they are calling. Your cooperation in distributing this information to callers will be greatly appreciated. More detailed information as to just how this may be accomplished will reach you soon.

This is another of the steps we are taking to improve overall efficiency within the College and to better our service to those with whom we do business.

As previously announced, no telephone changes will be made until after the "cut-over" date on February 5. This is necessary in order for all equipment to be thoroughly checked for the "cut-over" on that date.

You also are reminded that, when ordering new stationery, you should bear in mind that you will have a new telephone number after February 5, 1977. Therefore, items bearing your current number should be ordered in limited quantities.

As noted above, more detailed information regarding this new telephone system will be forthcoming in the near future.

Your understanding cooperation in this period of transition will be appreciated.

From: Personnel Office
To: College Community
Subject: **New Minimum Hourly Wage Rate**

Effective January 1, 1977, the minimum wage for hourly and student employees is \$2.30 per hour. Payrolls submitted to the College Payroll Office showing a lower rate for work performed on or after January 1, 1977, will be changed to reflect the new minimum wage.

Employment

The following positions are open to all qualified individuals; however, current faculty and classified employees will receive first consideration. Except where noted, inquiries and applications should be made at the Personnel Office, 201 James Blair Hall, and not at the department where the opening exists. Call 229-JOBS (229-5627) for an updated listing and 24-hour service. An EEO/AA employer.

COMPUTER PROGRAMMER A--\$10,992 per year, Administrative Information Services, deadline Nov. 30.

COMPUTER PROGRAMMER Temporary Position--Salary range \$5.28 - 6.31 per hour depending upon qualifications, 10 weeks, Computer Center, deadline Nov. 30.

CLERK TYPIST B--\$5640 per year, unclassified, no State benefits, Purchasing Office, deadline Dec. 8.

CLERK STENOGRAPHER C--\$6720 per year, Career Counseling Office, deadline Dec. 9.

Zollinger, Campaign Chairman, Dies



J. Edward Zollinger

J. Edward Zollinger, national chairman of the Campaign for the College and a member of the Board of Visitors, died Friday morning at his home in Fort Lauderdale, Florida.

Mr. Zollinger was retired senior executive of the International Business Machines Corp. A Chase City native, he graduated from William and Mary in 1927 and immediately joined IBM. He was with the firm for nearly 40 years.

He served in a number of positions at IBM, including director of systems and engineering service, director of marketing administration for the data processing division, director of contract relations for the data systems division and manager of defense contracts.

"The College of William and Mary has lost a distinguished alumnus and devoted and generous friend," said

President Graves. "Over the years he has made an enormous contribution to his alma mater in many ways. As a member of the Board of Visitors and as chairman of the Campaign for the College, at the time of his death, Mr. Zollinger was, in a way that was so typical of him, devoting all his energies and resources toward the furtherance and betterment of William and Mary. I shall miss his enthusiastic leadership, his wise counsel, and his friendship."

Among Mr. Zollinger's gifts to the College were \$100,000 to establish the Zollinger Professorship of Business Administration, funds to establish the museum in Swem Library, money for the Pat and Agnes Paschall Library in the Alumni House and gifts for the library's special collections.

Last May Mr. Zollinger was named to head the campaign to raise \$19 million

for the College's endowment funds and activities. To launch the drive, he pledged more than \$400,000.

He served on the Board of Visitors from 1966-70 and was renamed to the Board in 1971. He was also a member of the President's Council and a trustee of the College's Endowment Association.

An active alumnus, Zollinger was awarded the alumni medallion in 1963 for service and loyalty. In 1960 he was named an alumni member of Omicron Delta Kappa leadership society.

Mr. Zollinger was national president of Sigma Phi Epsilon fraternity during 1967-71 and served for a number of years as president of the fraternity's educational foundation. In 1973, he received a citation from Sigma Phi Epsilon for distinguished service in the field of business.

Mr. Zollinger is survived by his wife Lucile Gochegan Zollinger; a son, J.W. Zollinger Jr. of Bronxville, N.Y.; and a daughter, Mrs. Frances Zollinger White of Winchester.

The funeral was held Monday at Christ United Methodist Church in Fort Lauderdale. Burial is at 11 a.m. Tuesday, Nov. 30, at Woodlawn Cemetery in Chase City, Va.

Mrs. Zollinger is at home at Fountainhead, Apt. 12-H, 3900 North Ocean Drive, Ft. Lauderdale, Fla. 33308.

Special Exhibit Arranged For PBK Initiation

A special exhibit will be on display at William and Mary, Sunday, December 5, in conjunction with the 200th anniversary celebration of the founding of Phi Beta Kappa at the College and the public initiation of new members of the Alpha of Virginia Chapter.

The special exhibit will be open to the public from 3 to 6 p.m. in the Apollo Room of Phi Beta Kappa Memorial Hall. New members will be initiated in a ceremony to be held in the auditorium of PBK Hall beginning at 4 p.m.

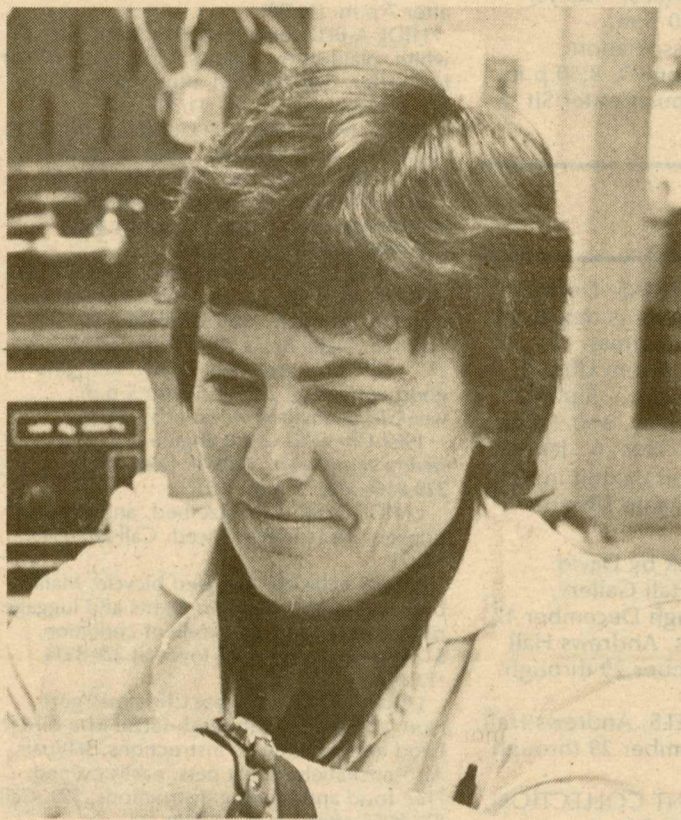
The works chosen for the exhibit will be limited in subject matter to the early years of Phi Beta Kappa, between 1776, when students at the College founded the Society, and 1781, when the British invaded Virginia and Alpha Chapter discontinued its meetings until 1851.

Several oil portraits will be hung for the exhibit, including one of William Short by artist Rembrandt Peale and one of Judge Archibald Stuart, a copy by H. M. Wegner from an original by an unknown artist. Short served as president of the fledgling Phi Beta Kappa Society from 1778-81. He later served as assistant to Thomas Jefferson during his mission to France and as charge d'affaires in France on Jefferson's return to the United States.

Judge Stuart was vice president of the Society while a William and Mary student. After fighting in the American Revolution, Stuart returned to William and Mary to read law under Thomas Jefferson and subsequently was active in Virginia politics.

An original Phi Beta Kappa key belonging to Peyton Short, a watch and fob belonging to William Short, and the minutes of Alpha Chapter, 1776-1781, including the list of the original fifty members, have also been selected for the exhibit.

The material on display has been drawn from the College Art Collection, the College Archives and the Manuscript Collections. Arrangements have been made by Louise Kale, registrar for the College Art Collection, in cooperation with Archivist Kay Domine and Curator of Manuscripts, Margaret Cook.



Charlotte P. Mangum
PBK Faculty Initiate



R. Merritt Cox
1976 Faculty Award

Professors Mangum, Cox Are Honored

The Alpha of Virginia Chapter of Phi Beta Kappa at the College has named Biology Professor Charlotte P. Mangum as Faculty Initiate, and Associate Professor of Modern Languages R. Merritt Cox as recipient of the 1976 Faculty Award for the Advancement of Scholarship.

The two professors will be honored during chapter activities on December 5. Following the chapter's public initiation of its new members, at 4 p.m. in Phi Beta Kappa Hall Auditorium, members and their families will gather for a reception in Andrews Gallery hosted by past presidents of the Alpha Chapter.

At the chapter's banquet that evening in the Campus Center Ballroom, Stanley Williams, professor of psychology and vice president of Alpha Chapter, will introduce the past presidents as well as the Rector of the Board of Visitors, John R.L. Johnson of Chadds Ford, Pa., who is a member of the Alpha of Virginia chapter.

Thomas L. Heacox, assistant professor of English, will read from his poetry as part of the program.

Faculty Initiate Charlotte Mangum is recognized both nationally and internationally as an outstanding authority on physiological respiratory mechanisms in marine invertebrate organisms. Her work in physiological ecology has provided information of a basic nature for understanding the adaptations of marine organisms to their environment.

Since receiving her doctorate at Yale University in 1962, she has completed some 50 publications. These include numerous scientific papers published in the top journals in her field, as well as chapters in review volumes and monographs.

She presently serves in an editorial capacity for several journals and organizations. For several years she has been an associate editor of the *Journal of Experimental Zoology*, and she frequently reviews articles for the *American Scientist*, the official publication of Sigma Xi.

Last summer Professor Mangum was the only American scientist invited by the National Science Foundation to participate on a cruise of their research ship to the Amazon River.

Her research has been consistently supported with NSF grants, and she was awarded a William and Mary Faculty Fellowship in 1973.

Mangum has served on the Executive Committee of the American Society of Zoologists and as Secretary of the Division of Comparative Physiologists of the Society.

She holds an undergraduate degree from Vassar College and both graduate degrees from Yale University.

Professor Cox was chosen for the Faculty Award, which the chapter presents each year to a promising younger scholar.

Cox has become one of the nation's authorities on 18th-century Spanish literature and life. Since Spain was

under the shadow of France during this period, its literature has been neglected until recently. Professor Cox is a member of a small but growing band of scholars who are now giving this period a new and more sympathetic look.

He is the author of several books, including two literary biographies in the Twayne World Authors Series--"Tomas de Iriarte," Spain's leading writer of fables, and "Juan Melendez Valdes," the leading pre-romantic poet. He has also published several articles on these men and on other aspects of the 18th century.

Cox has recently completed a biography of the 18th century English Hispanist John Bowle, which is not yet in print.

In 1971 Cox became the youngest person to be elected a Corresponding Member of the Hispanic Society of America, whose members are the leading American and European Hispanists.

He was awarded the first Archer M. Huntington Pre-Doctoral Fellowship to the Hispanic Society of America, in New York, in 1966; an American Philosophical Society grant to Oxford in 1972, and a William and Mary Summer Research Grant to Oxford the following year. In recognition of his teaching, he was named Outstanding Professor at Duke University in 1972.

He holds an undergraduate degree from the University of Richmond and graduate degrees from the University of Wisconsin.

Calendar

To schedule an event, contact the Campus Center Office, Ext. 235 or 236. When a special program is planned for a meeting on campus, the William and Mary News welcomes further information about speakers, discussion topics, tickets and other details. Contact the News Office, 308 Old Rogers Hall, Ext. 331 or 371.

TUESDAY, NOVEMBER 30

Gideon's Bibles Distribution: Sunken Gardens, areas between Andrews Hall, Library, Commons, CC Lobby, 7:30 a.m. to 5 p.m.
 W&M Soccer Team vs Maiwand Lions (from England), Intramural Field, 2 p.m.
 Interhall Meeting, CC Theatre, 4 p.m.
 Basketball (w) Adair Gym, 4:30 p.m.
 Juggling (beginning) Lambda Chi, 6 p.m.
 Volleyball (w) Adair Gym, 7 p.m.
 S.A. Senate, CC Theatre, 7 p.m.
 Law Wives Bridge, CC Room D, 7:30 p.m.
 Chess Club, CC Room C, 7:30 p.m.
 Residence Hall Life, CC Gold Room, 7:30 p.m.
 FILM: German House presents "Stroh-fuhrer", German House, 8 p.m.
 CONCERT SERIES: Simon Estes, Baritone, PBK Hall, 8:15 p.m.
 OD Study Break, OD 1st floor lounge, 10:30 p.m.

WEDNESDAY, DECEMBER 1

Placement Interviews: Allied Chemical, New York City, New Jersey. By appointment, Office of Placement.
 Williamsburg-James City County Schools. By appointment, Office of Educational Placement.
 Swimming (w) vs University of Maryland, Adair Pool, 4 p.m.
 Basketball (w) vs Christopher Newport, Adair Gym, 6 p.m.
 Basketball (w) vs Christopher Newport, Adair Gym, 7 p.m.
 Spanish House, "Tertulias" (coffee house), Lobby Botetourt Unit 9, Dr. Jose Peman will speak on "Coming Elections in Spain," 7:30 p.m.
 FILM: History Department Film: "The Rise of Louis XIV," Andrews 101, 7:30 p.m.
 Basketball vs. Hampden-Sydney, W&M Hall, 8 p.m.
 Poetry Reading by Hale Chatfield, CC Theatre, 8 p.m.
 Hoi Polloi presents "Just Us," 9 p.m.

THURSDAY, DECEMBER 2

Placement Interviews: New Kent County Schools. By appointment, Office of Educational Placement.
 Campus Ministries lunch, CC Rooms A&B, 12:30 p.m.
 FILM: The Tribal Eye Film series presents "Man Blong Custom," (New Hebrides and Solomons), sponsored by the Anthropology and Fine Arts departments. Millington Auditorium, 4:30 and 7:30 p.m. Admission is free; public invited.
 WRA Volleyball, Adair Gym, 7 p.m.
 Science Fiction Club, CC Rooms A&B, 7:30 p.m.
 Chess Club, CC Room C, 7:30 p.m.
 Fellowship of Christian Athletes, CC Green Room, 7:30 p.m.
 Coalition for Social Action, CC Room D, 7:30 p.m.
 Head Residents and RA Training Session #2, Commons, 8 p.m.

FRIDAY, DECEMBER 3

Placement Interviews, University of Michigan, Graduate School of Business, by appointment only.
 School of Education Learning Disabilities Workshop, CC Theatre, 3 p.m.
 SA Film Series, "Lucky Lady," and "Sisters," W&M Hall, 7:30 p.m.
 PBK "To Form A More Perfect Union," an original oratorio written for the

Society's Bicentennial, Open Dress Rehearsal. Students and the public are invited. PBK Auditorium, 7:30 p.m.

LECTURE: The Marshall-Wythe School of Law presents the first of the George Wythe Lecture Series, Millington Auditorium, 8 p.m. Francis Allen, president of the Association of American Law Schools, will be the guest speaker. Public is invited.
 Delta Delta Delta dance, CC Ballroom, 9 p.m. By invitation only.
 Hoi Polloi presents "ESP," 9 p.m.

SATURDAY, DECEMBER 4

Law School Admissions Test, Millington Auditorium, 8 a.m.
 School of Education Learning Disabilities Workshop, Andrews 101, 8:30 a.m.
 Circle K, Washington Hall, 9 a.m.
 Basketball v. The Citadel, William and Mary Hall, 8 p.m.
 Kappa Delta Christmas dance, CC Ballroom, 9 p.m. By invitation only.

SUNDAY, DECEMBER 5

SA Senate Committee, Swem Seminar G-1, 6 p.m.

MONDAY, DECEMBER 6

BSA Housing Committee, Swem Seminar G-3, 2:15 p.m.
 Swimming (w) v. VCU, Adair Pool, 4 p.m.
 Basketball (w), Adair Gym, 4:30 p.m.
 Coed Badminton, Adair Courts, 7 p.m.
 SA Senate, Swem Seminar G-1, 7:30 p.m.
 PBK "To Form A More Perfect Union," PBK Auditorium, 8:15 p.m.

TUESDAY, DECEMBER 7

Residence Hall Life, CC Gold Room, 10:30 a.m.
 Faculty Meeting, Millington Auditorium, 3:30 p.m.
 Interhall Meeting, CC Theatre, 4 p.m.
 Basketball (w) v. Virginia State, Adair Gym, 6 p.m.
 SA Senate, CC Theatre, 7 p.m.
 Young Democrats, CC Sit 'n Bull Room, 7:30 p.m.
 Chess Club, CC Room C, 7:30 p.m.
 Law Wives' Bridge, CC Room D, 7:30 p.m.
 William and Mary College Community Orchestra, PBK, 8:15 p.m.
 Hoi Polloi presents Donny Bauers, 9 p.m.
 OD Study Break, OD 1st Floor Lounge, 10:30 p.m.

WEDNESDAY, DECEMBER 8

Faculty Luncheon Group, CC Room D, noon.
 Residence Hall Lunch, CC Room C, noon.
 Basketball (w), Adair Gym, 4:30 p.m.
 History Student Organization Christmas Reception, Wren Great Hall, 7:30 p.m.
 MBA Wives' Club, Graduate Student Center, 7:30 p.m.
 Basketball v. Wake Forest, William and Mary Hall, 8 p.m.
 Tyler Dorm Party, CC Theatre, 9 p.m.
 Hoi Polloi presents "Hammond Eggs," 9 p.m.

Religious

BAPTIST - Smith Memorial Baptist Church provides bus transportation for students for Sunday School at 9:45 a.m., and worship services at 11 a.m. and 7:45 p.m. each Sunday. For information, call 229-2998.
 CATHOLIC MASS, Tuesdays, Wren Chapel, 7 p.m.
 CATHOLIC - Mass, Fridays, 7:15 a.m., on campus.
 Mass, Sundays, 5:30 p.m., St. Bede's Parish Center. Supper following, \$1.

CHRISTIAN SCIENCE organization, Thursdays, Campus Center Green Room, 4:30 p.m.

EPISCOPAL HOLY Communion, Thursdays, Wren Chapel, 5:30 p.m.

EPISCOPAL - St. Martin's Episcopal Church provides transportation for students to attend the 10 a.m. Sunday services. Call 229-1100 weekdays.

EPISCOPAL - Candelit Evensong, Sundays, 5:30, at Bruton Parish Church. Service is followed by a Canterbury Dinner, 6:30 p.m., at the Bruton Parish House, Duke of Gloucester St. Admission to dinner is \$1.25, \$1 for those holding cafeteria cards. The service and dinner will be held every Sunday that William and Mary is in session.

HILLEL SHABBOT Services, Fridays, Temple Beth El, 6:30 p.m.

MORMON Student Association. Wednesday, CC-Room-D, 8:30 p.m.

WMCF, Fridays, Campus Center Sit 'n Bull Room, 6 p.m.

Exhibits

A VICTORIAN CHRISTMAS--Decorations, books and pictures depict an English Victorian Christmas. Zollinger Museum, Swem Library. Gallery hours are 8 a.m. - 5 p.m., Monday through Friday, and 9 a.m. - 1 p.m. on Saturday. Dec. 6 - Jan. 6.

COLLEGE SUNDIAL--on exhibit in Zollinger Museum of Swem Library, beginning Dec. 5.

NUDES/WATERCOLOR by David Buckles, Andrews Hall Gallery, November 29 through December 17.
 CERAMIC by students, Andrews Hall Glass Foyer, November 29 through December 17.

ORANGE CRATE LABELS, Andrews Hall, Upper Foyer, November 29 through December 13.

INTERNATIONAL PRINT COLLECTION, Andrews Hall, Lower Foyer, November 29 through December 13.

Notices

RESIDENCE HALL PROGRAM--On Thursday, Dec. 2, the second program for all undergraduate and graduate students interested in residence hall staff positions for next year will be held in the Dining Commons at 8 p.m. The subject will be "Programming of Residence Hall Activities." All students who are considering making application for either Resident Assistant or Head Resident are urged to attend. For further information call Roger Ballou at 220-1781.

STUDENT EMPLOYMENT--Students who will be available for employment from mid-December until the beginning of classes in January are encouraged to register with Mrs. Stensland in the Student Aid Office. It is important that the office know where to reach such students during the recess period for possible part-time job opportunities.

P.E. PROFICIENCY--The Men's Physical Education Department will administer the written part of the proficiency test on Monday, Dec. 6, at 5 p.m. in Room 221 of William and Mary Hall. Students are asked to sign up with their instructor or call the departmental secretary at Ext. 267 before noon on Dec. 6. The practical phase of the test will be administered during Dec. 8, 9 and 10. Students who wish to make up the Survival Swim Test should notify the departmental secretary at Ext. 267. The test will be administered on Fri-

day, Dec. 3, from 3-4 p.m. at Blow Pool.
 P.E. PROFICIENCY TESTS--Women's Physical Education Proficiency Tests will be given Nov. 30 and Dec. 1 at Adair Gym from 7:30-9 p.m.

Classifieds

FOR SALE

BABY ITEMS, good cond., Hedstrom combination carriage/stroller, \$15; GM infant love seat, \$15; Cosco playpen, \$5; crib bumper pad, unused crib sheets and blankets. Also custom-made drapes, 324"x85", 100% Belgian linen, natural color, casement weave, \$85. Call 229-8005. (11/30)
 TYPEWRITER, Royal manual office model, italic type, exc. cond., \$40. Call 220-0177 after 7 p.m. (11/30)
 HIDE-A-BED, queen size, modern, off white, plaid throw pillows 4 mo. old, \$400 or best offer. Call 229-9721 after 5 p.m. or 229-2775 before 5 p.m. (11/30)
 TIRES, two 40,000 mile Goodyear tires, DR 78-14, less than 4,000 mi. wear. Cost \$144 - sell for \$70 for the pair. 229-5555. (11/30)
 RCA 18" B&W TV, good reception in Williamsburg on rabbit ears only, \$50. 229-7646 after 5 p.m. (11/30)
 SANSUI 2000X receiver-amp, Sony TC-366 reel-to-reel deck, (2) Akai SW-125 speakers, Realistic turntable. Call 229-0591. (11/30)
 BIKES, Sears Boy's 20" Spyder and Girl's 20" - \$25, boys excellent cond., \$15, girls good cond. Call 229-4817 after 5 p.m. weekdays, anytime weekends. (11/30)
 1969 Chevelle w/V-8 engine, PS, AT; needs some work, \$375 or best offer. 229-0166 after 5 p.m. (12/7)
 LARGE DESK, twin size bed, and chest of drawers. Reasonably Priced. Call 229-9349. (12/7)
 MEN'S LEJEUNE 10-speed bicycle. Mafac brakes, Simplex derailier. Lights and luggage rack. Barely used, in excellent condition. \$125 or best offer. Call Joyce at 220-3514. (12/14)
 LOOKING FOR a great Christmas gift? How about a pair of peach-faced love birds? Food and health care instructions, \$60/pair. Also cockatiels. Great pets, easily trained. Free food and training instructions, \$50. Call 877-8955 after 6 p.m. (12/14)
 ASTRONOMICAL TELESCOPE, Edmund Scientific 4 1/4" diameter reflector with clock drive, \$90. Old farm style foot powered grind stone, \$45. Full size scythe with wooden snath, \$30. Call 229-1080. (12/14)

WANTED

HOUSE TO RENT, two girls looking for a house close to campus. Can move in after Dec. 15. Call Vicki or Laurel 220-3789. (11/30)
 FEMALE roommate, grad., or law student. \$107.50/plus utilities. Call 229-6889 before 10 a.m. or between 5 and 7 p.m. or after 11 p.m. (12/7)
 ROOMMATE--2 BR Apt. at the Village of Woodshire. Total rent \$230/mo. Please call 229-2837 after 11 p.m. or before 9 a.m. (12/7)

LOST

CAR COAT, men's tan corduroy. Call 229-8005. (11/30)
 RING, York High School Class of 1976 ring. If found, please contact Meo Curtis at 229-3000, Ext. 259. (11/30)

MISCELLANEOUS

DOG--must give away. Small, 20 lb, male, part English Terrier. Housetrained. Call 229-9607 after 6 p.m. (12/7)

FOR RENT

WATERFRONT 4-BR home in Gloucester, available Jan. 1 through May 31. Private pier and many amenities. Asking \$400/mo. Call George Cole at 229-7883. (12/14)

Published weekly by the Office of Information Services during the academic year, except when the College is in recess, and twice each month in June, July and August. Marjorie N. Healy, editor
 Karen G. Detwiler, calendar
 Karen Ross, classifieds
 Publications Office, production