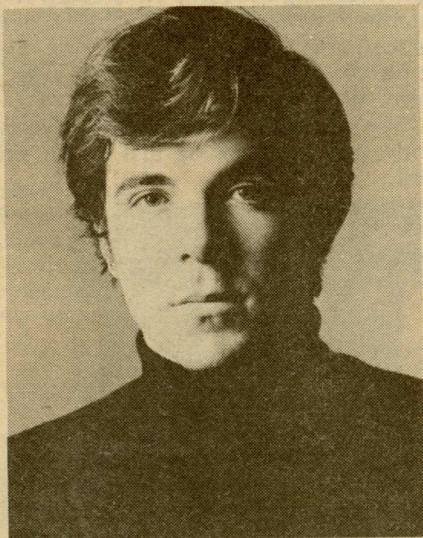




William and Mary News

VOLUME VI, NUMBER 2
TUESDAY, SEPTEMBER 13, 1977

In the News



CONCERT SERIES RECITAL IS SEPT. 22

Pianist Misha Dichter will open the 1977-78 Concert Series, Thursday, Sept. 22, with a recital at 8:15 p.m. in Phi Beta Kappa Hall. Since winning the silver medal of the renowned Tchaikovsky Competition in Moscow in 1966, the 30-year old virtuoso has established himself as one of America's leading young artists. A limited number of general admission tickets will be available beginning Sept. 19 in the office of the director of the Campus Center. Single admission is \$4 for the general public, \$3 for William and Mary students and employees.

PRESIDENT'S RECEPTION FOR NEW GRADUATE STUDENTS

President and Mrs. Thomas A. Graves Jr. cordially invite new graduate students to a reception in their honor on Sunday, Sept. 18, from 4-6 p.m. at the President's House, the College Yard.

SOCCER MATCH SET THIS WEEKEND

William and Mary will compete against the University of Virginia, Old Dominion University, Georgetown, American University and Howard in the first Kiwanis Soccer Classis, September 17 and 18, at 1 p.m. and 3 p.m. in Cary Stadium. Tickets are \$1 in advance at the William and Mary Hall ticket office, and \$1.50 at the gate each day.

Home soccer games will be played Oct. 8 against Davidson; Oct. 22 against UNC-Wilmington; Oct. 25 against Virginia Wesleyan; Oct. 28 against East Carolina; and Nov. 5 against Howard.

Edwards Named Debate Moderator

Jack D. Edwards, professor of government and dean of the Faculty of Arts and Sciences, has been selected as moderator for the Dalton-Howell

gubernatorial debate, which will be held on campus October 17.

The 90-minute debate is the first gubernatorial debate ever to be tele-

vised throughout Virginia and will be held in Phi Beta Kappa Memorial Hall.

The statewide telecast will be sponsored and financed by Virginia's five public television stations and produced by Bruce Miller, public affairs director of WTVT of Annandale. Norfolk's WHRO will originate the telecast which will begin at 7:30 p.m.

Edwards, 41, is a specialist in politics and the judicial process and serves on the Board of Supervisors of James City County. He is president of the Virginia Association of Counties.

A native of Stanley, N.D., Edwards holds a B.A. degree from Macalester College, a law degree from Harvard and a Ph.D. from Vanderbilt.

He joined the college faculty in 1962 and left in 1965 to teach at Grinnell College. He returned to William and Mary in 1966 and was promoted to the rank of full professor in 1973. In 1974 he was named dean to succeed retiring Dr. Harold L. Fowler.

Members of the panel for the debate will be chosen by the College and announced in early October. The panel will consist of professional journalists who are covering Virginia political affairs.

Under Auspices of Applied Chemistry Seminar

Prominent Scientists To Lecture

Several visiting scientists, prominent in private industry and government, will participate in public lectures and seminars for students this fall as part of the College's Seminar in Applied Chemistry.

Each speaker will give a Thursday evening lecture of a general nature and will meet with students in more technical seminars on Friday afternoons.

Dr. James E. Hardwicke, president of the Hardwicke Chemical Co. of Elgin, S.C., will open the series Thursday, Sept. 22, with a lecture entitled "The Entrepreneur, an Alternative Life Style," at 7:30 p.m. in Millington Auditorium. The following day he will conduct a seminar, "From Daisies to Synthetic Pyrethroids."

In October, speakers will include Dr. Allan S. Hay, manager, chemical laboratory, General Electric Co. of Schenectady, N.Y., Oct. 6-7; Dr. Phillip E. Sokol, president of the Gillette Research Institute, Rockville, Md., Oct. 13-14; and Dr. Clair Collins, group leader at Oak Ridge National Labora-

tory and professor of chemistry at the University of Tennessee, Oct. 20-21.

In November, speakers will be Dr. Arthur D. F. Toy, director of the Eastern Research Center, Stauffer Chemical Co. of Dobbs Ferry, N.Y., Nov. 10-11; and Dr. Marshall H. Edgell, associate professor of bacteriology and immunology at the University of North Carolina, Chapel Hill, Nov. 17-18.

A talk by Dr. R.W.F. Hardy, associate director of Central Research and Development, E.I. DuPont de Nemours and Co. of Wilmington, Del., on Dec. 1-2 will complete the fall schedule.

All public lectures will be held in Millington Hall at 7:30 p.m., with the exception of the Toy lecture, which will be held in Room 113, Small Physical Laboratory. Seminars begin at 3 p.m. Fridays in Millington.

James Michener Added To Speaker Series

Pulitzer prize-winning author James A. Michener of "Hawaii" and "The Source" fame, has been added to the list of guest lecturers for the current "Our Future in the Cosmos" lecture series, which is sponsored jointly by the College and NASA-Langley Research Center.

Carson Barnes, director of William and Mary's Office of Special Programs, which handles arrangements for the series, said that Michener will speak on "The Future of the American Family," in the Hampton Coliseum, Jan. 16 at 8 p.m.

The lecture series opened its fourth season last night with a lecture on "The Search for Intelligent Life in Other Worlds," by Walter Sullivan, writer and science editor for the New York Times.

Sir Robert Mark, director, New Scotland Yard, London, will be the second speaker this fall. He will talk on "Terrorism and Law Enforcement," October 14 in William and Mary Hall.

Economist Milton Friedman will be guest lecturer in April. The exact date of his talk will be announced later.

All lectures of the series are open to the general public without charge. Tickets, however, are required, and may be picked up at the box office of the Coliseum the evening of the lecture.



President Thomas A. Graves Jr. welcomed former Secretary of State Dean Rusk to campus last weekend for a conference on "Human Rights and Foreign Policy," sponsored by the Southern Center for International Studies and held in Phi Beta Kappa Hall. Rusk, a member of the Center's board of trustees, was conference moderator. Speakers included New York Times columnist James Reston, U.S. Senator Daniel Maynihan CD-N.Y.) and John Scali, senior correspondent for ABC News. Among the guest panelists was William Lionhart, diplomat-in-residence at the College. Governor Mills E. Godwin, Jr., and the College were conference hosts.



Pianist Marion Perkins

Piano Recital Slated For September 18

Marion Perkins, professor of music at James Madison University, will present a piano recital on Sunday, Sept. 18, at 4 p.m. in Phi Beta Kappa Hall.

There is no admission charge for the concert, which is sponsored by the Music Department.

The program will include works by Mendelssohn, Brahms, Beethoven, Debussy and Chopin. Professor Perkins will also play a composition written for her by S. James Jurtz, also a member of the music faculty at James Madison University.

Perkins has toured widely in Europe as a soloist under the auspices of the U.S. Department of State. In the States her appearances include Town Hall and National Gallery recitals and a concert with the Houston Symphony. Next spring she is scheduled for a number of performances in Scotland, and she will give master classes in Edinburgh.

At the invitation of the late Artur Schnabel, Perkins studied with the renowned Beethoven interpreter and with his son, Karl Ulrich Schnabel. Perkins also holds a doctoral degree in musicology from the University of Southern California.

Etchings By Salvador Dali Among Campus Exhibitions

Etchings by contemporary Spanish artist Salvador Dali are on exhibit through October 29 at the Zollinger Museum of the Earl Gregg Swem Library.

"Prints by Salvador Dali: After Fifty Years of Surrealism" is a portfolio of etchings from the collection of alumnus Richard W. Radebach Jr., of Reston, Va., class of 1974. The museum is open to the public weekdays from 8 a.m. until 4:45 p.m., and on Saturdays from 9 a.m. until 12:45 p.m. There is no admission charge.

Non-rational themes combined with a high degree of technical skill are characteristic of Dali's works.

Another major exhibition on campus, "Beauty Under Foot," is on display through September 23 in the Gallery of Andrews Hall of Fine Arts.

The exhibition, on loan from the Virginia Museum, is a selection of 24 Persian rugs representing a cross-section of the art of rug-weaving.

Gallery hours are 10 a.m.-4 p.m. weekdays. There is no admission charge.

The rugs are semi-antiques and modern-woven after 1800. Designs vary according to the area where they were made. Like most carpets from Persia, these tend to be naturalistic

Success Is Food Service "Problem"

When a new contractor was employed to provide Campus food services this year, College officials and the contractor, Shamrock System of Atlanta, Ga., anticipated some minor problems during the transition period.

Their chief problem, however, has been one that was totally unexpected--the program is an overwhelming success.

Less than a week after classes began September 2 the College was forced to suspend the sale of meal tickets because of an unprecedented demand. Students had purchased some 2,300 meal tickets, 550 more than had ever been sold under the previous food service, an increase of 31 per cent.

Sale had to be temporarily suspended, explained Auxiliary Enterprises Director David G. Healy, because the unexpected demand had "severely taxed the resources of the food service facilities and systems."

To cope with the increase, he said, certain meal hours are being extended, an additional serving line has been established, and additional serving equipment has been ordered. A waiting list has also been set up for students who still wish to board at the College. Currently, 45 students have signed up on the list.

Why the sudden increase in boarders? "The contract specifications offered by the Food Services Committee insured a considerable increase in the quality of the food being served," Healy said, "and Shamrock System has easily met, if not exceeded, those specifications." The improvement in quality, coupled with only slight increases in boarding fees and with more meal plan options, he said, have drawn many students to the campus food service.

Internal Auditor's Location Changed

Internal Auditor Paul Koehly has moved from his office in James Blair Hall, to a new office in Old Rogers Hall, Room 117. His telephone extension is now Ext. 4027.

with designs of flowers, trees, animals and streams. Two design patterns are commonly used--the all-over design and the medallion design, both surrounded by a border of one or more stripes.

Of the two basic types of weaving--tapestry, or plain faced, and pile, or knotted--the latter is by far the most popular. The quality and value of a carpet depend largely upon the number of knots per 2-3/4 inches. A good Persian carpet has 30 knots on this length, while others of matchless quality may have twice this number.

Film To Be Shown In Forum

"Ten Days That Shook the World," a film dramatization of the October 1917 Bolshevik Revolution, will be shown in the Project Plus Forum, Wednesday, September 21, at 7:30 p.m. in Millington Auditorium.

The film, the second of the 1977-78 Project Plus Forums on "Revolution," is open to the public.

Commissioned by the Soviet government to commemorate the 10th anniversary of the Revolution, the film was directed by Sergei Eisenstein. Accord-

ing to film critics Paul Rotha and Richard Griffith, "the intense dynamic vitality that was the keynote of Eisenstein's personality is the dominating feature of his cinematic expression. His films are unparalleled examples of ruthless, throbbing, vigorous direction."

Dance, Painting Programs Given At Asia House

Almanzo Lamoureux will present a lecture demonstration on T'ai Ch'i, a meditative dance form from China, on Wednesday, Sept. 14, at 7:30 p.m. at Asia House, Unit B of the Fraternity Complex.

Lamoureux is an instructor at the Tidewater T'ai Ch'i Institute in Norfolk. After his demonstration, Mr. Lamoureux will talk informally with interested persons about the T'ai Ch'i class he will be teaching at Asia House.

On Thursday, Sept. 15, Nina Cox, Newport News, will give a lecture demonstration on the art of sumi-e, Japanese brush painting. The program will be held in the Asia House lobby at 7:30 p.m. The public is invited to attend.

Healy said he hopes the meal ticket sales will resume when the additional equipment arrives in about a month. Both the College and Shamrock System, he said, intend "to provide quality food service to as many students as possible, as long as quality standards are maintained." Students, faculty and administrative staff on the Food Services Committee will be meeting this month to consider the increased demand and suggest further ways to meet it, he said.

Although the increased number of boarders has resulted in long lines at meal times, few students are turning in their meal cards, said Supervisor of Student Accounts Diane Rice, who is in charge of distributing the cards.

Many more students, she said, are trying to persuade her that they should be issued cards, despite the current sales suspension. Last week, Rice said, she had to turn down a request from the vice president of a local bank branch on behalf of a student with an account at the bank. Because of a bank mix-up when the student opened her new checking account, the student was unable to write checks drawing on her deposit and consequently was not able to purchase a meal ticket before sales were suspended.

"We've tried to accommodate everybody, but right now we just can't," she said.



Jeanne Buckley
Circulation Librarian

Circulation Librarian, Faculty Appointments Are Announced

Jeanne Buckley has been appointed circulation librarian at the Earl Greg Swem Library.

She replaces Robert L. Burr, who resigned earlier this year to become director of Crosby Library at Gonzaga University, Spokane, Wash.

Buckley was previously circulation librarian at Simmons College, Boston, where she was responsible for collection development, organization of circulation procedures, library orientation and public relations.

A graduate of the University of Maine with a major in English, Buckley received her master's degree in library science from Simmons.

Three faculty appointments have been made at the College of William and Mary to fill existing vacancies.

Bambi-Jeanne Stoll has been appointed assistant professor of theatre and speech. She will teach courses in costume design, acting and technical production. Stoll was previously a member of the theatre faculty at the University of South Florida and has worked with numerous theatre companies, both professional and college-affiliated.

Stoll holds a B.A. from the University of South Florida, Tampa, and M.F.A. from the University of Texas at Austin.

William H. Martineau, who was acting assistant professor of sociology at the College during 1976-77, has been appointed acting associate professor for the fall semester. A graduate of Fairfield University, Fairfield, Conn., Martineau received both advanced degrees in sociology from the University of Notre Dame. He has taught previously at George Washington University and Ohio Wesleyan University.

In the philosophy department, Mark Fowler has been re-appointed acting assistant professor. Fowler holds bachelor's and master's degrees from the California State University at Los Angeles and is currently a doctoral degree candidate at Princeton University.

Each year, William and Mary presents a variety of outstanding performances by its own and visiting musicians, actors, dancers, and other artists. Performers, schedules, times, and information on ticket prices for the cultural events are listed here.

Exhibition

Sept 12-Oct 29: PRINTS BY SALVADOR DALI: After 50 Years of Surrealism. A collection of etchings by Spanish painter Salvador Dali (1904-), on loan from alumnus Richard W. Radebach Jr., class of 1974. Zollinger Museum, Swem Library. Open weekdays, 8 a.m.-4:45 p.m.; Saturdays, 9 a.m.-12:45 p.m.

Exhibition

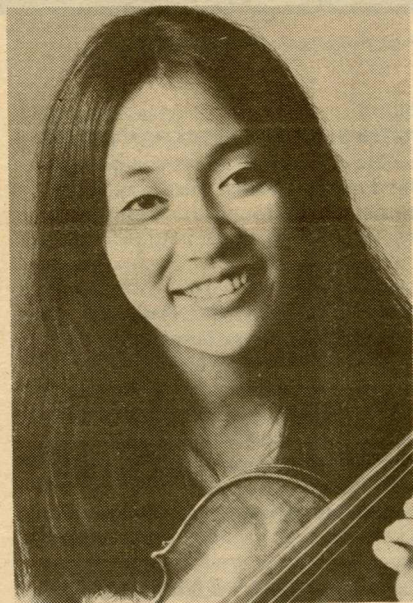
Sept 26-Oct 10: AMERICAN PAINTER PRINTMAKERS. Contemporary prints by some of the best-known American painter-printmakers working today. Campus Center. Open daily.

Exhibition

Sept 26-Oct 14: FACULTY ART SHOW. An exhibition of recent works by William Barnes, Henry Coleman, Paul Helfrich, Wright Houghland, Marlene Jack, Carl Roseberg and Patricia Winter of the Fine Arts Department faculty. Andrews Gallery. Weekdays, 10 a.m.-4 p.m.

Special Event

Sept 30-Oct 2: PARENTS' WEEKEND. Parents of William and Mary students will join their sons and daughters on campus for an exciting weekend of seminars, entertainment and sports events.



Sunday Series

Oct 2: HIROKO YAJIMA, VIOLINIST. According to a New York Times review, "Miss Yajima is a violinist of real distinction. Everything is there--a big tone, accurate pitch, agile bow arm, and a sensitive temperament." Campus Center Ballroom. 3 p.m.

Exhibitions

Oct 3-14: PRINTS FROM THE VIRGINIA MUSEUM COLLECTION. A group of etchings, engravings, woodcuts and lithographs by some of the greatest printmakers of all time. Included are original works by Durer, Rembrandt, Whistler and Hassam. DRAWINGS BY VLADIMIR AKIMOV: LIFE IN RUSSIA. The chaotic years of the Russian Revolution, 1918-1921, are portrayed in vivid pen-and-ink drawings. Andrews Foyer. Open daily.

Theatre

Oct 6,7,8: DAMN YANKEES. A Tony Award winning musical comedy opens the William Mary Theatre's 52nd season. When a fanatic Washington Senators fan swears he'd sell his soul if it would help his team defeat the New York Yankees, an obliging Devil accepts his offer. Louis Catron is director, Lisa Liberati is choreographer, and Ed Godshall is musical director. Phi Beta Kappa Hall. 8:15 p.m. Admission \$3.

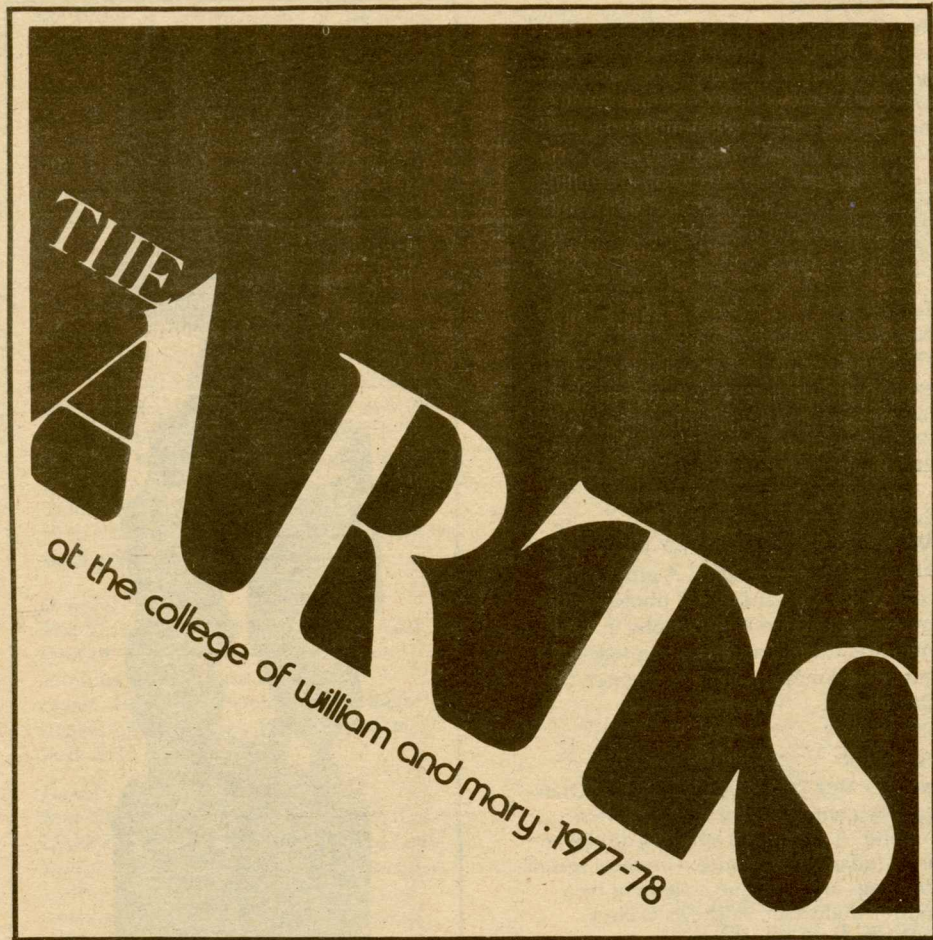
Theatre

Oct 13, 14, 15: DAMN YANKEES. The William and Mary Theatre presents this Broadway favorite, a funny and tuneful version of the Faust legend, coupled with the all-American fascination with baseball. Louis Catron is director. Phi Beta Kappa Hall. 8:15 p.m. Admission \$3.

Lecture

Oct. 14: SIR ROBERT MARK, Director, New Scotland Yard. The second in the W&M/NASA "Our Future in the Cosmos" public lecture series. The spread of nuclear arms, political assassinations and airline hijackings have made terrorism an international concern. Sir Robert, as director of one of the most progressive and effective police organizations in the world, discusses terrorism and the effort to combat it. Hampton Coliseum. 8 p.m. Admission free, but tickets required.

Violinist Hiroko Yajima (at left) will give a recital on campus in the Sunday Series. William and Mary modern dance students (below) will perform with dance instructors Carol Sherman and Shirley Roby on October 22 in a faculty dance concert.



Faculty Recital

Oct 16: CLAUDIA STEVENS, PIANO. A new member of the College's music faculty, Claudia Stevens has performed in recitals throughout the East. She holds degrees in music from Vassar College, the University of California at Berkeley and Boston University. Phi Beta Kappa Hall. 4 p.m.

Exhibition

Oct 17-Nov 4: BERNARD CHAET. Still lifes, watercolors and small paintings by a contemporary American painter and professor at Yale. Andrews Gallery. Weekdays, 10 a.m.-4 p.m.

Exhibition

Oct 17-Nov 4: CHILDE HASSAM. Lithographs and etchings by the American Impressionist Childe Hassam. Andrews Foyer. Open daily.

Concert Series

Oct 18: CLEVELAND QUARTET. Acclaimed as one of the great string quartets of our time, the ensemble received a Grammy nomination and Best of the Year awards from Time magazine and Stereo Review for their first recording of the complete Brahms String Quartets. Phi Beta Kappa Hall. 8:15 p.m. Admission \$4.

Dance

Oct 22: FACULTY DANCE CONCERT. Members of the student modern dance troupe Orchesis will join dance instructors Shirley Roby and Carol Sherman in a premiere performance of original dance compositions. The works, both solo and group dances, were choreographed by Professors Roby and Sherman. Phi Beta Kappa Hall. 8:15 p.m.

Exhibition

Oct 24-Nov 4: PRINTS: 1500 TO 1900. Original prints show the development of graphic art from its origins in the second half of the 15th century to the present. Campus Center. Open daily.

Special Event

Oct 28-30: HOMECOMING WEEKEND. William and Mary alumni and friends return to campus for reunions, sports competition and the traditional Homecoming Parade. Based on the theme "Fanciful Fiction," the parade begins at 10 a.m. Saturday and follows a course from Phi Beta Kappa Hall to the Capitol. The football game against Rutgers begins at 2 p.m. that afternoon at Cary Field.

Faculty Recital

Oct 30: F. DONALD TRUESDELL, PIANO. Professor of music at William and Mary, Truesdell received his doctoral degree from the Eastman School of Music at the University of Rochester. He is past president of the Virginia Music Teachers Association. Phi Beta Kappa Hall. 4 p.m.

Exhibition

Nov 3-30: 1976 PRIZEWINNING BOOKS FROM THE SOUTHERN AND MID-WESTERN BOOKS COMPETITION. Outstanding books published in 1976 in the South and Midwest will be on display in conjunction with a meeting on campus of the Ferguson Seminar in Publishing. Zollinger Museum, Swem Library. Open weekdays, 8 a.m.-4:45 p.m.; Saturdays, 9 a.m.-12:45 p.m.

Sunday Series

Nov 6: WASHINGTON CONSORT. The enthusiasm of the Washington Consort gives verve and vitality to their programs of early music, performed on reproductions of early instruments. Concertgoers will enjoy their gay Italian madrigals, sophisticated medieval motets, sparkling Baroque sonatas and foot-tapping 17th century dance suites. Campus Center Ballroom. 3 p.m.

Exhibitions

Nov 7-18: ETCHINGS BY PETER MILTON: The Jolly Corner. From works created by Milton to accompany the fiction of Henry James, 19th century American novelist. RADICAL REALISM. An exhibition of lithographs. Andrews Foyer. Open daily.

Exhibition

Nov 14-28: PHOTOGRAPHY IN THE FINE ARTS: Director's Choice. A group of color and black-and-white photographs selected from the Photography in the Fine Arts Collection by eleven leading museum directors. Campus Center. Open daily.

Exhibition

Nov 7 - Dec 2: WORKS ON PAPER. Drawings by contemporary artist Stephen Greene. A fruition of years of discipline and studies from nature, Greene's recent drawings are a unique statement by a master draftsman. Andrews Gallery. Weekdays, 10 a.m.-4 p.m.

Theatre

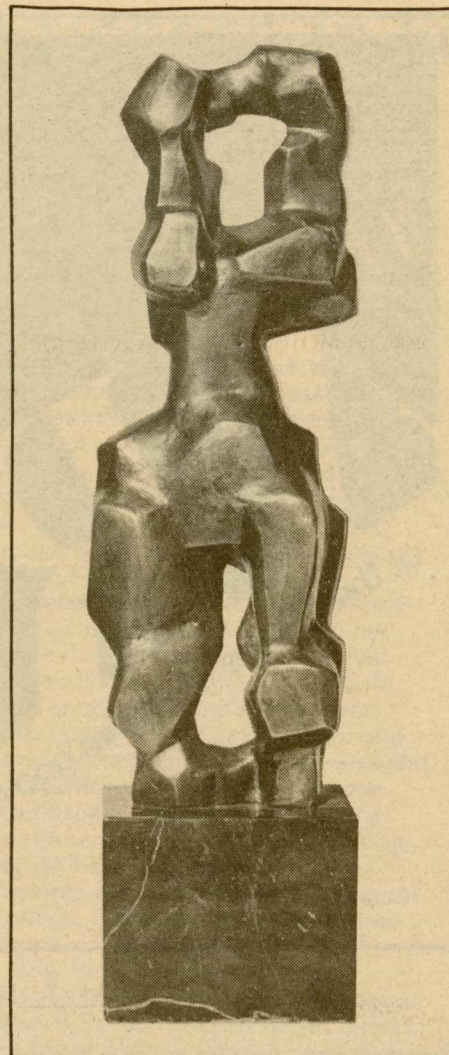
Nov 16, 17, 18, 19: UNCLE VANYA. Anton Chekhov's powerful realistic drama, first presented in Russia in 1899, is The William and Mary Theatre's second show this season. Bruce A. McConachie is director. Phi Beta Kappa Hall. 8:15 p.m. Admission \$2.

Sunday Series

Nov 20: GOVERNOR'S PALACE ORCHESTRA. Costumed musicians will delight the audience with a concert of 18th century Baroque and Classical music, played on instruments familiar to the day. Phi Beta Kappa Hall. 8:15 p.m.

Theatre

Nov 21: THE WRECK: A ROMANCE. Good humor blends with a serious theme in this psychological fantasy. Based on the poem "Diving into the Wreck" by Adrienne Rich, the work was written and will be performed by Theatre X, an experimental acting company based



"Weiblidre Figur" (female figure) is a bronze sculpture given to the College by the artist, alumnus Joseph Jonas, '49, and his wife.

in Milwaukee. Phi Beta Kappa Hall. 8:15 p.m. Admission \$3.

Exhibitions

Nov 28-Dec 9: CONTEMPORARY AMERICAN PRINTS. A selection of prints in various media. RECENT CZECH POSTERS. Many of these posters were created to accompany films, both American and European. Andrews Foyer. Open daily.

Music Department Concert

Dec 2, 3, 4: CHOIR CHRISTMAS CONCERT. A program of choral music for the holiday season, performed by the William and Mary Choir, Botetourt Chamber Singers and the Chorus.

Directed by Music Department Chairman Frank T. Lendrim. Phi Beta Kappa Hall. 8:15 p.m. Admission \$1.50.

Exhibition

Dec 2-Jan 28: PRINTS FROM THE COLLEGE COLLECTION. Around 1732 the Earl of Burlington gave one of the first works to the College Art Collection, a Worsdale portrait of British inventor Robert Boyle. The College Collection has since grown to include the art of six centuries, four continents and a variety of media. Zollinger Museum, Swem Library. Open weekdays, 8 a.m.-4:45 p.m.; Saturdays, 9 a.m.-12:45 p.m.

Sunday Series

Dec 4: ASHLEY PUTNAM, SOPRANO. At the age of 23, Ashley Putnam has already been acclaimed for her exceptional vocal ability and musicianship. Selected one of two First Prize winners in the 1976 Metropolitan Opera Auditions, she has performed leading operatic roles with opera companies from Norfolk to Santa Fe. Campus Center Ballroom. 3 p.m.

Lecture

Dec 5: PHI BETA KAPPA LECTURE AND POETRY READING. This year's celebration marks the 201st anniversary of Phi Beta Kappa's founding by five William and Mary students. As in past years, a poet and a speaker will be featured in the evening program. Phi Beta Kappa Hall. 8:15 p.m.

Music Department Concert

Dec 6: COLLEGE-COMMUNITY ORCHESTRA CONCERT. Composed of students at the College and musicians from the Tidewater community, the orchestra is under the direction of Dora Short. Phi Beta Kappa Hall. 8:15 p.m. Admission \$1.50 for adults, \$.75 for students.

Exhibition

Jan 16-27: WINSLOW HOMER: THE FORMATIVE YEARS. This collection of prints from Harper's Weekly and Appleton's Journal—from the late 1850's to the early 1870's—reveals Homer as one of America's most popular illustrators. Andrews Foyer. Open daily.

Exhibition

Jan 16-30: JOSEF ALBERS: "FORMULATION: ARTICULATION." Works selected from 40 years of Albers' studies in the interaction of color and the possibilities in the relations of form. Campus Center. Open daily.



In February the renowned Paul Taylor Dance Company will perform in the Concert Series.

Exhibition

Jan 16-Feb 3: KATHY SHANAHAN DRAWINGS AND COLLAGES. Recent drawings in mixed media create a fresh way of seeing the world around us. Andrews Gallery. Weekdays, 10 a.m.-4 p.m.

Special Concert

Jan 19: NEW ORLEANS RAGTIME ORCHESTRA. The repertoire of the seven-piece orchestra includes not only "classic rag" numbers but also marches, cakewalks, waltzes, blues and other New Orleans jazz numbers with elements of ragtime. Phi Beta Kappa Hall. 8:15 p.m. General admission \$4. Admission for Concert Series season ticket holders, \$2.

Sunday Series

Jan 22: "ROTATIONS." Scientist and musician alike have been fascinated with the possibilities for music in a computer age. Dexter Morrill, chairman of the music department at Colgate University, explores some of those possibilities as well as the classical compositions of Bach and Beethoven, in a program of computer-generated music. Campus Center Ballroom. 3 p.m.

Operetta

Jan 25, 26, 27, 28: H.M.S. PINAFORE. The student opera company Sinfonicron will brighten several winter evenings with their staging of the lively Gilbert and Sullivan operetta "H.M.S. Pinafore." Phi Beta Kappa Hall. 8:15 p.m. Admission \$3 for adults; \$2, students and children.

Exhibitions

Jan 30-Feb 17: IMAGES I and IMAGES II. Amazing technological advancements in the field of photography have made it possible to create astounding and revealing images of areas previously invisible to the human eye. Andrews Foyer. Open daily.

Exhibition

Feb 1-Mar 13: ARTUR STRAUSS AND THE GERMAN EXPRESSIONISTS. A loan exhibition of modern German Expressionist paintings and prints. In addition to Strauss, such well-known artists as Christian Rohlf, Oskar Kohoschka and Paul Modersohn-Becker are represented. Zollinger Museum, Swem Library. Open weekdays, 8 a.m.-4:45 p.m.; Saturdays, 9 a.m.-12:45 p.m.

Concert Series

Feb 2: PAUL TAYLOR DANCE COMPANY. Since the company was formed in 1955, Paul Taylor has choreographed over 70 dances. He has received the Festival of Nations' International Award for Choreography and twice was the recipient of a Cuggenheim Fellowship for choreography. In 1967 he was selected for the Capezio Dance Award. Phi Beta Kappa Hall. 8:15 p.m. Admission \$4.

Music Department Concert

Feb 5: COLLEGE-COMMUNITY ORCHESTRA CONCERT. The second of three concerts being presented this season by the orchestra, which is directed by Dora Short. Phi Beta Kappa Hall. 8:15 p.m. Admission \$1.50 for adults; \$.75 for students.

Special Event

Feb 5-18: BLACK CULTURE SERIES. Civil rights leader Julian Bond was one of the top attractions of the 1976-77 series. This year's programs will again feature a nationally known speaker as well as gospel, jazz and boogie concerts, films, variety shows and a host of events focusing on Black thought and art. Sponsored by the Black Student Organization on campus. Schedule to be announced. For information, call the Minority Student Affairs Office at 253-4247.

Concert Series

Feb 7: ORPHEUS ENSEMBLE. Now in its sixth year, the Orpheus Ensemble is a rarity—its 24 members perform without a conductor, and rotate in the first-chair positions. Critics have praised their performances for their "envious spirit of spontaneity and dedication" and for "an enthusiasm that is hard to resist." Phi Beta Kappa Hall. 8:15 p.m. Admission \$4.

Convocation

Feb 11: CHARTER DAY. This year's convocation marks the 285th anniversary of the granting of the Royal Charter, which formally established the College in 1693. A prominent scholar is invited to address the convocation, and two outstanding faculty members are designated recipients of the Thomas Jefferson Awards. Phi Beta Kappa Hall. Time to be announced.

Exhibition

Feb 14-28: THE HAMPTON ALBUM. An exhibition of photographs by Miss Frances Benjamin Johnston of Hampton Institute, taken for the Paris Exposition of 1900. Campus Center. Open daily.

Sunday Series

Feb 19: OMEGA GUITAR QUARTET. This young British ensemble will delight audiences with their program of both classical and modern guitar music. "Their repertory of new music and the range of sonorities to be obtained from their instruments are like a breath of fresh air after the majority of guitar programmes," says the London Daily Telegraph. Campus Center Ballroom. 3 p.m.

Exhibitions

Feb 20-Mar 3: KAETHE KOLLWITZ. Etchings by a modern German artist who rebelled against the injustices which swept her country in the 1930's and 40's. ROBERT INDIANA: DECADE. A portfolio of serigraphs of the most important images created by Robert Indiana during the sixties. Andrews Foyer. Open daily.

Theatre

Feb 22, 23, 24, 25: THE BIRTHDAY PARTY. Harold Pinter's unusual "comedy of menace" is among the plays that have earned him the reputation of being "the most original, disturbing, and arresting talent in theatrical London." Directing the William and Mary Theatre production is Louis E. Catron. Phi Beta Kappa Hall. 8:15 p.m. Admission \$2.

Faculty Recital

Feb 26: F. DONALD TRUESDELL, PIANO. Professor of Music at the College, Truesdell consistently includes works from the 20th century in addition to the masterpieces of the 18th and 19th centuries in his recitals. Phi Beta Kappa Hall. 8:15 p.m.

Exhibitions

Mar 13-24: NATIONAL WATERCOLOR SOCIETY EXHIBITION. Original watercolors selected especially for exhibition in Virginia. 19TH CENTURY POSTERS: IMAGES AS ADVERTISEMENTS. Created in the late 1800's, these posters reflect

the liveliness characteristic of the times. Andrews Foyer. Open daily.

Exhibition

Mar 13-27: POLISH CIRCUS POSTERS. Large, colorful posters designed by Polish artists for various circus groups. Assembled by Graphis magazine, they mark a resurgence of the circus poster in a new and exciting form. Campus Center. Open daily.

Theatre

Mar 15: MOTHER COURAGE AND HER CHILDREN. Bertolt Brecht's chronicle of the Thirty Years' War has been acclaimed as the playwright's masterpiece and the prime example of his "epic theatre." Directed by Alan Schneider and performed by The Acting Company of the drama division of the Juilliard School, New York. Phi Beta Kappa Hall. 8:15 p.m. Admission \$3.

Concert Series

Mar 17: CANADIAN BRASS ENSEMBLE. One of Canada's foremost brass ensembles will perform a variety of music, from Scott Joplin rags to Bach fugues and fantasies. Phi Beta Kappa Hall. 8:15 p.m. Admission \$4.

Dance

Mar 23, 24, 25: ORCHESIS "EVENING OF DANCE." Students in the modern dance troupe Orchesis perform in a colorful variety of solo and group dance compositions, choreographed by Orchesis members. Phi Beta Kappa Hall. 8:15 p.m.

Exhibition

Mar 28-May 6: OWL FEATHERS. A collection of silkscreen prints by contemporary artist William Crutchfield and a recent gift to the College by New York artist Mrs. Gertrude Perrin. Zollinger Museum, Swem Library. Open weekdays, 8 a.m.-4:45 p.m.; Saturdays, 9 a.m.-12:45 p.m.

Music Department Concert

Mar 31: CARL HIBBARD MEMORIAL BAND CONCERT. Directed by Charles R. Varner, the William and Mary Band will perform both classical and contemporary works in its annual tribute to a former band student. Phi Beta Kappa Hall. 8:15 p.m. Admission \$1.

Sunday Series

Apr 2: MARIAN HAHN, PIANIST. A graduate of Oberlin College and of the Juilliard School of Music, Miss Hahn has been awarded many prizes for her extraordinary musicianship. She has taken first place awards in the 1969 Losciuszko Foundation Chopin Competition and the 1975 North Carolina Symphony Auditions and in 1973 was selected a winner of the Concert Artists Guild Auditions. Campus Center Ballroom. 3 p.m.



"Owl Feathers," a collection of silkscreen prints, is on exhibition through May 6 in the Zollinger Museum

Exhibition

Apr 3-17: ORANGE CRATE LABELS. The art of citrus label lithography, which began about 1850, became obsolete after World War II, when the crate was replaced by pre-printed corrugated cartons. The original labels are now considered collector's items. Campus Center. Open daily.

Exhibition

Apr 3-26: STUDENT ART SHOW. Works by William and Mary student artists in a wide range of media. Andrews Gallery. Weekdays, 10 a.m.-4 p.m.



Marcus Thompson, violist, appears in the Sunday Series on April 23.



The Acting Company's production of Brecht's epic drama "Mother Courage and her Children" is one of two visiting productions sponsored by the William and Mary Theatre.



Charles R. Varner directs the William and Mary Band in concert.

Theatre
Apr 12, 13, 14, 15: THE SCHOOL FOR WIVES. Moliere's classic French comedy is the final production this season by the William and Mary Theatre. First presented in Paris in 1662, the play

champions the right of women to their choice in love. Its satire against marriage and crotchety old age is created in light, measured, comic strokes. J.H. Bledsoe directs. Phi Beta Kappa Hall. 8:15 p.m. Admission \$2.

Faculty Recital

Apr 16: DORA SHORT, VIOLIN. A noted musician, Dora Short is a member of the William and Mary faculty and directs the College-Community Orchestra. She is also a member of the faculty of the Juilliard School of Music and has performed in Town Hall in New York on several occasions. Phi Beta Kappa Hall. 8:15 p.m.

Concert Series

Apr 18: JESSYE NORMAN, SOPRANO. Since winning the first prize at the Bavarian Radio Corporation International Music Competition ten years ago in Germany, Norman has appeared throughout Europe and the United States. Phi Beta Kappa Hall. 8:15 p.m. Admission \$4.

Music Department Concert

Apr 21, 22: SPRING CHOIR CONCERT. The William and Mary Choir, Botetourt Chamber Singers and Chorus present a variety of choral selections in their annual Spring Concert. Directed by Professor Frank T. Lendrim. Phi Beta Kappa Hall. 8:15 p.m. Admission \$1.50.

Sunday Series

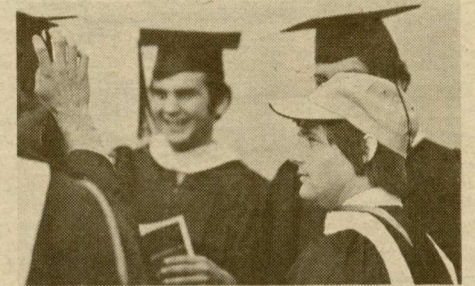
Apr 23: MARCUS THOMPSON, VIOLIST. "Marcus Thompson played with the authority of a mature artist. He combined vigor and sensitivity, rhythmic power and tonal color," said a New York Times reviewer. Thompson holds master's and doctoral degrees from the Juilliard School. In addition to his career as a concert artist, he is professor of humanities at the Massachusetts Institute of Technology. Campus Center Ballroom. 3 p.m.

Exhibition

Apr 24-May 8: JEFF MACNELLY CARTOONS. Original drawings for political cartoons in the Richmond News Leader, where MacNelly has been editorial cartoonist since 1970. The recipient in 1972 of a Pulitzer Prize, MacNelly is recognized nationwide for giving humorous and creative expression to his political insights. Campus Center. Open daily.

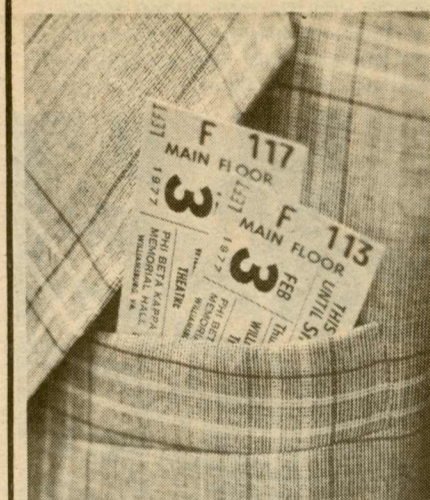
Music Department Concert

Apr 25: COLLEGE-COMMUNITY ORCHESTRA CONCERT. The final concert in a series of three presented this season by the orchestra, which is directed by Dora Short of the William and Mary faculty. Phi Beta Kappa Hall. 8:15 p.m. Admission \$1.50 for adults; \$.75 for students.



Convocation

May 14: COMMENCEMENT. More than a thousand graduating students will participate in this colorful academic ceremony. Following an address by a distinguished speaker, honorary degrees will be presented and outstanding students recognized. William and Mary Hall. 2 p.m.



Tickets

CONCERT SERIES

Season tickets are available to all William and Mary students and employees for \$10 and to the general public for \$15. A season ticket admits patrons to the six regular Concert Series performances and allows holders to purchase a discounted ticket for the special concert. Tickets may be obtained by writing to: Concert Series, The College of William and Mary, Williamsburg, VA 23185; or by calling 253-4557.

General admission tickets, if available, are sold one week prior to the performance at the Campus Center on Jamestown Road, and on the evening of the performance at the box office in Phi Beta Kappa Hall. Individual tickets are \$3 for William and Mary students and employees, and \$4 for the general public.

All concerts are held in Phi Beta Kappa Hall, commencing at 8:15 p.m. There are no refunds, except in cases of cancellation of a concert. Due to the demand for tickets, seating is not guaranteed after 8 p.m.

Tickets for the special concert, January 19, by the New Orleans Ragtime Orchestra, are \$4 for the general public and \$2 for season ticket holders. Tickets will be sold on a first-come basis, and a season ticket does not guarantee the holder seating.

WILLIAM AND MARY THEATRE

Despite increasing production costs, there will be no increase in William

and Mary Theatre admission prices. Season tickets remain \$7 for The Theatre's own four productions, and \$12 for those four shows and two by visiting companies. Season tickets may be ordered from The William and Mary Theatre, College of William and Mary, Williamsburg, VA 23185, or by calling The Theatre's general office at 253-4395.

Individual admission remains \$2 each for The Theatre's own three plays, and \$3 for The Theatre's musical-comedy production and the performances by the two visiting companies.

The Theatre's box office in the foyer of Phi Beta Kappa Hall is open week-day afternoons during the week of production, from 3 to 5:30 p.m., and preceding each performance, from 7 to 8:15 p.m. During box office hours telephone reservations are accepted at 253-4272. The first day of box office operations for any production is for season ticket patrons only. All seats are reserved.

OUR FUTURE IN THE COSMOS PUBLIC LECTURE SERIES

The series is open to the public without charge. Because of limited auditorium seating, however, admission tickets are distributed by the College's Office of Special Programs. To obtain tickets, write the Office of Special Programs, 12070 Jefferson Avenue, Newport News, VA 23606, or call 877-9231, Ext. 200 or 201.

MUSIC DEPARTMENT CONCERTS

Choir Concerts

Tickets may be purchased in advance at the front desk of the Campus Center on Jamestown Road, Music Department office in Ewell Hall and the switchboard in James Blair Hall. Tickets will also be available on the evenings of the performances at the Phi Beta Kappa box office. Admission is \$1.50.

Band Concerts

Tickets are available in advance at the Campus Center front desk, and preceding the concert at the Phi Beta Kappa box office. Admission is \$1.

Orchestra Concerts

Tickets are available in advance at the front desk of the Campus Center, Music Department office in Ewell Hall and the switchboard in James Blair Hall. Tickets may also be purchased on the evenings of the performances at the Phi Beta Kappa box office. Admission is \$1.50 for adults and \$.75 for students.

Sinfonicron Operetta

Tickets will be available at the Phi Beta Kappa box office during the week of performance. General admission is \$3; students and children, \$2.

Newsmakers

The professional appointments, lectures, achievements and publications of William and Mary faculty and staff are featured regularly in this column.

Faculty members in all schools and departments and professional staff in all offices are invited to submit written notices of appropriate professional activities to the News Office, 308 Old Chemistry Building.

It is the policy of the William and Mary News to include only activities of a professional capacity to an audience directly related to the speaker's field of expertise. Attendance at conferences will be included only if a faculty member or administrator has contributed to the program in a significant way, such as delivering a paper or address, or chairing a session.

Sociology professor **Vernon H. Edmonds** was recently appointed associate editor of the *Journal of Marriage and the Family*.

Philip E. Downs, School of Business Administration, presented a paper at the American Marketing Association Educators' Conference held in Hartford, Conn., in August. His paper, which was entitled "Utilizing Multi-dimensional Scaling to Predict Brand Share: Issues and an Alternative Technique," was also published in the conference *Proceedings*.

Donald J. Messmer also attended the fall meeting of the American Marketing Association and chaired a session on management issues in marketing. Messmer was also a reviewer for papers presented at the conference.

Jay Chambers and **Mary Beth Surma** of the Psychological Services Center have published an article, "Need Associations and Psychopathology" in a recent issue of the *Journal of Personality Assessment*.

In the philosophy department, professor **Alan E. Fuchs** recently returned from the meetings of the American Political Science Association in Washington, D.C., held Sept. 1-3. Fuchs presented a paper entitled "Moral Geometry: The Philosophical Justification of the Principles of Justice." He also participated in a special interdisciplinary panel that explored disciplinary differences in "reading" and interpretation. Both presentations were on the program of the Foundations of Political Theory Group.

Vickie Babenko, modern languages, has had an article "Contemporary Ukrainian Poetry: Mirror of Sociopolitical Forces," accepted for publication by the *Ukrainian Review* in Great Britain. She has also published two reviews on Kaverin's *Osveshchennye oxna* and Zinov'ev's *Vovremia, stikhi* in *World Literature Today*.

A paper entitled "The Relation of Politics to Morality in Kant's Philosophy: Some Comments on Galston, Riley and Elshain" was presented by **Bruce Rigelman**, government, at the annual meeting of the American Political Science Association, held Sept. 1-4 in Washington, D.C. In June, Rigelman attended the annual meeting of the Northeast Association of Pre-Law Advisors, held at Haverford College.

C. D. Alley, a William and Mary graduate who is currently a post-doctoral student at the Medical College of Virginia, and **Joseph Scott** of the biology department recently published an article entitled, "Unusual dictyosome morphology and vesicle formation in tetrasporangia of the marine red alga *Polysiphonia denudata*" in the *Journal of Ultra-*

Faculty Club Parties Set

The Faculty Club has planned a series of five cocktail parties to be held throughout the coming academic year. The first event, which is free to club members, will be held on Friday, Sept. 23, from 5:30 to 7:30 p.m. at the Alumni House. Dates for the remaining parties will be announced in the *William and Mary News*.

Faculty Club dues are \$8 for the year and entitle members and their spouse or guest to attend the first party free of charge. Members are also entitled to purchase two tickets at the reduced rate of \$2.50 per person for each of the remaining four parties. Non-members will be charged \$4 per person. Non-drinking members and/or their guests may purchase special non-alcoholic tickets at \$1.50 each, and non-drinking non-members may purchase tickets at \$2.50 each. As in the past, emeriti faculty of William and Mary are extended complimentary membership to the Faculty Club.

Richard Prosl, Department of Mathematics, is president of the Faculty Club; Lewis Foster, Philosophy, is treasurer, and Norman Fashing, Biology, is secretary.

Membership dues are now being received by Lewis Foster and may be sent to him by campus mail. Dues may also be paid at the first party. All members of the faculty and administration are invited to become members of the Faculty Club and participate in the Club's activities.

structural Research.

In August, Scott chaired a session of the IX International Seaweed Symposium at Santa Barbara, Calif., and presented a paper entitled "Cell division in *Polysiphonia*" co-authored by **K. Schornstein** and **J. Thomas**, also of the biology department.

James E. Smith, business administration, conducted a tax seminar entitled "Managing Today's Tax Practice" for the American Institute of CPA's in New York City in July. Smith later presented a paper entitled "The Closely-held Business: An Appraisal" at the Third Annual Estate Planning Conference in Virginia Beach in August. He also conducted a seminar on partnership taxation in Alexandria for the Virginia Society of CPA's earlier this month.

Lawrence Wiseman, biology department, published the following papers during the summer:

"Can the differential adhesion hypothesis explain how an aggregate of

strongly cohesive cells can be penetrated by more weakly cohesive cells?" in *Developmental Biology*.

"Contact inhibition and the movement of metal, glass, and plastic beads within solid tissues" in *Experientia*.

"Self vs. nonself in tissue assembly. Correlated changes in recognition behavior and tissue cohesiveness" in *Developmental*, in collaboration with H. M. Phillips, University of Virginia, and M. S. Steinberg, Princeton University.

James E. Smith of the School of Business Administration published two papers over the summer: "The Continuing Demise of the Home Office Deduction: The Impact of the Tax Reform Act of 1976", which appeared in the June issue of *The Tax Advisor*, and "The Influence of the Tax Reform Act of 1976 on the Partnership: A Recognition and Planning Perspective," in the June issue of the *Virginia Accountant*.

October 21 Is Deadline For Fulbright Applications

The 1978-79 competition for grants for graduate study abroad offered under the Mutual Educational Exchange Program (Fulbright-Hays) and by foreign governments, universities and private donors will close shortly. Only a few more weeks remain in which qualified graduating seniors and graduate students may apply for one of the 550 awards which are available to 53 countries.

Most of the grants offered provide round-trip transportation, tuition and maintenance for one academic year, a few provide international travel only or a stipend intended as a partial grant-in-aid.

Candidates must be U.S. citizens at the time of application, hold a bachelor's degree or its equivalent by the beginning date of the grant, have language ability commensurate with the demands of the proposed study projects, and good health.

For graduating seniors and M.A. candidates, opportunities exist particularly in the following countries: Afghanistan, Belgium, Cameroon, Chile, France (Teaching Assistantships and Alliance Francaise Scholarships), Germany, Italy (Teaching Assistantships) Lesotho, New Zealand, Portugal, Senegal, Sudan, Sweden, Switzerland, Tanzania, the U.S.S.R., and Yugoslavia, as well as all countries to which ITT International Fellowships are available.

Opportunities for candidates in the creative and performing arts exist particularly in the following countries:

Austria, Cameroon, France, Germany, Indonesia, Italy, Japan, Korea, Peru, Poland, Portugal, Romania, the U.S.S.R., Yugoslavia, and Zaire.

Application forms and further information for students currently enrolled at William and Mary may be obtained from the campus Fulbright Program Adviser Professor Gary Smith, Washington Hall 106C. The deadline for filing applications is October 21.

Seven members of the physics department, **Morton Eckhause**, **Franz Gross**, **John Kane**, **W. Jack Kossler**, **Charles Perdrisat**, **Robert Siegel** and **Robert Welsh**, were among the more than 450 participants at the VIIth International Conference on High Energy Physics and Nuclear Structure, held in Zurich, Switzerland, Aug. 29 - Sept. 2.

Their contributions included an invited talk on "Relativistic Aspects of Nuclear Wave Functions" (Gross); chairmanship of the workshop session on exotic atoms (Welsh); and short talks on "Muonic X-Ray Intensities in Low-Z Elements and Hydrides" (Eckhause), "Experimental Studies of the Formation of Antiproton-proton Atoms in Gaseous and Liquid Hydrogen" (Kane), "Recent Results in Muon Spin Precession Studies" (Kossler), and "Radiative Muon Capture in Calcium" (Siegel). Papers posted at the conference included "Backward Production of Pions by 700 MeV Alphas and 350 MeV Deuterons" (Perdrisat).

Employment

ASSISTANT BUDGET DIRECTOR--\$10,992 per year, Office of the Vice President for Business Affairs, deadline Sept. 15. Qualifications: bachelor's degree with major studies in accounting or business administration plus two years of responsible administrative experience with emphasis in budget work. Additional education related to business administration, particularly in budget analysis, may be substituted for the experience on an equivalent time basis.

CLERK TYPIST B--unclassified, \$5880 per year, full State benefits, Athletics Department, deadline Sept. 16.

CLERK TYPIST C--\$6720 per year, School of Business Administration, deadline Sept. 15.

CLERK D--\$8040 per year, Swem Library Audio-Visual, deadline Sept. 16. Applicant should be capable of operating audio recording and duplicating center and should be qualified to serve as technical advisor to faculty and students in preparation of sound slide shows.

CLERK SEARCHER--part time, unclassified, \$2.50 per hour, 20 hours per week, Swem Library Circulation Department, deadline Sept. 14. Duties include searching for missing books and contacting library users regarding overdue books.

CLERK TYPIST--unclassified, \$3.53 per hour, Office of Development, deadline Sept. 16. Will be trained to operate computer terminal.

CLERK TYPIST--\$125 per week, for Shamrock System at the Commons Dining Hall, deadline for application and typing test in William and Mary Personnel Office is Sept. 13.

Official Memorandum

To: The College Community
From: William J. Carter, Vice President for Business Affairs and Warren Heemann, Vice President for College Development
Subject: **Grants Fiscal Administration**

The responsibility for the fiscal administration of federal grants and contracts for research has recently been assigned to the Vice President for Business Affairs. Formerly a part of the Office of College Development, the department has been renamed the Office of Grants, Fiscal Administration.

Mrs. Susan Y. Hershner continues to be responsible for this function, and reports to Mr. Floyd E. Whitaker, Treasurer of the College. The Office of Grants, Fiscal Administration is now located next to the Purchasing Office in James Blair Hall, room 305. The telephone extensions used in the former quarters in Old Rogers Hall, which are extensions 4563 and 4629, have been retained.

Mrs. Hershner coordinates the fiscal administration of Federal grants and contracts from the date of award to the conclusion of the program. The responsibility for approval of grant proposals remains with the Vice President for College Development. The Office of College Development will continue to coordinate the preparation, submission and negotiation of proposals, up to the date of award.

Faculty and staff with questions regarding grants in progress should contact the Office of Grants, Fiscal Administration, and those with questions regarding the proposals or funding sources should presently contact Ms. Julia Leverenz in the Office of College Development. The recruitment of a replacement for Mr. Dennis Waller, former federal program officer within the Office of College Development, is currently underway.

Calendar

To schedule an event, contact the Campus Center Office, Ext. 4235 or 4236.

When a special program is planned for a meeting on campus, the William and Mary News welcomes further information about speakers, discussion topics, tickets and other details. Contact the News Office, 308 Old Rogers Hall, Ext. 4331 or 4371.

WEDNESDAY, SEPTEMBER 14

Faculty Luncheon Group, CC Green Room, 11 a.m.-1:30 p.m.
Project Plus Forum: "Architecture and the French Revolution," by Fine Arts Professor Richard K. Newman, Andrews Hall Auditorium, 7:30 p.m.

THURSDAY, SEPTEMBER 15

Center for Excellence, CC Rooms C & D, 9 a.m. - 3 p.m.
Va. Cartographic Workshop sponsored by Geology Dept., Campus Center, 9:30 a.m. - 3:30 p.m.
Episcopal Holy Communion, Wren Chapel, 5:30 p.m.
Special Programs Class: Yoga, Adair 202, 5:30 - 9:30 p.m.
Law Wives, CC Sit 'n Bull Room, 7 p.m.
Japanese landscape painting, with Nina Cox, Asia House, 7:30 p.m.

FRIDAY, SEPTEMBER 16

Panhel Rush, CC Ballroom, 7-11 a.m.
Sociology Dept. Keg Party, Lake Matoaka Shelter, 3 p.m. - midnight.
College Women's Club, Wren Great Hall, 4-6 p.m.
Field Hockey: Yale vs. W&M, Westhampton College vs. Dartford College (England), Barksdale Field, 4 p.m.
WMCF, CC Sit 'n Bull Room, 6-7:45 p.m.
S.A. Film Series: "Barry Lyndon" and "Sailor Who Fell from Grace with the Sea," W&M Hall, 7:30 p.m.
Folk Dancing Class, Adair Gym, 7:30 p.m.
Panhel Rush, Millington Auditorium, 8-9 p.m.

SATURDAY, SEPTEMBER 17

Panhel Rush, CC Ballroom, 7-11 a.m.
Third Va. International Pro-Am Karate Championship, Blow Gym, 7 a.m. - 9 p.m.
CPA Prep Program, Jones 302, 8 a.m. - 5 p.m.
Organ Recital, Wren Chapel, 11 a.m. Admission free.
College Music Society, Wren Chapel, 12-3:30 p.m.
Student Bar Association Picnic, Lake Matoaka Shelter, 12 noon - 8 p.m.
Soccer: Williamsburg Kiwanis Tourney - Georgetown, ODU, UVa, W&M; games at Cary Field, 1 p.m. and 3 p.m.
Field Hockey: Dartford vs. W&M and Yale vs. Westhampton College, 10 a.m.; W&M vs. Westhampton, 1:30 p.m.; Barksdale Field.

SUNDAY, SEPTEMBER 18

Panhel Rush, CC Lobby, 7-11 a.m.
Field Hockey: 10 a.m. - Yale vs. Richmond, 1:30 p.m. - Yale vs. Dartford, Barksdale Field.
Soccer: Williamsburg Kiwanis Tourney - Georgetown, ODU, UVa, W&M; games at Cary Field, 1 p.m. and 3 p.m.
Piano Recital, by Marion Perkins, Professor of Music at James Madison University, PBK Hall, 4 p.m. No admission charge.
Reception for entering graduate students, President's House, 4-6 p.m.
Baptist Student dinner and program, Baptist Student Union, 5 p.m.
Folk Dancing Class, Adair Gym, 7:30 p.m.

MONDAY, SEPTEMBER 19

Corporate Relations and Placement: "Students/Placement," Small 109, 3 p.m.
WMCF Folk Group, CC Sit 'n Bull Room, 7-10 p.m.
BSO, CC Theatre, 7 p.m.

TUESDAY, SEPTEMBER 20

Corporate Relations and Placement: "Resume/Letters," Morton Hall, 3 p.m.
Project Plus Film, Botetourt Theatre, 7 p.m.

WEDNESDAY, SEPTEMBER 21

Faculty Luncheon Group, CC Room D, 11

a.m. - 1:30 p.m.
Corporate Relations and Placement: "Interview Appointments," Small 109, 3 p.m.
Glee Club, CC Sit 'n Bull Room, 6 p.m.
Project Plus Forum: "Ten Days That Shook The World," (film) directed by Sergei Eisenstein, Millington Auditorium, 7:30 p.m.
Bird Study Group, Andrews 101, 7:30 p.m.

THURSDAY, SEPTEMBER 22

Corporate Relations and Placement: "Preparing for Interview," Morton 20, 3 p.m.
Episcopal Holy Communion, Wren Chapel, 5:30 p.m.
Special Programs Class: Yoga, Adair 202, 5:30-9:30 p.m.
College Republicans, CC Room D, 6:30 p.m.
Residence Hall Life CPR Training, CC Ballroom, 7 p.m.
State Department speaker on "India After Indira Ghandi," Asia House, 7:30 p.m.
Seminar in Applied Chemistry: Dr. James E. Hardwicke, President of Hardwicke Chemical Company, "The Entrepreneur, an Alternative Lifestyle," Millington Auditorium, 7:30 p.m. Public invited.
Concert Series: Misha Dichter, piano, PBK Hall, 8:15 p.m. Public invited. General admission is \$4.

FRIDAY, SEPTEMBER 23

Corporate Relations and Placement: "The Interview," Small 109, 3 p.m.
Seminar in Applied Chemistry: Dr. James E. Hardwicke, president of Hardwicke Chemical Company, "From Daisies to Synthetic Pyrethroids," Millington Auditorium, 3 p.m.
Music Dept. Reception, Wren Great Hall, 4 p.m.
Carpenter Shop & Painters Picnic, Lake Matoaka Shelter, 4-8 p.m.
WMCF, CC Sit 'n Bull Room, 6 p.m.
S.A. Film Series: "The Shootist" and "Walking Tall," W&M Hall, 7:30 p.m.
Folk Dancing Class, Adair Gym, 7:30 p.m.

CAREER PLANNING--Throughout the year, the Office of Career Planning will hold weekly career planning sessions to introduce students to career development processes and to orient them to career information and resource persons available for assistance. To attend, sign up with Betsy Blanchard in the Career Planning Office, 208 James Blair Hall.

GRADUATE SCHOOL EXAMS--Information on registration deadlines and testing dates for graduate school examinations given on campus is available in the Office of Career Planning or Psychological Services. Upcoming tests and their registration deadlines include: GRE test on Oct. 15, deadline Sept. 19; GRE test on Dec. 10, deadline Nov. 9; GMAT test on Nov. 5, deadline Oct. 14; LSAT test on Dec. 3, deadline Nov. 7.

Exhibits

FLOWERDEW HUNDRED--Archaeology Exhibit--17th and 18th century artifacts from the Flowerdew Hundred plantation site, Washington Hall, lower hall; 9 a.m.-5 p.m. weekdays. Permanent display.

VIRGINIA ARTIFACTS--Virginia Research Center for Archaeology, basement of Wren Building; 9 a.m.-5 p.m., Monday through Friday. Permanent display.

WATERCOLORS BY GARI MELCHERS--From the Virginia Museum collection, watercolor sketches by an American Impressionist. On display through September 16, upper level of Andrews Foyer. Open daily.

RECENT WORKS BY BERNARD MARTIN--A series of 17 drawings showing segments of a room, on display through September 16, lower level of Andrews Foyer. On loan from the Virginia Museum. Open daily.

BEAUTY UNDER FOOT--A selection of Persian rugs from the Virginia Museum collection. Andrews Gallery, through September 23. Weekdays, 10 a.m.-4 p.m.

PRINTS BY SALVADOR DALI--A collection of etchings by the Spanish painter, on loan from alumnus Richard W. Radebach Jr., class of 1974. Zollinger Museum, Swem Library, through October 29. Open weekdays, 8 a.m.-4:45 p.m.; Saturdays, 9 a.m.-12:45 p.m.

Published weekly by the Office of Information Services during the academic year, except when the College is in recess, and twice each month in June, July and August. Marjorie N. Healy, editor

Publications Office, production
News, photographs and advertisements should be sent to the News Office, 308 Old Rogers Hall.

The deadline for all submissions is Wednesday at 5 p.m. for publication the following Tuesday.

Personnel Bulletin

Employees' Days

As a token of the esteem and appreciation of the College community for our employees, the following dates have been designated as "Employees' Days" for football games at William and Mary:

October 1, 1977 -- Villanova
November 19, 1977 -- Richmond

A total of 100 complimentary tickets for each game will be issued to Permanent College employees who have an annual salary that does not exceed \$6,144 as of October 1, 1977. College employees with long service and retirees who fall within the stated salary limitation will be given preference. Eligible individuals may obtain the complimentary tickets by applying in person at the College Personnel Office.

Employees are advised that they may purchase additional tickets at reduced rates through the William and Mary box office.

Classifieds

All members of the College community may place personal advertisements in the William and Mary News.

The deadline for submitting advertisements is 4 p.m. on the Wednesday preceding publication. For a \$2 fee, each ad is run in three consecutive issues. Payment must be received before the ad can be printed.

Individual advertisements should be limited to not more than 40 words.

Advertisements for non-commercial announcements of goods, rentals and real estate, either offered or sought, and for lost and found items will be accepted.

Advertisements for profit-making business ventures, such as guitar lessons and babysitting services, can not be accepted.

There is no charge for listing found items.

FOR SALE

HOUSE, 3 BR, w/fenced-in yd., A/C, carpeted, new paint inside and out. 1194 Duncan Dr., Wmbg., \$26,250. Call 253-4541 days or 353-2609 evenings and weekends. (9/13)

1973 SUPER BEETLE VW, new engine, approx. 53,000 mi., major overhaul in May, #2 inspection sticker, body in good cond.,

\$1400 firm. Call 220-3533 during day or 253-0038 after 6 p.m. (9/13)

BICYCLE, "Zeus Alfa," man's 10-speed, excellent running cond., lightweight. \$110 or best offer. Call 229-7587. (9/13)

FREEZER, large upright, excellent cond., \$175; PING PONG table and equipment, \$10; YOUTH FURNITURE, \$75; OLD BICYCLE, as is, \$5. Call 229-5450 after 5 p.m. (9/13)

WEDDING gown, white, never worn. This year's style. Size 14, low neck, long sleeve. \$140. Call 877-6860 after 5:30 p.m. (9/13)

KINGSWOOD, building lot. 3/4 ac. wooded, city sewers, near pool, call owner at 253-0088. (9/13)

CHRIS CRAFT Cabin Cruiser, 27 ft., Chrysler 225, less than 500 hours, sleeps four to five, extras, call owner at 253-0088. (9/13)

DINETTE SET--six months old, was \$175, asking \$100. Call 220-2481. (9/20)

CONDOMINIUM at Barclay Square, 2 large BR's, 2 baths, many closets, deck, washer-dryer, large refrigerator, dishwasher, refrigerator storage and accessories. Unit for fireproof. Carpeting throughout. Great buy. Owner must sell. \$44,500. Call 229-5910. (9/27)

Women's 10-speed Schwinn Bicycle, excellent condition, \$65. (New-\$120).
Antique 3-piece Victorian living-room suite. Good condition but needs upholstery \$395. May be seen at 138 Berkeley Lane after 5 p.m. Call 229-7222. (9/27)

LOVE SEAT, fair condition; two expandable dining room tables, fair condition; four dining room chairs, poor condition. Call Sara, Ext. 4506. (9/27)

'73 DATSUN 240Z, silver, 4 speed, AC, new Semperit M401s, 21,000 miles, exc. cond., \$4100 firm. Call 229-7635 after 6 p.m. weekdays, anytime weekends. (9/27)

SOFA BED, 1 Congoleum art square (new), 1 metal tea wagon, assortment of wire, 1 lime spreader, iron railings for house steps. Call 229-3844 after 5 p.m. (9/27)

'71 MGB-GT, 55,000 miles. Needs some body work. \$1350 or best offer. Call 229-5782. (9/27)

FOR RENT

RETREAT of the Sangraal. New cedar lodge, 16 acre estate, waterfront. 4 fire places, 4 BRs, 3 baths. Gardens, orchard and nice forested area within commuting distance. Rent all or part with option to buy. Call Isabel Horsley, 758-2430. (9/13)

ROOM w/bath, kit. privileges in private home. Suitable for female graduate student with car. Nominal rent. Call 229-1998. (9/13)
APARTMENT--Village of Woodshire, 2 BR, 1 1/2 baths, dishwasher, excellent location in complex. Available Oct. 1. \$215. Call 229-0219 after 5 p.m. (9/27)

WANTED

BABYSITTER, full time. Prefer someone staying at home with own children who would add my infant to their home. Guaranteed 30-40 hours per week. Hours can be flexible. Inquire, call Cindy Null 220-1308 after 5 p.m. (9/13)

ROOMMATE to share 2-BR furn. apt. for the first semester. Contact Bill at 229-3142 after 2 p.m. (9/13)

DRIVING from Hampton for classes at W&M on Tues. 5:30-8:30, Wed. 5-8 and Thurs. 5:30-8:30. Anyone interested in forming car pool please call 851-7833 (in Hampton). Ask for Paula. (9/13)

STUDENT DESK. Also 3 or 10-speed men's bicycle. Call Bill, 229-4389. (9/20)

APARTMENT--Married Couple Needs unfurnished 1 bedroom or efficiency apt. within walking or biking distance of the Campus. Call 642-2105 (Gloucester). (9/27)