



William and Mary News

VOLUME VI, NUMBER 7
TUESDAY, OCTOBER 18, 1977

In the News

PRE-REGISTRATION FOR SPRING SEMESTER

Pre-registration for the spring semester for all undergraduates and for graduate students in Arts and Sciences will take place between October 20 and November 1. Undergraduate students should pick up their materials on October 20 at Andrews Hall between 8:30 a.m. and 4:30 p.m. Graduate students in Arts and Sciences should contact their advisors between October 20 and November 1.

GEORGETOWN PROFESSOR TO GIVE CLASSICS LECTURE

Elizabeth A. Fisher, associate professor of classics at Georgetown University, will present an illustrated lecture entitled "Sepulcher in the Sky: A Monument of Late Hellenistic Asia Minor," Friday, Oct. 21, at 4 p.m. in Room 20, Morton Hall.

Her talk, which is sponsored by the Classics Department, will focus on the Hellenistic monument of the Commagene kings, Nemrut Dag. The public is invited to attend.

VISITING SPEAKER TO READ WELSH POETRY

"Dylan Thomas Lived Here," a prose and poetry reading, will be given by Welsh actor Ray Handy, Tuesday, Oct. 25, at 8 p.m. in the Campus Center Little Theatre.

Following a tradition as timeless as Wales itself, the program gives a vivid, verbal picture of Wales and its poets. "Dylan Thomas Lived Here" begins at the death of Wilfred Owen and Edward Thomas during the 1914-1918 war, and ends with the death of Vernon Watkins in 1967. During this cataclysmic period Wales produced some of the finest poets in Britain, most notably Dylan Thomas.

Ray Handy has worked throughout Britain in theatres and on television and radio. He has performed with the Welsh National Opera and Drama Company and the Welsh Theatre Company and has written and produced several shows for British television.

Board Reviews Financial Picture

Members of the Board of Visitors, meeting October 13-15 on campus, heard reports on the College's financial operations for the fiscal year and on the facilities for the handicapped, approved a change in board by-laws, and approved the awarding of the 1977-78 J.D. Carneal Jr. Tax Scholarship.

See *Actions of the Board*, page 6.

Total revenues for 1976-77 for Educational and General, Student Aid, and State Auxiliary Enterprises amounted to \$24,642,950.

Total expenditures amounted to \$24,638,440.

Wesley Wilson, assistant to the president and in charge of overseeing College compliance with federal regulations concerning the handicapped, reported on steps that have been taken to accommodate the physically handicapped on campus and on the deadlines approaching for further changes. (See related story, page 2.)

Board members approved a change in by-laws, establishing the ad hoc Audit Committee and Committee on Personnel Policy as standing committees. The Audit Committee will consult with the internal auditor of the College who is responsible to the Board of Visitors, and to the President on

measures and procedures relating to the internal auditing function.

The Committee on Personnel Policy will advise the president on matters of personnel policy concerning both members of the faculty and classified personnel of the College.

Dennis D. Ashenfelter was chosen recipient of the J.D. Carneal Jr. Tax Scholarship. The \$795 scholarship is awarded annually to a student interested in studying for the Master of Law and Taxation degree at the Marshall-Wythe School of Law.

Ashenfelter holds a B.S. degree from Oregon State University and J.D. from the Willamette University College of Law, where he ranked 13th in a class of 99. While in law school he was a semi-finalist in a Moot Court competition, was awarded the American Jurisprudence Award, the Russell M. Brooks Scholarship, the Trustees' Scholarship and was Articles Editor of the law journal. He is currently a candidate for the Master of Law and Taxation degree at William and Mary.

In other matters, the board heard a report on the assets received and due from the estate of Jay Winston Johns. Johns, a long-time friend of the College who died in 1974, bequeathed to the College Ash Lawn, the Albemarle county home of President James Monroe, as well as other property and securities.

The total value of assets received from the estate through June 30, 1977, was \$1,442,337.25. The assets include securities, proceeds from the sale of Johns' residence, Ash Lawn property valued at \$473,600, the Ash Lawn gift shop inventory, antiques, paintings, furniture and various Monroe documents. An additional \$10,697.42 is due from the estate.

Income and profits on sales of investments totaled \$167,129.56 through June 30, 1977.

Operating and legal expenses, transfers and encumbrances of \$398,442.80 bring the total fund balance from the estate to \$1,221,721.43 as of June 30.

The Board also directed that an endowment fund in honor of Judge H. Lester Hooker be established to honor the wishes expressed by Mr. Johns in his will. During his lifetime Johns had established an endowment, the income from which was designated for the purchase of library material in the field of early American history. His gifts to the College during his lifetime and his bequest brings the total endowment to \$400,000. Of that, \$100,000 will be designated in honor of Judge Hooker, whom Johns' will cites as "a devoted alumnus of the College and an outstanding citizen of Virginia, whose services to the Commonwealth, particularly as a member of the State Corporation Commission, greatly deserve some recognition."

The Board also affirmed the status of William and Mary's campus police department as a police force with the same powers and duties conferred by law on the police forces of cities, towns and counties.

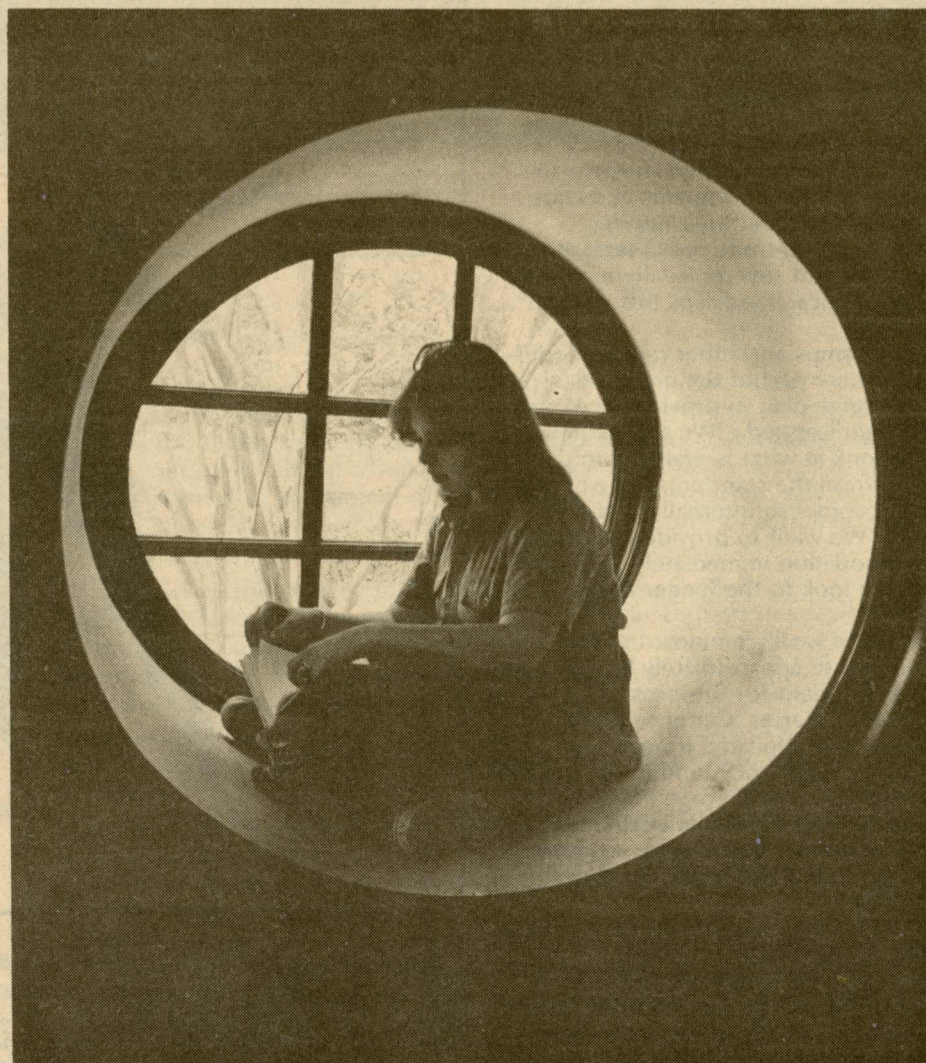
State legislation that became effective July 1 this year authorizes college and university governing boards to establish such campus police departments. The new legislation, Chapter 17 of Title 23 of the Code of Virginia, gives campus police a more precise identity, codifies authority previously implied, and recognizes them as equals among area law enforcement agencies.

Ethiopian Revolt Is Topic Of Wednesday Forum

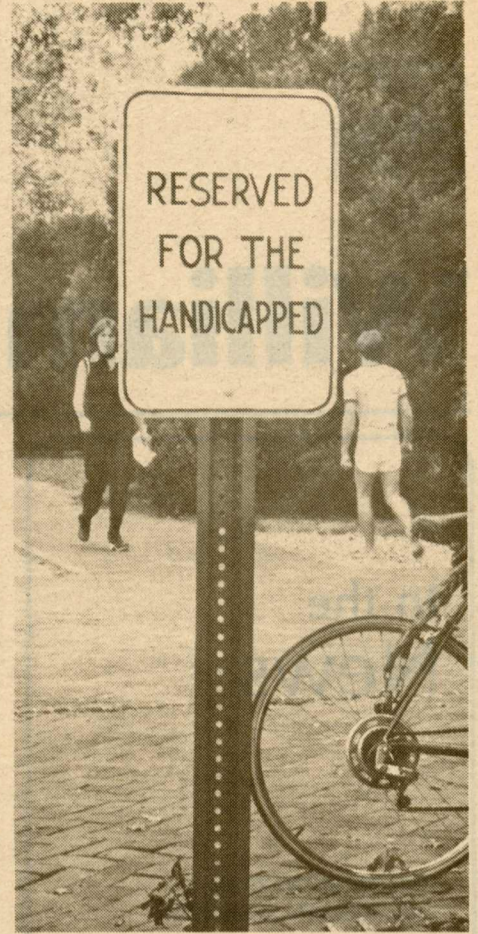
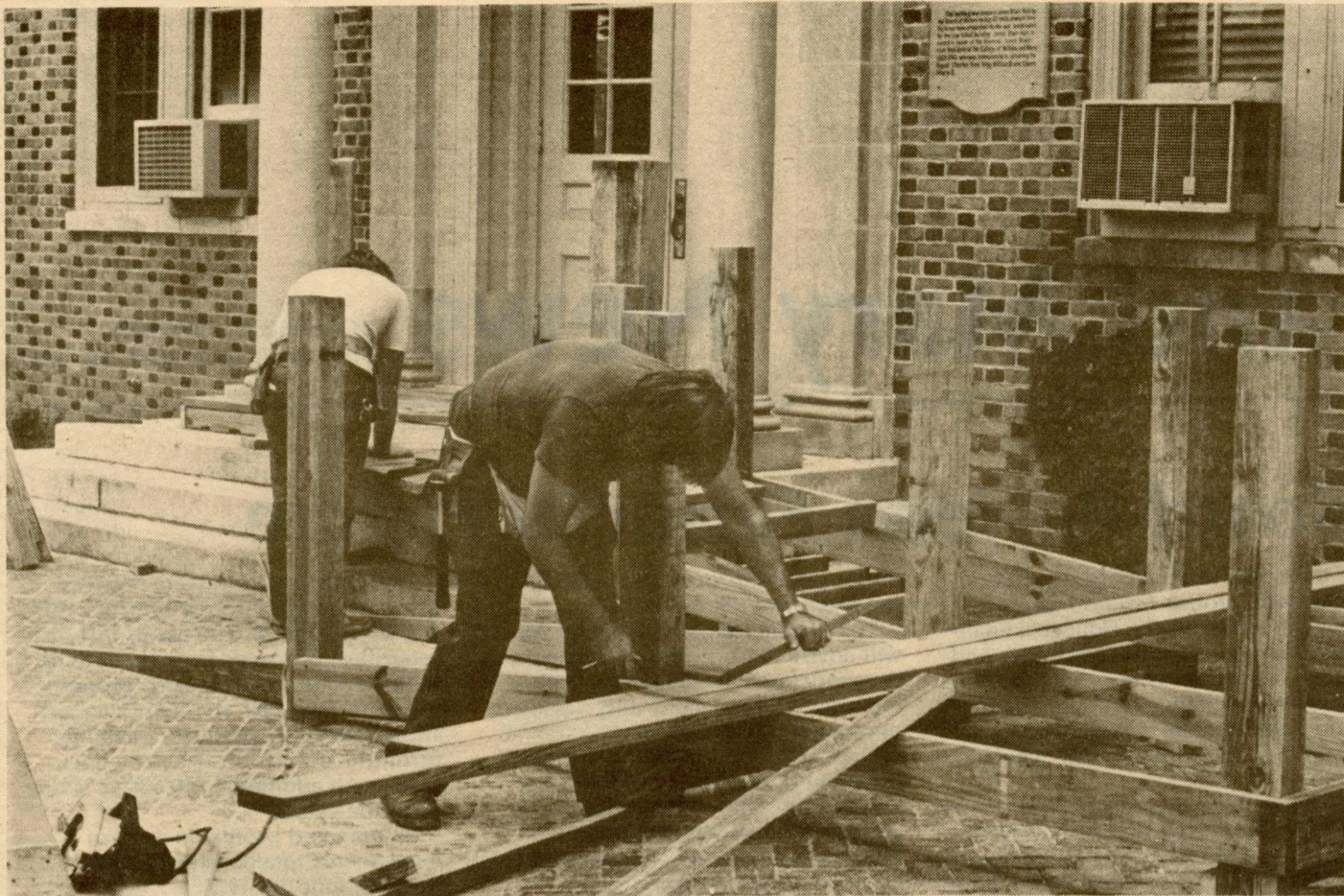
Foreign Service Officer Paul Sebastian will discuss "The Ethiopian Revolution in Political and Personal Terms" at the Project Plus Forum, Wednesday, Oct. 26. The public is invited to attend his lecture, which begins at 7:30 p.m. in Millington Hall auditorium.

Sebastian served as senior foreign service officer at Addis Abbaba, Ethiopia, from 1972 to 1976, during which the Ethiopian Revolution began. Sebastian has also served as deputy executive secretary of the State Department.

A native of Berlin, Germany, Sebastian graduated from the University of Chicago and the New School for Social Research.



A student finds the Great Hall of the Wren Building makes a secluded refuge for studying.



Carpenters complete work on wheel chair ramp outside James Blair Hall. A ramp has also been installed behind the Campus Center, and parking spaces have been reserved for the handicapped throughout campus.

Campus Changes Aimed At Helping Handicapped

Wheel chair ramps, curb cuts and parking spaces designated "reserved for handicapped" have begun appearing on campus as the university moves to make its educational programs and employment opportunities more accessible to handicapped persons.

Affirmative Action Officer Wesley Wilson is the compliance officer, responsible for implementing new regulations issued last spring by the Department of Health, Education and Welfare. The new provisions, outlined in the Rehabilitation Act of 1973, protect the right of the handicapped to equal opportunity in federally assisted programs.

An informal campus survey was conducted this spring by the Affirmative Action Advisory Committee at Wilson's request. The committee identified the buildings least accessible to the handicapped, Wilson said, and then matched them with those which receive the greatest use.

James Blair Hall, which houses most of the administrative offices, was consequently given high priority for modifications. Designated parking spaces, a curb cut and a wheel chair ramp now make the building reasonably accessible to the handicapped. Although there are no elevators in the building, Wilson said, "we felt that if the individual could get into the building, services could be provided."

Parking spaces have also been reserved and a ramp constructed at the rear of the Campus Center. Other parking spaces for the handicapped are being placed in strategic areas identified by the survey.

Because it is used so frequently for concerts, lectures and other public events, Phi Beta Kappa Hall is a building Wilson hopes to make more accessible "as soon as we can. It will probably be next on the list for ramps," Wilson said. "We felt it was more important initially, however, to deal with the buildings that affect the daily activity of students and employees."

He pointed out that William and Mary Hall, also the site of many events open to the public, is already accessible to those in wheel chairs through the ramp at the rear of the building. Parking spaces are being designated for the handicapped close to that

entrance to allow easy access, he said.

The College will respond to specific needs of handicapped students and employees as they become apparent. "We have to look at each person and try to accommodate them individually," Wilson said. To coordinate arrangements for the handicapped on campus, Wilson has set up a task force. Members include Susan Albert, associate dean for student development; James Connolly, assistant director of buildings and grounds; David Healy, director of auxiliary enterprises; David Kranbuehl, associate dean of the faculty of arts and sciences; and Betty Sandy, facilities coordinator.

Albert will assess needs of current and incoming handicapped students. Connolly and Healy will coordinate construction and housing requirements, and Kranbuehl and Sandy will work with handicapped students to adjust academic programs and class locations to meet their needs.

Wilson said there are at least ten students and several faculty members with physical handicaps this year on campus.

The ramps and other recent modifications are part of the university's long-range plan to provide access to the handicapped. "We are taking a new look at what is available to us now, from the standpoint of what we can accomplish internally," said Wilson. "We want to provide reasonable accommodation immediately, and then we can look to the longer-range needs."

Cost of work completed so far amounts to approximately \$5,000, said Vice President for Business Affairs William J. Carter. Carter said the money was allocated from a "very small" contingency fund in the budget administered by George R. Healy, vice president for academic affairs. "More will be done," Carter said, "as funds can be found and as we develop priorities."

The College has already taken initial steps to provide for housing for the physically handicapped. Facilities in five of the eleven old fraternity lodges have been modified to accommodate those in wheel chairs. Each lodge houses up to six students.

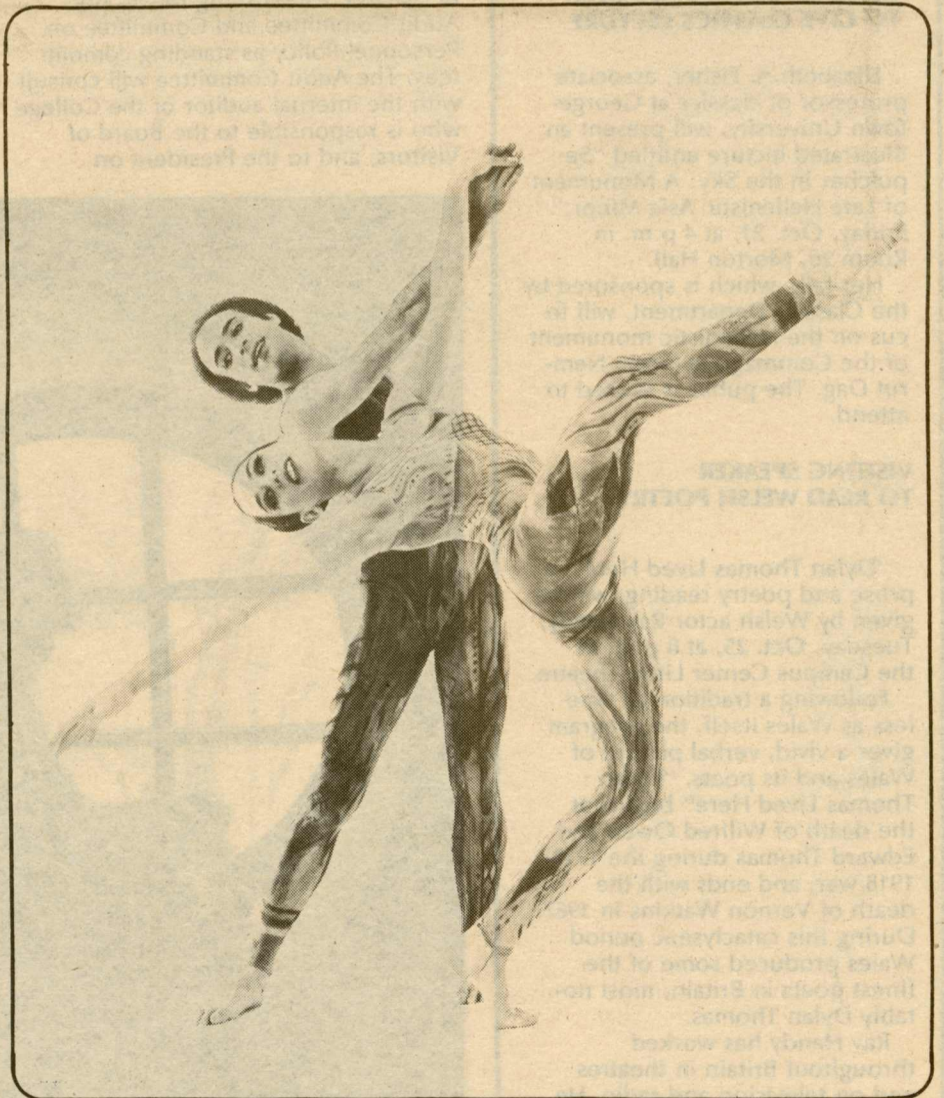
The College is currently preparing a transition plan, required by the new

HEW regulations, outlining any structural changes needed to provide accessibility to university programs for the handicapped. The plan must be completed by December 3 this year and the changes made by June 3, 1980.

Carter said College officials are working to determine whether and

how much it will be necessary to revise the capital outlay request submitted to the General Assembly to cover the cost of any needed structural changes.

"We intend to do all we can to remove barriers on campus to the handicapped, within the limits of our fiscal and physical resources," he said.



Jane Kosminsky and Bruce Becker are lead dancers in the 5 by 2 Plus Modern Dance Repertory Company, which will be in residence on campus October 23-25. The company will give a public performance Monday, Oct. 24, in Phi Beta Kappa Hall at 8:15 p.m. General admission tickets are \$3. Concert Series season ticket subscribers and College faculty, staff and students may purchase tickets for \$1.50. Tickets will be on sale Oct. 18 at the Phi Beta Kappa box office, following that evening's Concert Series performance by the Cleveland Quartet. Thereafter, tickets will be available at the office of the director of the Campus Center.

Exhibits

CHURCHES AND CATHEDRALS--A photographic exhibit of French religious architecture from the Romanesque to the Gothic period, sponsored by the Department of Modern Languages and the French House. On exhibit through Oct. 20, French House. Open to the public daily.

VIRGINIA ARTIFACTS--Virginia Research Center for Archaeology, basement of Wren Building; 9 a.m.-5 p.m., Monday through Friday. Permanent display.

FLOWERDEW HUNDRED--Archaeology Exhibit--17th and 18th century artifacts from the Flowerdew Hundred plantation site, Washington Hall, lower hall; 9 a.m.-5 p.m. weekdays. Permanent display.

PRINTS BY SALVADOR DALI--A collection of etchings by the Spanish painter, on loan from alumnus Richard W. Radebach Jr., class of 1974. Zollinger Museum, Swem Library, through October 29. Open weekdays, 8 a.m.-4:45 p.m.; Saturdays, 9 a.m.-12:45 p.m.

BERNARD CHAET--Still lifes, watercolors and paintings by a contemporary American painter and professor at Yale. Exhibit on loan from the Marilyn Pearl Gallery, New York. Andrews Gallery through Nov. 4. Open weekdays, 10 a.m.-4 p.m.

CHILDE HASSAM--Lithographs and etchings by the American Impressionist Childe Hassam. Foyer of Andrews Hall of Fine Arts, through Nov. 4. Open daily.

'Danceevent' Features Works By Faculty

"Danceevent," a program of original modern dance compositions by dance professors Carol Sherman and Shirley Roby, will be performed Saturday, October 22, in Phi Beta Kappa Hall at 8:15 p.m. There is no admission charge.

Members of the student dance troupe Orchesis and dancers from the community will perform in a program of solo and group works.

"Excursions," a dance choreographed by Ms. Roby, based on whimsical movement, will open the evening's program. It will be followed by two portraits created by Carol Sherman.

"Regal Portrait: Anne Boleyn" is a solo danced by Mrs. Sherman and accompanied by Cedric Tolley at the piano.

"Family Group" was inspired by the works of sculptor Henry Moore and the writings of Kahlil Gibran on the family, Mrs. Sherman said. "I was interested in doing a warm and positive comment on the cycle that a normal family goes through. So much is done on problems of the family that I hoped to find a way to depict a normal family relationship, as opposed to an emotionally fraught one," she said.

Miss Roby has taken a multi-media approach in creating "Environ's." Movement combines with visual pro-

jection and music, she said, to create a succession of environments in the dance.

Miss Roby's "Twice Danced" explores the spontaneity that occurs when the same choreography is adapted to two different styles of music, one contemporary and one baroque.

Mrs. Sherman has revised an earlier work for her solo performance in "Exile," which she describes as a comment on the minuscule steps of progress of a mentally ill person.

Mrs. Sherman's dance for three performers, "Mirages," is also a revision of an earlier work, in which she attempts to create fleeting images through dance.

The finale, "Space Place," choreographed by Mrs. Sherman, features twelve dancers. Movement ranges from "the intriguing to the absurd," she said. "I was interested in using a variety of familiar objects in unfamiliar ways to create a constantly moving environment."

Lighting design for the program was created by Roger Sherman, professor of theatre emeritus, with David Dudley as technical advisor and Chris Boll as production consultant.

Both Miss Roby and Mrs. Sherman have had extensive professional dance

experience.

Miss Roby has studied modern technique with Martha Graham and Jose Limon, dance composition with Louis Horst, and ballet with Alfredo Corvino and Fiorella Keene, among others. She has choreographed an 18th century dance suite performed for Colonial Williamsburg visitors with Mr. Scammon's Company of Players, for the CBS television special "A Christmas in Williamsburg," and numerous works for William and Mary Theatre productions.

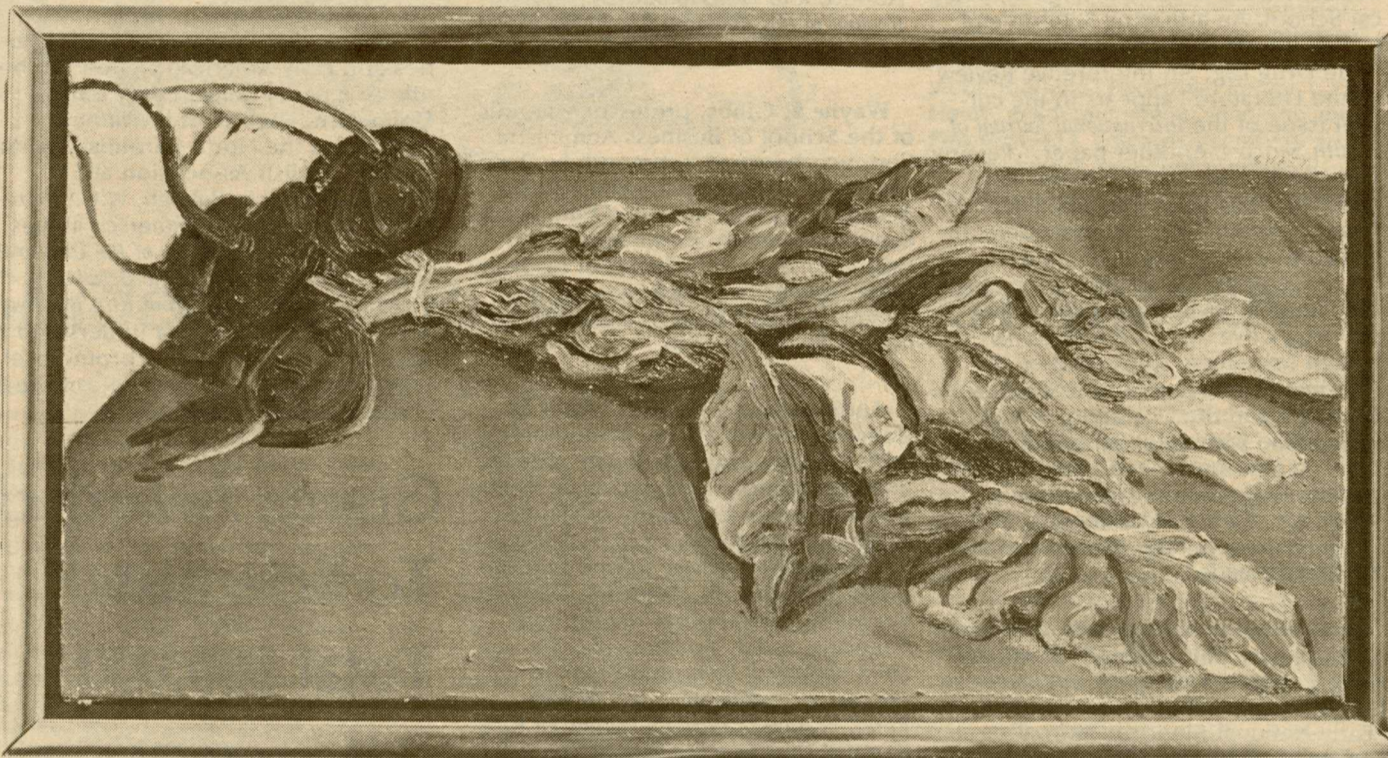
A graduate of Longwood College, Miss Roby holds an M.F.A. degree from the University of North Carolina at Greensboro.

Carol Sherman studied for several years in New York in the studios of Merce Cunningham and Martha Graham. She has also studied with Louis Horst, Alwin Nikolais, Helen Tamiris and others.

Prior to joining the William and Mary faculty in 1963, she taught at the North Carolina School of the Arts and the Washington Dance Theatre. She has also danced for several seasons with the Pauline Koner Dance Company and the Jeff Duncan Company.

In New York, her choreography has been produced by the American Choreographers' Workshop, Contemporary Dance Productions and Joseph Beinhorn.

She holds degrees from Hollins College and Sarah Lawrence College.



Bernard Chaet's "Beets," oil, 1974.

Yale Artist's Works On Display At Andrews Gallery

Still lifes, watercolors and paintings by Bernard Chaet are currently on exhibit at the Gallery in Andrews Hall of Fine Arts. The exhibition, which is on loan from the Marilyn Pearl Gallery, New York, is on display through November 4. Gallery hours are 10 a.m.-4 p.m. weekdays.

Chaet's recent work, from which the exhibit is taken, focuses on such commonplace subjects as kitchen utensils, foods and clothing. By means of color and spatial positioning, he makes the objects change their identities as they move from painting to painting. "They are like actors changing their roles," said Chaet.

Chaet has been a member of the art department at Yale University since 1951. During 1962-63 he was visiting artist at the American Academy in Rome.

He has had numerous one-man exhibitions and his works are exhibited in university and public museums throughout the East. Chaet is the author of two books on art, "Artists at Work" (1961) and "The Art of Drawing" (1971).

October 18, 1977

A message to the College Community:

Miss Barbara Logan, the William and Mary senior who was abducted and shot Friday morning, is still hospitalized and listed in serious condition. Chances for her survival and recovery now appear good. Last evening, the James City County Sheriff's Department arrested and charged a county man with the abduction and assault of this student. The investigation was a cooperative effort between the James City County Sheriff's Department, the William and Mary Campus Police and the Williamsburg Police.

The shock of this tragedy to the college community has been understandably great. The job of the Office of Student Affairs in keeping the campus accurately informed has been a complex one. We have had to be mindful of the sensitivities of the case, the privacy of the student, the wishes of her parents and the concerns of local law enforcement agencies.

We will continue to keep the campus community apprised of her condition, as information becomes available, with the consent of her parents.

Mr. and Mrs. Logan have asked that we convey to members of the college community their gratitude for the many expressions of concern and offers of assistance that have been extended to them since they arrived in Williamsburg.

The Campus Police and the Office of Student Affairs would like to take this opportunity to urge the members of the William and Mary community to continue to take the kind of measures we have always recommended to protect themselves and their friends.

W. Samuel Sadler
Dean of Students

Workshop Here Promises Ideas For Energy Savings

The Virginia Energy Office will sponsor a free Home Energy Cost-Cutting Clinic on Tuesday, Oct. 25, in Millington Hall Auditorium at 7:30 p.m. The public is invited to attend.

The hour-long program offers a practical approach for homeowners to saving energy. Instructors will explain how and when to add attic insulation, how to caulk and weatherstrip a house, how to add storm windows, when to insulate walls and how to hire a contractor.

The clinic will also include a discussion of night set-back thermostats and high efficiency furnaces, how to reduce energy use for hot water heating, and tax incentives which have been enacted or proposed for home insulation and storm window installation.

Arrangements for the program are being made through Thomas Nelson Community College with assistance from the American Association of University Women, James City County Energy Committee and VPI&SU Extension Division.

Information Session On Summer Study In Great Britain

Students interested in William and Mary's summer academic program at Christ's College, Cambridge, England, are urged to attend an informational meeting, Thursday, Oct. 20, in the Campus Center Sit'n Bull room at 4 p.m.

Courses will be offered from the College curriculum and taught by William and Mary professors with guest lecturers from Cambridge University. The session runs from July 19 to August 18, with opportunities for excursions and three-day weekends during the program.

Additional information is available in the office of Joseph Healey, associate dean for extramural programs, 207 James Blair Hall.

Newsmakers

The professional appointments, lectures, achievements and publications of William and Mary faculty and staff are featured regularly in this column.

Faculty members in all schools and departments and professional staff in all offices are invited to submit written notices of appropriate professional activities to the News Office, 308 Old Chemistry Building.

It is the policy of the William and Mary News to include only activities of a professional capacity to an audience directly related to the speaker's field of expertise. Attendance at conferences will be included only if a faculty member or administrator has contributed to the program in a significant way, such as delivering a paper or address, or chairing a session.

Phillip E. Downs, School of Business Administration, **Sarah Bane**, president of the M.B.A. Association, and **William D. Binion**, editor of the William and Mary Business Review, have written a case entitled "Marketing a Non-Traditional Product: The Football and Basketball Programs of the College of William and Mary," which will be published in *Marketing Management: Strategies and Cases*. The text, edited by M. Wayne Rehozier and Arch G. Woodside of the University of South Carolina, will be published by Charles E. Merrill Publishing Company and will be available in March 1978.

Alan Abramowitz, government, has been invited to attend the conference on congressional election research sponsored by the Board of Overseers of the National Election Studies at the University of Rochester this month. Abramowitz's article, "The Impact of a Presidential Debate on Voter Rationality," will be published in the *American Journal of Political Science*.

Gary A. Kreps, on research leave with the Committee on International Disaster Assistance, National Research Council of the National Academy of Sciences, has continued his work with that organization through this semester. In January 1978, Kreps will return to the College to resume full time teaching in sociology.

In January 1977 "An Application of Compliance Theory to the Study of Juvenile Delinquency" by **Gary Kreps**, **Charles Thomas** and **Robin Cagle** was published in *Sociology and Social Research*.

Kreps also published "The Organization of Disaster Response: Some Fundamental Theoretical Issues" in E.L. Quarantelli (Ed.) *Disasters: Theory and Research* (London: Sage Publications, 1977). Kreps served as discussant in a section on disaster behavior at the 1977 meetings of the American Sociological Association in Chicago in September.

In the history department, **Thomas Sheppard's** review of H. Van Der Wee & K. Tavernier, *La Banque Nationale de Belgique et l'Histoire Monétaire entre les Deux Guerres Mondiales* (Brussels, 1975) appeared in the Summer 1977 issue of *Business History Review*.

Len Schifrin, economics, recently was appointed by Secretary of Health, Education and Welfare Joseph A. Califano, Jr., to serve a two-year term on the Pharmaceutical Reimbursement Advisory Committee of the Department of HEW. This committee is within the Health Care Financing Administration of the Department, and holds hearings and makes recommendations to the Secretary and others in HEW regarding payment prices for drugs under health programs funded by the Federal government. The most recent meeting of the Advisory Committee was September 28-30 in Washington, D.C.

Faculty Club Party Set

The Faculty Club will hold its second cocktail party of the year on Friday, Oct. 28, from 5:30 to 7:30 p.m. The party will be held in the Greenhouse-Display area on the top floor of Millington Hall. The greenhouse contains many interesting species and varieties of plants which are labeled, as well as many which have a short commentary concerning the species. The display area contains live snakes, turtles, rats, arthropods and aquatic organisms as well as permanent displays and photographs. This will undoubtedly prove to be an entertaining evening and one you will not want to miss.

All members of the faculty and administration are invited to attend and may pay at the door or pay in advance to Lewis Foster at the usual rates: members \$2.50 per person (\$1.50 non-drinkers) and non-members \$4 per person (\$2.50 non-drinkers). Set aside October 28 on your calendar and join in the fun.

In other activities, Schifrin recently presented a paper on "The Interface Between Health Care Financing and Health Care Delivery Under National Health Insurance" to the *Medicine and Society Forum* at Eastern Virginia Medical School. An article by Schifrin and Jack B. Tayan of Stanford University on "The Drug Lag: An Interpretive Review of the Literature" appears in the current issue of the *International Journal of Health Services*. Another paper, "Poverty and Health Care: An Economic Perspective," has been published in *Social Issues in Health Care*, a compendium of selected recent symposium papers.

On October 5-7, Schifrin attended the National Invitational Conference on Drug Coverage Under National Health Insurance, sponsored by the National Council on Health Services Research and the University of California (San Francisco) School of Medicine. At the conference held in Washington, D.C., Schifrin presented a paper on "Cost Containment Under Drug Insurance: Policy Directions and Research Needs."

Drew McCoy, history, will participate in Duquesne University's 11th annual History Forum, Oct. 20-22 in Pittsburgh, Pa. He will present a session on "Early National America: Journalists and Political Economy."

Carl M. Andersen, senior research associate in the department of mathematics and computer science, has just published a paper entitled "Mixed Isoparametric Finite Element Models of Laminated Composite Shells." The paper is co-authored by Ahmed K. Noor of the George Washington University Center of NASA-Langley Research Center and appeared in the journal *Computer Methods in Applied Mechanics and Engineering*.

A review by **Frank B. Evans**, professor of English emeritus, of a recent book on Joseph Conrad's views on ships and the sea, appears in the October issue of *Conradiana*.

In the chemistry department, **Melvyn D. Schiavelli** has spent the past year teaching and conducting research while on an exchange program at the University of Aberdeen, Scotland. He participated in research seminars at a number of universities, including Oxford; Cambridge; Tubingen, Germany; Utrecht, The Netherlands; Zagreb, Yugoslavia; Padova, Italy, and Aberdeen, Scotland.

Schiavelli also published three articles during that time: "Solvolysis of Haloallenes. The Question of Nucleophilic Solvent Assistance," with T.C. Germroth and J.W. Stubbs in the *Journal of Organic Chemistry*; "Preparation of Allenyl Esters," with D.G. Oelberg in the *Journal of Organic Chemistry*; and "Solvolysis of Haloallenes. The Effect of Added Salts on the Polarimetric and Titrimetric Rates of Solvolysis of 1-Bromo-3-methyl-1, 2-pentadiene," with D. Scheffel, P.J. Abbott, and G.J. Fitzpatrick, in the *Journal of the American Chemistry Society*.

Wayne F. Gibbs, professor emeritus of the School of Business Administration, was honored last month by the American Institute of Certified Public Accountants, who awarded him a certificate of honorary membership in recognition and appreciation of his many contributions to the accounting profession. Gibbs has been a member of the AICPA for 40 years.

Anthropology professor **Mario D. Zamora's** review article, co-authored with J. Hicks, entitled "Japan: Change and Persistence," will appear in *Anthropological Forum*, University of Western Australia. His review of M.N. Srinivas' *The Remembered Village* will be published in *Anthropos*, St. Augustin, West Germany, and another review on R. Fogelson and R. Adams (eds.) *The Anthropology of Power* has been accepted for publication in *L'Homme*, Paris, France. Zamora's review of P. Karan's *The Changing Face of Tibet* was published in the July issue of *Contemporary Sociology*, American Sociological Association.

Kevin Geoffroy, School of Education, will present two sessions, "Group Counseling for Career Education" and "Behavioral Group Counseling" at the Group Skills Symposium to be held at the 1776 Inn, Williamsburg, Nov. 4-5. The symposium will be aimed at providing opportunities for professional development among counselors, teachers, mental health workers, community agency personnel, and social workers. Geoffroy will address a model for classroom group guidance to develop job application skills in his first presentation and discuss behavior reinforcement techniques aimed at eliminating inappropriate and developing appropriate group behavior in the second session.

Clifton C. Conrad, School of Education, recently co-authored an article entitled "Improving Academic Advising Through Computerization." The article appears in the fall issue of *College and University*.

Elmer Schaefer, School of Law, delivered a lecture on "Anti-Trust for Lawyers in General Practice," at a symposium recently held in Charlottesville by the joint committee on continuing legal education of the Virginia State Bar and the Virginia Bar Association.

Harvey Frank, professor of law, testified before the Securities and Exchange Commission last week at public hearings reexamining federal proxy rules on voting in public corporations. In his prepared text, Frank recommended that a shareholder's nominee for director be listed in company proxy material, and that cumulative voting be mandatory.

Scott Whitney, professor of law, delivered a paper in New Orleans last week to the International Sanitary Supply Association, on the need to simplify and improve government regulation of hazardous and toxic substances and pesticides. He suggested specific legislative and administrative reforms, to an audience of more than 6,000 registrants.

Nat Elliott, Terry Meyers, and Terry Tyler, English, attended the annual meeting of the Victorians Institute at Wake Forest University. Professors Elliott and Meyers were elected to second terms as president and vice president, respectively. Professor Meyers has also become an associate editor of the *Victorians Institute Journal*.

"William Byrd's Dividing Line Histories and Early American Fiction" is the title of a paper delivered by **Carl Dolmetsch**, English, at the annual meeting of the North Carolina-Virginia College English Association at St. Mary's College in Raleigh, N.C., October 8. In his paper Dolmetsch argues that Byrd's *Secret History of the Line and History of the Dividing Line Betwixt Virginia and North Carolina Run the Year of Our Lord 1728* are best understood if approached as drafts of a proto-novel rather than, as is customary, as factual chronicles of an actual event.

Grants Awarded To Scientists Total \$60,000

Grants of over \$60,000 have been awarded to scientists here in recent weeks.

Physics professors W. J. Kossler and Kenneth J. Petzinger are conducting research on Positive Muon Precession in Solids with a \$50,800 grant from the National Science Foundation. Positive muons, Kossler explained, are light elementary particles similar to protons, that can provide information about the magnetic fields and magnetic field distributions in solids. Understanding magnetic fields can help scientists understand more about the solids themselves, Kossler said.

The grant is a continuation of a previous NSF award of \$35,000 for research on positive muons. The research is being conducted at the Space Radiation Effects Laboratory, which also receives NSF support.

A second NSF grant, for \$4,400, has been awarded to Hans von Baeyer, chairman of the physics department, for support of the 16th annual Eastern Theoretical Physics Conference, to be held in Williamsburg, Nov. 4-5.

Chemistry professor David Kranbuehl has received two grants. A \$3,086 grant from the National Aeronautics and Space Administration (NASA) is a supplement to a previous grant to study high performance polymers for use in air and space vehicles.

The National Bureau of Standards has provided \$2,200 in funding to support Kranbuehl's work simulating on a computer the dynamic properties of polymers.



Betsy Tolley

College Committee Chairmen Named For Current Year

The membership list for committees of the College for 1977-78 has been completed. The committees and their chairmen are listed below. A full listing of committee members is available upon request from the Office of the Vice President for Academic Affairs.

Admissions Policy, D.J. Baxter, government; **Affirmative Action**, S. Ito, sociology; **Athletic Policy**, L.S. Beckhouse, sociology; **Campus Facilities Policy and Scheduling**, J.E. Donaldson, law; **Concerts**, K.E. Smith, student affairs; **Discipline**, R.E. Walck, law; **Environment**, G. H. Johnson, geology; **Faculty Hearing**, D. H. Jones, philosophy; **Faculty Housing**, R.C. Wheeler, education; **Faculty Liaison with the Board of Visitors**, R. Welsh, physics; **Faculty Research**, F. L. Gross, physics; **Ferguson Seminar**, W. P. Wenska, English; **Food Service Advisory**, J. J. Thompson, history; **Graduate Council**, G. R. Healy, academic affairs; **Honorary Degrees Advisory**, G. R. Healy, academic affairs; **Information Systems Advisory**, W. G. Poole Jr., mathematics and computer science; **Lectures**, R. M. Cox, modern languages; **Orientation**, S. J. Albert, student affairs; **Personnel Policy**, G. R. Healy, academic affairs; **Planning and Priorities**, J.D. Edwards, faculty of arts and sciences; **President's Advisory Council**, G. R. Healy, academic affairs;

Prizes and Awards, J. L. McKnight, physics; **Procedural Review**, J.S. Kerner, sociology; **Psychological Counseling Center**, B. W. Coursen, biology; **Research on Animal Subjects**, H. E. Schone, physics; **Research on Human Subjects**, R. C. Brown, law; **Residency Status Appeals Board**, B.R. Powell, law; **Space Allocation**, G.R. Healy, academic affairs; **Special Events: Faculty Marshalls**, R. W. Kernodle, chief marshal, sociology, **Charter Day Convocation**, R. Weeks, information services, **Commencement**, J.S. Kelly, assistant to the president, **Homecoming**, G.C. Vliet, alumni office, **Parents' Day**, K. Aulenbach, admissions, and **Spring Honors Convocation**, K. E. Smith, student affairs; **Special Programs Advisory**, W.J. Maddocks, business; **Student Aid and Placement**, D.J. Messmer, business; **Student Health Services Advisory**, M.A. Byrd, biology; **Transportation Appeals Council**, K.F. Bick, geology; and **Transportation Control Board**, L.A. Foster, philosophy.

Board of Student Affairs

Members of the Board of Student Affairs for the current academic year include:

Students--Harold L. Anderson, graduate student, business administration, Weslee E. Frawley, senior class representative; Carl T. Miller, graduate student, law; William C. Mims, representative at large; Maryanne B. Nelson, representative at large; Amy F. Scarr, sophomore class representative; Robert A. Schoumacher, representative at large; Steven R. Thode, representative at large; Avery T. Waterman Jr., junior class representative; David A. Nass Jr., president of the Student Association, ex officio member; Anthony Lancillo, graduate student, arts and sciences; James Meath, graduate student in education.

Administration--D.G. Healy, director, Auxiliary Enterprises; J. C. Livingston,

Continued on page 7.

Student Combines Ballet With Studies

Most students have enough trouble stuffing books into their knapsack, let alone a leotard and ballet shoes.

But eighteen-year-old Betsy Tolley manages to fit them all into her satchel and schedule; she has chosen William and Mary as her university and professional ballet as her career goal.

Betsy had already studied with both the Dayton, Ohio, Ballet Company and the Royal Ballet School of London when she enrolled this fall as a freshman. She now practices four hours a day, five days a week with the Peninsula Ballet Company in Newport News, while acquiring a liberal arts education with an emphasis in modern languages.

From an Air Force family, Betsy has moved almost every three years. Her father, Lt. Col. C.P. Tolley, was stationed at Langley AFB six years ago, and Betsy's memories of the area influenced her decision to attend William and Mary. Her family is now in England.

Betsy took the frequent moves in stride and pursued dance wherever the family settled. She started lessons at the age of five, but didn't take her ballet studies seriously until the family moved to Dayton and she was accepted into the ballet school there. Even when her family was transferred to a remote base in Mildenhall, England, Betsy was able to continue lessons by commuting to a Cambridge ballet school. Her diligence was rewarded when she was accepted to study with the Royal Ballet School. Over 300 dancers applied and 30 were selected.

The Royal Ballet School involved a year of intensive, fulltime training. While earning her high school diploma through correspondence courses, Betsy attended dance classes five days a week. In addition to actual performance training, Betsy listened to lectures by choreographers, stage managers, and other members of the ballet crew. She was required to take a music appreciation course and to learn Benesh Notation, the choreographer's shorthand. And for something a little

different, Betsy added an English course to her already crowded schedule.

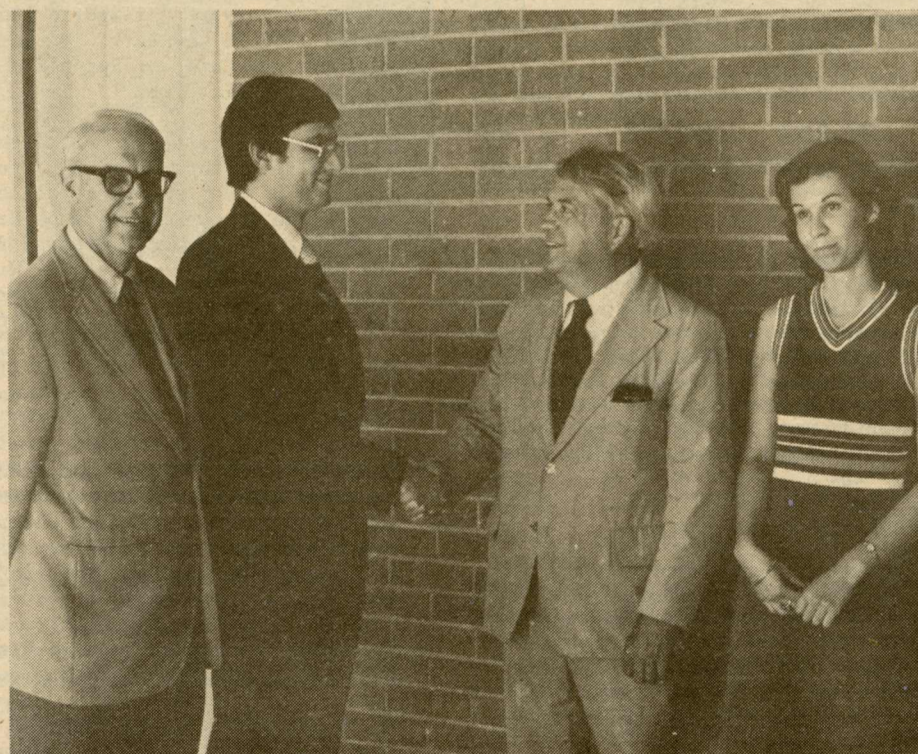
In some respects, the frequent moves have helped Betsy develop a well-rounded technique. "Each instructor you have has a different style, or stresses a different part of dance, different movements," she explained. "Because I didn't have just one particular style taught to me, it's made it easier for me to adapt to different types of choreography."

Betsy became convinced of the importance of an education in foreign language when she travelled through Europe during her overseas stay. She hopes someday to employ her university education as an interpreter or by working with a large company where she could travel. "Whatever I do, I

want to be able to travel," she said.

Betsy is optimistic about the state of ballet in America today. The rise in popularity of ballet-type exercises, such as slimnastics, have increased the public's awareness of the art, she said. Ballet has increasingly become recognized for more than its pure art form -- from football and boxing coaches to mothers of graceless children, ballet is being encouraged to improve motor coordination. She pointed out that the U.S., with its two hundred regional dance companies, provides greater opportunity for the young dancer to break into the field than is possible in Europe.

Betsy will make her debut with the Peninsula Ballet Company this month in the Coliseum Mall, Hampton, as part of an Arts Festival Week.



UVB-Williamsburg president Robert Walker congratulates MBA student Raymond Johnson, who was chosen recipient of the annual UVB scholarship award, as Charles Quittmeyer, dean of the School of Business Administration, and Linda Allen, last year's winner, look on.

UVB Awards Scholarship To Ray Johnson

Raymond Johnson, a graduate student in the School of Business Administration, has been awarded the fourth annual United Virginia Bank of Williamsburg scholarship.

Based on academic performance, the scholarship is awarded annually to a Virginia first year student in William and Mary's M.B.A. program who is interested in pursuing a career in finance and banking in Virginia. UVB first established the award in 1974.

The \$1500 scholarship covers two years of academic work. In addition, UVB of Williamsburg will employ Johnson part-time during the academic year and full-time next summer in a training capacity. The program is intended to provide recipients with practical exposure to all banking positions.

A native of Suffolk, Va., Johnson is a graduate of the McIntire School of Commerce at the University of Virginia. Prior to enrolling in the master's program here, Johnson served as marketing assistant at a Wilson, N.C., bank and trust company and was assistant manager for a Hampton finance company.

Second year M.B.A. student Linda Irwin Allen, last year's scholarship winner, will continue to receive the award for the 1977-78 academic session. The Richmond native is a graduate of Ohio Wesleyan University.

Actions of the Board of Visitors, Oct. 13-15

RECEIPT OF THE FINANCIAL OPERATING REPORT OF
THE COLLEGE OF WILLIAM AND MARY IN VIRGINIA
FOR THE FISCAL YEAR ENDED JUNE 30, 1977

The Financial Operating Report of the College of William and Mary in Virginia for the fiscal year ended June 30, 1977 has been presented by the Vice President for Business Affairs to the President of the College and is herewith presented to the Board of Visitors.

The statements included in this Financial Operating Report provide a concise,

comparative analysis of the College's financial affairs for 1976-77. The final summarized financial report for 1976-77 is being prepared and will be presented to the December meeting of the Board of Visitors. That report is subject, of course, to a detailed audit to be directed by the State Auditor of Public Accounts.

RESOLVED, That the Financial Operating Report for 1976-77 of the College of William and Mary in Virginia is hereby officially received by the Board of Visitors, subject to any adjustments found necessary, which will be reported and reflected in the final annual financial report, and subject to any adjustments found necessary by the State Auditor of Public Accounts.

OPERATING REPORT
SUMMARY STATEMENT OF CURRENT FUND REVENUES AND EXPENDITURES
JUNE 30, 1977

	1974-75 Actual	1975-76 Actual	1976-77 Actual
EDUCATIONAL AND GENERAL:			
Total Revenues	\$15,801,525	17,168,119	18,580,302
Total Expenditures	15,801,525	17,168,082	18,670,324
Unexpended Revenues	\$ -0-	37	(90,022)
STUDENT AID:			
Total Revenues	\$ 819,233	1,032,309	1,225,677
Total Expenditures	819,233	1,032,309	1,225,677
Unexpended Revenues	\$ -0-	-0-	-0-
STATE AUXILIARY ENTERPRISES:			
Total Revenues	\$ 3,871,915	4,554,238	4,836,971
Total Expenditures	3,872,212	4,051,870	4,742,439
Unexpended Revenues	(297)	502,368	94,532
COMBINED REVENUES			
Educational and General	\$15,801,525	17,168,119	18,580,302
Student Aid	819,233	1,032,309	1,225,677
State Auxiliary Enterprises	3,871,915	4,554,238	4,836,971
TOTAL REVENUES	\$20,492,673	22,754,666	24,642,950
COMBINED EXPENDITURES			
Educational and General	\$15,801,525	17,168,082	18,670,324
Student Aid	819,233	1,032,309	1,225,677
State Auxiliary Enterprises	3,872,212	4,051,870	4,742,439
TOTAL EXPENDITURES	\$20,492,970	22,252,261	24,638,440

OPERATING REPORT
SUMMARY STATEMENT OF STATE AUXILIARY ENTERPRISES
JUNE 30, 1977

	1974-75 Actual	1975-76 Actual	1976-77 Actual
REVENUES:			
Student Food Services	\$1,099,162	1,263,522	1,392,238
Student Residences	2,311,188	2,367,350	2,594,667
Faculty and Staff Housing	118,526	115,691	97,022
Laundry	10,125	-0-	-0-
Student Health Services	345,062	445,537	440,954
Campus Center	28,331	24,759	25,676
William and Mary Hall	-0-	110,667	135,062
Campus Parking	14,083	16,077	18,127
Post Office Box Rent	9,952	11,479	10,847
Student Bus Service	-	-	95,879
General Auxiliary Enterprises			
Services - Unallocated	(64,514)	199,156	26,499
TOTAL REVENUES	3,871,915	4,554,238	4,836,971
EXPENDITURES:			
Student Food Services	1,099,162	1,263,522	1,392,238
Student Residences	2,311,188	2,165,046	2,594,667
Faculty and Staff Housing	118,526	115,691	97,022
Laundry	10,125	-0-	-0-
Student Health Services	304,880	372,185	393,346
Campus Center	28,331	24,759	25,676
William and Mary Hall	-0-	110,667	135,062
Post Office	-0-	-0-	-0-
Student Bus Service	-0-	-0-	95,879
Campus Parking	-0-	-0-	8,549
TOTAL EXPENDITURES	3,872,212	4,051,870	4,742,439
Unexpended Balance	-0-	-0-	-0-
Transfer to (from) Renewal and Replacement Funds	(297)	502,368	94,532
Transfer to Plant Funds for:			
Renovation:			
Taliaferro	-0-	-0-	34,820
Eryan Hall Basement	-0-	177,812	-0-
Landscaping: Botetourt	-0-	-0-	20,000
Transfer to Plant Funds for Campus Parking	-0-	-0-	32,000

OPERATING REPORT
STATEMENT OF UNRESTRICTED APPROPRIATED FUNDS FOR EDUCATIONAL AND GENERAL
JUNE 30, 1977

	1975-76 Actual	1976-77 Actual
REVENUES:		
Special Funds Appropriations		
Student Fees	6,518,726	6,448,761
Organized Activities Related to Instructional Depts.	35,691	34,385
Sales and Services to Educational Departments	4,441	6,266
Other Educational and General Income	122,511	135,577
Public Service Income	100,814	95,179
Indirect Cost Reimbursement on Grants and Contracts	33,435	98,240
Total Special Funds Appropriations	6,815,618	6,818,408
General Funds Appropriations	9,140,357	10,429,481
Student Work Study Program - Federal Government	39,891	37,227
TOTAL REVENUES	15,995,866	17,285,116
EXPENDITURES:		
General Academic Instruction	8,112,953	8,893,779
Summer Session Instruction	357,907	394,638
Research	111,367	120,046
Public Service	144,676	140,348
Libraries	1,401,877	1,508,592
Audio Visual Services	76,017	108,279
Ancillary Support	46,309	50,150
Academic Administration	443,190	548,181
Student Services	861,281	906,371
Institutional Support	2,171,386	2,023,356
Operation and Maintenance of Plant	2,268,866	2,714,240
Working Capital Recoveries	-0-	(32,842)
TOTAL EXPENDITURES	15,995,829	17,375,138
Unexpended Revenues	37	(90,022)

IN MEMORIAM
Professor Colin Park

Professor Colin Park died on September 24, 1977, in New York City at the age of 59 years. A graduate of Ridley College in Canada, he obtained the M.B.A. degree from the University of Buffalo in 1950 and the Ph.D. from the University of Chicago in 1955. He became a certified public accountant in 1948 in New York. He had a distinguished career during World War II first in the Corps of Engineers and subsequently as a pilot in the United States Army Air Force.

He served on the faculty of the School of Business Administration of the University of Buffalo as Director of the Executive Development Program and Chairman of the Department of Accounting from 1949 to 1956. He was a partner of the accounting firm of Haskins and Sells where he had charge of the professional education program from 1966 to 1973. He served as a member of the board of directors of the William and Mary School of Business Administration Sponsors, Inc. from February, 1970 to April, 1973. He also was the editor of the N.A.S.B.A. Newsletter.

Professor Colin Park came to William and Mary in September of 1973, and distinguished himself as a vigorous teacher and mold of future business executives.

Among Professor Park's many scholarly contributions to the advancement of business administration were his innovative study on flow-of-funds analysis, published by Prentice-Hall under the title of Working Capital in 1963, which was translated into Spanish in 1966, and his last work just prior to his death entitled Management Braining, published in 1977 by Wailiker Publishers, Inc.

THEREFORE, In recognition of his professional accomplishments and of his devotion to the School of Business Administration and this College,

BE IT RESOLVED, By the Board of Visitors of the College of William and Mary, that the contributions of Professor Park be recognized with deep appreciation and that this memorial become a part of the permanent minutes of the Board.

Presidential Aide Is Guest On WCWM 1976 Debate Re-Cap

A special telephone hook-up with the White House will be part of an hour-long program October 23 on campus radio station WCWM FM-89, marking the first anniversary of the 1976 Presidential Debate held last October 22 in Phi Beta Kappa Hall.

Barry Jagoda, special assistant to President Carter for media affairs, will join, via telephone, studio guests who will reflect on their participation in the 1976 debate, on the Monty Griffith-Mair Show at 9 p.m. Guests include Sarah Kranbuehl, past president of the Williamsburg Area League of Women Voters; Wilford Kale, Williamsburg bureau chief for the Richmond Times-Dispatch; and Liz Tradenick, WCWM News Director.

Host Griffith-Mair will also play excerpts from interviews taped with CBS News correspondent Roger Mudd, Secret Service agents and key presidential aides who were involved with last year's debate.



Residents of Kingsmill on the James recently received two special tours of the campus conducted by the Office of Information Services. The three-hour tour included stops at the Sir Christopher Wren Building, Flowerdew Hundred Exhibit, Crim Dell, Millington Hall Greenhouse, Swem Library, Andrews Hall, Phi Beta Kappa Auditorium, and the Alumni House. The tours, which were co-sponsored by the Society for the Alumni, were conducted by Information Service staff members Lisa Liberati, Jim Rees, and Caroline Frechette, and by Gordon Vliet, executive vice president of the Society for the Alumni.

College Committees

Continued from page 5

dean of the Undergraduate Program; and W. Samuel Sadler, dean of students.

Faculty--A.I. Abramowitz, arts and sciences; E. Belgum, B.W. Coursen, and J.B. Delos; business administration, K.A. Emden; education, W.F. Losito; and law, D. Rendleman.

Publications Council

Members of the Publications Council include:

Students--Philip Grove '78; Elaine Kransky, law; Laura Lahs '79; Nancy Rasmussen '78; and Kevin A. Rossiter '79, who is chairman of the council.

Other members are B.S. Ball, news office; E.L. Looney, student aid; K.E. Smith (ex officio), student affairs; E. Fischer, law; N.Y. Elliott, English; and Will Molineux, Williamsburg bureau chief for the Daily Press, community representative.

Employment

The following positions are open to all qualified individuals; however, current faculty and classified employees will receive first consideration. Except where noted, inquiries and applications should be made at the Personnel Office, 201 James Blair Hall, and not at the department where the opening exists. Call 229-JOBS (229-5627) for an updated listing and 24-hour service. An EEO/AA employer.

COMPUTER OPERATOR A (part-time)-- \$4.04 per hour, 16-20 hours per week, mostly Saturday and Sunday hours; Computer Center; deadline Oct. 20.

CLERK TYPIST (part-time, unclassified)-- \$2.83 per hour, 15-20 hours per week; Corporate Relations and Placement Office; deadline Oct. 19.

GROUNDSMAN--\$6144 per year; Buildings and Grounds; deadline Oct. 21.

Philippines Program To Begin

William and Mary is initiating a new junior year abroad program in 1978-79 for study in the Philippines.

The program is conducted in association with Silliman University, located in Dumaguete City on the island of Negros. Approximately 12 students from William and Mary and other four-year accredited colleges will be accepted. The program is open to

students in all disciplines.

Information and application forms are available from Professor Vinson Sutlive, Anthropology Department, 120 Washington Hall, or Dean Joseph Healey, 209 James Blair Hall.

Completed applications may be submitted as of November 1, with a deadline date of December 1.

Personnel Bulletin

Equal Employment Opportunity Policy

The Commonwealth of Virginia shall provide equal employment opportunity to its employees and applicants for employment on the basis of fitness and merit without regard to race, color, religion, national origin, political affiliation, sex or age (except where sex or age is a bona fide occupational qualification). This policy shall be followed in recruiting, hiring, promotion into all position classifications, compensation, benefits, transfers; layoffs, returns from layoff, demotions, terminations, State sponsored training programs, educational leave, social and recreational programs and use of State facilities. Any person employed by the Commonwealth of Virginia who fails to comply with this policy is subject to disciplinary action.

Observance of Holidays During the Month of November, 1977

Veteran's Day

Although Friday, Nov. 11, is one of the authorized holidays for College employees, it is also a day on which classes will be in session. For that reason, it is imperative that normal services be maintained. The responsibility for maintaining full service on this day rests with the supervisor, and it is not a decision to be made by the employee alone.

Classified employees who work on this holiday will be credited with compensatory leave. A leave slip must be submitted to the Personnel Office for any classified employee who takes leave on the holiday. Hourly employees who work on this holiday will be paid their regular hourly rate.

Thanksgiving

The administrative offices, the plant department (except for those employees required to maintain essential services), and the mail room will be closed on November 24 and 25. The Campus Police Department will maintain regular hours.

The names of permanent classified employees who are required to work on either November 24 or 25, 1977, should be reported in writing to the Personnel Office in order that they may be credited with Compensatory Leave. Permanent classified employees who are required to work on either of these days should take compensatory leave earned as soon thereafter as possible in order to avoid excessive leave accumulation. Hourly employees who work on either of these days will be paid at their regular hourly rates.



(From left) McKenna, Cruz, Jaap, Livingston and King

Navy Salutes Marie Cruz

Freshman Marie Cruz was named recipient of a \$300 scholarship and certificate donated by the officers and enlisted personnel from the supply department of the submarine tender USS L. Y. Spears. Miss Cruz, daughter of retired DK1 Eladie F. Cruz of Norfolk, was selected for the award by the Supply Corps Alumni Association.

On hand to make the presentation, which took place in front of the Wren Building, were Rear Admiral James E. McKenna, SC, USN, senior supply corps officer in Tidewater, who serves in the dual role of commanding officer, Naval Supply Center, and supply officer, Fifth Naval District; Commander J. D. Jaap, SC, USN, and SKCS M. W. King, head and senior chief of the L. Y. Spears supply department, respectively. Dean of the Undergraduate Program James C. Livingston joined in congratulating Miss Cruz.

Supply Corps scholarships are awarded annually to sons and daughters of supply corps personnel, based on scholastic achievement, character and financial need.

Calendar

To schedule an event, contact the Campus Center Office, Ext. 4235 or 4236.

When a special program is planned for a meeting on campus, the William and Mary News welcomes further information about speakers, discussion topics, tickets and other details. Contact the News Office, 308 Old Rogers Hall, Ext. 4331 or 4371.

WEDNESDAY, OCTOBER 19

Office of Placement: Ernst & Ernst; Philip Morris, U.S.A.; Catholic University Law School; Southern Methodist U. Graduate School of Business. Make appointment for interview in Morton 104.

Faculty Luncheon Group, CC Room D, 11 a.m.

Field Hockey: W&M v. Madison, Barksdale Field, 3 p.m.

Fine Arts movies: Cezanne, Degas, and Monet, Andrews 201, 4 & 7 p.m. Public invited.

Glee Club, CC Sit 'n Bull Room, 6 p.m.

History Students Organization, CC Room C, 6:30 p.m.

Circle K meeting, Circle K House on S. Boundary St., 7 p.m.

Project PLUS "In-House" Forum, 7:30 p.m.

Bird Study Group, Andrews 101, 7:30 p.m.

Concert: Korean Choral Group, sponsored by Fellowship of Christian Athletes, CC Ballroom, 7:30 p.m.

Latter Day Saints Student Association, CC Gold Room, 7:30 p.m.

Hoi Polloi: Andrew Lewis Band, 9 p.m. \$1 cover.

THURSDAY, OCTOBER 20

Office of Placement: Babcock Graduate School of Management, Columbia Graduate School of Business, Price Waterhouse & Co. Make appointment for interview in Morton 104.

Center for Excellence, CC Rooms A&B, 9 a.m.

Corporate Relations and Placement: "Sales," Morton 20, 3 p.m.

BSA, CC Room C, 4 p.m.

Christian Science Organization, CC Green Room, 5 p.m.

Episcopal Holy Communion, Wren Chapel, 5:30 p.m.

Karate Club, Adair Gym, 5:30 p.m.

College Republicans, CC Room D, 6:30 p.m.

Residence Hall Life CPR Training, CC Ballroom, 7 p.m.

Dean Gilbert Roy (U.Va.) on "Languages in Asia," Asia House, 7:30 p.m.

Seminar in Applied Chemistry: Dr. Clair Collins (group leader, Oak Ridge National Laboratory, and professor of chemistry, U. of Tennessee), "The Use of Isotopes to Study Coal Chemistry," Millington Auditorium, 7:30 p.m.

Graduate Student Association keg party/study break, Grad Student Center, 8 p.m.

Spanish House Tertulia, Spanish House, 8 p.m. Public invited.

Hoi Polloi: Faculty Night--Willie Ninger, folk singer, 9 p.m. \$.25 cover.

FRIDAY, OCTOBER 21

Office of Placement: Price Waterhouse & Co., A.M. Pullen & Company (CPA firm). Make appointment for interview in Morton 104.

Law School Luncheon, Wren Great Hall, 12 p.m.

Seminar in Applied Chemistry: Dr. Clair Collins, "The Role of Ion Pairs in Controlling Product Formation During Solvolysis," Millington Auditorium, 3 p.m.

Classics Club Lecture: "Sepulcher in the Sky: A Monument of Late Hellenistic Asia Minor," by Elizabeth Fisher, classics professor at Georgetown University, Morton 20, 4 p.m.

WMCF, CC Sit 'n Bull Room, 6 p.m.

Navigators, CC Rooms A&B, 7:30 p.m.

SATURDAY, OCTOBER 22

CPA Prep Program, Jones 302, 8 a.m.-5 p.m.

Fencing, Adair Gym, 11 a.m.-7 p.m.

Cross Country: W&M v. Georgetown & Penn State, Dunbar Farms Course, 11 a.m.

Organ Recital, Wren Chapel, 11 a.m.

Soccer: W&M v. UNC-Wilmington, Cary Field, 2 p.m.

Oct-Terrace-Fest, JBT #42 lobby and grounds, 3-8 p.m. College community invited.

SBA Halloween Party, Grad Student Center, 6 p.m.-1 a.m.

WMCF Square Dance, Blow Gym, 8 p.m.

"Dancevent," modern dance program, PBK Auditorium, 8:15 p.m. No admission charge.

Hoi Polloi: Lynnbrook Band, 9 p.m.

SUNDAY, OCTOBER 23

Baptist Student Union dinner and program, BSU House on S. Boundary St., 5 p.m.

Catholic Student Association Mass, St. Bede's Parish Center, 5:30 p.m.

International Circle Seminar Series: Fine Arts Professor Richard Newman, "Artists and International Language," International Circle Cottage, S. Boundary St., 7 p.m.

Folk Dancing, Adair Gym, 7 p.m.

S.A. Movies: "Lipstick" and "Vanishing Point," W&M Hall, 7:30 p.m.

Concert Series: 5 by 2 Modern Dance Repertory Company (lecture demonstration), PBK Auditorium, 8:15 p.m. Admission free.

MONDAY, OCTOBER 24

Office of Placement: Dickinson School of Law. Make appointment for interview in Morton 104.

Concert Series: 5 by 2 Modern Dance Repertory Company (open rehearsal), 1-4 p.m.

Corporate Relations and Placement: "Multi-Corporations," Small 109, 3 p.m.

WMCF Folk Group, CC Sit 'n Bull Room, 7 p.m.

Sci-Fi Club, CC Room C, 7 p.m.

English Club Meeting: "Joseph Conrad and Stephen Crane," talk by English professor Elsa Nettels, CC Rooms A&B, 7:30 p.m.

Concert Series: 5 by 2 Modern Dance Repertory Company (performance), PBK Auditorium, 8:15 p.m. Admission \$3 for general public; \$1.50 for Concert Series season ticket subscribers and faculty, staff and students.

Badminton Club, Adair Gym, 8:30 p.m.

TUESDAY, OCTOBER 25

Office of Placement: Goodman & Company (CPA firm); and University of Tulsa College of Law. Make appointment for interview in Morton 104.

Introductory Career Planning Session, James Blair 208, 3 p.m. Call Career Planning Office, Ext. 4427, to sign up.

Field Hockey: W&M v. Bridgewater, Barksdale Field, 3 p.m.

Karate Club, Adair Gym, 5:30 p.m.

Orthodox Youth Fellowship, Wren Chapel, 6 p.m.

Glee Club, CC Sit 'n Bull Room, 6 p.m.

Ebony Expressions, CC Theatre, 6 p.m.

Free University: Self-Defense for Women, CC Ballroom, 7 p.m.

Catholic Student Association Mass, Wren Chapel, 7 p.m.

French Dept. film, Andrews 101, 7 p.m.

WEDNESDAY, OCTOBER 26

Office of Placement: Upjohn. Make appointment for interview in Morton 104.

Faculty Luncheon Group, CC Room D, 11 a.m.

Corporate Relations and Placement:



Campus radio station WCWM host Rick Koonce '77 interviews William and Mary graduate Sue Billingsley, news director for station WNOR in Norfolk, about career opportunities in broadcasting. The interview, which will be aired over WCWM-FM 89 at 8 p.m. on Sunday, Oct. 23, is part of a new series, "Not for Seniors Only," sponsored jointly by the radio station and the Office of Career Counseling. Career Counseling Director Harriet Reid said the program is designed to get undergraduates interested in planning their senior year. The series is being taped and broadcasts are available in the Career Counseling library, 297 James Blair Hall, for those who miss the broadcast.

"Resume/Letters," Morton 101, 3 p.m.
Student Affairs film, CC Theatre, 3 p.m.
Glee Club, CC Sit 'n Bull Room, 6 p.m.
Latter Day Saints, CC Room D, 7:30 p.m.
Project PLUS Forum: "The Ethiopian Revolution in Political and Personal Terms," Peter Sebastian, foreign service officer, Millington Auditorium, 7:30 p.m.
Hoi Polloi: Slapwater Band, 9 p.m. \$1 cover.

THURSDAY, OCTOBER 27

Order of the White Jacket dinner, CC Ballroom, 12 noon-11 p.m.

Order of the White Jacket cocktail party, CC Rooms A&B and Sit 'n Bull Room, 3-11 p.m.

Corporate Relations and Placement: "State Government," Morton 20, 3 p.m.

Christian Science Organization, Campus Center, 5 p.m.

Episcopal Holy Communion, Wren Chapel, 5:30 p.m.

Karate Club, Adair Gym, 5:30 p.m.

Asia House Dance Group: Indian Temple Dance Concert, CC Theatre, 7:30 p.m. Public invited.

Spanish House Tertulia, Spanish House, 8 p.m. Public invited.

Panhel Fashion Show, PBK Auditorium, 8:15 p.m. Free admission.

Hoi Polloi: Halloween party, 9 p.m.

FRIDAY, OCTOBER 28

Office of Placement: Institute for Paralegal Training, Connecticut Mutual Life Insurance. Make appointment for interview in Morton 104.

Corporate Relations and Placement: "Preparing for Interview," Morton 101, 3 p.m. WMCF, CC Rooms A&B, 6 p.m.

Folk Dancing, Adair Gym, 7 p.m.

Soccer: W&M v. East Carolina, Cary Field, 7 p.m.

Navigators, CC Rooms A&B, 8 p.m.

Notices

KOREAN CHORAL GROUP--The Fellowship of Christian Athletes is sponsoring "A Song of Love from Korea," a program of sacred choral music by a Korean children's choir, Wednesday, Oct. 19, at 7:30 p.m. in the Campus Center Ballroom. Admission is free. The choir is touring the United States under the auspices of Compassion, a Christian charitable organization that supports needy children in poverty areas around the world.

THANKSGIVING BUSES--The Student Association is chartering buses to Springfield Mall in northern Virginia for Thanksgiving vacation. They will leave William and Mary at 3 p.m. on Nov. 23, and return from Springfield Mall Sunday evening, Nov. 27. The cost is \$15 round trip per person. The buses will be filled on a first-come, first-served basis. Tickets may be secured at the SA office in the Campus Center. This opportunity is open only to members of the College community. For further information, contact Bob Fetterman, Ext. 4350.

WHEELLOCKING RESUMES--The Campus Police Office reminds faculty, staff and students who have not paid campus parking fines that their vehicles are subject to wheellocking. Lists of license numbers of those with unpaid fines are posted throughout the campus. For further information, contact the Campus Police office at 253-4596.

WORK DAY, OCTOBER 22--Members of the Women's Varsity Swim Team will do odd jobs for \$3 per hour on Work Day, Oct. 22. For information, call 253-4360.

Published weekly by the Office of Information Services during the academic year, except when the College is in recess, and twice each month in June, July and August. **Marjorie N. Healy**, editor

Publications Office, production News, photographs and advertisements should be sent to the News Office, 308 Old Rogers Hall.

The deadline for all submissions is Wednesday at 5 p.m. for publication the following Tuesday.

Classifieds

FOR SALE

HOUSE in York Terrace by owner, 3 BR's, 1 bath, remodeled interior, garage, large lot, garden, many trees; Call 229-6978. (10/18)

1972 AMC SPORTABOUT WAGON: power steering, manual transmission, air conditioning, new tires and battery. Runs well. \$1500. Call Cathy between 6 p.m.-10 p.m. at 229-2334. (10/18)

TRADITIONAL BEDROOM SUITE: queen size bed, matching night stands, dresser with double mirrors, chest, mattresses. Like new. \$650 or best offer. Call 874-7156 after 6 p.m. (10/25)

HOUSE IN KINGSWOOD, 3 BR Brick Ranch, 2 Ba., LR w/FP, DR, K FR, enclosed porch, laundry, garage, wooded lot, \$69,500. Call 229-6294 or 229-0814. (10/25)

LAKEFRONT LOT ON CUL-DE-SAC in First Colony (with sewer). Beautiful, heavily wooded lot sloping to water. Lots of privacy and good fishing. Ready to build. \$18,000. Call 220-2372 after 5 p.m. (10/25)

SLEEPING BAG--Large L.L. Bean Backpacker Supreme Goose Down Sleeping bag, excellent condition, \$85. Call 229-7754 or 229-6398. (10/25)

BICYCLE--Women's 10-speed. Orange AMF, 1975 model. In very good condition.

Great for riding around campus. Only \$40. Call Diane Beard or Lois Fink at 253-4418, or stop by Landrum #1 (Basement). (11/1)

1973 VW CAMPER. With poptop, sink, icebox, etc. Excellent condition. \$3,375. Call 564-9345 after 5 p.m. (11/1)

DIAMOND SOLITAIRE--Women's 1/2 carat solitaire (A quality) set in yellow gold. Beautiful and most unusual setting. Appraised at \$825. Will sell for less. Call Lance at 253-4453 after 5 p.m. (11/1)

SOFA--\$20; 2 wing chairs (one \$10, two for \$15); 1 new kitchen cabinet ideal for college students \$30; 1 new congolem art square 6 x 4 ft. \$10; electric fry pan \$12; Duncan type table \$7.50; desk lamp \$5; electric heater \$5; new mirror \$3; old fashioned mirror \$3; assortment of kitchen utensils \$3; Call 229-3844 after 5 p.m. weekdays. (11/1)

1974 VEGA Kammaback station wagon. Body in very good condition and engine in excellent condition. Pioneer KP500 stereo cassette FM tuner. New Michelin radials; Luggage rack. \$1700 negotiable - am buying a pickup. Call Jeff at 229-3376. (11/1)

1973 AMC HORNET. A/C, A/T, 4 dr., vinyl top, excellent condition. 22 mpg city and 28

mpg hwy. \$1800 or best offer. Call Mike Gibbons at 229-2755. (11/1)

FOR RENT

SUBLET 1 BR APT, A/C, W/W carpet, dishwasher, garbage disp., balcony, walk-in closet, convenient. \$200. Call 253-0205. (10/25)

FOR SUBLET--2 BR Apt. at Woodshire. A/C, carpet, dishwasher, garbage disposal, patio or balcony, \$215. Call 229-3054. (11/1)

WANTED

WANTED TO BUY: Steinway or Baldwin medium-grand piano. Call 229-2121, Ext. 593. (11/1)

FEMALE ROOMMATE to share two bedroom apartment at Stratford Hall beginning November 1. \$95/month plus half of utilities. Non-smoker, please. after 5, call 220-0156. (10/25)

FOUND

CALICO KITTEN, female; Call Ext. 4537. (10/18)