



# William and Mary News

VOLUME VI, NUMBER 38  
TUESDAY, JULY 25, 1978

## \$62,800 Kresge Grant Given To Law School



Sir Christopher Wren, master architect, who will be honored with a stained glass window at the new Marshall-Wythe School of Law building now under construction.

The Kresge Foundation of Troy, Mich., has given the Marshall-Wythe School of Law a \$62,800 grant toward the construction of an experimental moot courtroom in the school's new building.

"We greatly appreciate the Foundation's action and generosity," said Dean William B. Spong. "This enables us to complete the funding for the Marshall-Wythe experimental moot courtroom without using State funds. Once complete, this courtroom will be one of the best-equipped -- perhaps the best-equipped -- courtroom in the nation."

Kresge's gift to the Campaign for the College will be combined with an earlier grant of \$65,000 from the Robert G. Cabell and Maude Morgan Cabell Foundation of Richmond, and a \$152,200 grant from the Law Enforcement Assistance Administration, a federal agency. The three grants bring the total earmarked for this phase of the law school project to \$280,000.

The gifts will enable the College to expand the proposed courtroom by more than 1000 square feet and to install sophisticated video taping equipment, which some experts believe could greatly speed up the court process.

The courtroom will be designed to serve as a proving ground for procedures initially tested in mock trials.

Telecommunications methods demonstrated and tested by William and Mary students will be evaluated in terms of accuracy, integrity and quality of video recordings. Studies will be made to determine whether the cost of videotaping procedures are more or less than those associated with the traditional approach. Videotaping of mock trials will also enable Marshall-Wythe students to observe themselves and to analyze their performance in the courtroom environment.

During 1978, The Kresge Foundation considered 1229 qualified grant applicants seeking funds for construction and major renovation of facilities. Marshall-Wythe is one of 203 recipients out of that group.

The Foundation, which was created in 1924 through personal gifts from the late Sebastian S. Kresge, has given more than \$311 million to institutions in the areas of higher education, health services, the arts, social welfare and the care of the young and old. It is not affiliated with any other corporation or organization.

The experimental moot courtroom will be an important feature of the law school's new \$5.1 million building, which is scheduled to be completed by spring 1980. Located next to the recently opened National Center for State Courts, the building was funded by the bond issue approved by Virginia voters last November.

### *Maximas gratias in re duarum fenestrarum*

## Oxford Sends Windows for Law School

Oxford University has sent an early "birthday gift" to the College in anticipation of the 1979 bicentennial of the College's pioneer American chair of law, in the form of two stained-glass windows depicting Sir William Blackstone and Sir Christopher Wren.

Although the gift was offered more than a year ago, details of preparing the windows for shipping -- including a transatlantic exchange of cablegrams in Latin -- accounted for their arrival in Williamsburg this month. After local inspection by the architectural firm of Jones and Wilkerson of Richmond, the windows will be re-leaded and prepared for transfer to the new Marshall-Wythe School of Law building now under construction.

Blackstone was the first occupant of the Vinerian chair of law at Oxford in 1763, which became the model for the chair of law and "police" established at William and Mary in 1779. Wren, the great English architect of the late seventeenth century, provided sketches for the first building for the

colonial college in 1695, two years after its chartering.

Both Blackstone and Wren are alumni of All Souls College, Oxford. The law faculty of All Souls voted to offer the windows to the William and Mary law school when it learned of plans for observance of the two hundredth anniversary of the law program. In January 1977, Dr. William F. Swindler, John Marshall Professor of Law at William and Mary, had initiated correspondence with John Simmons, head of the Codrington Law Library at Oxford, to explore appropriate means for a joint observance of the bicentennial by the two institutions.

"It is particularly fitting that this sort of gift should come from Oxford, the seat of the oldest academic chair of common law in England, to William and Mary, where the first chair of law in the United States was established," said Dean William B. Spong, Jr., in announcing arrival of the windows.

As for the Latin cablegrams, Spong explained that after the All Souls faculty formally voted to make the gift

of the two windows, Simmons, in a bit of Oxonian humor, informed the law school in Williamsburg, "lente damus sed bis dabimus," which translates as "we are giving belatedly but we are giving twice." After quick consultation with Swindler and John Bridge, visiting professor from the University of Exeter, and with verification from William and Mary classics professor Ward Jones, the law school acknowledged, saying, "maximas gratias in re duarum fenestrarum" or "many thanks for the two windows."

"It probably wasn't the best classical Latin, but it let our Oxford friends know we got the message," Spong said.

Because final plans for the new building had not been completed at the time, the architects were able to make provisions for an appropriate incorporation of the "Oxford Windows," as they are already being called. They will be set on interior walls of a second-floor gallery overlooking a ground-floor court.

The windows, each approximately

four by six feet in overall dimensions, were originally part of a series of panels depicting famous alumni of All Souls College, created by a London colored-glass studio in the late nineteenth century. On the eve of the second World War in 1939, they were removed for storage and protection from bomb damage and were never reinstalled.

Blackstone, whose classic "Commentaries" on English law grew out of his Oxford lectures, became a standard authority on common law in America. St. George Tucker, the second law professor at William and Mary, prepared the first edition of Blackstone with American annotations in 1803. George Wythe, the first occupant of the William and Mary chair (1779-91), taught law to a number of early leaders of state and nation, including Tucker himself, Thomas Jefferson and John Marshall. The present law school is named for Wythe and Marshall, the great Chief Justice of the United States from 1808 to 1835.

# Student Waiters Juggle Trays Along With Books

When visitors to Colonial Williamsburg's restaurants see waiters straining to lift a tray-full of stuffed cornish hens and prime rib of beef, they tend to think the job is a tough one and at times, it is.

But if the young, gracious waiter in colonial costume leans slightly to one side -- even when he's not carrying a heavy tray -- it's probably because the

tips he's carrying in his 18th century pocket are equally heavy. And that's the real reason he's smiling.

Student waiters at the Colonial Williamsburg restaurants can pocket up to \$100 a day from appreciative diners who get good old-fashioned "service with a smile." The student waiters, who number about 150, insist that money isn't the only reason they

juggle trays as well as books during their years at William and Mary. It is not just a job, the veterans say, but a time-honored tradition.

"You begin as a dishwasher," says John Flora, a second year law student at Marshall-Wythe School of Law. "Then, after you prove you really want to work in this business, you get promoted to host, where you guide customers to their seats and distribute menus. After doing that for a few months, you get to work as a waiter."

Flora has worked his way up to headwaiter, handling the job of scheduling 70 others, one of whom is his own younger brother, Paul, a rising senior majoring in economics.

"The usual schedule calls for a three-day work week, averaging 15 to 30 hours per week," John says. "But we always schedule around the academic workload, with practically no work during exams. Naturally the workload increases in the summer when the tourist season picks up and school slacks off. That's the beauty of the job -- it fits perfectly into the lifestyle of a student."

"Fits perfectly" is no exaggeration. In those 15 to 30 hours per week, a good waiter can earn enough in tips to put himself through college, own a motorcycle or car, and perhaps even break into the housing market, as four waiters are hoping to do soon by pooling their resources to buy a house.

It was more than 35 years ago that a group of 20 young men from William and Mary began a working tradition which has remained intact ever since. Known initially as the War Workers, their jobs in those days consisted of defense-related tasks like unloading crates of dynamite from railroad boxcars. Fred Frechette of Williamsburg, '46, has written a history of the College's work-study and student aid programs. He says that it was not uncommon for the student workers at Yorktown's Naval Weapons Station, then called the Naval Mine Depot, to be "ankle deep in dynamite."

"The raw explosives were shipped in powder form in wooden crates," Frechette remembers. "Inevitably, a few would crack or break, spreading the white stuff all over the concrete floor. We worked so close to it that somehow we never considered how dangerous it was. We actually used to dare one another to light a cigarette, a foolhardy act which I can only attribute to the brashness of youth. The fact that we're around to enjoy reunions of the War Workers is a tribute to luck and, I think, some excellent supervision from our Navy boss."

Andrew Pare, a rising senior majoring in geology, says that waiting on tables is not as simple as it looks. "We do more than just serve food; we speak to patrons, amuse them, communicate in a way that relaxes them so they can enjoy their meal. A large percentage of our customers are returns, so really I'm the one who's new to them."

Pare's secret for good service -- and thereby good tips -- is simply "serve it the way you would like it served to you."

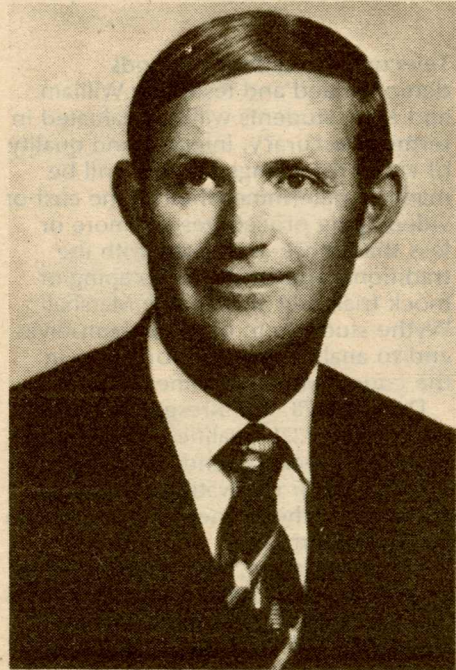
Pare admits he tries a little harder when celebrities and well-known politicians come in. "The Crown Prince of Japan and his entourage came in one evening, and we were all pretty excited about seeing royalty. I remember taking a peek around the corner to get a glimpse of his traditional Japanese dress. But what I saw looked like a bunch of American businessmen . . . I was a little disappointed."

The student waiters in Colonial Williamsburg are an informal fraternity, and they occasionally break the monotony by playing a joke on each other when the time is right. John Flora remembers what happened when one of their members "retired" from the business.

"We put cellophane wrap around the top of his water glasses during his last night at work," Flora recalls. "In the dim lighting, he didn't notice it until water gushed all over his tray and table. We did make sure he didn't come close to soaking any guests."

After graduation, many keep the ties between waiters strong, by joining the Order of the White Jacket, a fraternity of William and Mary alumni men and women, who served as waiters in the College dining halls or at Williamsburg restaurants.

## Secretary Wade Gilley Commencement Speaker



J. Wade Gilley

Virginia Secretary of Education J. Wade Gilley will speak at the summer commencement exercises August 19 at 1:30 p.m. in Phi Beta Kappa Hall.

One of the most experienced educators in Virginia, Gilley received both undergraduate and graduate degrees from Virginia Polytechnic Institute and State University. He has undertaken post-doctoral work at the Harvard Business School and the University of Florida.

At the age of 29, after serving as a design engineer and university professor, Gilley assumed the presidency of Wytheville Community College. He later became the first president and the driving force behind the creation of J. Sargeant Reynolds Community College in Richmond. Gilley also served as president of Bluefield State College in West Virginia.

Governor John Dalton appointed Gilley to the post of Secretary of Education soon after his election last November.

## Personnel Bulletin

### Overtime Policy for Non-Exempt Employees

The Supreme Court ruled that State and local governments are not subject to the Federal Fair Labor Standards Act. The effect of this decision is that Federal minimum wage and overtime requirements no longer apply to State employees.

The State maintains a policy that payment for properly authorized overtime will be made at a rate of time and one half. Compensatory leave may be allowed for overtime on an hour-for-hour basis. This policy applies only to those employees who are eligible for overtime compensation as defined within the Fair Labor Standards Act.

Overtime payment is authorized for exceptional requirements of an emergency and temporary nature. The Rules for *The Administration of The Virginia Personnel Act* prohibit the use of such payments to provide for continuing agency requirements, and they are to be used only to relieve specific occasional work loads. Overtime payment is specifically prohibited for employees in executive, administrative and professional positions. Such positions are partially defined as those in which the incumbents independently determine the need for extra hours (overtime), or in which the administrative or professional responsibility for work accomplishment without regard for schedule is implicit.

Overtime payments are not budgeted, and therefore approval for overtime work must be requested in advance by the appropriate dean or department head from the office of the Assistant to the Vice-President for Business Affairs. Such approval carries with it the understanding that the costs for the overtime payments will be absorbed in the existing budget of the requesting school or department.

The requirement for possible overtime work should be an expressed and understood condition of employment, based on current and anticipated needs of the employing school or department. When a supervisor is aware of a need for employees to work overtime, and after the approval noted above is obtained, those employees who may be required to work in excess of a 40 hour week should be notified of the reason for the overtime requirement as far in advance as possible, along with the date(s) and hours of such employment. Unless the employees have irreconcilable personal reasons as to why they cannot work as required, it is expected that they will perform overtime work as requested. Employees will not be required to perform overtime work in or for a department in which they are not normally employed.

Overtime work must in fairness be distributed among all eligible employees within a department as equally and as efficiently as possible. The selection of only one or a few individuals within a department, when there are others who are eligible and equally well qualified to perform overtime work, should be discouraged.

The above policy is applicable to all schools and departments at the College of William and Mary.

### Submission of Leave Slips

It appears that the leave policy for Official College Holidays is not clearly understood by some Supervisors and permanent classified employees alike. Independence Day, July 4, 1978 was a legal Holiday. However, it fell on Tuesday, and because classes were in session, normal services had to be maintained. Classified employees who worked 8 hours on this day were automatically credited with 8 hours of compensatory leave. Permanent classified employees who did not work any portion of the 8 hours work day are required to submit an appropriate leave slip to the Personnel Office so that the proper leave accountability can be maintained.

## Calendar

### SATURDAY, JULY 22

Organ Recital, Wren Chapel, 11 a.m.

### SATURDAY, AUGUST 5

Organ Recital, Wren Chapel, 11 a.m.

## Notices

**FOOTBALL TICKETS**--Faculty discount season tickets for the 1978-79 football season are now on sale. For detailed information call the ticket office, William and Mary Hall, ext. 4492, Monday - Friday.

**PLEASE WATCH WHERE YOU PARK**--Campus Police would like to remind faculty and staff members that their stickers do not entitle them to use slots designated for day students. In Morton Hall lot especially reports Chief Gunson, F/S stickers have been using up spots designated for students.

**PRINTOUT REVISED**--The computer printout of salaries in the personnel office no longer carries the salaries of employees earning \$10,000 or less. However, information on these salaries is still available, if requested, from the State Department of Personnel Office in Richmond.

## Phil Richardson Joins Staff

Philip (Phil) Richardson, retired U.S. Army colonel, has been named assistant budget director. He replaces Rosemary Schaffer who left for another position.

He will assist Dennis Cogle, assistant to the vice president for business affairs.

Richardson served for three years as budget analyst for the U.S. Army at the Pentagon. He was also a budget officer in Bien Hoa, Vietnam. His military career took him overseas to Korea and Japan. He commanded a tank battalion in Germany.

Richardson has a bachelor of arts degree in history from VMI, and a MBA degree from the University of Virginia.

Published weekly by the Office of University Communications during the academic year, except when the College is in recess, and twice each month in June, July and August.

**Barbara Ball**, editor  
**Publications Office**, production  
News, photographs and advertisements should be sent to the News Office, 308 Old Rogers Hall, Ext. 4331, 4371.

The deadline for all submissions is Wednesday at 5 p.m. for publication the following Tuesday.

# Set By Boll/Minnerly is Fine 'Real Estate'

Just four weeks ago there was a \$2,000 pile of lumber on the stage of Phi Beta Kappa Hall, looking like most lumber piles — a stack of wood waiting for creative hands to transform it into something artistic.

By Friday night that pile of lumber had been transformed by designers and carpenters into an Elizabethan set which should be allowed to take its own bows and curtain calls.

The set for the three plays, "Twelfth Night," "Taming of the Shrew," and

"Romeo and Juliet," being presented this summer by the Virginia Shakespeare Festival, is a masterpiece and adds great dramatic effect to the productions.

So appealing is the Elizabethan Inn on stage that there's been a lot of talk among crews and actors about how nice it would be to move in.

Laurie Smith '74, stage manager for all three productions, said the other day she heard the plumbing was going in next week.

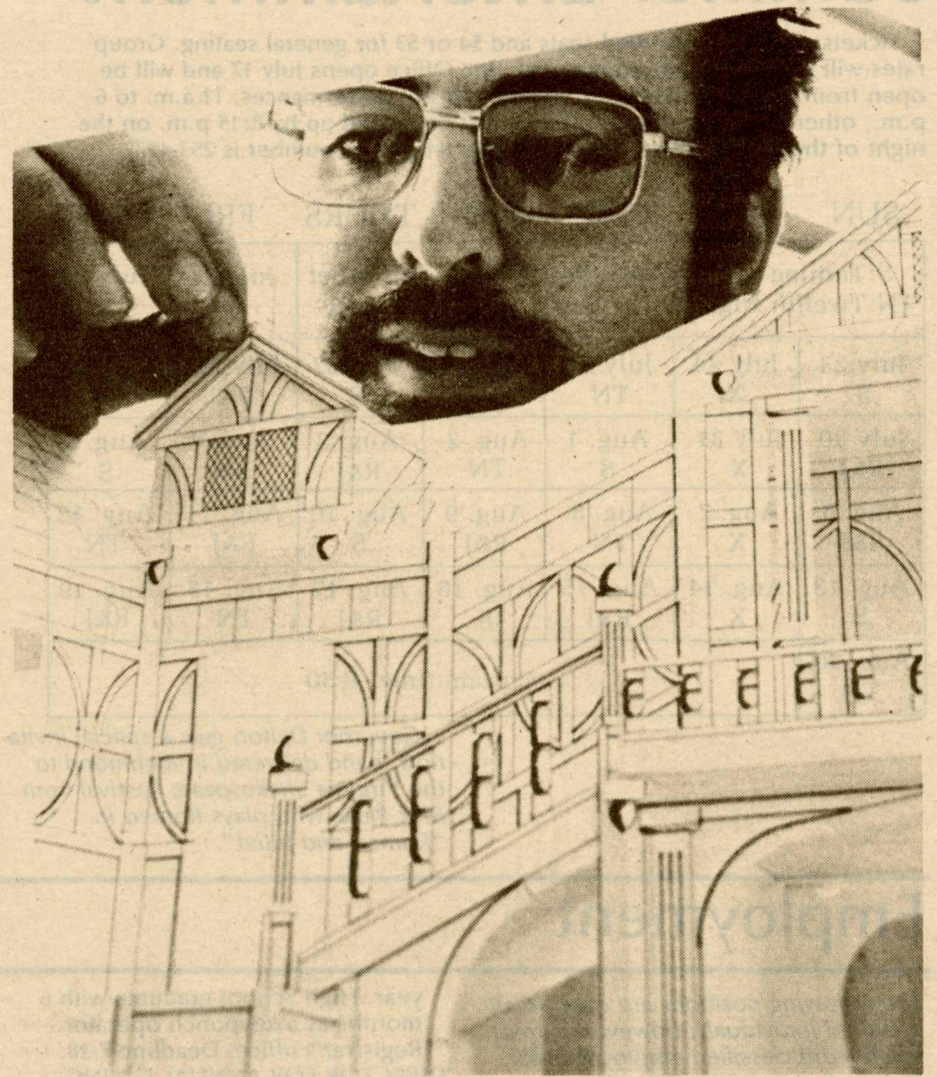
Jerry Bledsoe, scene designer for the Festival, said he would like to move in if he could add a bath and kitchen.

There's not much chance of anyone "moving in" since the beautiful Inn is only a facade but the illusion of permanence it engenders is a tribute to the work of Chris Boll and Doug Minnerly. Boll is an instructor in the Theatre department who teaches courses in technical production stagecraft and stage lighting. As well as masterminding the set construction, he is also designing lighting for the summer plays.

Minnerly '75, calls his design stylistically authentic. The set, he said, is not a duplicate of any one building but contains the major elements of Elizabethan staging. Minnerly brings to the job experience with the Oregon Shakespeare Festival. Minnerly has also made some pretty convincing duplicates of Elizabethan long swords for the dueling scenes for which the set will be a backdrop.

Kate Nuernberg '75, who has been studying scene design at the University of Wisconsin, sculpted a ferocious triton for the fountain which will be used in street scenes. Basically styro-foam, Kate's design got some technical help from Minnerly, who added layers of plastic and coated fabric to ensure the figurehead would last the summer.

The beautifully detailed stair railings,



Doug Minnerly looks over a Lilliputian version of the stage setting.



bannisters, graceful arches and leaded dormer windows that look so inviting are also very sturdy and will withstand the rigors of the productions, including duels and the rantings of

Kate the Shrew. Designed over a steel skeleton which has been used in the theatre several times in the past, the set has been constructed to last and after the summer will be carefully dismantled and stored, ready for another season.

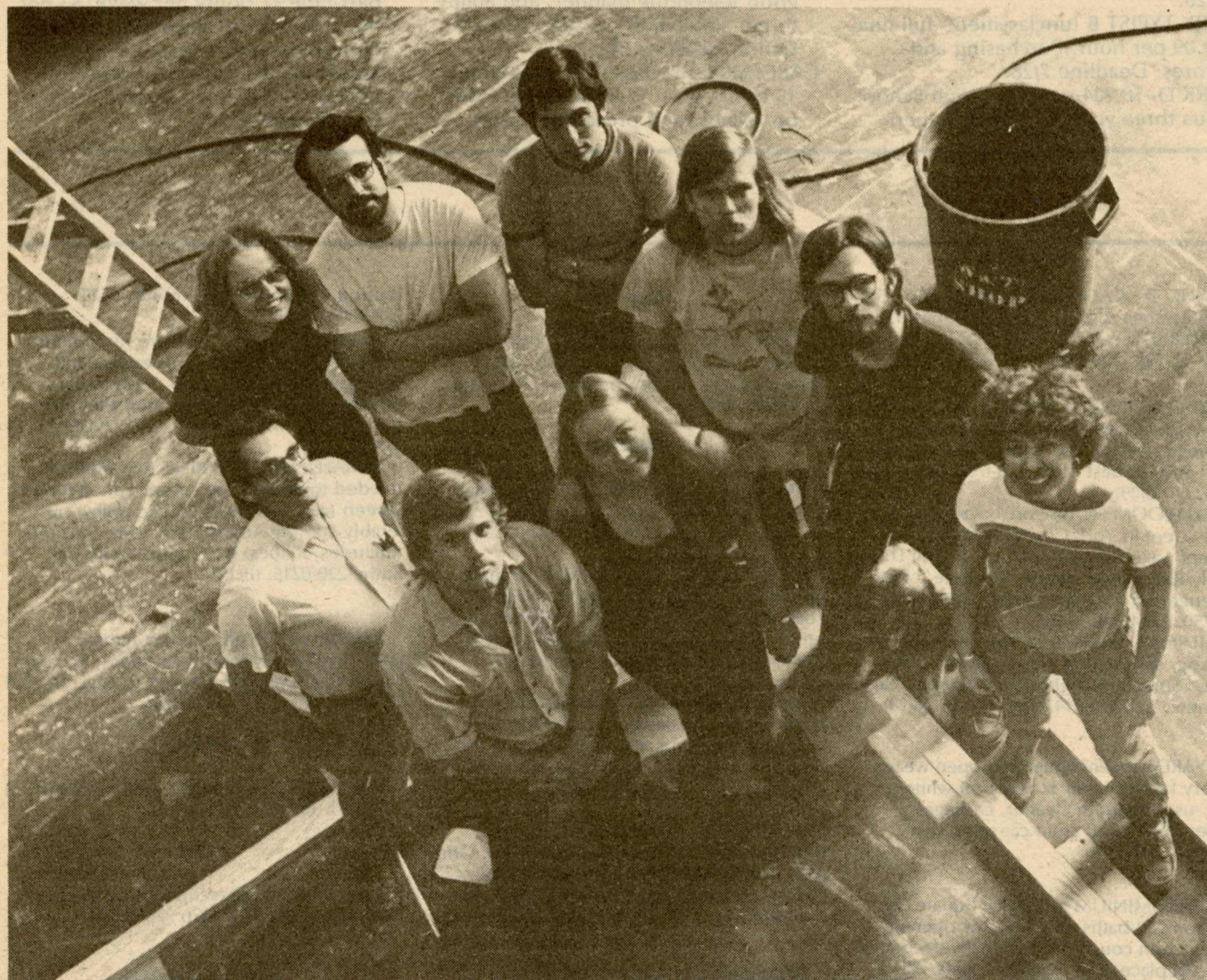
With a tight budget Boll and Minnerly did a lot of recycling of borrowed parts from other sets to get this one operable - as well as a few hours of labor. They reckon, roughly, that an average of ten hours of work a day, six days a week, has been contributed to the cause. The construction crew is paid a flat fee for the summer but they are working like unionists to get the work done and still have some work to do before set requirements for all three plays are met.

Boll got some welcomed help on construction from James Newburger of the drama department at his alma mater, Shippensburg State College. Newburger brought air tools from his well equipped shop and not only cut construction time but also made the job a lot easier for the crew.

Overseeing all the activity of the crew is Lynsy Wolsye, a handsome keeshond pup belonging to Boll whose main talent seems to be carrying off pieces of wood and "borrowing" tools. She's very friendly and is always there. No one complains that she takes more than her share of work breaks during the day - she's good for morale.

Both Boll and Minnerly are perfectionists and see things that could be added and refined but they are pleased with their set.

"There's no substitute for the real things," said Boll looking approvingly at the richness of the stained wood that gives the set its rich look. "The best set painter in the world can't duplicate the richness of real wood grain."



Mascot Lynsy Wolsye poses with co-workers (bottom, left to right) James Newburger, Jeff Sage, Laurie Smith (top, left to right), Kate Nuernberg, Doug Minnerly, Dan Isso, Bill Smith, Chris Boll and Cheryl Ossa. Above, Lynsy keeps a watchful eye on Chris Boll and Cheryl Ossa.

# Shakespeare Offers Summer Entertainment

Tickets are \$5 for reserved seats and \$4 or \$3 for general seating. Group rates will be quoted on request. The Box Office opens July 17 and will be open from 11 a.m. to 8:30 p.m. on the days of performances, 11 a.m. to 6 p.m., other days. Telephone orders must be picked up by 8:15 p.m. on the night of the performance. The box office telephone number is 253-4272.

SUN	MON	TUES	WED	THURS	FRI	SAT
S: Taming of the Shrew R&J; Romeo and Juliet TN: Twelfth Night				X: No performance		July 21 S
July 23 S	July 24 X	July 25 TN	July 26 TN	July 27 S	July 28 TN	July 29 R&J
July 30 R&J	July 31 X	Aug. 1 S	Aug. 2 TN	Aug. 3 R&J	Aug. 4 TN	Aug. 5 S
Aug. 6 R&J	Aug. 7 X	Aug. 8 TN	Aug. 9 R&J	Aug. 10 S	Aug. 11 R&J	Aug. 12 TN
Aug. 13 S	Aug. 14 X	Aug. 15 R&J	Aug. 16 S	Aug. 17 R&J	Aug. 18 TN	Aug. 19 R&J
Aug. 20 TN	Curtain time: 8:30					

Governor Dalton gets a special invitation, hand delivered in Richmond to the Virginia Shakespeare Festival from Rick Parks who plays Romeo in "Romeo and Juliet".



## Employment

The following positions are open to all qualified individuals; however, current faculty and classified employees will receive first consideration. Except where noted, inquiries and applications should be made at the Personnel Office, 201 James Blair Hall, and not at the department where the opening exists. Call 229-JOBS (229-5627) for an updated listing and 24-hour service. An EEO/AA employer.

**CUSTODIAL WORKER**--\$5,880 per year. Buildings and Grounds. Deadline 7/28 (4 openings).  
**CLERK C**--\$7,344. Swem Library, cataloging department. Deadline 7/28.  
**DATA ENTRY OPERATOR A**--\$7,344 per

year. High School graduate with 6 months as a keypunch operator. Registrar's office. Deadline 7/28.  
**DIRECTOR FOR ANNUAL GIVING**--Salary negotiable. (minimum \$15,675 per year). A results oriented person with six years of development experience. Related advanced education may substitute for part of the experience. Development Office, deadline 7/28.  
**CLERK STENOGRAPHER C**--\$7,680 per year. English Department. Deadline 7/28.  
**CLERK TYPIST B (unclassified)**--full-time \$3.09 per hour. Purchasing and Stores. Deadline 7/28.  
**CLERK D**--\$8,784 per year. High School plus three years of clerical experi-

ence one year at a responsible level equivalent to a Clerk C. The Office of the Associate Dean of the Faculty of Arts and Sciences. Deadline 7/28.  
**PROGRAM AIDE**--20 hours per week. \$3.00 per hour. College degree plus some specialized experience in writing and/or communications. More extensive experience may substitute for degree. Society of the Alumni House, deadline 8/2.  
**CLERK TYPIST C**--(unclassified) full-time \$7,344 per year. Accurate typist skills, good telephone manner, and ability to get along with people. Alumni Office, deadline 8/2.  
**CARETAKER (unclassified)**--part-time, 15 hours plus. \$3.00 per hour. Must be reliable and presentable with

housekeeping and minor repair skills. Alumni Office. Deadline 8/2.  
**COLLEGE HOSTESS C**--resident administrator. \$509.25 per month plus apartment and utilities. High School and experience involving public contact and work with young people, preferably in group activities. Knowledge of principles of student counseling and of the practices of good housekeeping. Asia House. Deadline 8/10.  
**DANCE ACCOMPANIST (unclassified)**--part-time 17 hours per week. \$5 per hour. Pianist to accompany modern dance technique classes. Ability to improvise in a variety of styles is essential. Women's Physical Education. Deadline 8/4.

## Classifieds

### FOR SALE

**RANGER 23 SAILBOAT (1976)**, half-share with faculty partner; sleeps four, auxiliary engine; slip on Mobjack Bay 22 min. from Williamsburg; split total expenses (\$75/mon) and equity clear (\$2700); 229-5056. (7/27)

**HOUSEHOLD ITEMS**. King size bed. Filing Cabinet. Desk Chair. Rug 6x9. Bookshelves. Small Maple Table. Moving--Call 229-4643 after 4 p.m. (7/25)

**FIRST COLONY BRICK RANCH**, 3 bedrooms, 2 baths, living room w/fireplace, formal dining room, eat-in-kitchen, family room, central air conditioning, large landscaped lot, garage; close to lake, river, tennis courts. Call 229-2055. (8/15)

One traditional coffee table, \$35; Air conditioner - 5000 BTU, \$50; 18 painted inside window shutters, \$60; Lawson sofa - light gray-green velvet, like new, \$250; Call 229-0764. (8/15)

**1970 MG MIDGET**: 49,000 miles, 40 mpg, new muffler, new battery. Inspected 7/21/78. \$1000 or best offer. Call Susan at 220-0531

**SPINET PIANO**, good condition; metal cutting band saw, never been used; Edison cylinder record player. Moving. Call 220-0491. (8/29)

**MOVING TO CALIFORNIA. MUST SELL!** 5' x 10' white shag rug \$25, Chest of Drawers \$15, 5000 BTU A.C. \$100, Several Lg. house plants \$5-\$20. 229-5835 or 253-4227. (8/29)

**1967 CHEVROLET CHEVELLE**, PB, PS, 327 engine in very good condition. Excellent Mechanical shape, but body shows some wear. \$650 or best offer. 229-6972 or 253-4227. (8/29)

**5 BEDROOM HOUSE** on 1 acre located on quiet street in York County. (Walk to Queens Lake School) 2,300 sq. ft. Full D.R. Family Rm. Raised Hearth Fireplace. Large screened porch, 2 car garage. Central air. \$77,750. 220-0798. (8/29)

**SAILBOAT BRISTOL 22**, fully equipped for cruising, sails, motor, head, galley, many extras. Summer-weight down sleeping bag, like new. Call 220-0143 after 6 p.m. (8/29)

**21 YARDS green/white/gold open weave drapery fabric**, 1 and 3/8 yards off-white vinyl; used vacuum cleaner, carriage/stroller, infant and child car seats. 229-2009. (8/29)

**CONDOMINIUM** at Barclay Square, 2-bedrooms, 2 baths with balcony opening onto garden court. Professionally decorated, brick fireplace in LR, window seats. All appliances, new drapes, and matching kitchen table and chairs included. ASSUMABLE 7 1/2 per cent mortgage. \$49,900 is \$3,000 lower than prevailing price. Call 229-8622 after 5 and weekends.

### FOR RENT

**APARTMENT TO SUBLET**. Parkway Apts. 3 bedrm., 2 bath apt., \$265/month, lease through Dec., month to month after. Call 220-2808. (8/29)

### WANTED

**SMALL UNFURNISHED HOUSE**, cottage, garage Apt., etc. To rent beginning in Aug. or Sept. for single, female student. Call Carolyn 229-4278. (8/29)

**2 OR 3 FEMALE ROOMMATES** to share partially furnished 3 br. apt. in Colonial Towne. Available Aug. 15th. \$260/mo. plus util. For more info, call Tamara Lacy (804) 239-5908 or local 253-2405 and ask for Teresa. (8/29)

**MALE ROOMMATES NEEDED** to share large house on spacious corner lot, 1 1/2 miles from campus. Available Aug. 15, no rent due until Sept. 1. \$100/month + share of utilities. Call 220-2808. (8/29)

**ROOMMATE NEEDED** for furnished 2-bedroom Conway Gardens Apartment. One mile from campus. Split expenses 50-50. Call 253-2441 after 1 p.m. for information. Ask for John. (7/25)

**SCHOOL-YEAR BABYSITTER** wanted for two children (18 mos. and 6 mos.) 9-4 daily one block from campus. \$2.50 hr. may bring own child. Call 229-4079 or 229-8819. (7/25)

**FEMALE ROOMMATE** wanted to share 2 bdrm. apt. for summer. 1 mile from campus

(Spring Road apts) \$115 month. Call 229-2604. (7/25)

Responsible person to care for 6 month old baby in my home on Tuesdays and Thursdays until 3:30. Also, Wednesday a possibility. Transportation and reference required. Begin September. Call 229-8532. (8/15)

**FEMALE NON-SMOKING ROOMMATE** needed to share large corner apt. at King & Queen (across from Bryan Complex), preferably starting August 15th. Rent \$105/mth (includes utilities) & 1/2 phone bill. Call Kathy 220-0215. (8/15)

**ROOM TO SHARE**: need 1 female to share master bedroom with same - in large house near college - June 23 to Aug. 15. Call 229-6096 - Ask for Ted. (7/25)

### FOUND

**WOMEN'S CLASS RING** - call to identify at 229-2973. (8/15)

### LOST

Lost pair optyl prescription sunglasses in Sunken Garden. Call Kip 220-1185.

### MISCELLANEOUS

**FREE DOG** - Female, spayed, house-broken, 35 lb. shep/Chow, very gentle, needs yard; Call 253-0405 (Wmsbg) or 421-9411 (Chesapeake). (8/29)