



William and Mary News

Volume VII, Number 15
Tuesday, December 12, 1978



A special invitation to campus for Williamsburg area school children has become a traditional part of the College's celebration of the holiday season.

This year, "A Holiday Storytime" features readings of familiar holiday tales by Howard Scammon, Professor Emeritus of Theatre and Speech, posing as one of Santa's assistants. Garbed in red with a tassled cap, Scammon is seated in a high-backed chair in front of the fireplace of the Great Hall at the Wren Building.

At the close of the program each child gets a gingerbread man to eat on the way back to school.

Visits for the program are being scheduled by the Office of University Communications, ext. 4226.

Board of Visitors Actions

The Board of Visitors meeting Friday and Saturday on campus rescinded the College's staff and faculty retirement policy in order to make it conform with recently adopted federal legislation.

Under the new plan, employees other than faculty members with tenure may continue employment at William and Mary until they reach 70.

Faculty members with tenure will retire at age 65 until July 1, 1982 when the retirement age will become 70.

In other action, the board formally directed the termination of relationships with Southside Historical Sites, Inc., which President Graves said had changed direction from an educational archaeology to presentation archaeology.

The board voted to return to the State 285 acres of undeveloped land at the VARC site.

The board also reaffirmed the stand it took at its October 28 meeting concerning expansion of facilities at Cary Field Stadium.

In October, while an architectural, financial and management feasibility study was being conducted on the enlargement of the stadium, the board decided it would not take any action at that time, but it did reach a consensus on several aspects of the project. Student fees will not be used for an expansion; any expansion will proceed ahead in stages, to ensure that any modifications of the present facility are fully responsive to all criteria of the feasibility study; the financing of an expansion will not interfere with the successful completion of the Campaign for the College and/or with the top priority of the College and the board to improve faculty salaries; any phase of the expansion will be based on clear evidence of a specific source of funds from a major outside donor or donors.

Cary Field Stadium

AUTHORIZATION TO CONTINUE PLANNING FOR EXPANSION OF CARY FIELD STADIUM

At its meeting on October 27-28, 1978, the Board of Visitors discussed in detail the possibility of enlarging the seating capacity of Cary Field Stadium, authorized the President to proceed ahead with a feasibility study along several dimensions, and reached a consensus on several aspects of an enlargement of Cary Field Stadium. At that time the Board authorized the President to make the attached statement on its behalf in regard to those several matters related to the expansion.

The feasibility study has proceeded ahead well. As a result of the study to date, the Board has concluded that there is a need to expand the seating capacity of the stadium. The Board has further concluded, from the study, that the enlarged seating capacity will permit the College to provide more attractive scheduling of home football games, will attract larger attendance at home football games and will lead to larger revenues at home football games. The Board has concluded, from the feasibility study, that an expansion of seating capacity is economically and financially feasible, in terms of anticipated game scheduling, anticipated attendance and anticipated revenues, in relationship to anticipated costs.

The feasibility study is continuing, in regard to questions of traffic flow, parking, related environmental matters, and the impact of an expanded facility on the campus and the City of Williamsburg and on those who live, study and work here. The study is also continuing in regard to the financing of the expansion through a gift from a major donor or donors.

RESOLVED, That the Board of Visitors authorizes the President to proceed ahead with the feasibility study as expeditiously as possible.

RESOLVED, FURTHER, That the Board authorizes the President to proceed with the undertaking of Phase #1 of the expansion (an estimated 11,788 new seats in the west stand, at a cost of an estimated \$1,817,000 in 1978 dollars), at the conclusion of the feasibility study, and when the financing of Phase #1 of the expansion is assured, in accordance with the consensus reached at the October 27-28 meeting of the Board.

RESOLVED FURTHER, the President is authorized to proceed immediately thereafter with all necessary steps that will lead to the early and successful completion of the expansion.

Graduate Marine Science Education

VIRGINIA INSTITUTE OF MARINE SCIENCE

The Board of Visitors takes note of and welcomes the action of the State Council of Higher Education on December 5, 1978, regarding graduate marine science education in Virginia.

It is very pleased to note especially the recommendation of the State Council, that a marine science consortium be established, to coordinate and promote the goals and objectives for the Commonwealth's future effort in graduate marine education; and that the Virginia Institute of Marine Science be made an integral part of the College of William and Mary.

The Board notes further that the Council's recommendations, if they are implemented, will place a major responsibility on the College of William and Mary, its Board of Visitors and its administration, in the management of graduate marine science education in Virginia and especially at the Virginia Institute of Marine Science.

RESOLVED, That if the Governor and the General Assembly see fit to act favorably on these recommendations from the State Council, the Board of Visitors of the College of William and Mary will welcome with pleasure and confidence and will be prepared to accept the substantial responsibility for participating actively in the marine science consortium and for directing the educational, research and public service activities and functions of the Virginia Institute of Marine Science.

Retirement Policy Reestablished

Section 51-111.54 of the Code of Virginia provides that, "Any member who is a State employee or a teacher, both as defined in Section 51-111.10, and who attains seventy years of age shall be retired forthwith; provided that an employer may provide for the compulsory retirement of his employees at any age from sixty-five to seventy; . . ."

On March 27, 1972, the Board of Visitors of the College of William and Mary established a "policy of retiring employees at age sixty-five unless there are exceptional circumstances, when recommended by the President and approved by the Board of Visitors, which retention will be subject to annual review." This policy became effective on July 1, 1972.

The 1978 amendments to the Federal Age Discrimination in Employment Act, which will become effective on January 1, 1979, prohibit the forced retirement, based solely on age, of employees below the age of seventy. An exception in the Federal law permits colleges and universities to retire tenured employees at age sixty-five until July 1, 1982.

RESOLVED, That the Board of Visitors of the College of William and Mary in Virginia hereby rescinds the retirement policy established on March 27, 1972, such rescission to be effective December 31, 1978.

RESOLVED FURTHER, That the Board of Visitors hereby establishes new retirement policies as follows, effective January 1, 1979:

Employees, other than faculty members with tenure, may continue employment at Richard Bland College until they reach the age of seventy. Upon recommendation by the President and subsequent approval by the State's Director of the Department of Personnel and Training, any such employee may be retained through the last day of the fiscal year in which he or she attains the age of seventy.

Until July 1, 1982, faculty members with tenure will be retired at age sixty-five, unless there are exceptional circumstances, with retention recommended by the President and approved by the Board of Visitors. Such retention shall be subject to annual review. After July 1, 1982, the rules governing non-tenured employees will apply.

Library Acquires Marshall Letter

Swem Library has announced the acquisition of an important letter written by John Marshall, purchased with funds made available by alumnus John M. Presson, a member of the class of 1916.

The letter was obtained at the Sotheby Parke Bernet auction of the Elsie O. and Philip D. Sang Foundation property.

Considered by Charles Cullen, editor of *The Papers of John Marshall*, to be one of the most significant and comprehensive Marshall letters in existence today, it concerns the constitutional and political issues surrounding presidential elections. The letter will be added to the library's collection of John Marshall manuscripts and will be published in the ninth or tenth volume of *The Papers of John Marshall*. Two volumes have already been printed and a third is currently at the press.

In the letter, Marshall shows his changing attitudes from 1787 through 1830, as the people of the newly-formed country gained more direct responsibility for selecting their president.

Marshall wrote in response to former U.S. Senator James Hillhouse's proposed amendment to the Constitution, which specified that the President be elected by drawing lots among the U.S. Senators. Marshall wrote the letter on May 26, 1830, amidst the strife and turmoil surrounding the election of the President and Marshall's own changing position.

"Your plan comes in conflict with so many opposing interests and deep rooted prejudices that I should despair of its success. . . . All those who are candidates for the Presidency either immediately or remotely, and they are more numerous than is imagined, and are the most powerful members of the community, will be opposed to it," Marshall stated. "The body of the

people will also most probably be in opposition; for it will be difficult to persuade them that any mode of choice can be preferable to election . . . immediate by themselves. The ardent politicians of the country, not yet moderated by experience, will consider it as an imputation of the great republican principle that the people are capable of governing themselves. . . . My own private mind has been slowly and reluctantly advancing to the belief that the present mode of choosing (sic) the chief Magistrate threatens the most serious danger to the public happiness. . . . The passions of men are inflamed to so fearful an extent, large masses are so embittered against each other, that I dread the consequences. . . . Reasoning *a priori* I should undoubtedly pronounce the system adopted by the convention the best that could be devised. Judging from experience I am driven to a different conclusion."

Candles and Carols

The Lutheran Student Association is sponsoring a service of candles and carols for all College students December 17 at 7:30 p.m. at St. Stephen's Lutheran Church of Jamestown Road.

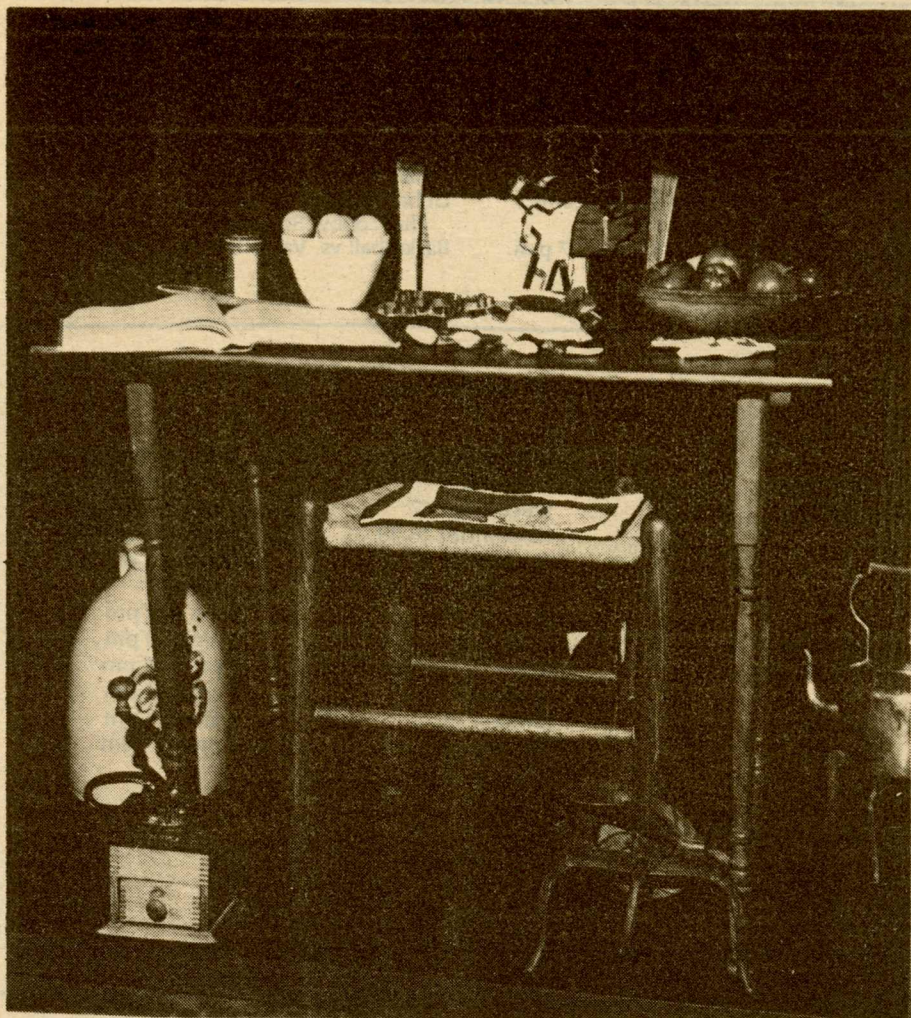
Midwinter Dance

The College Women's Club will hold its Midwinter Dance Friday, February 2, from 9 p.m. to 1 a.m. in the Campus Center Ballroom.

Admission is \$6 per person prior to January 24; \$6.50 after that date.

Refreshments and set-ups will be provided by the club. Music will be by the Gabriele Combo.

For further information or reservations, call Nancy Archibald, 220-2317, or Sandy Crawford, 229-1275.



This 19th century kitchen scene is part of the sights and sounds of Christmas included in the Library exhibit.

Library Exhibit Features 'Christmas in America'

For the casual browser, the holiday exhibit "Christmas in America" in the Zollinger Museum of Swem Library is a delight. For more scholarly types, it contains a collection of literary gems as bright as the ornaments on the tree.

The exhibit is open to the public from 9 a.m. - 4:45 p.m., Monday through Friday, through Jan. 5, on the ground floor of the library building.

A background of American carols and Howard Scammon's recorded reading of the 19th century classic "Twas the Night Before Christmas," provide a musical setting for the display of 17th, 18th and 19th century works by contemporary writers and illustrators. Scammon, long-time director of the William and Mary Theatre, is a professor of theatre emeritus at the College.

The literary tour begins with Captain John Smith's description of a Colonial Christmas in his "Generall Historie of Virginia, 1624." There's also an account of an 18th century Christmas at a Virginia Plantation by Philip Fiftian, tutor to the children of Robert Carter.

The history by Smith comes from Swem Library's rare book collection, as does a Christmas sermon by Thomas Thatcher given at the Episcopal Church in Dedham, Mass., in 1797. Other books in the collection have been taken from the library stacks.

There is a description of how transplanted Dutchmen celebrated Christmas in New York in 1883; a Moravian Christmas in Pennsylvania during 1752; Christmas 1862 in San Francisco; Robert E. Lee's Christmas in Texas during 1846; and an account of a 19th century Christmas in Pennsylvania with the visit of Der Belsnickel, the German Santa Claus.

Harriet Beecher Stowe, Phillips Brooks, Edward Everett Hale, John Greenleaf Whittier, Bret Harte, Joel Chandler Harris, William Dean Howells and Frank Stockton are among the writers also represented in the exhibit.

Visual recollection of Christmas through the years is included in the works of Thomas Nast, the illustrator

who popularized the figure of Santa Claus as a jolly, round man in a fur-trimmed suit, as well as familiar works by Currier and Ives and Norman Rockwell. There is also a 19th century Christmas meal.

A collection of old Christmas cards, which look more like postcards than today's versions, are on display. A history of cards shows the first one designed by John C. Horsley for Sir Henry Cole in 1843. By 1875, the tradition of sending cards had migrated to the United States.

One of the last books in the exhibit is a 20th century view of the meaning of Christmas, "Let's Keep Christmas," by Peter Marshall, former chaplain to the U.S. Senate.

The exhibit has been arranged by two members of the Swem Library staff, Margaret Cook, curator of manuscripts, and Sally Gray, periodicals librarian.

Yule Log Due Saturday Eve

The Yule Log Ceremony will be held at 6 p.m., Dec. 16, at the Sir Christopher Wren Building.

The William and Mary Choir, under the direction of Frank T. Lendrim, will lead everyone in a medley of Christmas carols to open the program. Sprigs of holly will be distributed for the traditional touching of the log and tossing of the holly into the fire. The large log will be brought into the fireplace of the Great Hall.

President Thomas A. Graves, Jr., will read a traditional Christmas story and W. Samuel Sadler, Dean of Students, will read the Christmas story from the Gospel according to St. Luke.

Carol Arnold, president of Omicron Delta Kappa leadership fraternity, will review the history of the Yule Log

Continued on P. 4

Holiday Greetings

This year, in an effort to hold down expenses, Mrs. Graves and I are again not sending personal Christmas cards to current members of the faculty, administration and staff.

We would like to take this opportunity, however, to extend to each of you and your families our very best wishes for a happy holiday season and for a peaceful New Year.

We hope to see many of you over the holidays, to wish you personally a Merry Christmas and a Happy New Year.

Thomas A. Graves, Jr.

Newsmakers

Norman F. Barka, professor of anthropology, has been named president-elect of the Society for Historical Archeology, a national organization with a membership of over 2,000 from the United States, Mexico and Canada.

Barka will become president in 1980. His election will be formally announced to the membership at the national convention of the Society in Nashville, Jan. 2-6.

A former president of the Council of Virginia Archaeologists, Barka has been involved in major archeological projects in Virginia for the past 13 years. He joined the faculty in 1965.

Under his direction, the Grand French Battery at Yorktown was designed and reconstructed. He has also directed work at Flowerdew Hundred Plantation along the James and Ash Lawn in Charlottesville. Also in Yorktown, Barka directed the first digging at the site of the Poor Potter of Yorktown, a site which had been sought by archeologists for over ten years.

In 1968 Barka, with Dr. Ben McCary, professor of modern languages emeritus, conducted a four-year study of Indian life along the Chickahominy River under a grant from the National Science Foundation.

William Hawthorne and **Joe Ben Hoyle**, both assistant professors of business administration, recently presented a paper entitled "Accounting and Auditing Practices of Virginia CPA Firms" at the Management of Accounting Practices Conference sponsored by the Virginia Society of CPAs.

Robert Maidment, associate professor of education, conducted Women In Management II on November 30 and December 1 at the Bonhomme Richard Inn in Williamsburg.

James Yankovich, Dean of the School of Education, and **Robert Emans**, associate dean, attended the Virginia Association of Colleges for Teacher Education in Charlottesville, November 29.

The following members of the Modern Languages and Literatures Department attended the SAML meeting in Atlanta on Nov. 9-11: **Merritt Cox**, **Elsa S. Diduk**, **Waldemar Eger**, **Joanne Funigiello**, **Alexander Kallos**, **John Moore**, **Anne Netick**, **Maria R. Palmaz**.

Professor Diduk gave a paper on "The German Women's Literature Course: Critical Approaches." She was elected Chairperson of the Women's Caucus for a 2 year term.

Professor Funigiello chaired a meeting on Pedagogy in the Women's Caucus, section 2.

Professor Palmaz chaired the nominating committee, Workshop No. 1.

Professor Cox was a member of the Nominating Committee for Spanish 2 - Modern Spanish Literature.

William J. Maddocks, Associate Professor of Business Administration, attended the 1978 Winter Simulation Conference in Miami, Dec. 5-6, and presented a paper titled "Heuristic Search Methodology for Compound Simulation."

Open House on Dec. 19

The National Center for State Courts has issued a special invitation to students, staff and faculty of the College to attend a Community Open House at the Courts building, 300 Newport Avenue, Tuesday, Dec. 19, from 5-7 p.m. There will be guided tours of the facilities and light refreshments will be served.

Choir, Como on TV Wed.

Watch for the William and Mary Choir and the Men of the Choir tomorrow night on the Perry Como Christmas Special from Williamsburg over ABC (Channels 8 and 13) Wednesday, Dec. 13, at 9 p.m.

Alumnus Harvey Credle, originator last summer of Colonial Williamsburg's "Living History" program, repeated his "indentured servant-in-the-stocks" for Como.

In the scenes in the ballroom of the Palace, while you are enjoying the dances, look for Bob Hunt, Dean of Admissions, and Stanley Brown, Director of Corporate Relations and Placement, who will be dancing with their wives as part of the group performing 18th century dances.

Como and John Wayne join the men of the choir for several holiday songs in a tavern scene and the program closes with the procession of the choir into Bruton Parish Church and Como's "Ave Maria."

Credle will have to race home from work if he wants to see himself on TV. He is currently playing Santa Claus at a shopping center and he has "office hours" from 6 - 9 p.m.

CC Sets Hours

Next week the Campus Center will be open Dec. 20 and 21 from 8 a.m. to 5 p.m. The Wig will close both days at 2 p.m.

The Center will be closed Dec. 22 until Jan. 2. Jan. 2-5, the building will be open from 8 a.m. to 5 p.m., the Wig from 8 a.m. to 2 p.m. It will be closed Jan. 6 and 7 and open Jan. 8-12 from 8 - 5 p.m. and Dec. 13 and 14 from 9 a.m. to 6 p.m. The Campus Center will resume its regular schedule Jan. 15.

Calendar

TUESDAY, DECEMBER 12
CSA Mass, Wren Chapel, 12:15 p.m.
BSA Meeting, CC Room C, 2:30 p.m.
Navigators, CC Green Room, 7:30 p.m.

WEDNESDAY, DECEMBER 13
CSA Mass, Wren Chapel, 12:15 p.m.
Circle K, Circle K Office, S. Boundary St., 7 p.m.
Antique Show, CC Ballroom, all day.

THURSDAY, DECEMBER 14
CSA Mass, Wren Chapel, 12:15 p.m.
Canterbury, Wren Chapel, 5:30 p.m.
Parachute Club, CC Green Room, 7:30 p.m.
Antique Show, CC Ballroom, all day.

FRIDAY, DECEMBER 15
CSA Mass, Wren Chapel, 12:15 p.m.
Antique Show, CC Ballroom, all day.

SATURDAY, DECEMBER 16
Yule Log Ceremony, Wren Courtyard, 6 p.m.
Esperance Dance Performance, PBK, 8:15 p.m.
CSA Christmas Mass, St. Bede's Parish Center, 11 p.m., followed by breakfast.
Indoor Track, H.S. Invitational, W&M Hall.
Antique Show, CC Ballroom, all day.

SUNDAY, DECEMBER 17
Christmas Candlelight Service, Lutheran Student Assoc., St. Stephen's Lutheran Church, 7:30 p.m. Everyone invited.
Episcopal Services, Bruton Parish Church, 8, 9:30 and 11 a.m.
Esperance Dance Performance, PBK, 8:15 p.m.

MONDAY, DECEMBER 18
Organ Recital, Wren Chapel, 11 a.m.
CSA Mass, Wren Chapel, 12:15 p.m.
Christian Coalition for Social Concerns, CC Gold Room, 5:30 p.m.
Co-ed Badminton Club, Adair, 7 p.m.

TUESDAY, DECEMBER 19
Organ Recital, Wren Chapel, 11 a.m.
CSA Mass, Wren Chapel, 12:15 p.m.
Navigators, CC Green Room, 7:30 p.m.

WEDNESDAY, DECEMBER 20
Christmas Vacation begins.

WEDNESDAY, JANUARY 3
Basketball vs. Muhlenberg, W&M Hall, 8 p.m.

THURSDAY, JANUARY 4
Women's Forum, CC Gold Room, 7:30 p.m.

SATURDAY, JANUARY 6
Basketball vs. J. Madison U., W&M Hall, 3 p.m.

SATURDAY, JANUARY 13
Gymnastics vs. Slippery Rock St. Col., W&M Hall, 1 p.m.
GRE Exam, Millington Aud., all day.

Yule Ceremony Started in 1930

Continued from P. 3

Ceremony. ODK and Mortar Board are co-sponsors of the program, which this year was arranged by Jim Barry, vice president of Mortar Board. Colonial Williamsburg assisted students with the program planning. Refreshments will be served at the close of the program.

The ceremony of the Yule Log is believed to have started with German tribes in northern Europe as part of their Winter festival. The Scots and English adapted the ceremony and it became part of the observance of Christmas. The tradition came to the New World with the colonists and continued to be a popular event with early planters in Virginia.

There are many superstitions surrounding the Yule Log. It was thought to be bad luck if the log did not burn for the full 12 days of Christmas. Touching the holly to the log was believed to ward off evil spirits; the woes and cares of the year go up in flames as the holly is tossed in the fire.

First introduced on campus in 1930 by Dr. Grace Warren Landrum, dean of women, the Yule Log Ceremony was a very elaborate affair requiring a large cast. The president of the College was dressed in colonial costume as the "Lord of the Manor" and his assistant as "Lord of Misrule." A young child, usually from a faculty family, poured wine over the log and threw the first piece of holly into the fire.

MONDAY, JANUARY 15
Classes begin, 8 a.m.
Christian Coalition for Social Concerns, CC Gold Room, 5:30 p.m.
Science Fiction Club, CC Room C, 7 p.m.

History Dept. Film, Botetourt Theatre, 7:30 p.m.
TUESDAY, JANUARY 16
Debating Society Interest Meeting, Project Plus Lobby, Botetourt Unit 7, 7:30 p.m.
Basketball vs. Va. Wesleyan, W&M Hall.

Library Schedule

	December 11-15	8 am to midnight
Saturday,	December 16	9 pm to midnight
Sunday,	December 17	1 pm to midnight
	December 18-19	8 am to midnight
	December 20-22	8 am to 5 pm
	December 23-Jan. 1	CLOSED
	January 2-5	8 am to 5 pm
Saturday,	January 6	9 am to 6 pm
Sunday,	January 7	1 pm to 5 pm
	January 8-12	8 am to 5 pm
Saturday,	January 13	9 am to 6 pm
Sunday,	January 14	1 pm to 5 pm
	January 15	

RESUME REGULAR SCHEDULE

Notices

BUSCH AUDITIONS--The live entertainment department of "The Old Country," Busch Gardens, will be conducting auditions at Busch Gardens, Saturday, Jan. 20, from 10 a.m. to 5 p.m. and February 17 and 18 from noon to 6 p.m. in the Globe Theatre.

Needed are 170 singers, dancers, costume characters, jugglers, mimes, puppeteers, magicians, bagpipers, violinists, bluegrass bands, musicians and technicians to entertain for the entire summer.

For additional information, contact Live

Entertainment Department, Busch Gardens, P.O. Drawer FC, Williamsburg, phone 220-2000, ext. 281.

SKI TRIP--There are still a few spaces on the United Skiers' ski trip to Sugarbush, Vt., from Jan. 7-12. Slope-side condominium and a five-day lift ticket are included with optional rentals, lessons and bus transportation. About 30 percent of the people on the trip have never skied. For more information, call Steve Willett at 220-2224 (best time after 9 p.m.) or drop by Chandler 111.

Classifieds

FOR SALE

'68 SAAB STATION WAGON, engine good but there are dents in door and fender. Also needs transmission work. Call Peter Lane at ext. 4455. (1/16)

1971 VOLVO 164, excellent condition. Call 220-3005 or 229-0974. (%)

KINGSWOOD, Brick Rancher, wooded, private lot. 3 beds, plus study, 2 baths, living room with brick fireplace, dining room, kitchen, family room, enclosed porch, laundry, garage, A/C, \$72,500. Call 229-6294 or 229-0814. (12/12)

MOVING--MUST SELL! Piano, \$100 or best offer, walnut dresser, cherry dining table and matching chairs, antiques desk, coffee tables, lamp, rug, bookshelves, misc. 1972 white VW Superbeetle, AM/FM/tape player, excellent condition. \$1,400. Call Becky at 220-0828. (12/12)

MEN'S AQUADIVE DIVING WATCH. Never used, tested to 150 ft. Asking \$55. Call 229-4906 after 4:30. (12/12)

MAN'S WETSUIT, small, good condition, quarter-inch nylon lining; \$25. Call 229-3592. (12/12)

FOR RENT

2 BEDROOM furnished, 2 miles from campus. \$165 per month plus utilities. Phone 220-2736. (12/12)

3 BEDROOM, 1 1/2 bath, den, garage, all appliances--washer/dryer; dishwasher, unfurnished, \$450/mo. plus utilities; Ideal 3 or 4 students. Available Dec. 1. Phone 229-4849. (12/12)

WANTED

FEMALE ROOMMATE (grad student) to share 2 bedroom apt. \$130 all utilities included. Call Anne at 229-3879. (1/16)

LOST

BRACELET, gold and silver, wide-band, bangle bracelet between cafeteria and Small Hall. Reward. Call ext. 4570. (12/12)

.35 mm f 3.5 Canon FD lens with front and back caps; 58 mm lens cap in black lens case. If found please call collect, Martha L. Gay, (301) 498-9418. Reward offered.

FOUND

GLASSES, brown frame; found in Women's restroom, Millington Hall. To identify, stop by Millington Room 116. (1/16)

GIRLS DARK GREEN SLEEVELESS SWEATER VEST, Found behind W&M Hall after the Boston Concert. Call Steve Ruff at ext. 4535. (1/16)

KEYS IN RED CASE. Found in parking lot behind & across the street from Swem Library. Call Craig to identify, ext. 4208. If not in, leave message, he will return your call. (12/12)

TWO JACKETS, one beige and one blue. Also one leather key case. These items were found in Millington Hall. Please come to Millington 234, Psychology Office to claim. (%)

CAMERA--across the street from Landrum Hall. Contact Psychology Dept. to identify. Call ext. 4234. (%)

TWO HIGH SCHOOL RINGS--Christ Church School & Denbigh High School. GOLD WATCH. Assorted Keys. Found in PBK Hall. Call ext. 4395. (%)

AT BLOODMOBILE, St. Bede's Church. One small dark green sweater w/College emblem. One light green umbrella w/silver handle. Call 229-4765. (12/12)

Employment

The following positions are open to all qualified individuals; however, current faculty and classified employees will receive first consideration. Except where noted, inquiries and applications should be made at the Personnel Office, 201 James Blair Hall, and not at the department where the opening exists.

CLERK D, \$8,784 per year--High school graduate with three years clerical experience, one year of which was at a responsible level equivalent to Clerk C, or college. Office of Dean of Faculty of Arts and Sciences. Deadline, 12/15.

CLERK-TYPIST B, \$6,432 per year--High school graduate plus one year clerical experience or college. Swem Library, cataloging department. Deadline, 12/20.

CLERK-MESSENGER B, \$6,144 per year--Completion of two years of high school or equivalent plus one year of experience in work related to duties of the position. Additional education or experience may substitute on an equivalent time basis. Must also have valid Virginia driver's license. Campus Post Office. Deadline, Jan. 2.

LIVE MODEL, unclassified, part time--\$4 per hour, 6-10 hours per week. Tuesdays and Thursdays and other times as needed to pose for figure drawing class. Fine Arts Department. Deadline, Jan. 11.

CLERK STENOGRAPHER B--\$7,032 per year. High School graduate with one year of clerical experience or college. Department of music, Deadline, 12/13.

CLERK--unclassified, part-time, \$3.50 per hour, beginning Jan. 3, 1979. Hours 12 - 5 p.m., Tuesday through Saturday during regular school year and other times as required. Will work in duplicating services. Audio Visual Department, Swem Library, Deadline, 12/17.

Exhibits

SWEM LIBRARY--Zollinger Museum December 5-January 5--"Christmas in America"

Published weekly by the Office of University Communications during the academic year, except when the College is in recess, and twice each month in June, July and August.

Barbara Ball, editor
Publications Office, production News, photographs and advertisements should be sent to the News Office, 308 Old Rogers Hall, Ext. 4331, 4371.

The deadline for all submissions is Wednesday at 5 p.m. for publication the following Tuesday.