

William and Mary NEWS

Volume IX, Number 25
Tuesday, March 24, 1981

A WEEKLY NEWSPAPER
PUBLISHED for and about the FACULTY, STUDENTS
and STAFF of the COLLEGE of WILLIAM and MARY.

Non-Profit Organization
U.S. Postage PAID at Williamsburg, Va.
Permit No. 26

Visitors Board Sets Fees

In order to bridge the gap between state appropriations and the critical needs of three areas of the College - libraries, computer facilities and instructional equipment - the Board of Visitors, meeting on campus Saturday, voted to add an academic support fee next year. A fee of \$80 will be charged Virginia residents; \$320 to out-of-state students.

Tuition and general fees at the College will increase by \$150 next year for Virginia students and \$440 for out-of-state students. The total next year will come to \$1,334 for Virginia residents and \$3,368 for out-of-state students.

The average cost of room and board will rise next year by \$56 for everyone, which will bring the annual cost of room and board to \$2,345. As with the academic support fee, inflation was cited as the need to impose this increase.

The student activities fee will rise by \$9; the intercollegiate athletic fee by \$22 and the student health and counseling fee by \$12.

The Board of Visitors also announced faculty promotions which will be effective September 1.

A letter to students from William J. Carter, Vice President for Business Affairs, explaining the new fee structure, and a list of faculty promotions are carried on P. 3.

Greenawalt to Give 1981 Cutler Lecture

R. Kent Greenawalt, Cardozo Professor of Jurisprudence at the Columbia University School of Law, will deliver the 1980-81 Cutler Lecture at the Marshall-Wythe School of Law at the College of William and Mary at 4 p.m., Thursday, March 26.

Greenawalt, who will be introduced by Frederick Schauer, Cutler Professor of Law at Marshall-Wythe, will take as his topic, "Silence as a Moral and Constitutional Right."

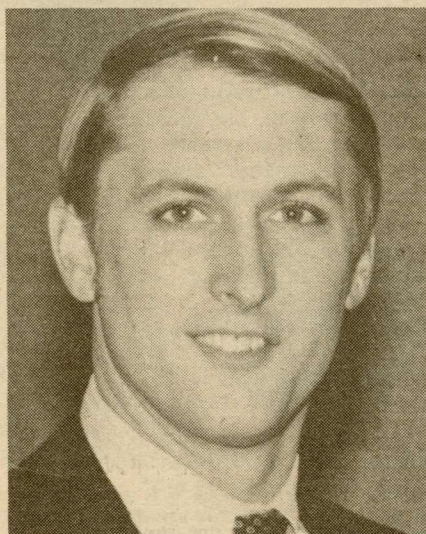
The address of welcome for the program will be given by William B. Spong, Jr., Dean and Woodbridge Professor of Law.

This lecture revives the Cutler Lectures Series, which has not been active since 1944.

The public is invited to attend. Greenawalt has been a member of the faculty at Columbia since 1965. He has been a visiting professor at Stanford Law School and has been Visiting Fellow at Clare Hall, Cambridge and All Souls College, Oxford.

In addition to his academic appoint-

Continued on P. 7



Career Exploration Day Draws Alumni Back

Alumni have responded enthusiastically to the call from the offices of Career Planning and Placement to act as counselors at Career Exploration Day, Saturday, March 28.

Planned in cooperation with the Society of the Alumni, the program will include 18 panel presentations on various career fields.

Pictured above are three alumni panelists, left to right, Nancy K. Falk '50, a member of the Fairfax, Va., Board of Supervisors; Austin L. Roberts, III '69, president, First Peninsula Bank & Trust; and Judith Baroody '75, WVEC-ABC TV, Norfolk.

Bellini Lectures Will Begin Thursday

Francois Rigolot, professor of Romance Languages at Princeton University, and Robert J. Clements, a member of the Comparative Literature Department at New York University, will deliver the two Bellini Lectures this spring.

Rigolot will speak on "Michel De Montaigne, Inventor of the Essay," at 8 p.m., Thursday, March 26 in the Botetourt Theatre of Swem Library.

Clements, who will take as his topic, "Michelangelo's Poetry as Key to his Art," will speak at 8 p.m., Tuesday, April 7, also in the Botetourt Theatre.

The Royal Visit

Plans Changed For May 2

Modifications have been made in the schedule announced earlier for the visit on May 2 of His Royal Highness, the Prince of Wales to the College.

At the request of the British Embassy and the Department of State, the special Convocation honoring the Prince has been moved to Phi Beta Kappa Memorial Hall. Originally, William and Mary Hall had been designated as the site of the Convocation. The change means that the audience will be limited on an invitation-only basis to approximately 800 invited students, faculty and staff, and special guests.

In addition, the Prince of Wales will arrive at about 12:30 p.m., 15 minutes

The lecture series is named for Charles Bellini of Florence, who was named to the first American chair of modern languages at the College in 1779. This is the first year for the series, which planners hope will be a continuing project. The Bellini lecture series is sponsored by the five language houses on campus, the Department of Modern Languages, the Student Activities Council and the College Lecture Committee.

Rigolot held the Jonathan Edwards Preceptorship at Princeton from 1974-1977. He was awarded a

Fellowship for Independent Study and Research by the National Endowment for the Humanities in 1979-80.

A major contributor to his field, both through publications and lectures.



Francois Rigolot

Rigolot is the author of three books, "Les Langages de Rabelais," 1972; "Poetique et Onomastique," 1977; and with others, "Semantique de la Poesie," 1979.

Rigolot's lecture is timely this year since it marks the 400th anniversary of the first publication of the essays of Montaigne.

Clements is the author of 20 books on literature or art published in the United States and Europe. Over 250 of his articles have been published on four continents.

Microscope Gives Scientists 3-D View of Organisms

by Fred Biggs, Director
Office of Public Information, VIMS

"It makes a gnat's eyelash look like a grain silo!" is how one student put it, referring to magnification capabilities of a scanning electron microscope (SEM) used in biological research at the Virginia Institute of Marine Science.

Seven VIMS graduate students are being trained to operate the SEM in a new marine science course being taught by Frank O. Perkins, a VIMS assistant director and its biological oceanography division chief.

With magnification capabilities from 5X to over 100,000X, the SEM is an important investigative tool that enables scientists to observe structural details of a wide diversity of biological and non-biological entities, according to Perkins. It complements the Institute's transmission electron microscope (TEM) because it reveals the surface features, connections and shapes of tiny organisms, cells, and small parts of large organisms.

The transmission "scope," also capable of magnifications up to 100,000X and beyond, is normally used to observe a section (slice) of an organism or cell, Perkins said. "Both are necessary if we are to characterize and distinguish very small organisms, for example disease-causing ones, where we hope to develop measures for their control.

Perkins and his colleagues recently applied the SEM and TEM to an investigation of marine blue-green algae, describing in detail the species, *Synechococcus*. Scheduled to appear soon in the *Canadian Journal of Microbiology*, the work provides the first detailed ultra-structural account of one of the unicellular blue-green algal species which have recently been recognized to be of major importance in marine photosynthesis of U.S. coastal waters.

When asked the differences between an ordinary light microscope and an electron microscope and how the latter is capable of such greater projection of detail and magnification, Perkins indicated that the primary difference has to do with each instrument's radiation source and its control.

"The light microscope," said Perkins, "is capable of resolving details of about 0.2um (0.00008 inch), at some 1,000 times magnification, is limited by the relatively long wave length of the light source it uses, whereas the electron scope is not limited by the wave length of the radiation source."

"As a result," explained Perkins, "the SEM reveals 1,000 times more detail than the light microscope, and the TEM reveals 10,000 times more detail." This ability to distinguish detail is the most important factor," asserted Perkins.

In other areas, said Perkins, the two have many similarities. Each has an energy source — a light bulb in the one, and an electron gun similar to that in a TV set in the other. The light microscope uses glass lenses, while the electron variety uses electro-magnetic lenses to control the electron beam.

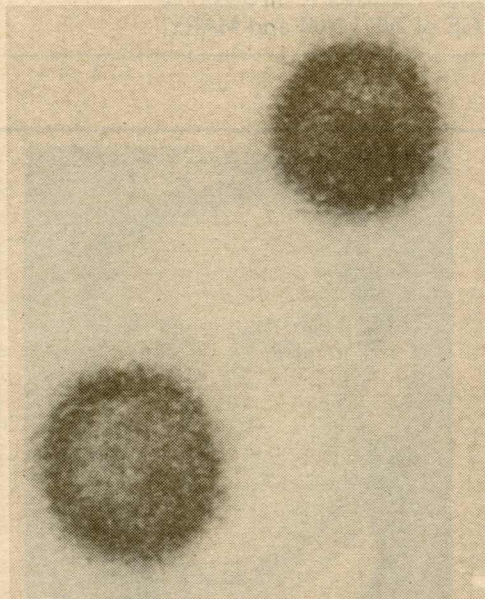
The physical similarity ends abruptly at this point. The light microscope sits on the corner of a small laboratory table; its electronic cousin and assorted components require an entire room. Most people, at one time or another,

Boathouse Hours

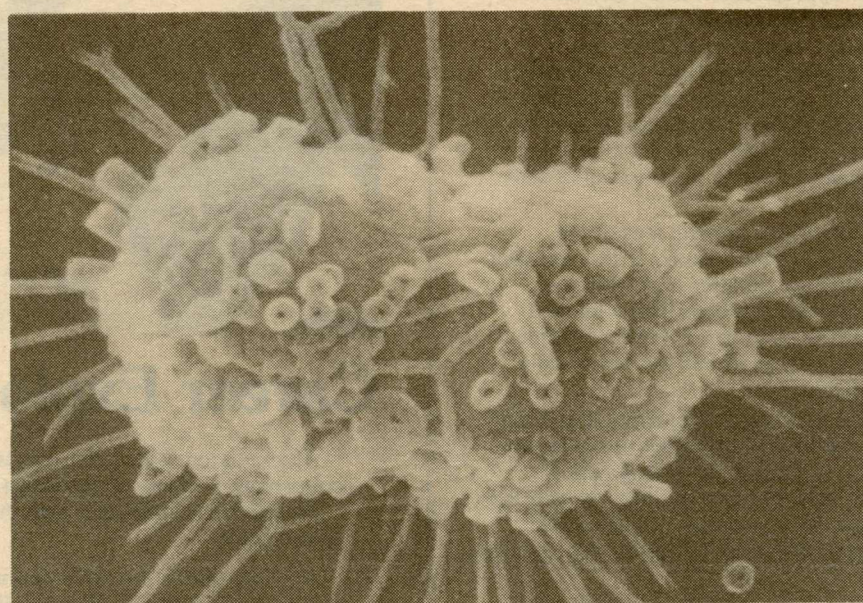
The boat house will be open until the end of reading period. Canoes, kayaks and sail canoes may be checked out for use on Lake Matoaka. A College ID is required. The hours will be: Monday-Friday 3-5 p.m., Saturday and Sunday, 11 a.m. - 5 p.m.

have toyed with a microscope, but in the hands of the unskilled, an electron microscope could require a \$10,000 repair job if certain buttons are punched out of sequence.

"One of our goals in the course," said Perkins, "is to teach the students the checklist necessary to properly operate the SEM and to avoid malfunction due to operational error. More importantly, they are learning techniques of specimen preparation and the SEM's range of applications."



Blue-green algae are important marine organisms in the food chain of Chesapeake Bay fish and shellfish. Less than 2 microns long, the details of this tiny organism can only be discerned by using the transmission electron microscope (TEM) as shown top right, or the scanning electron microscope (SEM) at bottom, right. Directly above is the view of the algae using an ordinary light microscope.



Perkins Preeminent in Field of Protozoology

A Charlottesville native who earned academic credentials at the University of Virginia (B.S. biology, 1960) and Florida State University, (M.S. zoology, 1962; Ph.D. experimental biology, 1966), Perkins has since earned pre-eminence in the field of marine protozoology.

Using electron microscopy, his studies of a local oyster disease organism *Dermocystidium marinum* led to its taxonomic reclassification. The International Committee on Systematics and Evolution of the Society of Protozoologists subsequently gave it a new name, *Perkinsus marinus*, as a way of honoring his work.

In addition, the Committee established a major new taxonomic grouping, *Perkinsea*, to accommodate the unique group of organisms.

"Dermo," first described in 1950, was thought by scientists of that day to be a fungus. Perkins discovered a previously unknown stage of its life cycle, a flagellated form containing organelles characteristic of a group of protozoa called the Apicomplexa. Other organisms in this group cause malaria and livestock diseases.

"It is important to know how organisms relate to one another, because those with enough similarities to form a taxonomic groups, at least at the lower levels, tend to act and respond to stimuli similarly," said Perkins.

"When we define a disease organism accurately enough to locate the

taxonomic group to which it belongs, the entire fund of knowledge relative to the group becomes available to the investigator as potentially applicable information for its control.

"With respect to estuarine and marine ecosystems, we have to know the players in the game if we are to

than there are in the larger-size groups. Each is an entity capable of enormous possibilities, either beneficial ones — such as the tiny phytoplankters which provide most of the sea's photosynthetic production — or disease organisms that retard the yield of valuable seafood.

"The ultimate refinement of our knowledge of the ecosystem will be based upon the records we have of all

the species involved including the smallest ones. The scanning electron microscope, along with the TEM, removes the blinds that have denied scientific observation of the structure of minute organisms until recently"

The VIMS transmission electron microscope was purchased soon after Perkins was appointed to the research staff and faculty in 1966. Since then he has used it in morphological studies of marine algae, protozoa, bacteria, fungi and other microorganisms. Recent studies of the oyster disease MSX (*Minchinia nelsoni*) has brought him into association with scientists studying similar oyster pathogens in Europe and Australia.

He has presented research papers in Germany, France, Australia, and England of his findings on the relationships between these organisms, developing an association with foreign colleagues that has broadened the research on Virginia oyster diseases into a world-wide effort.



Frank Perkins

understand the game, as well as the role of humans in it. The name of the game is "how does the ecosystem function? There may be more species of marine organisms which are identifiable only through electron microscopy

Inflation Pushes Up Fees and Tuition for Next Year

TO: All Students of the College March 21, 1981

FROM: William J. Carter
Vice President for Business Affairs

SUBJECT: Tuition and General Fee, Room, Board, and

*Tuition and General Fee, Room, Board,
and Other Fees for 1981-82*

At its meeting on March 21, 1981, the Board of Visitors of the College of William and Mary approved changes in the Tuition and General Fee, and in Room and Board fees for 1981-82.

Requirements for the educational program and supporting services have been evaluated carefully by the President and his administrative officers for the year 1981-82.

The 1980 General Assembly adopted an appropriation act which included appropriations of General Fund and Non-General Fund revenues that reflected the intent of moving, over several years, toward a ratio for each State college and university of 70% from General Funds and 30% from Non-General Funds, the eventual attainment of which is scheduled for 1981-82. General Funds are those produced by taxes, and Non-General Funds are those produced by the allocation for tuition and debt service within the Tuition and General Fee paid by students or their parents.

Charges for 1981-82 are as follows:

Tuition and General Fee (Not including fees for room and board, which are listed below)

For Virginia Students:

For full-time students, an increase of \$75 (12.7%) per semester, from \$592 to \$667, for both undergraduate and graduate students.

For part-time students, an increase from \$40 to \$42 per semester hour (5%) for both undergraduate and graduate students.

For Out-of-State Students:

For full-time students, an increase of \$220 (15%) per semester from \$1,464 to \$1,684 for both undergraduate and graduate students.

For part-time students, an increase from \$98 to \$102 per semester hour (4%) for both undergraduate and graduate students.

The allocation for Tuition alone is increased by \$7 per semester to \$249 for Virginia students. For out-of-State students, the increase is \$32 per semester to \$1,146. In each case, this amounts to a 2.9% increase, to comply with the 70-30 funding requirement.

Since it is not possible to operate the College with such a minimal increase, it is necessary that we make the following two additional allocations of the Tuition and General Fee for the first time in 1981-82.

The Campus Center Allocation of \$18.50 per semester (\$14.50 of which is reallocated from the General Auxiliary Enterprise Services, below) is necessary to support the Campus Center in its new status as an Auxiliary Enterprise, which status requires that it be self-supporting, with no funding from the General Fund of the State. The Center is being used in a broadened student activities program for a student body which has tripled in size since its construction.

The allocation for Academic Support will amount to \$40 per semester for Virginia students and \$160 per semester for out-of-State students. An allocation has become necessary because normal State appropriations are not sufficient to meet basic needs of three indispensable academic activities in which the funding situation has reached almost crisis proportions—libraries, computer facilities, and instructional equipment. Funds derived from this source are not, nor are they intended to be, subject to funding under the 70-30 concept noted earlier.

Student Activities will receive \$4.50 (23.7%) more per semester from each full-time student, both in-State and out-of-State, in support of the overall program of student activities, including the intramural and recreational sports program, for a total of \$23.50 per semester.

The allocation for Intercollegiate Athletics is increased by \$11 (8.5%) per semester from each full-time student, to a total of \$140.50 per semester, with this increase going toward funding the men's and women's athletic programs, and to be more responsive to the requirements of Title IX. The increase is divided into \$6 for Men's Athletic Association and \$5 for Women's Athletic Association.

Most of the increase for Student Health and Counseling Services is attributable to normal increases in those costs which are inflation-driven. The resulting increase is \$6 per semester, from \$57 to \$63, or 10.5%.

The Student Bus Service Allocation will increase \$2.50 per semester, from \$17 to \$19.50 per semester, or 14.7%. Inflationary increases in the costs of operation dictate this increase.

The General Auxiliary Enterprise Services Allocation will be reduced to \$74.50 per semester, a 16.3% reduction. Funds from this allocation will be used, primarily, to provide essential major capital improvements which are not, and cannot be, funded from State General Fund sources. (The reallocation of \$14.50 per semester will be transferred to the Campus Center allocation, above.)

The Debt Service Allocation will remain unchanged at \$38.50 per semester.

ROOM RENT

The increase per semester depends upon the type of accommodations chosen. The present rentals range from \$475 to \$540 per semester; the \$55 to \$60 increase results in a range of \$530 to \$600 per semester, an increase of from 11.1% to 11.5%.

Current rentals are not sufficient to cover increasing operating costs, which include a substantial increase in fuel and utilities.

BOARD FEE

There is an increase of from \$38 to \$77 per semester, depending upon the particular meal plan selected. The present fee for the 20-meal plan is \$524. The increased fee will be \$584, or 11.5%. The fee for the 15-meal plan will be \$521; the fee for the 10-meal plan will be \$377.

Dramatic increases in the cost of food, as well as that of labor, utilities and essential equipment replacement necessitate the increased board fee.

While we regret these increases, they are nevertheless essential, and have been kept to an absolute minimum. The fees for 1981-82 have been established after considerable study, and consultation with student representatives whose viewpoints have been taken into account carefully by the Administration and the Board of Visitors of the College.

This memorandum is being circulated to inform all members of the College Community, so that students and, where appropriate, parents and guardians, may be informed directly of those changes in our fee structure for 1981-82.

Visitors Approve Faculty Promotions

Upon the recommendation of the President, the Board of Visitors of the College of William and Mary has approved the promotion of the following members of the Faculties of the College, effective September 1.

Associate Professor to Professor

M. JOY ARCHER, physical education for women
NATHANIEL Y. ELLIOTT, English
THOMAS M. FINN, Religion
S. STUART FLANAGAN, School of Education
KEVIN E. GEOFFROY, School of Education
ROBERT MAIDMENT, School of Education
DONALD J. MESSMER, School of Business Administration
HANS O. TIEFEL, Religion

Assistant Professor to Associate Professor

DAVID P. ADAY, JR., sociology
WILLIAM D. BARNES, fine arts
HUGH B. EASLER, mathematics and computer science

KAREN A. EMDEN, School of Business Administration
JAMES E. GRIFFIN, modern languages and literatures
MARLENE K. JACK, fine arts
BRUCE A. McCONACHIE, theatre and speech
LARRY RABINOWITZ, mathematics and computer science
RONALD RAPOPORT, government
WILLIAM E. RICE, School of Business Administration
WILLIAM R. STEWART, School of Business Administration
JEAN CONOVER WYER, School of Business Administration

Politics in El Salvador

The government department at the College will sponsor an open discussion of the political situation in El Salvador, at 4 p.m., Wednesday, March 25 in the Little Theatre of the Campus Center.

Speakers will be Kevin-John McIntyre, political officer, Office of Caribbean Affairs, Department of State; and George W. Grayson, member of the Virginia House of Delegates and professor of government.



Cabell Letter Received

William D. Eppes '39 of New York has presented the College a letter by James Branch Cabell, the noted author who studied at William and Mary in the late 19th century. President and Mrs. Graves (left) are shown turning the gift over the Librarian Clifford Currie (right) who is shown with Mrs. Currie (second from right). The letter represents a significant addition to the College's

Stacy Puls Wins Award

Miss Stacy Kimbark Puls of Northfield, Ill., has been awarded the 1981 William Cross Ferguson-Harry L. Blair Graduate Scholarship in publishing.

The scholarship assures Miss Puls admission to the Radcliffe College Summer Course in Publishing Procedures and is in the amount of \$1,500 towards tuition.

Miss Puls, a senior, is an English concentrator. She was recently elected to Phi Beta Kappa. Active in campus publications, she is co-editor of the features section of the student newspaper, *The Flat Hat*; co-editor of fiction for the *William and Mary Review*, the campus literary magazine; and vice president of Omicron Delta Kappa leadership fraternity.

The scholarship is administered by the William and Mary Committee on Training in Publishing Procedures, which also sponsors a seminar in publishing for William and Mary students. The next seminar will be held here in November.

The Ferguson Blair Scholarship honors two men from the field of communications. William Cross Ferguson was a 1916 graduate who enjoyed



Stacy Puls

a long and successful career in American book publishing. He was editor-in-chief, secretary and later president of the American Book Company and also served as director and treasurer of the American Textbook Publishers Institute.

Blair, a member of the class of 1929, was for many years a public relations executive with General Motors. Blair left a bequest to the College in his estate to encourage students with a talent for writing to further their goals in the field.

Annual Spring Performance

Mermettes: 'It's All in a Word'

by Keith J. Harrison

The Mermettes, William and Mary's aquatic arts group, will present their annual spring performance entitled "It's All in a Word" at Adair pool March 26, 27 and 28 at 8:15 p.m. with a matinee on the 29th at 2 p.m.

Admission is free.

This year's show features thirteen compositions all of which are choreographed by Mermettes members. Each of the numbers have one word titles which capture the composition's essence, hence the title, "It's All in a Word." The Mermettes have combined music, costumes, lighting effects and synchronized swimming to carry out the one word themes.

Rhonda Thompson choreographed "Amenos" which features five Mermettes performing to the song "Peaceful" as done by Percy Faith. Amenos is the Greek origin of the English word "wind" and combines with the music and movements to leave impressions of wispy streams of air.

"Promenade" is the title of senior Janis Gibbs' composition which feature three experienced Mermettes and the music of George Gershwin.

The contemporary jazz of Tom Cat is the background for "Jazzmatazz." Choreographed by senior Mermette captain Sioux Prince, this number feature some interesting deck work.

A Las Vegas stage show was the inspiration for Witt Pratt's composition entitled "Vegas," while "Hoedown" choreographed by Lisa Thompson

and Marcia Milbrath, take many of its movements from more traditional folk and square dances.

"Otter," a composition by senior Moria Holly uses visual effects to show the playfulness of these water creatures.

Mermette veteran Keith Havens choreographed "Shadows" which is the show's only all male number. In Havens' composition, he advances the premise that one's shadow does not always represent a true reflection.

"Searching" is a solo number composed and performed by Chris

Wrigley which has already qualified for the National Institute for Creative Aquatics (NICA) National Conference.

Other compositions to be performed are choreographed by Jennifer Wrigley, Janet Cratsley, Jean Latu, Lisa Long and Kathy Bonner.

The finale, "Afterglow," is a special number which the Mermettes will be performing at the NICA Conference here April 8-11.

The Mermettes are coached by Marcia Milbrath.



U.N. Delegates

Members of the International Relations Club participated in Ferrum College's first Model United Nations program, Feb. 27-28. The College's delegation is pictured with Donald F. McHenry (third from left), former United States Ambassador to the United Nations and Joseph T. Hart, President of Ferrum College. McHenry was keynote speaker at the conference. William and Mary students, l-r, are Penny Devine, Mark Rogers, Janet Porter, president of the International Relations Club, Andrea Johnson and Dave Vaughn. Several members of the Club including Janet Porter, Dave McIntyre, Ben Mays, Andrea Johnson, Jon Graft and Julie Wiley are planning to attend the National College Model United Nations in New York City, April 15-18, as a representative delegation from Madagascar.

Martin, Zaccaria Going Abroad Next Year on Scholarships

Two seniors have won scholarships for study and teaching abroad next year.

Susan Frances Martin of Culver, Ind., has won a Fulbright scholarship to study German at a teacher's college in Freiburg, West Germany. Joseph J. Zaccaria will be teaching conversational English to high school level students in France under a French Government Assistantship.

Martin hopes during her year abroad to develop a system for teaching fourth, fifth and sixth grade children a foreign language, which could be used in schools in the United States.

A German major, Martin spent several summers at a camp for 9 to 13-year-olds in Indiana, many of whom spoke Spanish as their native language. She was impressed by how quickly the children picked up English. When she went to a Career Planning workshop on campus and expressed an interest in working with children and an appreciation of language, it was suggested she combine the two. The study plan she will pursue in Germany is a result of combining her two interests.

A tutor in the Adult Skills Program on campus, publicity and social chairman for Gamma Phi Beta sorority, and a wrestling manager, Martin is also an active member of the William and Mary Theatre and a member of the Recorder Consort. She will be making a spring trip overseas with the choir which leaves May 19 on its second European tour.

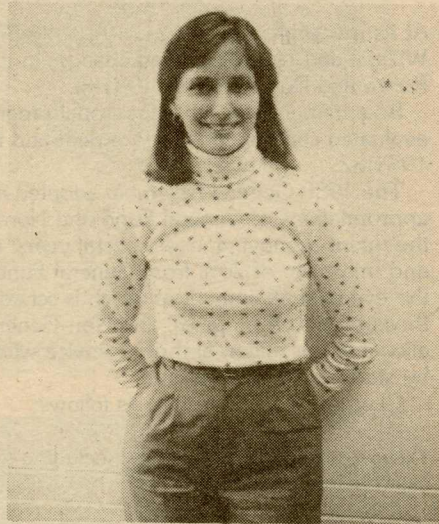
After she returns from Germany, Martin hopes to work as a language teacher in an elementary school.

Zaccaria, a French and economics concentrator, is active in soccer and football intramurals and is also a news and music announcer for WCWM radio station. He is a member of Pi Delta Phi French honorary.

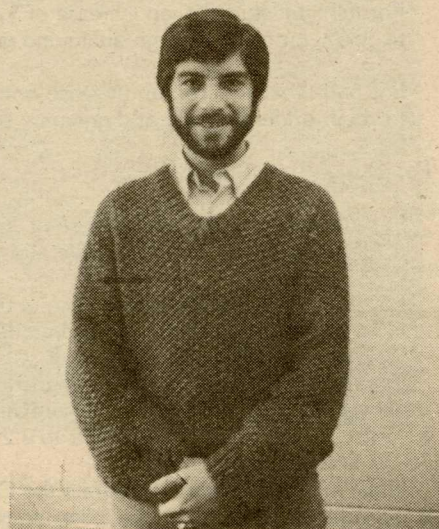
He spent his junior year at Montpellier with the William and Mary program abroad and has been a drill instructor for the intensive elementary

French course. He is interested in the historical development of the French language and, if he has time next year, would like to do some research on the subject.

Twenty men and 20 women are chosen nationally to participate in the French government's assistantship program.



Susan Martin



Joseph Zaccaria

\$116,000 Bequest Made by Alumna

The College has received a bequest totaling approximately \$116,000 in cash from the estate of Martha Claiborne Stephens of Cedar Bluff in Tazewell county, a 1928 graduate.

The College has also received several pieces of antique furniture and two abstract paintings, "Gypsy," and "Mistress," by Alvin Sella, from the Stephens' estate.

Mrs. Stephens and her husband, Dr. Wilson P. Stephens, a physician and a graduate of Randolph-Macon College, divided their estate between their two undergraduate alma maters. Dr. and Mrs. Stephens died, days apart, in December, 1980.

Cinema Classics Seek New Officers

All full-time faculty and staff are invited to place their names in nomination to serve as operating officers of the Cinema Classics Society. Nominations are being accepted until March 29 for president, series coordinator, treasurer and secretary. The term of office is from April 15 to April 15, 1982. Nominations may be made at any Sunday night film showing, or by contacting Marion Brown, extension 4274.

Notebook

Talk on Middle East

Mrs. Wafaa Abou-Negm Marei, a visiting faculty member in government this semester will give a talk on the politics of the Middle East at 7 p.m., Tuesday, March 24 in the Botetourt Theatre of Swem Library.

Mrs. Marei has published articles and lectured on problems and prospects for the Middle East in the modern world, and the effects of the women's movement on the status of women in that part of the world.

Amazonian Ecosystems

Emilio Moran, assistant professor of anthropology at Indiana University, will speak at 7:30 p.m., Tuesday, March 24 in Washington Hall 100 on "The State of the Art in Amazonian Ecosystems Research."

His talk is open to the public. There is no admission charge. This lecture is being sponsored by the Anthropology Club of the College.

Sale, Sale, Sale

The Biology Club's annual plant sale will be held March 30, 31, and April 1, in the Campus Center Lobby from 9 a.m. to 5 p.m.

Lots of inexpensively priced, beautiful plants to decorate the office, apartment, or dorm room.

Hurry, so you can pick out the plants you've been looking for! "We'll give you our green in change for yours."

Crafts Shop Events

The Crafts Shop at the Campus Center has announced several workshops.

A ceramics workshop will be held on two Saturdays, March 28 and April 4 from 12 noon to 3 p.m. At the first session participants will make items and at the second, glaze them.

Dough sculpture, with emphasis on Easter animals, will be taught at a workshop Sunday March 29 and April 5 from 10:30 a.m. to noon.

Workshops on Easter eggs will be held from 2 - 5 p.m., on Friday April 3 and 10; and 10 a.m. to noon on Saturday, April 4 and 11.

All workshops are free to faculty, staff and students and all supplies will be provided.

Only a limited number of blown eggs will be available for the workshops on Easter eggs and participants are asked to bring their own.

Further details on the workshops listed may be obtained by calling the Crafts Shop at ext. 4041.

Asian Medicine

Donald Dawe, of Union Theological Seminary, Richmond, will give a program on Tibetan medicine at Asia House at 7:30 p.m. Thursday, March 26.

April Hours

President Graves has scheduled five "Student Hours," during April for those who wish to come by his office and discuss any topic of their choosing. No appointment is necessary. The President will be in his office April 1 from 3-4 p.m., and from 4-5 p.m. on April 6, 14, 23 and 29.

Program on Paraguay

Cathy O'Donnell, a junior who lived for a time in Paraguay, will present a talk on Paraguayan music and culture at 8 p.m., tonight, Tuesday, March 24, at the Spanish House. Refreshments will be served.

Career Seminars

Nancy Gofus, a national account manager at AT&T and an alumna, will present a seminar entitled "Careers in Marketing and Management." Ms. Gofus works in the marketing department of AT&T and is responsible for Bell System revenues of \$30 million. The session will be held at 4 p.m. Thursday, March 26, in Botetourt Theater of Swem Library.

A seminar on "The Dual Role: Career and Marriage" will be presented by Ms. Gofus at 8 p.m., Thursday, March 26, in the Dodge Room of Phi Beta Kappa Memorial Hall. For more information on either of these seminars, please contact the Office of Career Planning, ext. 4427.

Bergman and the Classics

James Baron of the classics department will give a talk on "Ingmar Bergman and the Classics" at 7 p.m., Thursday, March 26 in Morton 39. The discussion will concern the modern screenplays of Bergman as they relate to ancient literature.

Art Sale

There will be an animation art sale in the Campus Center lobby, March 30, 31 and April 1 from 10 a.m. to 7 p.m.

Lecture, Workshop By Bean In April

Bennett Bean, professor of ceramics at Wagner College, Staten Island, N.Y., will give a lecture and workshop April 10-11 in conjunction with the exhibition of his work which is currently on display in Andrews Hall.

Bean will give a slide lecture illustrating the development of his earthenware pit-fired vessels and will share his personal approach to "Decoration and Other Things," at 7:30 p.m., Friday, April 10 in Room 201 of Andrews Hall. The lecture is free and open to the public.

A demonstration workshop including throwing, decorating and pit-firing, will be held from 9 a.m. to 5 p.m., Saturday, April 11 at the old power plant ceramics studio located behind the College Bookstore on Jamestown Road.

There is a \$25 admission charge for the public to attend the Saturday workshop, but it is open without charge to students of the College.

Further information concerning the workshop may be obtained from Marlene Jack, department of fine arts.

Bennett Bean's work has been exhibited extensively in the United States and is included in the permanent collections of the Newark Museum and the Whitney Museum of American Art, New York. Bean was recently awarded a Craftsmen's Fellowship Grant from the National Endowment for the Arts.

Bean's work in Andrews Hall may be viewed Monday through Friday from 8 a.m. to 5 p.m.

Borthwick on Labor

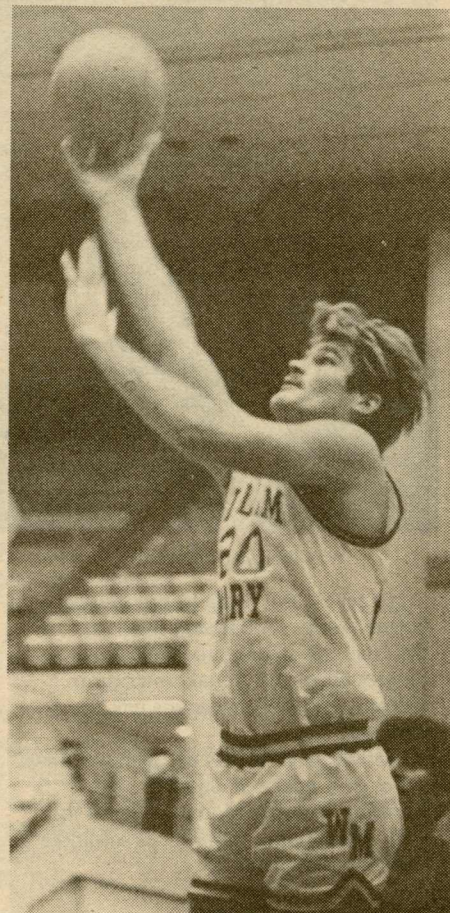
Robert Borthwick of the department of government, Leicester University, England, will speak on "The Crisis in the Labor Party in Britain." at 3:30 p.m., Friday, March 27 in Morton Hall 20.

Borthwick has taught in the United States and Great Britain and has also published both here and abroad. He describes himself as a "discontented member" of the Labor Party and is expected to present both a personal and professional view of his subject.

Borthwick's lecture is sponsored by the department of government

Senior Countdown

Seniors, start the final countdown to graduation at the "SENIOR COUNT-DOWN PARTY," tonight, Tuesday, March 24, at the Pub from 9 p.m. to 1 a.m. For a \$1 cover charge, dance to the music of D.J.'s and drink golden beverage for only 25c a cup! The party is open to members of the senior class and their guests.



Golden Buckets

William and Mary basketball center Kenny Bowen's performance in a televised game against Old Dominion University last month earned him the game's Most Valuable Player honors. Because of this selection, the College last week received \$1,000 in scholarship funds from Chevrolet, along with a specially designed certificate congratulating Bowen and the College.

Swim at Adair

Free swim on Monday and Thursday afternoons from 3:30 to 5:30 p.m., has been added to the recreational swim schedule at Adair pool.

The pool is open for recreational swimming Monday through Thursday from 9-11:30 p.m., Fridays, 7-9 p.m., and Saturday and Sunday, 1-4 p.m.

The pool is open from 7-8 a.m. for early-bird swimmers and faculty-only hours are Monday, Wednesday, and Friday, 10-11 a.m., and Tuesday and Thursday, 8:30-9:30 a.m.

Position Available

Women's Junior Varsity Tennis Coach. Salary: \$2,000. Fall and Spring seasons, two hour practices Monday through Friday, August 25 - November 13 and February 1 - April 30. Applicant must be an experienced player and coach and be free to travel with the team on weekdays and or weekends.

Applicants send resume complete with reference and academic credentials to: Mildred B. West, Women's Athletic Director. Closing date for applications: April 5.

EEO/AA

The Crisis in El Salvador

The Committee in Solidarity with the People in El Salvador, from Norfolk, will present a slide show entitled "El Salvador: A Country in Crisis," at 8 p.m., Wednesday, March 25, at the Spanish House.

A discussion period will follow the program and refreshments will be served.

Physics Colloquium

Bernard S. Finn, chairman of the department of history and technology and curator of the department of electricity for The National Museum of American History, Smithsonian Institution, will be guest speaker at the physics colloquium at 4 p.m., Friday, March 27 in Small 119. Coffee will be served in the conference room at 3:30 p.m.

Finn will take as his topic the science and technology of the 19th century submarine cable.

Sunday Concert Will Feature Canning, Smith

If you'd like to hear Duke Ellington's "Don't Get Around Much Anymore" played the way they used to play it in New Orleans coffee houses or Richard Rodgers' "It Might as Well Be Spring," performed with the same charm it had in "State Fair," - have we got a concert for you!

This one-time special concert of American Classics will be presented at 3 p.m., Sunday, March 29, in the Campus Center Ballroom, sponsored by the music department.

Jazz interpretations of music by Gershwin, Porter, Rodgers, Ellington, Bill Evans, Dave Brubeck, Herbie Hancock and others will be played by Bain M. Smith, piano and Craig N. Canning, saxophone.

The uniqueness of Sunday's concert lies both in the treasury of music that will be played and in the players, both of whom are equally at home as performer and academicians.

Bain is currently an instructor of jazz piano at the Shenandoah Conservatory and Assistant Headmaster at Foxcroft School in Middleburg, Va. Canning is associate professor of history and a Chinese scholar. Bain and Canning have known each other for some time; they made plans for the concert when Canning gave a talk on China recently at Foxcroft. But Bain is moving to California so another concert is unlikely.

Ms. Ripple Joins College Staff

Susan Conn Ripple has been named Assistant Director for Annual Support in the Office of University Advancement.

Ms. Ripple replaces Jacquelin Crebbs, who was recently named Director for Annual Support at the College. In announcing the appointment, Ms. Crebbs said that Ms. Ripple will be responsible for supervising student-staffed phonathons to solicit alumni pledges for the College's Annual Fund and will help organize fund drives for the William and Mary Parents Association which last year raised over \$53,000 in unrestricted funds for undergraduate academic programs.

The Office of Annual Support at the College is responsible for directing eight annual fund drives with combined goals of about \$600,000.

A native of Phoenixville, Pa., Ms. Ripple is a 1972 graduate of Bucknell University. After receiving a B.S. degree in education, she served from 1972 to 1975 as assistant director of admissions at her alma mater. From 1975 to 1977, she was assistant and acting director of financial aid at Ohio Wesleyan University.

Ms. Ripple received a master's degree in education from Ohio State University in 1979, during which time she was also an academic adviser for freshman and sophomore students.

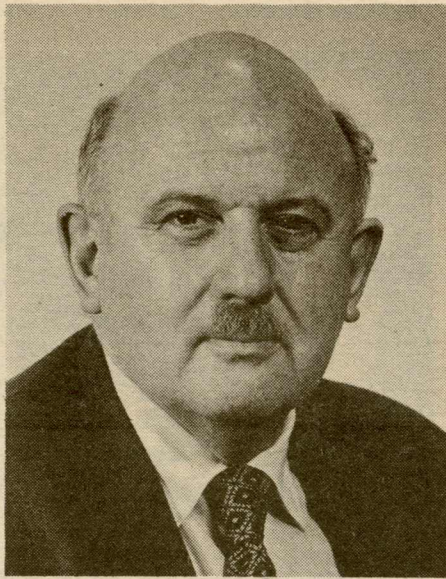
Prior to her coming to Williamsburg, Ms. Ripple served as assistant director for admissions at Ohio Dominican University in Columbus, Ohio.



Susan Ripple

Godsell Speaks Tonight in CC

Geoffrey T. Godsell, staff correspondent for the Christian Science Monitor, will speak at 8 p.m., Tuesday, March 24, in the Campus Center Ballroom on "Foreign Policy Challenges for the New Administration."



Geoffrey Godsell

His talk is the latest in the Issues Forum Series. Admission is \$1. Because the Issues program is an outgrowth of the Speakers Forum, patrons with Forum passes will be admitted free.

Godsell who serves as overseas news editor and editorial writer for the Christian Science Monitor, joined the staff of the paper in 1956 as a Middle East correspondent.

Official Memo

To: Deans, Department Heads, Directors and Supervisors Date: March 13

From: George R. Healy, Vice President for Academic Affairs
William J. Carter, Vice President for Business Affairs

Subject: Budget Overexpenditure

As we approach the end of one fiscal year and plan for the most effective uses of our financial resources for 1981-82, it is important that we understand clearly how budget overexpenditures will be handled.

If a current 1980-81 departmental budget is overcommitted at the present time, no further purchase orders or invoices will be processed against that budget unless and until the funding to cover the overexpenditure is provided by the appropriate dean or vice president. If your current budget is reported as overspent, you should contact your dean or vice president immediately, to determine whether necessary coverage funds are available for transfer to your budget.

Please note also that if your budget printouts should show an overexpenditure as of June 30, 1981, your budget approved for 1981-82 will be reduced in the amount necessary to cover the overexpenditure.

We appreciate your assistance in our annual effort to expend most effectively all the funds appropriated to us, but no more.

Sign-up Due for Half Marathon

Over 1,000 runners, from raw beginners to hardened veterans, are expected to compete in the third annual F&M Bank-Colonial Half Marathon, according to Roy Chernock, coach of the track team and director of the event.

The 13.1-mile race will begin at 1 p.m., Sunday, April 5, at William and Mary Hall. The half marathon course will cover one small loop on the William and Mary campus, one large loop outside of Williamsburg along the scenic James River and Colonial Parkway, and another small loop on campus. The course has several small hills.

"You don't have to set a world's record or qualify for the Olympic team to sign up for the half marathon," said Chernock. "It's more a question of a runner against him or herself than against all the other competitors."

Chernock emphasized that the half marathon is a popular event with both experienced and inexperienced runners. "It's easier to train for and easier to run than a full 26.2 miles. With a little dedication, motivation and training, at least four to five days a week, runners can work up to the training distance they need to finish the half marathon," he said.

Hand-crafted medallions will be awarded to the top ten finishers, the first three women finishers, the first three submasters, and the first three masters. Merchandise awards will also be given to the top finishers. All participants will receive free souvenir tee-shirts and refreshments during and after the race.

Aid stations will be posted at the four, seven and 10-mile marks and split times will be given at the one-mile, five-mile and 10-mile marks.

To register for the F&M Bank-Colonial Half Marathon, runners should obtain entry blanks at any First and Merchants branch, or send a stamped, self-addressed envelope to: Half Marathon, Box 399, Williamsburg, Va., 23185. Participants may call 1-800-446-9244 for toll-free motel information.

The registration fee for the event is \$5 per person. Deadline for registration is March 27. No late entry fees will be accepted.

"Last year we had 850 participants from all over the country," said Chernock. "This year's turnout should be even bigger."

Robert Panoff Is Forum Speaker

Robert Panoff, principal officer of MPR Associates, Inc., of Washington, D. C., an engineering firm engaged in the high technology aspects of the energy field, will be the next guest speaker at the Project Plus Forum at 7:30 p.m., Wednesday, March 25 in Millington auditorium.

Panoff will speak on "Nuclear Power: Do We Need It? Is It Safe?" as part of the overall Project Plus theme for the year "Food and Energy: Problems of Scarcity in a Hungry World."

Placement Schedule Set Thru April 3

Appointments may be made with the companies listed below in the Office of Placement, Morton 104 on the following dates:

Tuesday, March 24, most undergraduate majors; Wednesday, March 25, BBA and econ.; Thursday, March 26, MBA and law.

Appointments for the next schedule can be made in the following order: Tuesday, March 31, BBA and econ.; Wednesday, April 1, all other undergraduate majors; Thursday, April 2, MBA and law.

Monday, March 31

Federate Insurance
Virginia

Tuesday, March 31

Metropolitan Life Ins. Co.
Richmond

Wallace Business Forms
Varied

Wednesday, April 1

Indian Head Camp
Co-ed, N.Y.

Thursday, April 2

Fidelity Union Life
Virginia

Friday, April 3

Burroughs Corporation
SE.U.S.

Virginia Chemicals, Inc.
Portsmouth, Va.

The Lane Company, Inc.
Altavista, Va.

Choir to Tour March 26-30

The Choir, under the direction of Frank T. Lendrim, will give six concerts on a spring tour which will take them to Maryland, Connecticut and New York, March 26-30.

The 79 singers will present a varied program. The first portion will be devoted to sacred music and will include "Misericordias Domini" by Francesco Durante; Motet, Op. 29 No. 2 by Brahms; Alma Redemptoris Mass by Tomas Louis de Victoria; and selections from "The Peaceable Kingdom" by Randall Thompson. The choir will also include in its program works by modern American composers including Barber, Fine and Gershwin.

The Botetourt Chamber Singers, an ensemble from the choir, will sing a madrigal by Thomas Morley and "Chansons" by Paul Hindemith.

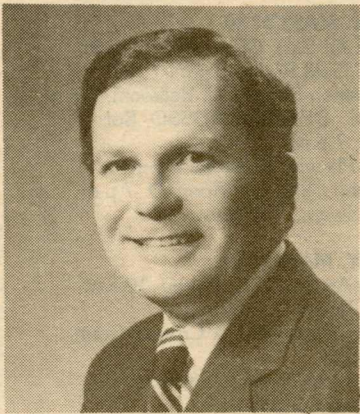
The Men of the Choir will present a collection of spirituals and "Cantate Domino" by Croce.

Tour stops will include Towson Presbyterian Church, Towson, Md.; St. Stephen's Church, Ridgefield, Conn.; Rye Presbyterian Church, Rye, N.Y.; St. Mark's, Mt. Kisco, N.Y.; and St. Dunstan's, McLean, Va.

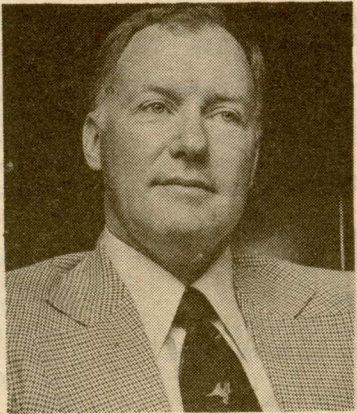
The spring tour will be a preview of the concert the choir will present later this spring in Europe. The choir will participate in commencement exercises on May 17 in William and Mary Hall and will leave May 19 for Paris where they will sing in Notre Dame cathedral. Other stops on the tour, which will mark their second European visit, will include Geneva, Switzerland; Frankfurt, Germany; The Netherlands and England. In England the choir will give a Sunday afternoon concert in Westminster Abbey and also sing in Canterbury Cathedral before returning home June 13.

The choir's European tour is being financed by the singers themselves, who have already raised \$10,000 toward the cost of the trip.

Alumni to Aid Students With Career Exploration



R.A. "Chip" Mason
President
Lege Mason Wood Walker, Inc.



James C. Windsor
Prof. of Psychology
Christopher Newport College



Charles Huxsaw
Vice President
Law Media Associated



Richard Cooper
MGR Energy Planning
R.J. Reynolds Inds.



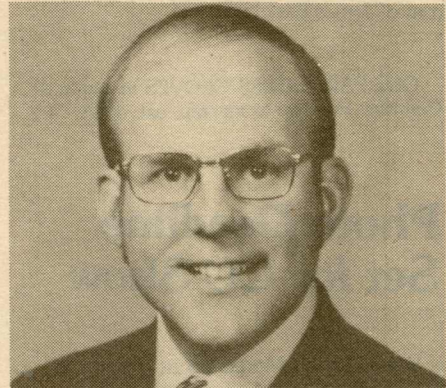
Russell J. Redmond
Redmond, Admundson & Rice



Wilford Kale
Chief, Wmsbg. Bureau
Richmond Times Dispatch



Ben Pomeroy
Marketing Dir. Colonial Life & Accident Inc.



James F. Almand
Atty., Arlington

Orientation Session to be Held in PBK

Is it true that accounting majors can have their pick of jobs once they graduate?

What's the first step toward becoming president of a bank?

Is it true that the teacher shortage is a myth? What about pay scales?

Does advancement come quicker with a small law firm or a large one?

Is there any sure way of getting into medical school?

Alumni who come back for Saturday's Career Exploration Day can expect to field these kinds of questions and many more about what it is like in the careers they are seeking to enter.

Alumni are coming back to campus to share the knowledge they have gained in their various fields and while they are engaged in counseling can expect to gather during the day, a good idea of expectations of students now in school.

The career fields to be covered will include accounting advertising and public relations, the arts, banking and investments, business administration, computer science, counseling and psychology, elementary and secondary education, energy and the environment, government and public administration, journalism/both print and electronic; law, medicine, dentistry, personnel administration, politics, publishing, sales and marketing and social services and community agencies. Each of these panels will be repeated twice.

Students who have not already signed up to participate in Career Day are asked to do so as soon as possible by contacting the Placement Office in Morton Hall, ext. 4604.

An orientation session will be held in Phi Beta Kappa Memorial Hall.

The final event of the program will be a social hour from 2:45 p.m. to 4

p.m. in Andrews Hall to provide participants and panelists an opportunity to get together and talk informally.

Alumni volunteers will include the following: Norris P. Moses '49; K. Dane Brooksher '61; Karen King Daughtrey '72; Bruce E. Russell '76; Russel J. Redmond '55; Connie Warren Desaulniers '75; Edwin C. Luther. III

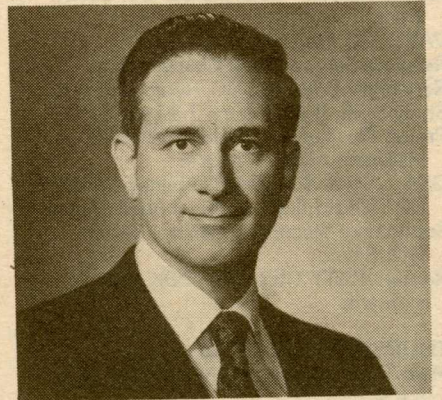
'65; Howard M. Scammon '34; Richard Owens '68; Jacqueline Siversten Woolldridge '72; Austin L. Roberts III '69; Raymond A. Mason '59; Henry T. Tucker, Jr. '72; Harry Lee Cross III '72; Richard H. Cooper, Jr. '74; Susan P. Manix '79; Linwood F. Perkins, Jr. '52; Patricia L. Timpanaro '73; Rodney L. Armstrong '74; Katherine S. Gaertner '53; and Jeff Shy '71.

Also James C. Windsor '56; Robert E. '56 and Sally B. '76 Canestrari; Sandy Fagan '72; Mary L. Passage '63;

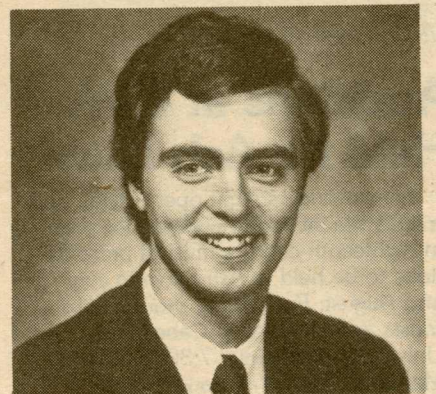
Sandra E. Rogers '76; John H. Tucker, Jr. '54; Joseph H. Nash '65; Alphonse F. Chestnut '41; Linda L. Witham '77; Stewart Gamage '72; Suzanne Wightman Doggett '80; D. Andy Purdy, Jr. '73; W. Wilford Kale '66; Judith R. Baroody '75; Denise A. Doverspike '77; J. Edward Grimsley '51; Glenn A. Gundersen '76; William R. Murphy '48;

Michael E. Schoenenberger '65; Nancy F. Terrill '71; Marvin E. West '52; Stuart Alva Smith '74; Camilla B. Spirm '66; Marion Roby Lugar '77; Denys Grant '58; Carmen Romero '53; Nancy K. Falck '50; James F. Almand '71;

George N. Grayson '76; Marcia Magill '48; Charles F. Huxsaw '68; Ann T. Ruble '77; Benjamin B. Pomeroy '68; Nancy B. Gofus '75; Richard B. Dallas '53; Mary McQuinn Sale '70; Peter R. Nickerson '68; and Purnell H. Westbrook '70.



Morris P. Moses
Mgr. of Admin.
Coopers & Lybrand



Glen A. Gundersen
Attorney
Dechert Price & Rhoads

SAVA Volunteers Offer Women Help

A group of women associated with the Williamsburg Area Women's Center has established a volunteer support service to assist victims of sexual assault. The new group, SAVA, is composed of a dozen women from different age groups and backgrounds who are ready to offer immediate practical assistance and emotional support to sexual assault victims.

They will assist victims during visits to doctors, police investigations and court trials, if needed. Volunteers have also developed channels of referral for long-term psychological counseling.

Those interested in joining as a SAVA volunteer may call the Women's Center at 229-7944 or call Ute Winston, 220-1496 or Willetta Heising, 253-0740 for further information. Victims of sexual assault who may need or want the assistance of SAVA should call the Bacon Street Hotline, 253-0111.

Oriental Art Sale

A special exhibition and sale of Original Oriental Art will be presented from 10 a.m. to 4 p.m., Thursday and Friday, March 26 and 27, at Asia House, 195 Armistead Avenue.

Greenawalt To Deliver Lecture

Continued from P. 1.

ments, his record of public service includes service as Special Assistant to the Agency for International Development, Deputy Solicitor General of the United States and Consultant to the Office of Telecommunications Policy.

Greenawalt has achieved international recognition for his writings in jurisprudence and criminal law. He has served as vice president of the American Society for Political and Legal Philosophy and is currently Chief Reporter for the Revision of the Commentary to the Model Penal Code.

The Cutler Lectures were established in 1927 by James Gould Cutler of Rochester, N.Y., to provide for an

annual lecture at the College by "an outstanding authority of the Constitution of the United States."

The first series of sixteen lectures, which ran from 1927 to 1944, included addresses by outstanding figures from both public life and the academic world, including Harold Laski, Max Lerner and Charles Warren.

After 37 years of dormancy, the Cutler Lectures have been re-established under the auspices of the Marshall-Wythe School of Law. The lecture on March 25 is the first of the modern series which is intended to follow both the spirit and prominence of the earlier series.



R.K. Greenawalt

Calendar

TUESDAY, MARCH 24

Writers Festival - Book Exhibit, CC, Lobby, 9 a.m.
 WMCF, Swem, G-1, 5 p.m.
 Ebony Expressions, CC, Little Theatre, 6:30 p.m.
 International Relations Club, Bot. Theatre, 7 p.m.
 Panhel, CC, Room C, 7 p.m.
 Covenant Players Rehearsal, Andrews Foyer, 7 p.m.
 CSA, Wren Chapel, 7:15 p.m.
 Collegiate Civitans, CC, Room D, 7:30 p.m.
 SA Speaker, CC, Ballroom, 8 p.m.
 Writers Festival, Andrews Audit., 8 p.m.
 The Czeck Philharmonic, PBK Audit. and Dodge Room, 8:15 p.m.

WEDNESDAY, MARCH 25

Writers Festival - Book Exhibit, CC, Lobby, 9 a.m.
 VARC, CC, Room C, 9:30 a.m.
 Religious Service, Wren Chapel, 5 p.m.
 Residential Concerns, CC, Room D, 5 p.m.
 Study Skills, Bot. Theatre, 7:30 p.m.
 Project Plus Forum, ROBERT PANOFF, Millington Audit., 7:30 p.m.
 GSA - Arts & Sciences Film Series, WHAT'S UP TIGER LILY?, Andrews Audit., 8 p.m.
 Sophomore Steering Committee, Swem, G-2, 8 p.m.
 Recital - KATY GERALDS, PBK Audit., 8:15 p.m.

THURSDAY, MARCH 26

Meet The President Day, Wren Great Hall, 8 a.m.
 Writers Festival - Book Exhibit, CC, Lobby, 9 a.m.
 CSA, Wren Chapel, 1 p.m.
 Writers Festival, Lake Matoaka Shelter, 1 p.m.
 WMCF, Swem, G-1, 5 p.m.

Auditions at UVA Held for Ash Lawn

Actors, singers (light opera style), and mimes are invited to audition for parts in eighteenth-century musical presentations to be held at Ash Lawn in July and August. Performers should bring music and resumes to Cabell Hall, University of Virginia, 7:30-10:00 p.m., March 25--Rm. B-11, and March 26--Green Room.

For more information call (804) 293-9539.

Employment

GROUNDSMAN - \$7,196 to \$9,830 per year. Starting salary dependent upon experience and previous salary level of appointee. (#427). Experience in grounds keeping or related work. Building and Grounds department, deadline 2/25.

LABORATORY INSTRUMENT MAKER - salary range \$14,670 to \$20,040 per year. Starting salary dependent upon experience and previous salary level of appointee (#119). High school graduate with experience in constructing, repairing and maintaining precision machinery, electrical devices and metal work. Applicable work experience may substitute for high school education on an equal time basis. Incumbent will have responsibility for preventive maintenance, repair, and fabrication of all types of audio-visual and 3/4" video equipment, including editing units and color cameras. Some design of electronic and video systems required. Educational media services, deadline 5/1.

MARINE SCIENTIST A - \$13,420 to \$18,340 per year. * This is a

Canterbury, Wren Chapel, 5:30 p.m.
 Fine Arts Society, Andrews 201, 7 p.m.
 Covenant Players Reh., Andrews Foyer, 7 p.m.
 Covenant Players Reh., Andrews Foyer, 7 p.m.
 Parachute Club, CC, Room C, 7:30 p.m.
 "Go" Club, Jones 206, 7:30 p.m.
 Career Planning, NANCY GOFUS - "THE DUAL ROLE - CAREER & MARRIAGE," PBK, 7:30 p.m.

FRIDAY, MARCH 27

Prayer Breakfast, CC, Room D, 7 a.m.
 WMCF, Millington Audit., 6 p.m.
 SA Movies, W&M Hall, 7 p.m.
 Covenant Players Reh., Andrews Foyer, 7 p.m.
 Mermettes Performance, Adair Pool, 8:15 p.m.

SATURDAY, MARCH 28

Career Exploration Day, "Coffee," Dodge Room, 8 a.m.
 Career Exploration Day, PBK Audit., 8:30 a.m.

Women's Fencing, Adair Gym, 8 a.m.
 Career Exploration Day, Morton 9 a.m.
 Ecclesia, Wren Chapel, 9 a.m.
 College Women's Club Swimming Lessons, Adair Pool, 10 a.m.
 Organ Recital, Wren Chapel, 11 a.m.
 Men's Rugby Game, JBT 43, 1 p.m.
 Law Review - Softball Game, Large Intra Field, 1 p.m.
 Jr. Shakespeare Guild, Swem, G-1, 2 p.m.
 Ecclesia, Wren Chapel, 7 p.m.

SUNDAY, MARCH 29

Women's Fencing, Adair Gym, 8 a.m.
 Women's Rugby Game, Large Intra Field, 9 a.m.
 CSA Mass, CC, Ballroom, 11 a.m.
 American Classics Concert, CC, Ballroom, 1:30 p.m.
 BSU, Wren Chapel, 4 p.m.
 Panhel Reh., CC, Ballroom, 5 p.m.
 Cinema Classics Society - SULLIVAN'S TRAVELS, Millington Audit., 7:30 p.m.
 Talent Show - Botetourt Area, CC, Little Theatre, 7:30 p.m.

MONDAY, MARCH 30

Animation Art Sale, CC, Lobby, 10 a.m.
 CSO, CC, Gold Room, 5 p.m.
 Panhel Fashion Show, CC, Ballroom, 5 p.m.
 Italian Film - DESERTO ROSSO, Bot. Theatre, 7 p.m.
 Covenant Players, Andrews, 7 p.m.
 Photography Club, CC, Room D, 7 p.m.
 Va. Pirg., Swem, 7:30 p.m.

TUESDAY, MARCH 31

Animation Art Sale, CC, Lobby, 10 a.m.
 BSA, CC, Room C, 3:30 p.m.
 Sophomore Class Wine & Cheese, Courtyard, 4 p.m.
 SAC, CC, Little Theatre, 4:30 p.m.
 WMCF, Swem, 5 p.m.
 Ebony Expressions Reh., CC, Little Theatre, 6:30 p.m.
 Covenant Players, Andrews Foyer, 7 p.m.
 Fine Arts Society, Andrews 201, 7:30 p.m.
 VARC, Morton, 7:30 p.m.
 CSA, Wren Chapel, 7:30 p.m.
 Collegiate Civitans, CC, Room D, 7:30 p.m.

Classified

FOR SALE

THREE-SPEED WOMEN'S BIKE. Excellent running condition; less than one year old; new tires; large iron basket and two lock included. Only \$60. Please call 229-1268.

HAMMER DULCIMER and carrying case. Exc. cond. \$250. 220-0315.

'65 VW VAN - oil cooler, header, self-rebuilt engine. \$650. Call J.D. - 229-1787. 4/7

1974 PLYMOUTH FURY. Two door, power steering, power brakes, air conditioning, AM-FM stereo; 53,000 miles, no rust, very good condition. \$600. Call Andrew Smith at 253-4534.

1978 CHEVETTE, 4 dr., 4 spd, AM-FM, new tires. Exc. MPG. Exc. cond. Mike - 253-4618. 3/31.

DINETTE SET with 4 chairs, formica top table. \$125. Octagon solid oak coffee table. \$250. 229-8622. 3/31

FOR RENT

Need a place this summer? Law student seeks upperclass or grad student (female) to share 2 bdrm. apt. in Woodshire Apts., Merrimac Trail. Air-conditioned, community pool, separate bath, furnished. Available May 10-August 25. Rent is a mere \$140 mo. plus electric. Call Loretta or Pat at 229-5474 after 2 p.m.

PARTIALLY FURN. BEDROOM; private bath, equipped kitchen, laundry fac., cable TV. Immed. occupancy. Call Kelly Purcell, 229-5817.

Roomy 2 bedroom apt. to sublet May-Aug. 2 1/2 mi. from campus. A/C and pool. Rents for \$270 per mo. plus utilities - Call Susan or Laurie at 229-1213. 3/31

July or August or Sept. thru Dec. 1981. Attractive architecturally designed energy efficient house in Windsor Forest with swimming pool and tennis courts. Fully furnished 3 bedrooms, 2 1/2 baths, fireplace, country kitchen, small study. \$450/month. Call 565-0613. 3/31

Furnished house, two bedrooms, study, dining room, living room with fireplace, laundry facilities, 3 miles from campus in Indigo Park. Available May 15 or Aug. 20 1981 thru May 31, 1982. \$300 per month plus utilities. Call 220-2260. 3/31

Furnished contemp. 2-story house, 3 BR, 2 1/2 bath, study, DR, LR w/fpl., screened porch, deck, 2 heat pumps. Community priv. incl. (tennis, beach, playground, etc.) 7 miles from campus on lake in First Colony. Available August (ev. sooner) with 1 year lease. \$500-plus utilities. 229-1429. 3/17

WANTED

Female roommates wanted to share apartment May-Aug. and/or '81-'82 school year. Call Anne, 229-7793.

Female to share large bedroom in big apt. approx 3 miles from campus. \$82.50 mo. and utilities. Call 229-8658.

Visiting faculty member and wife seeking house for rent - academic year 81-82. Call ext. 4304. 3/10

Responsible W&M couple to be married in June desire house to sit for summer and/or next school year. Will maintain house, yard, and sit pets. Call Curt Angstadt at 253-4308. 3/17

Student - family seeks female student to care for 2 children during night (11 p.m. to 7

a.m.) for working mother in exchange for free room with kitchen privileges. Must be non-smoker. From end of May thru end of Aug. Call 253-0412. 3/17

Summer apartment from May 25th - August. Contact Dana Flanders Box 137, (703) 885-8569, Mary Baldwin College, Stanton, Va. 24401. 3/31

Would like to rent small house or apartment near Campus - Call B. Watkinson - 220-2756. 3/31

FOUND

Ladies ring found in Adair week of 3/23 - Call to identify. 3/31

Would person who called Adair last week to claim ladies ring, please call back. 4/7

Found ladies watch around 2 p.m. 3/5 in front of James Blair Hall. 3/31

ONE PAIR LADIES GLOVES in wig 3/19. Call Mrs. Pearson to identify. ext. 4245. 4/7

Photo Deadline Set for CC Show

Wednesday, March 25 at 5 p.m., is the deadline for photographs to be submitted for the campus-wide photo contest being sponsored by the Campus Center.

Students, staff and faculty are invited to submit entries for the show which will be on display in the Campus Center lobby March 30 through April 10.

The grand prize is a \$50 gift certificate at Massey's Camera Shop. Honorable mention will be given in each category.

Inquiries concerning entries should be made with Mike Bradshaw, director of the Campus Center at ext. 4235.

Published weekly by the Office of University Communications during the academic year, except when the College is in recess, and twice each month in June, July and August.

Barbara Ball, editor
Publications Office, production