

Vice Rector Receives Award

A woman who has devoted much of her life to service and leadership as a volunteer in a variety of fields has been selected as the 22nd recipient of the Thomas Jefferson Award for Public Service by the Old Dominion Chapter, Public Relations Society of America.

Miss Anne Dobie Peebles, Vice Rector of the College, will receive the annual award at the chapter's Thomas Jefferson Dinner on Thursday, Dec. 1 at the Williamsburg Lodge and Conference Center, according to the announcement by John E. Gullett, chapter president.

Gullett said the 100-member statewide organization selected Miss Peebles from among a number of nominees particularly because of her extensive involvement and leadership as a volunteer in educational, health and religious activities in Virginia.

Among those scheduled to pay tribute to her career during the dinner are former Governor Albert S. Harrison, Jr., former United States Senator Harry F. Byrd, Jr. and Carter O. Lowance, longtime chief aide and confidant to Virginia governors and former executive of the College of William and Mary and the Medical College of Virginia.

The chapter will also recognize Lea Booth, the retired president of the Virginia Foundation for Independent Colleges, by designating him the fifth recipient of the Thomas Jefferson Award for Public Relations. This award will also be presented at the Williamsburg dinner.

Miss Peebles, a native and resident of Carson, Sussex County, is an alumna of the College of William and Mary.

She is a past President of the State Board of Education and a past Chairman of the board of John Tyler Community College. She is a co-founder of the State Education Assistance Authority and a member of the Board of Higher Education of the United Methodist Church.

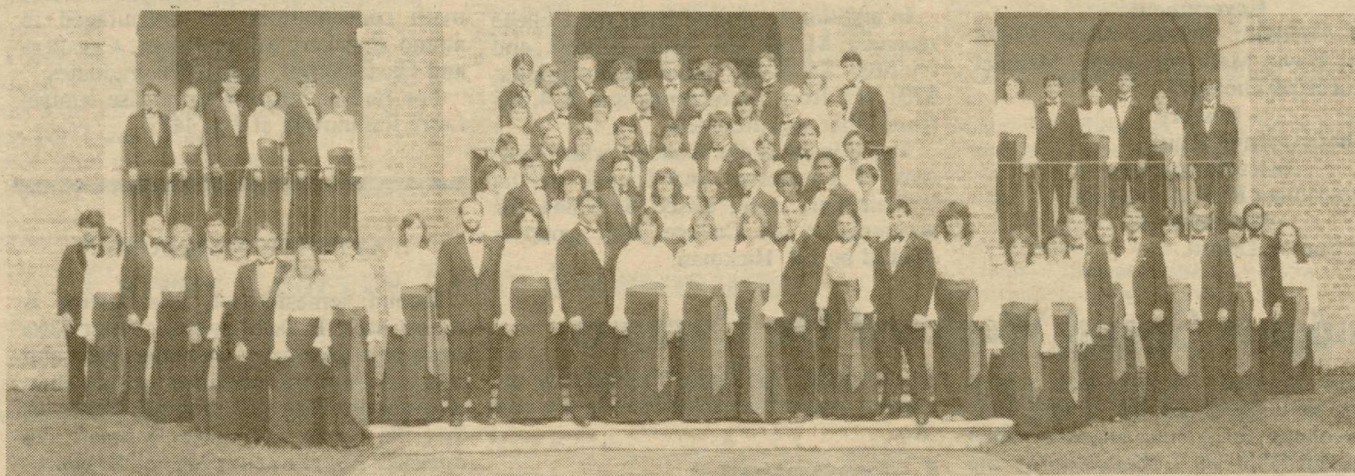
She is a past President of the Virginia Federation of Women's Clubs, has served as State Crusade Chairman and Trustee of the American Cancer Society, is a Trustee of the Medical College of Virginia Foundation and the Patrick Henry Hospital for the Chronically Ill, a member of the Executive Committees of the Virginia Woman's Forum and the Virginia Council on Health and Medical Care, and is on the boards of the Salvation Army and Y. M. C. A. Model General Assembly.

Listed in Who's Who, Miss Peebles has been recognized on other occasions. The College of William and Mary's Society of the Alumni conferred its Alumni Medallion for her leadership and loyalty to the College, she has the Distinguished Service Medallion from the Medical College of

Virginia, and is an honorary member of Delta Kappa Gamma, the educational recognition society.

Active in Sussex County affairs as well, she is organist for her church, a Sunday School teacher and lay leader. She was also the county's Bicentennial Committee Chairman.

Miss Peebles has also been active as a volunteer and leader in a number of political campaigns, including those of Governors Harrison, Mills E. Godwin, Jr., John N. Dalton and Robb; Senator Byrd; and State Sen. Elmon T. Gray, whom she serves as unpaid legislative aide.



Choir/Chorus Holiday Concerts Dec. 1-4

The William and Mary Choir and Chorus will present a mix of contemporary and traditional holiday music for a series of four concerts, Thursday through Sunday, Dec. 1-4.

Performances are scheduled at 8:15 p.m., Dec. 1, 2, and 3, and at 3 p.m., Dec. 4, in Phi Beta Kappa Memorial Hall. This is the first time that the schedule has included a matinee.

General admission is \$2. Tickets will be on sale at the door for each performance.

Tickets are also available at the music department office in Ewell Hall.

The chorus will be featured in a presentation of "Seven Joys of Christmas," a collection of traditional carols by contemporary American composer Kirke Mechem. Soloists will include Sherry Bushong, who will sing "The Joy of Love: This is the Truth;" and pianist Kimberly Barlow, who will play "The Joy of Song: God Bless The Master of This House."

The choir will present Cantata No. 191, "Gloria In Excelsis Deo," by J.S. Bach. Soloists will be Joy Dibble and Kendall Kerby.

The choir and the chorus will sing a medley of English carols. Music for these

William and Mary NEWS

Tuesday, November 22, 1983
Volume XII, Number 13

Permit No. 26
Non-Profit Organization
U.S. Postage PAID at Williamsburg, Va.

carols, including several which probably will be new to local audiences, was researched by choir director Frank T. Lendrim, while on a semester research leave in London last year. Lendrim is professor and chairman of the music department.

The Botetourt Chamber Singers, a group of 16 choir members, will sing three carols by Alfred Burt and will also perform a medley of carols. The Singers maintain a busy schedule of appearances in the area and will sing at the Christmas Concert at Ash Lawn Sunday, Dec. 11.

The concert will open with a brass ensemble playing "A Suite of Carols," arranged by Sammy Nestico, and "The Twelve Days of Christmas," arranged by Andrew Kazdin.

The Men of the Choir will sing a Spanish carol, "La Virgen lava Panales," with Mary Ann Boyd, a sophomore from Arlington, Va., as soloist; and "Nowell" by Randall Thompson with soloists James Moran, Dirk Brown, Edwin Holt, and Terrence Bockhorn.

The singers will continue the tradition of asking the audience to join them in a final round of carols at the close of the concert.

Members of the Brass Ensemble will include David Brown, Amy Heth and Ted Zoller, trumpet; Scott Murphy, French horn; James Borys, Paul Credon and Philip Sunatz, trombone; and Andrew Kahl, tuba.

Soloists with the choir will include Courtney Reid, William Joyner, Laura Ingram, Elizabeth Clancy, Tamera Harwood, Robert Seal, Dennis Ramsey, Elizabeth Fulcher, Angela Castle and Debra Young and instrumentalists Lisa Porter, oboe and Bradley Staubs, cello.

Instrumentalists who will accompany the choir for the Bach Cantata will include Deborah Zanfagna and Laura Jones, flute; Lisa Porter and Valeska Tiefel, oboe;

Norm Norris, Amy Heth and David Brown, trumpet; Chris Boyle, timpani; Laurie Ramsey, Raelene Canuel, Kathy Woodall, Rayne Turner and Lisa Harper, violin; Margaret Bamberg and Sarah Wilson, viola, Bradley Staubs and David Vogan, cello.

Composer Blank To Speak Here

Composer Allan Blank will give a talk on his work, play recordings of his work and answer questions about his work in particular and music composition in general at 7 p.m., Monday, Dec. 5 in Ewell 100.

Blank was born in New York in 1925. His early musical training was on the violin. He attended the High School of Music and Art where an interest in conducting and composition was fostered. He studied at the Juilliard School of Music, 1945-47, Washington Square College (B.A. 1948) and University of Minnesota (MA, 1950). He also attended the University of Iowa.

Blank was a violinist with the Pittsburgh Symphony, 1950-52 and has taught at a number of schools and universities. He is currently an associate professor in the

Continued on p. 2.

Art Show Reception

A reception will be held from 5-7 p.m., Thursday, Dec. 1 in Andrews Foyer in celebration of the Fine Arts Faculty Show which opened Nov. 21 in Andrews Foyer. The show will continue until Dec. 21.

Members of the College community are cordially invited to the reception and are asked to RSVP by calling ext. 4003.

Gifts Top \$5 Million Mark

Paced by more than a million dollar increase in gifts from alumni, private giving to the College of William and Mary in fiscal 1982-83 topped the five million dollar mark for the first time in the College's history.

The College received a record high in paid gifts of \$5,060,269 in 1982-83, an increase of approximately \$100,000 over 1981-82 when William and Mary received \$4,947,090, the previous record total.

This year's total is almost double the amount received from private sources only two years ago, and almost five times that of 10 years ago after the establishment of a development program by the

Board of Visitors on the recommendation of President Thomas A. Graves, Jr.

Alumni gave the College \$2,636,863 in 1982-83, an increase of a million dollars over the 1981-82 total of \$1,568,007. This includes \$613,530 in paid gifts to the William and Mary Fund, which was chaired by Mr. and Mrs. Aubrey Mason of Lynchburg. Mr. Mason served as a member of the Board of Visitors which provided a Challenge Grant to alumni for the William and Mary Fund.

The Athletic Education Foundation received \$615,944 during the past fiscal year. Over the past four years, the AEF has raised more than two million dollars for the intercollegiate athletic program at the College.

Duane A. Dittman, vice president for university advancement, noted that 52 percent of all gifts to the College during the past fiscal year came from alumni, compared with a national average of 26 percent. Alumni support for current operating expenses, including faculty sal-

Continued on p. 2.

Holiday Schedule

Because of holiday printing schedules, there will not be an issue of the William and Mary News on Tuesday, Nov. 29. There will be two issues in December before the holiday break, Dec. 6 and 13.

Orchestra Concert Dec. 7

The William and Mary College-Community Orchestra under the direction of Joel Suben will present works of Mozart and Tchaikovsky for a winter concert to be presented at 8:15 p.m., Wednesday, Dec. 7, in Phi Beta Kappa Memorial Hall.

General admission is \$1.50. Tickets will be on sale at the door the evening of performance and are also available in advance

at the music department office in Ewell Hall.

Suben, a lecturer in music, is currently in Poland as a guest conductor but will return for the Dec. 7 concert.

The orchestra will play Symphony No. 40, K. 550 (1788) by Mozart and Nutcracker Suite, Op. Fla (1892) by Tchaikovsky.

PBK Taps Students, Faculty Member

Biology

Paul Reid Cabe, Lisa Anne Jackson, James David Matthews/music.

Chemistry

Thomas Paul Jarvie, Melissa Jeanne Moore/biology, Allen John Taylor.

Economics

Edward Michael Foster, Robert Frederick Garnett, Jr., Hilarie Margaret Hicks/music, Sheila Eileen Mertes, David Michael Safon, Nickolas J. Sojka, Jr./government.; Maria Apostolos Stamoulas/French.

English

Deborah Ann Ottinger, Heidi Marie Ingram.

German

Julia Marie Horman/computer science

Government

John William Bickel, John Floyd Fithian, David Mark McCauley, Michael Lee Sturm/psychology.

History

Kimberly Jeanne Smith

Interdisciplinary

Volko Fabian Ruhnke/history

Mathematics

Amy Sue McDiffett.

Philosophy

Sylvia Karen Bamberger/government, Alaine Young Miller, Frederick Joseph Rauscher, Jr./government, Thomas James Stallings.

Physics

James Randolph Heflin, Jr.

Psychology

Laurie Ann Tubbs

Religion

David R. Carlson

Faculty Initiate

Alan Edward Fuchs/Philosophy

Gifts To College

Continued from p. 1.

Our supplements, exceeded \$1,000,000, Dittman said.

The College also received more than \$1.1 million for endowments and \$780,348 for facilities, primarily for the Muscarelle Museum of Art which opened this fall.

In addition to alumni gifts, the College received \$1,148,463 from parents and friends; \$538,405 from corporations; \$701,713 from foundations and \$34,825 from other organizations.

The Friends of the College, which consists of businesses and friends in the Williamsburg area, raised \$119,844 for programs at the College. The group is chaired by J.B. Hickman.

Students Spend Weekend On Campus

About 40 black Virginia high school seniors were guests of the College this past weekend for a free program called "Weekend With Us," sponsored by the Office of Admissions in conjunction with the Black Student Organization (BSO).

The high schoolers spent the weekend in campus residence halls with student hosts and took part in activities designed to give them a preview of college life.

After registration Friday, participants attended an introductory session called "Why Should a Student Attend William and Mary?"

Participants had dinner in the Commons and attended a speech by Georgia State Senator Julian Bond in the Campus Center Ballroom. Bond's appearance was sponsored by the BSO as part of its Black Cultural Lecture Series.

Saturday's activities for the visiting students included a campus tour in the morning, the football game with Richmond at 1:30 p.m., and block shows by traditionally black sororities and fraternities in the evening.

The group attended Sunday morning services at First Baptist Church on Scotland Street. William and Mary's black

choral group, the Ebony Expressions, presented musical selections during the service.

Composer

Continued from P. 1

department of music at Virginia Commonwealth University.

He has over 50 published works and a number of records. His most recent award was first prize this year in the George Eastman Competition, sponsored by the Eastman School of Music, Rochester, N.Y., for his "DUO" for bassoon and piano.

This fall he received a National Endowment for the Arts Composers Fellowship grant of \$8,400 in support of his opera "The Magic Bonbons."

The libretto was written by the composer and is based on a story by L. Frank Baum. This is Blank's third opera. His first, "Aria da Capo," based on a play by Edna St. Vincent Millay, was among the finalists in the 1979 New York City Opera competition. His second, "Excitement at the Circus," a work for children, was presented last June in Dogwood Dell in Richmond.

Christmas Craft Show

The Campus Center Craft Show will be held Dec. 3 from 10 a.m. to 4 p.m. Those interested in exhibiting should return the application below no later than Monday, Nov. 28.

Because of space limitations, exhibit spaces will be assigned on the basis of the date on which it was received. There is a \$15 charge per space, payable at the time of application. Each space is approximately eight feet wide and eight feet deep and will include a table two and a half by six feet.

Craftsmen are invited to demonstrate their craft during the show if it is feasible for the medium in which they work.

For questions concerning the show, please call either Bob Knowlton at ext. 4235 or Barbara Berninghausen at ext. 4041.

Name _____

Phone No. _____

Address _____

Type of craft _____

No. of spaces requested _____

If electricity needed, please specify for what _____

Do you wish to demonstrate your craft _____

PLEASE SUPPLY YOUR OWN EXTENSION CORDS.

Please return form to:
Bob Knowlton, director
Campus Center

Make checks payable to Campus Center

Placement Interviews

1984 Interviews
(all resumes due Dec. 9)

- Morgan Guaranty - Systems Group (C. S., App. Sci., Math, M.S. Math), 1/23
- First American Bank of Virginia (Econ., English, Psych., Soc., Acct., BBA), 1/24 & 25
- National Security Agency (C. S., Foreign Lang: Russian, Chinese, Arabic, M.S., Math), 1/24 & 25
- Stouffers Food Corporation (Econ., B.B.A.), 1/25
- United Virginia Bank (BBA, Econ.), 1/26
- Computer Sciences Corporation (C.S., App. Sci., Math, M.S., Math, M.B.A.), 1/27
- Westvaco Corporation (All undergrad., M.B.A.), 1/30
- Marine Midland Bank (All undergrad., 1/31.
- United Way of America (All undergrad., all grad.), 1/31
- American Management Systems (C.S., App. Sci.), 2/1
- AT&T Information Systems (All undergrad., M.B.A.), 2/1 & 2
- Ferguson Enterprises (All undergrad., all grad.), 2/3
- American Security Bank (BBA, M.B.A.), 2/6
- Strawbridge and Clothier (All undergrad.), 2/7
- Miller and Rhoads (BBA), 2/8
- HBO, Inc. (All undergrad., especially BBA), 2/8
- Southern States (All undergrad., especially BBA), M.B.A. (rural background is necessary), 2/9
- Air Products and Chemicals (M.B.A.), 2/9
- R. R. Donnelley & Sons (C. S., App. Sci., Econ., Physics, M.S., Physics, Psych., M.S., Psych, Acct., BBA, M.B.A.), 2/10
- First National Bank of Maryland (M.B.A., B.B.A., CS, Math, Lib Arts w/Bus. Courses (some acctg. is necessary), 2/10

The Office of Placement has received information regarding procedures to be used in applying for Summer 1984 positions with the National Park Service. The deadline for applying for these positions is Jan. 15.

Interested individuals are encouraged to review the information which is included in the Summer Jobs Notebook in the Career Library, Morton 140.

Careers in Actuarial Science

Representatives from the Wyatt Company and Acacia Mutual Life Insurance Company will discuss career opportunities in actuarial science with interested students at 7 p.m., Monday, Nov. 28 in Jones 302.

Math concentrators and prospective math concentrators are encouraged to attend. Speakers will be Robert Cavaliere and David Sreett, both 1976 graduates.

For further information please contact Larry Rabinowitz at ext. 4481.

!! ATTENTION SENIORS !!

Second semester job interviewing is almost here! In fact, employer interviews begin only *one week* after winter break and many of those are requiring pre-selection of resumes. With this in mind, *Please Be Sure To Check Our Latest Schedule For Employer Visits and Due Dates Of Resumes - Many Of Which Are Due Before Break - Dec. 9.*

Also, please remember, *You Must Be Registered With The Placement Office Before You Can Sign Up For Interviews.*

Hill Scholarships Established In Math

The Fred Hill Mathematics Education Teaching Scholarship has been established at the College by an area resident who says he appreciates the value of good early training in mathematics and wishes to respond to the current need for good teachers in the field of mathematics.

Mr. Hill's contribution of \$1,000 has been matched by his employer, Anheuser-Busch, and will accommodate two \$1,000 awards per year.

Deadline is Dec. 9 for applications. The first two awards will be made for the second semester this year.

Candidates must be undergraduates seeking certification to teach mathematics and who have an overall 3.0 grade point average. Financial need will also be given consideration.

Candidates should possess "those personal qualities desirable of a teacher" and will be expected to teach mathematics upon completing college and/or graduate school or repay the funds received.

The School of Education's Financial Aid Committee will award the scholarships based upon the above considerations in consultation with Stuart Flanagan (ext. 4334) mathematics education program director.

Applications are available in the Teacher Placement Office in Jones Hall and applicants are invited to contact Mr. Flanagan for details concerning the scholarship awards.

Math Scholarship

The Virginia Council of Teachers of Mathematics is offering a \$300 scholarship to full-time students with junior standing, a major in mathematics or mathematics education, who plan to teach mathematics in a Virginia school.

Deadline for applications is Feb. 1.

Application forms are available in the Teacher Placement Office, Jones 305. For further information contact Stuart Flanagan at ext. 4334, 4467.

Dr. Kapp Dies

Dr. Mary Eugenia Kapp, professor emerita of chemistry at Virginia Commonwealth University, died Saturday, Nov. 20 at Stuart Circle Hospital in Richmond.

A graduate of the University of North Carolina and Duke University, she joined the faculty of Richmond Professional Institute of the College (now VCU) as assistant professor of chemistry and head of the chemistry department. During World War II she worked as assistant chief chemist for DuPont in Richmond.

Returning to RPI in 1946, she was promoted to associate professor. In 1952, she was appointed professor and made chairman of the School of Applied Sciences, in which she continued as chemistry department chairman until her retirement in 1973.

A graveside service was scheduled today at Oakdale Cemetery in Mount Airy.

Notebook

President's Hours

President Graves will hold "Open House" hours for students throughout the year continuing a tradition of providing opportunities for students to chat informally with him about any topic of their choosing.

The President has set aside hours to meet with students, over and above his daily calendar, and students are invited to stop by his office in Ewell Hall during these hours. No appointment is necessary. Callers will generally be given about 10 minutes.

The next Open House date is: —
Wednesday, Nov. 30 | 4-5 p.m.

Availability of 1983 Faculty/ Staff Telephone Directories

Initial distribution of these directories has been completed, and there are a few remaining. These are available on a "first-come, first-served" basis, and they may be picked up at the Business Affairs Office in the Bridges House.

Alpha Lambda Delta Offers Scholarships

For the 1983-84 academic year the National Council of Alpha Lambda Delta will award 13 - \$3,000 scholarships.

Any member of Alpha Lambda Delta who was graduated with a cumulative average of Alpha Lambda Delta initiation standard is eligible. Graduating seniors may apply if they have achieved this average to the end of the first semester (or first quarter) of this year.

Applicants will be judged on scholastic record, recommendations, the soundness of their stated project and purpose, and need.

Application blanks and information may be obtained from Dean Jarmon, James Blair 210.

The application form must be completed by the applicant and received at the National Headquarters of Alpha Lambda Delta by Jan. 4.

Hospital To Light Holiday Tree

The Williamsburg Community Hospital Auxiliary will be placing a very special tree in front of the hospital again this year.

For each \$5 donation, a light will be placed on the tree. Lights may be purchased either as a special gift for a friend or relative, a babysitter, schoolteacher, someone of whom you are most proud, someone to whom you are grateful, or in memory of a departed relative or friend. A log book will be kept in the hospital lobby listing the names of the individuals represented by the lights on the tree and will be available for public viewing.

The tree will be lighted on Saturday, Dec. 3, to coincide with the first day of the Annual Christmas Homes Tour, and will remain lighted throughout the holiday season.

If you would like to say "I'm thinking of you" in a very special way this holiday season, participate in the FESTIVAL OF LIGHTS by sending a check payable to the Hospital Auxiliary to "Festival of Lights," 1238 Mt. Vernon Avenue, Williamsburg, Va. 23185.

Please list the name or names of persons for whom the lights are intended, whether "IN HONOR OF" or "IN MEMORY OF" and include the name and address of the person or family to whom the acknowledgement is to be sent.

A \$5 donation will purchase a light on the tree.

A \$50 donation will purchase a light on the star at the top of the tree.

Plant Give-Away

Buildings and Grounds crews are now planting bulbs and pansies in flowerbeds around campus where chrysanthemums have been dug out.

Plants of each variety have been planted in stock beds for cuttings next spring. The fall crops and some others have been sent to Ash Lawn, says Roy Williams, landscape architect.

The remaining plants, about 1800, will be distributed to members of the College community on a first come basis from 1-3 p.m., Tuesday, Nov. 29.

Those interested in obtaining some of plants are requested to bring their own containers.

These plants, says Williams, should be planted outside, mulched and watered. They will, he promises, produce flowers next fall if well tended.

For more information on the plant distribution, call Roy Williams at ext. 4382.

Career Library Lists Internships

(For further information on program listed below, students are directed to specific notebooks in the Career Library, Morton 140.)

Carnegie Endowment For International Peace

The Student Intern Program at the Carnegie Endowment is designed to provide work experience for students who have a career interest in the area of international affairs.

Interns assist in reviewing and editing manuscripts for the *Foreign Policy* magazine and assist with publications of the Arms Control Association. Applicants must be graduating senior or individuals who have received their Bachelor's degree within the last year, and must have a background in the area of international politics or economics. All interns are hired for a period of six months. Application deadline is Jan. 18.

(See *Internship Book VI.*)

Lawrence Livermore National Laboratory

Each year the University of California's Lawrence Livermore National Laboratory offers summer research appointments to undergraduate students who have completed at least two years in their field, to graduate students and to faculty members across the country. Students with majors in chemistry, computer science, geology, mathematics and physics are encouraged to apply.

Application deadline is Dec. 1
(See *Internship Book IV, Science section.*)

Summer in France

There will be an information meeting for all students interested in either a junior year or a summer in Montpellier, France with the William and Mary program on Tuesday, Nov. 29 at 7:30 p.m. in the Campus Center, Rooms A & B. Anyone interested is encouraged to attend! Please contact the Office of International Studies at x4354 for more information.

The Boston Globe

The Boston Globe Summer Intern Program is for college students interested in a journalism career. Applicants must have experience at least with a student publication, have a driver's license, and be able to type at least 30 words per minute. Students who will have graduated by the summer are not eligible. Application deadline is Dec. 1.

(See *Internship Notebook II, Journalism section.*)

Calendar

WEDNESDAY, NOVEMBER 23

Faculty luncheon group, CC, Room D, noon

THURSDAY, NOVEMBER 24

HAPPY THANKSGIVING (no events scheduled)

FRIDAY, NOVEMBER 25

Basketball, W&M vs North Carolina Wesleyan, W&M Hall, 7:30 p.m.

SATURDAY, NOVEMBER 26

Organ Recital, Wren Chapel, 11 a.m.

SUNDAY, NOVEMBER 27

Cinema Classics Society, Millington Aud., 8 p.m.

MONDAY, NOVEMBER 28

Pub Council, Campus Center, 3:30 p.m.

NTSA, Wren Kitchen, 5 p.m.

Phi Mu Alpha, Campus Center, Rooms A&B, 6:30 p.m.

English 465 (films), Botetourt Theatre, 8 p.m.

Sigma Alpha Epsilon, CC, Room D, 8 p.m.

CC LOBBY Sophomore Steering Committee chocolate sale, 5-7 p.m.

TUESDAY, NOVEMBER 29

BSA, CC, Room C, 3:30 p.m.

Kaffeeklatsch, German House, 3:30 p.m.

SAC, CC, Little Theatre, 4 p.m.

NTSA, Wren Kitchen, 5-6 p.m.

Alpha Phi Omega, CC, Rooms A&B, 5:30 p.m.

Help Session, Math dept., Jones 105, 6 p.m.

Science Fiction Club, CC, Room D, 6:30 p.m.

CSA, Wren Chapel, 7:15 p.m.

Econ. Review, Morton 220, 7 p.m.

International Studies, CC, Rooms A&B, 7:30 p.m.

Christian Science Organization, CC, Room D, 7:30 p.m.

Psych. exp., Millington Aud., 8 p.m.

NTSA, Wren Kitchen, 9 p.m.

SA Social, CC, Ballroom, 9-1 a.m.

CC Lobby - Sophomore Steering Committee chocolate sale, 5-7 p.m.

WEDNESDAY, NOVEMBER 30

Faculty luncheon group, CC, Room D, noon

Phi Delta Kappa, CC, Sit 'n Bull, 5:30 p.m.

Math III problem session, Small 108, 6:30 p.m.

Circle K, CC, Rooms A&B, 7 p.m.

Psych. exp., Millington 121, 7 p.m.

Psi Chi initiation, Great Hall, Wren Bldg., 7:30 p.m.

W&M Basketball vs. Duke, W&M Hall, 7:30 p.m.

Honors 201, Millington Aud., 7:30 p.m. (lecture by Thomas Heacock, English Dept.)

Senior Class, Washington 100, 7 p.m.

College Republicans, CC, Sit 'n Bull, 7:30 p.m.

Psi Chi, reception, CC, A&B, 8 p.m.

Recorder Consort, Wren 315, 9 p.m.

CC Lobby - Blackwell Jewelry, 9-5 p.m.

Sophomore Steering Committee sale

Bibliophiles Offer Three Prizes

The Williamsburg Bibliophiles, an organization of collectors and students of the art of the book, which was founded in 1980 announces its first annual book collecting competition.

The contest is open to all students currently enrolled at William and Mary. The first prize is \$75.00, the second prize \$50.00 and the third prize is \$25.00.

Each contestant will submit a formal bibliography and statement describing how and why the collection was assembled. After preliminary judging, finalists will be asked to make a portion of their collection available for final judging.

John D. Haskell, Associate Librarian at Swem Library; Linda Collins Reilly, Associate Provost; and Joyce McKnight, an alumna of the College and member of the Williamsburg Bibliophiles, are administering the details of the competition. Copies of the rules for entry are available from Mr. Haskell in Swem Library. The deadline for entering the competition is Feb. 3.

Open Auditions

The Williamsburg Players will hold open auditions for Kevin O'Morrison's "LADYHOUSE BLUES," Monday, Nov. 28, and Tuesday, Nov. 29, at the James York Playhouse, 200 Hubbard Lane.

"LADYHOUSE BLUES" is a poignant yet humorous look back at America through a mother and her four daughters as they wait for the return of the man of the family at the end of World War II in 1919 in St. Louis. There are five parts in this production, one woman in her forties, and four women, 18-28.

Directing this production will be Patricia Curtis Blatt with Barney Barnes as producer. "LADYHOUSE BLUES" will be performed throughout February. Call 229-1679 or 877-6468 for more information.

"OLD ADIRONDACKERS" — A CALL FOR HELP

Camp Huntington, residential center for the winter camping class, P.E. 202-44, recently suffered extensive losses through a tragic fire. Those who have attended will appreciate the importance of rebuilding the facility so the wonderful experiences of the winter environment may continue to be enjoyed by our students.

Please send donations to "Outdoor Activities," c/o Sylvia Shirley, Women's Physical Education.

Until the dining room is rebuilt, the winter camping class will probably be held at Sunday River, ME.

Smithsonian Environmental Research Center

The Smithsonian Environmental Research Center offers undergraduate and graduate level students a unique opportunity to gain exposure to, and experience in, environmental research. Applicants should be individuals who are in a position to commit themselves fully to the completion of a project. Application deadline is Dec. 1.

(See *Internship Book I, Environment section.*)

Internships in Alaska

The Internship Program in Alaska is a cooperative effort to increase non-profit ability to work on important issues affecting Alaska by recruiting college students, both in and out of Alaska, to spend one or more semesters as interns. The majority of internship projects are based in Anchorage. Internships must relate to the student's major or area of concentration.

Application deadline is Dec. 6.
See *Internship Book IV, Social Service section.*

ASME

The American Society of Magazine Editors' 1984 Magazine Internship Program is for editorially-oriented students, with emphasis on the tasks of editing magazines and business papers. The program is open to students who will complete their junior year by June 1984 and will be entering a full senior year that fall. Students with previous experience in journalism are encouraged to apply. Application deadline is Dec. 15.

(See *announcement in Internship Book II, Journalism section.*)

Newsday

Newsday, the nation's largest evening newspaper, announces its summer journalism program for sophomores, juniors, and seniors who have a commitment to journalism and who are interested in a newspaper career. Positions are available in reporting, editing, photography, and art. The jobs are located at Newsday's headquarters in Melville, Long Island. Application deadline is Dec. 16.

(See *announcement in Internship Book II, Journalism section.*)

Conservation Summit

The National Wildlife Federation offers internships for the planning and presentation of Conservation Summits. Applicants must be mature, reliable and energetic, with the ability to accept responsibilities,

Continued on p. 4.

Employment

The following positions are open to all qualified individuals; however, current faculty and classified employees will receive first consideration. Except where noted, inquiries and applications should be made at the Personnel Office, 201 James Blair Hall, and not at the department where the opening exists. Call 229-JOBS (229-5627) for an updated listing and 24-hour service. An EEO/AA employer.

COMPUTER SYSTEMS ENGINEER (Grade 13)--Salary range \$21,732 to \$29,690 per year. Starting salary dependent upon experience or exceptional qualifications and previous salary level of appointee. No. 504.

Responsibilities include planning, installation, and routine maintenance of network and network-associated devices and the interfacing of terminals and microcomputers with the IBM and PRIME computers.

Qualifications--Bachelor's degree or equivalent demonstrated ability in computer systems preferred. Ability to assume primary responsibility for management and installation maintenance of IBM-PRIME telecommunications network, which incorporates a Gandolf PACK IV switch/controller and some 200 terminals, lines and modems required. Familiarity with computing equipment, telecommunications circuitry, and telecommunications diagnostic techniques desired.

Computer Center, deadline, Nov. 23.

MARINE SCIENTIST A (Grade 9)--Salary range \$15,213 to \$29,791 per year. Starting salary dependent upon experience or exceptional qualifications and previous salary level of appointee. NO. 24.

Incumbent is responsible for reviewing literature related to bivalve culture; setting up and running both laboratory and field experiments; planning and directing sampling techniques; maintaining live specimens of marine invertebrates; compiling and analyzing experimental data; and writing up the results of the experiments in the form of reports and scientific papers.

Qualifications--Master's degree in biology or related field preferred. Demonstrated ability in limnology and/or oceanography preferred. Knowledge of laboratory equipment and procedures required.

VIMS (Wachapreague Laboratory), deadline, Nov. 28.

RESEARCH ADMINISTRATIVE OFFICER B (Grade 10)--Salary range \$16,631 to \$22,718 per year. Starting salary dependent upon experience or exceptional qualifications and previous salary level of appointee.

Incumbent supervises the daily operation of the Sponsored Research section with responsibilities which include financial and contractual management of approximately 50 research projects totalling \$3 million annually; and identification and pursuit of external grants and contracts supportive of the institute's research plan.

Qualifications--Bachelor's degree in business administration or related field preferred. Excellent communication skills required. Ability to manage effectively required. Demonstrated ability in grants and contract projects management preferred. Familiarity with federal government regulations and directives regarding grants and contracts required.

VIMS (Sponsored Research Administration), deadline, Nov. 28.

SA Notes

Shopping Jaunt

On December 3, the Student Association is sponsoring shuttle buses to and from the Pottery and the Outlet Mall - a perfect opportunity for students to complete their Christmas shopping. Tickets for the shuttle are \$1, and this includes a round trip from PBK to the Pottery, to the Outlet Mall, and then back to PBK. The buses will be running at various times from 10 a.m. to 7 p.m. Riders will pay when they board at PBK.

Buffet Concert Shuttle

Jimmy Buffet will be in concert on Dec. 2 at Scope in Norfolk. The Student Association is providing transportation to and from the concert for the price of \$3. Tickets for the concert can be purchased at the door or at the Band Box, and the prices are \$11.50 and \$12.50.

Tickets for transportation may be purchased at the SA office from 1-5 p.m. on weekdays. Transportation leaves PBK Hall at 6 p.m.

End of Classes Mixer

On Thursday, Dec. 9, the End of Classes Mixer will be held in William and Mary Hall from 9 p.m. - 1 a.m. Price at the door is \$3.

Music will be provided by "The States."

Craft Workshops

This Saturday, Nov. 19 at 10 a.m., the Craft Shop continues its series with a workshop, "Improve Your Photo Technique".

The Craft Shop is located in the basement of the Campus Center near the SA office.

A \$1 donation is requested for this

workshop. After the Thanksgiving break, on Nov. 29 at 7 p.m., the Craft Shop sponsors its final workshop on making Christmas cards.

Thanksgiving Shuttle Buses

The Student Association will sponsor a series of shuttle buses to and from Norfolk Airport. The buses will leave the PBK field on Wednesday, Nov. 23 at 8:30 a.m. and 1:30 p.m.

The return buses will be leaving Norfolk on Sunday, Nov. 27 at 4:30 p.m. and 9:30 p.m.

Sign up is in the SA office. The cost is \$5 each way.

Checks are to be made payable to the Student Association.

SA Band Night

Band Night will be held Nov. 29 in the Campus Center Ballroom with "Liquid Pleasure" playing from 9 p.m. to 1 a.m.

Tickets will be sold at the door for \$3 with a W&M ID.

Admissions Intern

The Office of Admissions is offering an internship for a second semester senior in the spring term 1984. There is a time commitment of at least ten hours per week. The student would be involved with all phases of admissions work beginning with clerical filing of official documents, research projects, arrangements for local events (workshops, counselor tours, open house, etc.), group presentations to visiting families, evaluation of credentials and selection of incoming freshman class.

Interested persons should contact Dean Gary Ripple in the Admissions Office at their earliest opportunity.

Classifieds

FOR SALE

Floating duck blind, 16 x 8; galvanized boat trailer, \$750 each; walnut executive ofc. desk w/typewriter extension, sacrifice for \$250. Call 229-7030 evenings and weekends.

1980 Datsun 210, 5 speed, 20,000 miles, 229-0005, or ext. 4565. White w/tan interior, FM radio, excel. cond., \$3800.

TDK & Maxell blank tapes at the lowest prices in Williamsburg. All are factory fresh with full manufacturer's lifetime warranty. Don't pay too much! Call Bart: 220-0223.

Ladies bike, Ross 5-speed, 3 years old, good condition, \$85. Call 253-4526 (day), 220-3851 (eve). 11/22

'74 VW Dasher wagon - a reliable older car; runs well, good body, stereo/cassette. Ideal for local transportation and a handy wrench. \$1,100. Call Craig, 229-0038. 11/22

Older Raleigh 10-speed grand prix bike; fair condition - needs pedal, brake, tune-up, \$40. Guild T100 semi-acoustic electric guitar, sunburst paint, very good condition, \$200. Call 220-3696 from 6-10 p.m. 11/22

IBM Model C typewriter, rocking chair, antique mahogany table, B/W Zenith TV, '74 Mustang II. Prices negotiable. Call Jennifer at 229-4322 before 10 p.m. 12/6

BEDROOM SUITE: 5 piece, solid pine, fine quality and excellent condition. Convertible double or queen size bed frame, tripe dresser, hutch mirror, chest-of-drawers, night stand. Cost \$1275 new. Sacrifice for \$850. Without night stand \$750. Call 565-0942. 12/6

1981 Honda Prelude, navy with beige interior, sunroof, 5-speed, 52,000 miles, \$6,200. Going to Germany! Call 874-9354 after 5 p.m. 12/6

1971 Chrysler Newport, very good condition, must see to appreciate, \$895.00. Call 564-9291 after 6 p.m. 12/6

Two twin-sized Simmons Beautyrest mattresses and box springs, plus metal frames, 2 years old. Each used only a dozen times. New \$259 each. Will sell and deliver locally both for \$250. Also matching pair mahogany antique dressers with solid brass fittings. Best offer. Call 253-0288 after 5 p.m.

WANTED

Two or three bedroom apt. or house beginning Jan. 1 for visiting faculty member and family. Contact Marlene Jack, Fine Arts Dept. ext. 4385 or 4499. 12/6

Electric keyboard. Call A. Pendleton, ext. 4654.

ROOMMATE WANTED to share 2 bedroom apt. with male grad. student. 3 miles from campus. Rent \$157.50 per month plus 1/2 utilities. Available immediately. Call 565-2754. 12/6

FOR RENT

Condo for Rent, 2 BR, 1 BA, fully furnished. Ideal for 4 students. Jamestown Commons. Call Stan at 565-2855. Deposit required. 12/6

2 bedroom apt. in town; \$375 month plus utilities. Call 229-1793 after 6 p.m.

Ideal for three students. Beginning around Jan. 1. Condo for rent. Newly furnished, 2 BR, 1 bath. Jamestown Commons. Deposit required. Call 229-2430 after 6 p.m.

Female roommate wanted to share 2 bedroom apt. with female grad. student and working woman. Quiet and non-smoking. Avail. Jan. 1. \$140+electricity. Call Barbara, 229-2862.

2 bedroom condo, Jamestown Commons; \$450 month plus utilities; call 229-6430.

House for rent - mid-January 1984 to mid-August 1984. Semi-furnished, 1-1/2 miles from College. 3 bedrooms, 1-1/2 baths. \$450 per month, plus utilities, plus security deposit. No smokers, no pets. Call 220-1086 or 253-4318. 11/22

LOST

Gold wire rim glasses, plastic lenses. Return to Audrey Hudgins; 206 Barrett Hall, x4352, College Station Box 7029.

FOUND

Texas Instruments calculator. Millington Aud., call x4352.

Pair wire-rim glasses in N.W. corner of Lacrosse field. Call Carl Vermeulen, ext. 4240, to claim.

A woman's ring in third floor conference room, James Blair Hall. To claim, call Susan, ext. 4774.

Found - man's digital watch at the large intramural field on Derby Day, Oct. 29. Call Julie at 220-2189 to identify and claim. 11/22

Ladies Bulova wristwatch Nov. 15 in Morton Hall. Call ext. 4313 to identify.

Miscellaneous

Dog/FREE Lab/Samoyeo Mix Last chance before SPCA. Moving - can't keep. 9 mos. female. Ext. 4651.

Internships

Continued from p. 3.

make independent decisions, pay close attention to details and work well with people. Application consists of an up-to-date resume, including references, and a brief cover letter stating interest in the position. Deadline for application is Dec. 16.

(See announcement in Internship Book I, Environment section.)

Work-Study Intern Program

The U.S. and Foreign Commercial Service, Office of Foreign Service Personnel is launching an Overseas Work-Study Intern Program at selected posts for college students to volunteer their services for 10 to 12 weeks from late spring to early fall. The purpose of the program is to encourage students to consider careers in the field of international trade and to aid the Department in the fulfillment of its mission.

Interns must be U.S. citizens, 21 years of age, and university or college junior, senior, or graduate students who have completed some course work relevant to the type of work the applicant wishes to perform for the Department.

Application deadline is Dec. 1. (See the announcement in the Internship Book I, International Section.)

William and Mary NEWS

The William and Mary News is published weekly by the Office of University Communications during the academic year, except when the College is in recess, and twice each month in June, July and August.

Barbara Ball, editor
Publications Office, production

News items for the News should be in hand at James Blair 310 by 5 p.m. on the Thursday preceding the Tuesday of publication. Short items may be phoned in to the office at ext. 4331. Please turn in information about coming events as soon as possible, at least two weeks before the event is to take place.

Classified advertisements may be submitted by members of the College Community, faculty, staff and students. The rate is \$3 for three consecutive insertions of not more than 40 words each.