

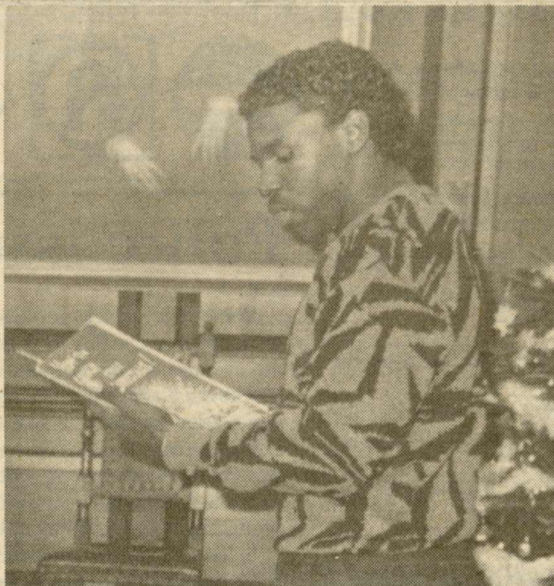
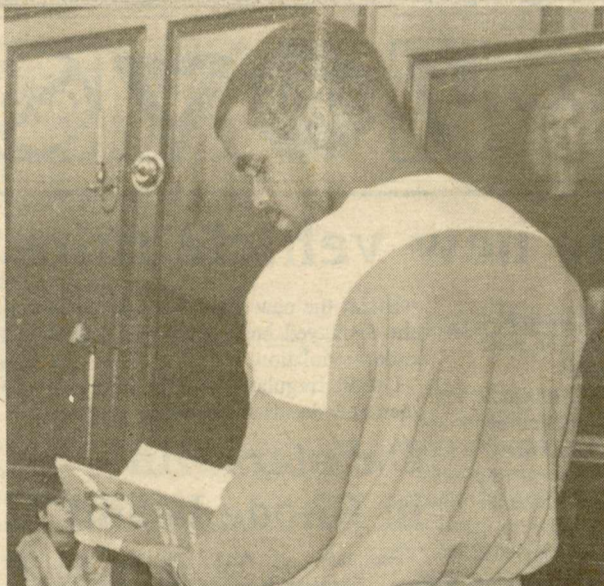
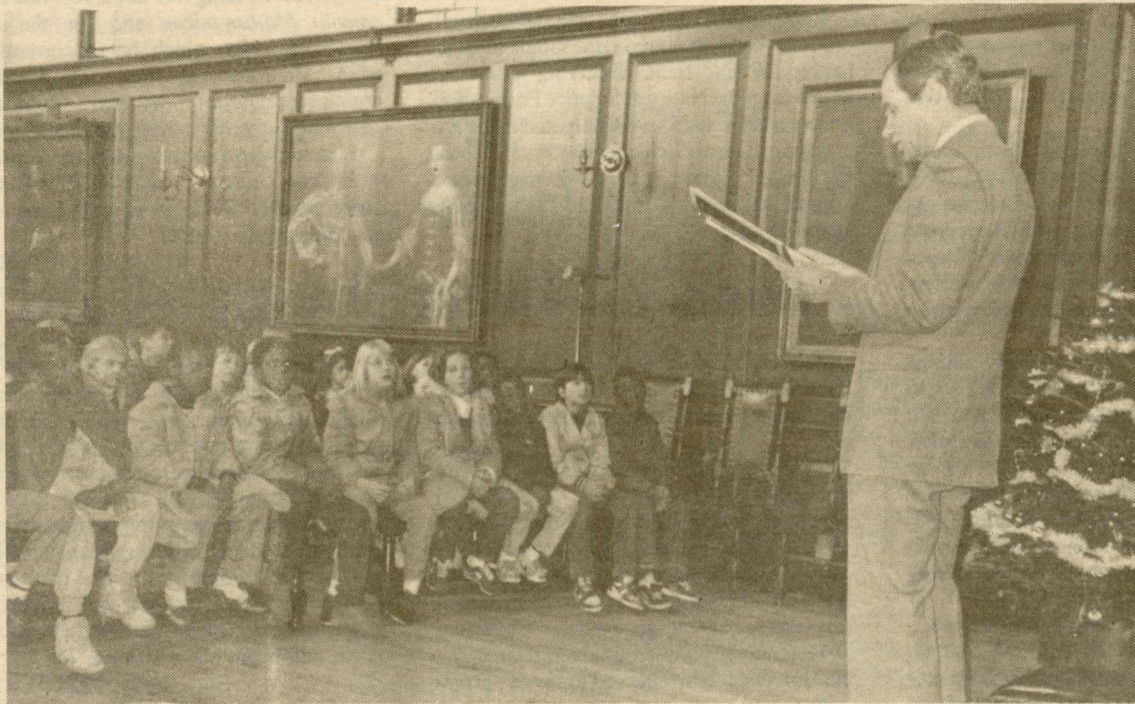
William and Mary NEWS

Volume XVI, Number 15
Wednesday, December 10, 1986

A WEEKLY NEWSPAPER
PUBLISHED for and about the FACULTY, STUDENTS
and STAFF of the COLLEGE of WILLIAM and MARY.

Non-Profit Organization
U.S. Postage PAID at Williamsburg, Va
Permit No. 26

Children enjoy storytime



President Verkuil (top left), was one of the readers this year at the Christmas Storytime held in the Great Hall of the Wren Building for area school children. Other readers included two top Tribe athletes, Archie Harris (far left), and Michael Clemons who was just selected to the Kodak All-American Division I-AA football team. Santa, (top right), was the VIP visitor who thrilled the young audiences throughout the week. Under the beard is Dennis Cogle, who retired this year as director of planning and budget.

Sociologist gathers in reminiscences of Christmas

Wayne Kernodle, professor of sociology, has for some time been collecting sociological data on a less structured format than the traditional one.

Rather than directly seeking answers to preset questions on a narrowly prescribed data sheet, Kernodle has done extensive field interviewing, often taking time to gain a friendly rapport before actually asking questions. It takes more time, says Kernodle but he thinks it is worth it. People are more willing to open up and tell their true feelings, he says.

In reporting, Kernodle is also true to the people he interviews. He uses their colloquialisms and speech patterns, making no attempt to edit in proper usage.

For a paper "Remembrance of the Homeplace: Food, Family Tales and Ritual Celebrations," he visited nutrition centers set up by the federal government for the elderly in the area and talked to people about their reminiscences, particularly as they related to family rituals surrounding food.

Kernodle's project was part of a larger project on "Sharing the Past," sponsored by the Virginia Foundation for the Humanities and included the Peninsula Agency on Aging and Christopher Newport College.

The information gathered, says Kernodle, confirms the fact that the rituals of food are important to people and continue with them through their lives. These findings, he points out, are important for nutritionists today in patterning programs for the elderly. It is important, he says, to know that the rituals of food consumption and preparation must be taken into account because elderly people will not abandon these patterns to embrace a new concepts. Parts of the old need to be interwoven with the new, says Kernodle.

Despite the lessening of time spent in food preparation today, due to packaged and convenience foods, Kernodle does not see rituals associated with meals disappearing because those rituals bring people together.

The following is excerpted from his report.

Christmas

Role playing and role interaction among family members in the preparation and sharing of food during the Christmas season was a more pervasive activity among the storytellers than the giving and receiving of gifts. Despite the variances in the socio-economic, religious, and regional backgrounds of the participants, the content of their stories was similar with respect to the efforts made by family members to provide, prepare, and share food that has special significance for those in their primary relationship and which furthered the bonding among them.

Momma and we girls would start cooking two or three weeks before Christmas and throw food up on the shelves out there in the food closet - and it would keep there 'till

Christmas, because there aint no heat out there, see.

On Christmas Day we had egg nog and the children could have a s'all cup of it. I don't know how they made it but they used some liquor and brandy my daddy made from his corn and apples. All the family would join together and drink this egg nog and eat some cake, and then we opened our presents.

* * *

At Christmas when I was a child my mother cooked ten or twelve cakes - she cooked one for each of we eleven children with a different icing on it - chocolate, spice, coconut, brown sugar, lemon - So everybody got the one they liked most at Christmas. My father and brothers would go out and kill a turkey or one of the guineas that had went into the back woods and wouldn't come back. You

Continued on p. 4

Visitors respond to resolution on Flat Hat editor

At its meeting Friday, Dec. 5, the Board of Visitors adopted a student resolution asking it "to make amends" with Mrs. Marilyn Kaemmerle Quinto, editor of *The Flat Hat* in 1945 who was asked to resign for writing a pro-integration editorial.

In a letter to Mrs. Quinto released to reporters Friday, Rector Anne Dobie Peebles reported the board's action and responded to the students' request that the board also recognize Mrs. Quinto's "achievements and contributions as an acknowledgement of current board attitudes toward desegregation and minority enrollment."

"Let me assure you," wrote Miss Peebles, "that the College continues to attract people with courage and vision, and you would be gratified at the changes on the campus over the past 40 years."

The letter also stated that "the employment of minority faculty and staff members has long had a very high priority for us, and we have made great progress in bringing outstanding black scholars to the campus. We have also made significant progress in our recruitment and retention of black students."

The letter ended with an invitation to Mrs. Quinto to visit the campus: "Be assured that you will be genuinely welcomed and that we look forward to your homecoming."

In its Committee on Athletic Policy, the board heard a report by Larry Wiseman, chairman of the collegewide Athletic Policy Advisory Committee, that the committee had serious reservations about the mandatory drug testing of college athletes. The faculty of arts and sciences also passed a resolution approving the committee's findings and calling for a review of the mandatory drug testing policy, Wiseman said.

Responding to these concerns, President Verkuil said he would work to establish a collegewide task force to review the College's drug testing policy and to make recommendations on its future implementation.

The board approved various personnel appointments, including a new dean of the faculty of arts and sciences and a director of financial aid (see related stories).

In other action, the board approved the continuation of agreements through June 30, 1988, with Capitoline Investment Services, Inc., of Richmond for the management of its pooled endowment and with United Virginia Bank for custodial services of the securities managed by Capitoline.

Also passed were changes in the motor vehicle regulations on campus (see related story), and a change in the Marshall-Wythe School of Law graduate tax degree from "Master of Law and Taxation" to "Master of Laws."

In its Committee on Buildings and Grounds, the board heard progress reports on the status of the university's master plan and on the formation of the Williamsburg Community Planning Partnership. James J. Connolly, director of facilities, planning and construction, reported that the Muscarelle Museum addition is expected to be completed by the end of March and the library addition by the end of April.

New appointments

The following appointments were also approved by the board to fill existing vacancies:

Eric O. Ayisi, assistant to the provost for off-campus program development, effective, Jan. 1. A graduate of the University of London, Ph.D., 1965, Ayisi has been a member of the anthropology faculty since 1980.

James P. Bennett, part-time lecturer in dance, effective Dec. 1 through May 15, 1987. This is a temporary, restricted appointment. Bennett has been dance accompanist since 1984.

Alan E. Boyle, associate professor of law, effective Aug. 16 through Dec. 31, 1987. This is a temporary, restricted appointment. Boyle, who received a B.A., B.C.L. and M.A. from Oxford University, is currently a lecturer at Queen Mary College of the University of London.

Robert C. Harriss, part-time adjunct professor of marine science, Virginia Institute of Marine Science, effective Jan. 15 through

May 12, 1987. This is a temporary, restricted appointment. Harris, who received a B.S. from Florida State University and a Ph.D. from Rice University, is currently senior scientist, atmospheric science division, NASA Langley Research Center.

Hillary W. Holladay, full-time development writer, effective Nov. 1 through June 30, 1987. Holladay has been a writer for the publications department and a free-lance book reviewer

James M. Patton, full-time associate professor of education, effective Jan. 1 through June 30, 1987. This is a temporary, restricted appointment. A graduate of Indiana University, Ed.D., 1976, Patton is currently director of teacher education and certification, Department of Education, Division of Personnel and Administrative, Commonwealth of Virginia.

Alan J. Ward, acting dean of graduate studies, Arts and Sciences, effective Jan. 1

through Aug. 31, 1987. Ward is currently professor of government.

Hill B. Wellford Jr., part-time lecturer in law, effective Jan. 1 through May 15, 1987. This is a temporary, restricted appointment. Wellford received his J.D. from the University of North Carolina Law School and is currently a partner in Hunton and Williams. He is also chairman of the Labor Relations and Employment Law Committee of the Virginia Bar Association.

David Lutzer is new arts and sciences dean

David J. Lutzer, professor and chairman of the Department of Mathematics and Statistics at Miami University of Ohio, has been named the dean of the faculty of arts and sciences.

Lutzer's appointment was approved at a meeting of the university's Board of Visitors Friday, Dec. 5, and announced by Provost Melvyn D. Schiavelli.

Lutzer, 43, has chaired the Miami mathematics and statistics department since 1982, supervising more than 50 full-time faculty members on three campuses and 24 graduate assistants enrolled in several master's degree programs. Miami University is a state university with a selective admissions policy and a strong liberal arts tradition.

"We have reason to be extremely pleased with Mr. Lutzer's appointment," Schiavelli said. "We have attracted not only a top-flight academic administrator, but a renowned scholar as well."

President Paul R. Verkuil said Lutzer "perfectly exemplifies in his professional life William and Mary's commitment to excellence in undergraduate education and to contributing significantly to research."

Prior to his work at Miami, Lutzer was a member of the faculty of Texas Tech University, holding the rank of visiting professor from 1976 to 1977, associate professor from 1977 to 1978 and professor from 1979 to 1982.

He began his teaching career as an instructor at the University of Washington in 1970, moving to assistant and associate professorships at the University of Pittsburgh, where he taught from 1970 to 1978.

A 1964 Rhodes scholar, Lutzer received his undergraduate degree in mathematics from Creighton University in Omaha, Neb., and a

diploma in advanced mathematics in 1966 from Oxford University. He received his Ph.D. from the University of Washington in 1970.

Lutzer, whose academic specialty is topology, has been an active contributor to scholarship in the field, receiving numerous grants from the National Science Foundation, among others. He also participated in the National Academy of Sciences Eastern European Exchange Program in 1977, when he went to Prague, and in 1978, 1980 and 1983 when he visited Warsaw.

Irish to direct financial aid

Edward P. Irish, associate director of student financial aid at Kent State University, has been named director of student financial aid.

A member of the Kent State administration since 1984, Irish was director of financial aid at Ohio Wesleyan University from 1977 to 1984, also serving as assistant to the dean of admissions there from 1981 to 1984. He earlier spent three years as director of financial aid at Georgia Southern College.

He received his undergraduate degree from the University of Maine and a master's in pub-

lic administration from Kent State in 1974. At Kent State, Irish has been responsible for the daily operation of a \$35 million aid program at the public university of 20,000 students. He developed personal computer programs to supplement a mainframe system, is responsible for counseling and awarding for graduate students and implemented "Tele-analysis," an on-line verification package developed by Financial Analysis Service.

Irish, who replaces Edward K. McCormick, will begin his new duties Jan. 1.



Police issue new vehicle rules

Some new vehicle regulations have been formulated, according to Thea Stanton, parking manager for the Campus Police.

The most noticeable change is that vehicle registration for the new year will begin June 1. Stanton says that this change from fall registration is an attempt to spread the process over a longer period and avoid the rush at the beginning of classes in the fall.

Students may transport their luggage and other belongings to the College in a motor vehicle if they can provide for removal of the vehicle from College property within seven days after classes begin for a semester or summer session. A temporary permit will be required for such vehicles during that period.

Traffic and parking citation fines, issued under College regulations, will be \$10 each. Unpaid citations, overdue by 10 calendar days will be subject to a \$5 late fee. In the event the citation is appealed, the late fee will not apply until 10 calendar days after the traffic appeals committee denies the appeal.

Wheelock fees have been increased from \$5 to \$20.

The regulation for parking on the Cary Field/Bryan and Student Health Services parking lots on the Saturdays of home football games has been amended. Previously, parking in these lots was permitted until 10 a.m.; it is now prohibited after 9 a.m.

Faculty and staff members requiring temporary handicap parking may make application through the Office of Employee Relations and Affirmative Action. Students may make similar application through the Handicapped Student Services Office.

Permanent handicap license plates or placards may be obtained from the Division of Motor Vehicles.

Under the new regulations decals or permits displayed improperly will constitute a no-decal violation.

Updated regulations will be made available when new decals are issued.

Debaters win in Rhode Island

The team of Andy Shilling and Tim Domin defeated Harvard to take top honors at the University of Rhode Island debate tournament over the weekend.

The team of Sean Reilly and Laura Forester were 3-3 in the preliminaries. Forester was named top speaker. Shilling was fourth and Domin, fifth.

At Towson State in Baltimore, four teams competed in the varsity division. Douglas Clarke and Sayoko Blodgett-Ford were 4-2 in the preliminaries. They defeated Cornell in the quarterfinals and went on to the semifinals where they lost to a team from the University of Miami.

Joe Howard and Ron Westfall were 4-2 in the preliminaries, but were ranked 9th for the finals, just missing the cutoff.

Tony Koselecky and Mike Kaplan were 2-5 in the preliminaries.

In speaker awards, Ron Satterwhite placed third; Clarke, second.

In the novice division Rich Evonitz and Tracy O'Connor were 5-1 in the preliminaries. They met Emerson College in the semifinals and won through to the finals where they lost to a team from John Carroll University.

The team of Jenny Krieger and Coy Short were 3-3 in the preliminaries.

Evonitz placed second in speaker awards; Krieger, fifth.

Resignations

Two resignations were accepted by the board.

Shirley E. Ellis, assistant director of the Center for Executive Development, effective Dec. 15.

Edward K. McCormick, director of student financial aid, effective Jan. 31.

Leaves of absence

The board also approved three leaves of absence.

George W. Grayson, professor of government and a member of the House of Delegates, was granted leave to pursue his duties with the General Assembly, effective Jan. 14.

Robert J. Scholnick, dean of graduate studies Arts and Sciences and professor of English, has been granted leave from Jan. 2 through Aug. 31, 1987, for the purpose of accepting a National Endowment for the Humanities fellowship.

Carl W. Vermuelen, associate professor of biology, was granted leave for the spring semester to accept a Fulbright Fellowship.

Calendar note

In planning for the Spring 1987 semester, students are reminded that the academic calendar that appears in the *Student Handbook* is incorrect. The academic calendar was changed after the *Handbook* went to print. Please refer to the *College Catalog* for the correct calendar for Spring 1987.

Calendar

WEDNESDAY, DEC. 10
Exam Period (Through December 18)
*At Ash-Lawn Highland (Charlottesville): A Victorian Family Christmas, 5:30 and 7:30 p.m. Reservations required.

FRIDAY, DEC. 12
Physics Colloquium: "The Los Alamos Cygnus X-3 Experiment, by R. Carlini, Los Alamos National Laboratory, Small 109, 4 p.m.

SATURDAY, DEC. 13
*At Ash-Lawn-Highland (Charlottesville): Cut Your Own Christmas Tree, 10 a.m.-4 p.m. Donations requested.
Wren Chapel organ recital, 11 a.m.
Yule Log Ceremony, Wren Courtyard, 6 p.m.

*At Ash-Lawn Highland (Charlottesville): Christmas Through the Years, 7, 7:45 and 8:30 p.m. Reservations required.
*Chamber Ballet Company Presentation: "The Nutcracker," PBK, 8 p.m. Children, \$4; senior citizens, \$5; others, \$7. (Additional info: 229-1717.)

SUNDAY, DEC. 14
*At Ash-Lawn-Highland (Charlottesville): Cut Your Own Christmas Tree, 10 a.m.-4 p.m. Donations requested.
*Chamber Ballet Company Presentation: "The Nutcracker," PBK, 2:30 p.m. Children, \$4; senior citizens, \$5; others, \$7. (Additional info: 229-1717.)
Grand Illumination, Colonial Williamsburg

MONDAY, DEC. 15
Wren Chapel organ recital, 11 a.m.

TUESDAY, DEC. 16
Wren Chapel organ recital, 11 a.m.

WEDNESDAY, DEC. 17
Wren Chapel organ recital, 11 a.m.

THURSDAY, DEC. 18
Wren Chapel organ recital, 11 a.m.

FRIDAY, DEC. 19
Wren Chapel organ recital, 11 a.m.

SATURDAY, DEC. 20
*At Ash-Lawn-Highland (Charlottesville): Cut Your Own Christmas Tree, 10 a.m.-4 p.m. Donations requested.
Wren Chapel organ recital, 11 a.m.
*Men's basketball v. Christopher Newport, W&M Hall, 1 p.m.

SUNDAY, DEC. 22
*At Ash-Lawn-Highland (Charlottesville): Cut Your Own Christmas Tree, 10 a.m.-4 p.m. Donations requested.
Wren Chapel organ recital, 11 a.m.

MONDAY, DEC. 23
Wren Chapel organ recital, 11 a.m.
*At Ash-Lawn-Highland (Charlottesville): Afternoons of Holiday Song and Cider, 4 p.m. Admission: adults, \$5; children, \$2.

TUESDAY, DEC. 24
Administrative Christmas Vacation (Through Jan. 2)
Wren Chapel organ recital, 11 a.m.
*At Ash-Lawn-Highland (Charlottesville): Afternoons of Holiday Song and Cider, 4 p.m. Admission: adults, \$5; children, \$2.

WEDNESDAY, DEC. 26
Wren Chapel organ recital, 11 a.m.
*At Ash-Lawn-Highland (Charlottesville): Afternoons of Holiday Song and Cider, 4 p.m. Admission: adults, \$5; children, \$2.

THURSDAY, DEC. 27
Wren Chapel organ recital, 11 a.m.
*At Ash-Lawn-Highland (Charlottesville): Afternoons of Holiday Song and Cider, 4 p.m. Admission: adults, \$5; children, \$2.

FRIDAY, DEC. 28
*At Ash-Lawn-Highland (Charlottesville): Afternoons of Holiday Song and Cider, 4 p.m. Admission: adults, \$5; children, \$2.

SATURDAY, DEC. 29
*At Ash-Lawn-Highland (Charlottesville): Afternoons of Holiday Song and Cider, 4 p.m. Admission: adults, \$5; children, \$2.

SUNDAY, DEC. 30
*At Ash-Lawn-Highland (Charlottesville): Afternoons of Holiday Song and Cider, 4 p.m. Admission: adults, \$5; children, \$2.

SATURDAY, JAN. 3
Wren Chapel organ recital, 11 a.m.
Men's basketball v. Richmond, W&M Hall, 1:30 p.m.

MONDAY, JAN. 5
Women's basketball v. Manhattan College, W&M Hall, 7:30 p.m.

WEDNESDAY, JAN. 7
Oceanography for Landlubbers, Watermen's Hall, VIMS, 7:30 p.m.
Men's basketball v. Towson State, W&M Hall, 7:30 p.m.

SATURDAY, JAN. 10
Wren Chapel organ recital, 11 a.m.

MONDAY, JAN. 12
Men's wrestling v. Syracuse, Blow gym, 4 p.m.
Women's basketball v. East Carolina, W&M Hall, 7:30 p.m.

THURSDAY, JAN. 15
Spring semester begins

EXHIBITS

MUSCARELLE MUSEUM: "Animation Art from the Disney Studios" (Nov. 28 through Jan. 11)

ZOLLINGER MUSEUM: "The U.S. Occupation of Japan" (Through Jan. 18)

Teachers exam

All students who expect to be certified to teach upon graduation must take the National Teachers Examination. This examination will be given on campus on Saturday, March 7, 1987 (for the Core Battery Tests), and on Saturday, March 28, 1987 (for the Specialty Area Tests). Registration for these tests must be received by the Educational Testing Service in Princeton, N.J., several weeks before each of the above dates. Application forms and additional information may be obtained in the Office of Educational Placement, Jones 310, ext. 4312.

Auditions set

Neil Simon's award-winning *Brighton Beach Memoirs*, directed by Louis Catron, is the next play on the bill for W&M Theatre with performances Feb. 26, 27, 28 and March 1. Auditions will be held Jan. 14 and 15, by appointment only. Call backs will be Jan. 16. Copies of the script are available on overnight reserve in Swem Library. Auditions for two African plays, "A Riddle of the Palms" and "Crocodiles" by Femi Euba will be held Jan. 17 and 18 at 7 p.m. at PBK in the Lab Theatre. Two provisional copies of the scripts are available for reading in the Theatre office. See Linda Williams.

Muscarelle sets open house Sunday

A holiday open house will be held at the Muscarelle Museum of Art, Sunday, Dec. 14, 1-4 p.m. The event, co-sponsored by the museum and the W&M College Women's Club, is being offered to enable families to participate in a festive holiday occasion while viewing an exhibition of Walt Disney animation art.

Plans for the open house include refreshments, performances by local youth choral groups and an exhibition of art from the museum's children's classes. The Children's Art exhibition will be on view Dec. 10-14 and will feature art created by grade-school students who participated in the museum's Saturday classes this fall.

Library exhibit on occupation

"The U.S. Occupation of Japan" is the title of a new exhibit that will be on display at the Zollinger Museum of Swem Library through Jan. 18. The exhibit contains photographs and artifacts on loan from the MacArthur Memorial that document conditions in Japan during its occupation from 1945 to 1951. It was arranged through the efforts of Jenny Blount, president of the East Asian Studies Association, which is sponsoring the exhibit. Photographs taken by the Occupation forces show not only the devastation caused by incendiary and nuclear bombing in Japan, but also the relief and rebuilding efforts carried

out under the authority of Gen. Douglas MacArthur as supreme commander for the Allied Powers. Artifacts on display include two Japanese swords and some fine Japanese porcelain, which were gifts to MacArthur from the Japanese people in gratitude for his able leadership. Notes by Peter G. Zarrow, visiting assistant professor of history, tie the displays together by providing additional historical background. The Zollinger museum, which is open daily, will be closed for Christmas break, Dec. 23-Jan. 5.

Plumeri hosts day on Wall Street

The Office of Career Services has arranged with Tulane University and several other institutions to conduct a job fair, Jan. 9 in Chicago and Jan. 12 in New York City. Planners expect more than 25 employers to be present to interview students. William and Mary is scheduled to host the job fair next year. College participants this year will include Carlton College, Case Western Reserve, Davidson College, Denison, Emory, Southern Methodist, Trinity and Tulsa.

Plans are being coordinated by Pam Garrette in the Office of Career Services. Also, Joseph J. Plumeri, senior executive vice president at Shearson Lehman Brothers, Inc., and an alumnus, will host a day on Wall Street for 20 M.B.A. students Jan. 14. Students will be picked up by a Shearson limo at the airport at 8 a.m. and will have a full day of meetings and tours before leaving that evening. Plumeri has been hosting this program for the past two years.

Locke plays Santa Claus to aid student emergency loan fund

The AMPAD Corporation of Holyoke, Mass., an international firm dealing mainly in school and office supplies, has made a \$5,000 donation to the student emergency loan fund. How the corporate gift came to the College is a story in the true spirit of the holiday season. This year for the first time AMPAD decided as a goodwill gesture to offer a sweepstakes award to one of its customers. The names of the more than 2,000 college bookstore managers and several more thousand common traders were put in a hat, and Bruce Locke, manager of the College Bookstore was the lucky winner.

dined in style while the yacht cruised along the East Coast. About the time Locke found out about his prize, he was conversing with Sam D. Sadler, dean of students, about the difficulty of getting money for the student emergency loan fund, which makes short-term loans to students without interest. "I got thinking about the prize," said Locke. "I thought it would be a good thing to trade off for the monetary value of the trip and make a donation in that amount to the emergency fund." Locke figured that the trip would cost AMPAD about \$5,000. He made his suggestions to the corporation and they agreed, sending him a check for \$5,000.



Sam Sadler, dean of students, receives a check for \$5,000 from Bruce Locke for the Student Emergency Loan Fund.

The prize was a five-day trip for five people, all expenses paid, on the corporation's yacht. The five would be wined and

"It worked out very well. I am really tickled pink, elated," said Locke. "I can see it as

Continued on p. 4.

Employment Classified Advertisements

The following positions at the College are open to all qualified individuals. Call 229-JOBS for further information, or visit the Employee Relations Office in Thiemes on Richmond Road for information and application forms, Monday-Friday, 8 a.m.-4 p.m. An EEO/AA employer.

SLIDE LIBRARIAN - OFFICE SERVICES AIDE (unclassified) - Salary range \$4.72-\$6.45 per hour; part time, approximately 20 hours per week. Location: Fine Arts Department. Deadline Dec. 10.

OFFICE SERVICES ASSISTANT (unclassified) - \$5.64 per hour, part time, approximately 25 hours per week. Location: Center for Honors and Interdisciplinary Studies. Deadline Dec. 12.

CASHIER (unclassified) - Starting salary \$4.72 to \$5.64 per hour. Will work on an on-call basis, and hours will vary depending upon Bookstore needs. Location: Bookstore. Deadline Dec. 12.

OFFICE SERVICES ASSISTANT (Grade 4) - Salary range \$11,735 to \$16,021 per year. #650. Location: President's Office. Deadline Dec. 12.

MARINE SCIENTIST B (Grade 12) - Salary range \$23,936-\$32,682. #136. This is a 12-month restricted position ending Dec. 31, 1987. Location: VIMS (Physical Oceanography and Environmental Engineering). Deadline Dec. 15.

Regional library offers new courses

Three new courses will be offered at the Williamsburg Regional Library beginning in January.

American Sign Language will be taught on Thursdays, Jan. 15-Feb. 19, 7:30-8:30 p.m. Instructor Hannah Mason will use *The Joy of Signing* as her text. Tuition, including text, will be \$21. Registration closes Jan. 8.

Lucille Rowe will conduct two knitting classes on Tuesdays, Jan. 20-Feb. 24. One class will meet 10 a.m.-noon; the other 7-8:45 p.m. Beginners will be accepted into both classes; students will be given a choice of garment patterns. The cost for the course will be \$16. Registration closes Jan. 16. A list of materials will be available at the time of registration.

Boden Porterwood will continue his watercolor classes on Wednesdays, Jan. 14-Feb. 25, 10 a.m.-noon. Beginners will be accepted. Tuition fees are \$35. Registration closes Jan. 10.

Students may register at the Auxiliary Services desk or by mailing their name, address, phone number, class title and check to Williamsburg Regional Library, 515 Scotland St., Williamsburg 23185.

Classifieds are carried as a service to members of the College community only. There is a charge of \$3 for an advertisement of 40 words or less in three consecutive issues. Copy changes constitute a new advertisement. Copy and payment should reach the News Office (James Blair 310A) no later than 5 p.m. the Friday preceding the first insertion.

FOR SALE

1979 Chevy Malibu Classic Wagon, runs well - reliable, \$2,000 or best offer, excellent second car. Call Lenora, ext. 4477 or 877-2198 after 6 p.m.

'82 Firebird, white, immaculate condition - interior/exterior, optional V-6 engine, 50,000 miles, garage kept. Call 253-1510 evenings.

Rattan living room furniture set, eight pieces, excellent condition. Call 253-1510 evenings.

84-inch sofa and matching club chair. Brown-and-beige plaid. Excellent condition. Both for \$300. Call 229-4513, after 5 p.m.; 9 a.m. to 5 p.m., ext. 4332.

B-flat trumpet, Holton Collegiate Professional, in excellent condition; dual-alloy bell for brilliant resonance; case and mouthpiece included. Contact Ted at 253-4364 and leave message. A perfect Christmas present. \$450.

Electric typewriter - Smith Corona, portable (sterling auto-12), with padded carrying case. Priced to move, \$100.

Teknika 6510, brand new in the box, CATV converter and television wireless TV remote-control tuner, \$125.

Chevette, 1982, 2-door, maroon, good tires, completely tuned up, radio, exterior in good condition, 95,000 miles. \$695 or best offer.

For all of the above items, call 229-0596 between 11 a.m. and 1 p.m.

Oak buffet attractive, w/ brass fitting, not too big, \$75. Oak dining table (needs work), \$35. Call 229-5459.

'80 Chevrolet Citation, 2-door hatchback, power steering and brakes, air conditioner, V-6 automatic. Silver, 63,000 miles; \$1,100. Call 229-2549 after 7 p.m.

Chrysler "LeBaron" '82. AM/FM stereo tape, automatic transmission, air conditioning, 4-cyl., 2-door, hardtop. White with really nice half-white vinyl top, burgundy interior. Like new. Call ext. 4547 or 229-7831, evenings.

FOR RENT

Graduate students: Furnished one-bedroom, living room and bath, no smokers. Available Dec. 10. Call 253-5775.

Furnished house, two blocks from College and law school. Available Dec. 15. Non-smokers, no children or pets. Call 253-5775.

Two rooms in 3-BR house in Williamsburg. Furnished and has washing machine. Rent \$140 per month + utilities. Available 1/1/87-6/1/87. Please call Jane at 642-7154, 9 a.m.-4 p.m. or 229-5365 after 5 p.m.

Village Green. Rent from owner with option to buy. Deluxe townhouse in ideal location. 2-BR, 2-bath. Many extras. \$650 per month. Call 229-5557.

1-BR apartment, located approximately 3-4 miles from the College. Call 564-9135, after 5 p.m.

Room. Prefer graduate/law student, female, nice apartment, reasonable, 1 1/2 miles from campus. Call 229-8946.

WANTED

Large clay pots. Biology department greenhouse repotting project. Leave pots and your name on the loading dock at the rear of Millington Hall. Thank you for your assistance. M. C. Mathes, ext. 4458.

Faculty member seeks sitter for 10-month-old, Tuesday and Thursday afternoons, second semester. Call 229-0244.

Will pay for a copy of *Freak-Out* by Zappa and Mothers of Invention. Call Houle or Elliott at 220-0997.

LOST

Set of keys on ring with black plastic whistle. Please call Lynette at ext. 4215.

A solitaire diamond ring in vicinity of James Blair Hall. Please call Patsy Morales, Purchasing, ext. 4215.

A reward is offered for information leading to the return of a 6-foot-square wall hanging from Pakistan. It has been missing from the office of Rita Wright in anthropology, Washington Hall, since Oct. 13. Please contact either Wright at ext. 4369 or the Campus Police at ext. 4596.

Food rituals at Christmas

Continued from p. 1.

got to shoot a guinea in the head - if you miss, it aint no use to shoot at him agin 'cause you aint a gonna hit him. But we had one every Christmas, I remember. My mother also made this wine and she would serve cakes and wine to company when they came to visit at Christmas.

Now, my daddy, he would cut a piece out of a cake and have a cup of coffee on Christmas Eve. Then, he would leave this cup and saucer with cake crumbs on it on the table and tell us Santa Claus had come in and had his lunch while we were all asleep - to fool us. We believed it a long time

* * *

All of the family would come back together. They would visit a whole week at Christmas time and everybody is gathering around and eating together. Tables is set up on the sides and in the halls for the children to eat. Then, you go to visit with cousins and aunts all around and everybody serves cakes and pickles and this sweet wine. Everybody is through their work, see, so they can visit around with the family.

For Christmas we had some cured ham or a baked ham, some collard greens and sweet potatoes and sometimes, maybe, a fruit pie made from canned peaches - whatever we raised on the farm and momma put up. We didn't buy nothing for Christmas 'cept maybe a toy or two and some hard candy and one orange or tangerine we got under the tree.

My mother would cook for Christmas such as we had. She raised chickens, so we had that. I was scared of chickens and couldn't wring no neck off, so I had to go out and get a hen and chop its head off with a hatchet. We had biscuits and corn bread and gravy -

MISCELLANEOUS

INSTRUCTION

Piano lessons: Experienced teacher with master's degree from Peabody Conservatory offers piano and music theory lessons for all ages and levels. Reasonable rates - Lafayette Manor location. Gayle Pougher, 565-0563, evenings.

W&M faculty guitarist now accepting private students. Instruction in all styles. Call ext. 4374, days, or 229-2618 evenings. (12/20)

A friendly, playful black kitten, free to the right home. Call 253-4506.

Students! Use your W&M computer account from home or dorm. Rent a terminal and modem. Call 898-5932.

Gift from Locke

a long-term benefit to students." The trip would have been nice, Locke concedes, but the donation pleases him more.

"I've worked at the College a long time, and it is hard to find the opportunity to make a significant contribution that has a real impact. This just fit the opportunity," said Locke.

He also added that he likes the idea of the gift because he sees the need for the emergency fund when students come to the bookstore and do not have enough money for books. Also, says Locke, he would like to break the stereotype of retailers as people who are all business and think only of their cash register receipts.

and maybe some dried beans and turnips. We didn't have too much to spare when I was growing up, but we would always appreciate what we had; and, at Christmas we always gave a special prayer of thanks for whatever we had to eat at that time.

Last fall issue

The final issue of the semester will be distributed Wednesday, Dec. 17. Deadline for ads, news, is Friday.

WILLIAM AND MARY

NEWS

The William and Mary News is issued weekly during the school year for faculty, staff and students of the College and distributed on campus Wednesday afternoons.

News items and advertisements should be delivered to the News Office, James Blair 310A, no later than 5 p.m. the Friday before publication. Notices for the calendar should be delivered to the News Office no later than 5 p.m. the Wednesday before publication.

Barbara Ball, editor
Publications Office, production
News deadline: Fridays, 5 p.m.

COMPUTER HOLIDAY SCHEDULE SET

The William and Mary Computer Center will observe the following schedule of operation during the coming Christmas break.

Close at midnight: Dec. 23

Closed: Dec. 24-25, Jan. 1

9 a.m.-4 p.m.: Dec. 26-27, 29-31, Jan. 2-3

2-8 p.m.: Dec. 28, Jan. 4

Resume normal operating schedule at 9 a.m., Jan. 5

On the days the Center is open, the terminal labs in Chancellors 103-105 and Jones 113 and 203 will be open. The other labs will be closed Dec. 23-Jan. 4.

The LaserJet printers in Morton and Jones will be unavailable during the holiday period listed above.

Student consultants will not work on a fixed schedule between the beginning of exams and the resumption of classes in January. During this time, laser printers will be accessible only when personnel are available. During that time the on-line scheduler will not allow scheduling; individual arrangements for use of the laser printers must be made at the site of the laser printer.