

William and Mary

NEWS

A WEEKLY NEWSPAPER PUBLISHED FOR AND ABOUT THE FACULTY, STUDENTS AND STAFF OF THE COLLEGE OF WILLIAM AND MARY

Volume XVIII, Number 12 13

Wednesday, November 16, 1988

New labs enhance computer capability

Under the direction of Franklin E. "Bud" Robeson, vice provost for computing and telecommunications, the College is developing computing facilities that are not only state of the art, but attractive places in which to work.

One of the prime reasons for the high standard of computing on campus is the \$350,000 the College received from the Higher Education Equipment Trust Fund which helped fund new machines and facilities. Each station including computer, software costs on the average, \$3,500.

Not only is public access computing on campus increasing constantly, but the detail given to the creation of attractive work areas is another plus for computing here. Specially designed and custom built units for the new computer lab on the main floor of Swem Library make it a pleasant place to work. Brightly colored modern paintings on the wall add another personalized touch which indicate that those who provide computing

access on campus are thinking about the human side of the work as well as the precise requirements of the machines.

The College supports computing by the entire

College community — students, faculty, and administration. Most academic computing that is related to specific courses, and much personal

Continued on page 2.



Provost Melvyn Schiavelli (l), with the help of Franklin E. "Bud" Robeson, acting vice provost for computing and telecommunications cut the ribbon formally opening a new computer facility in Swem Library. Looking on are John D. Haskell, associate university librarian, and staff of the library and Computer Center.

New course in Public Policy Program

OMB's Modlin to team-teach with Evans

This spring, students will have the opportunity to examine the federal budget process from an insider's perspective. As part of the Public Policy Program's continuing efforts to bring high level policymakers to the College, Carey P. Modlin, assistant director of the Office of Management and Budget, 1981-87, will teach a new course about budgetary politics with Larry Evans of the government department. Evans is an expert on the U.S. Congress.

As assistant director for budget review in the Office of Management and Budget during most of the Reagan Administration, Modlin was senior civil servant in the OMB. He acted as the general manager of the budget process for the federal executive branch and was responsible for the planning, preparation, production and execution of President Reagan's budgets.

During his tenure at OMB, Modlin worked closely with Budget Directors David Stockman and James Miller III.

Although the twists and turns of federal budgets can be arcane, Modlin emphasizes that he wants to expose William and Mary students to the politics of budgeting: "The point I most want the students

to remember is that we live in a political process, and the budget can only be understood as part of that process."

Modlin is a graduate of the College. After earning a master's degree in economics from Princeton University, he began his career as a staff member at the Bureau of Budget in 1950, giving him experience with the budget dating back to the Truman Administration.

In addition to holding many top policymaking positions at OMB, he served as a senior staff economist on the President's Council of Economic Advisers from 1966 to 1968.

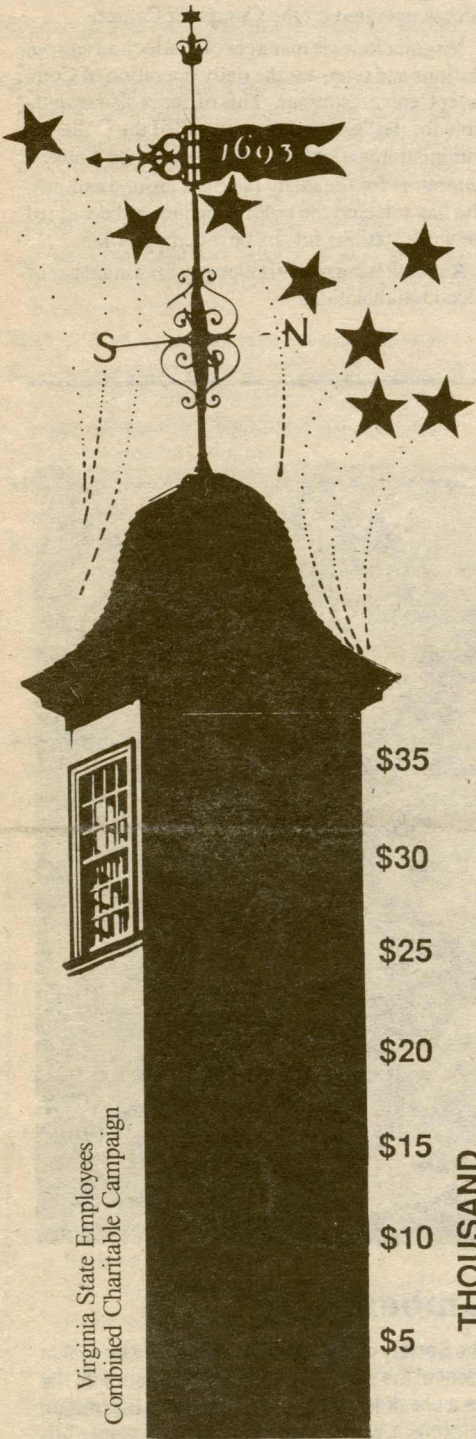
While teaching at William and Mary this spring, Modlin will also be serving as a consultant to the National Economic Commission, which the Reagan Administration has set up to develop proposals for dealing with the deficit.

The central theme of the course will be the political foundations of our current problems with the deficit. Students will examine the early budget battles of the Reagan Administration, the role of David Stockman, the response of Democrats in Congress and the events leading up to the Gramm-Rudman-Hollings budget balancing act.

But Modlin emphasizes that the current deficit can only be understood from a historical perspective. As a result, a portion of the course will focus on how current budgetary procedures evolved, emphasizing the give and take of important political actors in Congress and the executive branch.

According to Evans, Modlin's input will be particularly valuable for explaining how the process developed. "Peter Modlin has a unique perspective to offer. Perhaps no one in the country can match the length and breadth of his experience with the budget, and these days, the budget deficit is our most salient domestic policy issue."

David Finifter, director of the Public Policy Program, noted the value of bringing policymakers to William and Mary to co-teach courses with members of our faculty. "The combination of theory and practice involved in this course will provide students with a unique learning experience. It also provides an interesting opportunity for faculty members who are able to participate in such joint projects. We are delighted with the addition of Mr. Modlin to our public policy faculty and will be seeking similar opportunities with other members of the policy community," said Finifter.



College campaign goes over the top

The State Employees Combined Charitable Campaign on campus has reached its goal.

Donations are still coming in, but the drive has reached \$35,310.60, topping the goal of \$35,000.

Final figures are not in, but as of Tuesday, the percentage of giving on campus was 12-13 percent higher than last year. The level of staff giving, which was handled this year by the Hourly and Classified Employees Association, doubled.

The wide range of causes selected by donors indicates that the wider range of options under the new campaign was appreciated.

Great American Smokeout
See page 4

Faculty Club Party
See page 3

Editor of Virginia Quarterly Review
to lecture Dec. 1
See Calendar, page 3

Special station equipped for visually handicapped students

Continued from page 1

computing by students is carried out on a centralized network of three super-mini computers made by PRIME. Access to these is provided by some 200 terminals in more than 10 public access terminal labs, connected through a Gandalf data switch. All students have accounts, identification codes and passwords set up in advance. Most administrative computing, as well as research that requires extensive calculation, is done on a NAS 6660 computer running the IBM operating system MVS/SP.

A growing trend is the use of microcomputers (PCs) for both personal and course-related computing; indeed, many individuals bring their own personal computers to campus. About 30 percent of freshmen this year brought their own computers with them.

The PRIME computers form the basis for most academic computing on campus. Students taking certain business, computer science, or research-oriented courses may be required to use the computer on a regular basis. Many others "log-in" to use one of the mail systems or to participate in one of the bulletin board conferences in the "PARTT" system. A number of students use the word processing capability of the PRIME computer system in lieu of a typewriter for papers or correspondence.

The 17-workstation public microcomputer facility in Morton contained IBM PC/AT compatible microcomputers, with high resolution (EGA compatible) graphics adapters and monitors, one high density and one double density floppy diskette drive, as well as a hard disk.

Fifteen stations feature Hewlett Packard Quietjet printers. Two standup stations share a Quietjet Plus. The standup stations also have lines to the Gandalf data switch so that users may transfer files between the microcomputers and the mainframe systems, as well as auxiliary 3.5" floppy disk drives so that material may be transferred between diskette formats.

During this past summer 114 new public access microcomputers were added on campus bringing in the total of public access micros to 164.

Work was begun in early June on the renovation and furnishings. In several cases, classrooms were converted in order to house these new machines. The specifications for the individual work stations were drawn up and put out to competitive bid. The contract was awarded to a cabinet maker in Gloucester. These stations were delivered in early August in time for the arrival of the machines late that month.

The systems consist of WIN TurboAT microcomputers. They are IBM-compatible machines operating at 10 Mhz. under MicroSoft DOS 3.3. Each system has 1 Mb. of memory, a hard disk, one 5.25-inch, 360K floppy drive and one 3.5 inch, 1.44 Mb. floppy drive. The hard disk is partitioned as two local drives, drive C (for Computer Center protected software) and drive D (available for public use). All monitors are graphics capable — EGA in some labs and VGA in others.

In addition to DOS 3.3, each system has GW-BASIC, WordPerfect 5.0 and Public Domain Utilities installed. Additional software is available in each lab, the particular configuration selected to match the needs of the users in each location.

This equipment is protected by a fiber optic security system. Each piece of equipment has a fiber optic loop running through it; any break in this loop triggers a transmitter to contact the campus

police with the exact location of the break. At the same time, a local alarm sounds in the room where the break has occurred. This system is state-of-the-art technology for protecting equipment in public access areas.

An overhead color projector has been installed in the new teaching lab located in Jones 103. This makes it possible for the instructor's monitor to be projected onto a screen viewable by the entire class. Individual one-watt lamps have been installed at each of the work stations so that notes may be taken during lectures without the use of overhead lighting, which denigrates the projected image.

Each lab is equipped with several high-speed printers, and by the use of print directors up to five microcomputers are able to share one printer.

The new labs are located and configured as follows:

Swem Library 125

This lab contains 31 microcomputers and eight HP Rugged Writer printers. It operates on the same schedule as the Library and is not available for scheduling; it is always available as a public access facility. A consultant is usually stationed in this lab. These machines also have the software package MySTAT installed.

Jones 103

This lab is configured with 21 microcomputers and four HP Rugged Writer printers and is scheduled for classroom teaching through the math and computer science departments. When it is not being used for this purpose it is open as a public access facility. These machines also have MSTAT, Turbo Pascal 4.0 and PCLink installed. Procomm is also available at the consultant's station.

Tyler 104-105

This complex is configured with 40 microcomputers and 16 printers, the microcomputers are all connected to the Gandalf switch for access to the College mainframe computers allowing for uploading and downloading. The 10 machines in Tyler 104 are each connected to an HP QuietJet printer. The 30 machines in Tyler 105 share six HP Rugged Writer printers. This facility can be scheduled for classroom use — Tyler 105 from 8 a.m.-9:30 a.m., Monday-Friday; Tyler 104 on a per call basis with 2-day notice. These machines also have MySTAT, Quattro, Procomm, PCLink and Economics Tutor installed.

Millington 121

This lab is configured with 10 microcomputers and two HP Rugged Writer printers and can be scheduled from noon until 6 p.m., Monday-Friday, by consulting the psychology department. The machines in this lab are IRC 286 microcomputers that are configured somewhat differently than the others. They have one 5.25 inch, 1.2 Mb. floppy drive and one 5.25 inch 360K floppy drive. These machines also have MySTAT, Procomm and PCLink installed.

Educational Media

The lab in Educational Media, which was equipped with Apple computers, has been reconfigured. The Apples were moved to the School of Education and a new teaching lab was created in Jones 202-B. This lab is primarily for use by the School of Education.

Four Apple Macintosh SEs have been placed in the Educational Media lab along with an Apple LaserWriter. Eight of the WIN microcomputers have also been installed, five of which are con-

nected to one HP Rugged Writer, two are connected to two HP Laserjet printers and one is connected to a HP PaintJet printer. There is also one station equipped with an IRC computer and a Braille printer for use by visually handicapped students. The WINs in this lab also have MySTAT installed. Additional software is available for checkout in this location. This facility offers excellent desktop publishing capabilities.

Morton 240

The configuration of the lab in Morton 240 matches that in Millington 121 with the exception of the printers. Each machine in this lab is connected directly to an HP Quiet Jet printer rather than the print sharing configuration. These machines also have MySTAT, WordMarc, Lotus 123-Student Version, PCLink, Procomm and Economics Tutor installed. Two standup stations in this lab are connected to the mainframes, allowing users to upload and download data.

The computing program at the College contains a variety of assistance for users. Printed information (mainly PRIME manuals) is available in most terminal labs. A document written by members of the computer science department, "The William and Mary PRIME Users Guide," is available at a reasonable price in the College Bookstore. Several of the PRIME manuals are also sold there. Consultants provide personal assistance in several of the labs. Also the Computer Center schedules several introductory short courses on various aspects of computer use dur-

ing the year. All those associated with the College are invited to attend.

Future plans include networking the machines in Swem 125 and also providing access to the Gandalf from that location as well as Educational Media so data may be moved between the micros and the mainframes from these locations.

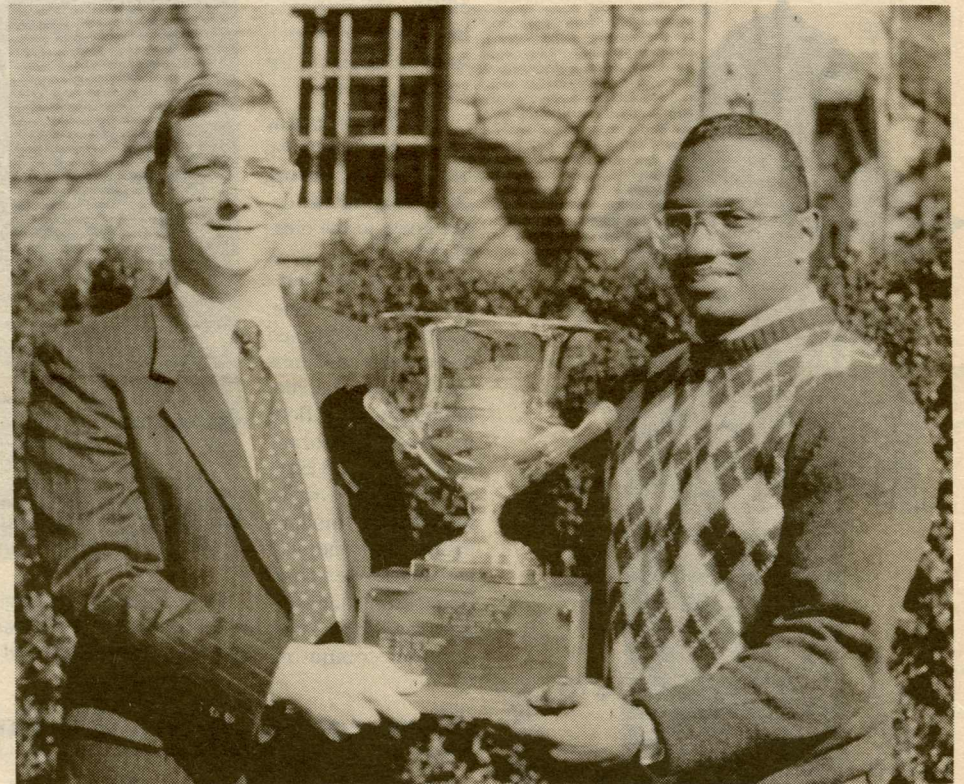
Administrative support for the computing program on campus is headquartered in the Office of the Vice Provost for Computing and Telecommunications and includes the offices of User Support, Systems Support, Production and Operations, and Telecommunications.

David Reed is manager of the User Support Office, which provides applications and consulting services to administrative and academic computer users.

Dan Ewart manages the Systems Support group, which is responsible for the systems engineering and maintenance of the mainframe and micros operated by the Computer Center.

Virginia Jones is manager of production and operations and oversees the daily operation of Computer Center resources. This office is also responsible for the "production control" of the College's administrative systems. Jones is also the "interior decorator" for the many facilities around campus. She has selected the color schemes and designed the work stations for the new computer labs.

A search is currently underway for a manager of telecommunications.



BSO receives Lambert Cup

Ben Kellam (left), director of records and research for the Society of the Alumni and coordinator of this year's Homecoming Parade, presents Keith Jasper, president of the Black Student Organization, with the Lambert Cup for first prize in the parade. BSO will receive a check for \$350, in addition to an inscription on the trophy, which resides at the Alumni House. Other winners were Psi Upsilon, second place; Off-Campus Student Council, third place; Delta Delta Delta/Lambda Chi Alpha, fourth place; and Delta Gamma, fifth place. Winning bands were Menchville High School of Newport News, first place; Plaza Junior High School of Virginia Beach, second place; and James Blair Intermediate of Williamsburg, third place. More than 40 organizations participated in this year's parade, held Nov. 5.

Notes

Memorial service

All members of the College community are invited to attend a service in memory of Professor Luther Thomas Conner, Jr., who died Friday, Nov. 4 at his home in Williamsburg. Professor Conner was a member of the faculty for over 24 years. The service will be held at 5 p.m., Thursday, Nov. 17 in Rogers 100.

Choir concert tickets

Tickets for the Choir Christmas concert are currently on sale at the Campus Center Desk. General admission is \$2.50. The concert will be held at 8:15 p.m. on the evenings of Thursday, Saturday and Sunday, Dec. 1, 2 and 4.

Christmas Story Time

Undergraduates, graduates, faculty and staff are invited to sign up to read for Christmas Story Time, a program for primary school children in the

community, to be held Dec. 12-15. Readings are scheduled for 9:30 and 11 a.m. and 1:30 p.m. each day. Books will be provided, but if readers have a favorite of their own, they are welcome to bring it along or ask that it be provided. For more information, call Jane-Ellen Jones, ext. 4600.

Book sale

The Friends of the Library of the College of William and Mary will hold a book sale Saturday, Nov. 19, 9 a.m.-4 p.m., and Sunday, Nov. 20, 2-5 p.m. in the Botetourt Gallery of Swem Library. The sale will be open to members of the Friends only on Saturday morning from 9 to 11 a.m. New members may join at the door.

Turkey Trot

The recreational sports department will sponsor a 5K trot through the woods at 3:30 p.m., Thursday, Nov. 17.

Entry fee will be some type of dry or canned food to be given to the needy in the area. Turkeys will be given to the winner of each category: open, student, faculty, staff, and prediction. Two additional turkeys will be raffled off among all finishers.

To sign up and receive more information, visit the recreation department in Blow Gym, room 4.

Prehistory symposium

The Council of Virginia Archaeologists will hold a Paleo-Indian Symposium on campus Saturday, Nov. 19 beginning at 8:30 a.m. in Washington 100.

Ars Antique de Paris

The Ars Antique de Paris, an ensemble that uses a variety of antique instruments, will present a program that spans six centuries of European music at 2 p.m. on Nov. 20 at the Williamsburg

Regional Public Library Theater. This concert is sponsored by the modern language and music departments. There is no admission.

Review seeks material

One of the nation's leading college literary magazines is right here on campus, and you can be a part of it. Submit fiction, art or poetry to the *William and Mary Review* in Trinkle Hall.

Careers in journalism

Kay Tucher McGraw '70 will speak on "Careers in Journalism" at 4 p.m., Thursday, Nov. 17 in Morton 141. McGraw is deputy managing editor of *The Virginian-Pilot* and *The Ledger Star* newspapers. Those interested are encouraged to attend, ask questions and gain information regarding a career in journalism. For more information, please call Career Services, Morton 140, ext. 4604, or contact Karen Barnes, student coordinator for the career speaker series.

Calendar: Events on Campus

Wednesday, Nov. 16

"Jesus through Many Eyes": "Jesus through the Eyes of Judaism" by Alan L. Berger, CC rooms A&B, noon

Film: "Art of the Sixties," Muscarelle Museum, 4 p.m.

Physics Colloquium: "An Asatze Approach to QCD: Connecting the Confining and Asymptotically Free Regimes" by Anthony Williams, University of Washington, Small Hall 109, 4 p.m. (Coffee, conference room S-123, 3:30 p.m.)

Honors Program Film Series: "Being There" (U.S., 1979), directed by Hal Ashby, Wmsbg. Library Arts Center, 4 and 7:30 p.m.

Central America Information Week Program, Spanish House, 8 p.m.

Thursday, Nov. 17

Muscarelle Museum Members' Trip to Washington, D.C.

Central America Information Week: Latin American Literature of the Colonial and Independence Periods, 11 a.m.; **Lecture: Speaker, Phillip Berryman,** American Friends Service Committee, Rogers 100, 8:15 p.m.

***Town and Gown Luncheon:** "Election 1988: What Happened and Why?" John J. McGlenon, associate professor of government, CC ballroom, 12:15 p.m.

Turkey Trot, Lake Matoaka Woods, 3:30 p.m.

Career Speakers Series: "Careers in Journalism" by Kay Tucher McGraw '70, deputy-managing editor, *The Virginian-Pilot* and *Ledger-Star*, Morton 141, 4 p.m.

Memorial Service for Professor Luther Thomas Conner Jr., Rogers 100, 5 p.m.

Eminent Scholars Lecture Series: "Secondary Students' Understanding of NATO and the Warsaw Pact: The Educational Implications of Research Conducted in Three NATO Nations" by Armand J. Galfo, Heritage Professor of Education, Dodge Room, PBK, 7 p.m. Reception will follow.

Second Season: "Theatre 460 Presents ...," original plays, PBK studio theatre, 8:15 p.m.

Friday, Nov. 18

Supreme Court Preview: What to Expect from the 1988-1989 Term, Marshall-Wythe — "Civil Rights and Civil Liberties," 9:30-11:45 a.m. **Luncheon:** "The Role of the Press as Interpreter of Supreme Court Decisions," noon. "Criminal Procedure, Separation of Powers, and Economic Issues," 2 - 4:45 p.m. **Reception,** 5-6 p.m. Co-sponsored by the Institute of Bill of Rights Law and the National Conference of Editorial Writers.

Physics Colloquium: "NMR Studies of Hydrogen in Metals and Metal Hydrides at Very High Temperatures" by R. G. Barnes, National Science Foundation, Small Hall 109, 4 p.m. (Coffee, conference room, 3:30 p.m.)

Psychology Colloquium: "TV Violence: The Science and the Politics" by Cynthia H. Null, associate professor of psychology, Millington 211, 4 p.m. (Refreshments at 3:30 p.m., Millington 232)

Faculty Club Party, Andrews Hall foyer, 5:30 p.m.

SA Film Series, Trinkle Hall: "The Running Man," 7 p.m.; "Funny Farm," 9:15 p.m.

Second Season: "Theatre 460 Presents ...," original plays, PBK studio theatre, 8:15 p.m.

Saturday, Nov. 19

Book Sale, Botetout Gallery, Swem Library, 9 a.m.-4 p.m.

Supreme Court Preview: What to Expect from the 1988-1989 Term, Marshall-Wythe — "The Court's Future Direction," 9:30 a.m.-noon. Co-sponsored by the Institute of Bill of Rights Law at the College of William and Mary and the National Conference of Editorial Writers.

Wren Chapel organ recital, 11 a.m.

***W&M Film Society,** "The Misfits," Millington Aud., 7 p.m.

Second Season: "Theatre 460 Presents ...," original plays, PBK studio theatre, 8:15 p.m.

Sunday, Nov. 20

Book Sale, Botetout Gallery, Swem Library, 2-5 p.m.

Concert: Ars Antique de Paris, Wmsbg. Library Arts Center, 2 p.m. Sponsored by modern language and music departments

Music at the Muscarelle, 3 p.m.

Second Season: "Theatre 460 Presents ...,"

original plays, PBK studio theatre, 8:15 p.m.

Monday, Nov. 21

ROTC Fall Awards Ceremony, Trinkle Hall, 3 p.m.

Wednesday, Nov. 23

Thanksgiving Break (begins 1 p.m.)

Thursday, Nov. 24

Thanksgiving Day

Saturday, Nov. 26

Wren Chapel organ recital, 11 a.m.

***Basketball v. Hampden-Sydney,** W&M Hall, 7:30 p.m.

Monday, Nov. 28

Classes resume

French Film Festival: "L'Une chante, l'autre pa," Botetout Theatre, Swem Library, 2 and 8 p.m.

Tuesday, Nov. 29

CEBAF Lecture: "Trends in Data Acquisition Instrumentation: 25 Years of Commercial Perspective" by George J. Blamar, LeCroy Corp., CEBAF 55, 2:30 p.m.

***Basketball v. ODU,** W&M Hall, 7:30 p.m.

Wednesday, Nov. 30

"Jesus through Many Eyes": "Jesus through the Eyes of Islam" by John A. Williams, CC rooms A&B, noon

***W&M Theatre:** "A Christmas Carol," PBK, 8:15 p.m.

TAVENER Film Series — II. Serious: "A Hard Look at the Criminal Reform System," Botetout Theatre, Swem Library, 8:30 p.m.

Thursday, Dec. 1

***Town and Gown Luncheon,** CC ballroom, 12:15 p.m.

Lecture: "The Literary Marketplace in the Little Magazines Today" by Staige Blackford, editor, *The Virginia Quarterly Review*, Sit-'n'-Bull room, 4 p.m. Sponsored by American studies and the lectures committee

SA Film Series, Trinkle Hall: "The Living Daylights," 7 p.m.; "It's a Wonderful Life," 9:15 p.m.

***Concert:** W&M Choir and Chorus, PBK, 8:15 p.m. \$2.50

Friday, Dec. 2

***W&M Theatre:** "A Christmas Carol," PBK, 8:15 p.m.

Exhibition Opening: "Eleven Pre-Columbian Cultures of Ecuador," Muscarelle Museum, 5:30-7:30 p.m.

Saturday, Dec. 3

Cut Your Own Christmas Tree: Ash-Lawn Highland, 10 a.m. - 4 p.m. Donation requested

Wren Chapel organ recital, 11 a.m.

***W&M Film Society,** "Guess Who's Coming to Dinner?," Millington Aud., 7 p.m.

***Concert:** W&M Choir and Chorus, PBK, 8:15 p.m. \$2.50

Second Season: Directors' Workshop, professional plays, PBK studio theatre, 8:15 p.m.

Sunday, Dec. 4

Cut Your Own Christmas Tree: Ash-Lawn Highland, 10 a.m. - 4 p.m. Donation requested

Music at the Muscarelle, 3 p.m.

Hannukah

***W&M Theatre:** "A Christmas Carol," PBK, 2 p.m.

***Concert:** W&M Choir and Chorus, PBK, 8:15 p.m. \$2.50

Exhibits

Muscarelle Museum: "Collector's Choice" (Through Nov. 27)

"Folk Paintings" by Lee Brooks and Rosa Brooks Beason (Through Dec. 4)

Andrews Gallery: "Sculptures" by Anthony Paterson (Nov. 7 Through Dec. 15)

Andrews Foyer: "Prints" (Through Dec. 15)

Zollinger Museum, Swem Library: "'This Glorious Struggle': Virginia during the American Revolution" (Through Nov. 28)

The William and Mary NEWS

The William and Mary News is issued weekly during the school year for faculty, staff and students of the College and distributed on campus Wednesday afternoons.

News items and advertisements should be delivered to the News Office, James Blair 310A, no later than 5 p.m. the Friday before publication. Notices for the calendar should be delivered to the News Office no later than 5 p.m. the Wednesday before publication.

Barbara Ball, editor

Mary Ann Williamson, desktop publishing

Publications Office, production

News deadline: Fridays, 5 p.m.

Faculty Club plans third party

The Faculty Club will hold its third party in Andrews Hall foyer at 5:30 p.m., Friday. Members are invited to share the collegiality of the occasion amid the abstract bronze sculptures of Anthony Patterson.

The Faculty Club is open to all members of the faculty and administration of the College, and emeritus professors are accorded free membership.

The Club plans to hold three more parties during the current academic year: Jan. 20, Feb. 24,

and April 20. Membership is \$15. Fees will be accepted at the party Friday and those who join will be admitted free.

A fee of \$4 will be assessed for a spouse or guest; \$10 for each additional guest.

Members will be charged \$4 per person for the party, while non-members will be charged \$10. Non-drinking, non-members will be charged \$7; non-drinking members, \$4.

For membership details, contact John M. Charles, secretary at ext. 4577.

Events in Williamsburg

This column is devoted to events in Williamsburg that would be of interest to members of the College community. We will accept entries, on a space available basis, of concerts, lectures, exhibits and other events open to the general public. Items must be submitted in writing to the William & Mary News office, 310 James Blair Hall, and must include the name and phone number of the contributor. Deadline for entries is Thursday at 5 p.m. for the following Wednesday edition.

On-going

Overeaters Anonymous meets Monday and Friday, noon-1 p.m., St. Bede's Catholic Church

7th Annual Festival of Lights: Multi-colored lights (\$5 to \$50) may be purchased in honor of or in memory of someone special. Acknowledgements will be sent if requested. Call Mary Nell or Bob Morris at 229-1576. Donations will be accepted throughout the holiday season. Sponsored by the Williamsburg Community Hospital Auxiliary

Wednesday, Nov. 16

Colonial Williamsburg curator John C. Austin will compare 18th- and 20th-century table settings in a lecture, Craft House dining room, 10:30 a.m. (Repeats Nov. 23)

Chambrel at Williamsburg: A fashion show of furs from Jindo and evening attire from Tiffa-

nys, Gathering Hall, 7:30 p.m. Call 220-1839 for reservations.

Thursday, Nov. 17

30th Annual Armistice Day Meeting and Dedication of "America and War" Gallery, War Memorial Museum, 8 p.m. A program honoring POWs and MIAs, featuring Upton J. Bovin, department chairman of the American Legion. Refreshments will be served. Call Corliss Tacosca, 247-8523, or Sam Margolin 873-0376.

Sunday, Nov. 20

Chambrel at Williamsburg: **The Classic Wind Society,** 4 p.m. This concert is made possible through a grant from the Williamsburg Arts Commission. Call 220-1839 for reservations.

Tuesday, Nov. 22

Colonial National Historical Park workshop: **"Methods of Storing Historical Clothing,"** Yorktown Visitor Center Conference Room, 10 a.m. Registration by Nov. 18 required. Call 898-3400, ext. 30, for more information.

Sunday, Nov. 27

Chambrel at Williamsburg: **An Advent Celebration Play,** presented by the Covenant Players of Richmond, 3 p.m. Call 220-1839 for reservations.

Monday, Nov. 28

"The Birth Story of Jesus: A Middle Eastern Perspective" by Dr. Kenneth E. Baily, Th.D., social hall, Williamsburg Presbyterian Church, 7 p.m.

Tuesday, Nov. 29

Chamber Music Series: **The Arden Piano Trio,** 8 p.m., Wmsbg. Library Arts Center. Tickets: \$7, general admission; \$3.50, students.

Saturday, Dec. 3

Festival of Lights: tree lighting ceremony at Williamsburg Community Hospital at 5:30 p.m. Refreshments and music will follow the ceremony in the hospital lobby. Public is invited.

Folk singer Fred Small, Wmsbg. Library Arts Center, 8 p.m. Tickets, \$6 at library reception desk or at the door the night of concert.

Sunday, Dec. 4

Grand Illumination, Colonial Williamsburg

Special Christmas exhibition at the Abby Aldrich Rockefeller Folk Art Center

Williamsburg Women's Chorus Preview Concert, Walnut Hills Baptist Church, 7:30 p.m. A free-will offering will be taken. For more information, call 229-8934 or 229-0286.

Friday, December 9

Williamsburg Women's Chorus Christmas Concert, "Christmas Music from around the World," Bruton Parish Church, 8 p.m. A free-will offering will be taken. For more information, call 229-8934 or 229-0286. (Repeat performance, Dec. 10.)

Saturday, December 10

Chambrel at Williamsburg: **Second Annual Gingerbread House Show and Competition,** noon-4 p.m. (Also Dec. 11.) Call 220-1839 for reservations.

Tuesday, Jan. 17

Chamber Music Series: **The Los Angeles Piano Quartet,** 8 p.m., Wmsbg. Library Arts Center. Tickets: \$7, general admission; \$3.50, students.

Tuesday, Feb. 14

Chamber Music Series: **The Colorado String Quartet,** 8 p.m., Wmsbg. Library Arts Center. Tickets: \$7, general admission; \$3.50, students.

Tuesday, March 28

Chamber Music Series: **The Audubon String Quartet,** 8 p.m., Wmsbg. Library Arts Center. Tickets: \$7, general admission; \$3.50, students.

1988 Great American Smokeout

The Great American Smokeout is held each year on the Thursday before Thanksgiving. The event, now 11 years old, is sponsored by the American Cancer Society and supported by thousands of other organizations, businesses, schools and hospitals, in addition to millions of individuals, nationwide.

The Smokeout is an upbeat effort to encourage smokers to give up cigarettes for 24 hours. It focuses supportive attention on cigarette smokers from coast to coast, helping them quit for a day. The goal of the 1988 Great American Smokeout is to get at least one in every five smokers to give up the habit from midnight to midnight on Thursday.

Smokers are asked to throw out all cigarettes; clean out all ashtrays in the home, office or car; and discard matches and hide lighters. On campus, CommonHealth suggests trading cigarettes for a Survival Kit, available from 8 a.m. to 1 p.m. tomorrow in Adair 103.

The American Cancer Society has an "Adopt a Smoker" program for Smokeout Day. A non-smoker adopts a smoker and tries, by gentle persuasion, to keep him or her from smoking.

"Adoption Papers" represent an agreement between adopter and smoker that each will try to live up to his or her half of the bargain.

The ACS suggests taking the adoptee out to breakfast, lunch or dinner; being available to give encouragement; and, after the 17th, sending flowers for a post-Smokeout celebration, and urging the adoptee to stay off cigarettes now that he or she has made it for a day.

Medical screening

It is not too late to sign up for CommonHealth. The required health risk analysis and medical screening will be held through Nov. 18.

Call Mary Louise Mageean, director, ext. 4577, for a screening appointment.

Fitness classes

Classes in aerobics, lap swimming, stretching and toning are being held through Dec. 22. The walking club, which meets at the Wren Building and walks approximately 2 to 2-1/2 miles around Colonial Williamsburg, begins Nov. 29.

To register for any of the above, please call Mary Louise Mageean at ext. 4577.



Evelina Jimmison, hospital attendant at the Health Center, signs an adopt a Smoker contract to try and quit smoking during the Great American Smokeout. On hand to assist her were Cynthia Burwell, health educator at Student Health Services (l) and CommonHealth director Mary Louise Mageean

Classified Advertisements

Classified ads are included as a service to members of the College community. The fee for ads is \$3 for three consecutive issues. Ads should be no longer than 40 words and must be submitted, in writing and with payment, to the William and Mary News office no later than 5 p.m. on the Friday preceding the first insertion. Corrections must be made before the second insertion. Any change is considered a new ad.

FOR SALE

1983 Nissan Sentra, \$1,500. Runs and looks good. Dependable transportation, 70,000 miles. Call 229-0153 after 6 p.m. and 220-1882 weekends. (12/7)

Standard-size contemporary sofa. Cream background with rose, gold and colonial blue floral imprint. Excellent condition. \$200 or best offer. Call Natasha, 253-4019, days; 887-5059, evenings. (12/7)

Luxurious, thick pile New Zealand merino lambswool underblanket. Never used (wrong size). Fitted style, queen-size (78"x60"). \$99 or near offer.

Call Cathy Elliott, ext. 4311; or leave message at 220-0997. (12/7)

Soloflex with all options. New machine, never used. \$950. Call 220-1819. (11/30)

Two stereo speakers, 4"x2"x2", 15" bass; horn tweeter, super tweeter. Four-way crossover. \$175 or best offer. Call 898-9493, evenings or weekends. (11/30)

1981 Oldsmobile Omega. 2-door, 4-speed transmission, AM/FM cassette, good tires, new front brakes and water pump. \$750 or best offer. Call 253-7872. (11/16)

Moving to desert! Two Aladdin kerosene heaters, like new; 12,300 BTU, \$65; 18,500 BTU, \$80. Double, sleep-sofa with Simmons mattress, like new, \$200. Call 229-3055, evenings or weekends. (11/16)

French exchange student seeks room in private home in Williamsburg for spring semester 1989 in exchange for tutoring or other skilled services. Call 253-4117 after 7 p.m. (11/30)

INSTRUCTION

Piano lessons: Experienced teacher with master's degree from Peabody Conservatory offers piano and music theory lessons for all ages and levels. Reasonable rates — Lafayette Manor location. Call Gayle Pougher, 565-0563, evenings. (11/30)

SERVICES

Typing, housecleaning, housesitting, overnight babysitting, errands and grocery/gift/Christmas shopping. Call 874-3320 today to schedule an appointment before the Christmas rush! (12/7)

FOR RENT

Large, 2-story house, 2 blocks from college. 4-BRs, 3 baths, kitchen, laundry room, dining room, living room, sun parlor, basement, finished attic. Separate two-car garage, quiet neighborhood. Faculty only, references required. Immediate occupancy, \$800 per month. Call for appointment, 10-6 daily, 253-2508. (11/16)

WANTED

Moped, reasonable priced. Call Officer Pedro Jones, ext. 4596 and leave message. (12/7)

Employment

Informational interviews will be held in the Office of Personnel Services each Thursday from 9 a.m. to noon on a first-come, first-served basis. This is an excellent chance to learn more about employment opportunities at the College and VIMS.

The following positions at the College are open to all qualified individuals. Call 229-JOBS for a 24-hour-a-day listing of vacancies, or visit the Office of Personnel Services, Thiemes House, 303 Richmond Road, for information and application forms, Monday-Friday, 8 a.m.-4 p.m. All applicants must submit a completed Commonwealth of Virginia Application form to the Office of Personnel Services.

The College of William and Mary is committed to the principle of equal opportunity in the employment of faculty, administrators and non-academic personnel. This policy was reaffirmed by the Board of Visitors on April 25, 1986. It is the policy of the College not to discriminate against any employee or applicant for employment on the basis of race, sex, color, national origin, religion, age, handicap, disability, veteran's status or political affiliation.

Notice: In accordance with the Immigration Reform and Control Act of 1986, effective immediately, all individuals hired for positions at the College of William and Mary or the Virginia Institute of Marine Science will be required to produce the following: either (1) one document establishing both U.S. employment authorization and identity (such as Alien Registration card with photograph, U.S. passport, certificate of U.S. citizenship, certificate of naturalization or unexpired foreign passport with attached employment authorization); or (2) one document establishing U.S. employment eligibility (such as original Social Security card, birth certificate or unexpired INS employment authorization) and one document establishing identity (such as driver's license or U.S. military card). If the employee cannot produce the required documents within three business days of hire, he/she will be subject to removal.

Deadline for applying for the following positions is 5 p.m., Nov. 18, unless otherwise indicated. Postmarks will not be honored.

PROGRAM SUPPORT TECHNICIAN (Grade 6) — Entry salary \$15,168. #083. Location:

Law School.

MARINE SCIENTIST C (Grade 14) — Entry salary \$30,953. #060. Location: VIMS (Biological and Fisheries Science).

AUDIO-VISUAL EDUCATION SPECIALIST (Grade 11) — Entry salary \$23,688. #119. Location: Education Media.

CASHIER—Office Services Aide (unclassified) — \$5.11 per hour, will work on as-needed basis and hours will vary depending upon Bookstore needs. Occasional Saturday hours required. #119. Location: Bookstore.

SECRETARY—Technical typist (unclassified) — \$6.11 per hour, part time, approximately 20 hours per week. #A111. Location: Mathematics.

SECRETARY (unclassified) — \$6.11 per hour, part time, approximately 15 hours per week. #A123. Location: Student Assessment.

POSTAL AIDE (unclassified) — \$5.11 per hour, part time, approximately 30 hours per week. #A124. Location: Campus Post Office.

POSTAL AIDE (unclassified) — \$5.11 per hour, part time, approximately 30 hours per week. #A125. Location: Campus Post Office.

POSTAL AIDE (unclassified) — \$5.11 per hour, part time, approximately 30 hours per week. Five positions available. These are temporary appointments which begin Dec. 1 and end Jan. 31. #A126. Location: Campus Post Office.

SECRETARY (Grade 4) — Entry salary \$12,699. #N055. Location: Athletics.

LIBRARY ASSISTANT (unclassified) — \$7.97 per hour, part time, approximately 30 hours per week. This is a temporary appointment with funding that will expire June 30, 1990. #A127. Location: Swem Library (Automation and Bibliographic Control).

OFFICE SERVICES ASSISTANT (unclassified) — \$6.11 per hour, part time, approximately 30 hours per week. Some evenings and weekend work may be required. This is a temporary appointment with funding that will expire June 30, 1990. #A128. Location: Swem Library (Automation and Bibliographic Control).

OFFICE SERVICES ASSISTANT (unclassified) — \$6.11 per hour, part time. Approximately 30

hours per week. Some evening and weekend work may be required. This is a temporary appointment with funding that will expire June 30, 1990. #A130. Location: Swem Library (Automation and Bibliographic Control).

OFFICE SERVICES ASSISTANT (unclassified) — \$6.11 per hour, part time, approximately 15 hours per week. Some evening and weekend work may be required. This is a temporary appointment with funding that will expire June 30, 1990. Two positions available. #A131. Location: Swem Library (Automation and Bibliographic Control).

AUDIO VISUAL REPAIR TECHNICIAN (unclassified) — \$10.42 per hour, part time, approximately 24 hours per week. #A132. Location: Educational Media.

AUDIO-VISUAL EDUCATION SPECIALIST

(Grade 11) — Entry salary \$23,688. #119. Location: Educational Media.

LABORATORY SPECIALIST A (Grade 7) — Entry salary \$16,586. #024. Location: VIMS (Eastern Shore Laboratory — Wachapreague, Va.). Deadline: Nov. 28.

MARINE SCIENTIST C (Grade 14) — Entry salary \$30,953. #060. Location: VIMS (Biological and Fisheries Science).

MARINE SCIENTIST B (Grade 12) — Entry salary \$25,903. This is a restricted appointment with funding that is subject to renewal June 30. #192. Location: VIMS (Advisory Services). Deadline: Nov. 28.

SAFETY ENGINEER SENIOR (Grade 13) — Entry salary \$28,310. #047. Location: VIMS (Administration and Finance). Deadline: Nov. 30.

Assistant to the Vice President for Administration and Finance

Applications are now being accepted for the position of Assistant to the Vice President for Administration and Finance at the College. This position reports directly to the Vice President for Administration and Finance and will advise the Vice President and other key university personnel by independently researching special projects, developing position statements and presenting recommendations.

Responsibilities include administrative responsibility for the Campus Police Department. The incumbent will represent the Vice President and the university at various meetings and on committees; will be involved in development and implementation of university-wide policies; prepare special reports; assist in preparation of news releases relating to Administration and Finance; and serve as the university's primary liaison to the Office of the Attorney General.

The successful candidate must possess exceptional organizational skills and have demonstrated experience in conducting extensive research, providing recommendations and preparing concise reports in a comparable setting. Excellent written and verbal skills are required. Supervisory experience and a basic knowledge of spreadsheet software and budget development procedures are desired. Advanced degree or equivalent combination of experience and training is required. A law degree is preferred.

Salary is commensurate with experience. Position available immediately. To apply, send a resumé including education and employment experience, salary history and names of three references to the Office of Personnel Services, College of William and Mary, Williamsburg, VA 23185, Attention: Search Committee — Administration and Finance.

Review of applications will begin on Dec. 16, 1988, and continue until the position is filled. Women and minorities are encouraged to apply.