

Non-profit Organization  
U.S. Postage Paid at Williamsburg, VA  
Permit No. 26

# WILLIAM & MARY

A WEEKLY NEWSPAPER FOR FACULTY, STUDENTS AND STAFF

NEWS

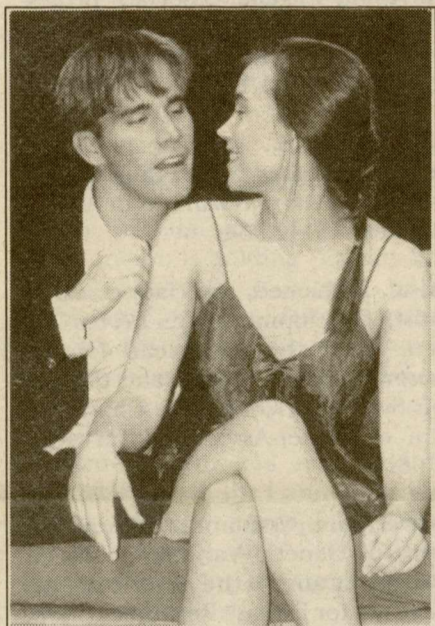
VOLUME XXI, NUMBER 9 • WEDNESDAY, OCTOBER 23, 1991

## Town & Gown Lunch

On Thursday, Oct. 24, David Lowes Watson will speak on "Class Leaders: Recovering a Methodist Tradition," at 12:15 in the Campus Center ballroom.

Jim McCord and Dave Kleppinger will speak on the Historic Rivers Land Conservancy on Oct. 31

Reservations are necessary and may be made by calling ext. 12640 no later than the Monday before the lunch. There is a \$6 fee.



## 'Burn This' Finds New Stage In Lab

Lanford Wilson's drama "Burn This," which was literally burned out of its Studio Theatre last week, will be presented at 8:15 p.m., Friday and Saturday, Oct. 25 and 26, and at 2 p.m., Sunday, Oct. 27, in the Lab Theatre in PBK Hall. There is no admission charge.

Pictured above are two actors from the play, Francis Gercke and Kristianne Kurner. The faculty adviser is Louis E. Catron, professor of theatre and speech.

## REMINDERS

### Time Change



For all those who grumbled about setting the clocks forward in the spring, comes the day of revenge! Daylight Savings Time ends Sunday, Oct. 27. Turn the clocks back one hour before retiring Saturday night.

## Plans Approved For Residential Campus At Richard Bland

### Board Of Visitors Names Presidential Search Committee

By S. Elaine Justice  
Director of Public Information

At a meeting of the College's Board of Visitors Friday, Rector Hays T. Watkins announced the appointment of a search committee that will bring to the Board the names of candidates "well qualified to serve as president of the College." The Rector, reading from a letter distributed to the College community, named Vice Rector James W. Brinkley of Baltimore to serve as chair of the search committee. Watkins also named various constituencies represented on the committee: the faculty, represented by the Faculty Assembly's Executive Committee; the Society of the Alumni, represented by its president; and graduate and undergraduate students. (A list of committee members appears on page 4.)

Speaking after the Board meeting, Brinkley said he had no specific schedule in mind for finding a new president to replace Verkuil, who will step down in February on Charter Day. Watkins said that if a new president has not been named by then, the Board would consider naming an acting president. The Board's next meeting is Feb. 6 and 7, just prior to Charter Day.

In other business, the Board approved operating budget addenda requests for William and Mary totaling \$13,010,495 for fiscal year 1992-93 and \$13,260,425 for 1993-94. The requests, which are submitted each biennium for consideration by the state, include among the top five priorities: an additional \$1.4 million for providing a program of research opportunities for undergraduates; \$3.3 million for faculty and support positions for the Applied Science Program; funding of \$828,800 to replace the FIPSE grant support for the advising-based general education system and to complete funding

of the freshman seminar program; \$1.1 million for integration of marine science education and environmental awareness into the undergraduate curriculum; \$948,000 in operating support for academic programs including a 13 percent increase in department nonpersonal service support, additional funds for computing support, and matching funds for equipment-based grant awards.

Budget addenda requests approved for the Virginia Institute of Marine Science included a total of \$458,100 in educational initiatives and \$2.6 million in research initiatives for the 1992-94 biennium. Top educational requests included \$149,100 for library books and periodicals; \$185,000 to complete local area computer networks; and \$204,000 for library

automation. Top research requests listed were \$363,500 for a three-dimensional model simulating eutrophication of Virginia tributaries; \$407,400 for ecosystem modeling of the York River; and \$250,600 for enhancement of VIMS' wetlands program.

During a meeting of the Committee on University Advancement, the Board learned that the Campaign for the Fourth Century has raised a total of \$107,614,067 in gifts and commitments, or 72 percent of its \$150 million goal. Of that total, \$56,733,755 represents cash already received. Gift income for the current fiscal year, or July 1 through Oct. 3, stands at \$1.4 million, which is 13.3 percent ahead

CONTINUED ON PAGE 4.



### 1991 Alumni Fellows

The Society of the Alumni honored this year's Alumni Fellows at a dinner on Oct. 3 hosted by the Society's board of directors. From left are Henry Hart; Tomoko Hamada; Joe Ellis, who presented the awards as chair of the College relations committee; Lori Korinek; and Christopher Abelt. Not pictured is Susan Donaldson. See story on page 4.

## Fehrenbach Receives Major NEH Grant For International Research Project On Stuart And Tudor Libraries In England

Robert J. Fehrenbach, professor of English, has received a \$130,000 grant from the National Endowment for the Humanities as director of an international research project on personal libraries in Tudor and early Stuart England.

Begun by Fehrenbach in 1986, *Private Libraries in Renaissance England* serves a variety of scholarly fields, most especially intellectual and social history and historical bibliography. As General Editor of *PLRE*, Fehrenbach will be on leave for two years and will return to full-time teaching in 1993-94.

*PLRE* provides in printed and elec-

tronic forms, detailed information about private libraries in England from the mid-15th to the mid-17th century. Book-lists are edited and annotated from manuscripts such as personal catalogs, account books and wills, and especially from the appraised book lists contained in the thousands of inventories of property recorded for probate during this period. The variety of information furnished by *PLRE* for each book entry includes title, author, place and date of publication, language, and cost or appraised value.

David McKitterick, fellow and librarian of Trinity College, Cambridge, and one of the advisers to *PLRE*, has stated

that the project will add significantly to the contributions made by short-title catalogs of early books by adding information on "what was sold, borrowed and read in Britain. ... In this respect, the work begun by *PLRE* offers potential every bit as great as the STCs," promising "results that will advance understanding both of the book trade and of reading. It proffers the essential balance to the STCs for everyone working in this period."

Over 50 contributing editors in the United States, Canada, Great Britain, Belgium and the Netherlands are en-

CONTINUED ON PAGE 7.

NEWS

PAGE 3

STUDENTS PAGE 3

ARTS

PAGE 5

English Club Series Opens Friday With Two Speakers

Students Plan Faculty Recycling Saturday

Music And Dance Featured On Campus Calendar

# NEWSMAKERS

## Departments

### Anthropology

Professor **Mario D. Zamora** delivered lectures in the Philippines and Hong Kong recently. He gave a seminar on "Philippine Anthropology in Perspective" at the Chinese University of Hong Kong's department of anthropology where he was invited to become a member of the Hong Kong Anthropological Society.

He gave a talk at the State University of Tarlac on "Anthropology and Modern Philippine Society," and another at the University of the Philippines' department of anthropology on "Project Creative Revisited: Teaching Techniques in Cultural Anthropology." Zamora also briefed anthropologists from the major universities in the Philippines and Hong Kong on the state of the art in world anthropology, focusing on the 1993 World Anthropology Congress in Mexico.

He was given the 1991 Professional Achievement Award in the Social Sciences (Anthropology) by the University of the Philippines Alumni Association.

### Economics

The Aug. 1991 issue of *The Review of Economics and Statistics* contains an article by Professor **William J. Hausman** and Professor **John L. Neufeld** of the University of North Carolina at Greensboro, titled "Property Rights versus Public Spirit: Ownership and Efficiency of U.S. Electric Utilities Prior to Rate-of-Return Regulation."

Hausman and Neufeld also had a short article titled "Public vs. Private: A Century of Debate over Economic Efficiency" published in the Sept.-Oct. issue of *Public Power*.

### English

**Susan V. Donaldson**, associate professor, was an invited speaker at an international conference on "Rewriting the South: History and Fiction" at the University of Bonn in September. Her paper, "Gender and the Profession of Letters in the South," was presented at the opening ceremony of the conference. In addition, she delivered a lecture on "The Lion Turned Painter: Zora Neale Hurston, Romare Bearden, and the Art of Conjuring" at the English Institute of the University of Lodz in Poland in early October.

Donaldson's latest article, "Recovering Otherness in *The Golden Apples*," appears in the Sept. issue of *American Literature*.

### Psychology

Associate Professors **Joseph Galano** and **John Nezlek** co-authored two chapters in the recently published *Prevention in Community Mental Health Practice*, published by Brookline Books, as part of their School and Community Psychology series. The goal of the volume was to showcase the best prevention and mental health promotion programs in Virginia.

Nezlek authored the chapter titled "A Statewide Evaluation of Human Sexuality Education Programs." Galano's chapter is titled "Evaluating Prevention Programs: Statewide Training for Decision Makers and Preventionists."

The volume begins with a poem, "The Ambulance Down in the Valley," written by Galano and dedicated to the mission of the Virginia Prevention and Promotion Advisory Council. The poem provides a humorous reminder of the mindset that preventionists must work to change and reflects the progress that the field has experienced.

Governor L. Douglas Wilder recently reappointed Galano to a second term on the Virginia Council on Coordinating Prevention. The Council's charge is to

develop a comprehensive statewide plan for the coordination of prevention services across all human services agencies.

In May, Professor Galano was asked to serve on the newly constituted Virginia Council on Teen Pregnancy Prevention by Secretary of Health and Human Resources Howard Cullum. This council was asked to develop specific recommendations by Oct. 1991 regarding policy, funding and administrative actions to reduce the incidence of teen pregnancy in the Commonwealth.

### School of Business Administration

**Robert M. Fulmer**, David Peebles Visiting Professor, and **Jack Goodwin**, associate professor, are co-authors of "Using Management Development to Build a Global Team: The Sterling Drug Case," which appeared in the summer issue of *Executive Development: An International Journal*. They also have co-authored another article, "Management Development at Siemens Electronics: Hitting a Moving Target," which has been accepted for publication in *The Journal of Management Development*.

Professor Goodwin was a featured speaker at the Sept. 23 Strategic Transnational Executive Programme, a consortium of five global companies, in Les Diablerets, Switzerland. Goodwin and Fulmer, along with **Hector H. Guererro**, associate professor, were key faculty members in the Sterling Drug Senior Managerial Seminar in Geneva in May.

### School of Education

**Louis P. Messier**, associate professor, co-presented with Thomas Ward, findings from a study of the prevalence of intellectually gifted and psychologically depressed adolescents in secure detention and learning centers and a comparison of described self and families of delinquent and normal high school-aged peers.

The presentation was made at the first annual conference of the Commonwealth Institute for Child and Family Studies.

Professor **Roger Ries** conducted a seminar on the moral development of gifted adolescents at the first annual conference of the Commonwealth Institute for Child and Family Studies.

### Marshall-Wythe School of Law

Associate Professor **Jayne Barnard's** article, "Institutional Investors in the New Corporate Governance," has just been published in 69 *North Carolina Law Review*: 1135.

"The Civil Rights Hydra," an article by **Neal Devins**, associate professor, has been published in 89 *Michigan Law Review*: 723.

**Paul LeBel**, Cutler Professor, is the author of an article, "Rights-Talk and Torts-Talk: A Commentary on the Road Not Taken in the Intellectual History of Tort Law," which has just been published in 41 *Case Western Reserve Law Review*: 811.

A two-volume treatise, *Court Martial Procedure*, authored by Professor **Fredric I. Lederer**, with Francis Gilligan, has just been published by the Michie Company.

### School of Marine Science

Professor **Robert Huggett** gave a seminar on environmental chemical pollutants for the state of Michigan, Sept. 20, in Roscommon, Mich., before an audience of scientists, state agency personnel and private citizens.

Michigan is in the process of evaluating and prioritizing its environmental problems based on risk. Huggett was one of the authors of a document, "Relative

Risk: Setting Priorities and Strategies for Environmental Protection," which is being used as a guide by Michigan in this effort.

### Reves Center for International Studies

**James A. Bill**, director of the Wendy and Emery Reves Center for International Studies, has recently won two grants in support of his research on "George Ball and U.S. Foreign Policymaking: A Critique from Within the Establishment."

The first award is an Earhart Foundation Grant and the second a Moody Grant from the Lyndon Baines Johnson Foundation.

Bill holds a William and Mary Faculty Research Assignment for the 1991-92 academic year. He has just published a monograph for the Asia Society titled "The New Iran: Relations with its Neighbors and the United States."

## Recent Grants

### Anthropology

**Bragdon-Brown, Kathleen**, visiting assistant professor, "Ethno-Historical Study, Naval Weapons Station, Yorktown," U.S. Department of the Navy, \$24,792.

### Anthropology Center for Archaeological Research

**Blanton, Dennis B.**, co-director/Research and **Donald W. Linebaugh**, co-director/administration, "Phase I Cultural Resource Survey, Proposed Proctors Creek Wastewater Treatment Plant," Chesterfield County, \$5,242.

**Blanton, Dennis B.**, co-director/research and **Donald W. Linebaugh**, co-director/administration, "Phase III Archaeological Investigations at Sites 44PG340 and 44PG341," Gray and Pape Cultural Resources Consultants, Inc., \$181,108.

### Biology

**Phillips, Gregory J.**, assistant professor, "DNA Probe Methodology," Virginia Institute of Marine Science, \$6,287.

### Chemistry

**Kranbuehl, David E.**, professor, "Characterization, FDEMS Sensing, and In-Situ Monitoring of the Processing Properties and Advancement of Cure of Propellants," U.S. Department of the Air Force, \$44,805.

**Starnes, William H., Jr.**, Floyd Dewey Gottwald, Sr. Professor of Chemistry, "Stabilization of Polyvinylchloride," Elf Aquitaine, Inc., \$10,000.

### Mathematics

**Johnson, Charles R.**, professor, "Gems of Exposition in Elementary Linear Algebra," National Science Foundation, \$92,000.

### Physics

**Armagan, Guzin**, research scientist, "Spectroscopy of Solid-State Laser Materials," National Aeronautics and Space Administration, \$19,944.

### Psychology

**Derks, Peter L.**, professor, and **Lynn S. Gillikin**, adjunct professor, "Incongruity, Incongruity Resolution and Mental States: The Measure and Modification of Situational Awareness and Control," National Aeronautics and Space Administration, \$40,000.

### Arts and Sciences

**David J. Lutzer**, dean of arts and sciences, "An Alternative General System Based on Advising and Assessment (FIPSE), U.S. Department of Education, \$113,338.

**Scholnick, Robert J.**, graduate dean of arts and sciences, "Commonwealth Graduate Fellowship Program," State

Council of Higher Education for Virginia, \$20,000.

### Charles Center for Honors and Interdisciplinary Studies

**Schwartz, Joel D.**, director, "Funds for Excellence: Assessment and Renewing the Undergraduate Curriculum," State Council of Higher Education for Virginia, \$66,975.

### Virginia Institute of Marine Science/ School of Marine Science

#### Oyster Disease Awards 1991

Faculty members of the School of Marine Science have received approximately 40 percent of the funding available nationally for oyster disease research from the National Marine Fisheries Service for the last two years. Awards made this year include:

**Barber, Bruce**, assistant professor, and **Roger Mann**, professor, "A Physiological Approach to Understanding of Parasite (*Perkinsus marinus*) and oyster (*Crassostrea spp.*) Interactions: Pathological Effects and Disease Resistance," \$72,281.

**Bureson, Eugene**, associate professor, "Environmental Control of *Perkinsus marinus* and Elucidation of Overwintering Infections," \$71,112.

**Chu, Fu-Lin E.**, associate professor, "Disease Processes and Transmission Dynamics of *Perkinsus marinus* in American Oysters," \$110,934.

**Faisal, Mohamed**, associate research scientist, "Development of an *In vitro* Cell System from the American Oyster *Crassostrea virginica* Tissues and the use of this System in Isolation & Characterization of Oyster-Associated Viruses," \$81,708.

**Graves, John**, assistant professor, "An Analysis of Genetic Variation between and within Strains of the American Oyster Selected for Disease Resistance," \$56,869.

**Perkins, Frank**, professor, "Life Cycle Studies of *Perkinsus marinus* - Host Specificity," \$74,788.

#### National Estuarine Research Reserve System in Virginia

Since designation of the York River component of the Chesapeake Bay National Estuarine Research Reserve in Virginia in June 1991, the Virginia NERRS program under the direction of Carroll Curtis has received the following awards from the National Oceanic and Atmospheric Administration:

"Evaluation of Sites in the Rappahannock and Potomac River Basins for Inclusion in the Chesapeake Bay National Estuarine Research Reserve System in Virginia," \$11,400.

Development of a Mobile Exhibit for the Chesapeake Bay National Estuarine Research Reserve System in Virginia," \$9,839.

"Volunteer Guidebook for the Chesapeake Bay National Estuarine Research Reserve in Virginia," \$10,161.

"Acquisition and Development Award, Chesapeake Bay National Estuarine Research Reserve System in Virginia," \$52,000.

"Monitoring Water Quality and Bird Life at Sites within the Chesapeake Bay National Estuarine Research Reserve System in Virginia: Phase I," \$20,000.

"1991-92 Operations Award/Chesapeake Bay National Estuarine Research Reserve System in Virginia," \$70,000.

## NOTES

### Faculty Club To Hold Party, Nov. 1

The Faculty Club will sponsor a Garden Party in the penthouse greenhouse atop Millington Hall from 5:30 to 7:30 p.m., Friday, Nov. 1. \$5 per person.

### Help Unlimited Fair

Help Unlimited is sponsoring a fair to promote community service and offer volunteer opportunities on campus and in the community from 11 a.m. to 3 p.m., Thursday, Oct. 24, in Trinkle Hall.

College and Williamsburg service groups will be on hand to discuss volunteer opportunities with interested students, faculty and administrators.

For details call Help Unlimited at ext. 13294.

### Delta Gamma Walk-A-Thon

Members of Delta Gamma sorority will hold a 5K walk-a-thon at 2 p.m., Saturday, Nov. 2 to benefit Aid to the Blind. Those interested in participating or sponsoring a participant may call Heather Easterling at ext. 14358 for more information.

This event is sponsored by the National Society to Prevent Blindness.

### Faculty Recycling

The William and Mary Recycling Organization is holding "Faculty Recycling" Saturday.

The invitations on posters around campus note that the organization is not recycling faculty but "harnessing their energies to help save the environment."

Faculty volunteers are asked to meet at 9 a.m. in the Campus Center Lobby and will be assigned to assist at the collection point or assigned to teams who go to residence halls to pick up recyclables.

Faculty who would like to help are asked to call Cathy O'Neill ext. 14623.

### Conservation Speaker, Veggie Dinner

James A. Lee, adjunct professor of science and public policy, will speak on the environmental effects of the Iraq war at 7:30 p.m., Thursday, Oct. 24 in Millington 117.

This program is being sponsored by the Campus Conservation Coalition.

The Coalition is sponsoring a vegetarian dinner at 6:30 p.m., Thursday, Oct. 31 in the Greenhouse in Millington Hall.

This dinner is open to all members of the College community. Participants are asked to bring their favorite vegetarian dish. Beverages will be provided.

### Wren Singers Perform Tomorrow In Chapel

The Christopher Wren Singers will present "An Evening of Music," at 8 p.m., Thursday, Oct. 24 in the Wren Chapel.

There is no admission charge.

## Plans Approved For Residential Campus At Richard Bland

by Kathy Kent  
Public Affairs Coordinator  
Richard Bland College

On Friday, Oct. 18, the Board of Visitors of the College of William and Mary approved campus planning that would develop Richard Bland College from a commuter campus to a residential living-learning center.

The Board endorsed the conclusions and recommendations of two commissioned studies and authorized Dr. Clarence Maze, Jr., president of Richard Bland College, to proceed with planning to implement the recommendations. Two outside consultants conducted the studies to guide planning of the College towards the 21st century: Advanced Resource Technologies, Inc. (ARTI) of Alexandria; and Robert Vickery, F.A.I.A., professor of architecture, University of Virginia.

The ARTI's "Richard Bland College Residential Facility Concept Feasibility Study" and Professor Vickery's "A Campus Planning Study" were funded from a special appropriation resulting from the recommendation by the Governor's Commission on the University of the 21st Century that each college in the Commonwealth plan for growth.

The ARTI study projected a demand of 1,599-2,867 students in 1993 who would desire a residential, junior college experience in Virginia. By the year 2005, the figure would increase to a range of 2,115-3,539. According to the study, the construction of on-campus residential facilities "will very likely result in substantially increased demand for admission by graduates of Virginia secondary schools during the period 1993-2005."

The Vickery Study addresses the implications of this projected growth by providing a guide plan for the physical

expansion of the College. Three stages of growth were assumed: "Stage One, growth to 1,500 students with 300 students living on campus; Stage Two, growth to 2,000 students, with 600 students living on campus; and Stage Three, growth to 3,000 students with 1,500 students living on campus."

For Stage One development (for 1,500 students), the Vickery Study recommended: a new library, a new performing arts center, a new swimming pool, a new academic building and a new living-learning center for 300 students. The study also recommended the renovation and conversion of existing library space and additional parking provided. An academic courtyard or central place would be developed at this stage to create a central focus for the campus. The study recommended keeping the "open park-like quality of the campus" with the adjoining pecan groves, older farm buildings and surrounding forest.

## Writers Open English Club Series Friday In Tucker

Writers Carol Jane Sklenicka and R. M. Ryan will read from their works at a program at 3 p.m., Friday, Oct. 25 in Tucker 216 to open the English Club Speaker Series.

The public and the College community are invited. This program is sponsored by the English department.

Sklenicka, who teaches English at Marquette University, will read from *Your Marine*, a novel in progress. Her publications include *D. H. Lawrence and the Child*, published this year by the University of Missouri Press. With Mark Spilka she co-authored "A Womb of His Own: Lawrence's Passional/Parental View of Childhood," which will be included in *Infants: Representing the Language and Con-*

*sciousness of the Child*, edited by Elizabeth Goodenough, et al.

Sklenicka was awarded the Wisconsin Arts Board First Prize Fellowship for Fiction in 1983. Her work has been included in *Sou'wester*, which awarded her the 1979 prize for fiction; *The Cream City Review*, *The Henry James Review* and *The South Atlantic Quarterly*.

She was an NEH Summer Seminar Fellow at the University of Wisconsin-Milwaukee in 1989 working on "The Question of Postmodernism: Text, Context, Theory."

In 1990 Sklenicka was project director for an NEH-funded program "Howard Nemerov: The Art of Seeing What Is," at the Milwaukee Institute of Art and

Design and the Milwaukee Art Museum.

Ryan, author of *Goldilocks in Later Life* (Louisiana State University Press), has won an Academy of American Poets Prize and a Wisconsin Writer's Award. He has worked as a translator in Germany, an English instructor at Washington University in St. Louis and is now first vice president of a major regional stock brokerage firm. He writes a quarterly investment newsletter that has a circulation of about 150,000 readers. As a writer in the business world, Ryan was featured in *Coda* (now *Poets and Writers*) in an article titled "Poets in the Corporation."

Ryan has just finished a book of poetry, *Daily Matters* and a novel, *The Golden Rules*.

## Student Pugwash Regional Conference To Meet On Campus

Authorities on the environment will join students and faculty members from colleges and universities throughout the Mid-Atlantic states for a Student Pugwash USA regional conference on campus.

Participants will serve as members of working groups, and attend discussion and plenary sessions involving social issues, alternative technology, resources and population control. Werner Fornos, president of the Population Institute, will deliver the keynote address.

This conference represents an attempt by students to examine the current state of human population and to explore methods of handling potential overpopulation problems.

William and Mary students may register before Friday, Oct. 25 by contacting Kristin Loerzel at ext. 14117 or Justine Thompson at 1-800-WOW-PUG. A fee of \$8 covers meals and activities.

Student Pugwash USA is a national non-profit educational organization that encourages students to examine the so-

cial and ethical implications of advancing science and technology

Student Pugwash USA currently has a chapter network which involves more than 30 campuses nationwide. Other programs include biennial international conferences, a New Careers program, and semi-annual PUGWASHington seminars which bring students to Washington to learn about science policy

The William and Mary chapter of Pugwash meets Tuesday evenings at 8 p.m. For details call Loerzel at ext. 14117.

## Latin American Writer To Speak Tomorrow In Washington 201

Angelica Gorodischer, one of the prominent women writers of Latin America, will speak at 7:30 p.m., Thursday, Oct. 24 in Washington 201.

No topic has been announced for her talk but she is expected to speak on women's issues. Her works, which have been translated and published in Belgium, France, Germany and Italy, focus on a variety of topics including mysterious conflicts, women, greed, power and torture.

"I am very much interested in women's problems," Gorodischer told an interviewer, citing discrimination in everything from politics to work. "In Latin America, women's situation is worse than here," she said, adding that she strives to "expose all the problems, their crudity and cruelty" that women face.

Gorodischer is the author of five novels and nine collections of short stories. She is currently Fulbright Scholar-in-Resi-

dence at the University of North Colorado. In 1988 she participated in the International Writing Program in Iowa City on a Fulbright grant at Iowa City.

Her talk here is being sponsored jointly by the Wendy and Emery Reves Center for International Studies, the Women's studies program, the dean of the faculty of arts and sciences and the department of modern languages and literatures.

## McLachlan To Speak At Commonwealth Center Seminar Oct. 24

James S. McLachlan, author of *American Boarding Schools: A Historical Study and Princetonians, 1748-1768: A Biographical Dictionary*, will conduct a seminar on "Translatio Studiorum: The First Intellectual Migration to British North America, 1601-1700," at 5 p.m., Thursday, Oct. 24 in the Friends Room of Swem Library.

This seminar is sponsored by the Commonwealth Center for the Study of American Culture and is offered in cooperation with the Institute of Early American History and Culture.

## Koenig-Nimmo Foreign Service Scholarship

The department of government is accepting applications for the Koenig-Nimmo Foreign Service Scholarship. This award is made each year to a senior from any concentration who hopes to pursue a career in foreign service with a government agency such as the Department of State.

The recipient will be selected on the basis of commitment to foreign service, academic excellence, leadership qualities and interest in promoting international understanding.

This scholarship is the result of two generous contributions by alumnae of the College. In Nov. 1979, Mrs. Anna Belle Koenig-Nimmo '45, made a gift to the College to establish an endowment fund for the award. Ms. Laurie Johnston '74, now a career Foreign Service Officer, contributed an additional sum to the fund in Jan. 1980.

Application forms are available in the government department office, Morton 10.

Deadline for applications is Nov. 15.

The award will be announced before Dec. 15.

## Five Faculty Members Honored As Alumni Fellows

Each year the Society of the Alumni selects as Alumni Fellows faculty members who represent a wide diversity of accomplishments in a variety of academic fields.

This year the awards were presented to five associate professors, Christopher J. Abelt, chemistry; Susan V. Donaldson, and Henry Hart, English; Tomoko Hamada, anthropology; and Lori A. Korinek '80 M.Ed., education.

Abelt received a B.S. degree from the University of Wisconsin, Madison, and a Ph.D. from the University of California at Los Angeles. He joined the faculty of the College in 1986.

Abelt specializes in organic chemistry. The focus of his research is understanding the chemistry of highly reactive species. He has published widely and has received grants from the Petroleum Research Fund, the National Science Foundation, the W.M. Keck Foundation and Research Corporation.

Donaldson specializes in modern Southern literature and painting as well as 20th-century American literature and 19th-century American literature, painting, and culture.

She has published widely in a number of scholarly journals including *Southern Quarterly*, *Southern Literary Journal* and the *Journal of the Short Story in English*.

Her reviews have appeared in the *Journal of Mississippi History*, and *American Literature*. She has been a frequent speaker at many national and regional conferences. Donaldson has received many awards and honors for her scholarship including two Faculty Research grants from the College, an NEH Summer Seminar Stipend and a Faculty Research Associateship from the Commonwealth Center for the Study of American Culture at the College.

Donaldson received her doctorate and master's degrees from Brown University. She received a B.A. in American studies with highest honors from the University of North Carolina at Chapel Hill.

Hamada, chair of East Asian Studies since 1988, is a participant in the expansion of international studies on campus. This summer she was actively engaged in the exchange program with her alma mater, Keio University in Japan.

Hamada received a B.A. degree in American studies from Vassar College, an M.A. in sociology from Keio University and a Ph.D. in anthropology from the University of California at Berkeley.

President of the Virginia Consortium for Asian Studies, she is a contributing editor to the *Society for Anthropology of Work*, *American Anthropological Association*, and a member of the Mentor

Program committee of the National Association for the Practice of Anthropology.

Hamada is principal editor of *Corporate Culture Studies* to be published by the American Association for the Advancement of Science in 1992. She is the author of *American Enterprise in Japan*, published this year.

Hart won this year's faculty award for the advancement of scholarship given annually by Alpha of Virginia Chapter of Phi Beta Kappa.

He is American editor of the international poetry journal *Verses* and will be on leave next year to complete the manuscript of his fourth book, a study of the poet-scholar Robert Lowell.

Hart is also author of *The Poetry of Geoffrey Hill*, *Seamus Heaney, Poet of Contrary Progressions*, and *The Ghost Ship*. A graduate of Dartmouth College, Hart received a D. Phil. from Oxford University in 1983.

Hart received the Twentieth Century Literature annual prize for literary criticism in 1987. He was awarded a spring residency at the Virginia Center for the Humanities in 1989 to finish his book on Seamus Heaney. He was awarded a Summer Research Grant and an NEH Travel to Collections Grant for Robert Lowell research.

Korinek, who joined the faculty as assistant professor of special education in 1985, received her doctorate in education in 1985 from the University of Florida.

For her doctorate Korinek concentrated her studies in special education and the issues faced in educating students who are mildly handicapped, emotionally handicapped and those with learning disabilities. Her M.A. work focused on elementary education for early childhood, preschool and handicapped children.

She was president of the Virginia Council for Children with Behavioral Disorders, 1989-90; secretary/treasurer, 1986-89, and membership chair, 1986-89, Virginia Coalition of Special Educators in Personnel Preparation; and state secretary, 1987-89, Virginia Council for Learning Disabilities.

She has published in many research-oriented journals and has held workshops and in-service programs both in Florida and Virginia. Korinek was co-author of the proposal and co-director of the project "Preparation of Special Educators: Master's Degree Programs for Training Teachers of Seriously Emotionally Disturbed Students," a three-year \$296,695 grant from the U.S. Office of Education.

## Orchestra Plans Tribute to Mozart and Chabrier

The William and Mary Orchestra under the direction of Joel Suben will honor anniversaries of two composers in its concert at 8:15 p.m., Tuesday, Nov. 5, in Phi Beta Kappa Memorial Hall.

General admission tickets are \$3 and may be reserved by calling ext. 11089 or purchased at the box office at PBK Hall one half-hour before the performance. William and Mary students will be admitted free with valid ID cards.

With excerpts from the final scene of the opera, "The Magic Flute," the musicians will honor the 200th anniversary of the death of Mozart, and with excerpts from the opera, "Le Roi Malgre Lui," will note the 150th anniversary of the birth of French composer Emmanuel Chabrier.

For the Mozart work, the orchestra will be joined by the William and Mary Choir, Frank T. Lendrim conducting. Several choir members will sing leading roles. Kerry Deal of Holder, Mass., a junior, will sing the part of the Queen of the Night. The three ladies of the Queen will be sung by Barbara Bell, a freshman, Betsy Torresson, a junior, and Susan Straight, a junior. Tenor James Pennington, a senior, will sing the role of Monostatos. The role of Sarastro will be sung by Christopher Goodbeer.

Although lesser known than Mozart, Chabrier, says Suben, was a seminal figure

dedicated to Kaiser Wilhelm in 1901. The score of this work calls for eight



William and Mary Orchestra with Director Joel Suben.

ure in the 19th century. The orchestra will perform "Danse Slave" and "Fete Polonoise" from his opera "Le Roi Malgre Lui."

The program will also include a rarely performed work of Richard Strauss, "War March, op., 57," which the composer

piccolos. "The result is a fitting tribute to Mars," explains Suben.

The William and Mary Chamber Orchestra, an ensemble from the full orchestra, will also play an orchestral symphony by J. S. Bach's best known son, Carl Philip Emmanuel.

### Performances Nov. 1, 2 In Phi Beta Kappa Memorial Hall

## Danceevent To Showcase Choreography of Dance Faculty, Skills of Orchesis Dancers

The eighth biennial DANCEVENT performances of new choreography by the dance faculty of the College, will be presented at 8:15 p.m., Friday and Saturday, Nov. 1, 2 in Phi Beta Kappa Memorial Hall.

These performances are open to the public without charge.

The program will include three group works performed by members of Orchesis, the College's modern dance company. Lisa Yount, who has joined the faculty this year after receiving her master's degree in dance at The American University, will perform two solos.

The program will open with "Fields of Time," choreographed by Shirley Roby, professor of dance. This is an exploration of rhythms and forms set to the music of Mickey Hart.

The first solo choreographed and performed by Yount will be "At A Loss," which was presented last spring at the Kennedy Center. This work was created in collaboration with Washington musician Bryan McCune who will perform the musical accompaniment. This solo deals with some of the layers of pressures American society puts on women by emphasizing youthfulness, physical attractiveness and the fulfilling role of motherhood.

Yount will also perform "Man Chronicles-Part 1, with music by the

Judds, which is the first in a series of new works. The dance takes a tongue-in-cheek approach to the way many country songs portray relationships between men and women.

An ensemble work for eight women, "Voices Rising," choreographed by Yount will be danced by Orchesis members. The musical accompaniment is "Chichester Psalms" by Leonard Bernstein. This work reflects the highs and lows of human emotions and is dedicated to the death of Yount's friend, David Bradshaw.

The final number on the program is "Parable," a large group work by Carol Sherman. The choreography, explains Sherman, follows a progression which might be experienced by any person or a people, moving from a time of loneliness and isolation toward meaningful contact with others.

"The polarities which face everyone in life—learning or re-learning to play juxtaposed with senseless conflict and mindless militarism for example—provide a structure for the choreography which is accompanied by a score for flute, synthesizer and percussion composed by Frank Becker."

The stage lighting has been designed by Roger Sherman, professor of theatre and speech emeritus. David Dudley, production manager for Phi Beta Kappa



Members of the dance faculty: left to right, Lisa Yount, Carol Sherman, and Shirley Roby.

Memorial Hall, is technical director.

Members of Orchesis are: Tamara Brown, Kristin Callahan, Matthew Gayton, Kathryn Lewis, Mary Munro, Jennifer Bell, Carolyn Gell, Angela Kanow, Jane Kotapish, Rachel Paiva, Christine Pont, Jennifer Sheehan, Kristine Sorensen, Staci Armao, Elizabeth Badavas, Carol Cosby Sandra Hayslette, and Tiffany Towers.

## Board Of Visitors Told Graduate Student Residences Construction On Schedule

CONTINUED FROM PAGE 1.

of this time last year. Gifts for current operations total \$405,283 for the period, or 41.2 percent ahead of last year. The total includes \$206,218 to the William and Mary Annual Fund, which compares to \$151,970 last year, reflecting a 36 percent increase.

The Committee also heard an outline of preliminary plans for celebration of William and Mary's Tercentenary, presented by Anne Pratt, outgoing director of Advancement Programs. Pratt said that the 1993 celebration would be centered on three major events in the academic calendar, Charter Day in February, Commencement in May and Homecoming in October. Pratt was recently named associate director of legislative and external relations for the State Council of Higher Education for Virginia (SCHEV), effective Nov. 1.

Among the events in the planning stages for the celebration, said Pratt, are a multi-media presentation to open a week of activities before Charter Day; a "Tercentenary Dialogue" on higher edu-

cation featuring journalists and scholars; a conference celebrating 75 years of women at William and Mary; a joint conference with Colonial Williamsburg on young Thomas Jefferson, whose 250th birthday is in 1993; a football game with Harvard during Family Weekend in September; and a birthday celebration at Homecoming in October for alumni and the local community.

John Entwisle, president of the Society of the Alumni, gave a report during the University Advancement Committee meeting, the first in a series of regular reports from the organization to the Board. Entwisle outlined three major concerns of the Society: retention of the Alumni Society staff, decentralization of alumni activities and successful completion of an Alumni House expansion project.

The Committee on Academic Affairs heard a report by the Faculty Liaison Committee on a recent statewide survey of faculty by the State Council of Higher Education for Virginia. The survey covered areas such as faculty workload and attitudes toward teaching, research, sala-

ries and budgets. John McGlennon, president of the Faculty Assembly, told the Board that the Assembly has authorized a survey of faculty as a preliminary step in the upcoming self-study that will cover faculty opinion on the academic direction and leadership of the institution. McGlennon added that he hopes the results of the survey can be shared with members of the presidential search committee.

Vice President for Student Affairs Samuel Sadler told the Board's Committee on Student Affairs that construction of the Graduate Student Residences is on schedule for occupation next fall and that planning is under way for marketing the residence to both new and returning students. He also reported on recent changes in the College's alcohol policy, which include extending the ban on kegs to all areas of campus unless special permission is obtained, and creating distinct areas for alcohol consumption at student parties. He also said that the recent grant from the U.S. Department of Education's Foundation for the

Improvement of Post-Secondary Education (FIPSE) "tremendously expands the impact we can have" in increasing educational efforts on alcohol and other substance abuse.

The Board also heard a presentation from representatives of Richard Bland College and approved a plan that would develop the college into a residential campus. (See story on page 3.)

Appointments approved by the Board included a new director of personnel (see related story) and a director of development (see related story). Also appointed were Karen S. Coltrane, director of annual support, who replaces Joan P. Thomas; Mary Gray Edgar, associate director of development, athletics, who replaces Dick Besnier; Brock L. Field, associate director for capital support; Jeffrey Randall Hammond, catalog librarian, Swem Library; Martha M. Ingles, associate director for estate planning; Mary Meade Saunders, associate director of Career Services; and Susan Trask, reference librarian, Marshall-Wythe School of Law.

### Presidential Search Committee

Chairman:	James W. Brinkley, vice rector of the College
Members:	A. Marshall Acuff, Jr., Board of Visitors
	John E. Donaldson, professor of law
	Morton Eckhause, professor of physics
	John S. Entwisle, president, Society of the Alumni
	Laura Flippin, president, Undergraduate Student Association
	Alan E. Fuchs, professor of philosophy
	J. Edward Grimsley, Board of Visitors
	Audrey M. Harris, Board of Visitors
	Janet Hill, Board of Visitors
	Mariann Jelinek, professor of business administration
	Richard C. Kraemer, president, Endowment Association
	John J. McGlennon, professor of government;
	president, Faculty Assembly
	John Ruzbecki, associate professor of marine science
	Shirley Santiago, graduate student
	Rebecca B. Smith, vice president, Society of the Alumni
	John H. Tucker, Jr., Board of Visitors
	James E. Ukrop, Secretary, Board of Visitors
	James M. Yankovich, professor of education
Ex Officio:	Hays T. Watkins, rector of the College
Secretary:	Harriet E. Reid

## Slon Named Director of Development

Dennis Slon, former director of corporate and foundation relations at the University of Virginia, has been named director of development. Slon's appointment was one of several approved Thursday at a meeting of the Board of Visitors.

Slon had been a member of the University of Virginia development staff since 1989. Prior to that he was associate direc-

tor of corporate and foundation relations at Yale University from 1987 to 1989, and a development officer at Harvard University in 1986-87.

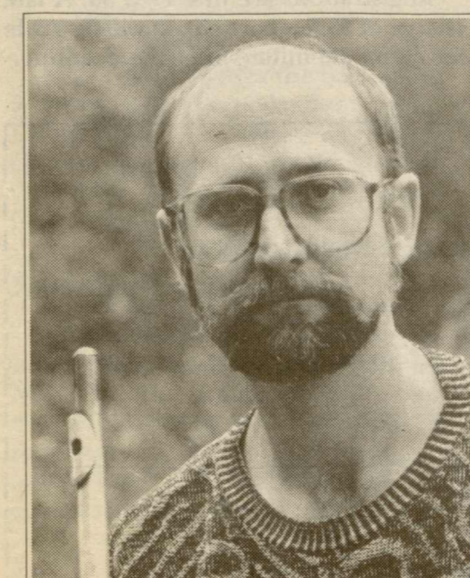
A 1981 graduate of U.Va., Slon holds a master of education degree from Harvard. He succeeds Barrett H. Carson, who left to become associate vice president for development at Virginia Tech.

## Smith Appointed Personnel Director

Gretna Y. Smith has been appointed director of personnel services.

Smith has worked at the College since June 1990 as classification and compensation supervisor. In her new position she will supervise employment and employee relations, classifications and compensation, benefits and transactions. She succeeds Charles Dombek, now associate director of auxiliary services at the College.

Previously Smith served as personnel practices analyst for the Virginia Department of Transportation, as well as holding a number of positions in private industry. She holds a B.S. degree in psychology from James Madison University and is working toward a master's degree in public administration from Virginia Commonwealth University.



John Fonville

## Flutist John Fonville To Play For Ewell Concert Series Nov. 3

John Fonville, flutist and composer, will give an afternoon concert at 3 p.m., Sunday, Nov. 3, in Ewell Recital Hall as part of the Ewell Concert Series.

Tickets are \$2 at the door. William and Mary students will be admitted free with valid I.D. There are no advance ticket sales.

Fonville has committed himself to exploring and expanding the flute's acoustical and expressive possibilities, and has presented innumerable new works for flute by living American composers.

He will open his program with "Music for Sarah 1981." "Dancer Sarah Brumgart asked me for music. 'Music for Sarah' is the response," says Fonville. "The music is directly influenced by her technical and emotional abilities as a

dancer. The 'extended' techniques for flute are aligned with her isolation skills and her ability to perform on several levels simultaneously. The music framework is based on non-Western sources."

"Terms of Temporal Detailing for Bass flute 1989: Homage to David Hockney," by Joji Yuasa, was commissioned by the National Endowment for the Arts and composed at the request of Sebastian Winston. The piece was inspired by photo-collages by English painter David Hockney, in which several images of a scene taken from the same angle in close succession are amalgamated.

Composer Brian Ferneyhough has used the associations of borders and boundaries evoked for him by extremely high or low instrument in "Superscriptio

1981 for Solo Piccolo."

William DeFotis, assistant professor of music, is the composer of "Piece for Flute Solo with Tape Accompaniments 1980," which will conclude Fonville's program. "I wanted to create in music a structure often found in literature, theater and film," explains DeFotis. "A character's (male in this case) predicament is perceived by the audience, but not by the character himself."

The Ewell Concert Series is sponsored by the department of music and funded by the Association of Parents.

The next concert in the series will be Nov. 10 and will feature songs and duets from the time of the Civil War sung by Mary Eason Fletcher and Ryan Fletcher with accompaniment by pianist Tom Marshall.

## Jazz Ensemble Brings Back The Big Band Sound

The music made famous by such musical giants as Duke Ellington and Count Basie will be featured in the program of the William and Mary Jazz Ensemble; Laura Rexroth, conductor; at 8 p.m., Thursday, Nov. 7 in Phi Beta Kappa Memorial Hall.

Admission is \$2 at the door. Block seating may be arranged for groups of 10 or more. For information call Laura Rexroth at ext. 11086.

Now in its second year, the William and Mary Jazz Ensemble is a 23-piece big band that performs all styles of jazz. Student soloists are featured prominently in the swing, rock, Latin, ballad, blues and symphonic jazz repertoire.

The concert program will include such works as "All of Me," "A Night in Tunisia," "Granada Smoothie," "Don't Get Around Much Anymore," "Blue Birdland" and "Wind Machine." The William and Mary Combo from the band will also perform a set of tunes.

## Virginia Institute Of Marine Science/School Of Marine Science Recent Grants

CONTINUED FROM PAGE 2.

Recent grants for the School of Marine Science include:

**Boon, John**, professor, and **Suzette Kimball**, associate research scientist, "Coastal Evaluation and Monitoring Project, Curaçao," Princess Beach Resort, \$4,500.

**Boon, John**, professor, and **Suzette Kimball**, associate research scientist, "Shore Erosion Research and Technical Analysis Program," Division of Conservation and Recreation, \$106,500.

**Chittenden, Mark L.**, professor, "Development of Age Determination Methods, Life History Population Dynamics Information, and Evaluation of Growth Overfishing Potential for Important Recreational Fishes," U.S. Fish and Wildlife Service, \$128,928.

**Colvocoresses, James**, assistant professor, "Estimation of Relative Abundance of Recreationally Important Finfish in the Virginia Portion of the Chesapeake Bay," U.S. Fish and Wildlife Service, \$207,817.

**Diaz, Robert J.**, associate professor, **Morris H. Roberts**, professor, and **Linda Schaffner**, assistant professor, "Solution to Hydroids in the Service Water System, Surry Power Station," \$384,700.

**Faisal, Mohamed**, associate research scientist, "In Vitro Effects of B(A)P on Fish Cytotoxic Leukocytes," National Institute of Environmental Health Sciences, \$118,341.

**Hale, Robert C.**, assistant professor, "Analysis of PCT/PCB in NASA Soils," EBASCO, \$21,180.

**Hale, Robert C.**, assistant professor, and **Michael A. Unger**, assistant research scientist, "Analysis of Sediment and Tissue Samples for Bioconcentratable Chemicals," State Water Control Board, \$233,465.

**Hale, Robert C.**, assistant professor, "Analysis of NASA Wipe Tests for PCB/PCT," Kelsey-Seybold, \$9,000.

**Hardaway, C. S.**, marine scientist, **Suzette Kimball**, associate research scientist, "Bank Nutrient Verification Study, National Oceanic and Atmospheric Administration, \$24,930.

**Hershner, Carl**, associate professor, "Wetlands Training Technical Advisory

Assistance," Chesapeake Bay Local Assistance Department, \$13,000.

**Hershner, Carl**, associate professor, "Wetlands Protection-State Development Grant Program," Environmental Protection Agency, \$66,124.

**Hershner, Carl**, associate professor, and **Suzette Kimball**, associate research scientist, "Water Resources Management Plan/Colonial National Historical Park," National Park Service, \$88,214.

**Hobbs, Carl H.**, assistant professor, "Geophysical Reconnaissance of a Portion of the Area Offshore from Jamestown Island, Virginia," Thomas Smythe Foundation, \$11,009.

**Huggett, Robert J.**, professor, and **Michael E. Bender**, professor, "Laboratory and Field Assessment of Biomarkers as Indicators of Toxic Effects as an Addendum to Cohesive Sediment Resuspension and Deposition in Tidal Estuary Flows," Environmental Protection Agency, \$49,850.

**Kator, Howard**, associate professor, **Martha Rhodes**, marine scientist, and **Gerald Johnson**, professor, "Evaluation of Selected Bacteriophages as Indicators of Septic Contamination of Groundwater," Virginia Water Resources Research Center, \$23,628.

**Lipcius, Romuald**, assistant professor, "A Stock Assessment Program for Chesapeake Bay Fisheries: A Field Study of the Population Dynamics of the Blue Crab, *Callinectes sadidus*, in the Chesapeake Bay," National Marine Fisheries Service, \$155,000.

**Loesch, Joseph, G.**, professor, "Study of Alosa Stock Composition in Virginia's Commercial Inshore Fisheries," National Marine Fisheries Service, \$55,000.

**Loesch, Joseph, G.**, professor, "A Mark-Recapture Study of Striped Bass in the James and Rappahannock Rivers, Virginia," U.S. Fish and Wildlife Service, \$136,318.

**Loesch, Joseph, G.**, professor, "A Stock Assessment Program for Chesapeake Bay Fisheries: Development of an *Alosa* Juvenile Index of Abundance," National Marine Fisheries Service, \$125,000.

**Lucy, Jon A.**, marine scientist, and **Aaron Adams**, graduate student, "Population Structure of Fishes Associated with an Offshore Reef," Sports Fish Institute, \$2,500.

**Lynch, Maurice P.**, professor, "Compilation of Comprehensive Information on the Life History, Relative Abundance and Distribution of Estuarine Fishes and Invertebrates for the Estuarine Living Marine Resources Project," National Oceanic and Atmospheric Administration, \$13,439.

**Lynch, Maurice P.**, professor, "Summer Funding Grant for Undergraduate Research Experience," Sam Houston State University, \$1,500.

**MacIntyre, William G.**, professor, and **E. Laurence Libelo**, graduate student, "Measurement of Groundwater Nutrients and Trace Organics at Goodwin Islands Estuarine Research Reserve," National Oceanic and Atmospheric Administration, \$11,461.

**Mann, Roger**, professor, and **Mark Luckenbach**, associate research scientist, "Intensive Culture of Oysters, *Crassostrea virginica*, in the Chesapeake Bay: Development of Models to Predict Optimum Site Selection for Off-bottom Culture," National Coastal Resources Research and Development Institute, \$10,000.

**Mann, Roger**, professor, and **Mark Luckenbach**, associate research scientist, "Intensive Culture of Oysters, *Crassostrea virginica*, in the Chesapeake Bay: Field Growth Comparisons of Triploid and Diploid Oysters," Center for Innovative Technology, \$47,466.

**Morgan, Lee**, graduate student, "Logistical Support for Travel for Study of Population Genetics in Blue Marlin/Puerto Rico," Lerner-Gray Fund for Marine Research, \$625.

**Musick, John A.**, professor, and **John A. Keinath**, graduate student, "Abundance and Distribution of Sea Turtles off North Carolina," Department of the Interior/Minerals Management Service, \$80,302.

**Musick, John A.**, professor, "Research Biotelemetry as a Tool for Assessing Dredging Effects on Sea Turtle Activity in the Brunswick Ship Channel," Army Corps of Engineers, \$18,881.

**Musick, John A.**, professor, and **Steven Branstetter**, assistant research scientist, "Distribution, Abundance and Stock Composition of Sharks Important to Recreational Fisheries in Virginia," U.S. Fish and Wildlife Service, \$222,405.

**Neilson, Bruce J.**, professor, "Mainstream Monitoring, Chesapeake Bay," Environmental Protection Agency,

\$273,920.

**Neilson, Bruce J.**, professor, "Dissolved Oxygen Data from Near Bottom Waters in Chesapeake Bay," Environmental Protection Agency, \$7,000.

**Nichols, Maynard M.**, professor, "Sediment Inventory and Date Base Development for Characterizing the Contaminant Status of Estuaries," National Oceanic and Atmospheric Administration, \$149,830.

**Orth, Robert J.**, associate professor, and **Kenneth A. Moore**, marine scientist, "Distribution of Submerged Aquatic Vegetation in the Chesapeake Bay and Its Tributaries and Chincoteague Bay," Environmental Protection Agency, \$135,000.

**Orth, Robert J.**, associate professor, **Richard Wetzel**, professor, and **Kenneth A. Moore**, marine scientist, "Role of Light Attenuation Processes and Plant Sediment Interactions in Determining Seagrass Survival," National Oceanic and Atmospheric Administration, \$60,500.

**Perry, James**, assistant research scientist, "Analysis of Yearly Changes in Vegetation Patterns of Tidal Wetlands of the Chesapeake Bay," Earthwatch Foundation, \$10,125.

**Vogelbein, Wolfgang K.**, assistant research scientist, **Craig E. Smith**, associate research scientist, **Michael A. Unger**, assistant research scientist, and **David E. Zwerner**, marine scientist, "Development of the Mummichog, *Fundulus heteroclitus* as an Indicator of Chemical Carcinogens in Urbanized Coastal Environments," Environmental Protection Agency, \$69,865.

**Webb, Kenneth L.**, and **Kevin Kiley**, marine scientist, "Demonstration of Capability to Detect and Quantify Surface Chlorophyll from Aircraft-borne Ocean Color Instruments in the York River, VA and Patuxent River, MD," National Oceanic and Atmospheric Administration, \$46,758.

**Wetzel, Richard**, professor, "Ecosystem Modelling and Simulation Analysis of Subtropical and Tropical Seagrass Systems: Response to Selected Global Climate Change Variables, U.S. Fish and Wildlife Service, \$20,000.

**Wetzel, Richard**, professor, "The York River Regional Ecosystem: Ecosystem Modelling and Simulation Analysis in a Management Framework," Environmental Protection Agency, \$99,172.

## Monroe Papers Conference Slated At Ash Lawn-Highland In Charlottesville

Ash Lawn-Highland and the Commonwealth Center for the Study of American Culture will co-sponsor a Monroe papers conference, "James Monroe: An Evolution in Leadership," in Charlottesville at the Holiday Inn-Monticello, Nov. 8-9.

This conference will provide an opportunity for scholars to share valuable information with the general public on America's fifth president, James Monroe. Monroe scholars will present papers assessing the current state of Monroe-related scholarship, new fields of investigation, and a proposed multi-volume documentary edition of the papers of James Monroe.

During the discussion periods, the audience is invited to explore with the scholars the role Monroe played in American political and social history, and to voice its interest in the publication of Monroe documents.

The first session includes papers on "Monroe and the West" by Peter Onuf, University of Virginia; and "Monroe and the Latin American Wars of Independence" by Daniel Preston, Virginia Wesleyan College, will be chaired by Edward Crapol, professor of history, College of William and Mary

Emory Evans of the University of Mary-

land will chair the second session. The following papers will be presented: "Monroe as Planter" by Gerard Gawalt, Library of Congress; and "Monroe's Political Theory" Stephen Jolivet, University of California, Irvine.

John Stagg of the Papers of James Madison at the University of Virginia, will chair the first afternoon session which will be devoted to a panel discussion of "James Monroe: His Life, His Career, and His Time - Suggestions for Future Study." Panelists will include Harry Ammon, Southern Illinois University,

Carbondale; Professor Crapol, Noble Cunningham, University of Missouri-Columbia; and Claudine Ferrell, Mary Washington College.

Before dinner that evening participants will tour Ash Lawn-Highland with James Wootton, Ash Lawn-Highland curator.

A roundtable discussion on the size, format and content of published volumes will be taken up at the Saturday morning session, Nov. 9, which will be chaired by Thad Tate, director, Commonwealth Center. Panelists will include conference

presenters and John Stagg, Papers of James Madison, and Dorothy Twohig, Papers of George Washington, both from the University of Virginia.

Registration fee for the entire conference including Friday lunch, dinner and tour, and the Saturday session and a box lunch is \$50. A student ticket (meals omitted) is \$8 with photocopy of student I.D. required with registration form.

Registrations are due Oct. 30. A late charge of \$5 per participant will be made for forms submitted after the deadline.

### Registration Form

**Deadline: October 30**

Enclosed is my check in the amount of \$ \_\_\_\_\_ for the Monroe Papers Conference Registration Fee.

Name \_\_\_\_\_

Address \_\_\_\_\_

City \_\_\_\_\_

State/Zip \_\_\_\_\_

Phone: Day \_\_\_\_\_

Eve \_\_\_\_\_

Please make your check payable to "Ash Lawn-Highland/Monroe Conference" and mail completed registration form and check to:

Route 6, Box 37, Charlottesville, Virginia 22902-8722

## NOTES

### Quartetto Beethoven di Roma Performance Nov. 5

The Quartetto Beethoven di Roma will perform at 8 p.m., Tuesday, Nov. 5 at the arts auditorium of the Williamsburg Regional Library.

This concert is the second of the 1991-92 season presented by the Chamber Music Society of Williamsburg.

The program will include "Quartet for piano and strings in E-flat Major, Opus 47" by Robert Schumann and "Quartet for piano and strings in C-Minor, Opus 13" by Richard Strauss.

A limited number of tickets will be available the evening of the performance. For information and reservations please call ext. 10241.

### Deadlines for Career Services

Friday at 5 p.m. is the deadline for students to submit resumes for the Washington Area Job Connection, Jan. 10.

Students who plan to participate in the Minority Career Day at the University of Virginia must register by 5 p.m. on Friday.

The Office of Career Services is located at 123 Blow Memorial Hall.

The Office is sponsoring a Graduate and Professional School Day from 1 to 4 p.m., Thursday, Oct. 24 in William and Mary Hall.

A list of the colleges and universities participating is available in the Office of Career Services.

### Watch Fox On Sunday

"Parker Lewis Can't Lose," scheduled for 7:30 p.m., Sunday, Oct. 27 on the Fox network, was written by Sheryl June Anderson '80. Anderson, who produced a full-length original play "For Want of a Shoe," her senior year for Premiere Theatre, was also winner of the Prentice Hall Memorial Award in theatre established by Anna Belle Koenig Nimmo '45 of Golder, Colo.

### Alumna Writing

#### For 'Knots Landing'

Lisa Siedman '82 former executive story consultant for the series "Dallas," is currently on the staff of the long-running series "Knots Landing." Siedman has also recently completed her first novel.

### Matoaka Clean-Up

The Campus Conservation Coalition (CCC) is sponsoring a clean-up operation of the Matoaka trail beginning at 9 a.m., Saturday, Oct. 26, in front of the Common Glory parking lot.

Everyone is invited to participate. Volunteers will be served breakfast.

### Students United For The Bay

Students United for the Bay (SUB) is hosting a speaker from the Virginia Living Museum to address issues concerning the environment, Wednesday, Oct. 30 at 7:30 p.m. in the Campus Center, room D.

### Savings Opportunity

The London Fog factory outlet in Lightfoot, at the Williamsburg Outlet Mall, will offer an additional 10 percent off anything and everything in their store to William and Mary faculty and staff with valid IDs, on Saturday and Sunday, Oct. 26 and 27.

## Swem Library Staff Assists Scholar/Researcher

CONTINUED FROM PAGE 1.

gaged in research for *PLRE*. The project's interdisciplinary character is reflected in the variety of fields represented by the contributing editors whose numbers include legal historians, rare book librarians and art historians as well as scholars in theology, literature and the history of science.

Those advising *PLRE* show a similar diversity, and besides McKitterick, include Elisabeth Leedham-Green, deputy keeper of the University Archives and fellow of Darwin College, Cambridge; James K. McConica, Fellow of All Souls, Oxford; Laetitia Yeandle, curator of manuscripts at the Folger Shakespeare Library; and Mark Curtis, past president of the Association of American Colleges. Dr. Leedham-Green also serves *PLRE* as editor in the United Kingdom.

Volume 1 of *PLRE*, completed this summer, catalogs a total of 1,387 books from four private libraries derived from manuscripts dating between 1581 and 1642. The second volume, now ready for the press, will be the first of five to present the entire set of itemized libraries found in the probate inventories of 166 scholars and privileged persons who died at Oxford University between 1507 and 1653 with collections totalling more than 10,000 books. The intention beyond these volumes is to publish book-lists associated with men and women socially, economically and educationally different from the gentry, the clergy and the professionally academic, who are represented in these first installments.

In addition to the printed volumes, the project publishes a cumulative catalog in the form of a computerized database on CD-ROM. This database con-

tains all the material available in the printed form plus details about the books' owners, the book-lists themselves (e.g., when and where they were compiled and for what purpose) and a variety of other information, including the subject of each book listed and its current location, if known. Parallel information for book-lists already published elsewhere is regularly added to the *PLRE* database. Scholars can then arrange and search the cumulative catalog to construct, for example, a profile of the readership of particular works or authors or to identify the languages and subject fields represented in collections associated with a particular profession, region or range of years.

Prior to receiving the NEH grant, *PLRE* received funds from the British Academy and Cambridge University Library. Funds to assist the completion of *PLRE*'s first volume came from the Folger Shakespeare Library and the Netherlands Organization for Scientific Research.

The project has received support from the College in the form of computer

equipment and student assistance. In addition, Fehrenbach has been awarded several College research grants.

"The assistance the project has received from individuals at the College reflects, in part, the diverse character of the project's requirements," Fehrenbach notes. "The staff of Swem Library, particularly Berna Heyman, and the Office of the Vice Provost for Information Technology have done much to meet the project's varied needs. *PLRE* is especially indebted to Pete Hoyle and Lance Richardson for their indispensable technical assistance." Over the years several undergraduates have become interested in the project and volunteered their time to *PLRE*. Fehrenbach says that "it is gratifying to see such diverse and wide involvement in what is necessarily a collaborative effort."

*PLRE* is published in the United States by Medieval and Renaissance Texts and Studies and in England by Adam Matthew Publications, which also has primary responsibility for producing *PLRE*'s cumulative catalog on CD-ROM.

### Tour of Restaurants

The 1991 Tour of Excellent Restaurants, a fundraiser by the Lafayette Educational Fund to provide scholarship funds for graduating seniors from Lafayette High School is now underway.

The \$20 coupon book offers buy-one-get-one-free meals at 23 Williamsburg area restaurants.

Last year over \$45,000 was raised and awarded to over 30 seniors. This year's goal is \$55,000.

Coupon books are available at all local Crestar banks.

For further information call Merry Feyock at 220-3122 or ext. 13650.

## CLASSIFIED ADVERTISEMENTS

*Classified ads are included as a service to members of the College community and will be accepted from faculty, staff, students and alumni only. Ads should be no longer than 40 words and must be submitted in writing to the William and Mary News office no later than 5 p.m. on the Friday preceding the first insertion.*

#### FOR SALE

Motorcycle helmet, almost new (worn one week), Shoei RF-200, black and beautiful, cost \$220, asking \$150 or best offer. Must sell. Call Brian at 229-0898 or contact at Cheese Shop. (11/6)

Sony CDP-C700, 5-disc CD changer, year old, great features, \$300. Marshall JCM 800-4010 combo guitar amplifier, 50 watts with 12" speaker, hardly used, \$350. Call Mark at 220-5455. (11/6)

1989 Hyundai Excel, in great condition, new tires, low mileage (46,000), AM-FM, cassette, etc., \$6,000. Price is negotiable. For information, call Elizabeth, ext. 12160. (11/6)

1983 Toyota Tercel wagon, 4-wheel drive, 5-speed, 104K, Michelin tires, Kenwood tape deck, new brakes, inspected, roof rack; excellent condition, well-maintained. \$3,000 or best offer. Call 693-7042 (home) or 642-7395 (VIMS). (10/30)

Color computer monitor; Tandy CM-5, 14" RGBI, 320 dots x 225 lines. Never used. \$150 (list price \$300). Call ext. 13889. (10/30)

GE refrigerator—runs well, some rust spots on finish, \$175. Whirlpool clothes dryer, \$80. Old GE refrigerator, \$60 or best offer. Call 229-2712. (11/6)

Black velour twin dresses with removable collars, size 4, \$15 for both. Twin items, jackets, short and long coats reasonably priced. Call 565-2819 after 6 p.m., Monday through Friday; Saturday, 8-11 a.m., 6-9 p.m. (10/30)

Four bar stools, captain's chair style, swivel, gold ring foot rest, good condition, seat height 29" from floor. \$30 each or 4 for \$100. Call 220-0929. (10/30)

Waterbed, king size, baffled, 4-drawer, bookshelf. \$250 or best offer. Also two desks: one older, big, lots of drawers, \$50; the other newer, computer type, shelves above, \$60. Call 693-7042 (home) or 642-7395 (VIMS). (10/30)

1988 Bayliner, 19-ft. Cuddy Cabin, 1989 easy load trailer, 130 I/O OMC, power winch, two covers, Coast Guard package, skis. Excellent condition, kept inside. \$7,500. Call between 9 a.m. and 3 p.m., 220-0206. (10/16)

Portable computer with printer. Software includes Wordstar, database, spreadsheet, Mailmerge. Perfect for undergrad. \$500 or best offer. Call 220-4891. (10/16)

1985 GMC Jimmy Sierra Classic, 305 V8, power steering, brakes, windows and door locks; tilt wheel; AM-FM cassette; AC; 4WD; 31-gallon tank; less than 24,000 miles. Very good condition. Call Wes at 886-0721 (days) and 642-2573 (evenings). (10/16)

1972 Volvo 142E. Converted to 2-barrel Weber carburetor, 25+ mpg, excellent mechanical condition, new brakes and tires, good body. Also, 1970 Volvo parts car—many excellent motor and body parts. Both for \$1,200 or best offer. Call ext. 12720. (10/16)

#### FOR RENT

Room for rent, 10 minutes from campus in 3-BR, 2-1/2 bath, Skiffe's Creek townhouse. \$225 per month plus 1/3 utilities. Seeking non-smoker, professional/grad student. Fenced back yard with sundeck, washer/dryer. Call Greg at ext. 13411 (days) or 887-2658 (evenings). (10/30)

Family vacation cottage, Nags Head MP6. Enjoy fall at the beach! Two BRs, sleeps 6. Central heat and AC, washer/dryer, microwave, cable TV, VCR and phone. Off-season rates, \$40 nightly. Call Betty Jo at ext. 13433 (days) or 566-1075 (evenings). (10/30)

Outer Banks family vacation home (north of Duck); 5 BRs, sleeps 12. Three tiled full baths (two whirlpools). Central AC, heat, microwave, dishwasher, washer/dryer, TV, VCR. No smoking or pets. Excellent ocean view, 150 yards to beach, tennis. Off-season rates by week or 3-day weekend. Call ext. 13889. (10/30)

Seasons Trace townhouse, unfurnished, 5 miles from campus. Available Jan. 1992. Approximately 2,000 sq. ft., 2 BRs, 2-1/2 baths, fireplaces, study, finished basement, one-car garage and deck. \$650 per month. Call ext. 12034 (office) or 565-4714 (evenings). (10/23)

#### WANTED

Working mother needs a female College student to tutor/babysit a nine-year-old girl a few afternoons a week at her home. Call 229-6555 (evenings) for details. (11/6)

Retired professor, now writer, and husband desire furnished apartment until Jan. 1 (also next summer) near Williamsburg Crossing. Will pay rent or swap for same in our home in Exuma, Bahamas. Have video of sailing, bone fishing and scuba diving there. References available. Call and leave message at 229-8066. (10/16)

#### SERVICES

Kitchen and bathroom countertops replaced. Formica, Wilsonart, Nevamar and cultured marble (bath only). Quality work, reasonable rates! Call Bob at 890-0982 after 6 p.m. (10/16)

## EMPLOYMENT

**Housekeeping Worker (Unclassified)**—\$6.49 per hour, part time, approximately 30 hours per week. Shift begins 7 a.m.; occasional overtime may be required. #H026. Location: Residence Life.

**Secretary (Unclassified)**—\$6.49 per hour, approximately 30 hours per week. #H134. Location: Academic Advising.

**Fiscal Assistant (Unclassified)**—\$7.10 per hour, part time, approximately 30 hours per week. #H157. Location: Advancement Systems.

**Laboratory Specialist (Grade 8)**—Entry salary \$19,283. #118. Location: VIMS (Biological and Fisheries Sciences).

**Programmer (Grade 10)**—Entry salary \$23,044. #598. Location: Advancement Systems.

*The following position is limited to applications from current William and Mary and VIMS employees only:*

**Housekeeping Worker (Grade 1)**—Entry salary \$10,335. Shift begins 5 a.m.; occasional overtime may be required. #176. Location: Facilities Management.

# CALENDAR

## Campus

### Wednesday, Oct. 23

**Soberfest:** Volleyball tournament, Yates Field, 4 p.m.; Mock trial, "You Be the Judge and Jury," Washington 200, 7:30 p.m.

**Concert:** W&M Concert Band and Bruton Parish Church choir, Bruton Parish Church, 8 p.m.

### Thursday, Oct. 24

**Soberfest:** Off-campus activity night: bowling, movies, miniature golf, etc. Transportation provided. For information, go to the Soberfest table in the lobby of the Campus Center.

**United Nations Day:** Talk by Richard F. Staar, former U.S. ambassador, CC ballroom, 7:30 p.m.

**Deadline:** Faculty Summer Research Grants. For information, call ext. 14563.

**Town & Gown luncheon:** David L. Watson, speaker; CC ballroom, 12:15 p.m.

**Women's Studies Brown Bag Lunch Series:** "Women and the Modern Islamic Resurgence," John Williams, religion, Charles Center lounge, Tucker Hall, noon to 1:15 p.m.

**Public Policy Colloquium:** "The Political Economy of Electric Utility Regulation: An Historical View," William J. Hausman, professor of economics, Morton 342, 3:30 p.m.

**W&M Theatre Second Season:** "Burn This," senior directorial project, Lab Theatre, PBK, 7 p.m.

### Friday, Oct. 25

**Deadline for submission of resumes for "Washington Area Job Connection to Office of Career Services.** For information, contact Career Services, Blow Memorial Hall 133, ext. 13240.

**Registration Deadline for Minority Career Day,** sponsored by UVA in Charlottesville, Nov. 5. For information, call ext. 13240.

**Registration Deadline for Regional Student Pugwash USA Conference.** (See listing under Oct. 31.)

**Oral examination for Ph.D.:** Aaron D. Peters, "Photodetachment Cross Section of H- in Perpendicular Electric and Magnetic Fields," Small Physics Lab, 10 a.m.

**Physics Colloquium:** "Photo-assisted Deposition of Metal Films: Toward a Microscopic Description" by Frances A. Houle, IBM, San Jose, Small Physical Lab, 4 p.m., Coffee, Small 123, 3:30 p.m.

**Soberfest:** 5-K Give or Take Run, W&M parking lot, 4 p.m.; "Sundance Party at Sundown," The Commons, 5 to 8 p.m.; Step Show, CC ballroom, 8 p.m.

**Reves Hall Council coffee hour:** "European Unification," Professor Clay Clemens, assistant professor of government, Reves 1st floor lounge, 5 p.m.

**W&M Theatre Second Season:** "Burn This," senior directorial project, Lab Theatre, PBK, 7 p.m.

### Saturday, Oct. 26

**Office of Admission open house** for prospective students and families, all day.

**CommonHealth 2nd Annual Run For Wellness,** Eastern State Hospital picnic grove, 9:30 a.m. For information, call 253-4195 or ext. 12776.

**Comprehensive Recycling program collection,** W&M Hall parking lot and Crim Dell amphitheater, 9 a.m. to 1 p.m.

**Gifted Learners Classes,** 9 to 11:30 a.m.

**Children's Art Classes,** Muscarelle Museum, 9 a.m. to 12:30 p.m.

**W&M Theatre Second Season:** "Burn This," senior directorial project, Lab Theatre, PBK, 7 p.m.

### Sunday, Oct. 27

**Women's Soccer** vs. New Hampshire, Barksdale, 1 p.m.

**Music at the Muscarelle:** Concert commemorating 200th anniversary of Mozart's death, Muscarelle Museum, 4 p.m.

**W&M Theatre Second Season:** "Burn This," senior directorial project, Lab Theatre, PBK, 7 p.m.

### Monday, Oct. 28

**French House film:** "Au Revoir Les Enfants," 8:30 p.m.

**Christopher Wren Association:** Session B begins. (Schedule of courses available by calling ext. 11079.)

**Movie:** "Gaslight," Charles Center, Tucker basement, 8 p.m. Free and open to public.



### A Broadway Revue, Nov. 1, 2

The Covenant Players, a joint association between the Episcopalian and Catholic Student associations, will present its second annual Broadway Revue on Friday, Nov. 1 and Saturday, Nov. 2 at 8:15 p.m. in Ewell Recital Hall. Admission is \$3 at the door.

The show is a lively singing and dancing collage of some of the best of Broadway. It is directed by junior Betsy Torresson and produced by junior Heather McIntyre; choreography by juniors Elizabeth Zins and Danielle Curitore; cast: Heather Miller, Heather Conrad, Jennifer Downs, Ashley Bevilacqua, Diane Petillo, Laura Serafine, Virginia Long, Danielle Curitore, Beth Zins, Betsy Torresson, Peter Mantey, Joe Whitmore, Peter Colohan, Michael Harding, Joe Wajszczuk, T.K. McLaughlin, Stuart Ranson, Darren Jinks, Ray Good and Jonathan Spangler.

### Tuesday, Oct. 29

**IEAHC paper presentation:** "The Making of an American Thinking Class: Intellectuals and Intelligentsia in Puritan Massachusetts" by Darren M. Staloff, postdoctoral Fellow, Institute of Early American History and Culture, Swem Library, 7:30 p.m.

**Women's Studies Film:** "The Company of Wolves," Charles Center lounge, Tucker Hall, 7:30 p.m.

**Student Pugwash,** rooms A&B, 8 p.m.

### Wednesday, Oct. 30

**Men's Soccer** vs. ODU, Busch Field, 7:30 p.m.

### Thursday, Oct. 31

**Regional Student Pugwash USA Conference** on "The Population Squeeze," W&M campus. For information, call ext. 14117 or 1-800-WOW-A-PUG. (Through Nov. 3.)



### Ben & Jerry's Offer Ends Oct. 31

Ben & Jerry's Ice Cream is donating 50¢ of every ice cream sundae sold in October to Swem Library. This offer ends Oct. 31. Last year the Library realized over \$640 from these sales. "Because of budget cuts, the needs of the Library are crucial. We are especially pleased to receive assistance from a community neighbor," said University Librarian Nancy H. Marshall. Above, members of the Library staff show their support on a recent visit to Ben & Jerry's.

**Town & Gown luncheon:** Jim McCord and Dave Kleppinger will speak on the Historic Rivers Land Conservancy, CC ballroom, 12:15 p.m.

**Public Policy Colloquium:** "Courts, Elected Government, and the Enforcement of Civil Rights," Neal Devins, associate professor of law, Morton 342, 3:30 p.m.

### Friday, Nov. 1

**Chemistry Seminar:** "Adventures in Carbene Chemistry" by Robert Moss, chemistry department, Rutgers Univ.; Rogers 100, 3 p.m. (Refreshments at 2:30.)

**Reves Hall Council coffee hour:** "Quincentenary of Columbus' Voyage," Professor James Axtell, professor of history, Reves 1st floor lounge, 5 p.m.

**Orchestrations:** "Dancevent," PBK, 8:15 p.m.

**Covenant Players:** Broadway Revue, Ewell Recital Hall, 8:15 p.m. Donation: \$3 at the door.

### Saturday, Nov. 2

**Comprehensive Recycling program collection,** W&M Hall parking lot and Crim Dell amphitheater, 9 a.m. to 1 p.m.

**Gifted Learners Classes,** 9 to 11:30 a.m.

**Children's Art Classes,** Muscarelle Museum, 9 a.m. to 12:30 p.m.

**Mid-Atlantic Medieval Hispanic Research Seminar:** "De Jorge Manrique a Garcilaso: un replantamiento historiográfico," Aurora Hermida-Ruiz, UVA; "The Scholarly Edition of Medieval Texts in the Electronic Age: the Wider Implications of the Present Technological Revolution on Teacher/Scholars," Frank Domínguez, UNC-Chapel Hill; Washington Hall, 2 to 4 p.m. For information, call ext. 13676.

**Field Hockey** vs. American University, Busch Field, 2 p.m.

### Wednesday, Nov. 6

**Women's Studies Brown Bag Lunch Series:** "Women in Medieval Europe," Mary Ann Brink, history, Charles Center lounge, Tucker Hall, noon to 1:15 p.m.

### Thursday, Nov. 7

**Town & Gown luncheon:** Kuwait Art Exhibit, Caroline Williams, CC ballroom, 12:15 p.m.

**Public Policy Colloquium:** "Everybody Wants A Winner," Ronald B. Rapoport, professor of government, Morton 342, 3:30 p.m.

### Friday, Nov. 8

**Reves Hall Council coffee hour:** "International Fashion Show," Reves 1st floor lounge, 5 p.m.

### Saturday, Nov. 9

**Concert Series:** Boys Choir of Harlem, PBK, 8:15 p.m. For those who do not have season tickets, general admission is \$15. Reserve tickets by calling ext. 13300 or 13276.

## Exhibits

### Muscarelle Museum

Through Nov. 10

"The Buck Stops Here," original oil paintings from the recently published children's book *The Buck Stops Here* by Alice Provensen, on loan from the Henry Feiweil Gallery in New York City.

Through Nov. 10

"African Art: Power, Wisdom and Passages"

Through Nov. 10

"Old Master Drawings from the Herman Foundation"

### Zollinger Museum, Swem Library exhibit

Through Nov. 1

"Glimpses of Old Williamsburg"

## What's Cooking

Julia Child, "America's laureate cook," will be in Williamsburg Nov. 8-10 at the Williamsburg Christmas Show in William and Mary Hall.

She will lecture on holiday cooking at 1 p.m. on Nov. 8 and 9 with an autographing session to follow each lecture. A selection of her books will be for sale at the show, including her newly released *Julia Child's Menu Cookbook*.

The Christmas Show which will be open Friday, Nov. 8 from 10 a.m. to 9 p.m.; Saturday, Nov. 9 from 10 a.m. to 7 p.m.; and on Sunday, Nov. 10 from noon to 5 p.m., will feature the work of over 150 artists and artisans from all over the country.

Known the world over for her expertise, style and wit, Julia Child recently reached a new pinnacle, becoming the inspiration for the title and character in an off-Broadway play, "Bon Appetit," with Child being portrayed by actress Jean Stapleton. "Bon Appetit" is the signoff hallmark of her TV show.

Show admission is \$3.50. Julia Child lecture and show admission is \$15.



## WILLIAM & MARY

### NEWS

The William & Mary News is issued weekly during the school year for faculty, staff and students of the College and distributed on campus Wednesday afternoons.

News items and advertisements should be delivered to the News Office, James Blair 310A (221-2639), no later than 5 p.m. the Friday before publication. Notices for the calendar should be delivered to the News Office no later than 5 p.m. the Wednesday before publication.

Barbara Ball, editor

Marilyn Carlin, desktop publishing

Publications Office, production

News deadline: Fridays, 5 p.m.