



Non-profit Organization
U.S. Postage Paid at Williamsburg, VA
Permit No. 26

WILLIAM & MARY

A WEEKLY NEWSPAPER FOR FACULTY, STUDENTS AND STAFF

NEWS

VOLUME XXI, NUMBER 12 • WEDNESDAY, NOVEMBER 13, 1991

REMINDERS

Town & Gown Lunch

Leah Pellet will speak at the Nov. 14 lunch at 12:15 p.m. in the Campus Center ballroom. Her topic will be "Mexican Women Who Work as Crabbickers on the Eastern Shore."

On Nov. 21 Armand Galfo will speak on "German Students' Attitudes Concerning NATO."

There will be no Town & Gown lunch during the Thanksgiving week holiday.

On Thursday, Dec. 5, Mario Zamora, professor of anthropology, will speak on "The Philippines Today: Mount Pinatubo, the Presidency and Other Problems."

The luncheon series will close for the semester with a concert by the Botetourt Chamber Singers of the William and Mary Choir on Dec. 12.

Reservations are necessary and may be made by calling ext. 12640 no later than the Monday before the lunch. There is a \$6 fee.

'A Doll House' Opens Nov. 21

"A Doll House" by Henrik Ibsen will be performed by the William and Mary Theatre at 8:15 p.m., Nov. 21, 22 and 23 and at 2 p.m., Nov. 24. The director is Jerry H. Bledsoe.

The play that "blew the door of 19th-century bourgeois society off its hinges" ushered in the social drama of the modern stage.

The theatre box office at Phi Beta Kappa Memorial Hall is open Monday through Friday from 1 to 6 p.m. and Saturday from 1 to 4 p.m. Phone reservations may be made by calling ext. 12674. Tickets are \$5.

Thursday Auction

The College and Eastern State Hospital and the Department of Historic Resources will conduct an auction of surplus equipment beginning at 9 a.m. in Building 22 of Eastern State Hospital, Thursday, Nov. 14.

Items for auction will include typewriters, calculators, recorders, scientific equipment, miscellaneous office items, computer components, cafeteria equipment, bikes, diving equipment, paint and one large pool filter.

Auction items may be viewed from 8 to 9 a.m. the day of the sale.

For additional information, call Property Control at ext. 12052.

Alpha Of Virginia Selects Seniors For Membership

The following members of the class of 1992 have been elected to membership in Alpha of Virginia Chapter of Phi Beta Kappa.

Cecelia C. Bell, fine arts; Rosemary T. Berger, mathematics; Elena Bonaplata, chemistry; *Anna M. Branscome, English; Melissa A. Bunin, chemistry/English; Kristin L. Burr, French; *Hugh C. Conroy Jr., economics; Javier P. Cramer, computer science; Cynthia L. Davis, computer science; and Shannon B. Downey, French.

Heather A. Ferguson, biology; James E. Green, psychology/linguistics; Darren M. Jiron, physics; Michael P. Kelley, chemistry; Elsa Kuo, biology; Catherine M.

Malooly, biology; Brendon D. MacBryde, English; Sean C. McGearry, economics; Katherine W. Meighan, economics/French; and *David P. Miller Jr., economics.

Stephanie Ann Monn, chemistry; Tanya Renee Myers, chemistry; *Alexandra L. Memecek, chemistry; LeAnn Neubert, psychology; Kurt B. Owen, physics; *David E. Palmer, English; and Christopher L. Paradise, English/government.

Chad W. Pridgen, geology/German; Francis J. Probst III, biology/chemistry; Luisa M. Rebull, physics; Nancy J. Roche, psychology; Stephen C. Rottenborn, biology; Catherine M. Sheil, government; Stephanie D. Silverman, biology; John

W. Staren physics; Hillery L. Stubbs, history; Patricia Ann Takach, anthropology; Mircea C. Todor, physics.

Amelia J. Vinroot, anthropology; *Andrew G. Wells, history; Daisy Wu, economics; and Diana M. Zombeck, biology.

Judith A. Rosman, economics, from the class of 1991, and John P. Barrington, history, of the graduate program in Arts and Sciences, have also been tapped for election. Members-elect will be initiated on Dec. 5, the anniversary of the founding of PBK by William and Mary students in 1776.

*Presidential Scholars

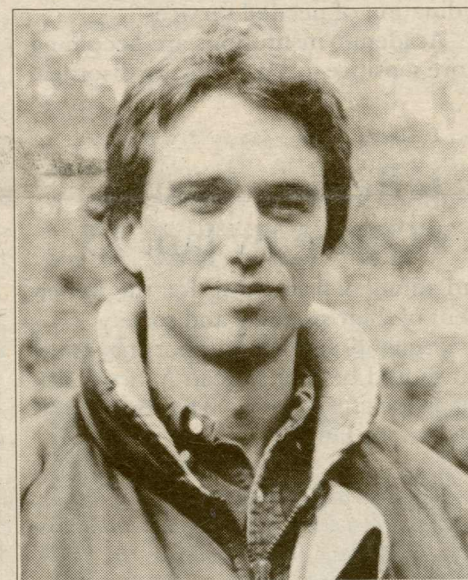
Robert F. Kennedy Jr. Next Speaker On SA Series

Robert F. Kennedy Jr., a litigating lawyer for environmental law and the supervising attorney at the Environmental Litigation Clinic at Pace University Law School, is the next speaker in the Student Association Speaker Series.

Kennedy, son of the late Senator Robert F. Kennedy, will speak on "Our Environmental Destiny" at 8 p.m., Wednesday, Nov. 20 in Trinkle Hall.

Tickets will be sold at the door only. Holders of Speaker Series passes will be admitted free, but must be at the door by 7:30 p.m. to be assured of seating. Tickets are \$8 for the general public; \$4 for W&M community members with W&M ID.

Kennedy's reputation as a resolute defender of the environment stems from a litany of successful legal actions prosecuting polluters of the Hudson River and Long Island Sound. He serves as senior staff attorney for the Hudson River Fishermen's Association and senior attorney for the National Resources De-



Robert F. Kennedy Jr.

fense Council. Earlier in his career he served as assistant district attorney in New York City.

Kennedy is a graduate of Harvard University. He studied at the London School of Economics and received his law degree from the University of Virginia Law School. He received a master's degree in environmental law from Pace University School of Law.

In announcing the Kennedy lecture, SoYoung Lee, SA vice president for cultural affairs said, "... we look not only at what they have to say, but also consider their abilities as speakers. Our first speaker, Maya Angelou, was excellent, and our next speaker, Robert F. Kennedy Jr., also promises to be of such caliber. In addition, as the purpose of the speaker series is to provide an educational venue different from the typical classroom situation, we feel that this event will add to the diversity of the educational experience of the students here at the College."

For further information on the lecture please contact Lee at the SA office, ext.13302.

Search Committee Receives Report From Consultants

During a meeting of the Presidential Search Committee on campus Friday, Nov. 8, members heard a report by Charles B. Neff and Virginia Lester of the Presidential Search Consultation Service (PSCS).

Neff and Lester met with more than 250 members of the College community Thursday and Friday, Nov. 7 and 8, in a series of sessions designed to gather suggestions and comments on the presidential search from various campus constituencies.

The PSCS findings will be combined with input from an upcoming faculty survey and results of a student forum Nov. 13. The resulting document, which will outline qualities sought in the next president of the College, is expected to serve as a centerpiece of the search, according

to search committee chair James W. Brinkley. The document will be used as a guide in the screening of applicants and selection of finalists.

Members of the search committee also

discussed procedures for reviewing applications and the need for maintaining confidentiality during the candidate re-

CONTINUED ON PAGE 2.

Presidential Search Committee Forum For Students

In an effort to provide students with the opportunity to meet with members of the Presidential Search Committee and discuss the qualities they believe the next president should possess, a forum will be held at 8 p.m. tonight in Washington 201.

At the forum, students will be given the opportunity to address faculty and student members of the Presidential Search Committee directly.

NEWS

PAGE 6

STUDENTS

PAGE 5

ALUMNI

PAGE 4

Inclement Weather Policy Announced

William & Mary Concert Band To Perform Nov. 26

Society Underwrites New Recording By The Choir

NEWSMAKERS

Lavach Studying Needs Of Students With Traumatic Brain Injury

"If a student raises a hand to answer a question that the teacher asked 20 minutes ago, that student probably gets branded a smart aleck. ... 'What's with this kid?' the instructor might think.

"A student who asks for extra time to finish an examination may be granted an extra half hour or 10 minutes. That student may need a couple of years, not a couple of minutes."

John Lavach, a school psychologist and professor of education at the College, is talking here about the need for a better understanding of students who suffer traumatic brain injury. Next year Lavach will study this question under a faculty research grant from the university. He will concentrate on 50 students identified as head injured and enrolled in colleges and universities in Virginia. Each student will receive approximately 10 hours of assessment.

Currently students returning to school, for the most part, just find their own way back. There is no disagreement, says Lavach, that few human conditions have as profound an impact on a person, family and friends as does head injury. But, he adds, there is disagreement on the best way to help these students.

Besides the difficulty with organization, abstraction and flexible thinking, affected students lose basic academic skills and are particularly sensitive to frustration, fatigue and coordination difficulties. Head injury victims suffer experience impairment in memory, cognition, thinking, communication, conceptualization, sensory-motor ability and planning—all skills critical to functioning in college. Lavach will look to link the evaluation of injured students with suggestions for curriculum flexibilities that will help them.

"The teacher who gets an answer to a question he asked 20 minutes earlier may not even know the student has been injured and has difficulty retrieving facts. The teacher who gives a student who asks for an extension on an examination 10 more minutes doesn't realize that student may need weeks, months, even years to cope with the assignment. He may think he is just dealing with a student who had a late night," says Lavach. "One state university reports one student with traumatic brain injury who graduated after nine years as an undergraduate. Researchers have found that cognitive tasks which individuals could perform easily in the past, now require significant practice, new instruction strategies and lots and lots of time."

Surveys have shown, says Lavach, that each year in the United States, more than one million children and young adults suffer traumatic brain injury due to motor vehicle accidents, falls, sports injuries and physical abuse. They are among the seven million head injuries reported annually in this country with about one-half million requiring hospitalization. In Virginia, approximately 2,400 head injuries occur each year in the Hampton Roads area alone, most of the victims are children or young adults.

Working with victims' traumatic brain injuries is labor intensive, expensive and not revenue producing, so research is sparse, says Lavach. "Little has been done to achieve some agreement in the academic environment regarding what to do for the head-injured student in the area of assessment, educational planning, personal and social adjustment, and coordination of needed services.

"Academic institutions are becoming more sensitive to AIDS, seizure disorders



John Lavach, seated far right, with Platon G. Gailey, Robert I. Solomon and Sanford P. Martin Jr.

and neurological problems, but few educators have been sensitized to the plight of the brain injured. Lavach plans to disseminate findings of this research through professional journals and presentations at general and national conferences. The Medical College of Virginia Brain Trauma Center for Adults has extended an invitation to share in their database regarding head trauma adults and techniques that have been found useful in assessing that popula-

tion. Findings of this study will be shared with MCV.

As a school psychologist, Lavach is certified to administer and interpret neuropsychological instruments; he currently serves as a staff member of the Head Trauma Rehabilitation Center of Hampton Roads. He is also affiliated with Children's Neurological Services in Richmond and Newport News, and is a member of the American Psychological Association's Division of Clinical Neuropsychology.

Nominations For Thomas Jefferson Awards Due In Associate Provost's Office By Jan. 17

The Thomas Jefferson Awards Committee for the 1991-92 academic year will soon be meeting to choose this year's recipients of the annual Jefferson Award and the Jefferson Teaching Award.

The Jefferson Award is open to anyone currently employed by the College. It is given to a person who has demonstrated a deep devotion and outstanding service to the College as exemplified by the life, character and influence of Thomas Jefferson.

The Thomas Jefferson Teaching Award was established to recognize younger members of the faculty who by their concern as teachers have inspired

and stimulated learning for the betterment of their students and society.

Nominations with supporting material should be sent to Jean A. Scott, acting associate provost, The Brafferton Kitchen, by Jan. 17.

Jefferson attended the College 1760-62, studied law with George Wythe, later first professor of law at the College. In 1779, Jefferson, then as Governor of Virginia, and a member of the Board of Visitors, is credited with establishing William and Mary as a university, revamping the curriculum and introducing the elective system of studies.

Search Committee Receives Report

CONTINUED FROM PAGE 1.

view process. Preliminary screening of nominations and applications is expected to begin in mid-December instead of

early December as originally advertised in *The Chronicle of Higher Education*.

The next meeting of the search committee is scheduled for 9 a.m., Saturday, Dec. 14.

Departments

Anthropology

Professor **Mario D. Zamora** is the author of the biographical profiles of eminent Filipino anthropologists Professor Emeriti E. Arsenio Manuel, Marcelo Tantico and Timoteo Oracion, recently published in the *International Dictionary of Anthropologists*. The volume is edited by C. Winters of the University of Chicago. Zamora is also author of "A Report on U.S. Anthropology" in *Ethnology*, Vienna, Austria. His obituary of the late Professor Fred Egan of the University of Chicago will appear in *The Western Anthropologist*, Lucknow, India.

Computer Center

Judy Ewart, system analyst, represented IBM/CICS FOCUS University users on the "Forum on FOCUS" panel conducted during the recent Information Associates HRS Users Conference in Los Angeles. Representatives of four institutions (The Citadel, William and Mary, Indiana State University and South Carolina State), the IA support representative, and the audience shared FOCUS training methodologies, user reporting environments and data file access strategies.

Ewart also recently spoke to the Virginia FOCUS User Exchange quarterly meeting in Richmond. Her topic, "Extracting FOCUS Databases for User Reporting: Are they Worth the Time, Effort,

and Disk Space?" reviewed the College's implementation of integrated FOCUS FRS accounting data bases designed specifically for user reporting.

English

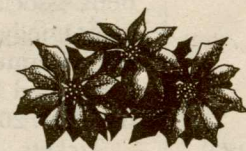
Christopher MacGowan, associate professor, recently published an article "Editing William Carlos Williams' *Paterson*" in *Representing Modernist Texts*, ed. George Bornstein, published by the University of Michigan Press. In the summer MacGowan gave a paper on Williams' book of poems *The Wedge* at a Williams conference at the University of Rome.

Government

Professor **Roger W. Smith** contributed several chapters to books published this

year. His essay, "Fantasy, Purity, Destruction: Norman Cohn's Complex Witness to the Holocaust," appears in Alan Berger, ed., *Bearing Witness to the Holocaust, 1939-1989* (Edward Mellen Press).

His study, "Denial of the Armenian Genocide," and a work written with Herbert Hirsch of Virginia Commonwealth University, "The Language of Extermination in Genocide," were published in Israel Charny, ed., *Genocide: A Critical Bibliographical Review*, Vol. 2 (Mansell and Facts on File). Each entry in this volume consists of an essay on the topic, followed by an annotated bibliography. His extensive review of Richard Hovannisian, ed., *The Armenian Genocide in Perspective* was published in the current issue of *The Journal of Armenian Studies*.



Third Annual Holiday Ball Planned For Dec. 6

The Faculty Club and the College Women's Club are combining their resources again for a gala holiday dance, which will be held from 9 p.m. to 1 a.m., Friday, Dec. 6 in the Campus Center ballroom.

Tickets are \$30 per couple, and include beverages and a light buffet.

Planners, hoping to build on the success of last year's event, have hired the well-established band "Triple Scoop" for the occasion. Dress is semi-formal.

Table reservations must be made by Nov. 16. After that date there will be only open seating. For tickets, call co-chairmen Gary and Kate Shaw at 229-2379.

College To Install Two-Way Radio System

The College has recently contracted with Motorola Communications and Electronics for the purchase and installation of a two-way radio system to serve the entire campus. The system is expected to be activated during the first quarter of 1992 when required licenses are received from the Federal Communications Commission. Service will also be made available on the VIMS campus.

The system will operate out of the Telecommunications Office in Blow Hall, with user departments paying a monthly fee for each radio assigned to them.

An informational session on the new system will be held from 1:30 to 4:30 p.m., Thursday, Nov. 14 in Blow 311. Departments are encouraged to send representatives.

NOTES

Ph.D. Oral Exam

A final Ph.D. oral examination for David B. Opie will be held at 2 p.m., Thursday, Nov. 14 in William Small Physical Laboratory. His dissertation topic is "Superconducting Compact Hydrogen Maser Resonator from $Y_2Ba_2Cu_3O_{7-x}$." The public is invited to attend.

Faculty/Staff Discount

The Marketplace in the Campus Center offers a 20% discount to faculty and staff every weekday from 9:30 to 11 a.m., and 1-3 p.m. There are also free refills on coffee and tea.

Ph.D. Exam

The public is invited to the final oral examination for the Ph.D. degree in physics which will be held in the William Small Physical Laboratory at 1:30 p.m., Friday, Nov. 15 for Richard H. Weening. His dissertation topic is "Completely Bootstrapped Tokamak."

Advocacy For Homeless, Poor

"Poverty and Homelessness—Needs and Responses: An Introduction to Legislative Advocacy" will be the topic of a meeting led by Sue Capers, coordinator of the Virginia Coalition for the Homeless at 3 p.m., Sunday, Nov. 17 in the Wren Building, room 301.

This meeting is open to the campus community and the public.

For further information contact Sharon or Mark Fowler at 229-8829 or ext. 12725.

Friends Book Sale

If you have books to donate to the Friends of the Library annual book sale from 9 a.m. to 4 p.m., Saturday, Nov. 16 and 1 to 5 p.m., Sunday, Nov. 17 in the Botetourt Gallery of Swem Library, please call John Haskell at ext. 13054.

The first two hours on Saturday are reserved for members of the Friends. Membership may be purchased at the door.

Hard cover books are \$3; paperbacks, 50¢.

CommonHealth Seminar

CommonHealth is holding the second of two "What Can You Do To Save The Planet???" seminars and incentive programs at noon, Thursday, Nov. 14 in the Campus Center, room C.

The program will focus on a number of environmental concerns and how they can be addressed.

The Corner Shop

The Muscarelle Museum Corner Shop now has an expanded selection of art notecards and boxed sets perfect for holiday giving. In addition, certain items and most art catalogs are now available at reduced prices. As always, College faculty, staff and students receive a 10% discount.

Ewell Series

Concert Nov. 24 To Feature Williams

The Ewell Concert Series, sponsored by the music department and funded by the Association of Parents, will present pianist Christine Anderson Williams in the fifth concert of the current season at 3 p.m., Sunday, Nov. 24 in Ewell Recital Hall.

Admission is \$2 at the door. W&M students with ID will be admitted free.

Williams is a member of the piano faculty at the College and a frequent performer in both solo and ensemble concerts. She holds degrees from Duke University and the Manhattan School of Music.

Williams' program will include the Sonata in E Major (Hob: 31) by Haydn; Sonata Op. 57 ("Appassionata") by Beethoven; "Ondine" by Ravel; the first Ballade by Chopin; and four piano compositions by Edgar Warren Williams, associate professor of music, which range in date from 1969 to 1985.



Christine Williams

English Department To Sponsor Lecture By Jeffrey Schnapp

The 1932 "Exhibition of the Fascist Revolution" in Rome will be the topic of an illustrated lecture by Jeffrey Schnapp, professor of French and Italian at Stanford University.

Schnapp's lecture on "Epic Demonstrations" will be given at 4:30 p.m., Wednesday, Nov. 20 in the Botetourt Theatre of Swem Library. This lecture is being sponsored by the English department.

In his lecture, Schnapp will discuss the 1932 national exhibition staged by the Fascist government to celebrate the 10th year of its accession to power.

The exhibition was attended by over four million people in the course of two years. It was a collaborative venture featuring the work of avant-garde architects, artists and writers and was intended to serve as the defining moment of a "Fascist Modernism" that would rival both the revolutionary modernism of the Soviet Union and the bourgeois modern-

ism of the European democracies.

Schnapp will draw on a "cultural studies" approach and will appeal to a wide segment of students and faculty, especially those interested in 20th-century or Italian history, comparative literature,

international relations and material culture. The emphasis on Fascist architecture will be of particular interest to people in fine arts.

For further details, please contact Chris Bongie at ext. 13926.

Two Lectures

Women's Studies Speaker Nov. 18 Is Etoori On Women In Higher Education In Africa

Deborah Etoori, currently deputy registrar at Makerere University, Kampala, Uganda, will visit the campus next week as part of a program on Women's Studies in Africa, sponsored by Ohio State University.

Etoori will present two programs on Monday, Nov. 18. She will talk about women in higher education in Africa at a brown bag lunch at noon in Jones 201. She will discuss women's issues in con-

temporary Africa at 4 p.m. in the Reves Room at the Reves Center for International Studies.

Both talks are open to the public.

Etoori has graduate training in education and higher education administration. She is a former secondary school teacher and is actively involved in the National Council of Women in Uganda, the Uganda Association of University Women, and Action for Development.

Ibsen Scholar Will Visit 'A Doll House' Cast, Give Lecture

Rolf Fjelde, an Ibsen scholar, will be on campus to attend the opening performance of Ibsen's play, "A Doll House" by the William and Mary Theatre and will lecture on Ibsen at 2 p.m., Friday, Nov. 22 (location to be announced).

"A Doll House," directed by Jerry Bledsoe, professor of theatre and speech, will be presented at 8:15 p.m. in Phi Beta Kappa Memorial Hall Nov. 21, 22 and 23 and at 2 p.m., Nov. 24.

Tickets are \$5 and may be reserved by calling the PBK box office at ext. 12674.

This is Fjelde's second visit to campus. He also visited in 1979 when the W&M Theatre presented Ibsen's "The Wild Duck."

Fjelde has translated virtually all of Ibsen's works including "Hedda Gabler,"



Rolf Fjelde

"The Master Building" and "Peer Gynt."

Fjelde maintains a busy international lecture schedule while serving as president of the Ibsen Society of America which he founded. He has taught at Yale, Columbia and Juilliard and currently serves on the faculty of the Pratt Institute. In January he was awarded the St. Olav Medal for his important contributions in familiarizing the English-speaking public with Norwegian literature and Ibsen in particular.

During his campus visit he will also meet with the director and cast of "A Doll House," following the Friday evening performance on Nov. 22.

For additional information concerning his visit, please call the theatre department at ext. 12660.

Rublein To Give Lecture For MOST On Shakespeare/Math?

MOST, the Mathematics Organization for Students, is sponsoring a talk, "Shakespeare? Math??" by George T. Rublein, associate professor of mathematics, at 5 p.m., Thursday, Nov. 14 in the Muscarelle Museum.

MOST's flyer describes the program in light of recent occurrences in Williamsburg:

"Codes, cyphers and secret writing have a huge and sometimes racy literature. The work nowadays is the domain of computer scientists interested in complexity theory and mathematicians who do number theory and combinatorial theory.

"The early history, is, however, less mathematically daunting. The speaker will describe the so called biliteral cypher of Sir Francis Bacon. This is an encoding device described principally in one of

Bacon's books, *De Augmentis Scientiarum* (1623). There, Bacon explained how, with the aid of a competent printer, one

could use any 'cover text' whatever to covertly publish some possible inflammatory subtext."

Applications For Head Resident Positions

Applications for the 1992-93 Head Resident position will be available Monday, Nov. 18 in the Office of Residence Life, James Blair 206. An informational meeting will be held that evening at 7 p.m., in Tazewell Lounge. All those interested in applying are urged to attend.

Head Resident positions are open to all students and are not limited to current ORL staff.

Applications are due at 5 p.m., Dec. 3.

For further information please contact the Office of Residence Life at 14314.

*The Society of the Alumni
Proudly Announces*

"Beneath Thy Trees..."

a major new recording celebrating the 300th anniversary of the College by The William and Mary Choir and The Botetourt Chamber Singers

Frank T. Lendrim, Director

- Featuring a wide range of musical selections, from sacred to folk favorites, including the William and Mary Hymn and Alma Mater.
- An all-digital recording, professionally produced to the highest technical standards by Colonial Williamsburg Productions.
- Beneath Thy Trees... available on either compact disc or audiophile cassette.

Proceeds from the sale of this recording will help finance the Choir's tours both in this country and abroad, and programs and publications of the Society of the Alumni.

You can help ensure the success of this important project by ordering today using the order form.

ORDER FORM

Please send me _____ compact disc(s) and _____ audiophile cassette(s)

Name _____ Daytime phone _____

Address _____ Class year _____

The Society of the Alumni will be happy to send recordings as gifts for special occasions.

Please send _____ compact disc(s) and _____ audiophile cassettes as gifts to:

Name _____ Please enclose gift card

For additional gifts, enclose full name and shipping address

Please enclose \$15 for each compact disc and \$10 for each cassette.

Add \$3.50 per address for shipping. Virginia residents add 4.5% sales tax

_____ Payment by check payable to The William and Mary Choir Recording Project

_____ Please bill my _____ MasterCard _____ VISA. Card number _____ Expiration date _____

Signature _____

Return to:
William & Mary Choir Recording
The Alumni Gift Shop
P.O. Box 2100
Williamsburg, VA 23187-2100
Phone 804-221-1170

Monica Potkay To Lecture Nov. 19

Monica Potkay, assistant professor of English, will be the next speaker on the English Club's Speaker Series.

Potkay will speak on "The Eloquent Prostitute: The Medieval Image of the Female Preacher," at 12:30 p.m. in the Honor's Lounge in the basement of Tucker Hall.

A medieval scholar, Potkay has written several articles and given papers in medieval conferences.

Next spring she will deliver a paper, "Natural Law in *The Owl and the Nightingale*," at the Medieval Academy in Columbus, Ohio. She will present a paper titled "Solomon's Wise Virgin in *Sir Gawain and the Green Knight*," at the International Medieval Congress in Kalamazoo, Mich., in May 1992.

She is currently writing a book-length manuscript, "The Artes Praedicandi and Cleanness: The Image and the Word."

Campus Task Force On Hunger Plans Week-long Program Beginning Nov. 17

The William and Mary Hunger Task Force is sponsoring Hunger and Homelessness Awareness Week Nov. 17-23.

Tables will be set up in the Campus Center throughout the week with informational materials concerning issues statewide, nationally and internationally.

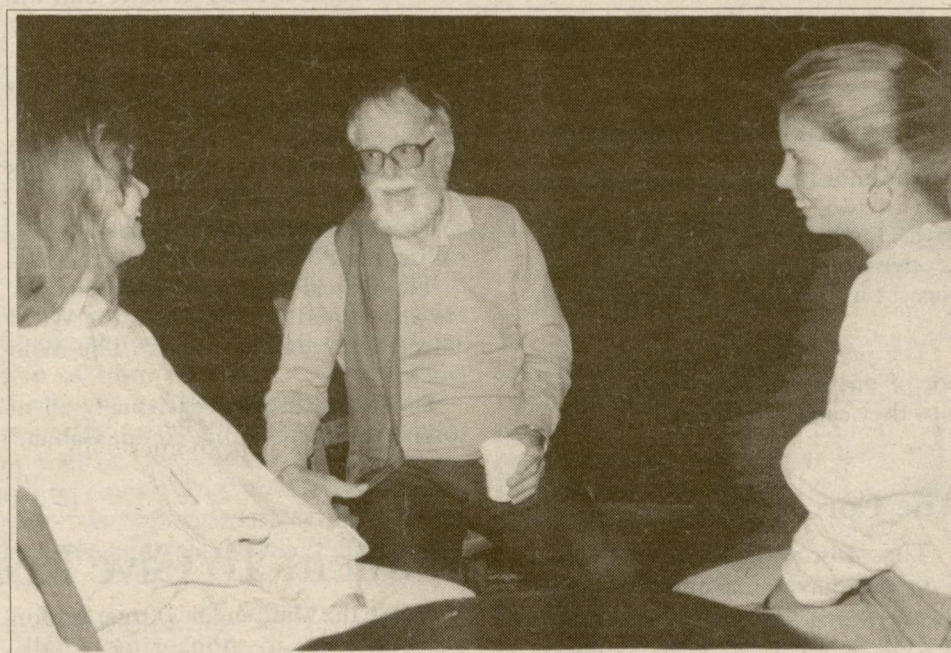
On Thursday, an "Oxfam Fast for a World Harvest" will be held. Those who want to volunteer to fast and anyone wishing to sponsor a participant may sign up at the tables in the Campus Center. All proceeds will go to Oxfam, an international relief organization.

On Friday from noon to 6 p.m., Task Force members will hold a food, clothing and blanket drive on the lawn in front of the Campus Center. Donations of non-perishable food, clothing and blankets are being sought. Baby clothes are also urgently needed.

From 6 p.m. to midnight there will be a vigil with music supplied by campus musicians.

A midnight to 8 a.m. sleepout on the lawn by members of the Task Force is the final event in the week's program.

For additional information, call Anne Turner at ext. 14237.



Left to right, Megan Musgrave, Professor Emeritus Howard Scammon and Cheryl Renee

Scammon Directs Williamsburg Players

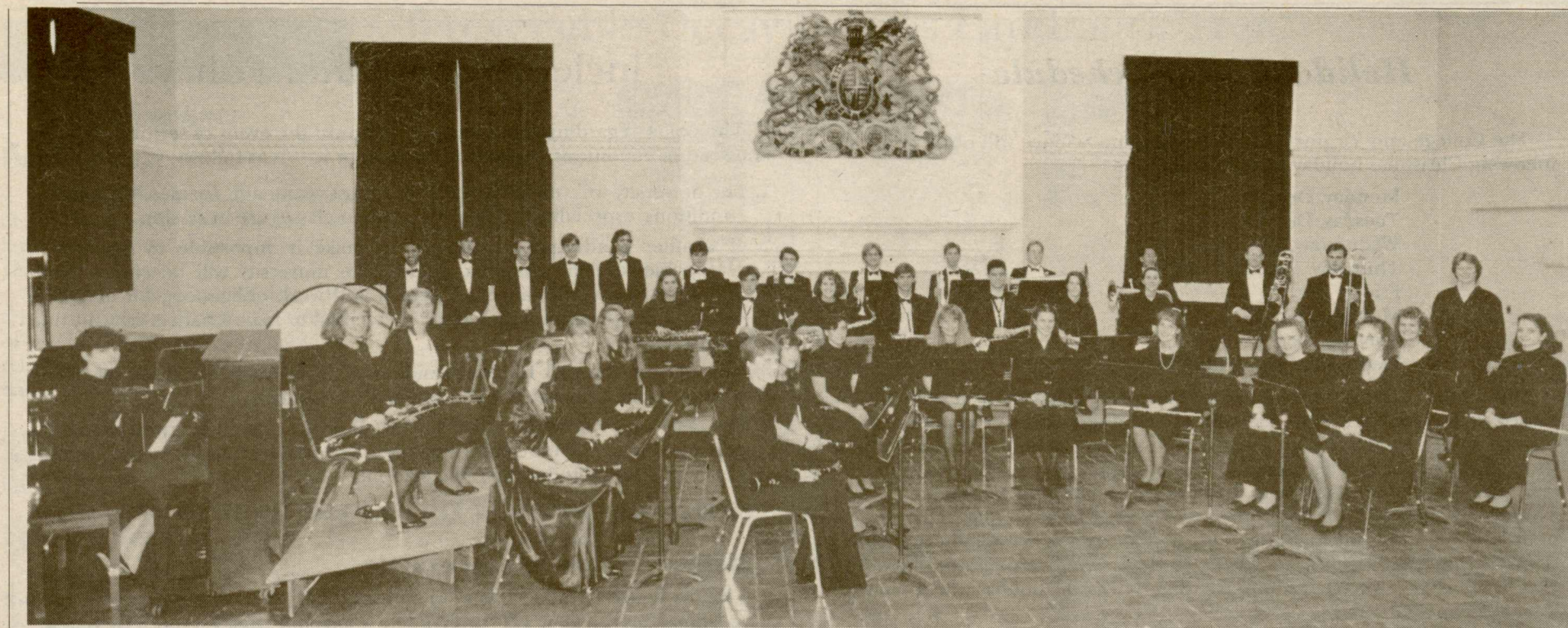
Howard Scammon, professor of theatre and speech emeritus, is directing "Our Town" by Thornton Wilder for the Williamsburg Players.

"Our Town," a Pulitzer Prize-winning play, will be presented at the James-York Playhouse, 200 Hubbard Lane, Thursdays through Saturdays, Nov. 14 through Dec. 14. Performances are at 8 p.m. with matinees at 2 p.m. on Nov. 23, 30 and Dec. 1.

Reservations may be made by calling 220-4379.

Several members of the William and Mary community are assisting Scammon. Karen M. Hardcastle, a senior, is assistant director. In the cast are several students including Emily Roderer, J. Gregory Hodges, Ben Harper Hulsan, Megan Musgrave, Cheryl Renee Jennings, Christopher Wharton and Stuart Ranson. William O. Suber, an alumnus and instructor in English, is also a cast member.

This is Scammon's ninth production with the Players. His first directing assignment for the Players was "The Fantasticks" in 1966.



The William and Mary Concert Band with Conductor Laura Rexroth

Concert Band To Give Performance In PBK Hall Nov. 26

The William and Mary Concert Band, Laura Rexroth, conductor, will give its fall concert at 8 p.m., Tuesday, Nov. 26 in Phi Beta Kappa Memorial Hall.

There is no admission charge. Drawing from all departments and divisions of the College, the Concert Band brings together talented young wind, brass and percussion players to perform wind ensemble and symphonic band music from a repertoire that spans the 16th through the 20th centuries.

The program will feature music by

Leonard Bernstein, William Schuman, Percy Grainger, Ernesto Lecuona, Jaromir Weinberger and Sergei Prokofiev.

The band will open its concert with "Overture to Candide," as a tribute to the late Bernstein. His comic operetta, based on Voltaire's work, premiered on Broadway in 1956. The lively overture has become one of Bernstein's most performed works.

"Australian Up-Country Tune" by Grainger is a slow, wistful melody with simple accompaniment. Grainger said,

"In this tune I wished to voice Australian up-country feelings as Stephen Foster did with American country-side feelings in his songs."

Schuman's "New England Triptych," an instrumental suite, based on three hymns by William Billings (1746-1800)—"Be Glad Then, America," "When Jesus Wept" and "Chester"—captures the spirit of ruggedness, deep religiosity and patriotic fervor of the Revolutionary War era.

March, Op. 99, is one of several original works for winds by Prokofiev. Written

in 1943, this work received its American premiere under the baton of Serge Koussevitzky in 1945.

"Bolero Espanol" is a fiery dance and the first composition for winds by Cuban composer Lecuona, known for bringing Latin-American music to the attention of the world.

The band will conclude with Weinberger's "Polka and Fugue" from the opera "Schwanda the Bagpiper." The opera, based on a Czech folk tale, premiered in Prague in 1927.

Recycling Report Line Established

The Department of Facilities Management has recently established a Recycling Report Line to provide easier reporting of materials independently recycled from campus. The College does not discourage free-lance recycling from campus; however, all materials removed for recycling purposes must be reported.

State mandates require progressively higher percentages of recyclable materials be removed from the total College waste stream each year; therefore, consistent reporting of any material recycled from campus enhances the reporting accuracy to state and local authorities by the College.

Call ext. 12286 to reach the Recycling Report Line.

For additional information, call the Campus Recycling Organization at ext. 1563.

Recyclers Work Hard On Saturday Mornings

Praise an idea and you may be asked to help.

I told a recycling activist the idea of "Faculty Recycling Day" sounded great. "Come join us; see how it works," was the response.

"We hope not to recycle our professors and administrators, but to harness their environmental concern," said my host, Mary Nachtrieb.

First stop was the Campus Center to join the recyclers who awaited orders to either of the two collection points in William and Mary Hall parking lot and Crim Dell, or the truck routes through campus.

My assignment was the William and Mary Hall parking lot. There were about 10 of us there and we took turns with the chores. Some of us were gatherers, taking in the recyclables from residents who drove in, smashing soft drink cans, and sorting paper into piles for white, colored and computer. Then there was the truck crew that put the separated recyclables into the proper bin in the truck.

The truck had a narrow alley down the middle which separated two lines of huge cardboard bins. The recyclers were concerned that they would not fill the truck and would have to settle for a lesser vehicle next time.

During the slack time gatherers chatted about the current state of TV programming and grades. They sat in a circle at one point and gave each other back rubs. A couple of the men had a competition to see who could smash the most aluminum cans with one Rocky pounce.

A donation of doughnuts, courtesy of Kathy O'Neill who heads the recycling

program, was a welcome break in the morning.

There was once a course in garbology offered on campus. It came to mind when the collectors wondered out loud what kind of people put peanut butter jars in the recycling bin without washing them out. Also milk drinkers should know that opening a contributed plastic carton several days after the last glass was poured unleashes a terrible odor. And wine drinkers also please note, wash before you toss.

While most of the physical work in recycling comes from lifting, hauling and dumping things in the right bins, there is a challenge in heaving bottles with enough force to break them.

That morning recycling netted 13 pounds of white ledger paper; 276 pounds of colored paper; 7,840 pounds of newspaper; 546 pounds of aluminum; 1,936 pounds of glass; 194 pounds of cardboard; and 54 pounds of plastic.

Among those working that day were Peter Jones, Ron Fuchs, Cynthia Ghaemmaghani, Charles Neely, David Nicks, Jen Jolly, Andrea Swanson, Wendy Jaskowiak, Mary Nachtrieb, Mehran Mehryar, Daniele Andrews, John Karro, Chris Ibsen, Natalie Webber, Christian Wright, Kathleen Mogelgaard, Kathy McKinney, Marcy Rockman, Melissa Snyder, Vicki Bryan, Jen Zinn, Roland Ramsundar and Alexander Scott.

P.s. Thanks for the invitation—ed.

The recyclers hold comprehensive campus-wide pick-ups each Saturday and have students stationed at Crim Dell and W&M Hall parking lot to receive recyclables from members of the campus community and area residents.

Muscarelle Museum Of Art Hosts Lecture, Receptions



The Muscarelle Museum of Art will host an opening reception from 5:30 to 7:30 p.m., Friday, Nov. 15 for two special exhibitions: "The Rowdy London of William Hogarth" and "1991 Cape Dorset Annual Graphics Collection."

This event is open to the public. There is no charge.

Environmental Lecture

Noel J. Brown, regional director of the United Nations Environment Programme, will speak on "Environmental Concerns of the Arctic: Art is the Window of a Culture" at 7:30 p.m., Tuesday, Nov. 19 in the Newman Auditorium of Andrews Hall.

This lecture is being sponsored by the Muscarelle Museum of Art and is open to the public.

The audience is invited to meet the speaker and noted Inuit artist Kananginak at an informal reception at the Muscarelle Museum following the lecture.

Music at the Muscarelle

The next performance in the "Music at the Muscarelle" chamber music series will be held at 4 p.m., Sunday, Nov. 24 at the museum. The concert is free.

Mozart compositions will be highlighted including, among others, the Serenade No. 12 for Wind Octet and music arranged for flute choirs. The featured performers will be the Gallery Players of William and Mary under the direction of Burton Kester.

Concert patrons are invited to come early to view the two special exhibitions currently at the museum.

Two musical performances will close the fall concert series on Dec. 8.

The Rainbow Connection

The Rainbow Connection, a group of elementary and middle school students under the direction of Genrose Lashinger, a music teacher at Matthew Whaley School, will present a vocal program of seasonal and secular music at 3 p.m., Saturday, Dec. 7. An informal reception will follow.

The Rainbow Connection is an auditioned group of 30 members from middle and elementary schools in the Williamsburg-James City County school division.

As goodwill ambassadors they perform for a wide variety of audiences including members of the Virginia Music Education Association, patrons of the Mariners Museum and several retirement communities.

The group has titled its performance for the museum, "Land of 1,000 Dances," and will sing music popular in the 1950s and 60s. To show their versatility, Connection members will use sign language in one song.

The final fall "Music at the Muscarelle" concert will begin at 4 p.m.

Both performances are free.

Holiday Leave Schedule

The College and Virginia Institute of Marine Science will observe the following Christmas holiday leave schedule:

Monday, Dec. 23
 Tuesday, Dec. 24
 Wednesday, Dec. 25
 Thursday, Dec. 26
 Friday, Dec. 27
 Monday, Dec. 30
 Tuesday, Dec. 31
 Wednesday, Jan. 1 (applied to 1992)

Most of the administrative offices and the plant department (except for those employees required to maintain essential services as determined by management), will be closed. The decision to require employees to work should be made by the dean, director or department head, as appropriate, and should be communicated to the employee(s) as soon as possible.

The names of permanent classified employees who are required to work must be reported in writing to the Office of Personnel Services by Jan. 10 in order that these employees may be credited with compensatory leave. Hourly employees who are required to work during the holiday will be paid their regular hourly rates.

With the approval of management, compensatory leave should be taken as soon as possible after the holiday on which it was earned. Compensatory time not taken within 12 months will be lost.

On behalf of the administration of the university, I wish each member of the College community a safe and enjoyable holiday.

Melvyn D. Schiavelli
 Provost

Observance of Thanksgiving Holiday

The College and Virginia Institute of Marine Science will observe the Thanksgiving holiday on Thursday and Friday, Nov. 28 and 29.

Most of the administrative offices and the plant department (except for those employees required to maintain essential services as determined by management) will be closed. The decision to require employees to work should be made by the dean or director or department head, as appropriate, and should be communicated to the employee(s) as soon as possible. The Campus Police Department will maintain its regular schedule.

The names of permanent classified employees who are required to work must be reported in writing to the Office of Personnel Services by Nov. 9 in order that these employees may be credited with compensatory leave. Hourly employees who are required to work during the holiday will be paid their regular hourly rates.

With the approval of management, compensatory leave should be taken as soon as possible after the holiday on which it was earned. Compensatory time not taken within 12 months will be lost.

On behalf of the administration of the university, I wish each member of the College community a safe and enjoyable holiday.

Melvyn D. Schiavelli
 Provost

Student Affairs Has Applications For Awards/Scholarships

The Office of Student Affairs has information and applications for a number of competitive awards and scholarships. For more information about the following opportunities, call ext. 11236.

USA TODAY's All-USA Academic Team: Competition is open to any full-time undergraduate student with supporting nominations from one faculty member and one administrator. Winning "team" members will be selected for excellence not only in scholarship, but also for leadership on and off campus.

The judges' decision will be based largely on the student's ability to describe in writing only his/her most outstanding original academic or intellectual product.

Applicants must also submit written recommendations. "First Team" winners will receive a \$2,500 cash award at a ceremony in Washington, D.C.

Application deadline is Nov. 30.

St. Andrew's Society of the State of New York Graduate Scholarship: One senior undergraduate student of Scottish descent can be endorsed by President Verkuil to compete for this award for up to \$12,000 to cover tuition costs and other expenses related to graduate study in Scotland. Eligible students must be from Pennsylvania, New York or New Jersey, or any New England state, and

will be chosen on the basis of academic achievement, extracurricular involvements, leadership, financial need and a personal statement.

Application deadline is Dec. 31.

GLAMOUR Magazine's 1992 Top Ten College Women Competition: All full-time junior women are eligible for this award for academic and personal excellence. Winners will be selected on the basis of leadership abilities, personal involvement in community/campus affairs and academic excellence.

Finalists will receive a \$1,000 cash prize, a featured profile in the magazine's October 1992 issue and an all-expense paid trip to New York to attend the awards ceremony.

Application deadline is Jan. 15.

Combined Virginia Campaign



It's not too late to give ...

Inclement Weather Policy

The policy regarding university operations in the event of seriously inclement weather conditions (usually heavy snow or ice) is as follows:

1. The university will remain open under most reasonably foreseeable weather conditions, especially during periods when classes are in session.
2. If weather conditions are such as to make it impossible to maintain a reasonable level of academic activity, the university will be closed. Such announcements will cancel all classes and work obligations for everyone except those personnel identified as essential to maintenance, security and health services.
3. The person charged by the President to make such decisions regarding weather is the Provost. Telephone 221-1993 (office).
4. The decision to close the university in full or in part will be given as soon as possible during the morning (if weather develops overnight) to the Campus Police and to the following radio stations:

Williamsburg—WCWM-90.7 FM, WMBG-AM 740, WPTG-107.9 FM and WDCK—96.5 FM

Hampton—WGH-97.3 FM and 1310 AM

Virginia Beach—WCMS-100.5 FM and 1050 AM

Norfolk—WHR0-89.5 FM; WWDE-101.3 FM and WPEX-1490 AM; WFOG-92.9 FM; WNIS-1350 AM; WNOR-98.7 FM and 1230 AM; WRAP-850 AM; WTAR-790 AM and WLTY-95.7 FM

Richmond—WRVA-1140 AM; WEZS-103.7 FM

Gloucester—WDDY-1420 AM

Among television stations reporting closings will be:

Norfolk—WAVY Channel 10; WVEC channel 13, WTKR channel 3

Richmond—WWBT channel 12; WTVR channel 6; WRIC channel 8

Information on closings may also be obtained by calling 221-1SNO or 221-1766.

5. This policy is understood as affecting the Williamsburg campus only. Microclimate variations and differences in academic functions may occasionally require closure of one or two, but not all three campuses. Such distinctions, if necessary, will be given to the police and the above named radio and television stations and offices.

The following detailed regulations are taken directly from the Commonwealth's "inclement weather policy" and refer to classified employees only, unless otherwise noted.

All-day Closings

- A. Employees absent due to an authorized closing for an entire shift will be paid for such absence. To qualify for such payment, employees must work the scheduled work day before and the scheduled work day after such closing, or work either of such days and be on approved leave with or without pay for the other such work day. Employees absent both of such work days may apply accumulated leave as appropriate to the day of closing if they are otherwise eligible for such leave.
- B. Employees identified by the university as being required to work during such authorized closings shall be referred to as "essential personnel" with respect to this policy. Essential personnel will be credited with compensatory leave for the hours worked during such closing provided they are in occupational classes or positions which are eligible for overtime (non-exempt).
- C. "Essential personnel" required to work in excess of the hours in their normally scheduled shift will be paid overtime for such excess time worked unless compensatory time for those hours can be taken during the same work week.

Partial Shift Closings

- A. When inclement weather conditions result in authorized changes in the work schedule, such as late openings or early closings, employees will be paid for such authorized absences. To qualify for such payment, employees must work all or part of the work schedule not affected by the authorized change.
- B. "Essential personnel" required to work during such periods of authorized closings will be credited with compensatory leave for hours worked during such periods.
- C. "Essential personnel" required to work additional time will be compensated as provided in C above (All Day Closings).

Closings on Employee's Rest Day

Employees whose scheduled "rest day" falls on a day when their work area is closed will not be credited with compensatory leave.

Transportation Difficulties

When inclement weather conditions create transportation difficulties that result in late arrival of employees to work, such lost time need not be applied to leave balances, nor should the employees otherwise experience loss of pay, if in the judgment of the agency head such lost time was justifiable in view of weather conditions.

Hourly Employees

It should be noted that hourly employees may only be compensated for actual hours worked.

Melvyn D. Schiavelli
 Provost

NOTES

Deadlines

Book Award

Entries for the annual Book Award of \$500 offered by the Virginia College Stores Association is due Dec. 15.

The prize will go to an author currently residing in Virginia for a book of outstanding literary, social and intellectual merit published in the calendar year 1991.

Four copies should be sent to Carolyn Taylor, College Bookstore, Mary Washington College, Fredericksburg, VA 22401.

Foreign Service

Applications for the Koenig-Nimmo Foreign Service Scholarship are due Nov. 15. Application forms are available in the government department office, Morton 10.

Short Fiction

Smith-Corona and *Story* magazine have teamed up for the 1991 Short Fiction Competition.

The grand prize is \$500 cash and a new Smith-Corona 8000LT laptop personal word processor.

Details were listed in the Oct. 2 issue of *The W&M News*.

Entries must be postmarked by midnight, Dec. 31 to Story College Short Fiction Competition, 1507 Dana Avenue, Cincinnati, OH 42507

Dec./Jan. Calendar

Items to be included in the December/January Town & Gown Calendar, which will be mailed the last week in November, should be sent by Nov. 20, in writing, to the *W&M News*, James Blair 310, and include the name and campus extension of the contributor.

Drawing Biennial

Entries for the American Drawing Biennial III are due Dec. 16. Over \$3,000 in cash and purchase awards will be offered. Entries should be sent to the Muscarelle Museum of Art. Entry forms are available from the Museum.

Christian Science

The Christian Science Organization will meet Thursday at 5 p.m. in Room D of the Campus Center. The topic will be "The Home."

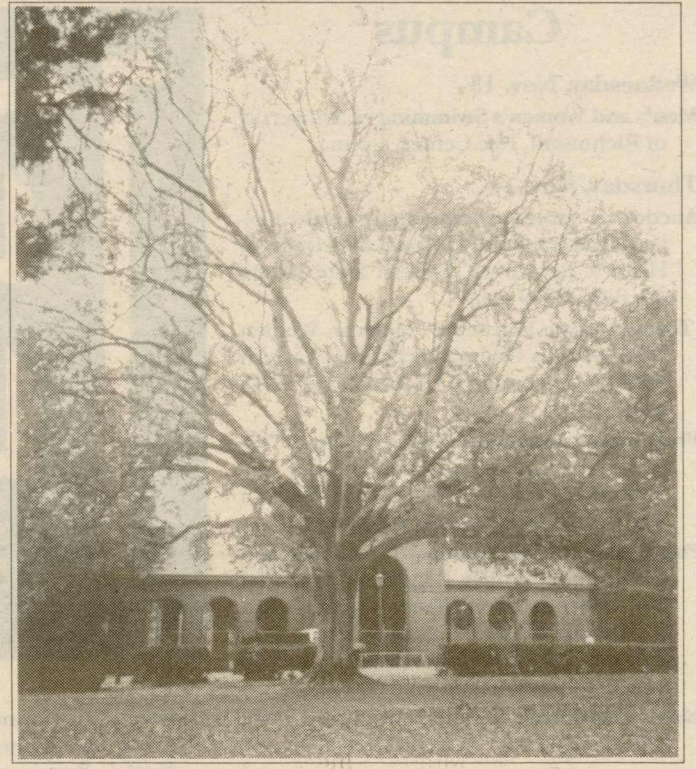
Irreversible Decay Dooms Landmark Tree

A campus landmark, the large beech tree on the lawn in front of the Alumni House, is going to be removed.

The tree has provided the setting for countless reunion pictures and has been an Alumni landmark on campus. Over 125 years old, the tree has extensive and irreversible decay, which was diagnosed by facilities management landscape specialists and confirmed by outside arboriculturists. Because it poses a safety hazard in its current condition, the tree will be removed as soon as possible.



The trunk shows ravages of decay.



The tree as many will remember it.

CLASSIFIED ADVERTISEMENTS

Classified ads are included as a service to members of the College community and will be accepted from faculty, staff, students and alumni only. Ads should be no longer than 40 words and must be submitted in writing to the William and Mary News office no later than 5 p.m. on the Friday preceding the first insertion.

FOR SALE

Sony 70-watt FM Stereo/FM-AM receiver and BSR record changer (no speakers), \$35. Call Cathy at ext. 12362. (12/4)

Jamestown 1607, 3 BRs, 1-1/2 baths, 1,210 sq. ft., all appliances. Pool and clubhouse facilities available. Price \$64,900. Call ext. 12994 (days) or 220-3637 (evenings). (12/4)

1987 Toyota LE van, 7-passenger, dual AC/heat; power locks/mirrors. Excellent condition and well maintained; 37,000 miles. \$8,250. Call ext. 13252 or 220-3698. (12/4)

1984 Honda Accord, 2-door LX, 5-speed, AC, AM-FM cassette, cruise control, power steering and brakes, 102K, new tires, brakes and muffler, excellent condition. \$3,500 or best offer. Call 642-0197 (home) or 642-7219 (VIMS). (12/4)

Two black velour dresses, size 4, removable collars, \$7.50 each. Also red velvet dress, size 3. Call 565-2819 after 6 p.m., Mon.-Fri.; Sat. and Sun., 9-11 a.m. and 5 to 9 p.m. (12/4)

Honda scooter, good condition, runs well, maximum speed 40 mph. Great for campus because you can park anywhere. Will sell with helmet and kryptonite lock. Price negotiable. Call Jon at 221-1208 before 5 p.m. (12/4)

Computer, IBM compatible XT with turbo board, 30 MB hard drive, two 5-1/4" disk drive, color graphics adapter, B&W high resolution monitor or composite monitor that can be used with VCR, Wordperfect and lots of software. \$300. Call 220-2757. (12/4)

Color computer monitor; Tandy CM-5, 14" RGBI, 320 dots x 225 lines. Never used. \$150 (list price \$300). Call ext. 13889. (11/20)

Blue topaz and diamond ring. Two carat oval shaped topaz surrounded by 1/3 carat diamonds in a 14 kt. wide gold setting. Like new condition.

Appraised at \$900, will sell for \$500. Diamond and 14 carat gold bracelet. Alternating hearts in yellow and white gold. White gold hearts are embedded with diamonds. Total diamond weight is 1/2 carat. Like new condition. Appraised at \$1,300, will sell for \$700. Both prices negotiable. Call Debbi at ext. 11778. (11/20)

Kenmore portable electric (110 volt) clothes dryer. \$100. Call 229-7997. (11/20)

Skin-So-Soft oil, 16 oz., \$7.50. Computer, two 512K floppy drives, software and more, \$450 (negotiable). Briefcase, brown, \$15. Brass standing mirror, \$25. Clock radio, GE, \$3. Closet organizers, five for \$1. Call 890-2309 or ext. 12356. (11/20)

Six-month-old Canon Photura automatic camera with original warranty. Brand new model, excellent condition. With special features: 35-105 zoom lens, 3-way autofocus, red-eye reduction, timer and more. Emergency sale. \$200. Contact Mankin, ext. 16186. (11/20)

Singer sewing machine in newly refinished solid mahogany cabinet. Excellent condition, \$175. Both items negotiable. Call Debbi at ext. 11778. (11/20)

1982 VW Rabbit diesel. This one-owner car gets 45 miles per gallon. No rust, recent inspection. Looks good and runs well. \$1,400. Call 229-6521 after 5 p.m. or ext. 13944. (11/20)

Sofa, green and beige, 6 ft. long, comfortable. Good condition, \$65. Call 220-2757. (11/13)

1980, F-100 Ford truck, AC, power steering, new inspection. Good running condition, good tires. \$3,000. Call 229-6438 between 9 a.m. and 2 p.m. or after 5 p.m. (11/13)

Aboveground swimming pool with pump and filter; men's 27", 12-speed touring bicycle; Armstrong flute; solid cherry stereo cabinet. Call 229-7006 after 5 p.m. (11/13)

FOR RENT

Townhouse, ideal for graduate/law students or visiting faculty. Fantastic location, quiet, wooded view, private deck, 2 large BRs, 2-1/2 baths, fireplace, unfinished basement, new appliances. \$610 per month + utilities. Available mid to late Dec. Call 229-1471 and leave message. (12/4)

Jamestown 1607, 3 BRs, 1-1/2 baths, all appliances. Pool and clubhouse facilities. \$575 per month + utilities. Available Jan. 1. Call 220-3637. (12/4)

Townhouse to rent to professor beginning late Dec. Three blocks from campus on N. Boundary St., opposite public library. Call 220-1930. (11/13)

WANTED

Sales help needed. Full or part-time sales positions available. Salary based on enthusiasm and ability. Experience with better quality merchandise preferred. Apply in person to D.M. Williams, Ltd. Merchants Square, or call 220-0457. (11/20)

One female roommate for 3-BR condo on Merrimac Trail. Large bedroom with two closets, plus one walk-in closet. Condo is two stories with large kitchen, fireplace, wall-to-wall carpeting and 1-1/2 baths. Looking for Dec.-Jan. move-in. Call 220-5812 for more information. \$180 plus 1/3 utilities. (11/13)

Organist needed for Grafton Baptist Church. Interested persons may call 898-6412 to request job description and/or mail resume to P.O. Box 980, Yorktown, VA 23692 (11/13)

Small home, furnished, preferably rural setting, for visiting professor here for spring semester (classes begin Jan. 15). Call Fine Arts dept. between 8:30 a.m. and 5 p.m. at ext. 12520. (11/13)

STOLEN

From Camm basement office Oct. 21. Beatles long-playing record clock. Clock face shows The Beatles dressed as matadors. Clock back is a John Lennon tribute. Owner wants it back. Call ext. 12585, Camm basement, room 47. (11/13)

EMPLOYMENT

The following positions at the College are open to all qualified individuals, unless otherwise noted. Visit the Office of Personnel Services, Thiemes House, 303 Richmond Road, for information, a listing of vacancies and application forms, Monday-Friday, 8 a.m. to 4 p.m. Call ext. 13150. All applicants must submit a completed Commonwealth of Virginia Application form to the Office of Personnel Services.

Deadline for applying for the following positions is 5 p.m., Friday, Nov. 15, unless otherwise noted. Postmarks will not be honored.

Housekeeping Worker (Unclassified)—\$4.97 per hour, part time, approximately 30 hours per week. Shift begins 5 a.m. Occasional overtime may be required. #H646 and #H647 Location: Facilities Management.

Secretary (Grade 4)—Entry salary \$13,502. #N065. Location: Athletics.

Program Support Technician (Grade 6)—Entry salary \$16,135. #495. Location: Planning and Budget.

Executive Secretary (Grade 6)—Entry salary \$16,135. #527. Location: VIMS (Planning and Budget).

Power Plant Shift Supervisor B (Grade 7)—Entry salary \$17,639. #241. Location: Facilities Management.

Information Officer A (Grade 8)—Entry salary \$19,283. #N044. Location: Advancement Research.

Laboratory Technician Senior (Grade 5)—Entry salary \$14,760. *Restricted appointment with funding subject to renewal June 30.* #134. Location: VIMS (Biological and Fisheries Sciences). *Deadline Nov. 22.*

Office Services Specialist (Grade 5)—Entry salary \$14,760. #335. Location: School of Business. *Deadline Nov. 22.*

Programmer (Grade 10)—Entry salary \$23,044. #598. Location: Advancement Systems. *Deadline Nov. 22.*

Accounting Manager A (Grade 12)—Entry salary \$27,538. #622. Location: CEBAF (Newport News). *Deadline Nov. 22.*

The following positions are limited to applications from current William & Mary and VIMS employees only:

Housekeeping Lead Worker (Grade 2)—Entry salary \$11,298. #223. Location: Facilities Management.

Utility Serviceman (Grade 3)—Entry salary \$12,351. #130. Location: VIMS (Buildings and Grounds).

Housekeeping Worker (Grade 1)—Entry salary \$10,335. #621. Location: Residence Life. *Deadline Nov. 22.*

Laboratory Specialist (Grade 8)—Entry salary \$19,283. *Restricted appointment with funding subject to renewal June 30.* #135. Location: VIMS (Center for Coastal Management and Policy). *Deadline Nov. 22.*

Marine Scientist Senior (Grade 12)—Entry salary \$27,538. *Restricted appointment with funding subject to renewal June 30.* #226. Location: VIMS (CBNERRS). *Deadline Nov. 22.*

CALENDAR

Campus

Wednesday, Nov. 13

Men's and Women's Swimming vs. University of Richmond, Rec Center, 4 p.m.

Thursday, Nov. 14

Auction of surplus equipment from the College, Eastern State Hospital and Dept. of Historic Resources, Eastern State Hospital, Bldg. 22, 9 a.m.

Town & Gown luncheon: "Mexican Women Who Work as Crabbickers on the Eastern Shore," Leach Pellet, CC ballroom, 12:15 p.m.

Ph.D. oral examination: David B. Opie, "Superconducting Compact Hydrogen Maser Resonator from $YBa_2Cu_3O_{7-x}$," William Small Physical Laboratory, 2 p.m.

Public Policy Colloquium: "Producing and Using Public Policy Education," a panel discussion involving members of the Board of Advisors of the Thomas Jefferson Program in Public Policy, Morton 342, 3:30 p.m.

Men's Basketball, Verich Reps, W&M Hall, 7:30 p.m.

Friday, Nov. 15

Volleyball, W&M vs. Memphis State University, Adair Gym, 11 a.m.

Ph.D. Exam, Richard H. Weening, "Completely Bootstrapped Tokamak," William Small Physical Laboratory, 1:30 p.m.

Chemistry Seminar: "Monolayer Dynamics by Surface Ripplon Scattering" by Hyuk Yu, chemistry department, Univ. of Wisconsin-Madison; Rogers 100, 3 p.m. (Refreshments at 2:30.)

Physics Colloquium: "Solid State Dynamics and Electronic Properties of Pure and Doped C_{60} " by Robert Tycko, AT&T Bell Laboratories, Small 109, 4 p.m. (Coffee in Small 123, 3:30 p.m.)

Psychology Colloquium: "Attachment Theory, Gender, and the Longitudinal Analysis of Couple Development: Two Studies of Undergraduate Couples and Desert Storm Families?" by Keith E. Davis, Psychology department, Univ. of South Carolina, Millington 211, 4 p.m. (Refreshments, Millington 232, 3:30 p.m.)

Reves Hall Council coffee hour: "International Poetry Reading," Reves 1st floor lounge, 5 p.m.

Opening reception for two exhibitions: "The Rowdy London of William Hogarth" and "Cape Dorset Annual Graphics Collection," Muscarelle Museum, 5:30 to 7:30 p.m. Free and open to the public. For information, call ext. 12703.

Saturday, Nov. 16

Comprehensive Recycling program collection, W&M Hall parking lot and Crim Dell amphitheater, 9 a.m. to 1 p.m.

Gifted Learners Classes begin, 9 a.m. to 11:30 a.m.

Children's Art Classes, Muscarelle Museum, 9 a.m. to 12:30 p.m. For further information call ext. 12703.

Volleyball, W&M vs. UVA, Adair Gym, 11 a.m.; W&M vs. Houston, Adair Gym, 7:30 p.m.

Football vs. U. Samford, Zable Stadium, 1 p.m. For ticket information call ext. 13344.

Sunday, Nov. 17

Gallery Talk: Judith Varney Burch, director, Arctic Inuit Art Gallery, will talk about Inuit art, Muscarelle Museum, 3 p.m. Free.

Public meeting: "Poverty and Homelessness—Needs and Responses: An Introduction to Legislative Advocacy," Sue Capers, coordinator of the Virginia Coalition for the Homeless, Wren 301, 3 p.m. For information, call ext. 12725 or 229-8829.

Monday, Nov. 18

Women's Studies brown bag lunch: "Women in Higher Education in Africa," Deborah Etoori, deputy registrar, Makerere Univ., Kampala, Uganda, Jones 201, noon; **talk:** "Women's Issues in Contemporary Africa," Etoori, Reves Room, Reves Center for International Studies, 4 p.m.

Film: "Eleni," Charles Center, Tucker basement, 8 p.m. Free and open to public.

Tuesday, Nov. 19

Paper presentation: "Electoral Politics in the Virginia Southside: Halifax County, 1752-1775," John G. Kolp, assistant professor of history, USNA, Institute of Early American History and Culture, Swem Library, 7:30 p.m.



Lecture: "Environmental Concerns of the Arctic: Art Is the Window of a Culture," Noel J. Brown, regional director of UN Environment Programme, Andrews 101, 7:30 p.m.

Student Recital, Ewell Recital Hall, 8 p.m.

The Gallery Players, Bruton Parish Church, 8 p.m.

Wednesday, Nov. 20

Lecture sponsored by English department: "Epic Demonstrations," Jeffrey Schnapp, professor of French and Italian, Stanford University; Botetourt Theatre, Swem Library, 4:30 p.m.

W&M 20th-Century Music Ensemble, Ewell Recital Hall, 8 p.m.

Thursday, Nov. 21

Town & Gown luncheon: "Attitudes of German Students Toward NATO," Armand Galfo, CC ballroom, 12:15 p.m.

Women's Studies Brown Bag Lunch Series: "Postcolonial Literature," Chris Bongie, literature, Charles Center lounge, Tucker Hall, 12:30 p.m.

Public Policy Colloquium: "Economic Reforms in Eastern Europe," Leonid Hurwicz, department of economics, Univ. of Minn., Morton 342, 3:30 p.m.

W&M Theatre: "A Doll House" PBK, 8:15 p.m.

Friday, Nov. 22

Chemistry Seminar: "Target Specific Drugs: Directing Chemotherapeutics to Tumors" by Ned Heindel, chemistry department, Lehigh Univ.; Rogers 100, 3 p.m. (Refreshments at 2:30.)

Physics Colloquia: "Wormholes" by Matt Visser, Washington University, St. Louis, Small 109, 4 p.m. (Coffee in Small 123, 3:30 p.m.)

Men's Basketball vs. Virginia Wesleyan, W&M Hall, 7:30 p.m.

W&M Theatre: "A Doll House" PBK, 8:15 p.m.

Saturday, Nov. 23

Comprehensive Recycling program collection, W&M Hall parking lot and Crim Dell amphitheater, 9 a.m. to 1 p.m.

Gifted Learners Classes, 9 a.m. to 11:30 a.m.

Children's Art Classes, Muscarelle Museum, 9 a.m. to 12:30 p.m.

Football vs. Richmond, Zable Stadium, 1 p.m. For ticket information call ext. 13344.

W&M Theatre: "A Doll House" PBK, 8:15 p.m.

Sunday, Nov. 24

W&M Theatre: "A Doll House" PBK, 2 p.m.

Ewell Concert Series: Christine Anderson Williams, pianist, Ewell Recital Hall, 3 p.m.

Concert: Gallery Players highlight the music of Mozart, Muscarelle Museum, 4 p.m., Free.

Monday, Nov. 25

Movie: "Blow Up," Charles Center, Tucker basement, 8 p.m. Free and open to public.

Wednesday, Nov. 27-Sunday, Dec. 1

Thanksgiving Break

Saturday, Nov. 30

Comprehensive Recycling program collection, W&M Hall parking lot and Crim Dell amphitheater, 9 a.m. to 1 p.m.

Men's Basketball vs. Navy, W&M Hall, 7:30 p.m.

Monday, Dec. 2

Men's Basketball vs. Davidson, W&M Hall, 7:30 p.m.

Wednesday, Dec. 4

Men's Basketball vs. UNC-Greensboro, W&M Hall, 7:30 p.m.

Movie: "Brazil" Charles Center, Tucker basement, 8 p.m. Free and open to public.

Thursday, Dec. 5

Town & Gown luncheon: "The Philippines Today: Mount Pinatubo, the Presidency and Other Problems," Mario Zamora, CC ballroom, 12:15 p.m.

Public Policy Colloquium: "The Industrial Organization of Health Care," Leonard G. Schifrin, Chancellor Professor of Economics, Morton 342, 3:30 p.m.

Friday, Dec. 6

Chemistry Seminar: (Topic to be announced), Carol Cunningham biochemistry department, Wake Forest Univ.; Rogers 100, 3 p.m. (Refreshments at 2:30.)

Reves Hall Council coffee hour: "Holidays Around The World," Reves 1st floor lounge, 5 p.m.

Exhibits

Muscarelle Museum

Through Nov. 10

"The Buck Stops Here," original oil paintings from the recently published children's book *The Buck Stops Here* by Alice Provensen, on loan from the Henry Feiwel Gallery in New York City.

Through Nov. 10

"African Art: Power, Wisdom and Passages"

Through Nov. 10

"Old Master Drawings from the Herman Foundation"

November 16 through December 15

"1991 Cape Dorset Annual Graphics Collection"

Community

This column is devoted to events in Williamsburg and surrounding areas that would be of interest to members of the College community. We will accept entries, on a space available basis, of concerts, lectures, exhibits and other events open to the general public.

WRL is the Williamsburg Regional Library, located at 515 Scotland St. The Hennage Aud. is located in the DeWitt Wallace Decorative Arts Gallery at the corner of Francis and Henry streets. Prices listed are in addition to regular gallery admission. PBK is Phi Beta Kappa Memorial Hall, located on Jamestown Rd., on the W&M campus.

Colonial Williamsburg

Wren Chapel Recital: organ recital of 18th-century music, Wren Chapel, College of W&M, every Saturday, 11 a.m.

Dewitt Wallace Decorative Arts Gallery

Hours: 10 a.m. to 6 p.m., daily. For information, call 220-7724.

Exhibits: "Mapping Colonial America, 1570-1776," through Feb. 15; "Virginia Furniture," 1689-1820, through Dec. 31, 1992; "Silver Punch Strainers from the John Hyman Collection," through Dec. 31, 1991.

Docudrama: "Worth Fighting For," 30-minute presentation examining the conflicts that arose during Virginia's ratification of the Constitution, Oct. 28 through 31, 2:30 p.m. daily.

Jamestown Settlement

Open daily 9 a.m. to 5 p.m. For information, call 229-1607.

Exhibit: "Images of Earth and Sky," through March.

History series for children: "Birds of a Feather," 1st and 2nd graders, Nov. 16, 9:30-11:30 a.m.; "Hunting Hat," 3rd and 4th graders, 9:30-11:30 a.m., Nov. 23.

On the Hill/Yorktown Arts Foundation, 121 Alexander Hamilton Blvd., Yorktown.

Hours: Monday through Saturday, 10 a.m. to 5 p.m., Sunday, 1 to 5 p.m. For information, call 898-3076.

Exhibit: "Artists as They See Themselves," Main Gallery, through Nov. 14.

Exhibit: "Explorations of Ceramic and Porcelain," Colin Park Gallery, through Dec. 31.

20th Century Gallery

Hours: 11 a.m. to 5 p.m. Tuesday through Saturday; noon to 5 p.m., Sunday.

Exhibit: Watercolors by Gwendolyn Nadara and cyanotypes by Bragg Goodwin, through Nov. 23.

Williamsburg Players

Putlizer Prize-winning play, "Our Town" by Thornton Wilder, directed by Howard Sammon, professor of theatre and speech emeritus, W&M. Performances on Thursdays and Saturdays, Nov. 14 through Dec. 14, 8 p.m., Nov. 23, 30 and Dec. 1, 2 p.m. For reservations, call 220-4379.

Yorktown Victory Center

Hours: 9 a.m. to 5 p.m., daily. For information, call 887-1776.

Tuesday, Nov. 19

Peninsula Women's Network: "Self-Defense Refresher," by Cheryl Wise, Citizens Against Crime, Hospitality House, 415 Richmond Rd., Williamsburg, noon. Make reservations by calling 220-1305 or 220-1323.

Swem Library
Thanksgiving Hours

Tuesday, Nov. 26	8 a.m. to 5 p.m.
Wednesday, Nov. 27	8 a.m. to 5 p.m.
Thursday-Friday Nov. 28-29	CLOSED
Saturday, Nov. 30	11 a.m. to 5 p.m.
Sunday, Dec. 1	1 p.m. to midnight

WILLIAM & MARY
NEWS

The William & Mary News is issued weekly during the school year for faculty, staff and students of the College and distributed on campus Wednesday afternoons.

News items and advertisements should be delivered to the News Office, James Blair 310A (221-2639), no later than 5 p.m. the Friday before publication. Notices for the calendar should be delivered to the News Office no later than 5 p.m. the Wednesday before publication.

Barbara Ball, editor

Marilyn Carlin, desktop publishing

Publications Office, production

News deadline: Fridays, 5 p.m.