



Non-profit Organization
U.S. Postage Paid at Williamsburg, VA
Permit No. 26

WILLIAM & MARY

A WEEKLY NEWSPAPER FOR FACULTY, STUDENTS AND STAFF

NEWS

VOLUME XXI, NUMBER 31 • WEDNESDAY, JUNE 10, 1992

A Collegewide
Farewell Reception
for
Lisa Tumer
assistant director
financial aid office
and
Ginny Winsatt
secretary, financial aid office
4 p.m., Friday, June 26
admissions reception area
Blow Memorial Hall, first floor

Host Families Needed For Visiting Students

Hosts are being sought to share the American family experience with visiting college-aged French students.

Students will be in Williamsburg during the month of July for classes and activities sponsored by the International Cultural Holidays.

For more information call Richard Ambler, 220-3297; or Jack Halverson, 565-1486.

Adair Pool Closed

Due to repairs Adair Pool will not be available for lap swimming or water aerobics this summer. Classes will be held at Eastern State Hospital's outdoor pool in conjunction with ESH's employee CommonHealth program.

Low impact aerobics is being taught Monday and Wednesday from noon to 12:45 p.m. and Tuesdays and Thursdays from 5:15 to 6 p.m. in Adair 103.

These classes are free to CommonHealth members. For those who have not previously attended or are not a member of CommonHealth, please call ext. 12776 to enroll.

Housing Sought

Visiting Australian faculty family needs furnished 2- to 3-BR house/apartment, late Aug. through late Dec. Call Schifrin, 565-3191.

Museum Programs For Children

The Muscarelle Museum will offer children's art classes and workshops July 7-July 30. Registration will be held June 18. For details, call ext. 12703.

"Camp Anticipation" will be held July 27-31 for children 7 to 10, and Aug. 3-7 for children 11-14.

For details call 229-5676 or ext. 12703.

Oxford Press to Publish Center Series

Book by Daniel Cohen
Scheduled for Nov.

Oxford University Press will publish a new series of scholarly works produced through the Commonwealth Center for the Study of American Culture.

The book series, which will be known as the "Commonwealth Center Studies in American Culture," is the most recent activity added to the center's ongoing programs of research fellowships, seminars, colloquia and teaching.

Chandos M. Brown, the center's associate director for programs, said the center's staff will identify the manuscripts for the series and present them to Oxford editors, who will then deal with the author on editing, publishing and distribution.

The series will reveal a strong interdisciplinary approach and focus on research that defines and advances fields of study, said Brown.

The first book in the new series is *Pillars of Salt, Monuments of Grace: New England Crime Literature and the Origins of American Popular Culture, 1674-1860* by Daniel Cohen, the center's first post-doctoral fellow. The book will be out in November.

Cohen completed his two-year term at the center in 1990 and is history professor at Florida International University. His book charts the evolution of crime literature from the Puritan gallows confessions to the sensational genre of trial reporting popular during the early 19th century. At the same time, Cohen relates the literary evolution to the transformation of American cultural values during the nearly national period.

Additional manuscripts under consideration for the book series include works in progress by other research scholars from the center, such as "The Co-Equality of the Sexes: Feminism and the Meaning of Rights in Antebellum America" by Nancy Isenberg, a postdoctoral fellow from 1990-1992; "Edgar Allan Poe and the Masses: The Political Economy of Literature in Antebellum America" by Terence Whalen, a postdoctoral fellow from 1991-1993.

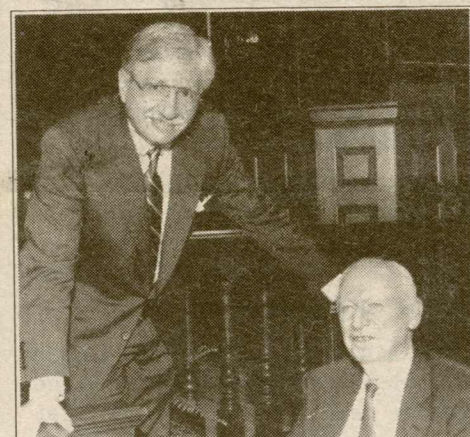
Also under consideration is "American Antebellum Jurists: Their Philosophies and Notions About Proper Conduct" by Brigitte Fleischmann, a senior fellow at the center in 1989 and associate professor at the Amerika-Institut, University of Munich; "Early State Geological Surveys 1823-1860" by William

(CONTINUED ON P.2)



New President Sworn In

Timothy J. Sullivan was sworn in as the 25th president of the College on June 1 in a ceremony held in the Wren Building. The oath of office was administered by J.R. Zepkin, an undergraduate and law school alumnus of the College, and a judge of the general district court for the Ninth Judicial District. Above, Mrs. Sullivan takes part in the ceremony. At right, Sullivan receives congratulations from President Emeritus Davis Y. Paschall.



Williamson Named Acting Law Dean

Richard Williamson, vice dean and Chancellor Professor, has been named acting dean of the Marshall-Wythe School of Law according to Provost Melvyn D. Schiavelli.

Williamson will serve until a permanent replacement is named for Timothy

J. Sullivan, who became the College's 25th president on June 1. A committee to conduct a national search is being formed.

He joined the William and Mary faculty in 1970 and specializes in criminal procedure.

Independence Day Holiday

The College and Virginia Institute of Marine Science will observe Independence Day on Friday, July 3.

Most of the administrative offices and the plant department (except for those employees required to maintain essential services as determined by management) will be closed. The decision to require employees to work should be made by the dean, as appropriate, and should be communicated to the employee(s) as soon as possible. The Campus Police Department will maintain its regular schedule.

The names of permanent classified employees who are required to work must be reported in writing to the Office of Personnel Services by July 10 in order that these employees may be credited with compensatory leave. Hourly employees who are required to work during the holiday will be paid their regular hourly rates.

With the approval of management, compensatory leave should be taken as soon as possible after the holiday on which it was earned. Compensatory time not taken within 12 months will be lost.

On behalf of the administration of the university, I wish each member of the College community a safe and enjoyable holiday.

Melvyn D. Schiavelli
Provost

NEWS

PAGE 3

THEATHEER PAGES

ALUMNI

PAGE 4

Information Sessions
To Be Held On New
Health Care Plan

Virginia Shakespeare
Festival Opens July 3

Public Invited To Hear
Astronaut Reightler
June 19 At Alumni College

NEWSMAKERS

Leadership Conference Draws Students From Campuses Across The Country

Twenty-four black college and university students from predominantly white campuses across the country were on campus in May for an intensive two-week institute designed to increase their leadership skills, visibility and influence.

"The program is based on the premise that leadership skills can be taught," said organizer Carroll S. Hardy, associate vice president for student affairs. "We're providing an avenue for black students to sharpen these skills so they can be more effective leaders on their campuses, in their communities and eventually in the workplace."

Activities for the two-week conference,

May 24-June 6, included a variety of workshops and a three-day trip to Washington for talks with national leaders. Students met with Robert Goodwin of the Points of Light Foundation; Congressman Major R. Owens of Brooklyn; Dr. Carolyn Reid-Wallace, assistant secretary for post-secondary education; Amelia Parker, executive director of the Congressional Black Caucus Foundation; Sen. Charles Robb of Virginia; and Armstrong Williams, a partner in the Graham Williams Group, a leading public relations agency. Guest speaker on June 5 was Barbara Reynolds, an editor of *USA Today*.

President Sullivan Named To Task Force on College Sports

President Timothy Sullivan has been named by Gov. L. Douglas Wilder to a state task force which will study college sports.

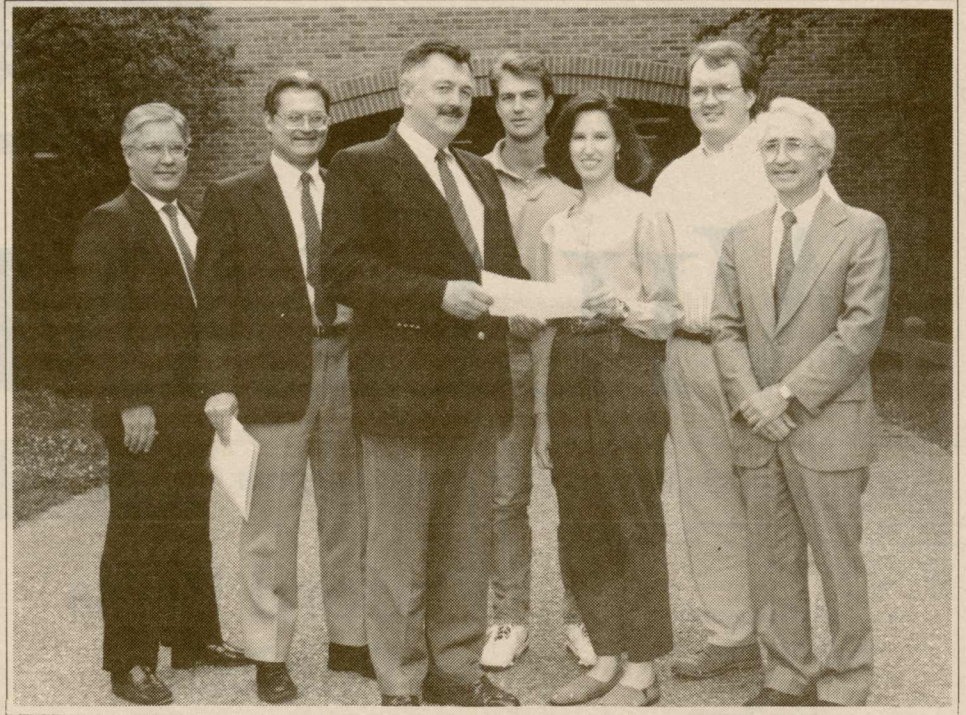
College athletes, coaches and university presidents make up the Task Force on Intercollegiate Athletics, which was formed in response to an athletic loan scandal at the University of Virginia.

The 15-member task force will study financial control of athletic programs, academic performance of athletes and gender equality in sports. The first meeting was held Monday in Richmond.

College presidents on the panel with Sullivan include Harrison Wilson, Norfolk State University; Eugene Trani, Virginia Commonwealth University; James Koch, Old Dominion University; and Belle Wheelan, Central Virginia Community College.

Other members include Zoe Anastas, a female volleyball player at James Madison University; George Lancaster, boys basketball coach at Highland Springs High School, Henrico County; Elizabeth Morie, superintendent of Lexington city public schools; Bob Patterson, principal of William Byrd High School, Vinton, and president of the Virginia High School League; Maurice Scherrens, executive vice president for finance and planning, George Mason University; UVA football player Terry Kirby; UVA women's basketball coach Deborah A. Ryan; Baltimore Orioles Vice President Calvin Hill; Leonard Sandridge, chief financial officer, UVA; and Steve Horton, Virginia Tech assistant athletic director.

Secretary of Education James Dyke will serve as an ex officio member.



Commissioner William A. Pruitt, head of the Virginia Marine Resources Commission, congratulates Wendy Reed, Chris Reed and Jeff Huber for their participation in the Virginia Marine Resources Commission Law and Resource Management Internship Program. Also pictured are: John Levy, professor of law and director of clinical education at the Marshall-Wythe School of Law; Bart Theberge, professor of marine science and chairman of the Department of Ocean and Coastal Law at VIMS and liaison between the law interns and the Virginia Marine Resources Commission; and Robert W. Grabb, assistant commissioner and chief of the Habitat Management Division, Virginia Marine Resources Commission.

Students Recognized For Participation In Marine Resources Management Program

Nine Marshall-Wythe School of Law students have been awarded certificates of recognition for their participation in the Virginia Marine Resources Commission Law and Resource Management Internship Program.

The ongoing internship program is a joint effort among the Clinical Law Program of the Marshall-Wythe School of Law, the Virginia Institute of Marine Science and the Virginia Marine Resources

Commission. Research conducted by interns focuses on current environmental issues facing the marine resource agency of the Commonwealth.

Interns participating in the program are: Susan Barger, Keith Davis, Heather Benjamin, Tom Hanrahan, Jeff Huber, John Maxwell, Chris Reed and Wendy Reed. Law students interested in participating in the program should contact N. Bartlett Theberge at VIMS, 642-1709.

Departments & Schools

School of Business

Wanda A. Wallace, the John N. Dalton Professor of Business Administration and associate dean for academic affairs, attended a meeting of the Financial Accounting Standards Board on April 28 in Norwalk, Conn. On May 11 she presented a paper on "Auditing Complex Accounting Estimates" and participated in the American Institute of Certified Public Accountants' Expectation Gap Roundtable in Charleston, S.C. On May 15, Professor Wallace made presentations on internal controls and analytical procedures to the Birmingham, Ala. Institute of Management Accountants Chapter. On May 20 she attended a meeting of the Government Auditing Standards Advisory Council in Denver, Colo. From May 21 to 22 she attended the University

of Kansas Symposium on Auditing Problems sponsored by Deloitte & Touche, at which she presented a research paper titled "Practical Experiences with Regression Analysis," co-authored with David A. Scott, partner, Price Waterhouse.

School of Education

James M. Patton, associate dean and associate professor, presented a session titled "Philosophical and Theoretical Directions Related to Nurturing the Development of African-American 'Gifted and Talented' Learners" at the annual convention of the Council for Exceptional Children in Baltimore, Md., April 16.

Society of the Alumni

W. Barry Adams, executive vice presi-

dent, chaired a national conference on "Alumni Programs in Capital Campaigns" sponsored by the Council for the Advancement and Support of Education on May 4 and 5 in Pittsburgh. The program focused on involving alumni associations in their institutions' capital campaigns. This is the third consecutive year that Adams has chaired this conference.

Counseling Center

Director **Philip W. Meilman** is the author of "College Health Services Should Promote Good Samaritan Rules as Part of University Alcohol Policies," which appeared in the *Journal of American College Health*, v. 40, May 1992, pp. 299-301.

Meilman is also co-author of *Core Alcohol and Drug Survey User's Manual*, published by Southern Illinois University: March 1992.

'Studies In American Culture'

(CONTINUED FROM P. 1)

Stanton, a senior fellow at the center in 1989 and 1990, and professor of history at the University of Pennsylvania; and "Plotting Manhood: Mark Twain and the Cultural Authority of Authorship" by Richard Lowry, an associate fellow in 1990 and associate professor of English and American Studies.

The most recent manuscript identified for consideration as part of the series is "Regions and Realism: Social Space, Regional Transformation, and the Novel in California, 1880-1939," the dissertation topic of the center's 1992-94 postdoctoral fellow, George Lawlor Henderson.

"Oxford University Press has good visibility in the field, and has gained a tre-

mendous reputation through publishing a wide range of research in American cultural and historical studies," said Thaddeus W. Tate, founding director of the center.

Sheldon Meyer, senior editorial vice president at Oxford, said the center's series "fits well into our editorial program. Indeed, we expect the series to enhance significantly this program."

The Commonwealth Center for the Study of American Culture was founded in 1988 to expand opportunities for the study of American culture and to provide a forum for new American studies scholarship nationwide. As part of this effort, the center sponsors a number of scholars-in-residence who teach and pursue their own research.

Edward Dawson Burrell

Edward Dawson Burrell, 65, of Williamsburg, died May 19 in Williamsburg Community Hospital.

Burrell was a lifelong area resident. He retired in 1987 from the department of transportation at the College after 37 years. He was a member of St. John Baptist Church.

A funeral was held May 23 in St. John Church by the Rev. Dr. Solomon Wesley. Burial was in the church cemetery.

He is survived by his wife, Frances B. Burrell; four daughters, Janet G. White, Fort Eustis; Patty A. Burrell, Williamsburg; Diane Griffin, Richmond; and Carolyn Lester, Fort Riley, Kan.; four sons, George Burrell, Williamsburg; Michael S. White, Nashville, Tenn.; Anthony B. White, Galveston, Texas; and Sheperd White Jr., Monterey, Calif.; 16 grandchildren; one great-grandchild; and a friend and caretaker, Doris Holloway, Williamsburg.

William Thomas Allen

William Thomas Allen, 74, of Gloucester Point, who retired in 1982 as a purchasing agent for the College, died Sunday, June 7. He was 74.

A native of Wakefield, he was a World War II Navy veteran and had lived at Gloucester Point since 1970. He was a member of Bethany United Methodist Church, the Gloucester Kiwanis Club, Achilles Lodge 281, A.F.&A.M., Scottish Rite Temple of Richmond and Acca Shrine Temple of Richmond. Before joining the College staff, he was a purchasing agent at Bellwood Supply Center in Richmond for 30 years.

Survivors include his wife, Katherine T. Allen; a niece and several nephews. Graveside services were held Tuesday, June 9, in Gloucester Point Cemetery by the Rev. Linwood Daniel and the Rev. William Ricketts Jr.

Memorials may be made to the Abingdon Volunteer Rescue Squad, Gloucester Point, 23062; the American Cancer Society, in care of Mrs. G. Edward Mowry, Route 3, Box 279, Hayes, 23072; or the Pastor's Discretionary Fund of Bethany United Methodist Church, Gloucester Point 23062.

NOTES

Swem Goes To The Dogs

The new exhibit opening June 15 in the Zollinger Gallery of Swem Library is "Puttin' on the Dog," featuring selections from the Chapin and Horowitz collections. This light-hearted exhibit has been arranged by Susan Riggs, manuscript cataloger, and Ellen Strong, assistant curator for manuscripts/rare books.

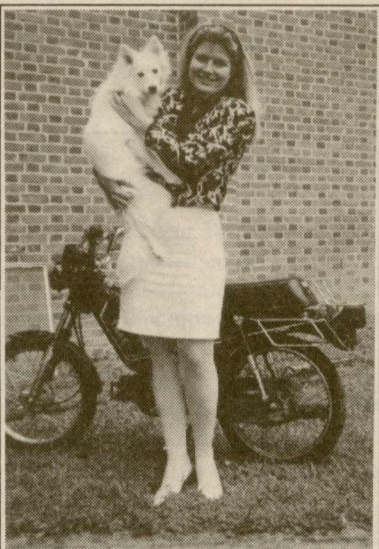
Shown below are photos of faculty and their dogs, which are included in the exhibit. The photographer was Ellen Strong.



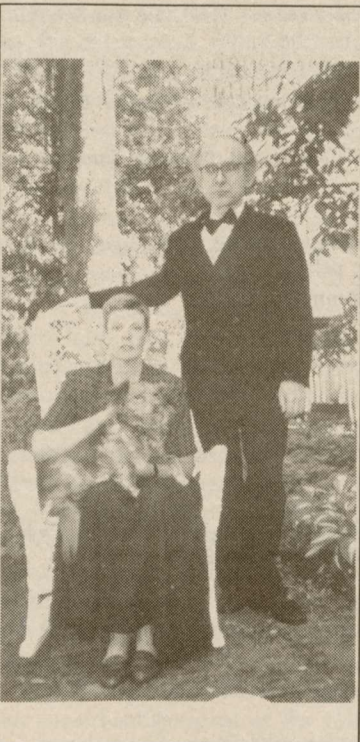
Dale Hoak with Cuddles Molly.



Berna Heyman with Taffy.



Anne Henderson and Calla.



Barbara Watkinson and Hans vonBaeyer with Ted.

Q & A Sessions Scheduled June 17, 25

Benefits Experts To Explain New Health Care Plan

College employees who have questions about the Key Advantage health care plan will have the opportunity to meet with the experts in sessions on both the William and Mary campus and the Virginia Institute of Marine Science campus.

The Williamsburg meetings begin at 10 a.m. Wednesday, June 17, in room 201 of Washington Hall. The session for VIMS employees has been set for 1 p.m. Thursday, June 25, in Waterman's Hall.

The sessions are part of a plan for getting as much information as possible about the changes in the health care plan to College employees, according to President Timothy J. Sullivan.

"We are well aware of the concerns that members of the William and Mary family have about these changes," Sullivan said. "We are working to make sure that we address those concerns directly. William and Mary, like all state agencies, has an important responsibility to serve as an advocate for its employees and as a

liaison with the decision-makers on the Key Advantage plan."

Sullivan said communicating the details of the phase-in to employees will be an important priority until the plan is fully implemented. Information will be communicated regularly through the *William and Mary News*, through the benefits office and through additional meetings, if necessary.

Representatives from Blue Cross and Blue Shield of Virginia, the state Department of Personnel and Training, and the Primary Care Physician network will be available to answer questions about the new plan, which goes into effect July 1.

One-hour sessions have been scheduled for 10 a.m., 11 a.m., 1 p.m. and 2 p.m. in Washington Hall. The VIMS meeting will be a 90-minute session for all employees

Benefits Administrator Rita Metcalfe encouraged any employee with questions

to attend the sessions on June 17. She said the question-and-answer sessions will be especially useful for individuals who are uncertain about the selection of a primary care physician, one of the most important elements in the new plan.

Employees will be given release time from their activities to attend the sessions, said William F. Merck, vice president for administration and finance.

On July 1, the Commonwealth will convert state employees' health care coverage to the Key Advantage health care plan. Rising health care costs prompted the Commonwealth to develop the Key Advantage plan, which is designed to save about \$34 million during the coming year through controlled access to medical services.

About 75 William and Mary employees have completed enrollment forms for the Key Advantage, Sentara and Cigna

CONTINUED ON P. 7.

Employees Enjoy Fair Weather At Annual Picnic

Over 600 persons attended the annual employee picnic which was held in front of the Wren Building Wednesday, June 3. President and Mrs. Sullivan

greeted guests as they arrived at the picnic area and invited people to tour the President's House before they left.

Terry Jones of Facilities Management

served as DJ for the event.

A new addition this year was a raffle. Winners and their prizes were as follows: David Tidwell, Facilities Management, two tickets to any W&M basketball game, donated by Athletics.

Lina Kilmer, Counseling Center, five-\$5 coupons for the Marketplace, donated by Marriott.

Ruth Burse, Housekeeping, A \$50 U.S. Savings Bond, donated by University Advancement.

Mike Stump, Internal Audit, two tickets to any (excluding Homecoming) football game, donated by Athletics.

Kirk Jacobs, Physics, William and Mary sweatshirt, donated by the Alumni Society.

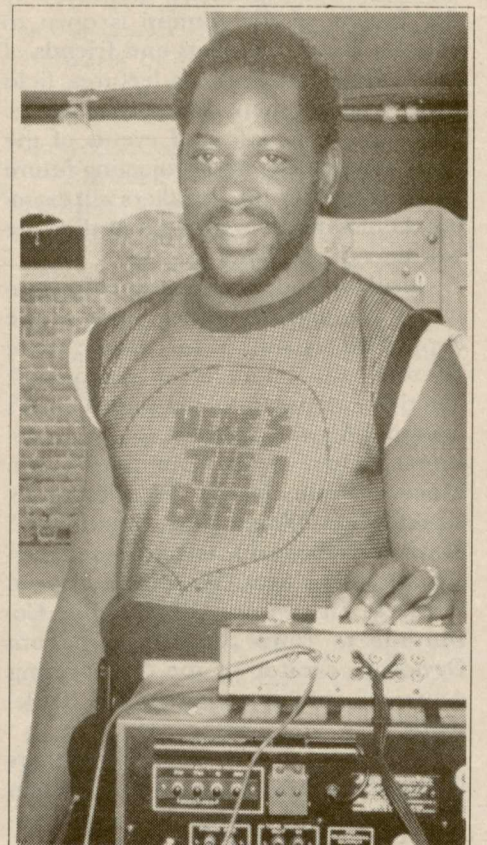
John Wallingford, School of Business, two season passes to Busch Gardens, donated by Tim and Anne Sullivan

Barbara Cyphers, School of Business, a \$50 U.S. Savings Bond, donated by Administration and Finance.

Chris Bracken, University Advancement, William and Mary umbrella, donated by the Society of the Alumni.

Kristy Harris, Campus Post Office, lunch for two at The Trellis, donated by Tim and Anne Sullivan

Grace Roseberry, chemistry, one W&M parking pass, donated by Tim and Anne Sullivan.



Recent Grants

Anthropology

Archaeology Projects Center

Blanton, Dennis B., co-director/research, and **Donald W. Linebaugh**, co-director/administration, "Phase I cultural resource survey of the proposed Route 1 project, Hanover and Caroline Counties, Va." Virginia Department of Transportation, \$4,848.

Blanton, Dennis B., co-director/research, and **Donald W. Linebaugh**, co-director/administration, "Phase II evaluation of site 44RD, proposed Route 3 project, Richmond and Westmoreland Counties, Va." Virginia Department of Transportation, \$871.

Blanton, Dennis B., co-director/research, and **Donald W. Linebaugh**, co-director/administration, "Phase II architectural evaluations of the potential Walkerton Historic District, King William and King and Queen Counties," Virginia Department of Transportation, \$11,064.

Blanton, Dennis B., co-director/research, and **Donald W. Linebaugh**, co-director/administration, "Phase III cultural resource evaluations at six sites along the proposed VNG lateral gas pipeline," Virginia Natural Gas, Inc., \$190,959.

Blanton, Dennis B., co-director/research, and **Donald W. Linebaugh**, co-director/administration, "Phase II Architectural Evaluations of the Potential Opequon Creek Historic District, Frederick County, Va.," Virginia Department of Transportation, \$13,165.

Blanton, Dennis B., co-director/research, and **Donald W. Linebaugh**, co-director/administration, "Phase I Cultural Resource Survey of the Proposed Route 17 Project, Chesapeake, Va.," Virginia Department of Transportation, \$1,272.

Blanton, Dennis B., co-director/research, and **Donald W. Linebaugh**, co-director/administration, "Phase II Evaluation of the Potential Rural Historic District Associated with the GWEN Project, Wythe County, Va.," SRI, International, \$27,506.

Blanton, Dennis B., co-director/research, and **Donald W. Linebaugh**, co-director/administration, "Phase I Archaeological Survey of Property on Fort A.P. Hill, Caroline County, Va.," Metcalf & Eddy, Inc., \$6,489.

Moyer, Curtis, archaeologist, "Conservation of Objects from the Hermitage," The Hermitage, \$1,300.

Biology

Byrd, Mitchell A., professor, and **Bryan D. Watts**, research assistant professor, "Active Land Planning for Chesapeake Bay Bald Eagle Management," Virginia Environmental Endowment, \$15,000.

Chemistry

Abelt, Christopher J., associate professor, "Diversion of Benzophenone Photochemistry to Isotoluene Enol Intermediates," The Petroleum Research Fund, \$20,000.

Kiefer, Richard L., professor, and **Robert A. Orwoll**, professor, "Shielding Materials for Highly Penetrating Space Radiations," National Aeronautics and Space Administration, \$52,803.

Orwoll, Robert A., professor, "Development of Advanced Polymeric Adhesives and Fabrication and Evaluation of Composite Materials," National Aeronautics and Space Administration, \$140,200.

Computer Science

Prosl, Richard H., associate professor, with **Tracey A. Beauchat**, graduate student, "1992-93 Graduate Research Fellowship," Virginia Space Grant Consortium, \$5,000.

Sivertson, W. Eugene Jr., senior re-

search associate, "Virginia Beach Environmental Poster Project," City of Virginia Beach, \$521.

Sivertson, W. Eugene, Jr., senior research associate, "Forest Land Cover Remote Sensing Inventory Maps," Virginia Department of Forestry, \$15,071.

Geology

Macdonald, R. Heather, associate professor, "Writing in Groups: Developing Assignments for Large Introductory Geology Courses," National Science Foundation, \$68,132.

Mathematics

Rodman, Leiba, professor, "Mathematical Sciences: RUI: Problems in Operator Theory and Matrix Analysis," National Science Foundation, \$29,835.

Rublein, George T., associate professor, "Mathematical Sciences: Research Experiences for Undergraduates," National Science Foundation, \$40,000.

Physics

Benner, D. Chris, research associate professor, and **Malathy D. Venkataraman**, research associate professor, "High resolution spectroscopy to support atmospheric measurements," National Aeronautics and Space Administration, \$91,841.

Boozer, Allen H., professor, "Operation Scenario for a Steady-State Tokamak Self-Maintained by the Bootstrap Current," Princeton University Plasma Physics Laboratory, \$15,000.

Champion, Roy L., professor, and **Lynn D. Doverspike**, professor, "Negative Ion Detachment Cross Sections," U.S. Department of Energy, \$104,000.

Koshoni, Doron, research scientist, with **Agus Ananda**, graduate student, "Digital Signal Processing for Quantitative NDE," National Aeronautics and Space Administration, \$19,000.

Sher, Marc T., assistant professor, "Topics in Theoretical Physics," National Science Foundation, \$24,079.

Siegel, Robert T., professor, "Theory of scattering of muonic hydrogen atoms," National Science Foundation, \$34,200.

Sun, Keun Jenn, research scientist, "New Approaches for Ultrasonic Evaluation of Structures," National Aeronautics and Space Administration, \$75,000.

Psychology

Galano, Joseph, associate professor, and **John B. Nezelek**, associate professor, "Drug Abuse Prevention Awareness Study," County of Chesterfield, \$12,367.

Office of the Provost

Scott, Jean A., acting associate provost for academic administration, "Patricia Roberts Harris Graduate & Professional Study Fellowships," \$120,000.

School of Education

Bruno, Donald S., executive director, VUSA, "VUSA Urban Fellows Institute," Chesapeake Public Schools, \$1,600.

Bruno, Donald S., executive director VUSA, "VUSA Urban Fellows Institute," Cities of Hampton, \$800; Richmond \$800; Newport News, \$700; Roanoke, \$175; Virginia Beach, \$175; Fredericksburg, \$175; County of Fairfax, \$2,400; and Joseph McGeehan, \$175.

Bruno, Donald S., executive director, VUSA, "VUSA Urban Fellows Institute," School Board of the City of Charlottesville, \$800.

Bruno, Donald S., executive director, VUSA, "VUSA Urban Fellows Institute," City of Roanoke, \$1,600.

VanTassel-Baska, Joyce, director, Center for Gifted Education, "Developing Language Arts Curriculum for the

Gifted," U.S. Department of Education/Sarasota-Warren BOCES, \$90,000.

VIMS/School of Marine Science

Adams, Aaron, graduate student and **Jon A. Lucy**, marine scientist, "Population structure of Fishes Associated with an Offshore Virginia Artificial Reef," Sport Fishing Institute, \$3,000.

Austin, Herbert, M., professor, **James E. Kirkley**, associate professor, and **William D. DuPaul**, professor, "Estimating the Nature and Extent of By-Catch in the Menhaden Industry," National Marine Fisheries Service, \$43,252.

Anderson, Iris C., adjunct faculty and **Richard L. Wetzel**, professor, "Nitrogen Dynamics in a Salt Marsh," National Science Foundation, \$200,000.

Berquist, C. Richard, associate research scientist, "Investigation of Isolated Sand Shoals and Associated Deposits, Virginian Inner Shelf," Minerals Management Service, \$20,687.

Berquist, C. Richard, associate research scientist and **L. D. Wright**, professor, "Environmental Investigation of Isolated Sand Shoals on the Inner Shelf of Virginia Relative to the Potential for Aggregate Mining," Minerals Management Service, \$105,116.

Brubaker, John M., associate professor, "Hydraulic Control and Two-Way Exchange in the Lower Hudson," Hudson River Foundation, \$27,123.

Buzzelli, Christopher P., graduate student and **Richard L. Wetzel**, professor, "The Effects of Seagrasses on Community Trophic Status near Goodwin Islands, Virginia," National Oceanic and Atmospheric Administration/joint award via the Virginia Graduate Marine Science Consortium and the National Estuarine Research Reserve System in Virginia, \$14,874.

Chittenden, Mark E., professor, "Development of Life History-Population Dynamics Information of Important Fishes of the Chesapeake Bay," U.S. Fish and Wildlife Service, \$130,999.

Faisal, Mohamed, associate research scientist, "Peace Fellowship for Student Academic Support," Republic of Egypt, \$6,000.

Gammisch, Robert A., marine scientist, "Side-Scan Survey of Back River," U.S. Fish and Wildlife Service, \$2,156.

Gammisch, Robert A., marine scientist, "Side-Scan Survey of Gwynn's Island,"

Virginia Marine Resources Commission, \$968.

Graves, John A., assistant professor, "Discrimination of Atlantic and Pacific Blue Marlin by Restriction Fragment Length Polymorphism Analysis of Mitochondrial DNA," National Oceanic and Atmospheric Administration, \$54,795.

Hamrick, John M., associate professor, "Analysis of Currents in the Vicinity of the Proposed New Carrier Pier at Newport News Shipbuilding," Lockwood-Greene, \$35,000.

Hershner, Carlton H., associate professor, "Chesapeake Bay Remote Sensing Accuracy Assessment," Chesapeake Research Commission, \$28,000.

Libelo, E. Laurence, graduate student, "Well Monitoring of Hobbs Property, Ware Neck, Virginia," Environmental Protection Agency, \$940.

Loesch, Joseph G., professor, "Mark and Recapture Studies of the Striped Bass, James River, Virginia," National Marine Fisheries Service, \$50,000.

Lynch, Maurice P., professor, "Graduate and Professional Study Fellowships Program, Patricia Roberts Harris Fellowships—Continuation," U.S. Department of Education, \$16,000.

MacIntyre, William G., professor, "Groundwater Contaminant Research: Retention of Organic Mixtures by Aquifer Materials," U.S. Air Force, \$25,200.

Nichols, Maynard M., professor, and **Gary F. Anderson**, specialist in information management, "Data Base Development for Characterizing Contaminated Sediments in the Chesapeake Bay Region," U.S. Geological Survey, \$35,324.

Orth, Robert J., associate professor, "Inter-Regional Blue Crab Study: Data Management," National Oceanic and Atmospheric Administration/Virginia Graduate Marine Science Consortium, \$8,000.

Perkins, Frank O., professor, "Unexplained Mortalities of Hatchery-Reared Oysters, *Crassostrea virginica*, in the Northeast: Initiation of a Followup Study," U.S. Department of Agriculture/Northeastern Regional Aquaculture Center, \$1,450.

Wright, L. Donelson, professor, "Mississippi River Plume Hydrographic Study," Minerals Management Service, \$118,991.

Goodwin Island Cleanup Continues

By Bland Crowder
Virginia Institute of Marine Science

Part of the trash removed from the Goodwin Islands during a May 9 cleanup included two pieces of red plastic. The pieces had been a posted sign against hunting and trapping which had been ripped in two by a shotgun blast. The national Oceanic and Atmospheric Administration designated the Goodwin Islands as a National Estuarine Research Reserve last June.

The fragmented sign symbolizes the contempt many Virginia citizens evidently have for our fragile estuaries. That contempt was echoed by the 1,780 other

pieces of litter removed from the reserve by members of York County Boy Scout Troop 200 and the U.S. Coast Guard's Marine Science Technician School in Yorktown. The cleanup was coordinated by Chris Goodwin, a junior at Tabb High School, as part of the requirement for the rank of Eagle Scout.

The cleanups are held quarterly and are undertaken as volunteer projects by interested organizations. They are sponsored by the Chesapeake Bay National Estuarine Research Reserve System in Virginia, based at the Virginia Institute of Marine Science, College of William and Mary. The islands are owned by the College.

Workers Sought For Bay Day, June 13

Volunteers are needed for the fourth annual Clean the Bay Day, Saturday, June 13.

The purpose of this event is to pick up trash from the waterfront as well as catalog what is picked up. Data collected is used by the Center for Marine Conservation in lobbying efforts aimed at reducing pollution in the marine environment. For this year's effort, the U.S. Coast Guard at Yorktown will be working with the National Park Service cleaning up the waterfront areas in the Colonial Na-

tional Historical Park.

Volunteers have a choice of two assembling areas, Jamestown Island parking area at the northern end of the Colonial Parkway and the picnic area on the York River below the Victory Statue near the Yorktown Visitor Center. Volunteers are asked to meet at 8 a.m.

Commemorative T-shirts will be available for \$8.

Questions should be addressed to Bland Crowder at 642-7097.

Key Advantage Health Plan Goes On Line July 1

CONTINUED FROM P. 3.

health programs, said Metcalfe. Many employees were "rolled over" into the Key Advantage program and did not have to submit new forms. Approximately 400 employees of the College have named a primary care physician.

Employees and some retirees will be affected by the change in health care programs. (Retirees in Option I and II are not affected by the new plan.)

Some of the more commonly asked questions and answers follow. For more information, contact Rita Metcalfe at ext. 13158 or Brenda Johnson at ext. 13151. Employees can also call Blue Cross and Blue Shield at 1-800-552-2682.

Q. How does Key Advantage work?

A. Each person covered by the plan must choose a primary care physician. Whenever health care is needed, the participant must contact the primary care physician first. To receive the highest level of benefits under the program, contact the primary care physician. The physician can then determine to personally provide the medical services needed, or refer the patient to a specialist or for hospital care.

Q. When do I have to name a primary care physician?

A. The deadline has been extended from July 1 to October 1. But, in order to process the needed paperwork, the College benefits office would like employees to name their primary care physicians by Thursday, Sept. 10.

Q. What if I don't name a primary care physician?

A. Key Advantage will pay more of the allowable claim IF your care is directed by a primary care physician. If you don't name a primary care physician, or if you decide to seek care without seeing your primary care physician first, Key Advan-

tage will pay less of your claim (generally, about 75 percent).

In short, you will likely pay more for medical care if you don't name and use a primary care physician.

Q. How can I find out if my doctor is a primary care physician?

A. You can use two routes: First, check with the benefits office. A list of primary care physicians issued by the Department of Personnel and Training is available there. Second, you can call your doctor and ask if he or she has signed up to be a Key Advantage primary care physician.

More doctors are being added to the

list each month. An updated list of primary care physicians will be issued by the Department of Personnel and Training later this summer.

Q. Are there enough primary care physicians in our area?

A. The Commonwealth is working to increase the number of primary care physicians. Incentives for doctors in rural areas to join the primary care physician network have recently been added. Again, keep in touch with the College benefits office to learn about updates on the number and location of primary care physicians.

Players Forgo I-AA Playoffs

Football Team Going Back To Japan To Play Nippon Univ.

The football team will play Nippon University in Tokyo, Japan in January, the first-ever match up between a U.S. college football team and a Japanese college squad. In 1989 William and Mary played in the first Epson-Ivy Bowl in Yokohama, Japan, where the team played the Japanese College All-Stars.

The contest will be the feature game of a double header at the Tokyo Dome

that will include Ivy League All-Stars versus the Japanese College All-Stars. The W&M team defeated the Japanese College All-Stars in 1989 by a margin of 73-3.

The team will forgo the I-AA playoffs to go to Japan. "We decided to go because we wanted to take advantage of an opportunity to experience a new culture and represent our country," said 1992

tri-captain Palmer Scarritt. "The opportunity to go to Japan was hard to pass up, and we felt, as seniors, that it was worth sacrificing a possible playoff berth next fall.

"The players are very excited about the opportunity to travel to Japan," said head coach Jimmie Laycock, "and they're also excited about the tremendous challenge of coming against the top college team in Japan."

CLASSIFIED ADVERTISEMENTS

Classified ads are included as a service to members of the College community and will be accepted from faculty, staff, students and alumni only. Ads should be no longer than 40 words and must be submitted in writing to the William and Mary News office no later than 5 p.m. on the Friday preceding the first insertion.

FOR SALE

Children's clothes, twins, sizes 5 and 6. Dresses, short, etc. Call 565-2819 evenings after 6 p.m.*

3-BR, 2-bath home on wooded lot, 7 minutes to campus. Low 80s. For information, call ext. 12628.*

Ford LTD, '83 Crown Victoria, V-8, very good condition. \$1,600 or best offer. Call 642-7184 (8 a.m. to 5 p.m.) or 462-0789 and leave message.*

3-BR home in Chanco's Grant. LR, DR, FR with raised hearth fireplace, 2 full baths, attached garage, new deck. Situated on .4 acre wooded lot. Quiet, family-oriented neighborhood. Must sell! Call 220-8266.*

'91 Ford Explorer XLT, 19,000 mi. Beautifully maintained; spotless; scratchless; dentless; AT; AC; 4WD; power brakes, steering, windows and locks. \$17,500. Call ext. 11002 (office hours) or 229-4098 (evenings).*

Boat, Egg Harbor—'37, '61 sport fish. Flybridge, twin diesel, FWC, dual stations, documented. Excellent condition, many extras. \$25,000. Call (804) 285-1255.*

Boy's Fuji 10-speed bike, needs a little TLC, \$75. Call ext. 11184 (days) or 874-3840 after 6 p.m.

Contemporary 3-BR, 3-bath home, located 3 miles from campus on wooded lot; 3-level home with cedar siding, great room with fireplace, 18' cathedral ceiling, 2-car garage, custom leaded glass window and door. \$125,800. Call 220-3861.

'83 Volvo wagon, beige GL240, automatic transmission with overdrive lockout, power steering and brakes, AM-FM stereo with tape player, air-conditioning. Very good condition inside and out. \$3,000. Call ext. 12002 (days) or 229-0385 (evenings).

3-BR, 2-bath house, sunken living room with fireplace, dining room, kitchen with family area, garage, roofed shed and deck. Call 564-1960.

30' Terry trailer at oceanside park in Nags Head. Sleeps four. Electric water heater, deck, cable hookup, phone jack. Very clean, attractive, very well maintained. Great affordable vacation getaway. \$3,500. Call 229-2550.

Printer, Citizen 5800, 9-pin dot-matrix. Excellent condition. \$95. Call 642-7044 or 851-7724.

Comfortable family home in Williamsburg: 11-room colonial, 4 BRs plus study, 2-1/2 baths, living room, dining room, family room, spacious kitchen, airy great room with skylights, well-designed laundry room, screened porch overlooking the woods, detached work room. Fruit trees and a prosperous garden. \$103,900. Call 253-7600.

Two antique quilts in good condition. One hand-embroidered, \$150; the other, \$100. Call 253-1596 after 4 p.m.

Dorm fridge, Sanyo; Toaster oven/broiler, \$15; love seat, \$50; end tables (2 matching), \$10 each; upright vacuum, Kenmore, \$25. Call 220-9189.

Contemporary home on quiet cul-de-sac only minutes from W&M and CW. 4 BRs, 3 baths, full basement, one balcony and a deck overlooking large, undisturbed woods. House has many dramatic features, wonderful privacy, in great neigh-

borhood. \$144,900. Call 229-4862.

Guitar, acoustic, Yamaha, with case. Excellent condition. \$200. Call 229-5268 after 5 p.m.

Home in beautiful Queens Lake, 4 BRs, 2-1/2 baths, fireplace in living room, 2,581-sq.-ft. living space. Clean electric heat and AC. Nice lot, quiet cul-de-sac. Queens Lake club facilities nearby. Large family room with large portrait window overlooking wooded ravine. Delightful screened porch. Priced to sell at \$199,500. Please call 229-0057 for appointment.

1987 Mazda B2000 LX pickup truck, 5-speed, power steering and brakes, AC, AM/FM radio, bedliner. New inspection, excellent condition inside and out. \$3,600. Call ext. 12394 (days) or 875-1308 (evenings).

1991 Mitsubishi Mirage, automatic, red, AM/FM stereo, AC. Only 20K miles, excellent condition, warranty left. Available mid-June. \$7,000. Call 229-4632 after 5 p.m.

White GE, 17 cu. ft. refrigerator, \$150. White Whirlpool dryer, \$100. Call 229-2712.

Piano, Baldwin acrosonic spinet. Excellent condition. \$1,495. Call 898-6098 after 5 p.m.

FOR RENT

Beautiful and clean 3-BR, 2-story house for rent. Close to W&M and shopping. Very nice neighborhood and schools. \$900 per month. Yearly lease. No pets. No smokers. Call 220-8870 or 1-410-750-6687.*

3-BR, 2-1/2-bath townhouse, partially furnished, central AC, electric heat, new carpeting, all appliances, 4 miles from campus. No pets. Faculty or graduate students only. \$575 per month. Avail July 1. Call 229-0556.*

Brick rancher, 2,100 sq. ft.; 3 BRs, 2-1/2 baths, fireplace in living room; 500 sq. ft. family room with wood stove, garage, oil hot air heat, central AC. 100' bulkheaded waterfront, dock, 5' at mean low water (MLW). Sensational view from family room. \$1,000 per month. Avail Aug. 1. Call Chris or Pam Wild at 898-4935.*

Vacation cottage, Nags Head MP6, west side of bypass. Enjoy summer at the beach! 2 BRs, sleeps 4. Central heat and AC, washer/dryer, microwave, 2 cable TVs, VCR and phone. Summer rates, \$350 per week; will rent 3 nights if available, \$50 per night. Families only. No pets. Call Betty Jo at ext. 13433 (days) or 566-1075 (evenings).*

Furnished room: use of desk, kitchen facilities/microwave, living area with cable TV, VCR, linens, washer/dryer. 30 min from campus, possible carpool. Avail. immediately, lease neg. \$325 per month, utilities included. One month's rent deposit required. No pets/smoking. Call 890-2309 or ext. 12356.*

To share: 3-1/2 room Peppertree condominium. Prefer grad student. Own BR; kitchen with dishwasher and washer/dryer; large living room, furnished. \$250 per month plus 1/2 utilities, possible lease. Share with alumnus for summer or longer. Call Peter at 229-8779.*

Summer sublet: partially furnished house, 2

BRs, 1-1/2 baths, 4 miles from campus off Jamestown Rd. Quiet street, 1-acre wooded lot. \$410 per month plus deposit (utilities included).

Looking for last-minute summer housing? We're looking for a female to share a double in a beautiful house on Griffin Ave. (very close to campus). \$192 per month + utilities. Call Karen or Mary, 220-9281.

3 BRs, 2-1/2 baths, fireplace, washer/dryer, microwave, living room, dining room, plenty of closet space, storage, deck, near campus. Off Jamestown Rd. in beautiful James Square. Ready to rent by first week in June. For more information, call ext. 12915 (days) or 245-5181 (evenings).

Available July 15-June 30, 1993: large, furnished, 3-BR tri-level home on 1-acre wooded lot in quiet neighborhood convenient to campus (2 miles) and shops. Living room with wood-burning fireplace insert, dining room, recent remodeled kitchen, study, family room, 2 baths. Large screened porch and deck. No pets or smokers, please. \$800 per month + utilities. \$400 damage deposit. Call ext. 12002 (office) or 229-0385 (home).

Outer Banks family vacation home (north of Duck): 5 BRs, sleeps 12. Three tiled full baths (2 whirlpools). Central AC, heat, microwave, dishwasher, washer/dryer, TV, VCR. No smoking or pets. Excellent ocean view, 200 yards to beach, tennis. \$1,080 per week. Off-season rates also available. Call ext. 13889.

Furnished room with private bath. Kitchen, washer/dryer privileges in townhouse in secured area with other amenities. Ten-minute drive to campus. Available June 20. Female graduate student/professional only. \$325 per month (utilities included). Call B.A. Wallace at ext. 11038 (9 a.m. to 5 p.m.) or 229-3214 (evenings).

Free room in exchange for up to 20 hrs. child care for happy 1-year-old. Furnished 2-room suite with bath. House in woods overlooking tidal creek off Lake Powell Rd. Pleasant 3-mile bike ride to campus. Call 220-8096.

For next fall—self-contained, furnished apartment located between College and law school. Most reasonable rent for right person. Call 229-6422.

Cottage near Williamsburg Crossing Shopping Center, 2 miles from campus. Nice neighborhood. Flexible lease possible. \$325 per month. Call 229-7241.

WANTED

Roommate wanted to share 2-BR townhouse at Jamestown 1607 with graduate history student. \$275 per month plus 1/2 utilities. Call Poul at 229-8622 evenings.*

Looking for roommate to share 2-BR apartment located at Stratford Apts. \$191 per month + utilities. Call Erica at 565-4773. Available '92-'93 school year or longer. Available Aug. 15.*

Piano accompanist for ballet classes at Mansur Kamaletdinov School of Ballet, Kingsmill Shops. Approximately 3 hours per day, June 21-July 31. Call 229-0617.*

Non-smoking, bookish physics major seeks a room in the country with a family for school year. Cats, nice dogs and smoking OK. Heavy drinkers NOT OK. Mail Andrew LaRoy, 12821 Bailey Bridge Rd., Midlothian, VA 23112 or call 739-2779.*

Loving and caring sitter sought for 3-1/2-year-old, beginning Sept., your home or mine. Must be able to pick child up from pre-school Tuesday, Wednesday and Thursday mornings. Prior experience, references and excellent driving record required. Call ext. 11184 (days) or 874-3840 after 6 p.m.

Small apartment or share a home, within walking distance to campus or convenient to public transportation. Oct. 25 through Feb. 9 for young, visiting New Zealand female librarian. Contact Swem Library administration, ext. 13055.

Summer child care needed for 3 children, ages 9, 7 and 4; June 15 through Aug. 28, part time, 20 hours per week, flexible daytime schedule. Must have car. Call 220-0948.

SERVICES

Child care. Also willing to teach ballet and swimming and tutor. Call Nicole, 253-7558.

FOUND

Prescription glasses on Richmond Rd. Call 229-7573 to identify.*

MISCELLANEOUS

Visiting scholar at William and Mary available to house sit for 1992 fall semester. Non-smoker. Excellent with dogs and cats, very good with plants. References available. Call Commonwealth Center at ext. 11270.*

EMPLOYMENT

The following positions at the College are open to all qualified individuals, unless otherwise noted. Visit the Office of Personnel Services, Thiemes House, 303 Richmond Road, for information, a listing of vacancies and application forms, Monday-Friday, 8 a.m. to 4 p.m. Call ext. 13150. All applicants must submit a completed Commonwealth of Virginia Application form to the Office of Personnel Services.

Deadline for applying for the following positions is 5 p.m., Friday, June 12, unless otherwise noted. Postmarks will not be honored.

Police Communications Operator (Unclassified)—\$7.76 per hour, will work on an as-needed basis. Shift may include evenings, nights, weekends and holidays. #H341. Location: Campus Police

Executive Secretary (Grade 6)—Entry salary \$16,135. #448. Location: VIMS (Dean/Director's Office).

Secretary/Office Manager, Court of Appeals of Virginia—\$9.08 per hour, part-time, approximately 25 hours per week, some scheduling flexibility. No employee benefits. Location: Court of Appeals of Virginia (Marshall-Wythe School of Law). *Deadline June 19.*

CALENDAR

First Performance July 3

Virginia Shakespeare Festival Selects Michie To Play Macbeth

by Poul Olson
VSF Promotions Manager

Seasoned Shakespearean actor William Michie, will assume the title role in this summer's Virginia Shakespeare Festival production of "Macbeth." He replaces Steven Culp who was originally cast in the role but had to decline due to a scheduling conflict.

Michie, who has appeared in a number of New York Shakespeare productions, participated in both the 1987 and 1988 Virginia Shakespeare Festivals. His most noted roles include Edgar in "King Lear," Stephano in "The Tempest," Caesar in "Antony and Cleopatra" and Ephraim Smooth in "Wild Oats."

Most recently, Michie appeared as Proteus in the Arena Stage rendition of "The Two Gentlemen of Verona" and Mercutio in the Acting Company's version of "Romeo and Juliet."

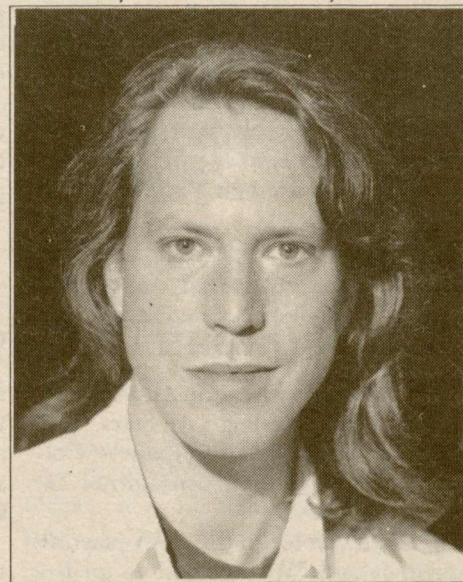
The six-foot-one, blue-eyed, brown-haired Michie says Macbeth has been a role that he has always wanted to pursue.

"The subject of Macbeth is unique among Shakespeare plays," he says. "It is a story of what it is to be human as opposed to being inhuman."

"Once Macbeth kills the king, he has to decide how to deal with it. He certainly makes all the morally wrong

choices, and also the most self-destructive ones."

Michie believes Macbeth becomes a "conscious monster" as he destroys his humanity and kills many innocent



William Michie

people.

Describing "Macbeth" as Shakespeare's version of a horror film, Michie attributes the play's traditional popularity to those elements that have always attracted mainstream audiences: "sex,

violence, and special effects." "The supernatural stuff in Macbeth makes the play a lot of fun," he says.

Pacing the room, Michie searches for his thoughts. He is an actor who strives to understand completely the characters he portrays.

"I couldn't have played this role five years ago, because I wouldn't have understood him as well," he says. "Now with my own life experiences, I think I can understand the role better."

The only equity actor in the Virginia Shakespeare Festival, Michie is eager to work with the company's "young, eager, and unjaded" student actors. "This is a dream job... a vacation for me," he says. "It's wonderful to work in a town with trees, clean air and friendly people."

J. H. Crouch, founder of the Boulder, Colorado, Shakespeare Festival, will direct this year's production of "Macbeth."

Michie, 33, is a native of Omaha, Nebr. He holds a master of fine arts degree in acting from Southern Methodist University and a bachelor of arts degree in English from Macalester College in St. Paul, Minn. In 1984 he studied the Suzuki Method of acting in Togamura, Japan.

During its fourteen seasons, the Virginia Shakespeare Festival has developed a kind of multi-generational family of actors, directors and support staff. This

year's festival, which begins July 3, is no exception.

J.H. Crouch, founder of the Colorado Shakespeare Festival in Boulder, will direct this year's production of "Macbeth." Crouch's participation is a reunion, since he was once the instructor of Festival Executive Director Jerry Bledsoe.

"We are very fortunate to have Jack here this year," said Bledsoe. "He is a distinguished director of Shakespeare's plays in America, and has vast knowledge of and experience in staging Shakespeare's works."

Bledsoe has passed much of what he learned from Crouch on to his own students. Among his students involved in this year's production are David Dudley, technical director and production manager, and Tric Wesp, production designer. Both studied under Bledsoe in the middle 1970's and are now part of the theatre department's faculty.

This year, two of Dudley's and Wesp's students are included in the festival staff: Esther Huffman, a production intern, and Don Hill, master carpenter.

The festival opens July 3 at 8 p.m. with "The Two Gentlemen of Verona" and concludes Sunday, July 26. The first performance of "Macbeth" begins Friday, July 10 at 8 p.m. For ticket information call the box office at ext. 12674.

Other Coming Campus Events

Thursday, June 18 through Sunday, June 21

Alumni College: "Explorers and Their Frontiers: 500 Years of Discovery," Call ext. 11174.

Friday, July 3 through Sunday, July 26

Virginia Shakespeare Festival: Performances of "Two Gentlemen of Verona" and "Macbeth," PBK, Tuesdays through Saturdays, 8 p.m., Sunday matinees, 2 p.m. Note: Special holiday matinee, July 4, 2 p.m.; theatre "dark" on July 7. Tickets: \$10, discounts for groups of 20 or more. Box office opens June 9, call 221-2674. For general information, call 221-2660.

Saturday, July 4

Society of the Alumni, 150th birthday celebration, Alumni House lawn, 3 to 6 p.m. For information, call 221-1173.

Williamsburg Community Hospital Auxiliary Ice Cream Social, Wren Yard, 6 to 8 p.m.

Monday, July 6

Summer Session II begins

August 27

Classes Begin

Exhibits

Muscarella Museum

Through July 5

Karel Appel: "Cats, Dogs and Flying Fish"

Through August 16

"Southern Quilts: A New View"

Community

This column is devoted to events in Williamsburg and surrounding areas that would be of interest to members of the College community. We will accept entries, on a space available basis, of concerts, lectures, exhibits and other events open to the general public.

Wren Chapel Recital: organ recital of 18th-century music, Wren Chapel, College of W&M, every Saturday, 11 a.m.

Bruton Parish Church by candlelight every Tuesday and Saturday, during May, 8 p.m.

Colonial Williamsburg

DeWitt Wallace Decorative Arts Gallery

Hours: 10 a.m. to 6 p.m., daily. For information, call 220-7724. Exhibit: "Images of Nature, Creations of Man: Natural History and the Decorative Arts," through June 1993.

Jamestown Settlement

Open daily 9 a.m. to 5 p.m. Call 229-1607.

Exhibit: "Discovering America," opening June 15 at Jamestown Settlement (through March 15, 1993). Planned in conjunction with the 500th anniversary of Columbus' initial landfall in the New World, the exhibit will acknowledge the significance of the Columbus "discovery" in introducing the "new" world to the "old." Claims of Asian, African and European contact with the Americas before the voyages of Christopher Columbus will be examined. Admission: \$7, adults; \$3.50, children (6 through 12). For more information, call 253-4838.

On the Hill/Yorktown Arts Foundation

121 Alexander Hamilton Blvd., Yorktown.

Hours: Monday through Saturday, 10 a.m. to 5 p.m., Sunday, 1 to 5 p.m. Call 898-3076.

20th Century Gallery

Hours: 11 a.m. to 5 p.m., Tuesday through Saturday; noon to 5 p.m., Sunday.

Yorktown Victory Center

Hours: 9 a.m. to 5 p.m., daily. Call 887-1776.

Exhibits and films: Yorktown's role in the American Revolution; "The Road to Yorktown" (film); and the "Witnesses to Revolution" gallery. A new section of the gallery focuses on African-Americans' participation in the Revolution. Exhibit: "The American and British Foot Soldier, 1775-1785."

Travelers Offered Bargain Rate

Professor Eric Ayisi To Lead Three-Week Trip To South Africa

Eric Ayisi, associate professor of anthropology, has arranged a three-week trip to South Africa, July 23-Aug. 14 at the bargain price of \$3,150 per person, double occupancy (singles, add \$500).

Included in the fee: roundtrip international airfare via South African Airways from New York, two internal flights, air taxes; hotel accommodations for 19 nights in South Africa; daily breakfast and two dinners; transfers and portage at airports and hotels; entrance fees to sightseeing venues, transport in private touring vehicles with English-speaking guide in each locale. The trip begins with an overnight flight from New York to Johannesburg with a connecting flight south to Cape Town. The tour will include the following sites:

Stellenbosch, the oldest Afrikaner

university in South Africa, and a guided tour of the South African Parliament in Cape Town.

Zululand.

Durban, oldest English town in South Africa.

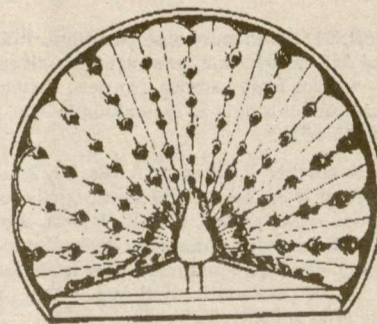
Kruger National Park, a huge game preserve larger than the state of Virginia.

Pretoria, legislative and executive capital of South Africa.

Johannesburg, largest city in South Africa.

Travelers will need a passport valid six months after return to the U.S.A. A visa is required to enter the Republic of South Africa, and the tour office will obtain these for tour members.

For details, call Barbara Schlegel at 220-1426.



Ash Lawn-Highland

Summer Festival 1992

Conveniently located off Interstate 64 and Route 20, 2-1/2 miles beyond Monticello, on county road 795, Charlottesville, Va. Open daily 9 a.m. to 6 p.m. (March through Oct.) Call (804) 293-9539.

Music at Twilight: Entering its fourth season, the Ash Lawn-Highland Music at Twilight series continues. From June 17 to July 22, the series, under the tent, will present a potpourri of traditional and contemporary music.

June 17 - Marching to Zion, featuring Barbara Edwards and the Mt. Zion Baptist Choir under the direction of Jonathan Spivey.

June 24 - 95 Minutes from Broadway - Dorothy Kingston and David Troup with hits from American musicals.

July 1 - Hellbenders - bluegrass, traditional country music.

July 8 - James Gates Ensemble - jazz.

July 15 - The Summer Festival Opera Company presents "Amore" an evening of Italian opera.

July 22 - Robin and Linda Williams - traditional mountain music.

Admission is \$9 for adults, \$8 for seniors, and \$5 for students. Concerts begin at 8 p.m. Reserved picnic suppers will be available at 7 p.m. For details call (804) 293-9539.

Opera Season: Mozart's "The Marriage of Figaro," Rodgers and Hammerstein's "Oklahoma" and Strauss's "Die Fledermaus"; June through Aug. in the Boxwood Gardens (weather permitting, under tent in event of rain), 7 p.m. Picnic suppers available during 45-minute intermission. For schedule and tickets, call (804) 293-4500, 10 a.m. to 5 p.m. For picnic suppers, call (804) 296-5496 by 12:30 p.m. the day of performance.

WILLIAM & MARY NEWS

The William & Mary News is issued weekly during the school year for faculty, staff and students of the College and distributed on campus Wednesday afternoons.

News items and advertisements should be delivered to the News Office, James Blair 310A (221-2639), no later than 5 p.m. the Friday before publication. Notices for the calendar should be delivered to the News Office no later than 5 p.m. the Wednesday before publication.

Barbara Ball, editor
Marilyn Carlin, desktop publishing
Publications Office, production
News deadline: Fridays, 5 p.m.