



WILLIAM & MARY

A WEEKLY NEWSPAPER FOR FACULTY, STUDENTS AND STAFF

NEWS

VOLUME XXII, NUMBER 4 • WEDNESDAY, SEPTEMBER 9, 1992

Invitation

Members of the College community and the general public are invited to attend the dedication of the Lettie Pate Whitehead Evans Residences and the Spalding Gardens at 3:30 p.m. Friday, Sept. 11.

The new graduate housing complex is on South Henry Street adjacent to the Marshall-Wythe School of Law. Tours of the complex and its gardens will be given after the dedication ceremony. About 250 students live in the 85 colonial style apartments, which opened two weeks ago in conjunction with the fall school term.

The complex is being named for the late Lettie Pate Whitehead Evans, a Virginia native whose foundation has supported educational programs at the College.

REMINDERS

Key Advantage Forms Due by Thursday

Primary Care Physician (PCP) forms are due in the Personnel Office by Thursday, Sept. 10.

This is an important deadline and anyone who has not turned in their PCP form and has questions is asked to contact Rita Metcalfe at ext. 13158 before the deadline.

Faculty Meeting Set At 3:30 p.m. Thursday In Millington Hall

The annual Collegewide faculty meeting will be held at 3:30 p.m., Thursday, Sept. 10 in Millington Hall auditorium. A reception will follow in the Muscarelle Museum.

Parking Notice

The Stadium/Bryan parking lot, the pull-in spaces at Crim Dell, the Post Office lot, the pull-in spaces at the rear of St. Bede's Church, James Blair Drive up to James Blair Hall, James Blair Hall lot, and the eight pull-in spaces behind Blow Memorial Hall must be vacated by 8 a.m. on the Saturdays of home football games.

Vehicles in violation will be towed at owner's expense.

The next home football game is Saturday, Sept. 12 against VMI.

Canon Donates State-Of-The Art Equipment To Enhance Capabilities Of Language Laboratory

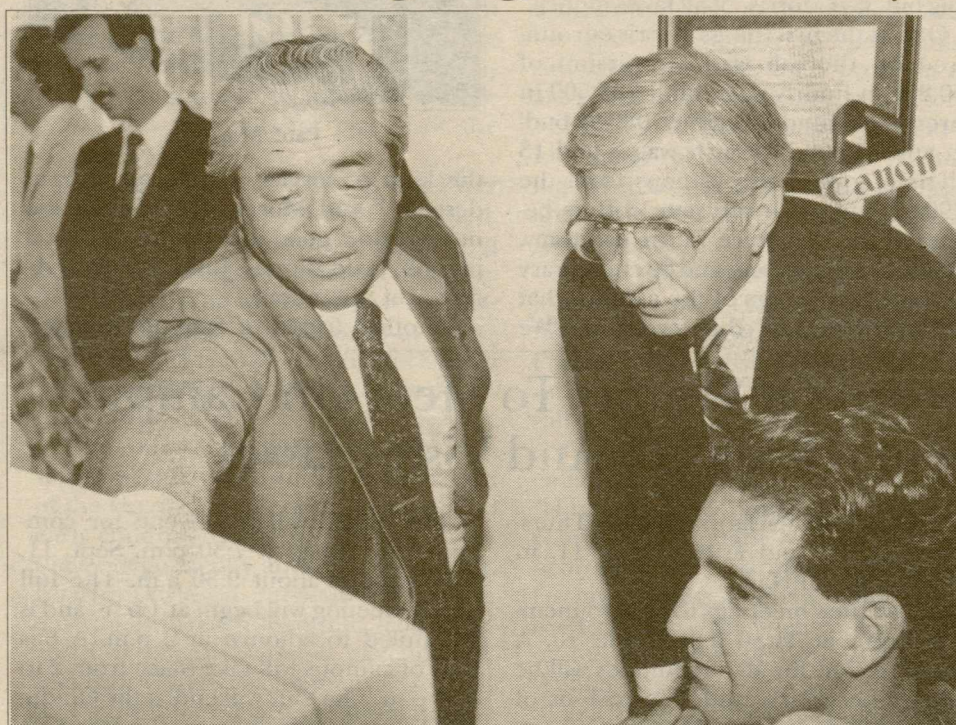
Canon Virginia Inc. has donated approximately \$100,000 in equipment for the modern languages department and Language Learning Laboratory in Washington Hall. Presentation ceremonies were held Friday afternoon.

Canon Virginia Inc., incorporated in 1985 and located in Newport News, has donated a significant number of business machines and photographic equipment to William and Mary. Included in the donation is an NP 2020 copier, the model now being produced at the Canon Virginia facility, a major regional manufacturer of laser beam printers, copiers, cartridges and toners.

Other equipment includes a facsimile machine, an electronic typewriter, still video cameras, portable word processors, bubblejet and laser jet printers, computers, and other high technology business machines and computer hardware and software.

"We are most pleased to present this equipment to the College of William and Mary. We hope that our gift will help

CONTINUED ON PAGE 7.



Pictured above, Canon President Shinichiro Nagashima shows President Sullivan the intricacies of a new computer being operated by Brett Sokolow, a student in his third year of Japanese study.

Students Begin Collection Drive To Help Hurricane Victims

Members of Alpha Kappa Alpha, in coordination with Help Unlimited, are collecting items for hurricane victims in Florida and Louisiana and are inviting members of the campus community to join them in their effort.

Throughout September collection bins will be placed in the Campus Center for items sorely needed by hurricane victims. No clothing is being sought. Items needed include non-perishables, such as canned food, bottled and canned juices; charcoal; toilet items including toothpaste; toothbrushes and soap; baby food and disposable diapers and baby wipes; matches; and manual can openers.

Student donations will be shipped to Florida and Louisiana by the Salvation Army which has already started relief shipments and plans to make its final run the end of September.

Several student leaders active in the drive are willing to take calls from donors concerning the drive. They include Scott Quatro, student activities coordinator in Ken Smith's Office in the Campus Center (ext. 13273); and David Moldarsky, co-director, (ext. 13294) with Steve Watts, of Help Unlimited; and Evonne Wall, service project chairman for Alpha Kappa Alpha.

Seafood Feast To Be First Event For College Club

The traditional fall Seafood Feast at VIMS, sponsored by the Faculty Club, is under new sponsorship this year and the invitation list has been expanded.

The Seafood Feast will be held at 6 p.m., Friday, Sept. 25 at VIMS by the College Club, a new organization which is extending membership to members of the old Faculty Club, the Women's Faculty Club and classified employees.

Tickets for the Sept. 25 party are \$12 for College Club members; \$15 for everyone else.

Officers of the College Club include Gary Shaw, assistant professor of business administration, president; Ken Kambis, associate professor of kinesiology, vice president; Ed Allenby, vice president for advancement, secretary; and Charles Dombek, associate director, facilities management, treasurer.

The purpose of the new organization,

explains Shaw, is to include a broader constituency and and to generate innovative programs for its membership.

Membership in the College Club entitles members to a 15 percent discount at the Marketplace in the Campus Center during peak hours (11 a.m. to 1 p.m.) and 20 percent during off-peak hours, (9-11 a.m. and 1-5 p.m.); a 20 percent discount on all meals at the Colony Room of the Hospitality House and 10 percent on all purchases in the Lounge; preferred lodging rates at 19 properties in Williamsburg for out-of-town guests or members of other clubs; reciprocal benefits at over 100 other faculty clubs around the country and abroad; and discounts at College Club functions.

Shaw says the club is committed to expanding the benefits to members of the College community. "We are actively engaged in securing a facility to serve as

a home for these efforts, a place where members may gather, talk, eat and drink, meet for business and pleasure. And we are trying to broaden the base of interest and support for our current and future activities. We hope to be able to develop a greatly augmented agenda of interests, spanning social, community service and academic activities."

The program for the 1992-93 school year includes a Holiday Ball, Dec. 4; Mardi Gras Masked Ball, Feb. 6; and Barbecue at The Winery, April 30.

Membership in the College Club is open to all faculty, administrators, and classified employees of the College and their spouses. The membership fee enables the club to defray costs of mailings and allow it to continue its membership in the Association of Faculty Clubs International.

NEWS

PAGE 3

PERSONNEL PAGE 2

ALUMNI

PAGE 3

Christopher Wren Assn. Holds Convocation Monday In W&M Hall

Facilities Management Introduces Zone Teams

Alumni Assist Virginia Power's Sweater Drive

NEWSMAKERS

Money And Workers Needed

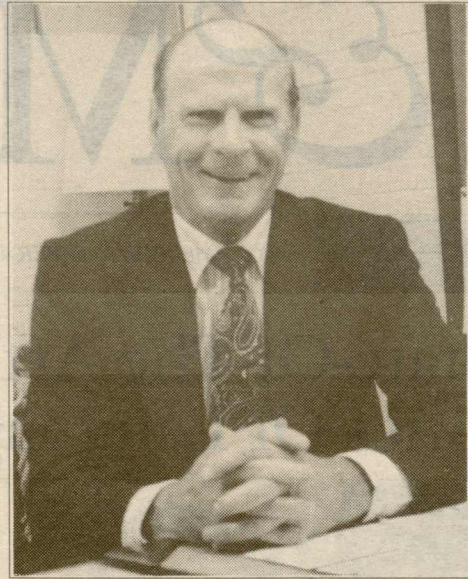
Zone Teams Stretch Resources To Cover Expanding Campus

Plumbing, heating, air-conditioning, water pipes and underground utilities are not the kind of topics to fascinate a university audience or inspire a half-time cheer in the football stadium. The quality of life on campus, however, wouldn't be much without them all in good working order.

Paul H. Morris, director of facilities management, views these topics with more enthusiasm than most people. Since he came to campus in 1989 from the University of Colorado at Boulder, he has been guiding the College of William and Mary into the modern age of maintenance, so the rest of the campus community doesn't have to spend time worrying about leaking faucets, falling plaster or flickering lights. But, and it is a big but, says Morris, "it all takes money."

One of the first things Morris encountered on the job was a reversion of \$10,800 in hourly wages and \$33,500 in unrestricted funds from the 1989-90 budget and \$5,500 in hourly wages and 13 full-time equivalent positions from the 1990-91 budget to the state coffers because of the downturn in the economy. Facilities management and Swem Library were the two sectors of the campus that took the brunt of the reversion. "We

regrouped with the survivors and Mr. Green's skills and it has made a difference, but we are not close to providing

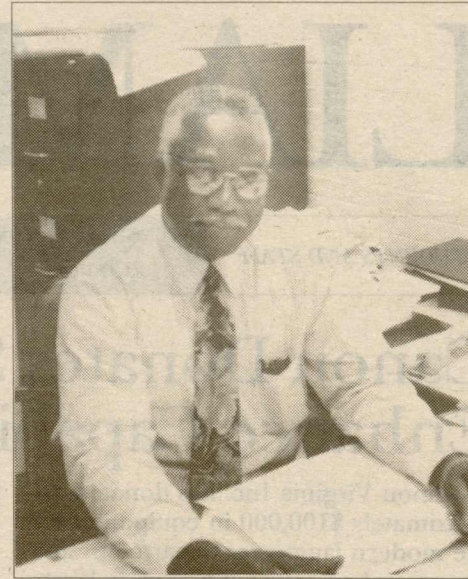


Paul Morris

the kind of service people on campus deserve," said Morris. "Mr. Green did not just do a good job, but an outstanding job," said Morris. Julius Green is director of operations.

Another friend of facilities manage-

ment during those lean year was Samuel E. Jones, associate provost for planning and budget. "Sam saved us from addi-



Julius Green

tional hits in '92 and actually increased our funding for the fiscal year '93 in an effort to restore funding lost to the reversions.

"Sam has always been very responsive to facilities management," adds Morris.

the expanding campus, says Green. When the Muscarelle Museum was added, no staff was added to accommodate the added responsibility of keeping heating and cooling equipment running and properly storing art works, he points out. He also notes that no new staff was added to take care of other campus additions including the Reves Center, the faculty studio at Matoaka Lake, the Recreation Sports building, the Day Care Center, the addition to Swem Library, the reconfiguration of Blow Memorial Hall, and the law school graduate housing. The department was promised half a person for Blow, Green recalls, but that did not happen.

Morris' staff helps out with calls to residence halls, but the Office of Residence Hall Life staff has primary responsibility for maintenance in these buildings and will add to its list the new University Center, when that building is completed.

With the assistance of Director of Operations Green, Morris has set up a zone team system for academic buildings which gets the work done and gives employees a pride of ownership in their section of the campus.

Under the new zone system, a multi-

Board Of Visitors To Meet On Campus Sept. 10 and 11 And Visit Classes

The Board of Visitors will meet Thursday, Sept. 10, and Friday, Sept. 11, in Blow Memorial Hall.

Committee meetings for board members begin at 11:30 a.m., Sept. 10. A closed session for all committees will be held, if necessary, under provisions of the state Freedom of Information Act. After a noon break for lunch, the visitors will continue committee meetings at 12:30 to 3:15 p.m. The board will then recess to attend the College-wide faculty meeting at 3:30 p.m. in Millington Auditorium.

The board will reconvene for committee meetings at 7:30 p.m. Sept. 11, and adjourn about 9:30 a.m. The full board meeting will begin at 1 p.m. and is scheduled to adjourn at 2 p.m. A bus tour of campus will take place from 2 to 3:30 p.m. The tour will end at the Graduate Housing Complex near the Marshall-Wythe School of Law, where a dedication ceremony will be held.

The visitors will also sit in on classes from 8 to 11 a.m. Sept. 10 and from 10 to noon Sept. 11.

Consortium Updates Borrowers' Rules

One of the immeasurable benefits of William and Mary's membership in the Tidewater Consortium of colleges and universities is the consortium's library-borrowing privileges. William and Mary faculty and students may borrow library materials from any of the other consortium libraries. In the past when visiting another member library, all one needed to do to borrow a book was present a William and Mary ID card. This is no longer the case.

This past summer the consortium adopted new procedures. Now William and Mary faculty and students must obtain a consortium library card from the Swem Library circulation desk before visiting another consortium library. This library card is good until the end of the semester in which it is issued. A new card must be obtained from Swem each semester. In order to borrow books from another consortium library, William and Mary faculty and students must present both the consortium library card issued by Swem and their current William and Mary ID card. Some institutions (e.g., Old Dominion University) charge a registration fee.

Consortium institutions are:

- Eastern Shore Community College
- Eastern Virginia Medical College
- Hampton University
- Norfolk State University
- Old Dominion University
- Paul D. Camp Community College
- Regent University
- Thomas Nelson Community College
- Tidewater Community College
- Virginia Wesleyan College

Christopher Newport University is no longer a member of the Tidewater Consortium. However, Swem Library will continue to loan materials to Christopher Newport faculty and students, and Christopher Newport's library has agreed to continue loaning materials to William and Mary faculty and students. To borrow materials from Christopher Newport's Captain John Smith Library, William and Mary faculty and students must present their current William and Mary ID card.

Materials borrowed from any consortium library or from Christopher Newport are the responsibility of the borrower who must pay any fines or lost book charges incurred. Swem's circulation department, ext. 13072, will be happy to answer questions about borrowing privileges at consortium libraries and Christopher Newport University.



Zone team no. 2: (l-r) Johnny Bolden; Michael Tunnage; A.D. Wiggins, leader; Al Slany and Ronnie Hastay.

Administrators are aware and responsive to infrastructure requirements; however, the campus continues to expand, adding more buildings, while the existing structures require just as much, if not more, of facility management's attention.

Morris is banking on passage of the \$613 million bond package this fall. William and Mary hopes to get \$17.1 million. Of that amount, Morris hopes \$2.8 will be used for underground utility maintenance for the campus.

"If we do get the money," said Green, "it will be a tremendous help to facilities management. We need to replace worn-out infrastructures that support the academic buildings and then we have problems once we get in the buildings. Water lines, sewer lines and electricity lines break. We have to replace cables every couple of weeks. Our underground utilities are very old."

For a period now stretching into two decades, the staff of facilities management has not grown to keep pace with

maintenance team, including a plumber, electrician, heating and air conditioning specialist, one helper and a team leader, have been assigned academic buildings in a particular area of campus. Morris has also set up a quick response team which primarily handles calls about indoor/outdoor lighting on campus and night calls.

Ideally the teams would have seven members and each member would be cross-trained to fill in where necessary. Currently there are five members on each team. Morris would like to see money in his budget for cross training of team members to increase their skills and value to the team. The team leader who would be responsible for work schedules, inspections and prevention programs in his zone is also a trained specialist.

Morris would also like to see the budgeting process done with the zone system in mind. Teams and the people they serve in their zones would have input

CONTINUED ON PAGE 6

NOTES

Ebony Expressions Offering Gospel Music Workshop

The Ebony Expressions will sponsor a gospel workshop from 9 a.m. to 3 p.m., Saturday, Sept. 26 in Ewell 151.

There is a registration fee of \$10, which includes lunch and all materials.

Registration deadline is Sept. 18.

For further information, call ext. 15317.



A scene from "Secret Lives of the Estuary."

Puppet Show Enlivens Estuaries Day Program

"Secret Lives of the Estuary," a folk-theater celebration of the life-rich waters where ocean and rivers mix, will be presented at York River Park on Estuaries Day, Saturday, Sept. 19. The 45-minute performance features 30 mask and puppet figures. Performances are scheduled for 11 a.m., 1 p.m. and 3 p.m. outside the park visitor center.

Estuaries Day is an annual celebration sponsored by the Chesapeake Bay National Estuarine Research Reserve System in Virginia, based at VIMS, and York River State Park. The day-long program begins at 10 a.m. and ends at 5 p.m.

For more information on the Estuaries Day program, call 566-3036.

Rec Center Pool Closed For Repairs

The Rec Center pool is closed for major filtration system repair until Fall break. The repairs are needed to insure the pool will operate without breakdowns during peak usage months.

Outdoor equipment is available for rental/purchase through the Rec Sports Outdoor Center. For information call ext. 13474.

Aerobic/wellness programs begin Sept. 14. The Rec Sports department is offering high- and low-impact aerobics, step aerobics and aqua aerobics throughout the year. The schedule has been posted around campus.

Anyone who left items in the Rec Center lockers last year can pick up their belongings between 9 a.m. and 5 p.m. at the center. After Sept. 15 unclaimed items will be given to Eastern State Hospital.

Town & Gown Luncheon

Reservations are due Monday, Sept. 14, for the first Town & Gown luncheon of the fall semester, Sept. 17. The speaker will be Jack D. Edwards, professor of government, who will speak on "The Perot Phenomenon."

Fee for the luncheon is \$6. Reservations may be made by calling 221-2640 or ext. 12640 on campus. The program begins at 12:15 p.m. in the Campus Center ballroom.

Topic for Sept. 24 will be related to the public policy conference "EC 1992 and Beyond: A Challenge to the Post-war World Order," which will be held on campus Sept. 25-27. Reservations for that luncheon are due Sept. 21.

Kaler Opens Ewell Series

Violinist Ilya Kaler will open the Ewell Concert Series with a recital at 8 p.m., Saturday, Sept. 12.

Admission is \$2 at the door; no advance ticket sales. This series is sponsored by the department of music and funded by the Association of Parents.

A distinguished performer, Kaler won the gold medal at the Tchaikovsky Competition in Moscow in 1986 and the gold medal at the Sibelius Competition in Helsinki, as well as a special prize for the best performance of the Sibelius Concerto in 1985. In 1990 he was a judge at the competition. He won the grand prize at the Paganini Competition in Genoa, Italy, in 1981.

Kaler has played with distinguished orchestras throughout Europe. He was born in Moscow and has studied under Zinaida Gilels and Yury Yankelevich, and at the Moscow Conservatory with famous violinists Leonid Kogan and Victor Tretyakov.

Kaler has elected to play Sonata No. 2 in A minor for violin solo, "Six Caprices" by Paganini; Sonata in D major for violin solo by Prokofiev; "Partita" (1967) by Barkauskas; and Sonata No. 2 for violin solo by Ysaye.

Jackson Tickets

Tickets for the first program in the Student Association Speakers Series, featuring the Rev. Jesse Jackson, are on sale at William and Mary Hall (ext. 13340) and all Ticketmaster locations. Tickets are \$5 for William and Mary students; \$8 for faculty and staff, and \$10 for the general public.

Faculty and Emeriti Lend Talents

CWA Holds Fall Convocation Monday In W&M Hall

The Christopher Wren Association will officially open its fall semester with a convocation at 2 p.m., Monday, Sept. 14 in the Wightman Cup Room of William and Mary Hall.

The CWA is open to Williamsburg area residents of retirement age who seek regular opportunities for learning and fellowship through in-depth study, social occasions, field trips, and whatever other activities its membership choose to sponsor. The Association, operated under the auspices of the College, is managed by and for its members.

Membership fee for the fall semester is \$75 per person. The fee includes 12 weeks of classes in any combination a member chooses, social occasions, brown bag lunches and eligibility to participate in all additional functions sponsored by the Association. The fee does not include books and materials for classes or the cost of day trips.

This semester a Rappahannock River cruise and a visit to CEBAF are planned.

A chance for those who enjoy singing is being offered this semester with the CWA ChorUs, an invitation to learn new skills or sharpen the old ones in three- and four-part choral work from classical and semiclassical literature. Choral director will be Bettejane Crossen.

The courses being offered span a wide variety of interests from an examination of the language of Beowulf to a guide to early childhood. Instructors come from the College faculty and the community. Charles Davidson, professor of English emeritus, will teach "Beowulf: Scop Talk," and Corrine W. Garland, executive director of Child Development Resources in Lightfoot, will give grandparents a guide to understanding the new members of their family.

Brian Blouet, Huby Professor of Geography and International Education, will teach a course on Europe and European integration, and Edwin Rhyne, pro-

fessor of sociology, will teach "Human Geography of the Third World."

Jack Willis, professor of English, will direct three weeks of reading and discussion of W. B. Yeats' poetry and a three-week course on Seamus Heaney, Ireland's most distinguished living poet.

Satoshi Ito, associate professor of sociology, will draw on some of his own experiences as an internee for a course titled "Executive Order 9066 Revisited: World War II Internment of Japanese-Americans."

R. Wayne Kernodle, professor of sociology emeritus and Heritage Fellow, will discuss "The American Family: A Century of Change." Kernodle and his wife Ruth, professor of sociology emerita from Christopher Newport University, established the CWA program and are active as planners and instructors.

Dennis B. Blanton and Donald W. Linebaugh of the Center for Archaeological Research will teach a course on archaeological exploration in Tidewater Virginia.

Frank McDonald, professor of philosophy emeritus, will teach "Descartes' Meditations." Scott Donaldson, Cooley Professor of English emeritus and biographer of several 20th-century writers, will discuss Robert Frost's poems.

Carl Dolmetsch, professor of English emeritus, will teach a course on opera. "Humanism in Primitive Religions" is a course to be taught by Vinson Sutlive, professor of anthropology. Emeric Fischer, professor of law, emeritus, will teach a course on Judaism. Fischer is a retired lay reader of Temple Beth El in Williamsburg.

Eric Ayisi, assistant to the provost for off-campus and minority affairs, who makes frequent trips to South Africa and is a native of Ghana, will teach a course titled "South Africa in Transition."

For detailed information on CWA courses and timetables, call ext. 11079.

Hewitt To Open Fall Series By Commonwealth Center

Nancy A. Hewitt, professor of history, Duke University, will speak on "Vying for Visibility: Race, Class and Gender in American Histories," at 5 p.m., Thursday, Sept. 17 in the Botetourt Theatre of Swem Library.

This seminar is sponsored by the Commonwealth Center for the Study of American Culture.

Hewitt will focus particularly on her current research for two books: a study of Anglo, Black and Latin women in Tampa, Florida, 1885-1945, and a synthetic work on Native American, Euro-American, African American and Hispanic women in antebellum America.

Professor Hewitt is especially con-

cerned with rethinking ways to conceptualize identity, balance attention to difference and develop larger syntheses in American history. She will discuss how she has become more sensitized to integrating issues of race and class along with gender in her research on 19th- and 20th-century women's history.

November Voters Must Register By Oct. 3

Registration Available In Blair, Campus Center And Law School

Those who wish to vote in the Nov. 3 general election must be registered by 5 p.m., Saturday, Oct. 3. Any qualified resident of the state of Virginia may register to vote.

A permanent satellite registration site

has been set up in the Office of Residence Life in James Blair Hall and is open Mondays and Wednesdays from 9 a.m. to noon and Tuesdays and Thursdays from 1 to 4 p.m.

Two other campus sites for registration have been set on a temporary basis. There will be a registration table in the Campus Center from 11 a.m. to 2 p.m.,

Sept. 14-18.

There will also be a registration table set up in the main lobby of the Marshall-Wythe School of Law from 11 a.m. to 2 p.m., Thursday, Sept. 24.

Applications for Virginia absentee ballots are also available at the registration locations.

For further information, call 220-6157.

International Faculty Development Seminars

The Council on International Educational Exchange offers faculty development seminars on contemporary issues in various world centers. 1992-93 offerings include Brazil, Chile, Germany, Hong Kong, Japan, Northern Ireland, Poland, Russia, the U.S., Vietnam and Zimbabwe.

Fees range from \$1,100 to \$1,675 plus travel.

Contact Anna M. Moore, Reves Center, ext. 13594 for details.

Society Of The Alumni Helps With Virginia Power's Sweater Drive

As a participant in Virginia Power's Sweater Recycling Project, the Society of the Alumni invites area citizens to bring their old, usable sweaters to the W&M vs. VMI football game at Zable Stadium Saturday, Sept. 12.

Members of the Williamsburg Alumni Chapter will be collecting the sweaters during the first quarter at both gates. Those who are not coming to the game are asked to take their sweaters to any Farm Fresh store in Hampton Roads between 9 a.m. and 4 p.m. that day.

After the massive one-day collection on Sept. 12, sweaters will be taken to local Salvation Army facilities for distribution to the needy in Hampton Roads through health and human services agencies, including United Way, churches and schools. Virginia Power launched the Sweater Recycling Project last fall in Richmond and more than 115,000 sweaters were donated. The supply of approximately 20,000 children's sized sweaters almost was depleted before the cold weather months arrived.

New Full-Time Faculty and Administrative Appointments

ARTS & SCIENCES

AMERICAN STUDIES

GEORGE L. HENDERSON, Assistant Professor of American Studies.
B.S. (1981), M.A. (1987), University of Delaware;
Ph.D. (candidate), University of California-Berkeley.

ANTHROPOLOGY

RENEE L. PENNINGTON, Assistant Professor of Anthropology.
B.A., University of Montana, 1983;
M.A. (1987), Ph.D. (1990), Pennsylvania State University.

SCOTT R. SCHNELL, Assistant Professor of Anthropology.
B.S. (1976), M.S. (1979), M.A. (1987), M.A. (1989),
Ph.D. (candidate), Ohio State University.

BIOLOGY

NORA ANN BENNETT, Instructor of Biology.
B.S. (1983), M.A. (1987), College of William and Mary.
Adjunct Professor, J. Sargent Reynolds Community College, 1990 to present.

S. LAURIE SANDERSON, Assistant Professor of Biology.
A.B., University of Hawaii, 1981;
A.M. (1984), Ph.D. (1987), Harvard University.
Lecturer, University of West Indies, 1990-91.

CHEMISTRY

ROBERT D. PIKE, Assistant Professor of Chemistry.
B.S., George Washington University, 1982;
Ph.D., Brown University, 1990.
Visiting Assistant Professor, Brown University, 1991-92.

JONATHAN TOUSTER, Assistant Professor of Chemistry.
B.A., Bard College, 1985;
Ph.D., Wesleyan University, 1991.

COMPUTER SCIENCE

GIANFRANCO CIARDO, Assistant Professor of Computer Science.
B.S., Universita di Torino, 1982;
Ph.D., Duke University, 1989.

ECONOMICS

WAYNE A. GROVE, Visiting Assistant Professor of Economics.
B.A., Illinois Wesleyan University, 1983;
M.S., American University, 1986;
Ph.D. (candidate), University of Illinois.

SALEHA JILANI, Instructor of Economics.
B.A., Swarthmore College, 1987;
Ph.D. (candidate), Johns Hopkins University.

LYNNE L. KIESLING, Instructor of Economics.
B.S., Miami University, 1987;
Ph.D. (candidate), Northwestern University.

DIANE S. OWEN, Instructor of Economics.
B.A., Williams College, 1983;
M.A., Cambridge University, 1985;
M.A., Yale University, 1986;
Ph.D. (candidate), Yale University.

ENGLISH

JANE L. ASHWORTH, Instructor of English.
B.A. (1959), M.A. (1961), West Virginia University.
Instructor, College of William and Mary, 1986 to present.

PAULA BLANK, Assistant Professor of English.
B.A., Wesleyan University, 1981;
A.M. (1985), A.M. (1987), Ph.D. (1991), Harvard University.
Assistant Professor, Hofstra University, 1991-92.

CHRISTY L. BURNS, Instructor of English.
A.B., Cornell University, 1984;
Ph.D. (candidate), Johns Hopkins University.

JACQUELYN MCLENDON, Associate Professor of English.
B.A., Temple University, 1979;
M.A. (1981), Ph.D. (1986), Case Western Reserve University.
Assistant Professor, Amherst College, 1989 to present.

ELINOR H. WARNER, Instructor of English.
B.A., Sweet Briar College, 1985;
Ph.D. (candidate), M.A. (1988), University of Virginia.

KIM WHEATLEY, Instructor of English.
B.A., Cambridge University, 1982;
M.A., York University, 1984;
M.A., Johns Hopkins University, 1986;
Ph.D. (candidate), Johns Hopkins University.

GEOLOGY

PATRICK BURKHART, Assistant Professor of Geology.
B.A., Case Western Reserve University, 1985;
M.S., Wright State University, 1987.
Ph.D. (candidate), Lehigh University.

GOVERNMENT

TUN-JEN CHENG, Associate Professor of Government.
B.A., National Taiwan University, 1969;
M.A., University of Waterloo, 1978;
Ph.D., University of California-Berkeley, 1987.
Assistant Professor, University of California-San Diego, 1987 to present.

DAVID ANDREW LEBLANG, Instructor of Government.
B.A., Florida State University, 1988;
Ph.D. (candidate), Vanderbilt University.

HISTORY

LU ANN HOMZA, Instructor of History.
B.A., Scripps College, 1980;
M.A. (1981), Ph.D. (candidate), University of Chicago.

JON F. SENSBACH, Visiting Fellow in the Institute of Early American History and Culture and Assistant Professor of History.
B.A., University of Virginia, 1980;
Ph.D., Duke University, 1991
Director of "African-Americans in Salem", Old Salem, Inc., 1989 to present.

WADE L. SHAFER, Visiting Assistant Professor of History.
B.A. (1985), M.A. (1987), University of Texas at Arlington.
Instructor, Thomas Nelson Community College, 1991;
Instructor, College of William and Mary, 1991.

MECHAL SOBEL, James Pinckney Harrison Professor of History.
B.A., Brooklyn College, 1956;

M.A., Columbia University, 1962;
Ph.D., Boston University, 1968.
Professor (1990 to present), Associate Professor (1969-87), University of Haifa;
Visiting Professor, New York University, 1988-89.

MATHEMATICS

MICHAEL A. DRITSCHERL, Visiting Assistant Professor of Mathematics.
B.A., B.S., University of Texas, 1978;
M.S., Northwestern University, 1980;
Ph.D., University of Virginia, 1989.
Research Assistant Professor, Purdue University, 1989-91.

CATHERINE HOFFMASTER, Instructor of Mathematics.
B.A. (1971), M.A. (1973), Cleveland State University;
Instructor, Christopher Newport College, 1989 to present;

LAWRENCE M. LEEMIS, Associate Professor of Mathematics.
B.S. (1978), M.S. (1980), Ph.D. (1984), Purdue University.
Assistant Professor (1984-90); Associate Professor (1990 to present), University of Oklahoma.

NAM-KIU TSING, Visiting Associate Professor of Mathematics.
B.A. (1979), Ph.D. (1983), University of Hong Kong.
Systems Research Center Graduate Fellow, University of Maryland, 1989 to present.

MODERN LANGUAGES

ANTHONY A. ANEMONE, JR., Associate Professor of Modern Languages and Literatures.
B.A., Columbia University, 1976;
M.A. (1979), Ph.D. (1985), University of California-Berkeley.
Assistant Professor, Colby College, 1985 to present.

KRISTEN E. BRUSTAD, Assistant Professor of Modern Languages and Literatures.
B.S., Georgetown University, 1980;
Ph.D., Harvard University, 1991.
Assistant Professor, Harvard University, 1991-92.

MARYSE FAUVEL, Assistant Professor of Modern Languages and Literatures.
CAPES d'Allemand, 1981;
M.A. (1986), Ph.D. (1989), University of Wisconsin-Madison.
Visiting Assistant Professor, Oberlin College, 1991-92.

BELLA GINZBURSKY-BLUM, Instructor of Modern Languages and Literatures.
B.A. (1988), M.A. (1991), Ph.D. (candidate), SUNY at Stony Brook.

ELIZA NICHOLS, Instructor of Modern Languages and Literatures.
B.A., University of Pennsylvania, 1985;
M.A. (1990), Ph.D. (candidate), Yale University.

MARIA ELENA SOLIÑO, Instructor of Modern Languages and Literatures.
A.B., Barnard College, Columbia University, 1987;
M.A., Yale University, 1989;
M.Phil., Yale University, 1990.
Instructor, Yale College Seminar Program, 1991.

SUE-ELIZABETH WILLINGHAM, Instructor of Modern Languages and Literatures.
B.A. (1973), M.A. (1983), Baylor University;
Ph.D. (candidate), University of Texas at Austin, 1991.

ZHIPING ZHU, Instructor of Modern Languages and Literatures.
B.A. (1984), M.A. (1987), Beijing Normal University.
Instructor, Beijing Normal University, 1987 to present.

PHILOSOPHY

KEITH L. BUTLER, Visiting Assistant Professor of Philosophy.
B.A. (1984), M.A. (1987), Ph.D. (1991), University of Wisconsin-Madison.
Assistant Professor, University of New Orleans, 1991 to present.

STEPHEN R. HARRIS, Visiting Assistant Professor of Philosophy.
B.A. (1983), Ph.D. (1990), Florida State University.
Adjunct Instructor, Florida State University, 1991-92.

MICHELLE A. LAROCQUE, Instructor of Philosophy.
B.A., Colgate University, 1985;
Ph.D. (candidate), Duke University.

PHYSICS

DENNIS M. MANOS, CSX Professor of Applied Science and Professor of Physics.
B.S., Case Institute of Technology, 1968;
Ph.D., Ohio State University, 1976.
President and CEO (1990 to present), Treasurer and Vice President of Operations (1981-89),
Princeton Scientific Consultants, Inc.;
Physicist, Princeton University, 1978 to present.

PSYCHOLOGY

JUDITH S. DUBAS, Assistant Professor of Psychology.
B.S., Pennsylvania State University, 1978;
Ph.D., Temple University, 1989.
Research Associate, Pennsylvania State University and The Milton S. Hershey Medical Center, 1991 to present.

LYNN S. GILLIKIN, Assistant Professor of Psychology.
A.B., College of William and Mary, 1967;
M.A. (1968), Ph.D. (1970), University of Virginia.
Part-Time Assistant Professor, College of William and Mary, 1973-75, 1990-91.

ROBERTO REFINETTI, Assistant Professor of Psychology.
B.A., Pontifical Catholic University and University of Sao Paulo, 1981;
M.A., University of Sao Paulo, 1983;
Ph.D., University of California-Santa Barbara, 1987.
Instructor, University of Virginia, 1990 to present.

RELIGION

MARY J. GENTES, Visiting Assistant Professor of Religion.
B.A., University of California-Berkeley, 1970;
M.A., University of Hawaii, 1976;
Ph.D., University of Virginia, 1987.
Visiting Scholar, University of Texas at Austin, 1991.

THEATRE AND SPEECH

TAMARA L. BURK, Instructor of Theatre and Speech.
B.A. (1987), M.A. (1990), University of Maine.
Adjunct Faculty, Thomas Nelson Community College, 1992 to present.

SCHOOL OF BUSINESS ADMINISTRATION

PRABHU K. AGGARWAL, Visiting Assistant Professor of Business Administration.
B.Tech., Indian Institute of Technology, 1986;
M.B.A. (1988), Ph.D. (1991), University of Washington.
Lecturer, University of Washington, 1991 to present.

SASSON BAR-YOSEF, Richard S. Reynolds, Jr., Visiting Professor of Business Administration.
B.A. (1966), M.A. (1966), Hebrew University of Jerusalem;
Ph.D., The University of Aston, 1973.
Professor, The Hebrew University of Jerusalem, 1978 to present.

KELLY MAURA LEAHY, Assistant Professor of Business Administration.
B.A., University of Notre Dame, 1982;
Ph.D. (candidate), University of Texas at Austin.

SUSAN POURCIAU, Visiting Assistant Professor of Business Administration.
M.A. (1988), B.S. (1977), University of South Florida;
Ph.D., Arizona State University, 1988.
Assistant Professor, Florida State University, 1988 to present.

JEFFREY W. SCHATZBERG, Visiting Assistant Professor of Business Administration.
B.A. (1978), M.A. (1981), Ph.D. (1987), University of Iowa.
Assistant Professor, University of Arizona, 1987 to present.

JIANLIANG LEON ZHAO, Assistant Professor of Business Administration.
B.S., Beijing University, 1982;
M.S., University of California-Davis, 1985;
Ph.D. (candidate), University of California-Berkeley.

SCHOOL OF EDUCATION

MARGARET E. DIXON, Visiting Assistant Professor of Education.
B.S., University of Utah, 1967;
M.Ed., Brigham Young University, 1971;
Ph.D., University of Arizona, 1983.
Assistant Professor, University of North Texas, 1987 to present.

VICTORIA ANN FOSTER, Assistant Professor of Education.
B.A. (1974), M.A. (1979), The University of Alabama;
Ed.D., North Carolina State University, 1989.
Clinical Vice President, Lutheran Family Services in the Carolinas, 1989 to present.

RACHEL ELLEN JANNEY, Visiting Assistant Professor of Education.
B.A., College of Wooster, 1974;
M.S., Syracuse University, 1978;
Ph.D., University of Nebraska-Lincoln, 1982.
Collateral Assistant Professor, Virginia Commonwealth University, 1989 to present.

DONNA P. OWEN, Director of Pre-Collegiate Programs in the Center for Gifted Education.
B.A. (1961), M.A.T. (1969), Lynchburg College;
Ed.S. (1988), Ed.D. (1991), College of William and Mary.

LYNN ELLEN PELCO, Assistant Professor of Education.
B.S. (1981), M.S. (1983), Ph.D. (1986), Pennsylvania State University.
Assistant Professor, Pennsylvania State University, 1990 to present.

NANCY NELSON SPIVEY, Associate Professor of Education.
B.A. (1963), Ph.D. (1983), University of Texas at Austin;
M.A., Southern Methodist University, 1977.
Associate Professor (1991 to present), Assistant Professor (1986-91), Carnegie-Mellon University.

SCHOOL OF MARINE SCIENCE

MARK ROBERT PATTERSON, Associate Professor of Marine Science.
A.B., Harvard College, 1979;
A.M. (1982), Ph.D. (1985), Harvard University.
Assistant Professor, University of California-Davis, 1986 to present.

ADMINISTRATION

RONALD HOFFMAN, Director, Institute of Early American History and Culture; Visiting Professor of History.
B.A., George Peabody College, 1964;
M.A. (1965), Ph.D. (1969), University of Wisconsin.
Associate Professor (1974 to present), Assistant Professor (1969-74), University of Maryland.

ANN M. MOORE, Assistant Director for Programs Abroad, Reves Center for International Studies.
B.A., Harvard University, 1961;
M.A., Stanford University, 1965;
Ph.D., University of Oregon, 1980.
Program Officer, Great Lakes Colleges Association, 1989 to present;

ATHLETICS

JAMES A. FARR, Head Coach, Men's Baseball.
B.S. (1978), M.S. (1992), Pennsylvania State University.
Assistant Baseball Coach, Old Dominion University, 1988 to present.

CHRISTOPHER A. THATCHER, Assistant Coach, Football.
B.A., Lafayette College, 1986.
Assistant Football Coach, Columbia University, 1990 to present.

STUDENT AFFAIRS

JERRYL BRIGGS, Assistant Director of Residence Life.
B.S., Xavier University of Louisiana, 1985;
M.A., Louisiana Tech University, 1987.
Area Coordinator, Georgia Institute of Technology, 1990 to present.

KELLY R. CRACE, Clinical Psychologist.
B.A. Vanderbilt University, 1982;
M.A. (1987), Ph.D. (candidate), University of North Carolina at Chapel Hill.
Psychology Intern, Counseling and Psychological Services, Duke University, 1991 to present.

GRACE E. REYNOLDS, Assistant to the Acting Director of Residence Life.
B.A., University of Michigan, 1990;
M.A.Ed., College of William and Mary, 1992.

SWEM LIBRARY

ANDREA C. MATLAK, Assistant University Archivist.
B.F.A., Massachusetts College of Art, 1984;
M.L.S., Simmons College, 1990.
Curatorial Associate/Appraisal Archivist, Harvard University, 1988 to present.

UNIVERSITY ADVANCEMENT

PATRICK D. KELLOGG, Assistant Director for Capital Support.
B.A., Rider College, 1988;
M.A., College of William and Mary, 1992.

Zone Team Concept Better Distribution Of Workload

CONTINUED FROM PAGE 2.

into how money allocated for their zone would be spent.

Morris and Green see many reasons to be excited about the zone concept. For one thing, explains Morris, it gives employees an opportunity to develop a sense of pride in the work they do in their zone. The zone concept also lends itself to a better distribution of the workload and a lessening of overtime. This is a saving for the College, says Morris, but quickly adds that just as important is the fact some of his employees have more than one job and must maintain a consistent schedule.

Morris has high praise for workers in his department. "Of all the places I've been, I've never seen the dedication to the institution that the people here have for the College, in spite of how the state treats them, and that is sad because they deserve better. Without exception you can ask any employee to help out on a situation and they don't just do the job, they do it well. That attitude is very important to me. If you are going to do it and be unhappy about it, that's no good. People really do care for this place."

The stress of doing more with less is evident when A. D. Wiggins, leader of Zone team No. 2, which is responsible for work in 23 buildings from Swem Library to the President's House, talks about the situation. He thinks the idea of the team concept would be great if he had more men and less buildings to cover. There used to be more carpenters and painters, he says, and adds that over the past 20 years he has only seen one air conditioning man and one electrician added. "Over the years we've lost people. ... There just aren't enough people to go around." Wiggins feels that it is difficult for a team member to do the work of his speciality well when he is called to help someone else in a field in which he is not trained. Greg Wiggins, an electrician who heads the quick response team, says the new system gives him a "better handle" on things but adds that there are not enough people to go around. One member of the team works a night shift and most of his calls concern outdoor lighting and fire alarms. The fire alarm calls, he says, are 90 to 95 percent due to either vandalism or bad cooking. Since phone lines have been upgraded only a small percentage of calls are the result of equipment failure.

John Lindsey, an air conditioning and refrigerator leadman and team leader,

echoes the sentiments of other team leaders. "We're short handed. ... There's no time to get caught up and do the things we should be doing such as preventive maintenance." As well as his quota of buildings, Lindsey and his crew help support athletic department events and set up for craft shows and concerts in William and Mary Hall. A craft show, says Lindsey, can call for 200 additional electrical receptacles.

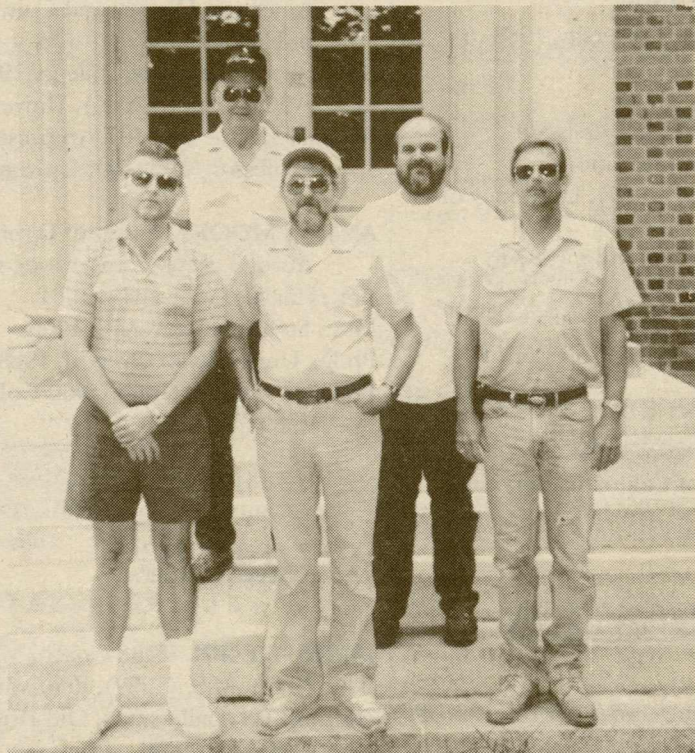
The Muscarelle Museum is one of the buildings in Lindsey's zone. The staff there has high praise for his work and that of his team, and appreciate their willingness to respond night or day.

"The plan is working better than I thought it would," says team leader

bers provide their own hand tools.

Morris readily admits that the system has a way to go to achieve the optimum in service and preventive work, but he's

working on it, and hoping for more funds for personnel and equipment to get the job accomplished.



Zone Team No. 3: David Tidwell; Gill Crews; George Prillaman; Donald Howard, leader; and Mike Marrs.

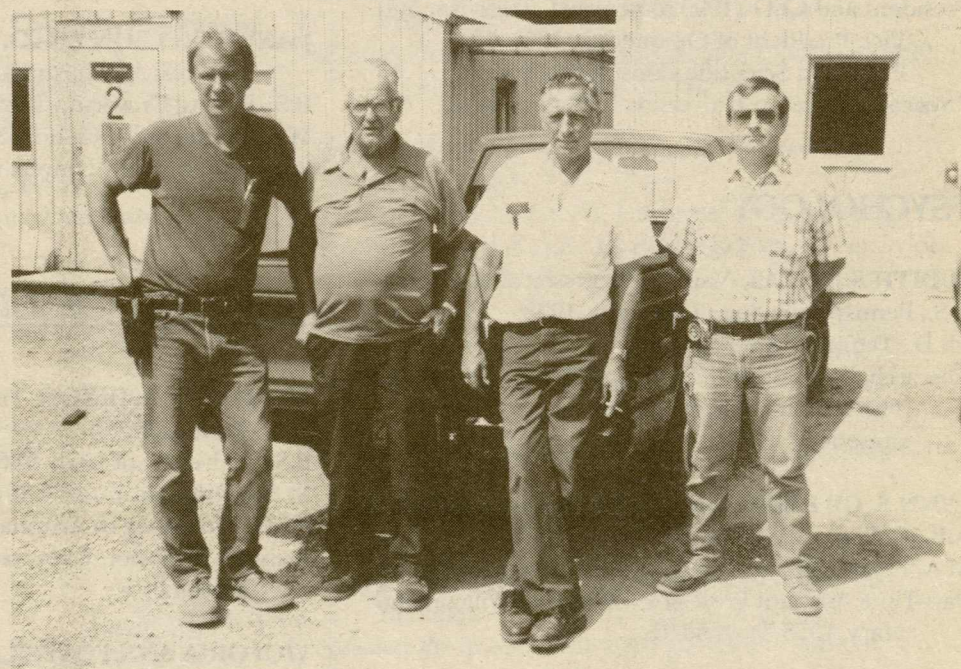
Donald Howard. But we do need more men. We're able to keep up but we are doing more with less. His assignment includes 27 buildings in an arc on the old campus, encompassing the Student Health Center to College Apartments on Boundary Street and the Marshall-Wythe School of Law.

Morris has made many changes since he has been here. For one thing he has improved the water line system so that a breakdown no longer requires cutting off multiple buildings. He started a computerized system of record keeping. Morris is working on preventive maintenance and seeking to overcome the legacy of deferred maintenance, instituted to make the most of scarce funding. Under the latter system, the first breakdown of service due to equipment failure would be answered by switching on the backup system. The maintenance on the first system was often deferred to accommodate more urgent problems so the second breakdown was serious because there was no backup system.

Morris has started a central warehouse for materials and tools but it is not yet as complete as the teams would like. There are times when jobs must wait for parts and tools. In most instances team mem-



Quick response team: (l-r) Don Morgan; Paul Tidwell; Russell Chandler; and Greg Wiggins.



Chief technician inspectors: (l-r) Gary Fannin, Eddie Martin, Lyle Wiggins and Wilbur Hall.



Zone Team No. 1: Mike Epperson; John Lawson; John Lindsey, leader; Mike Miller; and Durwood Johnson.

Lifetime Membership Is \$5

CommonHealth Offering Incentive for Participants in September Classes

CommonHealth is offered to all state employees and their families. The CommonHealth program is developed and maintained by Continental Health Promotion, a professional wellness provider contracted by the state of Virginia.

A lifetime employee membership in the CommonHealth program is \$5 for as long as that member is a state employee. A family membership, which includes husband and wife and any family member over the age of 18 living in your household is \$7. Although children are sometimes included in special Common-

Health promotions, there is no continuing program for youngsters.

A medical screening is required for membership and an optional re-screening will be offered every two years for a \$5 fee.

Geared to help employees maximize their potential through good health habits, CommonHealth offers a wide variety of programs and health-related activities including the following:

Aerobic exercise, stress management, stop smoking seminars, weight loss and nutrition programs, cardiovascular risk

reduction programs, cholesterol management, sessions on rape awareness and self defense; hypertension control, medical self care, walking programs and sessions on taking care of the back.

The current newsletter, *CommonHealth Challenger*, includes helpful hints on getting and staying fit and an employee interest survey that seeks to tailor programs to the needs and preferences of William and Mary employees.

For information about CommonHealth, membership applications and copies of the *CommonHealth Challenger*,

stop by and see Margo Wright, CommonHealth Coordinator, Adair 112, or call her at ext. 12776. The survey is due by Sept. 15.

CommonHealth is offering an incentive to members who attend at least two classes a week for the month of September—a CommonHealth mug, free.

Those enrolled in the Low-Impact Combo Aerobics which meets Monday, Wednesday and Friday, are asked to note that the time for this class has been changed from 12:05-12:50 to 12:15 to 1 p.m. The class meets in Adair 103.

Minority Career Day At UVA Nov. 3

Deadline for registration for the Nov. 3 Minority Career Day at the University of Virginia is 5 p.m., Oct. 23.

Students wishing to participate must register with the receptionist in the Office of Career Services, Blow Hall 123 before the Oct. 23 deadline.

Transportation by bus to Charlottesville will be provided if a sufficient number of people register. The bus will leave from the front of Blow Hall at 8 a.m. and return around 5 p.m.

It is anticipated that 150 employers representing a wide variety of career fields will attend the event which is sponsored by the Office of Career Planning and Placement at UVA. There will be a panel discussion which will focus on issues relating to the minority student job search.

Students are encouraged to register and take advantage of the November program to get an early start on career planning and job searching.

Canon Donates To Language Lab

CONTINUED FROM PAGE 1.

facilitate the teaching and learning of modern languages, and we have every confidence that the school will utilize the products most effectively," said Shinichiro Nagashima, company president.

"We are particularly pleased that we can play this productive role in the life of the college this year, the institution's 300th anniversary," Nagashima said.

William and Mary President Timothy Sullivan said the equipment will enhance language studies at the college, which include Chinese, French, German, Ital-

ian, Japanese, Portuguese, Russian and Spanish.

"Canon Virginia has made a remarkably generous and especially appropriate gift to the college. Our students are destined to become national leaders. Canon Virginia's gift will strengthen their understanding of the Japanese language and thus the culture of one of the nation's most important trading partners and allies," Sullivan said.

"I can think of no more fitting recognition of the developing relations between Canon Virginia and the College of William and Mary."

CLASSIFIED ADVERTISEMENTS

Classified ads are included as a service to members of the College community and will be accepted from faculty, staff, students and alumni only. Ads should be no longer than 40 words and must be submitted in writing to the William and Mary News office no later than 5 p.m. on the Friday preceding the first insertion.

FOR SALE

Automobiles

1991 Nissan Sentra XE, 4-door, AC, cruise control, AM/FM cassettes. \$8,699. Call Kris or Jim at 886-9425. (9/16)

1981 Chevy Citation, 140K miles, good condition, one owner with all records, PS/PB, AC, AM/FM, standard transmission, cloth interior, two toned brown, needs a minor repair, \$250 negotiable. Call Patty at 220-4802. (9/16)

1989 Ford Ranger XLT, extended cab, 2.9 L V-6, 5 speed, A.C., AM/FM cassette, shell, bedliner, new radials, excellent condition, \$8800. Call 221-2720. (9/16)

Sky blue, Volkswagen Rabbit, diesel, 2D LS, 1982. Immaculate condition, excellent gas mileage. \$1325 or best offer. Contact Sky Cline at ext. 15157. (9/23)

1983 Ford Escort with new tires and brakes. Very dependable. \$975. Call 253-6418. (9/23)

1983 Nissan 4x4 pickup, 140K miles, rebuilt engine, one owner, needs work, \$1,000. Call Dennis, ext. 13467 or 220-8355. (9/23) (9/23)

Homes and Property

3-BR, 2-bath brick home in quiet, wooded area 1 mile from campus. One-story rancher, central heat and AC, fireplace, hardwood floors throughout. \$155,000. Sale by owner. Call 1-442-9649. (9/9)

First Colony lakefront 2/3 acre lot. \$65,000. Call 229-2097 or ext. 12365. (9/16)

Furniture

Two dinette sets. One 48" oval oak table top with 4 country blue chairs, \$225. One 5' oval (with leaf) oak table top with black chairs, \$225. Both like new. Call 766-2342. (9/9)

Queen-size sleeper sofa, \$100 negotiable. Call Tom or Linda, 229-7006. (9/16)

Rug, navy blue, 12'x15' (too large for present townhouse), with bound edges. Only 18 months old, very good condition. \$60. Call 221-8385 after 5 p.m. (9/16)

Waterbed, king size, \$85; ping-pong table, folding, \$75. Both good condition with accessories. Call 229-3531 or 229-9772. (9/16)

Dining room table, dark pine, pedestal, with two expansion inserts and four matching chairs. \$150. Contact Diana, ext. 12500 daytime or 258-0120 after 5:30. (9/23)

Miscellaneous Articles

Taxan Crystal Jet laser postscript printer, model KE300. Emulates HP Laser Jet/Laser Jet+. Has 3 MB RAM. Never used. Must sell. \$1,100 or best offer. Call 220-2127 and leave message. (9/9)

Apple Image Writer II, near letter quality printer, mint condition; includes color ribbon and some paper. \$200 or best offer. Call ext. 12444 or 221-8167. (9/16)

Seagate ST251-1 40 Meg hard drive for IBM PC and clones (MFM), \$100; Princeton Graphics 14" hi-res multisync (CGA through SVGA, Mac II) monochrome monitor, \$100. Call 229-2097 or ext. 12365. (9/16)

Baby swing, stroller, crib, car seat, and Sassy Seat. Make offer. Call 229-0244 or 221-3912. (9/16)

Sanyo GXT 727 stereo music system which includes turntable, dual tapdeck and AM/FM Radio plus two speakers, \$100. IBM Selectric Type-writer (black) including 3 elements, \$100. Call Carole, ext. 12006 or 829-6460 and leave message. (9/23)

16' Glasspar runabout with 70 h.p. Mercury outboard engine and Cox trailer. Well-maintained

and in excellent condition. \$2,000 or best offer. Call ext. 12597 or 565-0864. (9/23)

In sets only: 4 volumes, *R.E. Lee* by Douglas Southall Freeman, \$75; 3 volumes, *Lee's Lieutenants* by Freeman, \$75; 6 volumes, *George Washington* by Freeman, \$200; 6 volumes, *Jefferson* by Dumas Malone, \$150. Excellent condition, some in original covers. Call 229-3561. (9/23)

FOR RENT

Furnished room for rent to quiet, responsible female. Located 1 mile from Law School in wooded, park-like neighborhood. Non-smokers only. Rent negotiable in return for occasional pet care. Call 229-4761. (9/9)

2-BR house, newly renovated on 1.1 acre of land in Plainview. Approximately 25 miles from Gloucester. Outside pets only. \$400 per month plus month's deposit. Available immediately. Call 1-266-9218 after 5 p.m., Mon.-Fri. (9/9)

Furnished 2-BR, 2-bath ranch-style home in quiet residential section off Jamestown Rd., 5 minutes from campus. Central heat and AC, fireplace, hardwood floors, newly redecorated and painted. Lease, references and security deposit. \$850 per month plus utilities. No smokers. No pets. Available now. Call 1-442-9649. (9/9)

Skiffes Creek Terrace: 3-BR, 2-1/2-bath townhouse, 15 minutes from campus. All appliances, fenced-in back yard. \$575 per month, + utilities. Available immediately. Call Cindy, ext. 12636. (9/16)

HELP WANTED

Childcare: responsible person to care for kindergarten in our home in Port Anne, 3:30-6 p.m., 6 to 8 afternoons per month. Nonsmoker with own car. Long-term position for right person. \$5 per hour, cash. Call 253-1515. (9/9)

Professor is seeking a nanny/tutor/cook for two children from 4 to 10 p.m. Mondays and Wednesdays. Must have own transportation and be reliable and flexible. Call 253-5854 evenings. (9/9)

Child care for 4-month-old in my home or yours. Approximately 30 hours per week during

day. Must be nonsmoker, experienced with infants. References required. Call 229-8159. (9/9)

Tutor/After-school care for 3 children (4th and 8th grade). 3 to 4:30 p.m. 2-3 days per week. Must have own car. Call ext. 13695 or 12263 between 8 a.m. and 4:30 p.m. or 229-0158 after 5 p.m. (9/16)

Several positions for assistant production technicians are available in the office of Video Services. You'll learn how to use a video camera, create computer graphics and perform video editing. If you are interested, call Karen Dolecki in Video Services for information at 12394. (9/16)

Person with car to pick up two children at off-campus child care and take one child to dance class in Williamsburg. Wait with second child approximately one-half hour until I can meet her. Class is at 5:30 on Tuesdays, so you will need to leave campus about 4:45. Also need additional babysitting. Call Nancy at 221-2743 days and 564-9391 evenings. (9/16)

Sitter for faculty member's 6-year-old; various times during semester. Call 229-0244 or ext. 13912. (9/16)

Part-time job available: lab technician in plastic research facility in Newport News. Flexible 15-30 hours per week at \$8-9 per hour. Science background preferred. Contact Tom Burke or Alan Fontanares at 888-1700. (9/23)

ARTICLES WANTED

Deck or patio furniture, fair to good condition, cushion or padded chairs and round table; no wicker, wrought iron, or picnic tables please. Reasonably priced. Call Patty at 220-4802. (9/16)

Used gas lawn mower, push type, easy to start, reasonably priced (under \$50). Call Patty at 220-4802. (9/16)

Electric clothes dryer in good condition. Must be reasonably priced to fit in student's budget. Call Carol at 221-8385 after 5 p.m. (9/23)

ROOM WANTED

Visiting female New Zealand librarian needs small furnished apartment or share a home within walking distance to campus or convenient to public transportation, October 25-February 9. Contact Nancy Marshall, Swem Library, 221-3055. (9/16)

ROOMMATE WANTED

Housemate needed for 1 room in large 3-BR, 1/1-2-bath townhouse, 3 miles from campus. All

house privileges. Smoking O.K. \$225 per month, plus 1/3 utilities. No lease, \$100 deposit required. Prefer senior, grad or young professional male. Call Brian Connolly at 220-1831 between 11 a.m.-3 p.m. (9/9)

Housemate: \$325 per month. Includes completely furnished bedroom, study, kitchen/microwave, cable TV/VCR, linens, shared bath, washer/dryer and utilities. 30 minutes from campus/possible carpool. No smoking/pets. Call 890-2309 or ext. 12356. Available immediately, lease negotiable. (9/9)

To share 3-1/2-room Peppertree condominium. Own BR, kitchen with dishwasher, washer/dryer, microwave, large living room, furnished, wall-to-wall carpeting. \$250 per month + half utilities. Call Peter at 229-8779. (9/16)

'89 W&M grad. seeking 1 or 2 non-smoking grad./law/professional(s) or mature undergrad(s) to rent 2 rooms in 3-BR/2-bath house. Fully furnished except bedrooms (waterbed avail. for use). Located off I-64 at Ft. Eustis exit. Available immediately. Flexible lease, \$185 sm. room, \$215 lg. room, shared utilities, plus 1 month rent deposit. Call Alan at (H) 877-9762 or (O) 888-1700. (9/23)

RIDE WANTED

Carpool to Norfolk starting next academic year. Leave message at ext. 13538. (9/23)

MISCELLANEOUS

Wanted: person to share ride from Ocean View to College, 8 to 5, Mon.-Fri. Call ext. 12582 or 588-8242. (9/9)

Free to good home: 11-month-old black lab puppy, female, neutered, all shots. Call Lee Foster, ext. 11182 (days) or 565-1029 (evenings). (9/9)

Wanted: an outlet to sell hand-made African quilts, ranging in price from \$250 to \$500. Call Sky Cline at ext. 15157. (9/23)

Sailing and diving trip to the Bahamas week of Dec. 26-Jan. 1. Leave from Miami on sailboat. \$635 includes everything except diving gear. Call 253-1596. (9/23)

SERVICES

Child care/tutoring: responsible, experienced mom/teacher will care for your child in my home. Have two children of my own; Virginia state certified, preschool-8th grade. Hours negotiable. Call 564-0173. (9/23)

EMPLOYMENT

The following positions at the College are open to all qualified individuals, unless otherwise noted. Visit the Office of Personnel Services, Thiemes House, 303 Richmond Road, for information, a listing of vacancies and application forms, Monday-Friday, 8 a.m. to 4 p.m. Call ext. 13150. All applicants must submit a completed Commonwealth of Virginia Application form to the Office of Personnel Services.

Deadline for applying for the following positions is 5 p.m., Friday, Sept. 11, unless otherwise noted. Postmarks will not be honored.

Housekeeping Worker (unclassified)—\$4.97 per hour, part time, approximately 30 hours per week. Shift begins 5 a.m. Location: Facilities Management.

Housekeeping Worker (unclassified)—\$4.97 per hour, part time, approximately 30 hours per week. #H210. Location: Residence Life.

Office Services Assistant (unclassified)—\$6.49 per hour, part time, approximately 20 hours per week. #H429. Location: Student Health Center.

Office Services Assistant (unclassified)—\$6.49 per hour, part time, approximately 35 hours per week, mid-August through April. #H380. Location: Career Services.

Secretary Senior (unclassified)—\$7.10 per hour, part time, approximately 30 hours per week. #H126. Location: VIMS (Physical Sciences).

Research Associate (unclassified)—\$7.10 per hour, part time. Hours of work determined by teaching section assignment (Tuesdays and Thursdays). Three positions available. *Restricted appointments with funding subject to renewal May 31.* Location: Modern Languages.

Costumer (unclassified)—\$8.48 per hour, work schedule irregular, will involve frequent evening hours. #H074. Location: Theatre and Speech.

Office Services Supervisor (Grade 6)—Entry salary \$16,135. #N030. Location: Bookstore.

Programmer/Analyst (Grade 12)—Entry salary \$27,538. #683. Location: Computer Center.

Police Officer (Grade 8)—Entry salary \$19,283. #528. Location: Campus Police.

Accountant (Grade 9)—Entry salary \$21,079. #425. Location: Bursar's Office.

Marine Scientist (Grade 9)—Entry salary \$21,079. *This is a restricted appointment with funding subject to renewal June 30.* #039. Location: VIMS (Environmental Sciences).

Office Services Specialist (Grade 5)—Entry salary \$14,760. #454. Location: Admissions.

Fiscal Assistant (Grade 5)—Entry salary \$14,760. #N079. Location: Advancement Systems. *Deadline Sept. 18.*

Information Officer A (Grade 8)—Entry salary \$19,283. #N067. Location: University Relations. *Deadline Sept. 18.*

Grounds Supervisor (Grade 8)—Entry salary \$19,283. #637, #664. Location: Facilities Management. *Deadline Sept. 18.*

Carpenter Foreman (Grade 8)—Entry salary \$19,283. #100. Location: VIMS (Facilities Management). *Deadline Sept. 18.*

Police Captain (Grade 11)—Entry salary \$25,191. #274. Location: Campus Police. *Deadline Sept. 18.*

CALENDAR

Campus

Wednesday, Sept. 9

Exhibit opening: "Puttin' On The Dog," Zollinger Museum, Swem Library. **Lecture:** "The Dog in Ancient Greece: Hunter, Worker, Friend," Linda Collins Reilly, associate professor of classical studies, Botetourt Theatre, Swem Library, 5:30 p.m. Reception to follow, sponsored by David A. Barley '64, owner of Agape Animal Care.

Lecture: "Illumination in Context: Manuscripts and Their Readers in the Late Middle Ages and Renaissance," Elizabeth Burin, Muscarelle Museum, 5:15 p.m.

Lecture: Friends of Library, Swem Library, 5:30 p.m. to 7:30 p.m.

Women's Soccer vs. Univ. of Maryland: Barksdale Fields, 7:30 p.m.

Thursday, Sept. 10

Faculty-wide meeting: Millington Hall 150, 3:30 to 4:30 p.m.

Saturday, Sept. 11

Dedication of the Lettie Pate Evans Whitehead Residences and the Spalding courtyard and Gardens: adjacent to the Marshall-Wythe School of Law, 3 p.m. Reception to follow.

Saturday, Sept. 12

Football vs. VMI (Athletic Education Foundation Day), Zable Stadium, 1 p.m.

Ewell Concert Series: Ilya Kaler, violinist; Ewell Recital Hall, 8 p.m. General admission at door, \$2. W&M students with ID admitted free.

Sunday, Sept. 13

Mass: Catholic Student Association, Rogers 100, 10:30 a.m. to 11:30 a.m.

Films: "The Medieval Mind" (26 min.); "The Book of Kells" (21 min.), Muscarelle Museum, 4 p.m.

Monday, Sept. 14

Gypsy-D Jewelry Sale, Back Lobby, 9 a.m. to 6 p.m.

Christopher Wren Association: Opening Convocation, Wightman Cup Room, William and Mary Hall, 2 p.m.

Films: "The Medieval Mind" (26 min.); "The Book of Kells" (21 min.), Muscarelle Museum, 4 p.m.

Meeting: Society for Creative Anachronism, Tucker 216, 7 p.m. to 9 p.m.

Concert: Williamsburg Symphonia, PBK, 8:15 p.m. Ticket prices range from \$12 to \$17. For information, call 229-9857.

Tuesday, Sept. 15

Lecture: "The Goettingen Model Book," Barbara Watkinson, Muscarelle Museum, 5:15 p.m.

Meeting: Circle K, Tucker 120, 7 p.m. to 8 p.m.

Mass: Catholic Student Association, Wren Chapel, 7 p.m. to 7:30 p.m.

Meeting: Students for Alternatives to Abortion, Tucker 301, 8 p.m. to 10 p.m.

Wednesday, Sept. 16

Prayers at Noon worship service, sponsored by Campus Ministers United (CaMU), Wren Chapel, noon. For information, call 229-6832.

Student Association Speakers Series: The Rev. Jesse Jackson, W&M Hall, 8 p.m. Tickets: general public, \$10; students, \$5; Faculty/Staff, \$8; available at W&M Hall (ext. 13340) and Ticketmaster locations.

Women's Soccer vs. Mary Washington College: Busch Field, 5 p.m.

Men's Soccer vs. VMI, Busch Field, 7:30 p.m.

Thursday, Sept. 17

Deadline for submission of applications for minor research grants. For information, call ext. 13967.

Town & Gown luncheon: "The Perot Phenomenon," Jack D. Edwards, professor of government, CC ballroom, 12:15 p.m. Call ext. 12640 for reservations.

"Bells Across America": A salute to Constitution Week. Wren bell will be rung at 4 p.m.

Commonwealth Center Seminar Series: "Vying for Visibility: Race, Class and Gender in American Histories," Nancy Hewitt, Dept. of History, Duke University, Botetourt Theatre, 5 p.m.

Friday, Sept. 18

Pizza Hut-Tribe Soccer Classic: W&M vs. West Virginia University, 7:30 p.m.; ODU vs. Brooklyn, Busch Field, 5 p.m.

Faculty Barbecue, Wren Yard, 6-8 p.m.



Lecture Tonight To Open Exhibit

Although the canine exhibit in the Zollinger Museum of Swem Library, "Puttin' On The Dog" has been getting lots of press and appreciative comments from visitors, the exhibit will have its formal opening tonight.

Linda Collins Reilly, associate professor of classical studies, will talk about "The Dog in Ancient Greece: Hunter, Worker, Friend," at 5:30 p.m. in the Botetourt Theatre of Swem. Her lecture will be followed by a reception in the Botetourt Gallery, sponsored by David A. Barley '64, owner of Agape Animal Care in Williamsburg.

Many items in the exhibit were taken from the library's Peter Chapin and Horowitz collections.

Pictured above are Susan Riggs, manuscript cataloger and Ellen Strong, assistant curator for manuscripts/rare books, who arranged the exhibit.

Saturday, Sept. 19

Constitution Week: A program of 18th century colonial music in the Wren Chapel by James Darling, organist, 11 a.m.

Registration for Children's Art Classes, Muscarelle Museum, 10 a.m.-noon.

Football vs. Boston Univ., Zable Stadium, 1 p.m.

Pizza Hut-Tribe Soccer Classic: West Virginia University vs. ODU, Busch Field, 5 p.m.; W&M vs. Brooklyn, 7:30 p.m.

Estuaries Day 1992, sponsored by York River State Park, Div. of State Parks, Dept. of Conservation and Recreation, Chesapeake Bay National Estuarine Research Reserve System in Va. and VIMS; York River State Park, 10 a.m. to 5 p.m. Performances of "Secret Lives of the Estuary," by New York's Arm-of-the-Sea Theater, 11 a.m., 1 p.m., 3 p.m.; auction of "Marsh Into Spring" estuaries quilt, 2 p.m. Call 566-3036.

Sunday, Sept. 20

Muscarelle Museum films: "The Year 1200", and "Images Medievales," 4 p.m.

Exhibits

Muscarelle Museum

Aug. 22 through Oct. 11

"Late Medieval and Early Renaissance Illuminated Manuscripts"

"Pattern, Color and the Potter's Hand: Islamic Ceramics from the James L. Greaves Collection"

"Robert Keyser's Watercolors of a Persian Bowl"

Zollinger Museum, Swem Library

Through Nov. 30

"Puttin' on the Dog"

Williamsburg Regional Library/Arts Center

Through Sept. 30

"Archaeology Along the Chickahominy," sponsored by the William and Mary Center for Archaeological Research, for Virginia Natural Gas.

Community

This column is devoted to events in Williamsburg and surrounding areas that would be of interest to members of the College community. We will accept entries, on a space available basis, of concerts, lectures, exhibits and other events open to the general public.

Wren Chapel Recital: organ recital of 18th-century music, Wren Chapel, College of W&M, every Saturday, 11 a.m.

Bruton Parish Church by candlelight every Tuesday, Thursday and Saturday, 8 p.m.

Colonial Williamsburg

DeWitt Wallace Decorative Arts Gallery

Hours: 10 a.m. to 6 p.m., daily. For information, call 220-7724.

Jamestown Settlement

Open daily 9 a.m. to 5 p.m. Call 229-1607.

Exhibit: "Discovering America" (through March 15, 1993). Planned in conjunction with the 500th anniversary of Columbus' initial landfall in the New World, the exhibit acknowledges the significance of the Columbus "discovery" in introducing the "new" world to the "old." Claims of Asian, African and European contact with the Americas before the voyages of Christopher Columbus are examined. Admission: \$7, adults; \$3.50, children (6 through 12). For more information, call 253-4838.

On the Hill/Yorktown Arts Foundation

Hours: Monday through Saturday, 10 a.m. to 5 p.m., Sunday, 1 to 5 p.m. Call 898-3076.

20th Century Gallery

Hours: 11 a.m. to 5 p.m., Tuesday through Saturday; noon to 5 p.m., Sunday.

Exhibit: Watercolors by Barbara Thelin Preston of Burke and paintings by Carolyn Parker of Frederick, Md. Sept. 1 through Sept. 26.

Yorktown Victory Center

Hours: 9 a.m. to 5 p.m., daily. Call 887-1776.

Exhibits and films: Yorktown's role in the American Revolution; "The Road to Yorktown" (film); and the "Witnesses to Revolution" gallery. A new section of the gal-

lery focuses on African-Americans' participation in the Revolution. Exhibit: "The American and British Foot Soldier, 1775-1785."

Thursday, Sept. 10

Williamsburg Women's Chorus rehearsals for fall season begin, 9:30-11:30 a.m., Williamsburg United Methodist Church, Choir Rehearsal Room. For more information, call Jan Sloan, 874-2653.

Friday, Sept. 11

Discovering America Lecture: Eugene L. Sterud, "Viking Exploration and Settlement in the New World," Williamsburg Regional Library, 8 p.m.

Saturday, Sept. 12

Kiwanis Club of Williamsburg Shrimp Feast, Lake Matoaka Shelter, 4 p.m. to 7 p.m.

September Sportsfest Offers Prizes To Fans

Sports fans are being offered a series of prizes by W&M Promotions & Marketing for attendance at fall events. A grand prize of a Macintosh Power Book Computer, first prize of a color TV set, second prize of a CD player and a participation prize from the College Deli for all who attend four Fall events. Participants must present their W&M ID at the gate up until 15 minutes after game time.

To be eligible, participants must attend the Sept. 12 football game vs. VMI, 1 p.m. in Zable Stadium; the Sept. 18 men's soccer match against WVU, 7:30 p.m. at Busch Field; the Sept. 25 field hockey game against Georgetown, 5 p.m. at Busch Field; and the Sept. 26 volleyball game against Notre Dame at 8 p.m. (no site listed).

For more information call W&M Promotions & Marketing at ext. 13353.

Grant Application Deadlines

Application forms for faculty Summer Research Grants, Semester Research Grants, and Minor Research Grants (NOTE: undergraduate and graduate students are also eligible for Minor Research Grants, which normally do not exceed \$500) are available from the Grants Office, James Blair 201, or call Anne Womack at ext. 13967 to receive one in campus mail.

Applicants should read the policy and principles statement attached to the applications before submitting a proposal.

Deadlines will be strictly enforced. The deadlines are:

Minor Research Grants—**Sept. 17 and Jan. 30, 1993**

Semester Research Grants—**Oct. 1.**

Summer Research Grants—**Oct. 22**

WILLIAM & MARY NEWS

The William & Mary News is issued weekly during the school year for faculty, staff and students of the College and distributed on campus Wednesday afternoons.

News items and advertisements should be delivered to the News Office, James Blair 310A (221-2639), no later than 5 p.m. the Friday before publication. Notices for the calendar should be delivered to the News Office no later than 5 p.m. the Wednesday before publication.

Barbara Ball, editor

Marilyn Carlin, desktop publishing

Publications Office, production

News deadline: Fridays, 5 p.m.