

Non-profit Organization
U.S. Postage Paid at Williamsburg, VA
Permit No. 26

WILLIAM & MARY

A WEEKLY NEWSPAPER FOR FACULTY, STUDENTS AND STAFF

NEWS

VOLUME XXII, NUMBER 10 • WEDNESDAY, OCTOBER 28, 1992

Full text of the Faculty Assembly's Endorsement Resolution is carried on page 4.

Faculty Assembly Endorses Bond Issue

The Faculty Assembly has gone on record endorsing the passage of the bond referendum on the Nov. 3 ballot adding its voice to a growing list of supporters that includes major newspapers across the state.

The Faculty Assembly, which represents the faculties of the College, including the Virginia Institute of Marine Science/School of Marine Science at Gloucester Point, voted unanimously for the resolution.

Said Assembly President Evon Ruzecki, associate professor of marine science, "Passage of the bond issue is crucial because it addresses needs that affect all Virginians not just a few. We all share a stake in education, parks and

recreation and care for those with mental disabilities."

Ruzecki said the Assembly, in its endorsement resolution, had stressed the economic benefits a yes vote would bring to the state, including creation of 3,600 new jobs and \$22 million in new revenue.

The Assembly resolution also notes that there have been no state-supported capital improvement programs for higher education since 1986, yet from that year to the present enrollment in Virginia colleges and universities has grown by 40,000 and by the year 2,000 another 65,000 students are expected to seek enrollment.

Bond requests for William and Mary include \$6,107,600 for undergraduate

science facilities; \$2,972,500 for facilities management; \$8,510,500 for a marine science toxicology/pathology facility; \$5,290,000 for renovation of James Blair Hall; \$2,772,200 for improvement of campus utility systems; and \$166,100 for handicapped accessibility to be added to the elevator in Andrews Hall.

The General Assembly's intent is that state lottery funds will be set aside to pay the annual debt service on the bonds. If voters approve the current bond issue they would be following the pattern of voters in 1968 and 1978. All money in the bond issue will be invested entirely in capital improvements. None of the proceeds will be used for operating expenditures of state government or its agencies.

Town & Gown Luncheon

"Puttin' on the Dog"—Selections from the Chapin and Horowitz Canine Book Collections" will be presented by Susan Riggs, special collections, Swem Library, at the Oct. 29 Town & Gown luncheon at 12:15 p.m. in the Campus Center ballroom.

President Sullivan will speak at the Nov. 6 luncheon.

Reservations may be made by calling ext. 12640 before noon on the Tuesday preceding the luncheon.

Benefits Update

Addition To PCP List

Gregory Biernacki
M7446 Gen. Practice

Benefit Deadlines

Flexible reimbursement account and optional retirement plan election forms are due in the benefits office by Oct. 31.

Muscarelle Purchase Honors Lucille Walton

As a memorial to the late Lucille Walton, the Muscarelle Museum has purchased a silkscreen print titled *Pep-pers*, 1989, by contemporary print-maker Donald Sultan.

The work was purchased with funds contributed in memory of Mrs. Walton, who was a charter member and second president of the Council of the Muscarelle Museum of Art.

Mrs. Walton was instrumental in establishing the popular winter tea, which is now an annual event, and was a dedicated and enthusiastic docent, contributing hundreds of hours to the development of tour programs and the Museum's children's art classes.

Two Named Commonwealth Fellows By State Council

The State Council of Higher Education has named graduate students John Barrington and Sharon Zuber 1992 Commonwealth Fellows. Each winner receives a \$5,000 award, made possible by private contributions.

Barrington, a Ph.D. candidate in the department of history, is currently working on his dissertation titled "Anti-Catholicism and National Identity in British America, 1740-1783." A 1982 Oxford University graduate, he is currently teaching a freshman history course at Christopher Newport University.

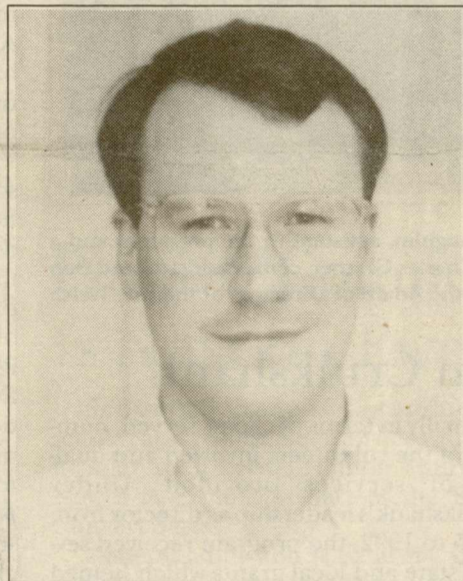
Barrington has received several awards, including a summer research scholarship from the Commonwealth Center for the Study of American Culture, 1991 and 1992, and a scholarship from the National Society of Colonial Dames of America in the Commonwealth of Virginia, 1991.

Zuber, a Ph.D. candidate in the American studies program, recently co-authored a paper titled "Listening to Silences: New Essays in Feminist Criticism," which will be included in a collection to be published by Oxford.

She is presently a part-time instructor of English and plans to complete her Ph.D. by 1995. She has taught at Christopher Newport University, George Williams College and Indiana University-Purdue University/Indianapolis.

Zuber received her A.B. degree from Franklin College, Franklin, Ind., and her master's from Butler University, Indianapolis.

A companion to the Council's annual Outstanding Faculty Awards program, the Commonwealth Fellows program honors exceptional Virginia residents who are enrolled as doctoral students in Virginia's public colleges and universities and who intend to become teaching faculty. This year's 11 winners were selected from a pool of 44 candidates by a



John Barrington



Sharon Zuber

committee of this year's Outstanding Faculty Award winners. Candidates are

nominated by the graduate school deans of their institutions.

To the William and Mary Community:

I wish that I could thank personally each of you who participated in the inauguration events. It was a most memorable day for Anne, our families, and for me. I am truly grateful for your many expressions of support as I begin my term of service as your 25th President.

The spirit of the inauguration ceremony signified far more than a tribute to one individual or office. I hope that the ceremony provided an occasion for the entire William and Mary community—students, faculty, staff, alumni and friends—to celebrate the rich heritage of our College and to reaffirm our unique roles in achieving its future greatness.

*In this spirit, I look forward to working with every one of you.
Most cordially,*

Timothy J. Sullivan
President

REMINDERS

VOTE!
Tuesday,
Nov. 3.

NEWS

PAGE 4

STUDENTS

PAGE 5

ALUMNI

PAGE 7

New Scholarship Honors
Reves Director

Community Outreach
Week Begins Nov. 2

Wicklender Authors Book
On Monroe Place Names
For Ash Lawn-Highland

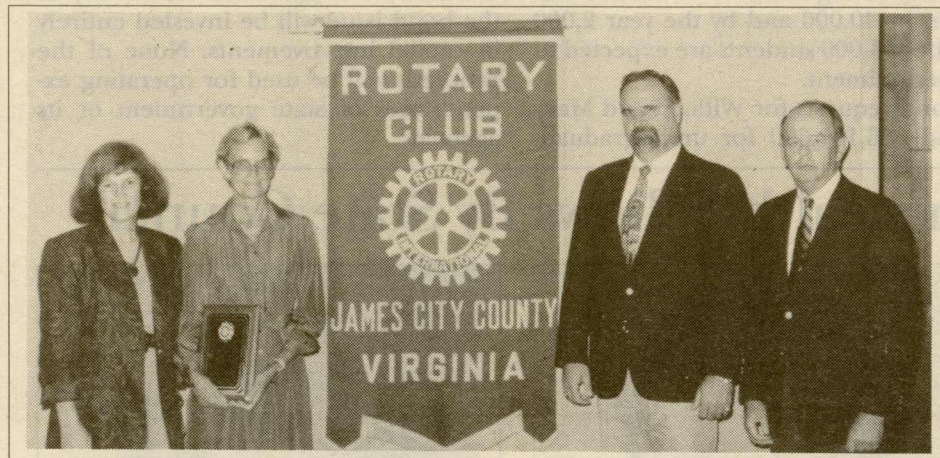
NEWSMAKERS



Class Of '67 Gives To Library

The Class of 1967 has made a commitment of more than \$173,000 as its 25th reunion gift to the College. Of that gift, \$100,000 will support Swem Library and \$25,000 will go to the proposed expansion of the Alumni House in which the Class of 1967 Office will recognize classmates who served or died in Vietnam. The balance of the gift will fund a scholarship for students who experience a significant change in their financial situations while in school.

Two of the chief beneficiaries of the class gift, Swem Library and the Society of the Alumni, represented by University Librarian Nancy Marshall and Society of the Alumni Executive Director Barry Adams, pose with Larry White, class gift committee chair, and President Tim Sullivan '66 with a "promissory note" for \$173,000.



Pictured above, left to right are: Virginia McLaughlin, assistant to the president and a member of the JCC Rotary Club; Nan Cruikshank; Charles Glazner, club president; and Don Lashing, professor of education and president of the Board of Directors of the Rita Welsh Adult Skills Program.

Rotary Honors Nan Cruikshank

The Rotary Club of James City County presented its third annual Ideal Service Award to Nan W. Cruikshank, who recently retired as director of the Rita Welsh Adult Skills Program.

Sponsored by the College, the program provides adult literacy development to members of the community. Direct services are provided by volunteers. Over the years, since its inception in 1979, the program has grown sub-

stantially in terms of clients served, number of the volunteers involved and quality of services provided. Under Cruikshank's leadership as director from 1985 to 1992, the program received several state and local grants which helped expand the program.

The Rotary Ideal of Service Award is given for vocational excellence and professional service in the workplace.

Beiras Named To Recycling Position

Joseph Beiras '92 has assumed the new position of College Recycling Coordinator and is working under Roy Williams, associate director for facilities management.

His duties include administering the campuswide recycling program as well as education and promotional programs.

Any department that would like to be involved in recycling or anyone with questions regarding recycling may call Beiras at ext. 12274.



Joseph Beiras '92

Xenophontos Awarded Honors

Christos Xenophontos '91, who graduated with high honors in mathematics, was the first student from Cyprus to attend the College. He is currently a graduate student at the University of Maryland in Catonsville, where he is completing his M.S. degree. In January he will begin the Ph.D. program in mathematics at the University of Maryland.

A paper based on work Xenophontos undertook for his senior honors project at William and Mary, with Charles R. Johnson, Class of 1961 Professor of Mathematics, has been accepted for publication. "Irreducibility and Primitivity of Perron Complements: Application of the Compressed Directed Graph," will appear in *Sparse Matrix Computations: Graph Theory Issues and Algorithms*, one of a series on mathematics and its applications, by the Institute for Mathematics and Applications, to be published by Springer-Verlag.

Psychology

Shaver Co-Authors New Textbook

Kelly G. Shaver, professor of psychology, is co-author of a new textbook, *Psychology*, which has been favorably reviewed and characterized by one reviewer, Milton Rosenbaum at the University of Iowa, as "the best introductory psychology text I have encountered."

What sets the new book apart from other introductory texts is the novel approach the authors have taken. Shaver and co-author Roger M. Tardy of Bucknell University have chosen to focus on six ageless questions upon which psychologists agree, but which have never been definitively answered.

The questions include:

Are mind and body one entity or separate and distinct?

Do we freely choose our actions, or are they determined?

How do our minds acquire, organize and use knowledge?

What shapes our behavior more, heredity or environment?

What does it mean to be an individual, yet part of a group?

Shaver and Tardy have used these six questions as a framework for the course in beginning psychology. Shaver said that initially he and Tardy planned to shape

the text around a debate of psychological issues, each taking opposite views of a question; Shaver the social, Tardy the



Kelly Shaver

biological. The authors found that there were not enough things on which they disagreed, and when they did the resolu-

CONTINUED ON PAGE 4.

Departments & Schools

Psychology

Joseph Galano, associate professor, was recently invited by the Carnegie Corporation to participate in a national meeting to explore ways in which America's communities and community-based organizations can promote positive youth development. Carnegie Corporation will convene 200 of the nation's leaders from diverse sectors of the our society to consider effective strategies for helping adolescents make constructive use of their non-school hours. According to Galano, these unsupervised hours present both risks and opportunities to our young people, yet they are virtually ignored in America's debates about public and social policy. Carnegie Corporation seeks to fill this void through the publication of a national report and call to action: *A Matter of Time: Risk and Opportunities in the Non-School Hours*. Professor Galano will be representing the Virginia Council on Coordinating Prevention and the Virginia Prevention and Promotion and Advisory Council.

School of Education

James M. Patton, associate dean and associate professor, co-edited a special issue of the journal *Exceptional Children*, devoted to "Issues in the Education of African-American Youth in Special Education Settings." The special issue was published in October and is circulated to over 60,000 readers. His article, "Assessment and Identification of African-American Learners with Gifts and Talents," was included in the publication.

On Oct. 2, Patton was the keynote speaker at a student assembly at Thomas Jefferson High School in Richmond, on the occasion of the installation of senior class officers.

Rachel C. Janney, assistant professor, and Luanna H. Meyer of Syracuse University co-authored a chapter titled "School Consultation to Support Students with Behavior Problems" in *Integrated Educational Programs in Advances in School Psychology*, volume VIII, edited by Thomas R. Kratochwill, Stephen N. Elliott and Maribeth Gettinger (Hillsdale, N.J.: Lawrence Erlbaum Associates, 1992).

William Losito, Heritage Professor, presented "Myth and Human Well-Being in a Multicultural Society," at the annual

meeting of the South Atlantic Philosophy of Education Society at the University of North Carolina at Chapel Hill, Oct. 9-10.

Charles Matthews, associate professor of counseling, wrote "An Application of General System Theory (GST) to Group Therapy," which appeared in the September issue (vol. 17, no. 3) of *The Journal for Specialists in Group Work*. He represented his alma mater, Davidson College, at the inauguration of President Sullivan.

Joyce VanTassel-Baska, director of the Center for Gifted Education, is the editor of a new book, *Planning Effective Curriculum for Gifted Learners*, (Denver, Colo.: Love Publishing Company). Three of the four chapter contributors are also members of the School of Education: Gail McEachron-Hirsch "Serving the Learning Disabled Gifted Students Through Collaboration;" Virginia K. Laycock wrote "Curricula for Exceptional Children: A Special Education Perspective"; and Lori Korinek wrote "Gifted Children with Specific Learning Disabilities." In the appendix, sample curriculum units include the work of graduate student Jill Land and Saturday Enrichment Program science teacher Beverly Sher.

Robert A. Gable, Lori Korinek and Virginia K. Laycock co-authored Chapter seven, "Collaboration in the Schools: Ensuring Success" in *Successful Mainstreaming: Proven Ways to Detect and Correct Special Needs*, edited by Joyce M. Choate, (Boston: Allyn and Bacon, 1993).

John R. Thelin, Chancellor Professor, and Lawrence L. Wiseman, professor and chair of the department of biology, co-authored "The Numbers Game: The Statistical Heritage in Intercollegiate Athletics" in *Monitoring and Assessing Intercollegiate Athletics*, edited by Bruce I. Miller and Richard D. Howard (San Francisco: Josey-Bass, Number 74, Summer 1992).

Thomas War, assistant professor, and Antonis Kastsyannis, University of Nebraska, wrote the feature article in *Rase*, Volume 13, issue 5, Sept./Oct. 1992, pp. 50-55, 62, on "Parent Participation in Special Education: Compliance Issues as Reported by Parent Surveys and State Compliance Reports."

NOTES

Horvath Speaks

Steven M. Horvath, director of the Environmental Stress Institute, University of California, Santa Barbara, noted physiologist and author of more than 500 scientific publications, will speak on "Influence of Age and Gender in Response to Exercise in Polluted Environments," in a public forum on Wednesday, Oct. 28, at 7 p.m., Rogers 100. The lecture is sponsored by Morton Publishing Company, the department of kinesiology and the Faculty of Arts and Sciences lecture committee.

Graduate School Representatives Here Nov. 11

Representatives from graduate and professional schools will be in William and Mary Hall (Concourse Level) from 1 to 4 p.m. on Wednesday, Nov. 11 to talk with students and other interested individuals. All students, regardless of academic status, are encouraged to take advantage of this excellent opportunity to obtain firsthand information regarding these institutions. For more information stop by or call the Office of Career Services, which is sponsoring the event, ext. 13240.

Clunker Still Sought

The High-Energy Physics Experimental Group is still in need of the gift of an automobile—nothing fancy—for basic transportation and the hauling of equipment from Williamsburg to experiment sites at Brookhaven National Laboratory and CEBAF.

Appropriate acknowledgement for tax purposes will be gratefully provided.

For details contact Robert E. Welsh at ext. 13505.

Reves Coffee Hour

A forum on different religions of the world be the program at the Reves Center Coffee hour Friday at 5 p.m. in the first floor lounge.

Friends Book Sale

The annual book sale by The Friends of the Library will be held from 9 a.m. to 4 p.m., Saturday, Nov. 21 and 1 to 5 p.m., Sunday, Nov. 22 in the Botetourt Gallery of Swem Library.

The first two hours on Saturday are reserved for members only. Memberships may be purchased at the door.

Hard cover books will be \$3; paperbacks, 50 cents. All books will be half price during the last two hours of the sale on Sunday.

Donations of books (no magazines) are welcome. Donors are asked to call John Haskell at ext. 13054.

Cissy Patterson Lecture

Dr. Margaret Wright of Bell Laboratories will present the Cissy Patterson Lecture in Undergraduate Mathematics Thursday, Oct. 29 in Small Hall 113 at 2 p.m. Her topic will be "You Can't Top This: Using Mathematics to Find What's Best."

This is a correction from last week's News, which incorrectly listed the topic of Dr. Wright's lecture. The News regrets the error.

Jazz Ensemble To Perform Nov. 6

The William and Mary Jazz Ensemble, Laura Rexroth conductor, will feature music made famous by the Stan Kenton Band, the Thad Jones/Mel Lewis Jazz Orchestra, Miles Davis and Maynard Ferguson in its fall concert at 8 p.m., Friday, Nov. 6 in Phi Beta Kappa Memorial Hall.

Admission is \$2 at the door. Block seating may be arranged for groups of 10 or more.

The program will include such works as George Gershwin's "I've Got a Crush on You," a high-energy arrangement of Jerome Kern's "The Song Is You," "La Suerte De Los Tontos," from Johnny Richard's *Cuban Fire Suite*, and great standards including Miles Davis' "Seven Steps to Heaven" and Don Menza's "Groove Blues." The William and Mary Combo from the Ensemble will also perform a set of tunes.

Now in its third year, the Ensemble is a 25-piece big band that performs all styles of jazz. Student soloists are featured prominently in the swing, rock, Latin, ballad, blues, and symphonic jazz repertoire. The Ensemble plays annually for the Occasion for the Arts in Williamsburg, in addition to campus concerts. Most recently the Jazz Ensemble played at the reception following the inauguration of President Timothy Sullivan.

For further information, call Laura Rexroth at 221-1086.

Project Mandala Plans Conference

Project Mandala for Special Populations of Gifted Learners, a federally funded grant program, has been operating at the College for the past three years through the School of Education. It is now in its final phase of research and demonstration, and will sponsor culminating activities for participating students, families and school division personnel over the next three weeks.

On Friday, Nov. 6, Project Mandala will sponsor its third annual conference focusing specifically on serving the needs of at-risk learners. At-risk populations served by the Project are low-income, culturally diverse and handicapped gifted learners. Some 85 percent of Mandala students are African Americans; 68 percent come from low-income families. To date, approximately 175 people have registered to attend the conference and Joy L. Baytops, coordinator for Project Mandala expects that more than 200 will attend.

Individuals registered for the conference are coming to Williamsburg from Pennsylvania, Washington, D.C., North Carolina and throughout Virginia.

Ten conference group sessions will focus on specific issues dealing with curriculum, assessment, counseling and community outreach to better meet the needs of these particular learners.

The conference luncheon will feature testimonials from parents, students and teachers who have been associated with the Project.

A culminating message will be presented by William Boshier, superintendent of schools for Henrico County.

On Sunday there will be a session for families and students from 9 a.m. to noon in Millington 150. James M. Patton, associate dean of the School of Education and director of Project Mandala will present a brief message to the parents and guests. A student program will follow, at which time trophies and special

CONTINUED ON PAGE 7.

Orchestra Concert To Feature Works By Cage, Schubert and Liszt

The William and Mary Orchestra, Edgar W. Williams Jr., director, will present its Fall concert on Wednesday, Nov. 4 at 8 p.m. in Phi Beta Kappa Memorial Hall.

Tickets are \$2 at the door. William and Mary students will be admitted free.

The 65-piece all-student orchestra will perform three works: Franz Schubert's Symphony in c minor, "Tragic"; John Cage's "The Seasons" (1947); and Franz Liszt's Symphonic Poem No. 5, "Prometheus."

Schubert wrote the c minor symphony in 1816 at the age of 19. The young Schubert himself provided the title of "Tragic." Schubert's contemporaries declared the new work too much influenced by Beethoven and thus either too un-stylish, or, more generously, too ambitious an undertaking for a 19-year-old. As a result, the c minor symphony was neither performed nor published until

more than 20 years after the composer's death.

The Seasons, a ballet in one act (written for choreographer Merce Cunningham, with scenery and costumes by Isamu Noguchi), was given its first performance in New York City in 1947. The work had been commissioned by the Ballet Society of New York and was dedicated to its director, Lincoln Kirstein. At the time, Cage described "The Seasons" as "an attempt to express the traditional Indian view of the seasons as quiescence (winter), creation (spring), preservation (summer) and destruction (fall)."

Liszt's Symphonic Poem No. 5, "Prometheus," was written in 1850. The political strife and failed revolutions of the 1840s find voice in this High Romantic portrayal of Prometheus, the mortal who stole fire from the gods and paid a heavy price.



Neely Bruce

Pianist/Composer Neely Bruce Is Next on Ewell Concert Series

Renowned composer, conductor, scholar and pianist Neely Bruce will perform at Ewell Recital Hall on Thursday, Nov. 5 at 8 p.m., as part of the Ewell Concert Series.

General admission is \$2 at the door. W&M students with ID will be admitted free.

His program, titled "The Piano Music of Black Americans and Its Influence," will include "Elite Syncopations" by Scott Joplin; "Harlem Rag" by Tom Turpin; "Sponge" by W. C. Simon; "Frog-1-Moore Rag" by Ferdinand "Jelly Roll" Morton; "Village Bells Polka" by Stephen Foster; "Evening Chimes Reverie" by Bert L. Fulton; "Chimes," a novelty rag, by Homer Denney; "The Lion Tamer Rag" by Mark Janza; "Three-Page Sonata" by Charles Ives; Composition No. 5 by Anthony Braxton; "Three Visions" by William Grant Still; "Heliotrope Bouquet" by Scott Joplin and Louis Chauvin; and Piano Rock Album by Neely Bruce.

A professor of music and American studies at Wesleyan University, Middletown, Conn., Bruce has composed more than 500 pieces. He has written two one-act operas; two concerti and other orchestral compositions; many keyboard works; more than 200 solo songs; a series of grand duos for various solo instruments and piano; pieces for tape, with and without live performance; and large-scale chamber works.

In recent years Bruce has composed music for films and has written original works for three documentaries.

As a member of the editorial committee of New World Records and founder and chairman of the New England Sacred Harp Singing and the American Music/Theatre Group, Inc., he has also worked indefatigably to promote American music of all periods.

The Ewell Concert Series is sponsored by the department of music and funded by the Association of Parents.

Careers Office Has Information On Presidential Management Intern Program

The Office of Career Services has information and application packages for graduate students to use in applying to the Presidential Management Intern (PMI) program. These may be obtained from the receptionist in Career Services, Blow Hall 123.

The application deadline is Dec. 1.

Each year, up to 400 interns receive two-year appointments to developmental positions throughout the federal gov-

ernment. PMI is considered one of the best opportunities to begin a career in the federal service.

Students with demonstrated commitment to public service, who complete or who expect to complete an advanced degree from an accredited U.S. college or university during the current academic year, are eligible to be nominated for the program.

Mrs. Moore Endows Bill Study Abroad Scholarship

A gift from Mrs. Fred H. Moore of Austin, Texas, will be used to establish the James A. Bill Study Abroad Scholarship Endowment at the College.

The endowment is named for the director of the Wendy and Emery Reves Center for International Studies at the College. Funds will be awarded to students to help them gain a greater appreciation for international issues by allowing them to spend time abroad. The scholarships will be awarded on both financial and academic merit.

Bill, a former Texas resident, said he was deeply honored by the named program, which could make a dramatic difference in the experiences of William and Mary students.

"No matter how much a person reads or learns in lectures, there is simply no substitute for living in a different part of the world as a way of understanding another culture," said Bill. "The new sights, sounds, smells and sensations transform an individual and widen a student's understanding. Studying abroad is an increasingly essential element in educa-

tion in this shrinking world."

William and Mary already offers 14 programs that send students overseas for study. The James A. Bill Study Abroad Scholarship Program is the first endowed overseas program. Additional contributions to the fund would help expand the program to benefit more students.

International studies has become an increasingly popular field of study for William and Mary students, especially since the creation of the Wendy and Emery Reves Center for International Studies in 1988.

Summer Apprenticeship In Archival Skills For Medieval Studies Scheduled For July At St. John's University

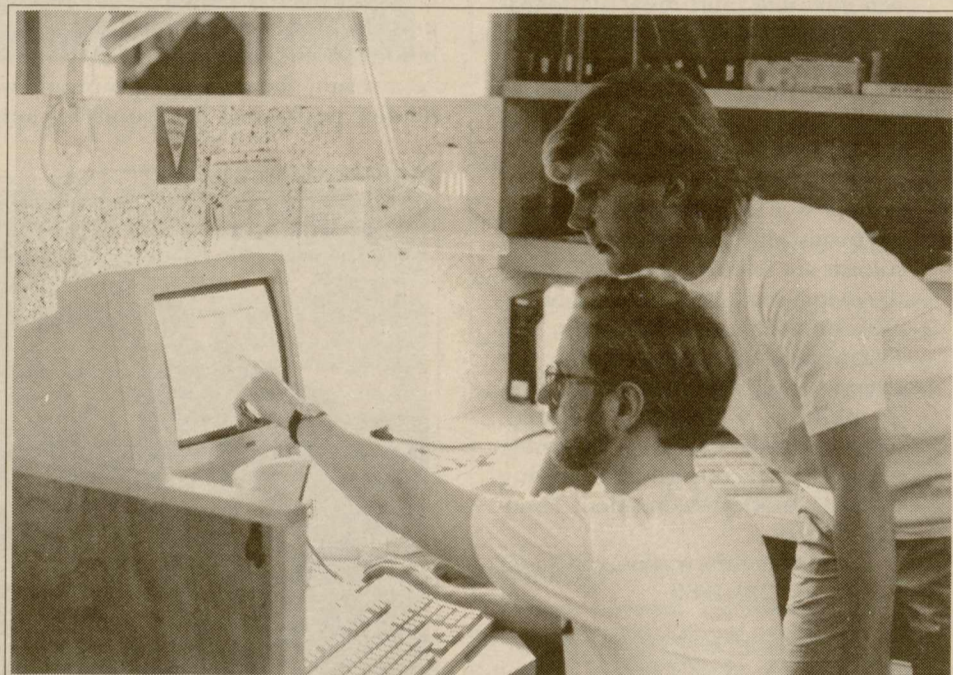
The Summer Apprenticeship in Archival Skills for Medieval and Renaissance Studies will be offered in July at St. John's University, Collegeville, Minn.

This is the second year for this undergraduate apprenticeship program, hosted jointly by William and Mary and St. John's.

George D. Greenia, director of the program in medieval and renaissance studies, established the program and conducted it as a visiting professor at St. John's.

The program is designed to take advantage of the extensive collections of the Hill Monastic Manuscript Library at St. John's. With vast holdings in manuscript facsimiles, secondary reference tools, catalogs and incipit card files, the Hill Library is one of the premier research centers for medieval studies in the world. The library's on-going project of microfilming entire collections of original manuscripts from throughout Europe makes its facilities extraordinary; more than 80,000 hand-written books and documents are preserved on film for ready access, as well as a comparable number of color images of manuscript decoration and illuminated miniatures.

Apprentices have access to computer work stations. In addition to a base configuration with MS-DOS and Windows, dBASE IV, WordPerfect and ToolBook are available to the apprentice as well as five study carrels equipped with VAX lines to facilitate bibliographic searches through the PALS (Minnesota Library)



Robert Lane gets assistance with his project on "Middle English Debate Poetry: The Owl and the Nightingale," from fellow student Michael Sinner of St. John's.

system.

In his report on the 1992 program, Greenia said that by summer 1994 "we can consider the possibility of turning this undergraduate experience into an annual graduate-level offering as well." The program, said Greenia, would admit "qualified students from master's and doctoral programs from North American universities for an intensive experience in archival skills, something rarely

available even in American and Canadian research institutions and nowhere with comparable facilities."

Students are reminded that in order to be eligible for the summer apprenticeship they must complete the interdisciplinary course #451 which is being offered in the spring semester; there are no prerequisites.

New Psychology Textbook Tackles Age-Old Questions

CONTINUED FROM PAGE 2.

tion was not clear. That led them to the decision that they could agree on enduring questions in psychology that had yet to be solved.

Many beginning texts, said Shaver, provide a history of psychology but do not spend much time talking about the philosophy of the discipline. The first chapter of *Psychology* is devoted to synopses of early theories and their proponents from Rene Descartes and dualism in the 16th century to Darwin's theory of evolution in the 19th century. Succeeding chapters take up the intricacies of psychology as a science, but the links with those who have advanced knowledge in the field are continued.

This is Shaver's third book. It has been designated a 1993 edition and will be available for classes next year.

Shaver is the author of three books on social psychology, co-author of two others and is author or co-author of more than 80 papers and research articles on attribution processes, psycholegal issues and entrepreneurship. His book, *An Introduction to Attribution Processes*, has been translated into Japanese. His most recent book is *The Attribution of Blame: Causality, Responsibility, and Blameworthiness*. In 1989, he was honored nominee in the Council for Advancement and Support of Education's Professor of the Year program.

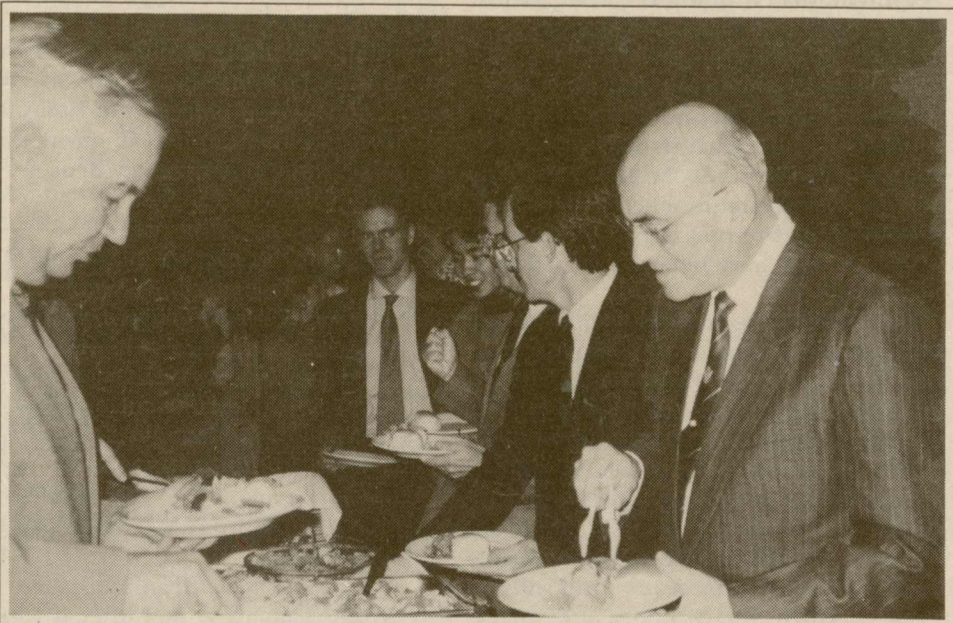
Shaver has served on research review committees for the National Science Foundation, the National Institute of

Mental Health and on a small business innovation research review committee at the National Institutes of Health. He has served on the editorial boards of the *Journal of Personality and Social Psychology* and the *Journal of Personality*, and currently serves on the program committee of the Eastern Psychological Association and the editorial boards of the *Journal of Applied Social Psychology* and *Entrepreneurship Theory and Practice*.

Co-author Tarpay received his master's

in psychology from William and Mary and a Ph.D. from Princeton. He taught at Williams College before joining the faculty at Bucknell. The idea of co-authorship began when Shaver was asked to do an outside evaluation of the Bucknell psychology department. He was later invited to give a colloquium.

As well as research, writing and teaching, Shaver also nurtures an interest in classic cars and drives a classy red 1965 Ford Mustang convertible.



Aquino Lecturer

The Honorable Jaime M. Saleh, Governor-General of the Netherlands Antilles (right), who delivered the Benigno Aquino Memorial Lecture Oct. 22, goes through the buffet line with Vinson H. Sutlive Jr., professor of anthropology.

Bond Issue

Endorsement Resolution

WHEREAS, Virginia's continued economic growth and development is dependent upon the Commonwealth's ability to provide for the needs of its citizens both now and into the 21st. century;

WHEREAS, Virginia voters will have the opportunity to approve three bond referenda on November 3 that will provide funds to construct and renovate the facilities necessary to serve the state's growing population;

WHEREAS, there have been no state-supported capital improvement programs for higher education since 1986, yet from that year to the present enrollment in our colleges and universities has grown by 40,000 and by the year 2000 another 65,000 students will seek enrollment in Virginia's colleges and universities;

WHEREAS, \$472.4 million is earmarked for the capital needs of higher education, providing badly needed classroom, laboratory and other teaching space, correction of life-safety code deficiencies, repairs to libraries, additions to computer centers, and other needs;

WHEREAS, providing for the needs of those citizens of the Commonwealth with mental disabilities is a responsibility of all Virginians;

WHEREAS, \$5.2 million is appropriated for the construction and renovation of seven high-priority projects for current and projected patient needs, particularly for children and elderly Virginians, enabling Virginia to meet the legal mandates for patients in secure facilities and insuring that state facilities will continue to receive Medicaid and Medicare reimbursements, reducing demands on the state budget;

WHEREAS, tourism is Virginia's second-largest industry and its park system is a vital component of that industry, helping to contribute \$80 million annually to the state's economy;

WHEREAS, \$95.4 million is allocated to upgrade existing park facilities and purchase new land, enhancing Virginia's tourist potential and increasing the flow of out-of-state revenue to Virginia;

WHEREAS, taxes will not have to be raised to pay for these bonds;

WHEREAS, passage of these three referenda will create 3,600 new jobs and generate \$22 million in new revenue;

WHEREAS, passage of these three referenda will not jeopardize Virginia's AAA bond rating;

NOW THEREFORE BE IT RESOLVED that the Faculty Assembly of the College of William and Mary in Virginia endorses the passage of all three referenda on the Nov. 3, 1992, ballot, authorizing the issuance of general obligation bonds of the Commonwealth of Virginia.

BE IT FURTHER RESOLVED that the Faculty Assembly of the College of William and Mary in Virginia encourages the voters of Virginia to vote "YES" on each Question of whether the referendum should take effect.

Students Planning Community Outreach Week Nov. 2-8

Community Outreach Week, co-ordinated by Help Unlimited, begins Monday with a non-denominational worship service at 7 p.m. in the Wren Chapel, arranged by the Interfaith Council in conjunction with local congregations.

Wednesday Circle K is sponsoring a day-long stocking drive in the Campus Center Lobby. Members will be selling stockings and stocking stuffers for donation to the Salvation Army's drive to aid needy children.

Wednesday evening there will be a workshop on community service, "Volunteering in the Real World," at 7 p.m. in Morton 101.

On Thursday the Change of Pace program at 9 p.m. in the Crim Dell Theatre, sponsored by the Student Association, will focus on volunteers and volunteering.

Saturday will be volunteer outreach day, and volunteers from the campus will work at seven different locations in the community including Headstart and Child Development Resources Center. Some volunteers will visit convalescent centers.

Sunday, the final day of the week-long program, has been designated as Campus Clean-Up. Students, staff and faculty will meet in the Common Glory parking lot at 12:30 p.m. and work during the afternoon. Scott Quarto, student activities coordinator, says he expects the project to be completed by 4 p.m.

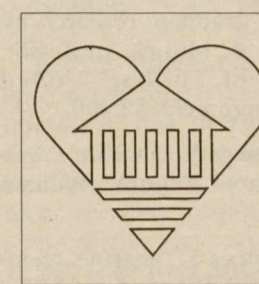
For details on any of the events listed call Quarto at ext. 13273 or David Moldavski of Help Unlimited at 13294.

CVC Campus Drive Far Short Of \$48,000 Goal

The number "48" has great significance for the CVC campus drive. All who contribute at least \$48 will be eligible for a drawing. Prizes will include a parking decal, a gift certificate or meal card from the Marriott food service. A total of four prizes will be awarded. A pizza party will be given to the department with the largest percentage of giving over last year.

As of Oct. 23, the College had received donations and pledges of \$28,000, a little over half of its goal of \$48,000.

"We need employees to help now more than ever," said Bill Merck, William and Mary's 1992 CVC chair. "We



know it's a difficult time to think of giving to others. Everyone is concerned about the economy. But what that really means is that those in our community who need just a little help to make it, need our help today."

"The Combined Virginia Campaign supports such a wide array of programs," said Sam Sadler, chair of the CVC in the greater Williamsburg area. "There are programs that we cannot afford, as a community, to neglect. Although the literature and forms for the drive may seem overly official, the heart of the matter is that the individual donor, no one else, decides who will benefit from each gift. If it is the donor's wish, every penny will stay in the Williamsburg area. However, if the donor wishes to give money to a national or international cause, that too can be done," added Sadler.

"Funds raised in this community for agencies in the community, stay here," said Kerry Mellette, executive director of the United Way of Greater Williamsburg.



Pictured, (l-r) at the presentation ceremony, are Morton Eckhause, chair, physics department; Roy L. Champion; Doug Baker; Jennifer M. Ash; Lynn D. Doverspike; and graduate student Jim Fedchak.

Red Cross Salutes Doug Baker

Doug Baker, a graduate student in physics who recently successfully defended his dissertation, reluctantly took the spotlight last Wednesday morning to receive the thanks and appreciation of the American Red Cross for his service as a bone marrow donor. The recipient, a cancer patient, whose name is kept confidential, is doing well.

Baker signed up as a volunteer last year in a drive held to help history professor Whittenburg who was seeking a bone marrow transplant. No compatible donor was found, and Whittenburg opted for alternative treatment, but information on those who participated in the drive was entered in a national registry maintained by the Red Cross. Baker was a perfect match for another person and volunteered to give bone marrow in this case.

Jennifer M. Ash, donor center coordinator for the National Marrow Donor Program of the Mid-Atlantic Region of the American Red Cross, headquartered in Norfolk, came to make the presenta-

tion of a plaque, a lapel pin designed especially for donors, and a letter of thanks from Admiral E. R. Zumwalt Jr., who heads the program. Ash recruited Baker to assist her by sharing his experiences with others and becoming part of a task force to assist with recruitment of donors.

Ash said that approximately one donor per month was being processed from the Mid-Atlantic region. After the initial blood donation is collected, a battery of tests are performed before the donor actually undergoes the procedure of giving bone marrow, which is done under general anesthesia but does not involve invasive surgery. Baker was back jogging two or three days after his donation and back at work in a week.

One of the needs of the program, said Ash, was funding since each initial testing costs \$55. Donors are sought between the ages of 18 and 55, and those who wish to help but cannot donate blood are asked to contribute as sponsors.

A Timely Gift

The story of Mrs. Samuels (not her real name) illustrates what a difference a timely gift can make in a person's life.

She sat peacefully in the corner of her small, immaculate kitchen, unruffled by the activity around her, greeting workmen as they came and went, thanking them for helping.

A photographer came to ask permission to take her picture. "Why yes, honey," came the reply. Following the sound of the photographer's voice, Mrs. Samuels, 89 and legally blind, turned her head and smiled in the direction of the camera. The photographer steadied herself on the slanting floor and tried to capture in the lens the delight on Mrs. Samuel's face.

It sounded at times as if the house were about to come down. In fact some parts of the house were being removed and replaced by new materials and insulation.

Mrs. Samuels lives in James City County with her 70-year-old niece, who takes care of her. Through the efforts of Housing Partnerships, the two women, for the first time in 15 years, would have running hot water. The new bathroom in the house has been fitted with a tub and shower.

Late in the afternoon the workmen picked up lumber scraps and headed home, another assignment completed. For Mrs. Samuels it was much more—it was a red-letter day she'd always remember.

Thanksgiving Holiday

The College and Virginia Institute of Marine Science will observe the Thanksgiving Holiday on Thursday and Friday Nov. 26-27.

Most of the administrative offices and plant department (except for those employees required to maintain essential services, as determined by management) will be closed. The decision to require employees to work should be made by the dean, director or department head, as appropriate, and should be communicated to the employee(s) as soon as possible. The Campus Police Department will maintain its regular schedule.

The names of permanent classified employees who are required to work must be reported in writing to the Office of Personnel Services by Nov. 11 in order that these employees may be credited with compensatory leave. Hourly employees who are required to work during the holiday will be paid their regular hourly rates.

With the approval of management, compensatory leave should be taken as soon as possible after the holiday on which it was earned. Compensatory time not taken within 12 months will be lost.

On behalf of the administration of the university, I wish each member of the College community a safe and enjoyable holiday.

Melvyn D. Schiavelli
Provost



Marriott Gift

Cindy Martin and Bill Lacey of the Marriott Food Service present a check for \$1,000 to Anne Turner, head of the Hunger Task Force for the Peninsula Food Bank, from the "Miss a Meal" project. Marriott agreed to donate \$1 for every student who signed up to miss a meal in observance of World Hunger Day. More than 900 students participated and Marriott added a donation of their own to round out the check at \$1,000.

Recent Grants Fund A Variety Of Research Projects

American Studies

Gross, Robert A., director, "Educating a Citizenry: School and Society in the World of Thomas Jefferson," National Endowment for the Humanities, \$170,337.

Anthropology

Archaeological Research Center

Blanton, Dennis R., co-director/research, and **Donald W. Linebaugh**, co-director/administration, "Phase I Archaeological Survey of the Lee/Bickford Pit Expansion, James City County," Henry S. Branscombe, Inc., \$15,697.

Blanton, Dennis R., co-director/research, and **Donald W. Linebaugh**, co-director/administration, Phase III Archaeological Analysis and Reporting, Hipkins Site 44RD30, Route 3, Richmond County, Va., Virginia Department of Transportation, \$48,082.

Blanton, Dennis R., co-director/research, and **Donald W. Linebaugh**, co-director/administration, "Phase I Limited Machine Testing of Survey Area #6, Route 17, Gloucester County, Va.," Virginia Department of Transportation, \$3,298.

Blanton, Dennis R., co-director/research, and **Donald W. Linebaugh**, co-director/administration, "Phase I Cultural Resource survey, Route 685, Amherst County, Va.," Virginia Department of Transportation, \$5,433.

Biology

Watts, Bryan A., research professor, "Land Planning for Bald Eagle Management in Chesapeake Bay," Virginia Department of Game and Inland Fisheries, \$51,402.

Watts, Bryan A., research professor, "Northampton County Special Area Plan: Migratory Bird Habitat Utilization Study," Virginia Department of Game and Inland Fisheries, \$16,862.

Computer Science

Sivertson, W. E., Jr., senior research associate, "James City County Environmental Poster Project," James City County, \$14,624.

Geology

Macdonald, R. Heather, associate professor, "Sharing Geology Activities: College Students in Elementary Schools," The Geological Society of America, \$250.

Physics

Benner, D. Chris, research associate professor, "HALOE—Science Investigation," National Aeronautics and Space Administration, \$104,483.

Carli, Bruno, research scientist, "Analysis Method for Fourier Transform Spectroscopy," National Aeronautics and Space Administration, \$2,000.

Kossler, William J., professor, "Construction of a Modified Superconducting Hydrogen MASER with Improved Mechanical and Thermal Properties," Center for Innovative Technology, \$13,000.

Arts and Sciences

Lutzer, David J., dean of Arts and Sciences, "An Alternative General System Based on Advising and Assessment (FIPSE)," U.S. Department of Education, \$97,602.

School of Education

VanTassel-Baska, Joyce, director, and **Shelagh A. Gallagher**, associate director, "A National Dissemination," U.S. Department of Education, \$232,816.

Virginia Institute of Marine Science/School of Marine Science

Austin, Herbert M., professor; **James**

E. Kirkley, associate professor; and **Jon A. Lucy**, marine scientist, "Industry Support for Menhaden By-Catch Evaluation," Zapata-Haynie and AMPRO, \$8,000.

Barber, Bruce J., assistant professor, and **Walter Priest**, marine scientist, "Swash Bay Biological Survey," United States Army Corps of Engineers, \$5,000.

Bentley, Ellen, graduate research assistant, "Habitat Analysis of the Yellow-crowned Night-Heron," Williamsburg Bird Club, \$500.

Berquist, C. Richard, professor/lecturer, "Preparation of State Geologic Map Project," Virginia Department of Mines, Minerals, and Energy, \$10,000.

Boon, John, professor; **Scott Hardaway**, marine scientist; and **C. Richard Berquist**, professor/lecturer, "Technical Assistance and Consulting," Virginia Department of Conservation and Recreation, \$9,833.

Boon, John, professor; **Scott Hardaway**, marine scientist; and **C. Richard Berquist**, professor/lecturer, "Public Beach Monitoring and Analysis," Virginia Department of Conservation and Recreation, \$46,616.

Boon, John, professor; **Scott Hardaway**, marine scientist; and **C. Richard Berquist**, professor/lecturer, "Wave Monitoring and Analysis," Virginia Department of Conservation and Recreation, \$34,035.

Boon, John, professor; **Scott Hardaway**, marine scientist; and **C. Richard Berquist**, professor/lecturer, "Evaluation of Hampton Sand Mining Site," Virginia Department of Conservation and Recreation, \$15,975.

Colvocoresses, James A., assistant professor, and **Patrick J. Geer**, marine scientist, "Estimation of Relative Juvenile Abundance of Recreationally Important Finfish in the Virginia Portion of Chesapeake Bay," United States Fish and Wildlife Service, \$218,124.

Diaz, Robert J., associate professor, "Newport News Shipyard and Drydock Company/Radiological Sampling, summer/1992," Newport News Shipbuilding, \$9,000.

Diaz, Robert J., associate professor, "Seafloor Survey in the Vicinity of the Manteo Prospect Offshore North Carolina," Minerals Management Service, \$999,245.

Dickhut, Rebecca, assistant professor, "Atmospheric Deposition of Selected Organic Contaminants in the Southern Chesapeake Bay Region," Environmental Protection Agency, \$52,550.

DuPaul, William D., professor, and **Robert A. Fisher**, marine scientist, "Evaluation of Processed Atlantic Sea Scallops: Consumer Evaluations," International Food Additive Council and American Scallop Association, \$65,596.

Hershner, Carl, associate professor, "Enhancement of Technical Support for Tidal Wetlands Management II: Automated Project Analysis," Environmental Protection Agency, \$58,269.

Hershner, Carl, associate professor, "Assessment of Wetlands Hydrologic Functions in the Chickahominy River," U.S. Fish and Wildlife Service, \$13,000.

Hershner, Carl, associate professor, "Wetlands Functional Assessment," Environmental Protection Agency, \$35,806.

Huggett, Robert J., professor, and **Morris H. Roberts**, associate professor, "Mediating Sediment Toxicity with Sorbant Resins," The Rohm and Haas Company, \$19,890.

Kator, H., associate professor, and **Martha Rhodes**, marine scientist, "Evaluation of Selected Bacteriophages as Indicators of Septic Contamination of Groundwater and Groundwater Discharge to Shallow Aquatic Environment,"

Virginia Water Resources Research Center, \$29,319.

Keinath, John, graduate research assistant, and **John A. Musick**, professor, "Study Design for Sea Turtle Biotelemetry Studies," United States Army Corps of Engineers, \$2,400.

Keinath, John, graduate research assistant, "Development of Telemetry Studies of Sea Turtle Abundance," United States Army Corps of Engineers, \$9,984.

Keinath, John, graduate research assistant, and **John A. Musick**, professor, "Transportation of Turtles," United States Corps of Engineers, \$2,400.

Lawrence, Frances L., marine scientist, "1992 Governor's School," William and Mary, \$4,485.

Lawrence, Frances L., marine scientist, "Environmental Action Agenda for the Classroom," Virginia Environmental Endowment, \$17,329.

Lipcius, Romuald, associate professor, "A Field Study of the Population Dynamics of the Blue Crab *Callinectes Sapidus* in Chesapeake Bay," National Oceanic and Atmospheric Administration/National Marine Fisheries Service, \$150,000.

Loesch, Joseph G., professor, "Study of Alosa Stock Composition in Virginia's Commercial Inshore Fisheries," National Oceanic and Atmospheric Administration/National Marine Fisheries Service, \$51,700.

Loesch, Joseph G., professor, "Development of an Alosa Juvenile Index of Abundance," National Oceanic and Atmospheric Administration/National Marine Fisheries Service, \$125,000.

Lynch, Marice P., professor, "Estuarine Living Marine Resources," National Oceanic and Atmospheric Administration, \$3,203.

Lynch, Maurice P., professor, **Bland Crowder**, marine scientist, "Interpretation and Education Award for the Chesapeake Bay National Estuarine Research Reserve in Virginia," National Oceanic and Atmospheric Administration, \$20,000.

Lynch, Maurice P., professor, "1992-1993 Operations Award/Chesapeake Bay National Estuarine Research Reserve System in Virginia," National Oceanic and Atmospheric Administration, \$70,000.

Lynch, Maurice P., professor, and **Robert Breeding**, marine scientist, "Monitoring Water Quality, Bird Life, and Juvenile Finfish at sites within the Chesapeake Bay National Estuarine Research Reserve System in Virginia," National Oceanic and Atmospheric Administration, \$20,000.

Musick, John A., professor; **Steve Branstetter**, professor/lecturer; and **John Graves**, assistant professor, "Distribution, Abundance, and Stock Composition of Sharks Important to Recreational Fisheries in Virginia," United States Fish and Wildlife Service, \$184,300.

Musick, John A., professor, and **John Keinath**, graduate research assistant, "Loggerhead Sea Turtle Head Start Evaluation," United States Fish and Wildlife Service, \$20,000.

Musick, John A., professor, and **Martin J. Lenhardt**, adjunct faculty, "Assessment of Hearing in Marine Turtles and Development of Alert Device for Field Trials," United States Army Corps of Engineers, \$131,076.

Musick, John A., professor, and **John Olney**, assistant professor, "Relocation Curation and Improvement of the Virginia Institute of Marine Science Fish Collection," National Science Foundation, \$149,955.

Neilson, Bruce J., professor, "Collecting Dissolved Oxygen Data from Near Bottom Waters in Chesapeake Bay," En-

vironmental Protection Agency, \$9,699.

Neilson, Bruce J., professor, "Monitoring Stratification and Dissolved Oxygen Concentrations in Near Coastal Waters off the Virginia Eastern Shore," Sea Watch, \$7,500.

Neilson, Bruce J., professor, and **Sarah Rennie**, graduate research assistant, "To Publish on CD-ROM a digital Atlas of Water Quality Conditions in the Chesapeake Bay," Virginia Environmental Endowment, \$24,878.

Orth, Robert, associate professor, "Submerged Aquatic Vegetation Distribution and Abundance Survey," Environmental Protection Agency, \$122,000.

Orth, Robert, associate professor; **Richard Wetzel**, professor; and **Ken Moore**, marine scientist, "Role of Light Attenuation Processes," Virginia Graduate Marine Science Consortium/National Oceanic and Atmospheric Administration, \$60,000.

Perry, James, professor/lecturer, "Education Supplement for 1992 Earthwatch Project" Concord Academy/Earthwatch, \$1,000.

Perry, James, professor/lecturer, "Marsh Fertilization Benefit Analysis," Virginia Department of Conservation and Recreation, \$4,600.

Perry, James, professor/lecturer, "Wetlands Delineation Classes/1993," State Water Control Board, \$1,995.

Perry, James, professor/lecturer, "Distribution of *Aeschynomene virginica* and *Bacopa innominata* along the Proposed Alternative Routes for the SR629 Mattaponi River Crossing Upgrade Project," Virginia Department of Transportation/Environmental Division, \$4,423.

Pile, Adele J., graduate research assistant, "Predation Studies/Blue Crabs," Lerner Gray Fund for Marine Science, \$950.

Roberts, Morris H., associate professor, "Hydrozoan (*Garveia*) Study Review," Betz Industrial, \$5,027.

Theberge, Norman B., professor, "The Development of a State Wetlands Conservation Program for Virginia's Ungranted Marshes, Meadowlands, Beaches, and Commons in the Counties of Accomack and Northampton," Environmental Protection Agency, \$103,534.

Thompson, Michelle, graduate research assistant, "Lerner-Gray FY," Lerner Gray Fund for Marine Science, \$450.

Unger, Michael, professor/lecturer, and **William G. MacIntyre**, professor, "Chemical Characterization of a Dredge Spoils Pond at the BASF Williamsburg Plant Site," BASF Corporation, \$47,900.

Vogelbein, Wolfgang K., research scientist; **Craig Smith**, associate professor; **Michael Unger**, professor/lecturer; and **David Zwerner**, marine scientist, "Development of the Mummichog, *Fundulus heteroclitus* as an Indicator of Chemical Carcinogens in Urbanized Coastal Environments," Environmental Protection Agency, \$44,216.

Wetzel, Richard, professor, "Ecological Processes and Living Resources: Ecosystem Models of the Patuxent River Estuary Relating Nutrient Loadings to Production of Selected Fish Populations," Environmental Protection Agency, \$101,000.

Wetzel, Richard, professor, "Sediment-Water Nutrient Exchange in Estuarine Sediments of Differing Tropic Status," National Oceanic and Atmospheric Administration/National Estuarine Research Reserve, \$44,666.

Ash Lawn-Highland

Holmes, Carolyn C., executive director, "Museum Assessment Program III," Institute of Museum Services, \$4,400.

Project Mandala

CONTINUED FROM PAGE 3.

certificates will be presented to students, teachers and staff.

School divisions that have been active participants in Project Mandala since the spring of 1990 include Virginia Beach, Hampton, Norfolk, Portsmouth, Newport News, Petersburg, Williamsburg and the following counties, James City, Charles City, Surry, King & Queen, King William, York, Northumberland, and Henrico.

Project Mandala has provided these divisions with an exemplary model to enable them to adapt their school programs to better meet the needs of gifted learners from at-risk environments.

"Our colleagues in the field of education firmly believe that to provide these learners who are at-risk, yet have potential for superior performance given appropriate nurturance in our schools, is a worthy endeavor," asserted Baytops in a letter to local editors. "Additionally through our work with families, we have provided them with a sense of empowerment so that they can access available resources to better nurture the needs of these learners in the home and community. Participating school divisions have also established local planning teams so that they can incorporate the initiatives of Project Mandala into their school division's plans for serving gifted learners."

Physics Colloquia

The following colloquia are scheduled:

Friday, Oct. 30—Robert Shrock, State University of New York, Stony Brook, "Limits on Neutrino Masses and Mixing."

Friday, Nov. 6—Michael Ogilvie, Washington University, St. Louis, "Hot Quarks."

Friday, Nov. 13—Leonard Kisslinger, Carnegie-Mellon University, "Hadronic Form Factors: From Soft to Hard QCD."

Sessions are held at 4 p.m. in Small Hall 109. Coffee is served in Small Hall 123 at 3:30 p.m.

Sundae Drive Ends Saturday

We've about worn out the picture of the ice-cream sundae this month, reminding people that October is the month that Ben & Jerry's holds its annual promotion for Swem Library.

There are just four days left to participate.

For every sundae that is sold this month, Ben & Jerry's donates 50 cents to the library.

Last year \$750 was contributed through the project. In 1990, \$680 was donated.

The Library staff went out as a group at the beginning of the month to get the drive going and hopes that this year's drive will surpass last year's.

Ben & Jerry's is located at 3044 Richmond Road in Patriot Plaza.

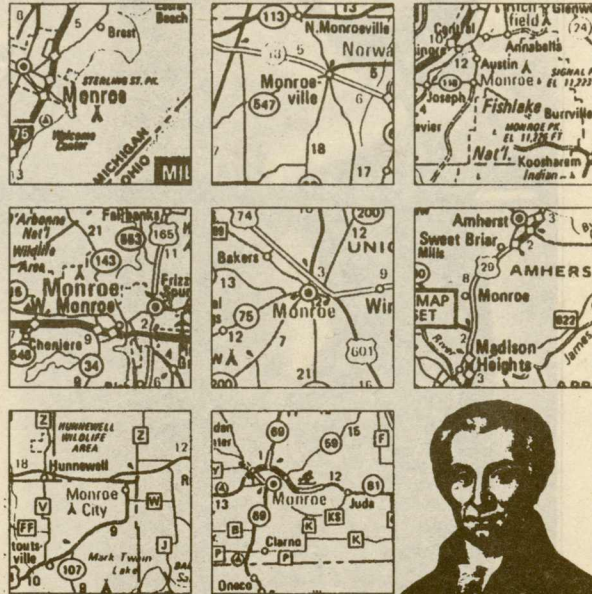
Ash Lawn-Highland Publishes Book On Place Names

Monroe U.S.A., a collection of place names honoring the fifth president, by Larisa E. Wicklander, is an interesting compilation of facts about places throughout the country named for President James Monroe.

The author, an alumna of the College and law student at the University of Virginia, used state and local chambers of commerce, museums and historical societies throughout the country for her entries.

In the introduction, Wicklander explains that she sent out questionnaires to get information. "Undeniably, however, questionnaires do not always elicit the most accurate responses. Thus, some of the material in *Monroe, U.S.A.* is hearsay, some is dated, some of the entries are incomplete, and some may (unbeknownst to me) contain errors." Readers are invited and urged to share information on other places named Monroe that are not listed in the book. For trivia fans, this book is a must. Where else could

MONROE USA



A collection of placenames honoring our fifth president.

you find that Monroe County, Iowa, was originally called Kishkekosh or "man with one leg"? Or that Monroeville, Ind., claims author Lloyd C. Douglas and has a "one-man, one-dog, police department"? Or that Monroe, Ind., is the hometown of General George Armstrong Custer?

There are also some entries that James Monroe cannot claim. Monroeville, N.J., was named for Samuel Y. Monroe, presiding elder of the Bridgeton District of the Methodist Episcopal Conference (1856-1859). Monroeville, Pa., was named in 1851 to honor the first postmaster, Joel Monroe.

This is the latest publication by Ash-Lawn Highland, and has been published in cooperation with the James Monroe Museum and Memorial Library for the Monroe Collection.

Ash Lawn-Highland is owned and operated by the College. The James Monroe Museum is administered by Mary Washington College.

CLASSIFIED ADVERTISEMENTS

Classified ads are included as a service to members of the College community and will be accepted from faculty, staff, students and alumni only. Ads should be no longer than 40 words and must be submitted in writing to the William and Mary News office no later than 5 p.m. on the Friday preceding the first insertion.

FOR SALE

Automobiles

1989 Dodge Caravan SE. Fully equipped, excellent condition. \$7,800. Call 229-4046, evenings and weekends. (10/28)

1983 Toyota Camry hatchback, 5-speed, 5-door, AC, PS, PB, 130K, very good condition, garage-kept, \$2,100. Call 229-1154. (11/4)

Moving, must sell. 1966 Jeep, CJ-5, excellent condition, just over 50K on original engine, used on a farm and garaged, current inspection, two tops (hard and soft) and bikini top. \$3,000. Call Joe Jones, ext. 12581 or 220-8822 and leave message (11/11)

1984 Honda Accord LX, AT, PS, BP, AC, CC, PW, PD, etc. White with blue interior. 122,000 miles. \$3,000 or best offer. Call Kim at ext. 11003 or 566-0970. (11/11)

Miscellaneous Articles

Airline ticket from Newport News-Wmsbg. Airport to Raleigh-Durham, Nov. 24, leaving at 1:21 p.m. Just \$35. Call 229-6345. (11/4)

Word Perfect, V. 5.1 (with 3-1/2" diskettes), never used, \$80. Genuine leather jacket, never used, \$150. AT&T cordless 5451 telephone with intercom, never used, \$100. Call Verma at 766-2302 or 864-8641. (11/4)

Eight-foot Sears pool table with balls, sticks, rack and other accessories. Three years old and in excellent condition. \$350. Call Betty Jo at ext. 13433 (days) or 566-1075 (evenings). (11/4)

Two recliners, \$50 each; one love seat with matching chair, \$80; all in excellent condition. Grey leather coat, size 14, 3/4 length with fur collar, \$80. Call 229-1416. (11/11)

Solid oak executive desk, five feet long, completely refinished; like new condition, approximately 40-years-old; dark oak chair included; \$350. Solid mahogany executive desk chair with swivel base; completely refinished; approximately 40 years old; excellent condition; \$150. Ladies' writing desk, solid light mahogany, very good condition; non-matching chair included; \$80. Large dark green velour overstuffed chair, made by Kroehler, never used; \$80. Solid pine sofa frame, handmade, no cushions included, excellent condition; \$40. All prices are negotiable. Call 221-0235 after 5 p.m. and ask for Debbi. (11/11)

Homes and Property

Selling for \$13,000 below assessed value! 3-BR, 2-1/2-bath cluster home with sunroom and master bedroom on first floor, 1,700 sq. ft. \$99,500. Good neighborhood with pool, trails and woods. Spacious with lots of light. Call 253-0126. (10/28)

House trailer on large treed lot, located in Manteo, N.C. Great getaway for beach or fishing. (1/2 mile from Fort Raleigh and 8 miles from Nags Head). 3 BRs, 2 baths, kitchen, living room and large storage shed. \$22,000. Call Betty Jo at 566-1075. (11/11)

FOR RENT

Vacation cottage, Nags Head MP6, west side of bypass. 2 BRs, sleeps 4. Central heat and AC, W/D, microwave, 2 cable TV's, VCR and phone. \$40 per night. Families only. No pets. Call Betty Jo at ext. 13433 (days) or 566-1075 (evenings). (11/4)

Furnished 3-BR faculty house for rent second semester. Five minutes from campus. Rent negotiable. Call 220-4763. (11/11)

SERVICES

Piano lessons, beginning with intermediate, taught in your home. References provided. Call ext. 12987. (11/4)

Yoga classes for all levels. Monday and Thursday evenings. \$24 for six classes. Call Rosie Taylor, 229-0918. (11/11)

EMPLOYMENT

The following positions at the College are open to all qualified individuals, unless otherwise noted. Visit the Office of Personnel Services, Thiemes House, 303 Richmond Road, for information, a listing of vacancies and application forms, Monday-Friday, 8 a.m. to 4 p.m. Call ext. 13150. All applicants must submit a completed Commonwealth of Virginia Application form to the Office of Personnel Services.

Deadline for applying for the following positions is 5 p.m., Friday, Oct. 30, unless otherwise noted. Postmarks will not be honored.

Housekeeping Worker (unclassified)—\$4.97 per hour, part time, approximately 30 hours per week. Shift begins 5 a.m. #H331. Location: Facilities Management.

Trades Helper (unclassified)—\$5.43 per hour. Work on an on-call basis. #H281. Location: Parking Services.

Security Lead Guard (unclassified)—\$5.94 per hour, part time, approximately 30 hours per week. Shift work, including nights, evenings, weekends and holidays, required. #H541. Location: Campus Police.

Laboratory Technician (unclassified)—\$6.49 per hour, on an as-needed basis with occasional weekend and evening work required. *Restricted appointment with funding subject to renewal Oct. 1, 1993.* #H259. Location: VIMS (Resource Management and Policy).

Secretary (unclassified)—\$6.49 per hour, part time, approximately 20 hours per week. #H021. Location: Mathematics.

Office Services Assistant (unclassified)—\$6.49 per hour, part time, approximately 20-25 hours per week (preferably mornings). #H619. Location: Modern Languages.

Laboratory Technician (unclassified)—\$6.49 per hour, part time, approximately 16 hours per week. #257. Location: VIMS (Environmental Sciences).

Secretary Senior (unclassified)—\$7.10 per hour, part time, approximately 30 hours per week. #H276. Location: School of Education.

Office Services Specialist (Grade 5)—Entry salary \$14,760. #574. Location: Campus Center. *Deadline Nov. 6.*

Enrollment and Student Services Specialist (Grade 8)—Entry salary \$19,283. #660. Location: Office of the Registrar. *Deadline Nov. 6.*

Student Services Specialist (Grade 8)—Entry salary \$19,283. #N092. Location: School of Business. *Deadline Nov. 6.*

Registered Nurse (Grade 10)—Entry salary \$960.17 semi-monthly, works mid-August to mid-May, rotating evening and night shift schedule, including weekends and holidays. #030. Location: Student Health Center. *Deadline Nov. 6.*

Public Relations Specialist (Grade 10)—Entry salary \$23,044. #N093. Location: School of Business. *Deadline Nov. 6.*

Safety Engineer (Grade 12)—Entry salary \$27,538. #198. Location: VIMS (Safety Office). *Deadline Nov. 6.*

Society of the Alumni

Programmer Entry-level management position. Knowledge of database management and VMS, familiarity with PCs, troubleshooting hardware and software problems desirable. Supervisory experience preferred. Successful applicant must possess a degree in computer or information science or a bachelor's degree in a different discipline with equivalent experience.

Applicant will program in DATAYTRIEVE, a 4GL language, coordinate user and operating requirements, resolve technical problems, support PC users, develop documentation and supervise records maintenance staff.

Full benefits package. Send resume, cover letter, three references and salary history to: Jessica Frank, director of alumni records and information systems, Society of the Alumni, College of William and Mary, P.O. Box 2100, Williamsburg, VA 23187-2100.

Review of applications will begin immediately and continue until the position is filled. This is a re-advertisement of this position; applicants who have responded previously need not reapply.

This is not a State of Virginia position.

CALENDAR

Campus

Wednesday, Oct. 28

Prayers at Noon worship service, sponsored by Campus Ministers United (CaMU), Wren Chapel, noon. For information, call 229-6832.

Lecture: "Influence of Age and Gender in Response to Exercise in Polluted Environments," Steven M. Horvath, director of the Environmental Stress Institute, Univ. of California, Santa Barbara, Rogers 100, 7 p.m.

Women's Soccer vs. James Madison University, Busch Field, 7 p.m.

Thursday, Oct. 29

Ferguson Publishing Seminar, Campus Center.

Town & Gown Luncheon: "Puttin' on the Dog—Selections from the Chapin and Horowitz Canine Book Collections," Susan Riggs, special collections, Swem Library, CC ballroom, 12:15 p.m.

Cissy Patterson Lecture in Undergraduate Mathematics: "You Can't Top This: Using Mathematics to Find What's Best," Dr. Margaret Wright, Bell Laboratories, Small Hall 113, 2 p.m.

Lecture: "An Inside Look at Book Publishing," Paul D. McCarthy, senior editor, Pocket Books, N.Y.C., Botetourt Theatre, Swem Library, 4 p.m. Sponsored by Friends of the Library. Reception, Botetourt Gallery, 3:15 p.m.

Commonwealth Center Seminar Series: "White Like Me: Racial Cross-Dressing and the Construction of American Whiteness," Eric Lott, English department, Univ. of Virginia, Botetourt Theatre, Swem Library, 5 p.m.

Friday, Oct. 30

Psychology Colloquium: "The Right to Die for Children and Adults: Guidelines to Decision Making," Tom Hafemeister, staff attorney, Institute on Mental Disability and the Law, National Center for State Courts, Millington 211, 4 p.m. Refreshments, Millington 232, 3:30 p.m.

Men's Soccer vs. Loyola College, Busch Field, 7:30 p.m.

Orchesis: "lives, lessons, Laughs: An Evening of Dance," a dance documentary in observance of National Breast Cancer Awareness Month, PBK, 8:15 p.m. Orchesis is joined by Eric Hampton Dance, a contemporary movement dance troupe from Washington, D.C., and composer Bryan McCune. No admission charge.

Saturday, Oct. 31

Men's and Women's Cross Country CAA Championships, 11 a.m.

Orchesis: "lives, lessons, Laughs: An Evening of Dance," PBK, 8:15 p.m. (See Oct. 30 listing for program notes.)

Sunday, Nov. 1

Muscarella Museum Film: "Art in America: Sculpture" (28 minutes), 4 p.m.

Concert Series: Philharmonia Quartet Berlin, PBK, 8 p.m. Tickets, \$15.

Monday, Nov. 2

Muscarella Museum Film: "Art in America: Sculpture" (28 minutes), 4 p.m.

Charles Center Movie Series: "City of Hope," Charles Center (Tucker basement), 7 p.m. Free.

Tuesday, Nov. 3

College Bowl, Campus Center (through Nov. 17). For information and schedule, call ext. 13437.

Wednesday, Nov. 4

Prayers at Noon worship service, sponsored by Campus Ministers United (CaMU), Wren Chapel, noon. For information, call 229-6832.

Women's Studies Brown Bag Lunch Lecture Series: "Self-Esteem in Families and Schools: An Examination of Gender and Race Issues," Gail McEachron-Hirsch, assistant professor of education; CC, Room E, noon to 1:15 p.m.

Concert: William and Mary Orchestra, Edgar W. Williams Jr., director, PBK, 8 p.m. Tickets, \$2 at door; W&M students with ID admitted free.

Thursday, November 5

Town & Gown Luncheon: "Tercentenary Perspectives," President Timothy J. Sullivan, CC ballroom, 12:15 p.m.

Ewell Concert Series: Nelly Bruce, pianist, Ewell Recital Hall, 8 p.m. General admis-



Dance Program

Guest artists from Washington, D.C.; and members of Orchesis, the resident modern dance company at the College; and Lisa Yount, a member of the dance faculty, will present a program Friday and Saturday night, Oct. 30 and 31, at 8:15 p.m., in Phi Beta Memorial Hall. There is no admission charge. Yount, pictured above, will present a dance documentary to heighten public awareness of October as National Breast Cancer Awareness Month.

sion at the door, \$2. W&M students with ID admitted free.

Friday, November 6

Psychology Colloquium: "The Activity-Stress Paradigm: Possible Mechanisms and Applications," Kelly G. Lambert, Randolph-Macon College, Millington 211, 4 p.m. Refreshments served in Millington 232, 3:30 p.m.

Concert: W&M Jazz Ensemble, Laura Rexroth, conductor, PBK, 8 p.m. Admission is \$2 at the door.

Saturday, Nov. 7

Men's and Women's Swimming vs. East Carolina University, 2 p.m.

Sunday, Nov. 8

Volleyball vs. Florida State University, Adair Gym, noon.

Men's and Women's Swimming vs. University of North Carolina (Wilmington), 1 p.m.

Muscarella Museum Gallery Talk: "Alexander Galt: The Man Revealed," Ann C. Madonia, curator, Muscarella Museum, 3 p.m.

Muscarella Museum Film: "Masters of Modern Sculpture: Pioneers" (58 minutes), 4 p.m.

Monday, Nov. 9

Muscarella Museum Film: "Masters of Modern Sculpture: Pioneers" (58 minutes), 4 p.m.

Charles Center Monday Movie Series: "Day for Night," Charles Center (Tucker basement), 7 p.m.

Wednesday, Nov. 11

Prayers at Noon worship service, sponsored by Campus Ministers United (CaMU), Wren Chapel, noon. For information, call 229-6832.

Graduate and Professional School Day, sponsored by the Office of Career Services, William and Mary Hall (concourse level), 1 to 4 p.m. Call ext. 13240 for more information.

Dedication of Jefferson Statue, 4 p.m.

Thursday-Friday, Nov. 12-13

Board of Visitors Meeting

Thursday, Nov. 12

Town & Gown Luncheon: "Czechoslovakia,

Change, Education," Thomas L. Heacox, associate professor of English, CC ballroom, 12:15 p.m.

Women's Studies Brown Bag Lunch Lecture Series: "The Role of Women in Socialist Societies," Anne Henderson, assistant professor of government; CC, Room E, 12:30 to 1:45 p.m.

Commonwealth Center Seminar Series: "Rethinking Afro-American Slavery in the United States," Ira Berlin, Department of History, University of Maryland, College Park, Botetourt Theatre, Swem Library, 5 p.m.

Friday, Nov. 13

Psychology Colloquium: "The MANOVA Approach to Repeated Measures Analysis of Variance: Basic Concepts and SPSS Applications," Lee Kirkpatrick, assistant professor of psychology, Millington 211, 4 p.m. Refreshments, Millington 232, 3:30 p.m.

Saturday, Nov. 14

Football vs. Lehigh, Zable Stadium, 1 p.m.

Sunday, Nov. 15

Muscarella Museum Film: "Masters of Modern Sculpture: Beyond Cubism" (58 minutes), 4 p.m.

Monday, Nov. 16

Muscarella Museum Film: "Masters of Modern Sculpture: Beyond Cubism" (58 minutes), 4 p.m.

Charles Center Monday Movie Series: "Roger & Me," Charles Center (Tucker basement), 7:00 p.m.

Tuesday, Nov. 17

Muscarella Museum Gallery Talk and Demonstration: "Studio Practices of Alexander Galt," Lewis Cohen, assistant professor of Fine Arts, 4 p.m.

Wednesday, Nov. 18

Prayers at Noon worship service, sponsored by Campus Ministers United (CaMU), Wren Chapel, noon. For information, call 229-6832.

Thursday, November 19

Town & Gown Luncheon: Musical program by the Jazz Ensemble conducted by Laura Rexroth, director of bands, CC ballroom, 12:15 p.m.

Women's Studies Program: "The Legacy of Brecht in British Feminist Theatre," with Janelle Reinelt, Dodge Room, PBK, 4 p.m.

Exhibits

Muscarella Museum

Through Nov. 29

"Spirit of the South: The Sculpture of Alexander Galt"

"Alexander Galt: The Man Revealed"

"A 19th-Century Album: American Portraits from the Museum Collection"

Zollinger Museum, Swem Library

Through Nov. 30

"Puttin' on the Dog"

Community

This column is devoted to events in Williamsburg and surrounding areas that would be of interest to members of the College community. We will accept entries, on a space available basis, of concerts, lectures, exhibits and other events open to the general public.

Wren Chapel Recital: organ recital of 18th-century music, Wren Chapel, College of W&M, every Saturday, 11 a.m.

Bruton Parish Church by Candlelight every Tuesday, Thursday and Saturday, 8 p.m.

Colonial Williamsburg

DeWitt Wallace Decorative Arts Gallery

Hours: 10 a.m. to 6 p.m., daily. Call 220-7724.

Exhibit: "Indivisible Under God: Church and State in 18th-Century Virginia," exploring the unity of religion and government in Colonial Virginia and following the career of the Rev. James Blair, founder and president of the William and Mary. For information, call 220-7724. Through April 30.

Jamestown Settlement

Hours: 9 a.m. to 5 p.m., daily. Call 229-1607.

Exhibit: "Discovering America" (through March 15). Admission: \$7, adults; \$3.50, children (6 through 12). For more information, call 253-4838.

On the Hill/Yorktown Arts Foundation

Hours: Monday through Saturday, 10 a.m. to 5 p.m.; Sunday, 1 to 5 p.m. Call 898-3076.

20th Century Gallery

Hours: 11 a.m. to 5 p.m., Tuesday through Saturday; noon to 5 p.m., Sunday.

Exhibit: "The Puppetry Series," an exhibition of paintings by Ralph Gilbert, assistant professor of art, Georgia State University, Atlanta (through Nov. 11).

Williamsburg Regional Library

Book Sale: Saturday, Oct. 24, 10 a.m.-5 p.m.; Sunday, Oct. 25, 1-5 p.m.

Yorktown Victory Center

Hours: 9 a.m. to 5 p.m., daily. Call 887-1776.

Exhibits and films: Yorktown's role in the American Revolution; "The Road to Yorktown" (film); and the "Witnesses to Revolution" gallery. Exhibit: "The American and British Foot Soldier, 1775-1785."

Saturday, Nov. 7

Montpelier Hunt Races. For tickets and information, write or call The Montpelier Steeplechase and Equestrian Foundation, Lock Box 67, Montpelier Station, VA 22957, 703-672-2728.

WILLIAM & MARY

NEWS

The William & Mary News is issued weekly during the school year for faculty, staff and students of the College and distributed on campus Wednesday afternoons.

News items and advertisements should be delivered to the News Office, James Blair 310A (221-2639), no later than 5 p.m. the Friday before publication. Notices for the calendar should be delivered to the News Office no later than 5 p.m. the Wednesday before publication.

Barbara Ball, editor
Marilyn Carlin, desktop publishing
Publications Office, production
News deadline: Fridays, 5 p.m.