



Figure 5. Feature 1A, looking west.



Figure 6. Closeup of east end of Feature 1A, with opening of Feature 1B unexcavated, looking east.



Figure 7. Feature 1A, looking west.



Figure 8. Three openings in south wall of Feature 1A, looking south.

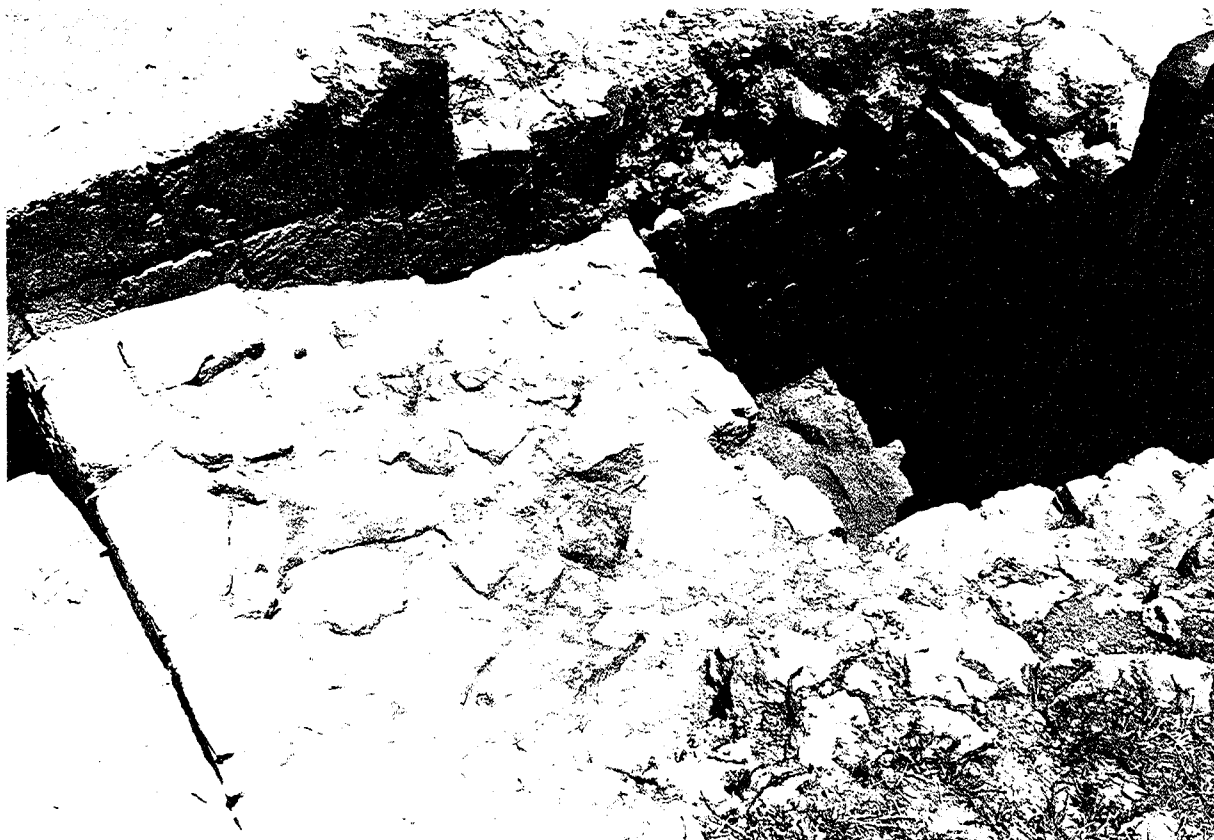


Figure 9. Feature 1A, closeup of west end, looking southwest.

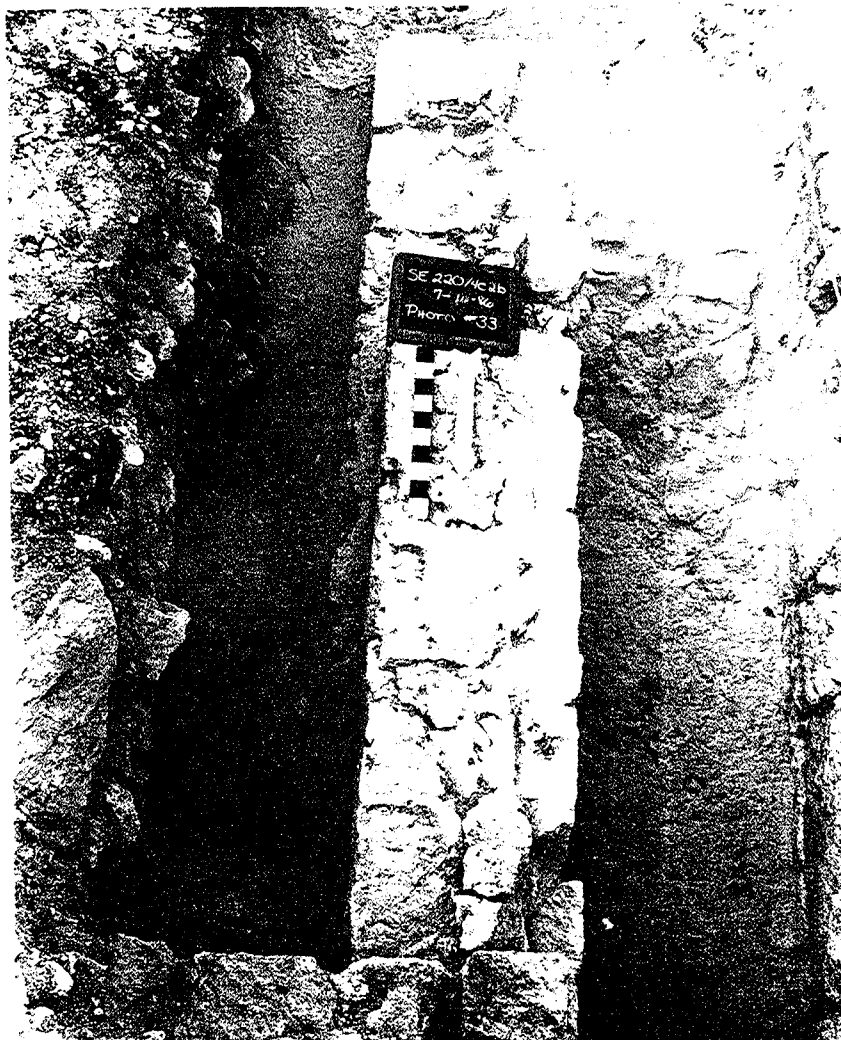


Figure 10.  
Plan of east  
portion of  
Feature 1B,  
looking south.

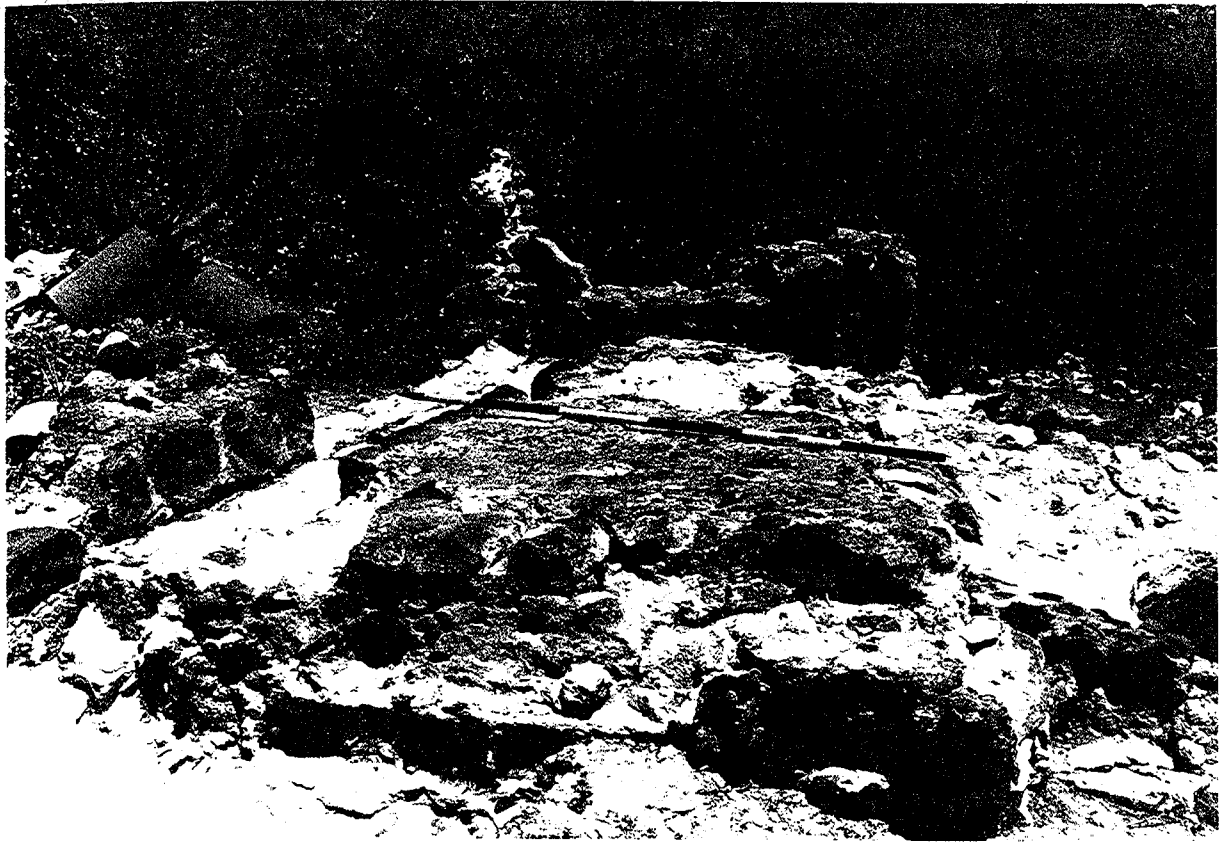


Figure 11. Platform area, Feature 1C, looking south.

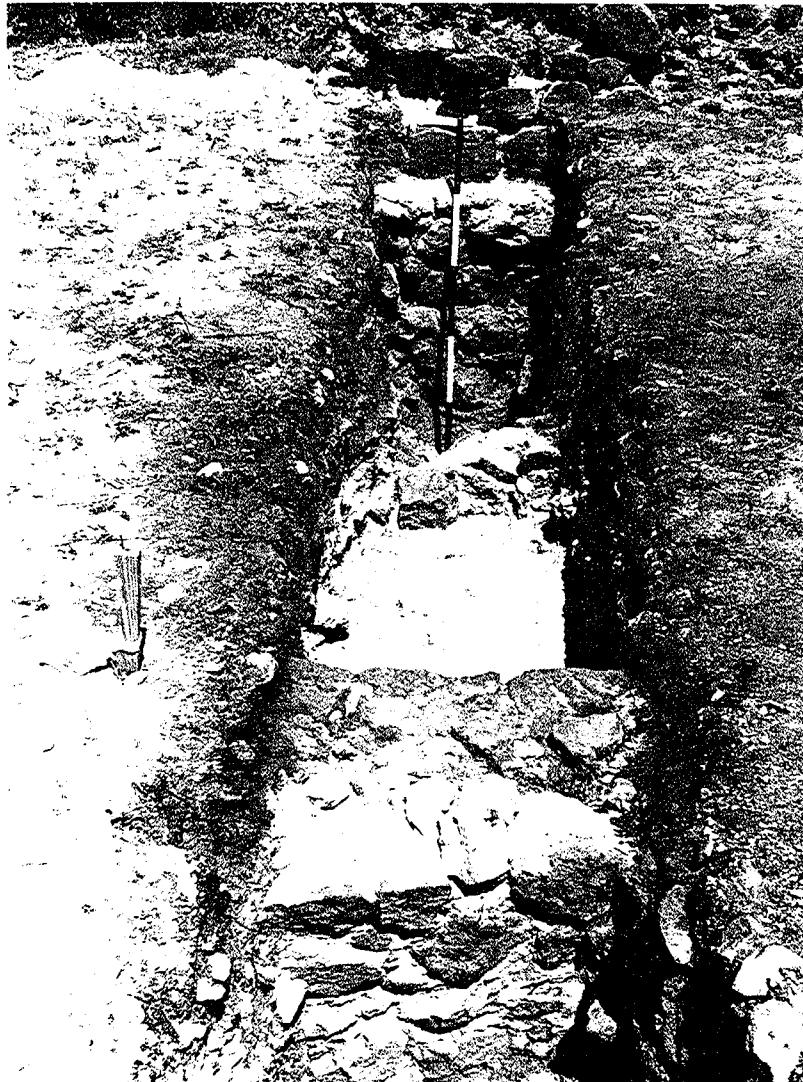


Figure 12.  
Feature 2 stone  
walls with west  
foundation wall  
in background,  
looking west.

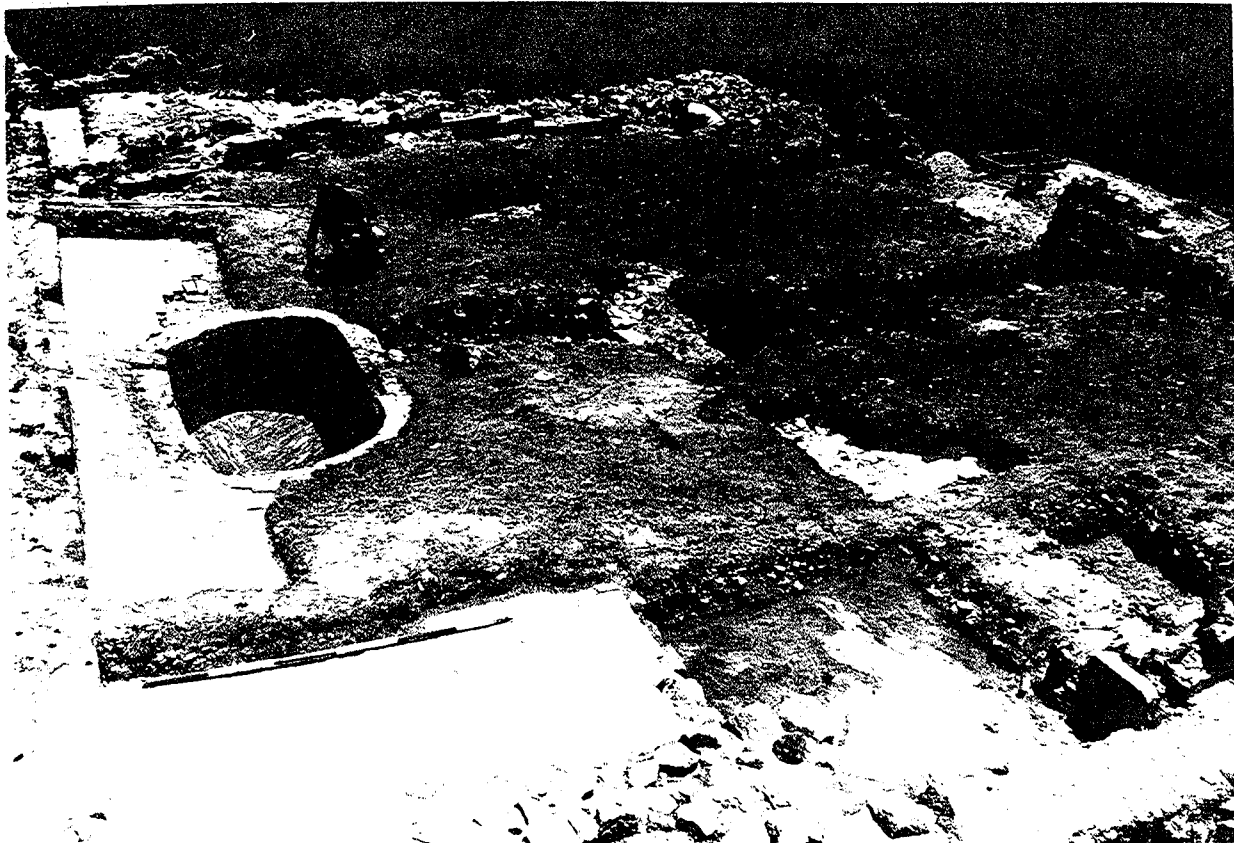


Figure 13. Room 1, looking south. Note Feature 4 brick oval, sloping brickwork, plastered brick floor and Feature 3 to right of brick oval.



Figure 14.  
Feature 4 with  
sloping brickwork,  
looking south.



Figure 15. Feature 4 with sloping brickwork, looking north.

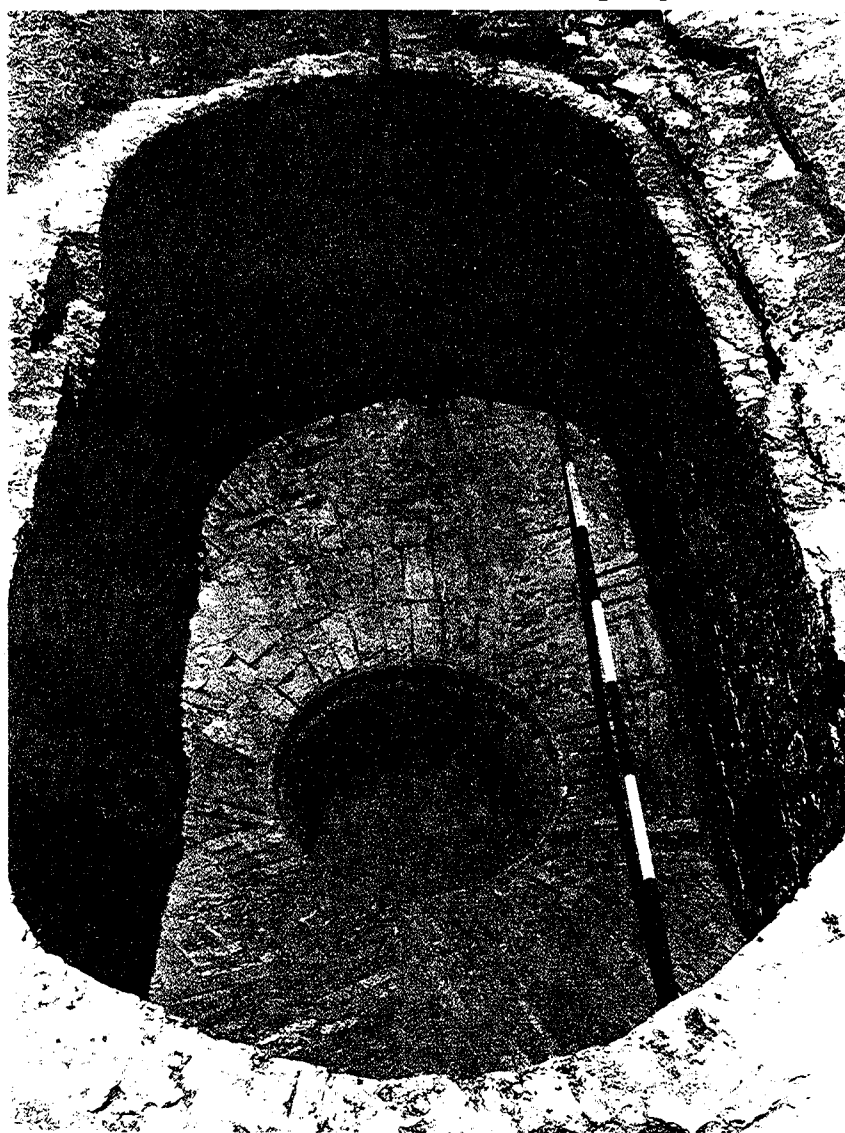


Figure 16.  
Closeup of  
Feature 4 with  
iron pot in  
bottom, looking  
north.

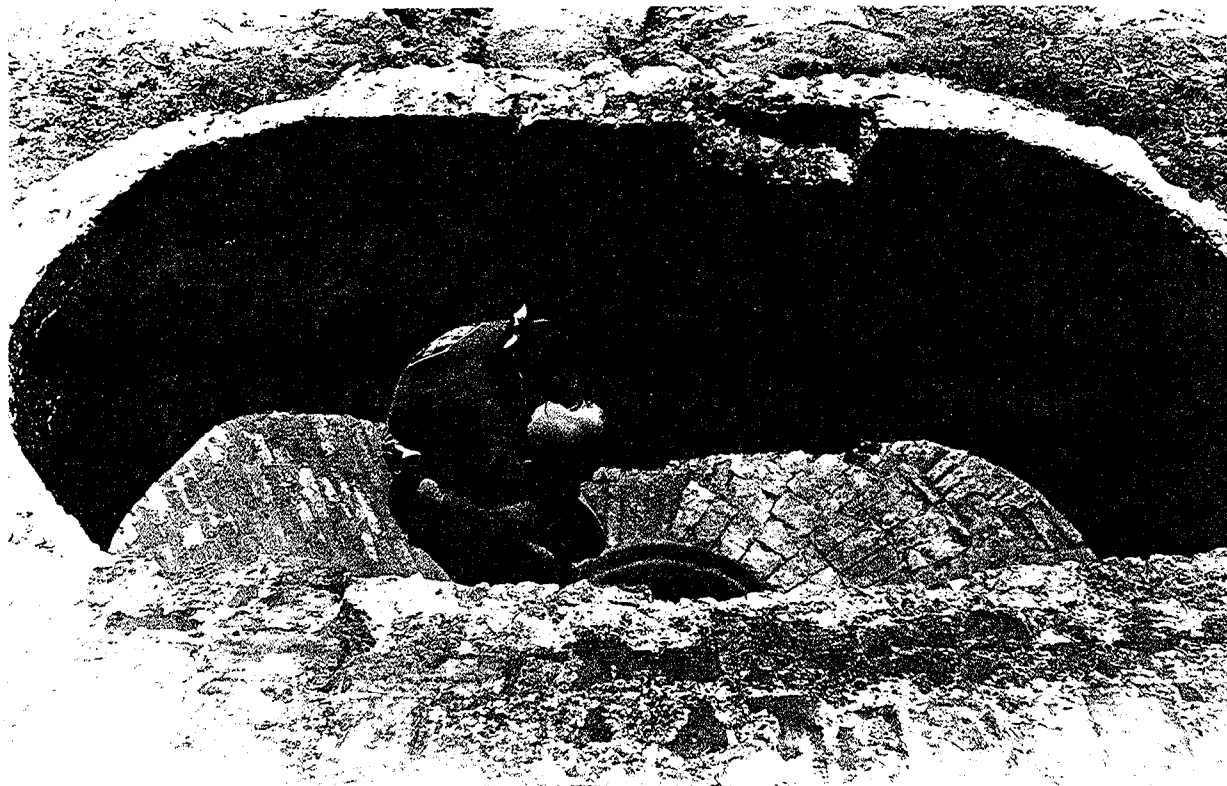


Figure 17. Closeup of Feature 4, looking west.



Figure 18. Closeup of Feature 4, looking east.



Figure 19. Stone pavement in Room 2B, with plastered brick floor and Feature 4, looking southeast.



Figure 20. Stone pavement in Room 2B with Features 5 and 6 in background, looking west.





Figure 21. Northeast corner of building (Room 2), looking southwest.



Figure 22. North end of building; student is excavating Feature 7, looking southwest.



Figure 23. Room 2 with Features 5 and 6 to left, looking northwest.



Figure 24. Features 5 (left) and 6, looking west.

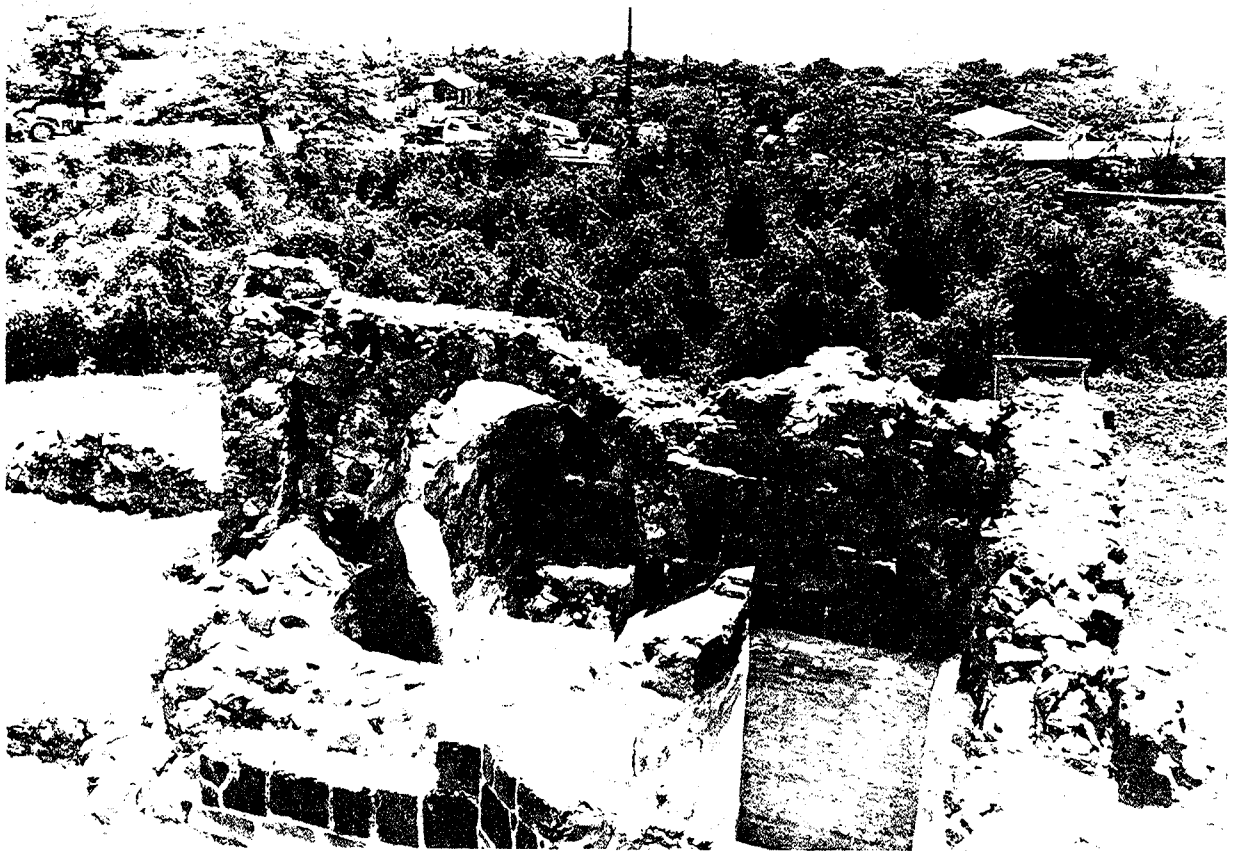


Figure 25. Features 5 and 6 (lower right), looking west.



Figure 26. Interior of Feature 5, looking east.

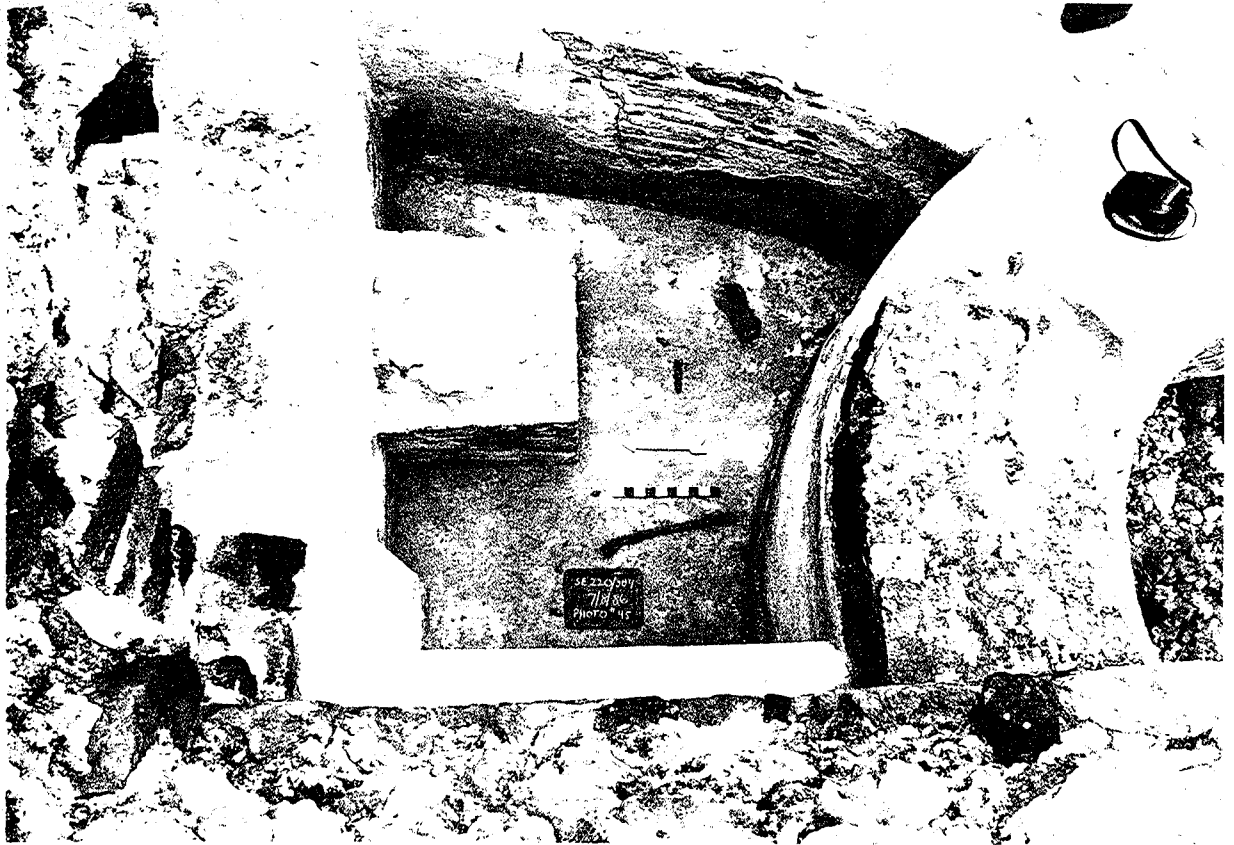


Figure 27. Plan view of Feature 6.



Figure 28.  
Plan view of  
Feature 7.



Figure 29. Elevation view of exterior of Feature 5, looking northeast.



Figure 30. Iron rollers/crushers situated to east of Feature 1C.