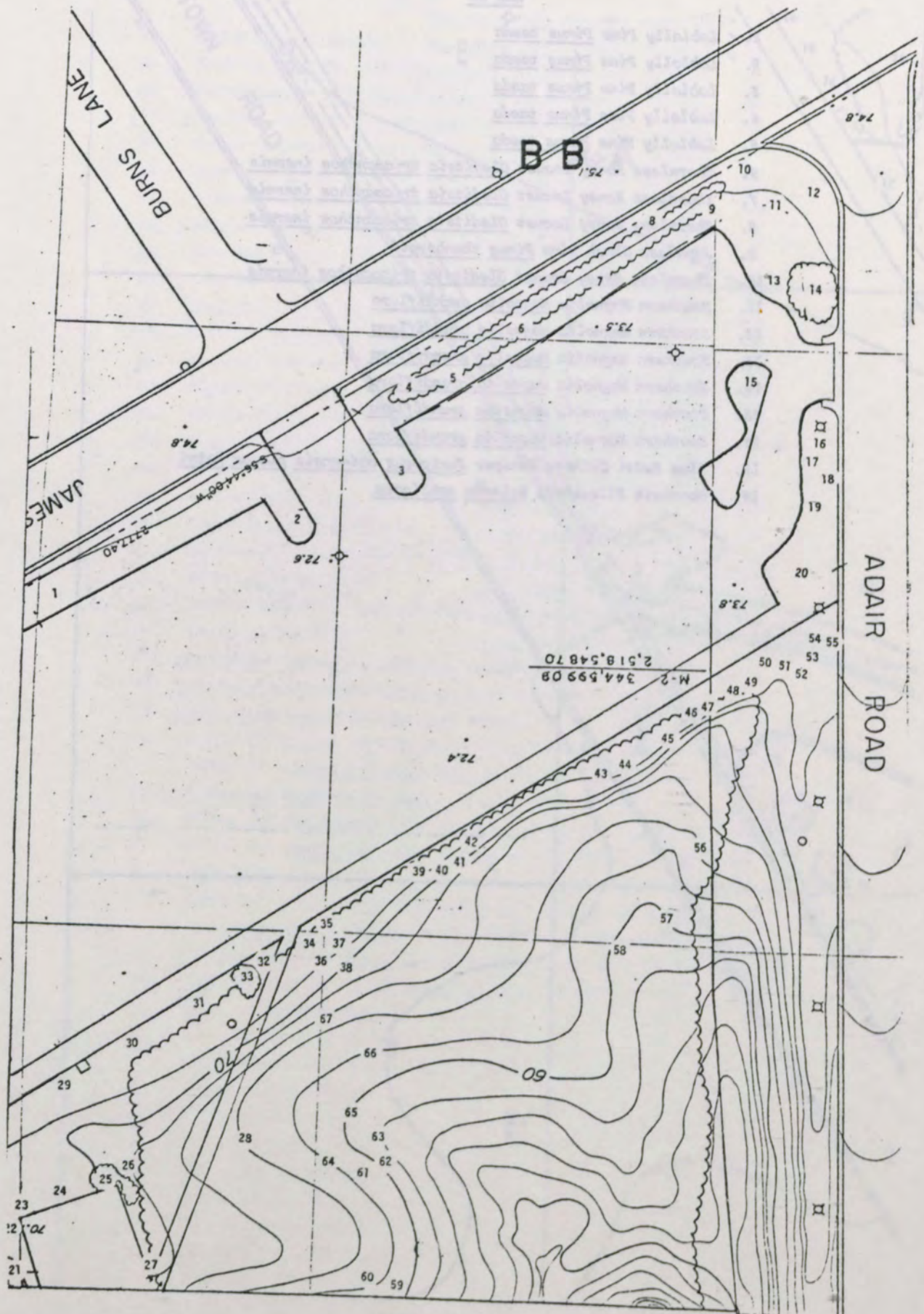


Map AA

1. Loblolly Pine *Pinus taeda*
2. Loblolly Pine *Pinus taeda*
3. Loblolly Pine *Pinus taeda*
4. Loblolly Pine *Pinus taeda*
5. Loblolly Pine *Pinus taeda*
6. Thornless Honey Locust *Gleditsia triacanthos inermis*
7. Thornless Honey Locust *Gleditsia triacanthos inermis*
8. Thornless Honey Locust *Gleditsia triacanthos inermis*
9. Japanese Black Pine *Pinus thunbergii*
10. Thornless Honey Locust *Gleditsia triacanthos inermis*
11. Southern Magnolia *Magnolia grandiflora*
12. Southern Magnolia *Magnolia grandiflora*
13. Southern Magnolia *Magnolia grandiflora*
14. Southern Magnolia *Magnolia grandiflora*
15. Southern Magnolia *Magnolia grandiflora*
16. Southern Magnolia *Magnolia grandiflora*
17. Blue Hetzi Chinese Juniper *Juniperus chinensis glauca hetzi*
18. Mountain Silverbell *Halesia monticola*







Map BB

1. Thornless Honey Locust Gleditsia triacanthos inermis
2. Willow Oak Quercus phellos
3. Willow Oak Quercus phellos
4. Tulip-tree Liriodendron tulipifera
5. Mimosa Albizia julibrissin
6. Wild Black Cherry Prunus serotina
7. Sweetgum Liquidambar styraciflua
8. Wild Black Cherry Prunus serotina
9. Sweetgum Liquidambar styraciflua
10. Flowering Dogwood Cornus florida
11. Flowering Dogwood? Cornus florida
12. Flowering Dogwood Cornus florida
13. Flowering Dogwood Cornus florida
14. Japanese Black Pine Pinus thunbergii
15. Willow Oak Quercus phellos
16. Japanese Black Pine Pinus thunbergii
17. Japanese Black Pine Pinus thunbergii
18. Japanese Black Pine Pinus thunbergii
19. Japanese Black Pine Pinus thunbergii
20. Willow Oak Quercus phellos
21. Blue Hetzi Chinese Juniper Juniperus chinensis glauca hetzi
22. Pyramidal English Oak Quercus robur fastigata
23. Blue Hetzi Chinese Juniper Juniperus chinensis glauca hetzi
24. Firethorn Pyracantha coccinea lalandii
25. Blue Hetzi Chinese Juniper Juniperus chinensis glauca hetzi
26. Pyramidal English Oak Quercus robur fastigata
27. Firethorn Pyracantha coccinea lalandii
28. Rivers Copper Beech Fagus sylvatica atropunicea
29. Southern Magnolia Magnolia grandiflora
30. Southern Magnolia Magnolia grandiflora
31. Southern Magnolia Magnolia grandiflora
32. Southern Magnolia Magnolia grandiflora
33. Blue Hetzi Chinese Juniper Juniperus chinensis glauca hetzi
34. Washington Hawthorn Crataegus phaenopyrum
35. Washington Hawthorn Crataegus phaenopyrum
36. Washington Hawthorn Crataegus phaenopyrum
37. Washington Hawthorn Crataegus phaenopyrum
38. Spanish Oak Quercus falcata
39. Tulip-tree Liriodendron tulipifera
40. American Sycamore Platanus occidentalis
41. American Sycamore Platanus occidentalis
42. American Elm Ulmus americana
43. American Sycamore Platanus occidentalis
44. American Sycamore Platanus occidentalis
45. American Sycamore Platanus occidentalis
46. American Sycamore Platanus occidentalis
47. American Sycamore Platanus occidentalis
48. American Sycamore Platanus occidentalis
49. American Sycamore Platanus occidentalis



Map BB

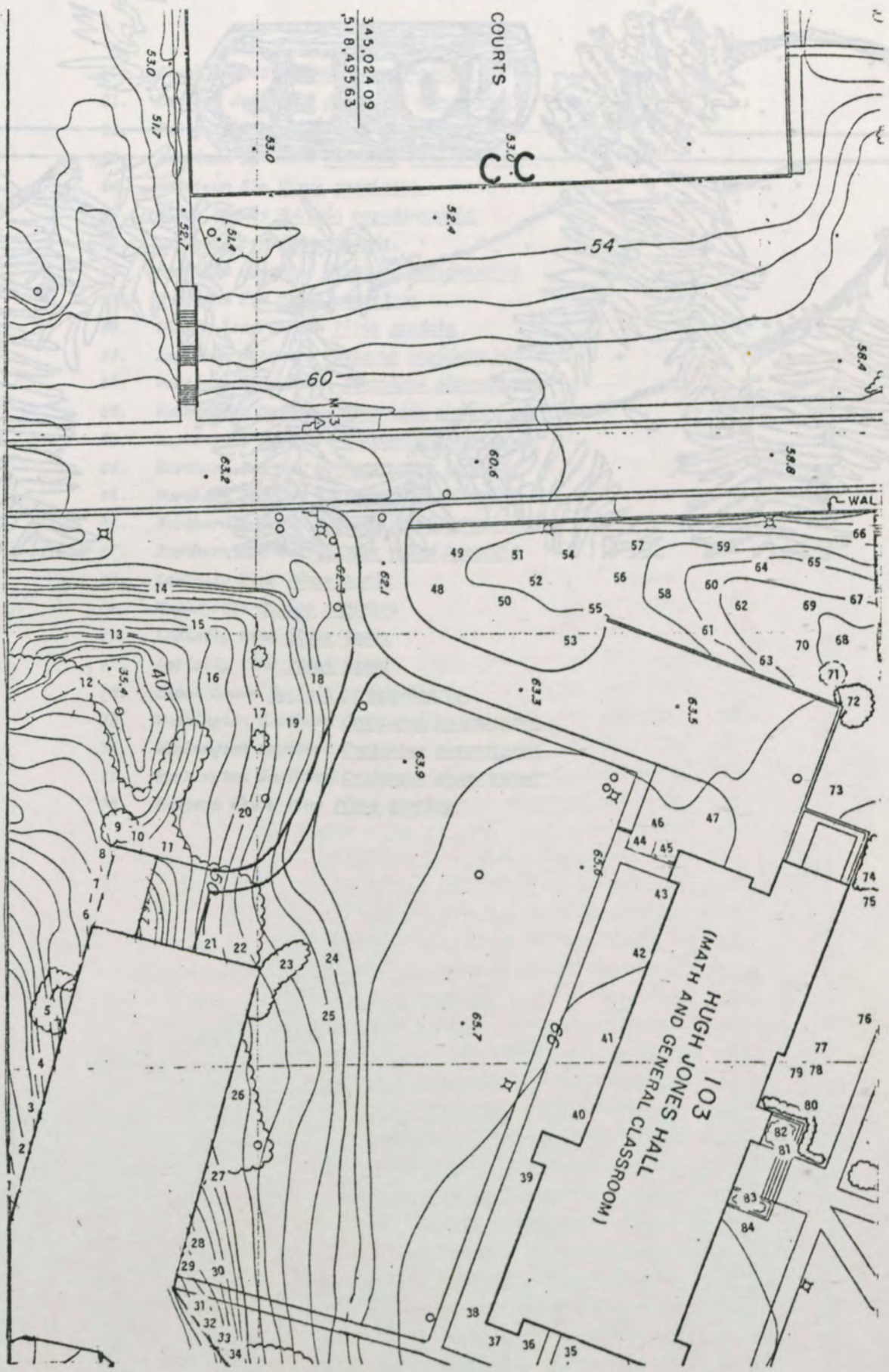
50. Black Locust Robinia pseudo-acacia
51. Eastern Red Cedar Juniperus virginiana
52. Tulip-tree Liriodendron tulipifera
53. American Sycamore Platanus occidentalis
54. American Elm Ulmus americana
55. Black Locust Robinia pseudo-acacia
56. Loblolly Pine Pinus taeda
57. American Sycamore Platanus occidentalis
58. American Elm Ulmus americana
59. Little-leaf Linden Tilia cordata
60. American Sycamore Platanus occidentalis
61. Washington Hawthorn Crataegus phaenopyrum
62. Washington Hawthorn Crataegus phaenopyrum
63. Washington Hawthorn Crataegus phaenopyrum
64. Northern Red Oak Quercus rubra borealis
65. Northern Red Oak Quercus rubra borealis
66. Northern Red Oak Quercus rubra borealis
67. Northern Red Oak Quercus rubra borealis
68. Loblolly Pine Pinus taeda
69. Wax-myrtle Myrica cerifera
70. Loblolly Pine Pinus taeda
71. Loblolly Pine Pinus taeda
72. Black Locus Robinia pseudo-acacia
73. Washington Hawthorn Crataegus phaenopyrum
74. Washington Hawthorn Crataegus phaenopyrum
75. Washington Hawthorn Crataegus phaenopyrum
76. Eastern White Pine Pinus strobus





NOTES





345,024.09  
518,495.63

COURTS

103  
HUGH JONES HALL  
(MATH AND GENERAL CLASSROOM)



Map CC

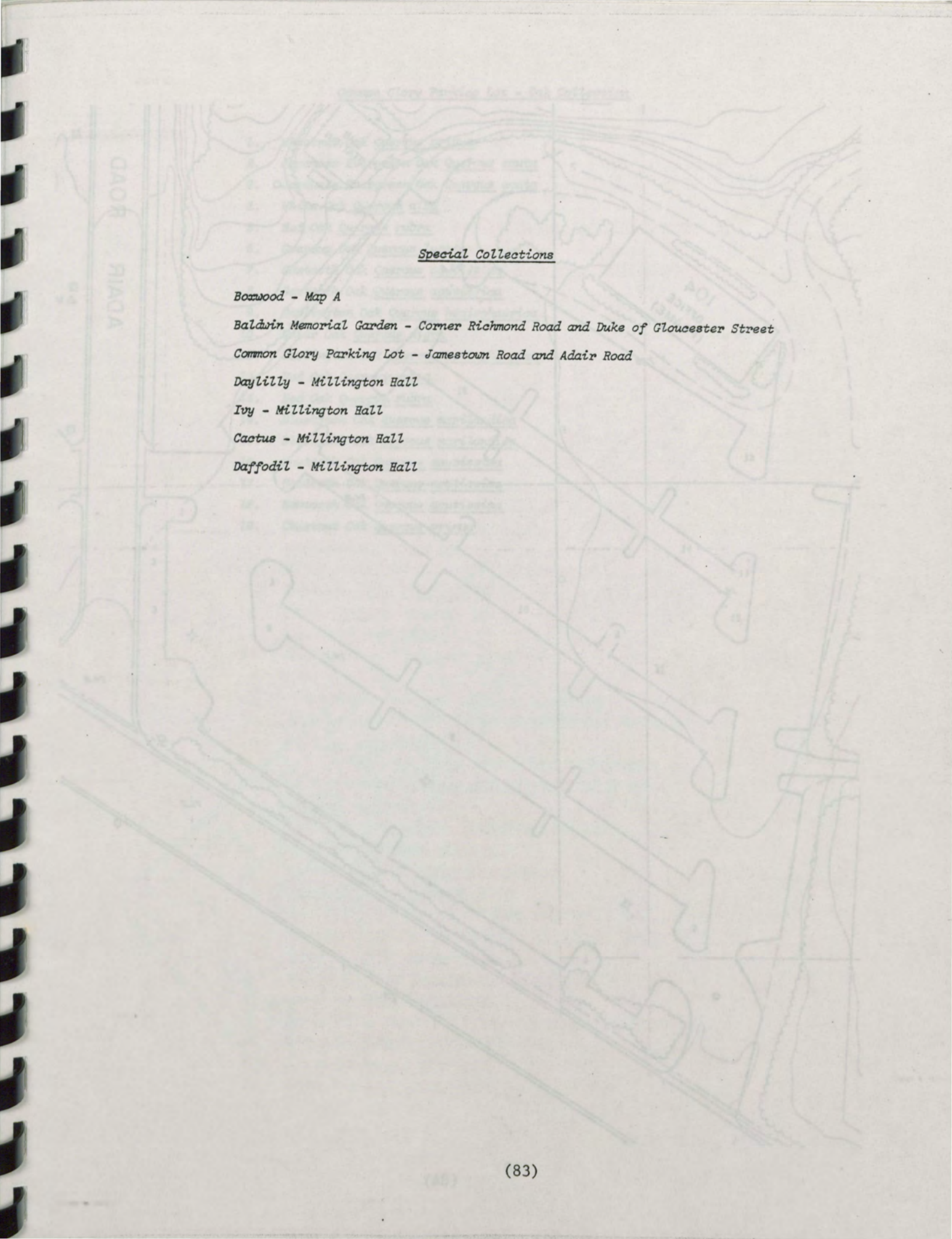
1. Firethorn *Pyracantha coccinea lalandii*
2. Atlas Cedar *Cedrus atlantica*
3. Atlas Cedar *Cedrus atlantica*
4. Atlas Cedar *Cedrus atlantica*
5. Blue Hetzi Chinese Juniper *Juniperus chinensis glauca hetzi*
6. Firethorn *Pyracantha coccinea lalandii*
7. Firethorn *Pyracantha coccinea lalandii*
8. Firethorn *Pyracantha coccinea lalandii*
9. Blue Hetzi Chinese Juniper *Juniperus chinensis glauca hetzi*
10. Firethorn *Pyracantha coccinea lalandii*
11. Firethorn *Pyracantha coccinea lalandii*
12. Weeping Willow *Salix babylonica*
13. Washington Hawthorn *Crataegus phaenopyrum*
14. Washington Hawthorn *Crataegus phaenopyrum*
15. Washington Hawthorn *Crataegus phaenopyrum*
16. Washington Hawthorn *Crataegus phaenopyrum*
17. Washington Hawthorn *Crataegus phaenopyrum*
18. Washington Hawthorn *Crataegus phaenopyrum*
19. Washington Hawthorn *Crataegus phaenopyrum*
20. Little-leaf Linden *Tilia cordata*
21. Blue Hetzi Chinese Juniper *Juniperus chinensis glauca hetzi*
22. Atlas Cedar *Cedrus atlantica*
23. Blue Hetzi Chinese Juniper *Juniperus chinensis glauca hetzi*
24. Beech *Fagus grandifolia*
25. American Sycamore *Platanus occidentalis*
26. Atlas Cedar *Cedrus atlantica*
27. Atlas Cedar *Cedrus atlantica*
28. Atlas Cedar *Cedrus atlantica*
29. Common Box *Buxus sempervirens*
30. Common Box *Buxus sempervirens*
31. Common Box *Buxus sempervirens*
32. Common Box *Buxus sempervirens*
33. Common Box *Buxus sempervirens*
34. Common Box *Buxus sempervirens*
35. American Holly *Ilex opaca*
36. American Holly *Ilex opaca*
37. Wax-myrtle *Myrica cerifera*
38. Wax-myrtle *Myrica cerifera*
39. Double Flowering Cherry *Prunus serrulata*
40. Wax-myrtle *Myrica cerifera*
41. Wax-myrtle *Myrica cerifera*
42. Wax-myrtle *Myrica cerifera*



Map CC

43. Wax-myrtle Myrica cerifera
44. Japanese Holly Ilex crenata conveza
45. Buford Holly Ilex cornuta bufordii
46. American Holly Ilex opaca
47. Willow Oak Quercus phellos
48. Western Red Cedar variety Juniperus scopulorum blue haven
49. Eastern Red Cedar variety Juniperus virginiana burkii
50. Eastern Red Cedar variety Juniperus virginiana burkii
51. Western Red Cedar variety Juniperus scopulorum blue haven
52. Western Red Cedar variety Juniperus scopulorum welohii
53. Chinese Juniper variety Juniperus chinensis fairview
54. Western Red Cedar variety Juniperus scopulorum welohii
55. Chinese Juniper variety Juniperus chinensis fairview
56. Eastern Red Cedar variety Juniperus virginiana glauca
57. Eastern Red Cedar variety Juniperus virginiana glauca
58. Eastern Red Cedar variety Juniperus virginiana canaertii
59. Eastern Red Cedar variety Juniperus virginiana canaertii
60. Chinese Juniper variety Juniperus chinensis mountbatten
61. Chinese Juniper variety Juniperus chinensis mountbatten
62. Eastern Red Cedar variety Juniperus virginiana
63. Eastern Red Cedar variety Juniperus virginiana
64. Eastern Red Cedar variety Juniperus virginiana canaertii
65. Eastern Red Cedar variety Juniperus virginiana cupressifolia
66. Juniper Juniperus sp.
67. Chinese Juniper variety Juniperus chinensis maney
68. Juniper Juniperus sp.
69. Juniper Juniperus sp.
70. Eastern Red Cedar variety Juniperus virginiana cupressifolia
71. Loblolly Pine Pinus taeda
72. Wax-myrtle Myrica cerifera
73. Southern Magnolia Magnolia grandiflora
74. Wax-myrtle Myrica cerifera
75. Flowering Dogwood Cornus florida
76. Willow Oak Quercus phellos
77. Fortune Osmanthus Osmanthus fortunei
78. Fortune Osmanthus Osmanthus fortunei
79. Fortune Osmanthus Osmanthus fortunei
80. Japanese Holly Ilex crenata conveza
81. Buford Holly Ilex cornuta bufordii
82. Sweetbay Magnolia virginiana
83. Buford Holly Ilex cornuta bufordii
84. American Holly Ilex opaca





Special Collections

*Boxwood - Map A*

*Baldwin Memorial Garden - Corner Richmond Road and Duke of Gloucester Street*

*Common Glory Parking Lot - Jamestown Road and Adair Road*

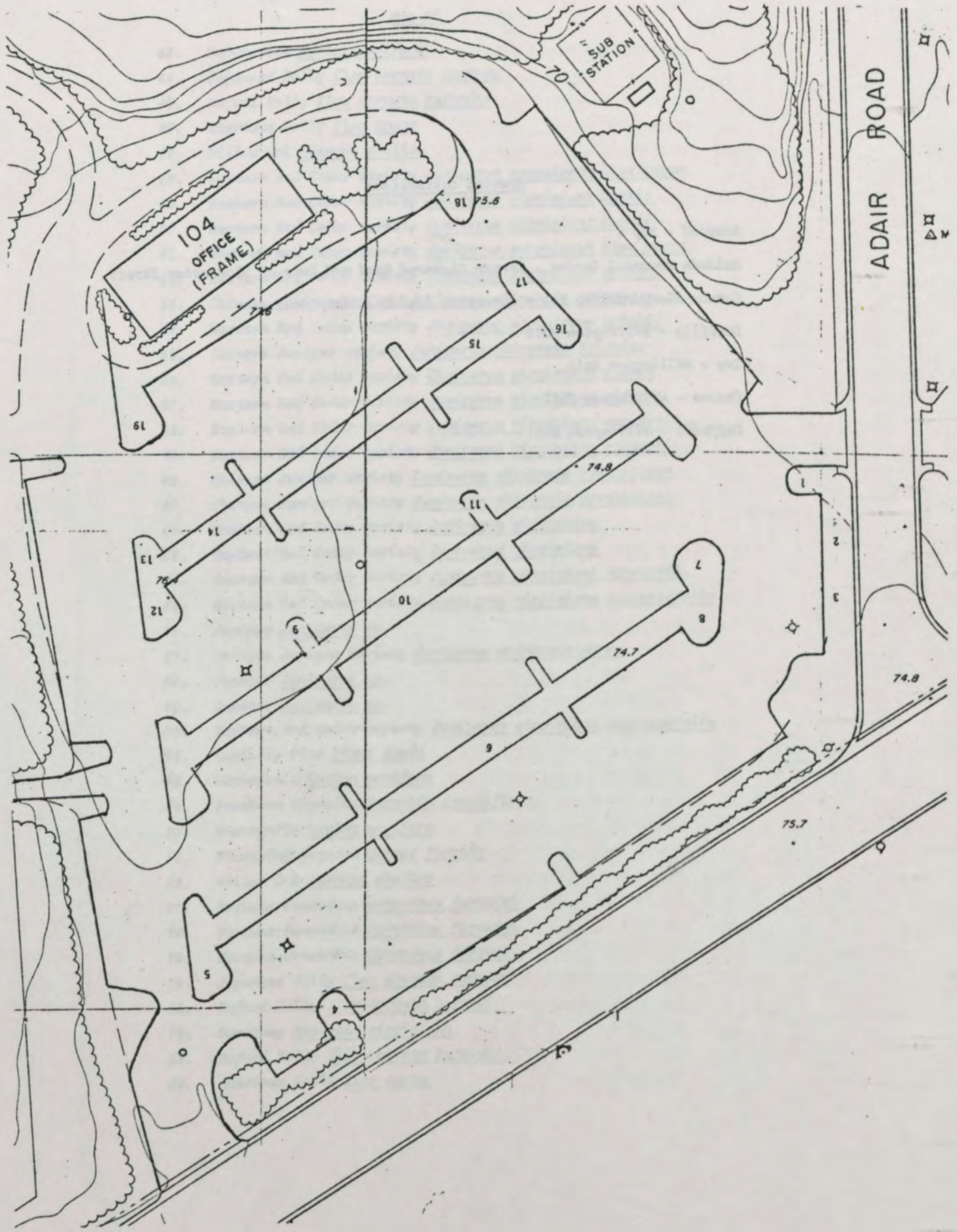
*Daylily - Millington Hall*

*Ivy - Millington Hall*

*Cactus - Millington Hall*

*Daffodil - Millington Hall*

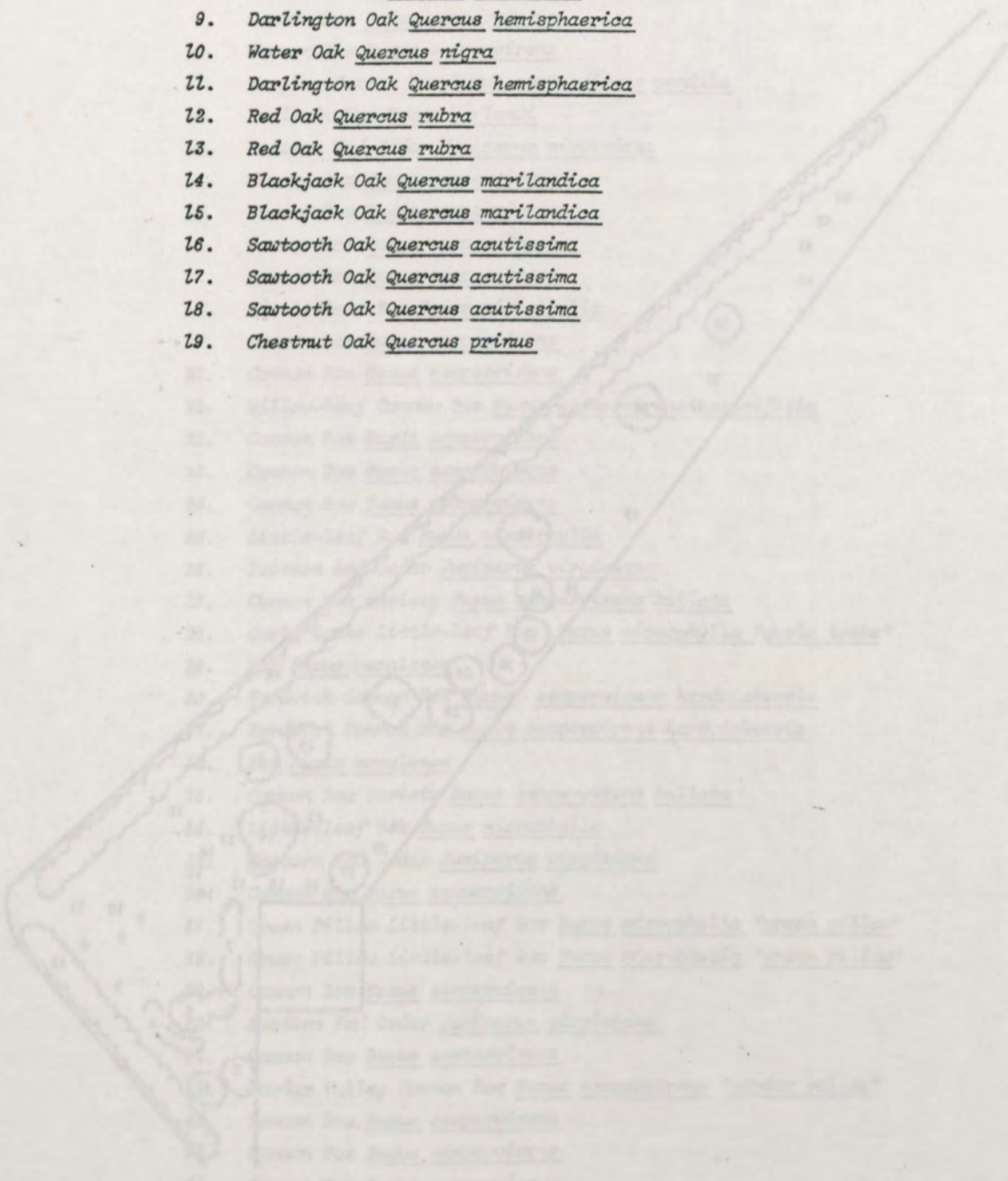




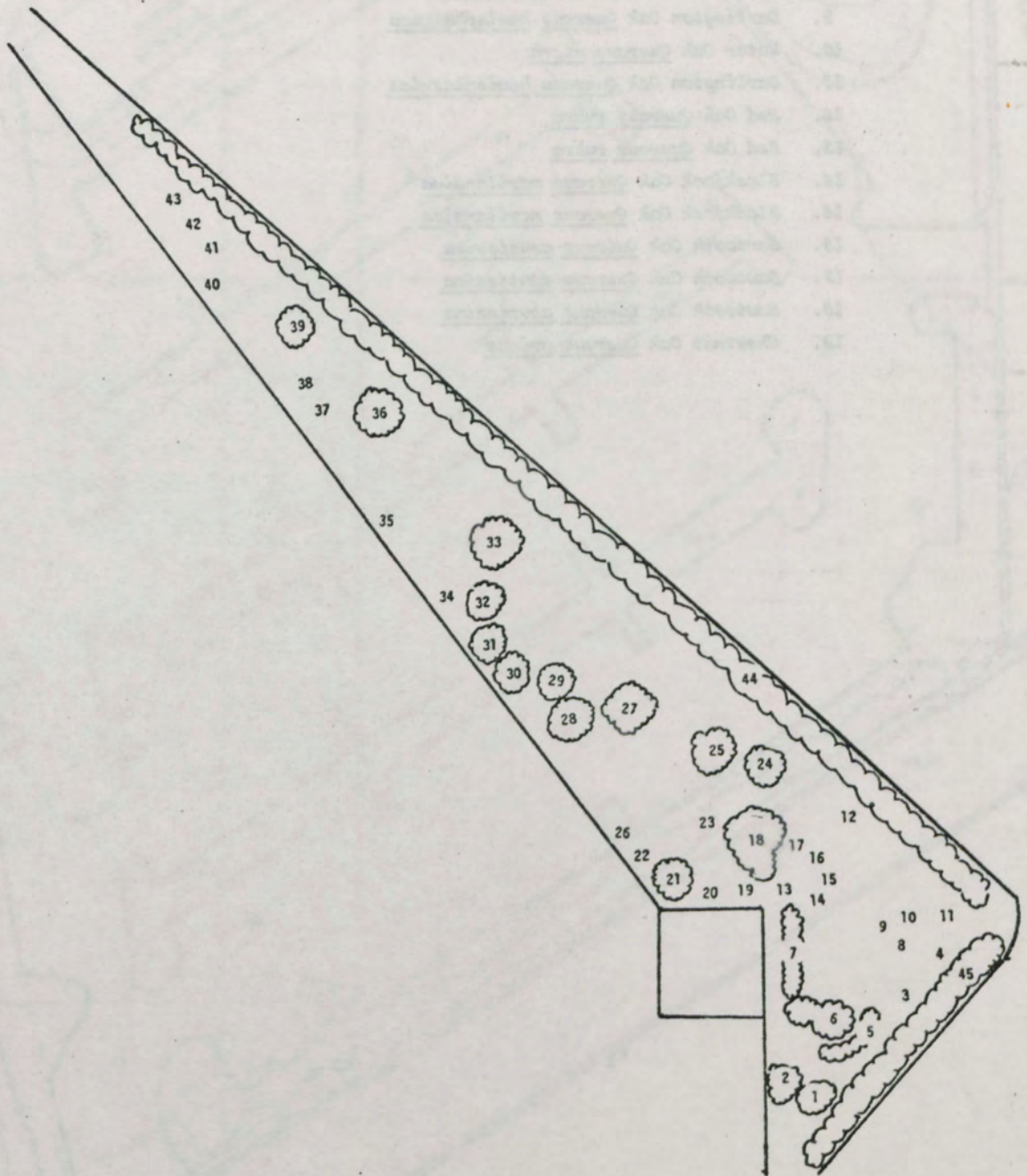


Common Glory Parking Lot - Oak Collection

1. Chestnut Oak Quercus prinus
2. Japanese Evergreen Oak Quercus acuta
3. Japanese Evergreen Oak Quercus acuta
4. White Oak Quercus alba
5. Red Oak Quercus rubra
6. Overcup Oak Quercus lyrata
7. Sawtooth Oak Quercus acutissima
8. Sawtooth Oak Quercus acutissima
9. Darlington Oak Quercus hemisphaerica
10. Water Oak Quercus nigra
11. Darlington Oak Quercus hemisphaerica
12. Red Oak Quercus rubra
13. Red Oak Quercus rubra
14. Blackjack Oak Quercus marilandica
15. Blackjack Oak Quercus marilandica
16. Sawtooth Oak Quercus acutissima
17. Sawtooth Oak Quercus acutissima
18. Sawtooth Oak Quercus acutissima
19. Chestnut Oak Quercus prinus









Boxwood Collection

1. Little-leaf Box Buxus microphylla
2. Little-leaf Box Buxus microphylla
3. Common Box Buxus sempervirens
4. Common Box Buxus sempervirens
5. Kingsville Dwarf Little-leaf Box Buxus microphylla compacta
6. Little-leaf Box Buxus microphylla
7. Kingsville Dwarf Little-leaf Box Buxus microphylla compacta
8. Common Box Buxus sempervirens
9. Common Box Buxus sempervirens
10. Common Box Buxus sempervirens
11. Weeping Common Box Buxus sempervirens pendula
12. Harlands Box Buxus harlandi
13. Eastern Red Cedar Juniperus virginiana
14. Common Box Buxus sempervirens
15. Common Box Buxus sempervirens
16. Common Box Buxus sempervirens
17. Common Box Buxus sempervirens
18. Little-leaf Box Buxus microphylla
19. Common Box Buxus sempervirens
20. Common Box Buxus sempervirens
21. Willow-leaf Common Box Buxus sempervirens salicifolia
22. Common Box Buxus sempervirens
23. Common Box Buxus sempervirens
24. Common Box Buxus sempervirens
25. Little-leaf Box Buxus microphylla
26. Eastern Red Cedar Juniperus virginiana
27. Common Box variety Buxus sempervirens bullata
28. Curly Locks Little-leaf Box Buxus microphylla "curly locks"
29. Box Buxus nepalense
30. Hardwick Common Box Buxus sempervirens hardwickensis
31. Hardwick Common Box Buxus sempervirens hardwickensis
32. Box Buxus nepalense
33. Common Box variety Buxus sempervirens bullata
34. Little-leaf Box Buxus microphylla
35. Eastern Red Cedar Juniperus virginiana
36. Common Box Buxus sempervirens
37. Green Pillow Little-leaf Box Buxus microphylla "green pillow"
38. Green Pillow Little-leaf Box Buxus microphylla "green pillow"
39. Common Box Buxus sempervirens
40. Eastern Red Cedar Juniperus virginiana
41. Common Box Buxus sempervirens
42. Vardar Valley Common Box Buxus sempervirens "vardar valley"
43. Common Box Buxus sempervirens
44. Common Box Buxus sempervirens
45. Common Box Buxus sempervirens



John T. Baldwin Memorial Garden

1. Chinese Holly variety Ilex cornuta rotunda
2. Pistachio Pistacia chinensis
3. Common Crapemyrtle Lagerstroemia indica
4. Fastigate Lorna Baldwin Peach Prunus persica
5. Fastigate Lorna Baldwin Peach Prunus persica
6. Hardwick Common Box Buxus sempervirens hardwickensis
7. Hardwick Common Box Buxus sempervirens hardwickensis
8. Vardar Valley Common Box Buxus sempervirens "vardar valley"
9. Vardar Valley Common Box Buxus sempervirens "vardar valley"
10. Vardar Valley Common Box Buxus sempervirens "vardar valley"
11. Hardwick Common Box Buxus sempervirens hardwickensis
12. Hardwick Common Box Buxus sempervirens hardwickensis
13. Hardwick Common Box Buxus sempervirens hardwickensis
14. Kingsville Dwarf Little-leaf Box Buxus microphylla compacta
15. Kingsville Dwarf Little-leaf Box Buxus microphylla compacta
16. Kingsville Dwarf Little-leaf Box Buxus microphylla compacta
17. Kingsville Dwarf Little-leaf Box Buxus microphylla compacta
18. Kingsville Dwarf Little-leaf Box Buxus microphylla compacta
19. Kingsville Dwarf Little-leaf Box Buxus microphylla compacta
20. Vardar Valley Common Box Buxus sempervirens "vardar valley"
21. Vardar Valley Common Box Buxus sempervirens "vardar valley"
22. Vardar Valley Common Box Buxus sempervirens "vardar valley"
23. Vardar Valley Common Box Buxus sempervirens "vardar valley"
24. Hardwick Common Box Buxus sempervirens hardwickensis
25. Hardwick Common Box Buxus sempervirens hardwickensis



IVY COLLECTION - VARIETIES OF HEDERA HELIX (S-173)

1. BUTTERCUP--interesting because the new growth is a rich golden color which turns to dark green upon maturity.
2. BIRDSFOOT--a unique leaf pattern where the lobes are selectively elongate to form a structure which resembles a "foot". Marginal lobes elongated.
3. GOLD HEART--this pattern of variegation involves the formation of yellow pigmentation at the base of the blade.
4. GRACILIS--leaves dark-green with 3 twisted lobes. Vigorous growth with "graceful" appearance.
5. SWEETHEART--a slow growing variety with small, dark green, cordate leaves. Not prominently lobed.
6. TRITON--leaves with 3-5 palmately arranged "finger-like" elongated lobes. Rapidly growing.
7. GOLDDUST--interesting pattern of variegation with random "blotches" of yellow-green pigmentation.
8. GLACIER--vigorous, hardy variety. Striking green and white variegation pattern of smooth leaves.
9. CROWSFOOT--long, narrow pointed lobes with dissected appearance of the leaves. A miniature, slow growing variety.
10. PLUME-D-OR--smooth, dark-green leaves which are deeply lobed. Moderate rate of growth.
11. FAN--leaves with shallow lobes and light-green coloration. Edge of leaf has scalloped appearance.
12. RUFFLES--prominent veins with shallow lobes. Leaf margin develops undulating pattern to provide ruffled appearance.
13. IVALACE--leaves shiny with prominent veins. Margins crinkled to produce "lacy" appearance.



OPUNTIA COLLECTION - HARDY CACTI SELECTED

FOR TOLERANCE TO LOW TEMPERATURES (S-174)

True Cacti, including the genus *Opuntia*, were not known in Europe prior to the discovery of the New World. The 250 *Opuntia* species represent curiosities, food sources and pests in areas where they have been introduced since Coronado's account in 1540. Cacti (Greek - Prickly thistle), members of the family Cactaceae, are categorized into tribes which include the *Opuntias*. These stem succulents bear transient leaves which are shed at maturity and produce spines which are associated with glochids (small barbed hairs). The flowers are wheel-shaped forming a short tube. The fruit of the prickly pear is a delicacy while the young stems are eaten as a green vegetable.

Microdasymas (Bunny ears) - dwarf Mexican species with flat, oblong spineless pads covered with golden tufts.

Imbricata - tree-like often 3 meters in height, with yellow fruit. A native of Kansas with distribution from central Colorado to Texas, New Mexico and central Mexico.

Humifusa - form oblong, red, juicy edible fruit in sandy and rocky sites from Massachusetts and southern Ontario to Virginia.

Davisii - distribution from western Texas and eastern New Mexico. Named for Jefferson Davis.

Spinosior - plants 2 to 4 meters high and tree-like with woody trunks. Found in Arizona, western New Mexico and northern Mexico.

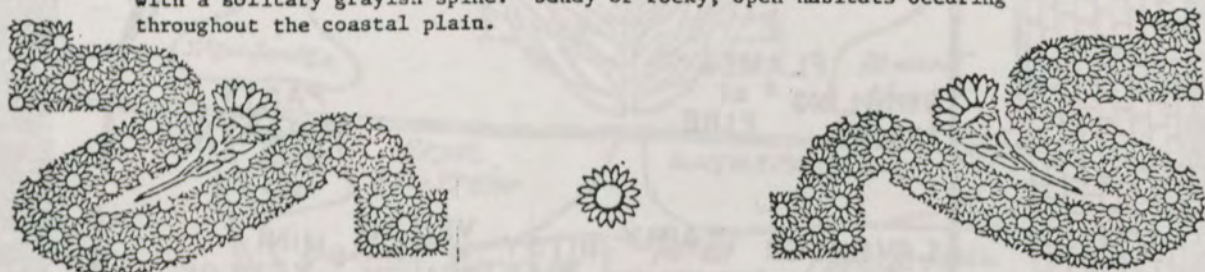
Englemanni - from Chihuahua to Arizona, New Mexico and Texas. Large yellow flowers with red fruits.

Linguiformis - bushy plants found in southern Texas. Commonly called Cow's tongue opuntia.

Drummondii - found in sandy soils from northern Florida to Pamlico Sound, North Carolina. Difficult to flower.

Macrorhiza - roots tuberous resembling sweet potatoes. Found from Missouri and Kansas to Texas.

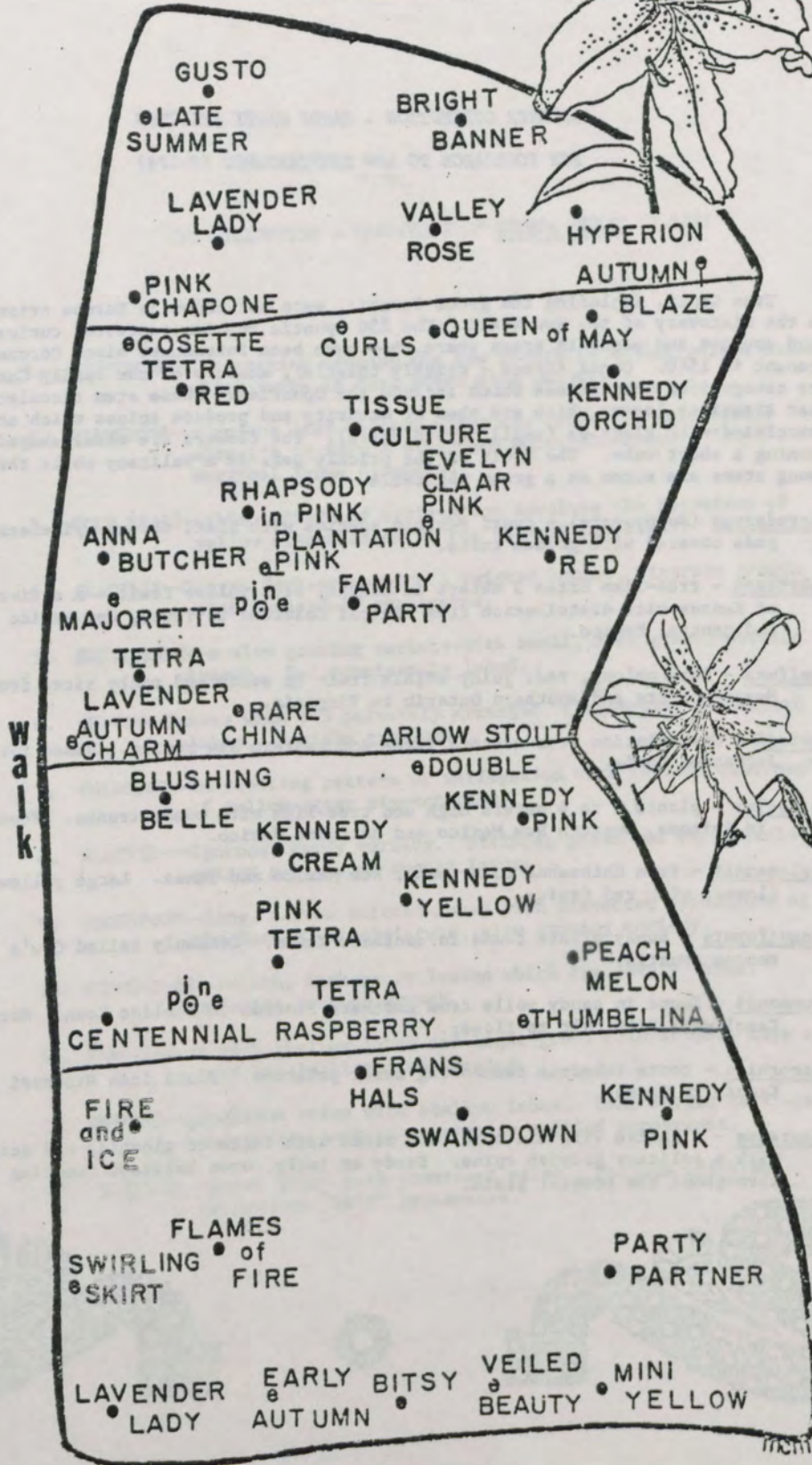
Compressa - a native Virginia species. Stems with tufts of glochids and occasionally with a solitary grayish spine. Sandy or rocky, open habitats occurring throughout the coastal plain.





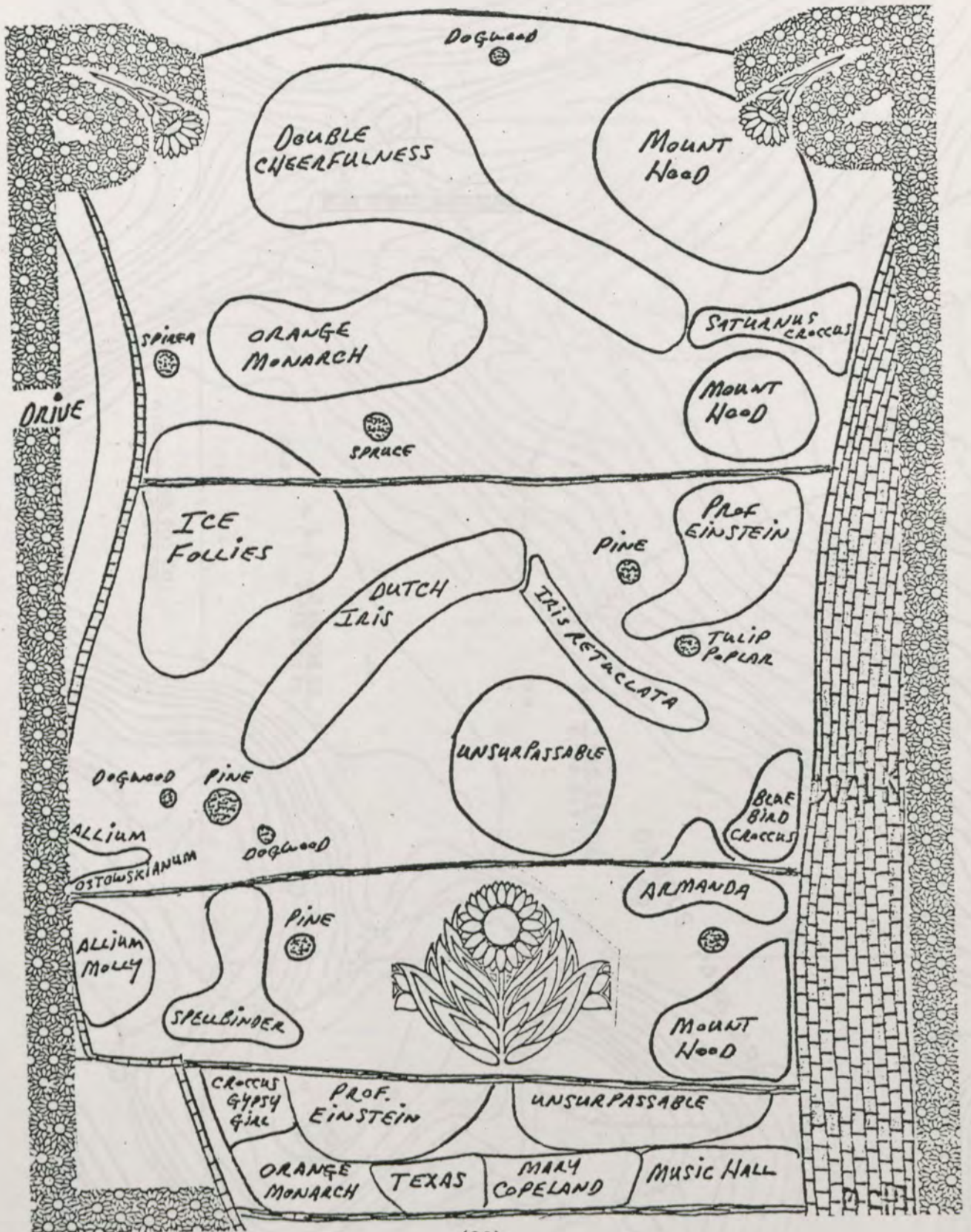
DAYLILY DISPLAY  
 (surrounding T-15 to 18)

DAYLILY  
 DISPLAY





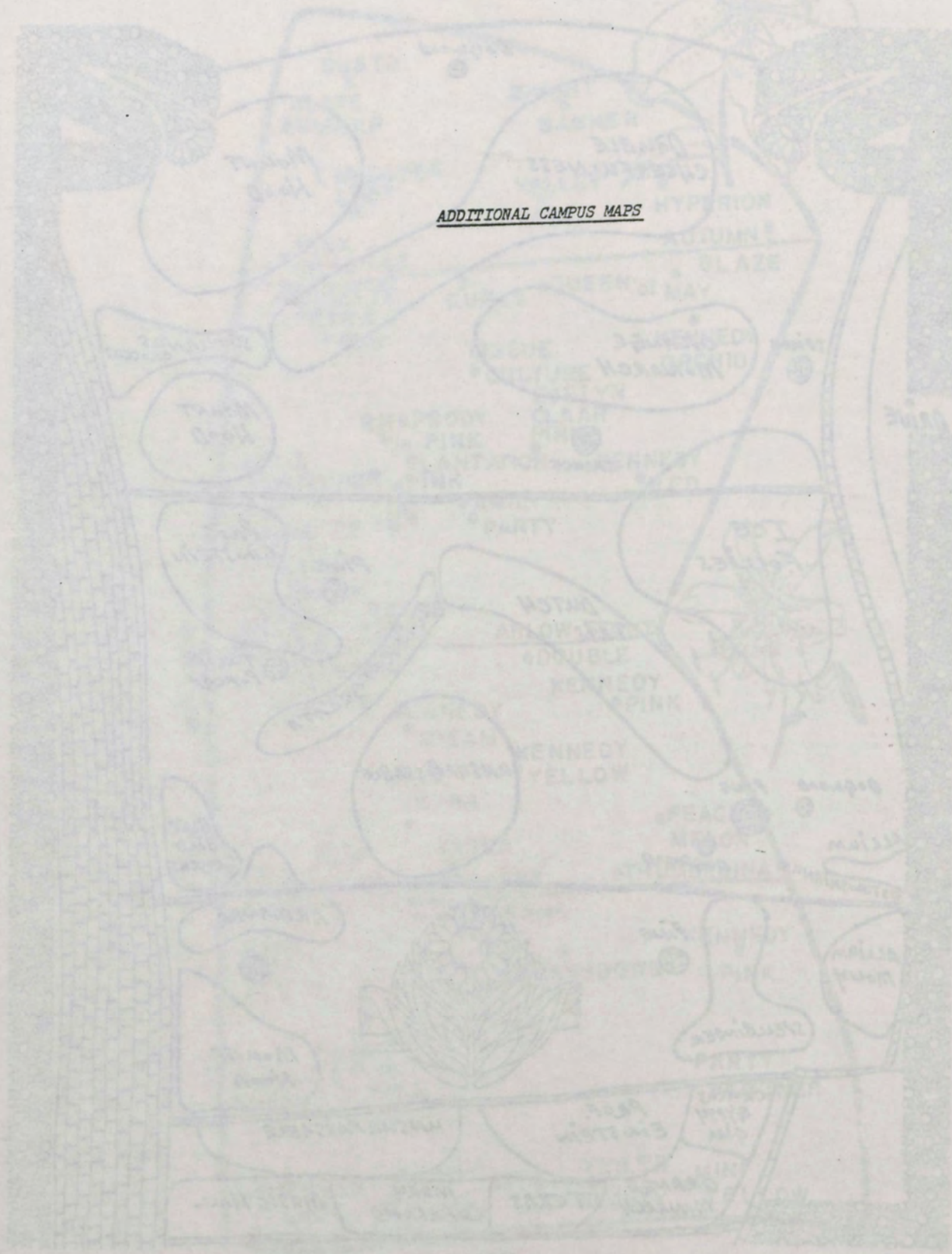
DAFFODIL DISPLAY (surrounding T-5 to L4)





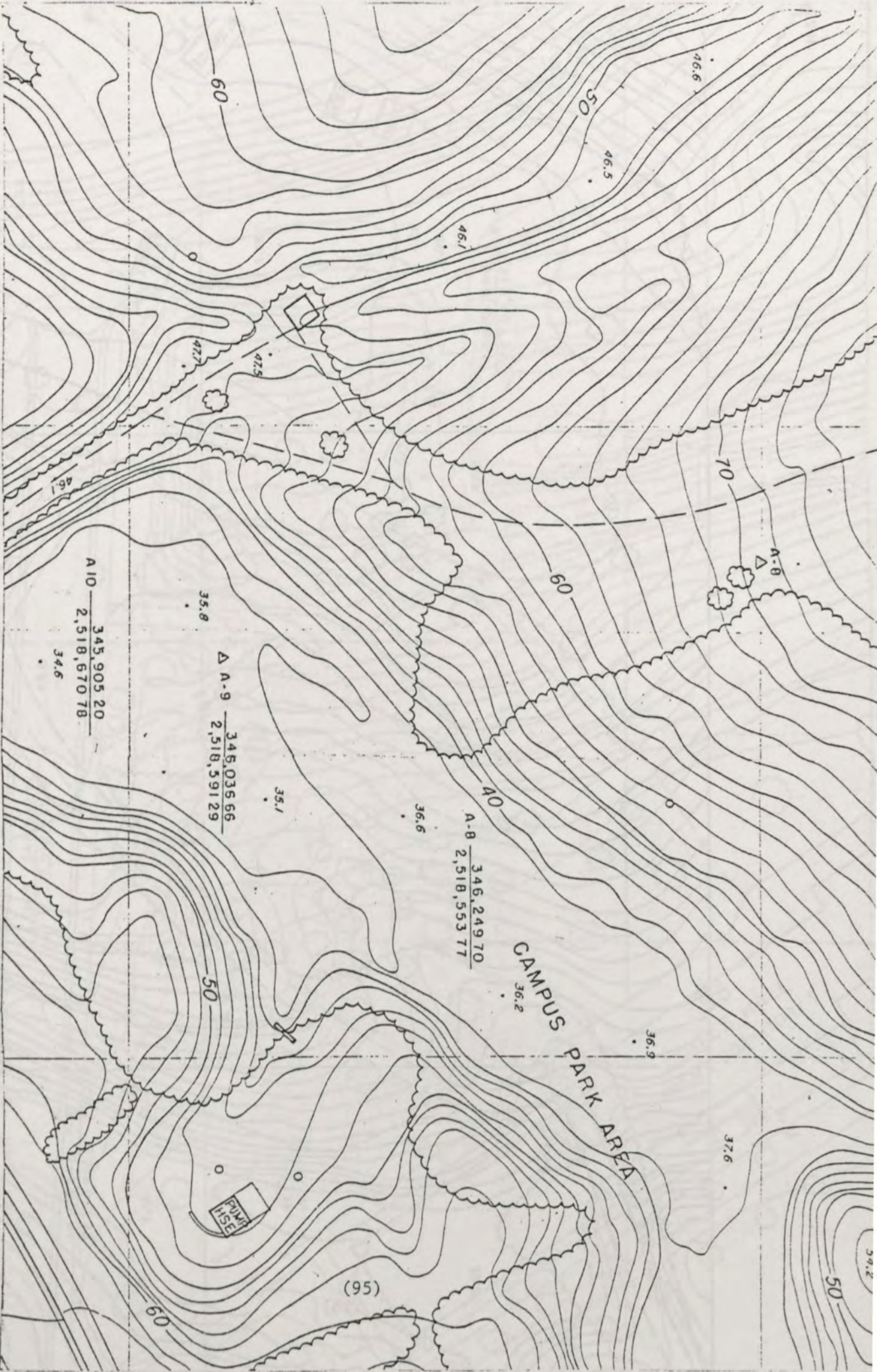
# BATHY DISPLAY

INT of L.O. (International Laborer Union)



## ADDITIONAL CAMPUS MAPS





A-10  $\frac{345,905.20}{2,518,670.78}$   
34.6

A-9  $\frac{345,036.66}{2,518,591.29}$   
35.1

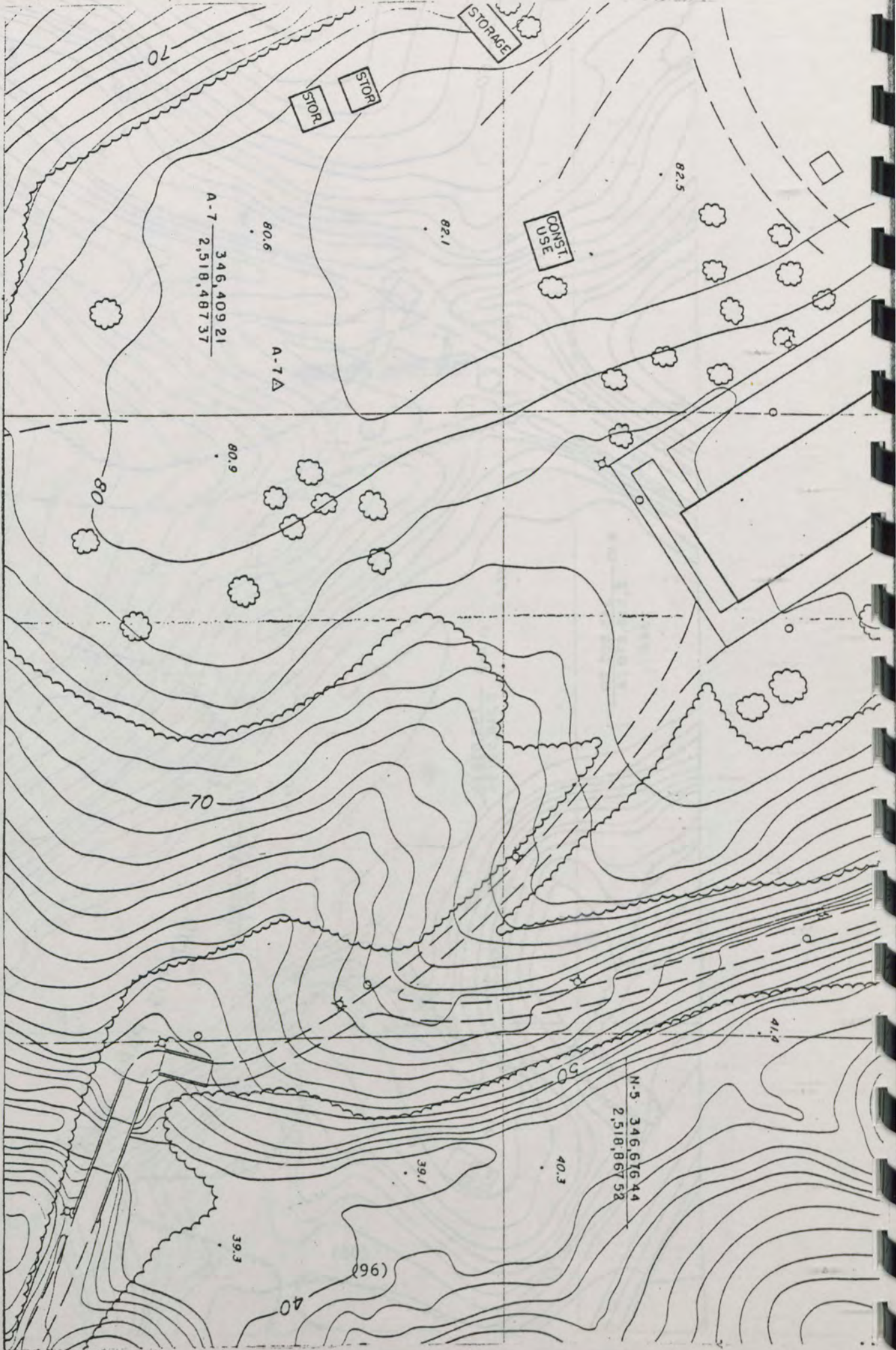
A-8  $\frac{346,249.70}{2,518,553.77}$   
36.6

CAMPUS PARK AREA  
36.2

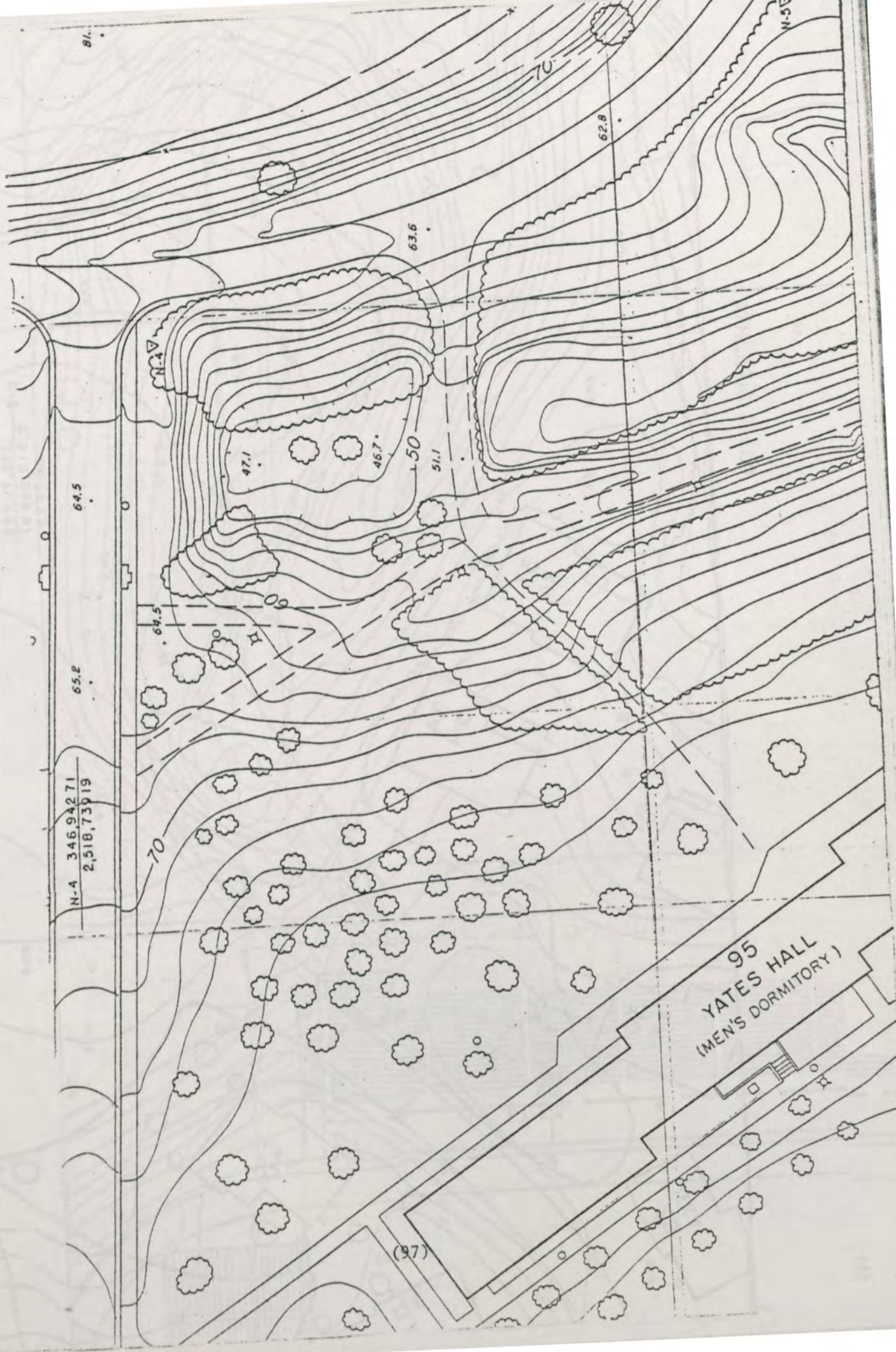
PUMP HOUSE

(95)









81.

N-50

70

62.8

63.6

N-47

47.1

46.7

51.1

50

64.5

65.2

64.5

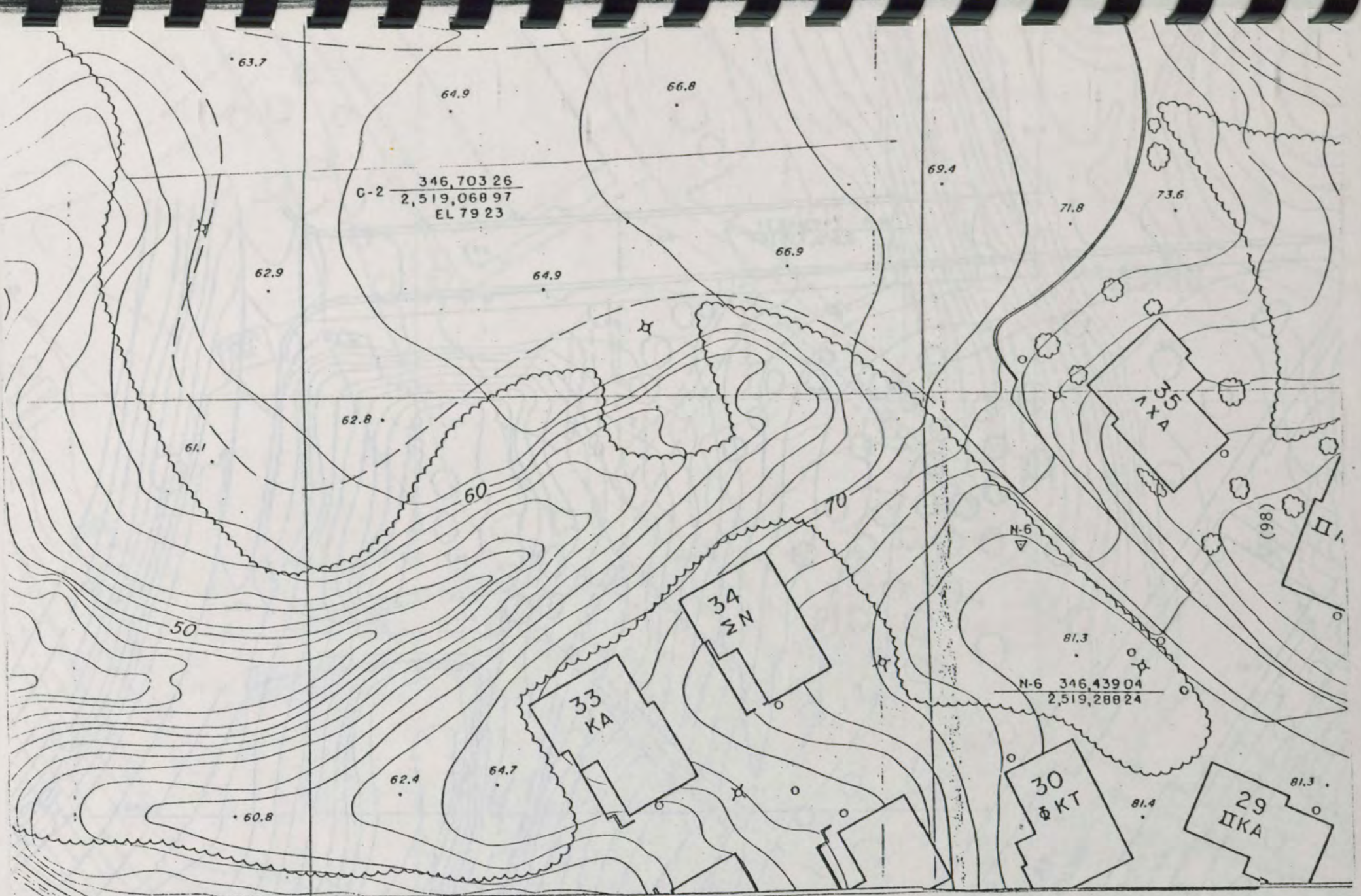
70

N-4 346,942,71  
2,518,739,19

95  
YATES HALL  
(MENS DORMITORY)

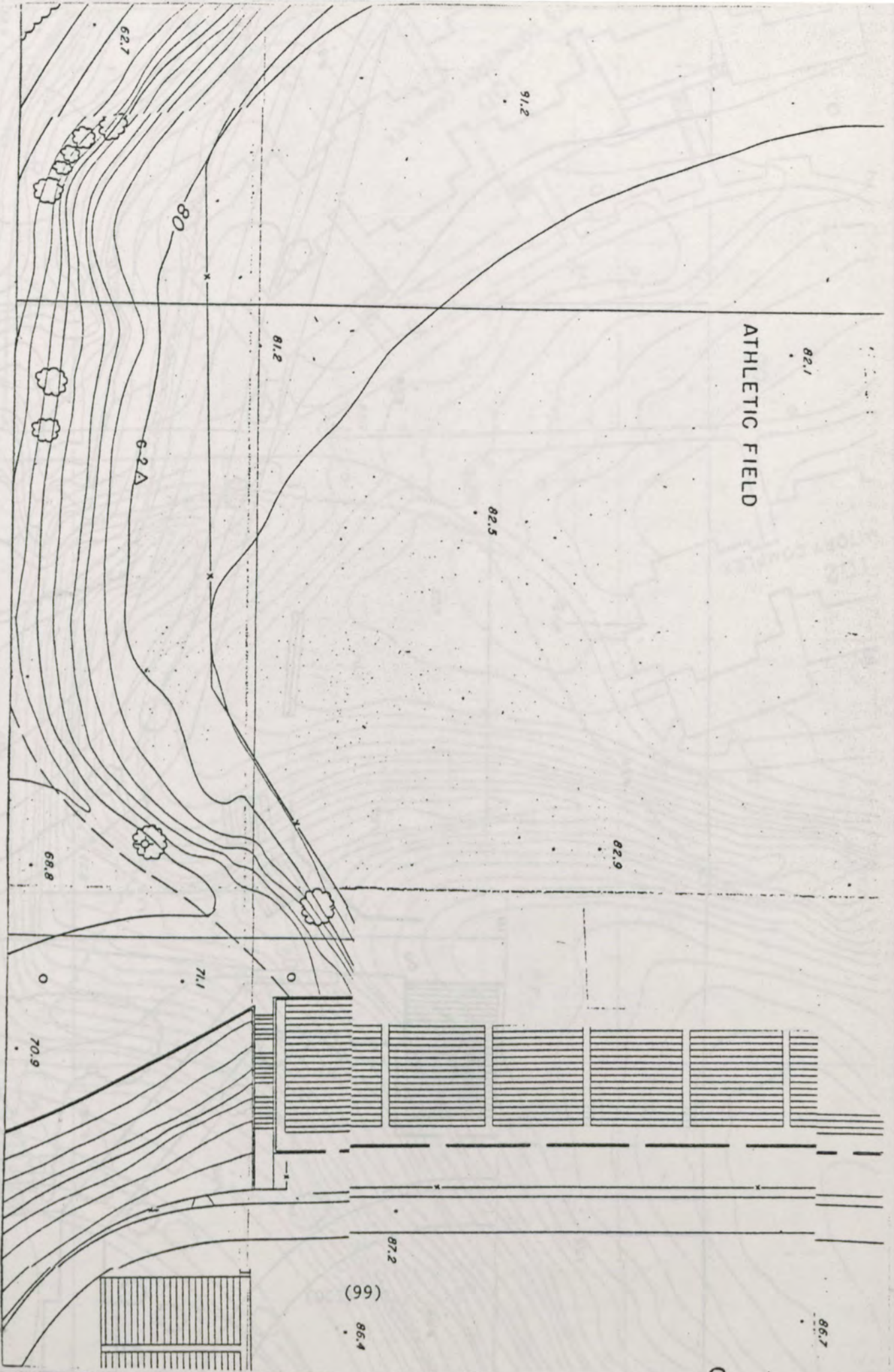
(97)



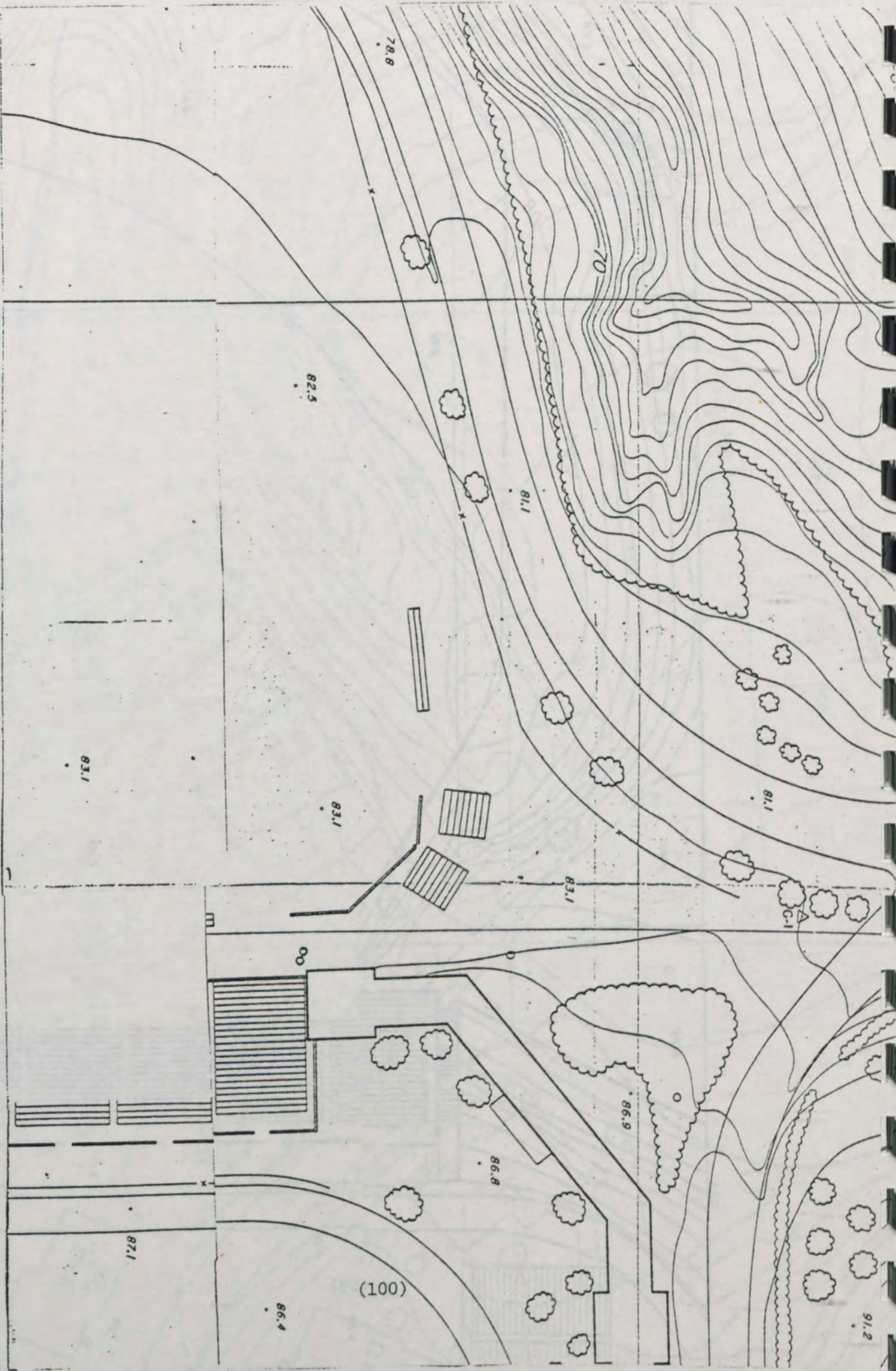




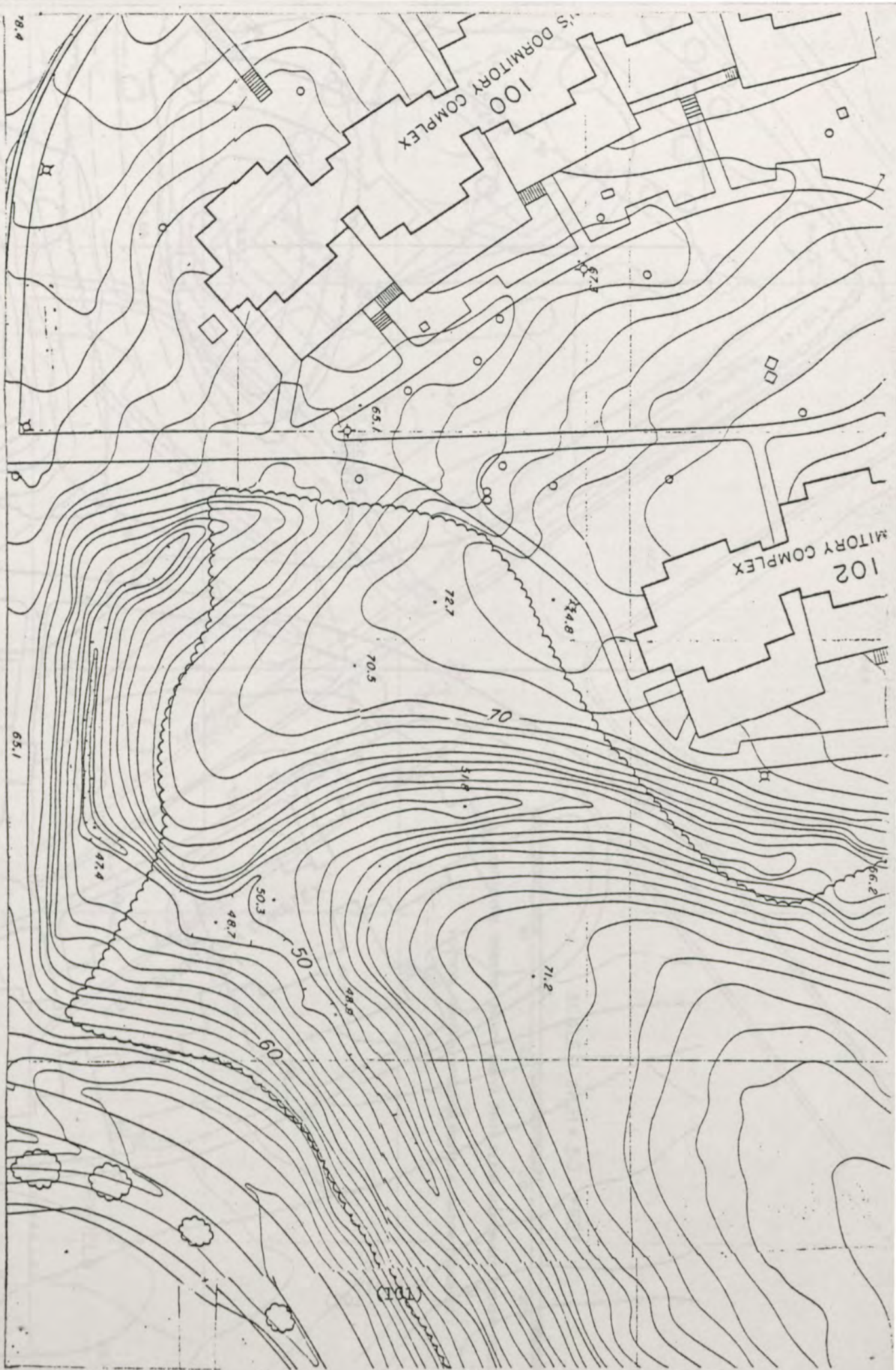
ATHLETIC FIELD



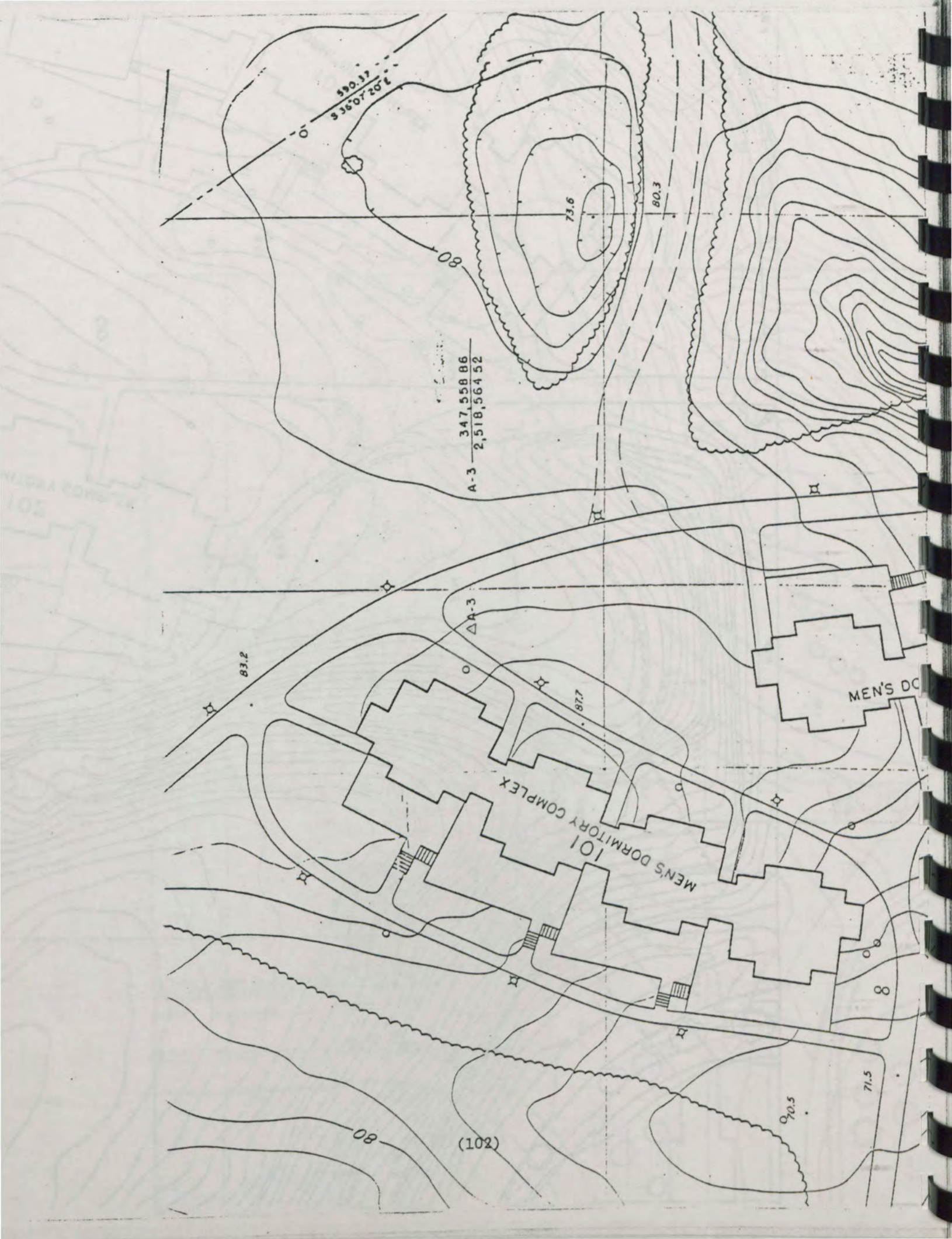




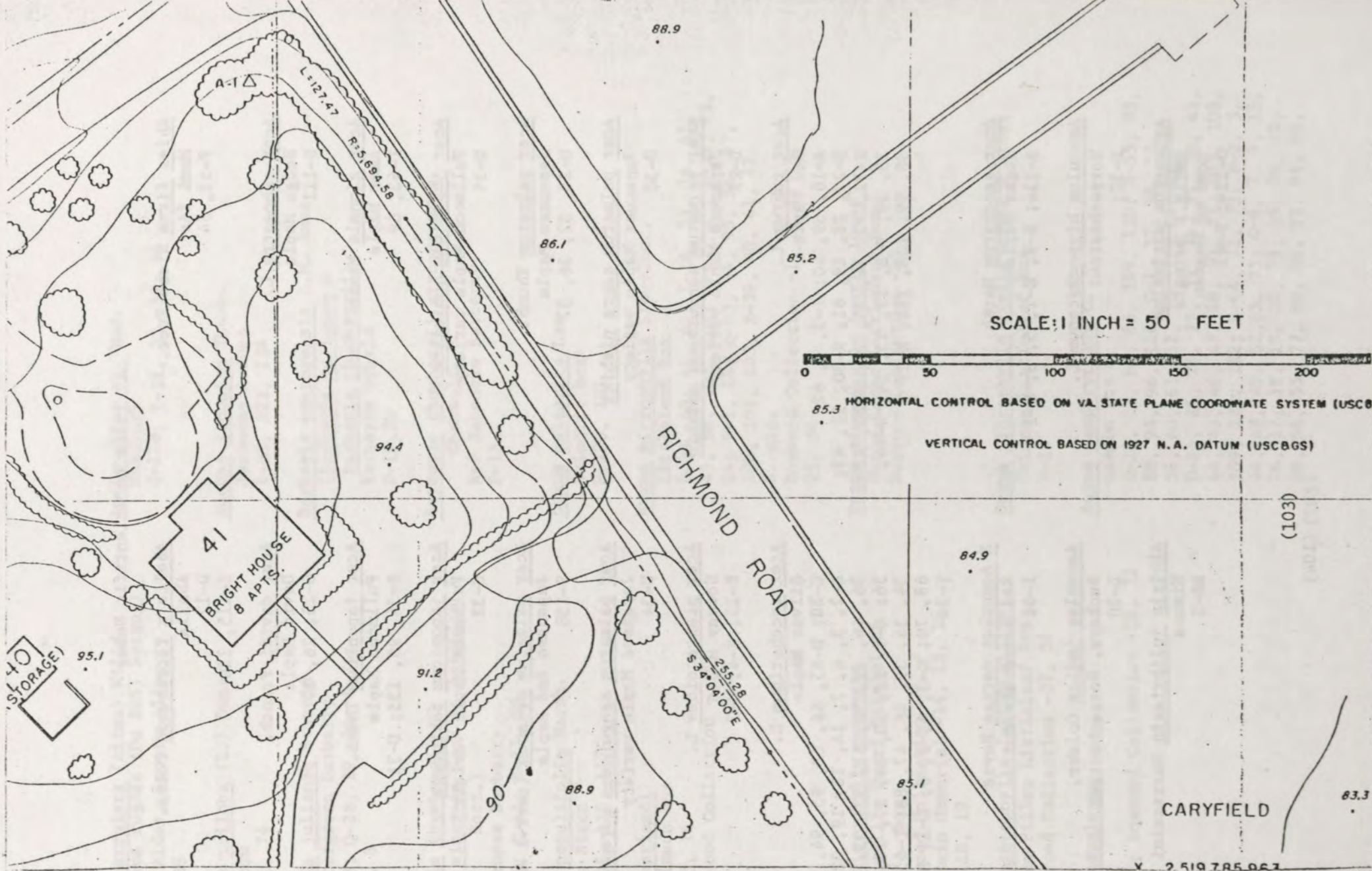




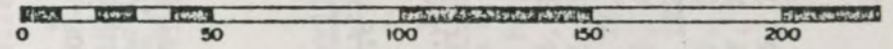








SCALE: 1 INCH = 50 FEET



HORIZONTAL CONTROL BASED ON VA. STATE PLANE COORDINATE SYSTEM (USC8)  
 VERTICAL CONTROL BASED ON 1927 N.A. DATUM (USC8GS)

X 2 519 785 967



Index to Scientific Names

- Abies firma Sieb & Zucc.  
Momi fir  
F-53, 54
- Acer campestre L.  
Hedge Maple  
S-111
- Acer ginnala Maxim  
Amur Maple  
I-63, 69
- Acer japonicum junihitoe  
Fullmoon Maple variety  
U-35
- Acer palmatum Thunb.  
Japanese Maple  
U-28, 32, 36, 37
- Acer palmatum sagra nishiki  
Japanese Maple variety  
U-30
- Acer palmatum sanguineum chishio  
Japanese Maple variety  
U-29
- Acer rubrum L.  
Red Maple  
A-16, 39, 40; I-3, 4, 62;  
N-27, 28, 29, 61; R-30, 31, 45;  
S-72, 73, 74, 75, 76; U-20, 22,  
23, 39; V-8, 12, 13, 14; W-44,  
88, 99, 108, 111; X-17
- Acer saccharum Marsh  
Sugar Maple  
A-114; B-9; E-1, 5, 8; H-1
- Aesculus hippocastanum L.  
Horsechestnut  
F-30;
- Ailanthus altissima  
(Mill.) Swingle  
Tree of Heaven  
D-124; F-43
- Abelia x floribunda Decne.  
Abelia  
D-12  
I-115, 120
- Acer davidi Franch.  
David Maple  
O-25, 26, 27
- Acer japonicum Thunb.  
Fullmoon Maple  
S-34, 95, 135; U-31
- Acer japonicum takingawa  
Fullmoon Maple variety  
U-33
- Acer palmatum ornatum (carr.) André  
Japanese Red Maple  
S-130
- Acer palmatum sanguineum aureum  
Japanese Maple variety  
U-34
- Acer plantanoides L.  
Norway Maple  
B-15; E-4; H-3
- Acer saccharinum L.  
Silver Maple  
C-88; D-65, 66, 68, 93, 94, 95;  
E-2, 3, 6, 7, 14, 18, 19, 32, 33,  
36, 46, 49, 50, 51, 52, 53, 55,  
56; G-5, 12, 13, 14, 27, 28, 33,  
34, 36, 37, 46, 47, 88; I-65, 67,  
68, 70; K-3, 4, 5, 6; L-1; M-1;  
Y-24
- X Aesculus carnea Hayne  
Red Horsechestnut  
I-66
- Aesculus indica Colebr.  
Buckeye, Horsechestnut  
L-20
- Albizia julibrissin Durrazzini  
Mimosa  
BB-5