

Alumni Gazette

Tercentenary Homecoming Supplement

May/June 1993



Photo by Tim Wright



William & Mary
Homecoming '93
October 20-24

How to Use This Publication

This publication includes everything you need to know to plan and register for Homecoming '93! Read it carefully. The following checklist will be helpful as you make plans:

- MARK AUGUST 1 ON YOUR CALENDAR!** THAT'S THE EARLY DEADLINE FOR REGISTERING. IF YOUR REGISTRATION IS POSTMARKED BY THEN, YOU WILL BE ELIGIBLE FOR A DRAWING FOR TWO FREE ROUNDTRIP USAir TICKETS TO EUROPE. THE FINAL DEADLINE IS SEPTEMBER 1.
- REVIEW THIS PUBLICATION. IT INCLUDES:**
 - ★ **General Information** — Details on tickets, parking, the Homecoming Tent at the Alumni House, and more. Page 2.
 - ★ **All-Alumni Events** — Activities, ranging from sporting events to the Tercentenary Ball to the Busch Gardens Birthday Party, which will interest all alumni. Most events require tickets or reservations even if there is no charge. Pages 6-7.
 - ★ **Reunion Events** — Reunion activities for the Classes of 1937, 1939, 1940 and 1941, 1948, 1953, 1956 and 1957, 1958, 1963, 1968, 1973, 1978, 1983 and 1988. Also detailed are reunion activities planned by the Alumni Band, Olde Guard, Young Guard, sororities, fraternities, other student organizations and alumni groups. Pages 3-5.
 - ★ **Academic Festival** — An exciting opportunity to hear noted professors, take special tours and get in touch with William and Mary's academic world of today. Pages 8-9.
 - ★ **Schedule of Events** — A listing, by day and time, of all Homecoming events. Use it to make sure you aren't two places at once! Pages 10-12.
 - ★ **Registration Form** — Sign up for those events you would like to attend. Mail it back by **August 1** to be eligible for two USAir tickets to Europe. Pages 13-14.
 - ★ **Make your hotel reservations.** Space has been reserved for non-reunion class alumni in the hotels listed. Page 15.
- DECIDE WHICH EVENTS YOU WOULD LIKE TO ATTEND.**
- COORDINATE WITH YOUR FRIENDS, IF YOU WANT TO BE TOGETHER FOR CERTAIN EVENTS, SUCH AS THE TERCENTENARY BALL OR GOLF AND TENNIS TOURNAMENTS. THE REGISTRATION FORM LEAVES SPACE FOR YOU TO INDICATE TABLE SEATINGS AND TOURNAMENT PARTNERS.**
- FILL OUT THE REGISTRATION FORM, USING THE PEEL-OFF LABEL ON THE BACK OF YOUR GAZETTE.**
- SEND IN YOUR REGISTRATION FORM AND PAYMENT BY AUGUST 1. THE FINAL REGISTRATION DEADLINE IS SEPTEMBER 1.**
- IF YOU HAVE QUESTIONS, CALL THE HOMECOMING HOTLINE AT 804/221-3111 FOR PRE-RECORDED INFORMATION ON HOMECOMING EVENTS.**
- COME BACK TO CAMPUS AND ENJOY THE HOMECOMING EXPERIENCE OF A LIFETIME!**



Dear Alumnus/Alumna:

Homecoming. The word itself evokes warmth, anticipation and secure feelings of familiar faces and places.

Homecoming '93 at William and Mary will be an unprecedented event as the entire College community salutes and celebrates our 300th anniversary. I invite you to be part of the excitement.

All the traditional activities — the parade, football game and class reunion parties — will be part of the fun but there's so much more this year. Beginning on Wednesday evening — a day earlier than usual for launching Homecoming — you can enjoy an energizing concert by the Preservation Hall Jazz Band. On Thursday and Friday, you're invited to revisit the classroom and reconnect with favorite professors during the Academic Festival. Then, dress up for an elegant evening at the Tercentenary Ball on Thursday. Corporate sponsorship of this memorable evening has been provided by Prudential Home Mortgage.

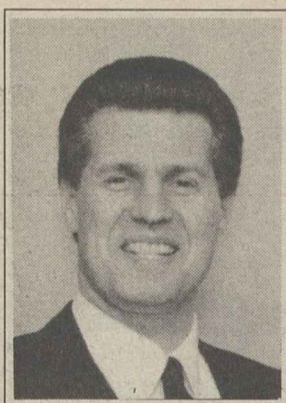
As the celebration progresses, sporting events, student group reunions and special exhibitions round out the literally hundreds of activities that will bring the campus to life in a way never before experienced.

The celebration will reach a crescendo on Saturday evening when Busch Gardens hosts a spectacular birthday party complete with fireworks, entertainment and birthday cake.

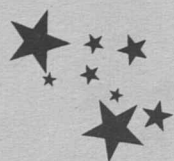
Because of the size and scope of Homecoming '93, it is very important that you register early. Many events, including the Busch Gardens Birthday Party, will be limited. Early registration will be your best way to avoid disappointment.

This publication produced by the Society of the Alumni, the sponsor of Homecoming, is your complete information and registration packet. Review it carefully and **mail your registration no later than August 1** to be eligible for a special drawing. Through the generosity of USAir, the Society is offering early registrants the chance to win two free roundtrip tickets to Europe! If you can't register by August 1, then the final deadline for registration is September 1.

This will be a Homecoming you won't want to miss! Please make your plans now. I'll see you there!



Joe
Joe Montgomery '74
President



General Information



Reservation Deadline

This publication is your registration information and form for all Homecoming events. In order for the Alumni Society to plan this weekend, your reservations must be prepaid. **August 1** is the early registrants' deadline with all reservations due no later than **September 1**.

You are strongly encouraged to register early to avoid disappointment. Most events have a limited number of tickets available. **Due to the large anticipated attendance no telephone registrations will be taken.** After the Alumni Society processes your registration, you will be mailed a confirmation.

A \$5 per form registration fee must be included with each form to partially cover administrative costs such as nametags, mailings, printing, handling and rental fees. Registrations postmarked after September 1 will be charged a \$10 per form late registration fee. In addition, registration forms postmarked after September 1 will be assessed an additional \$2 per ticket surcharge.

Register Early! Every registration form postmarked by August 1 will be eligible for an early registrants' drawing of two roundtrip airline tickets to Europe, courtesy of USAir. The lucky winner will be announced at the Busch Gardens Birthday Party on Saturday evening. Register early for this wonderful opportunity!

Homecoming HOTLINE

804/221-3111

For a pre-recorded message on Homecoming events, a special hotline has been installed at the Alumni House. Call 804/221-3111 for up-to-date information on ticket and hotel availability, football game tickets and all-alumni events. This line is available 24 hours a day with pre-recorded information, but personal assistance will only be available from 8 a.m.-5 p.m. EST, Monday-Friday.

USAir Discounts

USAir is offering the William and Mary family a 5 percent discount off the lowest applicable fare or 10 percent off the discount coach fare (Y8) when flying in to Richmond, Norfolk, or Newport News to attend Homecoming Weekend. Call 1-800/334-8644 for reservations or contact your local travel agent. You must request Gold File No.69330306 to receive the discount.



Alumni Society Homecoming Tent

Once you arrive on campus, stop by the Homecoming Tent on the Alumni House front lawn. Here you will find the center of all activity with up-to-date information about this exciting weekend. Stop by the tent to find:

- ★ Ticket pickup and sales
- ★ Complete up-to-date Homecoming Schedule
- ★ Class sign-up boards to find all your friends
- ★ Class directories — update your information or locate a lost classmate
- ★ Class buttons for sale — from Class of '16 to '93!
- ★ Alumni Gift Shop
- ★ Birthday Greetings from Alumni Chapters around the world
- ★ Campus Maps

HOMECOMING TENT HOURS: Wednesday noon-7 p.m.; Thursday 8 a.m.-6 p.m.; Friday 8 a.m.-6 p.m.; Saturday 8 a.m.-5 p.m.; Sunday 10 a.m.-1 p.m.



Homecoming 1989



Homecoming 1992

Ticket Pickup

Your tickets for prepaid Homecoming events will be available for pickup in the Homecoming Tent on the Alumni House front lawn. All tickets for events must be picked up at the ticket desk in the tent. The official Homecoming schedule will also be available.

Alumni Gift Shop

Don't miss the Alumni Gift Shop while you're in the Homecoming Tent on the front lawn of the Alumni House. From totebags to tumblers, the Gift Shop will serve all your W&M memorabilia needs. Here's where you can pick up the 300th anniversary commemorative print by artist P. Buckley Moss (if any are still available) or place a Christmas order for a William and Mary chair. This is also where you can purchase the best Homecoming T-shirt ever. And, we've made a number of improvements this year to make shopping even more pleasant and convenient. Hours same as Homecoming Tent.

Accommodations

If you are not celebrating a class reunion this year, please make room reservations through the Williamsburg Hotel/Motel Association at 1-800/446-9244. See page 15 of this publication for a listing of all hotels available through this tollfree number.

If you are a member of a reunion class, please refer to your specific hotel information under "Class Events" on page 5.

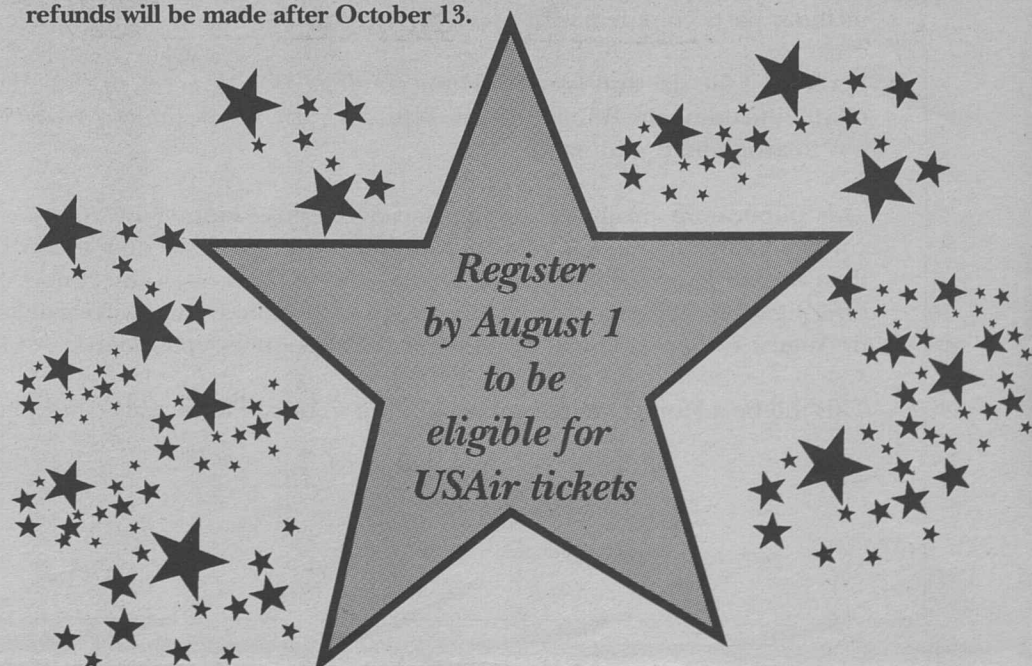
Parking/Transportation

Parking is available at William and Mary Hall for all events; however, you are encouraged to use the William and Mary shuttle service from your hotel whenever possible. Once on campus, get a complete Homecoming transportation schedule in the Homecoming Tent or from the concierge in your hotel. Service will run from all hotels hosting reunion class alumni.

The Alumni Society will not be able to honor Alumni House football parking passes during Homecoming Weekend.

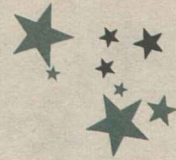
Cancellations

If you find it necessary to cancel your Homecoming plans, you may receive a full refund, less the \$5 registration fee, if you cancel on or before October 13. **No refunds will be made after October 13.**





Reunion Events



Alumni Band Reunion

All former members of the William and Mary Bands (Concert, Marching, Jazz) are invited to return for a "blow out" Tercentenary band reunion. Whether you're from the first Band class of 1929 and just want to carry the horn, are playing professionally, or anything in between, come help us cover the field with the biggest Alumni Band ever! The Band will participate in the 64th Annual Homecoming Parade and provide a special Tercentenary halftime show (no drill to learn). Music will be mailed to all registered participants. Music rehearsal for the halftime show is Friday 6:30-7:30 p.m. in the Campus Center Little Theatre. Field rehearsal (no drill involved) with the W&M Marching Band is at Zable Stadium immediately following the parade.

The Alumni Band Reunion Picnic is Saturday, 11 a.m.-1 p.m. on the Alumni House north lawn, and is \$8 for adults, \$4 for children under 12. All participants will be presented with a commemorative Tercentenary T-shirt to wear during the parade and the halftime show. (Please indicate size on the Registration Form on page 13; you will be able to pick up your T-shirt once on campus.) All participants except percussion and sousaphone must provide your own instrument and music lyre (percussionists must supply your own mallets and sticks). Please indicate the instrument that you will be playing on the Registration Form.

Register for all Alumni Band events on the Homecoming Registration Form in this publication. If you have questions, call Laura Rexroth, director of bands, at 804/221-1086 for further information on participating. Alumni Band Hotel Headquarters: Holiday Inn Express. Room reservations should be made by contacting the Hotel/Motel Association at 1-800/446-9244.

Remember to register early! All events will have limited availability, so don't be disappointed. Return your Registration Form postmarked by August 1 for the USAir drawing!

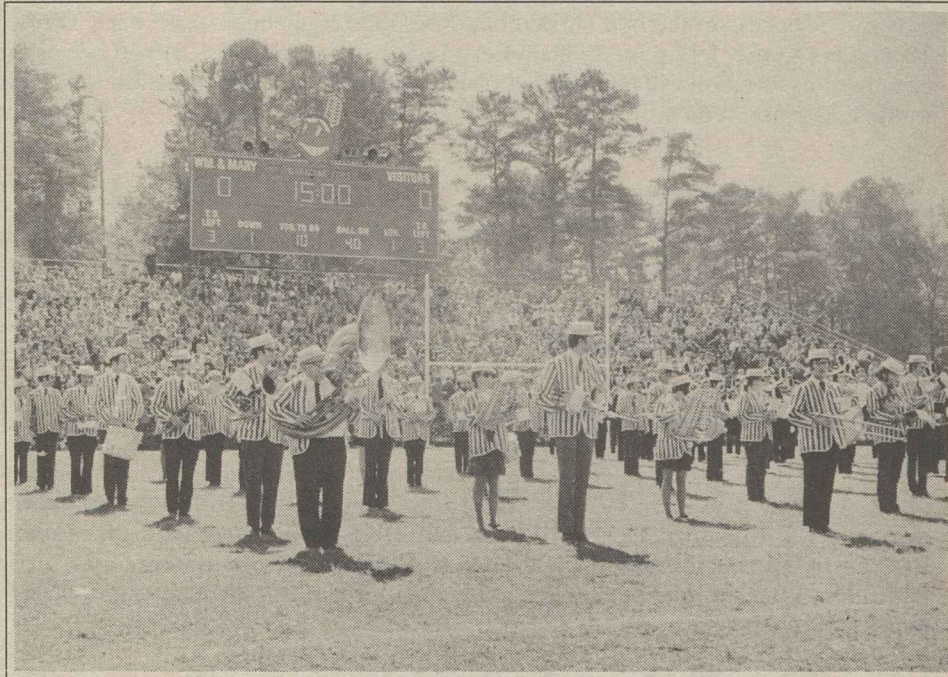


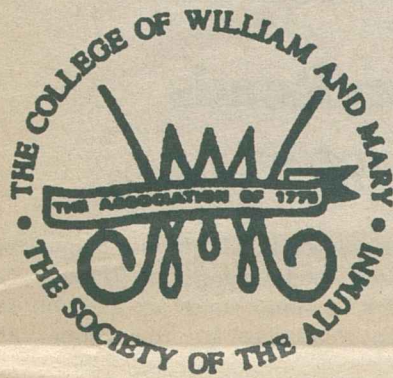
Photo courtesy of Thomas L. Williams

Homecoming 1973

Association of 1775

Mess Hall Breakfast, Saturday 7-9 a.m., in front of Sorority Court, \$5 per person. The Association of 1775 welcomes all alumni, students and faculty to join in the re-creation of the mess hall experience.

The association was chartered in 1991 to honor individuals who have served their country in uniform, and to develop and utilize the bonds of interest and affection between William and Mary alumni, students and faculty who have served or are currently serving the United States in one of the uniformed services.



Hulon Willis Association

Career Networking Workshop for Alumni and Students, Friday 2-5 p.m., Campus Center Atrium, no charge. (Please sign up under the "Academic Festival" listing on the Registration Form, using code F37.) Greek Step Show, Friday 7 p.m., William and Mary Hall, \$5 per person payable at door. Reception to follow. Hospitality Suite (cash bar), Friday 10 p.m.-midnight; Saturday 10 p.m.-midnight, Courtyard by Marriott. Brunch and Annual Meeting, Saturday 10:30 a.m.-1 p.m., Campus Center Atrium, \$13 per person. Hotel headquarters: Courtyard by Marriott (sold out). For additional hotel locations with H.W.A. members, contact Debbie Locke '77 at 804/485-4256.

Marshall-Wythe Law Alumni

Casino Night, sponsored by the Public Service Fund, Friday 8 p.m.-midnight, Law School Lobby, \$10 per person. Profits support law students in summer public interest positions. Pre-Game BBQ, Saturday 11 a.m.-1 p.m., Law School lawn, \$15 adults, \$7 children under 12. Class of 1968 Cocktail Party hosted by Frank Morton and Mark Dray, Friday 6:30 p.m., 117 Thomas Dale, Williamsburg. Class of 1973 Cocktail Party hosted by Dean and Mrs. Richard Williamson, Friday 6 p.m., 229 William Claiborne, Williamsburg. Class of 1973 Brunch hosted by Sam and Merle Powell, Sunday 1 p.m., 3200 Derby Lane, Williamsburg.

Class of 1978 Williamsburg Winery Wine Tasting, Friday 6 p.m., National Center for State Courts, \$12 per person. 1983 Cocktail Party (heavy hors d'oeuvres and open bar), Friday 6 p.m., Courtyard by Marriott, \$12 per person. Class of 1988 Reunion Party (heavy hors d'oeuvres and open bar) hosted by Bob Eveleigh, Brian Jackson, Gregg Paw and Mike Deneka, Friday 7-9:30 p.m., National Center for State Courts, \$10 per person.

Law School Football Tickets: a limited number of football tickets have been reserved for Law School Alumni. To purchase a ticket within the Law School Alumni block of seats, call the Athletic Department Ticket Office at 804/221-3340. The deadline for all block ticket sales is August 1. Class headquarters: Fort Magruder, Courtyard by Marriott and Williamsburg Hilton. Please note that this year, for the first time, all registration (except '68 and '73 reunions) will be handled by the Society of the Alumni. See the Registration Form on pages 13 and 14 of this publication.

M.B.A. Alumni

M.B.A. Business Panel/Reception, Friday 3-5 p.m., Williamsburg Lodge, speakers TBA. Top business managers will form a panel to address the question "Individual Initiative vs. Team Playing: Where's the Balance?" M.B.A. Alumni Association Annual Meeting, Friday 5-5:30 p.m., Williamsburg Lodge. Reunion Dinner/Reception for M.B.A. Classes of 1973, 1978, 1983 and 1988 and E.M.B.A. Classes of 1988 and 1991 (cash bar), Friday 7 p.m.; Dinner 7:30 p.m., Williamsburg Lodge, \$30 per person. M.B.A. Pre-Game Family Picnic, Saturday 11 a.m.-1 p.m., Blow Memorial Hall, lawn, \$10 adults, \$5 children 6-18, no charge children under 6. M.B.A. football tickets: a limited number of tickets to the football game have been reserved for M.B.A. alumni. To purchase a ticket within the M.B.A. block of seats, call the Athletic Department Ticket Office at 804/221-3340. The deadline for all block ticket sales is August 1. M.B.A. headquarters: The Williamsburg Woodlands. Room reservations should be made using the form provided in previous reunion mailings.

B.B.A. Alumni

B.B.A. Pre-Game Family Picnic, Saturday 11 a.m.-1 p.m., Blow Memorial Hall, lawn area, \$10 adults, \$5 children 6-18, no charge children under 6.



Photo courtesy of Thomas L. Williams

Homecoming 1966

Ex Libris Society Brunch

Swem Library will inaugurate the Ex Libris Society for all alumni who worked in any of the campus libraries as students, who became librarians after graduation, or who majored in library science at the College in the 1930s and 1940s. Brunch, Sunday 9-11 a.m., Swem Library, Botetourt Gallery, \$6 per person. For additional information, write or call Nancy H. Marshall, University Librarian, College of William and Mary, P.O. Box 8794, Williamsburg, VA 23187-8794; 804/221-3055; 804/221-3088 (fax).



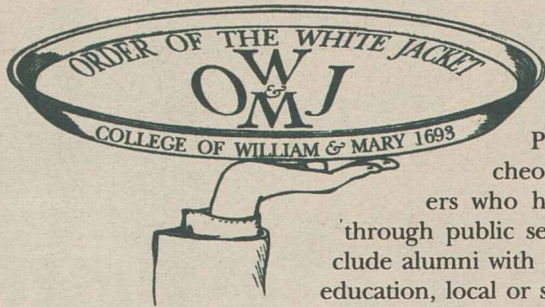
Reunion Events



Olde Guarde

Olde Guarde Reception/Luncheon with performance by the Botetourt Singers of the William and Mary Choir and a presentation by David Lutzer, dean of the Faculty of Arts and Sciences, on the new curriculum. Reception/Luncheon (cash bar), Thursday 12:30 p.m.; Lunch 1:15 p.m., Williamsburg Lodge, Virginia Room, \$13.50 per person. Shuttle transportation will be provided from the James Blair Statue dedication at noon to the Lodge and return.

OWJ



The Order of the White Jacket invites all alumni, students and faculty to join in the OWJ and Virginia Power-sponsored Tercentenary luncheon honoring distinguished alumni leaders who have made significant contributions through public service. Those to be honored will include alumni with distinguished careers in the fields of education, local or state government, environmental services or those who have made significant contributions

through civic volunteer activities. Please join OWJ as we celebrate a time-honored tradition at W&M of utilizing our education and experience in providing public service. Reception/Luncheon, Friday noon, Luncheon 12:30 p.m., William and Mary Hall, \$18 per person (cash bar).

School of Education

The School of Education invites all alumni and their families, students and faculty to a first-time event — The School of Education Symposium and Family Picnic. Symposium, "So You Chose to be an Educator," Saturday 9 a.m., Millington 150. Picnic, Saturday 11:30 a.m., Jones Hall, north lawn, \$10 per adult, \$5 children 6-18, no charge children under 6. (Rain plan - picnic will be held in the Dodge Room of Phi Beta Kappa Hall.) For family members attending the picnic but not interested in the symposium, be sure to catch the annual parade beginning at 9:30 a.m. on Richmond Road or take in the sights of Williamsburg. School of Education Football Tickets: a limited number of football tickets have been reserved for School of Education Alumni. To purchase a ticket within the School of Education Alumni block of seats, call the Athletic Department Ticket Office at 804/221-3340. The deadline for all block ticket sales is August 1. Please note that this year, for the first time, all registration will be handled by the Society of the Alumni. See the Registration Form on pages 13 and 14 of this publication. For more information call Kris Thornton at the Society of the Alumni, 804/221-1204.

Student Group Reunions

- ★ **Alpha Chi Omega** Reception, Saturday 10:30 a.m.-12:30 p.m., Alpha Chi Omega House.
- ★ **Alpha Phi Omega** Reception, Saturday 10:30 a.m.-12:30 p.m., Place TBA.
- ★ **Kappa Alpha** invites all Alpha Zeta alumni to be part of their Homecoming Parade entry: "300 KAs for 300 Years." Reception, Saturday pre-game, Kappa Alpha House. The recipient of the Frank Shields Award will be announced at this time. Open house (food and beverages), Saturday post-game, Kappa Alpha House. For more information call Craig Birgfeld 804/221-5986 or Tim Kelly 804/221-5987.
- ★ **Lambda Chi Alpha** Reception, Friday 5:30 p.m., Lambda Chi Alpha House. Lambda Chi Party, Saturday Post-Busch Gardens 300th Birthday Party, Lambda Chi Alpha House.
- ★ **Pi Kappa Alpha** Happy Hour (BYOB), Friday 5-7 p.m., Pi Kappa Alpha House. Breakfast, Saturday pre-game, Pi Kappa Alpha House. Reception (hamburgers, hot dogs, soda, BYOB), Saturday post-game, Pi Kappa Alpha House. Formal, Saturday evening, Place TBA.
- ★ **Theta Delta Chi** Bourbon Club, Thursday 9 p.m., Theta Delta Chi House, Epsilon Charge Room, semi-formal. Cocktail Reception, Friday 9 p.m., Theta Delta Chi House, semi-formal. Bloody Breakfast, Saturday 10:30 a.m., Theta Delta Chi House, Porch. Band Party, Saturday Post-Busch Gardens 300th Birthday Party, Theta Delta Chi House. Epsilon Association Annual Business Meeting, Sunday 11 a.m., Theta Delta Chi House.
- ★ **Tri Delta** Reception, Saturday 11 a.m., Tri Delta House.
- ★ **Intervarsity Christian Fellowship** Meeting/Reception, Friday 8:30-10:30 p.m., Millington 150. Reception to celebrate the 30th anniversary of the chapter's charter. Brunch, Saturday 11 a.m., Williamsburg Community Chapel, cost TBA.
- ★ **Asian Student Union** Reception, Saturday 11 a.m.-1 p.m., Campus Center, Room E. Questions, comments and responses should be directed to the Office of Multicultural Affairs at 804/221-2300.
- ★ **Jewish Student Group** Brunch hosted by the Balfour-Hillel Jewish Student Group, Sunday 12:30 p.m., Temple Beth El (across from Phi Beta Kappa Hall).
- ★ **Christopher Wren Singers** Concert, Saturday 11 a.m., Reception following, Crim Dell.
- ★ **Kinesiology** (Physical Education) Majors Reunion, Friday, time TBA, Adair.
- ★ **Student Association Alumni** Second Annual Reception, Saturday 11 a.m.-1 p.m., Location TBA.
- ★ **William and Mary Club** Ultimate Frisbee Game, Sunday 2 p.m., Barksdale Field. For more information call Michael Amendola 804/221-4005.

William and Mary GALA

William and Mary Gay and Lesbian Alumni/ae Weekend Hospitality Suite (BYOB) Thursday 5 p.m.; Friday 8 a.m. and 5 p.m.; Saturday 8 a.m. and 5 p.m.; Sunday 8 a.m., Williamsburg Center, Penthouse Suite. Reception and Awards Dinner (cash bar), Friday 7 p.m.; Dinner 8 p.m., followed by William and Mary GALA's Awards Ceremony culminating in the presentation of the first William and Mary GALA Board of Directors' Cup for Outstanding Professional Achievement to guest speaker, author and novelist, Christopher Bram '74, Phi Beta Kappa Hall, Dodge Room, \$30 per person. 8th Annual Homecoming Reception (open bar), Friday 10 p.m., Williamsburg Center, Atrium. 8th Annual Buffet Brunch, Sunday 10 a.m.-12:30 p.m., Williamsburg Center, Penthouse Suite, \$12.50 per person. Class headquarters: Williamsburg Center. Advance registration required. Write William and Mary GALA, P.O. Box 15141, Washington, DC 20003, or call 202/362-9158.

Young Guarde

(Classes of 1989-1993 and Senior Class)

Young Guarde Party (all you can eat and drink), Saturday 10:30 a.m.-1 p.m., Alumni House, south lawn, \$5 per person. (Rain location—Campus Center Ballroom.) Special reunion of The Flannel Animals. Everyone registering by September 1 for this party will be eligible to win a Motorola porta-pack cellular phone, courtesy of Contel Cellular of Virginia. Register by August 1 and you may win two USAir tickets to Europe.

South Hampton Roads Alumni Chapter

Join members and friends from Virginia's South Hampton Roads Alumni Chapter for a Homecoming reception at the chapter's designated hotel, Quality Suites Hotel, 152 Kingsgate Road off Bypass Road. Friday 7 p.m.-1 a.m. (Four suites are available to members in the chapter's room block from Thursday to Sunday.) For information, call 804/855-2385.



Athletic Events and Reunions

- SWIMMING:** Men's and Women's Green vs. Gold Swimming Meet, Friday 4 p.m., Adair Pool. Picnic/Cookout, Friday following swim meet. For more information call Anne Anderson, 804/221-3393.
- BASEBALL:** Saturday pre-game tailgate, Baseball Field. Baseball Alumni Game, Sunday 11 a.m., followed by Baseball Alumni Picnic, Sunday noon, Baseball Field. For more information call Jim Farr, 804/221-3399.
- FIELD HOCKEY AND LACROSSE:** Field Hockey and Lacrosse Reception, Saturday 5-7 p.m., place TBA. Hockey Alumni Game, Saturday 11 a.m., Busch Field. Lacrosse, Sunday noon, Barksdale Field. For more information call Peel Hawthorne, 804/221-3390, or Feffie Barnhill, 804/221-3389.
- TENNIS:** Women's Tennis, Alumnae vs. Varsity, Saturday 4:30 p.m., Adair Courts. For more information call Brian Kalbas, 804/221-3384.
- CHEERLEADERS:** Cheerleaders tailgate, Saturday pre-game, Baseball Field. During the game all alumni cheerleaders are invited on the field to help the squad cheer the Tribe.
- TRACK:** Men's and Women's Track and Cross Country Bonfire, Saturday 8 p.m., Berryhill's Farm. For more information call Dan Stimson, 804/221-3397, Pat VanRossum, 804/221-3396, or Walt Drenth, 804/221-3398.
- VOLLEYBALL:** Women's Volleyball, W&M vs. Virginia Tech, Saturday 5 p.m., Adair Gym or W&M Hall. Alumnae Triples Tournament, Sunday noon, Adair Gym. For more information call Debbie Hill, 804/221-3395.
- SOCCER:** Men's Alumni Soccer Game, Sunday 11 a.m., Dillard Field. For more information call Al Albert, 804/221-3385.
- SOCCER:** Women's Soccer, W&M vs. Virginia Tech, Saturday 11 a.m., Barksdale Field. Tailgate, Saturday post-soccer game. For more information call John Daly, 804/221-3387.

The Society of the Alumni does not provide financial support nor does it represent independent alumni groups. Publication of information about activities and events sponsored by these groups is provided as a courtesy upon request and does not imply endorsement or responsibility.



Class Events



Class of 1937

Hospitality Suite (BYOL), Thursday 5-7 p.m.; Friday 3 p.m.-til; Saturday 10 p.m.-til, Heritage Inn, Dining Room/Patio, \$10 per person. Class headquarters (sold out): Heritage Inn. Please contact the Williamsburg Hotel/Motel Association at 1-800/446-9244 and select an alternate hotel.

Class of 1939

Hospitality Suite (BYOL), Thursday 5-7:30 p.m.; Friday 3-6:30 p.m.; Saturday 7 a.m.-game time, post-game-6 p.m.; Sunday 7 a.m.-noon, The Woodlands, Rooms 5074 & 5075, \$16 per person. Dinner with performance by the Gentleman of the College, Friday 7 p.m., Cascades, \$36 per person. Class headquarters: The Woodlands. Room reservations should be made directly with the hotel using the forms provided in previous class mailings.

Classes of 1940 and 1941

Cocktail Party hosted by Ed and Dinny Wetter, Thursday 6-8 p.m. Class table seating at the Tercentenary Ball will follow the cocktail party at Ed and Dinny Wetter's. Cocktail Party hosted by Herb and Jane Young, Friday 6-8 p.m. Directions to the Wetters and Youngs will be available in the Homecoming Tent. Dinner, Friday 8 p.m., Williamsburg Hospitality House, Gloucester Dining Room, \$35 per person. Football tickets: to purchase a ticket within the Class of '40 block of seats, call the Athletic Department Ticket Office at 804/221-3340.

Class of 1948

Cocktail Party, hosted by the Friends of the Library, Thursday 5:30-6:30 p.m., Swem Library, Botetourt Gallery. Bus transportation to and from reception will be provided from the Williamsburg Lodge. Gathering/Supper (cash bar), Thursday 6:45-7:45 p.m.; Supper 8-10 p.m., Fords Colony on Long Hill Road, \$25 per person. Reception (cash bar), Friday 6:45-7:45 p.m., Williamsburg Lodge, East Gallery. Dinner, Friday 8-10 p.m., Williamsburg Lodge, Virginia Room, \$48 per person. Luncheon-on-the-Lawn under special '48 banner, Saturday 11 a.m.-1 p.m., Sunken Garden, \$8 adults, \$4 children. Class photo, Saturday 11:15 a.m., Sunken Garden, \$12. Class headquarters: Williamsburg Lodge. Room reservations should be made directly with the hotel using the forms provided in previous class mailings.

Class of 1953

Hospitality Suite (BYOL)/Continental Breakfast, Thursday 5-7 p.m.; Friday 8-9:30 a.m.; Saturday 9 p.m.-til, Williamsburg Hospitality House, Suite 320, \$15 per person. Continental Breakfast (with view of the Parade), Saturday 9-10:30 a.m., Blow Memorial Hall, Board Room. Continental Breakfast hosted by Jim '51 and Bev Kelly, Sunday 9-10:30 a.m., at the Kellys' home, (directions will be provided in the Homecoming Tent). Cocktail Party hosted by the Muscarelle Museum, Friday 6-7 p.m., Muscarelle Museum. Bus transportation will be provided to and from the Muscarelle Museum. Dinner/Dance (cash bar), Friday 7:30-11 p.m., Hospitality House, Empire Dining Room, \$35 per person. Luncheon-on-the-Lawn, Saturday 11 a.m.-1 p.m., Sunken Garden, \$8 adults, \$4 children. Class photo, Saturday 11:25 a.m., Sunken Garden, \$12. Class headquarters (sold out): Hospitality House. Please contact the Williamsburg Hotel/Motel Association at 1-800/446-9244 and select an alternate hotel.

Classes of 1956 and 1957

Hospitality Suite, Friday time TBA, Ramada Inn. Brunch, Sunday, time TBA, Ramada Inn. Both events \$10 per person. Payment should go to Jim and Jane Kaplan, 35 Alpine Drive, Wayne, NJ 07470. Class headquarters: Ramada Inn Historic Area. Please contact the Williamsburg Hotel/Motel Association at 1-800/446-9244 to make your reservations.

Class of 1958

Continental Breakfast, Friday 8-10 a.m.; Sunday 8-10 a.m., Williamsburg Hospitality House, Room TBA, \$12 per person. Hospitality Suite, Thursday 7 p.m.-midnight (BYOL); Friday 4-6 p.m. (BYOL); Saturday 4-6 p.m. (BYOL), 10 p.m.-midnight (cash bar), Williamsburg Hospitality House, Room TBA, \$11 per person. Cocktail/Buffer & Dancing (cash bar), Friday 7 p.m.-midnight, Williamsburg Hospitality House, Westminster Room, \$45 per person. Luncheon-on-the-Lawn under special '58 banner, Saturday 11 a.m.-1 p.m., Sunken Garden, \$8 adults, \$4 children. Class photo, Saturday 11:35 a.m., Sunken Garden, \$12 per person. Class headquarters (sold out): Williamsburg Hospitality House. Please contact the Williamsburg Hotel/Motel Association at 1-800/446-9244 and select an alternate hotel.

Class of 1963

Hospitality Suite (cash bar), Thursday 11 p.m.-1 a.m.; Friday 10 p.m.-midnight, Holiday Inn 1776, Room TBA. Breakfast Buffet, Sunday 9-11 a.m., Holiday Inn 1776, Spencer's Annex, pay at the door. Cocktail Party (cash bar), Friday 6-7 p.m.; Buffet Dinner, Friday 7-10 p.m., Holiday Inn 1776, Middle Plantation Room, \$30 per person. Luncheon-on-the-Lawn under special '63 banner, Saturday 11 a.m.-1 p.m., Sunken Garden, \$8 adults, \$4 children. Class photo, Saturday 11:45 a.m., Sunken Garden, \$12. Class headquarters: Holiday Inn 1776. Room reservations should be made directly with the hotel using the forms provided in previous class mailings.

Class of 1968

25th Reunion Celebration. Hospitality Suite with beer, wine, munchies and continental breakfast, Wednesday 8 p.m.-midnight; Thursday 4 p.m.-midnight; Friday 8 a.m.-noon, 3-6 p.m.; Saturday 4-6 p.m.; Sunday 8-11 a.m., The Williamsburg Hospitality House, Governor's Suite 422 and Room 420, \$15 per person for unlimited use. Cheese Shop Lunch, Friday 12:45 p.m., Phi Beta Kappa Hall, Dodge Room, \$6 per person. The "Big Chill" Colloquy, Friday 2-4 p.m., discussion with classmates about Vietnam, the gender revolution and race relations, featuring Pulitzer prize-winner Lew Puller '67 J.D., Room TBA. Cocktail Party, Friday 6:30-7:45 p.m., The Great Hall, Dinner/Dance (cash bar), Friday, 8 p.m.-1 a.m., Trinkle Hall, \$55 per person. Dinner followed by Program and Class Gift Presentation, Dance (cash bar) with music by the Waller Family Band. President's Continental Breakfast, Saturday 8-9:30 a.m., Wren Yard. Look for Class of '68 sign. Luncheon-on-the-Lawn under special '68 banner, Saturday 11 a.m.-1 p.m., Sunken Garden, \$8 adults, \$4 children. Class photo, Saturday 11:55 a.m., Sunken Garden, \$12. Class headquarters (sold out): Williamsburg Hospitality House. Please contact the Williamsburg Hotel/Motel Association at 1-800/446-9244 and select an alternate hotel.

Class of 1973

Hospitality Suite (with beer, wine and mixers), Friday 6-8 p.m.; Saturday 6 p.m.-midnight, Fort Magruder Inn, Room TBA, \$5 per person. Class Party/Dance (D.J., hors d'oeuvres, cash bar), Friday 8 p.m.-midnight, Campus Center Ballroom, \$12.50 per person. Parade, Saturday 9:30 a.m., meet class members in front of Wythe Candy in Merchant's Luncheon-on-the-Lawn, Saturday 11 a.m.-1 p.m., Sunken Garden, \$8 adults, \$4 children. Class photo, Saturday 12:05 p.m., Sunken Garden, \$12. Class headquarters (sold out): Fort Magruder Inn. Please contact the Williamsburg Hotel/Motel Association at 1-800/446-9244 and select an alternate hotel.

Class of 1978

Hospitality Suite (cash bar), Thursday 7-10 p.m.; Friday, 6-8 p.m., Fort Magruder, Room TBA. Coffee Service, Saturday 7-9 a.m.; Sunday 8-10 a.m., Fort Magruder, Room TBA. Class Night (cash bar), Friday 8 p.m.-midnight, Fort Magruder Inn, Petersburg Room, \$15 per person. Luncheon-on-the-Lawn under special '78 banner, Saturday 11 a.m.-1 p.m., Sunken Garden, \$8 adults, \$4 children. Class Photo, Saturday 12:15 p.m., Sunken Garden, \$12. Class headquarters (sold out): Fort Magruder Inn. Please contact the Williamsburg Hotel/Motel Association at 1-800/446-9244 and select an alternate hotel.

Class of 1983

Class Party (cash bar), Friday 8 p.m.-1:30 a.m., Holiday Inn Downtown, Holidome, \$16.93 per person. Luncheon-on-the-Lawn under special '83 banner, Saturday 11 a.m.-1 p.m., Sunken Garden, \$8 adults, \$4 children. Class Photo, Saturday 12:25 p.m., Sunken Garden, \$12. Class headquarters (sold out): Holiday Inn Downtown. Back up hotel: Hojo Inn. Call the Williamsburg Hotel/Motel Association at 1-800/446-9244 for a reservation at a rate of \$55.

Class of 1988

Class Party/Dance, Friday 8:30 p.m.-12:30 a.m., Williamsburg Hospitality House, Williamsburg and Berkeley Ballroom, \$15 per person. Luncheon-on-the-Lawn, under special '88 banner, Saturday 11 a.m.-1 p.m., Sunken Garden, \$8 adults, \$4 children. Class Photo, Saturday 12:35 p.m., Sunken Garden, \$12. Class headquarters (sold out): Quality Suites. Back up hotel: Holiday Inn Express. Use the hotel registration form provided in the most recent class letter to make your reservation.

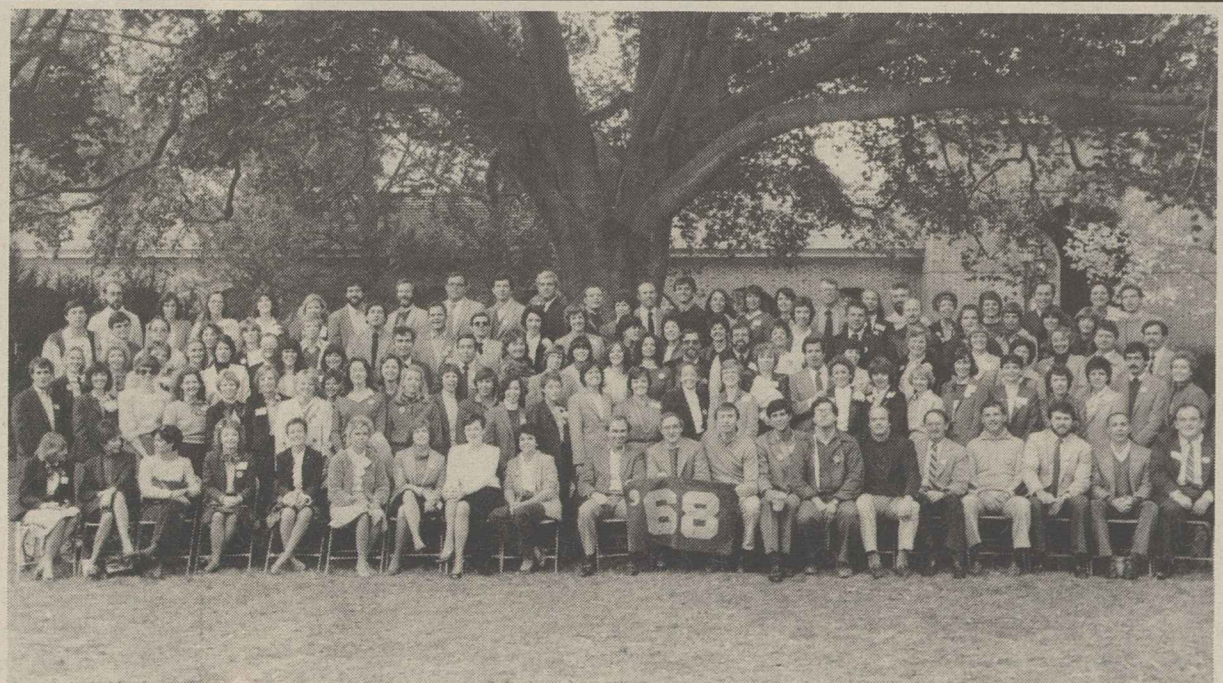


Photo courtesy of Thomas L. Williams

Homecoming 1983

Class Photographs

Photographs of all reunion classes will be taken Saturday during Luncheon-on-the-Lawn in the Sunken Garden. (See Schedule of Events for times.) The 8" x 12" color photographs cost \$12 each, including postage and handling, and will be shipped to alumni after Homecoming weekend. Advance orders are encouraged. See Registration Form, Section V.



All Alumni Events



Academic Festival

Join faculty members for sessions on a variety of topics. Special tours also are planned. For complete details, see pages 8-9.

Alumni Children Admission Interviews

Interviews available by appointment only. Contact Admission Office, Blow Memorial Hall, 804/221-4223, in advance. Interviews conducted Friday 8 a.m.-4 p.m.

Busch Gardens Birthday Party



Come celebrate William and Mary's 300th anniversary with members of the entire college community! Thanks to the generosity of Busch Gardens Williamsburg and Anheuser-Busch Inc., St. Louis, this grand occasion will cap off the biggest Homecoming ever. Entertainment, rides, birthday cake and fireworks will all be part of the fun. In addition to park admission, your ticket will include a voucher redeemable at one of the fine restaurants in the park.

Saturday, 7-11 p.m. Cake cutting set for 8:30 p.m. in the Royal Palace Theatre, fireworks at 9:30 p.m.

The party is free to members of the William and Mary community, with a limit of two tickets per alumni household. Reservations will be made on a first-come, first-served basis. *The absolute final deadline for reserving tickets is September 1, and it is possible that tickets will run out before then. To avoid disappointment, register early! If your Registration Form is postmarked by August 1, you will be eligible for the drawing for two free roundtrip USAir tickets to Europe.*

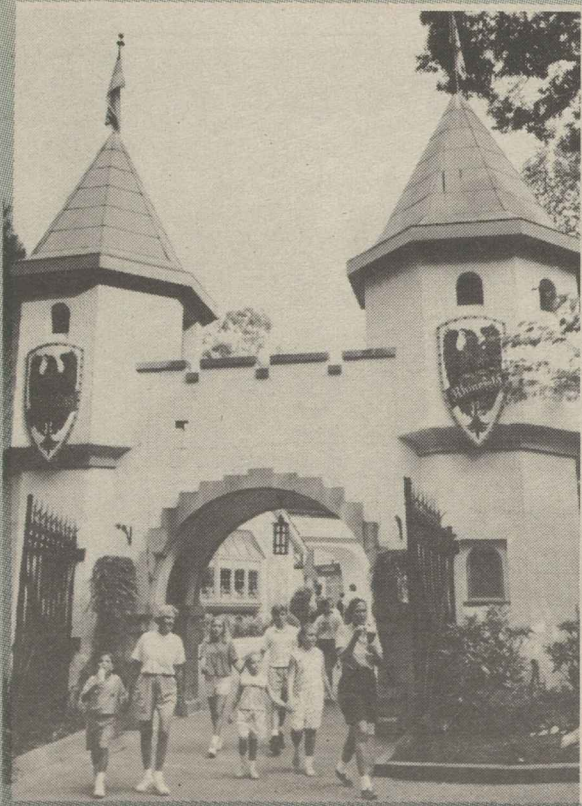
To make reservations, complete and return the Registration Form on page 13.

Additional Details

Tickets are limited to two (2) per alumni household. Even if you and your spouse are both alumni, you are only eligible for a total of two tickets.

This is a free event hosted by Busch Gardens Williamsburg and sponsored by Anheuser-Busch Inc., St. Louis, Mo. Additional tickets cannot be purchased for the Birthday Party from 7-11 p.m. Season's passes also will not be honored during the party.

If you would like to enjoy the park with your entire family, next-day tickets, good for Sunday, October 24, may be purchased for \$8.95 each at the park.



Next-day tickets are limited to one per William and Mary ticketholder and they are non-transferable.

The park opens to the public at 10 a.m. on Saturday. Any William and Mary ticketholders may enter the park free of charge by showing the special Tercentenary celebration ticket. No tickets will be held at the front gate.

Parking is limited, and you are encouraged to carpool with friends. Shuttle buses will run between numerous hotels and Busch Gardens for ticketed passengers only. Transportation schedules will be available in the Homecoming Tent.

Choir Concerts

A special performance by the William and Mary Choir preceding the Sunset Ceremony, Friday 3:30 p.m., Wren Chapel. Reserve your space by returning the Registration Form on page 13 of this publication. Performance by the Botetourt Singers, Friday 8:30 p.m., Wren Chapel, no ticket required.

College Admission Seminar

If you have children or grandchildren thinking about college, come learn more about the admission process and how to plan for the future. Seminar led by Virginia Carey '71, acting dean of admission, Friday 4 p.m., Blow Memorial Hall, Admission Lobby. Reserve your space by returning the Registration Form in this publication.

Football Game

Cheer on the Tribe as they play the Villanova Wild Cats. Pre-game activities include the presentation of the '93 Homecoming Court. The special halftime show will feature the Alumni Band, the William and Mary Marching Band, the Tribal Dancers and a special birthday salute to the College. Saturday 1 p.m., Zable Stadium. Please note: Football tickets must be ordered directly from the athletic ticket office. Costs: Sideline-\$18; End Zone-\$10. Please add \$2 to your total order for postage and handling. Checks must be made payable to WMAA. Mail to: Athletic Office, P.O. Box 399, Williamsburg, VA 23187-0399. For further information, please call the athletic ticket office at 804/221-3340.

Golf Tournament co-sponsored by *The Daily Press*

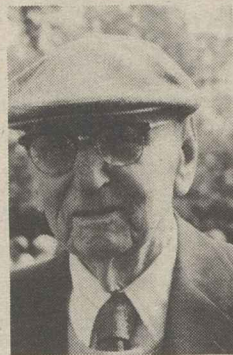
The annual Golf Tournament will be held for two days this year, Thursday, October 21, and Friday, October 22. On Thursday, the tournament will be held at Ford's Colony, 240 Ford's Colony Drive. This golf course is listed as one of the five most popular courses in Virginia by *Golfweek Magazine* and winds through 2,500 acres of rolling countryside at Ford's Colony, recently named one of the best recreational and residential private communities in America. The 36-hole championship course, designed by Dan Maples, will be joined by an additional 18 holes in the near future to make this community one of the top golf resorts in the East.

On Friday, the Governor's Land at Two Rivers will for the second year host the tournament on the new Two Rivers Country Club course. Returning by the popular demand of our golfing alumni, you are invited to experience this course, designed by Tom Fazio, which features dramatic river footage along the James and Chickahominy rivers for the last three holes.

Both tournaments will feature prizes including two roundtrip airline tickets to anywhere in the Continental United States on USAir for the first hole in one and for closest to the pin. Both will be played CAPTAIN'S CHOICE, shotgun start, Thursday 10 a.m.; Friday 10 a.m., \$75 per person includes continental breakfast, greens fees, cart, post-tournament reception and a William and Mary golf towel. Breakfast and check-in, 9 a.m. Save \$10 if you attend both days: \$140 per person to play on both Thursday and Friday.

Homecoming Parade

The 64th Annual Homecoming Parade will celebrate "Three Hundred Years of William and Mary History" with three very special Grand Marshals: E. Ralph James '16, the College's most senior alumnus; Catherine Teackle Dennis '21, the College's most senior alumna, and Rolfe E. Kennard '24, who has attended 69 consecutive Homecomings. The parade follows its traditional route, beginning at the Capitol, continuing up Duke of Gloucester Street and ending at Zable Stadium, Saturday 9:30 a.m.



E. Ralph James '16



Catherine Teackle Dennis '21



Rolfe E. Kennard '24

Homecoming Run

Second annual 5K run sponsored by the Williamsburg Alumni Chapter and the *Richmond Times-Dispatch*, Saturday 8 a.m., beginning and ending at William and Mary Hall, \$12.50 per person. The race is for seasoned and amateur runners and walkers alike. Entrance fee includes a T-shirt, refreshments and door prizes. Participants should arrive by 7:30 a.m.

Luncheon-on-the-Lawn

Moved to the Sunken Garden for this special 300th birthday Homecoming, the annual Luncheon-on-the-Lawn is scheduled before the football game. This gourmet lunch will feature your choice of Beef Bourguignon or Chicken Primavera as entrees. Class photographs will be taken (see Schedule of Events for exact times). Handicapped accessible. Call Homecoming Hotline for directions. Saturday 11 a.m.-1 p.m., \$8 per adult, \$4 per child under 12.

Military Band Concert

A military band will present a complimentary concert to alumni and the community immediately following the Sunset Ceremony, Friday 5:30 p.m., Wren Front Yard. Tentatively scheduled is the Fort Monroe Continental Army Band. Bring your blanket and be prepared to enjoy delightful music.



All Alumni Events



OWJ

All alumni, students and faculty are invited to join the Order of the White Jacket for a Tercentenary luncheon honoring distinguished alumni leaders who have made significant contributions through public service. This event is co-sponsored by Virginia Power. For complete details see Reunion Events, page 4.

Preservation Hall Jazz Band

Come enjoy the Preservation Hall Jazz Band, a world-renowned group of musicians who play with the spirit and joy that is symbolic of New Orleans jazz. Featured as a special tribute to the Tercentenary. Wednesday 8 p.m.; Thursday 8 p.m., Phi Beta Kappa Hall, \$8 per person.



President's Continental Breakfast

President and Mrs. Timothy J. Sullivan, members of the Class of '66, will host a pre-parade continental breakfast for alumni on the President's House front lawn before the Homecoming Parade, Saturday 8-9:30 a.m.

Sandy Kelly All-Alumni Tennis Tournament

The 16th Annual Tennis Tournament in memory of Sandy Kelly '77 will be held over two days this year at the William and Mary Hall tennis courts. Play will be mixed doubles with prizes awarded to the winners. The cost to play is \$13 per person per day and includes lunch and a souvenir tennis towel. Parking will be available at the William and Mary Hall parking lot. Thursday 10 a.m.; Friday 10 a.m. Schedules distributed at 10 a.m.

Society of the Alumni Annual Meeting

Come to a brief session to hear an update on business matters of the Society, Thursday 6:30 p.m., William and Mary Hall, Person Room.

Sunset Ceremony

All alumni, guests, faculty and staff are invited to attend the Sunset Ceremony honoring the memory of alumni who have passed away during the preceding year. The ceremony includes a traditional military review by the Queen's Guard, remarks by members of the Society's Board of Directors and music from the William and Mary Choir. Friday 4:30 p.m., Wren Courtyard (rain location, Phi Beta Kappa Hall). The ceremony will be followed by a Military Band concert Friday 5:30 p.m., Wren Front Yard.

Exhibitions, Dedications, Special Tributes

Alumni Art Show

This special exhibition of works by alumni of the fine arts department will offer the College community an opportunity to view a diverse range of works reflecting the aesthetic vitality and achievements by former fine arts majors from around the country. Opens September 27 and continues through October 24, Andrews Hall. Monday-Saturday, 9 a.m. - 5 p.m., Sunday 10 a.m.-5 p.m.

In conjunction with the exhibition, the fine arts department will host a Homecoming reception, open to the public. Friday 3-5 p.m., Andrews Hall.

Earl Gregg Swem Library

"300 Years of Distinction: The College of William and Mary, 1693 to 1993," an exhibition commemorating the 300th anniversary of our nation's second oldest institution of higher learning, Wednesday 9 a.m.-5 p.m.; Thursday 9 a.m.-5 p.m.; Friday 9 a.m.-5 p.m.; Saturday 9 a.m.-6 p.m.; Sunday 1-6 p.m., Earl Gregg Swem Library, Zollinger Museum, Ground Floor. Nearby, in the Botetourt Gallery, view the gorgeously crafted Tercentenary quilt designed and made by Karen Koerner Haff '63.

Muscarella Museum of Art

Fifth Annual Faculty Show, a special exhibition showcasing works of art created by the College's Fine Arts faculty, Wednesday 10 a.m.-4:45 p.m.; Thursday 10 a.m.-4:45 p.m.; Friday 10 a.m.-4:45 p.m.; Saturday noon-4 p.m.; Sunday noon-4 p.m.

"Good Morning, America"

Prior to joining all the Homecoming festivities, tune in to ABC's *Good Morning, America* on Wednesday, October 20, from 7-9 a.m. Eight of William and Mary's newest alumni from the Class of 1993 will proudly greet viewers from our beautiful campus.

James Blair Statue

A new statue honoring James Blair has been commissioned by the College from faculty sculptor Lewis Cohen, associate professor of fine arts. Come share in the dedication ceremony honoring William and Mary's first president who served from 1693 to 1743. Thursday 11:30 a.m., between James Blair and Tyler halls. Buses will be provided for transportation to the Olde Guard Luncheon immediately following the dedication.



Join friends and fellow alumni for a glowing evening filled with fun and memories! In conjunction with the Annual Dinner and Dance of the Society of the Alumni, the Tercentenary Ball celebrates William and Mary's 300th anniversary with special elegance. Join friends for a cocktail hour, followed by a sumptuous dinner and an evening of dancing to the Kings of Swing. Black tie optional. Thursday, 7 p.m. cocktails; 8 p.m. dinner followed by a brief awards presentation and dancing until midnight. William and Mary Hall. \$75 per person, \$65 per person for Young Guard members (Classes of 1989-1993).

Guests of honor include this year's five Alumni Medallion recipients: A. Marshall Acuff, Jr. '62, Glenn Close '74, John S. Entwisle '44, Howard M. Smith Jr. '43 and Timothy J. Sullivan '66.



Acuff

Outstanding Alumni Chapter Awards also will be presented.

Reserved table seatings (10 per table) can be made in advance so you can enjoy this special evening with friends. Otherwise, seating will be assigned by class. When requesting reserved seating, total payment for all individuals seated together must be submitted with one registrant's form. See the Registration Form on page 13.



Close



Entwisle

Former rectors, presidents and their spouses serve as honorary chairs of The Tercentenary Ball:



Smith



Sullivan

Edward E. Brickell '50,
'70 C.A.S., '73 Ed.D.
Nancy D. Brickell

R. Harvey Chappell, Jr. '48,
'50 B.C.L., '84 LL.D.
Ann Callahan Chappell '48

Thomas A. Graves, Jr.
Zoë Graves

Ernest W. Goodrich '35
Sue Simmons Goodrich

John Lee Johnson, Jr. '28
Ruth Johnson

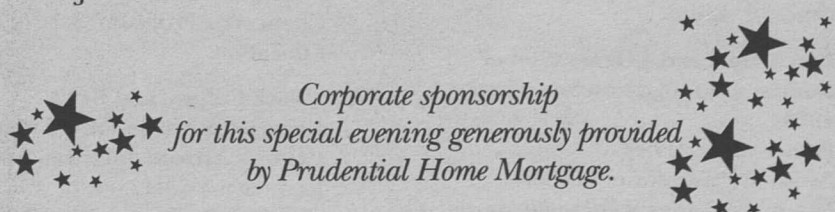
Herbert V. Kelly '41, '93 LL.D.
Beverly P. Kelly

Davis Y. Paschall '32
Agnes Winn Paschall '31

Anne Dobie Peebles '44

Paul R. Verkuil '61
Frances Gibson Verkuil '66

Hays T. Watkins '82 LL.D.
Betty J. Watkins





Academic Festival



Join fellow alumni and faculty members for a return to the classroom. From fine arts to physics, more than 80 sessions will offer you the chance to learn something new, review a familiar subject or visit with a favorite professor. Also included are special sessions, such as a three-hour voyage aboard the research vessel operated by the Virginia Institute of Marine Science, a career networking seminar sponsored by the Hulon Willis Association, a guided tour of the President's House, and several walking tours of campus.

INSTRUCTIONS:

Academic Festival sessions take place throughout the day on Thursday and Friday. Several sessions also take place on Saturday morning. Review the list and select first and second choices for each day. Spouses and other family members are also welcome. If your guest wishes to attend a separate session, indicate their choice on the guest line of the Registration Form.

Every effort will be made to accommodate your first choice, but all spaces will be first-come, first-served.

Indicate both your first and second choices on the Registration Form, using the letter and number designations (for example, T1, F45, S3) preceding each session. Your confirmation letter will indicate the sessions where space has been reserved for you.

The session locations will be announced in the official Homecoming Weekend Schedule, available in the Homecoming Tent. Admission to all symposia is free; however, tickets are required. Pick up your reserved tickets in the Homecoming Tent.

Thursday, October 21

9:30 a.m. - 12:30 p.m.

- T1 VIMS Field Trip and Research Expedition (Gloucester campus)**
Visit the Virginia Institute of Marine Science and take a voyage on the research vessel *Bay Eagle*. This field trip across the York River will include a visit to VIMS' sea turtle holding facility and oyster hatchery (both at the Gloucester campus) and a cruise (20 minutes) to Goodwin Island, site of the Chesapeake Bay National Estuarine Research Reserve. Passengers will join researchers in taking "grab samples" from the river bottom and taking temperature readings of the water. *Bay Eagle* capacity is 28 passengers. A repeat session will be offered from 1:30-4:30 p.m. (See T14.)
- 10:30 - 11:45 a.m.
- T2 Is Homecoming a Pilgrimage? The Curious Relationship Between Sport and Religion**
John M. Charles
Associate Professor of Kinesiology
- T3 How Real Organizations Innovate and Why it Matters**
Mariann Jelinek
Professor, School of Business Administration
- T4 Beyond the National Security State: U.S. Foreign Policy in the Post-Cold War Era**
Edward P. Crapol
Professor of History, *Thomas Ashley Graves Jr. Award*
- T5 Lorca, Dali, and a Generation of Genius: A Spotlight on Spain in the 1920s**
Francie Cate-Arries
Assistant Professor of Modern Languages, *Alumni Fellowship Award*

- T6 Cultural Wars: Reflections on "Classics," "Canons" and "Multiculturalism"**
James C. Livingston
Mason Professor of Religion, *Commonwealth's Outstanding Faculty Award*
- T7 The Cactus, The Eagle and the Maple Leaf: The North American Free Trade Agreement**
George W. Grayson
Professor of Government

1:15 - 2:30 p.m.

- T8 Death of the Dinosaurs**
R. Heather Macdonald
Associate Professor of Geology, *Alumni Fellowship Award, Thomas Jefferson Teaching Award*
- T9 H.G. Wells and the Shape of Future War**
David Dessler
Associate Professor of Government, *Alumni Fellowship Award, Thomas Jefferson Teaching Award*
- T10 The Sister Arts: Poetry and Painting in Eighteenth- and Nineteenth-Century England**
Robert P. Maccubbin
Professor of English
- T11 Managing Diversity at Work: A Case Study of a Japanese Multinational Firm in the United States**
Tomoko Hamada
Associate Professor of Anthropology, *Alumni Fellowship Award*
- T12 Games Colleges Play: Scandal and Reform in Intercollegiate Athletics**
John R. Thelin
Chancellor Professor, School of Education
- T13 "Black Culture and Black Consciousness" in Early Twentieth-Century African-American Literature**
Jacquelyn Y. McLendon
Associate Professor of English

1:30 - 4:30 p.m.

- T14 VIMS Field Trip and Research Expedition (Gloucester campus)**
See the description for T1.

2:45 - 4:15 p.m.

- T15 Southern Studies at William & Mary Today**
Susan V. Donaldson, Moderator
Associate Professor of English, *Alumni Fellowship Award, Thomas Jefferson Teaching Award*
- T16 Developing Talents in Schools**
Mary S. Landrum, Moderator
Assistant Professor, Center for Gifted Education, School of Education
- T17 Medieval Studies and the Microchip**
George D. Greenia
Director of Medieval and Renaissance Studies; Associate Professor of Modern Languages
- T18 Economic Policymaking in the Clinton Administration: A Nine-Month Report Card**
David H. Finifter, Moderator
Director, Thomas Jefferson Program in Public Policy; Associate Professor of Economics; *Alumni Fellowship Award*
- T19 The Demand for American Power: America, Its Friends and Foes in a Changing World**
Michael Clark, Moderator
Assistant Director, The Reves Center; Assistant Professor of Government

- T20 Test Your Cultural Knowledge**
Herbert Friedman
Professor of Psychology, *Alumni Fellowship Award*
Gary A. Kreps
Professor of Sociology, *Alumni Fellowship Award*
On behalf of the Student Assessment project. See description on page 9.

Friday, October 22

7:00 - 8:00 a.m.

- F1 Campus Landscape Guided Walk**
Martin C. Mathes
Professor of Biology

7:00 - 8:30 a.m.

- F2 Local Flora Guided Walk**
Donna M. E. Ware
Adjunct Associate Professor of Biology
- F3 Birds of the College Guided Walk**
Ruth A. Beck
Assistant Professor of Biology

9:00 a.m. - 4:00 p.m.

Every half hour beginning at 9:00 a.m., *The College of William & Mary at 300: And in All Time Coming*, this 16-minute visual history produced in association with the National Geographic Society, will be shown in Ewell Recital Hall. No ticket required.

The Greenhouse (located in Millington Hall) will be open, and cutting packets will be available, throughout the day. No ticket required.

9:00 - 10:15 a.m.

- F4 Through the Looking Glass: East Asia Past and Present**
Craig N. Canning
Associate Director, The Reves Center
Associate Professor of History; *Alumni Fellowship Award, Thomas Jefferson Teaching Award*
- F5 The Big Bang**
Marc T. Sher
Associate Professor of Physics; *Alumni Fellowship Award*
- F6 Heathcliff's Passion, Pip's Sacrifice: What We Can Learn from the Victorian Novel**
Deborah D. Morse
Assistant Professor of English
- F7 Changing Employee-Employer Relationships: Managing the New Psychological Contract for the 21st Century**
Ronald Sims
Professor, School of Business Administration
- F8 Greek Drama and Democratic Theory**
Joel D. Schwartz
Director, The Charles Center,
Associate Professor of Government, *Alumni Fellowship Award, Thomas Jefferson Teaching Award*
- F9 Why Is Your Arm Not Your Nose, Or How Does an Embryo Become an Adult?**
Lawrence L. Wiseman
Professor of Biology
- F10 Jefferson's Williamsburg Years**
Thaddeus W. Tate
Murden Professor of Humanities Emeritus

9:00 - 10:15 a.m.

- F11 Historical Tour of the William & Mary Campus**
Walking tours led by student tour guides



Academic Festival



10:30 - 11:45 a.m.

F12 Art, Science and the Nature of Beauty
David W. Thompson
Chancellor Professor of Chemistry,
Alumni Fellowship Award

F13 The Tough Questions Raised by Drug Testing in the Workplace
Paul Marcus
Haynes Professor of Law

F14 Bill Clinton's Latin America: How Much of a Change?
Judith Ewell
Newton Professor of History

F15 Adventures in Biography: On the Trail of Hemingway, Fitzgerald, Cheever, MacLeish and Others
Scott Donaldson
Professor Emeritus of English

F16 Lotteries and Game Shows: A Discussion of Probability
Richard G. Flood
Associate Professor, School of Business Administration

F17 Closing the Gender Gap — Women in the World of Sport
Christina W. Jackson
Associate Professor of Kinesiology

F18 A History of Architecture and Landscape at William & Mary in Its First Century
James D. Kornwolf
Professor of Fine Art, *Alumni Fellowship Award*
Surveys the history of the colonial campus and suggests its importance for Williamsburg and later American college design.

10:30 a.m. - Noon

F19 Encountering Foreign Languages and Cultures Through Technology
Gary A. Smith
Associate Professor of Modern Languages

F20 We Too Sing the Alma Mater
Carroll F. Hardy, Moderator
Associate Vice President for Student Affairs

F21 The Emerging Public School of the 21st Century: Current Issues Facing Educators and Families
Chriss Walther-Thomas, Moderator
Assistant Professor, School of Education

F22 Religion and the Body
Thomas M. Finn,
Professor of Religion;
Hans O. Tiefel,
Professor of Religion;
John A. Williams,
Kenan Professor of Humanities (Religion)

F23 After the Cold War: Is There Really A New World Order?
Alan J. Ward, Moderator
Class of 1935 Professor of Government

F24 Race, Class and Gender in the Early American South
Ronald Hoffman
Director, Institute of Early American History and Culture
Jon F. Sensbach
Post-doctoral Fellow, IEAHC
Kathleen M. Brown
Post-doctoral Fellow, IEAHC

F25 New Frontiers in Advanced Measurement Methods and Their Applications in the Coming Decade
Dennis M. Manos, Facilitator
CSX Professor of Applied Science

F26 Test Your Cultural Knowledge
Herbert Friedman
Professor of Psychology; *Alumni Fellowship Award*
Gary A. Kreps
Professor of Sociology; *Alumni Fellowship Award*
On behalf of the Student Assessment project. See description below.

1:00 - 2:15 p.m.

F27 Horror Films of the Silent Era: S. Murnau's *Nosferatu* and Germany of the Weimar Period
Jennifer Taylor
Assistant Professor of Modern Languages

F28 Restructuring the Soviet Economy
John S. Strong
Associate Professor, School of Business Administration, *Alumni Fellowship Award*, *Thomas Jefferson Teaching Award*

F29 The Coming Comet
Carl E. Carlson
Professor of Physics, *Alumni Fellowship Award*

F30 Afro-American Poetry: Recovering the Word
Hermine Pinson,
Assistant Professor of English;
Daniel F. Gutwein,
Associate Professor of Music

F31 New Perspectives on the American Civil Rights Movement
H. Cam Walker
Associate Professor of History, *Alumni Fellowship Award*, *Thomas Jefferson Teaching Award*

F32 *Harlot's Ghost* and *JFK*: A Fictional Conversation With Norman Mailer, Oliver Stone, Earl Warren, and Hugo Black
Rodney A. Smolla
Director, Institute of Bill of Rights Law; Hanson Professor of Law

F33 Listen to Your Mother: Environmental Therapy for the Home Planet
Jon S. Kerner
Associate Professor of Sociology

F34 Virginia's Established Church
David Holmes
Professor of Religion, *Thomas Ashley Graves Jr. Award*

1:00 - 2:15 p.m.

F35 Historical Tour of the William & Mary Campus
Walking tours led by student tour guides

1:30 - 3:00 p.m.

F36 Guided Tour of The President's House
Featuring a docent-led tour of the furniture of the 18th century.

2:00 - 5:00 p.m.

F37 Career Networking Workshop/Forum
Opportunity for students and alumni to exchange business cards, discuss career options and talk about challenges faced by minorities in the workplace. Sponsored by the Hulon Willis Association.

2:30 - 3:45 p.m.

F38 Art in Context: Sites and Sights
Miles L. Chappell '60
Professor of Fine Arts, *Alumni Fellowship Award*

F39 The Bible as Literature
Adam S. Potkay
Assistant Professor of English

F40 The Chesapeake Bay: Its Ups and Downs
Gerald H. Johnson
Professor of Geology, *Thomas Jefferson Teaching Award*, *Commonwealth's Outstanding Faculty Award*

F41 Human Attachment from the Cradle to the Grave: Mom, Romantic Love and Religion
Lee Kirkpatrick
Assistant Professor of Psychology

F42 Left Brain, Right Brain: Fact or Fiction?
John F. Lavach
Professor, School of Education, *Alumni Fellowship Award*, *Thomas Ashley Graves Jr. Award*

F43 The Limits of Tolerance
James Harris Jr.
Professor, Philosophy

F44 An Imagined Continent: Thomas Jefferson and the Journey of Lewis and Clark
Chandos Brown
Director, Commonwealth Center for the Study of American Culture, Associate Professor of History

F45 What Your Children Need to Know About Mathematics
George T. Rublein
Associate Professor of Mathematics

2:30 - 4:00 p.m.

F46 What Are Wetlands, Why Are They Disappearing and Why Should We Care?
Gene M. Silberhorn,
Professor of Marine Science;
Carl Hershner,
Associate Professor of Marine Science

F47 Why Clinton's Economic Policies Are/ Are Not Working
William J. Hausman, Moderator
Professor of Economics, *Alumni Fellowship Award*

F48 Joanne Braxton and Rex Ellis Read Paul Lawrence Dunbar
Joanne M. Braxton
Professor of English, *Alumni Fellowship Award*, *Thomas Jefferson Teaching Award* and *Commonwealth's Outstanding Faculty Award*
Rex Ellis '85 C.A.S., '89 Ed.D.
Director, Office of Museum Programs, The Smithsonian Institution

F49 Unlearning By Heart: Women's Studies' Role in the University
Deborah G. Ventis, Moderator
Coordinator, Women's Studies
Associate Professor of Psychology

F50 New Directions for International Trade Policy in the Clinton Administration
Ambassador Robert E. Fritts,
Moderator
Senior Fellow, Thomas Jefferson Program in Public Policy

F51 Bill Clinton, Ross Perot and the Reform of American Politics
John J. McGlennon, Moderator
Professor of Government, *Alumni Fellowship Award*;
Ronald B. Rapoport,
Professor of Government;
Lawrence C. Evans,
Assistant Professor of Government, *Alumni Fellowship Award*

F52 The Chemistry Magic Show
Gary Rice
Associate Professor of Chemistry, *Alumni Fellowship Award*

F53 The College of William & Mary Library: Yesterday and Tomorrow
Susan A. Riggs,
Manuscripts Cataloger, Swem Library;
Nancy H. Marshall,
Dean of University Libraries

F54 Test Your Cultural Knowledge
Herbert Friedman
Professor of Psychology; *Alumni Fellowship Award*
Gary A. Kreps
Professor of Sociology; *Alumni Fellowship Award*
On behalf of the Student Assessment project. See description on this page.

4:00 - 4:45 p.m.

F55 Greenhouse Tour, Millington Hall

Saturday, October 23

7:00 - 8:00 a.m.

S1 Campus Landscape Guided Walk
Martin C. Mathes
Professor of Biology

7:00 - 8:30 a.m.

S2 Local Flora Guided Walk
Donna M. E. Ware
Adjunct Associate Professor of Biology

S3 Birds of the College Guided Walk
Ruth A. Beck
Assistant Professor of Biology

9:00 a.m. - 4:00 p.m.

The Greenhouse (located in Millington Hall) will be open, and cutting packets will be available, throughout the day. No ticket required.

10:30 - 11:30 a.m.

The President's House will be open to visitors.

Student Assessment Project

The College of William and Mary is actively participating in the state-mandated student assessment project. Your help in assessing the strengths and weaknesses of our undergraduate general education offerings will be of great value to us. There are two ways to help.

TEST YOUR CULTURAL KNOWLEDGE...and find out how you did! All in 90 minutes. The more alumni who participate, the better our data will be.

T20	Thursday	2:45 - 4:15 p.m.
F26	Friday	10:30 a.m. - 12:00 noon
F54	Friday	2:30 - 4:00 p.m.

FOCUS GROUP INTERVIEWS: We need 12 women and 12 men from the classes of 1960-1980 to participate in focus groups to discuss general education at William and Mary. This is a wonderful opportunity for you to share your views and suggestions with us. If you would like to participate, call the Student Assessment Office at 804/221-2608 to register.

Focus 1	Thursday	2:45 - 4:15 p.m.
Focus 2	Friday	9:30 - 11:00 a.m.
Focus 3	Friday	1:30 - 3:00 p.m.



Schedule of Events



Wednesday, October 20

- 9 a.m.-5 p.m. "300 Years of Distinction: The College of William and Mary, 1693 to 1993," an exhibition commemorating the 300th anniversary of our nation's second oldest institution of higher learning
*Earl Gregg Swem Library
Zollinger Museum*
- 9 a.m.-5 p.m. Alumni Art Exhibition, a special collection of works by alumni of the Fine Arts department
Andrews Hall
- 10 a.m.-4:45 p.m. Muscarelle Museum of Art Fifth Annual Faculty Show exhibition showcasing art works created by the College's Fine Arts faculty
Muscarelle Museum
- Noon-7 p.m. Homecoming Tent open: Ticket Pickup and Alumni Gift Shop
Alumni House, front lawn
- 8 p.m. Preservation Hall Jazz Band Concert
Phi Beta Kappa Memorial Hall
- 8 p.m.-Midnight Class of 1968 Hospitality Suite
*Williamsburg Hospitality House
Governor's Suite 422 and Room 420*

Thursday, October 21

- 8 a.m.-6 p.m. Homecoming Tent open: Ticket Pickup and Alumni Gift Shop
Alumni House, front lawn
- 9 a.m.-5 p.m. "300 Years of Distinction: The College of William and Mary, 1693 to 1993," an exhibition commemorating the 300th anniversary of our nation's second oldest institution of higher learning
*Earl Gregg Swem Library
Zollinger Museum*
- 9 a.m.-5 p.m. Alumni Art Exhibition, a special collection of works by alumni of the fine arts department
Andrews Hall
- 9:30 a.m.-12:30 p.m. VIMS Field Trip*
Virginia Institute of Marine Science
- 10 a.m. Golf Tournament (breakfast and check-in 9 a.m.) Co-sponsored by the *Daily Press*
Ford's Colony
- 10 a.m. Sandy Kelly Tennis Tournament
William and Mary Hall tennis courts
- 10 a.m.-4:45 p.m. Muscarelle Museum of Art Fifth Annual Faculty Show exhibition showcasing art works created by the College's Fine Arts faculty
Muscarelle Museum
- 10:30-11:45 a.m. Homecoming Academic Festival Sessions
Campuswide
- 11:30 a.m. James Blair Statue dedication (buses will be provided for transportation to the Olde Guarde Luncheon immediately following the dedication) *between James Blair and Tyler halls*
- 12:30 p.m. Olde Guarde Reception (cash bar)
*Williamsburg Lodge
Virginia Room*
- 1:15 p.m. Olde Guarde Luncheon
Williamsburg Lodge, Virginia Room
- 1:15-2:30 p.m. Homecoming Academic Festival Sessions
Campuswide
- 1:30-4:30 p.m. VIMS Field Trip*
Virginia Institute of Marine Science
- 2:45-4:15 p.m. Homecoming Academic Festival Sessions
Campuswide
- 4 p.m.-Midnight Class of 1968 Hospitality Suite
*Williamsburg Hospitality House
Governor's Suite 422 and Room 420*
- 5 p.m. GALA Hospitality Suite (BYOB)
*Williamsburg Center
Penthouse Suite*
- 5-7 p.m. Class of 1937 Hospitality Suite (BYOL)
Heritage Inn, Dining Room/Patio
- 5-7 p.m. Class of 1953 Hospitality Suite (BYOL)
Williamsburg Hospitality House, Suite 320
- 5-7:30 p.m. Class of 1939 Hospitality Suite (BYOL)
The Woodlands, Rooms 5074 & 5075
- 5:15 p.m. Class of 1948 bus transportation to and from Cocktail Party pick up and drop off
Swem Library, Botetourt Gallery
- 5:30-6:30 p.m. Class of 1948 Cocktail Party Hosted by the Friends of the Library
Swem Library, Botetourt Gallery
- 6-8 p.m. Classes of 1940 and 1941 Cocktail Party hosted by Ed and Dinny Wetter
Directions available in Homecoming Tent
- 6:30 p.m. Society of the Alumni Annual Meeting
William and Mary Hall, Person Room
- 6:45-7:45 p.m. Class of 1948 Gathering/Supper (BYOL)
Ford's Colony
- 7 p.m. Tercentenary Ball.
Reception 7 p.m.; Dinner 8 p.m.; followed by brief program and dance
William and Mary Hall
- 7-10 p.m. Class of 1978 Hospitality Suite (cash bar)
*Fort Magruder
Room TBA*
- 7-Midnight Class of 1958 Hospitality Suite (BYOL)
Williamsburg Hospitality House
- 8-10 p.m. Class of 1948 Supper
Ford's Colony
- 8 p.m. Preservation Hall Jazz Band Concert
*Phi Beta Kappa
Memorial Hall*
- 9 p.m. Theta Delta Chi Bourbon Club
*Theta Delta Chi House
Epsilon Charge Room*
- 11 p.m.-1 a.m. Class of 1963 Hospitality Suite (BYOL)
*Holiday Inn 1776
Room TBA*



Homecoming 1973

Friday, October 22

- 7-8 a.m. Homecoming Academic Festival Sessions
Campuswide
- 8 a.m.-4 p.m. Alumni Children Admission Interviews by appointment only. Contact Admission Office
*Blow Memorial Hall at
804/221-4223*
- 8 a.m. GALA Hospitality Suite (coffee)
*Williamsburg Center
Penthouse Suite*
- 8 a.m.-6 p.m. Homecoming Tent open: Ticket Pickup and Alumni Gift Shop
Alumni House, front lawn
- 8-9:30 a.m. Class of 1953 Continental Breakfast
Williamsburg Hospitality House, Suite 320
- 8-10 a.m. Class of 1958 Continental Breakfast
Williamsburg Hospitality House, Room TBA
- 8 a.m. GALA Hospitality Suite
Williamsburg Center, Penthouse Suite
- 8 a.m.-Noon Class of 1968 Hospitality Suite/Continental Breakfast
*Williamsburg Hospitality House
Governor's Suite 422 and Room 420*
- 9 a.m. "The College of William and Mary at 300: And in All Time Coming"* *shown every half hour*
Ewell Hall
- 9 a.m.-10:15 a.m. Homecoming Academic Festival Sessions
Campuswide
- 9 a.m.-4 p.m. Greenhouses open for tours and cutting packets*
Millington Hall
- 9 a.m.-5 p.m. "300 Years of Distinction: The College of William and Mary, 1693 to 1993," an exhibition commemorating the 300th anniversary of our nation's second oldest institution of higher learning
*Earl Gregg Swem Library
Zollinger Museum*
- 9 a.m.-5 p.m. Alumni Art Exhibition, a special collection of works by alumni of the fine arts department
Andrews Hall
- 10 a.m. Golf Tournament (breakfast and check-in 9 a.m.)
Two Rivers Country Club
- 10 a.m. Sandy Kelly Tennis Tournament
William and Mary Hall tennis courts
- 10 a.m.-4:45 p.m. Muscarelle Museum of Art Fifth Annual Faculty Show exhibition showcasing art works created by the College's Fine Arts faculty
Muscarelle Museum
- 10:30 a.m.-Noon Homecoming Academic Festival Sessions
Campuswide
- Noon OWJ Reception/Luncheon, co-sponsored by Virginia Power Luncheon 12:30 p.m. (cash bar)
William and Mary Hall
- 12:45 p.m. Class of 1968 Cheese Shop Lunch
*Phi Beta Kappa Hall
Dodge Room*
- 1-2:15 p.m. Homecoming Academic Festival Sessions
Campuswide
- 1:30-3 p.m. President's House Guided Tour*
- 2-4 p.m. Class of 1968 "Big Chill" Colloquy
Room TBA
- 2-5 p.m. Hulon Willis Association Career Networking Workshop for alumni and students*
Campus Center, Atrium
- 2:30-4 p.m. Homecoming Academic Festival Sessions
Campuswide
- 3-5 p.m. M.B.A. Business Panel/Reception
Williamsburg Lodge
- 3-5 p.m. Alumni Art Exhibition Reception
Andrews Hall
- 3-6 p.m. Class of 1968 Hospitality Suite
*Williamsburg Hospitality House
Governor's Suite 422 and Room 420*
- 3-6:30 p.m. Class of 1939 Hospitality Suite (BYOL)
The Woodlands, Rooms 5074 & 5075
- 3 p.m.-'til Class of 1937 Hospitality Suite (BYOL)
*Heritage Inn
Dining Room/Patio*
- 3:30 p.m. William and Mary Choir Concert
Wren Chapel
- 4 p.m. College Admission Seminar
Blow Memorial Hall, Admission Lobby



Schedule of Events



4 p.m.	Men's and Women's Green vs. Gold Swimming Meet Picnic/Cookout post-swim meet	Adair Pool
4:45 p.m.	Greenhouse Tour*	Millington Hall
4:46 p.m.	Class of 1958 Hospitality Suite (BYOL)	Williamsburg Hospitality House, Room TBA
4:30 p.m.	Sunset Ceremony	Wren Courtyard (rain location, Phi Beta Kappa)
5-5:30 p.m.	M.B.A. Alumni Association Annual Meeting	Williamsburg Lodge
5 p.m.	GALA Hospitality Suite (BYOB)	Williamsburg Center Penthouse Suite
5-7 p.m.	Pi Kappa Alpha Happy Hour (BYOB)	Pi Kappa Alpha House
5:30 p.m.	Military Band Concert	Wren Front Yard
5:30 p.m.	Lambda Chi Alpha Reception	Lambda Chi Alpha House
6 p.m.	Marshall-Wythe Class of 1973 Cocktail Party hosted by Dean and Mrs. Richard Williamson	229 William Claiborne Williamsburg
6 p.m.	Marshall-Wythe Class of 1978 Williamsburg Winery Wine Tasting	National Center for State Courts
6 p.m.	Marshall-Wythe Class of 1983 Cocktail Party (heavy hors d'oeuvres and open bar)	Courtyard by Marriott
6-7 p.m.	Class of 1953 Cocktail Party hosted by the Muscarelle Museum	Muscarelle Museum
6-8 p.m.	Classes of 1940 and 1941 Cocktail Party	Home of Herb and Jane Young. Directions available in Homecoming tent.
6-8 p.m.	Class of 1973 Hospitality Suite (cash bar)	Fort Magruder Room TBA
6-8 p.m.	Class of 1978 Hospitality Suite (cash bar)	Fort Magruder Room TBA
6-10 p.m.	Class of 1963 Cocktail Party/ Buffet Dinner. Cocktail Party (cash bar) 6-7 p.m., Buffet Dinner 7-10 p.m.	Holiday Inn 1776, Middle Plantation Room
6:30-7:30 p.m.	Alumni Band rehearsal for halftime	Campus Center Little Theatre
6:30 p.m.	Marshall-Wythe Class of 1968 Cocktail Party hosted by Frank Morton and Mark Dray	117 Thomas Dale Williamsburg
6:30-7:45 p.m.	Class of 1968 Cocktail Party	Wren Building Great Hall
6:45-7:45 p.m.	Class of 1948 Reception (cash bar)	Williamsburg Lodge, East Gallery
7 p.m.	Class of 1939 Dinner	Cascades
7 p.m.	M.B.A. Reunion Reception/Dinner for Classes of 1973, 1978, 1983 and 1988; E.M.B.A. Classes of 1988 and 1991 Reception 7 p.m.; Dinner 7:30 p.m.	Williamsburg Lodge
7 p.m.	GALA Reception (cash bar) 7 p.m.; Dinner 8 p.m. followed by awards ceremony	Phi Beta Kappa Hall Dodge Room
7 p.m.	Greek Step Show	William and Mary Hall
7-9:30 p.m.	Marshall-Wythe Class of 1988 Reunion Party, heavy hors d'oeuvres and open bar) hosted by Bob Eveleigh, Brian Jackson, Greg Paw and Mike Deneka	National Center for State Courts
7 p.m.-Midnight	Class of 1958 Cocktail/ Buffet & Dancing (cash bar)	Williamsburg Hospitality House, Westminster Room
7 p.m.-1 a.m.	South Hampton Roads Chapter Reception	Quality Suites Hotel
7:30-11 p.m.	Class of 1953 Dinner/Dance (cash bar)	Hospitality House Empire Dining Room

Remember to register early! All events will have limited availability, so don't be disappointed. Return your Registration Form postmarked by August 1 for the USAir drawing!



8 p.m.	Classes of 1940 & 1941 Dinner	Homecoming 1992 Hospitality House Gloucester Dining Room
8-10 p.m.	Class of 1948 Dinner	Williamsburg Lodge, Virginia Room
8 p.m.-Midnight	Class of 1973 Class Party (cash bar)	Campus Center Ballroom
8 p.m.-Midnight	Class of 1978 Class Night (cash bar)	Fort Magruder Inn Petersburg Room
8 p.m.-Midnight	Marshall-Wythe Casino Night sponsored by the Public Service Fund	Law School Lobby
8 p.m.-1 a.m.	Class of 1968 Dinner/Dance (cash bar)	Trinkle Hall
8 p.m.-1:30 a.m.	Class of 1983 Class Party (cash bar)	Holiday Inn Downtown, Holiday Inn
8:30 p.m.	Botetourt Singers Concert	Wren Chapel
8:30-10:30 p.m.	Interservice Christian Fellowship Meeting/ Reception to celebrate the 30th anniversary of the chapter's charter	Millington 150
8:30 p.m.-12:30 a.m.	Class of 1988 Party/Dance	Williamsburg Hospitality House Williamsburg & Berkeley Ballroom
9 p.m.	Theta Delta Chi Cocktail Reception	Theta Delta Chi House
10 p.m.	GALA Reception (open bar)	Williamsburg Center Atrium Room
10 p.m.-Midnight	Hulon Willis Hospitality Association Suite (cash bar)	Courtyard by Marriott
10 p.m.-Midnight	Class of 1963 Hospitality Suite (cash bar)	Holiday Inn 1776 Room TBA

Saturday, October 23

7-8:30 p.m.	Homecoming Academic Festival Sessions	Campuswide
7-9 a.m.	Class of 1978 Coffee Service	Fort Magruder, Room TBA
7-9 a.m.	Association of 1775 Mess Hall Breakfast	Sorority Court
7 a.m.-game time	Class of 1939 Hospitality Suite	The Woodlands Rooms 5074 & 5075
8 a.m.	Homecoming 5K Run sponsored by the Williamsburg Alumni Chapter and the Richmond Times-Dispatch. Participants should arrive by 7:30 a.m.	William and Mary Hall
8-9:30 a.m.	President's Continental Breakfast	President's House front lawn
8 a.m.-5 p.m.	Homecoming Tent open: Ticket Pickup and Alumni Gift Shop	Alumni House, front lawn
8 a.m.	GALA Hospitality Suite (coffee)	Williamsburg Center Penthouse Suite
9 a.m.	School of Education Symposium "So You Chose to be an Educator"	Millington 150
9-10:30 a.m.	Class of 1953 Continental Breakfast	Blow Memorial Hall Board Room
9 a.m.-6 p.m.	"300 Years of Distinction: The College of William and Mary, 1693 to 1993," an exhibition commemorating the 300th anniversary of our nation's second oldest institution of higher learning	Swem Library, Zollinger Museum
9 a.m.-5 p.m.	Alumni Art Exhibition, a special collection of works by alumni of the fine arts department	Andrews Hall
9:30 a.m.	64th Annual Homecoming Parade depicting the College's 300 Year History	Duke of Gloucester Street and Richmond Road Capitol-start, Zable Stadium-End
10 a.m.-11 p.m.	Busch Gardens open to all William and Mary Ticketholders	
10:30 a.m.	Theta Delta Chi Bloody Breakfast	Theta Delta Chi House Porch



Photo courtesy of Thomas L. Williams

Homecoming 1982



Schedule of Events



10:30 a.m.	Alumni Band Field Rehearsal	Zable Stadium
10:30-11:30 a.m.	President's House Open	
10:30 a.m.-12:30 p.m.	Alpha Chi Omega Reception	Alpha Chi Omega House
10:30 a.m.-12:30 p.m.	Alpha Phi Omega Reception	Place TBA
10:30 a.m.-1 p.m.	Hulon Willis Association Brunch and Annual Meeting	Campus Center Atrium
10:30 a.m.-1 p.m.	Young Guarde Party	Alumni House, south lawn (Rain location: Campus Center Ballroom)
11 a.m.	Tri Delta Reception	Tri Delta House
11 a.m.	Women's Soccer, W&M vs. Virginia Tech, Post-soccer game Tailgate	Barksdale Field
11 a.m.	Hockey Alumni Game	Busch Field
11 a.m.	Christopher Wren Singers Concert, Reception to follow	Crim Dell
11 a.m.	Intervarsity Christian Fellowship Brunch	Williamsburg Community Chapel
11 a.m.-1 p.m.	Alumni Band Reunion Picnic	Alumni House, north lawn
11 a.m.-1 p.m.	Student Association Alumni Second Annual Reception	Location TBA
11 a.m.-1 p.m.	Asian Student Union Reception	Campus Center, Room E
11 a.m.-1 p.m.	M.B.A. Pre-Game Family Picnic	Blow Memorial Hall, lawn
11 a.m.-1 p.m.	B.B.A. Pre-Game Family Picnic	Blow Memorial Hall, lawn
11 a.m.-1 p.m.	Marshall-Wythe Pre-Game BBQ	Law School, lawn
11 a.m.-1 p.m.	Luncheon-on-the-Lawn	Sunken Garden (Rain location: W&M Hall)
11:15 a.m.-12:45 p.m.	Class Photographs	Sunken Garden (Rain location: W&M Hall)
	Class of 1948	11:15 a.m.
	Class of 1953	11:25 a.m.
	Class of 1958	11:35 a.m.
	Class of 1963	11:45 a.m.
	Class of 1968	11:55 a.m.
	Class of 1973	12:05 p.m.
	Class of 1978	12:15 p.m.
	Class of 1983	12:25 p.m.
	Class of 1988	12:35 p.m.
11:30 a.m.	School of Education Picnic	Jones Hall, north lawn
Noon-4 p.m.	Muscarelle Museum of Art Fifth Annual Faculty Show exhibition showcasing art works created by the College's Fine Arts faculty	Muscarelle Museum
Pre-game	Baseball Alumni Game	Baseball Field
Pre-game	Kappa Alpha Reception with recipient of the Frank Shields Award announced at that time	Kappa Alpha House
Pre-game	Pi Kappa Alpha Breakfast	Pi Kappa Alpha House
Pre-game	Cheerleaders' tailgate	Baseball Field
1 p.m.	Football game - W&M vs. Villanova	Zable Stadium
Post-game	Pi Kappa Alpha Reception (BYOB)	Pi Kappa Alpha House
Post-game	Kappa Alpha Open House	Kappa Alpha House
Post-game-6 p.m.	Class of 1939 Hospitality Suite (BYOL)	The Woodlands Rooms 5074 & 5075
4-6 p.m.	Class of 1958 Hospitality Suite (BYOL)	Williamsburg Hospitality House, Room TBA
4-6 p.m.	Class of 1968 Hospitality Suite	Williamsburg Hospitality House Governor's Suite 422 and Room 420
4:30 p.m.	Women's Tennis, Alumnae vs. Varsity	Adair Courts
5 p.m.	GALA Hospitality Suite (BYOB)	Williamsburg Center Penthouse Suite
5 p.m.	Women's Volleyball, W&M vs. Virginia Tech	Adair Gym or W&M Hall
Evening	Pi Kappa Alpha Formal	Place TBA
5-7 p.m.	Field Hockey and Lacrosse Reception Place	TBA
6 p.m.-Midnight	Class of 1973 Hospitality Suite	Fort Magruder Inn Room TBA
7 p.m.	Busch Gardens Birthday Party Begins	Busch Gardens, The Old Country
8:30 p.m.	Busch Gardens Cake Cutting Ceremony	Royal Palace Theatre
9:30 p.m.	Busch Gardens Fireworks	
8 p.m.	Men's and Women's Track and Cross Country Bonfire	Berryhill's Farm
9 p.m.-'til	Class of 1953 Hospitality Suite (BYOL)	Williamsburg Hospitality House, Suite 320
10 p.m.-Midnight	Hulon Willis Association Hospitality Suite (cash bar)	Courtyard by Marriott
10 p.m.-Midnight	Class of 1958 Hospitality Suite (cash bar)	Williamsburg Hospitality House, Room TBA
10 p.m.-'til	Class of 1937 Hospitality Suite (BYOL)	Heritage Inn Dining Room/Patio
Post-Busch Gardens	Lambda Chi Alpha Party	Lambda Chi Alpha House
Post-Busch Gardens	Theta Delta Chi Band Party	Theta Delta Chi House

Sunday, October 24

7 a.m.-Noon	Class of 1939 Hospitality Suite	The Woodlands, Rooms 5074 & 5075
8 a.m.	GALA Hospitality Suite (coffee)	Williamsburg Center Penthouse Suite
8-10 a.m.	Class of 1958 Continental Breakfast	Williamsburg Hospitality House, Room TBA
8-10 a.m.	Class of 1978 Coffee Service	Fort Magruder, Room TBA
8-11 a.m.	Class of 1968 Hospitality Suite/Continental Breakfast	Williamsburg Hospitality House Governor's Suite 422 and Room 420
9-10:30 a.m.	Class of 1953 Continental Breakfast hosted by Jim and Bev Kelly.	Directions available in the Homecoming Tent
9-11 a.m.	Ex Libris Society Brunch	Swem Library, Botetourt Gallery
9-11 a.m.	Class of 1963 Breakfast Buffet	Holiday Inn 1776 Spencer's Annex
10 a.m.-5 p.m.	Alumni Art Exhibition, a special collection of works by alumni of the fine arts department	Andrews Hall
10 a.m.-12:30 p.m.	GALA Buffet Brunch	Williamsburg Center Penthouse Suite
10 a.m.-1 p.m.	Homecoming Tent open: Alumni Gift Shop	Alumni House, front lawn
11 a.m.	Men's Alumni Soccer Game	Dillard Field
11 a.m.	Baseball Alumni Game	Baseball Field
11 a.m.	Epsilon Association Annual Business Meeting	Theta Delta Chi House
Noon	Baseball Alumni Picnic	Baseball Field
Noon	Alumnae Triples Volleyball Tournament	Adair Gym
Noon	Lacrosse Alumni Game	Barksdale Field
Noon-4 p.m.	Muscarelle Museum of Art Fifth Annual Faculty Show exhibition showcasing art works created by the College's Fine Arts faculty	Muscarelle Museum
12:30 p.m.	Brunch hosted by the Balfour-Hillel Jewish Student Group	Temple Beth El
1 p.m.	Marshall-Wythe Class of 1973 Brunch hosted by Sam and Merle Powell	3200 Derby Lane, Williamsburg. (Rain Location: Phi Beta Kappa Hall, Dodge Room)
1-6 p.m.	"300 Years of Distinction: The College of William and Mary, 1693 to 1993," an exhibition commemorating the 300th anniversary of our nation's second oldest institution of higher learning	Swem Library, Zollinger Museum
2 p.m.	William and Mary Club Ultimate Frisbee Game	Barksdale Field

**Tickets to all events will be limited.
Don't be disappointed. Register before August 1!**



Tricia Jefferson '93 and George Perry

HOMECOMING '93 T-SHIRT

The official Tercentenary Homecoming T-shirt is our best and most colorful yet! Featuring the Homecoming logo in four colors, this year's 100 percent cotton "Hanes Beefy T" shirt is available in white or black. Order by August 1, 1993, to ensure that you receive your first choice of color and size and that you are entered in the USAir drawing for early registrants. The T-shirts will be available for pickup throughout the weekend in the Alumni Gift Shop located in the Homecoming Tent. The price is \$15 per shirt. Complete the Registration Form on page 13, Section VI. Please specify your choice of color (white, black) and size (M, L or XL).



Registration Form



Check here if this is a new address.

For your convenience use the adhesive label from back cover in the space provided, or if new address, complete the section below.

I. NAME AND ADDRESS

Name (first) (maiden/middle) (last)	Class Year
Street	
City, State, Zip	
Telephone: Daytime	Evening

Preferred Name on Nametag

REGISTER EARLY! RETURN THIS FORM POSTMARKED BY AUGUST 1 TO BE ELIGIBLE FOR A DRAWING OF TWO ROUNDTRIP USAIR TICKETS TO EUROPE!
MAIL TO:

HOMEcoming 1993, SOCIETY OF THE ALUMNI
P.O. Box 2100, WILLIAMSBURG, VA 23187-2100

FINAL REGISTRATION DEADLINE: SEPTEMBER 1. AFTER SEPTEMBER 1, COST OF EACH EVENT INCREASES \$2. THERE WILL BE NO TELEPHONE REGISTRATIONS TAKEN.

Spouse/Guest (first) (maiden/middle) (last) Class Year (If W&M)

Street (if different from address on left)

City, State, Zip

Preferred Name on Nametag

Note: If registering more than one guest, please include a separate sheet listing the following for each guest: complete married name for nametag, class year (if W&M), city and state.

II. GOLF AND TENNIS TOURNAMENTS

Thursday Golf and Tennis Tournament Participants, please complete:

Golf Registrant	Class Year
Golf Registrant	Class Year
Golf Registrant	Class Year
Golf Registrant	Class Year

Tennis Registrant	Class Year
Tennis Registrant	Class Year
Tennis Registrant	Class Year
Tennis Registrant	Class Year

Friday Golf and Tennis Tournament Participants, please complete:

Golf Registrant	Class Year
Golf Registrant	Class Year
Golf Registrant	Class Year
Golf Registrant	Class Year

Tennis Registrant	Class Year
Tennis Registrant	Class Year
Tennis Registrant	Class Year
Tennis Registrant	Class Year

III. ALL-ALUMNI EVENTS

	No. persons	Cost per person	Total
B Busch Gardens Party (limit 2 per alumni household)	___ x NC	NC*	NC*
TG Golf Tournament Thursday	___ x 75.00 =		
TT Tennis Tournament Thursday	___ x 13.00 =		
FG Golf Tournament Friday	___ x 75.00 =		
FT Tennis Tournament Friday	___ x 13.00 =		
TFG Golf Tournaments Thursday and Friday	___ x 140.00 =		
HR Homecoming 5K Run Saturday	___ x 12.50 =		
WMCC W&M Choir Concert Friday	___ x NC =	NC	NC
CAS College Admission Seminar Friday	___ x NC =	NC	NC
PCB President's Continental Breakfast Saturday	___ x NC =	NC	NC
LLA Luncheon-on-the-Lawn Saturday (Adult)	___ x 8.00 =		
LLC Luncheon-on-the-Lawn Saturday (Children)	___ x 4.00 =		
JAZW Preservation Hall Jazz Band Wednesday	___ x 8.00 =		
JAZT Preservation Hall Jazz Band Thursday	___ x 8.00 =		

	No. persons	Cost per person	Total
TTB Tercentenary Ball Thursday	___ x 75.00 =		
TBY Tercentenary Ball Thursday Young Guards may request a total of 2 tickets only. Young Guards' Classes 1989-1993	___ x 65.00 =		

Tercentenary Ball — Reserved Table Seating
When reserving a full table, total payment for all individuals seated together must be compiled and submitted with one registrant's form. Please seat me (us) with the following individuals at the Tercentenary Ball:

Print Name and Class Year (if W&M)

- _____
- _____
- _____
- _____
- _____
- _____
- _____
- _____
- _____
- _____

Subtotal = _____

IV. REUNION EVENTS

	No. persons	Cost per person	Total
Alumni Band Reunion			
ABR Alumni Band Rehearsal Friday	___ x NC	NC	NC
ABP Alumni Band Reunion Picnic Saturday (Adult)	___ x 8.00 =		
ABPC Alumni Band Reunion Picnic Saturday (Children)	___ x 4.00 =		
ABH Alumni Band Halftime Participant Saturday Indicate Instrument _____			
ABT Alumni Band T-shirt size: M L XL			
Association of 1775			
A75 Mess Hall Breakfast Saturday	___ x 5.00 =		
Ex Libris Society			
EXL Sunday Brunch	___ x 6.00 =		
Hulon Willis Association			
HWH Hulon Willis Hospitality Suite Friday and Saturday	___ x NC	NC	NC
HWB Hulon Willis Brunch Saturday	___ x 13.00 =		

* No Cost



Registration Form



	No. persons	Cost per person	Total
Marshall-Wythe Law Alumni			
MWCN Casino Night Friday	___	x 10.00 =	_____
Pre-Game BBQ Saturday			
MWBQ Adult	___	x 15.00 =	_____
MWCQ Children under 12	___	x 7.00 =	_____
MW83P Law Class of 1978 Wine Tasting Friday	___	x 12.00 =	_____
MW83P Law Class of 1983 Cocktail Party Friday	___	x 12.00 =	_____
MW88P Law Class of 1988 Reunion Party Friday	___	x 10.00 =	_____
M.B.A. Alumni			
MBA73 M.B.A. Class of 1973 Dinner/Reception Friday (cash bar)	___	x 30.00 =	_____
MBA78 M.B.A. Class of 1978 Dinner/Reception Friday (cash bar)	___	x 30.00 =	_____
MBA83 M.B.A. Class of 1983 Dinner/Reception Friday (cash bar)	___	x 30.00 =	_____
MBA88 M.B.A. Class of 1988 Dinner/Reception Friday (cash bar)	___	x 30.00 =	_____
M.B.A. Family Picnic (Saturday)			
MBP Adults	___	x 10.00 =	_____
MBC Children 6-18	___	x 5.00 =	_____
MBUC Children under 6	___	x NC =	NC
E.M.B.A. Alumni			
EMBA88 E.M.B.A. Class of 1988 Dinner/Reception Friday (cash bar)	___	x 30.00 =	_____
EMBA91 E.M.B.A. Class of 1991 Dinner/Reception Friday (cash bar)	___	x 30.00 =	_____
B.B.A. Alumni			
B.B.A. Picnic			
BBP Adults	___	x 10.00 =	_____
BBC Children 6-18	___	x 5.00 =	_____
BBUC Children under 6	___	x NC =	NC
Olde Guarde			
OGL Olde Guarde Luncheon Thursday	___	x 13.50 =	_____
Order of the White Jacket			
OWJL OWJ Luncheon Friday	___	x 18.00 =	_____

	No. persons	Cost per person	Total
School of Education			
SED School of Education Symposium Saturday	___	x NC =	NC
School of Education Picnic (Saturday)			
EDP Adult	___	x 10.00 =	_____
EDC Children 6-18	___	x 5.00 =	_____
EDUC Children under 6	___	x NC =	NC
Young Guarde			
YGP Young Guarde Party Saturday	___	x 5.00 =	_____

V. CLASS EVENTS

Class of 1937			
37H Hospitality Suite (BYOL) Thursday, Friday, Saturday	___	x 10.00 =	_____
Class of 1939			
39H Hospitality Suite (BYOL) Thursday, Friday, Saturday, Sunday	___	x 16.00 =	_____
39D Dinner Friday	___	x 36.00 =	_____
Classes of 1940 and 1941			
4041D Dinner Friday	___	x 35.00 =	_____
Class of 1948			
48S Supper Thursday	___	x 25.00 =	_____
48D Dinner Friday	___	x 48.00 =	_____
Class of 1953			
53H Hospitality Suite (BYOL)/Continental Breakfast Thursday, Friday, Saturday	___	x 15.00 =	_____
53D Dinner/Dance (cash bar) Friday	___	x 35.00 =	_____
Class of 1958			
58B Continental Breakfast Friday, Sunday	___	x 12.00 =	_____
58H Hospitality Suite (BYOL/cash bar) Thursday, Friday, Saturday	___	x 11.00 =	_____
58CBD Cocktail/Bufferet & Dancing (cash bar) Friday	___	x 45.00 =	_____

	No. persons	Cost per person	Total
Class of 1963			
63D Cocktail Party & Buffet Dinner Friday	___	x 30.00 =	_____
Class of 1968			
68H Hospitality Suite/Continental Breakfast Wednesday, Thursday, Friday, Saturday, Sunday	___	x 15.00 =	_____
68CH Cheese Shop Lunch Friday	___	x 6.00 =	_____
68CDD Cocktail Party & Dinner/Dance Friday	___	x 55.00 =	_____
Class of 1973			
73H Hospitality Suite Friday and Saturday	___	x 5.00 =	_____
73CP Class Party Friday	___	x 12.50 =	_____
Class of 1978			
78H Hospitality Suite/Coffee Service Thursday, Friday, Saturday, Sunday	___	x 15.00 =	_____
78CN Class Party (cash bar) Friday	___	x 15.00 =	_____
Class of 1983			
83CP Class Party (cash bar) Friday	___	x 16.93 =	_____
Class of 1988			
88CP Class Party (cash bar) Friday	___	x 15.00 =	_____
		Subtotal =	_____

VI. HOMECOMING MEMENTOS

CP	Class Photo:	No.	Cost	Total
	Class Year _____	___	x 12.00 =	_____
Homecoming T-shirt				
WMT	Adult (white, medium)	___	x 15.00 =	_____
WLT	Adult (white, large)	___	x 15.00 =	_____
WXLT	Adult (white, x-large)	___	x 15.00 =	_____
BMT	Adult (black, medium)	___	x 15.00 =	_____
BLT	Adult (black, large)	___	x 15.00 =	_____
BXLT	Adult (black, x-large)	___	x 15.00 =	_____
			Subtotal =	_____

VII. PAYMENT

All-Alumni Events	_____
Reunion Events	_____
Class Events	_____
Homecoming Mementos	_____
Registration fee: per form (not applicable if you are only ordering Homecoming Photos and/or T-shirts)	+ 5.00
Registration fee per form if registering after September 1	+ 10.00
Grand Total =	_____

VI. ACADEMIC FESTIVAL (FACULTY SYMPOSIA AND TOURS)

There is no charge for tickets to the symposia. However, tickets are required and must be picked up in the Homecoming Tent.

Please list in order of preference the symposia that you would most like to attend, using letter and number codes found in the Academic Festival listing on pages 8-9 (e.g., T1, F23, S3). Please make two choices per day. We will do our best to provide you and your guest with tickets to one symposium per day.

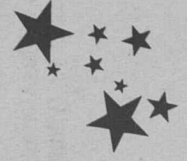
		First Choice		Second Choice	
		Time	Code	Time	Code
10/21	Self:				
	Guest:				
10/22	Self:				
	Guest:				
10/23	Self:				
	Guest:				

METHOD OF PAYMENT

_____ CHECK (Payable to Society of the Alumni)
 _____ Check No.
 _____ CHARGE
 _____ VISA _____ MasterCard
 ACCOUNT NO. _____
 Expires _____ month/year
 Signature _____



Accommodations



The following hotels still have space available for Homecoming '93. These hotels have been reserved through the Williamsburg Hotel and Motel Association and Colonial Williamsburg for alumni *not* celebrating class reunions. If this is a reunion year for you, please see more specific information under Class Events on page 5.

Instructions: If you are not in a reunion class, all reservations for designated William and Mary hotels (see list below) must be made centrally through the Williamsburg Hotel and Motel Association. The number is:

1-800/446-9244

Colonial Williamsburg has installed a **separate** 1-800 number for William and Mary's Homecoming. This 1-800 number will enable alumni to call Colonial Williamsburg's conference housing department directly. In order to make a reservation at any Colonial Williamsburg Property, call 1-800/231-4198.

PLEASE DO NOT CALL THESE HOTELS DIRECTLY!

When calling the Williamsburg Hotel and Motel Association, ask for the William and Mary 300th anniversary block. It will also facilitate your call if you have your credit card number ready along with your top three choices of hotels.

Reunion classes and various groups of alumni (law school, M.B.A., Alumni Band, Hulon Willis Association, for example) have designated hotels as their headquarters. For further details, see pages 3, 4 and 5.

Homecoming Hotels

Best Western Patrick Henry
York and Page Streets
\$99 single/double

Best Western Virginia Inn
900 Capital Landing Road
\$45 flat

Best Western Williamsburg
Route 60 East and 199
\$60 flat

Best Western Colonial Capitol
111 Penniman Road
\$60 flat

Carolynn Court
1446 Richmond Road
\$48 single/double

Econo Lodge Historic Area
1402 Richmond Road
\$60 single/double

George Washington Inn
500 Merrimac Trail
\$73 single/double

HoJo Inn
824 Capital Landing Road
\$55 single/double;
\$60 triple; \$65 quad

Holiday Inn Patriot
3032 Richmond Road
\$70 single; \$76 double

Holiday Inn Express
119 Bypass Road
\$69 flat

Kingsmill Resort and Conference Center
1010 Kingsmill Road
Guestroom \$132-\$167
One-bedroom suite \$199-\$225

Ramada Inn Historic
351 York Street
rooms \$99; suites \$140

Ramada Inn Williamsburg
5351 Richmond Road
\$60 single/double

Williamsburg Hilton
50 Kingsmill Road
\$120 single/double

Williamsburg Travelodge
1408 Richmond Road
\$60 single/double

Williamsburg Westpark Hotel
1600 Richmond Road
\$55 flat

Colonial Williamsburg
1-800-231-4198

Colonial Taverns
\$175 single/double

Williamsburg Inn
Main Building
\$275 single/double

Williamsburg Inn
Providence Wing
\$194 single/double

Williamsburg Lodge
South Wing
\$155 single/double

Williamsburg Lodge
Tazewell Wing
\$187 single/double

Williamsburg Lodge
West Wing
\$186 single/double

Homecoming 1993 Corporate Sponsors

The Society of the Alumni expresses its appreciation to the following corporate sponsors for their generosity and support of William and Mary's 300th Anniversary Homecoming

BUSCH GARDENS
WILLIAMSBURG, VA.

Daily Press

Prudential Home Mortgage

USAir
America's Most Frequent FlyerSM

CRESTAR

VIRGINIA POWER
The More You Know, The Better.™

In addition to the above corporate sponsors of Homecoming 1993, a number of other companies and businesses will support this year's celebration through gifts-in-kind or financial assistance. Please look for those sponsors in your Homecoming Weekend Guide, or listed on our display board in the Homecoming Tent throughout the weekend.

Celebrate

at

Busch Gardens!

Join alumni, faculty, students and friends for a giant, grand finale to Homecoming '93 at the

William and Mary 300th Anniversary Birthday Party

Hosted by Busch Gardens Williamsburg and sponsored by Anheuser-Busch Inc., St. Louis

Saturday, October 23
7-11 p.m.

Tickets limited to two (2) per alumni household.
First-come, first-served. See complete details on page 6.

Society of the Alumni
P.O. Box 2100, Williamsburg, VA 23187-2100

U.S. Postage
Paid
Non-Profit
Organization
Permit No. #304
Richmond, VA

Alumni Gazette

REGISTER BY AUGUST 1
TO BE ELIGIBLE FOR
USAir DRAWING!

THE COLLEGE OF WILLIAM AND MARY

TERCENTENARY HOMECOMING SUPPLEMENT

MAY/JUNE 1993

