


The Colonial Echo



Digitized by the Internet Archive
in 2010 with funding from
LYRASIS members and Sloan Foundation



Winter Morning Service at Bruton Parish Church

THE COLONIAL ECHO

Being a Year Book Published by the Clafs
of 1933 at the College of William and
Mary of Williamsburg, Virginia

A Miscellaneous Record of Events which
have Occurred during the Year 1932-33
and which are of Interest to
the Student Body

VOLUME THIRTY-ONE



Printed by Brown-Morrison Company on Main
Street in Lynchburg, Virginia, for the Students

MCMXXXIII

84347

Copyright 1933
A. FRED EILERS, Editor-in-Chief
RALPH W. MURRAY, Business Manager



FOREWORD

AN echo of the past, a reincarnation of the lazy, beautiful Williamsburg of Colonial days, surrounds us here. It is particularly suitable then that we fit this, the thirty-first volume of *The Colonial Echo*, to the things about us. Even the name suggests the theme, that of the rebirth of Colonial Williamsburg.

With this in mind, the staff has conscientiously tried to build up a book which, wherever possible, has been modeled after those printed by William Parkes, a famous printer of Williamsburg in the eighteenth century. The cover, the paper, the typeface, the block-prints, all belong to that colorful period when Washington, Jefferson and Franklin linked their names with that of William and Mary.

It is regretted that the mechanical limitations imposed by photo-engraving prohibit us from using the same paper and type throughout the book, but, since this could not be done, we have tried to match all sections as closely as possible.

The division pages of this volume of *The Colonial Echo* are interesting. They are reproduced directly from blocks to the pages in this book, in just the fashion that William Parkes or Benjamin Franklin would have

done them. These blocks, a separate one for each color in the print, were cut expressly for this book by the well-known artist, Charles W. Smith, who devoted much time and research in their preparation.

It is the hope of the staff that we have captured, even to a small extent, some of the calm beauty which made Williamsburg famous throughout the eighteenth century world.

We, then, present this thirty-first volume of *The Colonial Echo* to you as a reminder of the days when you watched Williamsburg come back out of the past—for a glorious future.



AN INTIMATE HISTORY OF THE COLLEGE

WILLIAM AND MARY glories in her past, and for good reason. Founded in the dim days of early colonization, this ancient institution has been responsible for the education of many Revolutionary leaders and statesmen, men to whom much of the credit for the pioneering progress of this country may be attributed. This great educational work of the college did not cease in those Colonial days, but it has continued, throughout generations, to offer educational advantages and inspiration to many famous men in American history.

The Main Building, supposedly designed, according to musty records, by that illustrious gentleman, Sir Christopher Wren, has been the nucleus of the College. It has served in many capacities during the many decades of its existence, having been used as the Capitol Building for the Colonies, as a hospital for wounded soldiers, and, as a tunnel from its cellar to a small creek a mile away would indicate, as a fort against Indian invasion.

The ideals, principles and habits of the Colonial student did not differ to any great extent from those of the student of today. Thomas Jefferson did not pay his board bill for two years and James Monroe, of Doctrine fame, had a squabble with a stewardess over lost laundry and her partiality to a nephew in the matter of candle allowance. Failing to exhibit the strong sense of assurance which characterized the gentleman

in later years, Monroe dropped the case when the ired lady hired a lawyer to defend her name. Complaints about this and that, food in particular, were often voiced by the Jeffersons and Madisons of that time.

The statue of Lord Botetourt, now standing on the William and Mary campus in front of the Main Building, can most certainly be linked with the College history. Purchased with funds raised by popular subscription, this memorial was exposed to the Colonial public in an atmosphere of ill feeling. A gentleman in London, irked by the lack of courtesy on the part of the Colonists in not extending a word of appreciation to him for the trouble he had taken in having the statue crated and shipped to the States from London, complained by letter to his son, who was living in Yorktown. He was in quite a huff about the matter and made his displeasure known in no uncertain fashion.

This was only the beginning of trouble for old Lord Botetourt. Not long after the statue had been erected in the Capitol Building, the Revolution began. More musty records show that the Colonists demonstrated the fact that they didn't appreciate Great Britain or, even in marble form, anything British. This feeling they conclusively proved by knocking off the arm and head from the Lord's statue. Today, close observance will reveal how the head has been joined to the statue.

From the Capitol Building the statue was taken to the Duke of Gloucester Street and from there to its present position, where it suffers new indignities each year, standing as a grotesque old man without a nose and a hand, but a loved old man nevertheless.

This history of the school is filled with interesting things which have happened in an unusual past, but we have not space to tell of them. Let it be sufficient to say that we believe its delightful past is but an indication of its glorious future.

IN MEMORIAM

MCMXXXII



Dr. Van F. Garrett

Class of 1866

Graham B. Nichol

Class of 1896

John William Rice

Class of 1872

I. D. Akers

Class of 1921

Rev. M. S. Kennedy

Class of 1877

Nelson B. Peebles

Class of 1928

Charles W. Coleman

Class of 1878

Henry Ball

Class of 1928

Dr. J. C. Lumpkin

Class of 1891

Mrs. Ruth A. Pointer

Class of 1931

William Hatcher Jones

Class of 1894

George Stewart

Class of 1932

George Cole Scott

Class of 1894

W. S. Benton

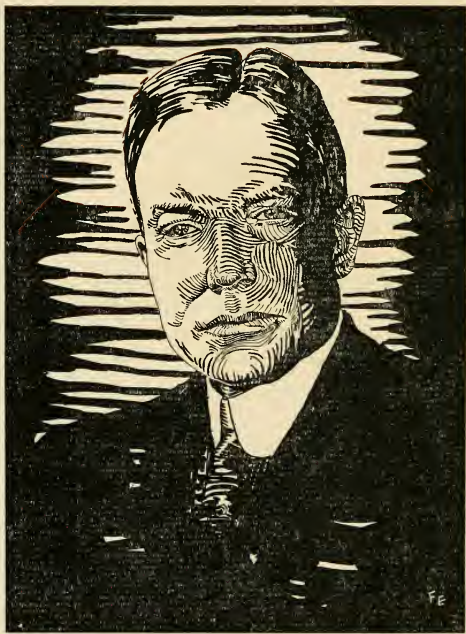
Class of 1932

Dr. E. C. S. Taliaferro

Class of 1895

Charles McNeil Mott

Class of 1933



JOHN DAVISON ROCKEFELLER, Jr.

DEDICATION

We, the Members of the Staff of The Colonial Echo, dedicate this, the thirty-first volume of The Colonial Echo, to John Davison Rockefeller, Jr., as an expression of the appreciation we feel for what he has done in so generously restoring the College and Williamsburg to their ancient beauty.



DR. JULIAN ALVIN CARROLL CHANDLER

DR. J. A. C. CHANDLER
Ph.D., LL.D.

President of the College of William and Mary in Virginia since the year 1919, and under whose administration the College has progressed as never before in its long existence.



DR. KREMER J. HOKE

DR. KREMER J. HOKE
M.A., Ph.D.

Dean of the College and Professor of Education since 1920. While filling these positions he has aided materially in gaining for the College the place she now holds among educational institutions.



BOARD OF VISITORS

JAMES H. DILLARD . . . Rector

JOHN STEWART BRYAN . Vice-Rector



The Visitors of the College

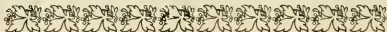
A. H. Foreman . . . Norfolk, Va.

Charles Hutchinson . . . Boydton, Va.

Miss Lula D. Metz . . . Manassas, Va.

Miss Gabriella Page . . . Richmond, Va.

John Archer Wilson . . . Roanoke, Va.



CONTENTS

INTRODUCTION

THE COLLEGE

C L A S S E S

A T H L E T I C S

F E A T U R E S

F R A T E R N I T I E S

A C T I V I T I E S

ADMINISTRATION

J. A. C. CHANDLER, President of the College

I. E. HARRIS, Treasurer

HERBERT L. BRIDGES, Registrar

K. J. HOKE, Dean of the College

GRACE WARREN LANDRUM, Dean of Women

E. G. SWEM, Librarian

D. J. KING, College Physician

BESSIE P. TAYLOR, Social Director of Women

W. P. COOK, Steward of the College Refectory

KATHLEEN ALSOP, Secretary to the President

FACULTY

KATHLEEN ALSOP

Instructor in Shorthand and Typing

MARTHA BARKSDALE, M. A.

Assistant Professor of Physical Education

RACHEL BLACK

Instructor in Modern Languages

D. J. BLOCKER, A.M., B.D., D.D.

Assistant Professor of Psychology and Sociology

MERRILL BROWN

Instructor in Public Speaking

MRS. J. S. BROCKENBROUGH

Assistant Professor of Library Science

RUTH BUDD

Instructor in Piano

ELEANOR CALKINS, A.B.

Instructor in Mathematics Department

J. D. CARTER

Doctorate University of Toulouse

Associate Professor of Modern Languages

JOSEPH CHANDLER, B.S., M.A.

Assistant Professor of Physical Education

ETHEL CHILDRESS

Instructor in Mathematics

G. GLENWOOD CLARK, M.A.

Assistant Professor of English and Journalism

HIBBERT D. COREY, M.A.

Assistant Professor of Business Administration

THEODORE SULLIVAN COX, A.B., LL.B.

Professor of Law

ANNE L. CROXTON, B.S.

Instructor in Biology

LILLIAN A. CUMMINGS, M.A.

Professor of Home Economics

GIORGI CURTI

Instructor in Modern Languages

DONALD W. DAVIS, A.B., Ph.D.

Professor of Biology

ZOE ANNA DAVIS

Instructor in Biblical Literature

A. WILLIS DEARING, Ph.D.

Associate Professor of Chemistry

JOHN R. FISHER, Ph.D.

Professor of Modern Languages

ROY J. GEIGER, Ph.D.

Professor of Philosophy

WAYNE F. GIBBS, M.S.

Associate Professor of Business

C. DUNCAN GREGORY, M.A.

Associate Professor of Mathematics

GEORGE E. GREGORY, A.B.

Instructor of English

ROBERT M. GRIFFEY

Instructor in Violin

WILLIAM G. GUY, Ph.D., M.A.

Professor of Chemistry

CHARLES E. HAGBERG

Instructor of Government

EMILY M. HALL, A.B., M.A.

Instructor in English

A. EDWARD HARVEY, Ph.D.

Associate Professor of Modern Languages

INGA OLLA HELSETH, Ph.D.

Professor of Education

M. TEAGUE HIPPS, B.D.

Director of Religious Activities

KREMER J. HOKE, Ph.D.

Professor of Education

L. VAUGHAN HOWARD, M.A.

Associate Professor of Government

ALTHEA HUNT, M.A.

Assistant Professor of English

LEE W. IRWIN

Lecturer in Biblical Literature

VICTOR ITTURALDE, Ph.D.

Assistant Professor of Modern Languages

JESS H. JACKSON, Ph.D.

Professor of English

FACULTY

- J. R. L. JOHNSON, A.B., M.A.
Professor of English
- TUCKER JONES, B.S.
Professor of Physical Education
- W. MELVILLE JONES, M.A.
Associate Professor of English
- H. C. KREBS, M.A.
Associate Professor of Education
- J. WILFRED LAMBERT, B.A.
Instructor in Psychology
- GRACE WARREN LANDRUM, Ph.D.
Professor of English
- J. PAUL LEONARD, Ph.D.
Professor of Education
- JOHN LEWIS
Librarian in Jurisprudence Department
- B. D. McCARY
Doctorate University of Toulouse
Associate Professor of Modern Languages
- ROBERT C. McCLELLAN, B.A.
Instructor in Ancient Languages
- CHARLES F. MARSH, Ph.D.
Associate Professor of Business Administration
- AGNES MELGAARD, B.S.
Professor of Art
- WILLIAM W. MERRYMON, Ph.D.
Associate Professor of Physics
- RICHARD L. MORTON, M.A., Ph.D.
Professor of History
- BEN T. PAINTER
Instructor in Biology
- JAMES E. PATE, Ph.D.
Professor of Government
- PETER PAUL PEEBLES, M.A., LL.M.
Associate Professor of Law
- LT.-COL. EARL C. POPP
Instructor of Aviation
- RHODA PRATT
Instructor of Modern Languages
- ROBERT G. ROBB, B.A., B.S., M.A.
Professor of Chemistry
- MARGUERITE WYNNE ROBERTS
Assistant Professor of Physical Education
- BEULAH RUSSELL, A.M.
Associate Professor of Mathematics
- GEORGE M. SMALL, M.B.
Associate Professor of Music
- LYDIA HELENE SOLOTAREFF
Instructor in Modern Languages
- SHIRLEY D. SOUTHWORTH, Ph.D.
Professor of Economics
- JOHN M. STETSON, B.A., Ph.D.
Professor of Mathematics
- JEAN J. STEWART, M.A.
Associate Professor of Home Economics
- J. T. STUBBS, A.B., A.M.
Associate Professor of History
- ALBION G. TAYLOR, Ph.D.
Professor of Economics
- R. L. TAYLOR, Sc.D.
Assistant Professor of Biology
- ALICE TREVETT
Instructor in Secretarial Science
- MAURICE L. TYLER
Instructor in Voice
- A. PELZER WAGENER, Ph.D.
Professor of Ancient Languages
- HELEN FOSS WEEKS, Ph.D.
Professor of Education
- EDWIN E. WILLOUGHBY
Professor Library Science
- ALMA WILKIN, M.A.
Assistant Professor of Home Economics
- D. W. WOODBRIDGE, J.D.
Associate Professor of Law
- R. C. YOUNG, Ph.D.
Professor of Physics



The Gazette Makes Its First Appearance, 1736



THE MAIN BUILDING

SENIORS



MARGARET M. CLARK
Vice-President



CHARLES P. McCURDY
President



FLORA E. WILLCOX
Secretary

SENIOR CLASS HISTORY

TO begin with the latter part of our years here, the above class officers, Charles McCurdy, President; Margaret Clark, Vice-President, and Flora Wilcox, Secretary, were elected in the Spring of 1932.

The usual short summary does not seem to do justice to the important events which happen in college years. With this in mind, the staff has tried to take the everyday things that have happened on the campus since September, 1929, and arrange them in an orderly fashion.

If you will begin here and follow the events through, we are sure that your memory will elaborate upon our short facts, and you will live the years again. Try it.



ELMA LOUISE ADAMS

A.B.

Roxbury, Virginia

Y. W. C. A.; J. Leslie Hall
Literary Society; Clayton Grimes
Biological Club, '30



LILLIAN VIRGINIA ALDERSON

A.B.

Hopewell, Virginia

J. Leslie Hall Literary Society;
Y. W. C. A.; Senior Life Saving
Corps, 1931-32

1929-'30. This was a year of new things including us, the campus post-office, and a lot of scaffolding where now stands the biggest part of the library and right away a



ELLA LEE ALLISON

B.S.

Delton, Virginia

Transfer from Harrisonburg
Teachers College; G. G. G.;
German Club; J. Leslie Hall
Literary Society; Y. W. C. A.



GLADYS I. ANDERSON

B.S.

Petersburg, Virginia

German Club; Los Quixotescos;
J. Leslie Hall

lot of freshman rules the idea of us, big shots in high
school, wearing those crazy hats and things and then,
supreme court. Remember it? Who doesn't, especially Rosey



KATHERINE ANDREWS

B.S.

Philadelphia, Pennsylvania

Transfer from Wellesley College;
Y. W. C. A.; Clayton Grimes
Biological Club



OTIS T. BRADLEY

B.A.

Ringgold, Virginia

Flat Hat; Freshman Basketball;
Varsity Baseball; Varsity Club;
Phoenix Literary Society

Ryan as magister The Pi Phi's, Kappa Deltas, Alpha
Chis, and Kappas all got settled down to their present residences,
while the Chi Omegas had the South-Tyler annex and the



MABEL ELIZABETH APGAR

A.B.

East Orange, New Jersey

Transfer from Beaver College,
Pennsylvania; Varsity Glee Club
'31 '32 '33; J. Leslie Hall Liter-
ary Society; Flat Hat; Psycholo-
gy-Philosophy Seminar;
Y. W. C. A.



MARION LUCETTA BANKS

B.A.

St. Petersburg, Florida

Transfer from St. Petersburg
Junior College; Kappa Kappa
Gamma; Chi Delta Phi; Flat
Hat; Literary Magazine; G. G.
G.; "Pierot's Mother"

Tri Deltas lived in that old frame building on Richmond
Road wonder if anyone ever guessed it might burn up
sometime? Barret Roberts joined the Flat Hat staff in



HAROLD LEE BARNES

B.S.

Onancock, Virginia

Theta Chi Delta; Phi Sigma



MAMIE BARNEY

B.A.

Petersburg, Virginia

J. Leslie Hall; Le Cercle Fran-
cais; Y. W. C. A.

their new offices in Citizenship Varsity was having a
pretty fair season except for losses to V. P. I. and Navy, but boy,
what a freshman team Halligan, LaCroix, and Roberts



FRANCES E. BECKERLE

B.A.

Wilmington, Delaware

Alpha Chi Omega; Kappa Delta
Pi; French Club; Euclid Club;
J. Leslie Hall Literary Society;
Y. W. C. A.; German Club;
K. O. B.



FRANCES BELL

B.A.

Suffolk, Virginia

Chi Omega; Music Chairman
Y. W. C. A.; Glee Club; Flat
Hat Staff; Colonial Echo Staff

looked like they were headed for the up and up freshman
girls were commended for their spirit at the games, while the
men were accused of being snooty there's no doubt who



GEORGIA BENNETT

B.A.

Richmond, Virginia

Alpha Chi Omega; Chi Delta Phi; Mortar Board; Phi Kappa Phi; Sophomore Tribunal; Flat Hat Staff; Literary Critic of J. Leslie Hall Literary Society; Literary Magazine Staff; President of Chi Delta Phi; Psychology-Philosophy Club; Phi Beta Kappa Scholarship, '30, '31, '32



FRANCES ELEANOR BERGER

B.A.

Drakes Branch, Virginia

Kappa Delta Pi; History Club; Euclid Club; J. Leslie Hall Literary Society; Y. W. C. A.

wrote that letter to the editor.
Chi Omega, Becky Lee, Theta, Virginia Jones, Kappa, and

Alice Edwards was pledged



J. ROLAND JOHNSON

B.S.

Transfer from University of Pittsburg; Sigma Nu; Cotillion Club



ELIZABETH JOHNSON BETTS

A.B.

Smithfield, Virginia

Transfer from Virginia Inter-
mont; Le Cercle Francais; J.
Leslie Hall Literary Society; Psy-
chology-Philosophy Seminar

Gladys Munroe and Margaret Kolb went Pi Phi Andy
Christianson nearly led the class with a 92.33 score on the first
reports The news of Doctor Pollard's election sent



RACHEL BLACK

B.A.

Washington, D. C.

Phi Mu; Phi Beta Kappa; Phi
Kappa Phi; President of Los
Quixotescos; K. O. B.



MELVIN D. BLUMENTHAL

B.A.

Hartford, Connecticut

Pi Lambda Phi; Freshman Foot-
ball; Band Vice-President; French
Club, Treasurer; Inter-Fraternity
Council

everyone steaming over to his house at about eleven-thirty
p. m. he made a speech and invited everyone to visit him



LENA MARTHA BOHANNON

B.A.

Luray, Virginia

Kappa Delta Pi; Le Cercle Fran-
cais; Clayton-Grimes Biological
Club; J. Leslie Hall Literary
Society; Y. W. C. A.



MAE BOSTICK

B.A.

Burkeville, Virginia

Transfer from Randolph-Macon
Woman's College

at the governor's mansion did you go?—I forgot the pass-
word women Ducs were tried and found guilty the



MARY PEYTON BOWYER

B.A.

Roanoke, Virginia

Eta Sigma Phi; Y. W. C. A.;
Choral Club



DOROTHY BOWMAN

B.A.

Hawthorne, New Jersey

International Relations Club

decision was in the bag
didn't burn very long

the S. P. E. house caught fire but
the team won the conference title



SUE BRITTLE

A. B.

Waverly, Virginia

Tau Kappa Alpha; Eta Sigma Phi; Women's Debate Council; Euclid Club; J. Leslie Hall Literary Society; Y. W. C. A.



ELIZABETH BRUNSTETTER

A. B.

Williamsport, Pennsylvania

Transfer from Dickinson Junior College; Tri Delta; Theta Alpha Phi; Dramatic Club; W. & M. Players; German Club; K. O. B.; Y. W. C. A.

by trimming Richmond and Hampden-Sydney
Maxey copped high scoring honors with 93 points

Red
Bronchi's



LINDA MAE BROWN

B.A.

Richmond, Virginia

Transfer from Richmond Division,
College of William and Mary



BENJAMIN R. BRUNER

B.L.

Portsmouth, Virginia

B.A., College of William and
Mary; Phi Kappa Phi; Wythe
Law Club; Chancellor; West
Publishing Company Prize

trip by auto to South America began to look like a sure
thing and ahaah, a long Christmas holiday while the



RUTH LOUISE BUIST

B.A.

Fort Wayne, Indiana

Transfer from Sullins College; J.
Leslie Hall Literary Society; Le
Cercle Francais; Psychology-
Philosophy Seminar



B. P. BURROW

B.A.

Disputanta, Virginia

Sigma Nu; Wythe Law Club;
Inter-Fraternity Council

dining hall was being repaired
and were they ever tough babies

back for our first exams,
124 men were pledged



MARY BUTTERFIELD

B.S.

Washington, D. C.

Phi Mu; Women's Honor Council
'31-'33; Sophomore Tribunal;
Art Club '29-'30; German Club;
K. O. B.; Y. W. C. A.



ELLASUE CARR

B.S. OF HOME EC.

Roanoke, Virginia

Edith Baer Club; German Club;
G. G. G.; Y. W. C. A.

to frats
the campus

the new semester brought Alpha Phi Delta to
also study-hall and the five and out you go



RAYMOND J. CARROLL

B.S.

Norfolk, Virginia

Theta Delta Chi; Omicron Delta Kappa; Flat Hat Club Society, President; "13" Club, Secretary-Treasurer; Athletic Council, Secretary-Treasurer; Gibbons Club, President; Manager Baseball; Business Manager Literary Magazine; Cotillion Club; Philomatheon Literary Society; Inter-fraternity Council; Freshman Football



KATHERINE CARTER

B.A.

Dry Fork, Virginia

Averett College, Danville, Virginia; J. Leslie Hall Literary Society; Captain Senior Baseball

cut system ho hum, another conference champion-
ship basketball this time Came Saturday, March



CARLTON J. CASEY

B.A.

Williamsburg, Virginia

Pi Kappa Alpha; Theta Alpha
Phi; Dramatic Club; Cotillion
Club; Flat Hat Staff '30-31,
'31-'32



WILLIAM J. CASEY

B.A.

Roxbury, Massachusetts

Sigma Phi Epsilon; Gibbons Club;
Euclid Club; Freshman Track
Team; Varsity Track Team;
Swimming Team, Captain '30-
'31, '31-'32, '32-'33

15, 1930, and boy, oh boy, what a fire it burned the top
off Rogers Hall, and have you ever seen anything funnier than

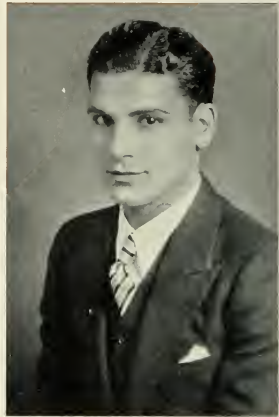


ARMOND J. CAPLAN

B.S.

Portsmouth, Virginia

Phi Alpha; Omicron Delta Kappa; President Inter-Fraternity Council, Manager Varsity Basketball; Vice-President Junior Class; Athletic Council; Freshman Football



EDWARD JAMES COPPOLA

B.S.

Brooklyn, New York

Alpha Phi Delta; Chi Beta Phi; Virginia Academy of Science

ten hosemen all ready to squirt it out and trickle, only about an
eyefull of water came dribbling out the nozzle? then the



M. ELIZABETH CHAMBERS

B.A.

Woodford, Virginia

Pi Beta Phi; Dramatic Club;
G. G. G.; Judicial Council;
President of Barrett Hall; Colonial
Echo Staff; Y. W. C. A. '29;
German Club; Costume Chair-
man, Senior Play



ANNIE A. CHANDLER

B.A.

Church Road, Virginia

Averett College, Danville, Vir-
ginia; Le Cercle Francais; Vice-
President of Baptist S. S.; J. Leslie
Hall Literary Society

measles and the mumps, and oh my jaws
Bedouins made music for our first formals

Pete Graully's
ye olde shagge



NANNIE GORDON CHRISTIAN

B.A.

Roxbury, Virginia

Kappa Delta Pi; J. Leslie Hall
Literary Society; Y. W. C. A.;
Euclid Club; Clayton-Grimes
Biological Club, '30



ANDREW J. CHRISTENSEN

B.S.

Hopewell, Virginia

Sigma Pi; Omicron Delta Kappa,
Secretary-Treasurer; Kappa Phi
Kappa, Vice-President; Chi Beta
Phi; Freshman Football; Fresh-
man Baseball; Varsity Baseball,
'30, '31, '32; Captain '32; Presi-
dent Student Body; Honor Coun-
cil; Varsity Club; Inter-Fraternity
Council '33

nearly shook the decorations down The Glider Club
contacted an obstacle it didn't hurt the Club, but nearly



MARGARET MACATEE CLARK

B.A.

Washington, D. C.

Kappa Alpha Theta; Vice-President of Senior Class; Y. W. C. A.; J. Leslie Hall Literary Society; German Club; G. G. G.;
Judicial Council



JOSEPH W. COHRON

B.A.

Stuarts Draft, Virginia

Phi Kappa Tau; Theta Alpha Phi; Philomatheon Literary Society, Vice-President, '30-'31;
Dramatic Club

ruined the Glider the Harvard track squad arrived for
Spring training with those sugar-bowl hair cuts our team



LIZINKA EWELL CRAWFORD

B.A.

Williamsburg, Virginia

North Carolina College for Women; Kappa Kappa Gamma; Y. W. C. A.; J. Leslie Hall Literary Society; German Club; K. O. B.



JOSEPH N. CRIDLIN

B.A.

Jonesville, Virginia

Sigma Pi; Inter-Fraternity Council; Cotillion Club; Philomatheon Literary Society

was certainly innocent of scalping them that season
Katz played for co-eds, they tell me market report

Al



LYNDA BELL CROMWELL

B.A.

Norfolk, Virginia

Randolph-Macon Woman's College; Norfolk Division of William and Mary



MILDRED CROSS

B.A.

Norfolk, Virginia

History Club, President; Y. W. C. A.

politics—common falls to new low in Abbitt-Muldowney election squabble Muldowney finally won on a second election,



CATHERINE CUBBERLY

B.S.

Norfolk, Virginia

Phi Mu; Mortar Board; Phi Kappa Phi, H2E; President Women's Student Government; Vice-President Women's Student Government; Treasurer Women's Student Government; Secretary Board of Control; Varsity Hockey; Freshman Basketball; Monogram Club; President Freshman Y. W. C. A. Cabinet; Clayton-Grimes Biological Society; Literary Society



MARGARET CUSHWA

A.B.

Blackstone, Virginia

Transfer from Blackstone College for Girls; J. Leslie Hall Literary Society; K. O. B.

Senior History Continued
On Next Page



DRUSILLA DAVIS

B.S.

Warrenton, Virginia

Kappa Alpha Theta; Edith Baer
Club; J. Leslie Hall Literary So-
ciety; Glee Club; Y. W. C. A.;
German Club; G. G. G.



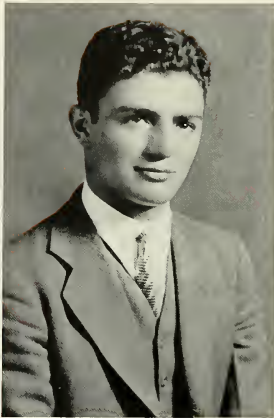
NANCY DAVIS

A.B.

Williamsburg, Virginia

Kappa Kappa Gamma; German
Club; K. O. B.; Y. W. C. A.;
Glee Club

the first being declared a dud for all the re-counts the
baseballers won another championship remember sitting



JOSEPH DeGANGE

B.S.

New London, Connecticut

Alpha Phi Delta; Chi Beta Phi,
Secretary; Flat Hat Club Society;
Senior-Sophomore Tribunal, Presi-
dent; Band; Clayton-Grimes Bio-
logical Club; Gibbons Club



HELEN DENNY

B.A.

St. Petersburg, Florida

St. Petersburg Junior College;
Art Club

out in those stands on warm spring afternoons? and the
girls in summer dresses again? Just fair finals topped off



DORCAS M. EDMISTER

B.S.

Richmond, Virginia

Richmond Division of William and
Mary



ALICE CHURCHILL EDWARDS

B.A.

Lynchburg, Virginia

Chi Omega; J. Leslie Hall Liter-
ary Society; German Club; G. G.
G.; Art Club; Y. W. C. A.;
Activity Editor of Colonial Echo

that year and
about college

home to the folks and to tell the gang all



ANNIE PAGE EDWARDS

B.S.

Sweet Hall, Virginia

State Teachers College, Harrison-
burg, Virginia; Euclid Club; Phi
Sigma



FRED EILERS

B.S.

Richmond, Virginia

Sigma Phi Epsilon; Alpha Kappa
Psi, Vice-President; Sigma Upsilon,
President; Flat Hat Staff;
Literary Magazine Staff; Editor
Colonial Echo, '33; Inter-Frater-
nity Council; "7" Society

1930-'31
tions to study

Back with a good coat of tan and resolu-
the tan lasted six weeks anyway the



MORRIS FRANCIS ELLIOTT

B.A.

Philadelphia, Pennsylvania

Sigma Phi Epsilon; Clayton-Grimes Biological Club; Assistant Business Manager Indian Handbook, '31; Track Manager, '32; Athletic Council; President Y. M. C. A.



IRA H. ERICKSON

B.S.

Apopka, Florida

Sigma Pi Sigma; Phi Kappa Phi

best looking freshmen girls in those sailor bonnets plans
for the Phi Beta Kappa Vergilian pageant called for Maurice



KATHERINE L. EVERHART

B.A.

Round Hill, Virginia

German Club; K. O. B.; Colonial
Echo Staff; Flat Hat Club So-
ciety; Clayton-Grimes Biological
Club



HELEN JEANNETTE FADDEN

B.A.

Newport News, Virginia

German Club; Gibbons Club; J.
Leslie Hall Literary Society

Berkwitz and Edgar Wiegand to be in leading roles the
Library was refurnished and the second floor reading-room



MARIE W. FRIES

B.S. IN PHYS. ED.

Winchester, Virginia

Kappa Delta Pi, Vice-President;
Phi Sigma, Treasurer; H2E Club,
President; Clayton-Grimes Bio-
logical Club; J. Leslie Hall Lit-
erary Society; Freshman Basket-
ball Team; Hockey Squad;
Monogram Club



GERTRUDE FROST

B.S.

Newport News, Virginia

Upsala College; Clayton-Grimes
Biological Club; J. Leslie Hall
Literary Society; Glee Club, '30,
'31; Basketball Squad, '30, '31;
Spanish Club, '30, '31

opened, thus relieving the Monday night jams also the
new \$75,000 infirmary was opened early rushing for



FRANCES R. GALE

B.A.

Tampa, Florida

Eta Sigma Phi; Kappa Delta Pi;
Los Quixotesos; J. Leslie Hall
Literary Society



MARY ANNE GALLAGHER

B.A.

Portsmouth, Virginia

Norfolk Division of William and
Mary; Gibbons Club; Eta Sigma
Phi

sorieties the Norfolk Branch was opened and Dr.
Hodges was in Who's Who Pat Murphy headed the



ANNA BETH GARRETT

B.A.

Clarendon, Virginia

Theta Alpha Phi; Dramatic Club,
'31, '32, '33; College Choir, '32,
'33; Women's Varsity Glee Club,
'31, '32; J. Leslie Hall Literary
Society, '32, '33; Y. W. C. A.;
German Club



ELIZABETH GARROW

B.A.

Denbigh, Virginia

Transfer from Averett College;
Kappa Delta; German Club;
K. O. B.

Freshmen Professor Jackson was learning how the other
half lives over in Denmark Bill Scott made the lone



CHARLES W. GILL

B.A.

Crozet, Virginia

Kappa Phi Kappa; Philomathean
Literary Society; Men's Debate
Council



ETHEL GOLDSTEIN

B.A.

Norfolk, Virginia

score against Navy and the Frosh were completing many
long passes remember, they did it for the next few years



MARY ALICE GRANTHAM

B.S.

Toano, Virginia

Transfer from Virginia Polytechnic Institute; Alpha Chi Omega; Y. W. C. A.; J. Leslie Hall Literary Society



JOSEPH WHITTEN GREGORY

B.S.

Martinsville, Virginia

Freshman Football, Varsity Football, '30, '31, '32; Varsity Club; Philomatheon Literary Society; Senior-Sophomore Tribunal

too? The Vergil celebration was presented Pathe
News 'n everything actors therein commented verily on



LUCIE GROSSMAN

B.A.

Petersburg, Virginia

Delta Delta Delta; Vice-President of Mortar Board; Kappa Delta Pi; History Club; Vice-President of German Club; K. O. B.; Indian Handbook Staff; Freshman Basketball Squad; Dramatics Club; Sophomore Tribunal; President of Pan-Hellenic Council; Flat Hat, Women's Managing Editor, Feature Editor, Associate Editor; Honor Council; Y. W. C. A. Cabinet; Women's Debate Council; Colonial Echo Staff



LOUISE GUNN

B.A.

Blackstone, Virginia

Eta Sigma Phi; Kappa Delta Pi; Euclid Club; J. Leslie Hall Literary Society; Y. W. C. A.

Senior History Continued
On Next Page



GOLDA GWYNN

B.A.

Hillsville, Virginia

Transfer from Radford State
Teachers College; Y. W. C. A.;
J. Leslie Hall Literary Society



LETTIE RANDOLPH HAIRSTON

B.A.

Roanoke, Virginia

Pi Beta Phi; German Club;
G. G. G.

how cold Hell was
nothing but bed-clothes, too

and the shameless guys out there in
the new band was organized





SHIRLEY A. HOUGH

B.S.

Roanoke, Virginia

Theta Chi Delta



THOMAS E. HARGRAVE

B.S.

Dinwiddie, Virginia

Theta Delta Chi; Varsity Baseball, Manager Football; Freshman Baseball; Varsity Club; Athletic Council

and going good at the games
all down except S. A. E.

Ralph Murray turned them
the last supreme court outdid



ETHEL EVANGELINE HART-
MAN

B.A.

Winchester, Virginia

Eta Sigma Phi, Vice-President;
Choral Club; Kappa Delta Phi;
Euclid Club, President, Treasurer;
Glee Club; Choir; J. Leslie Hall
Literary Society; Y. W. C. A.



VIRGINIA BRUCE HAUGH-
WOUT

B.A.

Williamsburg, Virginia

Tau Kappa Alpha; Los Quixotes-
cos; Women's Debate Council;
J. Leslie Hall Literary Society;
Y. W. C. A.

itself and got abolished just like that Halligan
did himself proud in the 13-13 tie against Harvard re-



ALICE B. HERZBERG

B.A.

New York City



JOHN VAUGHAN HOLBERTON

B.S.

Bowling Green, Virginia

Sigma Pi Sigma; Theta Chi Delta;
Chi Beta Phi; Philamathean Lit-
erary Society

member how they rushed those telegrams over to the freshman
game and how everybody got up on Sunday morning



NANCY ELIZABETH HOYLE

B.A.

Newport News, Virginia

Y. W. C. A.; J. Leslie Hall Literary Society; Clayton - Grimes Biological Club, Secretary; Le Cercle Francais, Vice-President



MARGARET CAMERON
HUDSON

B.A.

Richmond, Virginia

Kappa Delta Pi, Secretary; Los Quixotescos; Women's Debate, Manager; Judicial Council; J. Leslie Hall Literary Society, Secretary, President; Board of Control of Student Activities; President of Jefferson Hall;
Y. W. C. A.

and met the squad at the depot with the band? Col. Popp came down to Jamestown with the Riordon School and flying



FRANCIS WILLIAM HULL

B.S.

Hamden, Connecticut

Pi Kappa Alpha; Beta Alpha Psi, Vice - President; Gibbons Club, Secretary; Inter-Fraternity Council; Auditing Committee; President and Captain of the Band; Leader of College Dance Orchestra; President of Glee Club; Freshman Football



BARTON TRAVER HULSE

B.S.

Newark, New Jersey

Transfer from Rensselaer Polytechnic Institute; Delta Kappa Epsilon; Alpha Kappa Psi; Cotillion Club; Euclid Club; Aeronautics Club

instruction was offered to anyone with the ambition, body, brains, and bucks necessary . The 19-0 win (that cold



JEAN HYATT

A.B.

Norton, Virginia

Transfer from Stonewall Jackson
Colleg.; Chi Omega; German
Club; K. O. B.; J. Leslie Hall
Literary Society, Treasurer 1931,
1932, President 1932, 1933;
Y. W. C. A.



MARGARET BARBOUR IRVING

B.S.

Portsmouth, Virginia

H2E; President Women's Ath-
letic Association; Hockey Team
'29 '31 '32; Basketball Squad '31
'32; Tennis Squad '31; Baseball;
Track; Monogram Club; Ger-
man Club; Dance Club

Thanksgiving) was celebrated at formal dances the
inevitable co-eds had Jelly Leftwich up for some really hot



BERTHA JACOBI

A.B.

Richmond, Virginia

Transfer from Richmond Division
of College of William and Mary



MORTIMER G. JAFFEE

B.S.

New York, New York

Pi Kappa Alpha; President Beta
Alpha Psi; Treasurer Flat Hat
Club Society; Inter-Fraternity
Council '32 '33; Captain Golf
'31 '32; Manager Golf '32 '33;
Circulation Manager of Colonial
Echo

dances
years

another Christmas and back to the mines for mid-
phew, we pulled through another epidemic of



LOIS B. JENKINS

A.B.

Windsor, Virginia

Kappa Delta Pi; History Club, Secretary; Euclid Club; J. Leslie Hall Literary Society; Y. W. C. A.; B. S. U. Council; Freshman Debate Team



LELIA PAGE JOHNSON

A.B.

Danville, Virginia

Kappa Delta; Mortar Board, President; Kappa Delta Pi; Varsity Glee Club, Secretary-Treasurer '31 '32; Le Cercle Francais, President; Y. W. C. A., Cabinet; Panhellenic Council; German Club; K. O. B.

questions
house burned

The Tri-Delts had a slight difficulty
Kellison succeeded Bocock as

their
football



ROBERT B. JOHNSON

A.B.

Williamsburg, Virginia

Sigma Nu; Phi Delta Gamma;
Philomathean Literary Society,
President; Clayton-Grimes Bio-
logical Club; B. S. U. Council



VIRGINIA TUCKER JONES

B.A.

Williamsburg, Virginia

Kappa Kappa Gamma; G. G. G.;
German Club; Dramatic Club;
Palette Club; Gibbons Club,
Secretary-Treasurer

coach Both basketball teams had a successful year with
the Frosh winning ten out of eleven (Litwin starring) and



MARIE KEILEY

B.A.

Richmond, Virginia

German Club; G. G. G.; J. Leslie Hall Literary Society; Clayton-Grimes Biological Society; Los Quixotescos; Staff of Colonial Echo



CHARLOTTE KLOCKE

B.A.

Crewe, Virginia

Transfer from Randolph-Macon
Woman's College

Varsity hooping the conference title for their second successive year remember when Camels started using a celophane



ELINOR R. KNIGHTON

B.S.

St. Petersburg, Florida

Transfer from St. Petersburg
Junior College; Clayton-Grimes
Biological Club; Phi Sigma;
Euclid Club



AIME B. LaCROIX

B.S.

Baltic, Connecticut

Sigma Alpha Epsilon; Gibbons
Club, President; Football;
Baseball

wrapper?
ball team

and so through Spring with another good base-
Charlie Dunker and Grover Clay split the



LESLIE LEGUM

B.S.

Baltimore, Maryland

Pi Lambda Phi; Freshman Track;
Wranglers Club; Inter-Fraternity
Council, Vice-President



REBEKAH LEE

B.A.

Fredericksburg, Virginia

Kappa Alpha Theta; Sophomore
Tribunal; Colonial Echo Staff;
Indian Handbook Staff; President
of Palette Club; German Club;
K. O. B.; Y. W. C. A.

fraternity clique in a bitter fight, Charlie winning hands
down Clare (May Queen, College Humor pictures, etc.)

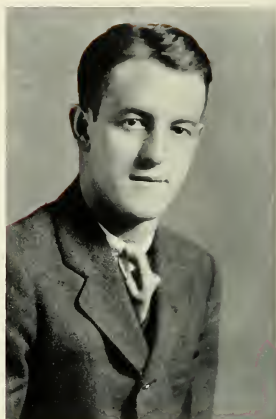


LORETTA LYBROOK

A.B.

Fincastle, Virginia

J. Leslie Hall Literary Society;
Y. W. C. A.



WALLACE LYNN

B.S.

Manassas, Virginia

Kappa Sigma; "13" Club; President Sophomore Class; President Junior Class; Colonial Echo Staff; Captain Varsity Basketball; Captain Freshman Basketball; Freshman Track; Varsity Track; Varsity Club

Hargrove was knocking them dead with the outstanding looks and personality of the campus Ham Simonds and Lit



WILLIAM T. MARSH

B.S.

Miskimon, Virginia

Sigma Pi; President, Kappa Phi
Kappa; President of Chi Beta Phi;
Vice-President of Theta Chi Del-
ta; Assistant Advertising Manager
of Flat Hat; Phoenix Literary
Society



CATHERINE MARTIN

B.A.

Norfolk, Virginia

J. Leslie Hall Literary Society;
Clayton-Grimes Biological Club
'30; French Club; Y. W. C. A.
'29

Upsur, in an interview with The Inquiring Reporter claim
no one on the campus can carry on an intelligent conversa-



FANNIE MARION MARTIN

B.S.

Richmond, Virginia

Transfer from Richmond Division
of College of William and Mary;
German Club



VI MARTIN

A.B.

New Castle, Virginia

Transfer from Martha Washing-
ton College; J. Leslie Hall Liter-
ary Society; Y. W. C. A.

tion speak for yourselves, boys Ham, by the way,
was elected Editor of the Flat Hat for the next year Dave



DOROTHY REBECCA
MATHEWS

A.B.

Portsmouth, Virginia

Transfer from Randolph-Macon
Woman's College; Le Cercle
Francais; German Club



DOUGLAS DU BOSE MAT-
THEW

B.S.

Norfolk, Virginia

Phi Sigma, President; Theta Chi
Delta, Secretary; Euclid Club,
Treasurer; Phoenix Literary
Society, Secretary

Harmon played for the best finals ever and home
again



HARRY WARFIELD MASON

1911

Edgewood, Virginia

Went to the same College
For Elliott Arnold, German
No. 100-1, W. C. L. German
Club



LEO ALLAN MINSKOFF

1911

New York, New York

Transfer from New York University
Phi Alpha, Tennis Team

1911-12 That Sahara summer of 1911 indeed well
we hope the "girl" to see you back, "delicious nice vacation"



WALTER B. HARRIS

Walter B. Harris
Senior Class
Member of the Student Body
and the Student Council
Member of the Y. M. C. A.
and the Y. W. C. A.

WALTER B. HARRIS

Walter B. Harris
Senior Class
Member of the Student Body
and the Student Council
Member of the Y. M. C. A.
and the Y. W. C. A.



Walter B. Harris
Senior Class
Member of the Student Body
and the Student Council
Member of the Y. M. C. A.
and the Y. W. C. A.



LUCIUS P. McELRATH

B.S.

Macon, Georgia

Sigma Alpha Epsilon; Cotillion Club; Dramatic Club; Assistant Manager of Track '30 '31 '32; Phoenix Literary Society



JOSEPH JAMES McPHERSON II

B.S.

Norfolk, Virginia

Transfer from Virginia Polytechnic Institute; Tau Kappa Alpha; Wranglers Club; Wythe Law Club; Flat Hat Staff; Debate Team; Phoenix Literary Society

Tau big center of interest—Yorktown swimming,
sure, but you remember, the Sesqui-Centennial Ed



EDWIN D. J. MEADE

B.S.

Babylon, Long Island, New York

Sigma Phi Epsilon; "13" Club; Vice - President Cotillion Club, 1932-33; Inter-Fraternity Council, 1932-33; Gibbons Club; Monogram Club; Freshman Football, Swimming and Track; Varsity Football 1930-32; Varsity Swimming 1930-32; Varsity Track, 1931-33; Captain Track, '33; Varsity Tennis, '32; Sports Editor Colonial Echo '33



LEAH LENOIR MILLER

B.S.

Williamsburg, Virginia

Senior History Continued
On Next Page



MARY LILLIAN MINIEHAM

A.B.

Roanoke, Virginia

Secretary-Treasurer International
Relations Club; J. Leslie Hall
Literary Society; Clayton-Grimes
Biological Club; Glee Club



GLADYS MADISON MONROE

B.S.

Savannah, Georgia

Pi Beta Phi; Theta Alpha Phi;
Phi Kappa Omicron; Dramatic
Club, Secretary '32, Vice-Presi-
dent '32-'33; Board of Control,
Secretary, '32-'33; Y. W. C. A.;
Freshman Cabinet, Vice-President

Wiegand, Don Gordon, and about a jillion others all dolled up
like honor cards That Navy game has been getting



HENRY VIRGINIUS MOORE

B.S.

Norfolk, Virginia

Transfer from DePauw University; Wrangler's Club



MARY ELIZABETH MOORE

B.S.

Wytheville, Virginia

Transfer from Virginia Inter-mont; Edith Baer Club; Phi Kappa Omicron, Corresponding Secretary; Clayton-Grimes Biological Club; J. Leslie Hall Literary Society

closer every time 6 to 13 this time, but we'll sink
them next year. Just you wait and see that trip to



WILLIAM F. MUELLER

B.S.

Jersey City, New Jersey

Transfer from Lehigh University;
Theta Delta Chi; Alpha Kappa
Psi



RALPH W. MURRAY

B.S.

Long Beach, California

Transfer from University of Red-
lands; Sigma Alpha Epsilon; Pres-
ident Men's Honor Council; Pres-
ident Omicron Delta Kappa; Bus-
iness Manager of The Colonial
Echo; President Wranglers'
Club; Intercollegiate Debate;
Tau Kappa Alpha

Annapolis, by the way, with the big welcome by the Mid-
dies—for our girls and the fracas following in Wash-



MARGARET CRISWELL NEAL

A.B.

Washington, D. C.

Phi Mu; Los Quixotescos; Euclid
Club; German Club; K. O. B.;
Y. W. C. A.



CAMILLA NELSON

B.S.

Richmond, Virginia

Vice-President of Phi Sigma;
Clayton-Grimes Biological Club;
Y. W. C. A. Cabinet 1931-32;
House President of Brown Hall;
Judicial Council; Euclid Club;
J. Leslie Hall Literary Society

ington, Baltimore, or where was I remember them, you
liar you? Ralph Murray and Don Douglas were both



MAUD HUNTER NEWBERRY

B.S.

Richmond, Virginia

Transfer from William and Mary
Extension of the Richmond Di-
vision; Kappa Delta Pi; Y. W.
C. A.; German Club



MARY THORN OEWEL

B.S.

Wytheville, Virginia

Edith Baer Club, '30-'31; Treas-
urer '31-'32; President '32-'33;
President Phi Kappa Omicron;
Clayton-Grimes Biological Club

honor-council representatives from us hmmm—juniors,
now remarks, ejaculations, and what-nots if the Literary



MARY ALMA PAINTER

B.S.

Williamsburg, Virginia

Edith Baer Club



NELLIE D. PHARR

A.B.

Newport News, Virginia

Magazine didn't blossom out with a bright cover, signed articles
by the big shots n'everything That Bolton-Murray



WALTER E. PIERCE

B.S.

Cumberland, Maryland

Transfer from Washington College; Sigma Alpha Epsilon; Omicron Delta Kappa; Wranglers' Club; Cotillion Club; Inter-collegiate Debate Council; Treasurer of Board of Control; Assistant Business Manager of 'The Flat Hat'; Colonial Echo Staff



EUGENE LAWRENCE PLENINGER

B.S.

Boston, Massachusetts

Transfer from Boston University and Northeastern University; Sigma Alpha Epsilon; President of Phi Delta Gamma; President of Theta Alpha Phi; "13" Club; Dramatic Club; Manager Tennis 1933; Colonial Echo Staff: Flat Hat Staff

combination was a pretty smooth pair in debating a
white fence was put around the colonial part of the



EDWARD PLUMMER

B.A.

Newport News, Virginia

Los Quixotescos; Philomathean
Literary Society; Production Staff
Dramatics, '31; Y. M. C. A.



ELIZABETH POTTERFIELD

B.A.

Lovettsville, Virginia

Euclid Club; Kappa Delta Pi;
Eta Sigma Phi; Phi Beta Kappa

campus maybe to keep the spooks in Tal Henry
brought a sure enough band up to play for Co-eds that



RHODA ELIZABETH PRATT

B.A.

Dedham, Massachusetts

Phi Mu; Dramatic Club; German
Club; G. G. G.



NINA EVALENA PRUETT

B.S.

Chatham, Virginia

Transfer from Averett College;
Edith Baer Club; J. Leslie Hall
Literary Society; Y. W. C. A.

made up a little for what Richmond did to the football
team the Theta Deltis moved into their new home out



ELIZABETH LEE PURNELL

B.S.

Scranton, Pennsylvania

J. Leslie Hall Literary Society;
Y. W. C. A.; Clayton-Grimes
Biological Club; Phi Sigma



WILLIAM W. RENSHAW

B.A.

Collingdale, Pennsylvania

Kappa Phi Kappa; Phi Delta
Gamma; Delta Mu Chi; Phoenix
Literary Society, President,
'32, '33

on Richmond Road Minnie Cole Savage earned her
private pilot's license out at Colonel Popp's William and Mary



ELIZABETH RIDOUT

B.S.

Roanoke, Virginia

Delta Delta Delta; Phi Kappa
Phi; Edith Baer Club, Secretary,
'31-'32, '32-'33; Y. W. C. A.



MARY VIRGINIA RIGG

B.A.

Alderson, West Virginia

Delta Delta Delta; Theta Alpha
Phi; President Women's Varsity
Glee Club; Dramatic Club, Sec-
retary; French Club, Secretary;
Music Council; Clayton-Grimes
Biological Club; J. Leslie Hall
Literary Society, '31; Y. W. C.
A., '31, '32; German Club;
K. O. B.

airport The new editor of the Flat Hat, which was
scooping the campus every week, was Barret Roberts Froggy



NETTIE VIRGINIA ROMM

B.A.

Norfolk, Virginia

Alpha Chi Omega; Mortar Board; Eta Sigma Phi; Monogram Club; French Club; Freshman Y. W. C. A. Cabinet; Y. W. C. A.; J. Leslie Hall Literary Society; Judicial Council; Class Historian; Honor Council, President; Women's Athletic Association, Secretary; Treasurer; Hockey Squad; Honorary Track Varsity; Manager Track; German Club;
K. O. B.



JEANNE ROSE

B.A.

Clarendon, Virginia

French Club; J. Leslie Hall Literary Society; Y. W. C. A.; Choral Club; Phi Beta Kappa

Senior History Continued
On Next Page



KATHERYN MINOR ROWE

A.B.

Bena, Virginia

Transfer from State Teachers College; History Club



LEON ALBERT RUBIN

B.S.

Hartford, Connecticut

Pi Lambda Phi; Theta Alpha Phi; Inter-Fraternity Council; Dramatic Society; Glee Club

Debordenave was chosen as student body president when Charlie Dunker left the fold, while Katherine Cubberly headed the



MARGARET ELIZABETH
RUTHERFORD

B.A.

Richmond, Virginia

Tau Kappa Alpha, Secretary-Treasurer; Women's Debate Council, Secretary; J. Leslie Hall Literary Society; Los Quixotescos; Y. W. C. A.



MINNIE COLE SAVAGE

B.A.

Williamsburg, Virginia

Transfer from Hollins College; Kappa Alpha Theta; Pan Hellenic Council; Colonial Echo Staff; Flight Club, Secretary; Indian Handbook Staff; German Club; K. O. B.

squaws mid-year exams came (as mid-years do), and were followed by the usual benders, all night poker games, also



WILLIAM H. SAVEDGE, JR.

B.S.

Wakefield, Virginia

Sigma Nu; Freshman Wrestling



MARGARET P. SCOTT

B.A.

Newport News, Virginia

Kappa Delta Pi; French Club; J.
Leslie Hall Literary Society

movies in Phi Beta . . . then came the strike . . . let's not
mention it, what do you say? . . . Halligan, Sheehan, and



CATHERINE FOSTER SELBY

B.S.

Akron, Ohio

Phi Sigma; German Club;
G. G. G.



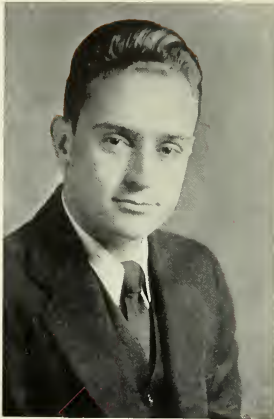
ANNE ELIZABETH SHAWEN

B.A.

Alta Vista, Virginia

Alpha Chi Omega; Phi Beta
Kappa; Mortar Board, Treasurer;
Phi Kappa Phi; Tau Kappa Al-
pha; Kappa Delta Pi; Eta Sigma
Phi; Los Quixotescos; Women's
Debate Council, President; Varsity
Women's Debate Team; Varsity
Glee Club; Y. W. C. A.; J. Les-
lie Hall Literary Society; Pan Hel-
lenic Council; German Club; G.
G. G.; Board of Control, '32-'33;
Corcoran Scholarship, '31-'32

Senior History Continued
On Next Page



C. S. SHERWOOD III

B.S.

Portsmouth, Virginia

Sigma Nu; Theta Chi Delta,
Treasurer-President; Chi Beta
Phi, Treasurer; Phi Kappa Phi;
Phi Gamma Delta; Euclid Club,
President; Phoenix Literary So-
ciety, Treasurer-Vice-President



VIRGINIA SHOWALTER

B.S.

Bellerose, New York

Phi Sigma, Secretary; Clayton-
Grimes Biological Club, Vice-
President; Le Cercle Francais

Carrol made the Thirteen Club and another spring-
time killdee's screeching through early morning mist



MINNIE MAY SHREVE

B.S.

West Falls Church, Virginia

Delta Delta Delta; Phi Sigma;
Mortar Board, Secretary; Judicial
Council, President; Glee Club;
Clayton-Grimes Biological Club;
Y. W. C. A.; German Club;
G. G. G., Secretary-Treasurer;
Flat Hat Staff



ESTHER SILVERSTEIN

B.S.

Richmond, Virginia

Euclid Club; Flat Hat Staff; In-
ternational Relations Club

gave 'way to warmth, green-smelling things, and ice cream
cones away in somebody's car for a swim the



JANET SIMES

B.A.

East Moriches, Long Island, New York

Monogram Club; Varsity Tennis;
Captain-Manager Tennis; Ger-
man Club; Auditing Committee



ANNE MARJORIE SMITH

B.A.

Norfolk, Virginia

Transfer from Randolph-Macon
Woman's College; Phi Mu; Ger-
man Club; K. O. B.; Le Cercle
Francais

devil with classes
swell in her regalia

Lee Chewning as May Queen looked
Doug Hubard was elected presi-



ELIZABETH FAUNTLEROY
SMITH

B.A.

Denbigh, Virginia

Le Cercle Francais; Clayton-
Grimes Biological Club; J. Leslie
Hall Literary Society;
Y. W. C. A.



MARGARET POST SMITH

B.A.

Newport News, Virginia

J. Leslie Hall Literary Society;
French Club; Y. W. C. A.

dent of the almost defunct Cotillion Club
they got for giving such good, but expensive dances

that's what
Jaffee



JOHN SAKOKINI

B.S.

Norfolk, Virginia

Freshman Football



LOTA J. SPENCE

B.A.

Norfolk, Virginia

Transfer from Norfolk Division
of College of William and Mary;
Gamma Phi Beta; Kappa Delta
Pi; Tau Kappa Alpha, Vice-
President; Women's Debate
Council, Vice-President; Varsity
Debate Team; German Club;
K. O. B.; B. S. U. Council;
Flat Hat Staff

took the northern trip with the golf team and showed the boys
up there a thing or three about birdies and eagles Good



LIDA SOLOTAREFF

B.S.

Paris, France

Transfer from Lycee Fenelon and Sorbonne (Paris); Instructor in French; Dance Club



HERBERT SPENCER

B.S.

Newport News, Virginia

Sigma Alpha Epsilon; Beta Alpha Psi

old Andy Christanson followed in the line of Wilcox, Mullowney, Dunker, and Debordenave and became the future



CLARA SWARTZ

A.B.

Charlottesville, Virginia



JOSEPH D. SCHENCK

A.B.

New York, New York

Transfer from Lehigh University;
Phi Lambda Phi; Fencing Team;
Wranglers' Club; Student in
Aeronautics

president of the student body we were practically
seniors Finals in the rain with Paul Tremain, board the
train, and home again



ELIZABETH FALLIN SQUIRES

B.A.

Irvington, Virginia

Clayton-Grimes Biological Club;
Euclid Club; J. Leslie Hall Lit-
erary Society, Y. W. C. A.



HELEN STUDZ

B.S.

Baltimore, Maryland

Hockey Squad; Basketball Squad;
Monogram Club

1932-'33
stretch

And now we round into the home
seniors, we are now, with the most fun and the



MARGARET E. THOMPSON

B.A.

Hampton, Virginia

Alpha Chi Omega; French Club;
J. Leslie Hall Literary Society;
Y. W. C. A.; German Club;
K. O. B.



ELEANOR TOWERS

B.A.

Denton, Maryland

Transfer from Bradford Junior
College; Phi Mu; German Club;
Y. W. C. A.; J. Leslie Hall
Literary Society

hardest work of any year just coming up look around,
now—isn't it phenomenal how everyone has grown up right
before your very eyes? you, too Gamma Phi



BERMA UNDERWOOD

B.S.

Norfolk, Virginia

Transfer from Norfolk Division
William and Mary College, and
from Georgia State College



SUMNER H. WATERS

B.S.

Great Neck, Long Island, New York

Lambda Chi Alpha; Vice-Presi-
dent Omicron Delta Kappa; Presi-
dent Alpha Kappa Psi; Phi Kappa
Phi; Vice-President Flat Hat
Club; Senior-Sophomore Tribu-
nal; Golf Team

Beta, one of the better sisterhoods is being established on the
campus they have the old Sigma Nu house, and may
they never see those pink elephants that live in the key-



ELLEN LAMAR THOMAS

B.A.

St. Petersburg, Florida

Transfer from St. Petersburg
Junior College; Chi Delta Phi;
Los Quixotescos



MILDRED W. WALLACE

B.A.

Wallaceton, Virginia

Phi Beta Kappa; Phi Kappa Phi;
Palette Club; Euclid Club

holes Didn't I tell you so?—we beat Navy and
W. & L. and V. M. I., too those Spiders, though, need
a good squashing to hear the dance orchestra you'd



MARION ELIZABETH WATERS

B.S.

Highland Springs, Virginia

Transfer from Richmond Division
College of William and Mary



MAUD CAMERON WEAVER

B.S.

Gloucester, Virginia

Delta Delta Delta; Kappa Delta
Pi; H2E, Treasurer; Monogram
Club, President; Choral Club;
Judicial Council; Clayton-Grimes
Biological Club; Freshman Bas-
ketball Squad; Hockey Varsity,
Captain; Basketball Squad; Base-
ball Team; Phi Sigma

think they were good they are books, books,
books I'd almost rather be unemployed didn't
that year abroad do wonders for Rhoda Pratt maybe I



EDGAR A. WEIGAND

B.S.

Elmhurst, New York

Theta Alpha Phi; Clayton-Grimes
Biological Club; Y. M. C. A.;
Chairman of International Rela-
tions Club; Dramatic Club; Pho-
enix Literary Society, Secretary



CATHERINE M. WESTBROOK

B.A.

Newport News, Virginia

Gamma Phi Beta; German Club;
G. G. G.; Flat Hat Staff

just never noticed before then there's Charlie McCurdy
all diked out with a winged collar and cane he must be
president of the senior class Clarence Darrow made



A. VIRGINIA WHITLOCK

B.A.

Richmond, Virginia

Los Quixotescos; J. Leslie Hall
Literary Society; Clayton-Grimes
Biological Club; Y. W. C. A.



MARY HONORE WICKHAM

B.A.

Newark, New Jersey

Kappa Delta; Chi Delta Phi;
Judicial Council; German Club,
President; Manager of Hockey;
K. O. B.; Y. W. C. A.

everyone think about his speech at convocation those
S. A. E. songsters could certainly knock off the harmony, especi-
ally their anthem, "Just Couldn't Say Goodnight" there



FLORA ELIZABETH WILLCOX

B.S.

Petersburg, Virginia

Phi Mu; German Club; G. G. G.; Clayton - Grimes Biological Club; Secretary-Treasurer Senior Class; Pan - Hellenic Delegate; Colonial Echo Staff; Varsity Basketball Squad; Phi Sigma



RUTH WILLS

B.A.

Newport News, Virginia

Transfer from Hollins College; Kappa Alpha Theta; Colonial Echo Staff; German Club; J. Leslie Hall Literary Society

have been a lot of good tunes in the last four years Sigma
Nu will have their new house by the end of summer one
of the most outstanding events of the winter was the opening



ANNIS WILKERSON

B.S.

Tazewell, Virginia

Phi Sigma; President Y. W. C. A.; Y. W. C. A. Cabinet; Clayton-Grimes Biological Society, Secretary; Glee Club; Hockey Squad; Orchestra



LYNWOOD WILSON

B.A.

Creve, Virginia

Transfer from Bob Jones College; Phi Kappa Tau; Wythe Law Club; Wranglers' Club, Bailiff; Freshman Football; Varsity Football; Varsity Debate Team; Inter-Fraternity Council

of the R. K. O. movie, probably the best small theatre in the country
it opened in time to almost bust everyone out at
mid-year exams that two-exam system certainly improves



G. RUFFIN WINFREE

B.S.

Richmond, Virginia

Phi Kappa Tau; Alpha Kappa
Psi; Delta Mu Chi; Men's Glee
Club, President; Music Council,
President; Inter-Fraternity Coun-
cil; Cotillion Club



MARY TAYLOR WITHERS

B.A.

Suffolk, Virginia

Transfer from Hollins College;
Kappa Alpha Theta; Colonial
Echo Staff; German Club; J.
Leslie Hall Literary Society

the old one-a-month one by exactly two two more im-
provements and they won't have any another Spring,
more rain at formal dances, and the last cram before the last



CATHERINE WOOD

B.A.

Richmond, Virginia

Transfer from Hollins College;
Alpha Chi Omega; J. Leslie Hall
Literary Society; French Club;
Y. W. C. A.; Palette Club;
German Club; K. O. B.



WILFRED M. WOODWARD

B.S.

New Brunswick, New Jersey

Transfer from Rutgers; Kappa
Sigma; Omicron Delta Kappa;
Flat Hat Club, Secretary; Vice-
President Men's Student Body;
Senior Tribunal; Inter-Fraternity
Council; Flat Hat Staff; Colonial
Echo Staff

exam there have been graduations around here for well over two hundred years, but this one means most, because it is



HERMA GEORGA ZEHNER

B.S.

Norfolk, Virginia

Sigma Pi Sigma; Phi Kappa Phi;
French Club; Secretary-Treasurer
Eta Pi Eta; German Club



MARION ZUYDHOEK

B.S.

Briarcliff Manor, New York

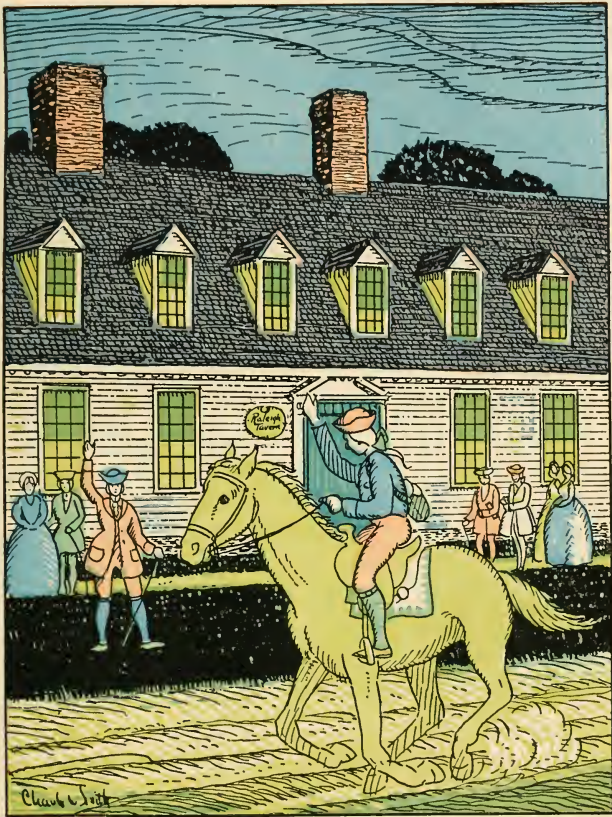
Edith Baer Club; German Club;
G. G. G.; Edith Baer Club, Vice-
President

ours

finals and

well, goodbye, gang

JAMES H. LITTLEPAGE.



A Fast-Riding Courier Spreads the News of Yorktown



THE MAIN BUILDING FROM THE WEST

JUNIORS



ARTHUR VAUGHN



BESSIE WHITE

HISTORY OF THE CLASS OF 1934

THE famous dignity of the College of William and Mary was somewhat rudely shattered in September, 1930. The cause of this disturbance was the enrollment of some four hundred freshmen, who from that time were spoken of as the Class of 1934. There had always been freshmen here before but none like these, but you know them as well as we do, so we won't go into it.

The first class election resulted in making Pat Murphy the president of that Freshman class. After a year of work his class left for the summer, some never to return.

With fall, the Class of '34 returned in a new role, that of Sophomores. Sterling Chambers was elected to fill the office of Presidency, and to assist him, Nancy DeLashmutt and Emil Johnson were also elected.

The next fall, that of 1932, the class again assembled, this time much more serious than before, and elected Arthur Vaughn and Bessie White to lead them. This time the class let its ability be known, and was well represented in all fields of activity.



Mary Abbit



Charlotte Allen



Alberta Alperin



Myron Aronovitz



Don Beecher



Perry Berstein



Catherine Blanton



Peter Baggish



Calvin Branch



Edna Bradshaw



Lucy Britt



Margaret Brown



W. D. Burton



Louis Carner



Joe Cardillo



Lillian Carmine



Ann Chalkley



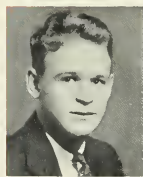
Sterling Chambers



B. C. Chapman



Alice Cohill



Ernest Colbrunn



Ethel Colbrunn



Ena Collier



Helen Collings



Helen Combs



Catherine Costello



Alice Cox



Sophie Croxton



Francis Culbreth



J. E. Davis



G. W. Daughtery



Agnes DeBusk



Nancy DeLashmutt



Nancy Dickinson



Huldah Dimmitt



Helen Donnelly



Robert Downs



Virginia Drown



Maxine Duvel



Lorraine Emory



E. H. Everhart



Althea Farrell



Annie Felts



Vivian Feige



Robert Fifield



Winifred Freiot



Charlotte Foster



Eleanor Gill



Helen Goldstein

Virginia Goodman

Donald Gordon

Dorothy Greene

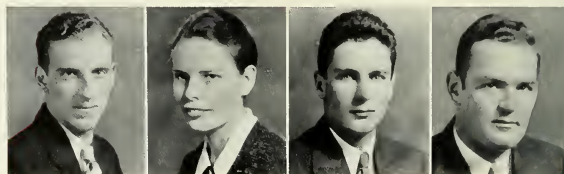


Florence Grover

Marion Holl

W. S. Hammond

Cecil Harper



Robert Harris

Virginia Harris

Arthur Hart

Robert Henderson



Douglas Hubard

Margaret Hildebrant

Jean Hogge

Aubrey Holladay



Frances Holloway



Virginia Horton



Marie Hoyt



Virginia Hurdle



Sara Iobst



Elizabeth Jacobs



Eldon James



Mary Jean



Ruth Jett



James Jobbins



Emil Johnson



Lester Kaufman



Jane Kemon



Roberta Kuyk



Sarah Lacy



Dorothy Lafitte



Sue Lancaster



Harry Land



Robert Land



Mary Lane



Louise Lang



Mary Laurence



Mamie Leigh



Jack Lewis



Nancy Lewis



Ralph Levine



Lester Litwin



Carleen Loeffler



Henry Lowman



Helen Lukens



J. P. Lyon



Edith Manning



David Matzkin



Isabella McCarthy



Thomasia McClintic



J. E. McDonald



W. H. Mercer



Frances Meador



Dorothy Mitchell



Ann Moorland



Aletta Muse



Pat Murphey



Lucille Ozlin



W. J. Palese



Roland Person



Helen Perry



Henry Perzekow



Ann Petty



Ann Pharr

Harriet Pittard

Elizabeth Poindexter

Dorothy Prince



Ruth Proudman

James Radcliffe

Mary Raleigh

James Ramsey



Alice Reasoner

Leake Richardson

Helen Ridgely

Evelyn Robertson



Margaret Ross

Virginia Russell

Bettina Sargeant

Lotta Scott



172 Ruth Sharratt

Helen Singer

Frances Sizer

Clara Sizemore



June Smith

Marcia Smith

Otis Southern

Harry Spack



C. K. Sparrow

Ann Spratley

Nannie Mae Squires

J. W. Stankus



Janis Steele

Elsie Story

Mary Talman

Clara Thompson



Elizabeth Toler



J. P. Trent



M. H. Trinkle



Walter G. Trow



Littleton Upshur



Elizabeth Vaiden



R. C. Vaden



Arthur Vaughn



E. W. Vaughn



Claude Wade



Ruth Waller



J. W. Warner



Margaret Watherwax



Elma Watkins



J. C. Watson



Bessie Lee Wellborn



John Weniger Bessie White Mary Frances Wiley M. D. Woodward



Margaret Wright Mary Morris Wright Elizabeth Young

ALMA MATER

Hark! The students' voices swelling,
Strong and true and clear;
Alma Mater's love they're telling,
Ringing far and near.

*William and Mary, loved of old,
Hark upon the gale,
Hear the thunder of our chorus,
Alma Mater—hail!*

All thy sons are faithful to thee
Through their college days;
Singing loud from hearts that love thee,
Alma Mater's praise.

Iron shod or golden sandaled
Shall the years go by—
Still our hearts shall weave about thee
Love that cannot die.

God our Father, hear our voices,
Listen to our cry—
Bless the College of our boyhood,
Let her never die.

—James Southall Wilson, '02



The Jamestown Coach Picks Up a Passenger



ONE OF THE JEFFERSON ARCHES, THE LIBRARY IN THE DISTANCE

SOPHOMORES



BARRETT HORTON



VIRGINIA MYSTER

HISTORY OF THE CLASS OF 1935

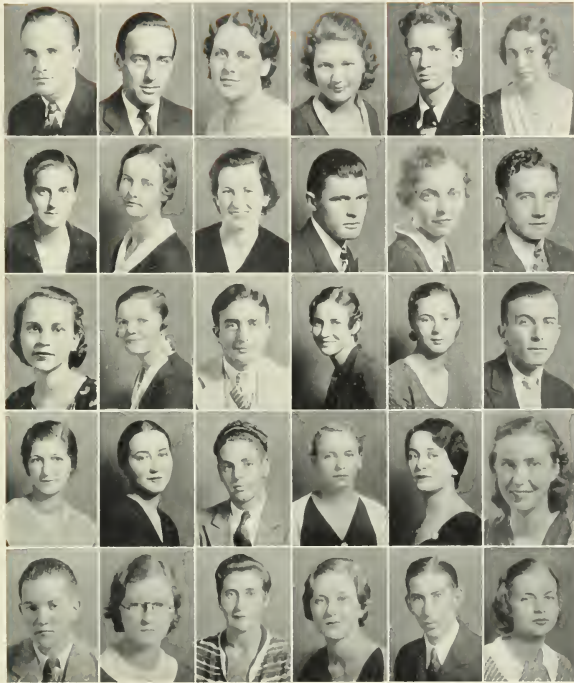
ONE of the largest groups ever to enroll here, 690 men and women, registered in September, 1931. A pleasant period of orientation was quickly followed by one of earnest study. The destiny of the class was entrusted to a capable set of officers, led by John Mapp.

The winter months saw two super-Frosh teams, basketball and swimming. The winter also saw the class begin to specialize in varied branches of extra-curricula activities.

With the arrival of warmer weather the Freshmen, imitating the upper-classmen, began to study in mixed couples, and otherwise forgetting why they were in school.

The year ended, as usual, with a headache from over-cramming at finals, but with a light heart at the prospect of the summer ahead.

The following fall, once again assembled together, the class elected officers, with Barrett Horton as President. Throughout the year these officers have led the class with admirable success. The spirit of the Sophomore group makes a promise of even greater success upon their return in 1934.



Jack Ackerman, D. W. Agnew, Mary Allen, Virginia Amoretto, Ed. Ball, Allene Bates
 Dorothy Beck, Virginia Bellevue, Betty Blaxton, Woodrow Bradley, Ella Mae Bristow, Donald Brockway
 Katherine Burch, Kitty Bush, Joe Cardillo, Matilda Chapman, Kitty Chiswell, Genedit Clark
 Alba Colabella, Laure Coleman, A. B. Coring, Francis Cosley, Pauline Cornett, Ethel Cross
 W. L. Davidson, Louise DeBurk, Virginia Dryer, Jane Dumont, V. L. Early, Fisher Eastham



Dorothy Ela, Ruth Engle, Chas. Fuller, Helen Gaslie, Jane Gilmer, Otho Givens
 Mills Godwin, Richard Griffen, Sam Griffen, E. F. Gum, Margaret Guy, Morton Guzy
 Rae Hannifin, C. E. Hatch, Bernard Headley, Grace Heard, J. E. Hessian, Jack Hiller
 Hazel Johnson, C. E. Jordon, B. M. Kent, Hazel Kleig, Ralph Ladd, Hudson Lankford
 Jessie Lee, Florence Lewis, Dot Mack, Sidney Maiden, James Mallones, Jean Major



J. O. Manley, Bud Mann, Eleanor Martin, L. A. Martone, Helen Mellor, Elizabeth Mitchell
 Shirley Mitz, Earl Morden, Louise Morriss, Marianne Norris, Ann Northington, Cameron Ogden
 S. J. Paine, Sumner Paisner, Helen Payne, Eleanor Parks, Harry Perfator, Helen Perkins
 Ruth E. Personius, Sam Phillips, Ann Poindexter, Joseph Pollard, Roslyn Richardson, Mary Roberts
 Earl Robertson, Doris Robinson, W. W. Savage, F. W. Schmidt, W. G. Schmiedel, Marie Schroeder-Lake



Martha Seaver, Hanna Severin, John Shepard, Mary Shreve, Francis Sibley, Bill Slocum
 Francis Smith, J. S. Smith, Chris Sorenson, Ralph Stambaugh, Betty Stetson, Lena Stratton
 Joe Stupalsky, Cecilia Thomas, Janette Thorp, Margaret Thorp, Dick Veltz, Elizabeth Walker
 J. W. Wanner, Elizabeth Ware, G. Weinbaum, Flossie West, Mary Whitley, Margaret Wilson
 Jane Whittaker, H. M. Wolff, W. H. Woodson, Muriel Wyman, Leona Yoder, D. W. Young



Life Moves Slowly in the Lazy Shade of Williamsburg



WASHINGTON HALL FROM THE MAIN BUILDING

FRESHMEN



THOMAS AYERS

THE CLASS OF 1936

As a result of the Freshman Class elections, Thomas Ayers and Ollie Darling were chosen to lead the group.

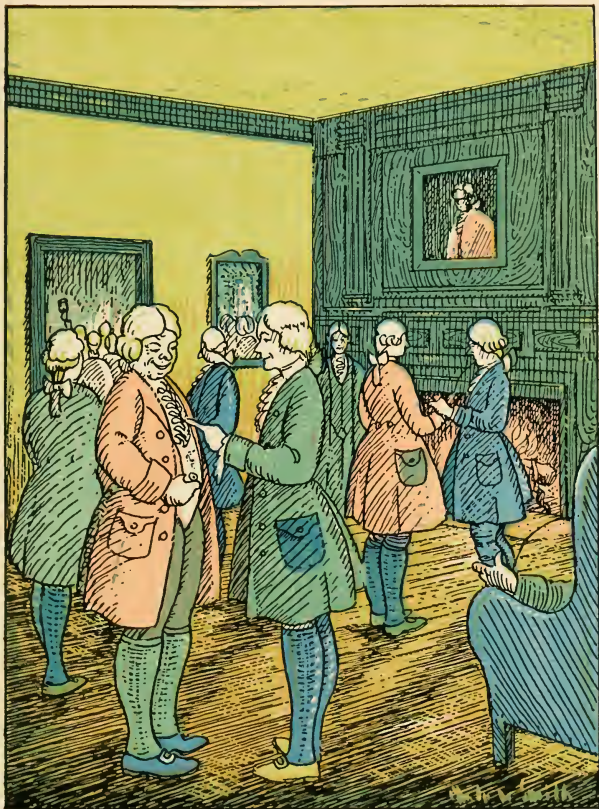


FRESHMAN ROLL, MEN

Akers, R. T.
 Alford, Gordon
 Allen, M. F.
 Ames, Meridith
 Anderson, H. P.
 Anderson, Ralph
 Arnfield, J. S.
 Ash, G. P.
 Ashton, John
 Atkins, Woodrow
 Ayers, T. S.
 Barman, G. D.
 Bailey, G. M.
 Baker, Walter
 Ball, E. P.
 Barnes, R. F.
 Baugh, C. F.
 Beasley, W. G.
 Beheer, Russell
 Beheer, Earl
 Bennett, W. E.
 Benthall, W. R.
 Bernstein, Morris
 Bishop, J. G.
 Blake, E. L.
 Blaker, A. W.
 Bloch, Leo
 Bosley, Emerson
 Bouldin, W. M.
 Bozarth, M. F.
 Bracy, H. C.
 Bradshaw, J. P.
 Braithwaite, W. H.
 Bray, H. P.
 Brickhouse, H. J.
 Bright, K. M.
 Broughton, H. K.
 Brown, C. C.
 Brown, A. R.
 Brann, J. C.
 Bryant, M. I.
 Buck, L. P.
 Baghee, R. H.
 Bullard, L. P.
 Bunting, John
 Burns, J. J.
 Burrows, L. P.
 Butts, T. C.
 Cahn, S. M.
 Cardillo, J. E.
 Carney, S. B.
 Casagrande, F. C.
 Cataldo, E. G.
 Causey, P. P.
 Chandler, R. B.
 Child, K. B.
 Childress, R. H.
 Choquette, John
 Christian, J. T.
 Clark, Grenslit
 Coard, W. A.
 Coffey, H. O.
 Coleman, J. S.
 Collins, W. F.
 Conner, Edgar
 Council, H. G.
 Crist, V. F.
 Crowl, W. T.
 Cummings, K. G.
 Davies, W. T.
 Davis, L. W.
 Davis, N. R.
 Davis, R. C.
 DeGrado, John
 Dempster, A. P.
 Devereaux, D. J.
 Diamant, G. E.
 Diamant, J. E.
 Diamond, Isaac
 Dinan, W. T.
 Dix, R. E.
 Doss, C. W.
 Dozier, E. W.
 Drew, J. S.
 Duncan, W. L.
 Edmondson, Woodrow
 Eddy, N. S.
 Edwards, J. C.
 Elliot, O. B.
 Elliott, S. A.
 Ellison, R. R.
 Elmore, R. A.
 Farmer, C. M.
 Findlay, J. C.
 Fleming, E. A.
 Fletcher, J. G.
 Flickenger, J. R.
 Flinn, G. W.
 Foster, B. W.
 Foster, M. S.
 Fox, J. W.
 Freeman, H. D.
 Frungillo, P. W.
 Garratt, H. W.
 Garlen, H. P.
 Glen, G. W.
 Goodwin, M. E.
 Good, H. P.
 Goudy, J. P.
 Goutman, J. C.
 Gove, W. P.
 Greer, N. F.
 Gregory, D., Jr.
 Griffin, R. B.
 Gross, Melvin
 Gross, Wilbur
 Grubb, E. S.
 Haley, E. A.
 Halpern, E. S.
 Hamilton, H. H.
 Hanna, H. M.
 Hanna, J. C.
 Hanna, M. I.
 Harley, K. E.
 Harlow, H. J.
 Harrison, J. A.
 Harvell, J. G.
 Harwood, J. E.
 Haughton, J. A.
 Hayes, J. M.
 Heinemann, F. T.
 Henderson, J. P.
 Henderson, W. C.
 Henley, R. W.
 Hine, Clifford
 Hoffman, T. P.
 Hogue, Narron
 Holladay, Edward
 Hopkins, C. T.
 Hubbard, J. B.
 Hunt, J. W.
 Hurst, C. K.
 Hutcheson, J. L.
 Hutton, J. L.
 Jacobs, H. D.
 Jacobs, E. L. G.
 James, W. W.
 Jaslow, I. A.
 Jenkins, S. H.
 Jersch, R. S.
 Johnson, D. C.
 Katz, Louis
 Kelly, A. R.
 King, W. S.
 Kissenger, L. E.
 Frank, J. S.
 Kruse, C. H.
 Lambert, P. A.
 Lanz, Norman
 Law, C. M.
 Layne, C. W.
 LeGrande, W. E.
 Leonard, J. F.
 Lessin, Andrew
 Lewis, A. W.
 Leibman, M. J.
 McConnell, Malcolm
 McCutcheon, Crichton
 McCutcheon, W. L.
 McGuire, J. Hackett
 McKay, R. A.
 McKenna, J. W.
 McNeil, V. A.
 McEwan, G. T.
 McMannus, J. A.
 Madison, R. J.
 Magdalin, C. E.
 Mangel, Emanuel
 Mankin, E. D.
 Mapp, John Rogers
 Marable, Aubrey
 Marlen, W. H.
 Martin, D. W.
 Mason, George
 Matthews, P. L.
 Meador, G. S.
 Merriam, Phillip
 Meyer, B. G.
 Miller, C. B.
 Miller, W. E.
 Mitchell, W. A.
 Moore, D. W.
 Morecock, W. A.
 Mooreman, J. H.
 Morden, E. B.
 Murray, J. M.
 Myers, P. L.
 Neale, M. W.
 O'Connell, R. A.
 O'Neill, G. L.
 Orenstein, M. B.
 Parker, J. R.
 Payne, G. L.
 Pedne, P. L.
 Petrie, J. B.
 Pettus, G. O.
 Phillips, E. L.
 Pleasants, W. A.
 Plummer, L. G.
 Pomeroy, W. C.
 Posner, S. J.
 Pratt, P. M.
 Price, Julian
 Price, J. B.
 Pullen, L. E.
 Radcliff, W. E.
 Reisman, Sidney
 Rennolds, B. A.
 Reynolds, G. B.
 Rhodes, B. E.
 Rhodes, W. J.
 Richards, Thomas
 Richardson, W. W.
 Ripley, Thomas
 Robbins, H. E.
 Robertson, Barrett
 Robertson, W. J.
 Rogers, W. R.
 Rohn, Frank
 Rose, W. L.
 Rothstein, Gerald
 Roundtree, Henning
 Rowe, J. W.
 Roy, E. A.
 Saffter, H. K.
 Sanford, Gayle
 Savedge, W. H.
 Sawyer, H. T.
 Schwab, E. M.
 Scalfia, August
 Seymour, H. G.
 Shapiro, D. P.
 Sherman, W. A.
 Sherman, R. M.
 Short, E. C.
 Silverman, E. J.
 Silverman, Irving
 Simpson, H. T.
 Simpson, J. P.
 Smeltzer, Charles
 Smith, J. S.
 Smith, P. T.
 Smith, W. H.
 Snowden, D. S.
 Soar, G. H.
 Stallings, Walton
 Staoton, R. J.
 Stewart, F. E.
 Stapalsky, J. A.
 Scedrlik, S. S.
 Talley, E. A.
 Tallferro, W. B.
 Taylor, E. R.
 Temple, T. E.
 Tenary, R. P.
 Thomas, E. O.
 Thornton, Donald
 Timberlake, A. L.
 Tingley, B. W.
 Torrence, W. C.
 Treagle, R. A.
 Trenary, K. R.
 Trombetta, Salvatore
 Trow, B. E.
 Troyano, Felix
 Troyano, Fred
 Tulin, S. L.
 Turner, T. H.
 Uphan, S. D.
 Wachsmuth, T. C.
 Walker, L. E.
 Walker, S. M.
 Wallace, R. S.
 Wallace, Z. R.
 Warner, J. R.
 Warnock, W. L.
 Warts, Raphael
 Weade, F. M.
 Weckler, Herbert
 Weiner, Herbert
 Wells, J. W.
 Wells, W. E.
 Whitehead, J. P.
 Whitesell, W. G.
 Whitlock, C. E. H.
 Wight, W. L.
 Wilhelm, W. E.
 Willis, J. M.
 Wilson, Frank
 Wilson, C. W.
 Wilson, W. C.
 Winfree, W. A.
 Winstead, W. R.
 Wise, W. S.
 Woodward, J. A.
 Wright, R. D.
 Yerkes, W. W.

FRESHMAN ROLL, WOMEN

Abel, Ann	Dmanc, Antoinette	Kennedy, Mary Frances	Roth, Mary Jean
Ackerman, Virginia	Dugger, Jane	Kent, Alice	St. Clair, Sarah
Allison, Mary Elizabeth	Dunlap, Dorothy	Key, Mary	Salisbury, Mary
Anderson, Dorothy M.	Early, Louise	Keyser, Anne	Slamon, Ethel
Anderson, Olive	Easley, Shirley	Kimmel, Helen	Sanford, Florence
Anwyll, Ruth	East, Anne	Kinsley, Dorothy	Sanford, Lelia
Armistead, Nancy	Edmond, Sarah	Klug, Dorothea	Sanford, Margaret
Aumake, Warrana	Edmunds, Mary Lee	Knight, Julia	Savage, Mary Elizabeth
Ayers, Emily Jane	Edwards, Mary	Korn, Edith	Scammon, Sarah
Bailey, Louise	Edwards, Sidney	Lake, Barbara	Schwab, Elizabeth
Baker, Florence	Etheridge, Mary	Larson, Mildred	Seller, Helen
Beaton, Mary F.	Etridge, Constance	Levenson, Constance	Sheehan, Jeanette
Beck, Dorothy	Evans, Florence	Lewis, Blanche	Sheid, Margaret
Beche, Esther	Evans, Virginia	Lewis, Eileen	Shointak, Rose
Bell, Imogene	Fagan, Virginia	Lewis, Florence	Shewmake, Lelia
Benson, Virginia	Ferguson, Kathryn	Lichenstein, Frances	Shiley, Helen F.
Bentley, Mary Katherine	Ferguson, Phyllis	Lincoln, Laura	Skofield, Helen
Berry, Jean	Fieser, Betty Anne	Levitch, Florence	Slack, Mary
Berryman, Dorothy	Fisher, Margaret	Lucas, Pauline	Smith, Agnes
Berwind, Mary C.	Fletcher, Nancy	McCallum, Eleanor	Smith, C. Joyce
Blanchard, Esther	Fraser, Dorothy	McClanahan, Mary	Smith, Louise
Bloxton, Nellie	Freeman, Margaret	McCready, Ann	Snoot, Kitty
Bousman, Daphne	Friedman, Marguerite	Mann, Theodosia	Spauld, Emily
Bowrt, Dorothy	Fritz, Lucille	Marsh, Helen Elizabeth	Spickard, Frances
Boyd, Louise	Fuller, Marguerite	Marston, Berenice	Spencer, Susie
Bradford, Ann	Garnett, Gloria	Martin, Thelma	Spradlio, Myrtle
Brecher, Shirley	Garrett, Frances	Mattier, Muriel	Spriggs, Eleanor
Briggs, Marjorie	Geogize, Marjorie	Maynard, Bernice	Steger, Jane
Bristow, Ella May	Giffen, Margaret	Maynard, Evelyn	Steele, Jane
Bristow, Kate	Goldborough, Eliza	Maynard, Vivian	Steinhart, Hannah
Brooks, Callie Margaret	Goldsstein, Ella	Mellor, Dorothy	Stephenson, Adele
Brougher, Winifred	Gordon, Elizabeth	Mern, Helen	Sterling, Virginia
Brown, Josephine	Gordon, Lucille	Miller, Sara	Stronoff, Elvina
Brown, Mary Elizabeth	Grayson, Mary Kathryn	Mitchell, Mildred	Stuart, Marian
Bryhn, Marie	Griffen, Olivia	Mocre, Mary	Tanner, Jane
Bull, Sarah H.	Gruss, Helen	Moreland, Frances	Terrell, Dora
Bunting, Clarice	Hadley, Mahel	Moseley, Elizabeth	Thiemeyer, Marie
Burd, Helen	Hamilton, Vaiden	Moss, Claudine	Thomas, Edith
Burns, Mary Anne	Hampton, Mande	Murray, Helen	Thompson, Margaret
Burpean, Suzanne	Hann, Harriett	Neele, Evelyn	Torp, Marjorie
Burr, Elean	Haris, Dorothy	Nice, Dorothy	Torrence, Mary
Burton, Bernice	Harris, Virginia O.	Nichols, Mary	Touton, Dorothy
Butts, Mary F.	Harrison, Gibbie Galt	Nickerson, Priscilla	Trevilian, Marain
Caldwell, Nell	Harwood, Helen	Nickum, Dolores	Tratt, Eileen
Campbell, Helen	Hathaway, Susan	Nores, Lorraine	Truitt, Martha
Carter, Hester	Hatke, Margaret	Oakey, Ruth	Underhill, Mary
Chandler, Frances W.	Haynes, Elma	Omolundiro, Mirian	Vaden, Mary
Clarke, Dorothy	Heinemann, Mildred	Opheim, Sylvia	Valentine, Elizabeth
Coddington, Gertrude	Hentz, Carol	Palmer, Lucille	Van Dien, Doris
Coc, Norma	Hicks, Mary Glenn	Parker, Virginia	Van Out, Margaret
Connelly, Martha	Hitchens, Mae	Patchell, Iris	Vedder, Virginia
Conner, Helen	Hobbs, Marian	Payne, Helen	Walker, Eleanor
Cooper, Doris N.	Holland, Nancy	Payne, Elizabeth	Walker, Elizabeth
Cornett, Pauline	Holmes, Natalie S.	Peoples, Nancy	Wall, Corinne
Cowie, Betty	Hooker, Amie	Personius, Ruth	Waltrip, Elizabeth
Cox, Ella	Hooker, Eleanor	Peteas, Sara	Ware, Elizabeth
Croft, Margery	Hoopman, Eleanor	Pohlke, Ann	Watkins, Katherine
Crouse, Elizabeth	Hopkins, Evelyn	Pomdexter, Ann	Watson, Betty W.
Crutchfield, Alice	Horn, Nancy	Porter, Mary	Weaver, Ann
Cummings, Ann	Horton, Mary	Powell, Catherine	Weber, Margaret
Cunningham, Josephine	Howard, Barbara	Powers, Bettina	Welch, Jane
Curle, Louise	Hubschmitt, Penelope	Price, Margaret	Wellman, Sally
Dalton, Dallas	Hull, Jeanne	Prize, Jean	West, Virginia
Daly, Mildred	Hunt, Sara Missouri	Rabner, Edith	Whitehead, Eloise
Darling, Olive	Hunt, S. Virginia	Rawls, Hannah	Wilkinson, Alice
Davis, Barbara	Jackson, E'izabeth	Rawls, Louise	Willis, Kathryn
Davis, Carolyn	Jackson, Helen	Reeves, Mary	Wilson, Jean
Dawson, Marguerette	Johnson, Georgia	Richardson, Ezerina	Winn, Anne J.
Dewing, Mary E.	Johnston, Natalie	Richardson, Roslyn	Winship, Emily
Dickinson, Rebecca	Jones, Delphine	Roach, Virginia	Wright, Ruby Mae
Dobbs, Sarah	Jones, Louie	Roberts, Mary	Wyman, Muriel
Dorgeval, Virginia	Jones, Nancy	Robertson, Ruth	Young, Betty
Dougherty, Alice	Jordan, Alice	Robinson, Janet	Young, Isabel
Doyle, Elizabeth	Kaplan, Cecil'e	Rogers, Maude	
	Kendall, Norma	Rose, Helen	



The Tavern Tap-Room, Laughter, Smoke and Friends



KELLISON, *Coach*

HALLIGAN, *Captain*

FOOTBALL



JOHN KELLISON



WILLIAM GOOCH

THE COACHES

Under the supervision of the William and Mary coaches, the College teams have become well known throughout the country as "those fighting Indians." There will be no better opportunity than this for the student body to congratulate these men upon the successful way they have guided the groups under them.

If William and Mary had only a few well-known teams, then it might be said that the results were because of the excellence of the players, but when the school has teams in all sports, every year, that are consistently winners, there can be but one conclusion, that the coaches are, at least, partly responsible.

So The Colonial Echo, with, we know, the indorsement of the student body, thanks Mr. Kellison, Mr. Gooch, Mr. Chandler, Mr. Fetzer, Mr. Davis, and all the assistant coaches who have by instruction and example produced the clean playing, hard hitting teams for which the College is famous.





THE VARSITY SQUAD

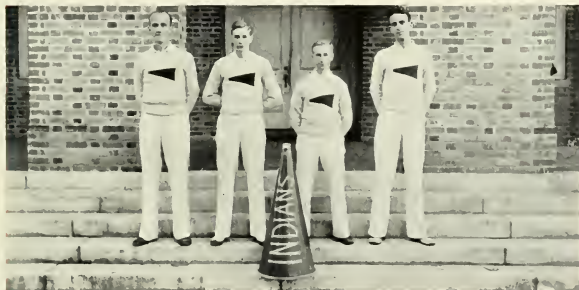
FOOTBALL SUMMARY

W. & M., 6—ROANOKE, 0

The W. & M. Indians opened the season against a fighting Roanoke College eleven that put up a valiant stand before the powerful Tricolor line and the spectacular runs of "Bucky" Worrell. Though the Indians started slowly, they were not pressed at any time, and won by 6 to 0.

W. & M., 27—RANDOLPH-MACON, 13

Over 6,000 fans saw the William and Mary Indians turn back a well-balanced Randolph-Macon team, 27-13, at Cary Field. The alert Yellow Jackets drew first blood in the initial quarter, but the Indians came back with a vengeance and scored four touchdowns in the next three periods. "Billy" Palese, spectacular Indian back, accounted for two, while Giles and Spack each tallied one. With two scalps to their credit, the Warriors turned to Annapolis.



Huberd, James, Horten, Southern



MEADE



HALLIGAN



LA CROIX

W. & M., 6 — NAVY, 0

The victory over Navy was, perhaps, the most sensational of the season. Led by Captain Halligan and Billy Palese, the Indians smashed an unbroken string of six Midshipman victories over William and Mary, to place themselves in the nation's football spotlight. William and Mary's touchdown came in the third quarter as a result of some brilliant running by LaCroix and Palese. Meade, a Tricolor guard, recovered a forward fumble for a first down on the Navy 30 yard line. La Croix ran 15 yards for another first down, and Palese skirted left end for a touchdown on the next play. The well-deserved victory stamped the Indians as one of the outstanding football teams of the South.



Halligan gets away a long one in the W. & L. game



WILSON



PALESE



QUIRK

W. & M., 17 — GUILFORD, 0

Billy Palese was outstanding in the Guilford game, scoring four touchdowns for the Tricolor, while Chalko, La Croix and Spack each tallied once.

The game was marked by the consistent extra-point boosting of Ed Meade, who place-kicked 100 extra points in as many tries.

W. & M., 0 — V. P. I., 7

A crowd of 18,000 people gathered in the Richmond Stadium to watch the State's two greatest elevens battle to a finish.



Chalko carries the ball in the V. M. I. game



HENDERSON



CHALKO



DARDEN

The game was featured by the clashing of two powerful lines, and not once during the game did either team advance within the 18-yard line of the opponent.

The break came in the third quarter when V. P. I. completed one of the many attempted passes to score. Seamon, of the Gobblers, snared a pass in the open field and romped over the line for the only score of the game. Despite the loss of two regulars in the backfield, Palese and Shade, the Indians played a great game all the way.

W. & M., 7 — W. & L., 0

On October 22, Norfolk witnessed the annual William and Mary - Washington and Lee game at Bain Field. The Generals, garnered their full strength for the first time of the season, to put up a great battle against the slashing attacks of the Indians. Although William and Mary gained consistently through



Palese makes the touchdown at Navy



STEWART



BRIDGES



SPACK

the Generals' line, they were able to score only one touchdown as the result of a pass from Cloukin to La Croix. Ed Meade added the extra point with a placement kick.

W. & M., 0—ARMY, 33

The following Saturday, the powerful West Point eleven turned back a stubborn William and Mary team, 33-0. The Indians fought valiantly throughout the game and succeeded in holding Army to 7-0 at the half. However, in the third quarter, the heavier Army team wore down the Virginians by sending in new men, and crushing them by superior manpower. The Indians died hard; the game itself being actually more evenly contested than the score indicated. Harry Spack, in the backfield, and Ed Meade and Gerry Quirk in the line, stood out for the Tri-Color.



LaCroix around right end for a gain



SHADE



ANDERSON



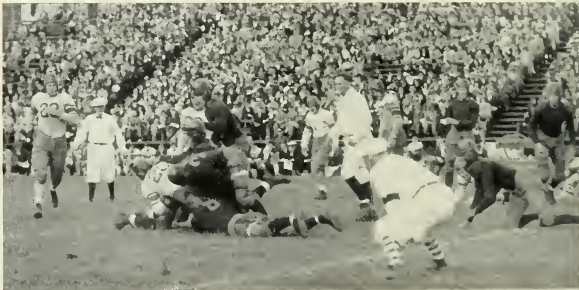
WORRELL

W. & M., 77 — BRIDGEWATER, 0

The following Wednesday, the Warriors went on a wild rampage to crush Bridgewater College, 77 to 0. The plucky Eagles, although no match for William and Mary, are due a great amount of credit for their excellent spirit.

W. & M., 20 — V. M. I., 7

Norfolk again saw the Indians march on to victory, this time crushing the Virginia Military Institute, 20 to 7. The Indians scored on a long pass, Cholko to Myers, in the first quarter, and Palese added another in the second quarter on a sweeping end run. The third touchdown came in the last frame when Worrell raced around right end on a lateral to score.



Spack carries five Navy men with him



SORENSEN



GILES



BERGIN

W. & M., 6—GEORGE WASHINGTON, 12

Armistice Day saw a crippled William and Mary team battle George Washington University in a sea of mud at Griffith Field, Washington, D. C. With six first-string men, including Captain Happy Halligan, out of the game, the Indian offense was checked and the patched-up line fought desperately to hold off the heavy Colonial eleven. Worrell broke away in the last quarter to make a 50-yard broken field run for a touchdown.

W. & M., 18—E. & H., 6

The Indians defeated Emory and Henry, 18 to 6, before a Homecoming Day crowd on November 19. Although they won, the Indians were beginning to show signs of fatigue from the long, hard schedule they had already gone through. Billy Palese, diminutive Indian halfback, scored the three touchdowns, to clinch his right to the honor of being the outstanding back in the state.



A short one from Shade to Palese



YOUNG



SMITH

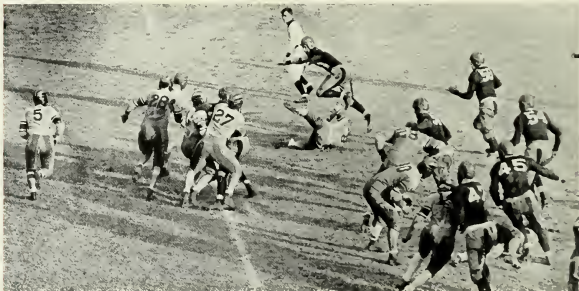


JOHNSON

W. & M., 7 — RICHMOND, 18

The forty-first annual classic between the University of Richmond Spiders and the William and Mary Indians on Thanksgiving Day saw the tired and football-worn Indians fall before the Richmond eleven. The twelve-game schedule showed its effect upon the Tricolor, while Richmond's seven game schedule enable them to point for their ancient foes—this time to victory.

Ed Meade, Indian guard, playing his last game, scored William and Mary's only touchdown by pouncing upon a deflected punt over the goal line, and then place-kicked the extra point. The result of the game came as an upset to all local sports followers, but the loss of the last game of a long but successful season did not detract from the splendid season record of the team.



Shade around left end with Quirk taking them out



LYNN, *Captain*

KELLISON, *Goalie*

BASKETBALL



LYNN

HALLIGAN

FRANKLIN

LITWIN

BASKETBALL

In the first game of the season, Navy had little trouble in winning from the Indians with a 57-46 score. Captain Lynn was the star of the game. Following the Navy game the Indians encountered St. Johns and again lost to the count of 25-21.

Returning to Virginia the Tricolors lost to the Cavaliers by a 45-35 score.

Far from discouraged by the above losses, the Indian five then took the Roanoke Maroons to camp by a 36-25 score. This contest marked the first home game as well as the first victory. Gallinant and Litwin starred to spell Roanoke's downfall.



Franklin scores one in the Richmond game



LEMBACK

WORRELL

BURKE

MANNING

With last year's defeat in mind, the determined Braves then took another scalp at the expense of Hampden-Sydney. Although the final score was 26-23, the outcome of this game was never in doubt.

There followed four more victories: Lynchburg, 39-32; Randolph-Macon, 32-27; Guilford College, 45-20; and the University of Richmond, 45-25.

The last mentioned game left the Indians all smiles. Litwin, Gallinant, and Lynn popped in shots from all angles of the court. The Thanksgiving defeat was at least partially revenged.

Perhaps the most heart-breaking game of the season was that against University of Georgia's Bulldogs. This hard fought game, before packed galleries, was lost by one point, 32-33.

Leaving for their final out of town engagements, the Indians launched an unsuccessful attack on the Washington and Lee Generals. After leading at intermission the Tricolor offense weakened and the host's scoring guns spurted to gain a 53-36 decision.



Gallinant and Litwin, Indian scoring aces



REED

MARDEN

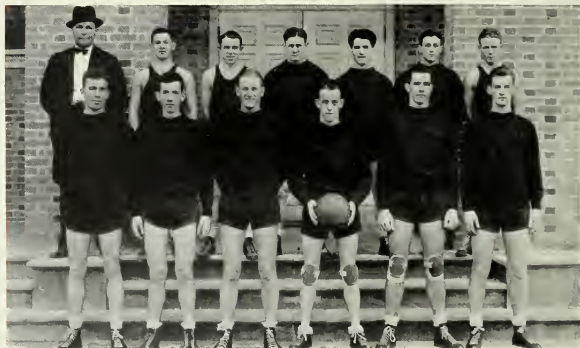
KREMEN

Bridgewater was next crushed by a 47-20 score. The Eagles, although playing a sterling game, never seriously threatened the Indians.

An outstanding conquest of the season was that of the Warriors over the V. M. I. Keydets, the game being played in Lynchburg. None of the Keydets could score more than four points, and the team which later defeated Virginia went down at the hands of the Kellisonites, 27-21.

A large crowd assembled in Blow Gym and watched the highly touted Emory and Henry Wasps and the phenomenal Roberts held at bay. The final score of this game was 32-27.

The last games of the season were won as follows: Bridgewater, 51-13; Randolph-Macon, 38-27; University of Richmond, 40-37; Hampden-Sydney, 27-23.



The W. & M. Varsity Basketball Squad



KELLISON
Coach

CHRISTENSEN
Captain ('33)

CARROLL
Manager ('35)

BASEBALL



McBRIDE

SUNDIN

MOZELESKI

BASEBALL SUMMARY

Under the coaching of John Kellison and the captancy of Red Maxey, the William and Mary baseball team went through a successful season, losing but four games out of a sixteen game schedule.

The season's opener was with the University of Richmond, which turned out to be a close one, ending 7-6, the edge being with William and Mary.

The next game, with Roanoke College, was a slugger's delight, Roanoke going down to a 17-2 count. After this the Tri-Color turned to Washington and Lee.

The game with the Generals was another tight one, William and Mary finally winning 4-3.

As a relief between two close ones, the Bridgewater game came as a vacation to the ball players. This game, featured by its many hits, ended 11-0.



WHITE

DEMAREST

LeCROIX



MARKS

STANKUS

MAXEY, *Captain*

The second of the series with Richmond ended with a one run advantage for William and Mary, the score being 4-3.

Following this, the second Bridgewater game ended as a surprise to the fans. Fighting hard in a thrilling game, the Eagles went down with four runs to William and Mary's five.

After taking the V. M. I. Keydets over for a five to two count, the Indians felt their first defeat when they met the Washington and Lee Generals in a game that ended 3-13 with the Tri-Color group on the short end.

To make matters worse, the Generals again took the Indians to camp 11-6. Washington and Lee was avenging their early-season loss.

To make up for the W. & L. losses, a determined bunch of Indians made Randolph-Macon suffer, 12-5, in an everybody-up, everybody-hit game.



GALLINANT

SUTTLE

BRADLEY



KELLISON, *Coach*



CHARLES, *Manager, '32*

A third loss, one to Hampden-Sydney by a four-five score, was avenged the next day when the Indians romped away, 6-3.

The fourth and last loss of the season occurred when William and Mary went down before a strong Maryland team, 4-14.

A splendid game with the U. S. Naval Academy followed with the Indians emerging with the proverbial Navy Goat, winning 7-3.

The season finally wound up with a game with the University of Vermont who were blanketed 2-0, in a beautiful game on Cary field.

The following men were outstanding on the Varsity team: Maxey (Capt.), Suttle, McBride, Sundin, White, Stankus, Bradley, Marks, Englebert, Christenson, Gallinant, Demarest, LeCroix, Mozeleski.



The W. & M. Varsity Baseball Squad



NOTTINGHAM
Manager

SMITHERS
Captain

CHANDLER
Coach

TRACK



Clark, Roberts, Perzekow, Doane, Johnson

TRACK SUMMARY

Since the advent of "Scrap" Chandler as track coach, William and Mary has produced some of the finest teams ever to perform in the South.

As a result of the continued brilliant performances, William and Mary was admitted, the only college in the South, into the Intercollegiate Association of American Athletes, most select of all track associations in America. It was a great step forward in track activities, and the future of track in William and Mary is even more promising.

The 1932 team, led by Captain Smithers, presented a powerful, well balanced team that won six of its seven meets by overwhelming margins, the single loss being to Navy by the close score of 57-69. The Indians defeated two Southern Conference opponents, W. & L. and V. P. I., and easily carried away the Virginia Conference Championships in Richmond.



Reid, Hart, Litwin, Bacon, Casey



Hemingway, Flickinger, Renn, Smithers, Sparrow

Mouch Smithers in the dashes, Wink Johnson, holder of the college record in the mile and half-mile, John Bacon in the high jump, and Ed Meade in the weight events were outstanding. These four participated in the Intercollegiate Championships in California last summer.

Barrett Roberts in the half-mile, Stan Doane and Billy Renn in the two-mile, Brooks Flickenger in the pole vault and Les Litwin in the hurdles consistently turned in fine performances.

Despite the loss of Capt. Smithers, Johnson, Syer, and Doane, the prospect for next year seems bright.

Ed. Meade was the season's high scorer, and at the end of the year was elected captain of the 1933 team.



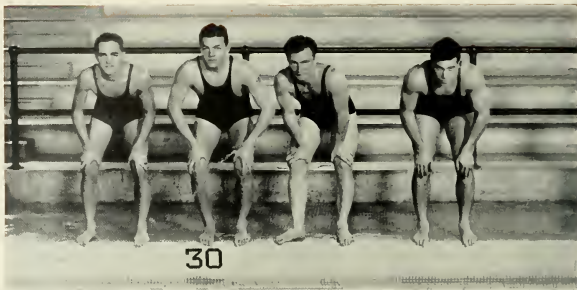
Varsity Squad



Action on the Track



MINOR SPORTS



Bragen, Warnock, Casey, Meade

SWIMMING

The William and Mary Tankmen started off their season with a 42-24 victory over Randolph-Macon. Duke took over the locals by a 39-29 score, following which the Indians gained their second victory over Randolph-Macon at Ashland in a 41-25 affair. North Carolina State and Delaware won respective victories over the Tri-Color men, the Indians coming back to win their third meet of the season over Fort Monroe, 42-24. Washington and Lee's aggregation topped the Indians by eight points, and was followed by the George Washington and Johns Hopkins meets, which were both lost. These two meets concluded the season.

During the six week's season the work of Captain Case, Meade, Flickenger, Ogden, Bragen, Stone, Warner, and Eidness was outstanding.



The William and Mary Swimming Squad



Action on the floor

FENCING

Fencing, a sport which is becoming more and more popular at William and Mary, has become firmly established on the campus. The schedule opened with a match with V. M. I., which was lost by the narrow margin of one touch. Following this, the fencers defeated Rollins College, 17-0; Lehigh, 15-2; and Lafayette College, 15-2. In the final match of the northern tour, the Indians lost to Rutgers by the close score of 9-8. Upon returning to Williamsburg, they played host to the Southern Inter-Collegiate Fencing Tournament, April 4th and 5th. In this the William and Mary fencers won the Southern Inter-Collegiate Championship.

The work of Mack, MacDonald, Phillips, and Matzkin was outstanding. Much credit should be given to Mr. Tucker Jones who so successfully coached this exceptional team.



The Fencing Squad



TENNIS

Captain "Susie" Sheehan and Leo Minskoff, last year's lettermen, will probably carry the brunt of the '33 Tennis team. Among those turning out for the first practice and who show considerable promise are Kass, Kerner, Jackier, Fink, Owens, Schmidell, and MacPherson. The opening match of the season will be against the University of Richmond.

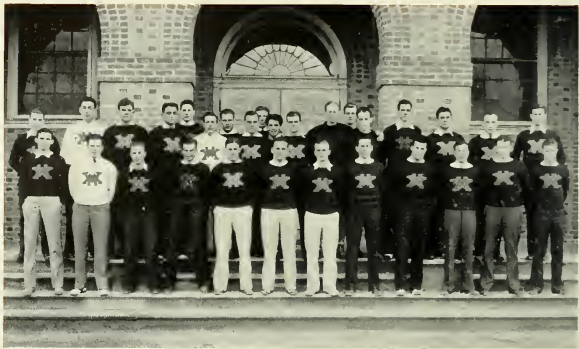
The team is being coached by John Lewis, former W. & M. court star, and the prospects for a winning season seem to be good.



GOLF

In a small snow storm the W. & M. golfers opened their 1933 season by defeating Rollins College of Florida, 10-8, on the James River course. Burke, Waters, Bocoek, and Captain Jaffee each played good golf to win their matches.

These four men beat V. M. I. by a 14-4 score at Lynchburg, and lost to W. & L. by one point, $9\frac{1}{2}$ to $8\frac{1}{2}$. Later the team lost to Duke and Richmond by close scores.



MONOGRAM CLUB

FOOTBALL

E. Johnson
Worrell
Henderson
Meade

Quirk
Sorenson
Myers
Stewart

Halligan
Smith
Bridges
Young

LeCroix
Spack
Anderson
Palese

Hargrave (Mgr.)

BASKETBALL

Halligan
Lynn

Franklin
Litwin

Lemback
A. Caplan (Mgr.)
Smith (Mgr. '29)

Gallinant
Armstrong

BASEBALL

Bradley
Carroll (Mgr.)

Stankus
LeCroix

Gallinant
White

McBride
Christensen

TRACK

Persekow
Reid
Roberts

Hart
Casey
Flickenger

Quirk
Meade
Sparrow

Litwin
Elliot (Mgr.)

SWIMMING

Casey
Meade

Bragen

Flickenger
Ogden

GOLF

Jaffee

Waters

McCurdy (Mgr.)

TENNIS

Sheehan

Minskoff



ATHLETIC COUNCIL

Gerald Quirk

President

William Palese

Vice-President

Jack Lemback

Secretary-Treasurer

Thomas Hargrave

Football

Armond Caplan

Basketball

Morris Elliott

Track

Raymond Carroll

Baseball



FRESHMAN FOOTBALL.

The 1933 Freshman Football Team played a stiff schedule this year. Led by Capt. Pomeroy the team was victorious in four out of six games, all of which were against college teams. Among the outstanding players were Capt. Pomeroy, Yerks, Blaker, Woodward, LeGrande, and Murray. The results of the season were as follows:

Freshmen	19	V. M. I.	6
Freshmen	18	Richmond	6
Freshmen	26	Louisburg College	0
Freshmen	31	St. Johns	0
Freshmen	6	Washington and Lee	15
Freshmen	0	Norfolk Division	13



FRESHMAN BASKETBALL

Playing an excellent brand of basketball, the Indian Freshmen went through an eleven game schedule with but two losses. Outstanding were Elmore, Mitchell, Blaker, Roy, Turner, and Wilson.

THE SCHEDULE

Freshmen	41	Norfolk Division	31
Freshmen	37	Hampton	17
Freshmen	60	Charlottesville	10
Freshmen	37	Campbell College	10
Freshmen	32	Norfolk Division	27
Freshmen	13	Virginia Freshmen	30
Freshmen	52	Lewisburg College	16
Freshmen	35	Wilson High	31
Freshmen	27	John Marshall	24
Freshmen	25	Richmond Freshmen	32
Freshmen	27	Apprentice	26



FRESHMAN BASEBALL

The Freshman baseball team, led by Captain Shade, were victorious in every game of the 1932 season. The squad was composed of Alexander, Cardillo, Crowl, Dameron, Jester, Johnson, Kahn, Knight, Lewis, Manning, Shade, Shreives, Smith, Stewart, Womble, Worrell, and Yakavonis, many of whom are doing excellent work on the '33 varsity.



JEFFERSON WALK

WOMEN'S SPORTS



DIRECTORS OF WOMEN'S ATHLETICS

Miss Martha Barksdale

Mr. Tucker Jones

Miss Wynne-Roberts

ATHLETIC COUNCIL

Margaret Irving

Virginia Hurdle

Amelia Fisher

Miss Roberts

President

Treasurer

Secretary

Mr. Jones

Miss Barksdale



The Athletic Council



WICKHAM
Manager

WEAVER
Captain

BARKSDALE
Coach

HOCKEY



Holliday, Cubberly, Booth, Irving

HOCKEY

The Alumni game, which was played on October 29, officially opened a successful season for the Indiannette Hockey team. The Varsity defeated a team made up of such stars as "Curley" Sinclair, Vivian Dreyer, Lois Roberts, "Pat" Lowrey, and "Mike" Brame, in addition to Coaches Barksdale and Wynne-Roberts, by a score of 3-1. The Varsity goals were scored by Reilly (2) and Hudak (1). Coach Barksdale scored the single point for the Alumni.

The next event on the schedule was the Harrisonburg game on November 5, when the Indiannettes defeated the Teachers, 4-1. The Harrisonburg outfit showed the loss of several of last year's players who materially aided them in capturing the State championship in 1931. Hudak, center forward, was high scorer in this game, scoring three goals to one by Reilly.

On November 11 the team journeyed to Sweet Briar for the Virginia-North Carolina tournament, where it met its first and only defeat of the season. The William and Mary players succumbed to a swift and well-coached Sweet Briar outfit in the final seconds of play. The final score, 2-1, was the result



Ross, Kolb, Weaver, Lafitte



Hudak, Berger, Stutz, Fries

of a slip in the unusually good backfield machinery of the Squaws. The following day the Indiannettes defeated Westhampton in an equally speedy match, 2-1. This is the second consecutive victory for the William and Mary Co-Eds over Westhampton.

Two teams were picked from the assembled Collegiate players, an All-College team and a Reserve team. There were six William and Mary players on these teams, Holliday, Kolb, and Stutz on the All-College, and Reilly, F. Booth and Lafitte on the Reserve.

The final game of the year was played in Baltimore, when the Indiannettes defeated a Baltimore Reserve team 5-1 on a very wet field. This victory was one of the events marking the close of the South-Eastern' tournament, held in Baltimore the week-end of November 19. The 1932 team consisted of Holliday, Reilly, Hudak, Irving, Kolb, Stutz, Booth, Beck, Weaver (Captain), Lafitte, and Berger; substitutes were: Ross, Edwards, Brown, Cubberly, and Fries. In a meeting of the squad held December 15, Dorothy Lafitte was elected Captain for next year and Alice Brown manager, to succeed Maud Weaver and Honore Wickham.



The Varsity Squad



MONOGRAM CLUB

Weaver
Hudak
Lafitte
Holliday
Beck
Kolb
Reilly

Irving
Fries
Cubberly
Booth
Simes
Stutz
Berger
Brown

Hurdle
Oewell
Mitchell
Felts
Dreyer
Dunleavy
Romm



HURDLE
Manager

HUDAK
Captain

BARKSDALE
Coach

BASKETBALL



Drier, Irving, Hudak, Blanchard

BASKETBALL

The first game of the season was played on the home court against the alumni of the college. In this game the alumni showed that they had not lost any of their skill as basketball players since leaving their Alma Mater. The alumni team made a brave showing but were unable to cope with the varsity. The score was 32 to 25 in favor of the local team.

An old rival of William and Mary, Sweet Briar, played here on February 18 and again met defeat with a score of 18 to 17. This was the closest game of the season and was a credit to both the visiting team and the Indiannettes. Hudak as guard played a particularly good game.

Perhaps the fastest game of the season was played against the State Teachers College at Farmville. Through the entire game the guards made long passes from their territory to the forwards, which kept up the speed of the game. They also made a point of guarding the basket instead of their forwards. The



Hoin, Holliday, Willcox, Booth



Cubbéiv, Mitchell, Stutz, Berger

score at the end of the second half was against our team 27 to 13, and added another victory for Farmville to that of last year.

The team played three games on its annual trip north, meeting Savage, March 3, Panzer, March 4, and Upsala, March 6.

The game with Savage was very good and at first the Squaws showed up well, making the score a tie at the end of the third quarter. However, the Savage team proved too much for William and Mary, and rallying in the last quarter won a victory with the score of 23 to 14.

The Panzer game was the best of the year. It was a clean, hard played game and a credit to our team. Holliday, forward, played a beautiful game, and Willcox as side center shouldered her responsibility well. This game proved another score for the Indiannettes with 23 points to the opponent's 17.

The last game of the year with Upsala made a good ending to a very successful season. The score was 53 to 14 in favor of William and Mary. Horn as forward and Berger as guard showed up well.



The Squad



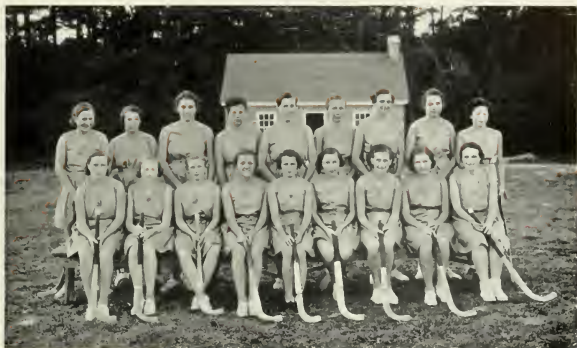
TENNIS

The 1932 tennis season ended with a total of three victories and no defeats. Under the leadership of Francis Booth and the valuable aid of Elsie Hudak, the Indianettes vanquished N. Y. U., Swarthmore College, and Beaver College.

Janet Simes was elected manager and Francis Booth was re-elected captain for the '33 season, which has not yet begun as the Echo goes to press.



LACROSSE



FRESHMAN HOCKEY

The Freshman Hockey season culminated in a game played with St. Catherine's in Richmond, which the Freshmen lost, 3-0. This annual tilt has been a function of several years standing. The line-up for this game was: L.W.—Darling, L.I.—Edwards, C.F.—Palmer, R.I.—Nickum, R.W.—Horn; R.H.—Smith, C.H.—Sterling, L.H.—Blanchard, R.B.—Mann, L.B.—Cummings; Goal—Dawson; Substitutions—Sanford, Torrence, Berry, and L. Sanford.



APPARATUS CLUB



TRACK

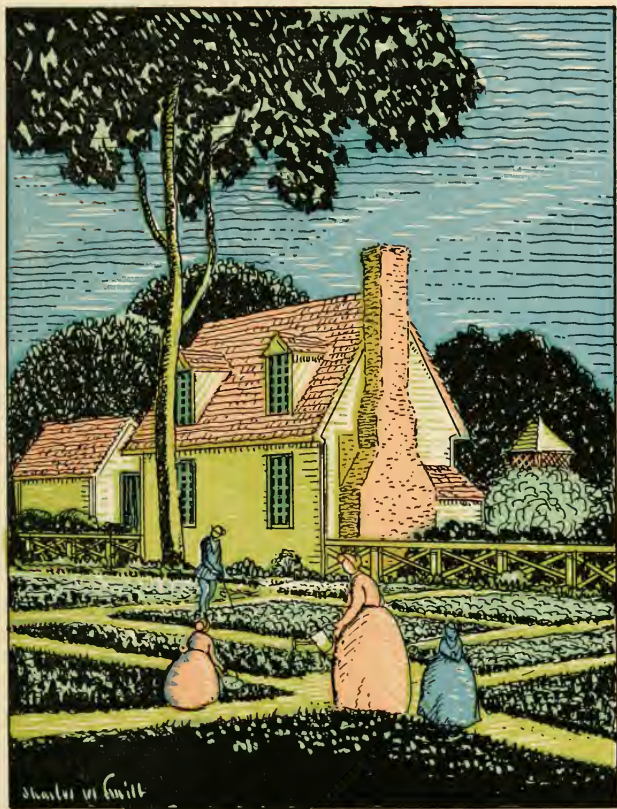
The Co-Ed Track activities end in an annual meet every May. Last year, Pearl Young, Captain, was easily an outstanding figure. She held records in the dashes and jumping events. Miss Young recently justified this distinction by setting a new world's record for women in the 50 meter dash.

Jane Owell was elected captain for the 1933 season, while Margaret Yeaman was elected manager.



BASEBALL

Baseball, an inter-mural sport at William and Mary, enlists many players from the campus. At the time of the printing of this book, the names of the prominent players are not available.



All Sundown the Paradise Garden Invites Attention



THE CAMPUS FROM BARRETT HALL

FEATURES

SPONSORS

- Miss Katherine Eilers for The Colonial Echo
Miss Margaret Clark for The Flat Hat Club
Miss Helen Dodge for The Flat Hat
Mrs. I. L. Deal for Men's Honor Council
Miss Virginia Hawthorne for Omicron Delta Kappa
Mrs. N. J. Christensen for the Men's Student Body
Miss Frances Ripley for Baseball
Miss Lorraine Emory for Football
Miss Mary Taylor Withers for Track
Miss Katherine Spratley for Basketball
Miss Flora Willcox for the Senior Class
Miss Ann Price for the Cotillion Club
Miss Thelma Bolton for the Board of Control



Miss Katherine Eilers, Sponsor for The Colonial Echo



Miss Margaret Clark, Sponsor for the Flat Hat Club



Miss Helen Dodge, Sponsor for The Flat Hat



Mrs. I. L. Deal, Sponsor for the Honor Council



Miss Virginia Hawthorne, Sponsor for Omicron Delta Kappa



Mrs. N. J. Christensen, Sponsor for Men's Student Body



Miss Frances Ripley, Sponsor for Baseball



Miss Lorraine Emory, Sponsor for Football



Miss Mary Taylor Withers, Sponsor for Track



Miss Katherine Spratley, Sponsor for Basketball



Miss Flora Willcox, Sponsor for Senior Class



Miss Ann Price, Sponsor for Cotillion Club



Miss Thelma Bolton, Sponsor for Board of Control



Miss Minnie Cole Savage, Queen of the May, 1933



Miss Lelia Chewning, Queen of the May, 1932

M A Y D A Y

May, 1932



May Day

MAY DAY

May Day, 1932, using a Grecian motif, was carried out in strict simplicity. All costumes were simple robes, in pastel colors, which made a beautiful contrast with the woodland background.

Perhaps the most impressive part of the ceremony was the crowning of Miss Lee Chewning, the new queen, by the old queen, Miss Claire Hargrove. This officially opened the program for the day.

May Day, 1933, was carried out in the Colonial style, which harmonizes so well with the atmosphere of the college. Miss Minnie Cole Savage, by vote of the Women's Student Body, was chosen Queen of the Day.



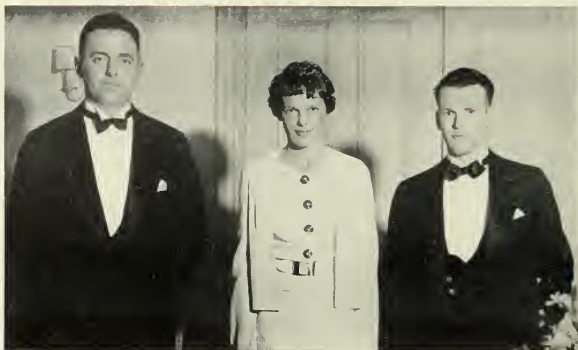
The Court



Photo by U. S. Army Air Corps.

THE COLLEGE FROM THE AIR

AERONAUTICS



COLONEL POPP

AMELIA EARHART

TRAVERS HULSE

AMONG THE AIR-MINDED

Flying, and the practical science of flying, are not the only air-educational functions of the School of Aviation. Through co-operation of the Aeronautics Department and the Flight Club a number of nationally important aviation personalities have lectured at William and Mary in the past year. Amelia Earhart, who has crossed the Atlantic twice by air; Senator Hiram Bingham, president of the National Aeronautic Association; and Mr. H. J. E. Reid, Engineer-in-Charge, National Advisory Committee for Aeronautics, at Langley Field, have found occasion to share their aerial wisdoms with the College.

In this way, an active contact has been made with the business world of Aviation. Perhaps the soundest method of air-promotion is to give audience to the foremost people of the industry today, who did so much to bring aviation through its infancy to the state where over half a million passengers yearly utilize our airlines. The Air Program at William and Mary is still near its beginning, but it is doing a splendid work in familiarizing students with modern transportation trends.



IN the continuance of its two hundred and forty year old habit of making educational history for this country, the College of William and Mary created the first Flying School ever to be incorporated into the curriculum of an institute of higher learning. In this latest priority, the College provided equipment and opportunity for the student enthusiast to acquire a theoretical and practical flight education along with his or her college degree, and forecasted in practice one of the most important trends of future teaching.

For a number of years modern educators have evaded the issue of student flying, although a number of our colleges and universities offer theoretical courses in Aeronautics. There is a slight responsibility attached to the official sanction of Flight Courses on the part of a college president, in view of the erroneous public impression of physical danger in flying. Aviation, in other schools, had to take its problems to student-formed clubs. At William and Mary, Dr. Chandler's air-minded views found expression in the installment of a School of Aeronautics.

There are just a few colonial echoes that voice reasons for this daringly pioneer step. In 1786, just three years after the first aerial voyage by man, a student-organized contingent of Balloon-addicts was formed on the William and Mary campus with the sanction of that earlier air-minded educator, James Madison, eighth



president of the College. Dr. Madison regarded Aerostation as "a philosophical experiment" that would play an important role in future transportation trends. Balloons were raised from the Court House green.

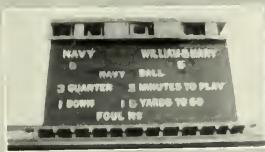
Years later, the desire for earth-born wings manifested itself in the form of a Glider Club, which soon gave way to the more practical field of motor flying. In 1931, a modern brick and steel building, comprising offices, hangar, and shops, was erected on the newly completed airport about a mile north of the Campus. In Rogers Science Hall, a classroom and laboratory were set aside for the teaching of aviation theory, and practical flying became a regular part of the William and Mary curriculum.

Lieutenant-Colonel Earl Charles Popp was appointed Director of the School of Aviation, and with the able assistance of Lieutenant Yelverton Kent, and Julian A. C. Chandler, Jr., he brought air-mindedness to the College. In the two years that the Flight School has been here, approximately seventy students have received aeronautical training and forty have qualified for government flight licenses of various degrees.

Colonel Popp's method, which stresses a psychological observance of the student and his reactions to flying, plus the safety factor of quality equipment, is largely responsible for the fact that there has not been an accident in Flight work in the two years that it has been taught. A thorough mechanical inspection of aircraft, parachutes, and student application of practical aeronautics theory learned in the Ground School, go to increase the factors of safety in flying.

Out of the Department of Aeronautics grew the William and Mary Flight Club, which was awarded third place and prize in the Loening Inter-Collegiate Flight Competition in 1932. The Flight Club sponsors and arranges programs for the furtherance of aviation interest on the Campus. The outstanding event of the year was the advent of Miss Amelia Earhart, an honorary member of the Club, who addressed the College on modern aviation.

In the course of two college years, about forty student pilots have been trained for licenses varying from that of Private Pilot through the official Transport, or highest flight rating. Although these figures represent a greater number of flyers than have been turned out in a similar length of time by any other Collegiate flight club or organization, still the highest value of William and Mary's latest priority is a thing for the future to realize. There is an aura of mistaken impressions existing in the opinions of the American public that must be overcome before this nation can realize the real benefits of modern aviation. There is a vast field of business and industry to be exploited by pioneer bird men. There are a thousand ways to apply aeronautics to modern and future efficiency in all arts and sciences, and above all there is a practical psychological value that adds an advantage to the art of living life.



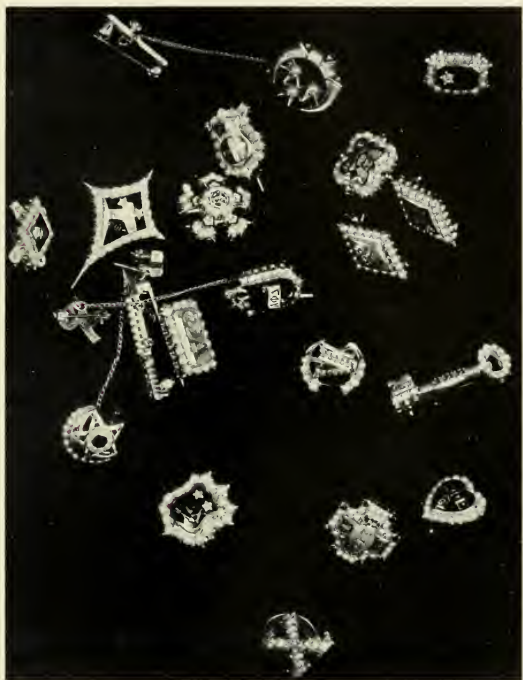
Snapshots Around the Campus and Outside



Governors Convention, April, 1932



A Silvery Moon, Deep Blue Shadows, and Romance



FRATERNITIES



THETA DELTA CHI

Founded at Union College, 1847

EPSILON CHARGE

Established 1853

Fratres in Facultate

J. C. Chandler

Dr. W. T. Hodges

Dr. R. C. Young

Fratres in Urbe

William Bozarth

R. P. Wallace

John Warburton

Herbert Chandler

C. E. Chandler

Fratres in Collegio

1933

Raymond J. Carroll	Norfolk, Va.
William Mueller	Jersey City, N. J.

1934

G. Louis Carner	Norfolk, Va.
H. Jackson Darden	Norfolk, Va.
Donald Gordan	Norfolk, Va.
Franklin Hall	Loneview, Va.
Cecil Harper	Cape Charles, Va.
Arthur Hart	Montclair, N. J.
Emil Johnson	McKeesport, Penna.
John E. MacDonald	Ocean City, N. J.
C. Littleton Upshur	Norfolk, Va.
James R. Warner	Cranford, N. J.
John C. Watson	Salem, Va.

1935

Joseph M. Bridges	Richmond, Va.
Gardner Brown	Brookline, Mass.
Roland B. Hall	Easton, Penna.
Bland Hoke	Williamsburg, Va.
John N. Lewis	Cranford, N. J.
Moncure Little	Norfolk, Va.
James S. Mack	McKeesport, Penna.
Robert Mallowney	Brookline, Mass.
William Percival	Cranford, N. J.





SIGMA ALPHA EPSILON

Founded at University of Alabama, 1856

VIRGINIA KAPPA CHAPTER

Established 1857

Fratres in Facultate

Melvin Davis

Dr. J. H. Jackson

Fratres in Collegio

1933

Paul Broderick	Westboro, Mass.	Walter Pierce	Cumberland, Md.
Aime LeCroiz	Baltic, Conn.	Luther Phillips	Delmar, Del.
Ralph Murray	Long Beach, Cal.	Eugene L. Pleninger	Boston, Mass.
Lucius McElrath	Macon, Georgia	Herbert Spencer	Newport News, Va.

1934

Calvin Branch	Petersburg, Va.	Murray Harrison	Norfolk, Va.
L. M. Bolton	Long Beach, Cal.	Arthur Vaughan	Franklin, Va.
Milton Gallinant	Ridgefield Park, N. J.	Harry Murphy	Suffolk, Va.

1935

Edward Boisteau	Petersburg, Va.	Elwood Spencer	Newport News, Va.
Ralph Anderson	Ridgefield Park, N. J.	Rufus Knight	Boikins, Va.
Fred Eidsness	Washington, D. C.	William Robertson	Teaneck, N. J.
Cabel Franklin	Lynchburg, Va.	Waddill D. Stewart	Richmond, Va.
Frank Manning	Teaneck, N. J.	Charles B. Shade	Richmond, Va.
Harvey L. Smith	Richmond, Va.	Chester Starkey	Roanoke, Va.



PI KAPPA ALPHA

Founded at University of Virginia, 1868

GAMMA CHAPTER

Established 1871

Fratres in Facultate

R. G. Todd

Fratres in Urbe

Dr. W. L. L. Smoot
William Henley

Vaughn Woodward

B. E. Steel
Monier Williams

Fratres in Collegio

1933

Thomas M. Barkley	Winston-Salem, N. C.
Carlton Casey	Williamsburg, Va.
Francis W. Hull	Hamden, Conn.
Mortimer G. Jaffee	New York, N. Y.

1934

Willard Owen	Bluefield, Va.
Charles K. Sparrow	Martinsville, Va.

1935

George W. Bishof, Jr.	Scarsdale, N. Y.
Garrett T. MacEwan	Keyport, N. J.
Blake T. Newton, Jr.	The Hague, Va.





KAPPA ALPHA

Founded at Washington and Lee University, 1865

ALPHA ZETA CHAPTER

Established 1890

Fratres in Facultate

Dr. J. A. C. Chandler
L. Tucker Jones

Thomas J. Stubbs
John L. Lewis

Fratres in Urbe

Ashton Dovell
Sydney Brooks

John Ethridge
James Cogger

Fratres in Collegio

1933

Thomas H. Ayers
Theron P. Bell
Wilbur D. Barton
J. A. C. Chandler, Jr.

Petersburg, Va.
Machipongo, Va.
Dover, Del.
Williamsburg, Va.

1934

Sterling Chambers
J. Douglas Hubard
Robert H. Land
Henry C. Land, Jr.

Blackstone, Va.
Norfolk, Va.
Surry, Va.
Surry, Va.

1935

Richard B. Balthis
Branch Bocock, Jr.
H. Aulick Burke
Joseph H. Howerton
John A. MacManus
John A. Mapp
John M. Mottingham

Roanoke, Va.
Williamsburg, Va.
Petersburg, Va.
Clarksville, Va.
Wilmington, Del.
Accomac, Va.
Chertton, Va.
A. Addison Roberts

James McPeery
Woodis R. Scott
Talmage T. Talley
Roland L. Waterfield
William A. Pleasants, Jr.
Philip M. Pratt
Joseph B. Prince, III
Eastville, Va.

Tazewell, Va.
Cape Charles, Va.
Clarksville, Va.
Nandua, Va.
Hampton, Va.
Forest Glen, Md.
Peters. org, Va.





KAPPA SIGMA

Founded at University of Virginia, 1869

NU CHAPTER

Established 1890

Fratres in Urbe

Otis M. Geddy

Vernon M. Geddy

George P. Coleman

Bathurst D. Peachy

William Person

Edward D. Spencer

William K. Fetzer

Fratres in Facultate

J. Wilfred Lambert

Fratres in Collegio

1933

Thomas M. Halligan	Clifton Forge, Va.
Harry L. Humphreys	Philadelphia, Penna.
Herbert H. Leach	New Brunswick, N. J.
Wallace H. Lynn	Manassas, Va.
Harold T. Sheehan	Richmond, Va.
Wilfred M. Woodward	New Brunswick, N. J.

1934

Jourdan M. Burke	Norfolk, Va.
Wayne T. Dimm, Jr.	Newport News, Va.
W. Carey Pennington	Kinsale, Va.
William B. Taliaferro	Norfolk, Va.
Rafael B. Watts	Southington, Conn.

1935

Richard T. Akers	Stuart, Va.
Allen W. Ayres	Staunton, Va.
Willington A. Coard	Accomac, Va.
Leonard L. Graves	Williamsburg, Va.
William J. Harman, Jr.	Pulaski, Va.
Walter G. Humphrey	Redbank, N. J.
William E. Kendall	Washington, D. C.
George W. Perkins	South Orange, N. J.
Walter R. Talmage	Petersburg, Va.
Joseph W. Taylor	South Orange, N. J.
John A. Wilkinson, Jr.	Richmond, Va.
William A. Winfree, Jr.	Chester, Va.



Sigma Phi Epsilon

Founded at University of Richmond, 1901

VIRGINIA DELTA CHAPTER

Established 1904

Fratres in Urbe

Yelverton O. Kent

Duncan M. Cocke

William R. Rountree

Fratres in Facultate

Dr. Albion G. Taylor

Graduate Students

Armstrong Smith, '29

Lloyd M. Johnson, '32

Fratres in Collegio

1933

Edwin D. J. Meade	Babylon, N. Y.
Barrett Roberts	Brookline, Mass.
Morgan R. O'Neill	Brookline, Mass.
A. Frederick Eilers	Richmond, Va.
Morris F. Elliott	Philadelphia, Pa.
William J. Casey	Roxbury, Mass.

1934

Joseph Stankus	Thomas, W. Va.
Jefferson E. Davis	Hilton Village, Va.
Leonard E. James	Dendron, Va.
Joseph Lee Mann	Hampton, Va.
Steed Keeling	Hampton, Va.
Dale Worrall	Attleboro, Mass.
Robert Downs	Lansdowne, Pa.

1935

William J. Slocum	Belmont, Mass.
George Robert Hewes	Philadelphia, Pa.
James A. Bragan	Dorchester, Mass.
Harrell Pierce	Sunbury, N. C.
Henry Whyte, Jr.	Norfolk, Va.





SIGMA NU

Founded at Virginia Military Institute, 1868

EPSILON IOTA CHAPTER

Established 1922

Fratres in Urbe

Mason B. Peebles

Edwin L. Toone

Fratres in Facultate

Dr. Joseph Roy Geiger

Benjamin Thomas Painter

Fratres in Collegio

1933

Benjamin P. Burrow	Disputanta, Va.
J. Roland Johnston	Springdale, Penna.
R. Bruce Johnston	Williamsburg, Va.
James H. Littlepage	Washington, D. C.
Owen E. McBride	Washington, D. C.
Charles P. McCurdy, Jr.	Washington, D. C.
Calder S. Sherwood, 3rd	Portsmouth, Va.
William H. Savedge, Jr.	Wakefield, Va.

1934

Don A. Beecher	Mason City, Iowa
Richard R. Conlen	Aubudon, N. J.
Donald S. Douglass	Catasauqua, Penna.
Edgar A. Everhart	Buffalo, N. Y.
Robert E. Fifield	Painesville, Ohio
James E. Jobbins	Jenkintown, Penna.
Arthur R. Kelly	Brockton, Mass.
Preston Lyons	Manassas, Va.
Robert W. Ramsay	Needham Heights, Mass.
Otis C. Southern	St. Petersburg, Fla.

1935

Thomas L. Beitel	Catasauqua, Penna.
Carl E. Giles	Marblehead, Mass.
John Hocutt	Newport News, Va.
William Mitchell	Newport News, Va.
Douglas A. Rahn	Easton, Penna.
Joseph O. Saunders	West Point, Va.
Ralph W. Stambaugh	Pulaski, Va.
Charles Weinbrun	Richmond, Va.





PHI KAPPA TAU

Founded at University of Miami, 1906

ALPHA THETA CHAPTER

Established 1926

Frater in Facultate

Dr. Charles F. Marsh

Graduate Student

Thomas G. McCaskey

Frateres in Collegio

1933

Joseph W. Cochran
Dallas E. Entsminger
William R. Harkins
Charles S. Thomas, Jr.
Lynwood Wilson
G. Ruffin Winfree

Stuarts Draft, Va.
Newport News, Va.
Plymouth, Mass.
Hampton, Va.
Crewe, Va.
Richmond, Va.

1934

Ernest J. Colbourn
James Radcliffe, Jr.

Newport News, Va.
Acushnet, Mass.

1935

David W. Agnew
Williams F. Collins, Jr.
Charles B. Fuller, Jr.
John A. Hillier, Jr.
Lloyd Langbauer
Ralph E. Ladd, Jr.
J. O. Manly, Jr.
Earl B. Morden
William F. Muebach
Cameron E. Ogden
John Charles Sheppard
Richard Velz
Franklin D. Wilson

Passaic, N. J.
Richmond, Va.
Waltham, Mass.
Braintree, Mass.
Hamilton, Ohio
Ipswich, Mass.
Stamton, Va.
Bad Axe, Mich.
Marshfield, Wis.
Montclair, N. J.
Cambridge, Ohio
Poughkeepsie, N. Y.
Washington, D. C.



LAMBDA CHI ALPHA

Founded at Boston University, 1909

EPSILON ALPHA ZETA

Established 1927

Fratres in Urbe

Robert B. Wynne

Calvin J. Charnock

Fratres in Facultate

Wayne F. Gibbs

Fratres in Collegio

1933

Sumner H. Waters Great Neck, L. I.

1934

Frances H. Bark Philadelphia, Pa.
Emerson Bosley Toledo, Ohio
Robert L. Brown Elmira, N. Y.
William H. Mercer Whitestone, Va.
James L. Ramsey Crewe, Va.
James A. Schiavone Caldwell, N. J.
Edwin W. Vaughan Norfolk, Va.

1935

John E. Hessian Forest Hills, L. I.
William Schmiedel Cranford, N. J.
Christian Sorensen Cranford, N. J.
David W. Young Clarendon, Va.





PHI ALPHA

Founded at George Washington University, 1914

TAU CHAPTER

Established, 1927

Fratres in Collegio

1933

Leo Minskoff	New York City
Armand J. Caplan	Portsmouth, Va.
Harold Balkan	Roxbury, Mass.

1934

Irving Silverman	Boston, Mass.
Peter Baggish	Hartford, Conn.
Myron Aranovitz	Brookline, Mass.
William Rose	Chelsea, Mass.
Harry Spack	Dorchester, Mass.
David Matzkin	New York City
Henry Perzekow	Newport News, Va.

1935

Norman Weinberger	Long Beach, N. Y.
Sidney Maislin	Hartford, Conn.
Nathan Plaks	New York City
Murray Polsky	New York City
Alvin Kass	New York City
Harold Wolff	New York City





ALPHA PHI DELTA

Founded at Syracuse University, 1913

BETA GAMMA CHAPTER

Established 1930

Fratres in Collegio

1933

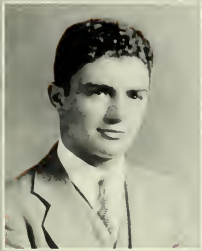
Edward Coppola	Brooklyn, N. Y.
Joseph A. DeGange	New London, Conn.
James J. Digangi	Norwich, Conn.

1934

Frank A. Barber	Norwich, Conn.
Joseph Cardillo, Jr.	New York City, N. Y.
William J. Palese	Camden, N. J.
John A. Penello	Norfolk, Va.

1935

John E. Cardillo	New York City, N. Y.
Michael Cifelli	Princeton, N. J.
Joseph Serra	Norwich, Conn.





SIGMA PI

Founded at Vincennes University, 1897

ALPHA ETA CHAPTER

Established 1931

Fratres in Facultate

Dr. R. L. Morton

Fratres in Urbe

Ray Edwards

James Stone

Thomas Waterman

Lloyd Williams

Fratres in Collegio

1933

Andy Christensen	Hopewell, Va.
Joe Cridlin	Jonesville, Va.
John Eastham	Culpeper, Va.
Lambert Harper	Harpersville, Va.
Norman King	Haynesville, Va.
William T. Marsh	Northern Neck, Va.

1934

Ben Chapman	Greenbackville, Va.
William Cholko	Bridgeport, Conn.
Winfield Hammond	Greenbackville, Va.
Allan S. Kennedy	Turners Falls, Mass.
Mark Woodward	Washington, D. C.

1935

Donald Brockway	Clinton, N. Y.
Loren Burrows	Hopewell, Va.
Woodrow Graves	Boulevard, Va.
Frank Pretlow	Suffolk, Va.



PI LAMBDA PHI

Founded at Yale, 1895; Restored at Columbia, 1908

PSI CHAPTER

Established 1929

Fratres in Collegio

1933

Melvin Blumenthal	Hartford, Conn.
Leon Rubin	Hartford, Conn.
Leslie Legum	Baltimore, Md.
Joseph Schenk	New York City

1934

Melvin Caplin	Brookline, Mass.
Sidney Gould	Brookline, Mass.
Bruce Jacobi	Brooklyn, N. Y.
Jack Lambeck	Brooklyn, N. Y.

1935

Edwin Kerner	New York City
George Reizen	Providence, R. I.
David Glasser	New York City
Melvin Gross	Hartford, Conn.
Norman Lanz	Ossing, N. Y.

1936

Daniel Shapiro	Brookline, Mass.
Harold Freeman	New York City
S. C. Tulin	Hartford, Conn.





CHIOMEGA

Founded at University of Arkansas, 1895

OMICRON BETA CHAPTER

Established 1921

Sorores in Urbe

Mrs. R. P. Wallace
Mrs. Van Garrett
Mrs. A. L. Meisel
Mrs. G. T. Brooks

Mrs. S. P. Morehead
Mrs. R. D. McCreary
Mrs. J. R. Geiger
Mrs. Milton Grigg

Harriet Garrett
Katherine Brooks
Margaret Bridges
Fanny Mills

Sorores in Collegio

1933

Frances Bell	Suffolk, Va.	Alice Edwards	Lynchburg, Va.
Jean Hyatt Norton, Va.	

1934

Anne Pharr	Charleston, W. Va.	Sue Lancaster	Ashland, Va.
Lorraine Emory	Aberdeen, Md.	Elizabeth Young	Elkhorn, W. Va.
Helen Ridgely	Washington, D. C.	

1935

Almeyda Whitehead	Chatham, Va.	Yetive Winslow	Crewe, Va.
Betty Carman	Quoque, N. Y.	Elizabeth Johnson	Smithfield, Va.
Dorothy Baden	Washington, D. C.	Margaret Yeaman	Ridgefield Park, N. J.
Helen Dodge	Douglaston, N. Y.	

Pledges

Anne Renforth	Yorktown, Va.	Dorothy Fraser	Hartford, Conn.
Elizabeth Armstrong	Rockaway, N. J.	Eleanor Gill	Dover, N. J.
Olive Anderson	Hackensack, N. J.	Margaret Hildebrandt	Newark, N. J.
Esther Beebe	Mountclair, N. J.	Annie Murray Hooker	Stuart, Va.
Margaret Brown	McIntosh, Fla.	Eleanor Hooker	Richmond, Va.
Helen T. Collings	Crewe, Va.	Mary Jean Roth	Lorain, Ohio
Martha Connelly	Morristown, Penn.	Lela Shewmake	Williamsburg, Va.
Alice Crutchfield	Sewickly, Penn.	Doris Terrell	Richmond, Va.
Shirley Easley	Long Island, N. Y.	Isabel Young	Elkton, Md.
Nancy Fletcher	Sperryville, Va.	Dallas Dalton	Richmond, Va.





KAPPA ALPHA THETA

Founded at Depauw University, 1870

BETA LAMBDA CHAPTER

Established 1922

Sorores in Urbe

Mrs. John Henderson

Peticolas Lee

Sorores in Facultate

Miss Emily Hall

Mrs. R. L. Fisher

Sorores in Collegio

1936

Margaret Clark	Washington, D. C.	Rebekah Lee	Fredericksburg, Va.
Druscilla Davis	Warrenton, Va.	Mary Hansford Wallace	Fredericksburg, Va.
Ruth Wills	Newport News, Va.	Mary Taylor Withers	Suffolk, Va.
Anne Hyatt	Richlands, Va.	Minnie Cole Savage	Williamsburg, Va.

1934

Jane Kemon	Washington, D. C.	Anne Spratley	Hampton, Va.
Winnifred Cory	Montclair, N. J.	Dorothy Littlepage	Norfolk, Va.
Helen Singer	Fort Meade, Md.	Janis Steel	Tazewell, Va.

1935

Elizabeth Chapin	Newton Center, Mass.	Helen Perkins	Auburndale, Mass.
------------------	----------------------	---------------	-------------------

Pledges

Sarah Dobbs	Atlanta, Ga.	Mary Morris Wright	Washington, D. C.
Margaret Dudley	Bluefield, Va.	Marion Hobbs	Bronxville, N. Y.
Margaret Ann Freeman	Bramwell, W. Va.	Margaret Wilson	Bolling Green, Va.
Helen Harwood	Williamsburg, Va.	Eleanor McCallum	Chillicothe, Ohio
Kitty Smoot	Williamsburg, Va.	Nancy Armistead	Norfolk, Va.
Emily Winship	Atlanta, Ga.	Dorothy Toulon	Norfolk, Va.





KAPPA KAPPA GAMMA

Founded at Monmouth College, 1870

GAMMA KAPPA CHAPTER

Established 1923

Sorores in Urbe

Mrs. Rutherford Goodwin

Mrs. Walter Bozarth

Mrs. H. E. Parker

Sorores in Facultate

Miss Margaret Wynne-Roberts

Sorores in Collegio

1933

Evelyn Cocke	Manassas, Va.	Virginia Jones	Williamsburg, Va.
Nancy Davis	Williamsburg, Va.	Marion Banks	St. Petersburg, Florida
	Ewell Crawford	Williamsburg, Va.	

1934

Virginia Horton	Mt. Vernon, N. Y.	Corleen Loeffler	Washington, D. C.
Anne Chalkley	.. Norfolk, Va.	Thomasia McClintic	Staunton, Va.
Byrd Gravatt	Blackstone, Va.	Alice Reasoner	Alton, Ill.
	Yvonne Christian	Norfolk, Va.	

1935

Anne Bradford	Staunton, Va.	Anne Nenzel	Richmond, Va.
Harriet Council	Suffolk, Va.	Mildred Refo	Norfolk, Va.
Virginia Mister	Capeville, Va.	Ruth Cobbett	Morristown, N. J.
	Mary Margaret Brooks	Williamsburg, Va.	

Pledges

Anne Poindexter	.. Morrison, Va.	Jane Duggar	St. Louis, Mo.
Margaret Davis	East Orange, N. J.	Gloria Garnett	Evanston, Ill.
Rosalind Henderson	Williamsburg, Va.	Ina Collier	Norfolk, Va.
Elizabeth Crouse	Hampton, Va.	Jean Wilson	Washington, D. C.
Nancy Jones	New York, N. Y.	Nancy Peoples Norfolk, Va.
Elizabeth Gordon	Easton, Penn.	Helen Kimmel	.. Richmond, Va.
Annah Thomas	Bristol, Vt.	Mary Horton	Mt. Vernon, N. Y.
Marion Dowding	East Orange, N. J.	Jane Stanger Cranford, N. J.
Elizabeth Jackson	Bethesda, Md.	Mary Porter	Washington, D. C.
Elizabeth Feitzer	Chevy Chase, Md.	Jean Lee	Williamsburg, Va.





PI BETA PHI

Founded at Monmouth College, 1867

VIRGINIA GAMMA CHAPTER

Established 1925

Sorores in Urbe

Mrs. D. J. Blocker

Mrs. J. G. Warburton

Mrs. Floyd Ayco

Miss Alice Person

Sorores in Collegio

1933

Gladys Monroe	Savannah, Ga.	Elizabeth Chambers	Baltimore, Md.
Dorothy Trent	Portsmouth, Va.	Lettie Hairston	Roanoke, Va.
	Lillee Smith	Capron, Va.	

1934

Nancy Delashmutt	Arlington, Va.	Virginia Clark	Balboa, Canal Zone
Ann PettyArlington, Va.	Jane Clark	Balboa, Canal Zone

1935

Ann Price	Marlington, W. Va.	Ruth Kolb	Baltimore, Md.
Grace Heard	Richmond, Va.	Francis Lamar	Charleston, S. C.

Pledges

Eliza Goldsborough	Denton, Md.	Rae Hannah	Summit, N. J.
Sarah St. Clair	Latrobe, Pa.	Polly Lucas	Brown's Mill on the Pond, N. J.
Jane Ayers	Williamsburg, Va.	Frances Anderson	Boston, Mass.
Jane Steele	Washington, D. C.	Elizabeth Jones	Norfolk, Va.
Mildred Heinemann	Kansas City, Mo.	Ann Weaver . .	Front Royal, Va.
Betty Reeves	Garden City, N. Y.	Alice Dougherty	Lexington, Ky.
Edith Boyd.	Garden City, N. Y.	Betty Watson	Roanoke, Va.





PHI MU

Founded at Wesleyan College, 1852

Sorores in Urbe

Mrs. Branch Bocock

Sorores in Collegio

1933

Rachel Black	Washington, D. C.	Rhoda Pratt	Dedham, Mass.
Mary Butterfield	Washington, D. C.	Marjorie Smith	Norfolk, Va.
Catherine Cubberly	Norfolk, Va.	Eleanor Towers	Denton, Md.
Margaret Neale	Washington, D. C.	Flora Wilcox	Petersburg, Va.

1934

Anne Booth	Danville, Va.	Edith Hester	Danville, Va.
Sophie Croxton	West Point, Va.	Harriet Pittard	Clarksville, Va.
Virginia Goodman	Ronceverte, W. Va.	Mary Raleigh	Roanoke, Va.
Edna Bland Hall	Newport News, Va.	Clare Thompson	Elizabeth City, N. C.
Edna Watkins		Emporia, Va.	

1935

Juliette Croxton	West Point, Va.	Marguerite Stribling	Richmond, Va.
Adelaide Mason	Detroit, Mich.	Sue Stickle	Forest Hill, N. Y.

Pledges

Dorothy Ford	Norfolk, Va.	Sarah Hunt	Pequosin, Va.
Mary Lee Edmunds	Danville, Va.	Ellen Seller	Ridgeway, N. J.
Muriel Wymon	Dedham, Mass.	Virginia Vedder	Marshfield, Wis.
Doris VanDien	Essex Falls, N. J.	Ruth Robinson	Norfolk, Va.
Pamella Craft	Phoebus, Va.	Katherine Watkins	Emporia, Va.



ALPHA CHI OMEGA

Founded at DePauw University, 1885

BETA DELTA CHAPTER

Established 1926

Sorores in Urbe

Mrs. W. T. Hodges	Althea Hunt
Mrs. Melville Jones	Laura Calvin
Mrs. J. T. Zaharov	Kathleen Alsop
Mrs. J. C. Chandler	Alice Trevett

Mac Chandler

Sorores in Collegio

1933

Francis Beckerle	Wilmington, Del.	Anne Shiawen	Altavista, Va.
Georgia Belle Bennett	Richmond, Va.	Margaret Thompson	Hampton, Va.
Virginia Romm	Norfolk, Va.	Catherine Wood	Richmond, Va.

1934

Winifred Freiert	Washington, D. C.	Margaret Ross	Ridgewood, N. J.
Louise Lang	Jackson Heights, N. Y.	Bettina Sargeant	Washington, D. C.
	Elizabeth Toler	Norfolk, Va.	

1935

Helen Davis	Richmond, Va.	Billie Pfeil	Maplewood, N. J.
Hallie Jane Dill	McKeesport, Pa.	Virginia Rawlings	Birds Nest, Va.
Dorothy Dunlap	Blackstone, Va.	Elibabeth Robinson	Warenton, Va.
Dorothy Ela	Wollaston, Mass.	Carole Stetson	Elyria, Ohio

Pledges

Elizabeth Brown	Wilmington, Del.	Delphine Jones	Atlanta, Ga.
Huldah Dimmitt	Norfolk, Va.	Priscilla Nickerson	Wollaston, Mass.
Marguerite Fuller	Newton, Mass.	Elizabeth Nichols	Purcellville, Va.
Margaret Giffin	Washington, D. C.	Doris Robinson	Monongahela, Pa.
Mary Alice Grantham	Toano, Va.	Joyce Smith	Binghamton, N. Y.
Jane Grantham	Toano, Va.	Elizabeth Underhill	Flushing, N. Y.
Dorothy Grantham	Toano, Va.	Margaret Watherwax	Cheriton, Va.
Ollie Darling	New York, N. Y.	Eloise Whitehead	Petersburg, Va.





KAPPA DELTA

Founded at Farmville State Teachers College, 1897

ALPHA PI CHAPTER

Established 1928

Sorores in Urbe

Mrs. R. P. Cook
Mrs. Charles Marsh

Annie Bozarth
Lucille Foster

Sorores in Collegio

1933

Honore Wickham	Newark, N. J.	Mae Rennolds	Center Cross, Va.
Page Johnson	Danville, Va.	Elizabeth Garrow	Denbigh, Va.

1934

Aubrey Holladay	Orange, Va.	Mary Abbitt	Norfolk, Va.
Mary K. Jean	Harrisburg, Va.	Mary Duvel	Washington, D. C.
Bessie White	Roanoke, Va.	Mamie Leigh	Dreweryville, Va.
Edith Manning	Washington, D. C.	Elizabeth Poindexter	Laurenceville, Va.
Charlotte Allen	Philadelphia, Pa.	Nancy Lewis	Tappahannock, Va.
Helene Donnelly	Philadelphia, Pa.	Francis Meador	Roanoke, Va.
June Smith	Freehold, N. J.		

1935

Mary Curtis Coker	Williamsburg, Va.	Virginia Saunders	Richmond, Va.
Katherine Chiswell	Washington, D. C.	Pauline Stanley	Cranford, N. J.
Frances Goodrich	Washington, D. C.	Margaret Rutherford	Philadelphia, Pa.

Pledges

Dixie Sterling	Philadelphia, Pa.	Ethel Lee Cross	Richmond, Va.
Helen Conner	Tenec, N. J.	Elizabeth Ware	Dunsville, Va.
Anne Pohlig	Richmond, Va.	Adele Stephenson	Ivor, Va.
Letitia Powell	Richmond, Va.	Corinne Wall	South Hille, Va.
Mary Vaiden	Richmond, Va.	Bernice Burton	Plant City, Fla.
Anna Winn	Roanoke, Va.	Florence Evens	Clarendon, Va.
Ella Mae Bristow	Tappahannock, Va.	Mable Hadley	Philadelphia, Pa.
Kate Bristow	Tappahannock, Va.	Dorothy Prince	Lawrenceville, Va.





DELTA DELTA DELTA

Founded at Boston University, 1888

ALPHA MU CHAPTER

Established 1928

Sorores in Urbe

Mrs. William Guy
Mrs. K. J. Hoke

Miss Frances Ford
Mrs. A. E. Kendrew

Mrs. J. H. Jackson

Sorores in Collegio

1932

Elizabeth Lawder Richmond, Va.

1933

Lucie Grossman Petersburg, Va. Elizabeth Brunstetter Williamsport, Penn.
Minnie Mae Shreves West Fall Church, Va. Elizabeth Ridout Roanoke, Va.
Mary Virginia Rigg Alderson, W. Va.

1934

Virginia Hurdle Craddock, Va. Sue Dixon Oakland, Md.
Dorothy Lafette Rosemont, Pa.

1935

Margaret Johnston Wyoming, Ohio Margaret Mary Parmalec Corneys Point, N. J.
Eleanor Rutledge Akron, Ohio Margaret Guy Williamsburg, Va.

Pledges

Louise Kindler	Mt. Vernon, N. Y.	Ann Sneed	Toano, Va.
Olive Lang	Williamsport, Pa.	Sara Lee Peters	Petersburg, Va.
Leona Coyte	Asbury Park, N. J.	Eilleen Fruit	Salisbury, Md.
Amelia Fisher	York, Pa.	Virginia Alling	Buffalo, N. Y.
Barbara Acker	Ossining, N. Y.	Helen Gordon Burd	Deal, N. J.
Mildred Mitchell	Richmond, Va.	Margaret Van Oot	Richmond, Va.
Mary Burwind	Ambler, Pa.	June Ackerman	Ashbury Park, Pa.
Katherine Ferguson	Cranford, N. J.	Carol Heinz	Portland, Maine
Maud Hampton	Parcellville, Va.	Laura Louise Lincoln	Marion, Va.
Mary Frances McClauhan	Richmond, Va.	Phyllis Ferguson	Churchland, Va.
Emily Sneed	Toano, Va.	Lucille Gordon	Forest Hills, N. Y.



GAMMA PHI BETA

Founded at Syracuse University, 1874

ALPHA CHI CHAPTER

Established 1932

Sorores in Urbe

Miss Ann Chapman

Co-organizer

Miss Nancy E. Conklyn, Yonkers, N. Y.

Sorores in Collegio

1933

Lota J. Spence Norfolk, Va.
Catherine M. Westbrook Newport News, Va.
Sally Mason Ridgeway, Va.

1934

Ann Page Moreland Hampton, Va.
Aletta H. Muse Hampton, Va.
Catherine Blanton Newport News, Va.
Frances Culbreth Dillwyn, Va.
Marcia Smith Norfolk, Va.
Ruth Proudman Hampton, Va.

1935

Elizabeth Burch Winchester, Va.
Dorothy C. Nice Downingtown, Penn.
Dorothy Mellon Germantown, Penn.

Pledges

Darl Cunningham Yonkers, N. Y.
Frances B. Moreland Hampton, Va.
Jeanne E. Hull Easton, Md.
Margaret Weber Scarsdale, N. Y.
Marian Trevillian Gloucester, Va.
Clara Sizemore Buffalo Springs, Va.
Helma Mallory Lawrenceville, Va.
Roberta Kuyk Richmond, Va.
Carolyn Davis Hilton Village, Va.





INTERFRATERNITY COUNCIL

Armond Caplan
John Pennello
Leslie Legum

President
Secretary
Vice-President

Sigma Phi Epsilon
Ed Meade
Fred Eilers

Alpha Phi Delta
John Pennello
Joe Cardillo

Sigma Pi
Andy Christensen
Joe Criddle

Sigma Alpha Epsilon
Ralph Murray
Luther Bolton

Lambda Chi Alpha
John Weniger
Chris Sorenson

Pi Kappa Alpha
Francis Hull
Mortimer Jaffe

Phi Alpha
Alvin Kass
Armond Caplan

Kappa Sigma
Herby Leech
Harry Humphreys

Theta Delta Chi
Jack McDonald
Raymond Carroll

Pi Lambda Phi
Les Legum
Melvin Blumenthal

Kappa Alpha
Doug Hubbard
Sterling Chambers

Sigma Nu
Chas. McCurdy
W. H. Savedge

Molly Wilson

Phi Kappa Tau

Jimmy Radcliffe



PAN-HELLENIC COUNCIL

Jean Hyatt
Lorraine Emory
Minnie Cole Savage
Betty Chapin
Virginia Horton
Bunny Refo
Gladys Monroe
Ann Petty
Flora Wilcox

Virginia Goodman
Ann Shawen
Betty Sargeant
Page Johnson
Frances Goodrich
Lucie Grossman
Virginia Hurdle
Ruth Proudman
Sally Mason

PHI BETA KAPPA

ALPHA OF VIRGINIA

Officers

Alexander Wilbourne Weddell	<i>President</i>	T. J. Stubbs	<i>Corresponding Secretary</i>
J. A. C. Chandler	<i>Vice-President</i>	J. R. Geiger	<i>Treasurer</i>
Donald W. Davis	<i>Recording Secretary</i>	R. L. Morton	<i>Historian</i>

Members in Residence

Kathleen M. Alsop	Jos. R. Geiger	Mrs. John Zaharov
Martha E. Barksdale	W. A. R. Goodwin	Vernon L. Nunn
D. J. Blocker	William G. Guy	Gladys Omohundro
H. L. Bridges	Emily Moore Hall	P. P. Peebles
Eleanor Calking	William T. Hodges	R. G. Robb
J. A. C. Chandler	K. J. Hoke	T. J. Stubbs, Jr.
Laura C. Colvin	J. R. L. Johnson	Mrs. T. J. Stubbs, Jr.
Donald W. Davis	R. C. Young	Lyon G. Tyler
J. Wilfred Lambert		Van F. Garrett

Members Initiated December 5, 1932

From The Class of 1933

Alfred Ringgold Armstrong	Jeanne Rose	Joseph Harold Jackier
Rachel Black	Charles Bidgner Shreeves	Davis Young Paschall
John Vaughan Holberton	Georgia Belle Bennett	Richard Franklin Rhodes
Virginia Marie Tucker Jones	Frances Rogers Gale	Anne Elizabeth Shawen
Elizabeth Louise Potterfield		Mildred Wilson Wallace

Alumni Members

James Durette Carneal, Jr., A.B., 1920	Richmond, Virginia
Oscar Hugh Fulcher, B.S., 1922	Sandidges, Virginia
Lemuel Francis Games, B.S., 1913; A.M., 1915	Norfolk, Virginia
Vernon Meredith Geddy, A.B., 1917	Williamsburg, Virginia
Henry Lester Hooker, Ex.-1907	Richmond, Virginia
Stephen Ashby MacDonald, A.B., 1908	Norfolk, Virginia

Affiliated Members

T. S. Cox	Beta of Virginia	R. C. McClelland	Alpha of West Virginia
John R. Fisher	Alpha of Tennessee	Charles F. Marsh	Gamma of Wisconsin
Mrs. J. R. Fisher	Alpha of Tennessee	Mrs. C. F. Marsh	Gamma of Wisconsin
B. F. Flickinger	Gamma of Pennsylvania	R. L. Morton	Beta of Virginia
Althea Hunt	Eta of Pennsylvania	S. D. Southworth	Beta of New Jersey
Jess H. Jackson	Alpha of Alabama	John M. Stetson	Alpha of Connecticut
Grace W. Landrum	Iota of Massachusetts	E. G. Swem	Gamma of Pennsylvania
A. P. Wagner	Alpha of Maryland		

PHI KAPPA PHI

Installed 1925

Officers

Lillian Cummings
George Gregory
W. G. Guy . . .
Eleanor Calkins
Laura Colvin . .

President
Vice-President
Secretary
Treasurer
Corresponding Secretary

Fratres in Facultate

Kathleen Alsop
Martha Barksdale
George E. Brooks
J. A. C. Chandler
T. S. Cox
J. R. Fisher

W. A. R. Goodwin
Althea Hunt
Emily Hall
P. P. Peebles
R. G. Robb
Helen F. Weeks

R. C. Young

Fratres in Urbe

Mrs. Rutherford Goodwin
Mrs. T. J. Stubbs

Vernon Geddy
Vernon Nunn

Fratres in Collegio

Georgia Belle Bennett
Rachel Black
B. R. Bruner
Catherine Cubberly
Ira H. Erickson
J. H. Jackier

Elizabeth Ridout
Anne Shawen
C. S. Sherwood, III
Charles B. Shreeves
Mildred Wallace
Sunner Waters

George H. Zehner



OMICRON DELTA KAPPA

Founded at Washington and Lee University, 1914

ETA CIRCLE

Established 1921

Fratres in Facultate

J. D. Blocker
H. L. Bridges
J. D. Carter
J. A. C. Chandler
J. C. Chandler
M. C. Davis
C. F. Marsh

G. D. Fetzer
J. R. Geiger
W. F. Gibbs
E. C. Popp
W. S. Gooch
G. E. Gregory

W. G. Guy
K. J. Hoke
L. T. Jones
J. S. Kellison
Y. O. Kent
R. C. Morton

P. P. Peebles
T. J. Stubbs
W. L. Scott
W. G. Swem
A. G. Taylor
D. W. Woodbridge
R. C. Young

Officers

Ralph Murray
Sunner Waters
Barrett Roberts
Andrew Christensen

President
Vice-President
Secretary
Treasurer

Fratres in Collegio

Wilford M. Woodward
Fred Eilers
Raymond Carroll
Joseph Jackier
Mortimer Jaffee
Donald Gordon

Barrett Roberts
Littleton Upsor
Charles McCurdy
Armstrong Smith
Armond Caplan
Jerry Quirk

Ralph Murray
Francis Hull
Sunner Waters
Arthur Vaughn
Eugene Pleninger
Luther Bolton

Andrew Christensen
Milton Gallinant
Walter Flinckinger
Howard Scammon
Walter Pierce

Omicron Delta Kappa was founded with the purpose of bringing together in one body, for the general good of the institution, all leaders in various forms of college activities. Membership is restricted to men. It recognizes eminence in scholarship, athletics, campus life, literary and forsynic attainments, and college publications. It is recognized as one of the highest honors that can be given an undergraduate student.





THE F. H. C. SOCIETY

(The Flat Hat Club Society)

Founded at the College of William and Mary in Virginia November 11, 1750

Officers

Raymond Carrol	President
Summer Waters	Vice-President
Wilford Woodward	Secretary
Mortimer Jaffee	Treasurer

Members

Wilford Woodward	Littleton Upshur	Dr. J. A. C. Chandler
Thomas Ayers	Cary Pennington	Dr. R. C. Young
Mortimer Jaffee	Douglas Hubard	Dr. P. P. Peebles
Barrett Roberts	Arthur Vaughn	Mr. J. C. Chandler
Summer Waters	John Weniger	Mr. Yelverton Kent
Raymond Carroll	Robert Henderson	Dr. W. T. Hodges

The Flat Hat Club Society is the oldest living college organization in America, having been founded at the college of William and Mary on November 11, 1750, thus antedating the Phi Beta Kappa fraternity by twenty-six years. On its rolls may be found the names of Jefferson and others of the college's famous alumni, including the long list of notables in the Spotswood Club of Old Virginia.





MORTAR BOARD

Officers

Page Johnson
Lucie Grossman
Minnie Mae Shreves
Georgia Belle Bennett

President
Vice-President
Secretary
Treasurer

Members

Anne Croxton
Georgia Belle Bennett
Catherine Cobberly
Lucie Grossman
Page Johnson
Virginia Romm

Anne Shawen
Minnie Mae Shreves
Miss Althea Hunt
Miss Martha Barksdale
Dr. Grace Warren Landrum
Dr. Helen Foss Weeks

Mortar Board is a national women's honor society, whose members are elected in their junior year on the three-fold basis of scholarship, leadership and personality. The local chapter, Alpha Club, was founded in 1918, when women students were first admitted to the college, and is the oldest co-ed organization at William and Mary. It was installed as a part of the national organization of Mortar Board in December, 1929. Mortar Board is the only women's senior honorary society in the United States.





ALPHA KAPPA PSI

Honorary Business Fraternity

OMEGA CHAPTER

Officers

Sumner Waters
Fred Eilers
B. Travers Hulse
G. Ruffin Winfree

President
Vice-President
Secretary
Treasurer

Fratres in Facultate

Dr. A. G. Taylor

Prof. W. F. Gibbs

Dr. P. P. Peebles

Fratres in Collegio

Sumner Waters
Fred Eilers
B. Travers Hulse
G. Ruffin Winfree
William F. Mueller
James A. Schiavone
Edgar Everhart

Roland B. Hall
James S. Mack
William F. Musbach
James Ramsey
William Schmiedel
Richard Velz
Robert Downs





H₂E CLUB

Honorary Physical Education Club

Officers

Mary Fries
June Beckett
Maude Weaver

Presides
Secretaries
Treasurer

Members

Ann Booth
Helen Stutz
Frances Booth
Margaret Irving
Elizabeth Sparks
Mary Whitley
Jane Oewel
Peggy Yeaman
Maude Weaver

Elsie Hudak
Jane Whittaker
Jean Major
Dot Ford
Annie Felts
Dot Mitchell
Kitty Cubberly
Dorothy Trent
Lucille Reilly



CHI BETA PHI

National Scientific Fraternity

Officers

William T. Marsh
 Edward Cuppola
 Joseph DeGange
 Edward W. Vaughn
 C. S. Sherwood

President
Vice-President
Recording Secretary
Corresponding Secretary
Treasurer

Fratres in Facultate

Dr. D. W. Davis
 Dr. A. W. Dearing
 Dr. W. G. Guy
 Dr. R. G. Robb

Dr. W. W. Merrimon
 Dr. R. C. Young

Mr. J. W. Lambert
 Dr. J. M. Stetson
 Dr. R. J. Taylor
 Mr. C. D. Gregory

Fratres in Collegio

W. T. Marsh
 J. V. Holberton
 C. S. Sherwood
 John A. Luttrell
 Edward J. Cuppola

T. F. King
 Chas. P. McCurdy
 A. J. Christensen
 A. Rich
 E. W. Vaughn

A. R. Armstrong
 Joseph DeGange
 John Turley
 R. G. Todd
 Robert Myers

Frank Barber
 William Palese
 Henry Land
 Daniel Milson
 Jack Watson



THETA CHI DELTA

Honorary Chemistry Fraternity

ALPHA THETA CHAPTER

C. S. Sherwood
 Wm. T. Marsh
 Douglas Matthew
 Richard F. Rhodes
 Arthur M. March

President
Vice-President
Recording Secretary
Corresponding Secretary
 *Treasurer*

Faculty Members

Dr. W. G. Guy

Dr. R. G. Robb

Dr. A. W. Dearing

Members

A. R. Armstrong
 G. W. Daugherty
 J. V. Holberton
 J. R. Radcliffe
 Wm. H. Woodson
 James Mallonee

Robert Dietrich
 J. P. Eastham
 T. T. King
 S. A. Hough
 Wm. Doane

Chas. Flynn
 Henry Land
 Bruce Jacobi
 James Peery
 George Pitts
 Stanley Hemingway



SIGMA PI SIGMA

Honorary Physics Fraternity

Officers

John Holberton
Ira H. Erickson
Elizabeth Wiley

President
Vice-President
Secretary-Treasurer

Fratres in Facultate

Dr. R. G. Young
Dr. W. W. Merrimon

Dr. W. G. Guy
Dr. J. M. Stetson

Fratres in Collegio

W. L. Davidson
L. E. Spenser
Clayton Torrence

Larry Sanders
Jack Freeman
John Holberton

I. H. Erickson
Elizabeth Wiley
Edna Lemster

Sigma Pi Sigma is an honorary physics fraternity and those taking an advanced course in physics and making a grade above the average are eligible for membership. This organization has the distinction of being the only national physics fraternity in the country.



PHI SIGMA

Honorary Biology Fraternity

ALPHA ZETA CHAPTER

Allan Kennedy
Francis Bark
Elenor Berger
Arthur Rich

President
Vice-President
Secretary
Treasurer

Fratres in Facultate

Miss Grace J. Blank Dr. R. L. Taylor Dr. B. W. Davis
Mr. Ben Painter Miss Ann Croxton

Fratres in Collegio

Katherine Andrews	D. W. Davis	Thaddeus King	Jane Satterfield
Francis Bark	Guy Daugherty	Eleanor Knighton	Catherine Selby
Harold Barnes	Annie Page Edwards	William Marsh	Virginia Showalter
Grace Blank	Marie Fries	Douglas Matthew	Minnie Mae Shreve
John Bracken	Katherine Grayson	Camilla Nelson	R. L. Taylor
Elizabeth Berger	Walter Horn	Elizabeth Purnell	Maude Weaver
Richard Conlan	Allan Kennedy	Arthur Rich	Annis Wilkerson
	Flora Willcox		



BETA ALPHA PSI

Professional Accounting Fraternity

Founded 1919

Officers

Mortimer Jaffee
Frances Hull
Gordon Trow

President
Vice-President
Secretary

Fratres in Facultate

Wayne F. Gibbs

Peter P. Peebles

Fratres in Collegio

Littleton Upsur
Joe Stankus
Arthur Brettnall

Ernest Colburn
Gordon Trow
Mortimer Jaffee

Frances Hull
Owen McBride
Herbert Spenser



PHI DELTA GAMMA

National Forensic Fraternity

Founded 1924

Officers

Eugene Pleninger	<i>President</i>
John Mapp	<i>Vice-President</i>
Chas. P. McCurdy, Jr.	<i>Secretary-Treasurer</i>

Fratres in Facultate

Dr. K. J. Hoke	Dr. R. L. Morton	Prof. Wilfred Lambert
Dr. P. P. Peebles	Prof. H. C. Krebs	Prof. Merrill Brown

Fratres in Collegio

Eugene Pleninger	R. Bruce Johnson	Ernest Goodrich
John Mapp	Henry Land	William Renshaw
Chas. P. McCurdy, Jr.	C. S. Sherwood	Hamilton Simonds
	W. W. Savage	



THETA ALPHA PHI

National Dramatic Fraternity

Officers

Joseph Cohen
Lee Rubin
Carleton Casey

President
Vice-President
Secretary

Members

Miss Althea Hunt
Gladys Monroe
Anne Garrett
Mary Virginia Rigg
Howard Scammon

Edgar Wiegand
Rhoda Pratt
Virginia Marie Jones
Elizabeth Brunstetter
Maurice Berkwitz

Lucie Grossmann



WRANGLERS CLUB

Founded 1929

Officers

Luther Bolton		<i>President</i>
James McPherson		<i>Vice-President</i>
Joseph Jackier		<i>Secretary-Treasurer</i>
Walter Pierce		<i>..... Manager</i>
Ralph Murray		<i>Representative to Debate Council</i>
Mr. Merrill Brown		<i>..... Coach</i>
Professors Woodbridge and Cox		<i>Advisory Coaches</i>

Members

M. A. Armfield	Joseph Jackier	John Mapp	W. J. Rhodes
Luther Bolton	Les Legum	Gordon McFarland	W. W. Savage
Ben Bruner	Rufner Lowman	James McPherson	Joe Schenck
Harry Fite	F. Barrett Horton	H. V. Moore	K. Taylor
Alvin Gentry	Ralph Ladd	Ralph Murray	S. W. Winstead
Ernest Goodrich	Red Crank	Walter Pierce	Joe Cardillo
J. L. Hornsby			William Dodson

The purpose of the Wranglers Club is to develop the natural abilities of the members and to stimulate interest in oratorical endeavor on the campus.



WYTHE LAW CLUB

Benjamin R. Bruner
 Charles S. Marshall
 Benjamin P. Burrow
 Joseph C. Shaffer, Jr.

Chancellor
Vice-Chancellor
Clerk
Bailiff

Faculty Members

Theodore Cox
 P. P. Peebles

D. W. Woodbridge

John L. Lewis
 W. E. Hoffman

Student Members

Benjamin R. Bruner
 Charles S. Marshall
 Benjamin P. Burrow

Milton W. Thorpe
 James J. McPherson

Merrill H. Brown
 Joseph N. Criddle
 Joseph C. Shaffer, Jr.

Honorary Members

Dr. J. A. C. Chandler
 Judge Frank Armistead

Dr. John Garland Pollard

Dr. Joseph R. Geiger
 George E. Gregory



CHI DELTA PHI

Honorary Women's Literary Fraternity

Mrs. G. G. Clark, *Honorary Member*

Officers

Georgia Bell Bennett
 Bettina Sargeant
 Marion Banks
 Ruth Cobbett

President
Vice-President
Secretary
Treasurer

Members

Honore Wickham
 Ann Petty
 Ellen Thomas
 Ann Chalkley

Edith Manning
 Jean Wilson
 Virginia Clark

Laura Coleman
 Virginia Alling
 Eleanore Holferty
 Alice Morris

Chi Delta Phi was founded at the University of Tennessee and its purpose is to form a body of women who, by their interest in literature and by their influence, will uphold the highest ideals of liberal education.



KAPPA PHI KAPPA

Professional Educational Fraternity

Officers

William Marsh
 Andy Christensen
 Charles Gill . . .
 Robert Harris

President
Vice-President
Treasurer
Secretary

Fratres in Facultate

Dr. P. P. Peebles
 Dr. D. J. Blocker

Dr. H. C. Krebs

Mr. L. Tucker Jones
 Mr. Ben Painter

Fratres in Collegio

William Marsh
 Charles Gill

Epper Jones
 Joe Fink
 Robert Harris

Claude Wade
 Andy Christensen



KAPPA DELTA PI

Honorary Educational Fraternity
Founded 1911

ALPHA XI CHAPTER

Officers

Lota Spence
Marie Orles
Margaret Hudson
Frances Gale

President
Vice-President
Secretary
Treasurer

Fratres in Facultate

Dr. Ingaolla Helseth
Dr. J. Paul Leonard

Dr. H. E. Krebs
Dr. Helen F. Weeks

Fratres in Collegio

Elenor Berger
Maud Newbury
Ruth Jette
Evelyn Robertson
Ann Edwards
Sue Brittle
Mary Payton Boyer
Katherine Costello
Louise Rogers

Ruby Whittington
Katherine Martin
Francis Sizer
Margaret Smith
Mary Gallegher
Elizabeth Wiley
Ruth Proudman
Marcia Smith

Nancy Hoyle
Anne Page Moreland
Frances Culbreath
Margaret Thompson
Elizabeth Potterfield
Ethel Hartman
Lucie Grossman
Ruth Hornsby
Margaret Scott

Page Johnson
Lena Martha Bohannon
Louise Gunn
Maude Weaver
Ann Shawen
Frances Beckerlee
Lois Jenkins
Nannie Christian
Ben Painter



ETA SIGMA PHI

Classical Fraternity

OMEGA CHAPTER

Officers

Frances Gale
Ethel Hartman
Louise Gunn
Charles Shrieves

President
Vice-President
Secretary-Treasurer
Marshal

Faculty Members

Mrs. D. J. Blocker
Dr. Paul Clement

Mr. Robert C. McClelland
Dr. A. P. Wagener

Student Members

Alberta Alperin
Harold Balkin
Sue Brittle
Frances Gale
Louise Gunn
Mary Gallegher
Ethel Hartman

Ada Kelley
Anne Page Moreland
Lucille Orlin
Elizabeth Potterfield
Mae Rennolds
Virginia Romm
Anne Shawen

Charles Shrieves
Irving Silverman
Mary Wiley
Margaret Wright
Mary Bowyer
Ted Coleman
Helen Davis

Jane Gilmer
Ernest Goodrich
Christine Hudson
Ann Northington
Margaret Stribling
Dorothy Greene



THE FRENCH CLUB

Officers

Page Johnson	President
Mary Virginia Rigg	Secretary
Nathan Blumenthal	Treasurer

Honorary Members

Dr. Victor Ituraide	Dr. John R. Fisher	Dr. Earl G. Swem
---------------------	--------------------	------------------

Student Members

Frances Bell	Marion Moncure	Lena Bohannon	Marjorie Glasser
Margaret Guy	Pearl Aranoy	Catherine Martin	Charlotte Allen
Dorothy Baden	Virginia Webber	Jeanne Rose	Cecelia Thomas
Margaret Willetts	John Parlapiano	Ann Northington	Virginia Romm
Fauntleroy Smith	Betty Sargeant	Betty Stein	Jean Upsall
Margaret M. Parmelee	Morton H. Bauman	Betty Chambers	Dorothy LaFitte
Nancy Hoyle	Margaret Thorpe	Melvin D. Blumenthal	Eleanor Berger
Mary Virginia Rigg	Audrey Hopson	Irving Silverman	Elizabeth Mitchell
Edwerta Bayer	Elizabeth Potterfield	Ilene Peters	Eleanor Dobkey
Frances Beckerle	Virginia Belliveau	Elizabeth Betts	Lucia Muller
Alice Donnen	Judson Wheeler	Yevive Winslow	Dorothy Leibeskiend
Georgia Zehner	Annie Chandler	Margaret Scott	Benny Friedman
Jessie Lee	Juliette Croxton	Alba Colabella	William Heltzell
	Estelle Foreman		



PHI KAPPA OMICRON

Honorary Home Economics Fraternity

Officers

Mary Owel
 Marion Zuydboeck
 Elizabeth Ridout
 Mary Moore
 Mary Painter
 Ellasue Carr
 Ruby Whittington

President
Vice-President
Recording Secretary
Corresponding Secretary
Treasurer
Program Chairman
Social Chairman

Honorary Members

Lillian A. Cummings Evelyn Neale Jean Stewart Alma Wilkin

Members

Mary Abbott
 Elizabeth Burruss
 Mary Butterfield
 Catherine Costell
 Ellasue Carr
 Drucilla Davis

Ray Hannifin
 Sarah Jobst
 Gladys Monroe
 Mary Moore
 Mary Owel

Nina Pruett
 Sarah Lee Petis
 Emily Parker
 Mary Painter
 Harriet Pittard
 Elizabeth Ridout



CLAYTON-GRIMES BIOLOGICAL CLUB

Founded 1921

Officers

Allan Kennedy
Sarah Pope
Ruth Engle
Elizabeth Purnell

President
Vice-President
Secretary
Treasurer

Faculty Members

Dr. D. W. Davis

Dr. R. L. Taylor Mr. Tucker Jones
Miss Grace J. Blank

Dr. D. J. King

Student Members

Guy Daughtery
Ella Cox
J. R. Bracken
Myrtle Cooper
Virginia Clementson
Francis Bark
Mary Elizabeth Allison
Donald Brockway
Dorcas Admister
Ruth Engle
Morris Elliot
Nancy Hoyle

Mary Heath
Morton Guzy
Walter Horn
Dorothy Beck
Alan Kennedy
Carrie Lee Jordan
Alice Jordan
T. E. Jones
Robert Bruce Johnson
Sue Lancaster
Florence Lewis
Eleanor Knighton

Thaddeus King
Joseph Pollard
Albert Nurnburger
Ruth Personius
Sidney Paine
George Pitts
Elizabeth Lee Purnell
Eleanor Parks
Sarah Pope
Edith Pope
Mary Elizabeth Moore
Mary Oewel

Virginia Showalter
Ellis Schwab
Elizabeth Squires
Margarite Stribling
Helen Rose
Emma Metcalf
William H. Woodson
Virginia Whitlock
Margaret Wilson
Edgar Weigand
Emily Winship
Elizabeth Young



LOS QUIXOTESCOS

Spanish Club

Officers

Ann Chalkley
Lester Litwin
Margaret Neale

President
Vice-President
Secretary

Members

Glady Anderson
Harry Bernstein
Helen Brady
Rachel Black
Elizabeth Carman
Lillian Carmine
Ann Chalkley
Alex Dempster
Robert Downs
Hardy Dudley
Althea Farrell

Francis Gale
Dorothy Gieve
J. W. Gregory
Bob Henderson
Mary Glenn Hick
Eleanor Holterty
Virginia Haughton
Margaret Hudson
Marie Keiley
Dorothy Kinsley
Hazel Kleig

Ethel Goldstein
Lloyd Langbaur
Lester Litwin
Norman MacLeod
Dorothy Mathews
Margaret Neale
Edward Plummer
Mary Porter
Harrell Pierce
John Pennello
Roslyn Richardson

Magnus Robertson
Patricia Roseberry
Margaret Ruthertord
Henry Seymour
Marguerite Stribling
Ellen Thomas
Marion Waters
J. P. Warner
Chas. Weinbrum
Virginia Whitlock
Anne Weaver



ART CLUB

Officers

Nan Squires
Lee Coyte

President
Secretary-Treasurer

Members

Nan Squires
Lee Coyte
Helen Denny
Virginia Jones
Becky Lee
Mildred Wallace
Betty Chapin
Florine Smith
Eleanor Rutledge
Billy Etheridge

Sarah Lee Peters
Carl Magdalin
Sarah Bull
Helen Conner
Edith Boyd
Emily Winship
Helen Bard
Jane Kenon
Jane Douglas
Talbot Smith
Ray Hannifin

Mary Horton
Jean Wilson
Ralph Ladd
Virginia Rawlings
Hallie Jane Dill
Alice Edwards
Jane Clark
Sophie Croxton
Marguerite Stribling
Katherine Wood



EUCLID CLUB

Founded 1931

Officers

Calder S. Sherwood
 Louise Lang
 Elizabeth Toler
 Ethel Hartman

President
Vice-President
Secretary
Treasurer

Faculty Members

Mr. C. D. Gregory Miss Beulah Russell Miss Emily Calkins
 Dr. M. Stetson Miss Childress

Student Members

Frances Beckerle	Jack Freeman	Louise Lang	Carol Stetson
Bailey T. Bell	Charles Flynn	Sarah Lacy	Lotta Scott
Eleanor Berger	Helen Goslee	Edna Lemester	Elizabeth Squire-
Edna Bradshaw	Louise Gunn	Douglas Mathews	Marcia Smith
Susie Brittle	Ethel Hartman	Shirley Mason	C. S. Sherwood
Alice Brown	Lois Jenkins	Camilla Nelson	Fay Silverstein
Nannie Christian	Elinor Knighton	Marianna Norris	W. H. Savage
Nancy DeLashmutt	Evangeline Klug	Elizabeth Potterfield	Elizabeth Toler
Annie Page Edwards	Bruce Kent	Sarah Pope	Elizabeth Vaiden
Frances Ferguson	Roberta Kayk	Louise Rogers	Elizabeth Wiley

The Euclid Club was organized on the campus of William and Mary College November 20, 1931, to promote the interests of students majoring or minoring in mathematics.



INTERNATIONAL RELATIONS CLUB

Founded 1931

Officers

Benjamin R. Bruner
 Marianne Norris
 Joseph C. Shaffer, Jr.
 Donald Gordon

President
Vice-President
Secretary
Program Chairman

Faculty Members

T. S. Cox
 L. V. Howard

C. F. Marsh

P. P. Peebles
 D. W. Woodbridge

Members

Ben Bruner
 Luther Bolton
 Merrill Brown
 Ben Burrow
 Joseph Cardillo
 Giorgi Curti
 Donald Gordon
 Chas. Hagberg

Barrett Horton
 J. H. Jackier
 Dorothy Lafitte
 Charles Marshall
 Helen Moffett
 Sumner Miller
 Mary Minnican

J. J. McPherson
 Wiley J. Nash
 Marianne Nash
 E. S. Orr
 Betty Sargent
 Joseph C. Shaffer
 Esther Silverstein

Jane Satterfield
 W. W. Savage
 Lida Solatoroff
 Hannah Severin
 J. W. Taylor
 Milton Thorp
 Richard Vels
 M. D. Woodward



HISTORY CLUB

Officers

Mildred Cross
 Frances Sizer
 Lois Jenkins

President
Vice-President
Secretary-Treasurer

Members

Katherine Carter
 Mildred Cross
 Lucie Grossman
 Lettie Hairston
 Winifred Hall
 Ruth Hornsby
 Lucille Hurst
 Lois Jenkins
 Carrie Lee Jordan
 Dorothy Laÿtte
 Corleen Loeffler

W. W. Renshaw
 Pully Mass
 Frances Sizer
 Elizabeth Squires
 Frances Upton
 George Bishop
 Melvin Blumenthal
 Melvin Caplan
 Carl Custie
 Morris Elliot
 Sydney Gould



“7” SOCIETY

Raymond J. Carroll

Fred Eilers

Ralph W. Murray

Charles P. McCurdy

Mortimer Jaffee

Julian A. C. Chandler, Jr.

James Schiavone



Saturday Afternoon at the St. George Tucker House



WASHINGTON HALL AS SEEN FROM THE WREN BUILDING

ACTIVITIES



MEN'S STUDENT BODY

OFFICERS

Andrew Christensen
Wilfred Woodward
Brooks Flickenger

President
Vice-President
Secretary-Treasurer

At the College of William and Mary the students are governed by a Student Government, which is composed of two organizations, the Men's Student Body, and the Women's Student Government Association.

The officers of the Men's Student Body are elected each May from members of the next year's Senior class, in a general election. These men then serve a term of one year, conducting affairs which pertain to the Men's Student Body.



MEN'S HONOR COUNCIL

OFFICERS

Ralph Murray

President

Howard Scammon

Vice-President

Doug Hubbard

Secretary

Red Lawson

Treasurer

MEMBERS

Senior Representatives

Ralph Murray

Howard Scammon

Junior Representatives

Doug Hubbard

Red Lawson

Sophomore Representatives

Charles Shade

Chris Sorenson

Freshman Representative

Bill Wilhelm



EXECUTIVE COUNCIL

Catherine Cubberly

President

Harriet Pittard

Vice-President

Ann Pharr

Secretary

Deane Lindsay

Treasurer

Representatives at Large

Winifred Corey

Ann Petty



JUDICIAL COUNCIL

OFFICERS

Minnie Mae Shreve

President

Virginia Hurdle

Secretary

MEMBERS

Harriet Council

Betty Chambers

Camilla Nelson

Margaret Clark

Margaret Hudson

Honore Wickham



WOMEN'S HONOR COUNCIL

OFFICERS

Virginia Romm

President

Vinna Ferril

Secretary

MEMBERS

Mary Butterfield

Ruth Kolb

Lucie Grossman

Nancy DeLashmutt

Dorothy Lafitte



BOARD OF CONTROL IN STUDENT
ACTIVITIES

Luther Bolton

Chairman

Walter Pierce

Treasurer

Gladys Monroe

Secretary

Fred Eilers

Barrett Roberts

Louis Carner

Anne Shawn



THE COLONIAL ECHO

Fred Eilers
Ralph Murray

Editor
Business Manager

Editorial Staff

Associate Editors

Barrett Roberts

Wally Lynn
Joseph Lee Mann

Ruth Wills

Activities Editors

Wilfred Woodward
Joseph Schenk
Chris Timberlake

Dot Mack
Irving Silverman
Wesley Warnock

Dot Littlepage
Lucie Grossman
Kitty Chiswell

Charles Brown
Francis Bell
Fred Roy

Feature Editor

Becky Lee

Sports Editors

Joe Cardillo

Edwin Meade

Dorothy Lafitte

Ray Carroll

Fraternity Editors

Evelyn Coker

George R. Hewes

Eldon James

Stenographers

Mary Raleigh
Jane Clark

Hansy Wallace
Margaret Brown

Kay Everhart
Betty Brunstetter

Margaret Clarke
Virginia Clark

Business Staff

Chas. P. McCurdy	<i>Assistant Business Manager</i>	John A. Mapp	<i>Assistant Advertising Manager</i>
James Warner	<i>Advertising Manager</i>	Luther Bolton	<i>Circulation Manager</i>
Frank Manning	<i>Assistant Advertising Manager</i>	Harrol Pierce	<i>Circulation Manager</i>
	Mortimer Jaffee	<i>Circulation Manager</i>	





THE FLAT HAT

Editorial Staff

Barrett Roberts
Lucie Grossman
Donald Gordon
Fred Eilers

Editor in Chief
Associate Editor
Managing Editor
Art Editor

Betty Sargent
Joe Cardillo
Louise Lang
Marion Banks

Features Writer
Sports Editor
Women's Sports Editor
Women's Managing Editor

News Staff

O. C. Southern
James Maloney
John Mapp
Ray Talmage
James McPherson
Sidney Payne
John Shepard
Richard Velz

Jack Henderson
Tyler Mathew
Wes Warnock
Ed Hessian
Jimmie Jobbins
Murray Trinkle
Harold Wolff

Joe Stankus
Dorothy Dunlap
Lester Walker
Sarah Dobbs
Ann Chalkley
Ruth Cobbett
Edith Manning

Dot Lafitte
Jane Steele
Ann Thomas
Ann Bradford
Francis Smith
Leona Yoder
Lester Litwin
George Hewes

Business Staff

Charles P. McCurdy

Business Manager

Assistant Business Managers

Walter Pierce, Sterling Chambers, Jack McDonald

Joseph DeGange

Advertising Manager

Assistant Advertising Managers

F. Boardman Fish, Robert M. Mullowney, W. T. Marsh

Henry Land

Circulation Manager





THE WILLIAM AND MARY LITERARY MAGAZINE

Littleton Upshur

Editor

ASSOCIATE EDITORS

Donald Gordon

Marion Banks

Chris Sorenson

Ann Chalkley

Georgia Belle Bennett

Fred Eilers

Art Editor

BUSINESS STAFF

Raymond Carroll

Business Manager

John Weniger

Assistant Business Manager

Louis Carner

Ann Hyatt

Benjamin Friedman

Rowland Hall





SENIOR-SOPHOMORE TRIBUNAL

MEMBERS

Carter White
Sumner Waters
Joseph DeGange
Herbert Leach
Winton Gregory
Chet Tavenner

Gene Barkley
Dave Young
Dingy Kahn
Junie Smith
Carl Giles
Bill Savage



J. LESLIE HALL LITERARY SOCIETY

Jean Hyatt
Margaret Hudson
Marie Kiehl
Carol Stetson
Carleen Loeffler

President
Vice-President
Secretary
Sergeant-at-Arm
Treasurer

MEMBERS

Dorothy Anderson
Lillian Alderson
Gladys Anderson
Nancy Armistead
Helen Addis
Mabel Aggar
Eleanor Berger
Ruth Buisl
Lucy Britt
Jean Berry
Mary Anne Barnes
Elizabeth Betts
Sue Brittle
Frances Beckerle
Elizabeth Brown
Margaret Browa
Ruth Colbett
Winifred Corey
Alice Cahill
Helen Conner
Laura Coleman
Alice Cox
Katherine Carter
Helen Combs
Margaret Croft
Frances Colbroth
Matilda Chapman

Darl Cunningham
Frances Cosby
Dorothy Dunlap
Rebecca Dickinson
Drusilla Davis
Sarah Dolbs
Elsie Demeroy
Olive Darling
Helen Davis
Anna Page Edwards
Dorothy Ela
Dorothy Fuller
Helen Faden
Katherine Ferguson
Phyllis Ferguson
Margaret Freeman
Bertrude Frost
Louise Gunn
Jane Gillman
Golda Gwynn
Elizabeth Grayson
Elizabeth Gresham
Anne Harret
Mary Horton
Virginia Horton
Mary Hudson
Jean Hyatt

Margaret Hildalbrandt
Virginia Harris
Ethel Hartman
Nancy Holland
Christine Hudson
Anne Keysar
Roberta Kuyak
Marie Kiehl
Carleen Loeffler
Charleton Leitch
Anne McCreedy
Mary Minichan
Katherine Martin
Eleanor Martin
Isabella McCarthy
Vi Martin
Anne Mengel
Camilla Nelson
Priscilla Niekorsson
Anne Northington
Nancy Peoples
Jeanie Parker
Ruth Robertson
Louise Rawles
Jeanie Rose
Virginia Rawlinus
Ruth Robinson

Violet Ramsey
Nannie Mae Squires
Jane Stanger
Mary Smith
Margaret Shreve
Helen Singer
Lota Scott
Jane Steele
Pauline Stanley
Francis Smith
Florine Smith
Martha Seaver
Marion Stuart
Carol Stetson
Dorothy Toulou
Janet Thorp
Elizabeth Toler
Margaret Thompson
Boris Van Dren
Jane Welch
Emily Winship
Eleanor Walker
Yedice Winslow
Virginia Whitlock
Elizabeth Wiley
Bunny Young



PHILOMATHEAN LITERARY SOCIETY

OFFICERS

Guy Daugherty
Sterling Hill
Robert Vaden
Hubert Kinnamon

President
Vice-President
Secretary
Treasurer

MEMBERS

John Bacon
F. Barnes
Bailey Bell
J. P. Bracken
Ben Bruner
J. W. Bunting
R. P. Causey
Joseph Cridlin
W. L. Davidson
C. P. Davis
Guy Daugherty
G. Diamant
J. Diamant
W. Duncan
C. W. Gill

O. Givvins
J. W. Gregory
W. Gross
M. Guzy
A. S. Harley
C. E. Hatch
J. T. Henderson
A. S. Hill
J. V. Holberton
I. A. Jaslow
R. B. Johnson
D. G. Johnson
B. M. Kent
B. Kinnimon
W. Kinnamon

C. Kruse
H. W. Linton
H. M. Little
H. R. Lowman
J. E. Mallonee
C. Marshall
John Mapp
J. H. MacGuire
J. W. Nash
S. Paisoner
Sidney Paine
L. Plummer
Larry Quirk
E. A. Rohn
R. Reynolds

W. J. Rhodes
E. Robertson
D. Rutledge
W. Savedge
W. Stallings
R. Stanton
S. Snowden
W. E. Taylor
R. C. Vaden
H. C. Wade
J. Whittington
W. White
W. H. Woodson
M. D. Woodward



PHOENIX LITERARY SOCIETY

OFFICERS

1932-33
 W. W. Renshaw
 W. E. Horn
 E. A. Gentry
 J. O. Manly
 T. Epps Jones
 Luther Bolton
 J. P. Pollard
 Sam Griffin
 Ernest Goodrich

President
Vice-President
Recording Secretary
Program Secretary
Treasurer
Critic
Sergeant-at-Arms
Chaplain
Debate Council

1933-34
 Walter Horn
 W. G. Trow
 W. J. Dodson
 Ralph Ladd
 T. Epps Jones
 Luther Bolton
 G. W. Flinn
 Max Dowman
 Ernest Goodrich

MEMBERS

W. W. Renshaw
 W. E. Horn
 Ernest Goodrich
 T. Epps Jones
 R. E. Ladd
 M. W. Dorman
 M. S. Foster
 G. B. Williams
 S. L. Griffin
 D. D. Matthews
 C. S. Sherwood
 Ben Wright
 T. B. Cranston
 T. K. Tuck

W. G. Trow
 J. P. Pollard
 W. J. Dodson
 E. A. Gentry
 J. O. Manly
 Haden Davis
 L. M. Bolton
 Ralph Murray
 Pete Wechsler
 Ed Ball
 G. W. Flinn
 H. M. Sizemore
 R. G. Griffin

Red Marsh
 George Pitts
 R. E. Trow
 R. Beisler
 Earl Billman
 P. T. Smith
 Dick Turner
 Ellis M. Schwab
 J. C. Gouldman
 Leroy Davis
 P. W. Schmidt
 George Phillips
 J. A. Harrison

B. E. Rhodes
 Edward Newby
 Blake Newton
 Charles Bangh
 Edward Temple
 R. E. Taylor
 Noel Walker
 G. E. Krank
 Knut Trenary
 Milton Neale
 Francis Polin
 J. H. Moorman
 J. W. McKenna
 Merrill Brown



MEN'S DEBATE COUNCIL

Luther M. Bolton

President

Charles Gill

Vice-President

Earnest Goodrich

Secretary

Walter E. Pierce

Manager

Ralph W. Murray



WOMEN'S DEBATE COUNCIL

OFFICERS

Anne Shawen
 Lota Spence
 Margaret Rutherford
 Louise Lang
 Merrill Brown

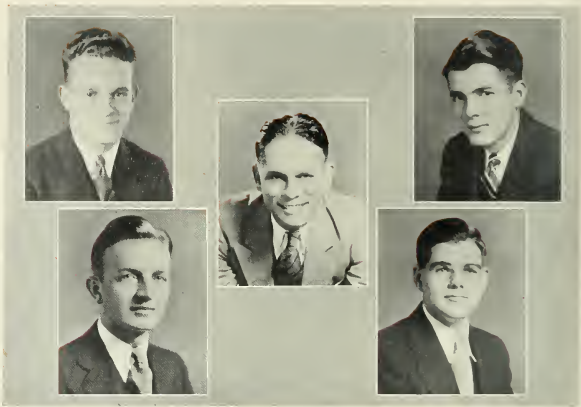
President
Vice-President
Secretary
Treasurer
Coach

MEMBERS

Sue Brittle
 Harriet Council
 Olive Darling
 Dorothy Dunlap
 Amelia Fisher
 Lucie Grossman

Mary Hollowell
 Virginia Houghout
 Margaret Hudson
 Louise Lang
 Mary Frances McClanahan
 Frances Moreland

Ann Northington
 Lorraine Noyes
 Margaret Rutherford
 Anne Shawen
 Lota Spence
 Margaret Van Oot



MEN'S DEBATE TEAM

Men's debate is sponsored by a Debate Council, which is responsible for the entire scope of men's debate, including the choosing of a coach.

The men's debate squad, from which all Varsity debaters are selected, is known as the Wrangler's Club. Opportunities are given twice a year for admission into this Club. Admission is based solely upon debating ability as demonstrated before the Club's Board of Membership.

The coaching staff consists of one active coach and several advisory coaches. The function of the active coach is to train the speakers, while that of the advisory coaches is to help select the personnel of the teams and to criticize the speeches.

MEMBERS

Ralph W. Murray
Barrett Horton

Luther M. Bolton
J. J. McPherson

Walter E. Pierce



WOMEN'S DEBATE TEAM

Anne Shaven

Lota Spence

Margaret Rutherford

Louise Lang

Merrill Brown

President

Vice-President

Secretary

Treasurer

Coach

DEBATE SCHEDULE FOR 1932-33

Penn State College

Geneva College

New York University

Goucher College

Swarthmore College

Bucknell University

Drexel Institute

Boston University

University of Maryland

Middlebury College

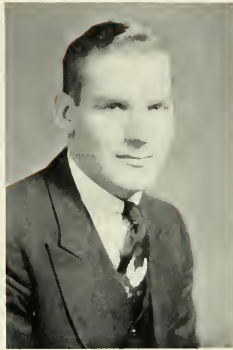
FRESHMAN

Freshmen Men

Hollins College

Randolph-Macon College for Women

The women's debate squad for which all varsity debaters are selected is known as the Women's Debate Council. Opportunities are given twice a year for admission. Admission is based solely upon debating ability as demonstrated before members of the council. The personnel of the Varsity teams is chosen by the coach and officers of the council.



Y. M. C. A.

OFFICERS

Morris Elliott
Cecil Harper
Ruffner Lowman
Leighton Huske

President
Vice-President
Secretary
Treasurer

The Y. M. C. A. at the college has for a long time done an important work in standing for a high spiritual life among its members and working throughout the college for the advancement of Christianity. The meetings of the association are often addressed by the ministers of the town, by members of the faculty, and by visiting speakers.



Y. W. C. A.

OFFICERS

Annis Wilkerson
Ruth Kolb
Juliet Croxton
Louise Lang
Camilla Nelson
Yevie Winslow
Clarinda Franz
Eleanor Buchanon
Ray Hannifin
Carleen Loeffler

President
Secretary
Treasurer
Program Chairman
Social Chairman
Devotional Chairman
Publicity Chairman
Music Committee
Social Service Committee
Dramatic Committee

The Y. W. C. A. at William and Mary was formed in the spring of 1920 and has been growing ever since. It has now become a strong influence on the campus. Under its auspices are held regular meetings, both secular and devotional, through which interest is aroused in affairs of importance in the world, charities, and in missions. The association plans formal entertainments for the pleasure of the students and organizes trips to neighboring places of interest.



GIBBONS CLUB

OFFICERS

Raymond Carroll	<i>President</i>
Alice Cobill	<i>Secretary</i>

MEMBERS

Andrew Amatruda	Margaret Davis	W. R. Hawkins	William C. Pomeroy
Olive Anderson	Joseph DiGange	Margaret Hatke	Gerald Quirk
J. J. Ashton	Daniel Devereaux	Grace Herd	Laurence Quirk
Frank Barber	James J. Digauzi	Anna Hudnall	Mary D. Raleigh
June Becket	Virginia Dorgeral	Francis W. Hull	John B. Redding
Pauline Bourdon	T. A. Dowd	Virginia Jones	Lucile Reilly
James A. Bragen	J. D. Drew	Mary Frances Kennedy	Frank Rhon
William Breen	Ralph Elmore	Dorothy Kerr	Nuncio Sampieri
Paul Broderick	Gills Emory	Dorothy Kinsley	Ferdinand Schmidt
H. Aulick Burke	Constance Etheridge	Pamela-Rae Kraft	August Scialfa
J. J. Burnes	Helen Fadden	Aime B. LeCroix	Richard Stanton
John E. Cardillo	R. L. Farabaugh	Pauline Lucas	Helen Stuz
Joseph Cardillo	Althea Farrell	Frank Manning	Joseph Stupatsky
Fred C. Casagrande	Edwin Flemming	Isabelle McCarthy	John Sullivan
William Casey	Frank A. Font	J. H. McGuire	Anthony Trioano
Everett Cataldo	Dorothy Ford	John W. McKenna	Sal Trombetta
William J. Chalko	Benjamin Foster	Edwin Meade	Felix Troyano
John Chaoquette	Uri S. French	B. G. Myer	Frederick Troyano
Michael Cifelli	Peter Frangillo	Robert Mulloney	Michael Turchik
Ernest Clericuzio	Mary Ann Gallegher	Helen Murray	Irving Upson
Alice Cobill	John Gordy	Robert Nugent	Thomas Walsh
Nancy Conkyn	Virginia Gruss	Raymond O'Connell	Raphael Watts
Richard Conlen	Howard Hanna	Gerald O'Niell	Ann Weaver
Bernard T. Crest	J. C. Hauna	William Palese	Eloise Whitehead
F. George Curti	Micael Hanna	John A. Pennello	Honore Wickham
Mildred Daly			Mathew Yakavonis



THE CHAPEL

MUSIC

THE CHOIR

Marie Bryhn	Cathrine Blanton
Margaret Giffen	Betty Reeves
Betty Johnson	Ruth Sharrett
Betty Jackson	Ruth Proudman
Margaret Harter	Harold Broughton
Ethel Hartman	Sydney Paine
Sherly Easley	Earl Morden
Lorraine Noyes	Jack McDonald
Dorothy Nice	Sherwood Hornsby
Anne Page Moreland	Howard Scammon



MEN'S GLEE CLUB

G. Ruffin Winfree
 Donald Brockway
 Bernard Brugh
 Frederick Smith
 Mr. Robert Griffiee
 Henry Wolfe

President
Vice-President
Secretary-Treasurer
Librarian
Director
Accompanist

MEMBERS

Daniel Devereaux
 Jerome Petrie
 M. B. Orenstein
 J. S. Smith
 Roger Child
 George Weinbauer
 Angelo Papandrew

L. E. Walker
 G. D. Baerman
 Ralph Levine
 Kay Hurst
 Sidney Paine
 J. P. Hubberd

A. B. Brailee
 Ruffin Winfree
 Donald Brockway
 Bernard Brugh
 Fred Smith
 Robert Griffiee
 Henry Wolfe



WOMEN'S GLEE CLUB

Mary Virginia Rigg
 Virginia Mister
 Mary A. Whitley

President
Vice-President
Secretary

Mary Virginia Riggs
 Ann Chalkley
 Lucille Gordon
 Frances Sizer

Sopranos
 Charlotte Foster
 Frances Holloway
 Harriet Whitley
 Jessie Lee
 Margaret Thorpe

Elizabeth Crouse
 Alice Crutchfield
 Dorothy Mellor
 Marian Trevillion

Virginia Mister
 Mary E. Allison
 Helen Combs

Altos
 Virginia Evans
 Esther Beebe
 Elizabeth Mitchell

Margaret Hedgecock
 Mary Allen
 Betty Gordon

Edith Boyd
 Elizabeth Young

Soprano Reserves
 Louise Kindler
 Margaret Guy

Jane Clark
 Hulda Dimmit



THE BAND

OFFICERS

Francis Hull
 John McDonald
 Melvin Blumenthal
 Barrett Horton
 Prof. George Small

President
Vice-President
Secretary-Treasurer
Drum-Major
Director

MEMBERS

Barrett Horton	John Shepherd	Francis Hull	Robert Gillis
J. McDonald	Angelo Papandrew	Bill Musbach	John Hanna
Pete Christian	William Roundtree	Bob Griffiee	Tommy Butts
George Reizen	Frank Heinaman	Harold Bray	Bruce Haughtout
Max Doman	Jimmy Bragen	Garrett McEwin	Robert Glenn
Melvin Blumenthal	Jack Smith	Joe DiGangi	Wilbur Gross
Earl Morden	Roland Hall	Luke Phillips	W. Salter
William Savage	Buckwheat Steuart	Parker Buck	B. Broughton



THE COLONIAL COLLEGIANS

Saxophones

Frank Hull
Fred Stewart
Garrett McEwin

Trumpet

Frank Heineman

Drums

Luke Phillips

Bass

John MacDonald

Banjo

Sol Kahn

Piano

Howard Scammon



WILLIAM AND MARY DRAMATIC CLUB

OFFICERS

Howard Scammon
 Gladys Monroe
 Mary Virginia Rigg
 Donald Gordon

President
Vice-President
Secretary
Treasurer

MEMBERS

Edgar Weigand
 Charles McCurdy
 Joseph Cohron
 Anne Garrett
 Elizabeth Brunstetter
 Virginia Marie Tucker Jones

Carleton Casey
 Lucie Grossmann
 Elizabeth Chambers
 Douglas Hubard
 Rhoda Pratt
 Barbara Acker
 Eugene L. Pleninger

Shirley Metz
 Bruce Johnson
 Anne Chalkley
 Jack Watson
 Ralph Ladd
 William Winfree

Prof. G. G. Clark
 Miss Althea Hunt

Honorary
Faculty Advisor

THE WILLIAM AND MARY PLAYERS

DRAMATIC CALENDAR
FOR THE SESSION, 1932-33

Miss Althea Hunt, *Director*

July 8, 1932—Program of Three One-Act Plays, presented by the Summer School Play Production Class: PLEASE DO NOT PICK THE FLOWERS, by Babette Hughes; HANDSOME IS, by Ida Benjamin Burroughs; TEN MINUTES BY THE CLOCK, by Alice C. D. Riley.

July 21, 1932—THE DOVER ROAD, by A. A. Milne, Presented by the Summer School Players.

October 26, 1932—OUTWARD BOUND, by Sutton Vane, presented by the Virginia Alpha Chapter of Theta Alpha Phi, Phi Beta Kappa Hall.

November 11, 1932—Program of Three One-Act Plays, presented by the Play Production Class, Phi Beta Kappa Hall: WIENIES ON WEDNESDAY, by Edna Higgin Strachan; FAREWELL, CRUEL WORLD, by William Alden Kimball; THE POT BOILER, by Alice Gerstenberg.

December 9, 1932—HOLIDAY, by Philip Barry, presented by the Class of 1933, Phi Beta Kappa Hall.

January 12, 1933—Scenes from THE RECRUITING OFFICER, by George Farquhar, for the formal opening of the Williamsburg Theatre.

January 20, 1933—THE PLAYGOERS, by Arthur W. Pinero, presented by the Play Production Class to an invited audience.

March 10, 1933—MUCH ADO ABOUT NOTHING, by William Shakespeare, sponsored by the Dramatic Club, Phi Beta Kappa Hall.

March 31, 1933—Program of Three One-Act Plays, directed by Students of the Play Production Class, Phi Beta Kappa Hall: ROMANCE OF THE WILLOW PATTERN, by Ethel Van der Veer; THE GIANT'S STAIR, by Wilbur Daniel Steel; THE FLATTERING WORD, by George Kelly.

April 7 and 8, 1933—Fourth Annual Dramatic Tournament of Tidewater High Schools at the Mathew Whaley High School, sponsored by the William and Mary Players.

April 21, 1933—Program of Four Original One-Act Plays by Members of the Playwriting Class, directed by students of the Play Production Class, Phi Beta Kappa Hall: NANCY IS A HELP, by Margaret M. Clark; BLIND MAN'S BUFF, by Hamilton Simonds; THE FORWARD PASS, by Honore Wickham; HOOP OF GOLD, by Marion L. Banks.

THE WILLIAM AND MARY PLAYERS

DURING the season of 1932-33, the William and Mary Players have added four full length plays and fourteen one acts to their long list of productions, have carried the annual dramatic tournament of Tidewater high schools into its fourth year of existence with seven schools competing, and presented a special arrangement of George Farquhar's *THE RECRUITING OFFICER* for the formal opening of the Williamsburg Theatre. Despite the financial depression, the Players are proud to close the year financially, as well as artistically and dramatically, successful.

Theta Alpha Phi opened the college dramatic season with Sutton Vane's *OUTWARD BOUND*, which was first presented as the Senior Class play of 1928. The cast was composed entirely of members of this honorary dramatic fraternity. In December the Class of 1933 revived the custom of presenting a Senior play. Two weeks before the holiday season, an appropriate time, Philip Barry's *HOLIDAY* occupied the boards of Phi Beta Kappa Auditorium. Only Seniors were members of the cast and producing staff. The fifth annual Shakespearean production, *MUCH ADO ABOUT NOTHING*, was the only major production of the second semester. To this production, actors and backstage workers devoted their time and effort to maintain the high standard of production which the four preceding Shakespearean ventures had set.

Upon the invitation of the Williamsburg Theatre Corporation, the Players presented a shortened version of *THE RECRUITING OFFICER*, by George Farquhar, as arranged by the director, Miss Althea Hunt. The play was presented in America's first theatre at Williamsburg by the young gentlemen of the College and the young ladies and gentlemen of the county during the week of September 10, 1736, according to the files of the Virginia Gazette of that year. It was eminently fitting that the William and Mary Players of 1933 should repeat this play upon the opening of the new playhouse in Williamsburg, which stands near the site of the first colonial playhouse, built in 1716.

The Play Production Class introduced itself as a producing unit of the William and Mary Players in November with its program of three one-act plays. In March three members of the advanced class presented three one-act plays of their direction. An annual event of the Players' calendar, the direction by students of the advanced class of original one-act plays by students of the Playwriting Class, was staged in April. Of particular interest in this group was Marion L. Banks' *HOOP OF GOLD*, based upon the novel of Mrs. Maud Hart Lovelace, *THE CHARMING*



SALLY, dramatizing the opening night, September 15, 1752, of the Hallam Players, the first professional company to play for the colonies, at the Second Colonial theatre in America at Williamsburg.

In summary, one hundred and two students have taken an active part in dramatics during the regular session. Sixty-seven of these made their first associations with the dramatic work this past year, of which seventeen were freshmen. Twenty-two Seniors have eagerly participated in campus productions during practically their whole stay in college; several other Seniors entered the work only in their last year.

Completing her seventh year as director of dramatics, Miss Athea Hunt has faithfully and ambitiously carried her cohorts of workers, whom she has handled so efficiently, into new dramatic ventures. Her love and command of the work has instilled into each player and worker, whom she regards as her fellow-artists, a profound admiration.





ED MEADE



DOUG HUBBARD

COTILLION CLUB

Doug Hubbard .
Ed Meade ...
Arthur Vaughn

President
Vice-President
Secretary-Treasurer

MEMBERS

T. H. Ayers
Calvin Branch
T. Bell
J. M. Burke
B. G. Bruning
Sterling Chambers
Donald Douglas
J. D. Hubbard
S. H. Emory
Ray Carroll
Murray Harrison
Wally Lynn
Lucias McElrath
Ralph Murray

L. L. Phillips
Barrett Roberts
Judson Wheeler
Lynwood Wilson
T. R. Winifree
John A. Mapp
Branch Bocock
J. E. Hessian
Carlton Casey
Waddel Stewart
Junie Smith
James Warner

James Ramsey
Edward Boisseau
Richard Velz
Joseph Cridlin
Pete Causey
B. Travers Hulse
G. W. Perkins
W. C. Humphreys
William Palese
Gabe DeSampier
W. Ayers Coard
Edwin Meade

Albert Nurnbaker
John Nottingham
Jack Hitler
James A. Perry
David Agnew
William Tallifer
Louis Carner
Joe Stankus
Jack Watson
Dallis Entsminger
Earl B. Morden
Henry Land
V. S. Early
W. E. Pierce

Nancy Fletcher
 Helen Singer
 Mary Abbitt
 Majorie Smith
 Nauey Armistead
 Sophie Croxton
 Ethel Lee Cross
 Kitty Brooks
 Tammie McClintic
 Helen Dodge
 Ruth Froudman
 Frances Anderson
 Leona Coyte
 Mary Lee Grossman
 Bland Hall
 Sarah Dobbs
 Margaret Thompson
 Olive Darling
 Suzanne Dixon
 Mary Virginia Rigg
 Dot Trent
 Jane Dumont
 Corrine Wall
 Adelaide Mason
 Marion Dcuding
 Ruth Cobert
 Charlen Loeffler
 Margaret Davis
 Alma Watkins
 Evelyn Cocke
 Mary Hunter Talman
 Betty Brunstetter
 Pamela Craft
 Helma Malory
 Phylis Ferguson
 Ella May Bristow
 Nancy Peoples
 Mary Owens
 Clara Sizemore
 Frances Culbreth
 Gladys Anderson
 Jean Hyatt
 Margaret Clark
 Anne Hooker
 Anna Winn
 June Smith
 Ellen Sellar
 Dorothy Tonlon
 Marguerite Stribling
 Bobbie Saunders
 Virginia Jones
 Mary Taylor Withers
 Peg Watherwax
 Leiper Rennie
 Caroline Davis
 Elizabeth Young
 Lucile Gordon
 Delphine Jones
 Micky Ross
 Virginia Romm
 Maxine Duval
 Eleanor Rutledge
 Anne Petty
 Sue Stickle
 Elizabeth Betts
 Eloise Whitehead
 Jane Dugger
 Virginia Mister
 Virginia Horton
 Betty Davidson
 Florence Evans
 Harriet Pittard
 Mary Horton
 Frances Moreland
 Hobbie Howard
 Mary Porter
 Fannie Martin
 Anne Price
 Charlotte Allen
 Emily Dunleavy
 Elizabeth Birch
 Margaret Herndon



GERMAN CLUB

OFFICERS

Honore Wickham	President
Lucie Grossman	Vice-President
Bessie White	Secretary
Lorraine Emory	Treasurer

MEMBERS

Anne Page Moreland
 Betty Chambers
 Betty Armstrong
 Minnie Cole Savage
 Yette Winslow
 Betty Stetser
 Rhoda Pratt
 Marion Hobbs
 Mary Berwind
 Pat Powell
 Peggie Rutherford
 Elizabeth Ridout
 Anne Hyatt
 Doris Robinson
 Sally St. Clair
 Margaret Farmilee
 Clara Thompson
 Joliet Croxton
 Emily Winship
 Carol Stetson
 Lou Lang
 June Ackerman
 Barbara Acker
 Jane Clark
 Muriel Wyman
 Adole Stevenson
 Nelly Bloxton
 Anne Thomas
 Marcia Smith
 Nancy Davis
 Jane Stauger
 Dot Laftite

Maris Lake
 Gladys Monroe
 Dot Nice
 Dot Mack
 Alice Cahill
 Margaret Van Out
 Alexyda Whitehead
 Aubrey Holladay
 Nancy Lewis
 Ewell Crawford
 Leane Lee
 Helen Fadden
 Ellen Davis
 Ruth Willis
 Dot Harris
 Sue Reeve
 Anne Booth
 Ruth Colb
 Julia Knight
 Mary Margaret Brooks
 Ruth Waller
 Mary Hansford Wallace
 Druscilla Davis
 Dora Terrel
 Tootsie Goldbourgh
 Ada Stevenson
 Mary F. McClannihan
 Betty Carmen
 Virginia Goodman
 Dot Nash
 Dot Littlepage
 Betty Gordon

Mildred Heinemann
 Sarah Lacy
 Bill Ethridge
 Grace Hurd
 Madeline Adams
 Margaret Britton
 Kitty Chiswell
 Nancy De Lashmutt
 Elva Eitel
 Elizabeth Garrow
 loez Hernon
 Betty Johnson
 Sue Lancaster
 Helen Perry
 Joan Shank
 Flora Wilcox
 Janis Steel
 Jane Kemon
 Mary Allen
 Anne Weaver
 Edith Manning
 Beth Robinson
 Louise Kindler
 Liz Berger
 Mildred Refo
 Jean Hodge
 Betty Bloxton
 Marion Znydac
 Dallas Dalton
 Margaret Brown
 Lib Poindexter
 Anne Sprately
 Betty Feiser
 Katherine Everhart
 Evelyn Hooker
 Helen Perkins
 Charlotte Adams
 Florence Bainbridge
 Anne Bradford
 Margaret Christian
 Helen Donnelly
 Doris Erwin
 Mildred Harris
 Edith Ide
 Margaret Johnson
 Becky Lee
 Helen Ridgely
 Ruth Sharrett
 Mary Morris Wright
 Edith Hester
 Helen Harwood
 Priscilla Nickelson
 Katherine Selby
 Mande Newberry
 Anne Poindexter
 Winifred Corey
 Kate Bristow
 Lettie Hairston
 Mae Rennolds
 Virginia Rollins
 Minnie Mae Shreves
 Margaret Neal
 Helen Burd
 Frances Goodrich
 Ellasue Carr
 Virginia Alling
 Polly Corbett
 Mildred Mitchell
 Arabella Hubbard
 Frances Meador
 Frances Becklerie
 Anne Chalkley
 Carrol Crowther
 Alice Edwards
 Winifred Freiot
 Rosalie Harrison
 Margaret Irving
 Page Johnson
 Ruth Mahton
 Margaret Shaffer
 Mildred Van Lear



G. G. G.

OFFICERS

Betty Chambers
Minnie Mae Shreeves

President
Secretary-Treasurer

MEMBERS

Helen Singer
Winifred Corey
Grace Heard
Ann Renford
Flora Willcox
Kitty Cubberly
Virginia Goodman
Rhoda Pratt
Virginia Jones
Margaret Clark
Drew Davis

Edith Boyd
Tommy McClintic
Adalade Mason
Ann Poindexter
Mary Raleigh
Helen Dodge
Marion Banks
Betty Chapin
Emily Dunleavy
Lety Hairston
Bobby Howard

Marie Keiley
Dorothy Littlepage
Ann Moreland
Gladys Monroe
Dorothy Nice
Helen Perkins
Katherine Selby
Ann Shaven
Betty Stetser
Billy Pfiel
Elma Watkins

Ann Booth
Sarah Hunt
Muriel Wynman
Virginia Vedder
Edith Hester
Barbara Acker
Claire Thompson
Ann Spratley
Margaret Parmalee
Lilee Smith



K. O. B.

Ann Petty

President

Ann Chalkley

Secretary

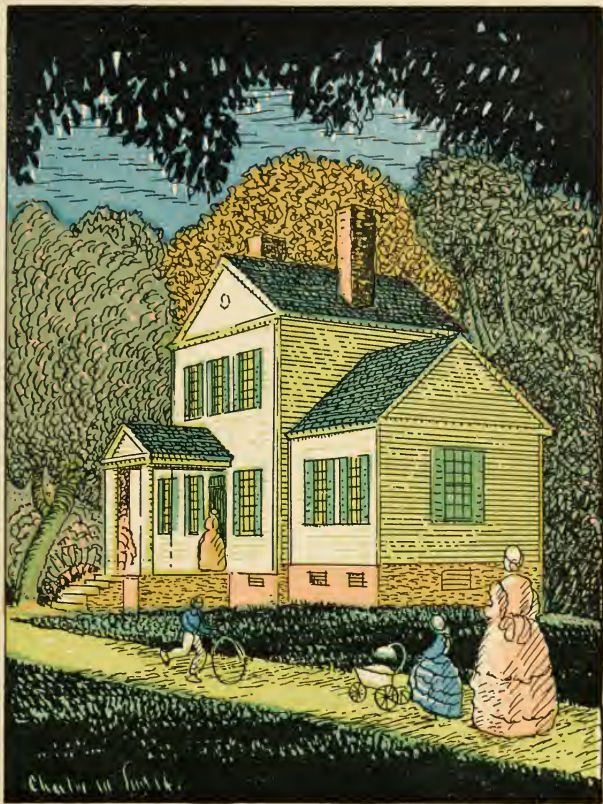
MEMBERS

Sophie Croxton
 Sue Lancaster
 Ann Price
 Virginia Hurdle
 Jene Hyatt
 Nancy DeLashmutt
 Hallie Jane Dill
 Sally StClaire
 Kay Everhart
 Alice Cahill
 Elizabeth Toler
 Mary Virginia Rigg
 Frances Beckerley

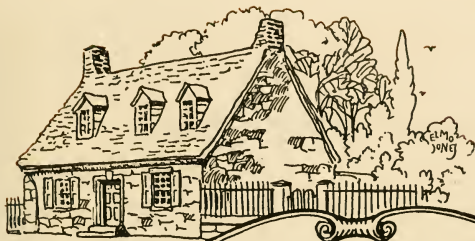
Ann Bradford
 Betty Brunstetter
 Kitty Chiswell
 Leona Coyte
 Ruth Cobbett
 Betty Davis
 Rhoda Henderson
 Arabella Hubbard
 Carleen Loeffler
 Margarite Stribling
 Jane Kemon
 Katherine Wood
 Rachel Black

Juliette Croxton
 Marjorie Smith
 Becky Lee
 Margaret Neal
 Mary Morris Wright
 Leiper Rennie
 Mary Heinman
 Ruth Carr
 Nancy Lewis
 Dot Mack
 Virginia Mister
 Margaret Refo
 Virginia Romm

Ruth Sherritt
 Margaret Thompson
 Bessie White
 Babe Wickham
 Betty Davidson
 Margaret Davis
 Ewell Crawford
 Virginia Horton
 Carroll Stetson
 Dorothy Dunlap
 Jane Steele
 Harriet Pittard



The Children's Hour at the Peyton Randolph House



The
OLD STONE
HOUSE *now*
the POE
SHRINE.

THE stone house on Main Street--the oldest house in Richmond--is now the Poe Shrine, a mecca for tourists and people of literary culture.

Likewise Murphy's Hotel, the oldest hotel in Richmond, has become a mecca for the collegiate---a class who prefer culture and refinement.

MURPHY'S HOTEL RICHMOND VIRGINIA



WE deem it a pleasure and
a privilege to have played
a part in the creation of this Annual
through the medium of our photo-
graphs and thus to have helped per-
petuate the glorious memories of
student days on this ancient campus.

Cheyne's Studio
Hampton, Virginia

"Official Photographer to the 1933 Colonial Echo."

NORFOLK - VIRGINIA



Williamsburg's Nearest Big City

VISIT IT WHENEVER YOU CAN

TYPEWRITER SALES & SERVICE CO.

223 Main St. NORFOLK, VA. Phone 41769

— DISTRIBUTORS FOR —

Woodstock Typewriters :: Victor Adding Machines
The Mimeograph :: Underwood :: Corona :: Remington
Royal Portables :: Used and Rebuilt Typewriters, All Makes

CHESAPEAKE STEAMSHIP COMPANY

BETWEEN

BALTIMORE, YORKTOWN
WEST POINT and RICHMOND

The Convenient and Economical Way for Students to Travel
To and From Home.

FOR RESERVATIONS AND INFORMATION ADDRESS

CHARLES E. MYERS, T. P. A.
141 Granby Street
Norfolk, Va.

H. R. BOWEN, G. P. A.
Light and Lee Sts.
Baltimore, Md.

PENINSULA BANK AND TRUST CO.

Protects

Student Government Funds



Capital, Surplus and Profits

\$180,000.00

State and City Depository



PROMPT SERVICE

COURTEOUS TREATMENT

Photographers • Photo-Engravers • Electrotypers



Engravings for the 1933
Colonial Echo

by

Metropolitan Engraving and
Electrotype Company, Inc.

12 North Twelfth Street
Richmond, Va.



Photographers • Photo-Engravers • Electrotypers

DO you want to know if you are going to succeed? There is but one sure test: Can you save money? If not, drop out, for the seeds of success are not in you.—James J. Hill.

Let us show you why Life Insurance is the best savings plan

The Life Insurance Company of Virginia

Established 1871 : RICHMOND, VIRGINIA : Bradford H. Walker, President



**Seal
of
Service
Safety
Satisfaction
in
Bus Transportation
Since 1919**



... PATRONIZE ...

Peninsula Bus Lines

PASSENGER SERVICE
DIRECT FROM COLLEGE CORNER
TO EVERYWHERE

MAIN OFFICE
Lee Hall . . . Virginia

*Students and Alumni Always
Welcome At Our Home!*

Soda, Luncheonette and Tea Room Service

*"Make Our Home Your Home
When In Williamsburg"*

COLLEGE SHOP, Inc.

Bob Wallace, '20, Manager :: "On College Corner"

GARNER & CO., Inc.

Headquarters for College Men

Williamsburg, Va.



Complete Line of Men's Furnishings

CASEY'S, Incorporated



Williamsburg's Modern
Department Store

●
*Carrying Standard and Na-
tionally Advertised
Lines*

BUILT WITH QUALITY — GROWING WITH QUALITY

Colonial Confectionery and Luncheonette Incorporated

—◆—
When Hungry, See "Steve"
We Serve Regular Dinners Any Time
Special Rates for Students

—◆—
Delivery Service Anywhere in the City

Williamsburg, Va.

Telephone 9185

For the Finest Entertainment Visit the

Imperial Theatre

Williamsburg, Virginia

Successor to the Oldest Theatre in America

When in Hopewell Visit the Beacon Theatre

The Williamsburg Theatre

welcomes the Students of William and Mary

VISIT VIRGINIA'S NEWEST THEATRE

(Operated by R-K-O Corporation)

College Pharmacy.... W. T. HENLEY, Prop.
Prescription Druggist

College Seal Stationery and School Supplies :: Sheaffer Pens
and Accessories :: Soda Fountain and Luncheonette
Nunnally's, Gobelin and Russell McPhail's Candies

Delivery Service



Phone 11

Service Is Our Only Commodity

1891

*Our bank is built on it Our efforts center around it
Our success depends on it*

1933

First National Bank : Newport News, Va.

AYERS GARAGE

Located in Rear of Post Office

Complete Service All Makes of Cars

Fireproof Storage Phone 50

COMPLIMENTS

Watts Motor Corporation

Chevrolet Sales and Service

FRIGIDAIRE

315 York Street - Phone 406 - Williamsburg, Va.

Collins Cleaning and Dyeing Co.

Williamsburg, Va. ☞ Phone 48

Special Attention Given
College Work

COMPLIMENTS OF A FRIEND

WILLIAMSBURG · DRUG · COMPANY

THE REXALL STORE

We Carry a Full Line of Fountain Drinks, Cigars and Sundries

Agents for Whitman's Candies :- Your Trade Solicited

GARDINER T. BROOKS

Real Estate and Insurance

Williamsburg, Va.

Phone 138

Compliments of

W. E. Bozarth Lumber and
Package Corporation

Capitol Confectionery

(where only the best is served)

Clean Food

Clean

Surroundings

Williamsburg :- Virginia

Compliments of

A Friend

THE COLONIAL ECHO wishes to express its appreciation to Mr. Charles W. Smith, who, besides making the prints for this volume, contributed much of his time in designing and suggesting layouts: to Mr. "Happy" Cheyne, who was always ready to get any picture we asked for in the way we wanted it: to Mr. Fred Dabney, who made the engravings: to Mr. Jim Dunn for his advice: and finally to the students for the way they have co-operated with us in assembling the material between these covers. Thank you again.

Annuals, Magazines
Newspapers
for
Schools and Colleges



Let us help you
make *your* publications dis-
tinctive. Estimates and ideas
gladly supplied.



BROWN-MORRISON CO., Inc.

*Printers of The 1933 Colonial Echo and
The William and Mary Literary Magazine*

LYNCHBURG -:- VIRGINIA

