




# THE COLONIAL ECHO

# 1916









Digitized by the Internet Archive  
in 2010 with funding from  
LYRASIS members and Sloan Foundation













# The Colonial Echo 1916

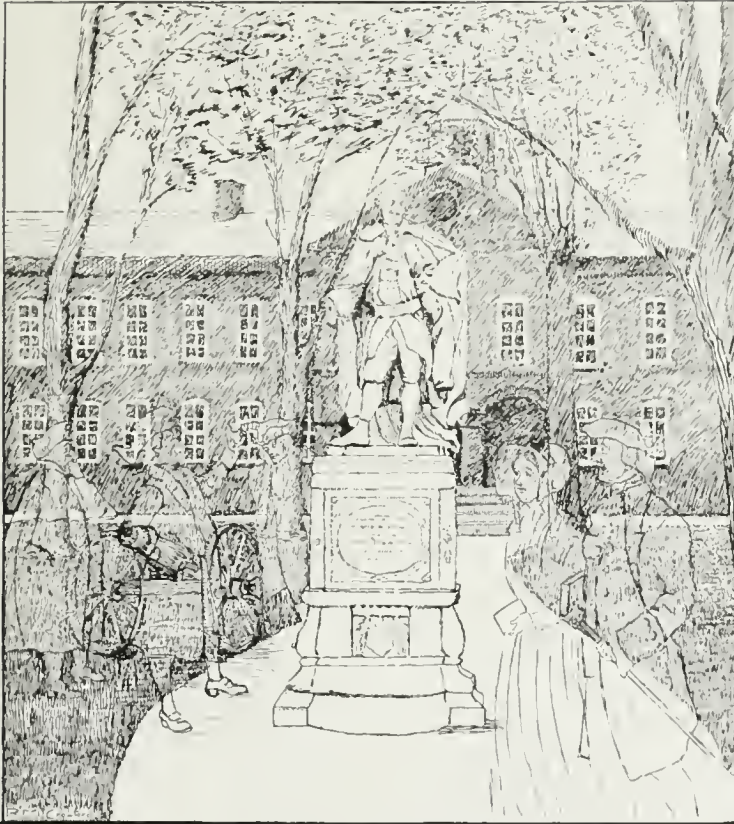


Volume Fourteen

Published by the Students of  
The College of William and Mary  
Williamsburg, Virginia

## Greetings

Very humbly, we, the editorial staff of the Colonial Echo, lay at the feet of our beloved Alma Mater this annual, the modest result of months of patient striving to show ourselves worthy of the trust laid upon us. For any flaws that may be apparent to the critical eye and mind we accept full unconditional blame, urging in our defense only the sincerity of our purpose. But if in these pages our bungling, well-meaning efforts have painted any true picture of the joys and sorrows of campus life that may serve to call to mind, in the days to come, the faces of long-departed friends and the memory of hours that grow softer and sweeter with the passing years, we have not labored entirely in vain.



# DEDICATION

## Dedication

To a scholar, broad-minded and cultured;  
a gentleman, refined and accomplished;  
and an artist, able and talented.

To

Richard McLeod Crawford,  
B. S., M. A.

This volume is affectionately dedicated.



RICHARD McLEOD CRAWFORD, B.S., M.A.

## Traumerei

Splendor of dawn upon the mountainside,  
Glory of youth, wonder of dreams untried,  
Rapture of love adventuring on the hills,—  
The glad sun flashes on a thousand rills,—  
Up, up, O my soul!

Burden of time, burden of dreams belied,  
Burden of dusk upon the mountainside,  
The wild crane veers into the setting sun,  
Racing the shadows, and the day is done,—  
Peace, peace, O my soul!

—MARTIN FEINSTEIN.







Sacred to the memory of  
Thomas Jefferson Stubbs, Ph. D.  
Professor of Mathematics.

Who departed this life November 17th, 1915.  
Mourned by faculty and students as a loyal  
and trusted friend in prosperity or adversity;  
honored by all for his long years of faithful  
service to the college.





INTERIOR OF DINING HALL





INTERIOR OF GYMNASIUM



# COLONIAL ECHO

## Colonial Echo Staff

M.C. FERGUSON  
LITERARY EDITOR

W.M. GRIMSLEY  
LITERARY EDITOR

J.W. STEPHENS  
EDITOR-IN-CHIEF

D.A. SCOTT  
CLUB EDITOR

G.T. CALDWELL  
CLUB EDITOR

R.H. NEWTON — SOCIAL EDITOR





# COLONIAL ECHO



## Colonial Echo Staff



C. MUNCESTER

JOKES and  
GRINDS



G. B. ZEHNER

CIRCULATION  
MANAGER



B. W. WOODS

BUSINESS MANAGER



V. STEADMAN

ACADEMY  
EDITOR



W. EXION

ADVERTISING  
MANAGER



A. TUCKER

ATHLETICS



Colonial Echo Staff

H.P. WILLIAMS  
JOKES and GRINDS

W.W. WINSBRO  
Y.M.C.A.  
EDITOR

V.L. GUY  
ASSISTANT-EDITOR

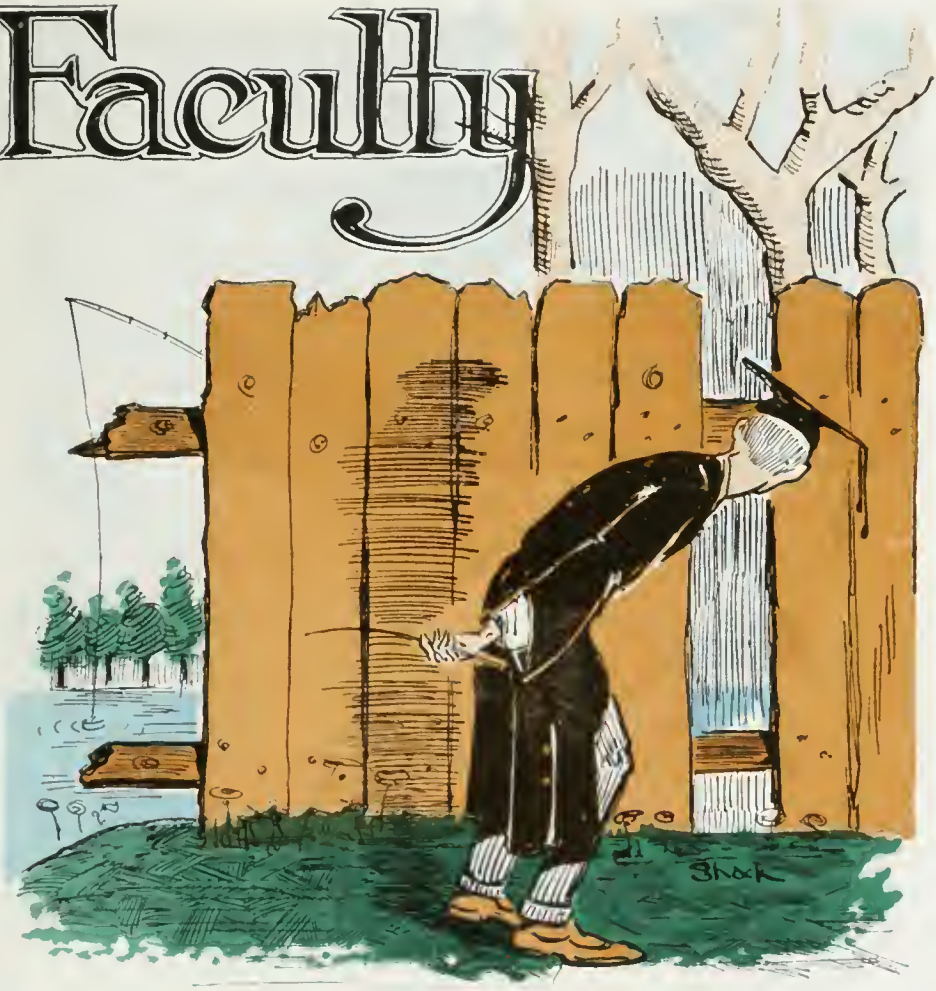
W.S. SHACKELFORD  
ART -  
EDITOR

G.H. NICHOLSON  
PHOTOGRAPHER

A. TOMLINSON  
ACADEMY  
EDITOR



# Faculty



Faculty



JOHN L. HALL, Ph.D.  
Dean of the Faculty  
Professor of English  
Language and Literature



LYON G. TYLER, M.A., LL.D.  
President of College  
Professor of American  
History and Politics



VAN F. GARRETT, A.M., M.D.  
Professor of Chemistry



THOMAS J. STEBBINS, A.M.,  
Ph.D.  
Professor of Mathematics



JOHN C. CALHOUN, C.E.,  
M.A., Litt.D., LL.D.  
Professor of Modern  
Languages



JAMES S. WILSON, M.A.,  
Ph.D.  
Professor of History and  
Associate Professor  
of English







# COLONIAL ECHO



## Faculty



WESLEY P. CLARK, M.A.,  
Professor of Latin and  
Greek



GEORGE O. FERGUSON, M.A.  
Professor of Philosophy  
and Psychology



HENRY E. BENNETT, A.B.  
Professor of Philosophy  
and Education



JOHN W. RITCHIE, B.A.  
Professor of Biology



WILLIAM H. KEEBLE, B.S.  
Professor of Physics



RICHARD M. CRAWFORD,  
B.S., M.A.  
Professor of Drawing and  
Manual Arts



Faculty



D. W. DRAPER, M.D.,  
College Physician and  
Athletic Director



HERMAN L. BRIDGES, A.B.,  
Registrar and Secretary  
to the Faculty



L. GOODWIN, B.S., M.D.,  
Acting Professor  
in Biology

INSTRUCTORS



W. W. WINSBRO, A.B.,  
Instructor in French



W. C. FERGUSON,  
Candidate for B.S.,  
Instructor in Biology



B. W. WOODS,  
Candidate for B.S.,  
Instructor in Physics





## Faculty

### ASSISTANTS



JOHN TYLER, B.S.  
Assistant in Mathematics



CHARLES H. SCHEPMOES,  
M.A.  
Assistant in Chemistry



W. T. WOODSON,  
Candidate for A.B.  
Night Librarian

## Board of Visitors

ROBERT M. HUGHES, Esquire	Norfolk, Va.
HON. JAMES N. STUBBS	Wood Cross Roads, Va.
GEORGE P. COLEMAN, Esquire	Williamsburg, Va.
HON. J. D. EGGLESTON	Richmond, Va.
JACKSON DAVIS, Esquire	Richmond, Va.
JAMES ROBERT JORDAN, Esquire	Smithfield, Va.
HON. JOSEPH M. HURT	Blackstone, Va.
HON. WILLIAM M. ELLIS	Shawsville, Va.
W. C. L. TALLAFERRO, Esquire	Hampton, Va.
HON. MANLY H. BARNES	Providence Forge, Va.
HON. I. P. KANE	Gate City, Va.





# COLONIAL ECHO



GRAVE of BLAIR



MONUMENT to JOHN SMITH



JAMESTOWN from the RIVER



The OLD CHURCH



JAMESTOWN MONUMENT

## THE CRADLE OF THE REPUBLIC





# Classes





# Seniors

## Senior Class

Motto: Tout bien ou rien.

Flower: Forget-me-not.

NOTE: "The Class of 1916 is the largest and most representative class graduated from this institution in my remembrance."—ONE OF THE FACULTY.

### OFFICERS

ROBERT M. NEWTON	President
GEORGE B. ZELMER	Vice President
CHARLES A. MONCASTER	Secretary
H. WILSON THORPE	Treasurer
FREDERICK D. G. RIBBLE	Historian
JAMES W. STEPHENS	Prophet
WILLIAM C. FERGUSON	Poet
CHARLES A. SCOTT	Valedictorian
RICHARD B. GAYLE	Chaplain

*Candidates for B.A. Degree*    Armistead C. Gordon, Jr.

Ray R. Addington

Richard B. Gayle

Robert L. Combs

*Candidates for B.S. Degree.*

Vernon L. Guy

George T. Caldwell

\*William M. Grimsley

William C. Ferguson

William D. Harris

Edwin R. James

Nathaniel H. Jennings

Hugh H. Jones

Charles A. Scott

Charles A. Moncaster

James W. Stephens

John M. Presson

H. Wilson Thorpe

Bittle W. Woods

Arthur P. Tucker

George B. Zehmer

Harvey P. Williams

Robert M. Newton

Wilbert T. Woodson

William E. Zion

Frederick D. G. Ribble

*Candidate for M.A. Degree*

William W. Winsbro

\*Deceased







WILLIAM WINSBRO,  
Front Royal, Va.

A.B. Degree, '14; Colonial Echo Staff, '16; Instructor in French, '16.

"Billy" is what we call our lonely little M.A. applicant, and out of sheer pity we have let him attend all our Senior Class Meetings, where he keeps properly quiet and sedate, as is befitting a superior who has already borne off an A.B. degree. But being consumed by the thirst for knowledge and a keen memory of the many naps that may be snatched at college, "Billy" strayed back to us last September and announced that one A.M. degree was in danger. The Faculty resigned themselves to the prospect of being "curled" and in an effort to tame "Billy's" ferocity, they lured him into teaching French I. to the awed "Dues." "Billy" has succeeded in this Herculean task of cramming knowledge into their unresponsive skulls, nor has he slacked a moment in his pursuit of A's. He's a hard chap to stop when he goes after anything, and a harder chap to keep from liking and admiring; honest, straightforward, and sincere, he goes straight to your heart.





RAY RUFUS ADDINGTON,  
Ridgeville, Ind.

Sigma Phi Epsilon; Baseball Team, 1912-'13, 1913-'14, 1914-'15; Study Hall Proctor, 1913-'14, 1914-'15; Assistant Baseball Coach, 1915-'16; Principal of Magruder School, 1915-'16.

Before us we have a real "ray-ray" college man! Ray is a pure Yankee, as we know them, having strayed down here from the farm in Indiana, and he came so near annexing a degree in three years, that he was able to make his college work only a side issue this year, and to instruct the young and ignorant of Magruder. He comes in to us nearly every day on his wheel in order to snatch away those last few credits that mean so much to him. But when spring comes and the baseball prospects begin to file out on Cary Field, we are going to miss him down at first base, and his snarl that makes an erring umpire quake in his shoes and feel to see if his gun is in position. Ray has been one of the most valued players on the team for three years and he showed his versatility by playing a new position every year.

Ray has the qualities that go a long way toward making a success in life, and one of these days he will come hobbling up into the public eye in a way to reflect honor upon his Alma Mater.





# COLONIAL ECHO



GEORGE THORNHILL CALDWELL,  
Concord Depot, Va.

Kappa Sigma; Phoenix; German Club; Manager Football Team, '15-'16; Colonial Echo Staff, '15-'16; Inter-Fraternity Conference, '15-'16; President Tennis Club; Athletic Council, '15-'16.

The serene face that stares out at you from this page is known as "Pete," on the campus. This slim young man has a quiet way of going out and getting what he wants without the least tooting of horns or other display. The better you learn to know "Pete" the more it strikes you that he is a man to be called upon when there is work to be done and the laborers are few.

If you have ever seen "Pete" when he wasn't as neat as the proverbial pin, and as calm as the proverbial Stoic, you have seen a sight that has been permitted few of us. A lion with the ladies, when the humor seizes him, respected and admired by his fellows, and praised by the Faculty is "Pete."

It was under "Pete's" able guidance that the football team wandered up to Delaware last fall and the boys say he treated them like so many kings. If the editor wasn't so peevish, we would like to ramble on and enumerate Pete's virtues at length, but we can, at least, advise all our readers that they will do well to keep an eye upon this young gentleman after the campus gates have closed behind him.





ROBERT LINCOLN COMBS,  
Jonesville, Va.

Sigma Phi Epsilon; President Southwest Club; Big Chief, Brafferton Indians; Baseball Team, '13-'14, '14-'15; Debating Team, '16; Literary Magazine Staff, '16; Student Council, '15.

When the great Marduk, in a fit of efficiency, undertook to clear the world of chaos and disorder, he inadvertently overlooked the subject of our sketch who was created out of the material left, mixed with the radium of sincerity. His whole bearing, from his tolerant forbearance of the dues to his debonair way of pegging them to second, illustrates this. Since he has been with us, as the fly of ignorance in the ointment of college, he has achieved quite a few things worthy of enumeration. Athlete, student and literary cuss, his modesty has increased with his ability. He is a healthy example of the kind of fellow who puts his best into everything.

How many of us have forgotten that wonderful batting streak "Jawn" had one spring when he was wearing the windpad for the nine? It is whispered around the campus that Jack's heart is true to a little Lee County girl, but Jack hasn't let us on to that secret.





WILLIAM CROSS FERGUSON,  
 Leesburg, Va.

Kappa Sigma; Sigma Upsilon; Spottswood; Chairman Student Council; Varsity Football Team, '12-'13; Manager Football Team, '14; Editor-in-Chief Flat Hat, '15-'16; Colonial Echo Staff, '16; Chancellor Scholarship, '13-'14, '14-'15; President of Phoenix, '14-'15; Debate Manager, '15-'16; Chairman Inter-Fraternity Conference, '15-'16; Instructor in Biology, '15-'16; Senior Class Poet.

"Little Ferg"—smallness being only in stature. Otherwise, Ferg, the many-sided, the intelligent. His keen intellect and common sense have served to push him into every department of the great academic workshop, and his good judgment has stood him in good stead upon many occasions. His value to his fellows is manifested most eloquently by the list of his honors, and they also serve to show how he will be missed from the campus. In his graduation, William and Mary gives to the world a man that is sure to do as much good there, as he has done inside of the college gates. In a final word, one of the most real college men on the campus, he has been active in every department of college life as a worker and leader.





RICHARD BROWNLEY GAYLE,  
Portsmouth, Va.

Kappa Alpha; German Club; Manager Basketball Team, '15; Member of Football Team, '14-'14, '14-'15, '15-'16; Member of Basketball Team, '13-'14, '14-'15, '15-'16; Athletic Council; Monogram Club.

Dick—a real athlete, a steady student, and an ardent admirer of the ladies. He descended upon us from Portsmouth and judging from the length of his limbs, we feel sure that his early occupation was crabbing. He made his debut at William and Mary by winning fame in athletic circles, and for three successive years he has been a regular on the football and basketball teams, where his work has steadily grown better.

And we must admit that Dick is a student of parts, for he is one of the few who can wrest away a degree in three years without being a hermit or grind.

Likewise, we beg you to remember that Dick dearly "loves the ladies," and he trips through every dance like a second Castle. Have you ever attended a football game; seen Dick go smashing into the line for a good gain, and not heard the dear little damsels cheer and call him an angel?

But listen, Dick, to the frank opinion of your fellows, you are every inch a man and a credit to our class. Au revoir, success is awaiting you.





ARMISTEAD C. GORDON, JR.,  
Staunton, Va.

Pi Kappa Alpha; Philomathean; Phi Beta Kappa Scholarship 1913-'14, 1914-'15; Tennis Manager, '16; Black Hand.

No, it is not a tornado, nor even an earthquake—it is only "Duc" Gordon going down the steps! And that electric horn? Oh! no, that is only his yell, youth must be served and, then, he has such a powerful set of lungs.

Yes, you are face to face with the youngster from Staunton, who for a wonder kept still long enough to have his picture snapped. "Wing," as his friends call him, came to us three years ago from Staunton Military Academy, which he described to us a sort of second heaven. It took us years to get him off that subject, and concentrate his attention up the damsels of our city.

He has a wonderful fund of information on a variety of subjects, and an uncanny ability to do anything he sets out to accomplish. You can't help liking him—as the town girls say after he has departed with three of their handkerchiefs and a pocketfull of their "dad's" cigars.





WILLIAM MORGAN GRIMSLEY,  
VanDyke, Va.

To our beloved classmate who was called suddenly from our midst into the mystery of the Other World, laying down his life in the very flower of his manhood, and when the prize for which he had so bravely striven was almost in his grasp.

We, the classmates and friends, will cherish his memory forever in our hearts, and we feel that the pride of our final achievement will be saddened by the thought of the familiar face that is gone from the campus.

Up-right and honest, chaste and god-fearing, was William Grimsley, and the bitterness of our loss is abated by the reflection that he, out of many, was best prepared to pass into the Great Beyond, and to answer to his name at the Judgment Seat.







VERNON LAWRENCE GUY,  
Portsmouth, Va.

Sigma Upsilon; Philomathean; Magazine Staff; Sophomore Historian;  
Colonial Echo Staff, '16.

All who gaze at this resemblance are sure to be impressed by the halo of intelligence emanating from it. And so it is with Vernon Guy, known to his friends as "Puss" Guy. He is one of the most intellectual men among our number; and he can go through a German text faster than a girl can skim through a best-seller. But ask him what Physics did for him. He likes science so little that he only enters the Science Hall on flying trips to see his monthly grades, which are usually A's. This year, for some reason at which we can guess, he takes only a fatherly interest in the college and attends a few lectures a week, but most of his time is spent in a certain part of the town. It is certain that he has not yet attended a Senior Class meeting, and he doesn't take his position on the Echo Staff very seriously.

Come on, "Puss," and show your Alma Mater what you can do. In the future make the class of '16 proud of you.





WILLIAM DURHAM HARRIS,  
Virgilina, Va.

Sigma Upsilon; Editor of Literary Magazine; Member of Debate Council; Highest Scholarship Honors, 1912-'13; Improvement Medal in Debate, '12; Final Debate, '15; German Club.

"W. D.'s Junior write-up is responsible for the rash assertion that our hero was born forty miles from land or water in a shadowy, unplaced land, but investigation clears him of this charge. He is a native of Virgilina, Va., and while they haven't named any streets after him yet, the town has a most worthy son to be proud of. That "W. D." stands out among us is attested by the incomplete list of his honors above. Although not physically of the bulk to represent his college in an athletic capacity, he has more than atoned for this by representing her in a literary capacity, reached by few and excelled by none. In scholarship when he has not been residing at the top, he is invariably found to be only a few strides back.

For you, "D. D.," we prophesy a bright future, and as long as your loyal old heart continues (?) to beat, we'll be glad to grasp your hand and hail you as one of the class of '16.





EDWIN RALPH JAMES,  
Dendron, Va.

Sigma Phi Epsilon; German Club; Philomathean; Rifle Club; Tidewater Club; Second Baseball Team, '13-'14; Track Team, '14-'15; Teacher's Diploma; Delegate to State Y. M. C. A. Convention.

"Pinkey" is our little crimson-domed lad from Dendron, the town already made famous by Schepmoes, "The Human Question Mark," but he has been with us long enough to live down his home team. He is quite a man of parts around this camp, and his sunny head has a way of bobbing up on all occasions. Pinkey has degenerated into a Physics shark, but he does find rough going in translating the language of our southern neighbors. There have been only a few things that "Pinkey" has not tried since he came to the college, and he is one of the most faithful workers and respected men we know. Freely we prophesy a wonderful future for him if he doesn't get married too soon.





NATHANIEL HALL JENNINGS,  
Toano, Va.

Philomathean; Lawyers Club; Toano Baseball Team; Principal of Five Forks School, '16.

Hush! You mustn't call him "Nat" now, fellows, for he is principal of Five Fork's largest and most up-to-date school, and a person of dignity and fortune. Of course, the people up there know he is from Toano, but they forgive him as readily as we did. "Nat" is another one of those restless Seniors who finished up in February and went out into the world to gain wealth and fame before Finals. He comes in to see us on rare occasions, smoking a foug black cigar and flirting calmly with the less reserved of the city damsels.

"Nat" has been the butt of more jokes since his arrival here than any man on the campus, but we have yet to see him when he did not have a quick and ready reply. That keen mind of yours, "Nat," is going to make you famous one of these days.





HUGH HOWARD JONES,  
Williamsburg, Va.

Philomathean; Varsity Football Team, '13-'14; Captain Championship Basketball Team, '15-'16; Forward on Basketball Team for four years.

Strange will it seem that there can be a basketball team at W. and M. without one Howard Jones being present in the role of forward, for Howard has been one of the team's mainstays for four years. Speed, size, skill, and experience, coupled with a happy knack of being able to leave the floor once and to jump twice at the same time, have made him a terror to visiting teams. And the Captain of the Champions—we envy him!

In literary society work, he is no slirker, and seems to have an inexhaustible supply of data on a variety of subjects. Also, Howard, established a reputation as a twister in "Prex's" Economics Class.

Readers, in Howard Jones we have a man; patient, persevering and a true friend. Were there more space we could tell more of our hero, but we can sum him up in the phrase, a man!



COLONIAL ECHO



CHARLES ASHLEY MUNCASTER,  
Norfolk, Va.

BY REQUEST





ROBERT MURPHY NEWTON,  
Hague, Va.

Pi Kappa Alpha; N. N. O. Business Manager Flat Hat, '15-'16; Vice-President of the Phoenix, '15-'16; President of the Senior Class; Vice-President of the German Club; Monogram Club; Baseball Team, '13-'14, '15-'16.

This is Robert Murphy Newton. A pretty name, even poetical, so much so that our class poet might have used it in his verses. But he seldom has the pleasure of being called by this name, his lady friends—for he can smile—preferring him as Mr. Newton (daintily), while the boys know him by the simple, old “Bob.”

“Bob” came up many, many years ago out of the Academy where he had made forty minutes and entered with flying colors. He was not long in this institution, however, before he met Dr. Cally’s German and since then his life has been one terrible nightmare, trying to tell the difference in the pronunciation of the German “ei” and “ie.” But he is otherwise a good student and all-round college man. “Bob” is loved by the whole student body for his genuine and upright qualities.





JOHN MORRIS PRESSON,  
Hampton, Va.

Theta Delta Chi; Phoenix; German Club; Student Council; Teacher's Diploma; Treasurer of Senior Normal Class, '15; Athletic Council; Manager of Baseball Team, '16; Cheer Leader.

John Presson, known as "Long John," is only six foot three, and so thin that a ten mile gale whistles around him. He is some curlier and one of Dr. Hall's "much loved" science men. Chuck full of college spirit and bubbling over with love for his Alma Mater, John's elongated form is a welcome sight on the campus.

John hails from Hampton, and is very proud of the fact that he was once permitted to expound his theories to the children of Norfolk County. At one time this session, he was a steady regular at the W. F. L., but since part of the Faculty failed to return, John has gone into retirement.

As baseball manager, John has smashed all precedents, by writing a girl's school for a game, and being horrified at their offer to give him a ping-pong game.

Press on, John, we wish you God-speed!







FREDERICK DEAS GOODWIN RIBBLE,  
Petersburg, Va.

Kappa Sigma; Sigma Upsilon; Phoenix Final Debate, 1915; Souther Scholarship, 1915; Vice-President Y. M. C. A., 1915-'16; Flat Hat Staff, 1915-'16; Historian of Senior Class, 1915-'16; President of Phoenix, 1916.

This youthful prodigy is another of those students of ability who wring a degree away from the reluctant Faculty in three years and who never appear worked to death while they are doing it. Dean is able to address you in at least three languages which he has picked up in William and Mary classrooms, and his knowledge of Greek would make Demosthenes envious.

The most unassuming man in college and if you don't know him, we'd hate to tell you what you have missed. For sterling worth and sincerity of character, you won't find a man in the class of '16 who can quite surpass him. His smile and unfailing good humor have made him a host of friends on the campus and in the city.





CHARLES ALEXANDER SCOTT,  
Brookneal, Va.

Phoenix; Magazine Staff, 1915-'16; Colonial Echo Staff, 1915-'16; Athletic Association, 16.; Valedictorian of Senior Class; Literary Society Medal; Student Honor Roll.

Here is the pride of our class—our most accomplished joke teller and all-round good fellow. A smile that never fades, a wit that never fails, and friends who never change; all these has "Skinny" in abundance, as some slight reward for his sunny disposition and clean manhood. The Faculty shake when he strolls leisurely up to the front seat and answers questions before they are asked; he can yell louder than the most ardent "Soph" at a game; and you can't back him down on any kind of a proposition.

Keep on wearing that magic smile, "Skinny;" the success that has come to you has been honestly earned, and the friends you have made will never forget what a sincere, lovable old chap you really are.





JAMES WARDEN STEPHENS,  
Wicomico Church, Va.

Pi Kappa Alpha; Sigma Upsilon; Spottswood Club; Phoenix; Senior Class Prophet; Editor-in-Chief of the Colonial Echo, '16; Inter-Fraternity Conference; Magazine Staff, '13.

Jim is a great old boy, sincerely loved by his fellows, and by the ladies—for he is a thorough “calico” sport. High grades never appeal to him, but he’s a wizzard with the pen. The excellence of his short stories have won him the name of the most literary man in college, which sentiment resulted in his being put in charge of the Annual. Quiet, in the confidence of his ability, he is a man to be watched in any contest he may choose to enter, for he has brain enough to stand with the keenest. A dry wit and a keen sense of the ridiculous make him welcome when good fellows gather. Let us have more men like Jim, unassuming, honest and sincere.





H. WILSON THORPE,  
Dumbarton, Va.

Pi Kappa Alpha; Debate Council; Treasurer Senior Class; Philomathean;  
Vice-President of the German Club; President of the Philomathean, '14-'15.

Still another of those vagrant Seniors who stole off after the dark days of January with the required number of credits piled up in the registrar's office. Lean close and I will tell you the real tragedy of Wilson's life; not that his name is Hi——, but that he was once so terribly weak as to spend a year at Richmond College. In order to live down that cardinal sin, he had to hustle around and show the fellows that he was a sincere and thorough convert, but he finally achieved a little distinction around the college solely upon merit. The squarest kind of boy, unoffending and sincere, he has won the respect of all in his brief stay in our midst. But we, of the Senior Class, will welcome him royally when he rolls in before Finals to take away his degree.





# COLONIAL ECHO



ARTHUR PEOPLES TUCKER,  
Merry Mount, N. C.

Pi Kappa Alpha; Baseball Team, '13, '14, '15; Captain Baseball Team, '14-'15; N. N. O.; President Junior Class; Colonial Echo Staff; President Athletic Council; German Club; President Monogram Club.

Arthur Peoples Tucker—no, not that, just plain "Buck!" No introduction is necessary, everybody knows "Buck" which means that they know a man and one who stands for what is best and most wholesome in every walk of life.

And he was born a baseball player, constituting just about one leg on our '14 Championship Cup. When he dons the uniform around the third sack, the hot ones with fuzz on them are his pie. His sign reads, "Good-bye, Mr. Man, your job's gone!" And when he dons another kind of uniform before the fair dames, it's about the same tale—everybody else has to drop out.

"Buck," you're an important man around here, and everybody likes you, from the babies up. You have proved to us that your foundation is rock, your purpose steel, and your word gold. Here's our hand, with the best and warmest grasp that's in us.





HARVEY PAGE WILLIAMS,  
Brookneal, Va.

Theta Delta Chi; State Student Honor Roll; Spottswood; Vice-President Senior Normal Class, '13-'14; Instructor in Academy, '15-'16; Teacher's Diploma, '13-'14; College Quartet, '15-'16; Colonial Echo Staff, '15-'16; German Club; Phoenix; Substitute Basketball Team, '16; Baseball Team, '15-'16.

"Red," so called from the color of his plunage, is our Jack-of-all-trades, who can yowl, perform on the piano for hours at a time, dazzle the damsels with a line of selected repartee, be an athlete of distinction, and scholar enough to rank among the best in college. Nor is there a man on the campus who can tell as good a joke, or laugh as heartily as can the innocent subject of our sketch; and many is the time that he has been the object of that touching old chorus, "For He's a Jolly Good Fellow." Irving Cobb and Bud Fisher who look foolish as humorists if they had to stand beside Skinny Scott and Red, our funny lads from Brookneal. It's worth going to Dancing School to see "Red" gliding and whirling around the floor with the grace of a Greek god.

Taking him all in all, "Red" is hard to beat and still harder to keep from liking. He has the best wishes of his class.





# COLONIAL ECHO



BETTLE WINFORD WOODS,  
Pearisburg, Va.

Southwest Club; Business Manager of the Colonial Echo, '16; First Place on State Student Honor Roll, '13-'14, '11-'15; Instructor in Physics, '15-'16; Manager of the Track Team, '15-'16; Philomathean; Member Track Team, 1913 to 1916; Rifle Club.

This black-haired lad bears the reputation of carrying around more real gray matter under his cap than any other man in the Senior Class. He doesn't know what it is to receive less than an A and if he ever studies he hides it from the student body. In Physics he has advanced until it is quite a simple matter for him to figure out the weather for months ahead by a few original formulas. But the hardest task that has ever been imposed upon his good nature is that of caring for the finances of the Colonial Echo, and trying to keep Earl Zion in the straight and narrow path at the same time. As an athlete, Woods is an earnest worker who doesn't know what it is to quit on the gridiron, and who can run a greyhound down in a handicap race.

Unless he changes quite a good deal from the boy we have known for four years, he will make his mark when he jumps out boldly into life.





WILBERT TUCKER WOODSON,  
Crozet, Va.

Sigma Phi Epsilon; President of Rifle Club, '15; German Club; Teacher's Diploma, '14; Vice-President of Junior Class, '14-'15; Night Librarian, '14-'15, '15-'16; Pan-Hellenic Council, '15-'16.

"Willie"—but not "Wee Willie"—is one of the most loyal and most sincere boosters around the campus. His big towering figure may be seen wherever the interests of the College are concerned and he carries his smile around at all times. Genial and ever ready to accommodate, his face will be missed next year in the library where he sits nightly to distribute books to the thirsty seekers of knowledge who come thronging to his desk. Just to show that he was one who believed in "preparedness" and all it stands for, "Willie" let the Rifle Club put him at their head, and to his efficient leadership we are trusting mightily during the dark days of the future when the Kaiser gets peeved.

Among the ladies—but hush! let the girls tell you; it's their secret. Nor do we disagree with the professor who called him the most faithful student in College.

Now! Wilbert Tucker Woodson, here's to you: an esteemed and honored member of the class of '16.







GEORGE BASKERVILLE ZEHMER,  
McKénnéy, Va.

Theta Delta Chi; Manager Baseball Team, '14-'15; Baseball Team, '14-'15; Colonial Echo Staff, '15-'16; Student Council; Study Hall Proctor; Instructor in Williamsburg Schools; Basketball Team, '14-'15, '15-'16; Y. M. C. A. Phoenix.

Charles Darwin knew whereof he spoke when he remarked that the toughest—or his word was “fittest”—survive. G. B. is still with us after six years of hard work during which he has sampled everything from Eng. A to Educ. 21.

As a member of the Championship quint of '16, as a member for three years of the baseball team, he has carved for himself a niche in the athletic hall of fame. But to recount the conquests of this Alexander, we must pass to other worlds, and in the class room we find his ability envied by more than one. The Academy ducs have felt the weight of his mighty hand as Study Hall Proctor and the High School called him in for his scientific knowledge. Athlete, student, teacher, booster, and a square, popular fellow, what more can be said!





WILLIAM EARL ZION,  
 Pennington Gap, Va.

Southwest Club; Baseball Second Team, '14-'15; Colonial Echo Staff, '16; Championship Basketball Team, '15-'16; Basketball Team, '13-'14, '14-'15; Secretary of Junior Class; Monogram Club; Declamation Medal, '15.

President—of the class, no, but President of the Right Honorable Board of Ramblers, Rounders, and Roughnecks. We purposely put his picture on the back page to keep our readers from punning on his name. (He doesn't live up to it!)

The sight of him in basketball togs makes a smile of delight flit around the gallery, for in spite of the fact that he is reputed awkward in the game, he usually manages to score enough points to win the game all by himself. He is one of our Champions.

In the classroom he is a mystery, and it seems that he has a secret formula by which he mixes his loafing and his working, for he never studies and never thinks. When he gets in the humor, he can make noise enough in Ewell to wake the dead sleeping under the chapel, and his faithful old pop-gun is always there during a celebration.

Popular, quick, good-natured and respected, we number Earl Zion as one of the finest fellows in college.



## Senior Class Prophecy



X the first place, my halo had never fitted.

Having dropped into the Official Observatory one fine morning to remedy this defect, I found to my dismay that my entire earthly record would have to be gone over before the change could be made. I protested.

"You see," explained St. Peter politely, with his eye glued to the golden telescope, "it is our custom to proportion the size of halo to your earthly good deeds, and I'll have to consult my books before giving you any decision. However, if you'll be kind enough to climb up here and keep a bright lookout upon the world for a few minutes, I'll take the matter up with the clerk in charge of that department. Simply

call out your observations to my stenographer over there in the corner and he will enter them in shorthand."

I assented eagerly, and mounted to his stool as soon as the good man had quitted it. And here follows the result of my observations, exactly as I called them down to the clerk and as he recorded them:

ZEHMER, G. B.; Missionary extraordinary to the Funkli-hunchi Islands. Owns twelve children and a mortgage. Expected up here in about three weeks, that being the date of the Annual Missionary Barbeque. His hair has turned white as a result of his sojourn among his cannabalistic children and he squints.

SCOTT, "Skinny"; Agriculturist, Planter and Farmer. Owns pig, horse, pipe and whiskers. For telling poor jokes to his neighbors, credit one black mark on the permanent books.

HARRIS, W. D.; Editor of the Tubville Daily and starving as his fame as a journalist increases. Having lost fifty pounds of flesh, he is recognized as a rising young author. His "Ode to a Grecian Milkcan" established his fame in Abyssinia. Has a decided knock in his heart.

CALDWELL, "Pete"; Peter is at present ranked as heavy-weight champion of the world, having killed with a single blow his most dreaded opponent in a recent bout. Is minus six front teeth, has a game ear, and no nose worth mentioning. His next fight is with "Battling" Bumone for a thirty cent purse, win, lose or draw.

JAMES, "Pinkey"; Pinkey likewise is famous, but in a different field, being a vivisectionist. Celebrated for his discovery that a knife inserted in the heart of a dog will cause both pain and death. Has very recently published, "The Flea from a Bisymeteratical Viewpoint." Wears a monocle and light whiskers—two black marks on permanent books.

GORDON, "Duc"; "Wing" was a singer in New York's worst choir where he overcame thousands. At present in the Tombs awaiting trial upon a charge preferred by the Anti-Noise Society. His conviction certain.

JENNINGS, "Nat"; The prosecuting attorney of the City of Toano. Widely famed for his masterly defense of a prisoner charged with expectrating on the city sidewalks on February 31, 1929. "Nat" is Captain of the Toano Baseball Team and a member of the city Rekop Club.





# COLONIAL ECHO

1 - 9 - 1 - 6



GAYLE, "Dick"; Handwriting expert. His testimony in the breach of promise suit of Miss Foppy Witless against Hiram Thorpe resulted in a victory for the prosecution. It is rumored that the defendant had hard feeling; charged Dick with incompetence. Judge Jennings sentenced him to twelve years at hard labor.

RIBBLE, F. D. G.; Run out of three states by the authorities. Killed six men and a dog with his Golden Discovery. Makes impassioned speeches on his trips, and 200% profit on his medicine. Has narrowly escaped lynching several times. Has grown fat on his own patented medicines.

WILLIAMS, "Reddy"; "Reddy" is divorced. Having won the affections of an unending string of ladies, his wife objected to his dancing. "Red" sued for divorce and got it when he proved that his wife had only one good eye, no true teeth, and was bald at times. "Red" is now teaching Economics in a girl's school.

WOODSON, "Willie"; Head of the Microscope Detective Agency. He worked alone on the case of the mystery of the open door. His masterly analysis of that case resulted in the discovery that the door had been left open. Changes his disguise every day and wears a razor, gun, and hatpin.

NEWTON, "Bob"; Practices upon that branch of the animal kingdom known as horses. His treatise upon, "Distemper, Its Causes and Cures," is recognized as a masterpiece of ignorance and misinformation. Inventor of the spectacles for horses that are so widely worn by these animals during the last few years.

WINSBORO, "Bill"; Strong man, extraordinary in a circus. Is kept under the closest confinement on account of his ferocity and a certain appetite for human flesh. Was a piano mover until he upset several houses, when he joined the circus to escape the militia.

THORPE, "Hiram"; "Yours Truly" is at present intensely interested in the construction of State roads, so intensely interested that he is breaking rock for them in a striped suit. Was sent up for bigamy when his twelfth wife showed up as he was at the altar. His term has expired, but he prefers to remain, for reasons he won't divulge. His twelve spouses are waiting at the prison gate.

ADDINGTON, "Ray"; "Ray-Ray" is Mayor of Magruder, beating out Farmboy Simple in the recent election and rolling up a record vote of seven. Has put baseball upon the civil service list and given up umpiring in order to take life insurance. His factory reforms have done a great deal to increase his salary.

PRESSON, "Jawn"; Speaker on Equal Suffrage. His motto is to please the ladies. Has been confined several times for breaking windows in demonstrations, but has escaped by using the "hunger strike." On one occasion he fell away to fifty pounds. Is one of the principal speakers at the coming Convention in Five Forks.

FERGUSON, W. C.; "Ferg" is a Spiritualist, Seer and Prophet. Foretold with astounding accuracy the coming of 1917. Credited with being the first to predict that Haley's New Comet would not strike the earth. The police are his friends; the superstitious his meal-ticket.

MONCASTER, C. A.; "Monk" is the prodigy who squared the circle. Is also quite an authority in the medical world. He performed the delicate operation of removing John D.'s appendix only two days before the patient died of heart trouble. Diagrams all his cases before he operates; and never misses cutting in the wrong place, to which his fame is due.





WOODS, B. W.; Country parson of the Faith Healer Church. Tramps twenty miles to church every Sunday, and has given up his loud ties. Is a widower with twelve children and no income.

COMBS, R. L.; "Jawn" is the sternest Circuit Judge in Virginia. Some of the most talked-of cases on record have been tried in his court. No one had ever been acquitted in this court, as his guilt is taken for granted. His remarks to "Hiram" Thorpe whom he sentenced for bigamy, may be read in Dr. Dryasdust's "Court Misprocedure."

TUCKER, A. P.; "Buck" is a traffic cop in Merry Mount, the city of his birth. Hours from six to six. Resigned as World Secretary of the Y. M. C. A. to take this responsible and lucrative position. He has been given a holiday on the Fourth of July when he will address a gathering on the subject of, "The Delicate Responsibility of My Position."

JONES, H. H.; Howard is at present the leading actor in a local picture company that is about to produce, "The Romance of John Smith." Howard is playing with the greatest success, the villain. Has sold his farm and rides in limousines. Is in danger of getting married.

GUY, V. L.; Vernon was practicing medicine in Squeedunk, but he appeared to be really practicing for all his patients died. He is in jail, waiting impatiently to be lynched tonight.—

Here St. Peter came hastening back to tell me that my halo had been forfeited for some misdeed that he had only then discovered, owing to poor bookkeeping. I climbed slowly down and went out.

And walking sadly down the street, I bumped squarely into Zion with a halo on his head large enough for an umbrella. After all, it seemed only appropriate that *he* should be there.

---

## The Regretary

The hours I spent with thee, dear heart,  
 Have brought a string of D's to me,  
 I look them o'er, each D apart,  
 My goodness me!

Each hour a cut, each cut a flunk,  
 To still a "prof" by absence wrung,  
 I tell each cut unto the end and there  
 A D is hung.

Oh! memories that bless—and burn!  
 Oh! barren gain, and bitter flunk!  
 I check each cut and strive at last to learn,  
 To take my D,  
 Sweetheart,  
 To take my D.





# CAMPUS SCENES







# COLONIAL ECHO



PAUL DEERING  
*Sigma Upsilon*

Somehow, words fail when we try to write about Paul. The usual expressions will not satisfy. Those of us who have been privileged to be his classmates, and in fact all who are part of the college, admire and love him. Perhaps that is the best testimonial any man can have—the love of all his fellows. He has served his college well, and by sheer force of ability has won his high position in the student body of William and Mary. His position in our hearts he won because he is Paul Deering, strong, gentle and true.

## Junior Class

MOTTO: "If studying interferes with loafing, cut out studying."

COLORS: Garnet and Gold

FLOWER: Turnip

YELL

Seventeen, seventeen,  
Garnet and gold,  
Thirteen, thirteen,  
Seniors hold.

### OFFICERS

PAUL N. DEERING	.	.	.	.	.	.	.	President
D. O. RASH	.	.	.	.	.	.	.	Vice-President
J. J. SWECKER	.	.	.	.	.	.	.	Secretary
R. P. WALLACE	.	.	.	.	.	.	.	Treasurer
W. B. TILLEY	.	.	.	.	.	.	.	Historian
W. S. BRENT	.	.	.	.	.	.	.	Chaplain

### STUDENT COUNCIL

Hedrick                  Wallace                  Booth

### MEMBERS

B. W. Booth	J. W. Hedrick	W. B. Tilley
W. S. Brent	W. L. McCormick	F. B. Tolson
P. N. Deering	Raymond Maffette	J. T. Waddill
D. L. Gillions	J. J. Swecker	R. P. Wallace
	D. O. Rash	







## GEORGE WYTHE BOOTH

*Sigma Phi Epsilon*

George, the smiling Bean Brummel of our class, carts about a shapely head chock full of hard common sense. Never have we seen him when he was not as immaculate as a dancing master. We want to know what George did with his monogram—watch him blush.



## WILLIAM SEYMOUR BRENT

*Pi Kappa Alpha*

The laziest of humans, the wittiest of mortals, and the noblest of friends—that's Bill. If you want to see that golden smile, offer him a cigar or tell him a joke. Duck quick, Bill, a girl is looking straight at this page!

## DAVID GILLIONS

*Phiomic*

Dave, our Northern Neck farmer, is so genial and so cherry that we are coming to look for his smiling face every day, and his fund of common sense is the envy of the dues. He's from the land of oysters and boats, and proud of it. You can't down Dave!



## RAYMOND MAFFETTE

*Phiomic*

Behold the only man who has ever been known to ask sensible questions in the Education Classroom. A steady influence to the Ewell dues, and ex-teacher of Virginia's young, he is an enigma to the faculty, who usually call him "Majet," in an effort to pronounce his sonorous name.





WALTER LEE McCORMICK  
*Southwest Club*

Tall, thin, witty, here he comes across the campus, cane in hand, hat pulled down over his eyes, and smiling genially at the world in general. Then you may know that something is in the wind. Often mistaken for his better looking namesake.

JOHN WILMER HEDRICK  
*Southwest Club*

The tallest of our tribe greets you; looks down upon you from his six foot four. He is another of our mountain lads, and as solid as the hills of his native county. An athlete of distinction and a "curler" of parts.



DAVID ORGAIN RASH  
*Philomathean*

Rash, but not to excess, sunny-tempered and optimistic, a gentleman and above all, a man. On every Sunday he dresses up in his best, combs his hair carefully, and sets out downtown—to mail a letter to the bright-eyed lass he left behind him.



JENNINGS JUDY SWECKER  
*Phoenix*

This is Judy, the joy of the class and the terror of the dees. They all tremble at his nasal invitation to "Let's buck a dee, fellers!" But for all his ferocious air, his heart is kind and his only fault is that he rises early every morning and wakes the unfortunate with song. For which he has been cursed.



WILLIAM BENJAMIN TILLEY

*Kappa Alpha*

"Bill" is what we call this pleasant-faced lad for short. Shows the faculty what amazing marks he can wring from them while taking an active interest in campus life. Nor do the young ladies of the town call this accomplished youth by his last name.



JAMES THOMAS WADDILL

*Sigma Phi Epsilon*

Our "Tommy" greets you! The most indifferent of the class; a lover of ease—see the pun—; and a procrastinator who comes into action at the last minute. Quiet, reserved and respected. He made quite a reputation as an orator in Public Speaking.

FRANK BOWIE TOLSON

*Pi Kappa Alpha*

A perfect edition of the Sphinx, faultless in appearance, and steady in his classes. A hard boy to know, but one worth knowing. If you want to see Jack blush, ask him what club he was President of last year. And make him tell you.



ROBERT PERRY WALLACE

Captain Football Team, 1915-'16, Re-elected

He used to carry the ball through.

With six men on his back.

This is Robbie, "Hip" or "Fats"; he answers to them one and all, although his lady friends protest that it is an outrage. Robbie, king of the Annex, is feared by the dues as a dreaded executioner, by the faculty as a curler, and by other colleges as an athlete of ability. Modest, and good natured, few are more popular.



## Junior Class History

Do not fear, gentle reader; do not turn away in horror! We positively refused to allow our history to be written in doggerel and you have nothing further to fear. But you may turn over, if you do not wish to hear of the miraculous adventures of this class of thirteen unusual humans.

We are thirteen, and we have no fear of what the future will hold in store for us; only wait until we get our swing at a degree next year. Let me start off my story with "Bill" the auburn-haired lad from Heathsville; Bill has a pessimistic habit of announcing positively that he will never return to this place again, only to be the first to arrive in the fall. He is coming back next year principally to take an advanced course in Physics. From the same land as Bill is Dave, who got into our history by missing the monthly boat Christmas and catching up on his work. If one of our class drops out, it will be George who we expect to see married in a few months. His bridemaids will be Raymond Maffette, Mac, Shorty Hedrick, and Rash, who are already preparing their clothes. George didn't tell us this, but he did tell Paul, who told it confidentially to "Hip," who mentioned it to Tilley, who in turn confided it to Judy, who is responsible for the report. But George is one of the old guard, ranking with Maffette, Hedrick, Gillians, and Brent, and perhaps we will let him off.

The ducs will tell you the history of Judy, and Robbie, and we tremble for our mates if their future approaches the hopes of these enraged young freshmen.

Now we will start to brag about our accomplishments. When such overpowering lady-killers as Mac, Maffette, Bill Brent, and Dave Gillians array themselves in their Sunday peg-leg pants and set out, we consider that our social welfare is in capable and zealous hands. Jack Tolson and Tommy



# COLONIAL ECHO

Waddill are our leading conversationalists, while Robbie is our athlete par excellence. Ask him what the Farnville girls said when he played against Hampden-Sidney and Thurman up there in '13.

We are such a good class, so representative, and composed of so many individuals of distinction, that we would like immensely to ramble on up and down three more pages, but the Editor-in-Chief is getting fearfully peevish, and he insists that he can't turn over but two pages to my insane ravings, so I'll spite him by stopping short at this critical point in the history of the Junior Class.

## COLLEGE SPIRIT



## College Echo Election

Most popular man.....	Newton, Zehmer, Ferguson
Greatest nuisance .....	Deane, Dalhousie, Gilliam
Greenest man .....	H. Parker, Overton, Womack
Tobacco bum .....	Wiley, Brent, Copeland
Eccentric man .....	Combs, Maffette, Hutcheson
"Calico" sport .....	R. B. James, Nottingham, H. Parker
Loafer .....	"Buddie" Green, H. Walker, Moncure
"Curler" .....	Woods, W. Ferguson, Seekford
Freshest "Duc" .....	Forehand, Bristow, Lassiter
Ugliest man .....	E. R. James, Forehand, Farmer
Best orator .....	G. Ferguson, Deering, French
Best athlete .....	Gayle, Stryker, Wallace
Most handsome man .....	Farmer, Newton, Geddy
Most awkward man .....	K. Early, Forehand, Sisson
Best baseball player .....	Garnett, Zehmer, Newton
Best prose writer .....	J. Stephens, Harris, Ferguson.
Lady hater .....	K. Early, Brent, Maffette.
Slowest man .....	"Giraffe" Stephens, Simms, Hutcheson
All-around College man .....	Newton, Zehmer, Wallace
Best basketball player .....	Gayle, Zion, Jones
Business man .....	Presson, Woods, Zion
Grind .....	Seekford, Maffette, W. Ferguson
"Dill-picker" .....	Seekford, Rocklin, Hellin
"Bull-slinger" .....	Hellin, Deane, Presson
"It" .....	Hellin, Hall, Dalhousie





COLONIAL ECHO  
1 - 9 - 1 - 6



# Sophomores





SOPHOMORE CLASS







# COLONIAL ECHO



## Sophomore Class

### OFFICERS

A. L. MADDON	President
B. O. ROCKLIN	Vice-President
J. P. ENGLE	Secretary
H. H. SIMMS	Treasurer
W. W. FARMER	Chaplin

METTO: To the Sophomore belongs the homage—consequently we exact it.

FLOWER: Asparagus.

### YELL:

Rickety, rickety russ!  
 We're not supposed to cuss,  
 But darn it to h——, we feel so swell,  
 We really, really must!

### MEMBERS

R. A. Brown	Basking Ridge, N. J.
J. R. Byrd	Holland, Va.
H. G. Chandler	Richmond, Va.
C. L. Charlton	Cambria, Va.
H. V. Clary	Disputanta, Va.
R. A. Clary	Disputanta, Va.
E. L. Connelley	Millenbeck, Va.
R. W. Copeland	Hampton, Va.
C. D. Crymes	Opie, Va.
S. N. Dallouse	Waynesboro, Va.
D. C. Deane	Blackstone, Va.
H. B. Derieux	Tappahannock, Va.
F. P. Early	Bluefield, W. Va.
J. N. Early	Hillsville, Va.
J. K. Early	Hillsville, Va.
S. W. Eason	Norfolk, Va.
H. H. Edwards	Palls, Va.
W. W. Farmer	Virginia, Va.
G. L. Ferguson	Williamsburg, Va.
T. D. Foster	Millenbeck, Va.
V. M. Geddy	Williamsburg, Va.
R. B. Gilliam	Toga, Va.





# COLONIAL ECHO

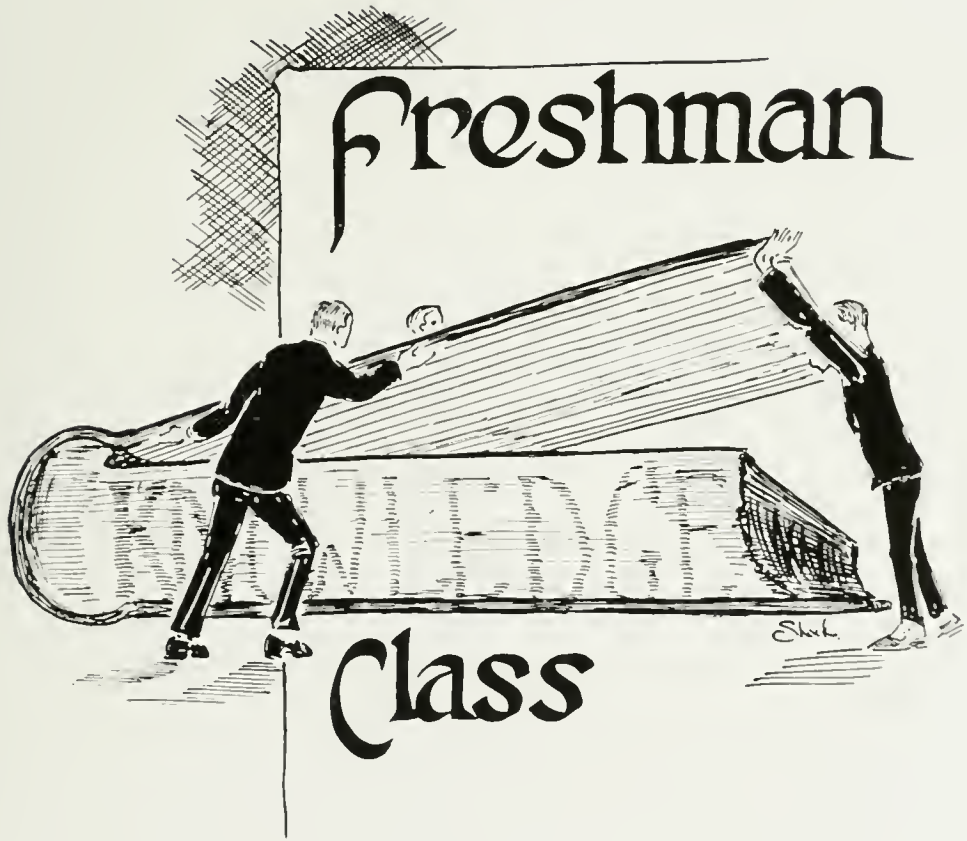


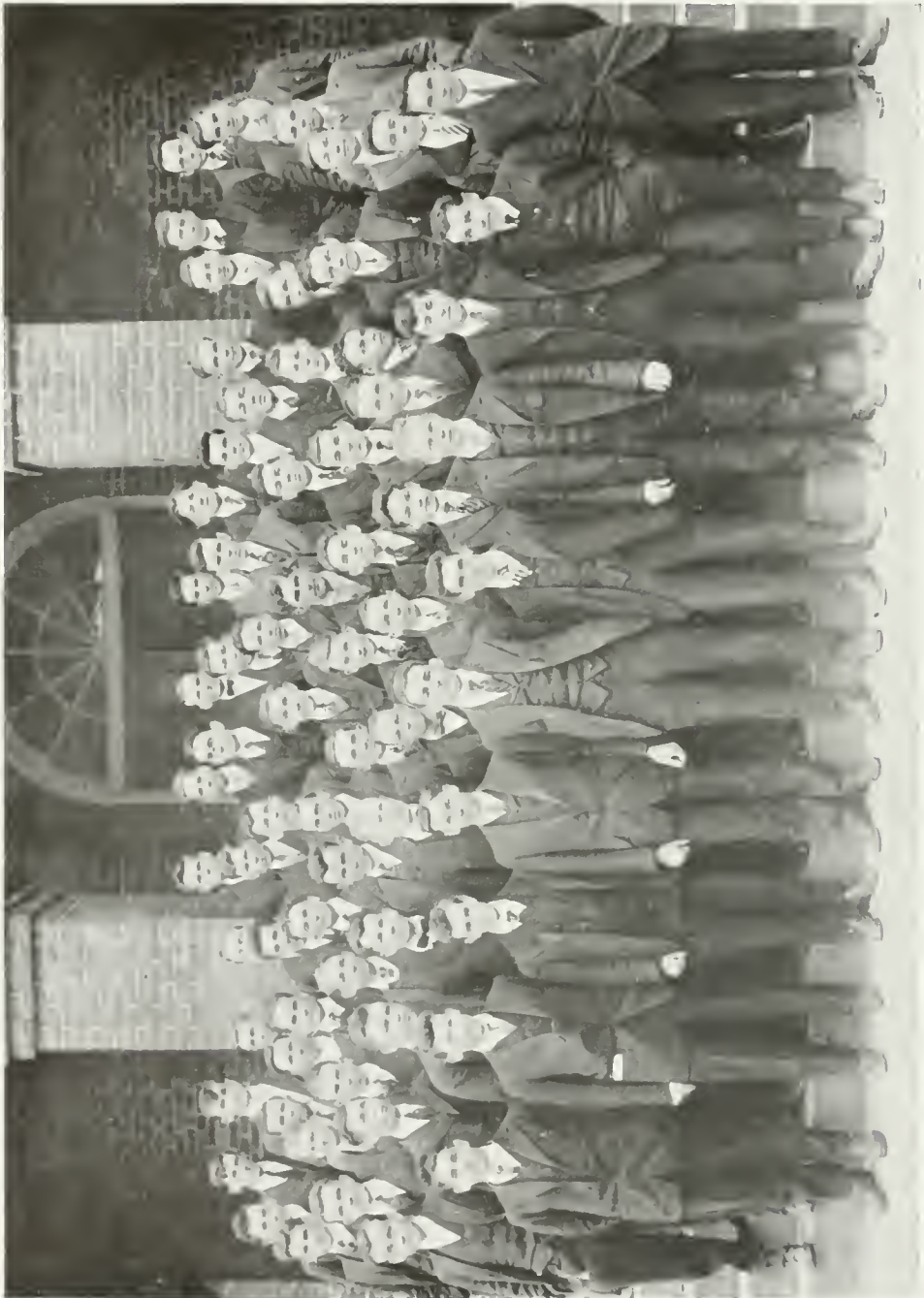
A. H. Goslee . . . . .	Urbanna, Va.
J. P. Ingle . . . . .	Flatwoods, Va.
B. R. James . . . . .	Bedford City, Va.
F. F. Jenkins . . . . .	Carrollville, Va.
F. F. Joyner . . . . .	Capron, Va.
D. P. Lohr . . . . .	Brightwood, Va.
A. L. Maddox . . . . .	Naruna, Va.
C. L. Major . . . . .	Stormont, Va.
A. J. Mapp . . . . .	Belle Haven, Va.
H. L. Mitchell . . . . .	Whitwell, Va.
H. T. Moncre . . . . .	Williamsburg, Va.
A. D. Parker . . . . .	Portsmouth, Va.
T. G. Pullen . . . . .	Grafton, Va.
I. W. Robertson . . . . .	Callaway, Va.
A. P. S. Robinson . . . . .	Syron, Va.
B. O. Rocklin . . . . .	Portsmouth, Va.
B. H. Seekford . . . . .	Luray, Va.
F. M. Garnett . . . . .	Buckingham, Va.
H. H. Simms . . . . .	Lagore, Va.
G. P. Green . . . . .	Surry, Va.
S. B. Hall . . . . .	Hickory, Va.
J. P. Hammil . . . . .	Morattico, Va.
C. R. Hellin . . . . .	Broad Run, Va.
H. S. Holmes . . . . .	Middleburg, Va.
H. M. Stryker . . . . .	Williamsburg, Va.
W. C. West . . . . .	Vasta, Va.
G. P. Wiley . . . . .	Portsmouth, Va.
E. E. Stephens . . . . .	Wicomico Church, Va.

### EDITOR'S NOTE

“May I print a kiss on your lips?” I said,  
 And she nodded a sweet permission.  
 So we went to press and I rather guess  
 We printed a full edition.







THE FRESHMAN CLASS





## The Freshman Class

MOTTO: Only the patient can survive.

FLOWER: Radish.

DRINK: Whurley.

PASTIME: Dodging the Sophs.

### OFFICERS

C. E. WILLIAMS	President
W. M. TUCK	Vice-President
R. C. TAYLOR	Secretary
W. D. GARLAND	Historian
H. C. PARKER	Treasurer

### MEMBERS

E. L. Adams	Eclipse, Va.
R. A. BABB	Sebrell, Va.
J. B. Bentley	Hampton, Va.
R. Berry	Criglersville, Va.
L. H. Billups	Venter, Va.
A. H. Blakemore	Senora, Va.
R. P. Bowles	Sabat, Va.
W. Brayshaw	Princeton, W. Va.
O. A. Bristow	Saluda, Va.
J. A. Brooks	Williamsburg, Va.
T. H. Campbell	Tazewell, Va.
F. A. Carpenter	Madison, Va.
W. H. Cheatham	Wirtz, Va.
H. Clary	Coeburn, Va.
E. L. Connollee	Millenleek, Va.
W. H. Connelly	Lawrenceville, Va.
J. B. Cook	La Crosse, Va.
W. H. Cook	La Crosse, Va.
G. B. Cook	Gloucester, Va.
G. O. Cunningham	Hampton, Va.
J. C. Dugger	Broadax, Va.
R. H. Edwards	Palls, Va.
J. S. Eley	Whaleysville, Va.
L. P. Elmore	Alberta, Va.
W. W. Farmer	Virgilina, Va.
W. W. Forehand	Deep Creek, Va.
T. D. Foster	Bertrand, Va.
O. W. French	Lot, Va.
H. E. Fulcher	Sandridge, Va.
L. E. Fuller	Council, Va.
W. D. Garland	Warsaw, Va.
F. C. Graves	Fredericksburg, Va.
G. P. Green	Surry, Va.
A. C. Hagerman	Sunny Side, Va.





# COLONIAL ECHO



J. L. Harvey	Long Island, Va.
R. L. Henley	Williamsburg, Va.
W. Hillard	Deep Creek, Va.
C. J. Hogge	Wicomico, Va.
R. J. Johnson	Gilberton, Va.
W. W. Johnson	Glimerton, Va.
A. D. Joyner	Courtland, Va.
A. L. Lassiter	Port Norfolk, Va.
W. S. Lee	Hayes Store, Va.
M. M. Lewis	Fredericksburg, Va.
D. P. Lohr	Brightwood, Va.
S. G. Miller	Roseland, Va.
H. G. Milteer	Hobson, Va.
W. R. Morris	Potomac Mills, Va.
D. O. Murray	Portsmouth, Va.
W. E. Neblett	Lunenburg, Va.
H. S. Northington	La Crosse, Va.
G. Q. Nottingham	Eastville, Va.
J. J. Overton	Darlington Heights, Va.
P. H. Owens	Wylliesburg, Va.
H. C. Parker	Mount Landing, Va.
E. L. Porter	Boykin, Va.
T. G. Prince	Dembrooke, Va.
R. C. Rives	McKenney, Va.
J. S. Robinson	Skyron, Va.
J. B. Rowe	Emmerton, Va.
F. Settle	Emmerton, Va.
R. Sisson	Emmerton, Va.
H. F. Smith	Dreysville, Va.
G. G. Sommers	Somerset, Va.
E. D. Spencer	Williamsburg, Va.
E. V. P. Stowitts	Palatine Bridge, Penn.
L. P. Sutherlin	Sutherlin, Va.
R. C. Taylor	Newport News, Va.
E. M. Tennis	Hampton, Va.
F. I. Thrift	Kinsale, Va.
W. M. Tuck	Virgilina, Va.
T. R. Tucker	Dewitt, Va.
H. M. Walker	Heathsville, Va.
J. G. Warburton	Williamsburg, Va.
J. T. Walker	Stevensville, Va.
N. J. Webb	McClellan, Va.
D. M. Whitacre	Fairfax, Va.
S. R. Weisel	Norfolk, Va.
C. E. Williams	Birmingham, Ill.
M. H. Williams	Irvington, Va.
J. F. Wilson	sle of Wright, Va.
M. Womack	Farmville, Va.





## Senior Normal Class

### OFFICERS

J. P. INGLE	President
H. H. SIMMS	Vice-President
F. T. JOYNER	Secretary
A. P. S. ROBINSON	Treasurer

Motto: Let the wise instruct the ignorant.

Flower: Violet.

### YELL:

Teachers to be, teachers to be,  
Normal Seniors all are we!

### MEMBERS

W. W. Farmer	I. W. Robertson
G. L. Ferguson	D. P. Lohr
E. L. Connollee	B. H. Seckford
C. L. Charlton	T. M. Pullen
B. O. Rocklin	S. B. Hall
T. D. Foster	J. N. Early
R. R. Gilliam	C. L. Major
H. H. Edwards	H. V. Clary

P. N. Derring



## Drawing Two

*Interior of a student's room: clothes, books, papers, and pictures are strewn indiscriminately around upon the floor and table. Rumpbed bed to right, door at left. Table littered with books and papers in the center.*

### SCENE I.

Curtain coming up discloses Bayle, coatless and collarless, working frenziedly at the table. His hair is disheveled and he sweats feelingly at frequent intervals. Freshman enters noisily, flings his book on the bed, and follows it. Bayle pauses for an instant to glare at him.

FRESHMAN (*gaily*)—Don't you ever smile, sadness?

BAYLE (*peevishly*)—Not on Tuesday or Thursday! (*Sighs deeply and returns to his work.*)

FRESHMAN—But why the funeral air?

BAYLE—Drawing Two. Don't you ever get tired of asking fool questions? (*Sarcastically*) And get your dirty feet off the bed, young man!

FRESHMAN (*lazily*)—Tomorrow's wash day. Never heard before that you were an artist, old lady.

BAYLE (*snorting*)—Nor did I! But what can I do when the faculty says take Drawing Two and my degree says make Drawing Two? Answer me that, freshie!

FRESHMAN (*rolling languidly off the bed*)—You're getting too philosophical for me. Guess I'd better ambulate down town: I'm out of coffin tacks anyway.

BAYLE—See here, freshie, know anything about art?

FRESHMAN (*complacently*)—Sure!

BAYLE (*hands him drawing he has been working on*)—Cast your peepers over this, young prodigy, and see how you like it.

FRESHMAN (*surveying the picture with a critical air*)—Perfectly executed, old chap! But just what were you trying to—er—draw?

BAYLE (*secretly*)—Don't dare get funny, freshie. Can't you see that it is a drawing of scrimmage?

FRESHMAN—Can't say I do. Looks like a mud cake to me.

BAYLE (*cagerly*)—It's an end run, young one. Old Baker tries to be an athletic fiend and he is always slapping that kind of work on us.

FRESHMAN (*sadly*)—But it's not an end run? It's a splash of paint, a blurred—







# COLONIAL ECHO



BAYLE—Hold you tongue, young man! I know I'm a stick in Drawing, but you shan't rub it in!

FRESHMAN (*soothingly*)—Keep your shirt on, old lady. Merely friendly advise, nothing more. Now I'll be running on down town before I have to spank you.

BAYLE—Going by the Arts Building?

FRESHMAN—I can.

BAYLE (*eagerly*)—Won't you sneak that scrimmage thing along and sneak it up on old Baker's desk. I've got my name on the back of it, and you'll save me a walk. I'm busy as a minister today.

FRESHMAN (*tucking the drawing carelessly under his arm and taking up his hat*)—Trust me to get it up there, old lady. I never fail you, do I?

BAYLE—Don't force me to get sarcastic. But don't forget it: it ought to have been in six days ago and old Baker, drot his cross-eyed time, has been getting mean about it.

FRESHMAN—I'll do the dirty work, never fear. (*Exit, whistling.*)

BAYLE (*sighs. Then he clears his table of drawing apparatus with a single angry sweep and takes out writing paper*)—With that off my mind, I'll grind out a few heart throbs to the damsels. Hope that ass don't forget to slip my drawing in old Baker's desk.

## SCENE II.

*A deserted classroom in the Arts Building. Freshman enters softly and slips up to the instructor's desk.*

FRESHMAN (*running idly through a neat stack of drawings*)—Whew! what's old Baker got these things piled up here for? I'll just slip Bayle's effort in the middle of the pile and he'll think it's been there all the time. (*Slips Bayle's drawing carefully into the center of the pile.*) What kind of rotten drawings are these anyway? But hello! here comes someone! (*Makes hastily exit through side door.*)

*(Old Baker enters hurriedly and goes directly to his desk.)*

BAKER (*to himself*)—All here, just as I left them. Today's the last day of the contest and I'll have to hustle to get them off on the noon train.

*He seizes the pile of drawings, scraps them up hastily, directs the package to the "New Art Contest, N. Y.," puts it under his arm and makes his exit.*

## SCENE III.

*Interior of Baylor's room in even greater disorder.*

*The curtain rises upon Bayle sprawled on his bed, fast asleep. A full-dress suit is scattered carelessly over the floor.*





# COLONIAL ECHO



*The freshman enters noisily, knocking over a chair.*

FRESHMAN—Get up, old lady! It's twelve o'clock now. One more ball and you'll degenerate into a Rip Van Winkle.

BAYLE (*sleepily*)—Get out of here, you pest! I didn't turn in until four and—

FRESHMAN—"Early to bed and early to rise"—But here's a couple of letters for you, old top.

BAYLE (*sitting up in bed and rubbing his eyes*)—Read them to me, freshie. Where are they from?

FRESHMAN (*squinting at one with a puzzled air. Reads*)—"Return in ten days to the New Art Contest, N. Y." What's the idea?

BAYLE—Haven't any idea. Sure it's for me?

FRESHMAN—Got your name on it.

BAYLE (*peevishly*)—Well, read it to me, freshie. Don't stand there yapping at me all day.

FRESHMAN (*reading*)—"Mr. Bayle, Dear Sir: It is my pleasant duty to inform you that your excellent impressionistic painting, "The Scrimmage," has won first honors in our recent contest. The first prize, a priceless painting in the same style, by Sir Worsthan Foolishe, has been shipped and should reach you in a few days.

(Signed) D. F. Prejudice, Sec'y."

BAYLE (*sternly*)—Freshman, is this one of your infernal jokes? Don't get gay with me, young man, just because the session is over.

FRESHMAN (*earnestly*)—On my honor, I don't know a thing about it. I put your drawing on old Baker's desk last month and that is all I know.

BAYLE (*sarcastically*)—What the deuce do I want with an impressionistic painting? Nice mess you got me in! But read the other letter. Where's it from?

FRESHMAN—From the Registrar's office. (*Tears open letter and reads it.*)

BAYLE (*quickly*)—What's wrong, freshie?

FRESHMAN (*weakly*)—Everything. It's from the faculty; they beg to inform you—sad duty, etc.—that you have flunked Drawing Two!

*Curtain.*



### *Requiem*

*A "due" by the name of Billy,  
'at's all we'll ever know  
Of the freshman's name, I reckon,  
And we're kind o' glad its so.*





ACTIVITIES





H. H. SIMMS, '18,  
Debating Team



R. L. COMBS, '16,  
Debating Team



H. L. HARRIS, '15,

Winner of the 1915 State Oratorical Contest. This honor has been twice won in the past four years by a William and Mary contestant.

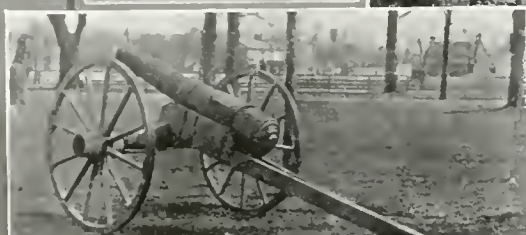


F. D. G. RUBBLE, '16,  
Debating Team

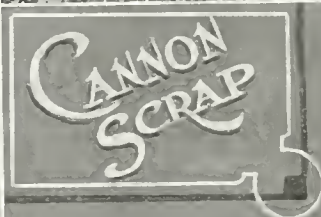
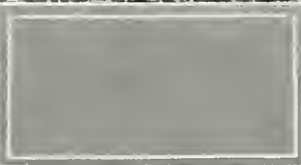


G. L. FERGUSON, '18,  
Debating Team





SPOTTSWOOD CANNON



## The Cannon Scrap

Rules and Regulations adopted by representatives from Freshman and Sophomore Classes:

1. The scrap shall take place annually on Cary Field on the first Saturday after classes begin.
2. The Spottswood Cannon shall be defended by the Sophomores.
3. The Freshman shall endeavor to capture and take the Cannon from the field.
4. The Freshman shall be allowed 30 minutes to complete the task.
5. The use of soap, tar and grease is prohibited.
6. A contestant shall be disqualified for any unnecessary roughness, for losing temper, or clothes.
7. The judges shall be Profs. Clark, Keeble, and Calhoun.
8. The victors shall be presented with a banner, especially designed for the occasion.

The first Cannon Scrap was held on September 25, 1915, and resulted in a victory for the Freshman, who achieved their purpose after a desperate defense of the prize by the Sophomore. But the Freshman hopelessly out-classed their opponents in numbers and size, and although the Cannon had been placed in the farthest corner of the field, they dragged it out from its defenders and straight across the field to the gate. There, the Sophomores were re-inforced and for a moment it seemed that the cannon would be checked. But the Freshman, by sheer numbers, cleared the wheels of the grasping hands, and rolled their prize with a mighty yell out of the gate and into the road, in only twenty minutes from the commencement of hostilities.

Prof. Keeble presented the Banner of Victory to the winners who dragged their trophy down the street amid wild rejoicing. Their victory was well earned, in spite of their great number, for the gun had been carefully placed in a protected corner, and they finished well within the time limit. May they retain it next year when it will be their turn to defend it!



**THE  
 STUDENT  
 COUNCIL**

J. W. WHELAN, Junior  
 J. M. PRESSON, Senior  
 G. W. BOOTH, Junior  
 G. S. SCHWENK, Senior  
 R. P. WALLACE, Senior  
 W. H. ...  
 W. ...  
 F. P. ...  
 W. ...  
 W. ...  
 W. ...







# COLONIAL ECHO

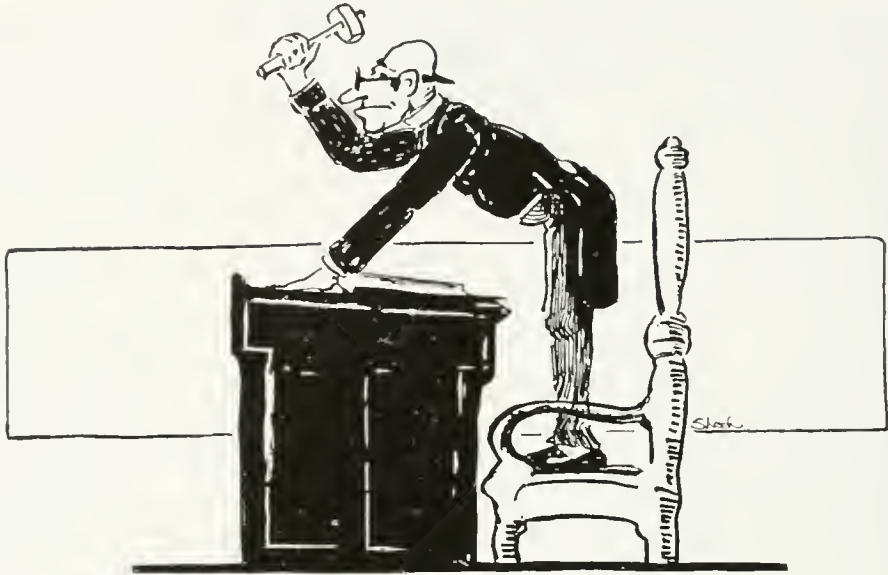


## Y. M. C. A. Cabinet

### OFFICERS

P. N. DERRING	President
JOHN BENTLEY	Vice-President
F. T. JOYNER	Treasurer
WILLIAM BRAYSHAW	Secretary
D. O. RASH	Committee on Bible Study
C. E. WILLIAMS	Committee on Missions
V. M. GEDDY	Committee on Social Service
I. W. ROBERTSON	Committee on Membership
H. G. CHANDLER	Committee on Delegations
C. L. CHARLTON	Committee on Music





## Order in Court!

And so the court came to order.

From his lofty seat, the Judge of the Supreme Court, convened yearly to try the more flagrant offenses against the Commonwealth of William and Mary, looked down upon the faces before him, and frowned angrily. Whereat, little chills went chasing up and down the spines of the dues here trapped by the courtsey of the older classmen. Silence.

"The Lord High Sheriff will bring forward the prisoner!"

He was the meekest of the meek as he came forward slowly, supported by the gigantic Sheriff and his corpulent deputy, and his last ounce of self-possession left him as he looked up and found himself in the presence of the Court. At first he tried to look unconcerned, at which the Judge stared at him stonily; changed his mind and decided to look tolerantly amused, at which the Attorney for the Prosecution coughed angrily; so he shifted to his other foot and looked miserable, at which the jury nodded approvingly. The sonorous voice of the Clerk, reading the indictment, aroused him with a start:

"—for the unheard of crime against the College of William and Mary





of appearing on the campus wearing purple socks, in the presence of responsible witnesses!"

He concluded with a flourish, and a groan of horror ran through the crowded room at the very enormity of the crime, for which the prisoner was about to be tried. He was trying feebly to explain that it was all a mistake, when he was seized and dragged rudely up to be sworn. After he had sworn to tell the whole truth and nothing but the truth, so help him Billiken, he kissed a green Geometry with a resounding smack, and tottered back to his chair.

Weakly he crossed a leg.

"Hold the prisoner!" roared the Judge. "Take his life if necessary," he added fiercely, as a deputy sprang to the prisoner's side.

And then the Clerk called the witnesses for the prosecution.

They came forward smiling, perjury written all over their faces, and the heart of the prisoner sank within him at the murmur of approval that ran through the room—the Clerk had done his work well, the witnesses, one and all, enjoyed wide reputations for their carelessness with the truth.

And they added many cubits to their fame that night. One after the other, they were sworn and took the stand to assert positively that they knew the prisoner well and had, they blushed to admit it, seen him commit the offense with which he was charged. And the heart of the prisoner was quite in his shoes by the time they were done.

"The prisoner will take the stand in his own defense," was the arbitrary announcement of the Court, when the perjuring gentlemen were through.

"Your name," snarled the Prosecuting Attorney, as soon as the luckless defendant was uncomfortably settled in the witness chair.

"Wishi Nevercame," was the reply, scarcely audible.

"Where from, Mr. Nevercame?"

"Toano, sir, I——" A moan of horror, of unbelief swept over the spectators; the jury looked astounded; and the Judge turned pale.

"Where?" asked the attorney for the defense innocently. He has been trying to bum a cigarette, to the detriment of his client's case, or he would never have been so foolish.

The prisoner wet his lips bravely; something was wrong, perhaps they had not understood him. "Toano," he explained patiently. "You know I am a cousin of Nat——"

He got no further. A concerted roar of dismay, of consternation stopped him abruptly. The prosecuting attorney smiled broadly; the jury fixed upon the witness a look of dire destruction, and the attorney for the defense, as soon as he could make himself heard, asked to be relieved.

"Your request **MUST** be granted," said the Judge slowly, while a hundred



heads nodded solemn approval. "Is there any rising young legal talent in the court room who wishes to take this desperate case. I appeal to your sympathies; the prisoner at the bar has unwittingly convicted himself of a most serious charge and is in great danger of losing his head. Will no one volunteer?"

Perfect silence in the room.

"Then," continued the Judge, "there is nothing to do but to leave the fate of the prisoner in the hands of the jury. Gentlemen of the jury," turning toward that prejudiced-looking body, "heinous as is the crime with which the prisoner is charged, and which has been fully proven by the testimony of that entirely veracious group of witnesses for the prosecution, we must take into consideration the astonishing admission of the prisoner in this very court, while practically in the shadow of the gallows, and the abominable effrontery which he has exhibited at all times of the trial. His superhuman efforts to escape from the custody of the court officers are not to be overlooked, and the fact that he dared to take the stand in his own defense is, in the opinion of the Court, a mark of the hardened criminal. The Court in his instructions to the jury always strives to be perfectly unprejudiced, and I flatter myself that my instructions in no way assail the innocence of the prisoner. In closing, I would like to suggest that in considering the case, you disregard any evidence in favor of the accused as tending to interfere with a true conception of his guilt. The jury will retire."

The jury retired, rather hastily, to a corner of the room, and the favour of their debate would be judged from the remarks of "Death, certainly!" "A cousin, you know!" "Guilty!"

In a few moments they filed solemnly back to their seats and met the entreating looks of the prisoner with cold scorn. The foreman stood up.

"After due deliberation," he stated, with provoking slowness, "the jury stood six to six upon the question of putting the prisoner to death or forcing him to take Physics III—an extreme punishment from which they refuse to budge. So, it was compromised, and he is fined the sum of 23c."

The prisoner's face brightened.

"Plus ten cents for contempt of Court," said the Judge as the foreman sat down. "He showed his relief!"

The Lord High Sheriff approached the prisoner to escort him to the back of the room where a scowling deputy waited to collect the fine.

"Order in Court!" roared the Judge. "The Clerk will please read the next case on our docket."





# COLONIAL ECHO



# PUBLICATIONS





THE FLAT HAT STAFF



**THE FLAT HAT**

FOUNDED OCTOBER 2, 1914

EDITORS

MANAGER

ASSOCIATE EDITORS

ADVERTISING

PRINTING

PUBLISHED

BY

AT

NO. 100

RICHMOND, VA.

TERMS

PER ANNUM

IN ADVANCE

BY

THE

MANAGER

AT

NO. 100

RICHMOND, VA.

TERMS

PER ANNUM

IN ADVANCE

BY

THE

MANAGER

AT

NO. 100

RICHMOND, VA.

TERMS

PER ANNUM

IN ADVANCE

BY

THE

MANAGER

AT

NO. 100

RICHMOND, VA.

TERMS

PER ANNUM

IN ADVANCE

BY

THE

Rate of which...

Unheartily...

A time...

many year...

...

...

...

...

...

...

...

...

...

...

...

...

...

...

...

...

...

...

...

...

...

...

...

...

...

...

...

...

...

...

...

...

...

...

...

...

...

...

...

...

...

...

...

...

...

...

...

...

...

...

...

...

...

...

...

...

...

...

...

...

...

...

...

...

...

...

...

...

...

...

...

...

...

...

...

...

...

...

...

...

...

...



**W.C. FERGUSON**  
EDITOR-IN-CHIEF



**R.M. NEWTON**  
BUSINESS MANAGER

C. Lumsden & Son

DISPLAY  
Newport News, Va.

HIBALD CARY  
NATIONAL BANK  
Richmond, Virginia

W.C. Ferguson Drug Company  
Retail STORE

College of Arts, Sciences, Education

COLLEGE OF  
AND MARY  
SBURG, VA.


equipment, and strong...  
the United States...  
with an easy distance of...  
It offers...

es in Education for the preparation of...  
and students for the...  
may be secured through the...  
independently students preparing to teach...  
FOR CATALOGUE, Registrar

**THE WEEKLY PAER**



The William and Mary  
Literary Magazine



WM. M. GRIMSLEY  
BUSINESS MANAGER

W. C. FERGUSON  
ASSOCIATE EDITOR

Vol. XXIII No. 3

WM. D. HARRIS  
EDITOR-IN-CHIEF

R. L. COMBS  
ASSOCIATE EDITOR

C. A. SCOTT  
ASSOCIATE EDITOR

I. W. ROBERTSON  
ASST. BUS. MGR.







# COLONIAL ECHO



## LITERARY SOCIETIES





## Phoenix Literary Society

### OFFICERS

	President	Vice-President	Secretary
<i>First Term</i> .....	W. M. Grimsley	R. M. Newton	R. Sisson
<i>Second Term</i> .....	F. D. G. Ribble	O. W. French	H. H. Simms
	H. H. Simms		Treasurer

### MEMBERS

C. A. Scott	J. P. Ingle	H. T. Somers
R. A. Babb	D. P. Lohr	J. J. Swecker
R. P. Bowles	A. L. Maddox	H. P. Williams
T. H. Campbell	R. Maffette	G. B. Zehmer
F. A. Carpenter	C. L. Major	H. Chandler
C. L. Charlton	R. M. Newton	L. P. Elmore
S. N. Dalhouse	J. J. Overton	H. Clay
G. B. Cook	F. D. G. Ribble	D. M. Whitacre
W. C. Ferguson	B. O. Rocklin	D. L. Gillians
O. W. French	J. B. Rowe	E. V. Stowitts
L. E. Fuller	H. H. Simms	R. V. C. Rives
W. M. Grimsley	J. W. Stephens	A. P. S. Robinson
Hagerman	R. Sisson	W. H. Conmollee





## Philomathean Literary Society

### OFFICERS

	President	Vice-President	Secretary
<i>First Term</i> .....	P. N. Deering	I. W. Robertson	G. Ferguson
<i>Second Term</i> .....	I. W. Robertson	F. F. Jenkins	J. Bentley
	M. M. Hillard, F. T. Joyner	Sergeant-at-Arms	
	B. H. Seekford	Treasurer	
	H. V. Clary	Chaplain	

### MEMBERS

J. B. Bentley	M. M. Hillard	N. J. Webb
G. W. Booth	W. W. Johnson	P. N. Derring
J. L. Eley	R. J. Johnson	C. R. Hedlin
J. R. Byrd	H. H. Jones	F. F. Jenkins
H. V. Clary	F. T. Joyner	T. D. Foster
R. A. Clary	H. L. Mitchell	W. M. Tuck
W. W. Farmer	R. H. Owens	T. G. Pullen
G. L. Ferguson	I. W. Robertson	W. E. Zion
W. D. Harris	D. O. Rash	S. W. Eason
	B. H. Seekford	R. L. Combs
	F. P. Early	





# COLONIAL ECHO

1 - 9 - 1 - 6



## The Debate Council



W. C. FERGUSON  
PHOENIX



W. D. HARRIS  
PHILADELPHIA



DR. J. S. WILSON  
ACADEMY



W. H. HORDE  
LEONARD



G. A. ZENKER  
PHOENIX



G. L. FERGUSON  
PHILADELPHIA



## Song of the Syrian Priest

Here on the desert sands I kneel,  
Under the stars,  
Open the singing gates, O love, reveal  
Thy templed panopliers.

See! as the moon-washed sands are clean,  
Clean is my heart,  
Long have I served thee, Istar, though unseen,  
Grown wise in thy holy art.

Here in the silent night I kneel,  
Facing the sky,  
Istar, orient goddess of Love, reveal  
Thy presence, lest I die!

MARTIN FEINSTEIN.





FACULTY MANNERISMS



JOKES



GRINDS



STOCK



*'Twas the Night Before Exams—*

The Night After

Flunked! Flunked! Flunked!  
On these darned old 'exams again,  
And I would that my tongue could utter,  
My thoughts of direst pain,

Alas! for the weary hours  
I spent with my books one day!  
Alas! for the cherished hopes  
That go melting fast away!

And the stately seniors go on  
To their final great reward  
But oh! for the sight of a cherished A,  
The thought of a chance that is gone,

Flunked! Flunked! Flunked!  
Off this campus soon I'll be,  
For a desperate cram didn't pass the 'exam,  
On Greek Philosophy,







## College Definitions

**GRIND**—A student who comes to college for an education, who deigns to look at a book occasionally, and who burns the midnight oil over a poker game.

**BOOZE-ARTIST**—An unfortunate who having once "celebrated" not wisely but with spirit, becomes by the courtesy of his friends, a hopeless drunkard and a desperate jailbird.

**DILL-PICKER**—A student who regards a professor as a human being; who is not above speaking to them on the street; and who does not always define them as hardened criminals and disguised executioners.

**STUDY-HALL**—A highly-perfected relic of the Inquisition.

**FACULTY**—A class-name for a species belonging to the same general family as umpires and tax-collectors. Are very friendly during most of the year, but during the twice-recurring "Dark Ten Days" are as prompt to assassinate you with a D or E.

**MONTHLY GRADES**—A graded system of guessing.

**HOLIDAY**—A day granted the students to enable them to catch up with their work. Special holidays are usually obtained by yelling, en masse, for a few minutes before the President's door.

**PROBATION**—A dangerous position attained by sleeping through chapel and by being marked absent on classes you don't take. Also the result of "lemonading."

**FLUNK**—The dismal result of being unable to memorize a 800 page book in a single night, or of having original ideas.

**CTRLER**—Usually, a person with a good disposition, who keeps his eyes and book open in class.

**WHURLEY**—A lineal descendant of the hemlock made famous and fashionable by Socrates. An unanalyzed compound served the dormitory dncs, in which can be recognized old friends of the street and field.





# THE BULLETIN BOARD

## ADVERTISEMENTS

DON'T DROWN YOUR SELF in whurley. Use a spoon.

For colds, pains, diseases and death, TRY DRAPER'S UNIVERSAL PILLS Satisfaction guaranteed, or extra ones given free of charge.

QUICK LUNCH Served while you wait MAPP, Proprietor

A BEST SELLER You can't afford to miss it. All book-stores, 13c. CONFESSIONS OF AN HABITUAL LOVER, by Dr. Kent Early Author of "Love," "How to Kiss," "The Ladies."

Have you a little DALHOUSE in your home?

MANICURING Phone 9716 DR. DALHOUSE

PLUMBERS TO THE TRADE TUCK & GEDDY Special prices on Contracts

Let me remove that appendix Painless DR. MUNCASTER Specialist in diseases of the heel

The smartest dressers wear SENIOR COLLARS Gives a zest to the appearance nothing else can produce

QUERY—Is "Mary Garden" or "Attar of Roses" more beneficial to my complexion. "DUC" FULCHER. ANS.—We advise the profuse use of H-2-O.

## QUERY COLUMN

QUERY—Can you give me the college monogram requirements for a mustache. I am in training at the present time.

"BILL" BRENT.

ANS.—we find that a mustache attaining a minimum length of 5 inches entitles its owner to a monogram. However, we note that white and red mustaches are not eligible.

QUERY—I would like to know why Heflin no longer does any visiting in the Annex. We have looked forward with the keenest pleasure to receiving him royally, and we cannot understand why his visit is deferred.

"FATS" WALLACE.

ANS.—We have submitted your query to Mr. Heflin who writes as follows:

"I am fortunate in having arranged so that it is impossible for me to take any more flying trips to the Annex, especially since the capture of my friend, James, and the welcome (?) given him."

QUERY—If I go to Grove on the local train, when can I get back? HUGH PARKER.

ANS.—Mr. Claus tells us that his car is at your service if Miss Burrows is unable to bring you home.

QUERY—If college opens on the 17th, and I leave home on the 12th, will I be on time "DUC" TRIBBLE.

ANS.—It is possible.

## ADVERTISEMENTS

Have You Seen the ZION NOISELESS GUN? Patent Pending Accept no imitations

See what Presson's BABY FOOD did for my boy. He gained ninety pounds in 10 days.

FREE TRIAL for ten days. My PEERLESS, WORTHLESS FOUNTAIN PEN Satisfaction guaranteed or money refunded. D. MURRAY, Chicago, Ill.

I will guarantee to cure your corns in a single night. GUY'S CORN PLASTER Two for five, and free to orphans

Let me collect your garbage TOLSON, THE SANITARY COLLECTOR

Special rates to LOAFERS Pete James' Pressing and Cleaning Shop

Have you that weary listless feeling?

USE RIBBLE'S GOLDEN TONIC Send for free testimonials.

STOP FORGETTING My book on Memory sent postpaid for 2c stamp. DR. TYLER

BOXING! WRESTLING! Learn to defend yourself! D. C. DEANE, Instructor

DANCING LESSONS Do you want to be a graceful dancer? Let me teach you. DANCING LESSONS "Giraffe" Stephens, Instructor





# THE BULLETIN BOARD

## WANTED

WANTED—A first class 3-inch cannon for use on dark nights in a certain unprotected part of the city. Address  
ED. SPENCER

WANTED—One brave Running Heflin of the Brafferton Tribe—dead or alive.  
ANNEX CLUB

WANTED  
MONEY—Business Manager.

WANTED—A deaf, dumb, blind and sickly Study Hall Proctor. No others need apply.  
ACADEMY "DUCS"

WANTED—Mince pie, celery, roast turkey, fruit and venison daily.  
DORMITORY  
GROWLERS

WANTED—Credits. Bring or send to  
MAG LEWIS

WANTED—Someone to love me in Grove. Write to  
HUGH PARKER

WANTED—One single ray of intelligence in Economics Class. Apply to DR. TYLER

WANTED—Quick, an automatic problem-worker for Physies. Bring or send to  
FRANK GARNETT

WANTED—A sure and safe method of charming girls.  
FOREHAND

WANTED—Popularity.  
HEFLIN

WANTED—A strong man to hold Dining Hall door ten minutes before meals. Only six-hundred pounders need apply.

## LOST AND FOUND

LOST—On road to Grove, one gun. Finder please return to  
H. PARKER

LOST—My youthful beauty.  
MAFFETTE

LOST—Strayed or Stolen—a "Duc," worth \$5 to me. When last seen was riding to depot. 13c reward for his capture. Bring or drag to  
"BILL" BRENT

LOST—A ring with initials, T. E. P. Please return to  
WEISEL

FOUND—On C. & O. train, a "college chappie." Shall I kill, maim or destroy it?  
PASSENGER AGENT

LOST—On gridiron in Delaware, one guard. Answers to name of "Polly." Also the game.  
WALLACE, Capt.

FOUND—The secret of beauty. Will share with all.  
GORDON

LOST—In the Cannon Scrap, two buttons, my temper and profanity.  
"MUT" GOSLEE

LOST—In Physies.  
"DUC" ROWE

LOST—On Cary Field, Sep. 25, one cannon. Finders please return to campus.  
SOPHOMORES

## FOR SALE

I WILL SELL AT PUBLIC auction to highest bidder, Williamsburg, and parts of Virginia.  
"RED" HALL, Owner

FOR SALE—Self-feeder. Price, \$10. Apply to  
BEN SEEKFORD

FOR SALE—The mildest of my cravats. Can be used to flag train or worn on dark nights.  
GEORGE ZEHMER

FOR SALE—Joy eliminator.  
HUTCHESON

FOR SALE—Old Shoes. Can fit Cinderella.  
"GIRAFFE" STEPHENS

FOR SALE—Half interest in College Magazine. Small capital required and huge profits. Am retiring from business.  
"IKE" ROBINSON

FOR SALE—A Physics I book at 1-9th purchase price. A good bargain to a quick buyer. Excellent reasons for selling.  
GEORGE WILEY

FOR SALE—Options. Apply to SCHEPMOES.

FOR SALE—Knowledge.  
SUTHERLIN

FOR SALE—One of our numerous mirrors. Cracked, but only used slightly.  
"BOB" NEWTON  
WILSON THORPE

FOR SALE—One decayed bed, sentiment attached, and two fence pickets, forcibly detached. Price, \$23. Apply to  
J. B. C. SPENCER





## “Bones”

### BUT NOT IN LAND

“Champ” Armistead, who had been eagerly making conversation of John Tyler’s diplomacy in securing options during the Dupont boom, ended by remarking, in a tone of admiration:

“Gosh! but John pulled off a big one last night!”

Hedin (with gaping mouth)—“The deuce he did! What was it?”

“Champ”—“His shoe.”

### IS ENGLISH BECOMING CORRUPT?

“Polly” Stryker (yelling from a third-story window)—“Hey, Fats, have you worked them Physics?”

### REASON ENOUGH

Prof. Ferguson, in his Ethics class, had been busily building up a model moral situation, and creating a dense moral atmosphere. He finished thus: “Now, Mr. Zion, what was it that kept you from getting drunk last night?”

Zion (promptly)—“I didn’t have no lieker!”

### WHY THE GIRLS SCREAMED

Hedrick, arrayed in his best, was on his way to Lexington with the football team, having carefully strapped his togs on the outside of his suitcase, for reasons of his own. To the intense delight of the squad, he approached two unknown young ladies, suitcase in hand, hoping by his charms to make an acquaintance. His introduction, accompanied by a company bow, was as follows:

“Hello, girls, I’m only a college “chappie” on my way to play football!”

### THE EFFECT OF HORACE’S PATHOS

Prof. Clark (with tearful pathos)—“Oh! fratres avee—.” A peculiar noise interrupted him. Whereupon the instructor was very much incensed and was reprimanding Stryker for punctuating the pathos when Gayle spoke up in a weak voice:

“It was I, Professor; I cannot tell a lie. I was just swallowing my Adam’s Apple!”

### AN ENTERTAINING CONVERSATION

One afternoon at the depot, “Peanut” Dallhouse recognized a young lady on the train, who was signaling to him, but he was unable to understand, so racing up close to the window, he remarked:

“Can’t hear you, can you see me?”

Dr. Goodwin (in Zoology)—“Mr. Gordon, what are the three classes of foods?”

Gordon—“Grapenuts, beefsteak, and biscuits.”

### POLITICAL SCIENCE IGNORANCE EXPOSED

Dr. Tyler—“Mr. Crymes, which party won?”

“Phi Beta Kappa” Crymes (starting out a profound slumber)—“The Republican Party.”

Dr. Tyler—“Won what?”

Mr. Crymes—“The question.”

Dr. Tyler—“What question?”

Crymes—“The question you were talking about.”

Dr. Tyler (irritated)—“Well, what in the thunder question was it?”

Crymes—“I don’t know, Doctor.”



## Letters of a Lady Killer

Williamsburg Jail,  
February 27, 1916.

My Dearest Angela:

Alas! my heart is broken, my hopes are fled! True to my promise, I last night journeyed to your little city of Grove and after waiting for hours in the dark, it seared my heart to think that you had deceived me. So I sorrowfully took the road to Williamsburg, when I was met by your charming father who had been delayed by a hold-up on the road. In my delight at his warm reception and courtesy, I confided to him my faithful gun. Whereupon, I regret to say, his manner changed, and he laid violent hands upon me, asking why I had written such letters to you, my beloved. I was dragged, fighting bravely, my dear Angela, to a car crowded with ruffians and hurried protesting into Williamsburg. I had a very enjoyable ride, but I would blush to record your father's rudeness and the low speech he heaped upon me during the ride. But, never once, did I lose courage, thinking of you, my brown-eyed darling.

At the city hall, terrible to relate, I was taken by force from the car and left in the care of your unsympathetic father while the ruffians went off to obtain the prison keys. But, by sheer strength, I overcame your unmannerly father and made my escape, fleeing through the city.

Now I lie in my dungeon, taken by the police, and I kiss the picture that you, my darling, sent me. Perhaps by the time you read these lines I shall be confronting your father in court, but not for a moment will I forget you, my queen of Grove. With a heart full of love,

Devotedly,

HUGH.

P. S.—Ask your esteemed father to return my gun—it was borrowed.



## These Really Happened

“Doc” Nichols—“Say, Mr. Wallace, are State students required to take shower baths?”

“Fats”—“Well, not exactly; but they do have to go past the Annex to their meals, and it amounts to the same thing.”

“Dumbell” Ellis entitled the masterly short story he produced for English I, “Behind the Curtain” and thought that his fame as an author was secure.

It came back to him ten days later marked, “Behind the Procession.” D.

Psychology Examination—“Why does a repeated action tend to become a habit?”

Chorus of answers—“Because it forms a habit.”

“Buddie” Green (scratching his head in despair)—“Darned if I see why this spleen looks so funny under my microscope.”

Dr. Godwin (taking a squint at the “spleen”)—“Rather inconsiderate of the spleen, Green. But you happen to have your instrument focused on the window pane.”

Prof. Crawford—“Why was the Yorktown Monument erected?”

Perfect silence.

W. D. Harris—“To celebrate the landing at Jamestown.”

Jim Early—“Lend me your pen, Kent.”

Kent—“Which one; frat or fountain.”

## The Chapel Bell

“Doc, the wretch, is ringing the bell,  
 Would to heaven he was in—well,  
 This aching head and heavy tongue  
 Are beginning to pay for my night of fun!”

“Here’s it’s eight A. M., and a rainy day,  
 And “Doc,” the brute, is ringing away,  
 While the old bell sounds a mournful call,  
 To the path of duty and the Science Hall.

“I’ll turn over now for another nap,  
 For a fellow can’t always be on tap,  
 Tho’, if they get my name at chapel today,  
 It’s “props” for me and the deuce to pay!”





# ORGANIZATIONS







# COLONIAL ECHO

1 - 9 - 1 - 6



## Alpha Chapter of Phi Beta Kappa

WILLIAM AND MARY

FOUNDERS

John Heath

Richard Booker

Thomas Smith

Armistead Smith

John Jones

The Phi Beta Kappa Society was organized at the College of William and Mary, December 5, 1776, and was a combination of a Greek letter fraternity and a debating society. From this humble beginning has grown the widely-known honor society, having upon its rolls the names of some of the most distinguished men in America.

The mother chapter's first period of existence was brief. In 1781, the scene of war shifted to the Virginia peninsula and when the college closed its doors, the few members gave up their archives and minutes into the hands of the college steward. The Society slumbered until 1849; the papers disappeared, but finally fell into the possession of the Virginia Historical Society which restored them to Alpha in 1893.

In this same year, Col. William Lamb revived the Society; the faculty were initiated; and a new era of prosperity began. Chapters had been established in the leading Northern colleges where they thrived from the first, and did much to elevate the fraternity to its present high rank.

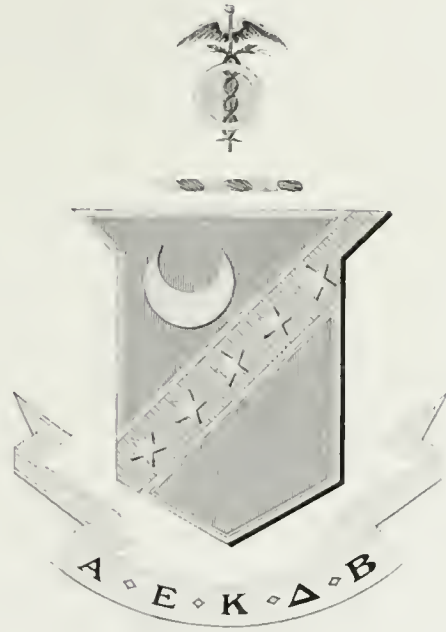
For its size (there are about two hundred names on the rolls), Alpha of Virginia, is one of the largest, strongest chapters, numbering among its members the most distinguished scholars and *litterateurs* of Virginia.

At William and Mary there are two classes of members: men distinguished in letters and science whom the College wishes to honor; and former students who have gone out into life and shown promise in literary or scientific paths. Any student on the rolls has it within his power to wear the key and win the honor that is so highly esteemed among educated and cultivated men of this land.

Phi Beta Kappa is not a secret fraternity, competing with other fraternities, but a "brotherhood of scholars."



COLONIAL ECHO





NU CHAPTER OF KAPPA SIGMA





KAPPA SIGMA

## Nu Chapter of Kappa Sigma

UNIVERSITY OF BOLOGNA, 1400.  
UNIVERSITY OF VIRGINIA, 1869.

COLORS: Scarlet, White, and Emerald Green.  
FLOWER: Lily of the Valley.

### FRATRES IN FACULTATE

LYON GARDINER TYLER, A.M., LL.D.  
James Southall Wilson, Ph.D.                      John Tyler, A.M.  
George Oscar Ferguson, A.M.                      Edward LeBaron Goodwin, M.D.  
Samuel Hildredth Hubbard, Jr., A.B.

### FRATRES IN COLLEGIO

William Cross Ferguson, '16.                      Benjamin Rosser James, '18.  
George Thornhill Caldwell, '16.                      James Kent Early, '18.  
Frederick Deane Goodwin Ribble, '16.                      Frank McCall Garnett, '18.  
Vernon Meredith Geddy, '18.                      Edward Dudley Spencer, '19.  
George Gordon Lane, '18.                      Richard Leonard Henley, '19.  
Henry Trevilian Moncre, '18.                      Quinton Gore Nottingham, '19.  
James Nelson Early, '18.                      Mortimer Harry Williams, '19.  
Samuel Newton Dalhouse, '18.                      John Young Hutcheson, '19.

### PLEDGE

Munford Ellis.

### FRATRES IN URBE

George Preston Coleman.                      Lionel Wymaane Roberts.  
Joseph Farland Hall.                      John Leslie Hall, Jr.  
George Benjamin Geddy.                      Bathurst Daingerfield Peachy, Jr.  
Thomas Henley Geddy, Jr.                      Thomas Peachy Spencer.  
Levin Winder Lane, 111





## Kappa Sigma

### ACTIVE CHAPTERS

BETA	University of Alabama, University, Ala.
GAMMA	Louisiana State University, Baton Rouge, La.
DELTA	Davidson College, Davidson, N. C.
ETA	Randolph-Macon College, Ashland, Va.
THETA	Cumberland University, Lebanon, Tenn.
IOTA	Southwestern University, Georgetown, Tex.
ZETA	University of Virginia, Charlottesville, Va.
KAPPA	Vanderbilt University, Nashville, Tenn.
LAMBDA	University of Tennessee, Knoxville, Tenn.
MU	Washington and Lee University, Lexington, Va.
NU	College of William and Mary, Williamsburg, Va.
XI	University of Arkansas, Fayetteville, Ark.
PI	Swarthmore College, Swarthmore, Pa.
SIGMA	Tulane University, New Orleans, La.
TAU	University of Texas, Austin, Texas.
UPSILON	Southwestern Presbyterian University, Clarksville, Tenn.
PHI	Hampden-Sidney College, Hampden-Sidney, Va.
CHI	Purdue University, Lafayette, Ind.
PSI	University of Maine, Orono, Me.
OMEGA	University of the South, Sewanee, Tenn.
ALPHA ALPHA	University of Maryland, Baltimore, Md.
ALPHA BETA	Mercer University, Macon, Ga.
ALPHA GAMMA	University of Illinois, Champaign, Ill.
ALPHA DELTA	Pennsylvania State College, State College, Pa.
ALPHA EPSILON	University of Pennsylvania, Philadelphia, Pa.
ALPHA ZETA	University of Michigan, Ann Arbor, Mich.
ALPHA ETA	George Washington University, Washington, D. C.
ALPHA KAPPA	Cornell University, Ithaca, N. Y.
ALPHA LAMBDA	University of Vermont, Burlington, Vt.
ALPHA MU	University of North Carolina, Chapel Hill, N. C.
ALPHA PI	Wabash College, Crawfordsville, Ind.
ALPHA RHO	Bowdoin College, Brunswick, Me.
ALPHA TAU	George School of Technology, Atlanta, Ga.
ALPHA SIGMA	Ohio State University, Columbus, Ohio.
ALPHA UPSILON	Millsaps College, Jackson, Miss.
ALPHA PHI	Bucknell University, Lewisburg, Pa.
ALPHA CHI	Lake Forest University, Lake Forest, Ill.
ALPHA PSI	University of Nebraska, Lincoln, Neb.
ALPHA OMEGA	William Jewel College, Liberty, Mo.
BETA ALPHA	Brown College, Richmond, Va.
BETA BETA	Richmond College, Richmond, Va.
BETA GAMMA	Missouri State University, Columbus, Mo.
BETA DELTA	Washington and Jefferson College, Washington, Pa.
BETA EPSILON	University of Wisconsin, Madison, Wis.
BETA ZETA	Leland Stanford, Jr., University, Palo Alto, Cal.





# COLONIAL ECHO



BETA ETA . . . . .	Alabama Polytechnic Institute, Auburn, Ala.
BETA THETA . . . . .	University of Indiana, Bloomington, Ind.
BETA IOTA . . . . .	Lehigh University, South Bethlehem, Pa.
BETA KAPPA . . . . .	New Hampshire College, Durham, N. H.
BETA NU . . . . .	Kentucky State College, Lexington, Ky.
BETA MU . . . . .	University of Minneapolis, Minneapolis, Minn.
BETA LAMBDA . . . . .	University of Georgia, Athens, Ga.
BETA XI . . . . .	University of California, Berkeley, Cal.
BETA OMICRON . . . . .	University of Denver, University Park Colo.
BETA PI . . . . .	Dickinson College, Carlisle, Pa.
BETA RHO . . . . .	University of Iowa, Iowa City, Iowa.
BETA SIGMA . . . . .	Washington University, St. Louis, Mo.
BETA TAU . . . . .	Baker University, Baldwin, Kan.
BETA UPSILON . . . . .	North Carolina Agr. and Mech. College, Raleigh, N. C.
BETA PHI . . . . .	Chase School of Applied Science, Cleveland, Ohio.
BETA CHI . . . . .	Missouri School of Mines, Rolla, Mo.
BETA PSI . . . . .	University of Washington, Seattle, Wash.
BETA OMEGA . . . . .	Colorado College, Colorado Springs, Colo.
GAMMA ALPHA . . . . .	University of Oregon, Eugene, Ore.
GAMMA BETA . . . . .	University of Chicago, Chicago, Ill.
GAMMA GAMMA . . . . .	Colorado School of Mines, Golden, Colo.
GAMMA DELTA . . . . .	Massachusetts State College, Amherst, Mass.
GAMMA EPSILON . . . . .	Dartmouth College, Hanover, N. H.
GAMMA ZETA . . . . .	New York University, New York, N. Y.
GAMMA ETA . . . . .	Harvard University, Cambridge, Mass.
GAMMA THETA . . . . .	University of Idaho, Moscow, Idaho.
GAMMA IOTA . . . . .	Syracuse University, Syracuse, N. Y.
GAMMA KAPPA . . . . .	University of Oklahoma, Norman, Okla.
GAMMA LAMBDA . . . . .	Iowa State College, Ames, Iowa.
GAMMA MU . . . . .	Washington State College, Pullman, Wash.
GAMMA NU . . . . .	Washburn College, Topeka, Kan.
GAMMA XI . . . . .	Dennison University, Granville, Ohio.
GAMMA OMICRON . . . . .	University of Kansas, Lawrence, Kan.
GAMMA RHO . . . . .	University of Arizona, Tucson, Ariz.
GAMMA PI . . . . .	Mass. Institute of Technology, Boston, Mass.

## ALUMNI CHAPTERS

Birmingham, Ala.	Louisville, Ky.	Savannah, Ga.
Buffalo, N. Y.	Lynchburg, Va.	Seattle, Wash.
Concord, N. C.	Portland, Me.	St. Louis, Mo.
Cincinnati, O.	Mephis, Tenn.	Salt Lake City, Utah.
Columbus, O.	Milwaukee, Wis.	Syracuse, N. Y.
Chicago, Ill.	Mobile, Ala.	Springfield, Mass.
Covington, Tenn.	New York City.	Tucson, Ariz.
Danville, Ill.	Newport News, Va.	Vicksburg, Miss.
Danville, Va.	New Orleans, La.	Pittsburg, Penn.
Denver, Colo.	Norfolk, Va.	Philadelphia, Penn.
Ithaca, N. Y.	Oakland, Cal.	Portland, Ore.
Indianapolis, Ind.	Omaha, Neb.	Richmond, Va.
Jackson, Miss.	Oklahoma, City, Okla.	Rustin, La.
Kingstown, N. C.	Peoria, Ill.	Washington, D. C.
Kansas City, Kan.	Scranton, Pa.	Wilmington, N. C.
Little Rock, Ark.	Schenectady, N. Y.	Yazoo, Miss.
Los Angeles, Cal.	San Francisco, Cal.	





### Inter-Fraternity Council

W. C. FERGUSON . . . . . Chairman  
 R. L. COMBS . . . . . Secretary

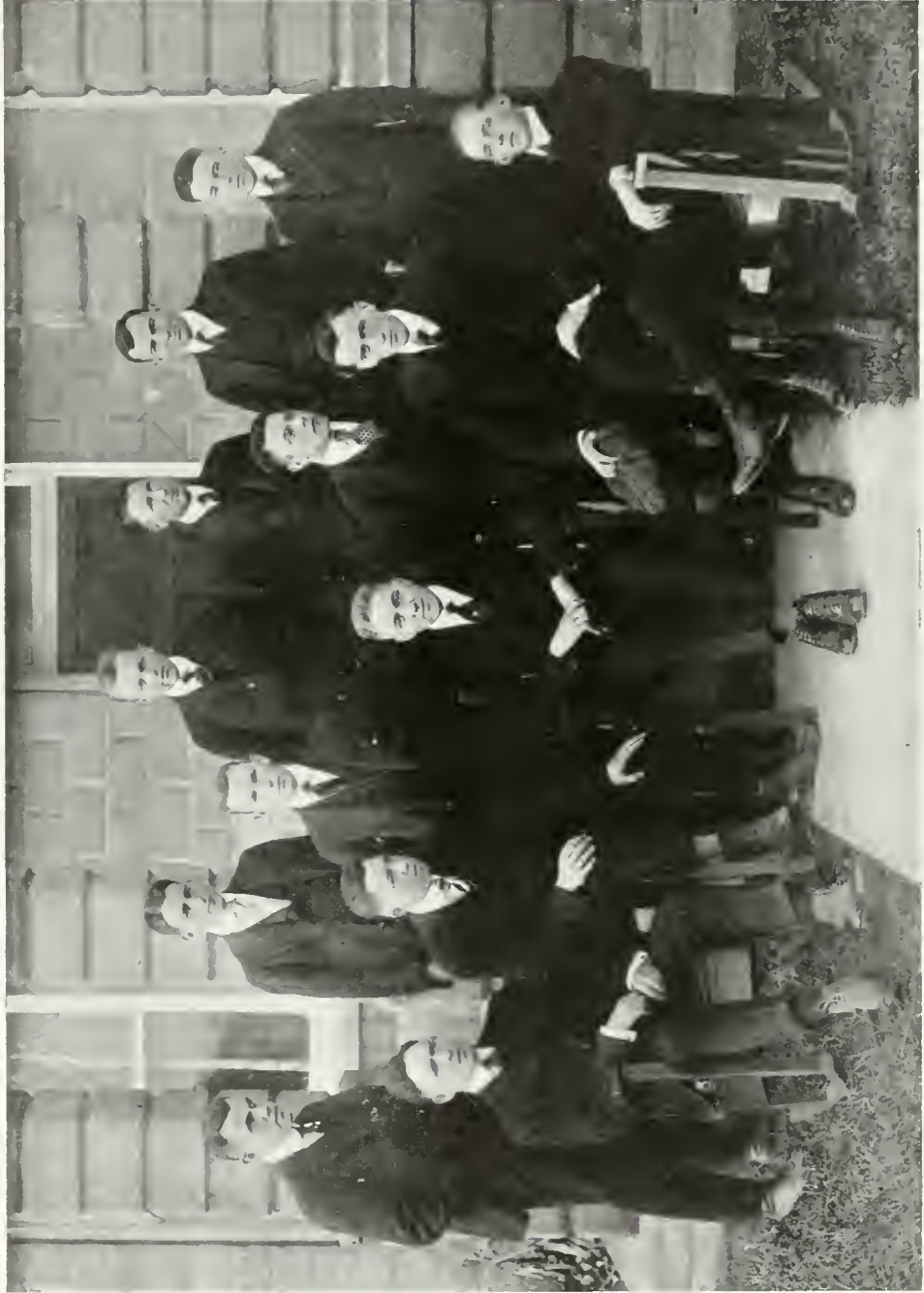
#### REPRESENTATIVES

Pi Kappa Alpha . . . . .	{ R. M. Newton { J. W. Stephens
Kappa Sigma . . . . .	{ W. C. Ferguson { G. T. Caldwell
Sigma Phi Epsilon . . . . .	{ W. T. Woodson { R. L. Combs
Theta Delta Chi . . . . .	{ J. M. Presson { G. B. Zehmer
Kappa Alpha . . . . .	{ W. B. Tillety { C. R. Heflin









VIRGINIA DELTA CHAPTER





# COLONIAL ECHO



S. P. E. HOUSE

## Virginia Delta Chapter Sigma Phi Epsilon

COLORS: Scarlet and Purple.

FLOWERS: American Beauties and Violets.

### YELL:

Sie-a-lace,  
Sie-a-sun;  
Sigma Phi Epsilon,  
Delta.

### FRATRES IN COLLEGIO

Wilbert Tucker Woodson  
Edwin Ralph James  
Alf. Johnson Mapp  
Robert Lincoln Combs  
John Harless Williamson  
James Thomas Waddill, Jr.

Robert Cowles Taylor  
J. Frank Wilson  
Forest Graves  
Magnus Muse Lewis, Jr.  
George Wythe Booth  
William McKinley Tuck

### FRATER IN UBRE

Ray Rufus Addington

### ALUMNI CHAPTERS

ALPHA	.	.	.	.	.	.	.	.	.	.	.	.	.	.	.	.	.	.	.	Richmond, Va.
BETA	.	.	.	.	.	.	.	.	.	.	.	.	.	.	.	.	.	.	.	Norfolk, Va.
GAMMA	.	.	.	.	.	.	.	.	.	.	.	.	.	.	.	.	.	.	.	Philadelphia, Penn.
DELTA	.	.	.	.	.	.	.	.	.	.	.	.	.	.	.	.	.	.	.	Chicago, Ill.
EPSILON	.	.	.	.	.	.	.	.	.	.	.	.	.	.	.	.	.	.	.	New York City, N. Y.
ETA	.	.	.	.	.	.	.	.	.	.	.	.	.	.	.	.	.	.	.	Washington, D. C.
THETA	.	.	.	.	.	.	.	.	.	.	.	.	.	.	.	.	.	.	.	San Francisco, Cal.
ZETA	.	.	.	.	.	.	.	.	.	.	.	.	.	.	.	.	.	.	.	Atlanta, Geo.
IOTA	.	.	.	.	.	.	.	.	.	.	.	.	.	.	.	.	.	.	.	Springfield, Ohio
KAPPA	.	.	.	.	.	.	.	.	.	.	.	.	.	.	.	.	.	.	.	Syracuse, N. Y.
LAMBDA	.	.	.	.	.	.	.	.	.	.	.	.	.	.	.	.	.	.	.	Boston, Mass.
MU	.	.	.	.	.	.	.	.	.	.	.	.	.	.	.	.	.	.	.	Ashville, N. C.
NU	.	.	.	.	.	.	.	.	.	.	.	.	.	.	.	.	.	.	.	Baldwin, Kan.
XI	.	.	.	.	.	.	.	.	.	.	.	.	.	.	.	.	.	.	.	Hampton, Va.
OMICRON	.	.	.	.	.	.	.	.	.	.	.	.	.	.	.	.	.	.	.	Union Springs, Ala.





# COLONIAL ECHO



## Sigma Phi Epsilon Fraternity

### FOUNDERS

CARTER G. JENKINS  
 BENJ. P. GAW  
 W. HUGH CARTER  
 WILLIAM G. WALLACE  
 THOMAS S. PHILIPPS

Gold-sboro, N. C.  
 Stuarts Draft, Va.  
 Chase City, Va.  
 Stuarts Draft, Va.  
 Newark, N. J.

### ACTIVE CHAPTERS

VIRGINIA ALPHA	Richmond College, Richmond, Va.
WEST VIRGINIA BETA	West Virginia University, Morgantown, W. Va.
PENNSYLVANIA DELTA	University of Pennsylvania, Philadelphia, Pa.
COLORADO ALPHA	University of Colorado, Boulder, Colo.
VIRGINIA DELTA	College of William and Mary, Williamsburg, Va.
NORTH CAROLINA BETA	North Carolina College of Agr. and Mech. Arts, Raleigh, N. C.
INDIANA ALPHA	Purdue University, W. Lafayette, Indiana.
NEW YORK ALPHA	Syracuse University, Syracuse, N. Y.
VIRGINIA EPSILON	Washington and Lee University, Lexington, Va.
VIRGINIA ZETA	Randolph- Macon College, Ashland, Va.
GEORGIA ALPHA	Georgia School of Technology, Atlanta, Ga.
DELAWARE ALPHA	Delaware State College, Newark, Del.
VIRGINIA ETA	University of Virginia, Charlottesville, Va.
ARKANSAS ALPHA	University of Arkansas, Fayetteville, Ark.
PENNSYLVANIA EPSILON	Lehigh University, South Bethlehem, Pa.
OHIO GAMMA	Ohio State University, Columbus, Ohio.
VERMONT ALPHA	Norwich University, Northfield, Vt.
ALABAMA ALPHA	Alabama Polytechnic Institute, Auburn, Ala.
NORTH CAROLINA GAMMA	Trinity College, Rurham, N. C.
NEW HAMSHIRE ALPHA	Dartmouth College, Hanover, N. H.
DISTRICT OF COLUMBIA ALPHA	George Washington University, Washington, D. C.
KANSAS ALPHA	Baker University, Baldwin, Kan.
CALIFORNIA ALPHA	University of California, Berkeley, Cal.
NEBRASKA ALPHA	University of Nebraska, Lincoln, Neb.
WASHINGTON ALPHA	State College of Washington, Pullman, Wash.
OHIO ALPHA	Ohio Northern University, Ada, Ohio.
MASSACHUSETTS ALPHA	Massachusetts Agricultural College, Amherst, Mass.
NEW YORK BETA	Cornell University, Ithaca, N. Y.
RHODE ISLAND ALPHA	Brown University, Providence, R. I.
MICHIGAN ALPHA	University of Michigan, Ann Arbor, Mich.
IOWA ALPHA	Iowa Wesleyan University, Mt. Pleasant, Iowa.
TENNESSEE ALPHA	University of Tennessee, Knoxville, Tenn.
COLORADO BETA	University of Denver, Denver, Colo.
MISSOURI ALPHA	University of Missouri, Columbia, Mo.
WISCONSIN ALPHA	Lawrence College, Appleton, Wis.
PSNNSYLVANIA ETA	Penn. State College, Penn.
OHIO EPSILON	Ohio Wesleyan University, Delaware, Ohio.
COLORADO GAMMA	Col. Agricultural College, Collins, Colo.

### ALUMNI CHAPTERS

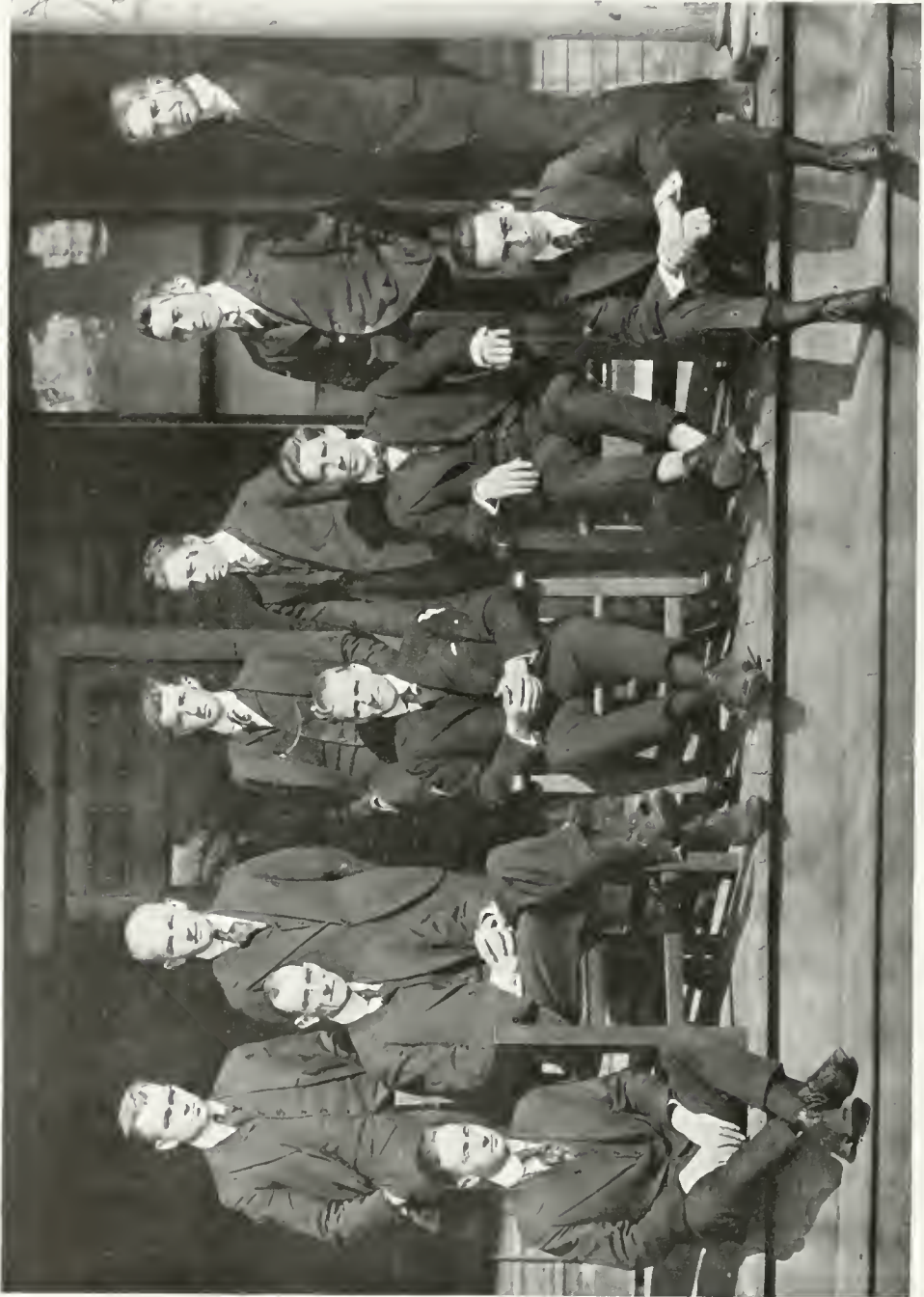
ALPHA	Richmond, Virginia.
BETA	Norfolk, Virginia.
GAMMA	Philadelphia, Pennsylvania.
DELTA	Chicago, Illinois.
EPSILON	New York City, New York.
ETA	Washington, D. C.
TUETA	San Francisco, California.
ZETA	Atlanta, Georgia.
IOTA	Springfield, Ohio.
KAPPA	Syracuse, New York.
LAMBDA	Boston, Massachusetts.
MU	Asheville, North Carolina.
NU	Baldwin, Kansas.
XI	Hampton, Virginia.
OMICRON	Union Springs, Alabama.





1652





EPSILON CHI PHI





## Epsilon Charge of Theta Delta Chi

Fraternity founded, 1847.

Charge established May 12, 1853.

COLORS: Black, White and Blue.

FLOWER: Red Carnation.

GEM: Ruby.

YELL:

Ziprick! Ziprick! Hi! Ki! Si!

Epsilon! Epsilon!

Theta Delta Chi!

### FRATRES IN COLLEGIO

George Baskerville Zehmer.  
 Hervey Page Williams.  
 John Morris Presson.  
 Cecil Conrad Graves.  
 Herbert Gray Chandler.  
 Albert Pemberton Robinson.

Thomas Granville Pullen, Jr.  
 Lewis Perrin Sutherland.  
 William Brayshaw  
 James Steptoe Robinson.  
 Thomas Wilson Joynes.  
 John Gregory Warburton.

### IN URBE

Herbert Wentworth Vaden.

(Founded at Union College, 1848)

### CHARGES

BETA	Cornell University, 1870.
GAMMA DEUTERON	University of Michigan, 1889.
DELTA DEUTERON	University of California, 1900.
EPSILON	University of William and Mary, 1853.
ZETA	Brown University, 1853.
ZETA DEUTERON	McGill University, 1901.
ETA	Bowdoin College, 1854.
ETA DEUTERON	Leland Stanford, Jr., University, 1903.
THETA DEUTERON	Massachusetts Institute of Technology, 1890.
IOTA DEUTERON	Williams College, 1891.
KAPPA	Tufts College, 1856.
KAPPA DEUTERON	University of Illinois, 1908.
LAMBDA	Boston University, 1877.
MU DEUTERON	Amherst College, 1885.
NU	University of Virginia, 1857.
NU DEUTERON	Lehigh University, 1884.
XI	Hobard College, 1857.
OMICRON DEUTERON	Dartmouth College, 1869.
PI DEUTERON	College of the City of New York, 1831.
RHO DEUTERON	Columbia University, 1883.
SIGMA DEUTERON	University of Wisconsin, 1895.
TAU DEUTERON	University of Minnesota, 1892.
PHI	Lafayette College, 1867.
CHI	University of Rochester, 1867.
CHI	George Washington University, 1896.
PSI	Hamilton College, 1868.
XI DEUTERON	University of Washington, 1913.
PHI DEUTERON	University of Pennsylvania, 1915.

## Graduate Organizations of Theta Delta Chi

Gamma Deuteron Association of Theta Delta Chi, 1899.  
 Epsilon Alumni Association, 1901.  
 Epsilon Deuteron, Thirty-six Club 1903.  
 Zeta Alumni Association, 1898.  
 Zeta Deuteron Alumni Association, 1902.  
 Eta Chapter House Corporation, 1905.  
 Iota Graduate Association, 1902.  
 Theta Delta Chi Association of Williams College, 1906.  
 Kappa Charge of the Delta Chi Fraternity Corporation, 1883.  
 Lambda Graduate Association, 1899.  
 Theta Delta Chi Building Association, Champaign, Ill.  
 New York Association of Lambda Alumni.  
 Mu Deuteron Association of Theta Delta Chi Society, 1890.  
 Nu Deuteron Alumni Association, 1908.  
 Xi Charge of Theta Survivors Association, 1908.  
 Omicron Deuteron Alumni Association.  
 Graduate Association of Pi Deuteron, 1906.  
 Rho Alumni Association, 1907.  
 Rho Deuteron Alumni Association, 1903.  
 Rho Deuteron Company, 1904.  
 Sigma Deuteron Alumni Association of Theta Delta Chi, 1903.  
 The Wisconsin Association of Theta Delta Chi, 1885.  
 Tau Deuteron Alumni Association.  
 Phi Alumni Association, 1904.  
 Chi Alumni Association.  
 Chi Alumni Association of New York, 1909.  
 Chi Deuteron Graduate Association, 1901.  
 Psi Alumni Association.  
 Graduate Club of Theta Delta Chi, New York, 1896.  
 New York Graduate Association, 1856.  
 New England Association, 1884.  
 Rhode Island Alumni Association of Theta Delta Chi, 1898.  
 Central New York Graduate Association of Theta Delta Chi, 1905.  
 Rochester Graduate Association of Theta Delta Chi, 1902.  
 Buffalo Graduate Association, 1891.  
 Graduate Association of Theta Delta Chi of Western Pennsylvania, 1903.  
 Central Graduate Association, Chicago, 1890.  
 Kansas City Graduate Association of Theta Delta Chi, -907.  
 Minnesota Association, 1900.  
 The Theta Delta Chi, Montreal, 1907.  
 Eastern Maine Association, 1907.  
 Theta Delta Chi Corporation of Rhode Island, 1908.  
 The Connecticut Association of Theta Delta Chi, 1908.  
 The Connecticut Association of Theta Delta Chi, 1897.  
 Northwestern Graduate Association of Theta Delta Chi, Seattle, 1909.  
 The Boston Club of Theta Delta Chi, 1909.  
 Cleveland Alumni Association of Theta Delta Chi, 1909.  
 The Central Illinois Association of Theta Delta Chi, 1908.  
 Kappa Semi-Centennial Fund Trustees.  
 Psi House Trustees.  
 Chi Deuteron Fund Trustees, 1906.  
 Phi House Trustees.  
 Association of Theta Delta Chi, 1897.  
 Theta Delta Chi Press, 1907.  
 Graduate Club of Theta Delta Chi, 1896.  
 Theta Delta Chi Founders' Corporation, 1912.  
 Washington Graduate Association of Theta Delta Chi, 1910.  
 Columbia River Association of Theta Delta Chi, 1911.  
 The Theta Delta Chi Association of the State of Virginia, 1911.  
 The Southern Tier Graduate Association of Theta Delta Chi, 1911.  
 Southern California Graduate Association of Theta Delta Chi, 1912.  
 Central Ohio Alumni Association of Theta Delta Chi, 1912.  
 The Philadelphia Graduate Association of Theta Delta Chi, 1913.  
 Western Maine Association of Theta Delta Chi, 1913.





COLONIAL ECHO  
1 - 9 - 1 - 6





19

16

R. M. NEWTON

A. C. GORDON

T. W. STEPHENS

W. S. BRENT

H. W. THORPE

A. P. TUCKER

R. D. ELLIS

R. F. JENNIS

H. M. WALKER

S. B. HALL

H. C. BARNER

A. D. BARNER

E. E. STEPHENS

F. B. TOLSON

R. MURPHY

19

16





## Gamma Chapter of Pi Kappa Alpha

(Founded March 1, 1868, at the University of Virginia.)

FLOWERS: Lily of the Valley and Gold Standard Tulip.

CHAPTER FLOWER: Pansy.

### FRATRES IN COLLEGIO

William Seymour Brent.	Hugh Campbell Parker.
Roy Dunbar Ellis	James Warren Stephens.
Sidney Bartlett Hall.	Eunolls Eugene Stephens.
Arnstead Churchill Gordon, Jr.	H. Wilson Thorpe.
Floyd Franklin Jenkins.	Frank Bowie Tolson.
Robert Murphy Newton.	Arthur Peoples Tucker.
Arthur Douglas Parker.	Henry Martin Walker.

### PLEDGE

Robert Murphy.

### FRATRES IN URBE

Dr. G. A. Hankins.

Dr. G. G. Hankins.

### ALUMNI CHAPTERS

Alumnus Alpha . . . . .	Richmond, Va.
Alumnus Beta . . . . .	Memphis, Tenn.
Alumnus Gamma . . . . .	White Sulphur Springs, W. Va.
Alumnus Delta . . . . .	Charleston, S. C.
Alumnus Epsilon . . . . .	Norfolk, Va.
Alumnus Zeta . . . . .	Dillon, S. C.
Alumnus Eta . . . . .	New Orleans, La.
Alumnus Theta . . . . .	Dallas, Texas.
Alumnus Iota . . . . .	Knoxville, Tenn.
Alumnus Kappa . . . . .	Charlottesville, Va.
Alumnus Lambda . . . . .	Opelika, Ala.
Alumnus Mu . . . . .	Fort Smith, Ark.
Alumnus Nu . . . . .	Birmingham, Ala.
Alumnus Xi . . . . .	Lynchburg, Va.
Alumnus Omicron . . . . .	Spartanburg, S. C.
Alumnus Pi . . . . .	Gainesville, Ga.
Alumnus Rho . . . . .	Lexington, Ky.
Alumnus Sigma . . . . .	Raleigh, N. C.
Alumnus Tau . . . . .	Salisbury, N. C.
Alumnus Upsilon . . . . .	Charlotte, N. C.
Alumnus Phi . . . . .	Hattiesburg, Miss.
Alumnus Chi . . . . .	Muskogee, Okla.
Alumnus Psi . . . . .	Pensacola, Fla.
Alumnus Omega . . . . .	Nashville, Tenn.
Alumnus Alpha-Alpha . . . . .	Jacksonville, Fla.
Alumnus Alpha-Beta . . . . .	San Francisco, Cal.
Alumnus Alpha-Gamma . . . . .	Atlanta, Ga.
Alumnus Alpha-Delta . . . . .	Kansas City, Mo.
Alumnus Alpha-Epsilon . . . . .	New York City.



## Pi Kappa Alpha Directory

### FOUNDERS

*Frederick Southgate Taylor, B.A.	Norfolk, Va.
*Julian Edward Wood, M.D.	Elizabeth, N. C.
Littleton Walter Qozewell	Norfolk, Va.
*Robinson Howard, M. A., M.O., LL.D.	Washington, D. C.
*James Benjamin Schlater	Richmond, Va.
* Deceased.	

### CHAPTER ROLL

#### ALUMNI CHAPTERS

ALPHA	University of Virginia	University, Va.
BETA	Davidson College	Davidson, N. C.
GAMMA	William and Mary College,	Williamsburg, Va.
DELTA	Southern University	Greesboro, Ala.
ZETA	University of Tennessee	Knoxville, Tenn.
ETA	Tulane University	New Orleans, La.
THETA	Southwestern Pres. University,	Clarks-ville, Tenn.
IOTA	Hampden-Sidney College	Hampden-Sidney, Va.
KAPPA	Transylvania University	Lexington, Ky.
OMICRON	Richmond College	Richmond, Va.
PI	Washington and Lee University	Lexington, Va.
TAU	University of North Carolina	Chapel Hill, N. C.
UPSILON	Alabama Polytechnic Institute	Auburn, Ala.
PSI	North Georgia Agricul. College	Dahlongea, Ga.
OMEGA	Kentucky State University	Lexington, Ky.
ALPHA-ALPHA	Trinity College	Durham, N. C.
ALPHA-GAMMA	Louisiana State University	Baton Rouge, La.
ALPHA-DELTA	Georgia School of Technology	Atlanta, Ga.
ALPHA-EPSILON	North Carolina A. & M. College	Raleigh, N. C.
ALPHA-ZETA	University of Arkansas	Fayetteville, Ark.
ALPHA-ETA	University of State of Florida	Gainesville, Fla.
ALPHA-IOTA	Millsaps College	Jackson, Miss.
ALPHA-KAPPA	Missouri School of Mines	Rolla, Mo.
ALPHA-LAMBDA	Georgetown College	Georgetown, Ky.
ALPHA-NU	University of Missouri	Columbus, Mo.
ALPHA-XI	University of Cincinnati	Cincinnati, Ohio
ALPHA-OMICRON	Southwestern University	Georgetown, Texas
ALPHA-PI	Howard College	East Lake, Ala.
ALPHA-PHO	Ohio State University	Columbus, Ohio.
ALPHA-SIGMA	University of California	Berkeley, Cal.
ALPHA-TAU	University of Utah	Salt Lake City, Utah
ALPHA-UPSILON	New Work University	New York City
ALPHA-PHI	I. S. C.—"Ames"	Ames, Iowa
ALPHA-CHI	Syracuse University	Syracuse, N. Y.
ALPHA-PSI	Rutgers College	New Brunswick, N. J.
ALPHA-OMEGA	K. S. A. C.—"Manhattan"	Manhattan, Kans.
BETA-ALPHA	Pennsylvania State College	State College, Pa.
BETA-BETA	University of Washington	Seattle, Wash.
BETA-GAMMA	University of Kansas	Lawrence, Kan.
BETA-DELTA	University of New Mexico	Albuquerque, N. Mex.







ALPHA ZETA CHAPTER





## Alpha-Zeta Chapter of Kappa Alpha

(Established in 1890.)

Colors: Crimson and Old Gold.

Flowers: Magnolia and Red Rose.

YELL:

K. A. Kappa,

Kappa Alpha.

K. A. Alpha;

Alpha Zeta.

### FRATRES IN COLLEGIO

Richard Watson Copeland.

Robert John Johnson.

Edgar Maiseille Tennis.

John Chandler Dugger.

Charles Ashley Muncaster.

John Boyd Bentley.

Cecil Randolph Heflin.

Richard Brownley Gayle.

William Waller Johnson.

William Benjamin Tilley.

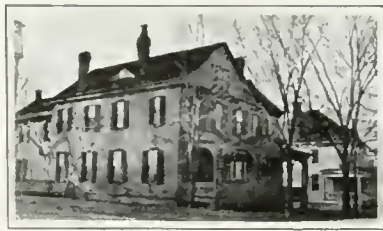
### FRATER IN URBE

Spencer Lane.

### ALUMNI CHAPTERS

ALEXANDRIA, LA. . . . .	Nauman Scott.
ANNISTON, ALA. . . . .	Walker Reynolds.
ATLANTA, GA. . . . .	William Niller, 619 Equitable Building.
BALTIMORE, MD. . . . .	E. R. Buraeker, Jr., 2800 Calvert Street.
BIRMINGHAM, ALA. . . . .	F. B. Latade, Steiner Building.
BOSTON, MASS. . . . .	Cyrus W. Beale, 26 Garden Street, Cambridge, Mass.
CANAL ZONE . . . . .	Dr. W. M. James, Ancon Hospital, Ancon, Canal Zone.
CHARLESTON, W. VA. . . . .	S. C. Littlepage.
CHATTANOOGA, TENN. . . . .	John W. Evans, First National Bank.
COLUMBIA, S. C. . . . .	B. P. Barron, L. & E. Bank Building.
COLUMBIA UNIVERSITY . . . . .	Dr. Rupert Taylor, Livingston Hall.
COLUMBUS, GA. . . . .	Lyman Buttolph.
DENVER, COLO. . . . .	DeLos Walker, Fire and Police Commission.
FORT SMITH, ARK. . . . .	Dr. Clark Wood.
HAMPTON, NEWPORT NEWS, VA. . . . .	H. H. Holt.
HATTIESBURG, MISS. . . . .	Stokes V. Robertson.
HOUSTON, TEXAS . . . . .	George D. Eears.
HUNTINGTON, W. VA. . . . .	E. W. Townsend.
ITHICA, N. Y. . . . .	D. C. Reib.
KNOXVILLE, TENN. . . . .	W. P. Toms.
LEXINGTON, KY. . . . .	Harry C. Stucky.
LITTLE ROCK, ARK. . . . .	A. W. Dobyns.
LOS ANGELES, CAL. . . . .	Emerson L. Duff, 409 Lissner Building.
MEMPHIS, TENN. . . . .	H. F. Daniels, Porter Building.
MUSCOGEE, OKLA. . . . .	George A. Lowry.
NASHVILLE, TENN. . . . .	Thomas G. Watkins, Stahlman Building.
NEW HAVEN, CONN. . . . .	Paul Rider, 16 York Square.
NEW ORLEANS, LA. . . . .	Arther Moreno, 606 Common Street.
NEW YORK CITY . . . . .	Joseph D. Truxton, Essexalls, N. J.
NORFOLK, VA. . . . .	R. W. Waldrop, Jr., 73 Boush Street.
PARIS, TENN. . . . .	W. C. Jernigan.
RALEIGH, N. C. . . . .	A. T. Bowler, Citizens' National Bank.
RICHMOND, VA. . . . .	L. F. Blanton, 1108 East Main Street.
SALT LAKE CITY . . . . .	Henry J. Brothers, 71 Commercial Block.
SAN ANTONIO, TEXAS . . . . .	Liston A. Casey, 519 Moore Building.
SAN FRANCISCO . . . . .	Roy G. Thompson, 40 Powell Street.
SHEVEPORT, LA. . . . .	Newton B. Stoer.
SPRINGFIELD, MO. . . . .	Vance Criss.
ST. LOUIS, MO. . . . .	E. W. Lewis, 5987 Page Avenue.
TAMPA, FLA. . . . .	J. M. Shackelford, Jr.
WASHINGTON, D. C. . . . .	Charles B. Coffin, 1517 P. Street, N. W.
WILMINGTON, DEL. . . . .	A. T. Davenport, Y. M. C. A. Building.





## Kappa Alpha Directory

ALPHA	Washington and Lee University, Lexington, Va.
GAMMA	University of Georgia, Athens, Ga.
EPISILON	Emory College, Oxford, Ga.
ZETA	Randolph-Macon College, Ashland, Va.
ETA	Richmond College, Richmond, Va.
THETA	University of Kentucky, Lexington, Ky.
KAPPA	Mercer University, Macon, Ga.
LAMBDA	University of Virginia, Charlottesville, Va.
NU	Alabama Polytechnic Institute, Auburn, Ala.
XI	Southwestern University, Georgetown, Texas.
OMICRON	University of Texas, Austin Texas.
PI	University of Tennessee, Knoxville, Tenn.
SIGMA	Davidson College, Davidson, N. C.
UPSILON	University of North Carolina, Chapel Hill, N. C.
PHI	Southern University, Greensboro, Ala.
CHI	Vanderbilt University, Nashville, Tenn.
PSI	Tulane University, New Orleans, La.
OMEGA	Central University of Kentucky, Danville, Ky.
ALPHA ALPHA	University of the South, Sewanee, Tenn.
ALPHA BETA	University of Alabama, Tuscaloosa, Ala.
ALPHA GAMMA	Louisiana State University, Baton Rouge, La.
ALPHA DELTA	William Jewell College, Liberty, Mo.
ALPHA ZETA	William and Mary College, Williamsburg, Va.
ALPHA ETA	Westminster College, Fulton, Mo.
ALPHA THETA	Transylvania University, Lexington, Ky.
ALPHA KAPPA	University of Missouri, Columbia, Mo.
ALPHA MU	Millsaps College, Jackson, Miss.
ALPHA NU	The George Washington University, Washington, D. C.
ALPHA XI	University of California, Berkeley, Cal.
ALPHAOMICRON	University of Arkansas, Fayetteville, Ark.
ALPHA PI	Leland Stanford, Jr., University, Palo Alto, Cal.
ALPHA RHO	West Virginia University, Morgantown, W. Va.
ALPHA SIGMA	George School of Technology, Atlanta, Ga.
ALPHA TAU	Hampden-Sidney College, Hampden-Sidney, Va.
ALPHI PHI	Trinity College, Durham, N. C.
ALPHA OMEGA	North Carolina Agr. and Mech. College, Raleigh, N. C.
BETA ALPHA	Missouri School of Mines, Rolla, Mo.
BETA BETA	Bethany College, Bethany, W. Va.
BETA GAMMA	College of Charlestown, Charlestown, S. C.
BETA DELTA	Georgetown College, Georgetown, Ky.
BETA EPSILON	Delaware College, Newark, Del.
BETA ZETA	University of Florida, Gainesville, Fla.
BETA ETA	University of Oklahoma, Norman, Okla.
BETA THETA	Washington University, St. Louis, Mo.
BETA IOTA	Drury College, Springfield, Mo.





COLONIAL ECHO  
1 - 9 - 1 - 6





# COLONIAL ECHO



GORDON-HOPE CHAPTER





## Gordon-Hope Chapter of Sigma Upsilon

The Gordon Hope Chapter of William and Mary College was founded as a literary club on the 24th of February, 1913, and was received into the Sigma Upsilon Fraternity on May 1, 1914.

MOTTO: "An incurable itch for scribbling seizes many and grows inveterate in their insane breasts."

COLOURS: Dark Green and Gold.

EMBLEM: Jonquil.

DRINK: Saturated Solution of Nectar.

	<i>President</i>	<i>Vice-President</i>	<i>Secretary-Treasurer</i>
First Term.....	W. C. Ferguson	W. D. Harris	V. L. Guy
Second Term.....	W. D. Harris	P. N. Derring	F. G. Ribble

### FRATRES IN COLLEGIO

W. C. Ferguson	F. D. G. Ribble
W. D. Harris	T. G. Pullen
P. N. Derring	R. L. Combs
V. L. Guy	C. R. Hedlin
J. W. Stephens	I. W. Robertson
H. G. Chandler	J. B. Bentley

### FRATRES IN FACULTATE

James Southall Wilson, Ph.D.                      Wesley P. Clark, M.A.

### IN URBE

Rev. G. H. Newberry.

### CHAPTER ROLL OF SIGMA UPSILON

Sopherim	University of the South
Calumet	Vanderbilt University
Osiris	Randolph-Macon College
Senior Round Table	University of Georgia
Odd Number Club	University of North Carolina
Boar's Head	Transylvania University
Scribblers	University of Mississippi
Kit Kat	Millsaps College
Scarab	University of Texas
Fortnightly	Trinity College
Coffee House	Emory College
Scribes	University of South Carolina
Attie	University of Alabama
Grub Street	University of Washington
Gordon-Hope	William and Mary College
Blue Pencil	Davidson College
Sphinx	Hampden-Sidney College
Ye Tabard Inn	University of Oregon

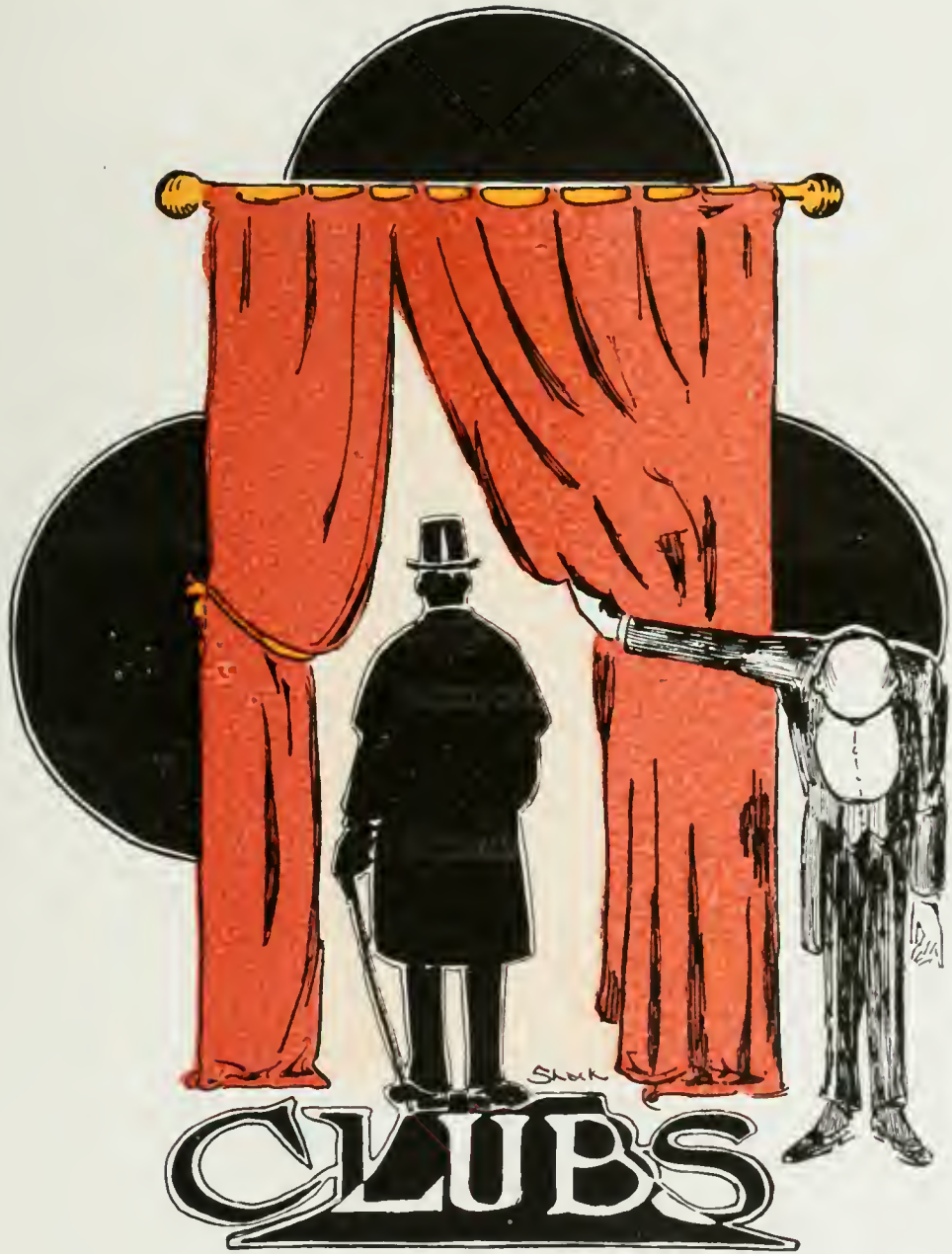




Club A La Jefferson

"Judge" Deane	.	.	.	.	.	.	.	.	.	.	.	.	.	.	.	.	.	.	.	.	J
"Bugs" Geddy	.	.	.	.	.	.	.	.	.	.	.	.	.	.	.	.	.	.	.	.	Je
"Dick" Henley	.	.	.	.	.	.	.	.	.	.	.	.	.	.	.	.	.	.	.	.	Jeff
"Buddie" Green	.	.	.	.	.	.	.	.	.	.	.	.	.	.	.	.	.	.	.	.	Jeffe
"Cross Track" Spencer	.	.	.	.	.	.	.	.	.	.	.	.	.	.	.	.	.	.	.	.	Jeffers
"Prentis" Moncure	.	.	.	.	.	.	.	.	.	.	.	.	.	.	.	.	.	.	.	.	Jeffers
"Red" Hall	.	.	.	.	.	.	.	.	.	.	.	.	.	.	.	.	.	.	.	.	Jefferso
"Big Chief" Garnett	.	.	.	.	.	.	.	.	.	.	.	.	.	.	.	.	.	.	.	.	Jefferson







## The Monogram Club

### OFFICERS

A. P. TUCKER	President
W. E. ZION	Vice-President
R. L. COMBS	Secretary
W. C. West	Treasurer

### MEMBERS

Addington, R. R.	Jones, H. H.
Caldwell, G. T.	Lassiter
Combs, R. L.	Maddox, A. L.
Copeland, R. W.	Newton, R. M.
Doss, R. R.	Robinson, A. P.
Early, J. K.	Robertson, I. W.
Ferguson, W. C.	Stephens, E. E.
Gayle, R. B.	Stryker, H. M.
Geddy, Vernon	Tucker, A. P.
Garnett, F. M.	Wallace, R. P.
Goslee, A. H.	West, W. C.
Green, D. P.	Wilson, J. F.
Hedrick, J. W.	Zehmer, G. B.
Hellin, C. R.	Zion, W. E.
	Tilley, W. B.





# COLONIAL ECHO



## Cabaret Club

MEETING PLACE: "Cabaret" Jones' Dance Hall.

SONG: "Tulip"

DRINK: Dishwater

DANCE: Gauder Gallop.

Dancing Master	.....	"Buddy" Green
Russian Dancer	.....	"Polly" Stryker
Souvenir Collector	.....	"Dick" Gale
Grand Frequenter	.....	"Doc" Deane

### Waiters

"Mut" Goslee	"Giraffe" Stephens	"Pete" James
"Bill" Tilley	"Mooks" Maddox	"Kent" Early
"Cowboy" Tennis	"Mac" McCormick	"Fatty" Graves

### Chorus Girls

"Fats" Wallace	"Ed" Spencer	"Prex" Wilson
"Frank" Garnett	"Doctor" Hammil	"Harry" Walker
"Henry" Moncure	"Hugh" Parker	"Mag" Lewis

### Orchestra

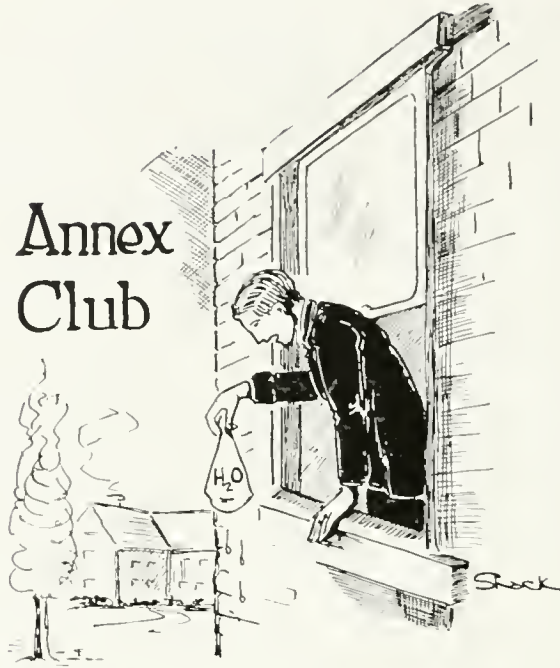
"Doc" Gordon	"Buck" Tucker	"Dick" Henley
"Monk" Ellis	"Doc" Muray	"Red" Hall
"Bugs" Gedydy	"Pete" Caldwell	

### Bartender

"Doc" Billups



# Annex Club



MOTTO: "Come unto us and we will do you good."

COLORS: A Red Rag.

YELL: "Duc" in the Annex.

## OFFICERS

HENRY MONCURE . . . . . Chief Clerk and Bottle-Washer

## STAFF

F. M. GARNETT . . . . .	Chief of First Division
"FATS" WALLACE . . . . .	Chief of Second Division
A. H. GOSLEE . . . . .	Chief Initiator
C. A. MUNCASTER . . . . .	Official Gasbag
D. C. DEANE . . . . .	"Movie" Reporter
"GRIC" FARMER . . . . .	Council for Defense
"DUC" TENNIS . . . . .	Leader of the Orchestra
W. C. WEST . . . . .	Chaplain
FULLER, KISER and MUSICK . . . . .	Bone-Pullers

## MEMBERS

Babb	Fuller	Tennis
Byrd	Rocklin	Wallace
Berry	Rash	West
Cook	Scott	Muncaster
Copeland	Garnett	Musick
Deane	Goslee	Robinson
Early	Pagerman	Lohr
Elmore	Hillard	Maddox
Farmer	Hammel	Moncure
Forehand	Kiser	







OFFICERS

HENRY T. MONCURE	President
R. M. NEWTON	Vice-President
W. D. HARRIS	Secretary
A. D. PARKER	Treasurer

MEMBERS

- |                |                  |
|----------------|------------------|
| W. C. Ferguson | G. B. Zelmer     |
| J. J. Lane     | L. P. Sutherlin  |
| W. D. Harris   | R. L. Combs      |
| S. N. Dalhouse | J. S. Robinson   |
| W. W. Winsbro  | Q. R. Nottingham |
| V. L. Guy      | C. E. Williams   |
| H. P. Williams | B. R. James      |
| R. M. Newton   | H. T. Moncure    |
| A. P. Robinson | E. D. Spencer    |
| H. W. Thorpe   | S. B. Hall       |
| A. P. Tucker   | M. H. Williams   |
| V. M. Geddy    | R. E. Henley     |
| F. B. Tolson   | W. T. Woodson    |
| R. B. Gayle    | G. T. Caldwell   |
| W. B. Tilley   | A. D. Parker     |
| J. N. Early    | E. R. James      |





## Southwest Club

MOTTO: Early to bed and early to rise, makes men health, wealthy and wise.

Colors: Blue and Gold.

Drink: Tom and Jerry.

### OFFICERS

R. L. COMBS	President
J. P. INGLE	Vice-President
I. W. ROBERTSON	Secretary
W. C. WEST	Treasurer
ZION, CHARLTON and STEDMAN	Executive Committee

### MEMBERS

W. C. West	R. L. Combs	T. H. Campbell
B. W. Woods	I. W. Robertson	G. S. Via
W. E. Zion	H. L. Mitchell	F. P. Early
V. Stedman	W. H. Cheatham	J. K. Early
J. P. Ingle	E. E. Connor	J. N. Early
Charlton	A. M. Renick	J. W. Hedrick
Dougherty	D. C. Renick	W. L. McCormick





# Ananias Club

PURPOSE: To win for ourselves a greater reputation.

MOTTO: Lie when you have occasion, and sometimes when you have none.

### REQUIREMENTS:

Candidate must give ample proof that he holds the record for his home town; no amateurs need apply. Degrees are based upon competitive examination. All contestants must apply to Judge C. A. Muncaster, M.L. (Master of Liars), Magna cum laude! "Parson" Brown, assistant, M.L.

### HOLDERS OF DEGREES

"Mac" McCormick, B.L. (Bachelor of Liars)

"Buddy" Green, B.L. "Polly" Stryler, B.L. Hon T. G. Pullen, B.L.

### HOLDERS OF LIARS CERTIFICATES

Bill Brent	Hutcheson	Campbell
Bill Moore	"Slim Jim" Presson	Bill Tuck
Bugs Geddy	Due Topping	Due Thrift
Champ Armistead	Gric Farmer	Pinkie James
Parson Swift	Due Rives	

### AMATEURS

Due Gordon	Dick Gayle	C. R. Hellin
Geo Zehner	Earl Zion	Nat Jennings
Henry Moncre	Ed. Tennis	

### HONORARY DEGREES

Red Williams	Super Liar
George Lane	Accomplished Liar
Dick Henley	Ananias of Ananias
Mutt Goslee	Ph.D. of Liars

Kent Early—"Lying as a Fine Art."





# Hunters Club

MOTTO: Caesar had his Brutus, and Virginia has its gamelaws.  
DRINK: Gunpowder. Colors: Gunpowder.  
PASTIME: Telling "fish stories."  
CHIEF ASSASSINS

C. H. Schepmoes	.....	Haruless Nimrod
Earl Zion	.....	Careless Gunner
T. R. Tucker	.....	Gun-Cleaner
Henry Moncure	.....	Rabbit Hunter
H. C. Parker	.....	Gun Expert

*Slain by Mistake*

B. W. Woods  
C. A. Scott  
John Warburton  
Vernon Guy  
Frank Early  
Herman Goslee  
Cunningham  
Hillard  
Seekford

*Killers of Time*

Schepmoes  
Henley  
Brooks  
Walker  
Gillians  
Nicholls  
Mitchell  
Hellin  
Rocklin

*Never-Hits*

Blakemore  
Northington  
Cooke  
Graves  
Gilliam  
J. Lane  
John Tyler  
Hubbard  
Ellis

*Men who Shoot Birds on the Ground*

Tennis  
West  
Spencer  
Copeland  
Maddox

*Snipe Hunter*  
Morris

*Degree Hunter*  
Brent



FLOATING PALACE: "Potomac."

MOTTO: "Catch that Monday boat!"

SONG: Sailing Down the Chesapeake Bay. FLOWER: Water-Lily

Captain	Jim Stephens
First-Mate	Hamilton Derieux
Second-Mate	Bill Brent
Pilot	Herman Goslee
Engineer	Charlie Major
Purser	O. W. French
Night-Watchman	Snipe Morris
Cook	Bill Garland

*Crew*  
 H. Parker  
 Lewis  
 F. Graves  
 Rowe  
 Gillions  
 Newton  
 Omohundro  
 Blakemore

*Deck-Hands*  
 Walker  
 Hammel  
 Settle  
 Sisson  
 Williams  
 Connollee  
 Foster

*Firemen*  
 Bristow  
 Thrift  
 Ellis  
 E. Stephens  
 Tolson

*Tug Boats*  
 "Lancaster"      "Middlesex"

*Passengers*  
 Farmville and Fredericksburg Normal Girls





## Ewell Club

MOTTO: "We have the long and the short of 'em."

FAVORITE DRINK: Whatever we can buy.

COLORS: Orange and Green.

PASTIME: California Jack.

### OFFICERS

B. W. Woods	President
W. L. McCormick	Vice-President
J. W. Hendrick	Secretary
C. L. Charlton	Treasurer
W. E. Zion	Sergeant-at-Arms
C. E. Crymes	Chaplain

### MEMBERS

Bristow	Green	Neblett
Brown	Guy	Nicholson
Connelly	Fedrick	Owens
Charlton	Holmes	Rives
Cheatham	Ingle	Sisson
Clary, R. A.	Johnson, R. J.	Smith
Clary, H. V.	Johnson, W. W.	Simms
Crymes	Joyner	Swift
Carpenter	Lassiter	Thrift
Campbell	Lee	White
Derieux	McCormick	Womack
Doss	Maffette	Walker, J. T.
Eley	Morris	Zion
Gilliam	Murry	





## Doctors Club

MOTTO: Dead men tell no tales.

DRINK: Ether.

FLOWER: Black Tulip.

PASSWORD: Ignorance.

How sleep the sick who sink to rest,  
By a family physician falsely dressed.

C. A. Muncaster	Quack Doctor
R. M. Newton	Ghost Manufacturer
J. M. Presson	Vivisector
I. W. Robertson	Infant Killer
W. L. McCormick	Undertaker
A. L. Mattox	Invariably operates in the wrong place
R. C. Taylor	All their patients die from their remedies
S. S. Dalhouse	Specialist on Cow Cholera
H. M. Walker	Horse Specialist

### Lesser Executioners

V. L. Guy  
 C. H. Schepmoes  
 W. S. Brent  
 E. R. James  
 Dr. Draper  
 B. B. Mitchell

### Baby Stranglers

B. O. Rocklin  
 C. C. Graves  
 H. S. Holmes  
 N. H. Jennings  
 M. H. Williams

### Scalpers

G. B. Zehmer  
 Kent Early  
 H. H. Edwards  
 W. D. Garland  
*Heart Specialist*  
 W. D. Harris





## William and Mary Rifle Club

Chartered November 1, 1915

*Member National Rifle Association*

Motto: To prepare for the defense of one's country is the highest type of patriotism.

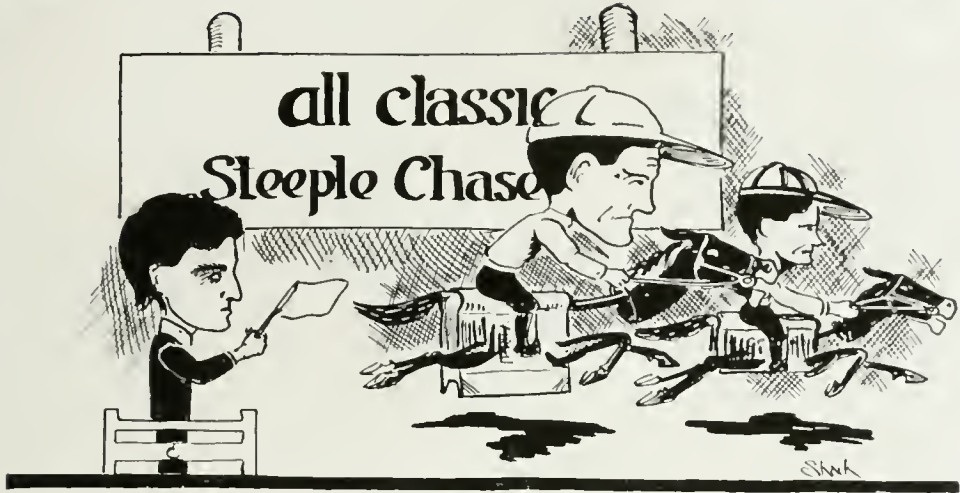
W. T. Woodson	.....	President
W. D. Harris	.....	Secretary
R. L. Combs	.....	Treasurer
B. O. Rocklin	.....	Captain

### MEMBERS

W. C. Ferguson	G. T. Caldwell	B. W. Woods
W. D. Harris	W. T. Woodson	M. M. Lewis
B. O. Rocklin	A. J. Mapp	J. W. Hedrick
A. C. Gordon	R. C. Taylor	J. F. Wilson
F. C. Graves	R. L. Combs	Prof. H. L. Bridges
V. M. Geddy	C. R. Heflin	Prof. Crawford
C. H. Schepmoes	W. E. Zion	Prof. Keeble
G. P. Green	S. H. Hubbard	D. M. Whitacre







Course: Begins at Porta and ends at Flacius Jump.

Judges: Professors Clark and Hubbard.      Purse: Three A credits.

*Mounts*

Ovid Flacius  
Cicero  
Ovid Flacius  
Virgil  
Beginner  
Horace  
Aeneas  
Agamemnon

*Jockeys*

Campbell Deane  
Frank Early  
Hiram Thorpe  
Campbell Deane  
"Hercules" Dalhouse  
"Polly" Stryker  
"Jawn" Combs  
"Jersey" Brown

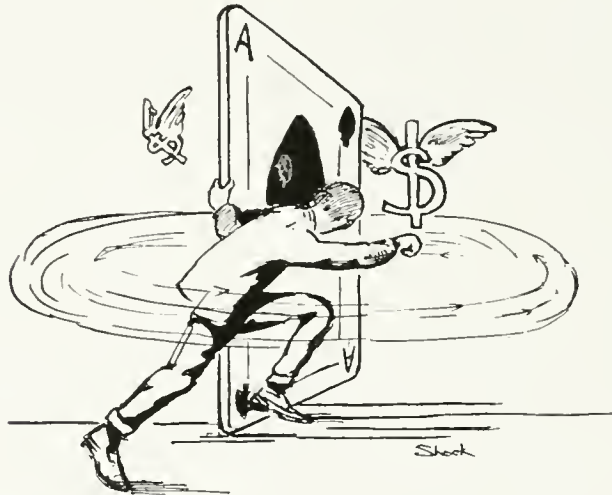
The All-Classic Steeple Chase, the Derby of William and Mary sport lovers, was run January 23, over an exceedingly heavy track and under very adverse weather conditions. Several of the jockeys were painfully overcramped, a regrettable fact that made consistent riding impossible, while some of the mounts showed the evil result of hasty training. The race was marred by a series of most distressing accidents; "Polly" Stryker being unseated and badly shaken at the Periphrastic Jump when his mount stumbled; young "Hercules," in spite of his earnest efforts, was hopelessly left at the post; and Campbell Deane met disaster when Virgil refused the Potential Jump. "Characteristic Subjunctive" Maffette, one of the spectators, in his enthusiasm, ran out into the track and was painfully injured by "vun swift kick" of the speeding Agamemnon.

The finish was hotly fought and brought the big crowd to their feet. Nathan, riding Ovid, was closely pressed at the wire by "Jersey" on Agamemnon, and "Jawn" Combs, who had had trouble with his mount at the Quis-Que-Quo Ditch, was only two lengths behind. Early on, Cicero failed to finish and his fate is problematical, although Hiram Thorpe reported seeing him thrown at the Ablative Absolute Jump.



The winner, Ovid, finished under the whips, but showed remarkable stamina for a four-year-old. Her trainer, Mr. Cramit Interlinear, of the Stone stables, is quoted as saying that the victory is due entirely to the excellent horsemanship of Nathan, who at all times, handled his steed with the skill and wisdom of long experience.

At the end of the race, the Judges called the jockeys to the stand and congratulated them upon their splendid showing. With tears in his eyes, Judge Clark declared that he was most strongly reminded of the palmy days when he, too, rode winners in similar races.



## Poker Club

*Editor's Note—We regret to announce that the list of members of this club is too long to be printed in the small space that is left on this page. Also the modesty of all of the members was so great that they refused to take the most humble office in this club.*





## The Tidewater Club

MOTTO: Where the tides come in, is happiness to be found.

COLORS: White and Blue. SONG: A Life on the Ocean Wave.

### OFFICERS

J. B. BENTLEY	Light-House Keeper
F. F. JENKINS	Clam-Digger
T. G. PULLEN	Oyster Planter
S. B. HALL	Wave-Collector
R. SISSON	Ship's Chaplain

#### *Hardcrabs*

F. D. Ribble  
 E. E. Stephens  
 F. F. Jenkins  
 R. Tomlinson  
 A. L. Lassiter  
 W. Hillard  
 D. Rowe  
 R. D. Ellis  
 H. V. Parker  
 J. F. Wilson  
 R. Sisson  
 G. L. Ferguson  
 F. Settle

#### *Oystermen*

L. Bridges  
 G. P. Wiley  
 G. B. Cooke  
 H. T. Smith  
 O. W. French  
 Cunningham  
 Byrd  
 W. Copeland  
 S. Morris  
 O. Bristow  
 R. Murphy  
 W. W. Johnson  
 Thrift

#### *Fishermen*

R. T. Johnson  
 R. Henley  
 Weisel  
 A. D. Parker  
 V. L. Guy  
 J. G. Bentley  
 C. Armistead  
 S. B. Hall  
 J. Lane  
 A. H. Goslee  
 T. G. Pullen  
 J. G. Warburton  
 R. N. Derring

#### *Tadpoles*

R. Johnson      J. M. Presson      A. Blakemore      Q. Nottingham



## Crossing Exams

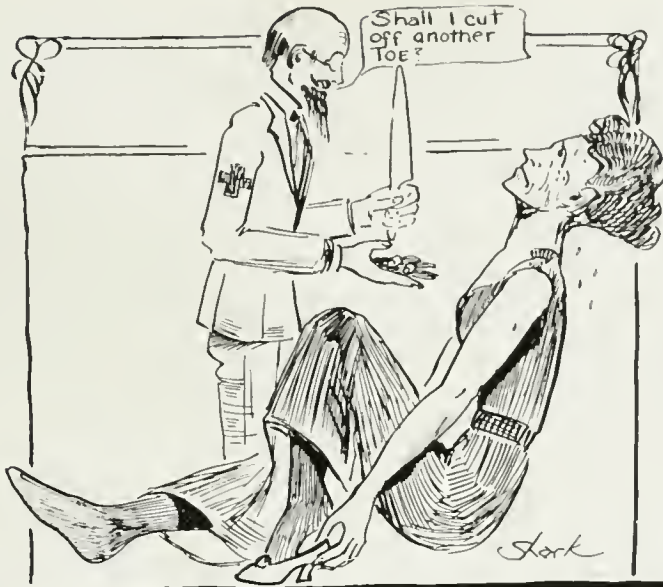
*NOTE—A duet sung with great effect at the burial of the First Term  
by Messrs. Harry Walker and Buddy Green.*

Eight-forty and the chapel bells,  
And one sad call for me,  
And ah! how sadly total ignorance dwells,  
On faces that I see.

Two-thirty and the evening bell,  
And after that, no more  
Of time is left than which to say Farewell,  
Exam is o'er!

Yet through from out my store of literal Greek,  
Mistakes bear me away.  
My name upon the board I hope to meet,  
The final grading day.





## Cinderella ~ Club

SIZES: 9 to 13.

Colors: Scarlet

Motto: As Cinderella wore the priceless shoe, so shall we, her dainty-footed admirers, by striving get on a ten shoe.

### MEMBERSHIP REQUIREMENTS

- 1.—All candidates must be unable to wear a 11 shoe.
- 2.—Every candidate must desire to wear a 6 shoe.
- 3.—All candidates must come prepared to lose several toes in the special course of treatment.

### NYMPH-FOOTED

Dr. Draper	.....	Court Physician
John Tyler	.....	Shoe Agent
"Giraffe" Stephens	.....	Dealer in Old Shoes
"Monk" Ellis	.....	Clubfooted

#### *Dainty Footed*

Jimmy Lane  
 F. F. Jenkins  
 S. W. Eason  
 Kent Early  
 Raymond Malfette  
 Dick Gayle  
 W. D. Harris

#### *Lesser Lights*

Shorty Hedrick  
 John Presson  
 George Zehmer  
 Robert Wallace  
 Wilbert Woodson  
 Prex Wilson

#### *Shoe String Agents*

Judy Swecker  
 S. B. Hall  
 Jim Early  
*Honorary Member*  
 Mr. Elmore Haskins





THE TRIBE IN WAR PAINT





# COLONIAL ECHO



## Brafferton Club

HOME: Fort Brafferton.

"May the spirit ever linger,  
In this wigwam of the blest."

Great Wirawonce	R. L. Combs
Wirawance of Bombasta	S. B. Hall
Wirawance of Figaros	P. N. Derring
Wirawance of Sycorax	I. W. Robertson
Cronochoe of Bombastic	J. H. Bentley
Cronochoe of Sycorax	B. H. Seckford
Oapiqueschiplotombasse	H. Wilson Thorpe

### *Braves*

H. L. Mitchell	E. R. James
C. R. Hellin	R. M. Newton
W. M. Tuck	J. M. Presson
W. D. Harris	G. P. Wiley
N. J. Webb	W. D. Garland
R. H. Edwards	M. H. Williams

### *Adopted Pale Faces*

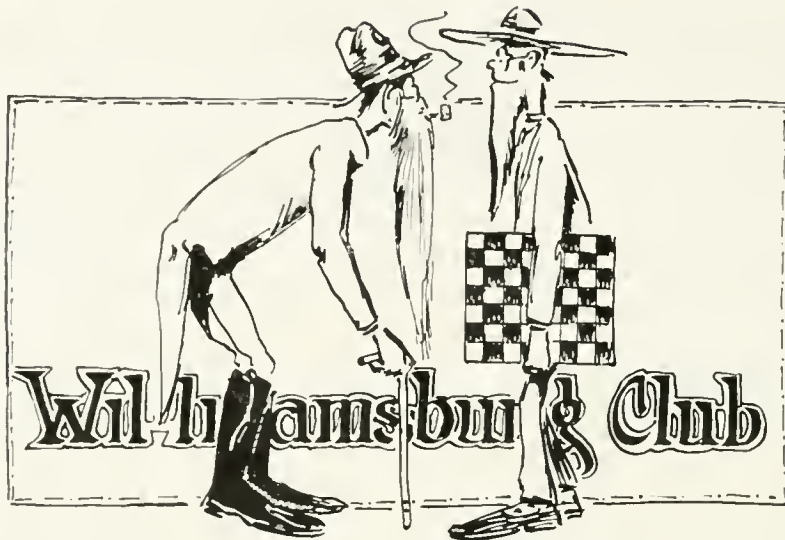
"Buggs" Geddy	Geo. B. Zehner
"Pete" James	"Billie" Winsbro

Gone to Happy Hunting Ground	H. W. Thorpe
Lost on marsh or captured by scouts	{ "Jim" Early T. G. Pullen "Red" Hall

### *Scalped*

Ewell Annex Braves	{ "Muf" Goslee "Mooks" Mattox "Fats" Wallace W. C. West
--------------------	--





## Williamsburg Club

- "Prentis" Moncre . . . . . Ex President during the Stone Age
- "Tin-can" Spencer . . . . . Governor during the Revolution
- "Bugs" Geddy . . . . . Keeper of records (Records destroyed by the Flood)
- "Dick" Henley, . . . . . Mule-Driver, before Fords were invented
- "Billy-Goat" Ferguson . . . . . Speaker of the House, 1619
- Howard Jones . . . . . Founder of the College

### ONLY BEEN HERE SINCE 1693

- "Dription" Warburton
- Lee Bridges
- Van Garrett
- "Judy" Brooks
- "Jimmie" Lane
- "Blizzard" Armistead

### FRATER IN FACULTATE

John Tyler











J. M. DRESSON  
BASEBALL MGR.



D. W. DRAPER  
COACH



A. C. GORDON  
TENNIS MGR.

# THE ATHLETIC COUNCIL



PROF. KEEBLE  
FACULTY REPRESENTATIVE



A. D. TUCKER  
PRESIDENT



C. A. SCOTT  
STUDENT REPRESENTATIVE



W. M. GRIMSLEY  
SECRETARY



G. B. ZEHMER  
VICE-PRES



W. B. TILLEY  
BASKETBALL MGR.



G. T. CALDWELL  
FOOTBALL MGR.



B. W. WOODS  
TRACK MGR.



## Athletics

The year of 1915-6 has seen the acquisition of one Championship Cup, and the birth of a growing optimism among faculty and undergraduates in regard to athletics at William and Mary. The Alumni have been aroused to lend their aid, a new spirit has arisen, and a firm base laid for future power in the various branches of sport.

Our football team gave promise of great power until the backfield was broken up by the severe injury of Joynes, the speedy quarterback, around whose aggressiveness the offensive of the team had been planned. His injury was followed by many shifts in an effort to balance the secondary defense and better a rather erratic line. Captain Wallace, shifted to quarterback, played a star game, as did Gale, the fullback, while Wilson proved to be the best center in the league. But as a whole, the season was not a success, and the only encouraging feature is the promise shown by some of the men who expect to return to the campus next fall.

Our Basketball Team was heavy, fast, and scrappy, and they were never headed in the race for the cup, losing only one of the six championship games, and making a runaway race of it. The stellar work of the Gayle and Zion was largely responsible for the high position of the team, while the sudden rise of "Polly" Stryker into the position of a star guard, was the surprise of the season. Hail to the Champions of 1916!

In baseball, our prospects are rather bright, with five letter men on hand and a crowd of new men of ability to select from. Captain Garnett is a team in himself when he is on the mound, and Zehner, his catcher, looks to be in his usual good shape. At the present time, adverse weather conditions have interfered seriously with practice, and the team finds itself on the eve of its Southern trip without the practice that is so necessary for their triumph. Only one member of the famous infield is on hand this year, but Addington, the assistant coach, is confident of building up a combination that will be able to hold its own in the coming Championship battles.

Tennis and track are receiving more attention than ever, as a result of the elevation of these sports to a higher rank, and the determined efforts of the Athletic Council to suitably reward the contestants in these branches of sport. The new tennis courts are in good shape, and there is no longer a congestion of players on one court. Manager Woods of the track team is working a goodly squad, and hopes to discover some point winners for the coming Meets. The manager recently won a place in the Church Hill Marathon in Richmond, against some of the best long distance men in the State.

Looking back over the athletic records of the year, we find much to be proud of, and more to praise, while we see in the defeats of the past, the baptism of fire that is fitting us for a year of victories in 1916-7.





CAPTAIN WALLACE

DR. DRAPER  
HEAD COACH

"DOC" MARROW  
ASST. COACH





FOOTBALL TEAM





## Football Team

Dr. D. W. Draper . . . . .	Coach
Doc Marrow . . . . .	Assistant Coach
G. T. Caldwell . . . . .	Manager
C. R. Heflin . . . . .	Captain

### VARSITY

Left End . . . . .	G. P. Green
Left Tackle . . . . .	K. Early
Left Guard . . . . .	H. M. Stryker
Center . . . . .	J. F. Wilson
Right Guard . . . . .	{G. W. Booth /E. E. A. Stephens
Right Tackle . . . . .	A. P. Robinson
Right End . . . . .	W. Copeland
Quarterback . . . . .	Wallace (Captain)
Right Halfback . . . . .	W. C. West
Left Halfback . . . . .	A. H. Goslee
Fullback . . . . .	R. B. Gayle
Substitutes . . . . .	Woods, Geddy, Lassiter, Owens, Doss, Maddox, Gordon

At a meeting of the monogram men after the close of the season, Robert Wallace was elected Captain of the 1916 eleven, as some slight reward for the plucky and brilliant game that he played at all times.





# COLONIAL ECHO









# COLONIAL ECHO



CHAMPIONSHIP BASEBALL TEAM





## Champions of the E. V. I. A. Association

Dr. D. W. Draper . . . . .	Head Coach
R. R. Addington . . . . .	Assistant Coach
J. M. Presson . . . . .	Manager
T. G. Pullen . . . . .	Assistant Manager
Frank M. Garnett . . . . .	Captain

### TEAM

Combs, Zehmer . . . . .	Catchers
Garnett, James . . . . .	Pitchers
M. H. Williams . . . . .	First Base
Stryker . . . . .	Second Base
Hellin . . . . .	Third Base
H. P. Williams . . . . .	Shortstop
Newton . . . . .	Left Field
Geddy . . . . .	Center Field
Moncure, Goslee . . . . .	Right Field

### *Substitutes*

Forehand, W. W. Johnson, Clay, Ellis, Wallace, E. R. James, Hall, Morris.





## Indians Capture Trophy

Aided by Garnett's pitching and fifteen safe blows, the William and Mary Indians won the baseball championship of the Eastern Virginia Intercollegiate Association yesterday afternoon at Broad Street Park, when they defeated the Randolph-Macon Yellow Jackets by the score of 7 to 2.

In the first inning the Indians got to Woodfin for one run. Heflin, the Indian third sacker, greeted Woodfin by hitting one of his offerings to the fence in left center for three bases. Woodfin seemed to find himself after that wallop, and the next two batters were retired on strikes. M. Williams, however, scored Heflin with a single, but Stryker was retired, on strikes. The Yellow Jackets drew blanks in their half of the first frame and in every inning thereafter with the exception of the ninth, when they scored two runs. William and Mary seemed to find the offerings of Woodfin to their liking, and scored six runs dur-

ing the remainder of the game, two counters each being registered in the second, fourth and sixth innings.

The game was featured mainly by the hitting of the Indians, with Goslee, the chief swatter of the day. Goslee got four hits out of the five trips to the plate. P. Williams and Heflin ran him a close second by getting three out of five times up. Chief Garnett demonstrated that he could hit some, as well as pitch, by getting two hits out of four rips. Although he was defeated, Woodfin, of the Yellow Jackets, pitched a good game and struck out eight batters.

This was the third time in the last six years that these teams have been tied for first honors, and each time the Indians have come out victorious.

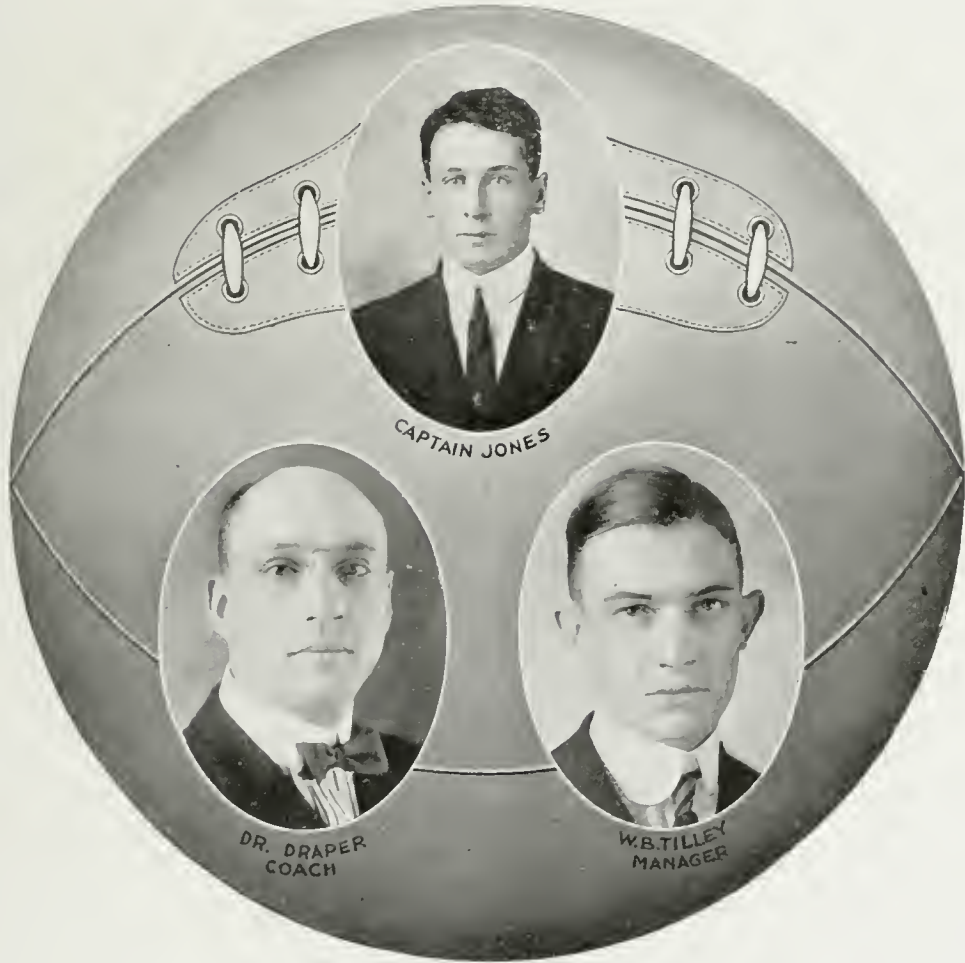
Score by innings: R.  
 Randolph-Macon ..... 0 0 0 0 0 0 0 2—2  
 William and Mary... 1 2 0 2 0 2 0 0—7





# COLONIAL ECHO

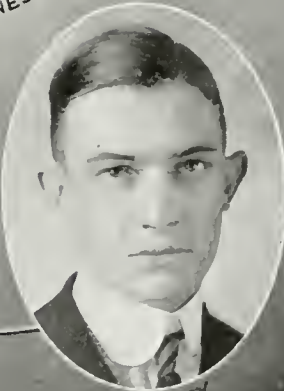
1 - 9 - 1 - 6



CAPTAIN JONES



DR. DRAPER  
COACH



W.B. TILLEY  
MANAGER





CHAMPIONSHIP BASKETBALL TEAM



## CHAMPIONS of the E. V. I. A. ASSOCIATION

Dr. D. W. Draper . . . . .	Coach
W. B. Tilley . . . . .	Manager
H. H. Jones . . . . .	Captain

### VARSITY

H. H. Jones . . . . .	Right Forward
W. E. Zion . . . . .	Left Forward
R. B. Gayle . . . . .	Center
H. M. Stryker . . . . .	Right Guard
G. B. Zehmer } . . . . .	Left Guard
I. W. Robertson }	
Geddy, Williams, Wallace, Maddox . . . . .	Substitutes

### CHAMPIONSHIP SCORES

W. M. C. . . . .38	R. C. . . . .33
W. M. C. . . . .33	R. C. . . . .22
W. M. C. . . . .24	R. M. C. . . . .22
W. M. C. . . . .25	H. S. C. . . . .15
W. M. C. . . . .41	H. S. C. . . . .30
W. M. C. . . . .23	R. M. C. . . . .31





TENNIS CANDIDATES—(Feeling Unwell)





## Tennis Candidates

On the first day of play of the Inter-Collegiate Tournament which took place on the courts of the Richmond Country Club, the William and Mary doubles team vanquished the Richmond College team, but lost the title to Hampden Sidney on the next day in the final contest, May 13, 1916.

A. C. Gordon, Jr. . . . . Manager

D. W. Draper . . . . . Coach

### CANDIDATES

W. E. McCormick	G. L. Ferguson
W. C. Ferguson	E. R. James
Hamilton Derieux	B. H. Seckford
G. T. Caldwell	W. L. Mitchell
A. K. Early	C. E. Williams
A. H. Connollee	W. W. Winsbro
F. F. Jenkins	F. B. Tolson
B. W. Woods	J. P. Ingle
J. M. Presson	S. R. Weisel
E. E. Stephens	J. J. Swecker
W. D. Harris	T. D. Foster
S. N. Dalhouse	C. L. Charlton
F. D. Ribble	W. D. Harris
H. M. Walker	J. L. Byrd
J. F. Joyner	R. A. Clary
H. C. Parker	M. M. Smith
I. W. Robertson	D. P. Lohr

### DOUBLES TEAM

Gordon and Derieux

### SINGLES

F. B. Tolson





# COLONIAL ECHO



TRACK TEAM





## The Track Team

Dr. D. W. Draper	. . . . .	Coach
B. W. Woods	. . . . .	Manager
W. J. Hedrick	. . . . .	Captain

William M. Tuck  
 A. Herman Goslee  
 H. H. Edwards  
 E. R. James  
 D. P. Lohr  
 J. C. Cooke  
 W. H. Cooke  
 W. D. Garland  
 W. W. Forehand  
 C. Reeves  
 B. W. Woods  
 J. W. Hedrick  
 H. H. Jones  
 R. D. Ellis





HISTORIC WILLIAMSBURG HOMES





Academy





## The Normal Academy

### OFFICERS OF INSTRUCTION AND ADMINISTRATION

HERBERT L. BRIDGES, A. B.,

Registrar of the College.

LEVIN WINDER LANE, JR.,

Treasurer of the College

G. OSCAR FERGUSON, JR., M. A.,

Principal of the Academy.

Education.

WILLIAM ASHBY BLONTON, A. B.,

English, German, French.

SAMUEL HILDRETH HUBBARD, A. B.,

Latin, History, Civics.

RICHARD McLEOD CRAWFORD, A. M.,

Drawing and Manual Arts.

JOHN TYLER, A. M.,

Mathematics.

PERCY LESIS WITCHLEY, A. M.,

Chemistry and Agriculture.

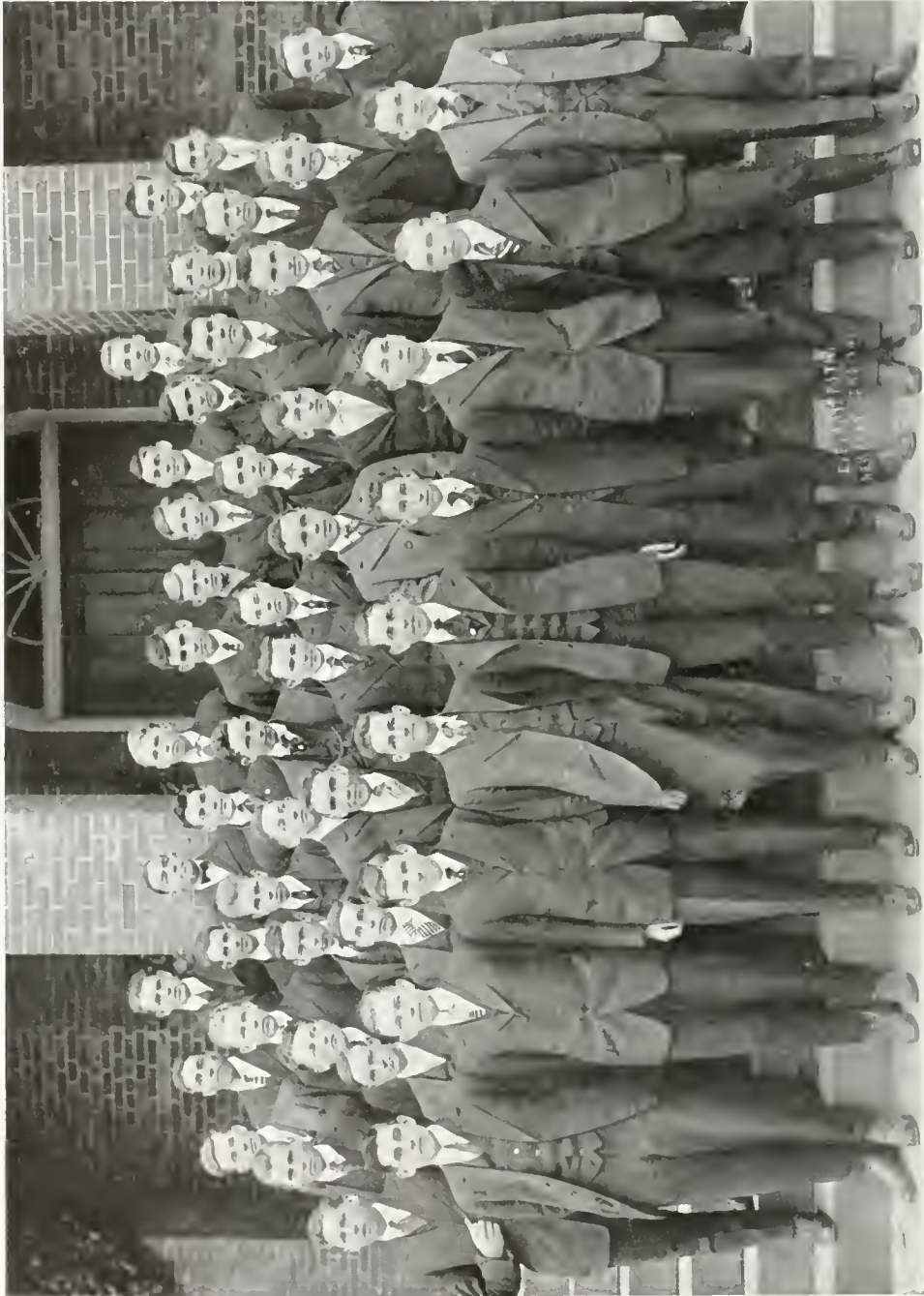
CHARLES HARMON SCHEPMOES, A. M.,

Physics and Botany.

HARVEY PAGE WILLIAMS,

Assistant in Mathematics.





ACADEMY STUDENT BODY







## Academy Student Body

### OFFICERS

MUNFORD ELLIS	President
V. STEADMAN	Vice-President
R. TOMLINSON	Secretary
R. MURPHY	Treasurer
E.S. BURFORD	Historian

Motto: Give to the world the best you have.

Colors: White and Orange.

### MEMBERS

M. A. Acree	S. C. Gray	W. F. Ozlin
M. M. Armory	W. T. Green	M. P. Omohndro
C. C. Armistead	F. M. Gunner	S. S. P. Patterson
C. M. Barber	S. E. Gunn	H. Perry
C. B. Barnes	J. L. Holmes	A. M. Renick
H. E. Bethel	O. F. Hornsby	D. C. Renick
R. A. Brashaw	E. D. Hudson	T. H. Richards
S. W. Brewer	W. R. Hudson	J. B. Rowe
H. L. Bridges, Jr.	W. B. Hunter	H. W. Sanford
M. Bircher	C. F. Johnson	L. S. Saunders
E. S. Burford	J. R. Lane	J. C. Slater
H. B. Burt	E. Lawrence	W. B. Sledd
G. H. Carson	R. M. Lemon	H. C. Sommers
C. Z. Chappell	T. P. Leonard	V. Steadman
E. E. Connor	R. E. Lohr	M. J. Swift
J. D. Crigler	E. L. Mattox	R. Tomlinson
L. B. Dougherty	T. S. McKenzie	C. E. Topping
M. Ellis	J. D. Moore	J. S. Tribble
J. W. Fisher	R. Murphy	G. S. Via
W. E. Garber	W. E. Nichols	G. B. Woolfolk
V. Garrett	G. M. Nicholson	F. E. Wornom





SENIOR CLASS



## Academy Senior Class

MOTTO: We pull together.

COLORS: Orange and Blue.

### YELL

You can't keep us down,  
You can't keep us down!  
For into College we are bound,  
When nineteen sixteen rolls around.

### OFFICERS

H. C. SOMERS	President
E. S. BURFORD	Vice-President
E. L. MATTOX	Treasurer
R. MURPHY	Secretary
J. F. JOHNSON	Historian

### MEMBERS

C. C. Armistead	R. E. Lohr
R. A. Brayshaw	E. L. Mattox
S. W. Brewer	R. Murphy
E. S. Burford	G. M. Nicholson
H. B. Burt	M. P. Omohundro
G. H. Carson	Ozlin
E. E. Conner	S. S. P. Patterson
J. D. Crigler	J. H. Richards
L. B. Dougherty	J. B. Rowe
M. Ellis	H. W. Sanford
W. E. Garber	L. S. Saunders
J. L. Holmes	W. B. Sledd
C. T. Johnson	H. C. Somers
J. T. Johnson	V. Steadman
J. R. Lane	R. Toulinson
R. M. Lane	C. E. Topping
	J. S. Tribble





### Jefferson Literary Society

OFFICERS—*First Term*

G. M. NICHOLSON	.	.	.	.	.	.	President
R. MURPHY	.	.	.	.	.	.	Vice-President
J. F. JOHNSON	.	.	.	.	.	.	Secretary
VANCE STEADMAN	.	.	.	.	.	.	Treasurer
E. S. BURFORD	.	.	.	.	.	.	Literary Critic
H. C. SOMERS	.	.	.	.	.	.	Parliamentary Critic
T. P. LEONARD	.	.	.	.	.	.	Chaplain
W. B. HUNTER	.	.	.	.	.	.	Sergeant-at-Arms

OFFICERS—*Second Term*

E. S. BURFORD	.	.	.	.	.	.	President
V. STEADMAN	.	.	.	.	.	.	Vice-President
S. E. GUNN	.	.	.	.	.	.	Secretary
H. C. SOMERS	.	.	.	.	.	.	Treasurer
G. M. NICHOLSON	.	.	.	.	.	.	Parliamentary Critic
J. F. JOHNSON	.	.	.	.	.	.	Literary Critic
C. M. BARBER	.	.	.	.	.	.	Chaplain
W. L. GREEN	.	.	.	.	.	.	Sergeant-at-Arms

MEMBERS

E. S. Burford	E. D. Hudson	V. Steadman
C. M. Barber	W. R. Hudson	L. S. Saunders
E. E. Conner	J. L. Holmes	W. B. Zeers
L. B. Dougherty	R. Murphy	H. W. Saunders
S. E. Gunn	G. M. Nicholson	H. W. Sanford
W. E. Garber	W. J. Ozlin	W. B. Sledd
W. T. Green	H. Perry	H. C. Somers
W. B. Hunter	A. M. Renick	



## Academy History

The history of the Academy is a glorious chronicle of still more glorious deeds. From the standpoint of scholastic achievements, the session of 1915-16 has been most successful; the student body coming through the cross-fire of mid-term exams with colors flying, proving invincible even in the face of "Pap's" English and "John's" Math. Curling has become an art, and Nicholson, Johnson, Acree and Somers are its devotees.

While work in the Jefferson has not been up to par, a great many changes are being made and we predict that finals will find the society in its old time form.

But as Prof. Schepmoes would say, "Much study is a weariness of the flesh," so let us turn to a more pleasant topic—athletics. Through the untiring efforts of Coach Hubbard and under his masterly hand, the teams this year have proved themselves to be the best ever produced in the Academy. The football team ably proved its claim to distinction. The backfield, led by Capt. Somers, was a winning combination of speed, weight and power. "Monk" Ellis developed into a phenomenon, playing behind a powerful line, that had for its keystone, Joe Garber, the massive center. This eleven dropped only one game, and played high class football throughout the season.

The basketball team hardly developed to its maximum efficiency, owing to lack of veterans and limited gymnasium facilities, but it made up in "pep" all that was lacking in skill. Also, the memory of the Newport News game is pleasant to us.

With a wealth of new material on hand, it appears that our baseball team will hold its own with the best teams that appear on the schedule. Captain "Monk" Ellis, a wonderful batter and pitcher, is not at all discouraged at the outlook, and Coach Hubbard is working faithfully to produce a fast, well-balanced nine.

The introduction of frequent hare and hound hunts has done a great deal to revive the interest in track and field activity, and the number of men who have reported makes it practically certain that the Academy will make a creditable showing in the coming Interscholastic Meet to be held on Cary Field.

The writer feels that the task of Historian, while pleasant, is beyond his humble ability and regrets that he cannot do full justice to his splendid subject. Men of 1916, you are the fortunate inheritors of a rich legacy in the opportunity that was yours to participate in the stirring events of the past years. Let us work together, to end the year in a way that will reflect honor upon us and our school!

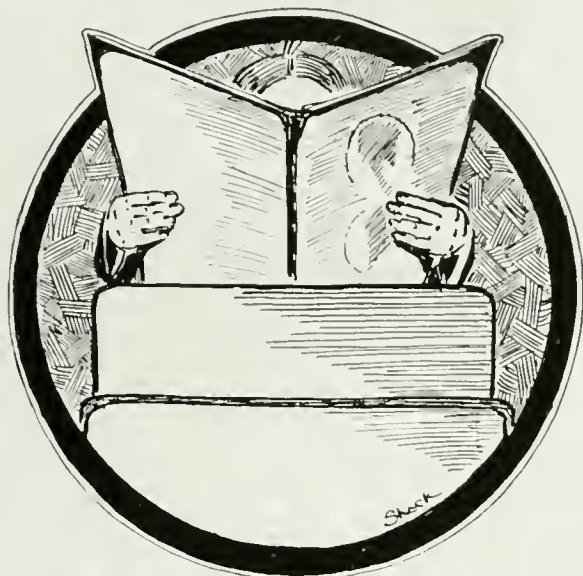




### Academy Executive Committee

MUNFORD ELLIS	. . . . .	President
VANCE STEADMAN	. . . . .	Vice-President
R. MURPHY	. . . . .	Secretary
R. TOMLINSON	. . . . .	Treasurer
E. S. BURFORD	. . . . .	Historian





## Study Hall Club

PURPOSE: Cozening the Faculty

FAVORITE PASTIME: Reading Dime Novels and doping out plays

ELECTING COMMITTEE: The Faculty

### *Members of Distinction*

Burt

Lemon

### *Promising Candidates for a Regular Position*

Nichols

Sanford

Via

Swift

Woolfolk

Doughtery

### *Lesser Satelites*

Sledd

Burcher

Amory

Carson

Fisher

Johnson

Tribble

Gray

Lohr

Hornsby

### *These also have Served*

Murphy

Burford

Stedman

Garber

Somers

### *Keeper of the Keys*

George Baskerville Zehmer





THE ACADEMY AT HOME







# COLONIAL ECHO



## Taliaferro Club

### OFFICERS

E. L. MADDOX	President
S. BURFORD	Vice-President
R. M. LEMON	Secretary
A. M. RENICK	Treasurer
T. P. LEONARD	Chaplain
WILLIAM SLEDD	Janitor

MOTTO: Pull against each other. COLOR: Rainbow

### YELL:

Water drops! Water drops!  
 Torrents and showers,  
 Falling from third floor,  
 After midnight hours.

FLOWER: Two-lips

PASTIME: Conspiring

DRINK: Sky Juice

SONG: We want to go back to the Farm

### MEMBERS

M. A. Acree	W. B. Hunter
M. M. Amory	J. L. Harvey
M. C. Burcher	J. F. Johnson
S. W. Brewer	C. T. Johnson
C. M. Barber	T. P. Leonard
E. S. Burford	R. M. Lemon
G. H. Carson	E. L. Mattox
J. D. Crigle	R. M. Murphy
E. E. Conner	W. W. Nicholls
L. B. Dougherty	N. P. Omohundro
S. N. Dalhouse	H. Perry
J. W. Fisher	A. M. Renick
W. E. Garber	V. Steadman
E. L. Gillions	H. W. Sanford
S. E. Green	W. B. Sledd
Z. C. Gray	H. C. Somers
Prof. Hubbard	C. E. Topping
E. D. Hudson	G. S. Via
W. B. Hudson	F. E. Wornom





# COLONIAL ECHO



## Academy Echo Election

Loafer . . . . .	W. B. Sledd
Best athlete . . . . .	"Monk" Ellis
Most awkward "Duc" . . . . .	E. E. Conner
Best trained "Duc" . . . . .	Hilton Perry
Hermit . . . . .	C. E. Topping
Grind . . . . .	G. M. Nicholson
Runt . . . . .	Van Garrett
Best looking man . . . . .	A. M. Renick
"Calico" sport . . . . .	D. C. Renick
"Curler" . . . . .	G. M. Nicholson
Greenest man . . . . .	G. S. Via
Nuisance . . . . .	W. B. Sledd
Tobacco bum . . . . .	W. E. Garber
Best orator . . . . .	E. S. Burford
Best baseball player . . . . .	"Monk" Ellis
Most refined man . . . . .	C. E. Barber
Laziest man . . . . .	L. B. Dougherty
"Duc" Tamer . . . . .	R. Tomlinson
Most popular man . . . . .	V. Steadman
Best football player . . . . .	"Monk" Ellis
Best all-around student . . . . .	E. S. Burford
"It" . . . . .	"Mike" Murphy
Bull Slinger . . . . .	E. L. Mattox
Ugliest man . . . . .	W. B. Sledd
Best professor . . . . .	S. H. Hubbard





# Academy Athletics





### Academy Athletic Council

H. C. SOMERS . . . . .	President
J. F. JOHNSON . . . . .	Vice-President
C. Z. CHAPPELL . . . . .	Secretary-Treasurer
W. M. A. BLOXTON . . . . .	Faculty Representative
S. H. HUBBARD . . . . .	Coach
V. STEADMAN . . . . .	Baseball Manager
M. ELLIS . . . . .	Basketball Manager
R. TOMLINSON . . . . .	Football Manager





## Academy Monogram Club

### OFFICERS

E. S. BURFORD	President
W. E. GARBER	Vice-President
G. H. CARSON	Secretary
J. D. CRIGLER	Treasurer

### MEMBERS

C. C. Armistead	W. E. Garber
M. M. Amory	R. M. Lemon
E. S. Burford	E. L. Mattox
G. H. Carson	R. Murphy
C. Z. Chappell	J. C. Slater
E. E. Conner	H. C. Somers
J. D. Crigler	H. Tomlinson
M. Ellis	B. G. Woolfolk





ACADEMY FOOTBALL TEAM



## Academy Football Team

R. Tomlinson	Manager
H. C. Somers	Captain
S. H. Hubbard	Coach
G. B. Woolfolk	Left End
E. S. Burford	Left Tackle
E. E. Connor	Left Guard
W. E. Garber	Center
C. Z. Chappell	Right Guard
E. L. Mattox	Right Tackle
J. D. Crigler	Right End
R. Murphy	Quarterback
G. H. Carson	Right Halfback
H. C. Somers	Left Halfback
M. Ellis	Fullback

### SUBSTITUTES

J. C. Slater      R. Tomlinson      C. C. Armistead





ACADEMY BASEBALL TEAM





## Academy Baseball Team, 1916

Mumford Ellis	Captain
S. H. Hubbard	Coach
V. Stedman	Manager
Van Garrett	Assistant Manager

### TEAM

Mumford Ellis	Pitcher
Garber	Catcher
Crigler	First Base
Murphy	Second Base
Carson	Short Stop
Rowe	Third Base
Nichols } Gruver }	Left Field
Mattox } Garrett }	Center Field
Burford	Right Field





## Academy Basketball Team

Mumford Ellis . . . . . Manager and Captain  
 S. H. Hubbard . . . . . Coach

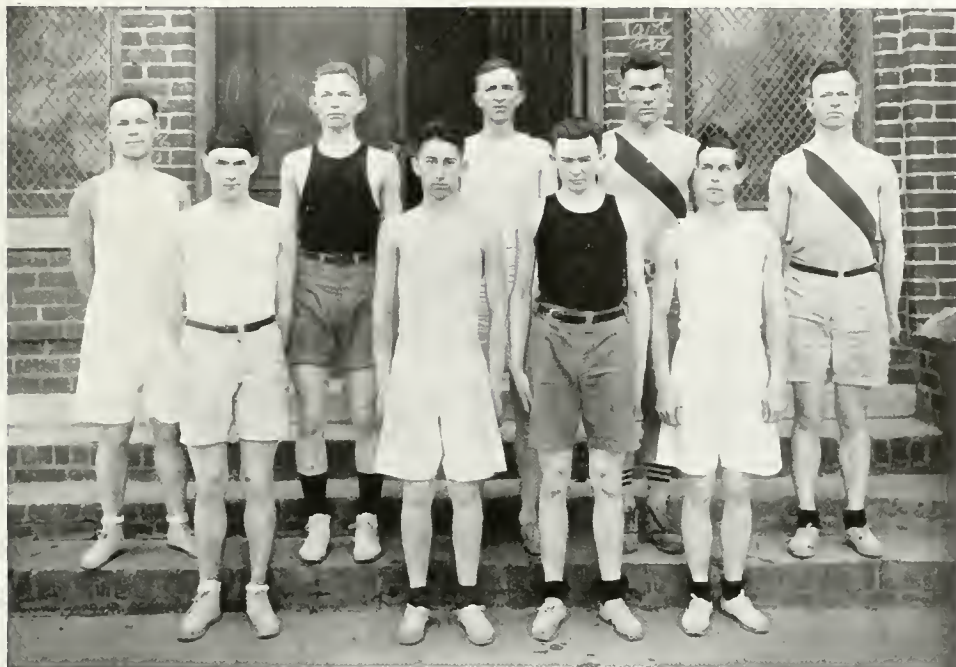
### TEAM

M. Ellis . . . . . Right Forward  
 J. D. Crigler . . . . . Left Forward  
 M. M. Amory . . . . . Right Guard  
 R. Murphy . . . . . Left Guard  
 E. C. Burford . . . . . Center

### SUBSTITUTES

Carson      Armistead      Garber





## Academy Track Team

Prof. Hubbard

Coach

### MEMBERS

M. A. Acree

J. F. Johnson

C. M. Barber

F. P. Leonard

J. D. Crigler

S. H. Perry

F. M. Gruver

V. Steadman

S. E. Gunn

V. Steadman

E. D. Hudson

F. E. Wornom





## Song

See, Love, the day is dying,  
Weary and still;  
Right like a lone sad mourner comes sighing  
Over the hill;  
Now moves soft-footed through the sky,  
And lights the stars to their watch close by.

Hark, 'tis the night-bird singing,  
Mournfully sweet;  
Up from the dusky garden winging,  
Now song-mad fleet  
He shrills his sorrow to the sky,  
And weeps that day should ever die.

Martin Feinstein.









# COLONIAL ECHO



## Garner & Company

Newport News, Va.

Hatters, Clothiers,  
Haberdashers,

Tailors—For Men and  
Little Men.

*The Home of Stein-Block Clothes*

DON'T FORGET

## R. T. Casey & Sons

Only One Block East of W. & M.  
College

When in need of

Hats, Shoes, Clothing  
& Gents' Furnishings

Sole Agents for Korreck Shape  
Shoes for Men, \$3.50, \$5.00

## The Norfolk National Bank

NORFOLK, VIRGINIA

Organized 1885

*The oldest National Bank in  
Eastern Virginia*

Capital .....\$1,000,000  
Surplus and Profit .....\$825,000

Caldwell Hardy, President  
A. B. Schwarzkopf, Vice-Pres.  
W. A. Godwin, Cashier

1860

1916

Fifty-sixth year

## J. Chambers Bristow

*General Agent*

Home Life Insurance Co.  
of New York

1012-13 Mutual Building

Richmond, Va.

Students desiring to enter the  
business during vacation or per-  
manently, please write up for par-  
ticulars.



Largest Stock in the South.  
High Grade Marble and Granite.

Special Designs. Best Work.

Lowest Prices.

## The Couper Marble Works

264 Bank St.

NORFOLK, VIRGINIA

(Established 67 Years)

## The Merchants National Bank

OF HAMPTON

### Hampton's Leading National Bank

Special Attention to Deposits  
Received by Mail

*4 Per Cent. on Savings Accounts*

H. R. Booker.....President

Robt. I. Mason....Vice-President

L. M. Von Schilling.....Cashier

The DuPonts are Making  
Williamsburg, Virginia  
a New City.

Fortunes Will be Made  
Here!

We have had over twenty years  
of successful experience in  
the Real Estate business.

Let us tell you how to make  
some money here.

**Powell Trust Company**  
INC.

Williamsburg, Virginia

When you visit Newport News  
visit

### The Delmont Restaurant

Quick Service.

Polite Attention.

Reasonable Prices.

Anything the Market Affords.

We Serve in Up-to-Date Style.

2503 WASHINGTON AVE.

## J. E. Hicks

### Dry Goods and Notions

WILLIAMSBURG, VA.

Incorporated 1832

# The Virginia Fire and Marine Insurance Co.

OF RICHMOND, VA.

Assets .....\$1,761,020.00  
Capital ..... 250,000.00  
Net Surplus ..... 668,198.00  
Surplus to Policy-Holders..... 918,198.00

WM. H. PALMER, *President*                      W. H. MCCARTHY, *Secretary*  
E. B. ADDISON, *Vice-President*

### DIRECTORS

Wm. H. Palmer              A. L. Cabel              J. Jordan Leake  
E. B. Addison              Wm. H. Palmer, Jr.

# SHERWOOD INN

OLD POINT COMFORT, VIRGINIA

SHERWOOD INN, homelike and beautifully located, is open all the year. Offers the best facilities in surroundings and climatic conditions to those seeking rest, pleasure and recreation. Recently enlarged, and now accommodates 300 guests comfortably. Private baths, rooms single and en suite. The hotel is heated by steam, has electric lights, elevators, bells, billiard and pool parlors, etc., with first-class service in every respect, also telegraph and long-distance telephone connection. It has just been thoroughly remodeled, renovated and refurnished, and offers a pleasant, attractive and comfortable home to the public seeking health or pleasure. The rates are moderate and the table first class, leaving nothing to be desired. Send for Booklet.

**SPECIAL RATES BY WEEK OR MONTH**

City and Suburban Property  
Farms and Timber Lands

*Prices Right      Square Dealing*

## F. H. Ball & Co.

Williamsburg, Va.

Investments,  
Real Estate,  
Farm Lands and  
City Property.

Stocks and Bonds,  
Sub-Divisions  
and Promotions  
a Specialty.

## Power City Investment Co.

INCORPORATED

ALBERMARLE, N. C.

Branch Office: Williamsburg, Va.

## College and Fraternity Jewelry

We make a specialty of manufacturing fine Platinum, Gold, Silver and Bronze Class Pins, Rings, Medals and Jewels. College and Society Seals mounted on wood for wall decoration.

Exclusive designs in Fine Gold and Gem Art Jewelry, Sterling Silverware, Art Goods and Cut Glass for Wedding and Anniversary Gifts, Ecclesiastical Wares, Fine Stationery.

If you desire something special in the jewelry line write for estimates and designs.

### C. LUMSDEN & SON

*Jewelers to the Southern People*

Catalogue upon application

731 E. Main Street

RICHMOND, VA.

Compliments of

# WHITTET & SHEPPERSON

## Printers and Engravers

RICHMOND, VA.

### WHY WORRY

Let us loan your money on Richmond City Real Estate, first mortgage, to pay you 6%. We handle any amount from \$250 to \$10,000.

*Correspondence solicited*

### Pollard & Bagby

RICHMOND, VA.

Notary Public Seal, River Farms on the York, James and Chickahominy.

Write for Descriptions.

### W., Walker Ware

*Real Estate and Insurance*

Farms, Timbered Lands, City Property of all Descriptions.

Manufacturing Sites  
and River Fronts

WILLIAMSBURG, VA.

# The William Byrd Press, Inc.

Printing, Embossing  
Designing, Engraving

COLLEGE PRINTING A SPECIALTY

Ten South Fourteenth Street  
RICHMOND, VIRGINIA

MADISON 3461

## LANE & CHRISTIAN

SUITS TO ORDER AND IN  
STOCK

Hats, Caps and Shoes

Shirts, Scarfs and Underwear

*And in fact Everything for  
College Men*

## COLONIAL INN

Williamsburg, Virginia

DUKE OF GLOUCESTER STREET

Located in center of the city. Pure air. Good artesian water. Telegraph, telephone and express accommodations in the office. The parlors of the Inn are filled with antiques. Good, plain Virginia cooking. Special attention and moderate rates to the parents of students visiting the town. Special prices to athletic organizations. Come and see the wonders of the world. Address

J. B. C. SPENCER,  
Proprietor and Manager

## DR. C. H. DAVIS

DENTIST

Peninsula Bank Building  
Williamsburg, Va.

GO TO—

## J. B. PADGETT

When in Need of Cleaning, Press-  
ing and Repairing

*Clothes called for and delivered*

## Norman Jones' RESTAURANT

Quick Meals at All Hours  
*Ladies' and Gentlemen's Private  
Dining Room*

PATRONAGE SOLICITED

---

## NEW YORK RESTAURANT

European Style. Quick Lunch.  
Good Country Food. Up-  
to-Date Equipment.  
*Satisfaction Guaranteed.  
Give us a trial.*

G. CUSEAS AND S. MOSELIAS  
Managers

*The Place where Your Dollars  
will Grow.*

# DELTA PARK

Adjoining Du Pont Property.  
The Ideal Business Subdivision.  
Near Williamsburg, Va.

C. RIDGWAY, Agent

RICHMOND AND WILLIAMSBURG

## Morgan G. Thalhimer

SALES RENTALS LOANS

First National Bank Bldg.  
RICHMOND, VA.

Williamsburg Office  
Old Williamsburg Hotel

W. R. L. SMITH, Jr., Mgr.

## Bolton - Clarke & Pratt

INCORPORATED

CIVIL ENGINEERS  
AND SURVEYORS

**Preliminary Investigations.**

*Designs and Supervision of  
Construction of*

Railroad and Trolley Lines, Plain  
and Reinforced Concrete,  
Drainage Systems.

City Planning, Water Power  
Development.

737 E. Main Street  
Phone Mad. 6087

# Hotel Warwick

*The Ideal Hotel*



NEWPORT NEWS, VA.

# Williamsburg Drug Co.



There is where we get our drugs;  
there is where we get our station-  
ery, and there is where we drink  
our soda water, Coca-Cola and all  
latest drinks of the fountain.

AGENTS FOR MONTAUK  
CREAM

*Your Trade Solicited*

---

## The J. W. Rowe Co. INC.

HAMPTON, VA.

*Wholesale Fancy and Staple  
Groceries*

AGENTS:

White House Coffee and Tea.  
Gold Coin Flour.  
Cluck's Canned Vegetables and  
Fruits

---

## See Royal and See Better

133 28th Street.

NEWPORT NEWS, VA.

---

## THE Norfolk Bank

FOR

## Savings and Trusts

240 Main Street

Capital .....\$100,000  
Surplus .....\$200,000

*4% interest on Savings Accounts*

Caldwell Hardy, President  
C. W. Grandy, Jr., Vice-Pres.  
W. W. Vicar, Cashier  
A. W. Brock, Asst. Cashier



## Fortress Monroe, Virginia

*OPEN ALL YEAR*

**The Seashore Resort of America  
Interesting, Historic Surroundings**

A magnificent Hotel, gay with pleasure-loving people; sports and social diversions made brilliant by Army and Navy participants

The rarest of sea-foods and an exceptional cuisine make a visit a long remembered pleasure

Accessible and charming in environment, yet far away from the hum of everyday life

**The Medicinal Baths Department, Complete in Every Detail**

Every Bath and Treatment, as given at European Spas, with the additional advantage of sea-breezes and sea-bathing

For interesting, illustrated booklets, apply at Tourist Bureaus or Transportation Offices, or address,

**GEO. F. ADAMS, Mgr., BOX 3001 FORTRESS MONROE, VIRGINIA**

New York  
Office:

Bertha  
Ruffner  
Hotel  
Bureau  
McAlpin  
Hotel



"BOTH ARMS OF THE SERVICE" AT OLD POINT COMFORT

Established 1872

Excelled by None

## E. A. Wright Bank Note Co.

ENGRAVERS—PRINTERS—STATIONERS

Offices and Factory:

Broad and Huntingdon Sts.

General Store:

1218 Walnut St.

PHILADELPHIA, PENNA.

*Manufacturer of*

CLASS AND SOCIETY PINS, MEDALS

Commencement Invitations

Calling Cards

Dance Programs

Menus

Stationery

Year Book Inserts

Invitations

Leather Souvenirs

Photogravures

# PHOTOGRAPHS

The Best at Reasonable Prices

Picture framing, copying, enlarging, amateur finishing,  
blue printing, etc.

We furnished the photographs for this issue of the  
"Colonial Echo."

Special rates to colleges, schools, churches, etc.

*Write or telephone us for rates.*

Telephones 247-W or 879-J

## E. P. GRIFFITH

PHOTOGRAPHER

No. 2602 Washington Avenue.

NEWPORT NEWS, VA.



# Murphy's Hotel and Annex

Richmond, Virginia

---

## Headquarters for College Men

---

This new Hotel is now open to the public, and it is the largest and most modern house south of New York. This house is located on direct car lines to all railroad stations. And it is famous for its excellent Sun-bridge and Mezzanine Parlors.

---

*European Plan \$1.00 Per Day Up*

# The Peninsula Bank

WILLIAMSBURG, VIRGINIA

Robt. L. Spencer.....President  
E. W. Warburton .....Vice-President  
S. L. Graham.....Cashier  
J. S. Meanly.....Assistant Cashier

---

*Students' Accounts Respectfully Solicited*

---

All business entrusted to us receives prompt  
and careful attention

MAKE OUR BANK YOUR BANK

COLLEGE OF  
**William and Mary**  
Williamsburg, Virginia

A College, modern in equipment, and strong in educational efficiency, yet the oldest in the South and the equal of any institution in America in richness of traditions. Healthfully situated on the Peninsula on the Chesapeake and Ohio Railway, it is within easy distance of Norfolk, Newport News, and Richmond. It offers:

I. Full Academic Courses leading to A. B., B. S., and M. A. degrees.

II. Courses in Education for the preparation of teachers and superintendents for the public school system. Scholarships representing about one-fourth of the expenses may be secured through the school superintendent by students preparing to teach.

Expenses moderate.

*WRITE FOR CATALOGUE*

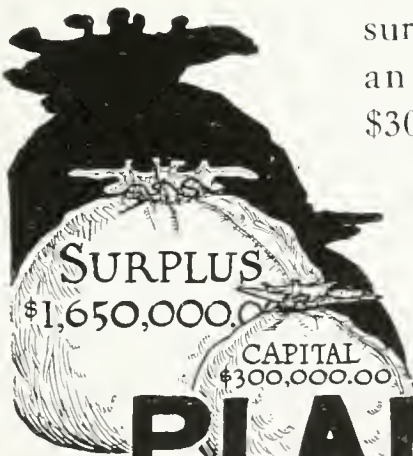
---

H. L. BRIDGES, Registrar

# The Bank For Money - Makers!

Make this your bank, money-makers and money-savers. Every day your funds are *Idle* represents a *Loss* as *Real* as the paydays you *Miss*. Put your *Earnings* here where they pay 3 per cent *Compound Interest*.

We are *Money-Makers* ourselves---as *Proof*, look at the tremendous surplus of \$1,650,000 from an original capital of \$300,000.



Write today for our booklet "Banking By Mail," chock full of valuable information. Tells you just what you want to know. A postal brings it.

## PLANTERS NATIONAL BANK

12th and Main Streets

Richmond, Va.

NELSON S. GROOM, Pres.

F. W. DARLING, Vice-Pres.

# The Bank of Hampton

HAMPTON, VA.

Solicits the accounts of Banks, Bankers, Firms,  
Corporations, and Individuals.

Capital ..... \$ 100,000.00  
Surplus ..... 150,000.00  
Resources ..... 1,750,000.00

*A Progressive Bank with Progressive Management*

4 Per Cent. PAID ON ALL SAVINGS ACCOUNTS

#### DIRECTORS

John B. Kimberly	W. W. Richardson	Harry H. Holt
F. W. Darling	Nelson S. Groom	Jacob Heffelfinger
A. Howe	J. T. Lee	J. C. Robinson
	W. H. Face, Cashier	

# Medical College of Virginia

MEDICINE

DENTISTRY

PHARMACY

STUART MCGUIRE, M.D., Dean

New college building, completely equipped and modern  
Laboratories. Extensive Dispensary service. Hospital facilities  
furnish 400 clinical beds; individual instruction; experienced  
Faculty; practical curriculum. 79th Session.

For catalogue or information address

**J. R. McCAULEY, Secretary**

1150 East Clay Street

— —

RICHMOND, VA.

# KODAK

Developing and printing at lowest prices consistent with best quality. Write for price list, catalogues and sample print.

## HOCO GLASSES

are the best that skilled workmen can make from the finest quality material. Prompt attention to mail orders.

## G. L. Hall Optical Co.

*"Eyeglass and Kodak Experts"*

146 Granby St. . . . . Norfolk, Va.  
211 E. Broad St. . . . . Richmond, Va.  
813 Main St. . . . . Lynchburg, Va.

THE S.  
GALESKI



OPTICAL  
CO.

Leading and largest optical house  
in the South

GOOD FOR THE EYES

Kodak Headquarters

Developing and Printing

Send for catalogue and price list

Main and 8th Sts., Richmond, Va.

223 E. Broad St., Richmond, Va.

273 Granby St., Norfolk, Va.

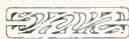
2115 Jefferson St., Roanoke, Va.

*The place where Students are  
welcome*

SODA WATER AND CIGARS

BOOKS AND COLLEGE  
SUPPLIES

VELVET KIND ICE CREAM



# Stone Drug Company

# C. J. Person

JEWELER



Williamsburg, Va.

## GO TO B. LARSON

Williamsburg, Va.,

for all kinds of

SHOE REPAIRING

*Expert work at reasonable prices*

Phone 361 Automobile Delivery

## Akers Laundry

*That Cleaner*



CLEANING      PRESSING  
DYEING



3112 and 3207 Washington Ave.  
Newport News, Va.

## The Bank of Phoebus



E. M. TENNIS.....*President*  
A. HEINECKEL      }  
G. K. VANDESLICE } *Vice-President*  
S. C. REESE.....*Cashier*



RESOURCES—\$400,000.00

W. H. McConnell Juno. W. Russell

### McConnell & Russell

*Civil Engineers and Surveyors.*

Williamsburg, Va.  
Richmond, Va.

SURVEYS  
DESIGNS  
EXAMINATIONS  
REPORTS

### Soda - Licious Soda

Centrally located

Largest and most up-to-date  
Pharmacy in Hampton

*The place where College men go*

Bellaney Pharmacy, Inc.  
Hampton, Va.

### Get Yourself Slicked Up

When in Newport News  
Don't Fail to See

**W. A. HILL**

*The Barber*

### W. H. Williamson & Co.

*Dealers in*

HONEST FOOTWEAR

*College Men's Shoes a Specialty*

2902 Washington Avenue  
NEWPORT NEWS, VA.

Mail orders will receive prompt  
and careful attention.

WE PAY POSTAGE

# G. S. Barnes & Co.

HATS, CLOTHING AND FURNISHINGS

*Walkerer and Hanan Shoes*

Washington Avenue

NEWPORT NEWS, VA.

## Old Dominion Department Store

WILLIAMSBURG, VA.

Most varied and largest stock of  
young men's shoes and furnish-  
ings in town. Styles al-  
ways up to the minute.

Highest class goods,  
lowest prices.

Also, everything to wear, to eat  
and for the household.

## Williamsburg Bake Shop

*Everything Good to Eat*

Special Attention Paid to College  
Students

MISS E. PILKINGTON,  
Proprietor

## Save Systematically

Open a savings account with this  
Bank by depositing \$1.00  
or more by mail.

## Savings Bank of Norfolk

215 Granby St. NORFOLK, VA.

*Directors*

Geo. W. Dey Walter H. Day  
R. P. Waller J. Jett McCormick  
T. L. Belote Henry Kern, Jr.  
E. M. Baum Thos. H. Wilcox  
R. D. Cook Nathaniel Beaman  
W. H. Sterling, Jr.

## Williamsburg Restaurant

EUROPEAN STYLE

Up-to-Date Equipment. Good  
Country Cooked Food.

Special Attention to College  
Students.

*Give us a Trial.*

RUBIN BRENNER, Mgr.

H. L. PAGE,  
President

H. B. PAGE,  
Vice-President

LAWRENCE C. PAGE  
Secretary and Treasurer

## H. L. PAGE & CO., Inc.

Established 1880

Auctioneers and Real Estate Agents

PROPERTY SOLD PRIVATELY OR AT AUCTION,  
OPTIONS BOUGHT AND SOLD

R. W. Strucis, Manager

*References:* Any Bank in Norfolk, Va.  
Williamsburg, Va.

## ATLANTIC HOTEL

Main & Cranby St. Norfolk, Va.

Ideally situated in the most desirable section of Norfolk.  
Every comfort for the tourist. Every convenience for the  
traveling man.

*Free shower baths on all floors.*

Rates \$1.00 per day and upwards.

FRANK BRAGG, Manager

### B. C. CREASY

SANITARY DRY CLEANING  
WORKS

Main Street  
WILLIAMSBURG, VA.

### *Hotel Mc Ginnis*

Williamsburg

*Service of the Best*

JNO. MCGINNIS - Proprietor

Patronize  
Our Advertisers



# HAMMERSMITH ENGRAVING CO.



ENGRAVERS  
PRINTERS

*College Annuals Complete*

MILWAUKEE, WIS.



















