

THE WEATHER THIS WEEKEND  
The weather will be an expected low of 40 to 45 degrees on Saturday, with a high temperature as the middle 50s and a 25% chance of rain. Outlook Sunday, 45 to 55 and mild.

# THE FLAT HAT

Elect a Bitch  
Homecoming Queen  
(See Page 4)

VOLUME 5 NUMBER 4 COLLEGE OF WILLIAM AND MARY, WILLIAMSBURG, VA. 23185 FRIDAY, OCTOBER 3, 1969 TEN CENTS OFF CAMPUS

## Students Greet Statement With Cool Dorm Reception

By Bob Curran  
Student reaction to the newly prepared and revised Statement of Rights and Responsibilities appears to range from lukewarm indifference to heated outrage. Many points of dispute are the questions of room search, disciplinary procedure, and prescribed channels of communication between the student body and administration.

Sunday night, residents of the dormitories met with a panel of Executive Council members Blanche Boyd and Howard P. Chapel, assistant professor of history, to discuss their opinions and questions about the Statement.

One student began the discussion with a criticism of the "populist" nature of the Statement's terminology which he felt, made it difficult to discern the College's stand on many of the issues.

He pointed to section 4 which defines a policy of "mutual awareness" and respect for institutional rights and duties and individual liberties and responsibilities" and section 13 which guarantees a student's "privacy in his residence."

Yet, he continued, section 20 "qualifies the concept of individual liberties" stating that College officials may only "conduct a search in a student's room" if "there is probable cause to believe that a violation of either College regulations or local, state or federal laws has occurred." Student questions "Who will determine probable cause?" suggesting "It should be determined by a third party composed of students, faculty, and the administration." Another student agreed that he did not want to give the administration that much power if they were independently allowed to make this determination.

Section 24 states that "Scheduling of College facilities shall not be used as a device of censorship." Student president generally agreed that a class of guaranteeing this practice was required within the pertinent section.

At the Delta Delta Delta house, Tuesday night, Don Lambert and Brian Peas announced a change of opinion regarding the "vague" and "ambiguous" phrasing within the Statement.

According to section 20 it is stated that the College will not refuse to register student organizations as long as these organizations are not "obviously inconsistent" with the goals of the College. The objection raised was that the "goals of the College" are not formally defined in the body of the Statement. For this information, Lambert pointed to the Student Handbook, list distributed to the student body in 1965.

It was generally agreed at the Delta that student disciplinary records, mentioned in section 15, should be destroyed within a level period of time following graduation, rather than within the "reasonable time" prescribed by the Statement.

One student observed inconsistencies in section 27 in the use of the term "due process" in the case of a student charged with a disciplinary violation to "a fair opportunity to state their case" while it requires "due process of law" in their defense to a member of the College community of their choosing. The objection was that the student should be allowed any accused be held secure.

A former student learned that new revision a "policy" feature of the Statement was "intentionally designed to indicate things are going to continue until they have been" He felt that faculty involvement in the policies of the Statement was seriously curtailed.

Members of the BSA will continue to meet with students in the residence halls during the next week, attempting to accurately sound the current of opinions in the College community.

Revisions may then be prepared before the return of the Statement to the Board of Visitors in January.

## Paschall To Name Students To 11 Faculty Committees

By Mary Frances Lowe  
VITAT HAT Reporter

Following the recommendations of the Student Association, President Davis Y. Paschall will name 11 students to serve on each of eleven faculty committees. After conferring with Vice-President W. Melville Jones, Paschall will make his decisions public as early as possible.

"I'm going to try very hard to appoint the three students suggested by the SA for each committee," Paschall explained. "In all instances I will try to appoint a man and a woman to each of these committees." Nominations for the committees do not include male and female representatives in every case, but SA officials appear optimistic that most of the appointments will come from the student body.

At a recent meeting faculty members designated the committees which will have student representation. The committees are:

- Faculty Award Committee
- Faculty Award Committee
- Faculty Award Committee
- Faculty Award Committee
- Faculty Award Committee
- Faculty Award Committee
- Faculty Award Committee
- Faculty Award Committee
- Faculty Award Committee
- Faculty Award Committee
- Faculty Award Committee

The omission of any mention of possible student positions on the academic status committee is a clear source of disappointment to SA officials and other campus leaders. Under the present faculty resolution, students will not have representatives on the committee which rules on readmission to the college for students who have academic deficiencies.

Nominations for the 22 positions open to students are by committee:

- Arts and Letters
- Avrey Anne Smith
- Linda Richmond
- Bob Stammers
- Athletics for Men
- William Collins

## Rock Concert Powers Homecoming Spectacular

The sounds of rock will later in Homecoming 1969 Friday, Oct. 17, at 8 p.m. Martha Reeves and the Vandellas from Motown and the Robinsons, a hard rock group, will perform in concert at Blue Gymnasium. For those who can still stagger out of bed next morning, the annual Homecoming Parade will set out from College Corner on Duke of Gloucester Street at 9:30 a.m. Saturday, with floats representing fraternities, societies and any other group with a penchant for all night do-or-die parties.

## City, Campus Police Nab 2 In Brown Break-in

Police officers nabbed two suspects in a break-in at the campus police station on Prince George Street late at night. It was lightening to hear them pulling on the screen. She explained that she was reminded of the man who had been reported in Barrett dormitory last spring.

The Williamsburg Police Department told the Flat Hat they had received a call from Brown at 1:27 a.m., and that Officers Altman, Adams and Miller had answered the complaint for breaking and entering. They arrived at Brown within two minutes and saw the man entering the building through a first floor laundry window.

A resident for the department stated that they entered the building because they had witnessed the man climbing into the window. Accompanied by "nurses," they had first given the dormitory a cursory search, and then a thorough one. He reported that Lyons and Ripley were arrested in a room on the third floor.

The campus police were present because of witnessing the initial evidence during their regular rounds. According to Officer Maury, three men were seen in the dormitory, and law

campus police had been stationed around the building waiting for them to exit.

City police officers at the scene would say nothing more.

**More Dorm Meetings on the Statement**

Dormitory hearings on the revised Statement of Rights and Responsibilities will continue next week. As they stand, each meeting will be attended by two members of the Board of Student Affairs, one student and one faculty member. Hearings are unable to attend their own residence's meeting are encouraged to attend nearby.

Meetings next week are:

- Monday, Oct. 6, 11 p.m.
- Tuesday, Oct. 7, 5:30 p.m.
- Wednesday, Oct. 8, 11 p.m.

\* SA and Big Ex will meet jointly at the Big Ex house.

\*\* In the basement lounge of Bryan Hall.



BSA Member Edward Cropl listens to comments on the Statement. The Man Discussion, Tu. Lath Professor

## Write-in Candidates Fill Void In SA Rep Primary

Applis, administered by a trustee, for number of candidates in several districts was apparent in the Student Association primary held for dorm representatives Tuesday night. The vote was cast by a large number of write-in candidates.

The two largest freshman dorms, DuPont and Yates, failed to submit petitions for the annual number of spaces, but within filed the requisite forms, Lovelock, Tyler, and the fraternity chapter also had made outside additions to fill their primary slots.

Here is a list of winners, with the vote totals:

Landrum	25	John Morley	14
Lin's Alethea	24	Herb Armstrong	11
Bob's Bar	23	Gary Blamond	10
Bob's Bar	22	Dave Whelan	10
Bob's Bar	21	Clyde Stewart	10
Bob's Bar	20	Shelan Crane	10
Bob's Bar	19	Tom Camp	10
Bob's Bar	18	Pat Graves	10
Bob's Bar	17	Alan Kahan	10
Bob's Bar	16	Bob Kamey	10
Bob's Bar	15	Glenn Bowman	10
Bob's Bar	14	Charlotte Hummel	10

## Administration Forms Drug Study Group

By Carl Nelson  
VITAT HAT Reporter

An advisory committee has been formed by Vice President W. Melville Jones to propose a study of marijuana and other drugs on campus. The committee will be composed of students, faculty, and staff.

The committee, chaired by Jones, was formed in response to the recommendations of the ad hoc Drug Policy Committee, which asked the College to adopt a policy of tolerance to deal with marijuana use and with other drugs. The committee will be composed of students, faculty, and staff.

The committee, chaired by Jones, was formed in response to the recommendations of the ad hoc Drug Policy Committee, which asked the College to adopt a policy of tolerance to deal with marijuana use and with other drugs. The committee will be composed of students, faculty, and staff.

tion because of the implicit decision involved in formulating some sort of rule.

The members of the committee are Vice President Jones, Chairman Don Williams, Assistant Vice President John Donahue, and Dean of Men, Carson Barnes.

At the present time, the committee members contend that there exists no policy of tolerance.

The Flat Hat was told by an anonymous source that the committee is a "study group" with the purpose of studying the drug problem on campus. The committee will be composed of students, faculty, and staff.

The committee, chaired by Jones, was formed in response to the recommendations of the ad hoc Drug Policy Committee, which asked the College to adopt a policy of tolerance to deal with marijuana use and with other drugs. The committee will be composed of students, faculty, and staff.

## SA Slates 'Statement' Discussions

Student Association President Nancy Terrill has announced plans for a College-wide convention the weekend of Oct. 31, to discuss the revised Statement of Student Rights and Responsibilities and "officially" formulate a student statement.

Although the convention date is approximately a month away, a tentative schedule of events has already been set up. Friday night and Saturday and Sunday afternoons, participating students will form groups to discuss the various sections of the Statement. A general meeting to vote on possible changes in the Statement will follow the Sunday session.

The SA then plans to prepare and submit to the student body a referendum based on the ideas obtained from the convention. According to Terrill, a referendum should "help the SA to know what the students would like to see."

While she stresses a "general dissatisfaction" with the Statement as it now stands, she adds that the SA is powerless to act until it has determined the wishes of the student body.

Once the results of the referendum have been tabulated, work will begin on drafting a new Statement. Slated for completion in January, it will then be presented to the Administration and the Board of Visitors. The SA hopes that the new Statement will be received favorably, and to that end it is working to support the faculty as well as the students.

## Administration Forms Drug Study Group

By Carl Nelson  
VITAT HAT Reporter

An advisory committee has been formed by Vice President W. Melville Jones to propose a study of marijuana and other drugs on campus. The committee will be composed of students, faculty, and staff.

The committee, chaired by Jones, was formed in response to the recommendations of the ad hoc Drug Policy Committee, which asked the College to adopt a policy of tolerance to deal with marijuana use and with other drugs. The committee will be composed of students, faculty, and staff.

The committee, chaired by Jones, was formed in response to the recommendations of the ad hoc Drug Policy Committee, which asked the College to adopt a policy of tolerance to deal with marijuana use and with other drugs. The committee will be composed of students, faculty, and staff.

Professors Continued

Several professors have been contacted and have expressed a willingness to take part in the convention, joining with students in the discussion groups. The faculty seems to be very sympathetic to what the students want," Nancy stated. "It is interesting to listen to the students' opinions."

With definite and declared faculty support, Nancy feels that the SA has a good chance of appealing to the Board of Visitors and obtaining final approval of the Statement.



# SURVEY: the drug culture at william and mary

By Larry Elmore

Stepping off the cover of Seventeen magazine, the typical college freshman comes to William and Mary with expectations of immediately being rushed and thoughts of Homecoming. This is only one of two stereotypical groups entering this particular school. Representing the opposite pole is the longer-haired species who holds his own expectations of arriving and becoming involved in campus demonstrations. Two viewpoints are represented here, the older, more traditional conservative and the new liberal perspective.

The backgrounds of these two social categories vary greatly. For years William and Mary has been filling its admission lists with Virginia's finest students representing rural or semi-rural environments, for Virginia has few great metropolitan areas. Out-of-state students and students from the more urban areas come to this school after having been exposed to both a more liberal education and liberal atmosphere.

By Mark Reynolds

Exercising the desire to use drugs in a...  
 This person in a social sense is "turned in" by the social situation outside his circle and then "checked" for his weakness by the group. With the passage of time, however, he usually becomes the one to turn the others in his group on.

The effect of the drug culture on the general culture is essential in many areas...

From acid-rock music to natty attire...

Simply look around the campus at beads, peace signs and the wearing of facial hair...  
 Even in that fortress of conservatism, the Greek system. Of course, this may represent a very restrictive policy on the part of the administration in formulating a hard line policy is evidence of increasing campus drug usage.

All of these factors raise several questions about the effect of the spread of the drug culture to William and Mary. Will the spread of drugs result in a liberalizing of personal beliefs or simply a new experience? Is it simply a coincidence that many in the drug culture have liberal viewpoints? Will equal consciousness and involvement in issues spread with the drug culture? Is student unrest going hand-in-hand with the drug experience?

At William and Mary changes are in the offing. To connect the pending minor revolution, the polarization of student opinion and drugs is impossible, but the correlation is evident.

glenn shean

## counseling center chief views policy

By Mark Reynolds

Editor's note: Dr. Glenn Shean, head of the Psychological Counseling Center, was asked by the Flat Hat to comment on drug usage and policy at the College. The answer represents a psychologist's view of effective drug policy for the College.

In your opinion what are the causes of drug use at William and Mary? Might a very restrictive policy on the part of the administration of the College create an atmosphere favorable to drug use?

First, let me say that it is a mistake to categorize everyone using drugs as an "inadequate personality" or someone with serious personal problems. Drug use among college students has become so widespread (approximately 30-35% of students at many urban universities have smoked marijuana, at least once) that it would be absurd to label them all neurotic.

Experimenting with drugs has become part of a complex movement on the part of many young people, away from having experimented with hallucinogenic drugs at least once. Perhaps the reasons why people use drugs are not unrelated to the reasons individuals drink alcohol—as a way of relieving tensions as a social facilitator, as a means for altering non-traditional middle class values and toward a "youthful" or "rebellious" alternative which includes greater personal freedom to advocate, experience, and express oneself in an individual fashion.

Drug usage is not as widespread at William and Mary as it is at most universities; nevertheless, I would guess that approximately 15-20% of our students' experiences, as an expression of, or attempted solution to, personal problems, or simply because of the pressures of social conformity.

With regard to the question of a College policy on drugs, I agree with your editorial in the Sept. 26 issue of the Flat Hat. The policy, as stated on page 7 of the 1969 booklet Guidelines for Freshmen Counselors, is a most intelligent and well-reasoned one. I would strongly urge that it be maintained as stated as the College policy on drugs.

If we have learned anything about human behavior as a result of the study of the effects of excessively punitive criminal law and of the prohibition of the 1920's, it is that restrictive legislation or severe punishment does not reduce the frequency of occurrence of the behavior in question, but rather serves to make the forbidden behavior more attractive and exciting.

I am sure that the effects of the implementation of a harsh and restrictive drug policy here at William and Mary would be no different.

The most effective means of reducing the misuse of drugs would be for the College to sponsor a series of educational programs each year.

A policy which emphasizes and provides an educational program structured to provide factual information and relevant questions about drug usage seems to me to be the only one consistent with the nature of a university.

## drug study group

(Continued from Page 1)  
 deal with drug use and abuse by students. The Flat Hat was unable to reach Lambert, but according to Jones, Lambert had commented that while no policy existed, the College did not support the double-jeopardy explanation offered by the Guidelines for Freshmen Counselors.

Carol Crute, Head Sponsor in 1969 and one of the authors of the handbook explained to the Flat Hat on Tuesday that she had had a personal conference with Lambert on this problem, and that he had approved the substance of the paragraph on drug usage. According to Jones, Lambert contents he did not approve this explanation of the lack of a College policy toward drug usage, and that he was unaware of its insertion into the Handbook.

While Barnes stated that "it would be premature" to comment on the activities of the committee, Donaldson, Jones and Willis were interviewed jointly by the Flat Hat on Wednesday.

All three agreed that any formulation of a specific policy on drug usage at the

College would not involve a student under prosecution in a situation of double jeopardy or "double punishment." This is contended by Shaver.

Donaldson expressed the opinion of the group when he stated that "enforcement of penal statutes is separate from the rules of the College." He explained that while "civil law exists to enable society to function properly," "College rules" exist to "preserve an institution within itself."

While he emphasized that he was not concerned that not only on the letter but also the spirit, of proposal precluded a situation of double jeopardy.

Jones and Willis expressed a desire for involving a large segment of the College community in hearings on any proposal that the committee might make, and that provision be made for hearing student opinions after they have finished their study. They all agreed, however, that any recommendation or policy would require approval by the Board of Visitors.

## feds intercept complaints

By Molly Shryer  
 Flat Hat Managing Editor

As anyone bright enough to be at Harvard knows perfectly well, possession or distribution of marijuana and LSD is strictly against the law and taking drugs involves user in psychological dangers and contacts with the criminal underworld.

If a student is stupid enough to misuse his time here indulging in such illegal and dangerous drugs, or worse, is that he should leave college and make room for people prepared to take good advantage of the college opportunity.

1967 memorandum to Harvard College, Freshmen

In 1967 a student was "stupid" if he so much as experimented with drugs. But two years later, here and now, how cautious that label seems. From juvenile delinquents to middle-aged "Establishment" financiers, from the bored and disinterested to the highly motivated and creatively, an ever-expanding spectrum of individuals are turning out—and explain the judgement as stupidity is inadequate.

Legal penalties for possession or sale of drugs, however, remain excessively harsh, according to Dr. Stanley F. Yolles, director of the National Institute of Mental Health. He stated, "Known of no clearer instance in which the punishment for an infraction of the law is more harmful than the crime."

Yet drug users and experimenters have not hesitated to fly in the face of the law. The relative lack of enforcement in the United States has led the Nixon administration to try a different approach to controlling illicit drug traffic: rather than surrounding for arrests within the country, the plan is to halt, or at least retard, importation of drugs at the 2,500-mile Mexican-U.S. border. And so we herald Operation Intercept.

At no less than 31 land points and 27

**PERSONALIZED EATON'S STATIONERY**  
 Reasonably Priced  
 ALSO  
**ENGRAVED CALLING CARDS**  
 Williamsburg's Most Complete Line

**THE VIRGINIA GAZETTE**  
 Containing the Fresh Advice, Events and Demands  
 FOUNDED 1838  
 WILLIAMSBURG, VIRGINIA  
 434 PRINCE GEORGE ST. CA 9-2192

## airports in the border area inspections are being conducted.

Traffic has been backed for as much as three miles as both automobiles and the passengers themselves are searched for drugs. Claiming that the crackdown is turning border cities into "ghost towns," representatives of Mexican labor organizations have announced plans to march in protest.

Thus far, few seizures have actually been made, indicating, according to federal spokesmen, that drug smuggling has been successfully deterred. Theoretically, the cost of available drugs will rise because the means of the average youthful buyer.

And indeed, seizures in some larger cities, any price have gone to steadily. Others claim, however, that the "flat hat" with large and well-financed organizations backing it, continues unabated. But has the scheme been applied to the Canadian border, to home-grown supplies or to importations from Vietnam?

Just how detrimental or habit-forming marijuana is has never been satisfactorily resolved among experts, but most medical researchers remain of the opinion that marijuana is not a large grouping of individuals but of smaller, more cohesive cliques based primarily on common interest and the intensity with which one is involved.

The aim here is to deal with the spread of drug usage from these small groups in the general William and Mary population. To know exactly how many students use drugs or which form is the haven for usage is almost impossible, but the proportion of those who do use drugs on this campus would surprise anyone.

The spread among William and Mary students can be explained by differential availability of people. The usage is learned not through the mass media but through close social interaction and, in personal relationships.

Praise of the effect of certain drugs has caused many non-users to desire the experience. With the availability of both positive information and the drugs themselves, the student has an easier route.



glenn shean

## After Dark Diversions

**Williamsburg Junior Women's Club Benefit Showing**  
 "Sweet Charity"  
 7:45 P. M. WEDNESDAY, OCTOBER 8, 1969  
 New Blue Theatre Monticello Shopping Center  
 REFRESHMENTS AT 7 O'CLOCK  
 ADMISSION \$2.25 PER PERSON  
 For reserved tickets and seats, call 229-7763 or write P. O. Box 25  
 Tickets will be sold that day at the box office.

**Patronize Our Advertisers**

**Williamsburg Theatre**  
 OCT. 7 THRU 13TH

**PETER OTOOLE** stars with **KATHERINE HEPBURN** in **"THE LION IN WINTER"**  
 Shows at 7:30 - 9:30 and 9:00 P. M.  
 PRICE \$1.25

**"PRINT YOUR WAGON"**

Lerner and Loewe's Hit Musical of Gold-Rush America!

Curtain Time 8:30 P. M.

PRESENTED BY THE **WILLIAMSBURG PLAYERS**  
 610 York St. Call 229-1679 for Reservations

Thursday, Friday, Saturday, Sept. 25 thru Oct. 10  
 All Seats Reserved \$3.00

**FOR THE OPEN ROAD AFTER DARK**  
 RENT-A-CAR

**Ford** BEST-IN-CLASS CREDIT

	Day	W/Gas	W/Gas	Weekend
MAVERICK	8 Cyl.	\$ 6.00	.87	\$11.00 + .87
FALCON	8 Cyl.	6.00	.86	11.00 + .86
MONTEREY	8 Cyl.	9.00	.87	15.00 + .89
MERCURY S. WAGON	8 Cyl.	10.00	.11	11.00 + .87

RATES: Include Gasoline oil maintenance and proper insurance coverage.  
 INSURANCE: Liability and property damage, fire, theft and \$100.00 deductible physical damage. (Full coverage physical damage protection available at \$1.25 per day or \$6.25 per week). Must be 21 years old.

**PERSON FORD, INC.**  
 SECOND STREET PHONE 229-3481

**REVOLT!**  
 FROM BUYING OVERPRICED MERCHANDISE.  
 WE SELL BY VOLUME - ANY PRICE BETTER THAN NONE.  
**50-75% OFF ON ALL MERCHANDISE.**  
 Williamsburg Auction Center  
 Pare & Pennington  
 11 a.m. - 4 p.m. 6 - 9 p.m.

**MDA is coming**

**The Cascades Restaurant**  
 near the Information Center, Williamsburg  
 Luncheon served from noon. For dinner reservations, call 229-1708

**A menu set to music.**  
 Foods fresh from the Chesapeake Bay, and the music of George Carroll—that's the Cascades. There's nightly entertainment in this exciting new restaurant, and a dinner dance every Tuesday, Thursday, Friday and Saturday. For fine food, your favorite mixed beverages, and entertainment, bring your friends for an evening at the Cascades.  
 If music be the food of love, we're playing your song.

**FOR BIG MOUTHS — A BIG SANDWICH**  
 The "Corner Special" is for hungry people. Roast Beef, Turkey, Ham, Cheese, Lettuce and Tomato on a huge roll. A meal in itself for a few pennies more.

**CORNER DELLY**  
 601 PRINCE GEORGE STREET 229-4335  
 WILLIAMSBURG, VA.







Friday, October 3, 1969

**FIRST ANNUAL  
AUTUMN CYCLE  
RALLY**

*Sponsored By*

**THE FLAT HAT, WATTS HONDA  
And W&M RESTAURANT**



**OCTOBER 12, 1:30 P.M.  
COMMON GLORY PARKING LOT**

# THE FLAT HAT

Page 2

Advertising Supplement

Friday, October 3, 1969

## And Away We Go

If motorcycles are your bag and cards are lucky for you then you'll want to enter the First Annual AUTUMN CYCLE RALLY sponsored by the FLAT HAT, WATTS HONDA, and the W&M RESTAURANT. The date is Sunday, October 12, 1:30 p.m.; the meet will begin at the Common Glory parking lot and will finish there, with the official ending point being the basement of the W&M Restaurant.

The rally is a test of your driving skill and luck in drawing cards for this will be a POKER RALLY. The course will have five checkpoints. At each checkpoint the rider or navigator will select one card from the deck provided. If after completing the course, the hand you've drawn doesn't suit you, you'll be able to draw three new cards. The winner of the rally will be the entry with the best hand completing the course in the required time without having violated any of the rules of the meet.

Winners will be announced at the official ending point. Their names will be printed in the Flat Hat of the following week and trophies will be presented on the field at the October 25 home game. Trophies for the first six places and the highest placing Honda will be presented there, as well as a check to the William and Mary Fund for the amount of the entry fees.

### WBCI Will Broadcast

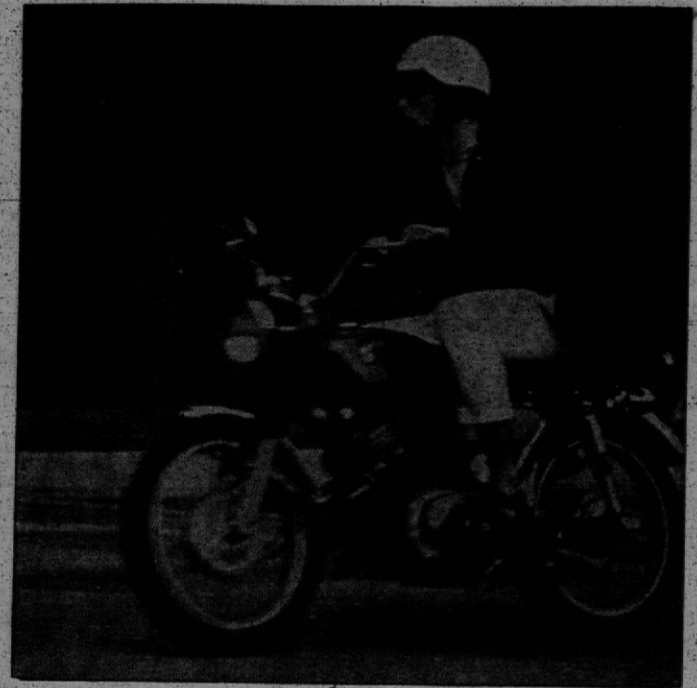
WBCI will broadcast periodic announcements on the progress of the meet and will also announce the winners. WCWM may also broadcast the event.

All entries include the driver and navigator. All bikes under 75cc are not eligible and all participating bikes must be insured. The entry fee will be \$2.00 which includes expenses for trophies and registration fees for driver and navigator.

If there are any questions on this meet please write or call Watts Honda or the Flat Hat. We'll be glad to answer any questions or clear up any confusions. The course will be announced at the meet itself.

### Pre-register Now

1. Entrants pre-register with the form in this newspaper. Entrants must fill the form out completely to be properly registered. Send check or money order to Watts Honda, P. O. Box CB, Williamsburg, Va. 23185, Attn. RMV or to Flat Hat, Box 320, Williamsburg, Va. 23185, Attn. JL or form and cash to our offices. Entry fee is \$2.00.



2. Entrants check-in at registration, which will begin at 1:00 p.m., Sunday, October 12 at the Common Glory Parking lot. Entrants may register at the start of the meet but it is advisable to register by mail or in person at the Flat Hat Office. This will help avoid confusion and waiting at the starting point and also insure a low starting number.

3. Entrants will receive printed instructions on a score card at the starting point, when they check in. Pre-registrants will have a card with starting time and names on card at the starting point. The instructions will give specific directions to participants for the course so that no one will get lost.

4. When your starting time is up, proceed, CAREFULLY, at LEGAL or LOWER SPEEDS, to execute instructions. Check off each instruction as it is completed. Participants will be disqualified if all instructions are not completed.

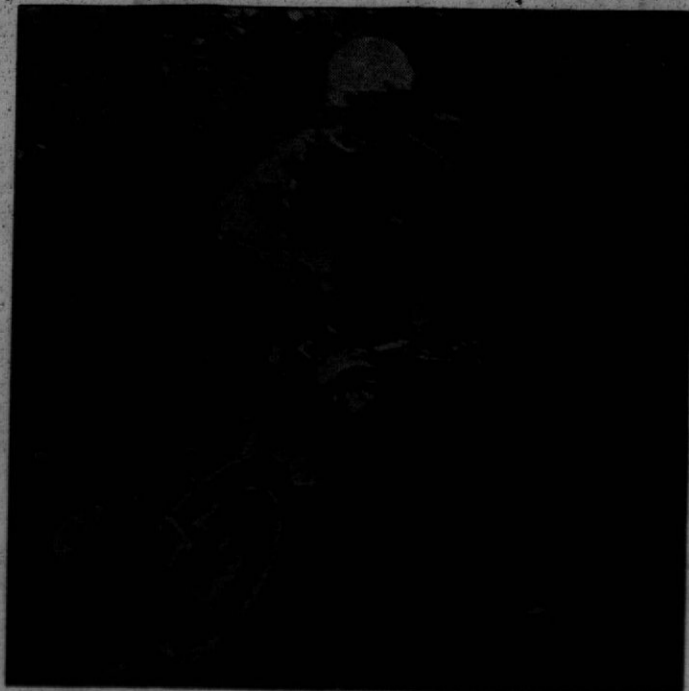
5. Draw one card at each checkpoint. The checkpoint judges will write on your instruction card the number denomination of the card drawn. Return the card to the checkpoint judges. After completing the circuit of five checkpoints, you will have a poker hand. Evaluate your hand and if you would like, you may draw up to three new cards at the finish point, the Common Glory parking lot. Return all playing cards. Make sure your name is on the instruction form and turn it in to the judges at the finish line. The official ending point will be the W&M Restaurant basement. Winners will be announced there after all have returned and the judges have had time to evaluate the best hand. Trophies will be awarded at the October 25 home football game.

6. Violation of any traffic law will disqualify the contestant. Contestants finishing before the minimum time-limit or after the maximum time-limit will be disqualified.

7. Any protest must be made in writing before the judges leave the finish line.

8. Rain date will be October 26, 1:30 p.m. No refunds on entry fees will be permitted.

9. No alcoholic beverages or other intoxicants may be consumed before or during the rally. Consume all you like after the rally at the W&M Restaurant. Good luck from all of us at the Flat Hat and Watts Honda. Look for our spring rally.





# EVERYONE

WILL BE

# SCRAMBLING

TO THE



# W&M RESAURANT

FOR THE FINISH  
OF THE

# "AUTUMN CYCLE RALLY"

A FREE PITCHER OF BEER  
FOR THE WINNER!

# SUNDAY, OCTOBER 12

GOOD LUCK TO ALL ENTRANTS.

# W&M RESTAURANT

"THE STUDENTS PLACE"  
JAMESTOWN ROAD

### OFFICIAL ENTRY BLANK

*No Cycle Less Than 75cc Or Uninsured Allowable.*

DRIVER NAME _____	NAVIGATOR _____	Date _____
ADDRESS _____	_____	Type and _____
_____	_____	Size of Bike _____
_____	_____	Year _____

ENTRY FEE — \$2.00

I hereby release the sponsoring parties for this event from liability of personal damage, damage to vehicle or property; I further state that my vehicle is insured with liability insurance and that I presently have a valid drivers license.

..... DRIVER

..... NAVIGATOR

Mail Entry Blanks to: WATTS HONDA, P. O. Box CB, Williamsburg, Va. 23185, Attn. RMV or Flat Hat, P. O. Box 320 Williamsburg, Va. 23185, Attn. J. L. or bring it to our offices.

# WATTS Is Your HONDA CYCLE CENTER



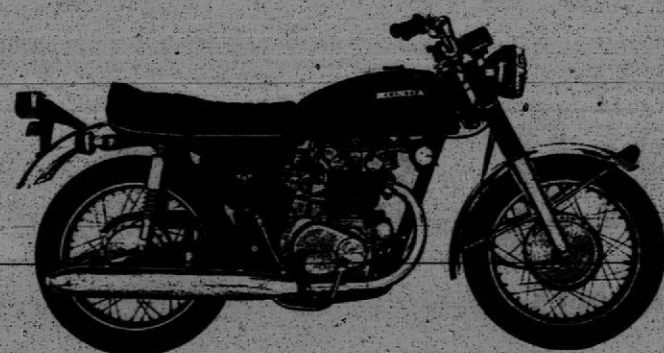
**Scrambler 70**

A best buy at only \$329.00. A great light weight with regular Honda Scrambler styling, chrome fenders, T-bone frame and telescopic front shocks. 185 mpg.



**Scrambler 90**

A cross between the SL90 and the Super 90. Best dual purpose machine in its class. 180 mpg. Chrome fenders, candy colors and two highway speeds are features on this bike.



**450 K2 Super Sport**

All new tank and side covers highlight this new K2 model. Twin over-head cam and 444cc deliver 44 hp. Truly not a bike for beginners. Less than 10 lbs. per hp. means experienced riders only.

## Honda 750 Four

Honda doesn't make racing bikes for sale to customers. Right! The front disc brake is for looks only. Sure! There's a standard mount threaded for a second disc brake on the front forks for balanced styling. Oh yeah! Just because any Honda dealer can install the second disc brake in about 30 minutes is pure coincidence. The accessory farrings and TT saddle are merely styling gimmicks. After all, Honda only rates the big four at 67 HP at 8000 rpm and any 350 or 450 Honda will turn 10,500-11,000 rpm.

And *Cycle World Magazine* must have been lying when it said that the 750-4 put 80.2HP at the rear tire on Riverside Raceways Rear Dyno. Anyway who need a bike that cruises at 120 MPH with two up and a windshield? Who needs quarter mile times in the 12's?

### What To Look For . . .

on your first 750-4 ride. Smoothness and power. Watch out. It's so smooth, with 360 AND 180 degree balance that you're liable to be going much faster than you realize.

### Sore Left Hand

The clutch is softer than a 450 but you tend to hang on more with your left hand because your right hand is working the throttle. And your right hand is what you really have to keep your eye on!

### Turning

Although the 750-4 will turn and seem sharper than any other 750 (or 450) because of a lower center of gravity and special new low profile tire, its smoothness can deceive you into entering a curve too fast. All in all it adds up to the most exciting, technically superior motorcycle on the world market today.

## Special Announcement



**Alan Blevins  
Grad Honda Technician**

**Steve Knoll  
Your Campus Rep**

Watts Motor Company is pleased to announce the appointment of Mr. Blevins as their Honda Service Manager. Alan is a recent graduate of the Honda Training Center in Atlanta. One visit with Alan will convince you of his skill and his desire to serve you.

The appointment of Steve to our Sales force has been a real education for us all. His vast knowledge of motorcycles is sure to give you greater satisfaction with the model of your choice. Steve's campus address is Camm House 237, Ext. 208.

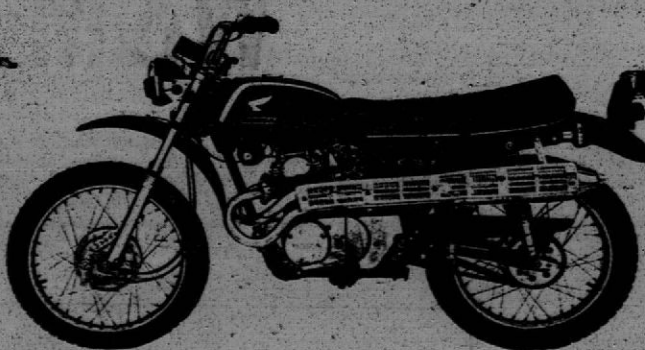
### Service Is The Key

To any business today and Watts now has it. The most obvious indication of this new emphasis is Alan Blevins. Alan became our Honda Service Manager when he left the Naval Weapons Station Electronic Testing Labs where he was an electronics systems analyst. And to make sure you can have needed parts when you want them Steve Knolls and Dane Stromm doubled our stock. Our parts department is stocked with any necessary part to make repairs much easier.

In the Sales department you will find many more new and used cycles. Alan and Steve even hold training sessions on our cycles so that you will find our salesmen knowledgeable and up to date on all of our equipment. All this adds up to more enjoyment and greater satisfaction for you, the customer.

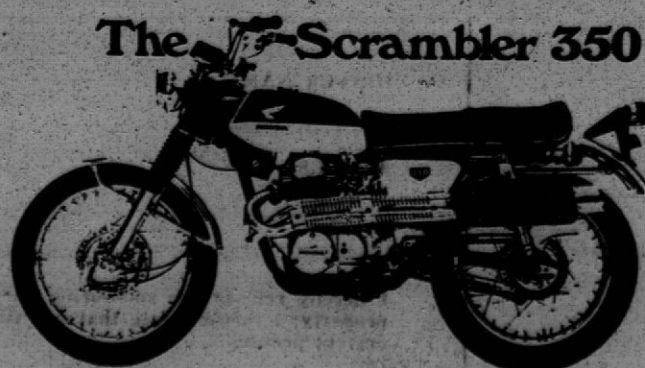
**Scrambler 175 K3**

All new this summer. This bike features high fenders, 20 horse-power, five speed transmission separate instruments and is wild on or off the road. Its been clocked at 16.5 seconds in the quarter mile.



**Scrambler 350**

All time sales record breaker and a best buy at only \$798.00. Standard equipment with this bike are five speed transmission, OHC, chrome fenders, separate instruments; this bike roars through the quarter mile in 13.9 seconds and has a top speed of 112 mph.



The Scrambler 350

**WATTS MOTOR COMPANY**

315 YORK STREET

PHONE 229-3300

WILLIAMSBURG, VIRGINIA