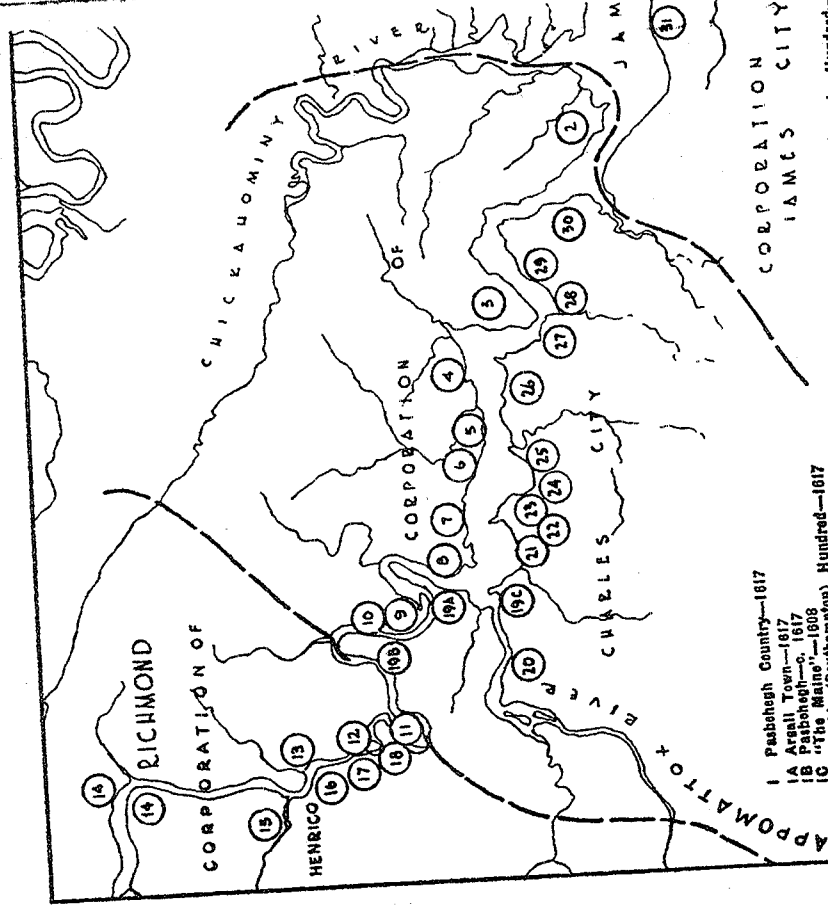
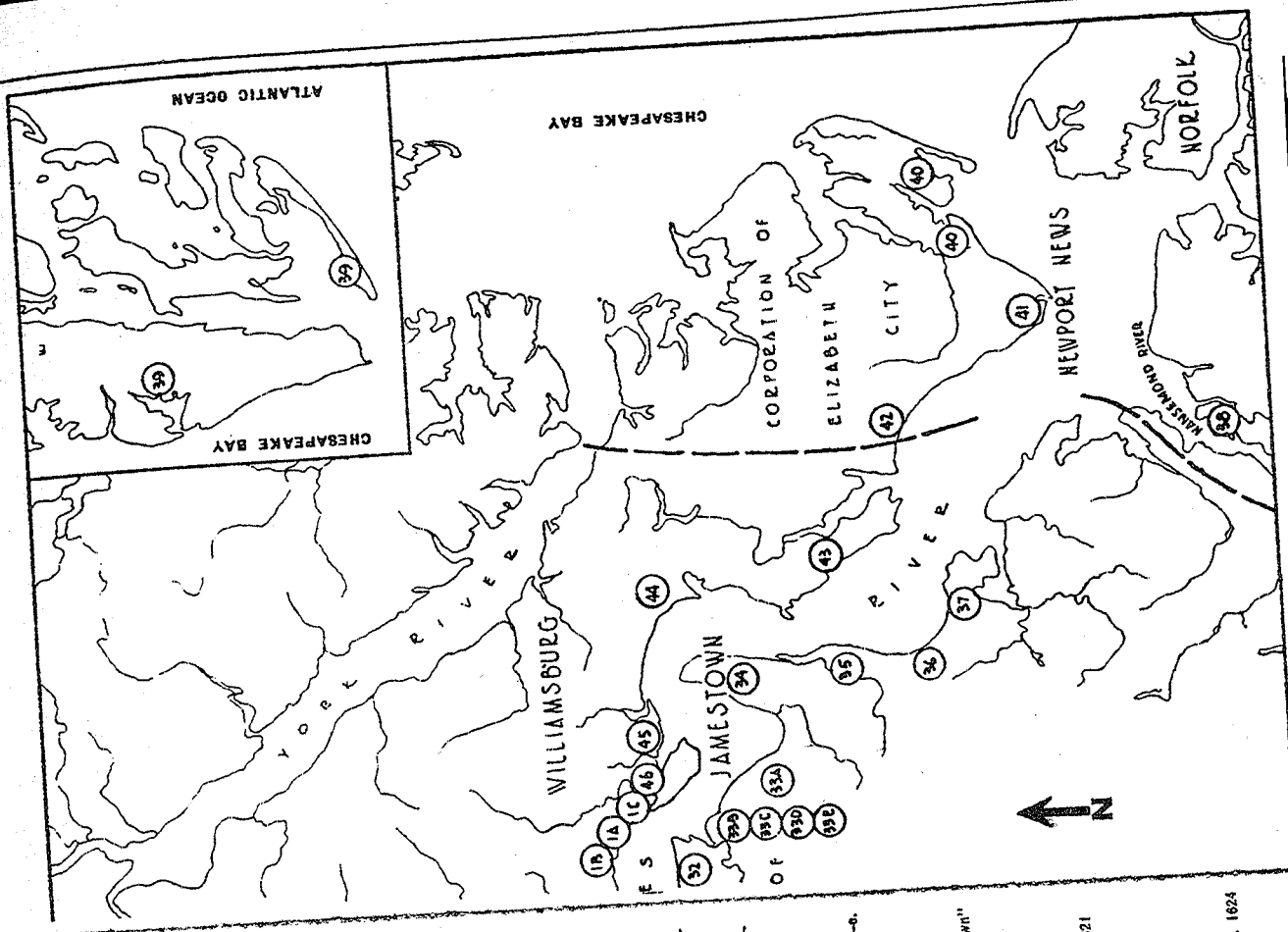


Fig. 1 Location of Virginia Company Sites as discussed in the Muster of 1624-25
(Source: Hatch 1957)



- 1 Pashegh Country—1617
- 1A Arcell Town—1617
- 1B Pashegh—c. 1617
- 1C "The Maine"—1606
- 2 Smith's (Southampton) Hundred—1617
- 3 "Tanks Weyanoke"—1618
- 4 Swinhawe—1619
- 5 Westover—c. 1619
- 6 Berkeley Town and Hundred—1619
- 7 Bausy's Cove (or "Clare")—c. 1620
- 8 Causy's and Shirley Hundred—c. 1615
- 9 West and Shirley Hundred—c. 1615
- 10 Upper His Hundred—c. 1613
- 11 "Dungs His Hundred" (Henrico)—1611
- 12 The City of Henricus (Henrico)—1611
- 13 The College Land—c. 1619
- 14 The College Land—c. 1619
- 15 The Falls—1609
- 16 Falling Creek—c. 1619
- 17 Sheppard's Plantation—Bet. 1622
- 18 Proctor's Plantation—Bet. 1622
- 19 Coxendale—c. 1611
- 19A Bermuda Hundred—1613
- 19B Bermuda Hundred—1613
- 19C Bermuda City—1613
- 20 Pierey's Plantation—c. 1620
- 21 Jordan's Plantation—1619
- 22 Woodland's Plantation—c. 1619
- 23 Charles's Choice—c. 1623
- 24 "Powell-Brooke" or Merchant's Hope—1619
- 25 Maycock's Plantation—c. 1618
- 26 Flowerdew Hundred—Pierey's Hundred—c. 1618
- 27 "Castaine Solimans Divident" Bet. 1622
- 28 Ward's Plantation—c. 1619
- 29 Martin's Brandon—c. 1617
- 30 "Paces-Paines"—1620
- 31 Burrows' Mount—c. 1624
- 32 Plantations "over the river from Jamestown"
- 33A Treasurer's Plantation—c. 1621
- 33B Hugh Crowder's Plantation—c. 1622
- 33C Edward Blunt's Plantation—c. 1622
- 33D Roger Smith's Plantation—c. 1622
- 33E Samuel Richards' Plantation—c. 1622
- 34 Hog Island—1609
- 35 Lawrence's Plantation—1619
- 35A Lawrence's Plantation (Bennett's Plantation)—1621
- 35B "James's Cove"—1622
- 36 Newsumond—1609
- 37 The Eastern Shore—c. 1614
- 38 Elizabeth City (Keoughan)—1610
- 39 Newport News—1621
- 40 Blunt Point—c. 1621
- 41 Mulberry Island—c. 1617
- 42 Martin's Hundred—1618
- 43 Archer's Hope—c. 1619
- 44 "Neck-of-Land near James City"—Bet. 1624

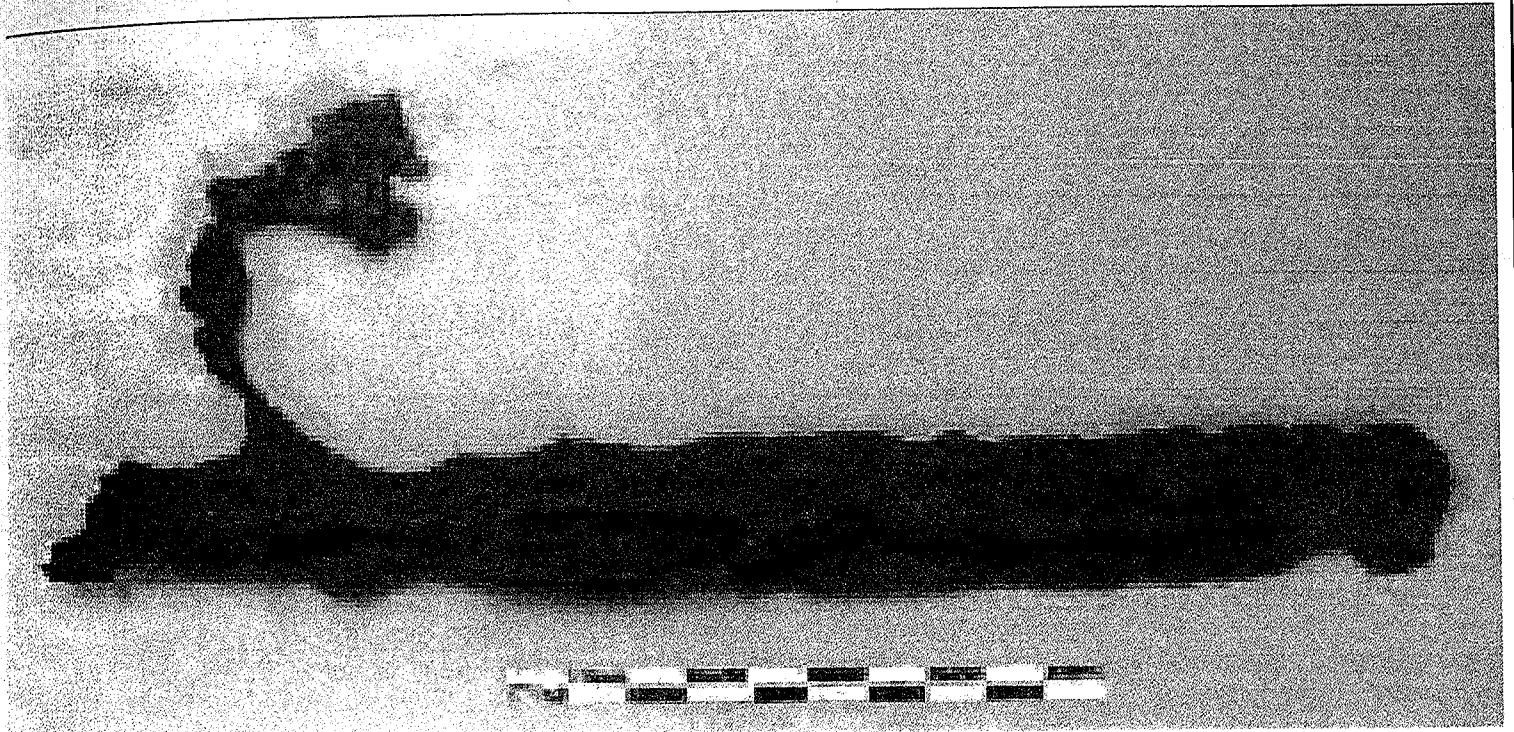
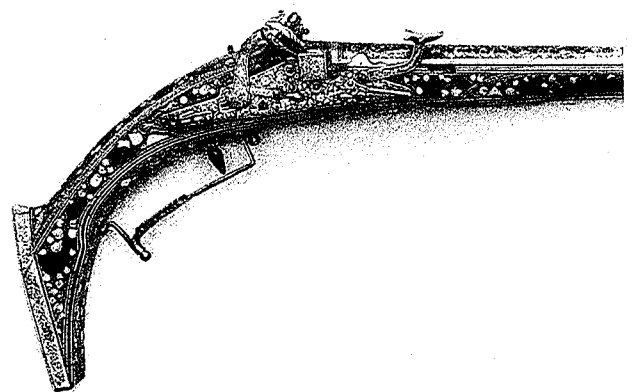


Fig. 2 Matchlock from Jordan's Point, 44PG300/614-42



Fig. 3 Snaphaunce lock from Kingsmill Tennement 44JC39
(Virginia Department of Historic Resources)

Fig. 4 Illustration of the 1584 dated English
Snaphaunce petronell, note similarity
to Fig. 3 (Godwin et al 2003a)



4 The earliest English snaphaunce known, a petronel dated 1584.
(National Museum, Copenhagen, No.10428)

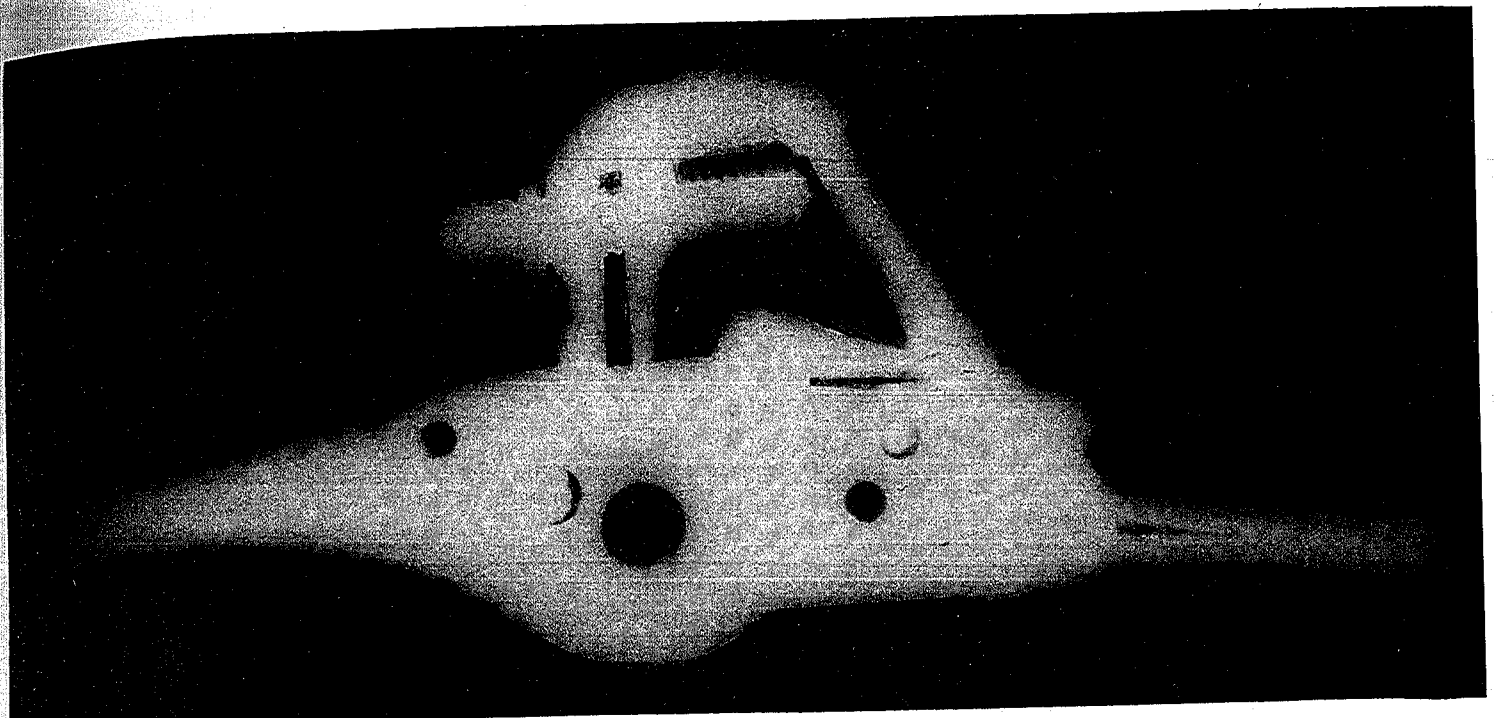


Fig. 5 Wheel-lock from Causey's Care 44CC178, x-ray view. This is likely a French or Dutch lock, similar examples are illustrated in *Decorated Firearms 1540-1870* (Gussler and Lavin 1977: 18, 66)

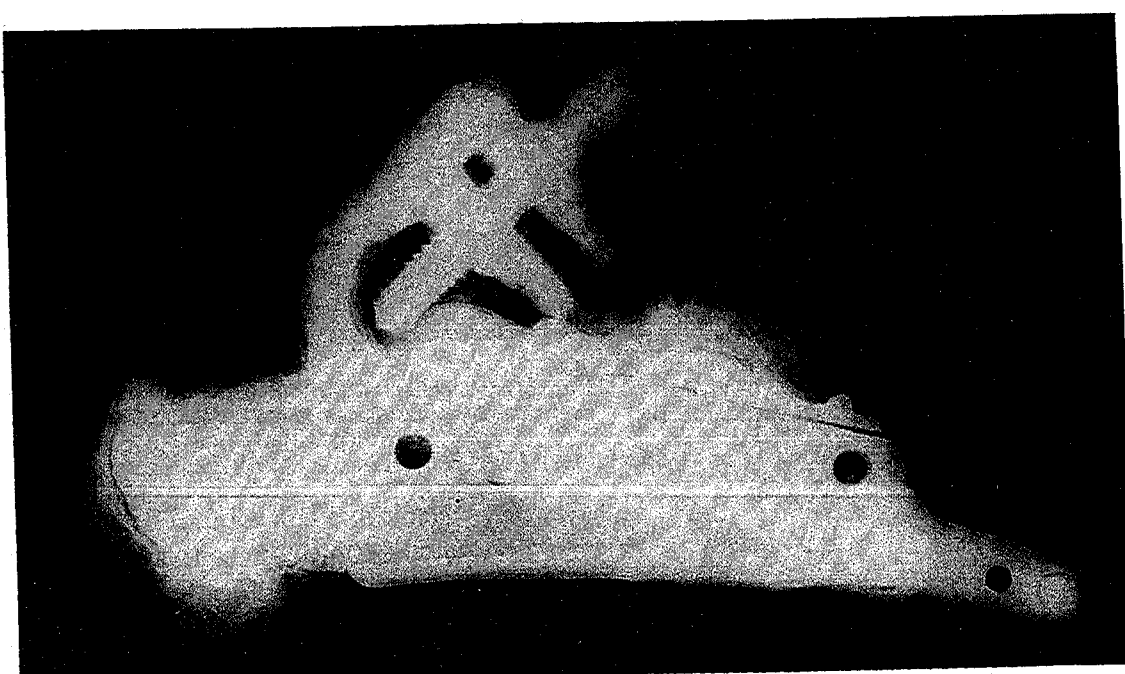
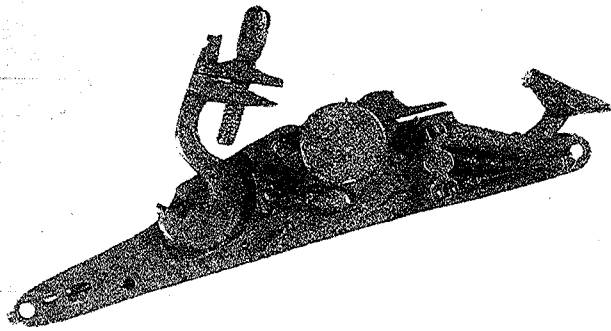
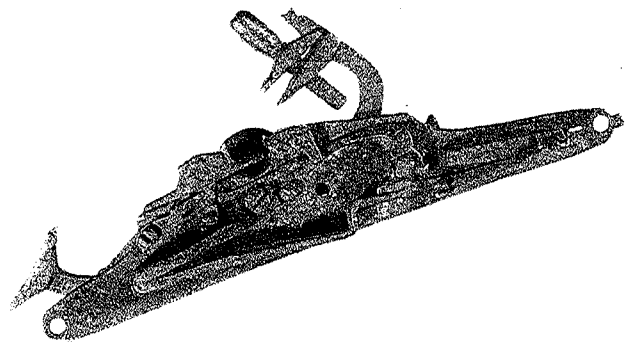


Fig. 6 Snaphaunce lock fragment from Causey's Care 44CC178; x-ray view. The style of this lock is difficult to discern due to the fragmentary nature of its condition, it is interesting to note that it still retains the flint in the cock jaws.

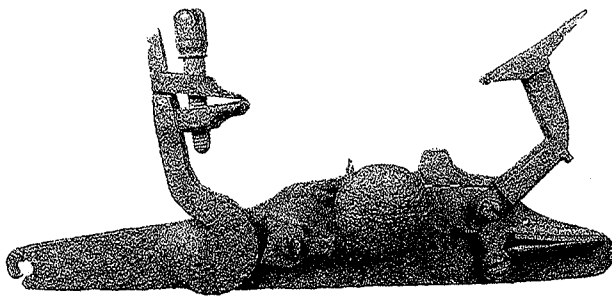


2 A typical English snaphance lock, c1610 (safety catch missing)
(Bristol City Museum)

Fig. 7 & 8 Interior and exterior
Views of ca. 1610* snaphance
Locks (Godwin et al 2003a)



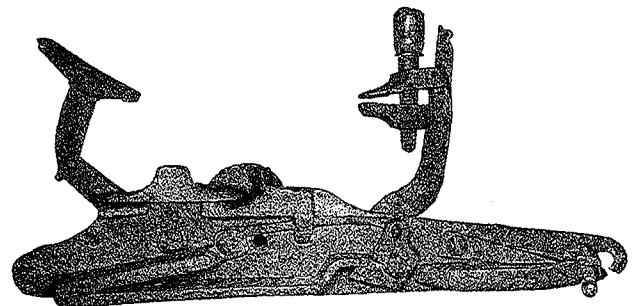
3 Interior of the above lock. Note the wheellock-type 2-piece sear and sliding pan-cover. The push-rod, which is attached to the tumbler and opens the pan-cover as the cock falls, can be clearly seen. (Bristol City Museum)



11 Snaphance lock, c1630-40. The slim design of the lockplate probably reflects a later date of manufacture. (Hardwick Hall, Derbyshire-National Trust)

Fig. 9&10 Interior and exterior
Views of ca. 1630-40*
Snaphance locks.
(Godwin et al 2003a)

*note the subtle changes in the
lock-plate design and sear position.



12 Interior of the lock in Fig.11. The sear springs are mounted in an unusual position, above the sears. (Hardwick Hall, Derbyshire - National Trust).

Fig. 11 and 12 Snaphaunce lock-plates from Causey's Care 44CC178 x-ray views
These two images provide a graphic illustration of the screw and attachment holes
associated with snaphaunce lock construction. Note the sliding pan cover on Fig. 11
and the shadow for the pan attachment on Fig. 12.

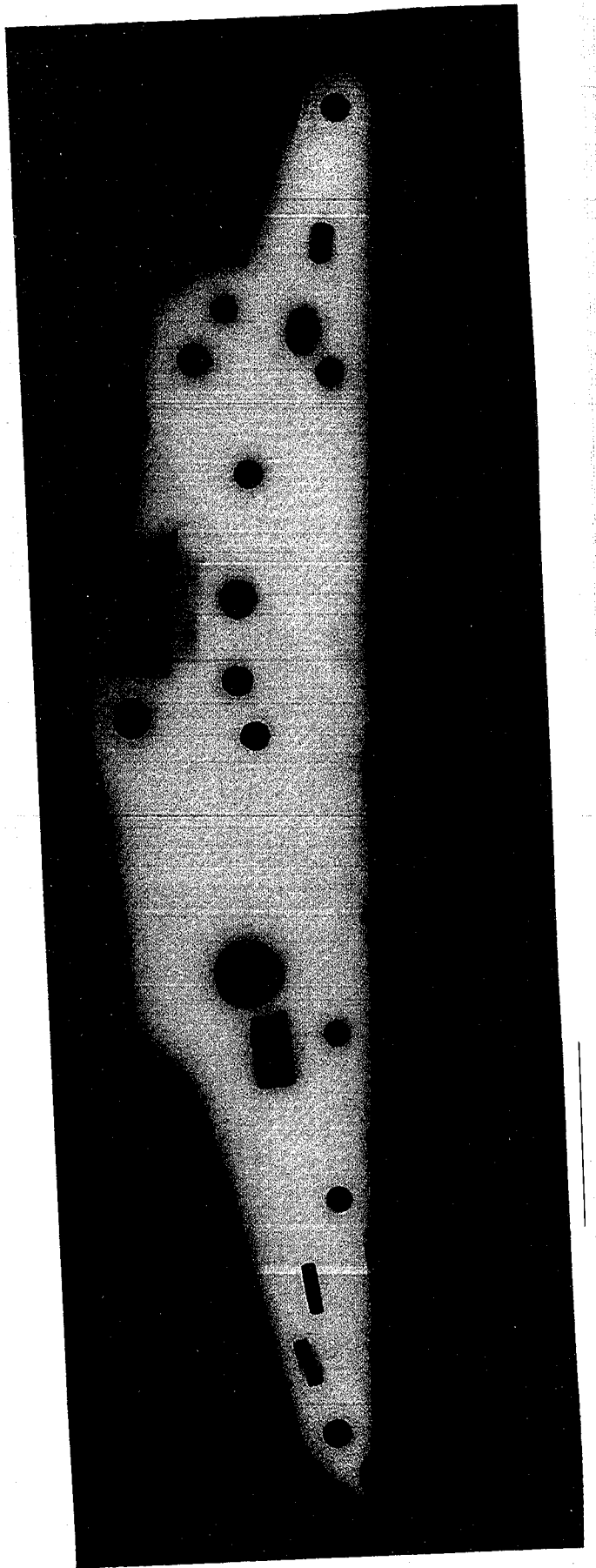
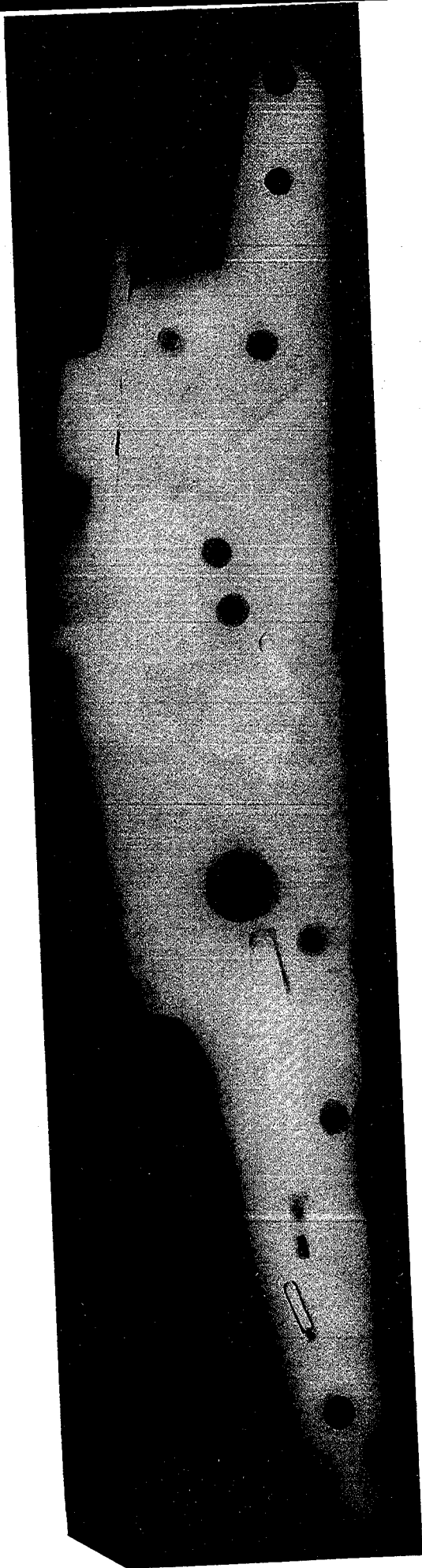
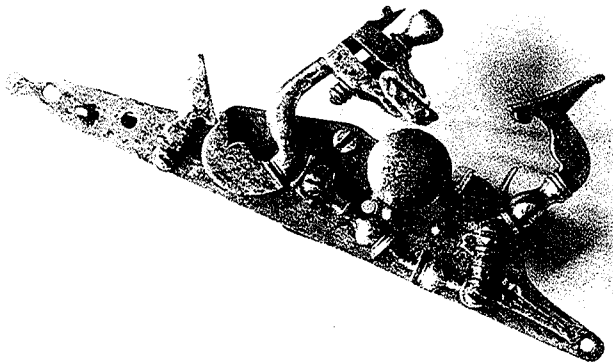


Fig. 13 Snaphaunce lock from
Causey's Care 44CC178
x-ray view



10 English snaphaunce lock, c1620, of common form but
incorporating a dog-catch. (Private collection UK)

Fig. 14 Snaphaunce lock ca 1620. Note similarity of lock-plate style to that of Fig. 13,
particularly the rear finial and the top profile of each lock-plate. (Godwin et al 2003a)

Fig. 15 Page from catalogue of English Arms 20th Park Lane Arms Fair, London (Godwin 2003b)

This figure illustrates the expected form of pistol that would have been used in Virginia during the early seventeenth-century. Of note is entry 1, this relic pistol shows clearly the parts of a pistol in the correct configuration without the wood stock obscuring the relationships. Also, this figure illustrates the Type I English-lock from around the 1635 as a comparison to the snaphaunce locks discussed in the text.

A Loan Exhibition from the Royal Armouries and Private Collections

curated by

BRIAN GODWIN, DAVID OLIVER, MARTIN PEGLER AND
ROBERT C. WOOSNAM-SAVAGE

1

An English snaphaunce pistol, circa 1580.

Royal Armouries XII.4180.

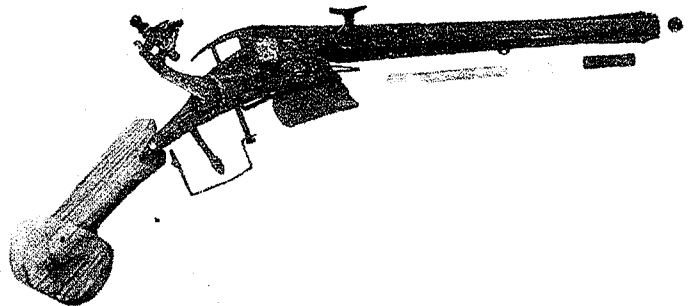
In its original form this was a pistol of some quality and sophistication. It has a pan cover that opens automatically as the cock falls and on the end of the iron lockplate is a pivoting safety catch. There is a long narrow belt hook fitted to the sideplate. The cock and steel were once finely scroll engraved.

Overall length: 18⁵/₁₆ inches. Barrel length: 11¹/₄ inches.

Calibre: .58 inch.

Provenance: Found on the Thames foreshore at Queenhithe. Purchased from Mr J. Matthews, South Australia.

Literature: H.L. Blackmore, *The Queenhithe Pistol, 10th Park Lane Arms Fair Catalogue*, London 1993, pp.17-23.



2

An English snaphaunce pistol, circa 1600.

Royal Armouries XII.1823.

This small pistol exhibits much of its original finery with its fluted barrel and flared fluted muzzle, which still retains traces of gold damascening. The stock is probably of walnut and is heavily inlaid with horn and mother of pearl, it has a button trigger but no trigger guard. Such small pistols were known as 'pocket dags.'

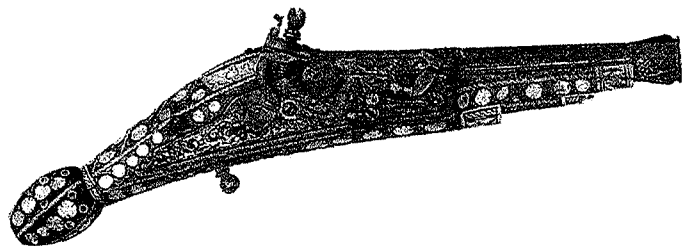
Overall length: 11¹/₄ inches. Barrel length: 6¹/₄ inches.

Calibre: .45 inch.

Provenance: Formerly in the collection of J. T. Hooper and acquired with assistance from the National Art Collections Fund from Christie's London, 1971.

Literature: A. V. B. Norman and G. M. Wilson, *Treasures from the Tower of London*, Norwich 1982, p 75. I. D. D. Eaves, 'Further notes on the pistol in the early 17th century', *Journal of the Arms and Armour Society* 1987, Vol. VIII, No 5, pp. 283-5.

H. L. Blackmore, *English Pistols*, London 1985 pp. 8 & 33.



3

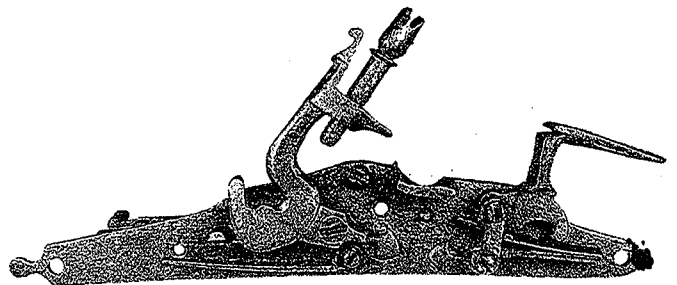
A detached Type 1 English lock, circa 1635.

"The English Lock: its Origins and Development",
Figs. 25 & 26

An early example of the Type 1 English lock. Its overall form, including the trapezoid lockplate, decorative finials and the use internally of a 2-piece horizontally acting sear, are characteristic of the English snaphaunce, from which it evolved. An unusual feature is the spring-controlled dog-catch (dog missing): the long controlling spring can be seen below the cock.

Overall length 8 inches. (Private collection UK)

Literature: B. C. Godwin, "An English Lock Variant", *Arms Collecting*, Vol. 35, No.4, 1997, pp.121-124.



APPENDIX

A

**INVENTORY OF FIREARMS BY INDIVIDUAL IN
THE MUSTER
CORPORATION OF COLLEDGE-LAND
(Henrico)**

	Peece	Peeeces	Fixt	Peece Not Fixt	Match Snaphaunce cocke	Petronell	Pistoll
Richard Davis			4				
Robert Lapworth	1						
John Watson	1						
William Brownigge	1						
Mathew Edlow	1						
William Weldon	1						
Ezekiah Raughton	1						
Margaret his wife	1						
William Price	1						
Robert Campton	1						
Leonard Moore	1						
Thomas Baugh	1						
Thomas Parker	1						
Theoder Moyses	1						
TOTAL	13		4				

CORPORATION OF CHARLES CITTIE

	Peece	Peeeces	fixt	Peece Not Fixt	Match Snaphaunce cocke	Petronell	Pistoll
Neck-of-Land:							
22 January 1624							
Joseph Royall	4						
Josuah Chard			3				1
John Dods			2				
William Vincene			2				
Thomas Harris			3				
John Price			2				
Hugh Hilton			1				
Richard Taylor							
Christopher Browne			2				
Thomas Oage			1				
Robert Greenleafe			1				
Henery Coltman			1				
Hugh Price			1				
Thomas Farmer			1				1
Thomas Sheppey			2				
Alexander Bradway			1				
William Sharp			2				

**West and Sherley Hundred: 22 January
1624**

	Peece	Peeces fixt	Peece Not fixt	Match Snaphaunce cocke	Petronell	Pistoll
Richard Biggs		6				
William Bayleys				1		
Robert Partins				1		
Christopher Woodwards		5				
Amias Bolte		1				
John Collins		2				
Henery Benson		2*(serviceable)				
Thomas Pawletts		3				
William Askew		2				1
Mary Madison		3				
Robert Bagwell		4				
Robert Milner		6				
John Throgmorton		6				
Roger Ratlife		1				
Nathaniell Tatam		1				
Katherine Benett		2*(servicable)				

**Jordans Journey and Chapain Choice:
21 January 1624**

	Peece	Peeces fixt	Peece Not Fixt	Match Snaphaunce cocke	Petronell	Pistoll
Wm Ferrar & Mrs Jordan		11				
Thomas Palmer				3*(Peeces)		
Robert Fisher		3				
John Claye	3					
Christopher Safford	3					
Henery Williams		2				
William Branlin	2					
John Fludd		2				1
Thomas Chapman	1					
Joseph Bull		1				
John Davis	3					
Thomas Cawsey		1				
Thomas Iron Monger		1				
Richard Milton		1				
Nathaniell Cawsey	3					

Chaplains Choyse and The Trueloves Company:

21 January 1624

	Peece	Peeces fixt	Peece Not Fixt	Match Snaphaunce cocke	Petronell	Pistoll
Isack Chaplaine		7				1
Walter Price	3					
Thomas Keie		1				1
John Browne		1				
John Trehearne		1				
Daid Jones		1				
John Box					3*Murders/fort	

Peirseys Hundred:

	(31 Men;	4 Women;	18 Buildings;	8 peeces Ord.)			
20 January 1624							
Abraham Piersey		?					
Samuell Sharpe		2					
Grivell Pooley		3					
Humfrey Kent		2					
Thomas Doughtie		1					
Edward Auborn		1					
William Baker		1					
John Woodson		1					
Edward Threndorden		1					
Nicholas Baly		1					
John Lipps	1						
TOTAL	23	111			2	1	5

**CORPORATION OF JAMES CITY: Pasbehays' & The
Maine**

30 January 1624

	Peece	Peeces fixt	Peece Not Fixt	Match Snaphaunce cocke	Petronell	Pistoll
Adam Dixon		1				
Joseph Ryale		1				
Robert Paramour		1				
William Kemp		1				
Richard Bridgwatter	1					
Henery Turner	1					
Joseph Crew	1					
Thomas Jones	1					
Edward Bourbichth	1					
Revoll Morcock	1					
Edward Fisher	1					
Servants	4					
Governors Men at Pasbehaighs				8	2	
John Swarbeck	1					
Thomas Marloe	1					
Thomas Bunn	6					
Lawrance Smallpage	2					
John Carter	1					
David Ellis	1					
James Tooke	1					
William Binks	1					
Michael Batt	1					
Robert Lince	1					
Hugh Baldwine	1					
Robert Kidd	3					
Doctor Potts Men, Arms at James City*						

**James Cittie:
24 January 1624**

	Peece	Peeces fixt	Peece Not Fixt	Match Snaphaunce cocke	Petronell	Pistoll
Francis Wyatt (Gov)				6		
George Yearley	30					
John Pott*	10					
Abraham Peirse		3				
Robert Poole	2					
James Hicmott	1					1
Thomas Crust	1					
Randall Smalewood	2					
George Grave	1					1
Edward Cadge	2					1
John Jackson		1				
Thomas Alnutt	5					1
Peeter Langman	4					
John Burrowes	4					
John Jefferson	3					
Richard Steephens	8					
George Minifie	3					1
John Barnett		1				

James Iland

	Peece	Peeces fixt	Peece Not Fixt	Match Snaphaunce cocke	Petronell	Pistoll
Richard Tree	6					
Willm Lasey	2					
Thomas Crompe	1					
John Greevett	1					
Thomas Passmore	4					2
Robert Fitt	3					
George Onion	1					
John Hall	1					
John Osborn	1					
William Spencer	3					
Thomas Graye		1				
Gabriell Holland	4					

Neck -of-Land
near James City:
4 FEB 1624

	Peece	Peeces Fixt	Peece Not Fixt	Snaphaunce	Match cocke	Petronell	Pistoll
Richard Kingsmell	6						2
John Smith	2						
Thomas Bagwell	1						
Thomas Benett	1						
John Reddish	1						

Archers Hope JC

	Peece	Peeces Fixt	Peece Not Fixt	Snaphaunce	Match cocke	Petronell	Pistoll
Richard Pierce		2					
Nicholas Greenhill	7						
John Ellison	3						
Thomas Farley	2						1
Joseph Johnson	3						

Burrows Hill
James City

	Peece	Peeces Fixt	Peece Not Fixt	Snaphaunce	Match cocke	Petronell	Pistoll
John Smith				1	2		
George Pelton	1						
Richard Dolpinbe	4						

Paces Paines
James City

	Peece	Peeces Fixt	Peece Not Fixt	Snaphaunce	Match cocke	Petronell	Pistoll
John Proctor	3					2	2
Phettiplace Close	4						
William Bedford	4						
Frances Chapman	1						

Smiths Plant.

James City: 9 Men* 9*

Blaneys Plant.

James City: 15 Men 11(serviceable) 8 10 3

Capt. Mathews Plant.

James City: 23 Men 18(serviceable)

	Peece	Peeeces Fixt	Peece Not Fixt	Snaphaunce	Match cocke	Petronell	Pistoll
Crowders Plant.							
James Citty: 5 Men	12						
Mr. Treasurers Plant							
James Citty: 31 Men	30						
Zachary Cripps et al							3

(A Large Fort)

Hog Iland

	Peece	Peeeces Fixt	Peece Not Fixt	Snaphaunce	Match cocke	Petronell	Pistoll
Raph Hamors Servants	5				6		
Edward Barkley	3						1
John Uty	3						
John Chew	6						

Martins Hundred

William Harwood		10			25		
Ellis Emerson		1			1		
Robert Addams		6					
Stephen Barker		2					
John Jackson		4					
Samuel March		3					

**Mulbury Iland:
25 JAN 1624**

William Pierces Servants							
12 Men	14						
13 Additional Men	12	1					
TOTAL	262	39	8	15	46	2	19

CORPORATION OF ELIZABETH CITTIE: WARISCOYACK

7 Feb 1624 *

	Peece	Peeces Fixt	Peece Not Fixt	Match Snaphaunce cocke	Petronell	Pistoll
Edward Bennetts Servants: 11		13				
Nathaniell Basse (Basses Choyse)	7				1	2
Thomas Phillippes	1					3
Thomas Bennett	4					
Richard Longe	1					
William Newman	2					
Henrie Woodward	3					1
Newportes Newes						
Danniell Gookines 18 Servantes		16				

Elizabeth Citty

	Peece	Peeces Fixt	Peece Not Fixt	Match Snaphaunce cocke	Petronell	Pistoll
William Tucker 17 Men				24		4
John Downeman				1		
John Laydon*				1		
William Cole				3		1
Miles Prickett	4					
Richard Yonge	1					1
Albiano Lupo*	3					
John Powell*	1					
Larence Peale	2					
Robart Brittin	1					
Mihell Willcokes & Jonh Slater	3				1	
Joseph Cobb	1					
Cornelius May	1					
William Morgan	1					
William Julian*	6					1
Thomas Purfray*	4				1	
John Barnabe	1					
John Hazard	1					1
Jerimiah Dickenson	3					
Phillip Lupo	1					